

CORRECTION

Open Access



Correction: Multilocus pathogenic variants contribute to intrafamilial clinical heterogeneity: a retrospective study of sibling pairs with neurodevelopmental disorders

Tugce Bozkurt-Yozgatli^{1,2}, Davut Pehlivan^{3,4,5,6}, Richard A. Gibbs^{7,8}, Ugur Sezerman^{1,9}, Jennifer E. Posey⁷, James R. Lupski^{3,6,7,8*} and Zeynep Coban-Akdemir^{2,7*}

Correction: *BMC Med Genomics* 17, 85 (2024)
<https://doi.org/10.1186/s12920-024-01852-4>

Following the publication of the Original Article [1], the authors reported an error in the placement of the plots during the manuscript preparation step. The authors accidentally placed the plots for Family HOU1842 in the Family of HOU4131, which resulted the duplication of Figure 1 Plots B and H and Supplementary Figure 2B and 5B.

The original article can be found online at <https://doi.org/10.1186/s12920-024-01852-4>.

*Correspondence:

James R. Lupski
jlupski@bcm.edu

Zeynep Coban-Akdemir
Zeynep.H.CobanAkdemir@uth.tmc.edu

¹ Department of Biostatistics and Bioinformatics, Institute of Health Sciences, Acibadem Mehmet Ali Aydinlar University, Istanbul, Turkey

² Human Genetics Center, Department of Epidemiology, Human Genetics, and Environmental Sciences, School of Public Health, University of Texas Health Science Center at Houston, Houston, TX, USA

³ Department of Pediatrics, Baylor College of Medicine, Houston, TX, USA

⁴ Section of Pediatric Neurology and Develop- Mental Neuroscience, Department of Pediatrics, Baylor College of Medicine, Houston, TX, USA

⁵ Jan and Dan Duncan Neurological Research Institute at Texas Children's Hospital, Houston, TX, USA

⁶ Texas Children's Hospital, Houston, TX, USA

⁷ Department of Molecular and Human Genetics, Baylor College of Medicine, Houston, TX 77030, USA

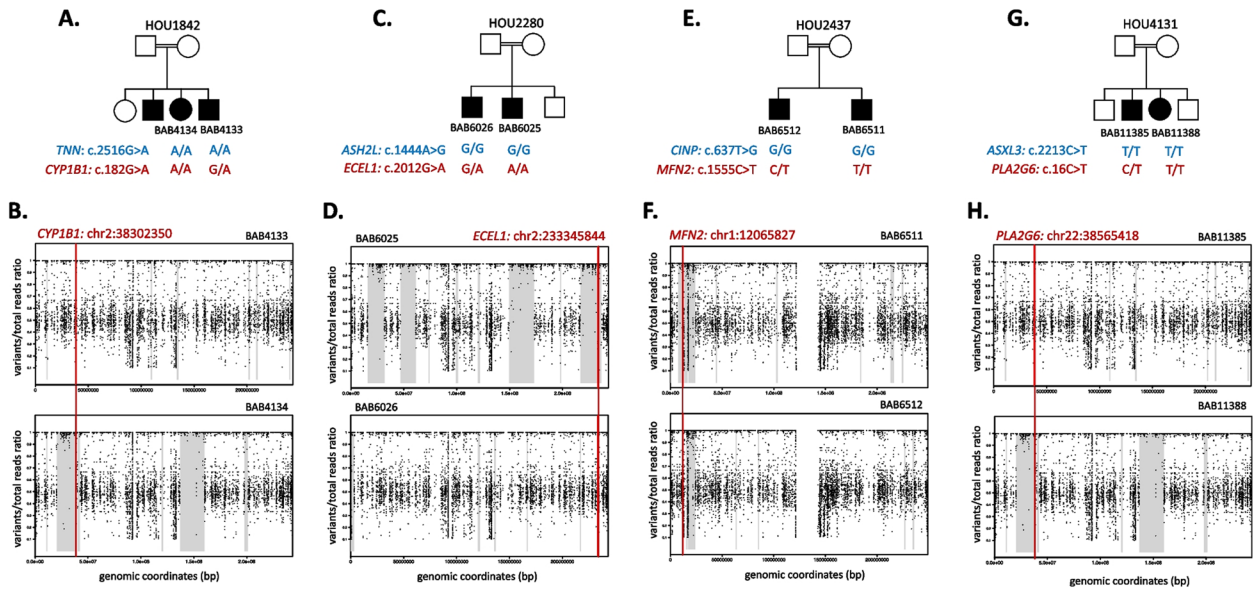
⁸ Human Genome Sequencing Center, Baylor College of Medicine, Houston, TX, USA

⁹ Department of Biostatistics and Medical Informatics, School of Medicine, Acibadem Mehmet Ali Aydinlar University, Istanbul, Turkey



© The Author(s) 2024. **Open Access** This article is licensed under a Creative Commons Attribution 4.0 International License, which permits use, sharing, adaptation, distribution and reproduction in any medium or format, as long as you give appropriate credit to the original author(s) and the source, provide a link to the Creative Commons licence, and indicate if changes were made. The images or other third party material in this article are included in the article's Creative Commons licence, unless indicated otherwise in a credit line to the material. If material is not included in the article's Creative Commons licence and your intended use is not permitted by statutory regulation or exceeds the permitted use, you will need to obtain permission directly from the copyright holder. To view a copy of this licence, visit <http://creativecommons.org/licenses/by/4.0/>. The Creative Commons Public Domain Dedication waiver (<http://creativecommons.org/publicdomain/zero/1.0/>) applies to the data made available in this article, unless otherwise stated in a credit line to the data.

Incorrect Figure 1

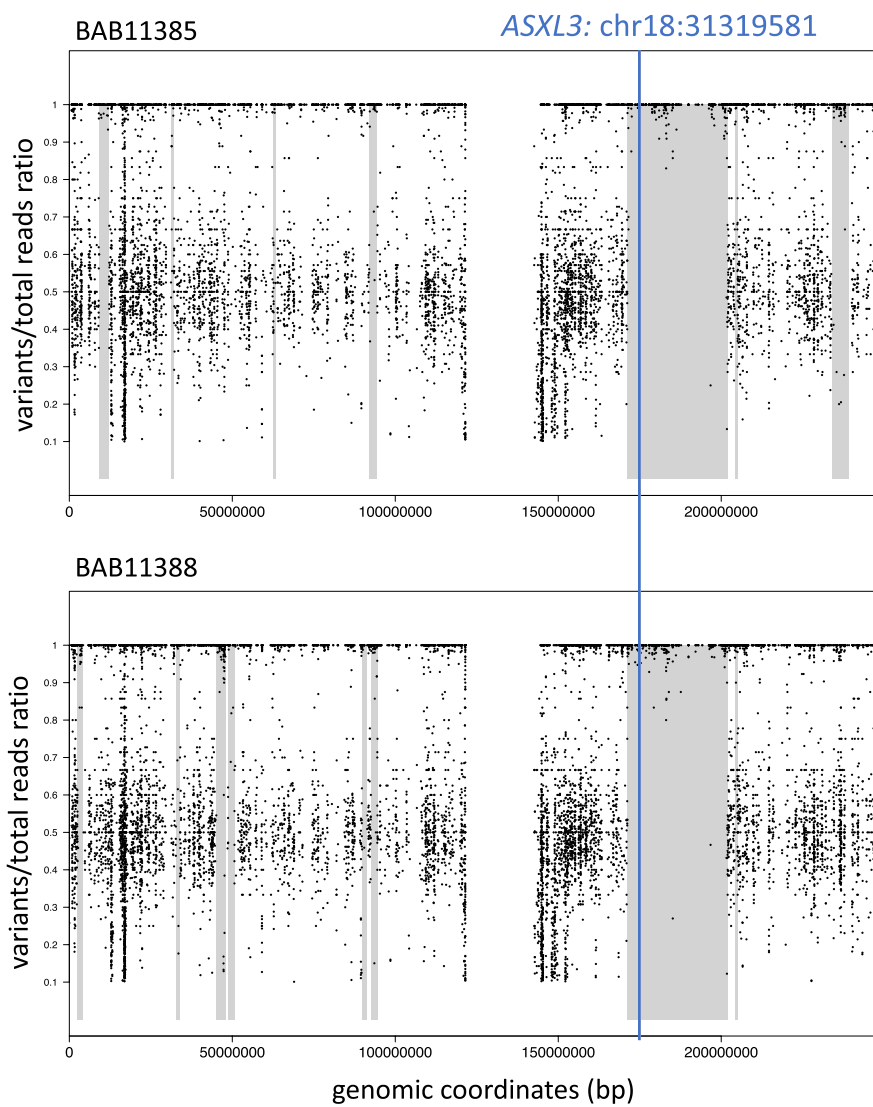


Supplementary Figure 5

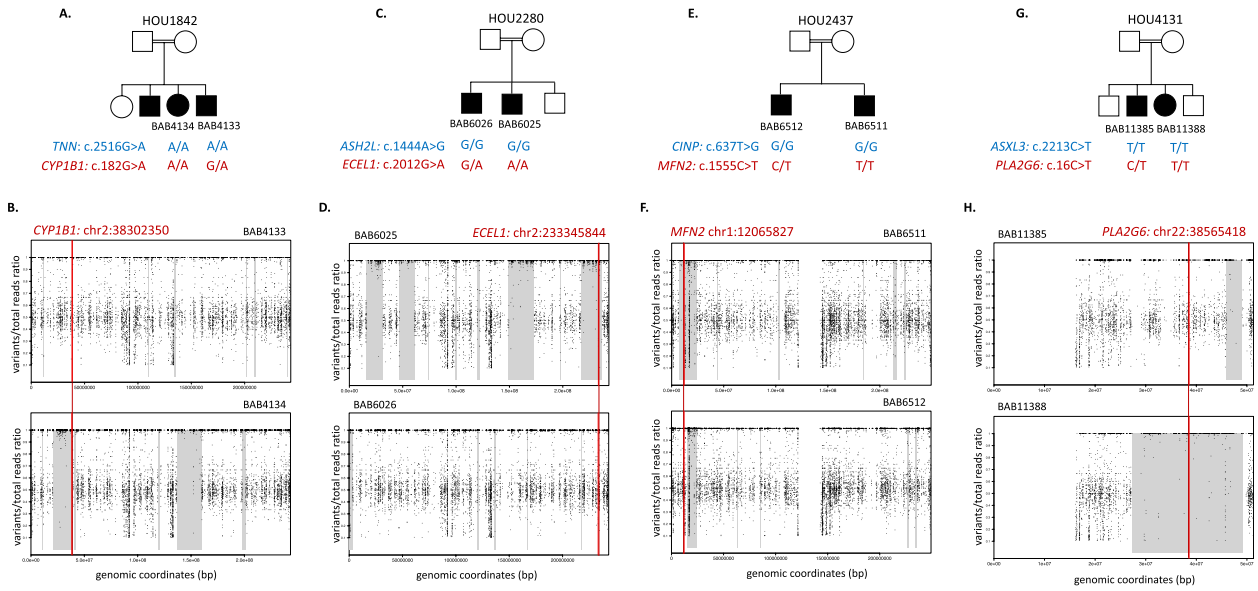
A.



B.



**Correct
Figure 1**

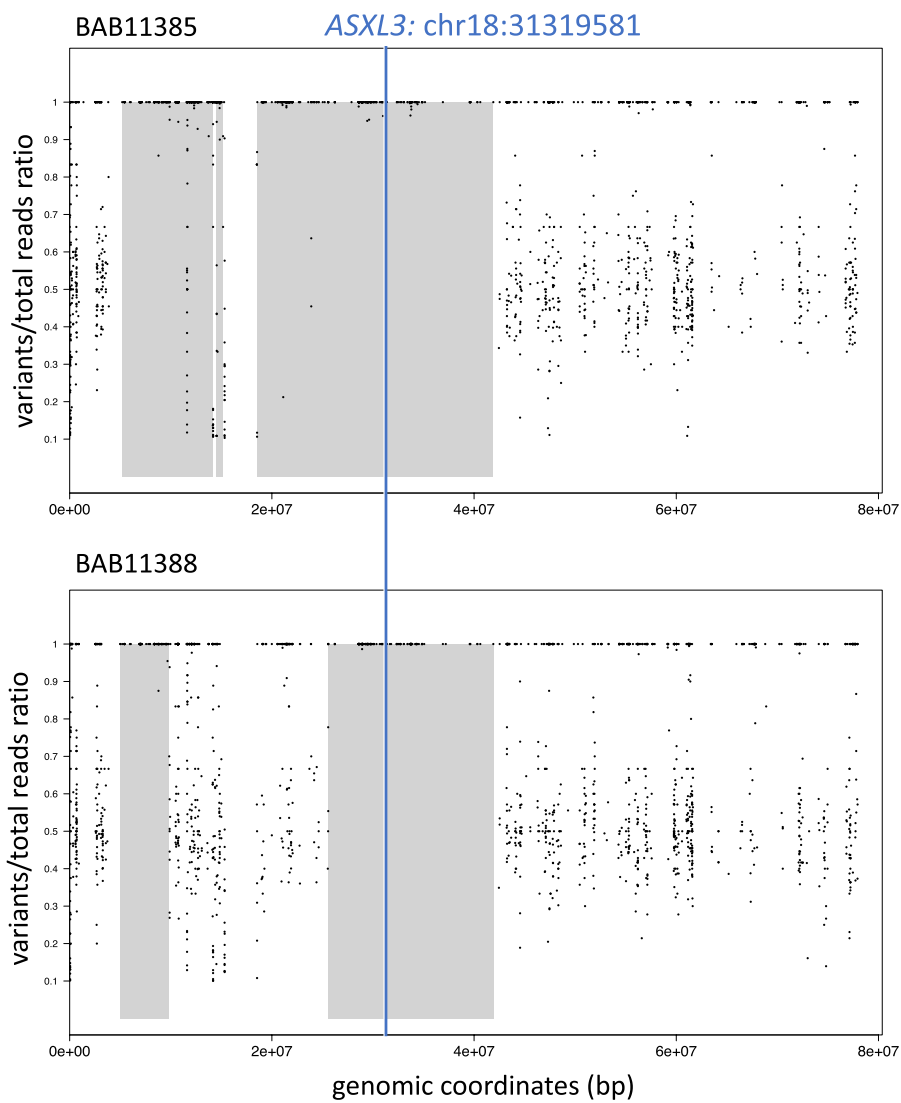


Supplementary Figure 5

A.



B.



The authors indicate that these errors do not affect any of the results nor the conclusions presented in the text of the study.

The Original Article has been corrected.

Published online: 07 August 2024

Reference

1. Bozkurt-Yozgatli, et al. Multilocus pathogenic variants contribute to intra-familial clinical heterogeneity: a retrospective study of sibling pairs with neurodevelopmental disorders. *BMC Med Genomics*. 2024;17:85. <https://doi.org/10.1186/s12920-024-01852-4>.