

Original Article

Risk factors and prediction model of peri-implantitis in post operative periodontitis patients

Xinyu Gao*, Dongdong Li*, Yanling Duan, Liling Wu

Department of Stomatology, The Third People's Hospital of Shenzhen, Shenzhen 518112, Guangdong, China.

*Equal contributors.

Received May 26, 2024; Accepted August 4, 2024; Epub September 15, 2024; Published September 30, 2024

Abstract: Objectives: To analyze the risk factors for peri-implantitis (PI) in patients with periodontitis after dental implantation and to establish a prediction model. Methods: A retrospective analysis was conducted using clinical data from 208 patients with periodontitis who required implant restoration due to tooth loss from various causes. These patients, meeting the indications for dental implantation, were treated at the Third People's Hospital of Shenzhen from January 2019 to December 2023. The dataset was divided into training and validation sets in a 7:3 ratio. Logistic regression was used to identify risk factors for PI in these patients. Significant variables from the regression analysis were incorporated into the prediction model. The model's accuracy was evaluated using Receiver Operating Characteristic (ROC) and calibration curves. A decision curve was also drawn to assess the clinical utility of the model. The model's performance was evaluated using the Area Under the Curve (AUC), accuracy, sensitivity, and specificity. Results: Among the 208 patients, 68 developed PI, resulting in an incidence rate of 32.69%. Independent risk factors for PI included smoking history, diabetes, irregular periodontal treatment, high alveolar bone resorption, and a high plaque index score (all $P < 0.05$). Based on these risk factors, a logistic regression model was constructed to predict the occurrence of PI. The AUC of the logistic regression model was 0.911 for the training set and 0.823 for the validation set. The calibration curve indicated that the predicted probabilities closely matched the actual probabilities. The decision curve showed that the threshold probabilities for the training and validation sets were 0.1 to 0.85 and 0.1 to 0.81, respectively, suggesting that the net benefit was maximized within these ranges. Conclusion: Smoking history, diabetes, irregular periodontal treatment, high alveolar bone resorption, and a high plaque index score are significant risk factors for PI in patients with periodontitis. The logistic regression model constructed from these factors effectively predicts the probability of PI, providing a valuable reference for the prevention and management of PI.

Keywords: Periodontitis, postoperative, peri-implantitis, risk factors, prediction model

Introduction

Oral diseases have always significantly impacted human health. With improvements in diet and oral health awareness, dental implant restoration has become the preferred choice for patients with missing or defective teeth due to its stability, low foreign body sensation, and non-damaging effects on adjacent teeth. However, implant failure still occurs in clinical practice, with peri-implantitis (PI) being the most common cause [1]. PI is a frequent biological complication of dental implant restoration, beginning as peri-implant mucositis and progressing to PI. Clinical manifestations

include soft tissue inflammation, peri-implant bone resorption, and even implant loosening and loss [2, 3]. The soft and hard tissue destruction around the implant caused by PI results from mixed anaerobic bacterial infections, similar to periodontitis [4]. Additionally, periodontal pathogens in periodontitis patients can colonize around the implant, increasing the likelihood and severity of PI in these patients [5]. Preventing and treating PI is considered a major global health challenge. Therefore, predicting the probability of PI in patients with a history of periodontitis is crucial for enhancing doctor-patient communication and improving the success rate of implant restorations.

Peri-implantitis risk factors in periodontitis patients

Currently, there is no effective treatment for PI, and the therapeutic effects are controversial. Most studies on PI in post-implantation periodontitis patients focus on risk factor analysis [6], and no effective risk prediction model has been developed. Logistic regression models are simple, convenient, and widely used for individual clinical outcome predictions [7-9]. This study aims to analyze the independent risk factors for PI in patients with a history of periodontitis and establish a logistic regression prediction model to provide a reference for predicting, preventing, and early treatment of PI in these patients.

Materials and methods

Research subjects

This study was approved by the Ethics Committee of the Third People's Hospital of Shenzhen. A retrospective analysis was conducted on 208 periodontitis patients who required implant restoration due to tooth loss from various causes and who met the dental implantation criteria at the Third People's Hospital of Shenzhen from January 2019 to December 2023. All patients successfully underwent dental implantation.

Inclusion criteria: (1) all subjects met the diagnostic criteria for periodontitis [10]; (2) all patients were ≥ 18 years old with complete baseline information, impact examination and other related data; (3) all patients were treated with periodontal treatment before operation, ensuring a stable periodontal condition; (4) all patients met oral implant indications.

Exclusion criteria: (1) patients with other oral diseases, such as leukoplakia, or herpes; (2) patients with diabetes, osteoporosis or severe systemic diseases that may affect periodontal disease; (3) pregnant or lactating women, or patients unable to complete regular follow-up; (4) patients taking bisphosphonates and warfarin.

Diagnostic criteria for periodontitis: Periodontitis sites [11]: gingival index > 0 , probing depth > 3 mm and clinical attachment loss ≥ 3 mm. Criteria [12]: No or mild periodontitis: maximum attachment loss of 0-2 mm. Moderate periodontitis: maximum attachment loss of 3-4

mm. Severe periodontitis: maximum attachment loss of ≥ 5 mm.

Diagnostic criteria for PI [13]: Based on the consensus report of the 2017 International Symposium on New Periodontal Classification [19]: For patients with baseline data: presence of bleeding or pus on probing, increased probing depth compared to baseline, and bone resorption at the alveolar crest level one year after implant restoration. For patients without baseline data: probing depth ≥ 6 mm and/or bone resorption around the implant ≥ 3 mm, accompanied by bleeding or empyema.

Methods

Data collection: Medical records of all enrolled subjects were collected using the hospital medical record system, including: gender, age, smoking history (continuous or cumulative smoking for more than 6 months ≥ 1 cigarette/d), drinking history (drinking ≥ 1 time a week in the past year), diabetes, hypertension, osteoarthropathy, regular periodontal treatment, alveolar bone resorption degree, implant system, implant position, implant method, implant diameter, implant length, peri-implant mucosal thickness, bone increment, load time, keratinized gingival width, and dental plaque index.

Grouping methods: Patients were grouped based on the diagnostic criteria for PI: PI group (n = 68): Patients with peripheral inflammation, characterized by bleeding on probing and pus in the implant pocket, with marginal bone loss ≥ 2 mm as shown by imaging [14]. NPI group (n = 140): Patients without peripheral inflammation.

Clinical validation: From January to April 2024, 42 periodontitis patients requiring implant restoration due to tooth loss and meeting dental implantation criteria were collected. All patients successfully completed dental implantation.

Data preprocessing

To eliminate interactions between different factors, data centralization and standardization were performed. In this study, 70% of the patients with PI were randomly selected as the training set (n = 145), and 30% were used as the validation set (n = 63).

Peri-implantitis risk factors in periodontitis patients

Statistical analysis

Statistical analysis was conducted using SPSS 26 and R 4.2.1 software. Measurement data were expressed as mean \pm SD, and t-tests were performed. Count data were recorded as rates (%) and tested using the χ^2 test. Logistic regression was used to analyze the risk factors for PI in patients with periodontitis after operation, and significant variables from the regression analysis were included in the prediction model. The model's discrimination and calibration were evaluated using the Receiver Operating Characteristic (ROC) curve and calibration curve. The decision curve and confusion matrix were calculated in the validation set to assess the clinical utility of the PI risk prediction model. The model's predictive value was evaluated based on the Area Under the Curve (AUC), accuracy, sensitivity, and specificity, and the logistic regression model's predictive ability was analyzed.

A *p*-value of < 0.05 was considered statistically significant.

Results

Comparison of clinical data between the PI and NPI groups

A total of 208 patients with periodontitis were included in this study. Among them, 68 patients developed PI after implantation, resulting in an incidence rate of 32.69%. Significant differences were observed in smoking history, diabetes, regular periodontal treatment, alveolar bone resorption degree, and dental plaque index between the PI group and the NPI group (all $P < 0.05$). Other aspects were similar (all $P > 0.05$). See **Table 1**.

Comparison of data in the training set and validation set

The differences between PI and NPI in both the training set and the validation set were statistically significant ($P < 0.05$). See **Table 2**.

Regression analysis

The statistically significant indicators from the clinical data analysis were included as independent variables in the multivariate logistic regression analysis, with the occurrence of PI in patients with periodontitis as the dependent variable (occurrence = 1, non-occurrence = 0).

The relevant variables were assigned as follows: smoking history (yes = 1, no = 0), diabetes (yes = 1, no = 0), regular periodontal treatment (yes = 1, no = 0), alveolar bone resorption degree, and dental plaque index were included as actual values. The results indicated that smoking history, diabetes, lack of regular periodontal treatment, alveolar bone resorption degree, and dental plaque index were risk factors for PI in patients with periodontitis after dental implantation ($P < 0.05$). See **Table 3**.

Model construction

Based on the results of the multivariate logistic regression analysis, the model was constructed using smoking history, diabetes, regular periodontal treatment, alveolar bone resorption, and plaque index as variables. The model formula is as follows: Logistic = $-3.388 + 1.598 \times$ smoking history + $1.440 \times$ diabetes - $1.891 \times$ regular periodontal treatment + $0.928 \times$ alveolar bone resorption degree + $0.449 \times$ dental plaque index. The nomogram model is shown in **Figure 1**.

ROC curve analysis of the prediction model

To further evaluate the predictive effectiveness of the logistic regression model for PI in periodontitis patients after dental implantation, ROC curves for both the training and validation sets were plotted. The AUC for the training set was 0.911 (**Figure 2A**), and the AUC for the validation set was 0.823 (**Figure 2B**), indicating that the logistic regression model has a good predictive rate.

Calibration curve analysis of prediction model

The calibration curves showed that the prediction curves for both the training and validation sets were close to the ideal curves (**Figure 3A and 3B**), indicating that the model's predicted probabilities are consistent with the actual probabilities. The Hosmer-Lemeshow test result was $\chi^2 = 10.671$, $P = 0.221$ ($P > 0.05$), suggesting that the model was well fitted.

Decision curve analysis of the prediction model

The decision curve analysis showed that the threshold probabilities for the training set and validation set were 0.1-0.85 (**Figure 4A**) and

Peri-implantitis risk factors in periodontitis patients

Table 1. Comparison of clinical data analysis between the PI and NPI groups [n (%), (Mean ± SD)]

Features	Classification	PI group (n = 68)	NPI group (n = 140)	t/ χ^2	P
Male		39 (57.35)	74 (52.86)	0.373	0.541
Age (year)		53.20±7.28	53.17±6.54	0.034	0.973
Smoking history		45 (66.18)	33 (23.57)	35.447	< 0.001
Drinking history		35 (51.47)	56 (40.0)	2.447	0.118
Diabetes		44 (64.71)	35 (25.0)	30.633	< 0.001
Hypertension		36 (52.94)	65 (46.43)	0.777	0.378
Osteoarthritis		34 (50.0)	63 (45.0)	0.460	0.498
Periodic periodontal treatment		28 (41.18)	32 (22.86)	26.159	< 0.001
Alveolar bone resorption degree	Level 1	17 (25.00)	64 (45.71)	19.440	< 0.001
	Level 2	21 (30.88)	53 (37.86)		
	Level 3	30 (44.12)	23 (16.43)		
Implant system	Ankylos	32 (47.06)	73 (52.14)	0.473	0.491
	Nobel	36 (52.94)	67 (47.86)		
Dental implant position	Anterior teeth	16 (23.53)	31 (22.14)	0.765	0.682
	Premolars	29 (42.65)	53 (37.86)		
	Molars	23 (33.82)	56 (40.0)		
Embedding method	Submersible	42 (61.76)	78 (55.71)	0.686	0.407
	Non-submerged	26 (38.24)	62 (44.29)		
Plant diameter	< 3.5 mm	18 (26.47)	35 (25.0)	0.915	0.633
	3.6-5 mm	31 (45.59)	73 (52.14)		
	> 5 mm	19 (27.94)	32 (22.86)		
Planting length	< 8 mm	20 (29.41)	40 (28.57)	1.626	0.443
	10-13 mm	21 (30.88)	33 (23.57)		
	> 13 mm	27 (39.71)	67 (47.86)		
Mucosal thickness around the implant < 2 mm	Yes	38 (55.88)	79 (56.43)	0.006	0.941
	No	30 (44.12)	61 (43.57)		
Bone augmentation surgery		18 (26.47)	29 (20.71)	0.867	0.352
Loading time	1-3 years	42 (61.76)	93 (66.43)	0.437	0.509
	4-5 years	26 (38.24)	47 (33.57)		
Keratinized gingival width	< 2 mm	29 (42.65)	45 (32.14)	2.203	0.138
	≥ 2 mm	39 (57.35)	95 (67.86)		
Dental plaque index	0 point	17 (25.00)	51 (36.43)	8.038	0.045
	1 point	13 (19.12)	41 (29.29)		
	2 points	16 (23.53)	25 (17.86)		
	3 points	22 (32.35)	23 (16.42)		

Note: PI is peri-implantitis; NPI is non-peri-implantitis.

0.1-0.81 (**Figure 4B**), respectively, suggesting that patients derived the greatest net benefit within these ranges.

Clinical validation

To verify the clinical value of the logistic regression model, this study prospectively included 42 periodontitis patients. The results showed that the specificity, sensitivity, and accuracy of

the clinical validation were 0.792, 0.722, and 0.762, respectively (**Table 4**).

Discussion

Periodontitis is a chronic inflammatory disease affecting the supporting tissues around natural teeth, characterized by soft tissue inflammation and alveolar bone resorption, and it is the main cause of tooth loss in adults [15]. With

Peri-implantitis risk factors in periodontitis patients

Table 2. Data analysis of training set and validation set [n (%), (Mean ± SD)]

Features	Classification	Training set (n = 145)	Validation set (n = 63)	t/ χ^2	P
Classification	PI	40 (27.59)	28 (44.44)	5.672	0.017
	NPI	105 (72.41)	35 (55.56)		
Male		76 (52.41)	37 (58.73)	0.706	0.401
Age (year)		54.33±6.75	54.28±7.16	0.048	0.562
Smoking history		56 (38.62)	22 (34.92)	0.257	0.613
Drinking history		55 (37.93)	33 (52.38)	3.757	0.053
Diabetes		54 (37.24)	32 (50.79)	3.326	0.068
Hypertension		70 (48.28)	29 (46.03)	0.089	0.766
Osteoarthritis		67 (46.21)	30 (47.62)	0.035	0.851
Periodic periodontal treatment		50 (34.48)	25 (39.68)	0.515	0.473
Alveolar bone resorption degree	Level 1	51 (35.17)	20 (31.75)	0.835	0.659
	Level 2	46 (31.73)	18 (28.57)		
	Level 3	48 (33.10)	25 (39.68)		
Implant system	Ankylos	74(51.03)	32 (50.79)	0.001	0.975
	Nobel	71 (48.97)	31 (49.21)		
Dental implant position	Anterior teeth	42 (28.97)	15 (23.81)	1.877	0.391
	Premolars	53 (36.55)	20 (31.75)		
	Molars	50 (34.48)	28 (44.44)		
Embedding method	Submersible	81 (55.86)	29 (46.03)	1.703	0.192
	Non-submerged	64 (44.14)	34 (53.97)		
Plant diameter	< 3.5 mm	45 (31.03)	19 (30.16)	0.265	0.876
	3.6-5 mm	59 (40.69)	24 (38.09)		
	> 5 mm	41 (28.28)	20 (31.75)		
Planting length	< 8 mm	42 (28.97)	18 (28.57)	0.133	0.935
	10-13 mm	50 (34.48)	24 (38.09)		
	> 13 mm	43 (29.65)	21 (33.34)		
Mucosal thickness around the implant < 2 mm	Yes	86 (59.31)	30 (47.62)	2.434	0.119
	No	59 (40.69)	33 (52.38)		
Bone augmentation surgery		43 (29.66)	24 (38.09)	1.433	0.231
Loading time	1-3 years	91 (62.76)	33 (52.38)	1.965	0.161
	4-5 years	54 (37.24)	30 (47.62)		
Keratinized gingival width	< 2 mm	54 (37.24)	28 (44.44)	0.954	0.329
	≥ 2 mm	91 (62.76)	35 (5.56)		
Dental plaque index	0 point	49 (33.79)	18 (28.57)	3.835	0.280
	1 point	33 (22.76)	21 (33.34)		
	2 points	28 (19.31)	14 (22.22)		
	3 points	35 (24.14)	10 (15.87)		

advancements in implant materials and technology and the improvement of China's economic level, more patients with periodontitis opt for dental implants to restore missing teeth. However, periodontitis pathogens can colonize around the implant, significantly increasing the probability of PI. The mechanism of PI is complex, and if not controlled promptly and effec-

tively, it can lead to implant loosening, aggravated bone resorption, and reduced implantation success rates [16, 17]. Additionally, the lack of effective treatments for PI highlights the importance of analyzing PI risk factors in periodontitis patients, conducting preoperative evaluations, and reducing PI hazards to ensure long-term implant retention.

Peri-implantitis risk factors in periodontitis patients

Table 3. Regression analysis

Risk Factor	B	S.E.	Wald value	OR value	95% CI	P value
Smoking history	1.598	0.399	16.048	4.944	2.262-10.805	< 0.001
Diabetes	1.440	0.401	12.877	4.222	1.922-9.270	< 0.001
Regular periodontal treatment	-1.891	0.413	20.954	0.151	0.067-0.339	< 0.001
Alveolar bone resorption degree	0.928	0.251	13.698	2.529	1.547-4.133	< 0.001
Dental plaque index	0.449	0.170	6.598	1.566	1.122-2.187	0.008
Constant	-3.388	0.659	26.442	0.034	-	-

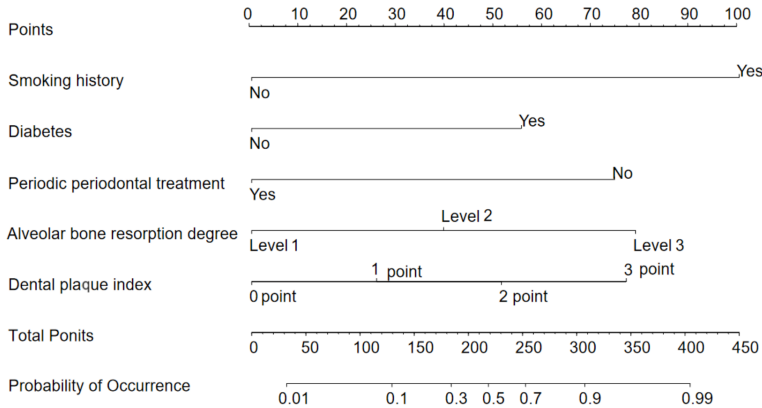


Figure 1. Nomogram model.

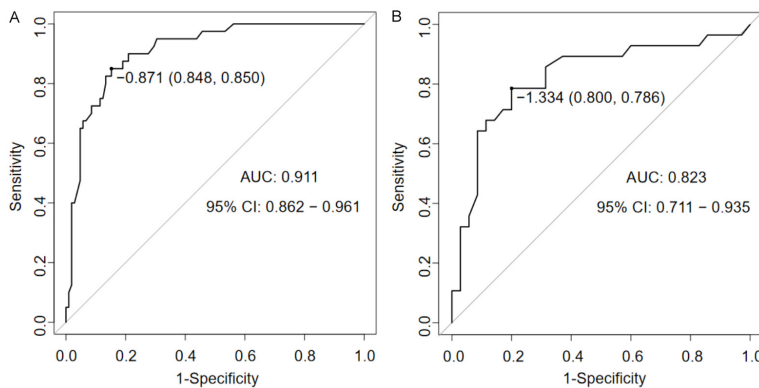


Figure 2. ROC curve of the logistic regression model (A is the training set, B is the validation set).

Current studies suggest that the factors influencing PI after implant surgery in patients with periodontitis are similar to those of implant failure, including smoking history, alveolar bone resorption, and periodontal conditions [18, 19]. The occurrence of PI is also affected by factors such as the severity of periodontal disease, postoperative infection, and treatment response. To comprehensively identify the risk factors for PI in patients with periodontitis, this research combined findings from relevant re-

ports on PI risk factors both domestically and internationally and analyzed multiple independent risk factors in the study subjects.

The results indicated that smoking history, diabetes, lack of regular periodontal treatment, high alveolar bone resorption degree, and high dental plaque index were independent risk factors for PI in patients with periodontitis. The consensus is that smoking adversely affects oral health. Long-term smoking increases the detection of inflammatory factors in gingival crevicular fluid [20, 21], inhibits peri-implant osseointegration, and impedes post-operative healing. Compared to non-smokers, patients with periodontitis who smoke have a significantly higher risk and severity of PI [22].

Diabetes significantly increases the risk of PI in periodontitis patients due to the long-term abnormal metabolism of hyperglycemia. Chronic high blood glucose levels lead to microvascular disease and hypoxia in periodontal tissues, accelerating the reproduction of pathogenic bacteria and increasing the risk of bacterial infection, thus elevating the risk of PI after dental implantation in periodontitis patients [23, 24].

Basic periodontal treatment has been shown to significantly improve the health of peri-implant tissues, reduce the incidence of PI, and pro-

Peri-implantitis risk factors in periodontitis patients

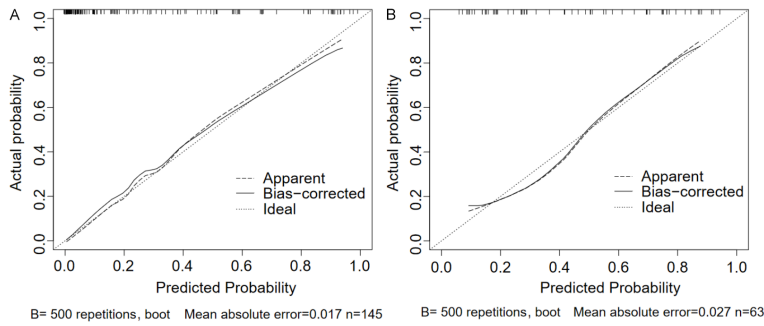


Figure 3. Calibration curve of the logistic regression model (A is the training set, B is the validation set).

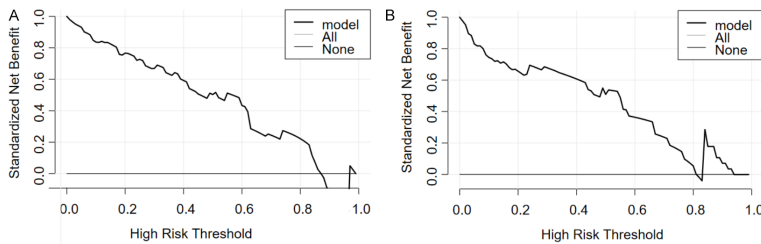


Figure 4. Decision curve of the logistic regression model (A is the training set, B is the validation set).

Table 4. Clinical validation evaluation

Prediction results	Gold standard		Footing
	Occur	No occur	
Occur	13	5	18
No occur	5	19	24
Footing	18	24	42

mote the long-term retention of implants [25]. In this study, the increased risk of PI in periodontitis patients without regular periodontal treatment may be related to plaque accumulation around the implant. Therefore, it is crucial for periodontitis patients to undergo regular periodontal treatment to prevent PI.

Plaque is an aggregate formed by bacterial populations adhering to an extracellular matrix. When an implant is exposed to the oral environment, bacteria can easily accumulate on its surface, forming plaque, which induces and exacerbates PI. The plaque index is a key indicator of oral health. Ferreira et al. [26] found that patients with a plaque index ≥ 2 had a higher probability of PI (OR = 14.3). Wada et al. [27] studied the incidence of peri-implant diseases in a Japanese population with a loading time of three years or more and found that the

plaque index was not only associated with peri-implant mucositis but also proved to be a risk factor for PI. In this research, the plaque index was also identified as a risk factor for PI in patients with periodontitis, consistent with previous findings. The occurrence of PI takes time, and the plaque index can change over time. Therefore, oral health management plays a crucial role in plaque control.

Moreover, the attenuation of alveolar bone mass caused by periodontitis is a key factor affecting the early stability of implants. Insufficient periodontal bone mass leads to a low implant-bone bonding rate and increases the risk of PI [28]. Severe bone resorption can cause mechanical stress on periodontal soft and hard

tissues, inducing a local inflammatory response. When dental plaque accumulates, bone resorption can interact with bacterial factors to accelerate the development of PI, further aggravating bone resorption [29]. The patients included in this research all experienced tooth loss due to periodontitis. The degree of alveolar bone resorption varied individually, with patients exhibiting higher degrees of resorption at greater risk for PI. Studies indicate that patients with severe periodontitis have more pronounced alveolar bone resorption, deeper periodontal pockets, and more significant inflammation. Even if bacterial infections are controlled, the aggravation of bone resorption leads to the loss of periodontal tissue, indicating that the preoperative state of alveolar bone resorption significantly impacts postoperative PI [30].

Therefore, in clinical practice, evaluating alveolar bone resorption is essential, and intervention measures should be taken if necessary to reduce the mechanical load on implants. For periodontitis patients with extensive alveolar bone resorption, appropriate implants and surgical methods should be selected based on the extent and severity of bone defects assessed by imaging. Additionally, the literature has iden-

tified some gene polymorphisms that may be related to PI [31]. However, current research on the relationship between gene polymorphisms of inflammation and bone metabolism-related proteins and PI is insufficient, suggesting a potential focus for future research.

Logistic regression models can screen factors affecting the occurrence of periodontitis and evaluate the relative risk for patients [32]. In recent years, many studies have used logistic regression models to predict the risk of oral diseases effectively. These models have been used to predict the risk of root caries [33], the benign and malignant nature of oral parotid tumors [34], and the risk of PI in diabetic patients [35]. To predict the probability of PI in patients with periodontitis, this study established a logistic regression prediction model based on selected risk factors.

The results demonstrated that the logistic regression model had good predictive value for PI risk after dental implantation in patients with periodontitis. The model's accuracy and discrimination were further evaluated using ROC and calibration curves. The results indicated that the prediction curves for both the training set and the validation set fitted well with the ideal curve, signifying good predictive value. The AUC of the ROC curve for the training set and validation set were 0.911 and 0.823, respectively, highlighting the model's robust predictive ability. These findings suggest that the logistic regression model constructed in this research can be an effective tool for clinically predicting PI in patients with periodontitis. By identifying and mitigating relevant risk factors, the model can help reduce PI incidence, lower healthcare costs, improve implantation success rates, and enhance patient satisfaction.

This study may be limited by differences in sample size and feature selection between studies, leading to potential deviations in the model's absolute prediction efficiency parameters. These differences may stem from variations in baseline characteristics such as age and smoking history among different populations, as well as subjective judgments during feature screening. Future research should involve more high-quality datasets to validate and establish reliable prediction models to guide clinical decision-making.

In summary, smoking history, diabetes, failure to perform regular periodontal treatment, high alveolar bone resorption, and high dental plaque index scores are all significant risk factors for PI in patients with periodontitis. Targeted interventions for these risk factors and the use of a stable and accurate prediction model can effectively reduce the incidence of PI and improve treatment outcomes. Furthermore, compared to traditional statistical methods, machine learning algorithms have shown higher accuracy in prediction results, offering potential for individualized PI risk prediction in periodontitis patients and warranting clinical promotion.

Disclosure of conflict of interest

None.

Address correspondence to: Xinyu Gao, Department of Stomatology, The Third People's Hospital of Shenzhen, No. 29, Bujibulan Road, Longgang District, Shenzhen 518112, Guangdong, China. Tel: +86-61222333 Ext. 11325; E-mail: gaoxinyu-ah1209@163.com

References

- [1] Liu M, Xu Z and Li H. Effect of orthodontic combined with implant repair on aesthetic effect and gingival crevicular fluid factor in patients with dentition defect and periodontitis. *Biomed Res Int* 2022; 2022: 8065313.
- [2] Güney Z, Karacaoglu F, Baris E, Gezer KG and Akkaya MM. The relationship of peri-implant soft tissue wound healing with implant cover screw design: cross-sectional study. *Clin Implant Dent Relat Res* 2024; 26: 299-308.
- [3] Renvert S, Persson GR, Pirihi FQ and Camargo PM. Peri-implant health, peri-implant mucositis, and peri-implantitis: case definitions and diagnostic considerations. *J Periodontol* 2018; 89 Suppl 1: S304-S312.
- [4] Wang Q and Meng HX. Research progress in microbiological characteristics of peri-implant disease. *Zhonghua Kou Qiang Yi Xue Za Zhi* 2017; 52: 773-776.
- [5] Rocuzzo A, Imber JC, Marruganti C, Salvi GE, Ramieri G and Rocuzzo M. Clinical outcomes of dental implants in patients with and without history of periodontitis: a 20-year prospective study. *J Clin Periodontol* 2022; 49: 1346-1356.
- [6] Ravidà A, Siqueira R, Di Gianfilippo R, Kaur G, Giannobile A, Galindo-Moreno P, Wang CW and Wang HL. Prognostic factors associated with

Peri-implantitis risk factors in periodontitis patients

- implant loss, disease progression or favorable outcomes after peri-implantitis surgical therapy. *Clin Implant Dent Relat Res* 2022; 24: 222-232.
- [7] Pereira D, Machado V, Botelho J, Proença L, Rua J, Lemos C, Mendes JJ and Delgado AS. Impact of malocclusion, tooth loss and oral hygiene habits on quality of life in orthodontic patients: a cross-sectional study. *Int J Environ Res Public Health* 2021; 18: 7145.
- [8] El Tantawi M, Folayan MO, Oginni O, Adeniyi AA, Mapayi B, Yassin R, Chukwumah NM and Sam-Agudu NA. Association between mental health, caries experience and gingival health of adolescents in sub-urban Nigeria. *BMC Oral Health* 2021; 21: 223.
- [9] Chen GQ, Duan Y, Wang JF, Lian Y and Yin XL. Serum α -Klotho associated with oral health among a nationally representative sample of US adults. *Front Endocrinol (Lausanne)* 2022; 13: 970575.
- [10] Brito LF, Taboza ZA, Silveira VR, Teixeira AK and Rego RO. Diagnostic accuracy of severe periodontitis case definitions: comparison of the CDC/AAP, EFP/AAP, and CPI criteria. *J Periodontol* 2022; 93: 867-876.
- [11] Casado PL, Pereira MC, Duarte ME and Granjeiro JM. History of chronic periodontitis is a high risk indicator for peri-implant disease. *Braz Dent J* 2013; 24: 136-41.
- [12] Timmerman MF and van der Weijden GA. Risk factors for periodontitis. *Int J Dent Hyg* 2006; 4: 2-7.
- [13] Berglundh T, Armitage G, Araujo MG, Avila-Ortiz G, Blanco J, Camargo PM, Chen S, Cochran D, Derks J, Figuero E, Hämmerle CHF, Heitz-Mayfield LJA, Huynh-Ba G, Iacono V, Koo KT, Lambert F, McCauley L, Quirynen M, Renvert S, Salvi GE, Schwarz F, Tarnow D, Tomasi C, Wang HL and Zitzmann N. Peri-implant diseases and conditions: consensus report of workgroup 4 of the 2017 World Workshop on the Classification of Periodontal and Peri-Implant Diseases and Conditions. *J Periodontol* 2018; 89 Suppl 1: S313-S318.
- [14] Pan YH, Lin HK, Lin JC, Hsu YS, Wu YF, Salamanca E and Chang WJ. Evaluation of the peri-implant bone level around platform-switched dental implants: a retrospective 3-year radiographic study. *Int J Environ Res Public Health* 2019; 16: 2570.
- [15] Muramatsu R, Sato T, Hamamura K, Miyazawa K, Takeguchi A, Tabuchi M, Togari A and Goto S. Guanabenz inhibits alveolar bone resorption in a rat model of periodontitis. *J Pharmacol Sci* 2021; 147: 294-304.
- [16] Rocuzzo M, Mirra D, Pittoni D, Ramieri G and Rocuzzo A. Reconstructive treatment of peri-implantitis infrabony defects of various configurations: 5-year survival and success. *Clin Oral Implants Res* 2021; 32: 1209-1217.
- [17] Shrivastava PK, Mahmood A, Datta S, Sengar P and Sybil D. Tetracycline impregnated bone grafts in the management of peri-implantitis and guided bone regeneration around dental implants: a systematic review. *Saudi Dent J* 2022; 34: 689-698.
- [18] Alhakeem M, Kanounisabet N, Nowzari H, Asl-roosta H and Moslemi N. Risk indicators of long-term outcome of implant therapy in patients with a history of severe periodontitis or no history of periodontitis: a retrospective cohort study. *Int J Dent Hyg* 2023; 21: 227-237.
- [19] Wada M, Mameno T, Onodera Y, Matsuda H, Daimon K and Ikebe K. Prevalence of peri-implant disease and risk indicators in a Japanese population with at least 3 years in function-a multicentre retrospective study. *Clin Oral Implants Res* 2019; 30: 111-120.
- [20] Abduljabbar T, Akram Z, Vohra F, Warnakulasuriya S and Javed F. Assessment of interleukin-1 β , interleukin-6, and tumor necrosis factor- α levels in the peri-implant sulcular fluid among waterpipe (narghile) smokers and never-smokers with peri-implantitis. *Clin Implant Dent Relat Res* 2018; 20: 144-150.
- [21] Amaral AL, da Costa Andrade PA, Lwaleed BA and Andrade SA. Impacts of smoking on oral health-what is the role of the dental team in smoking cessation? *Evid Based Dent* 2023; 24: 186-187.
- [22] Beklen A, Sali N and Yavuz MB. The impact of smoking on periodontal status and dental caries. *Tob Induc Dis* 2022; 20: 72.
- [23] Wagner J, Spille JH, Wiltfang J and Naujokat H. Systematic review on diabetes mellitus and dental implants: an update. *Int J Implant Dent* 2022; 8: 1.
- [24] Serón C, Olivero P, Flores N, Cruzat B, Ahumada F, Gueyffier F and Marchant I. Diabetes, periodontitis, and cardiovascular disease: towards equity in diabetes care. *Front Public Health* 2023; 11: 1270557.
- [25] Lin CY, Chen Z, Pan WL and Wang HL. The effect of supportive care in preventing peri-implant diseases and implant loss: a systematic review and meta-analysis. *Clin Oral Implants Res* 2019; 30: 714-724.
- [26] Ferreira SD, Martins CC, Amaral SA, Vieira TR, Albuquerque BN, Cota LOM, Esteves Lima RP and Costa FO. Periodontitis as a risk factor for peri-implantitis: systematic review and meta-analysis of observational studies. *J Dent* 2018; 79: 1-10.
- [27] Wada M, Mameno T, Onodera Y, Matsuda H, Daimon K and Ikebe K. Prevalence of peri-implant disease and risk indicators in a Japanese population with at least 3 years in function-a

Peri-implantitis risk factors in periodontitis patients

- multicentre retrospective study. *Clin Oral Implants Res* 2019; 30: 111-120.
- [28] Zhou R, Shen L, Yang C, Wang L, Guo H, Yang P and Song A. Periodontitis may restrain the mandibular bone healing via disturbing osteogenic and osteoclastic balance. *Inflammation* 2018; 41: 972-983.
- [29] Chen L, Tong Z, Luo H, Qu Y, Gu X and Si M. Titanium particles in peri-implantitis: distribution, pathogenesis and prospects. *Int J Oral Sci* 2023; 15: 49.
- [30] Vagia P, Papalou I, Burgy A, Tenenbaum H, Huck O and Davideau JL. Association between periodontitis treatment outcomes and peri-implantitis: a long-term retrospective cohort study. *Clin Oral Implants Res* 2021; 32: 721-731.
- [31] Lafuente-Ibáñez-de-Mendoza I, Marichalar-Mendia X, Setién-Olarra A, García-de-la-Fuente AM, Martínez-Conde-Llamosas R and Aguirre-Urizar JM. Genetic polymorphisms of inflammatory and bone metabolism related proteins in a population with dental implants of the Basque Country. A case-control study. *BMC Oral Health* 2024; 24: 659.
- [32] Altun E, Walther C, Borof K, Petersen E, Lieske B, Kasapoudis D, Jalilvand N, Beikler T, Jagemann B, Zyriax BC and Aarabi G. Association between dietary pattern and periodontitis-a cross-sectional study. *Nutrients* 2021; 13: 4167.
- [33] Fee PA, Cassie H, Clarkson JE, Hall AF, Ricketts D, Walsh T and Goulão B. Development of a root caries prediction model in a population of dental attenders. *Caries Res* 2022; 56: 429-446.
- [34] Hu Z, Guo J, Feng J, Huang Y, Xu H and Zhou Q. Value of T2-weighted-based radiomics model in distinguishing Warthin tumor from pleomorphic adenoma of the parotid. *Eur Radiol* 2023; 33: 4453-4463.
- [35] Su N, Teeuw WJ, Loos BG, Kosho MXF and van der Heijden GJMG. Development and validation of a screening model for diabetes mellitus in patients with periodontitis in dental settings. *Clin Oral Investig* 2020; 24: 4089-4100.