





Correction

Correction: Castelan-Ramírez et al. Schwann Cell Autophagy and Necrosis as Mechanisms of Cell Death by *Acanthamoeba*. *Pathogens* 2020, 9, 458

Ismael Castelan-Ramírez ^{1,2}, Lizbeth Salazar-Villatoro ³, Bibiana Chávez-Munguía ³, Citlalpetl Salinas-Lara ^{4,5}, Carlos Sánchez-Garibay ⁴, Catalina Flores-Maldonado ⁶, Dolores Hernández-Martínez ², Verónica Anaya-Martínez ⁷, María Rosa Ávila-Costa ⁸, Adolfo René Méndez-Cruz ⁹ and Maritza Omaña-Molina ^{2,*}

- ¹ Posgrado en Ciencias Biológicas, Universidad Nacional Autónoma de México (UNAM), Av. Ciudad Universitaria 3000, Coyoacán P.C. 04510, México; ismaelc.40@gmail.com
- ² Laboratorio de Amibas Anfizoicas, Facultad de Estudios Superiores Iztacala (FESI), Medicina, UNAM, Tlalnepantla 54090, México; alol_madole@yahoo.com.mx
- ³ Departamento de Infectómica y Patogénesis Molecular, CINVESTAV-IPN, Ciudad de México 07360, México; bioagam@hotmail.com (L.S.-V.); bchavez@cinvestav.mx (B.C.-M.)
- ⁴ Departamento de Neuropatología, Instituto Nacional de Neurología y Neurocirugía “Manuel Velasco Suárez”, Ciudad de México 14269, México; cisala69@hotmail.com (C.S.-L.); carlos.s.garibay@live.com.mx (C.S.-G.)
- ⁵ Laboratorio de Histología y Patología, FESI, Medicina, UNAM, Tlalnepantla 54090, México
- ⁶ Departamento de Fisiología, Biofísica y Neurociencias, CINVESTAV-IPN, Ciudad de México 07360, México; ceflores@fisio.cinvestav.mx
- ⁷ Centro de Investigación en Ciencias de la Salud, Facultad de Ciencias de la Salud, Universidad Anáhuac, Huixquilucan C.P. 52786, México; anayamtz@yahoo.com.mx
- ⁸ Departamento de Neurociencia, FESI, UNAM, Tlalnepantla 54090, México; nigraizo@unam.mx
- ⁹ Laboratorio de Inmunología, FESI, UNAM, Tlalnepantla 54090, México; renemen@gmail.com
- * Correspondence: maritzaomanam@yahoo.com.mx; Tel.: +52-1-55-6122-6919



Citation: Castelan-Ramírez, I.; Salazar-Villatoro, L.; Chávez-Munguía, B.; Salinas-Lara, C.; Sánchez-Garibay, C.; Flores-Maldonado, C.; Hernández-Martínez, D.; Anaya-Martínez, V.; Ávila-Costa, M.R.; Méndez-Cruz, A.R.; et al. Correction: Castelan-Ramírez et al. Schwann Cell Autophagy and Necrosis as Mechanisms of Cell Death by *Acanthamoeba*. *Pathogens* 2020, 9, 458. *Pathogens* 2024, 13, 852. <https://doi.org/10.3390/pathogens13100852>

Received: 12 September 2024
Accepted: 16 September 2024
Published: 30 September 2024



Copyright: © 2024 by the authors. Licensee MDPI, Basel, Switzerland. This article is an open access article distributed under the terms and conditions of the Creative Commons Attribution (CC BY) license (<https://creativecommons.org/licenses/by/4.0/>).

Error in Figure 5

In the original publication [1], Figure 5c showed an image that was edited to eliminate an electron-dense artifact (precipitate stain generated using the contrast technique in electron microscopy), which in no way modified the essence of what the authors wanted to highlight in the publication. However, the authors now consider it more appropriate to present the image highlighting only the area of interest.

The corrected Figure 5c appears as follows:

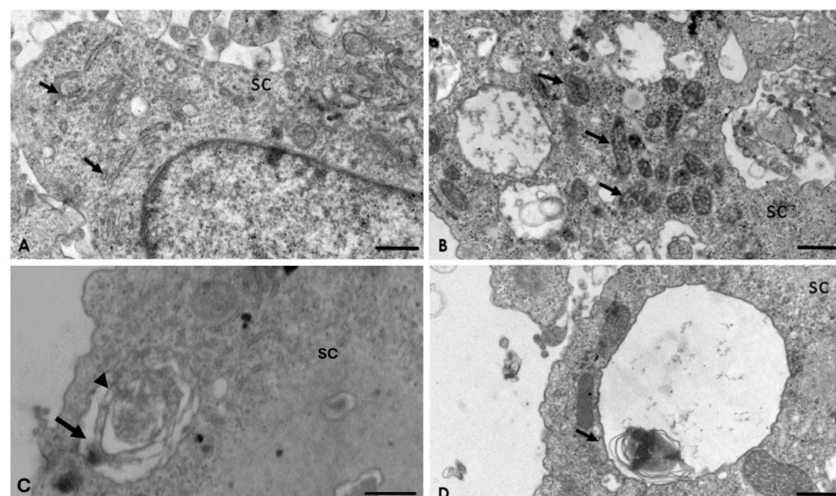


Figure 5. Interaction of *A. culbertsoni* and Schwann cells (SC) after 2 h of interaction. (A,B) Ultrastructural alterations in organelles of SC were frequently observed (arrows) in the rough endoplasmic

reticulum (A) and mitochondria (B) Bars = 2 μm . (C,D) Multilamellar bodies with cytoplasmic material (arrows) persisted. In electron micrograph (C) Bar = 500 nm, a double membrane (arrow head) is evident, characteristic of these structures. Bar = 2 μm .

Addition of Supplementary File

The authors would like to include the following supporting information in the main text, under Section 2.4, “Analysis of the Interaction of *A. culbertsoni* Trophozoites with SC through TEM,” in the third paragraph.

The reference to the supplementary materials should be added to the third paragraph of Section 2.4. The sentence, “Multilamellar bodies with the characteristic double membrane persisted (Figure 5C),” should be revised to, “Multilamellar bodies with the characteristic double membrane persisted (Figure 5C and Supplementary Figure S1).”

In the Supplementary Materials section at the end of the paper, the authors included the following:

Supplementary Materials: The following supporting information can be downloaded at: <https://www.mdpi.com/2076-0817/9/6/458/s1>, Figure S1: Original image corresponding to Figure 5C in which Multilamellar body with cytoplasmic material (arrow) persisted are described.

The Figure S1 appears as follows:

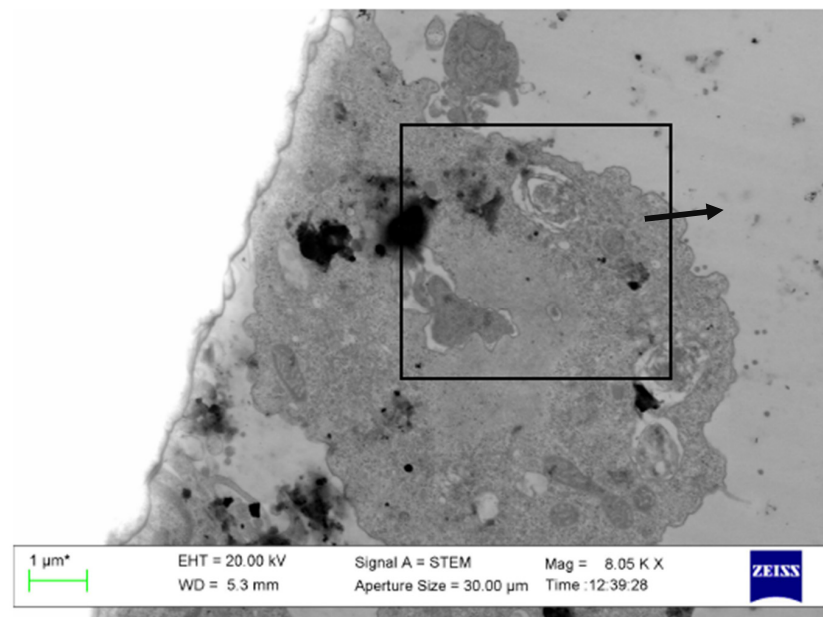


Figure S1. Original image corresponding to Figure 5C in which Multilamellar body with cytoplasmic material (arrow) persisted are described.

The authors state that the scientific conclusions are unaffected. These corrections were approved by the Academic Editor. The original publication has also been updated.

Reference

1. Castelan-Ramírez, I.; Salazar-Villatoro, L.; Chávez-Munguía, B.; Salinas-Lara, C.; Sánchez-Garibay, C.; Flores-Maldonado, C.; Hernández-Martínez, D.; Anaya-Martínez, V.; Ávila-Costa, M.R.; Méndez-Cruz, A.R.; et al. Schwann Cell Autophagy and Necrosis as Mechanisms of Cell Death by *Acanthamoeba*. *Pathogens* **2020**, *9*, 458. [CrossRef] [PubMed]

Disclaimer/Publisher’s Note: The statements, opinions and data contained in all publications are solely those of the individual author(s) and contributor(s) and not of MDPI and/or the editor(s). MDPI and/or the editor(s) disclaim responsibility for any injury to people or property resulting from any ideas, methods, instructions or products referred to in the content.