

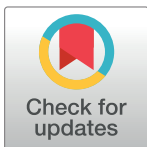
CORRECTION

Correction: Trypsin, Tryptase, and Thrombin Polarize Macrophages towards a Pro-Fibrotic M2a Phenotype

Michael J. V. White, Richard H. Gomer

In [Fig 2](#), the panel labels are missing and the image of Trypsin under panel B is incorrect. Please see the correct [Fig 2](#) here.

In [Fig 6](#), the image of Trypsin under panel C is incorrect. Please see the correct [Fig 6](#) here.



OPEN ACCESS

Citation: White MJV, Gomer RH (2024) Correction: Trypsin, Tryptase, and Thrombin Polarize Macrophages towards a Pro-Fibrotic M2a Phenotype. PLoS ONE 19(11): e0314496. <https://doi.org/10.1371/journal.pone.0314496>

Published: November 20, 2024

Copyright: © 2024 White, Gomer. This is an open access article distributed under the terms of the [Creative Commons Attribution License](#), which permits unrestricted use, distribution, and reproduction in any medium, provided the original author and source are credited.

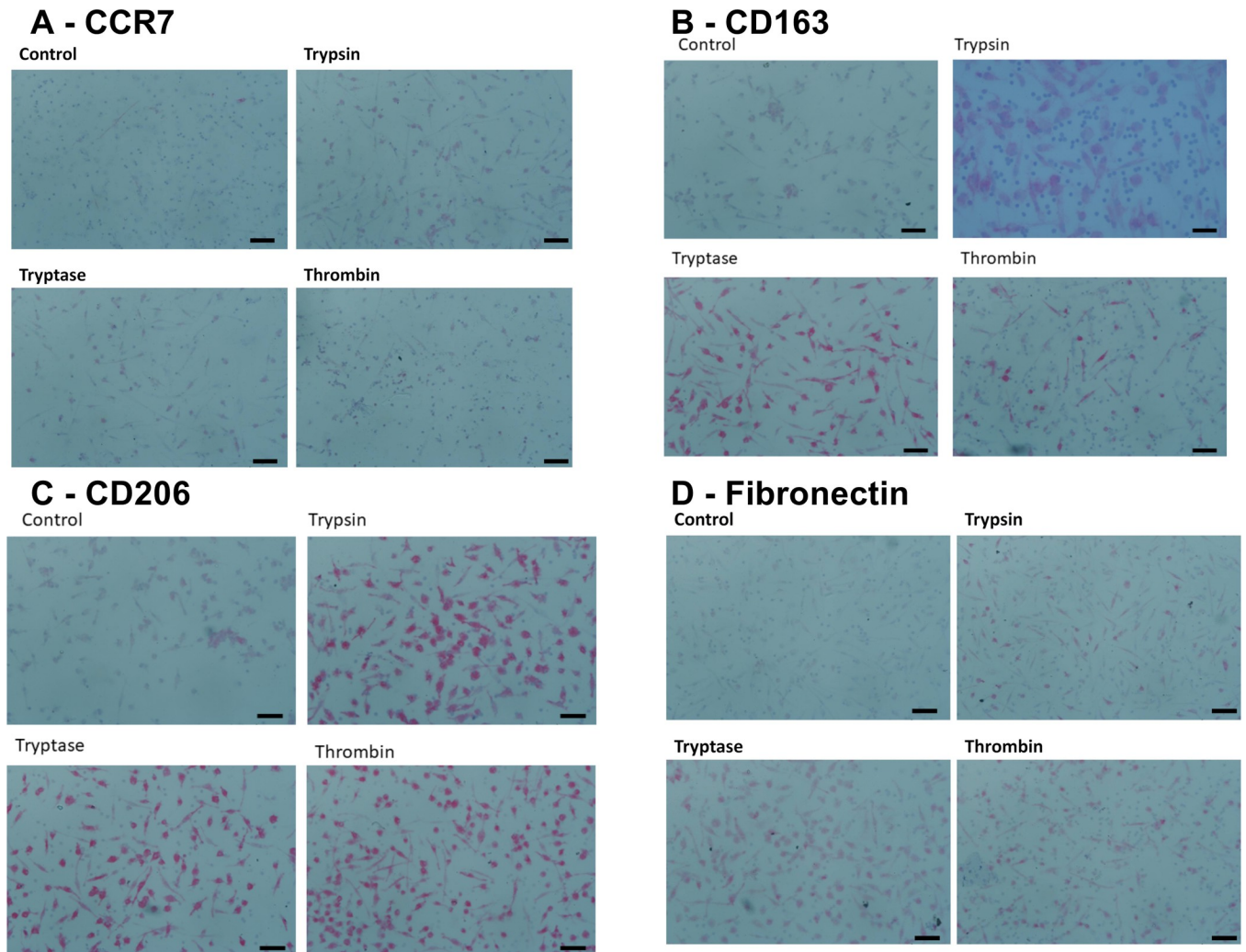


Fig 2. Images of PBMC cultured with proteases. Panels show representative images from slides used for Fig 1, staining for (A) CCR7 (mouse monoclonal clone 150503), (B) CD163 (mouse monoclonal clone GH1/61), (C) CD206 (mouse monoclonal clone 15-2), and (D) fibronectin. Bars are 50 μ m.

<https://doi.org/10.1371/journal.pone.0314496.g001>

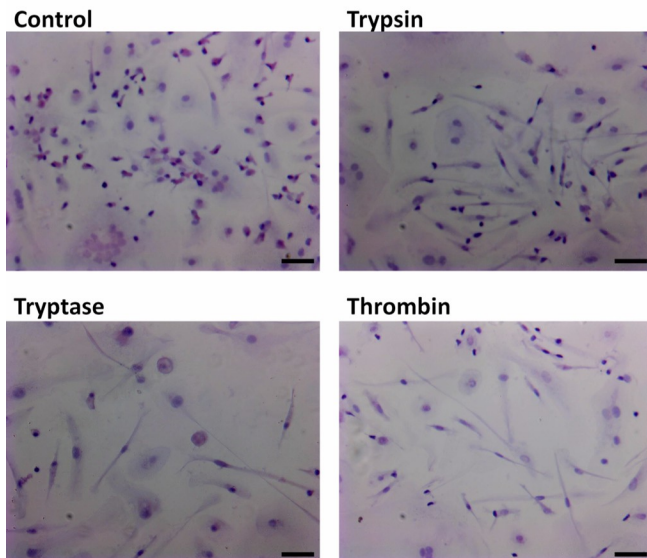
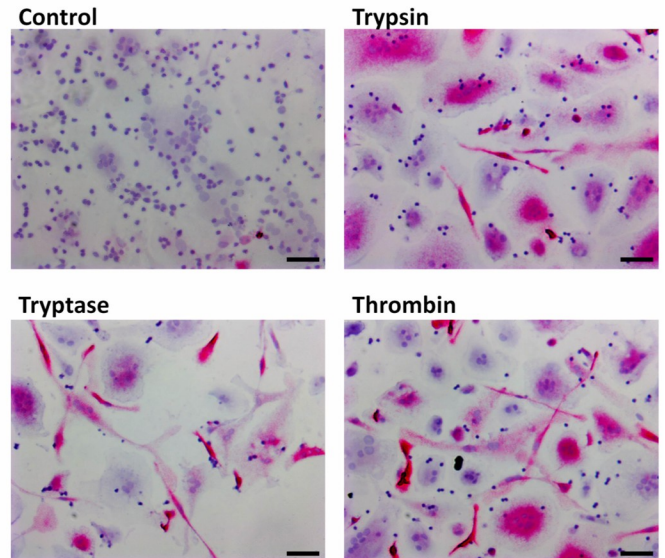
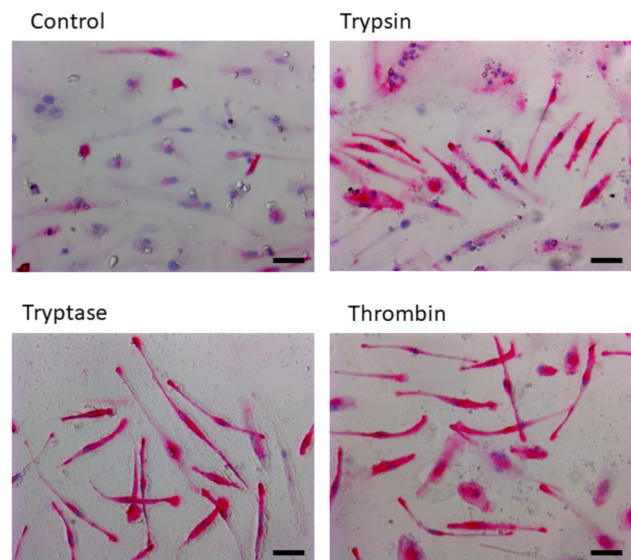
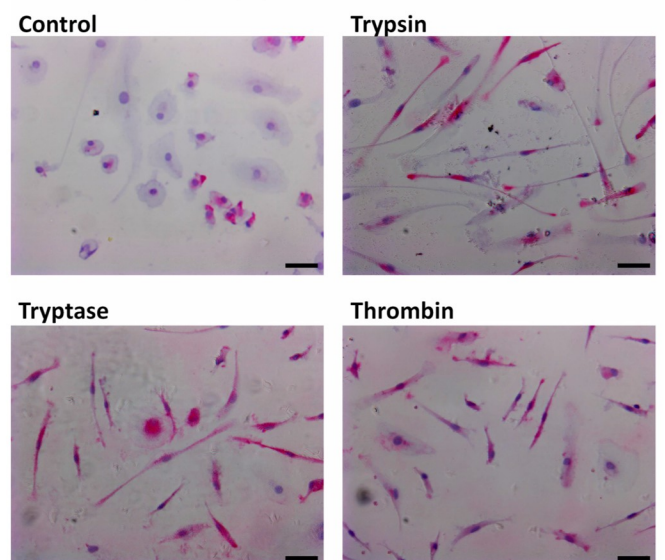
A - CCR7**B - CD163****C - CD206****D - Fibronectin**

Fig 6. Images of cultures containing M2-biased macrophages subsequently cultured with proteases. Panels show representative images from slides used for Fig 5, staining for (A) CCR7 (mouse monoclonal clone 150503), (B) CD163 (mouse monoclonal clone GH1/61), (C) CD206 (mouse monoclonal clone 15-2), and (D) fibronectin. Bars are 50 µm.

<https://doi.org/10.1371/journal.pone.0314496.g002>

Reference

1. White MJV, Gomer RH (2015) Trypsin, Tryptase, and Thrombin Polarize Macrophages towards a Pro-Fibrotic M2a Phenotype. PLOS ONE 10(9): e0138748. <https://doi.org/10.1371/journal.pone.0138748> PMID: 26407067