

## Immunogenic Consideration of a Designed Polypeptide Against Brucellosis Compared to RB51: An *In Vivo* Study

Mina Saadat <sup>1</sup>, Mojgan Bandehpour <sup>1,2\*</sup>, Bahram Kazemi <sup>2</sup> and Nariman Mosaffa <sup>3</sup>

1. Department of Medical Biotechnology, School of Advanced Technologies in Medicine, Shahid Beheshti University of Medical Sciences, Tehran, Iran

2. Cellular and Molecular Biology Research Center, Shahid Beheshti University of Medical Sciences, Tehran, Iran

3. Department of Immunology, School of Medicine, Shahid Beheshti University of Medical Sciences, Tehran, Iran

### Abstract

**Background:** Brucellosis in livestock and its transmission to humans through the consumption of contaminated dairy products is an important issue. The introduction of new approaches using immunogenic proteins against and diagnosing brucellosis is a serious issue in human health.

**Methods:** *Brucella abortus* contains five proteins including: MOXR family ATPase- $\alpha$ 2, T9SS C-terminal target domain-containing protein, Cobyric acid synthase, Hypothetical protein, and VirB11 type IV Secretion protein, which were considered and the designed recombinant polypeptide was produced and evaluated. The pure recombinant protein ABOR with 549aa in combination with chitin as an adjuvant was injected subcutaneously into guinea pigs to evaluate their immunity responses.

**Results:** The results indicated that the ABOR recombinant protein induced Th1 immunity with high levels of specific IgG (IgG2a) as well as Interferon- $\gamma$  (IFN- $\gamma$ ), Interleukin-2 (IL-2), IL-12, and Tumor Necrosis Factor-alpha (TNF- $\alpha$ ), compared to the control group. Th1/Th2 ratio analysis demonstrated the efficacy of ABOR protein combined with chitin in stimulating cellular immunity in the animals.

**Conclusion:** Designed recombinant polypeptide combined with chitin showed ability for induction of cellular and humoral immunity in guinea pigs compared to RB51 vaccine.

**Keywords:** *Brucella abortus*, Guinea pigs, Immunity, Recombinant proteins

**To cite this article:** Saadat M, Bandehpour M, Kazemi B, Mosaffa N. Immunogenic Consideration of a Designed Polypeptide Against Brucellosis Compared to RB51: An *In Vivo* Study. Avicenna J Med Biotech 2024;16(4):251-259.

\* Corresponding author:  
Mojgan Bandehpour, Ph.D.,  
Department of Medical  
Biotechnology, School of  
Advanced Technologies in  
Medicine, Shahid Beheshti  
University of Medical Sciences,  
Tehran, Iran  
Cellular and Molecular Biology  
Research Center, Shahid Beheshti  
University of Medical Sciences,  
Tehran, Iran  
Tel: +98 21 8866139  
E-mail:  
m.Bandehpour@sbmu.ac.ir,  
Bandehpour@gmail.com  
Received: 11 Mar 2024  
Accepted: 20 Jul 2024

### Introduction

*Brucella* species are facultative intracellular gram-negative bacteria categorized in the R-2 subgroup of the class proteobacteria, whose nomenclature is based on their pathogenicity and the reaction of the host immunity system <sup>1</sup>. Brucellosis is a major worldwide zoonotic disease, causing infection in a broad spectrum of mammals, including humans. The annual incidence rate of brucellosis is about half a million people worldwide <sup>2</sup>. Although cattle is the preferential host for *Brucella abortus* (*B. abortus*), it is one of the most infectious species of *Brucella* for humans <sup>3</sup>. The subsequent distinct selection and characterization of the seroreactivity to different proteins of *Brucella* could lead to an acceptable diagnostic test and a subunit protein for prophylactic approaches. The characterization and identification of *B. abortus*-specific proteins reacting with circulating antibodies in naturally preferred infected

cattle was performed in a previous study <sup>4</sup>. This pathogen produces various virulent factors that modify phagocytic capacity, antigen presentation, cellular maturation, cytokine secretion, and apoptosis. Modulation of innate immune mechanisms by *Brucella* leads to the depression of T-cell immunity in chronic brucellosis patients <sup>5</sup>.

Cytokines are the important biomarkers in immune system stimulation. The macrophages present *Brucella* antigenic structures to lymphocytes and produce Tumor Necrosis Factor-alpha (TNF- $\alpha$ ) and Interleukin12 (IL-12). This modification enhances bactericidal activity of macrophages and causes differentiation of T helper cells to type 1 (Th1) leading to the control of the *Brucella* infection <sup>6</sup>.

Vaccination of animals, especially in endemic areas, is the most economical and efficient way to control

brucellosis, and minimizing potential human infections<sup>7</sup>. Developing an effective preventive polypeptide for brucellosis has challenged scientists for many years. Only a few vaccines are commonly used to immunize cattle against *B. abortus*, including S19, RB51, 45/20, and SR82, with S19 and RB51 being the most widely used<sup>8</sup>. Although the available vaccines effectively control brucellosis, they have numerous drawbacks, such as interfering with diagnostic tests, pathogenicity for humans, and the potential to cause abortion in pregnant animals, among others<sup>9</sup> virulent recurrence risk, secretion into milk and antibiotic resistance. Also, there are limitations to the immunization efficacy of RB51 depending on the challenge, with no absolute protection achieved with this vaccine<sup>10</sup>. For these reasons, there is an urgent need for the development of an effective and safe subunit vaccine(s) for brucellosis.

Studies over the last decade have shown that multi-component vaccines (multi epitopes protein) induce more efficient responses than a single component subunit vaccine<sup>10</sup>. Therefore, a more efficient immune response against *Brucella* infection could be achieved using a chimeric protein that includes several epitopes from different *Brucella* antigens.

Screening and evaluation of the bacterial antigens are the most important fundamental tasks in the development of subunit vaccines. While many proteins have been assessed as potential protective antigens against the *Brucella* infection, only a few have been shown to induce significant protection<sup>11</sup>. The step one evaluation for degree of vaccine protection efficiency depends on the ability of the candidate antigens to direct immunity towards a Th1-type response<sup>12</sup>. Also, to evaluate the selected antigen, a mixture of it and adjuvant, and delivery vehicle/vector is needed to trigger a strong immune response. For the development of an effective vaccine against intracellular pathogen such as *Brucella*, the production of Th1- derived cytokines [Interferon- $\gamma$  (IFN- $\gamma$ ), Interleukin-12 (IL-12), Tumor Necrosis Factor-alpha (TNF- $\alpha$ )] as well as the activation of macrophages, dendritic cells, and CD4+ and CD8+T cells are the key factors; whereas Th2 immune responses, which are stimulated by the humoral immune system, have a less importance in the response to infection<sup>13</sup>. In this study, the designed recombinant multi-epitope antigen named ABOR was expressed in *Escherichia coli* (*E. coli*) BL21 (DE3) and purified<sup>4</sup>. It was then evaluated in combination with chitin as an confirmed adjuvant with several specific immunity system assays in guinea pigs as proper animal for veterinary vaccine investigations.

## Materials and Methods

### Preparation of ABOR polypeptide

As in the previous study<sup>4</sup> after identifying the bacterial determinant proteins, the ABOR polypeptide with 549aa was constructed with the epitopes from 5 selected proteins joined with GS linkers. The ABOR

recombinant protein was expressed by synthesizing the protein-coding sequence with restriction enzyme sites (1710 bp) into the pET22b (5493 bp) expression vector (GeneCust, Luxembourg S.A.).

First, as the host cell, *E. coli* BL21 (DE3) was transformed with pET22b plasmid to express the recombinant multi-epitope protein. The prepared bacterial pellet containing recombinant ABOR protein was prepared and purified exactly similar to the earlier published method<sup>4</sup>. Afterward, the purified ABOR polypeptide and the controls were lyophilized at -40 °C, complete vacuum for three hr.

### Preparation of chitin microparticles as candidate adjuvant

To prepare the chitin microparticles in distilled water, a suspension of the pure chitin powder (C-7170, Sigma) was first sonicated and sequentially filtered using a 40- $\mu$ m filter (Cell Strainer, BD Falcon, Mexico). Next, the chitin microparticles (<40  $\mu$ m) were obtained by centrifugation at 2800 $\times$ g for 10 min, drying at 40°C, and suspension in distilled water (100  $\mu$ g/100  $\mu$ l), then autoclaved and stored at 4°C before use. Then, particle size and size distribution were analyzed using a laser particle size analyzer (Malvern Master Sizer, Malvern Instruments, Ltd., Worcestershire, UK).

Lastly, the micro-particle and ABOR protein suspension were checked for the presence of endotoxin using a Limulus Amebocyte Lysate (LAL) kit (Cambrex). A 10-fold dilution series of the sample was prepared and equal volumes of the Limulus lysate were added to them. The test tubes were then incubated before being inverted and read. The mixtures remained unchanged and showed the sample did not contain Lipopolysaccharides (LPSs). It means all dilutions prepared from the protein ABOR compared to the kit positive control did not coagulate.

### Analysis of the immunogenicity of the complex (ABOR+chitin)

The immune complex endotoxin negative formula contained 10 mg of ABOR protein and 50  $\mu$ g chitin microparticles as an adjuvant for the first group. The other four groups were injected with 200  $\mu$ L of Phosphate-Buffered Saline (PBS), 200  $\mu$ l of RB51 vaccine (Lot number 2639, Colorado Serum Company), 50  $\mu$ g chitin, and 10 mg recombinant protein, respectively.

### Immunization of *Cavia porcellus* with ABOR protein

Fifteen 5-weeks-old *Cavia porcellus* (guinea pigs) weighing 300 $\pm$ 20 g were purchased from the Pasteur Institute (Karaj, Iran) and divided into five groups: PBS, RB51 vaccine, ABOR protein, ABOR protein+chitin, and chitin groups. Subcutaneous injection of 200  $\mu$ l of injection formula was made into the back of the guinea pigs at three intervals of 10 days.

### Sample collection and culture of lymphocytes

Blood samples of each experimental group were collected from a cardiac puncture before sacrificing the animals. The spleen of each animal was first dissected; next, the splenocytes were isolated by Ficoll 1074

(Sigma) and then cultured in RPMI1640 (Biosera) (with 100 *u*/mL penicillin and 100  $\mu$ g/mL streptomycin) at 37°C, 5% CO<sub>2</sub>, and 80% humidity in 5x10<sup>6</sup> cells for later immunological assay. All immunological tests were performed in triplicate. Additionally, liver tissue was removed and kept in formalin 10% until slide staining for the examination of any pathological changes following the use of the candidate immunogenic complex formula.

#### Assessment of the ABOR polypeptide specific IgG in sera of immunized guinea pigs by ELISA

The Enzyme-Linked Immune Sorbent Assay (ELISA) analysis was used to evaluate the immunogenicity of the injected polytope protein. Different concentrations of purified protein in 1xPBS were prepared and coated as described previously to set up the test. Briefly, the plate was first washed three times and blocked with blocking buffer after 1 *hr* at room temperature. Then, the plate was washed three more times, and 100  $\mu$ l of diluted (1/500 and 1/200) serum samples previously prepared using 1xPBS was added to each well. The plate was left at room temperature for 2.5 *hr*. It was again washed three times, and 100  $\mu$ l of HRP-conjugated anti-guinea pig IgG (1:10000 dilutions in 1xPBS) was added to each well and left at room temperature for 1 *hr*. After re-washing the plate, 100  $\mu$ l of 3,3',5,5'-Tetramethylbenzidine (TMB) substrate (Sigma) was added and placed at room temperature for 15 *min*. After which, the reaction was stopped using 50  $\mu$ l of 2N H<sub>2</sub>SO<sub>4</sub>. The Optical Density (OD) of each well was measured by an ELISA reader (TECAN, Denmark) at a wavelength of 450 *nm* with a reference wavelength of 630 *nm*. All of the 25 anti-*Brucella* IgG negative serum samples were measured to set a cutoff value using the mean $\pm$ 2SD.

#### Detection of the ABOR polypeptide specific IgG in infected cattle's sera by ELISA

The ELISA method was used to investigate the binding of specific antibodies in cow's serum with brucellosis to ABOR recombinant protein because the selection of epitopes was from different proteins of the structural and secretory proteins of *B. abortus*. The method was performed as mentioned above; this time with cattle's sera in a 1:1000 dilution. Healthy cow's serum was used to determine the cutoff value using the mean $\pm$ 2SD.

#### Expression assay of IL-2, IL-4, IL-5, IL-10, IL-12, TNF- $\alpha$ , and IFN- $\gamma$ cytokine genes by Real-time RT-PCR

Total RNA was extracted from blood preserved with RNAlater solution using a Gene All Hybrid-R RNA Purification Kit (Seoul, South Korea) according to the manufacturer's guidelines. First, the RNA was then treated with 5 *U* of amplification grade DNase I (Fermentas, Lithuania) according to the manufacturer's specifications to remove any contaminating genomic DNA. Then, RNAs were quantified by measuring their optical density at 260 *nm* (OD260) using a Nanodrop-

1000 spectrophotometer (Thermo Scientific), and the purity was assessed by determining the OD260/OD280 ratio, which was between 1.9 and 2. To synthesize cDNA, 2  $\mu$ l of oligo (dT) primer and 2  $\mu$ l of 2.5 *mM* stock of dNTPs (Fermentas, Lithuania) were mixed and added to 5  $\mu$ l of DNase-treated RNA in DEPC-treated water, 4  $\mu$ l of 5xM-MuLV buffer (Fermentas), and 1  $\mu$ l of 5 *IU*/ $\mu$ l M-MuLV (Fermentas, Lithuania). The solution was incubated at 42°C for 1 *hr*. Next, the M-MuLV reverse transcriptase enzyme was heat-inactivated for 5 *min* at 72°C. Primers for all target sequences were designed using publicly available databases (GenBank) (Table 1). Then, a real-time PCR was performed with DNA Master SYBR Green I mix (Roche Applied Sciences, Mannheim, Germany) using 1  $\mu$ l of the cDNA in a volume of 20  $\mu$ l with the specific primers mix. After, a quantitative PCR was performed in the Step One TM instrument (Applied Biosystems) for 45 cycles with the following parameters: denaturation at 95°C for 15 *s*, annealing at 60°C for 10 *s*, and extension at 72°C for 15 *s*. Finally, the cytokines gene amplification was visualized by agarose gel electrophoresis. To calculate the relative fold cytokine genes expression, the 2<sup>- $\Delta\Delta$ Ct</sup> method was used in comparison with the control group.

#### The lymphocytes proliferation assay by Flow cytometer

The proliferation of the five examined groups was performed by adding the antigens separately 24 *hr* after cell culture. Following six days of culture at 37°C in a 5% CO<sub>2</sub> humidified incubator, the cells were harvested, and the proliferation rate was assessed by measuring Carboxyfluorescein Succinimidyl Ester (CFSE) uptake. After the CFSE-labeled (Life Technologies, USA) cells divide, their progeny will have half the number of labeled molecules. Each cell division was assessed flow cytometrically by measuring the corresponding decrease in cell fluorescence. In parallel, unstimulated lymphocytes were considered the negative control under the same culture conditions.

A stock solution of CFSE was prepared by dissolving CFSE (Molecular Probes, Eugene, OR, USA) in DMSO at a concentration of 5 *mmol*/*L*. In the labeling process, 1 *ml* cell suspension was added to the bottom

Table 1. The primers used in cytokine genes expression level assay by Real-Time RT-PCR

Gene	Forward (5'-3')	Reverse (5'-3')
<i>IL-4</i>	tgacggctcattctctctgcctc	aggagagtgtgttgaggctgtg
<i>IL-12</i>	acctccctagggacctcaccag	ggccttgtgaagtctactgttc
<i>IL-5</i>	ggaagctctggcaactattc	tgcttactctccgtctgctcc
<i>IL-10</i>	gccagccaaggcacgaacacc	acctgccaaggcagctcgg
<i>TNF-<math>\alpha</math></i>	tgcactttgggtgatcgcc	agccaccggctgtcattatcg
<i>IFN-<math>\gamma</math></i>	atgttgctctcattctg	catctgagttatctgattc
<i>IL-2</i>	gttatgctttctcagcaaccc	gctaatttagcacctctccac
<i>GAPDH</i>	gtagccatcaatgatccct	aaggctgagaatggaagct

IL: Interleukin, TNF: Tumor Necrosis Factor, IFN: Interferon.

of the falcon tube. Then, 1:10 PBS diluted CFSE stock solution was added at the transverse tube position, and the tube was rapidly turned and vortexed to ensure homogeneous dispersal. After labeling, the cells were incubated for 5 min in the dark at 20°C, after which 10×volume of RPMI was added and centrifuged again at 300 g for 5 min at 20°C. Next, the cells were washed three times, and 1 ml RPMI was added. Labeled cells were placed directly in culture media and incubated at 37°C in a 5% CO<sub>2</sub> incubator for 72 hr in a 96-well plate to stimulate them to divide.

**Toxicity evaluation of the ABOR protein**

As a sensitive organ to the toxins, liver samples of guinea pigs were prepared with paraffin and then were cut for histological evaluation of ABOR protein on hepatic tissue. After Hematoxylin and Eosin staining, samples were studied.

**Statistical analysis**

All experiments were done in triplicate. Values were expressed as means±SD. Statistical analyses were performed by one-way analysis of variance (ANOVA) followed by Turkey’s multiple comparisons tests. p values less than 0.05 were considered to be statistically significant. REST@ 2009 Software (Qiagen, Hilden, Germany) was used to analyze RT-qPCR data.

**Results**

Following previous study <sup>4</sup>, a polypeptide extracted from antigenic epitopes of five proteins, MOXR family ATPase-α2, T9SS C-terminal Target domain-containing protein, Cobyric acid synthase, Hypothetical protein, and VirB11 type IV Secretion protein, was expressed in *E. coli* BL21. The designed poly-tope protein was called ABOR with 549aa, 47679.30 Da MW, and pI 5.23, with alanine (17% distribution) as the most abundant amino acid in the protein sequence. The confirmation steps were demonstrated below:

**Confirmation of the ABOR recombinant protein production**

In the previous study <sup>4</sup>, western blot analysis of the protein expression revealed by His-tag antibody and infected cattle's serum showed that the ABOR protein with 549aa, 47679.30 Da MW, and pI 5.23 was successfully expressed after induction, and there were specific antibodies for their epitopes in the infected animal serum (results are available in the supplementary data).

**Chitin micro-particles size analysis**

In this study, chitin was used as an adjuvant. A laser particle analyzer determined the chitin microparticle size and size distribution. The particle size evaluation showed that 90% of the chitin microparticles in the suspension were less than 64.5 μ in size, 50% were less than 23.6 μ, and 10% were smaller than 6.01 μm (Figure 1).

**Specific antibody to ABOR protein analysis in guinea pigs' sera**

Figure 2 showed that the guinea pigs immunized with ABOR protein+chitin or RB51 vaccine produced

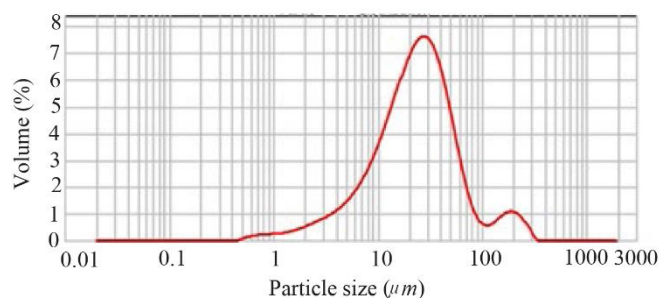


Figure 1. Chitin microparticles size analyzing. More than 80% of the obtained microparticles were determined below 40 μm.

significantly higher *IgG2a* levels compared to the PBS control group.

The levels of *IgG* specific for recombinant ABOR protein in the group injected with ABOR+Chitin and whole *B.abortus* antigen (RB51) were determined by ELISA, with a mean absorbance values (A) at a wavelength of 450 nm of 2.051±0.217 and 1.864±0.115, respectively. The difference was not significant between immunized guinea pigs. In contrast, in the two groups of animals injected with ABOR+Chitin and RB51, the levels of *IgG*-specific increased significantly above those measured in the guinea pigs injected with PBS by a mean absorbance values (A) at a wavelength of 450 nm of 0.217±0.026 (p<0.0001). These results suggest that recombinant *B. abortus* protein (ABOR) combined with chitin is capable of responding similarly to the *B.abortus* vaccine in guinea pigs (Figure 2).

**Identification of the interaction between the Cattle serum specific IgG and ABOR protein**

The serums of healthy and infected cattle were gathered, and the amount of the produced *IgG* was determined by a manual ABOR protein-coated ELISA procedure. The results (Figure 3) show that *IgG* levels against ABOR recombinant protein were significantly

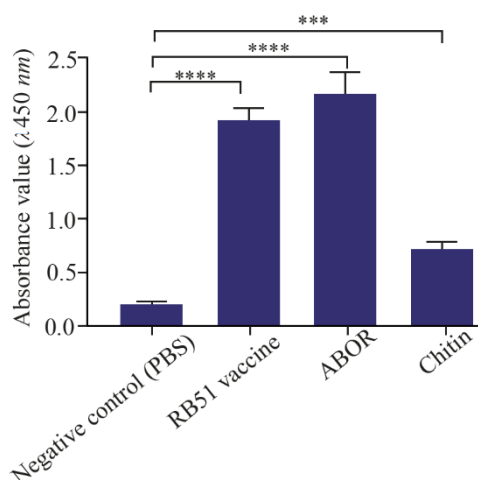


Figure 2. Specific *IgG2a* level in the serum of immunized guinea pigs. The comparison between specific immunizations of the animals injected with ABOR and Chitin, RB51 vaccine, and PBS.



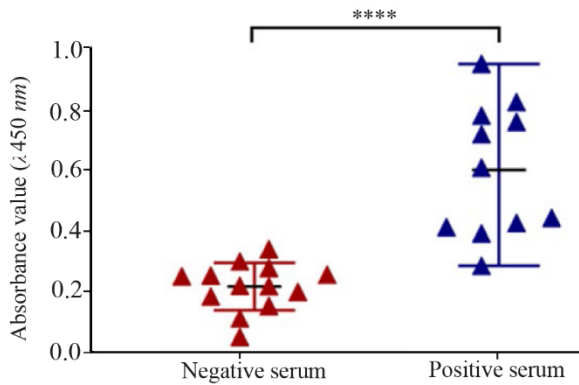


Figure 3. Specific total IgG levels measured by ELISA. Control (negative) serum and serum of cattle with brucellosis (positive) in interaction with ABOR protein.

higher in positive sera with a mean absorbance values (A) at a wavelength of 450 nm of  $0.601 \pm 0.218$  compared to negative sera with a mean absorbance values (A) at a wavelength of 450 nm of  $0.218 \pm 0.078$  ( $p < 0.0001$ ).

**Comparison of cytokines genes expression levels**

As shown in figure 4, real-time RT-PCR analysis of immunized guinea pigs' spleen lymphocytes from the five guinea pigs groups receiving different immunization showed that expression levels of TNF $\alpha$ , IL-2, IL-12, and INF- $\gamma$  significantly increased in guinea pigs immunized with ABOR protein+Chitin ( $p < 0.05$ ). In particular, an increase in the expression level of IL-12 and INF- $\gamma$  in guinea pigs immunized by ABOR protein+Chitin was observed compared with guinea pigs immunized by RB51 ( $p < 0.05$ ). Moreover, a decrease in IL-10, IL-5, and IL-4 was also observed in this group compared to the controls (RB51, Chitin, and PBS,  $p < 0.05$ ).

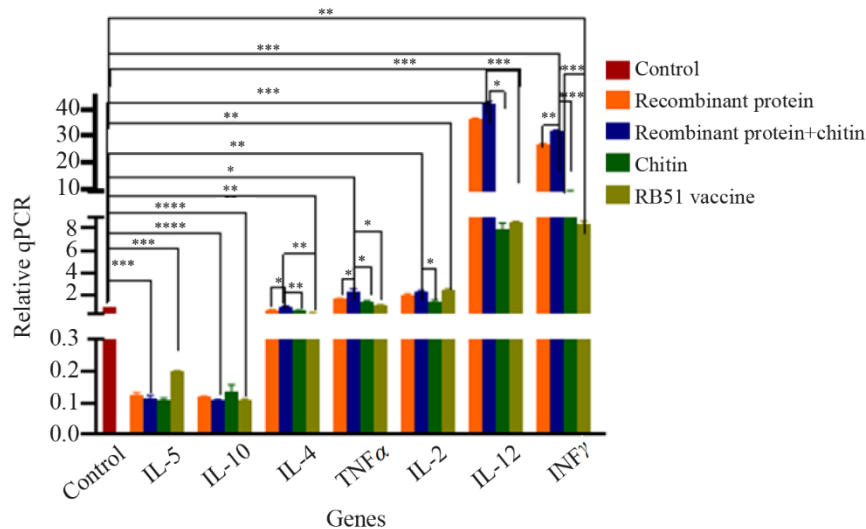


Figure 4. Expression levels of cytokine genes. Cytokine mRNA transcriptions levels after injection of ABOR recombinant protein and chitin, RB51 vaccine, Recombinant protein, Chitin, and PBS (control) were compared. ( $p < 0.05$ ). The  $2^{-\Delta\Delta Ct}$  method was used. A higher IFN-gamma: IL-4 ratio ( $p = 0.04$ ) was found in ABOR protein+chitin group compared to controls. This group also displayed higher mRNA levels of IL-12 ( $p = 0.03$ ), but not IL-4 and IL-10. IFN-gamma expression in ABOR protein+chitin group, but not controls, correlated strongly with IL-12 level.

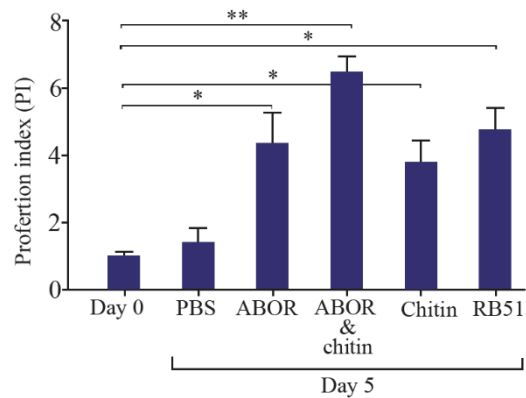


Figure 5. Comparison of Proliferation Index (PI) in guinea pigs' spleen cells treated with RB51, ABOR+Chitin, ABOR protein, Chitin, and PBS groups on days 0 (before treatment), and the calculated PI [OD of test sample-OD of negative control/OD of negative control].

**The proliferation of Lymphocytes assay**

Lymphocytes stimulation was assayed using flow cytometry to determine whether recombinant *B. abortus* ABOR protein elicited antibody responses in guinea pigs. The SI values of guinea pigs' spleen cells treated with *B. abortus* vaccine (RB51), recombinant protein (ABOR)+chitin, and PBS were identified on days 0 and 5 (Figure 5).

The Proliferation Index (PI) expressed the average OD value in the test group divided by the average OD value in the negative controls. As shown in figure 5, the mean values of the stimulation index in ABOR+chitin and RB51 groups were significantly higher than the PBS group on day 5 ( $p = 0.0033$  &  $0.0021$ ). Positive controls in the stimulation with RB51 showed the normal condition of cells in the culture. However, the ABOR+chitin group displayed a significantly different

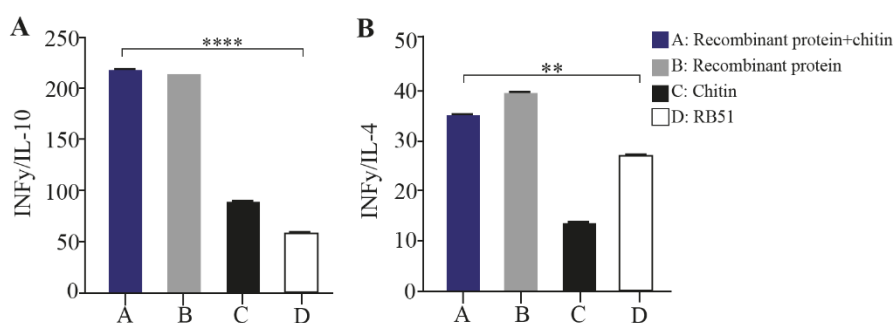


Figure 6. The ratio of the expressed cytokines in different experimental groups. The ratio of IFN- $\gamma$  to IL-10(I), and IL-4(II) after immunization of guinea pigs.

A: ABOR protein and Chitin. B: ABOR protein. C: Chitin. D: RB51 vaccine.

SI mean value ( $p=0.0235$ ) compared to the RB51 control group.

In addition, the ratio of the IFN- $\gamma$  to IL-10, and IL-4 mRNA expression levels (Figure 6) showed the ABOR protein in complex with chitin was able to stimulate the production of IFN- $\gamma$ , the key cytokine of cellular immunity that is produced by Th1 cells.

All desired ratios in each group were compared with other groups. In group ABOR protein+chitin, this ratio was significantly higher than the rest of the groups specially RB1. These results indicate the effective stimulation of gamma interferon production in group ABOR protein+chitin. In figure 6 the ratio between IFN $\gamma$  and IL-10 in two sides of immunity is momentous in humoral and cellular stimulation after antigen injection. As well as these assays must be carried out in cattle exactly.

#### Microscopic evaluation

Histopathological evaluation revealed that mild portal and/or parenchymal hepatitis (mononuclear and polymorphonuclear cells), vacuolar degeneration, cell swelling, and individual necrotic cells were seen in all experimented groups, which were not related to treatment by the ABOR protein (Figure 7). Any necrosis or noticeable degeneration changes in hepatocytes were not observed.

#### Discussion

Brucellosis is a zoonotic infection with a destructive economic effect on the livestock and public health in different regions<sup>13</sup>. Therefore, vaccination of animals, especially in *Brucella* endemic countries, is the most efficient way to control brucellosis. This would also decrease the potential for severe human infections. However, live attenuated vaccine types, such as *B. abortus* RB51, are only partially effective in controlling animal brucellosis<sup>14</sup>, and their disadvantages include abortion in some vaccinated pregnant animals, conflict with the diagnosis of vaccinated animals from an infected animal, resistance to antibiotics, and infection in humans<sup>15</sup>. Therefore, there is a great need to

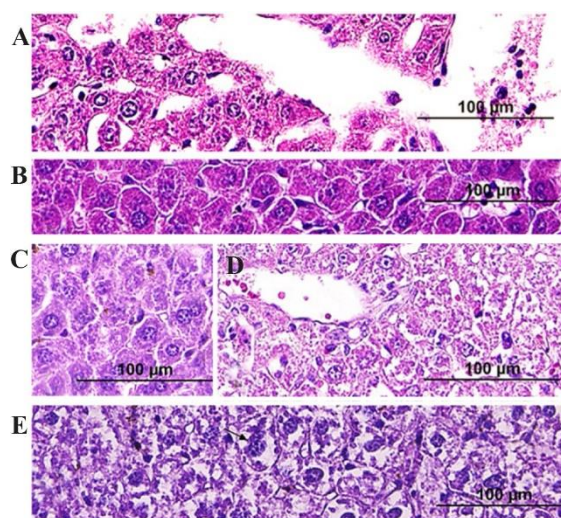


Figure 7. Histopathological evaluation of hepatic tissues belong to groups A to E after injections showed no toxic effects: A) PBS, B) ABOR protein+chitin, C) RB51 Vaccine, D) Chitin, and E) ABOR protein (H& E, Bar= 100  $\mu$ m).

develop a safer, and more effective vaccine against *Brucella* species. So, among vaccine types, subunit vaccines need to be introduced and developed to overcome these problems.

According to other studies, the Omp and ribosomal recombinant proteins from *Brucella* have been produced and shown to create efficient immunity in the mouse model<sup>16</sup>. Furthermore, several studies showed that chimeric recombinant proteins could create a multilateral impact and increase the protective effect of each specific antigen<sup>17</sup>. Therefore, it is believed that a multi-tope immunogenic protein containing immunodominant epitopes from several specific proteins may exert sufficient immunity against *Brucella* species.

One of the most important drawbacks associated with epitope-based vaccines is their low immunogenicity. To overcome this drawback, adjuvants are added to multi-epitope vaccines to improve the immunogenic constructs and modulate them toward the desired im-

immune responses<sup>18</sup>. Chitin is a potent activator of the innate immune response in macrophages<sup>19</sup>. It can also elicit a type 2 immune response and augment the Th1, Th2, and humoral responses<sup>20</sup>. In this study the particle size evaluation of the prepared chitins showed that 90% of the microparticles in the suspension were less than 64.5  $\mu$  in size, 50% were less than 23.6  $\mu$ , and 10% were smaller than 6.01  $\mu$ m.

Phagocytosable small-sized chitin particles activated alveolar macrophages to express cytokines, such as IL-12, TNF- $\alpha$ , and IL-18, leading to INF- $\gamma$  production mainly by *Natural Killer* (NK) cells<sup>21</sup>. Pro-inflammatory cytokines produced at the onset of infection, such as TNF- $\alpha$ , and IL-12, have been shown to play a central role in the clearance of the bacterial organism in mice<sup>22</sup>. So using the chitin nanoparticles in size of below than 64  $\mu$  as adjuvant was an idea in the present research. However, significant influence in INF- $\gamma$ , IL-12, and IL-4 production results after injection of ABOR protein with chitin in comparison to ABOR protein without chitin was not observed.

The Th1 cytokine, INF- $\gamma$ , plays an important role in activating macrophages and limiting *Brucella* infections both *in vitro* and *in vivo*<sup>23</sup>. However, the Th1 and Th2 cells are important regulators of the class of immune response. The role of the T-helper cells in amplifying immune responsiveness seems to be that Th1 cells are reliant on INF- $\gamma$  and, to a lesser extent, IL-2 and IL-12. Th2 cells are heavily reliant on IL-4 and IL-5 as well<sup>24</sup>.

As a common control, the RB51 conventional vaccine. *B. abortus* RB51- an attenuated rough strain- was currently used as the vaccine of choice against bovine brucellosis in many countries<sup>25</sup>. In this study, the mRNA expression levels of Th1 cytokines (INF- $\gamma$  and IL-2) increased in guinea pigs immunized with the ABOR protein in formulation with chitin. In addition, increased levels of TNF- $\alpha$  and IL-12 cytokines was observed. Polyepitope named ABOR protein successfully stimulated the cellular immunity system, as confirmed by the significant higher Th1/Th2 ratio compared with the control groups.

Other studies have demonstrated that the RB51 vaccine induces a strong Th1 cellular immune response with the production of INF- $\gamma$  and CD8+ specific cytotoxic cells in mice<sup>26</sup>. The results of cytokine expression in guinea pigs immunized with the RB51 vaccine confirmed those results. Moreover, the Th1/Th2 ratio analysis data in the ABOR and ABOR and chitin groups demonstrated the efficacy of the protein in cellular immunity stimulation was significantly powerful. The results of cytokine genes expression showed that the ABOR protein in complex with chitin significantly induces INF- $\gamma$  and IL-12 production compared with the RB51 vaccine ( $p < 0.05$ ).

An increased IL-10 mRNA expression level resulting from the repression of a protective Th1 response was observed in brucellosis, which supports the capaci-

ty of *Brucella* to avoid immune surveillance. In this study, the IL-10 expression level in guinea pigs immunized with ABOR protein and chitin decreased significantly ( $p < 0.05$ ). These findings are in agreement with Fu *et al* recombinant vaccine design research<sup>27</sup>. Also, IL-4 is the typical priming cytokine, that drives the differentiation of naive T cells to Th2 pathway of immune activation. Th2 immunity ensures immunity against extracellular pathogenic micro-organisms and main cells in the Th2 immunity are B cells, eosinophils and basophils. If the immunity is strongly biased to Th2 answer, a lot of IL-4 and IL-10, also IL-5 is produced and this can lead to allergic IgE mediated reaction or autoimmunity mediated by specific autoreactive antibodies<sup>24</sup>. These cells further produce IL-4 and this way the Th2 immune pathway is enhanced. At the same time, IL-4 functions as the main contra regulatory cytokine that inhibits the shifting of immune response towards Th1 immunity. Therefore, IL-4 and IFN-gamma are contra regulatory cytokines. IFN-gamma is typical Th1 cytokine and IL-4 is typical Th2 cytokine. So, from the obtained ratios Th1 pathway is more enhanced as expected. As well as the results of IFN-gamma:IL-4 and IFN-gamma:IL-10 ratios show that Th1 cells produce a determined amount of INF- $\gamma$  that ensures the Th1 shifted immune pathway and at the same time function as the strongest contra regulatory cytokine against Th2 immunity, whereas, it prevents the development of Th2 immunity.

In the present research the opsonization pathway that is the most important protective role of antibodies in brucellosis was considered. Furthermore, a high concentration of IgG during infection of cattle appears to prevent complement-mediated extracellular bacterial lysis and promotes phagocytosis of *Brucella*, enhancing the extension of the disease<sup>28</sup>. On the other hand, cell-mediated immunity plays a key role in a host's defence against *B. abortus*, involving mainly activated antigen-presenting cells and CD4+, CD8+ T lymphocytes<sup>29,30</sup>.

Therefore, a multiepitope protein designed from several antigenic substances of the pathogen as a vaccine candidate and production of it by prokaryotic expression system was carried out. The guinea pig was selected as a proper laboratory animal for veterinary vaccinology study. Epitope-based polypeptides represent a new type of vaccine that specifically stimulate immunity against the selected epitopes, and as of now, Yin *et al* have been able to develop a multi-epitope subunit vaccine from Omp 2b, Omp 16, Omp 31, and BP 26 that conferred high levels of protection against *B. melitensis* in mice<sup>18</sup>.

Altogether, guinea pigs immunized with the complex of ABOR protein and chitin or RB51 vaccine produced significantly higher specific IgG levels compared to the PBS group. This suggests that Th1-associated antibodies are generated in the humoral immune response against *Brucella*, enhancing the opsoni-

zation and phagocytosis activity. Furthermore, a comparison of PI in guinea pig spleen cells treated with *B. abortus* vaccine (RB51) and recombinant protein on days 0 and 5 suggested that ABOR protein and chitin is capable of responding in guinea pigs in the same manner as the *B. abortus* vaccine. Also, the levels of specific IgG against ABOR recombinant protein were significantly higher in positive sera with a mean absorbance values (A) at a wavelength of 450 nm of  $0.601 \pm 0.218$  compared to negative sera with a mean absorbance values (A) at a wavelength of 450 nm of  $0.218 \pm 0.078$  ( $p < 0.0001$ ) in the animals' humoral system stimulated by ABOR polypeptide and chitin.

### Conclusion

In the present study, the 549aa designed recombinant poly peptide extracted from five structural or secreted proteins of *B. abortus* combined with chitin as adjuvant, was found to be important as an immunogenic complex without any allergic or toxic effect on liver tissue. It showed ability for induction of cellular and humoral immunity in guinea pigs compared to RB51 vaccine.

### Ethical Statement

The Shahid Beheshti University of Medical Sciences (IR.SBMU.RETECH.AEC.1402.104) approved this animal research following the ethical guidelines of the principles of research on laboratory animals.

### Acknowledgement

The authors would like to thank the staff of the Cellular and Molecular Research Center at Shahid Beheshti University of Medical Sciences. This study was funded by the Cellular and Molecular Research Center at Shahid Beheshti University of Medical Sciences [grant number 43007351]. All authors have no conflict of interest.

### Conflict of Interest

The authors declare no conflict of interest.

### References

- Suárez-Esquível M, Chaves-Olarte E, Moreno E, Guzmán-Verri C. Brucella Genomics: Macro and Micro Evolution. *Int J Mol Sci* 2020;21(20):7749.
- Baldwin CL, Goenka R. Host immune responses to the intracellular bacteria Brucella: does the bacteria instruct the host to facilitate chronic infection? *Crit Rev Immunol* 2006;26(5):407-42.
- Skendros P, Pappas G, Boura P. Cell-mediated immunity in human brucellosis. *Microbes Infect* 2011;13(2):134-42.
- Saadat M, Gandomkar M, Bandehpour M, Bandehpour M, Kazemi B. Immunomics Approach to Develop an Immunogenic Polypeptide from Brucella abortus: Design and Recombinant Expression: Develop an immunogenic polypeptide from Brucella abortus. *Trends in Peptide and Protein Sciences*;8(1):1-7.
- Delpino MV, Estein SM, Fossati CA, Baldi PC, Cassataro J. Vaccination with Brucella recombinant DnaK and SurA proteins induces protection against Brucella abortus infection in BALB/c mice. *Vaccine* 2007;25(37-38):6721-9.
- Byndloss MX, Tsois RM. Brucella spp. virulence factors and immunity. *Ann Rev Anim Biosci* 2016;4:111-27.
- Zhan Y, Liu Z, Cheers C. Tumor necrosis factor alpha and interleukin-12 contribute to resistance to the intracellular bacterium Brucella abortus by different mechanisms. *Infect Immun* 1996;64(7):2782-6.
- Azizi M, Yousefi R, Yeganeh F, Hoseini MH. Study of the immune adjuvant effect of chitin microparticles on plasma levels of IgG1 and IgG2a during immunization against Leishmania infection in BALB/c mice. *J Res Med Sci* 2019;43(2):64-70.
- Goodwin ZI, Pascual DW. Brucellosis vaccines for livestock, *Vet Immunol Immunopathol* 2016;181:51-8.
- Lalsiamthara J, Lee JH. Development and trial of vaccines against Brucella. *J Vet Sci* 2017;18(S1):281-90.
- Hill AV. Vaccines against malaria. *Philos Trans R Soc Lond B Biol Sci* 2011;366(1579):2806-14.
- Watson PS, Novy PL, Friedland LR. Potential benefits of using a multicomponent vaccine for prevention of serogroup B meningococcal disease. *Inter J Infect Dis* 2019;85:22-7.
- Sarmadi M, Gheibi A, Khanahmad H, Khorramizadeh MR, Hejazi SH, Zahedi N, et al. Design and Characterization of a Recombinant Brucella abortus RB51 Vaccine That Elicits Enhanced T Cell-Mediated Immune Response. *Vaccines (Basel)* 2022;10(3):388.
- Kaushik P, Singh DK, Kumar SV, Tiwari AK, Shukla G, Dayal S, et al. Protection of mice against Brucella abortus 544 challenge by vaccination with recombinant OMP28 adjuvanted with CpG oligonucleotides. *Vet Res Commun* 2010;34(2):119-32.
- Golshani M, Buozari S. A review of brucellosis in Iran: epidemiology, risk factors, diagnosis, control, and prevention. *Iran Biomed J* 2017;21(6):349-59.
- Lalsiamthara J, Lee JH. Development and trial of vaccines against Brucella. *J Vet Sci* 2017; 18(S1):281-90.
- Bugybayeva D, Kydyrbayev Z, Zinina N, Assanzhanova N, Yespembetov B, Kozhamkulov Y, et al. A new candidate vaccine for human brucellosis based on influenza viral vectors: a preliminary investigation for the development of an immunization schedule in a guinea pig model. *Infect Dis Poverty* 2021;10(1):13.
- Yin D, Li L, Song D, Liu Y, Ju W, Song X, et al. A novel recombinant multi-epitope protein against Brucella melitensis infection. *Immunol Lett* 2016;175:1-7.
- Del Giudice G, Rappuoli R, Didierlaurent AM. Correlates of adjuvanticity: a review on adjuvants in licensed vaccines. *Semin Immunol* 2018;39:14-21.
- Da Silva CA, Hartl D, Liu W, Lee CG, Elias JA. TLR-2 and IL-17A in chitin-induced macrophage activation and acute inflammation. *J Immunol* 2008;181(6):4279-86.



21. Reese TA, Liang HE, Tager AM, Luster AD, Van Rooijen N, Voehringer D, et al. Chitin induces accumulation in tissue of innate immune cells associated with allergy. *Nature* 2007; 447(7140):92-6.
22. Da Silva CA, Pochard P, Lee CG, Elias JA. Chitin particles are multifaceted immune adjuvants. *Am J Respir Crit Care Med* 2010;182(12):1482-91.
23. Demirdag K, Ozden M, Kalkan A, Godekmerdan A, Kilic SS. Serum cytokine levels in patients with acute brucellosis and their relation to the traditional inflammatory markers. *FEMS Immunol Med Microbiol* 2003;39(2):149-53.
24. Kidd P. Th1/Th2 Balance: The Hypothesis, its Limitations, and Implications for Health and Disease. *Altern Med Rev* 2003;8(9):223-46.
25. Avila-Calderón ED, Lopez-Merino A, Sriranganathan N, Boyle SM, A Contreras-Rodríguez. A history of the development of *Brucella* vaccines. *BioMed Res Int* 2013; 2013:743509.
26. He Y, Vemulapalli R, Zeytun A, Schurig GG. Induction of specific cytotoxic lymphocytes in mice vaccinated with *Brucella abortus* RB51. *Infect Immun* 2001;69(9): 5502-8.
27. Fu S, Xu J, Li X, Xie Y, Qiu Y, Du X, et al. Immunization of mice with recombinant protein CobB or AsnC confers protection against *Brucella abortus* infection. *PLoS One* 2012;7(2):e29552.
28. Eze MO, Yuan L, Crawford RM, Paranavitana CM, Hadfield TL, Bhattacharjee AK, et al. Effects of opsonization and gamma interferon on growth of *Brucella melitensis* 16M in mouse peritoneal macrophages in vitro. *Infect Immun* 2000;68(1):257-63.
29. Sieira R, Comerci DJ, Sánchez DO, Ugalde RA. A homologue of an operon required for DNA transfer in *Agrobacterium* is required in *Brucella abortus* for virulence and intracellular multiplication. *J Bacteriol* 2000;182(17):4849-55.
30. Dorneles EM, Teixeira-Carvalho A, Araújo MS, Sriranganathan N, Lage AP. Immune response triggered by *Brucella abortus* following infection or vaccination. *Vaccine* 2015;33(31):3659-66.