

Erratum

Silencing of METTL3 effectively hinders invasion and metastasis of prostate cancer cells: Erratum

Yabing Chen^{1,2#}, Chun Pan^{1,2#}, Xiaotong Wang³, Dihui Xu^{1,2}, Yuhan Ma^{1,2}, Jianhang Hu^{1,2}, Peilin Chen^{1,2}, Zou Xiang⁴, Qiu Rao^{3✉}, Xiaodong Han^{1,2✉}

1. Immunology and Reproduction Biology Laboratory & State Key Laboratory of Analytical Chemistry for Life Science, Medical School, Nanjing University, Nanjing 210093, China.
2. Jiangsu Key Laboratory of Molecular Medicine, Nanjing University, Nanjing 210093, China.
3. Department of Pathology, Jinling Hospital, Nanjing University School of Medicine, Nanjing 210002, China.
4. Department of Health Technology and Informatics, Faculty of Health and Social Sciences, The Hong Kong Polytechnic University, Hung Hom, Kowloon, Hong Kong China.

#These authors contributed equally to this study.

✉ Corresponding authors: Qiu Rao, E-mail: raoqiu1103@126.com, Department of Pathology, Jinling Hospital, Nanjing 210002, China; Xiaodong Han, E-mail: hanxd@nju.edu.cn, Immunology and Reproduction Biology Laboratory, Medical School, Nanjing University, Nanjing 210093, China, Tel/fax: +86 25 83686497.

© The author(s). This is an open access article distributed under the terms of the Creative Commons Attribution License (<https://creativecommons.org/licenses/by/4.0/>). See <http://ivyspring.com/terms> for full terms and conditions.

Published: 2024.11.02

Corrected article: *Theranostics* 2021; 11(16): 7640-7657. doi: 10.7150/thno.61178.

The authors regret that some incorrect representative images were accidentally used in our previously published paper when the first author assembled the figures, including transwell images in Figure 2E, Figure 3K, and Western blot photos in Figure 3A. The correct figures are shown below and in the attached Supporting Information. The authors confirm that these corrections do not change the result interpretation or conclusions of the article. The authors are deeply sorry and sincerely apologize for any inconvenience or misunderstanding that may have caused.

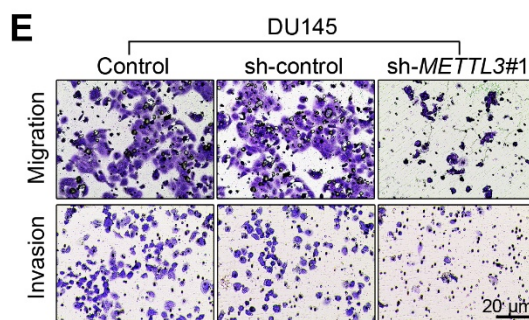


Figure 2. Corrected image for the original Figure 2E. Representative images of the cell migration and invasion assay results of DU145 cells were shown.

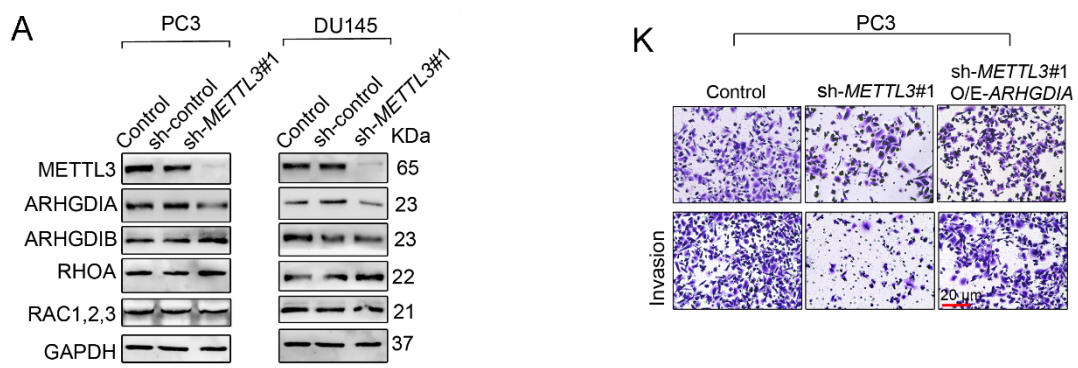


Figure 3. Corrected image for the original Figure 3A and Figure 3K. A. Western blotting was used to examine protein expression of invasion- and EMT-related genes. The migration and invasion abilities of PC3 cells were evaluated. **K.** Representative images of the migration and invasion assay results of PC3 cells were shown.