



REVIEW

**REVISED**

# Unveiling the fibrotic puzzle of endometriosis: An overlooked concern calling for prompt action

[version 2; peer review: 1 approved, 1 not approved]

Megha M Anchan <sup>1</sup>, Guruprasad Kalthur<sup>1</sup>, Ratul Datta<sup>2</sup>, Kabita Majumdar<sup>3</sup>, Karthikeyan P<sup>4</sup>, Rahul Dutta <sup>1</sup><sup>1</sup>Division of Reproductive Biology, Department of Reproductive Science, Kasturba Medical College, Manipal, Manipal Academy of Higher Education, Manipal, Karnataka, 576104, India<sup>2</sup>Nova IVF fertility, Guwahati, Assam, India<sup>3</sup>Gauhati Medical College & Hospital IVF centre, Bhangagarh, Gauhati Medical College, Assam, 781032, India<sup>4</sup>Department of General Surgery, Government Kallakurichi Medical College, Government Kallakurichi Medical College, Kallakurichi, Tamil Nadu, India**V2** First published: 01 Jul 2024, **13**:721  
<https://doi.org/10.12688/f1000research.152368.1>Second version: 02 Oct 2024, **13**:721  
<https://doi.org/10.12688/f1000research.152368.2>Latest published: 03 Dec 2024, **13**:721  
<https://doi.org/10.12688/f1000research.152368.3>**Abstract**

Endometriosis is a benign, estrogen-dependent, persistent chronic inflammatory heterogeneous condition that features adhesions caused by estrogen-dependent periodic bleeding. It is characterised by a widely spread fibrotic interstitium that comprising of fibroblasts, myofibroblasts, collagen fibres, extracellular proteins, inflammatory cells, and active angiogenesis found outside the uterus. Thus, fibrosis is recognized as a critical component because of which current treatments, such as hormonal therapy and surgical excision of lesions are largely ineffective with severe side effects, high recurrence rates, and significant morbidity. The symptoms include dysmenorrhea (cyclic or non-cyclic), dyspareunia, abdominal discomfort, and infertility. The significant lack of knowledge regarding the underlying root cause, etiology, and complex pathogenesis of this debilitating condition, makes it challenging to diagnose early and to implement therapeutic approaches with minimal side effects presenting substantial hurdles in endometriosis management. Research on understanding the pathogenesis of endometriosis is still ongoing to find biomarkers and develop non-hormonal therapeutic approaches. Current clinical research indicates a close relationship between endometriosis and fibrosis, which is thought to be tightly linked to pain, a major factor for the decline in the patient's quality of life but little is known about the underlying pathophysiological cellular and molecular signaling

**Open Peer Review****Approval Status**

	1	2
<b>version 3</b> (revision) 03 Dec 2024		
<b>version 2</b> (revision) 02 Oct 2024	 view	 view
<b>version 1</b> 01 Jul 2024	 view	

1. **Jae-Wook Jeong** , University of Missouri, Columbia, USA**Md Saidur Rahman**, University of Missouri, Columbia, USA  
University of Missouri School of Medicine  
(Ringgold ID: 12271), Columbia, USA2. **Asgerally T Fazleabas**, Michigan State University, Grand Rapids, MI, USA**Yong Song**, Michigan State University, East Lansing, USA

pathways that lead to endometriosis-related fibrosis. The available experimental disease models have tremendous challenges in reproducing the human characteristics of the disease to assess treatment effectiveness. Future translational research on the topic has been hindered by the lack of an adequate fibrotic model of endometriosis emphasizing the necessity of etiological exploration. This review article's goal is to examine recent developments in the field and pinpoint knowledge gaps that exist with a focus on the development of novel fibrotic mouse models for the early diagnosis and treatment of endometriosis and how this knowledge aids in the development of novel anti-fibrotic treatments which opens fresh avenues for a thorough investigation and extended research in the field of endometriosis.

Any reports and responses or comments on the article can be found at the end of the article.

### Keywords

Endometriosis, pelvic pain, etiology, animal model, Epithelial-mesenchymal transition, fibrosis



This article is included in the **Manipal Academy of Higher Education** gateway.

**Corresponding author:** Rahul Dutta ([rahul.dutta@manipal.edu](mailto:rahul.dutta@manipal.edu))

**Author roles:** **Anchan MM:** Conceptualization, Data Curation, Formal Analysis, Investigation, Methodology, Writing – Original Draft Preparation, Writing – Review & Editing; **Kalthur G:** Investigation, Project Administration, Validation, Visualization, Writing – Review & Editing; **Datta R:** Conceptualization, Supervision, Validation, Visualization, Writing – Review & Editing; **Majumdar K:** Methodology, Resources, Visualization, Writing – Original Draft Preparation, Writing – Review & Editing; **P K:** Investigation, Methodology, Resources, Validation, Writing – Review & Editing; **Dutta R:** Conceptualization, Funding Acquisition, Methodology, Project Administration, Resources, Supervision, Validation, Writing – Original Draft Preparation, Writing – Review & Editing

**Competing interests:** The authors state that the study was carried out without any commercial or financial links that could be seen as a potential conflict of interest.

**Grant information:** The work is funded by the Indian Council of Medical Research IIRPResearchIIRP-Small grant – DDR-IIRP-23-MCH-7 . *The funders had no role in study design, data collection and analysis, decision to publish, or preparation of the manuscript.*

**Copyright:** © 2024 Anchan MM *et al.* This is an open access article distributed under the terms of the [Creative Commons Attribution License](#), which permits unrestricted use, distribution, and reproduction in any medium, provided the original work is properly cited.

**How to cite this article:** Anchan MM, Kalthur G, Datta R *et al.* **Unveiling the fibrotic puzzle of endometriosis: An overlooked concern calling for prompt action [version 2; peer review: 1 approved, 1 not approved]** F1000Research 2024, 13:721 <https://doi.org/10.12688/f1000research.152368.2>

**First published:** 01 Jul 2024, 13:721 <https://doi.org/10.12688/f1000research.152368.1>

**REVISED Amendments from Version 1**

We have incorporated the suggested improvement into the revised manuscript. New details have been added to the introduction, and overview as suggested. The redundant portions have been edited out.

**Any further responses from the reviewers can be found at the end of the article**

**Introduction**

Endometriosis is an estrogen-dependent chronic inflammatory disorder resulting from the implantation of viable endometrial, epithelial, and stromal cells (lesions) outside the uterus and is often associated with infertility.<sup>1</sup> The condition affects at least 10% (~247 million) of women worldwide, with Asian women reporting the highest prevalence, with over ~42 million girls and women from India,<sup>2,3</sup> which can negatively affect the outcome of IVF treatments.<sup>4,5</sup> Endometriosis can result in severe dysmenorrhea, dyspareunia, and menorrhagia; exacerbates pelvic/abdominal pain; and eventually leads to infertility due to considerable damage to the structure and function of reproductive organs, even compromising the entire body system through the accumulation of fibrotic tissue.<sup>6</sup> The diagnosis can take 4 to 11 years due to difficulties in classifying and identifying the disease and its peculiar symptoms, as well as a lack of diagnostic indicators.<sup>7</sup> According to Maddern et al., endometriosis has a significant effect on a person's quality of life, reproductive health, and society at large.<sup>8</sup> Currently, the most widely recognized theory explaining how endometriosis begins is "Sampson's theory", which holds that the misplaced viable endometrium-like tissue is transferred onto the pelvic peritoneum by retrograde menstruation via the fallopian tubes.<sup>9</sup> Even after several decades of research, the etiology is still unclear and depends on a few key theories and assumptions, such as retrograde menstruation theory, embryonic remnants, coelomic metaplasia, immune dysfunction, inflammation, oxidative stress, hormones, dysfunctional apoptosis, the microbiome, metabolomics, endocrinology, and genetic expression differences, which fail to adequately explain its pathophysiology.<sup>2,9</sup> Retrograde menstruation is prevalent in healthy women, and only a small population of women develop this condition, contributing to the understanding of complex mechanisms that underlie the onset of this challenging condition.<sup>10</sup> While 90% of women of reproductive age undergo retrograde menstruation to the pelvic cavity, only 10% of them develop endometriosis. These findings suggest that the onset and progression of the disease in the peritoneal cavity depend on additional relevant factors.<sup>11</sup> This entails understanding how cells from the normal lining of the uterus find atypical locations, multiply excessively, escape immune and apoptotic processes, and acquire the necessary blood supply and nutrients that ultimately result in the formation of aberrant fibrotic lesions that contribute to the distinctive symptoms triggered by endometriosis, including excruciating pain and infertility.<sup>12</sup> None of the available theories fully capture the intricacies of fibrotic endometriosis, emphasizing the need for additional studies to identify the pathophysiology of endometriosis.<sup>13</sup> EMT is a process in which epithelial cells lose the polarized structure of the cytoskeleton and acquire the enhanced motility of mesenchymal cells. These modifications are considered necessary for the original formation of endometriotic lesions.<sup>14</sup> While fibrosis has been recognized as a prominent component of endometriosis, its importance is underexplored, particularly in relation to EMT. The production of fibrotic tissue, which contains fibroblasts, myofibroblasts, collagen fibers, and inflammatory cells, is increasingly recognized as a crucial element contributing to disease severity, including resistance to treatment and high recurrence rates.<sup>15</sup> This paucity of understanding of the molecular and cellular mechanisms encouraging fibrotic endometriosis, particularly through processes such as EMT, provides an important barrier to the development of appropriate diagnostic tools and therapeutic strategies. Moreover, the American Society of Reproductive Medicine (rASRM) categorization score approach does not account for pathology-based staging on the basis of fibrosis, which includes EMT, the mesenchymal-to-epithelial transition (MET), or smooth muscle metaplasia (SMM). This means that patients with fibrotic characteristics and adhesions may fail to obtain a reliable diagnosis.<sup>16</sup> Integrating fibrosis-specific indicators into diagnostic standards should increase the reliability of endometriosis diagnosis and staging, allowing for more targeted and successful treatment options.<sup>17</sup> The formation, invasion, and angiogenesis of fibrotic ectopic lesions are associated with disrupted immunoregulatory processes and a variety of inflammatory markers, including immune cells, cytokines, chemokines, matrix metalloproteinases, and other components associated with the immune system.<sup>18,19</sup> This makes it imperative to investigate and characterize the molecules involved in the emergence of this disease. Thus, a thorough understanding of the mechanisms underlying the origin and evolution of endometriosis is crucial for managing and evaluating the risks associated with this condition. In this review, we intend to address these gaps by providing a detailed understanding of the role of fibrosis in endometriosis, with a special focus on EMT. We will evaluate existing models of endometriosis, identify significant research gaps, and propose new directions for exploration. By emphasizing the importance of fibrosis-induced EMT in the emergence of endometriosis, we aim to identify possibilities for the development of novel therapeutic options that target these processes, thus increasing the prognosis of patients.

## Method

We conducted an electronic database literature search of PubMed and Google Scholar for published research articles on endometriosis and endometriotic animal models. The search terms “endometriosis”, “endometriosis mouse model”, “primate model of endometriosis”, “endometriotic patients”, and “endometriosis-associated fibrosis” were used. Articles with thorough experimental data and definitive results were considered for inclusion; those with inconclusive research findings were eliminated. We incorporated clinical trials, surveys of endometriosis-affected women, and observational and experimental studies, including animal studies, as references. Research written in languages other than English was not considered. All the graphics were prepared via Biorender software ([BioRender.com](https://www.biorender.com)).

## Literature review

### Fibrotic endometriosis overview: knowledge gaps and challenges

Endometriosis is characterized by the persistent occurrence of fibrosis and myofibroblasts within endometriotic lesions, which play critical roles in disease development, making fibrosis a molecular hallmark of endometriosis.<sup>15</sup> Notably, significant scarring is commonly linked to endometriosis.<sup>15</sup> Although the initial onset of endometriosis is associated with the existence of endometrial stroma and glands in abnormal locations, the endometrial components are often soon replaced by fibrotic and smooth muscle components.<sup>20</sup> For example, rectovaginal nodules frequently display glandular epithelium embedded deeply within fibromuscular tissue devoid of any surrounding stroma.<sup>21</sup> Similarly, in 40% of ovarian endometriomas, there is no detection of the endometrial epithelium, and the interior of the cyst is covered solely by fibrotic tissue.<sup>22</sup> Despite being a crucial pathological feature of the disease, pelvic adhesions generally lack any endometrial components.<sup>23</sup> These adhesions contribute to the pathology of some common symptoms of endometriosis, including chronic pelvic pain, deep dyspareunia, and infertility presumably aggravated by these fibrotic formations.<sup>23</sup> The process by which endometriosis progresses to a malignant condition remains unknown. However, continuous inflammation, immunological dysregulation, and fibrosis, most likely caused by iron-induced oxidative stress, may lead to genetic changes, which may lead to malignant features.<sup>24,25</sup> Fibrosis is believed to be linked to pain, which is the disease’s most common symptom and the principal cause of a patient’s poor quality of life.<sup>26</sup> Thus, understanding the underlying mechanisms will help to understand why the morphological characteristics of the disease do not match the degree and nature of fibrosis-related pain reported.<sup>27</sup>

Fibrotic tissue is characterized by excessive development of extracellular matrix (ECM) components inside and around inflamed or damaged tissue, and it is a typical and significant phase of tissue repair in all organs. Fibrosis involves activated platelets, macrophages, and myofibroblasts, which results in increased collagen deposition.<sup>28</sup> EMT is characterized by the transformation of polarized, stationary epithelial cells into highly motile mesenchymal cells.<sup>29</sup> Furthermore, fibrosis occurs with the transition from epithelial to mesenchymal cells in a variety of malignancies and is associated with poor prognosis.<sup>30</sup> Fibrosis and smooth muscle metaplasia are two of the main characteristics of endometriosis in women; fibrosis surrounds endometriotic tissue, and the degree of fibrosis is connected with the degree of smooth muscle metaplasia.<sup>31</sup> On the basis of these data, we postulate that fibrotic-based EMT involvement in chronic inflammatory responses may be a factor in the invasive nature of endometriotic lesions. Additionally, angiogenesis, which stimulates endothelial function, vascular permeability, and the emergence of experimental endometriosis, is commonly associated with increased invasive and metastatic potential.<sup>32</sup> Endometriotic lesions are thought to be “wounds” that undergo repeated tissue injury and repair (ReTIAR), leading to TGF- $\beta$ /Smad3-mediated EMT and ultimately resulting in fibrosis as the lesions progress. In essence, regardless of location or subtype, all endometriotic lesions are known to be similar to wounds that undergo ReTIAR, ultimately leading to the fibrotic emergence of both ovarian endometriomas (OMAs) and deep infiltrating endometriosis (DIE). From this viewpoint, comprehending the natural course of endometriotic lesions and recognizing the complexities involved in treating endometriosis are rather easy.<sup>25,33</sup> This makes it possible for solitary cells to pass through the basement membrane, grow invasively, and metastasize by both intra- and extravasation. Sampson’s implantation theory states that each of these occurrences is necessary for the development of an endometriotic lesion.<sup>34</sup>

Owing to differences in opinions concerning the etiology of the disease, the EMT route has received less attention in the context of endometriosis than it does in cancer research. Recently, most research on EMT in endometriosis has focused on tissues; very few studies have examined the specific transcription factors involved in EMT signaling that are present in endometriotic cells.<sup>35,36</sup> EMT-related processes in endometriosis have been reported to be far more prevalent in ectopic endometrial lesions than in eutopic endometria, suggesting that EMT may contribute to the development of endometriosis.<sup>37</sup> For example, in fibrosis of organs such as the lungs, liver, and kidney, the involvement of the TGF- $\beta$  signaling pathway is well documented.<sup>38</sup> TGF- $\beta$  is an influential growth factor and a chemical that attracts monocytes and is capable of triggering fibrosis and angiogenesis during abnormal growth and promoting the progression of endometriosis.<sup>39</sup> Compared with those of normal women, the peritoneal fluid of stage III and IV endometriosis patients has greater levels of TGF- $\beta$ .<sup>40</sup> If the underlying mechanisms are unknown, they may explain why the disease’s morphological

characteristics do not match the extent and nature of fibrosis-induced pain sensations.<sup>27</sup> Endometriosis research is mostly based on nonhuman primate or rodent models due to the apparent limitations and ethical concerns of human experimentation. The available mouse models have aided in investigating several aspects of the disorder, such as early disease phases,<sup>41</sup> steroid hormone involvement,<sup>42</sup> host inflammatory mechanisms,<sup>43,44</sup> oxidative stress,<sup>45,46</sup> neuroangiogenesis,<sup>47</sup> and infertility,<sup>48</sup> in mice. However, there is a paucity of information on the development of preclinical models that define clinically effective endpoints such as EMT-induced fibrosis. Consequently, studies on the molecular pathways associated with EMT or possible targets for therapeutic intervention for EMT and fibrosis in endometriosis have been stopped because of the unavailability of an animal model of endometriosis that mimics the human condition. Furthermore, 50–70% of drugs that have advanced to phase II and III clinical trials are unable to show efficacy, indicating the insufficiency of current disease models in the exploration of critical biological processes.<sup>49</sup> Additionally, in their mouse model of endometriosis, Modi et al. reported significant inflammation but no histological fibrosis, and no EMT or fibrosis is typical in endometriosis.<sup>50</sup> These findings suggest that there are not enough disease models to investigate crucial biological processes. Given the chronic nature of the disease, we anticipate that both EMT and fibrosis processes may play substantial roles in the evolution of endometriosis, potentially leading to fibrotic adenomyosis. In summary, we intend to highlight the need for an ideal model for investigating endometriosis that reflects the cellular and pathophysiological processes and clinical behaviors observed in human patients, specifically fibrosis leading to scar formation and EMT linked with invasion and metastasis.

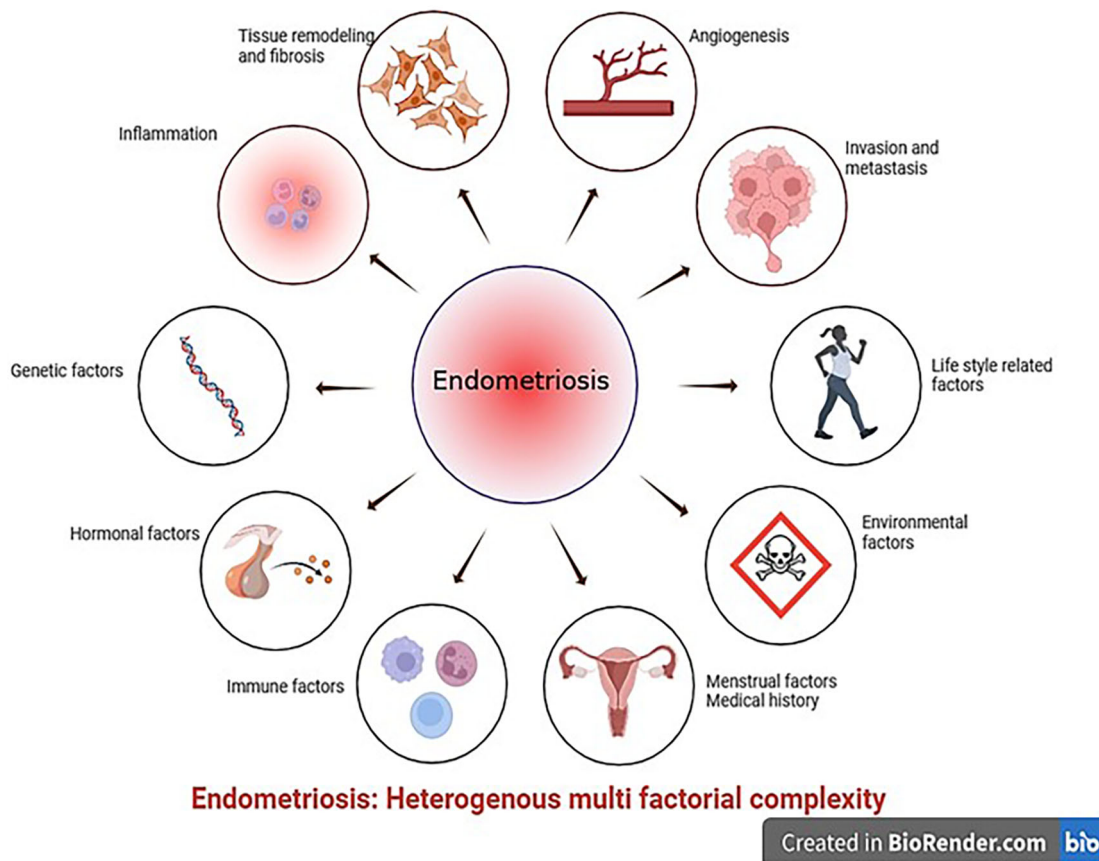
### Endometriotic models: Importance of addressing gaps in preclinical animal models

Rodent models fail to accurately reproduce critical aspects of human endometriosis, such as EMT-induced chronic fibrosis. These limitations hamper the successful translation of research findings to human disease situations. This underlines the demand for a higher-fidelity mouse model that better depicts the complicated pathophysiology of endometriosis in humans. According to Greaves et al., endometriosis is currently being studied via two basic approaches: human-based *in vitro* samples and experimental *in vivo* animal models. The first type involves experimental *in vitro* research using tissue biopsies and fluids obtained from resected lesions or aspiration biopsies, such as endometrial and peritoneal explants, endometriotic cell lineages, primary endometrial stromal cells, endometrial stem cells, and immune cells.<sup>51</sup> *In vivo* animal models are essential for assessing drug candidates and for preclinical trial testing. Our knowledge of the early phases of disease development, including the effects of the peritoneal microenvironment, inflammatory responses, and steroid responsiveness, has improved because of these models.<sup>52</sup> However, replicating *in vitro* or *in vivo* models that accurately mimic the latent features identified in patients with endometriosis, such as EMT or fibrosis, is challenging for various reasons. First, endometriosis is complex, multifactorial, and heterogeneous, as none is certain condition's onset or duration, making it challenging to model consistently. Second, the disease appears in numerous forms, including peritoneal, deep infiltrative lesions, and ovarian endometriomas, each displaying unique pathological features.<sup>53</sup> Finally, endometriosis cannot be effectively characterized on the basis of a single pathophysiological mechanism. Additionally, this condition is connected with genetic,<sup>54</sup> immunological,<sup>55</sup> environmental,<sup>56,57</sup> and hormonal changes, such as progesterone resistance<sup>58</sup> and estrogen reliance,<sup>59</sup> further challenging the establishment of acceptable animal models (Figure 1).

### Limitations of available rodent models in endometriosis research

Endometriosis is termed the 'missing disease' because of its ambiguous etiology and discrepancies in its origin, diagnosis and treatment.<sup>60</sup> Despite a recent surge in endometriosis research, the underlying pathobiology of the disease remains poorly known, implying that animal models of the disorder are crucial for future studies in this field. This ambiguity highlights the need for animal models that precisely mimic human endometriosis and elucidate its conditions, which can provide a basis for subsequent research.<sup>61</sup> One of the most significant obstacles in endometriosis research is the lack of reliable mouse models that characterize the manifestations of this condition in humans.<sup>62</sup> Ideally, a disease model should mirror human disease while also allowing researchers to investigate the effects of intrinsic (e.g., genes) and extrinsic (e.g., environment) factors on disease progression. Many previous studies linked fibrosis secondary to the development of endometriosis, and there has not been much research on fibrosis itself.<sup>16,64</sup> Research from animal models clearly revealed that a percentage of women receiving hormone therapy in human trials do not respond to these drugs<sup>64</sup> and require surgical lesion removal to alleviate symptoms. Women may have endometriotic lesions that have progressed to a fibrotic state by the time they seek medical attention, rendering treatment ineffective. This highlights the urgent need for the establishment of an *in vivo* model that can effectively mimic the development and characteristics of human endometriosis, opening avenues for more effective treatments and a deeper understanding of this disease. These findings will also facilitate the understanding of the connection between the origin of fibrosis in endometriosis, existing medical care, and potential targets for therapy.





**Figure 1. Schematic representation of the local triggers responsible for the development of endometriosis (created with Biorender.com).**

### Primate model of endometriosis

Until recently, the evidence supporting the process of fibrosis has been derived from *in vitro* experiments conducted in humans and from *in vivo* studies in more vertebrates, such as baboons. Nonhuman primates and higher vertebrates are potential candidates for disease research because of their anatomical resemblance to human reproductive organs.<sup>65</sup> Controlled experimental investigations on humans are limited because assessing disease prevalence and development necessitates numerous laparoscopies, which are challenging for a variety of reasons. Although endometriosis occurs spontaneously in humans, human investigations have been limited for ethical and practical reasons, with one of the primary reasons being the difficulty of studying the disease. As a result, understanding the mechanisms that cause this disease requires the use of an appropriate animal model. Endometriosis has long been investigated in both primates and nonprimate animals. The spontaneous endometriosis of the baboon<sup>66–68</sup> limitation is that baboons have vast and effective mechanisms for clearing and regenerating their peritoneum.<sup>68</sup> In contrast, in rhesus monkeys,<sup>69,70</sup> the significance of peritoneal cysts in endometriosis pain and discomfort has not been investigated. The cynomolgus monkey,<sup>71,72</sup> has been described, with the limitations that deep lesions are difficult to diagnose and that time course changes in the condition are not investigated. Although nonhuman primates are excellent models for studying endometriosis, they are expensive to maintain and extremely sensitive to captivity. Furthermore, spontaneous endometriosis occurs at a low frequency, limiting the use of primates in research.<sup>73</sup> Although ideal regarding fidelity, the use of nonhuman primates in endometriosis research is restricted because they are expensive to maintain, require a longer duration to develop endometriotic lesions, spontaneous endometriosis occurs at a low frequency, an extended period of gestation for fertility research, and ethical aspects.<sup>74</sup> For numerous reasons, the mouse is increasingly adopted as a preclinical model development tool in biomedical research, as it is a molecularly well-annotated species that allows researchers to utilize several interrogative methods to explore complicated multifactorial diseases and is suitable for dissecting the molecular underpinnings of disease pathogenesis because of the simplicity of genetic modification and focused changes in candidate genes.<sup>74</sup> However, because research facilities for primates are restricted, nonprimate experimental animal species, such as mice or rats, are considered ideal first-line techniques for investigating the etiology of this mysterious disease.

### Rodent models of endometriosis

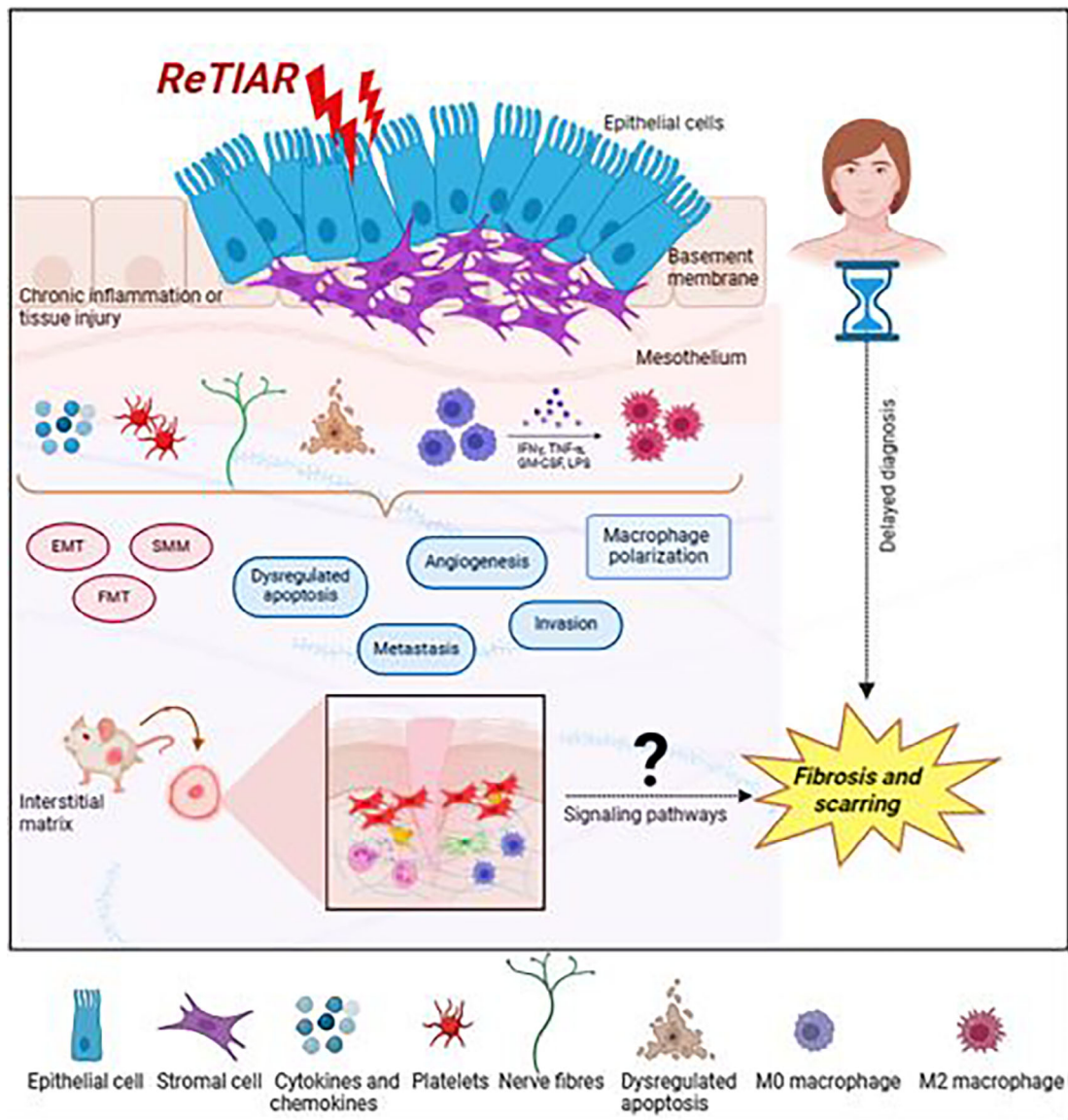
Every menstrual cycle, endometriosis is characterized by the development of new lesions and the advancement of preexisting lesions. Therefore, additional research is needed to understand the natural course and gradual development of endometriosis lesions.<sup>75</sup> There is evidence of gradual lesion clearing, but only a small number of studies using mouse models of endometriosis have investigated disease induction and regression.<sup>75,76</sup> It is unethical to perform many laparoscopies on endometriosis patients to monitor disease progression. Therefore, longitudinal studies of lesion formation and progression can considerably increase the translational efficiency of preclinical models of endometriosis.<sup>75</sup>

Mice are the most popular experimental animal models because of their ease of gene manipulation, availability, and handling, tissue similarity *in vivo*, small size and large litter, which make them cost-effective, and their relatively short gestation, which allows transgenerational examination.<sup>52</sup> On the basis of the vast majority of already available research publications, two types of mouse models have been successfully used to implant endometriotic lesions. The first approach involves suturing, whereby human endometriotic implants are surgically autotransplanted into the peritoneum of immunocompromised mice.<sup>77–79</sup> The second approach involves the intraperitoneal or subcutaneous implantation of autologous uterine segments into the peritoneum of recipient mice from a syngeneic donor.<sup>47,80,81</sup> Although there are numerous reports describing the spontaneous attachment, growth, and proliferation of endometriotic lesions, these lesions do not accurately reflect human endometriosis because they do not exhibit characteristics such as chronic, persistent fibrosis for internal scarring, or invasiveness resulting from EMT. Moreover, these animal models provide data on the inflammatory processes generated by implanted lesions rather than those caused by endometriosis. Rats can only produce superficial lesions, which are the most fundamental and possibly least clinically significant types of lesions. The inability of any study to recreate fibrotic endometriotic lesions may account for the failure of rat models to yield data relevant to the pathophysiology and treatment of human endometriosis. This situation demonstrates that the preclinical animal studies that have been established are not transferable.<sup>82</sup> Many studies using rodents as a model for endometriosis have investigated the gene expression patterns of ectopic tissue deposits in rats in an attempt to correlate them with human endometriotic lesions. Chronic inflammation, angiogenesis, and extracellular matrix remodeling are common pathways.<sup>83–85</sup> While some aspects of the disease are replicated in the rodent model, all the modifications involve suturing uterine fragments (endometrium plus myometrium) to different sites, which does not accurately represent the formation of lesions from those shed endometrial tissue or the dissemination of menstrual tissue into the peritoneum. Notably, particularly in terms of understanding its pathophysiology and treatment options, the current rodent models have not been successful in yielding findings that apply to human endometriosis. Therefore, fibrosis, a mostly disregarded component of human endometriosis, should be taken into consideration.<sup>86,87</sup> However, efforts to translate the results into humans were unsuccessful in offering effective endometriosis treatments. Therefore, developing novel rodent models that mirror the continuous fibrotic process observed in endometriotic patients is essential for improving our understanding of this disease. An increasing amount of research has recently focused on the role that fibrosis plays in clinical-grade endometriosis. On the other hand, little is known about fibrosis treatment strategies. Therefore, developing a fibrotic mouse model of endometriosis, elucidating the regulatory processes underlying fibrosis in endometriosis, and identifying more precise specific biomarkers for this disease are critical. These markers can also be utilized to find effective therapeutic targets and identify endometriosis in its early phases (Figure 2).

To mimic the fibrotic scarring observed in endometriosis, many endometriotic fibrotic animal models have been developed (Table 1). Furthermore, new *in vivo* models that use stromal cells generated from menstrual blood have been created to study endometriosis; these models show enhanced endometriotic cell migration and proliferation.<sup>58</sup> Many cues, including estrogen stimulation, may trigger EMT.<sup>88</sup> Furthermore, estrogen-induced EMT in Ishikawa cells promotes adenomyosis.<sup>89</sup> However, how estrogen causes EMT in endometriosis at the molecular level remains unknown. To prevent fluctuations in mouse estradiol levels during the estrous cycle, the majority of established mouse models use ovariectomized mice.<sup>90–93</sup> As a result, the steady availability of estradiol in the circulation may help promote lesion establishment and growth. However, research on how estrogen-induced EMT in endometriosis affects fertility, such as in women with normal circulating estrogen, is impossible. Therefore, studies of endometriosis produced in intact mice call for more research on the connection between ectopic tissue and fertility.

### Human experiment details

After years of relentless advocacy from individuals affected by the condition, endometriosis is gradually gaining increased attention, as evidenced by an increase in research, particularly large-scale controlled human trials and meta-analyses, which have the potential to significantly increase awareness of the condition and its management. In endometriotic lesions, TGF- $\beta$  family members, the Notch receptor, and the bioactive sphingolipid sphingosine 1-phosphate (S1P) cause tissue fibrosis and change signaling pathways.<sup>96</sup> NF- $\kappa$ B is activated in endometriotic lesions and peritoneal macrophages, which are essential for the inflammation associated with endometriosis. It has been demonstrated that inhibiting NF- $\kappa$ B decreases the development and progression of endometriosis in women as well as



**Figure 2. Schematic illustration of the endometriotic lesion milieu and variables expressed contributing to the progression of peritoneal endometriosis (created with Biorender.com).**

its associated symptoms.<sup>101</sup> Estrogen can promote the formation and dissemination of endometriosis ectopic lesions by upregulating the expression of the transcription factor Slug in ectopic endothelial cells and inducing EMT.<sup>89</sup> Fibrogenesis in endometriosis may be facilitated by aberrant Wnt/ $\beta$ -catenin pathway activation and reversed by blocking the Wnt/ $\beta$ -catenin pathway.<sup>98</sup> TGF- $\beta$ 1 may stimulate the expression of N-cadherin, OCT4, and Snail in ectopic stromal cells, suggesting that TGF- $\beta$ 1 facilitates cell invasion.<sup>99</sup> The AKT and ERK signaling pathways may work synergistically to promote the formation of deep endometriotic lesions by increasing endometriotic stromal cell proliferation in a fibrotic milieu *in vitro*.<sup>94</sup>

By inducing EMT and FMT in endometriotic lesions, platelet-derived TGF- $\beta$ 1 stimulates SMM and fibrosis.<sup>95</sup> Evidence suggests that EMT induces fibrogenesis in addition to increasing cellular invasiveness. For example, the TGF- $\beta$ 1/Smad3 signaling pathway, which is driven by platelets, is known to induce EMT and FMT in endometriotic lesions, which eventually results in SMM and fibrosis.<sup>95</sup> Targeting TGF- $\beta$ 1 may be an effective strategy to prevent fibrosis and adhesion formation since endometriotic cells release TGF- $\beta$ 1, which induces ECM disorganization and fibrosis in the tissues of ovarian endometriotic patients.<sup>100</sup> Oxidative stress has been linked to the ADAM17/Notch signaling pathway and perhaps fibrosis, according to a study performed on endometriosis patients.<sup>97</sup> Furthermore, endometriotic cells of



**Table 1.** This paper outlines rodent research on endometriosis and the genes associated with fibrosis.

Model	Fibrotic gene	Mechanism	References
BALB/c	TGF- $\beta$ 1, p-Smad3, CCN2, $\alpha$ -SMA, collagen I and LOX	EMT, FMT, SMM and fibrosis	<sup>90</sup>
BALB/c	PCNA, VEGF, collagen I, $\alpha$ -SMA, and LOX	FMT and fibrosis	<sup>94</sup>
BALB/c	$\beta$ -catenin	Fibrosis	<sup>95</sup>
BALB/c	VEGF, MVD, PCNA, p-p65, COX-2, TGF- $\beta$ 1, $\alpha$ -SMA, and collagen I	Fibrosis	<sup>92</sup>
C57BL/6	VEGF, PCNA, COX-2, p-p65, collagen I, $\alpha$ -SMA, Fibronectin, FGFR2, MVD, Platelets	Inflammation and fibrosis	<sup>91</sup>
C57BL/6	TGF- $\beta$ and KLF 10 and 11	Fibrosis	<sup>96,97</sup>
C57/BL6	COL1A1/Col1a1	Fibrosis	<sup>98</sup>
C57BL/6	Nrf2	Fibrogenesis	<sup>99</sup>
C57BL/6	PIM2	Fibrosis	<sup>100</sup>

endometriomas express Smad2, Smad3, and Smad4 (as well as their phosphorylated forms), which causes fibrosis and adhesion to ovarian tissues, suggesting a role for TGF- $\beta$ 1/Smad signaling.<sup>100</sup> FOXP1 uses Wnt signaling to increase fibrosis in endometriosis.<sup>102</sup> Through their effects on tissue repair, senescence, EMT, FMT, and proliferation of fibroblasts/myofibroblasts, mutations in TP53, PTEN, ARID1A, PIK3CA, KRAS, and PPP2R1A promote the development and fibrogenesis of endometriosis.<sup>103</sup> A significant increase in the mRNA levels of  $\alpha$ -SMA, vimentin, N-cadherin, fibronectin, PAI-1 (Serpine1), Snail, Slug, and LOX was detected.<sup>104</sup> Growth factors such as TGF- $\beta$ 1, PDGF, EGF, and CTGF are released by activated platelets in lesions, facilitating fibrogenesis in endometriotic patients with deep endometriosis and ovarian endometrioma.<sup>105</sup> NR4A1 is a novel pro-endometriotic transcription factor that accelerates the development of endometriosis.<sup>106</sup> HOXC8 stimulates TGF- $\beta$  signaling, which affects adhesion, cell proliferation, migration, and ovarian endometrioma.<sup>107</sup> FAK, an intracellular nonreceptor tyrosine kinase, mediates a series of processes involved in the development of endometriosis, including cell adhesion, the inflammatory response, and fibrosis signaling, in patients with endometriomas.<sup>108</sup> In ectopic ESCs derived from retrograde menstruation, PGE2/thrombin is known to induce modifications such as FMT and EMT, which are linked to fibrotic changes in lesions. Through the EMT and FMT processes, proinflammatory substances such as PGE2 and thrombin in retrograde menstrual fluid are jointly implicated in generating endometriosis fibrosis in endometriotic patients. These findings suggest potential targets for treatment to mitigate fibrosis.<sup>36</sup> In addition to fibrotic and EMT markers, numerous processes, such as pyroptosis, the NLRP3 inflammasome, and deregulation of the long noncoding RNA MALAT1, have been shown to cause fibrosis in endometriotic patients.<sup>90</sup> Reducing the number of lesions by targeting inflammatory molecules such as IL-8 is also known to reduce fibrosis and adhesions, highlighting the potential for disease-modifying therapy.<sup>109</sup> Although existing studies have shed light on identifying genes associated with fibrosis in endometriosis, further exploration of the intricate signaling networks underlying this condition remains necessary. This gap underscores the necessity for future research employing advanced methodologies such as knockout models, high-throughput RNA sequencing, and omics techniques. These techniques provide clearer insights into the mechanisms of fibrotic indicators and assist in validating their function in endometriosis development, providing solid evidence for the discovery of drugs that hinder, terminate, and reverse fibrosis progression and benefit endometriotic patients.

### Interplay of EMT and MMPs in endometriosis

Endometriosis is a common benign gynecological disease with a high propensity for migration and invasion. The cell-to-cell or cell-ECM connections allow the cells to migrate, invade, and proliferate in new locations. MMPs are linked to adhesion, invasion, and the severity of endometriosis. These findings indicate that MMPs play a role in extracellular matrix remodeling, which is necessary for the development of ectopic endometriosis lesions.<sup>110</sup> They are also significantly more abundant in the endometrial and peritoneal fluid of endometriosis patients.<sup>111,112</sup> Matrix metalloproteinases (MMPs) are a family of enzymes that are mostly found in the functional layer of the endometrium. They are secreted by resident immune cells and stromal fibroblasts, which facilitate the remodeling of the extracellular matrix, including collagen, elastins, and other glycoproteins, and endometrial disintegration during menstruation. Tissue inhibitors of matrix metalloproteinases (TIMPs) are endogenous antagonists that reduce MMP overexpression, and ovarian steroid hormones are known to control MMP activity.<sup>113</sup> For early clinical studies of EMT, the nude mouse is a suitable model, particularly for the identification of MMP-2 and TIMP-2, proteins that seem to play a significant role in the pathophysiology of EMT. Estrogen specifically increases MMP-2 expression to encourage ectopic implantation of the

endometrium. On the other hand, progestin can suppress TIMP-2 expression, increasing the MMP-2/TIMP-2 ratio and increasing the invasiveness of the ectopic endometrium to facilitate implantation.<sup>114</sup> In ovarian endometriosis, MMP7 facilitates EMT; EGF increases MMP7 expression by activating the ERK1–AP1 pathway.<sup>115,116</sup> MMP14 affects the development and function of invadopodia, which in turn modulates the ability of mesenchymal cells to invade and migrate.<sup>117</sup> MMP-2 and MMP-9, two important enzymes involved in the destruction of diverse types of ECM, have been linked to the development of endometriosis by regulating endometrial cell invasion.<sup>118</sup> Both MMP-2 and MMP-9 have been shown to function as biomarkers of both EMT and triggering factors that contribute to the progression of EMT.<sup>119</sup> As a result, we hypothesize that MMPs may be crucial in controlling the endometriosis-related EMT process. However, further research is needed to fully understand the connection between MMPs and EMT in fibrotic endometriosis, as there are not enough comprehensive studies on this topic. Despite this, it is apparent that MMPs play crucial roles in collagen production, which is necessary for the gradual development of endometriosis fibrosis.<sup>106</sup> These findings suggest that there may be a precise equilibrium between collagen synthesis and breakdown, which should be investigated further. As a result, we hypothesize that MMPs may be crucial in controlling the endometriosis-related EMT process. However, further research is needed to fully understand the connection between MMPs and EMT-induced fibrosis in endometriosis, as there are not enough comprehensive studies on this topic.

## Discussion

Endometriosis is an underdiagnosed chronic inflammatory disease that affects millions of people around the world. The primary explanation for endometriosis growth is the transplantation of living endometrial cells that are refluxed after menstruation, thereby attaching to and invading other pelvic organs and leading to inflammation and fibrosis.<sup>2</sup> Despite its broad incidence and importance, endometriosis research has significant limitations.<sup>120</sup> The gaps include a lack of understanding of the disease's etiology, a delay in diagnosis that necessitates invasive treatments, and the difficulties of integrating electronic health records for research, which aids in identifying potential therapeutic tools and reminds us to look beyond endometriotic lesions.<sup>121</sup> Currently, 50 to 70% of endometriotic drugs that have advanced to phases II and III in clinical trials are unable to show efficacy, suggesting an unfulfilled research gap in the development of appropriate animal models.<sup>119</sup> Endometriotic fibrosis shares characteristics with other fibrotic conditions, including increased myofibroblast and smooth muscle cell activity, high levels of fibrotic-associated growth factor and protein production, epithelial-to-mesenchymal transition, and collagen deposition.<sup>16</sup> There is substantial evidence that fibrosis is a molecular characteristic of endometriosis etiology along with other molecular hallmarks, such as immunological dysregulation, ER expression, progesterone resistance, chronic inflammation, angiogenesis, and epigenetic changes.<sup>16</sup> Interestingly, fibrosis, as a histologic feature of lesions, can progress, most likely due to repeated tissue injury and repair caused by inflammation-induced recurrent menstrual bleeding.<sup>25,120</sup> Thus, a thorough understanding of the disease process is needed for progress in the fields of biomarker identification and nonhormonal therapy. Fibrosis may impair drug administration and efficacy. Rather, a study into the mechanisms that resolve fibrosis will uncover new possibilities by discovering new targets for pharmacologically regulating this condition, notably in the pharmacology of multicomponent medications.<sup>103,121</sup> Because EMT-induced fibrosis is numerous and diverse and plays vital functions in various human body systems, robust longitudinal studies are needed to [a] confirm biomarkers and underlying mechanisms linked with fibrosis progression, providing insights into disease causes and potential diagnostic or prognostic tools. [b] To investigate temporal dynamics to record the advancement of fibrosis over time, researchers can better comprehend its development from early stages to advanced stages, thereby allowing early intervention and personalized treatment methods. [c] Investigating treatment efficacy, or the effectiveness of various interventions for fibrosis, can provide useful data on long-term outcomes and responses. [d] To better understand the natural course of fibrosis, including its variations among individuals, potential triggers, and variables influencing its progression, preventive and targeted therapeutics should be created. [e] To determine whether the inflammatory environment of endometriosis is involved in fibrosis. The proposed pathways by which endometriosis participates in fibrosis require further investigation. Indeed, discovering fibrosis-specific therapies for endometriosis remains a significant issue. As a result, further inquiry and investigation are needed in the future. Identifying the underlying etiology of endometriosis is more difficult because the disease's missing components, such as EMT-induced fibrosis, have yet to be replicated in experimental rodent models. Filling these gaps may lead to more accurate patient diagnoses, more effective medications, and better knowledge of how the disorder affects women's lives. Any treatments that help reduce the fibrotic aspect of the disease will have far-reaching implications for the individual, the population, and the healthcare system. These thought-provoking articles show our reliance on carefully selected animal models to advance our understanding of endometriosis. These findings emphasize the multisystem characteristics of endometriosis, as well as the need for researchers to think beyond only the endometrial lesion. As we have come to expect, no single cause can explain endometriosis, yet these studies suggest that more therapeutic methods to improve the quality of life for affected people are needed. This breakthrough in the construction of models represents promising research that could have substantial beneficial consequences for patients. Translating these research findings into clinical care will undoubtedly aid in shortening the extended delay to diagnosis and understanding the epidemiological underpinnings of the condition.

## Conclusion

Endometriosis is a prevalent gynecological condition that significantly affects the physical and emotional well-being of female patients because of its invasive and recurrent characteristics. Fibrosis, as a histological characteristic of lesions, may progress, presumably due to recurrent tissue injury and repair. In a nonhuman primate model of endometriosis, the predominant type of peritoneal lesion transitioned from red vesicular to white fibrotic over the course of time. However, the association between endometriosis and fibrosis is poorly understood. Additionally, EMT may play a role in the etiology of endometriosis through immunological regulation, the production of proinflammatory cytokines, and other mechanisms. Clinical trials have shown that targeting EMT-induced fibrosis can help treat endometriosis, establishing a new research direction and theoretical foundation for the diagnosis and treatment of fibrotic endometriotic patients. As randomized, double-blinded investigations of endometriosis in women are difficult and at times ethically restrictive, animal models for endometriosis have evolved into vital tools for obtaining a mechanical understanding of the etiology and pathophysiology mechanisms of this complex condition. Thus, it is vital to examine the molecular pathways that drive and sustain fibrosis in endometriosis via a novel fibrosis-based animal model to discover new pharmacological targets and provide creative therapeutics for patients. Furthermore, the research connecting endometriosis and fibrosis has added a further complicating factor to the shared strategy for dealing with endometriotic patients with infertility, as well as a potentially essential concern in the counseling and management of the condition for those desiring future fertility. Well-designed longitudinal studies are needed to improve clinical decision-making in these contexts. Although gynecological surgeons are aware of the complex role of fibrosis in the surgical treatment of endometriosis, the molecular pathways that relate fibrosis to endometriosis-associated pain and infertility remain unknown. Thus, more research is needed to better understand the clinical implications of fibrosis and identify it as a molecular marker of endometriosis etiology, a potentially important element to consider when counseling and managing endometriotic patients who are planning to have children in the future. Well-designed longitudinal studies are needed to make more informed clinical decisions in these contexts. Efforts should be focused on building trustworthy models that incorporate physiologically relevant cells, such as organoids and microfluidics. The continued creation of mouse models to aid in understanding the processes of endometriosis development offers the best chance of creating therapeutic options to prevent or reverse this mysterious disease. This review aims to spark a debate on the need to revise the present understanding by focusing on the fibrotic features of endometriosis pathogenesis. We believe that this approach will shed new light on this condition and suggest areas that need to be investigated further.

## Data availability statement

No data are associated with this article.

## Acknowledgments

We would like to thank bioRENDER ([biorender.com](https://biorender.com)) for assisting in drawing all the graphics.

## References

- Bonavina G, Taylor HS: **Endometriosis-associated infertility: From pathophysiology to tailored treatment.** *Front Endocrinol.* 2022; **13**: 1020827.  
[PubMed Abstract](#) | [Publisher Full Text](#) | [Free Full Text](#)
- Sourial S, Tempest N, Hapangama DK: **Theories on the pathogenesis of endometriosis.** *Int J Reprod Med.* 2014; **2014**: 1–9.  
[Publisher Full Text](#)
- Gajbhiye RK, Montgomery G, Pai MV, et al.: **Protocol for a case-control study investigating the clinical phenotypes and genetic regulation of endometriosis in Indian women: the ECGRI study.** *BMJ Open.* 2021 Aug 9; **11**(8): e050844.  
[PubMed Abstract](#) | [Publisher Full Text](#) | [Free Full Text](#)
- Yen CF, Kim MR, Lee CL: **Epidemiologic Factors Associated with Endometriosis in East Asia.** *Gynecol Minim Invasive Ther.* 2019; **8**(1): 4–11.  
[PubMed Abstract](#) | [Publisher Full Text](#)
- Alson S, Henic E, Jokubkiene L, et al.: **Endometriosis diagnosed by ultrasound is associated with lower live birth rates in women undergoing their first in vitro fertilization/intracytoplasmic sperm injection treatment.** *Fertil Steril.* 2024 May 1; **121**(5): 832–841.  
[PubMed Abstract](#) | [Publisher Full Text](#)
- Taylor HS: **Endometriosis: a complex systemic disease with multiple manifestations.** *Fertil Steril.* 2019 Aug; **112**(2): 235–236.  
[PubMed Abstract](#) | [Publisher Full Text](#)
- Gajbhiye RK: **Endometriosis and inflammatory immune responses: Indian experience.** *Am J Reprod Immunol N Y N* 1989. 2023 Feb; **89**(2): e13590.  
[Publisher Full Text](#)
- Sampson JA: **Metastatic or Embolic Endometriosis, due to the Menstrual Dissemination of Endometrial Tissue into the Venous Circulation.** *Am J Pathol.* 1927 Mar; **3**(2): 93–110.43.  
[PubMed Abstract](#)
- Taylor HS, Kotlyar AM, Flores VA: **Endometriosis is a chronic systemic disease: clinical challenges and novel innovations.** *Lancet Lond Engl.* 2021 Feb 27; **397**(10276): 839–852.  
[PubMed Abstract](#) | [Publisher Full Text](#)
- Horne AW, Missmer SA: **Pathophysiology, diagnosis, and management of endometriosis.** *BMJ.* 2022 Nov 14; **379**: e070750.  
[Publisher Full Text](#)
- Malvezzi H, Marengo EB, Podgaec S, et al.: **Endometriosis: current challenges in modeling a multifactorial disease of unknown etiology.** *J Transl Med.* 2020 Aug 12; **18**(1): 311.  
[PubMed Abstract](#) | [Publisher Full Text](#) | [Free Full Text](#)
- Bafort C, Beebejaun Y, Tomassetti C, et al.: **Laparoscopic surgery for endometriosis.** *Cochrane Database Syst Rev.* 2020 Oct 23; **10**(10): CD011031.  
[PubMed Abstract](#) | [Publisher Full Text](#)
- Canis M, Donnez JG, Guzik DS, et al.: **Revised American Society for Reproductive Medicine classification of endometriosis: 1996.**

- Fertil Steril.* 1997 May; **67**(5): 817–821.  
[Publisher Full Text](#)
14. Somigliana E, Viganò P, Benaglia L, *et al.*: **Adhesion prevention in endometriosis: a neglected critical challenge.** *J Minim Invasive Gynecol.* 2012; **19**(4): 415–421.  
[PubMed Abstract](#) | [Publisher Full Text](#)
  15. Viganò P, Candiani M, Monno A, *et al.*: **Time to redefine endometriosis including its pro-fibrotic nature.** *Hum Reprod Oxf Engl.* 2018 Mar 1; **33**(3): 347–352.  
[PubMed Abstract](#) | [Publisher Full Text](#)
  16. Yang H, Kang K, Cheng C, *et al.*: **Integrative Analysis Reveals Regulatory Programs in Endometriosis.** *Reprod Sci.* 2015 Sep 1; **22**(9): 1060–1072.  
[PubMed Abstract](#) | [Publisher Full Text](#) | [Free Full Text](#)
  17. Ahn SH, Monsanto SP, Miller C, *et al.*: **Pathophysiology and Immune Dysfunction in Endometriosis.** *Biomed Res Int.* 2015; **2015**: 795976.
  18. Herington JL, Bruner-Tran KL, Lucas JA, *et al.*: **Immune interactions in endometriosis.** *Expert Rev Clin Immunol.* 2011 Sep; **7**(5): 611–626.  
[PubMed Abstract](#) | [Publisher Full Text](#) | [Free Full Text](#)
  19. Czyzyk A, Podfigurna A, Szeliga A, *et al.*: **Update on endometriosis pathogenesis.** *Minerva Ginecol.* 2017 Oct; **69**(5): 447–461.  
[PubMed Abstract](#) | [Publisher Full Text](#)
  20. Balasubramanian V, Saravanan R, Joseph LD, *et al.*: **Molecular dysregulations underlying the pathogenesis of endometriosis.** *Cell Signal.* 2021 Dec; **88**: 110139.  
[PubMed Abstract](#) | [Publisher Full Text](#)
  21. Laudanski P, Szamatowicz J, Ramel P: **Matrix metalloproteinase-13 and membrane type-1 matrix metalloproteinase in peritoneal fluid of women with endometriosis.** *Gynecol Endocrinol Off J Int Soc Gynecol Endocrinol.* 2005 Aug; **21**(2): 106–110.  
[PubMed Abstract](#) | [Publisher Full Text](#)
  22. Laudanski P, Charkiewicz R, Kuzmicki M, *et al.*: **Profiling of selected angiogenesis-related genes in proliferative eutopic endometrium of women with endometriosis.** *Eur J Obstet Gynecol Reprod Biol.* 2014 Jan; **172**: 85–92.  
[PubMed Abstract](#) | [Publisher Full Text](#)
  23. Garcia Garcia JM, Vannuzzi V, Donati C, *et al.*: **Endometriosis: Cellular and Molecular Mechanisms Leading to Fibrosis.** *Reprod Sci Thousand Oaks Calif.* 2023 May; **30**(5): 1453–1461.  
[PubMed Abstract](#) | [Publisher Full Text](#) | [Free Full Text](#)
  24. Koninckx PR, Fernandes R, Ussia A, *et al.*: **Pathogenesis Based Diagnosis and Treatment of Endometriosis.** *Front Endocrinol.* 2021; **12**: 745548.  
[PubMed Abstract](#) | [Publisher Full Text](#) | [Free Full Text](#)
  25. Molina M, Moreno GA, Singh R, *et al.*: **Rectovaginal endometriosis with nodular smooth muscle metaplasia diagnosed via transrectal ultrasound-guided fine-needle aspiration cytology: An underused minimally invasive diagnostic technique?** *Diagn Cytopathol.* 2023 Oct; **51**(10): E273–E278.  
[PubMed Abstract](#) | [Publisher Full Text](#)
  26. Muzil L, Bianchi A, Bellati F, *et al.*: **Histologic analysis of endometriomas: what the surgeon needs to know.** *Fertil Steril.* 2007 Feb; **87**(2): 362–366.  
[PubMed Abstract](#) | [Publisher Full Text](#)
  27. Meng XM, Nikolic-Paterson DJ, Lan HY: **TGF- $\beta$ : the master regulator of fibrosis.** *Nat Rev Nephrol.* 2016 Jun; **12**(6): 325–338.  
[Publisher Full Text](#)
  28. Soni UK, Chadchan SB, Kumar V, *et al.*: **A high level of TGF- $\beta$ 1 promotes endometriosis development via cell migration, adhesiveness, colonization, and invasiveness.** *Biol Reprod.* 2019 Apr 1; **100**(4): 917–938.  
[PubMed Abstract](#) | [Publisher Full Text](#)
  29. Tarokh M, Ghaffari Novin M, Poordast T, *et al.*: **Serum and Peritoneal Fluid Cytokine Profiles in Infertile Women with Endometriosis.** *Iran J Immunol IJI.* 2019 Jun; **16**(2): 151–162.  
[PubMed Abstract](#) | [Publisher Full Text](#)
  30. Scutiero G, Iannone P, Bernardi G, *et al.*: **Oxidative Stress and Endometriosis: A Systematic Review of the Literature.** *Oxidative Med Cell Longev.* 2017; **2017**: 7265238.
  31. Zhang Q, Duan J, Olson M, *et al.*: **Cellular Changes Consistent With Epithelial-Mesenchymal Transition and Fibroblast-to-Myofibroblast Transdifferentiation in the Progression of Experimental Endometriosis in Baboons.** *Reprod Sci Thousand Oaks Calif.* 2016 Oct; **23**(10): 1409–1421.  
[PubMed Abstract](#) | [Publisher Full Text](#) | [Free Full Text](#)
  32. De Graaff AA, Dirksen CD, Simoens S, *et al.*: **Quality of life outcomes in women with endometriosis are highly influenced by recruitment strategies.** *Hum Reprod Oxf Engl.* 2015 Jun; **30**(6): 1331–1341.  
[PubMed Abstract](#) | [Publisher Full Text](#)
  33. Asante A, Taylor RN: **Endometriosis: the role of neuroangiogenesis.** *Annu Rev Physiol.* 2011; **73**: 163–182.  
[PubMed Abstract](#) | [Publisher Full Text](#)
  34. Henderson NC, Rieder F, Wynn TA: **Fibrosis: from mechanisms to medicines.** *Nature.* 2020 Nov; **587**(7835): 555–566.  
[PubMed Abstract](#) | [Publisher Full Text](#) | [Free Full Text](#)
  35. Thiery JP, Acloque H, Huang RYJ, *et al.*: **Epithelial-mesenchymal transitions in development and disease.** *Cell.* 2009 Nov 25; **139**(5): 871–890.  
[Publisher Full Text](#)
  36. Itoga T, Matsumoto T, Takeuchi H, *et al.*: **Fibrosis and smooth muscle metaplasia in rectovaginal endometriosis.** *Pathol Int.* 2003 Jun; **53**(6): 371–375.  
[PubMed Abstract](#) | [Publisher Full Text](#)
  37. Laschke MW, Menger MD: **Basic mechanisms of vascularization in endometriosis and their clinical implications.** *Hum Reprod Update.* 2018 Mar 1; **24**(2): 207–224.  
[PubMed Abstract](#) | [Publisher Full Text](#)
  38. Zhang Q, Duan J, Liu X, *et al.*: **Platelets drive smooth muscle metaplasia and fibrogenesis in endometriosis through epithelial-mesenchymal transition and fibroblast-to-myofibroblast transdifferentiation.** *Mol Cell Endocrinol.* 2016 Jun 15; **428**: 1–16.  
[PubMed Abstract](#) | [Publisher Full Text](#)
  39. Yang J, Weinberg RA: **Epithelial-mesenchymal transition: at the crossroads of development and tumor metastasis.** *Dev Cell.* 2008 Jun; **14**(6): 818–829.  
[PubMed Abstract](#) | [Publisher Full Text](#)
  40. Owusu-Akyaw A, Krishnamoorthy K, Goldsmith LT, *et al.*: **The role of mesenchymal-epithelial transition in endometrial function.** *Hum Reprod Update.* 2019 Jan 1; **25**(1): 114–133.  
[PubMed Abstract](#) | [Publisher Full Text](#)
  41. Kusama K, Fukushima Y, Yoshida K, *et al.*: **PGE2 and Thrombin Induce Myofibroblast Transdifferentiation via Activin A and CTGF in Endometrial Stromal Cells.** *Endocrinology.* 2021 Dec 1; **162**(12): bqab207.  
[PubMed Abstract](#) | [Publisher Full Text](#)
  42. Proestling K, Birner P, Gamperl S, *et al.*: **Enhanced epithelial to mesenchymal transition (EMT) and upregulated MYC in ectopic lesions contribute independently to endometriosis.** *Reprod Biol Endocrinol RBE.* 2015 Jul 22; **13**: 75.  
[PubMed Abstract](#) | [Publisher Full Text](#) | [Free Full Text](#)
  43. Mishra A, Galvankar M, Vaidya S, *et al.*: **Mouse model for endometriosis is characterized by proliferation and inflammation but not epithelial-to-mesenchymal transition and fibrosis.** *J Biosci.* 2020; **45**: 105.  
[Publisher Full Text](#)
  44. Wibisono H, Nakamura K, Taniguchi F, *et al.*: **Tracing location by applying Emerald luciferase in an early phase of murine endometriotic lesion formation.** *Exp Anim.* 2022 May 20; **71**(2): 184–192.  
[PubMed Abstract](#) | [Publisher Full Text](#) | [Free Full Text](#)
  45. García-Gómez E, Vázquez-Martínez ER, Reyes-Mayoral C, *et al.*: **Regulation of Inflammation Pathways and Inflammasome by Sex Steroid Hormones in Endometriosis.** *Front Endocrinol.* 2019; **10**: 935.
  46. Miller JE, Monsanto SP, Ahn SH, *et al.*: **Interleukin-33 modulates inflammation in endometriosis.** *Sci Rep.* 2017 Dec 20; **7**(1): 17903.  
[PubMed Abstract](#) | [Publisher Full Text](#) | [Free Full Text](#)
  47. Giacomini E, Minetto S, Li Piani L, *et al.*: **Genetics and Inflammation in Endometriosis: Improving Knowledge for Development of New Pharmacological Strategies.** *Int J Mol Sci.* 2021 Aug 21; **22**(16): 9033.  
[PubMed Abstract](#) | [Publisher Full Text](#) | [Free Full Text](#)
  48. Cordaro M, Trovato Salinaro A, Siracusa R, *et al.*: **Hidro<sup>®</sup> and Endometriosis: Biochemical Evaluation of Oxidative Stress and Pain.** *Antioxidants.* 2021 May 4; **10**(5): 720.  
[PubMed Abstract](#) | [Publisher Full Text](#) | [Free Full Text](#)
  49. Lu H, Hu H, Yang Y, *et al.*: **The inhibition of reactive oxygen species (ROS) by antioxidants inhibits the release of an autophagy marker in ectopic endometrial cells.** *Taiwan J Obstet Gynecol.* 2020 Mar; **59**(2): 256–261.  
[PubMed Abstract](#) | [Publisher Full Text](#)
  50. Greaves E, Cousins FL, Murray A, *et al.*: **A novel mouse model of endometriosis mimics human phenotype and reveals insights into the inflammatory contribution of shed endometrium.** *Am J Pathol.* 2014 Jul; **184**(7): 1930–1939.  
[PubMed Abstract](#) | [Publisher Full Text](#) | [Free Full Text](#)
  51. Tanbo T, Fedorcsak P: **Endometriosis-associated infertility: aspects of pathophysiological mechanisms and treatment options.** *Acta Obstet Gynecol Scand.* 2017 Jun; **96**(6): 659–667.  
[PubMed Abstract](#) | [Publisher Full Text](#)



52. Perrone U, Evangelisti G, Laganà AS, *et al.*: **A review of phase II and III drugs for the treatment and management of endometriosis.** *Expert Opin Emerg Drugs.* 2023 Dec; **28**(4): 333–351.  
[PubMed Abstract](#) | [Publisher Full Text](#)
53. Fan H: **In-vitro models of human endometriosis.** *Exp Ther Med.* 2020 Mar; **19**(3): 1617–1625.  
[PubMed Abstract](#) | [Publisher Full Text](#)
54. Bruner-Tran KL, Eisenberg E, Yeaman GR, *et al.*: **Steroid and cytokine regulation of matrix metalloproteinase expression in endometriosis and the establishment of experimental endometriosis in nude mice.** *J Clin Endocrinol Metab.* 2002 Oct; **87**(10): 4782–4791.  
[PubMed Abstract](#) | [Publisher Full Text](#)
55. D'Hooghe TM, Debrock S, Hill JA, *et al.*: **Endometriosis and subfertility: is the relationship resolved?** *Semin Reprod Med.* 2003 May; **21**(2): 243–254.  
[PubMed Abstract](#) | [Publisher Full Text](#)
56. Chiorean DM, Mitranovici MI, Toru HS, *et al.*: **New Insights into Genetics of Endometriosis-A Comprehensive Literature Review.** *Diagn Basel Switz.* 2023 Jul 4; **13**(13): 2265.  
[Publisher Full Text](#)
57. Abramiuk M, Grywalska E, Małkowska P, *et al.*: **The Role of the Immune System in the Development of Endometriosis.** *Cells.* 2022 Jun 25; **11**(13): 2028.  
[PubMed Abstract](#) | [Publisher Full Text](#) | [Free Full Text](#)
58. Zhang Y, Ma NY: **Environmental Risk Factors for Endometriosis: An Umbrella Review of a Meta-Analysis of 354 Observational Studies With Over 5 Million Populations.** *Front Med.* 2021; **8**: 680833.  
[PubMed Abstract](#) | [Publisher Full Text](#) | [Free Full Text](#)
59. Coiplet E, Courbiere B, Agostini A, *et al.*: **Endometriosis and environmental factors: A critical review.** *J Gynecol Obstet Hum Reprod.* 2022 Sep; **51**(7): 102418.  
[PubMed Abstract](#) | [Publisher Full Text](#)
60. Zhang Y, He T, Lin T, *et al.*: **Novel in vivo endometriotic models associated eutopic endometrium by implanting menstrual blood-derived stromal cells from patients with endometriosis.** *Sci Rep.* 2023 May 23; **13**(1): 8347.  
[PubMed Abstract](#) | [Publisher Full Text](#) | [Free Full Text](#)
61. Mori T, Ito F, Koshiba A, *et al.*: **Local estrogen formation and its regulation in endometriosis.** *Reprod Med Biol.* 2019 Oct; **18**(4): 305–311.  
[PubMed Abstract](#) | [Publisher Full Text](#) | [Free Full Text](#)
62. Becker CM, Gattrell WT, Gude K, *et al.*: **Reevaluating response and failure of medical treatment of endometriosis: a systematic review.** *Fertil Steril.* 2017 Jul; **108**(1): 125–136.  
[PubMed Abstract](#) | [Publisher Full Text](#) | [Free Full Text](#)
63. Fazleabas A: **Models of Endometriosis: Animal Models II - Non-Human Primates.** *Endometriosis: Science and Practice.* 2012; pp. 285–291.  
[Publisher Full Text](#)
64. Hastings JM, Fazleabas AT: **A baboon model for endometriosis: implications for fertility.** *Reprod Biol Endocrinol RBE.* 2006; **4**(Suppl 1): 57.  
[Publisher Full Text](#)
65. Kyama CM, Mihalyi A, Chai D, *et al.*: **Baboon model for the study of endometriosis.** *Womens Health Lond Engl.* 2007 Sep; **3**(5): 637–646.  
[PubMed Abstract](#) | [Publisher Full Text](#)
66. Dehoux JP, Defrère S, Squifflet J, *et al.*: **Is the baboon model appropriate for endometriosis studies?** *Fertil Steril.* 2011 Sep; **96**(3): 728–733.e3.  
[PubMed Abstract](#) | [Publisher Full Text](#)
67. Zondervan K, Cardon L, Desrosiers R, *et al.*: **The genetic epidemiology of spontaneous endometriosis in the rhesus monkey.** *Ann N Y Acad Sci.* 2002 Mar; **955**: 233–238. discussion 293-295, 396–406.  
[PubMed Abstract](#) | [Publisher Full Text](#)
68. Wilson RC, Link JM, Lee YZ, *et al.*: **Uterine Uptake of Estrogen and Progesterone-Based Radiotracers in Rhesus Macaques with Endometriosis.** *Mol Imaging Biol.* 2024 Apr; **26**(2): 334–343.  
[PubMed Abstract](#) | [Publisher Full Text](#) | [Free Full Text](#)
69. Nishimoto-Kakiuchi A, Netsu S, Matsuo S, *et al.*: **Characteristics of histologically confirmed endometriosis in cynomolgus monkeys.** *Hum Reprod Oxf Engl.* 2016 Oct; **31**(10): 2352–2359.  
[PubMed Abstract](#) | [Publisher Full Text](#) | [Free Full Text](#)
70. Hayashi K, Nakayama M, Iwatani C, *et al.*: **The Natural History of Spontaneously Occurred Endometriosis in Cynomolgus Monkeys by Monthly Follow-Up Laparoscopy for Two Years.** *Tohoku J Exp Med.* 2020 Aug; **251**(4): 241–253.  
[PubMed Abstract](#) | [Publisher Full Text](#)
71. Grimm D: **US labs using a record number of monkeys.** *Science.* 2018 Nov 9; **362**(6415): 630.  
[Publisher Full Text](#)
72. Pullen N, Birch CL, Douglas GJ, *et al.*: **The translational challenge in the development of new and effective therapies for endometriosis: a review of confidence from published preclinical efficacy studies.** *Hum Reprod Update.* 2011; **17**(6): 791–802.  
[PubMed Abstract](#) | [Publisher Full Text](#)
73. Dorrning A, Dhimi P, Panir K, *et al.*: **Bioluminescent imaging in induced mouse models of endometriosis reveals differences in four model variations.** *Dis Model Mech.* 2021 Aug; **14**(8): dmm049070.  
[PubMed Abstract](#) | [Publisher Full Text](#) | [Free Full Text](#)
74. Bruner-Tran KL, Mokshagundam S, Herington JL, *et al.*: **Rodent Models of Experimental Endometriosis: Identifying Mechanisms of Disease and Therapeutic Targets.** *Curr Womens Health Rev.* 2018 Jun; **14**(2): 173–188.  
[PubMed Abstract](#) | [Publisher Full Text](#) | [Free Full Text](#)
75. Fortin M, Lépine M, Pagé M, *et al.*: **An improved mouse model for endometriosis allows noninvasive assessment of lesion implantation and development.** *Fertil Steril.* 2003 Sep; **80** Suppl 2: 832–838.  
[PubMed Abstract](#) | [Publisher Full Text](#)
76. Lee B, Du H, Taylor HS: **Experimental murine endometriosis induces DNA methylation and altered gene expression in eutopic endometrium.** *Biol Reprod.* 2009 Jan; **80**(1): 79–85.  
[PubMed Abstract](#) | [Publisher Full Text](#) | [Free Full Text](#)
77. Burns KA, Rodriguez KF, Hewitt SC, *et al.*: **Role of estrogen receptor signaling required for endometriosis-like lesion establishment in a mouse model.** *Endocrinology.* 2012 Aug; **153**(8): 3960–3971.  
[PubMed Abstract](#) | [Publisher Full Text](#) | [Free Full Text](#)
78. Forster R, Sarginson A, Velichkova A, *et al.*: **Macrophage-derived insulin-like growth factor-1 is a key neurotrophic and nerve-sensitizing factor in pain associated with endometriosis.** *FASEB J Off Publ Fed Am Soc Exp Biol.* 2019 Oct; **33**(10): 11210–11222.  
[Publisher Full Text](#)
79. Perrin S: **Preclinical research: Make mouse studies work.** *Nature.* 2014 Mar 27; **507**(7493): 423–425.  
[Publisher Full Text](#)
80. Flores I, Rivera E, Ruiz LA, *et al.*: **Molecular profiling of experimental endometriosis identified gene expression patterns in common with human disease.** *Fertil Steril.* 2007 May; **87**(5): 1180–1199.  
[PubMed Abstract](#) | [Publisher Full Text](#) | [Free Full Text](#)
81. Konno R, Fujiwara H, Netsu S, *et al.*: **Gene expression profiling of the rat endometriosis model.** *Am J Reprod Immunol N Y N 1989.* 2007 Oct; **58**(4): 330–343.  
[Publisher Full Text](#)
82. Umezawa M, Sakata C, Tanaka N, *et al.*: **Cytokine and chemokine expression in a rat endometriosis is similar to that in human endometriosis.** *Cytokine.* 2008 Aug; **43**(2): 105–109.  
[PubMed Abstract](#) | [Publisher Full Text](#)
83. He Y, Liang B, Hung SW, *et al.*: **Re-evaluation of mouse models of endometriosis for pathological and immunological research.** *Front Immunol.* 2022; **13**: 986202.  
[PubMed Abstract](#) | [Publisher Full Text](#) | [Free Full Text](#)
84. Greaves E, Rosser M, Saunders PTK: **Endometriosis-Associated Pain - Do Preclinical Rodent Models Provide a Good Platform for Translation?** *Adv Anat Embryol Cell Biol.* 2020; **232**: 25–55.  
[PubMed Abstract](#) | [Publisher Full Text](#)
85. Jeon SY, Hwang KA, Choi KC: **Effect of steroid hormones, estrogen and progesterone, on epithelial mesenchymal transition in ovarian cancer development.** *J Steroid Biochem Mol Biol.* 2016 Apr; **158**: 1–8.  
[PubMed Abstract](#) | [Publisher Full Text](#)
86. Chen YJ, Li HY, Huang CH, *et al.*: **Oestrogen-induced epithelial-mesenchymal transition of endometrial epithelial cells contributes to the development of adenomyosis.** *J Pathol.* 2010 Nov; **222**(3): 261–270.  
[PubMed Abstract](#) | [Publisher Full Text](#)
87. Xu X, Wang J, Guo X, *et al.*: **GPR30-mediated non-classic estrogen pathway in mast cells participates in endometriosis pain via the production of FGF2.** *Front Immunol.* 2023; **14**: 1106771.  
[PubMed Abstract](#) | [Publisher Full Text](#) | [Free Full Text](#)
88. Park S, Ham J, Yang C, *et al.*: **Melatonin inhibits endometriosis development by disrupting mitochondrial function and regulating tRNAs.** *J Pineal Res.* 2023 Jan; **74**(1): e12842.  
[PubMed Abstract](#) | [Publisher Full Text](#)
89. Zhu S, Chen Q, Sun J, *et al.*: **The cGAS-STING pathway promotes endometriosis by up-regulating autophagy.** *Int Immunopharmacol.* 2023 Apr; **117**: 109644.  
[PubMed Abstract](#) | [Publisher Full Text](#)
90. Kiani K, Movahedin M, Malekafzali H, *et al.*: **Effect of the estrus cycle stage on the establishment of murine endometriosis lesions.** *Int J Reprod Biomed.* 2018 May; **16**(5): 305–314.  
[PubMed Abstract](#) | [Publisher Full Text](#)



91. Leberman DA, Spiegel S: **Thematic Review Series: Sphingolipids. Cross-talk at the crossroads of sphingosine-1-phosphate, growth factors, and cytokine signaling.** *J Lipid Res.* 2008 Jul; **49**(7): 1388–1394.  
[PubMed Abstract](#) | [Publisher Full Text](#) | [Free Full Text](#)
92. González-Ramos R, Van Langendonck A, Defrère S, et al.: **Involvement of the nuclear factor- $\kappa$ B pathway in the pathogenesis of endometriosis.** *Fertil Steril.* 2010 Nov; **94**(6): 1985–1994.  
[PubMed Abstract](#) | [Publisher Full Text](#)
93. Matsuzaki S, Darcha C: **Involvement of the Wnt/ $\beta$ -catenin signaling pathway in the cellular and molecular mechanisms of fibrosis in endometriosis.** *PLoS One.* 2013; **8**(10): e76808.  
[PubMed Abstract](#) | [Publisher Full Text](#) | [Free Full Text](#)
94. Au HK, Chang JH, Wu YC, et al.: **TGF- $\beta$ I Regulates Cell Migration through Pluripotent Transcription Factor OCT4 in Endometriosis.** *PLoS One.* 2015 Dec 16; **10**(12): e0145256.  
[PubMed Abstract](#) | [Publisher Full Text](#) | [Free Full Text](#)
95. Matsuzaki S, Darcha C: **Co-operation between the AKT and ERK signaling pathways may support growth of deep endometriosis in a fibrotic microenvironment in vitro.** *Hum Reprod Oxf Engl.* 2015 Jul; **30**(7): 1606–1616.  
[PubMed Abstract](#) | [Publisher Full Text](#)
96. Zhang Q, Liu X, Guo SW: **Progressive development of endometriosis and its hindrance by anti-platelet treatment in mice with induced endometriosis.** *Reprod Biomed Online.* 2017 Feb; **34**(2): 124–136.  
[PubMed Abstract](#) | [Publisher Full Text](#)
97. Shi LB, Zhou F, Zhu HY, et al.: **Transforming growth factor beta1 from endometriomas promotes fibrosis in surrounding ovarian tissues via Smad2/3 signaling.** *Biol Reprod.* 2017 Jan 1; **97**(6): 873–882.  
[PubMed Abstract](#) | [Publisher Full Text](#)
98. González-Foruria I, Santulli P, Chouzenoux S, et al.: **Dysregulation of the ADAM17/Notch signalling pathways in endometriosis: from oxidative stress to fibrosis.** *Mol Hum Reprod.* 2017 Jul 1; **23**(7): 488–499.  
[PubMed Abstract](#) | [Publisher Full Text](#)
99. Shao X, Wei X: **FOXP1 enhances fibrosis via activating Wnt/ $\beta$ -catenin signaling pathway in endometriosis.** *Am J Transl Res.* 2018; **10**(11): 3610–3618.  
[PubMed Abstract](#)
100. Guo S: **Cancer driver mutations in endometriosis: Variations on the major theme of fibrogenesis.** *Reprod Med Biol.* 2018 Aug 16; **17**(4): 369–397.  
[PubMed Abstract](#) | [Publisher Full Text](#) | [Free Full Text](#)
101. Yan D, Liu X, Xu H, et al.: **Mesothelial Cells Participate in Endometriosis Fibrogenesis Through Platelet-Induced Mesothelial-Mesenchymal Transition.** *J Clin Endocrinol Metab.* 2020 Nov 1; **105**(11): e4124–e4147.  
[Publisher Full Text](#)
102. Yan D, Liu X, Xu H, et al.: **Platelets induce endothelial-mesenchymal transition and subsequent fibrogenesis in endometriosis.** *Reprod Biomed Online.* 2020 Sep; **41**(3): 500–517.  
[PubMed Abstract](#) | [Publisher Full Text](#)
103. Mohankumar K, Li X, Sung N, et al.: **Bis-Indole-Derived Nuclear Receptor 4A1 (NR4A1, Nur77) Ligands as Inhibitors of Endometriosis.** *Endocrinology.* 2020 Apr 1; **161**(4): bqaa027.  
[PubMed Abstract](#) | [Publisher Full Text](#) | [Free Full Text](#)
104. Mihara Y, Maekawa R, Sato S, et al.: **An Integrated Genomic Approach Identifies HOXC8 as an Upstream Regulator in Ovarian Endometrioma.** *J Clin Endocrinol Metab.* 2020 Dec 1; **105**(12): e4474–e4489.  
[Publisher Full Text](#)
105. Nagai T, Ishida C, Nakamura T, et al.: **Focal Adhesion Kinase-Mediated Sequences, Including Cell Adhesion, Inflammatory Response, and Fibrosis, as a Therapeutic Target in Endometriosis.** *Reprod Sci Thousand Oaks Calif.* 2020 Jul; **27**(7): 1400–1410.  
[PubMed Abstract](#) | [Publisher Full Text](#)
106. Nishimoto-Kakiuchi A, Sato I, Nakano K, et al.: **A long-acting anti-IL-8 antibody improves inflammation and fibrosis in endometriosis.** *Sci Transl Med.* 2023 Feb 22; **15**(684): eabq5858.  
[PubMed Abstract](#) | [Publisher Full Text](#)
107. Ke J, Ye J, Li M, et al.: **The Role of Matrix Metalloproteinases in Endometriosis: A Potential Target.** *Biomolecules.* 2021 Nov 22; **11**(11): 1739.  
[PubMed Abstract](#) | [Publisher Full Text](#) | [Free Full Text](#)
108. Protopapas A, Markaki S, Mitsis T, et al.: **Immunohistochemical expression of matrix metalloproteinases, their tissue inhibitors, and cathepsin-D in ovarian endometriosis: correlation with severity of disease.** *Fertil Steril.* 2010 Nov; **94**(6): 2470–2472.  
[PubMed Abstract](#) | [Publisher Full Text](#)
109. Sotnikova NY, Antsiferova YS, Posiseeva LV, et al.: **Mechanisms regulating invasiveness and growth of endometriosis lesions in rat experimental model and in humans.** *Fertil Steril.* 2010 May 15; **93**(8): 2701–2705.  
[PubMed Abstract](#) | [Publisher Full Text](#)
110. Rydlova M, Holubec L, Ludvikova M, et al.: **Biological activity and clinical implications of the matrix metalloproteinases.** *Anticancer Res.* 2008; **28**(2B): 1389–1397.  
[PubMed Abstract](#)
111. Wang J, Ma X: **Effects of estrogen and progesterone on expression of MMP-2 and TIMP-2 in a nude mouse model of endometriosis.** *Clin Exp Obstet Gynecol.* 2012; **39**(2): 229–233.  
[PubMed Abstract](#)
112. Chatterjee K, Jana S, DasMahapatra P, et al.: **EGFR-mediated matrix metalloproteinase-7 up-regulation promotes epithelial-mesenchymal transition via ERK1-AP1 axis during ovarian endometriosis progression.** *FASEB J Off Publ Fed Am Soc Exp Biol.* 2018 Aug; **32**(8): 4560–4572.  
[Publisher Full Text](#)
113. Liu F, Zhou J, Zhang X, et al.: **Whole-exome sequencing and functional validation reveal a rare missense variant in MMP7 that confers ovarian endometriosis risk.** *Hum Mol Genet.* 2022 Aug 17; **31**(15): 2595–2605.  
[PubMed Abstract](#) | [Publisher Full Text](#)
114. Karamanou K, Franchi M, Vynios D, et al.: **Epithelial-to-mesenchymal transition and invadopodia markers in breast cancer: Lumican a key regulator.** *Semin Cancer Biol.* 2020 May; **62**: 125–133.  
[PubMed Abstract](#) | [Publisher Full Text](#)
115. Xin L, Hou Q, Xiong QI, et al.: **Association between matrix metalloproteinase-2 and matrix metalloproteinase-9 polymorphisms and endometriosis: A systematic review and meta-analysis.** *Biomed Rep.* 2015 Jul; **3**(4): 559–565.  
[PubMed Abstract](#) | [Publisher Full Text](#) | [Free Full Text](#)
116. Orlichenko LS, Radisky DC: **Matrix metalloproteinases stimulate epithelial-mesenchymal transition during tumor development.** *Clin Exp Metastasis.* 2008; **25**(6): 593–600.  
[Publisher Full Text](#)
117. Ellis K, Munro D, Clarke J: **Endometriosis Is Undervalued: A Call to Action.** *Front Glob Womens Health.* 2022 May 10; **3**: 902371.  
[PubMed Abstract](#) | [Publisher Full Text](#) | [Free Full Text](#)
118. Penrod N, Okeh C, Velez Edwards DR, et al.: **Leveraging electronic health record data for endometriosis research.** *Front Digit Health.* 2023; **5**: 1150687.  
[PubMed Abstract](#) | [Publisher Full Text](#) | [Free Full Text](#)
119. Kimmelman J, Federico C: **Consider drug efficacy before first-in-human trials.** *Nature.* 2017 Jan 30; **542**(7639): 25–27.  
[Publisher Full Text](#)
120. Cousins FL, Kirkwood PM, Murray AA, et al.: **Androgens regulate scarless repair of the endometrial “wound” in a mouse model of menstruation.** *FASEB J Off Publ Fed Am Soc Exp Biol.* 2016 Aug; **30**(8): 2802–2811.  
[Publisher Full Text](#)
121. Li X, Zhu L, Wang B, et al.: **Drugs and Targets in Fibrosis.** *Front Pharmacol.* 2017; **8**: 855.  
[PubMed Abstract](#) | [Publisher Full Text](#) | [Free Full Text](#)

# Open Peer Review

Current Peer Review Status:  

Version 2

Reviewer Report 12 November 2024

<https://doi.org/10.5256/f1000research.171658.r332392>

© 2024 Fazleabas A et al. This is an open access peer review report distributed under the terms of the [Creative Commons Attribution License](#), which permits unrestricted use, distribution, and reproduction in any medium, provided the original work is properly cited.



**Asgerally T Fazleabas**

Michigan State University, Grand Rapids, MI, USA

**Yong Song**

Michigan State University, East Lansing, Michigan, USA

This review, titled "Unveiling the Fibrotic Puzzle of Endometriosis: An Overlooked Concern Calling for Prompt Action," addresses the role of fibrosis in endometriosis and highlights the need for improved animal models to study this aspect of the disease. While the topic is important there are significant omissions that do not make this a comprehensive review as the authors claim.

The specific comments are as follows:

1. In the Introduction: The sentences, "*Retrograde menstruation is prevalent in healthy women, and only a small population of women develop this condition, contributing to the understanding of complex mechanisms that underlie the onset of this challenging condition. While 90% of women of reproductive age undergo retrograde menstruation to the pelvic cavity, only 10% of them develop endometriosis. These findings suggest that the onset and progression of the disease in the peritoneal cavity depend on additional relevant factors.*" contain duplicative statements. These could be streamlined to improve the clarity.
2. Section "Endometriotic Models: Importance of Addressing Gaps in Preclinical Animal Models": The preclinical animal models include both rodent and nonhuman primate models, but only rodent models were discussed. Including nonhuman primate models here would provide a more complete overview.
3. Section "Primate Model of Endometriosis": This section only discusses spontaneous endometriosis. It would be beneficial to include surgically induced endometriosis models in non-human primates, particularly the baboon model, which is valuable for simulating disease establishment and progression. Discussing the surgically induced non-human primate model with respect to fibrosis would add depth to this section.
4. Although the mouse model does not fully capture the fibrosis characteristics seen in human endometriotic lesions, it remains essential for exploring fibrosis' mechanisms and therapeutic approaches. This model has been valuable for studying the role of inflammation in fibrosis development and developing the methods that detect endometriotic lesions. A

more detailed classification of endometriotic fibrotic rodent models in Table 1 would also strengthen this discussion.

5. Section "Human Experiment Details": The subtitle "Human Experiment Details" is misleading, as this section includes not only human studies but also rodent and non-human primate studies. Consider combining this section with "Interplay of EMT and MMPs in Endometriosis" into a summary of mechanisms contributing to fibrosis in endometriosis. While this section discusses several genes and pathways associated with fibrosis, a more in depth discussion of mechanisms, with specific examples of pathway interactions that promote fibrosis, would enhance the context of the manuscript.
6. The manuscript would benefit from a more detailed comparison of different animal models (non-human primates, mice, rats) and their individual strengths and weaknesses concerning fibrosis research in endometriosis. A table or figure summarizing this information could help readers better understand which models are suitable for addressing specific questions related to this pathology.
7. Table 1 References: Ensure that all references in Table 1 are accurate; for instance, Reference 99 does not involve any animal model.
8. The quality of Figure 2 is not good, and abbreviations should be written out in full in the figure legend for better readability.

**Is the topic of the review discussed comprehensively in the context of the current literature?**

Partly

**Are all factual statements correct and adequately supported by citations?**

Partly

**Is the review written in accessible language?**

Yes

**Are the conclusions drawn appropriate in the context of the current research literature?**

Partly

**Competing Interests:** No competing interests were disclosed.

**Reviewer Expertise:** Endometriosis

**We confirm that we have read this submission and believe that we have an appropriate level of expertise to state that we do not consider it to be of an acceptable scientific standard, for reasons outlined above.**

Author Response 18 Nov 2024

**Rahul Dutta**

Dear Prof Fazleabas

Accept our gratitude for your detailed critical inputs for improving our manuscript. We have attempted to incorporate most of the suggested changes in the current version of the M/S.

We have made changes to the tables and added new figures to improve the quality of review. We enlist the changes made in detail below. We once again, thank you for the opportunity to improve the work,

Reviewer comment:

1. In the Introduction: The sentences, "Retrograde menstruation is prevalent in healthy women, and only a small population of women develop this condition, contributing to the understanding of complex mechanisms that underlie the onset of this challenging condition. While 90% of women of reproductive age undergo retrograde menstruation to the pelvic cavity, only 10% of them develop endometriosis. These findings suggest that the onset and progression of the disease in the peritoneal cavity depend on additional relevant factors." contain duplicative statements. These could be streamlined to improve the clarity.

Author response: Despite retrograde menstruation occurring in 90% of reproductive-age women, only 10% develop endometriosis, indicating that additional relevant factors contribute to the disease's onset and progression within the peritoneal cavity. This disparity indicates complex networks contributing to the emergence of this challenging condition.

Reviewer comment:

1. Section "Endometriotic Models: Importance of Addressing Gaps in Preclinical Animal Models": The preclinical animal models include both rodent and nonhuman primate models, but only rodent models were discussed. Including nonhuman primate models here would provide a more complete overview.

Author response: The order of sub-sections should be changed here.

- Endometriotic models: Importance of addressing gaps in pre-clinical animal models
- Fibrotic endometriosis overview: knowledge gaps and challenges
- Primate model of endometriosis
- Limitations of non-human primate models in endometriosis research
- Rodent models of endometriosis
- Limitations of rodent models in endometriosis research
- Human experiment details
- Interplay of EMT and MMPs in endometriosis

Changes made:

Endometriotic models: Importance of addressing gaps in preclinical animal models

Added at the beginning,

Due to the unavailability of a definitive treatment and limited understanding of the disease, researchers attempted to develop animal models to provide insights into the disease's causes and to identify novel therapeutic targets. The most extensively studied animal models for endometriosis comprises autologous or syngeneic rodent models, xenotransplantation of human endometrial tissue into immunodeficient mice, and, to a lesser extent due to ethical considerations and expensive costs, nonhuman primate models (19). The most significant distinction between these models is that endometriosis develops spontaneously in non-human primates but not in rodents (19).

Figure and its legend changed here. (Figure is in PPT).

Figure 1: Schematic representation of key factors contributing to the development and progression of endometriosis. The illustration highlights the interplay between genetic factors, hormonal imbalances, immune dysfunction, inflammation, including lifestyle related and environmental factors. These factors collectively influence lesion establishment, persistence, growth, providing a comprehensive overview of the multifactorial nature of endometriosis pathophysiology (created with Biorender.com).

Added primate model details to the same section,

Taking into account all of these factors as well as possible limitations of rodents, researchers focused on non-human primates like baboons (*Papio anubis*) and rhesus monkeys because they spontaneously develop endometriosis and menstruate in a cyclic pattern. It's interesting to note that even in nonhuman primates, endometriosis that has been surgically induced reduced fertility, much like it does in humans. In fact, cynomolgus monkeys (*Macaca fascicularis*) with moderate or severe endometriosis have been shown to have lower rates of fertilization and pregnancy following surgery (31). In addition, subfertility due to endometriosis was tied with stage disease also in baboons (32). The work by Nishimoto-Kakiuchi et al., (33) presents novel and crucial insights from a non-human monkey for translational research in endometriosis where they carefully examined screening, diagnosis, staging, and monitoring in a population of cynomolgus monkeys. They proposed a robust methodology and which has the benefit to employing an animal model with lower body size instead of baboons, making easier for monitoring and handling in an experimental setting. But the major limitation here is the reduced incidence rate of endometriosis of only 28.7% (33). In this context, it appears that non-human primates might serve as the best model organisms in endometriosis research, taking into consideration the similarities to humans regarding phylogenetics, reproductive biology and anatomy, also the presence of spontaneous endometriosis which is identical to its humans (34,35). However, only in some species (*Papio anubis*) the menstrual periods are nearly every 4 weeks corresponding to that of humans. Indeed, diagnosis of the spontaneous disease in non-human primate models is problematic, as a large number of animals is necessary for the induction and there is a lack of accurate non-invasive tools for the early detection (36). In conclusion, even though non-human primate models are useful for studying the etiology, development, and progression of the disease as well as possibly evaluating the efficacy of drugs, more research is needed to confirm the effectiveness of the "biological response," correlating with endometriosis and its symptoms. This could lead to improved diagnostic accuracy and early detection in non-human primate models, which would be in line with the main goals of clinical endometriosis research in humans.

This paragraph was deleted. (Owing to differences in opinions concerning the etiology of the disease, the EMT route has received less attention in the context of endometriosis than it does in cancer research. Recently, most research on EMT in endometriosis has focused on tissues; very few studies have examined the specific transcription factors involved in EMT signaling that are present in endometriotic cells 35 , 36 EMT-related processes in endometriosis have been reported to be far more prevalent in ectopic endometrial lesions than in eutopic endometria, suggesting that EMT may contribute to the development of endometriosis. 37 For example, in fibrosis of organs such as the lungs, liver, and kidney, the involvement of the TGF- $\beta$  signaling pathway is well documented. 38 TGF- $\beta$  is an influential growth factor and a chemical that attracts monocytes and is capable of triggering fibrosis and angiogenesis during abnormal growth and promoting the progression of endometriosis. 39 Compared with those of normal women, the peritoneal fluid of stage III



and IV endometriosis patients has greater levels of TGF- $\beta$ . 40) and 27 Endometriosis research is mostly based on nonhuman primate or rodent models due to the apparent limitations and ethical concerns of human experimentation. The available mouse models have aided in investigating several aspects of the disorder, such as early disease phases, 41 steroid hormone involvement, 42 host inflammatory mechanisms, 43 , 44 oxidative stress, 45 , 46 neuroangiogenesis, 47 and infertility, 48 in mice.)

The last paragraph was changed to this.

In summary, we want to bring attention to the need for an optimal model for understanding endometriosis that mimics the cellular and pathophysiological processes and clinical behaviors observed in human patients, notably fibrosis coupled with invasion and metastasis. Despite these limitations, considerable improvements have been made in the development of endometriotic models for fibrosis-based research studies.

Reviewer comment:

1. Section "Primate Model of Endometriosis": This section only discusses spontaneous endometriosis. It would be beneficial to include surgically induced endometriosis models in non-human primates, particularly the baboon model, which is valuable for simulating disease establishment and progression. Discussing the surgically induced non-human primate model with respect to fibrosis would add depth to this section.

Author response:

Primate model of endometriosis and limitations (All the references are tagged in the original draft)

(Added this at the beginning). Endometriosis is challenging to eliminate due to the inadequate understanding of its genesis and pathophysiology. It is recognized to occur exclusively in menstrual animals, including nonhuman primates, such as rhesus macaques (Zondervan et al., 2014) and baboons (Dick et al., 2003), and has demonstrated significant relevance in the study of endometriosis. Because they undergo menstruation, they provide a phylogenetically similar model organism to humans. Their identical endometrial morphology, physiology, and menstrual cycle nearly identical to those of women (Dick et al., 2003). Baboons can also develop spontaneous endometriosis, which makes them one of the most suited and relevant models for investigating this disease (Nair et al., 2016).....

.....The cynomolgus monkey (71,72) has been described, with the limitations that deep lesions were difficult to diagnose and time course changes in the condition were not investigated. (Add the following details after this sentence). Two types of endometriotic models have been established in baboons: spontaneous (Fazleabas et al., 2002) and experimentally generated endometriosis via autologous endometrial transplantation (Afshar et al., 2013, Slayden, O. D. 2013) Moreover, induced endometriosis in nonhuman primates demonstrated has been shown to closely resemble spontaneous endometriosis developing in women (D'Hooghe et al., 1995). It was also claimed that iatrogenically induced retrograde menstruation might lead to the onset of endometriosis validating the concept of Sampson. In fact, endometriosis was experimentally generated in rhesus macaques via surgical diversion of cervix into the abdomen. Yet, endometriosis was identified in only 50% of the animals (Kennedy et al., 2019). The first baboon experimental model of nodular endometriosis was established in by Donnez et al., 2023 for the exploration of deeper nodular lesions as well as invasion events connected with nodular lesions (Donnez et al., 2013). Frequent surgical interventions, however, are shown to provoke the spontaneous growth of endometriotic lesions and could possibly modify the functionality of the

endometrium (Harirchian et al., 2012).

Regarding the fibrosis aspect of the disease, According to Zhang et al., a baboon endometriosis model demonstrated the progressive nature of EMT, FMT, and fibrosis. This led to the expansion of fibrosis from a minor fibrosis at three months to a highly fibrotic lesion at twelve months after endometriosis induction. This strongly suggests the progressive nature of the disease (Zhang et al., 2016b). Additionally, histological analyses reveal that fibrosis in baboon endometriosis closely mirrors that seen in human cases, making it an appropriate model for investigating disease progression and treatment influences on fibrosis (Giudice et al., 2012). Donnez et al., discovered altered morphology, elevated mitotic activity, and fewer adhesion molecules in invasive glands associated with induced nodular endometriosis implying that cell migration is involved in the process of invasion of deep fibrotic endometriotic lesions generated in a baboon model (Donnez et al., 2015). A model of iatrogenic deep nodular endometriotic lesions was developed in order to build an experimental model of replicating human deep nodular fibrotic lesions (Donnez et al., 2013). Deep nodular endometriotic lesions created in the baboon were shown to closely mirror spontaneous deep-infiltrating nodules in invasive and non-invasive lesions (Donnez et al., 2013, Orellana et al., 2017). A recent investigation in baboon models has increased the understanding of fibrosis in endometriosis. The study indicated the overexpression by IL-6 enhance the expression of fibrotic factors, inducing fibrosis via the TGF- $\beta$  signalling pathway. These findings in baboons, which closely match human endometriosis, reinforce the concept that fibrosis is a critical component of the disease's course (Ochoa Bernal et al., 2024).

Limitations of non-human primate models in endometriosis research

The use non-human primates in endometriosis research has potential drawbacks or limitations. First, the low incidence rate i.e., 4.8% and 20.7% of spontaneous and induced endometriosis, respectively demonstrating that baboons are able to cleanse and regenerate their peritoneum which may downgrade the significance of model (Dehoux et al., 2011). Other challenges include relatively small cohort of endometriotic animals for experimentation, difficulty of dealing with conscious baboons, and the high cost of experimentation and maintenance which require larger doses of medications, specialized infrastructure, logistics, and special training for handling these animals. It is also perceived to be ethically sensitive and expensive (Grummer, R. 2006, Slayden, O. D. 2013). Consequently, rodent models are commonly used for preclinical efficacy testing for therapeutic interventions due to their reduced costs and ease of handling.

Reviewer comment:

1. Although the mouse model does not fully capture the fibrosis characteristics seen in human endometriotic lesions, it remains essential for exploring fibrosis' mechanisms and therapeutic approaches. This model has been valuable for studying the role of inflammation in fibrosis development and developing the methods that detect endometriotic lesions. A more detailed classification of endometriotic fibrotic rodent models in Table 1 would also strengthen this discussion.

Author response:

(Major changes done in this section).

Preclinical modeling is crucial for investigations of disease pathogenesis, biomarker development, and preventative and therapeutic discovery. This is particularly true for complex conditions, such as endometriosis where non-surgical diagnostic techniques to

allow longitudinal clinical study designs remain unavailable. Rodents are frequently employed as a preclinical model in biomedical research since they are a molecularly well-annotated species. This permits researchers to utilize different interrogative strategies to dissect multifactorial disorders. Their usefulness for examining the molecular foundations of disease pathogenesis lies in the simplicity of genetic modifications and their ability to target potential genes for specialized study (70). Additionally, given the lack of accessibility and high costs related to non-human primates, rodents offer as a convenient and inexpensive alternative for researching the origins and course of disorders like endometriosis. However, because research facilities for primates/non-human are constrained, non-primate experimental animal species, such as mice or rats, are regarded suitable first-line tools for researching the origin of this puzzling disease. Endometriosis is characterized by the recurrent development of new lesions with each menstrual cycle and the advancement of preexisting lesions. Therefore, additional research is needed to understand the natural course and gradual development of endometriosis lesions (71). There is evidence of gradual lesion clearing, but only a small number of studies using mouse models of endometriosis have investigated disease induction and regression (71,72). While rodent models have been valuable for researching the disease, especially its pathophysiological and molecular underpinnings, gaps exist in understanding fibrotic lesion progression. Most importantly, due to the ethical limits of frequent laparoscopic screening of endometriotic patients, rodent models provide essential longitudinal investigations to boost the translational value of preclinical findings (71).

Mice are the most popular experimental animal models because of their ease of gene manipulation, availability, easy handling, tissue similarity in vivo, small size and large litter, which make them cost-effective, and their relatively short gestation, which allows transgenerational examination (22). Based on the available research publications, two types of mouse models have been successfully used to implant endometriotic lesions. The first approach involves suturing, where human endometriotic implants are surgically auto-transplanted into the peritoneum of immunocompromised mice (73–75). The second approach involves the intraperitoneal or subcutaneous implantation of autologous uterine segments into the peritoneum of recipient mice from a syngeneic donor (76–78). The mouse models have aided in investigating several aspects of the disorder, such as early disease phases (79) steroid hormone involvement (80), host inflammatory mechanisms (81,82), oxidative stress (83,84), neuroangiogenesis (76), and infertility (85). While these methods have enhanced our understanding of disease pathways, challenges persist. For example, Immunocompetence is a difficulty when employing human uterine tissue or human endometriotic tissue in a mouse model. Immunocompromised mice may not reflect the environment within the human peritoneal cavity, and the outcomes of the experiment may not correctly reflect disease onset (86). In ovariectomized mice models using exogenous estrogen, it was proven that estrogen reliance drives lesion progression in endometriosis; However, these models added surgical factors and off-target effects. Because endometriosis mirror natural hormonal cycles, hormonally intact mice offer a more realistic representation (75). However, mouse like other members of the rodent family, is typically do not menstruate and hence does not develop endometriosis spontaneously. They also have a closed reproductive system and are highly fragile with dietary needs. Consequently, earlier studies modeling endometriosis utilizing mice required stimulation of menstruation or endometrium transplantation for the development of endometriotic lesions (70). Hence, there are publications which claim that these lesions do not adequately mirror real

endometriosis as they lack features such as persistent fibrosis (87). On the other hand, rats can only produce superficial lesions, which are the most fundamental and possibly least clinically significant types of lesions. Many studies using rodents as a model for endometriosis have investigated the gene expression patterns of ectopic tissue deposits in rats in an attempt to correlate them with human endometriotic lesions. Chronic inflammation, angiogenesis, and extracellular matrix remodeling are common pathways (86–88). While some aspects of the disease are replicated in the rodent model, all the modifications involve suturing uterine fragments (endometrium plus myometrium) to different sites, which does not accurately represent the formation of lesions from those shed endometrial tissue or the dissemination of menstrual tissue into the peritoneum. Notably, particularly in terms of understanding its pathophysiology and treatment options, the current rodent models have not been successful in yielding findings that apply to human endometriosis. The inability of any study to recreate fibrotic endometriotic lesions may account for the failure of rat models to yield data relevant to the pathophysiology and treatment of human endometriosis. This situation demonstrates that the preclinical animal studies that have been established are not transferable (91). Therefore, fibrosis, a mostly disregarded component of human endometriosis, should be taken into consideration (90, 91). We reviewed the existing mouse models in the context of optimal parameters found on well-evidenced pathophysiologic aspects identified in endometriosis (Table 1). Collectively, these models have yielded critical insights and sustained advancement toward replicating the molecular characteristics of this disease. With completing knowledge gaps such as the modeling of chronic fibrosis, mouse models constitute a powerful resource for translational research in endometriosis. Therefore, developing novel rodent models that mirror the continuous fibrotic process observed in endometriotic patients is essential for improving our understanding of this disease. Emerging research has recently focused on the role that fibrosis plays in clinical-grade endometriosis. On the other hand, little is known about fibrosis treatment strategies. Therefore, developing a fibrotic mouse model of endometriosis, elucidating the regulatory processes underlying fibrosis in endometriosis, and identifying more precise specific biomarkers for this disease are critical. These markers can also be utilized to find effective therapeutic targets and identify endometriosis in its early phases. The successful translation of potential discoveries obtained in a preclinical model to human is primarily dependent on model fidelity. To mimic the fibrotic scarring observed in endometriosis, many endometriotic fibrotic animal models have been developed (Table 1).

(Deleted this). To mimic the fibrotic scarring observed in endometriosis, many endometriotic fibrotic animal models have been developed ( Table 1). Furthermore, new in vivo models that use stromal cells generated from menstrual blood have been created to study endometriosis; these models show enhanced endometriotic cell migration and proliferation. 58 Many cues, including estrogen stimulation, may trigger EMT. 88 Furthermore, estrogen-induced EMT in Ishikawa cells promotes adenomyosis. 89 However, how estrogen causes EMT in endometriosis at the molecular level remains unknown. To prevent fluctuations in mouse estradiol levels during the estrous cycle, the majority of established mouse models use ovariectomized mice. 90– 93 As a result, the steady availability of estradiol in the circulation may help promote lesion establishment and growth. However, research on how estrogen-induced EMT in endometriosis affects fertility, such as in women with normal circulating estrogen, is impossible. Therefore, studies of

endometriosis produced in intact mice call for more research on the connection between ectopic tissue and fertility.

These findings suggest potential targets for treatment to mitigate fibrosis. (Change this paragraph). Many of the current animal models of endometriosis can be further enhanced by altering them to allow non-invasive in vivo monitoring of lesion size as it is desirable for preclinical models of endometriosis. Although, studies have given insight on identifying genes that contribute to fibrosis in endometriosis, more exploration of the complicated signaling networks underlying the disease remains important. This gap points out the necessity for future investigations employing advanced methodologies such as knockout animal models, high-throughput RNA sequencing, and omics techniques. These techniques provide greater insights into the mechanisms of fibrotic markers and assist in confirming their function in endometriosis growth, providing strong evidence for the creation of medications that delay, terminate, and reverse fibrosis advancement and benefit endometriotic patients.

Table and the legend has been changed.

Table 1: Summary of available mice models of endometriosis, demonstrating the presence of fibrotic markers. The table includes details on the type of model, approach used for the model development, and the specific fibrotic markers and the pathways explored. This analysis emphasizes the heterogeneity in fibrotic marker expression across different models and provides insights into their relevance for researching the fibrotic elements of endometriosis. Alpha-smooth muscle actin ( $\alpha$ -SMA), connective tissue growth factor (CTGF), Fibronectin (FN), Transforming Growth Factor Beta (TGF- $\beta$ ), COL1A1 and A3 (Collagen type 1 and 3), epithelial-to-mesenchymal transition (EMT), fibroblast-to-myofibroblast transdifferentiation (FMT), and smooth muscle metaplasia (SMM), tumor necrosis factor  $\alpha$  (TNF $\alpha$ ) and the monocyte chemoattractant proteins chemokine ligands 2 and 5, Fibroblast-Specific Protein 1 (FSP1), S100 Calcium Binding Protein A4 (S100A4), TNF- $\alpha$  (Tumor Necrosis Factor-alpha) and IL-6 (Interleukin-6), Mesothelial-mesenchymal transition (MMT), and Endothelial-mesenchymal transition (EndoMT), Endometrium-derived mesenchymal stem cells (eMSCs), mammalian target of rapamycin (mTOR)

Added limitations

Limitations of rodent models in endometriosis research

Endometriosis is termed the 'missing disease' because of its ambiguous etiology and discrepancies in its origin, diagnosis and treatment (103). Despite a recent surge in endometriosis research, the underlying pathobiology of the disease remains poorly known, implying that animal models of the disorder are crucial for future studies in this field. This ambiguity highlights the need for animal models that precisely mimic human endometriosis and elucidate its conditions, which can provide a basis for subsequent research (104). One of the most significant obstacles in endometriosis research is the lack of reliable mouse models that characterize the manifestations of this condition in humans (105). Ideally, a disease model should mirror human disease while also allowing researchers to investigate the effects of intrinsic (e.g., genes) and extrinsic (e.g., environment) factors on disease progression. Many previous studies linked fibrosis secondary to the development of endometriosis, and there has not been much research on fibrosis itself (15,106). Research from animal models clearly revealed that a percentage of women receiving hormone therapy in human trials do not respond to these drugs (106) and require surgical lesion removal to alleviate symptoms. Women may have endometriotic lesions that have



progressed to a fibrotic state by the time they seek medical attention, rendering treatment ineffective. This highlights the urgent need for the establishment of an *in vivo* model that can effectively mimic the development and characteristics of human endometriosis, opening avenues for more effective treatments and a deeper understanding of this disease. These findings will also facilitate the understanding of the connection between the origin of fibrosis in endometriosis, existing medical care, and potential targets for therapy. In conclusion, although literature emphasizes the significance of fibrosis in the course of endometriosis, there remain gaps in understanding the underlying genes and pathways related to the fibrotic aspect of the disease. While the existing rodent models highlight certain factors such as inflammation and immune dysregulation, they often overlook fibrosis, thus poorly reflecting the complexity of the disease. In addition, these models insufficiently depict the degree of severity, traits, and drivers of fibrosis in clinical human endometriosis. Also, the complex interplay of signalling mechanisms that promote lesion formation in a fibrotic milieu remain inadequately studied. These limitations highlight the demand for improved fibrotic based animal models that accurately replicate the disease which offer an in-depth investigation of fibrotic pathways. Although, studies have given insight on identifying genes that contribute to fibrosis in endometriosis, more exploration of the complicated signaling networks underlying the disease remains important. This gap points out the necessity for future investigations employing advanced methodologies such as knockout animal models, high-throughput RNA sequencing, and omics techniques. These techniques provide greater insights into the mechanisms of fibrotic markers and assist in confirming their function in endometriosis growth, providing strong evidence for the creation of medications that delay, terminate, and reverse fibrosis advancement and benefit endometriotic patients. Also, many of the current animal models of endometriosis can be further enhanced by altering them to allow non-invasive *in vivo* monitoring of lesion size as it is desirable for preclinical models of endometriosis.

Reviewer comment:

1. Section "Human Experiment Details": The subtitle "Human Experiment Details" is misleading, as this section includes not only human studies but also rodent and non-human primate studies. Consider combining this section with "Interplay of EMT and MMPs in Endometriosis" into a summary of mechanisms contributing to fibrosis in endometriosis. While this section discusses several genes and pathways associated with fibrosis, a more in depth discussion of mechanisms, with specific examples of pathway interactions that promote fibrosis, would enhance the context of the manuscript.

Author response:

The content under human experiment details is completely changed.

Except for several non-human primates, animals do not develop endometriosis spontaneously and hence *in vitro* models employing human tissues have been employed to research the pathophysiology of this medical condition (Table 2). The majority of currently known *in vitro* models utilize a number of cell or tissues types, including endometriotic cell lines as the monolayer culture model, human primary endometrial epithelial and stromal cells, endometrial stem cells, endometrial explant culture, co-culture models with peritoneal cells and immune cells (107–109). Each model exhibits unique characteristics and functions and were able to illustrate one or more components of the process of endometriosis. These models are helpful and can be used to explore the origin of endometriosis and the

underlying mechanisms of this condition in depth, and assist investigators select relevant models for their research (21). In recent years, researchers developed different in vitro models of varying complexity that provide helpful tools to unravel processes involved in the etiology of endometriosis. Most cell culture methods are maintained in 2D settings; however, more advanced 3D models are becoming more prevalent to better the specific endometriosis milieu. They offer the chance to examine endometriotic cell connection with surrounding cells and analyze unique cross-talks between cells (107). The patient obtained tissues of ectopic and eutopic endometrium or biopsy samples from the endometriotic cysts and fluids from women with and without endometriosis undergoing laparoscopy for diverse research goals are being used. However, protocol variation employed for collecting, processing, and storing samples certainly restricts the compilation and repeatability of data produced in different research institutions

According to Fan 2020, except for studying the origin and mechanisms behind fibrosis in endometriosis, in vitro models are a viable tool to investigate therapeutic innovations for the management of endometriosis (21). The idea that endometriosis is a fibrotic disease has prompted studies to look into how myofibroblasts differentiation and how fibrosis develops in endometriotic lesions. This will lead to the development of new models that can be used to study endometriotic fibrosis. Thus, future studies should concentrate on the myofibroblasts differentiation and activity in endometriotic lesions. Advances in modeling in vitro technology could potentially revolutionize the study of endometriosis pathophysiology and allow the discovery of new targets to develop effective treatment approaches.

New table has been added and legend has been changed

Table 2: Overview of in vitro studies on endometriosis tissues demonstrating the presence of fibrotic markers. The table outlines the type of endometriosis tissue used, specific fibrotic markers evaluated, and key pathways. This compilation highlights the contributions of in vitro systems in unraveling the molecular mechanisms underlying fibrosis in endometriosis. OE- Ovarian endometrioma, DIE-Deep infiltrating endometriosis, Transforming Growth Factor  $\beta$ 1 (TGF- $\beta$ 1) Pathway, Platelet-Derived Growth Factor (PDGF) Pathway, Wnt/ $\beta$ -catenin Pathway,  $\alpha$ -SMA (alpha-Smooth Muscle Actin), COL1A1 (Collagen Type I Alpha 1 Chain), CTGF (Connective Tissue Growth Factor), FN (Fibronectin), rapamycin (mTOR) signaling, GLI3: GLI Family Zinc Finger 3, HOXC8, HOXA9 and A10: Homeobox C8 and A10, MAPK8: Mitogen-Activated Protein Kinase 8 (also known as JNK1), ETS2: ETS Proto-Oncogene 2, Transcription Factor, GATA2: GATA Binding Protein 2, FAK (Focal Adhesion Kinase), TFAP2C: Transcription Factor AP-2 Gamma, PRDM1: PR/SET Domain 1 (also known as BLIMP-1)

Reviewer comment:

1. The manuscript would benefit from a more detailed comparison of different animal models (non-human primates, mice, rats) and their individual strengths and weaknesses concerning fibrosis research in endometriosis. A table or figure summarizing this information could help readers better understand which models are suitable for addressing specific questions related to this pathology.

Author response:

Limitations was discussed in corresponding section

Figure 2 has been added for the comparison of primate, rodent and in vitro as suggested  
Figure 2: Schematic representation displaying the endometriotic lesion microenvironment and a comparative analysis of non-primate and non-human primate models, emphasizing their advantages and disadvantages in investigating endometriosis. This image shows the

importance of selecting appropriate models based on unique research objectives (Created with Biorender.com).

Reviewer comment:

1. Table 1 References: Ensure that all references in Table 1 are accurate; for instance, Reference 99 does not involve any animal model.

Author response:

Changed Table 1 with new references

Reviewer comment:

1. The quality of Figure 2 is not good, and abbreviations should be written out in full in the figure legend for better readability.

Author response:

Changed Figure 2

**Competing Interests:** We have no competing interests to disclose

Reviewer Report 12 October 2024

<https://doi.org/10.5256/f1000research.171658.r328656>

© 2024 Jeong J et al. This is an open access peer review report distributed under the terms of the [Creative Commons Attribution License](#), which permits unrestricted use, distribution, and reproduction in any medium, provided the original work is properly cited.



**Jae-Wook Jeong** 

University of Missouri, Columbia, Missouri, USA

**Md Saidur Rahman**

<sup>1</sup> University of Missouri, Columbia, Missouri, USA

<sup>2</sup> University of Missouri School of Medicine (Ringgold ID: 12271), Columbia, Missouri, USA

The authors have adequately addressed my concerns and the paper is improved accordingly.

**Is the topic of the review discussed comprehensively in the context of the current literature?**

Partly

**Are all factual statements correct and adequately supported by citations?**

Partly

**Is the review written in accessible language?**

Partly

**Are the conclusions drawn appropriate in the context of the current research literature?**

Partly

**Competing Interests:** No competing interests were disclosed.

**Reviewer Expertise:** Endometriosis; Translational study; Preclinical animal model

**We confirm that we have read this submission and believe that we have an appropriate level of expertise to confirm that it is of an acceptable scientific standard.**

Author Response 12 Oct 2024

**Rahul Dutta**

We are thankful to the reviewers for their constructive input. We thank the reviewers for approving the revised version of the manuscript.

**Competing Interests:** We have no non-financial or financial competing interests to disclose

## Version 1

Reviewer Report 22 August 2024

<https://doi.org/10.5256/f1000research.167117.r311329>

© 2024 Jeong J et al. This is an open access peer review report distributed under the terms of the [Creative Commons Attribution License](#), which permits unrestricted use, distribution, and reproduction in any medium, provided the original work is properly cited.



**Jae-Wook Jeong** 

<sup>1</sup> University of Missouri, Columbia, Missouri, USA

<sup>2</sup> University of Missouri, Columbia, Missouri, USA

**Md Saidur Rahman**

<sup>1</sup> University of Missouri, Columbia, Missouri, USA

<sup>2</sup> University of Missouri School of Medicine (Ringgold ID: 12271), Columbia, Missouri, USA

<sup>3</sup> University of Missouri, Columbia, Missouri, USA

<sup>4</sup> University of Missouri School of Medicine (Ringgold ID: 12271), Columbia, Missouri, USA

Overall Rating: Average

Reviewer Opinion: Major Revision

The manuscript effectively emphasizes the significance of understanding endometriosis-related fibrosis and the limitations of current treatments. It underscores the need for better models and addresses the challenges in understanding the disease's pathogenesis. However, the presentation would benefit from a more structured approach and a clearer focus on specific research gaps and proposed solutions. Adding details on how the review addresses these gaps and improves

therapeutic strategies would enhance its impact. While the review offers valuable insights into fibrotic models and treatments, greater clarity on its specific contributions is needed.

- Abstract: The abstract effectively outlines the importance of fibrosis research in endometriosis. Restructuring for clarity and adding specific research gaps and proposed solutions would strengthen overall outlook.
- Introduction:
  - Link to Fibrosis: The introduction does not clearly connect endometriosis issues to fibrosis. Adding specifics on how the review addresses this would improve its rationale.
  - Redundancy: The introduction repeats information on endometriosis mechanisms and diagnostic challenges. Reducing repetition would improve clarity.
- Literature Review:
  - Fibrotic Endometriosis Overview: The discussion on animal model limitations could be more focused. Highlighting specific shortcomings, especially in fibrosis and EMT representation, would provide clearer insights. There is a mouse model for endometriosis and fibrosis (PMID: 30626716).
  - Endometriotic Models: While the challenges of developing accurate models are discussed, more specific examples would be beneficial. Consider adding key limitations of rodent models and clarifying how estrogen-induced EMT impacts translation to human disease.
  - EMT and MMPs in Endometriosis: The discussion on MMPs and EMT lacks detailed mechanisms and direct evidence. Emphasizing experimental findings and strengthening the link between MMPs, EMT, and disease progression would improve this section.
- Discussion: While acknowledging the importance of translating research into clinical care, the section lacks concrete examples of how this might occur or what specific therapeutic advancements are expected.
- Conclusion: The call for longitudinal studies is important, but the section does not address the obstacles in conducting these studies.

Minor

Abstract: the first sentence: "estrogen-dependent" repeated word mesenchymal to epithelial transition (FMT) change to "MET"

**Is the topic of the review discussed comprehensively in the context of the current literature?**

Partly

**Are all factual statements correct and adequately supported by citations?**

Partly

**Is the review written in accessible language?**

Yes

**Are the conclusions drawn appropriate in the context of the current research literature?**

Partly



**Competing Interests:** No competing interests were disclosed.

**Reviewer Expertise:** Endometriosis; Translational study; Preclinical animal model

**We confirm that we have read this submission and believe that we have an appropriate level of expertise to state that we do not consider it to be of an acceptable scientific standard, for reasons outlined above.**

Author Response 16 Sep 2024

**Rahul Dutta**

Dear Mr. Reviewer,

We are thankful to you for the constructive feedback. We have incorporated the suggested improvement into the revised manuscript.

Here are the specific responses to the comments/suggestions-

**Abstract: The abstract effectively outlines the importance of fibrosis research in endometriosis. Restructuring for clarity and adding specific research gaps and proposed solutions would strengthen overall outlook.**

*The abstract has been modified as advised*

Introduction:

**Link to Fibrosis: The introduction does not clearly connect endometriosis issues to fibrosis. Adding specifics on how the review addresses this would improve its rationale.-**

*The introduction has been modified as advised*

**Redundancy: The introduction repeats information on endometriosis mechanisms and diagnostic challenges. Reducing repetition would improve clarity.**

*The redundant portion has been edited as advised*

**Minor Abstract: the first sentence: "estrogen-dependent" repeated word- Removed mesenchymal to epithelial transition (FMT) change to "MET"- Changed**

Literature Review:

**Fibrotic Endometriosis Overview: The discussion on animal model limitations could be more focused. Highlighting specific shortcomings, especially in fibrosis and EMT representation, would provide clearer insights.**

*The overview has been modified as advised*

**There is a mouse model for endometriosis and fibrosis (PMID: 30626716).**

*But it is developed in Baboon, what we are trying to discuss here is the fibrotic mice model*

**Endometriotic Models: While the challenges of developing accurate models are discussed, more specific examples would be beneficial. Consider adding key limitations of rodent models and clarifying how estrogen-induced EMT impacts translation to human disease.**

*Modified as advised*

**EMT and MMPs in Endometriosis: The discussion on MMPs and EMT lacks detailed mechanisms and direct evidence. Emphasizing experimental findings and**

**strengthening the link between MMPs, EMT, and disease progression would improve this section.**

*Modified as advised*

*We extend our heartfelt gratitude for the feedback.*

**Competing Interests:** None

The benefits of publishing with F1000Research:

- Your article is published within days, with no editorial bias
- You can publish traditional articles, null/negative results, case reports, data notes and more
- The peer review process is transparent and collaborative
- Your article is indexed in PubMed after passing peer review
- Dedicated customer support at every stage

For pre-submission enquiries, contact [research@f1000.com](mailto:research@f1000.com)

**F1000Research**