

Innate Immunity to *Mycobacterium tuberculosis*

Reinout van Crevel,¹ Tom H. M. Ottenhoff,² and Jos W. M. van der Meer^{1*}

Department of Internal Medicine, University Medical Center Nijmegen, Nijmegen,¹ and Department of Immunohematology and Blood Transfusion, Leiden University Medical Center, Leiden,² The Netherlands

INTRODUCTION	294
Chronological Events in the Pathogenesis of Tuberculosis	294
Protection against Tuberculosis.....	295
Acquired T-cell-mediated immunity	295
Evidence for innate immunity	295
PHAGOCYTOSIS OF <i>M. TUBERCULOSIS</i>	296
RECOGNITION OF <i>M. TUBERCULOSIS</i> : ROLE OF TOLL-LIKE RECEPTORS	297
CYTOKINE PRODUCTION DRIVEN BY <i>M. TUBERCULOSIS</i>	298
Proinflammatory Cytokines	298
TNF- α	298
IL-1 β	298
IL-6	298
IL-12	298
IL-18 and IL-15.....	299
IFN- γ	299
Anti-Inflammatory Cytokines	300
IL-10	300
TGF β	300
IL-4	300
Chemokines.....	301
EFFECTOR MECHANISMS FOR KILLING OF <i>M. TUBERCULOSIS</i>	301
INITIATION OF ADAPTIVE IMMUNITY TO <i>M. TUBERCULOSIS</i>	302
Antigen Presentation	302
Costimulation	303
Cytokine Production	303
CONCLUDING REMARKS	303
ACKNOWLEDGMENT.....	304
REFERENCES	304

INTRODUCTION

One-third of the world population is infected with *Mycobacterium tuberculosis*, but only 5 to 10% of this population has a lifetime risk of developing active tuberculosis, either within 1 or 2 years after infection (primary tuberculosis) or thereafter (postprimary tuberculosis) (Fig. 1). When active tuberculosis develops, disease localization, severity, and outcome are highly variable. Miliary tuberculosis, characterized by the hematogenous dissemination of large numbers of mycobacteria throughout the body, is the most serious disease manifestation. On the other end of the clinical spectrum, tuberculous pleuritis is usually self-limiting. Tuberculosis may develop anywhere in the body, but usually presents as pulmonary infection, ranging from mild infiltration to chronic, cavitary, and severely destructive disease. The different manifestations of infection with *M. tuberculosis* reflect the balance between the bacillus and host defense mechanisms, in which the quality of host defense determines outcome. In this review, emphasis is placed on the

natural, innate host defense mechanisms against *M. tuberculosis*. However, to enable the reader to place those mechanisms in the context of both innate and acquired defense, a complete picture of *M. tuberculosis* infection is briefly reviewed first. One should be aware that dissecting innate and acquired host defense mechanisms is an artificial approach. In real life the two components of the host response are complementary and synergistic.

Chronological Events in the Pathogenesis of Tuberculosis

Based on Lurie's fundamental studies in rabbits (131), four stages of pulmonary tuberculosis have been distinguished (50). The first stage begins with inhalation of tubercle bacilli. Alveolar macrophages ingest the bacilli and often destroy them. At this stage, the destruction of mycobacteria depends on the intrinsic microbicidal capacity of host phagocytes and virulence factors of the ingested mycobacteria. Mycobacteria which escape the initial intracellular destruction will multiply, and this will lead to disruption of the macrophage. When this happens, blood monocytes and other inflammatory cells are attracted to the lung (second stage). These monocytes will differentiate into macrophages which again readily ingest but do not destroy the mycobacteria. In this symbiotic stage, mycobacteria grow log

* Corresponding author. Mailing address: Department of Internal Medicine, University Medical Center Nijmegen, P.O. Box 9101, 6500 HB Nijmegen, The Netherlands. Phone: 003124-3618819. Fax: 0031-243541734. E-mail: j.vandermeer@aig.azn.nl.

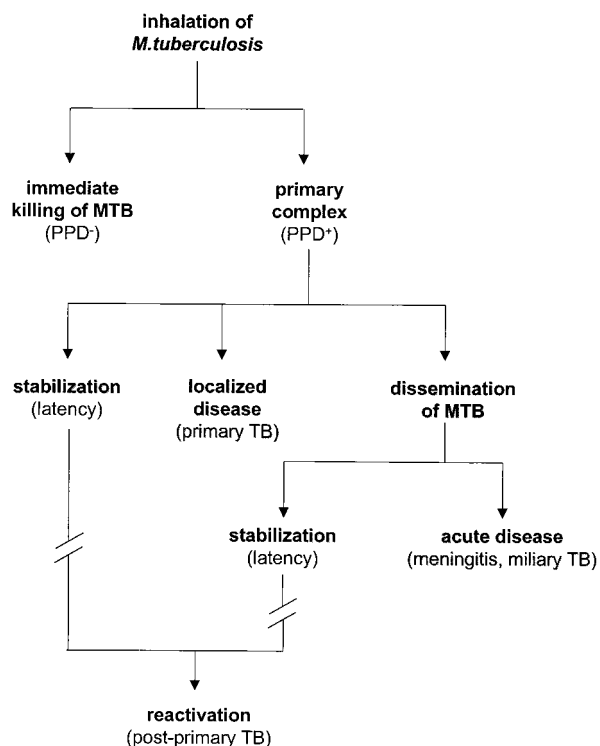


FIG. 1. Chronological events after inhalation of *M. tuberculosis*. After inhalation of *M. tuberculosis* (MTB) droplet nuclei, several scenarios may follow. Mycobacteria may be destroyed by alveolar macrophages, in which case no real infection will take place. Alternatively, *M. tuberculosis* may not be immediately killed, and so a primary complex consisting of a small infiltrate and a draining lymph node will develop. Small calcifications may be seen on radiographic examination and the PPD skin test, as a marker of an *M. tuberculosis*-specific T-cell response, becomes positive. Most often, infection is stabilized at this point. In a minority of cases active disease now develops (primary tuberculosis [TB]), either in the lungs or anywhere else after hematogenous dissemination of *M. tuberculosis*. Months or years afterwards, usually under conditions of failing immune surveillance, latent infection may reactivate (postprimary TB).

arithmically, and blood-derived macrophages accumulate, but little tissue damage occurs. Two to three weeks after infection, T-cell immunity develops, with antigen-specific T lymphocytes that arrive, proliferate within the early lesions or tubercles, and then activate macrophages to kill the intracellular mycobacteria. Subsequent to this phase the early logarithmic bacillary growth stops (third stage). Central solid necrosis in these primary lesions inhibits extracellular growth of mycobacteria. As a result, infection may become stationary or dormant. Disease may progress, and hematogenous dissemination may take place after primary infection, as well as months or years afterwards (postprimary tuberculosis), under conditions of failing immune surveillance. Liquefied caseous foci provide excellent conditions for extracellular growth of *M. tuberculosis*. Cavity formation may lead to rupture of nearby bronchi, allowing the bacilli to spread through the airways to other parts of the lung and the outside environment. In summary, after entry in the human lung, *M. tuberculosis* has a series of encounters with different host defense mechanisms. The final outcome of infection with *M. tuberculosis* depends on the balance between (i)

outgrowth and killing of *M. tuberculosis* and (ii) the extent of tissue necrosis, fibrosis, and regeneration.

Protection against Tuberculosis

Acquired T-cell-mediated immunity. Elimination of *M. tuberculosis* infection mainly depends on the success of the interaction between infected macrophages and T lymphocytes. Primary as well as acquired immunodeficiencies, especially human immunodeficiency virus infection, have dramatically shown the importance of cellular immunity in tuberculosis. $CD4^+$ T cells exert their protective effect by the production of cytokines, primarily gamma interferon ($IFN-\gamma$), after stimulation with mycobacterial antigens. Other T-cell subsets, like $CD8^+$ T cells, are likely to contribute as well, by secreting cytokines and lysing infected cells (79, 214). The T-cell response is mostly antigen specific, and attention has focused on the identification of immunodominant antigens which might be used for the development of effective vaccines (6). The acquired T-cell response develops in the context of the major histocompatibility complex (MHC), and polymorphism of MHC may contribute to differences in disease susceptibility or outcome (27, 82, 178).

Functional diversity of T lymphocytes may also be relevant. In 1986, it was reported that murine helper T (Th) lymphocytes could be divided into two subsets: Th1 clones were characterized by the production of $IFN-\gamma$, and Th2 clones were characterized by the production of interleukin 4 (IL-4) (143). Both subsets develop from naive T cells, whose differentiation is influenced by the environment: IL-12, produced by activated macrophages and dendritic cells, is the principal Th1-inducing cytokine, while IL-4 promotes induction of Th2 cells (1). More cytokines and different cellular subsets have been included in this Th1-Th2 concept (144), which is thought to be relevant in many disease entities (129). In mycobacterial infection, Th1-type cytokines seem essential for protective immunity. Indeed, $IFN-\gamma$ gene knockout (KO) mice are highly susceptible to *M. tuberculosis* (44), and individuals lacking receptors for $IFN-\gamma$ suffer from recurrent, sometimes lethal mycobacterial infections (70, 98, 151). Th2-type cytokines inhibit the in vitro production of $IFN-\gamma$ (129, 175), as well as the activation of macrophages (7), and may therefore weaken host defense (56). We and others have shown an increase in Th2-type cytokines in tuberculosis patients (23, 59, 199, 218, 234). However, this is not a consistent finding (14, 91, 123, 126), and the relevance of the Th1-Th2 concept in disease susceptibility or presentation remains uncertain.

Evidence for innate immunity. Phagocytic cells play a key role in the initiation and direction of adaptive T-cell immunity by presentation of mycobacterial antigens and expression of costimulatory signals and cytokines. In addition, innate defense mechanisms of phagocytic cells may be important, as highlighted in Lurie's fundamental studies with resistant and susceptible inbred rabbits (131). Seven days after primary infection through inhalation of tubercle bacilli, the lungs of mycobacterium-susceptible rabbits contained 20- to 30-fold more viable mycobacteria than did the lungs of mycobacterium-resistant rabbits (50). Obviously, this difference during early infection cannot be attributed to T-cell immunity. More recently it was found that acquired T-cell immunity in vaccinated mice

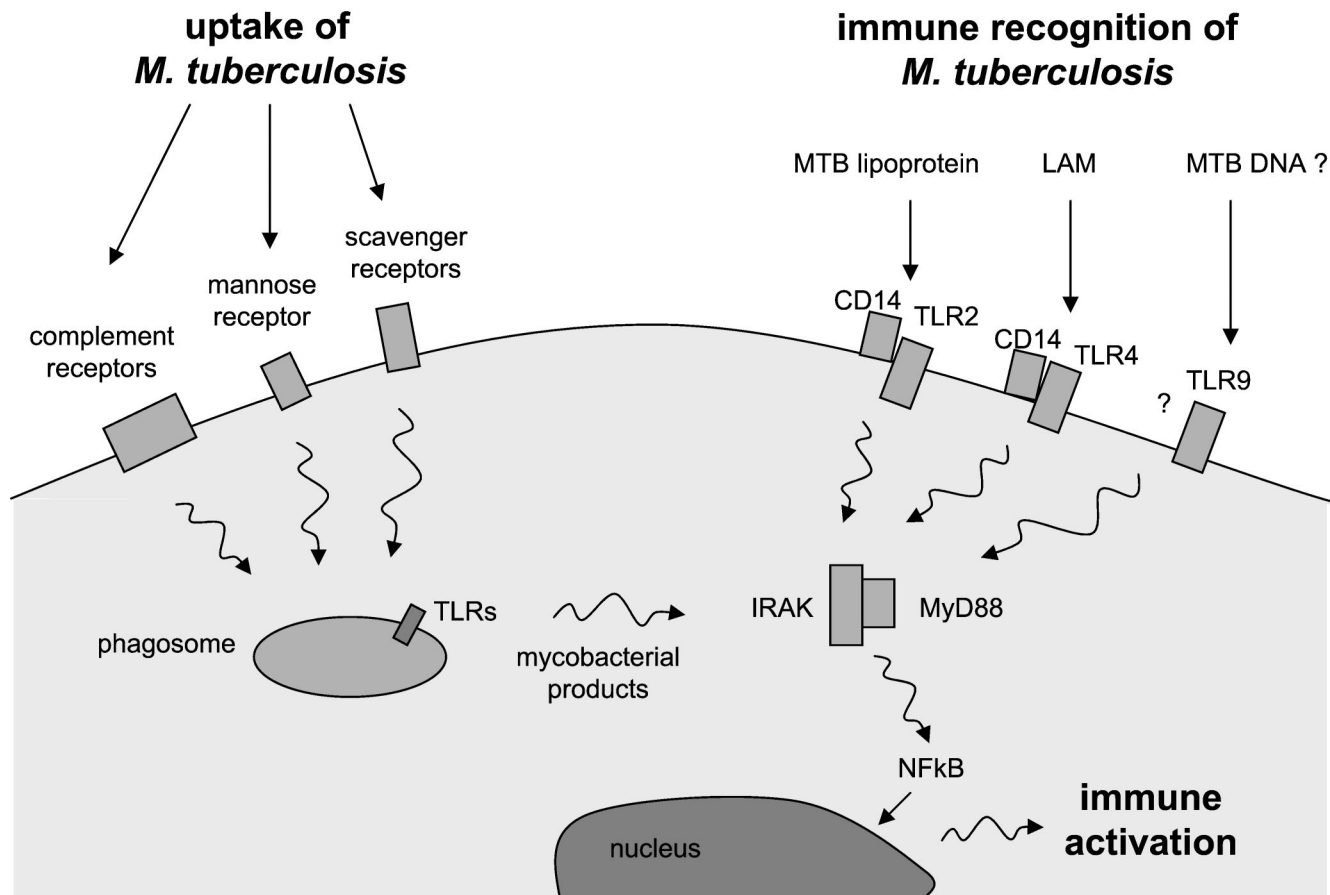


FIG. 2. Phagocytosis and immune recognition of *M. tuberculosis*. Various receptors have been identified for phagocytosis of *M. tuberculosis* (MTB) by macrophages and dendritic cells: complement receptors are primarily responsible for uptake of opsonized *M. tuberculosis*; MRs and scavenger receptors for uptake of nonopsonized *M. tuberculosis*. TLRs play a central role in immune recognition of *M. tuberculosis*. In the context of CD14, TLR2 binds lipoarabinomannan, a heterodimer of TLR2 and TLR6 binds a 19-kDa *M. tuberculosis* lipoprotein, TLR4 binds to an undefined heat-labile cell-associated factor, and (possibly) TLR9 binds to *M. tuberculosis* DNA. After binding to TLRs, common signalling pathways lead to cell activation and cytokine production. TLRs are expressed not only at the cell surface but also in phagosomes; therefore, immune activation may occur with or without phagocytosis. On the other hand, phagocytosis alone probably does not lead to immune activation without the involvement of TLRs.

effectively protects them from disseminated tuberculosis but does not prevent the initial pulmonary infection (43, 155).

In human disease, the same holds true. Acquired T-cell immunity after vaccination with *Mycobacterium bovis* BCG is more effective against disseminated infection than against pulmonary disease (40). Similarly, naturally acquired T-cell immunity does not prevent exogenous reinfection of the lung (239). Thus, local, T-cell-independent host defense mechanisms clearly are involved in protection against pulmonary infection. More epidemiological data support a role for innate immunity in human tuberculosis. For example, in racially integrated nursing homes, infection, as measured by tuberculin skin test conversion, occurred twice as often in black as in white individuals who were equally exposed to active tuberculosis (211). Apparently, innate host defense mechanisms at this early stage were less efficient in black residents. In accordance with this, macrophages from Afro-Americans demonstrate a relative permissiveness for intracellular growth of virulent mycobacteria (47). Support for the relevance of T-cell-independent, intrinsic bactericidal activity of macrophages is also

found in genetic studies which have shown associations between tuberculosis and functional gene polymorphism for various macrophage products (18, 19, 247, 248). There is more evidence, from both clinical and experimental studies, to support the relevance of innate immunity in tuberculosis. In the following paragraphs, the various components and processes that make up the innate host response to *M. tuberculosis* are discussed in more detail.

PHAGOCYTOSIS OF *M. TUBERCULOSIS*

Alveolar resident macrophages are the primary cell type involved in the initial uptake of *M. tuberculosis*. After this first encounter, dendritic cells and monocyte-derived macrophages also take part in the phagocytic process (89, 224). Endocytosis of *M. tuberculosis* involves different receptors on the phagocytic cell (Fig. 2) which either bind to nonopsonized *M. tuberculosis* or recognize opsonins on the surface of *M. tuberculosis*. As an example of the latter mechanism, mycobacteria can invade host macrophages after opsonization with complement factor

C3, which is followed by binding and uptake through complement receptor 1 (CR1), CR3, and CR4 (2, 93, 195). The relative importance of the various receptors for complement factor C3 is apparent from experiments in vitro, in which in the absence of CR3, phagocytosis of *M. tuberculosis* by human macrophages and monocytes is reduced by approximately 70 to 80% (195, 196). For opsonization with C3, the split product C3b should first be generated by activation of the complement system. *M. tuberculosis* also utilizes part of the classical pathway of complement activation by direct binding to C2a, even in the absence of C4b; in this way the C3b necessary for binding to CR1 is formed (198). This mechanism facilitates mycobacterial uptake in environments low in opsonins, such as the lung. Nevertheless, nonopsonized *M. tuberculosis* can bind directly to CR3 (48) and CR4 (253). However, the best-characterized receptor for non-opsonin-mediated phagocytosis of *M. tuberculosis* is the macrophage mannose receptor (MR), which recognizes terminal mannose residues on mycobacteria (195, 197). When uptake by CRs and MR is blocked, macrophages may also internalize *M. tuberculosis* through the type A scavenger receptor (258). Fc γ receptors, which facilitate phagocytosis of particles coated with antibodies of the immunoglobulin G class, seem to play little role in tuberculosis (9).

Enhanced binding of *M. tuberculosis* to epithelial cells or alveolar macrophages may represent a risk factor for developing clinical tuberculosis. Collectins, a structurally related group of proteins that includes surfactant proteins, mannose-binding lectins (MBLs), and C1q, seem to be important in this respect. Surfactant protein A (Sp-A) facilitates the uptake of *M. tuberculosis* (170), through binding to either the macrophages (78), type II pneumocytes (22, 244), or neutrophils (67). Interestingly, it has been reported that human immunodeficiency virus-infected individuals have increased levels of Sp-A in the lungs, and this results in a threefold-greater attachment of *M. tuberculosis* to alveolar macrophages (62). In contrast, another surfactant protein, Sp-D, has been found to block the uptake of pathogenic strains of *M. tuberculosis* in macrophages (69). It may therefore be hypothesized that the relative concentrations of different surfactant proteins correlate with the risk of infection.

Another member of the collectin family, the plasma factor MBL, may also be involved in the uptake of mycobacteria by phagocytic cells. MBL recognizes carbohydrate configurations on a wide variety of pathogens (150) and induces phagocytosis directly through a yet-undefined receptor or indirectly by activation of the complement system (230). Genetic polymorphisms of the MBL gene account for significant variability of serum MBL concentrations in different populations (127). One study has reported elevated concentrations of MBL in the serum of tuberculosis patients (77), and genetic polymorphisms associated with increased production of MBL have been reported to be a relative disadvantage in mycobacterial infections (200).

Although *M. tuberculosis* has a tropism for phagocytic cells, it may also interact with nonprofessional phagocytic cells, such as alveolar epithelial cells (22). This binding may involve fibronectin, a glycoprotein found in plasma and on the outer surface of many cell types (186). Similar to *Mycobacterium leprae* (32), *M. tuberculosis* may bind to epithelial cells since the bacterium produces and secretes the 30- to 31-kDa antigen 85

complex, a member of the fibronectin-binding protein family (246). In addition, a 28-kDa heparin-binding adhesin, produced by *M. tuberculosis*, will bind to sulfated glycoconjugates on host cells (136).

Thus, there are multiple mechanisms for the uptake of *M. tuberculosis*, involving a number of different host cell receptors. Most of these interactions have been demonstrated in vitro, and their relative importance in vivo remains to be shown. Distinct routes of entry of *M. tuberculosis* may lead to differences in signal transduction, immune activation, and intracellular survival of *M. tuberculosis*. For example, Fc γ -receptor-mediated phagocytosis is directly linked to an inflammatory response, and binding to CR is not (2). Survival of *M. tuberculosis* after binding to CR1 is better than that after binding to CR3 or CR4 (51). Also, phagocytosis of Sp-A-opsonized mycobacteria by alveolar macrophages suppresses reactive nitrogen intermediates (170), one of the putative effector mechanisms involved in the killing of mycobacteria (8, 36, 158). Likewise, virulent strains of *M. tuberculosis* are phagocytosed through MR, while attenuated strains are not (195), suggesting that this route of entrance is advantageous to the mycobacterium. Indeed, phagocytosis through MR does not trigger O₂⁻ production (10), and *M. tuberculosis* exerts an anti-inflammatory signal through MR (153). In vivo, the possible role of these events in immune evasion by *M. tuberculosis* remains to be determined. Of interest, strong linkage was found with several markers on chromosome 10p13 (204), where the MR gene is located, in a recent genome-wide scan of 245 families with leprosy in India (64).

RECOGNITION OF *M. TUBERCULOSIS*: ROLE OF TOLL-LIKE RECEPTORS

Besides phagocytosis, recognition of *M. tuberculosis* or mycobacterial products is a crucial step in an effective host response. Immune recognition of the major mycobacterial cell wall component, lipoarabinomannan (LAM), appears to resemble that of gram-negative bacterial lipopolysaccharide (LPS) (257). Several circulating factors and receptors are involved. Plasma LPS-binding protein enhances macrophage responses to LPS and LAM by transferring these microbial products to the cell surface receptor CD14 (68). Similarly, soluble CD14 confers responsiveness to both LAM and LPS in CD14-negative cells (252). Of interest, concentrations of CD14 and LPS-binding protein in serum were elevated in patients with active tuberculosis (109).

Toll-like receptors (TLRs) are phylogenetically conserved mediators of innate immunity which are essential for microbial recognition on macrophages and dendritic cells (20, 135, 240). Members of the TLR family are transmembrane proteins containing repeated leucine-rich motifs in their extracellular domains, similar to other pattern-recognizing proteins of the innate immune system. The cytoplasmic domain of TLR is homologous to the signaling domain of IL-1 receptor (IL-1R) and links to IRAK (IL-1R-associated kinase), a serine kinase that activates transcription factors like NF- κ B to signal the production of cytokines (159). To date, at least 10 TLRs have been identified; of those TLR2, TLR4, and TLR9 seem responsible for the cellular responses to peptidoglycan and bac-

terial lipopeptides (251), endotoxin of gram-negative bacteria (196), and bacterial DNA (88), respectively.

TLRs are also involved in cellular recognition of mycobacteria (Fig. 2). Through TLRs, *M. tuberculosis* lysate or soluble mycobacterial cell wall-associated lipoproteins induce production of IL-12, a strong proinflammatory cytokine (29). MyD88 (myeloid differentiation protein 88), a common signaling component that links all TLRs to IRAK (159), was found to be essential for *M. tuberculosis*-induced macrophage activation (232). A mutation of TLR2 specifically inhibited *M. tuberculosis*-induced tumor necrosis factor alpha (TNF- α) production; this inhibition was incomplete, thereby suggesting that besides TLR2, other TLRs may be involved (232). In a transfection model using Chinese hamster ovary (CHO) cells (which are relatively deficient in TLR), expression of TLR2 or TLR4 conferred responsiveness to both virulent and attenuated *M. tuberculosis* (134). TLR2, and not TLR4, was necessary for signaling of the mycobacterial LPS LAM (134, 232) and a 19-kDa *M. tuberculosis* lipoprotein (29, 157), while an undefined heat-labile cell-associated mycobacterial factor was found to be the ligand for TLR4 (133, 134). Interestingly, mycobacterial infection and proinflammatory cytokines increase surface expression of TLR2 (243). Besides TLR2 and TLR4, other TLRs may be involved in immune recognition of *M. tuberculosis*: heterodimerization of TLR2 with TLR6 or TLR1 is necessary for signal transduction (31, 167), and TLR9 binds CpG dinucleotides in bacterial DNA (87, 88).

From several lines of evidence it has become clear that phagocytosis does not lead to immune activation in the absence of functional TLRs (Fig. 2). Even though TLR2 is recruited to phagosomes during phagocytosis (231), cytokine production was eliminated by the expression of a mutant TLR2, but particle binding and internalization were unaffected. Furthermore, the expression of CD14 and TLRs did not alter uptake of *M. tuberculosis* in in vitro studies. Apparently, TLRs play an important role in innate recognition of mycobacteria, and this also holds for humans. Interestingly, a recent study showed that TLR2 activation directly led to killing of intracellular *M. tuberculosis* in alveolar macrophages in vitro (222). It may be anticipated that genetic polymorphism, or perhaps mutations, in the relevant TLR or the downstream signaling proteins will affect the performance of the innate host response to mycobacteria.

CYTOKINE PRODUCTION DRIVEN BY *M. TUBERCULOSIS*

Proinflammatory Cytokines

Recognition of *M. tuberculosis* by phagocytic cells leads to cell activation and production of cytokines, which in itself induces further activation and cytokine production in a complex process of regulation and cross-regulation. This cytokine network plays a crucial role in the inflammatory response and the outcome of mycobacterial infections (Fig. 3). Several proinflammatory cytokines are discussed here.

TNF- α . Stimulation of monocytes, macrophages (233), and dendritic cells (89) with mycobacteria or mycobacterial products induces the production of TNF- α , a prototype proinflam-

matory cytokine. TNF- α plays a key role in granuloma formation (117, 201), induces macrophage activation, and has immunoregulatory properties (164, 229). In mice, TNF- α is also important for containment of latent infection in granuloma (139). In tuberculosis patients, TNF- α production is present at the site of disease (14, 33, 124). Systemic spillover of TNF- α may account for unwanted inflammatory effects like fever and wasting. Clinical deterioration early in treatment is associated with a selective increase of TNF- α in plasma (16), and quick recovery is associated with a rapid decrease of TNF- α in plasma (100). To limit the deleterious effects of TNF- α (17, 91), systemic production of TNF- α is downregulated (72, 103, 220), and soluble TNF- α receptors which block TNF- α activity are increased (108). KO mice which are unable to make TNF- α (15, 111, 180) or the TNF- α receptor p55 (71, 201) display an increased susceptibility for mycobacteria. In line with this, the use of potent monoclonal anti-TNF- α antibodies in Crohn's disease and rheumatoid arthritis has been associated with increased reactivation of tuberculosis (including military and extrapulmonary disease) (115). In human tuberculosis, no TNF- α gene mutations have been found and no positive association has yet been established between gene polymorphism for TNF- α and disease susceptibility (24, 82).

IL-1 β . A second proinflammatory cytokine involved in the host response to *M. tuberculosis* is IL-1 β . Like TNF- α , IL-1 β is mainly produced by monocytes, macrophages, and dendritic cells (49, 181). In tuberculosis patients, IL-1 β is expressed in excess (193) and at the site of disease (21, 124). Studies with mice suggest an important role of IL-1 β in tuberculosis: IL-1 α and -1 β double-KO mice (250) and IL-1R type I-deficient mice (which do not respond to IL-1) display an increased mycobacterial outgrowth and also defective granuloma formation after infection with *M. tuberculosis* (106). In addition, among 90 Hindu tuberculosis patients in London, haplotypes for IL-1 β and IL-1R antagonist (IL-1Ra) (a naturally occurring antagonist of IL-1) were unevenly distributed: a "proinflammatory haplotype," reflected in an increased ratio of IL-1 β production to IL-1Ra production, was significantly more common in tuberculosis pleurisy than in other types of tuberculosis (248). Because tuberculosis pleurisy is a usually self-resolving type of primary tuberculosis, one may hypothesize that an increased IL-1 β /IL-1Ra ratio protects against a more severe presentation of tuberculosis.

IL-6. IL-6, which has both pro- and anti-inflammatory properties (237), is produced early during mycobacterial infection and at the site of infection (97, 124, 161). IL-6 may be harmful in mycobacterial infections, as it inhibits the production of TNF- α and IL-1 β (194) and promotes in vitro growth of *Mycobacterium avium* (203). Other reports support a protective role for IL-6: IL-6-deficient mice display increased susceptibility to infection with *M. tuberculosis* (121), which seems related to a deficient production of IFN- γ early in the infection, before adaptive T-cell immunity has fully developed (192).

IL-12. IL-12 is a key player in host defense against *M. tuberculosis*. IL-12 is produced mainly by phagocytic cells, and phagocytosis of *M. tuberculosis* seems necessary for its production (75, 122). IL-12 has a crucial role in the induction of IFN- γ production (162). In tuberculosis, IL-12 has been detected in lung infiltrates (33, 219), in pleurisy (254), in granulomas (21), and in lymphadenitis (126). The expression of IL-12 receptors

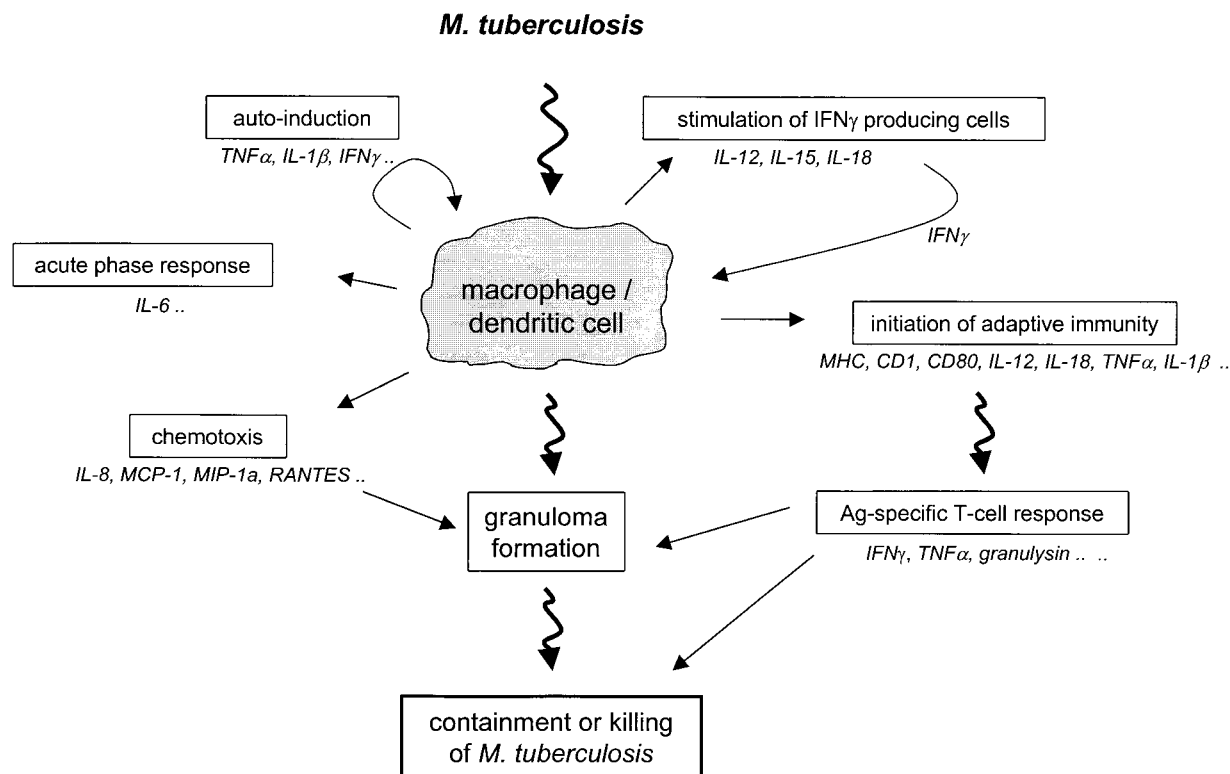


FIG. 3. Inflammatory response of phagocytic cells upon activation with *M. tuberculosis*. Immune recognition of *M. tuberculosis* by macrophages and dendritic cells is followed by an inflammatory response with a crucial role for cytokine production. Initial events in this cellular response include nonspecific host defense mechanisms, which may lead to early killing or containment of infection. In addition, various cellular products, including cytokines and cell surface markers, are involved in these processes as depicted in the figure (in italics). The anti-inflammatory cytokines (see text ["Anti-Inflammatory Cytokines"]) are not represented in this picture.

is also increased at the site of disease (255). The protective role of IL-12 can be inferred from the observation that IL-12 KO mice are highly susceptible to mycobacterial infections (45, 241, 242). In humans suffering from recurrent nontuberculous mycobacterial infections, deleterious genetic mutations in the genes encoding IL-12p40 and IL-12R have been identified (3, 5, 53, 73). These patients display a reduced capacity to produce IFN- γ (166). Recently, an IL-12R defect has also been identified in a patient with abdominal tuberculosis (4). Apparently, IL-12 is a regulatory cytokine which connects the innate and adaptive host response to mycobacteria (162, 207, 228) and which exerts its protective effects mainly through the induction of IFN- γ (45).

IL-18 and IL-15. In addition to IL-12, two cytokines are important in the IFN- γ axis. IL-18, a novel proinflammatory cytokine which shares many features with IL-1 (58), was initially discovered as an IFN- γ -inducing factor, synergistic with IL-12 (162). It has since been found that IL-18 also stimulates the production of other proinflammatory cytokines, chemokines, and transcription factors (149, 176). There is evidence for a protective role of IL-18 during mycobacterial infections: IL-18 KO mice are highly susceptible to BCG and *M. tuberculosis* (216), and in mice infected with *M. leprae*, resistance is correlated with a higher expression of IL-18 (118). IL-18's major effect in this model seems to be the induction of IFN- γ . Indeed in tuberculosis pleu-

risy, parallel concentrations of IL-18 and IFN- γ were found (238). Also, *M. tuberculosis*-mediated production of IL-18 by peripheral blood mononuclear cells is reduced in tuberculosis patients, and this reduction may be responsible for reduced IFN- γ production (238). IL-15 resembles IL-2 in its biologic activities, stimulating T-cell and NK-cell proliferation and activation (60, 116). Unlike IL-2, however, IL-15 is primarily synthesized by monocytes and macrophages. IL-15 mRNA was found to be expressed more strongly in immunologically resistant tuberculoid leprosy than in unresponsive lepromatous leprosy (110). As far as we know, no report has been published yet about IL-15 in tuberculosis.

IFN- γ . The protective role of IFN- γ in tuberculosis is well established (70), primarily in the context of antigen-specific T-cell immunity (6). Mycobacterial antigen-specific IFN- γ production in vitro can be used as a surrogate marker of infection with *M. tuberculosis* (235). In principal, naive (tuberculin skin test-negative) individuals do not show purified protein derivative (PPD)-stimulated IFN- γ production in vitro (235). However, in both PPD-positive and PPD-negative individuals, *M. tuberculosis*-infected monocytes stimulate lymphocytes for the in vitro production of IFN- γ (103). We found that PPD (consisting of mycobacterial proteins) selectively induces IFN- γ production in PPD-positive individuals, while *M. tuberculosis* sonicate, which contains mycobacterial polyglycans and phospholipids, nonselectively induced IFN- γ production in PPD-

positive and PPD-negative individuals alike (R. van Crevel et al., unpublished data). This *M. tuberculosis* sonicate stimulates production of monocyte-derived cytokines like TNF- α and IL-1 β (236). These, as well as IL-12 and IL-18, may act as costimuli for antigen-independent IFN- γ production (12, 137, 162).

Which cells are responsible for this nonspecific production of IFN- γ ? First, before adaptive T-cell immunity has fully developed, NK cells may be the main producers of IFN- γ , either in response to IL-12 and IL-18 (101) or directly by exposure to mycobacterial oligodeoxynucleotides (76). Second, lung macrophages were found to produce IFN- γ in *M. tuberculosis*-infected mice (242). This remarkable observation needs confirmation. Third, T cells bearing limited T-cell receptor diversity, including T cells expressing $\gamma\delta$ T-cell receptors ($\gamma\delta$ T cells) and CD1-restricted T cells, may produce IFN- γ during early infection. $\gamma\delta$ T cells may directly recognize small mycobacterial proteins (102) and nonprotein ligands (42, 113, 221) in the absence of antigen-presenting molecules. In mice, a single priming with *M. tuberculosis* substantially increases the number of $\gamma\delta$ T cells, but not the number of $\alpha\beta$ T cells (CD4⁺ and CD8⁺ T cells) in draining lymph nodes (102). In mice infected with *M. tuberculosis*, $\gamma\delta$ T cells accumulate at the site of disease (85) and seem necessary for early containment of mycobacterial infections (63, 120). Like $\gamma\delta$ T cells, CD1-restricted T cells do not react with mycobacterial protein antigens in the context of MHC class I or class II molecules. Instead, these T cells react with mycobacterial lipid and glycolipid antigens bound to CD1 on antigen-presenting cells (141, 142, 174, 205). CD1 molecules have close structural resemblance to MHC class I but are relatively nonpolymorphic. In mycobacterial infections, several different T-cell subsets have been found to interact with CD1, including CD4⁻ CD8⁻ (double-negative) T cells, CD4⁺ or CD8⁺ single-positive T cells, and $\gamma\delta$ T cells (173, 185, 206). CD1-restricted T cells display cytotoxic activity and are able to produce IFN- γ (213).

Anti-Inflammatory Cytokines

The proinflammatory response which is initiated by *M. tuberculosis* is antagonized by anti-inflammatory mechanisms. Soluble cytokine receptors (e.g., soluble TNF- α receptors I and II) prevent binding of cytokines to cellular receptors, thereby blocking further signaling. As already mentioned, IL-1 β is counteracted by a specific antagonist, IL-1Ra. In addition, three anti-inflammatory cytokines, IL-4, IL-10, and transforming growth factor beta (TGF β), may inhibit the production or the effects of proinflammatory cytokines in tuberculosis.

IL-10. IL-10 is produced by macrophages after phagocytosis of *M. tuberculosis* (202) and after binding of mycobacterial LAM (49). T lymphocytes, including *M. tuberculosis*-reactive T cells, are also capable of producing IL-10 (13, 28, 81). In patients with tuberculosis, expression of IL-10 mRNA has been demonstrated in circulating mononuclear cells, at the site of disease in pleural fluid, and in alveolar lavage fluid (14, 81). Ex vivo production of IL-10 was shown to be upregulated in tuberculosis by some investigators (95, 227), but this was not found by others (126). IL-10 antagonizes the proinflammatory cytokine response by downregulation of production of IFN- γ , TNF- α , and IL-12 (74, 83, 95). Since the last of these cyto-

kines—as discussed under the previous section heading—are essential for protective immunity in tuberculosis, IL-10 would be expected to interfere with host defense against *M. tuberculosis*. Indeed, IL-10 transgenic mice with mycobacterial infection develop a larger bacterial burden (145). In line with this, IL-10-deficient mice showed a lower bacterial burden early after infection in one report (146), albeit normal resistance in two other reports (66, 154). In human tuberculosis, IL-10 production was higher in anergic patients, both before and after successful treatment, suggesting that *M. tuberculosis*-induced IL-10 production suppresses an effective immune response (28).

TGF β . TGF β also seems to counteract protective immunity in tuberculosis. Mycobacterial products induce production of TGF β by monocytes and dendritic cells (226). Interestingly, LAM from virulent mycobacteria selectively induces TGF β production (49). Like IL-10, TGF β is produced in excess during tuberculosis and is expressed at the site of disease (41, 226). TGF β suppresses cell-mediated immunity: in T cells, TGF β inhibits proliferation and IFN- γ production; in macrophages it antagonizes antigen presentation, proinflammatory cytokine production, and cellular activation (225). In addition, TGF β may be involved in tissue damage and fibrosis during tuberculosis, as it promotes the production and deposition of macrophage collagenases (225) and collagen matrix (210). Naturally occurring inhibitors of TGF β eliminate the suppressive effects of TGF β on mononuclear cells from tuberculosis patients and in macrophages infected with *M. tuberculosis* (92). Within the anti-inflammatory response, TGF β and IL-10 seem to synergize: TGF β selectively induces IL-10 production, and both cytokines show synergism in the suppression of IFN- γ production (165). TGF β may also interact with IL-4. Paradoxically, in the presence of both cytokines, T cells may be directed towards a protective Th1-type profile (65).

IL-4. The deleterious effects of IL-4 in intracellular infections (including tuberculosis) have been ascribed to this cytokine's suppression of IFN- γ production (129, 175) and macrophage activation (7, 56). In mice infected with *M. tuberculosis*, progressive disease (90) and reactivation of latent infection (99) are both associated with increased production of IL-4. Similarly, overexpression of IL-4 intensified tissue damage in experimental infection (130). Conversely, inhibition of IL-4 production did not seem to promote cellular immunity: IL-4^{-/-} mice displayed normal instead of increased susceptibility to mycobacteria in two studies, suggesting that IL-4 may be a consequence rather than the cause of tuberculosis development (66, 154). In contrast, a recent study on IL-4 KO mice showed increased granuloma size and mycobacterial outgrowth after airborne infection (217). Compared with control mice, production of proinflammatory cytokines was increased in these animals and accompanied by excessive tissue damage. We and others have detected increased production of IL-4 in human tuberculosis patients, especially those with cavitary disease (191, 193, 218, 234). However, this is not a consistent finding (14, 91, 123, 126), and it still remains to be determined whether IL-4 causes or merely reflects disease activity in human tuberculosis. Thus, the role of IL-4 in tuberculosis susceptibility is not yet entirely resolved.

Production of soluble cytokine receptors and anti-inflammatory cytokines may help regulate the inflammatory response

during tuberculosis. An unrestrained proinflammatory response may lead to excessive tissue damage (as in IL-4 KO mice), while a predominance of anti-inflammatory effects may favor outgrowth of *M. tuberculosis*. *M. tuberculosis* may evade protective immune mechanisms of the host by selective induction of anti-inflammatory cytokines. In addition, individuals genetically predisposed to higher production of these cytokines may display increased innate susceptibility to *M. tuberculosis*. To date, such genetic predisposition has not yet been reported in humans.

Chemokines

Chemotactic cytokines (chemokines) are largely responsible for recruitment of inflammatory cells to the site of infection. About 40 chemokines and 16 chemokine receptors have now been identified (259). A number of chemokines have been investigated in tuberculosis. First, several reports have addressed the role of IL-8, which attracts neutrophils, T lymphocytes, and possibly monocytes. Upon phagocytosis of *M. tuberculosis* (256) or stimulation with LAM, macrophages produce IL-8 (107, 256). This production is substantially blocked by neutralization of TNF- α and IL-1 β , indicating that IL-8 production is largely under the control of these cytokines (256). Pulmonary epithelial cells also produce IL-8 in response to *M. tuberculosis* (245). In tuberculosis patients, IL-8 has been found in bronchoalveolar lavage fluid (119, 188), lymph nodes (21), and plasma (72, 107). Patients who died from tuberculosis showed higher concentrations of IL-8 (72). Interestingly, following antituberculous treatment, concentrations of IL-8 remain elevated in alveolar lavage fluid (119) and serum (72) for months. This finding is puzzling, because first of all it is unclear what drives such prolonged production and second IL-8 is a potent neutrophil attractant and a neutrophilic response is not prominent in established tuberculosis.

A second major chemokine is monocyte chemoattractant protein 1 (MCP-1), which is produced by and acts on monocytes and macrophages. *M. tuberculosis* preferentially induces production of MCP-1 by monocytes (112). In murine models, deficiency of MCP-1 inhibited granuloma formation (128). Also, C-C chemokine receptor 2-deficient mice, which fail to respond to MCP-1, display reduced granuloma formation and suppressed Th1-type cytokine production (26) and die early after infection with *M. tuberculosis* (171). In alveolar lavage fluid (119), serum (107), and pleural fluid (138) from tuberculosis patients, concentrations of MCP-1 were found to be elevated. A third chemokine is RANTES, which is produced by a wide variety of cells and which shows promiscuous binding to multiple chemokine receptors. In murine models, expression of RANTES was associated with development of *M. bovis*-induced pulmonary granulomas (37). In human patients, RANTES has been detected in alveolar lavage fluid (119). Apart from IL-8, MCP-1, and RANTES, other chemokines may be involved in cell trafficking in tuberculosis (177). Inhibition of chemokine production may lead to an insufficient local tissue response. However, due to the redundancy of the chemokine system, the contribution of individual chemokines is difficult to evaluate. As far as we are aware, no clear-cut defects of chemokine production have been identified up to now in patients with mycobacterial infectious diseases.

EFFECTOR MECHANISMS FOR KILLING OF *M. TUBERCULOSIS*

Macrophages are the main effector cells involved in killing of *M. tuberculosis*. To become active against mycobacteria, macrophages need to be activated. In vitro models of macrophage activation for the killing of *M. tuberculosis* seem rather artificial, and therefore the exact conditions for optimal activation remain unknown. However, it is clear that lymphocyte products, mainly IFN- γ , and proinflammatory cytokines like TNF- α are important. In addition, vitamin D seems involved in macrophage activation.

The active metabolite of vitamin D, 1,25-dihydroxyvitamin D, helps macrophages suppress growth of *M. tuberculosis* (55, 182, 184). Concentrations of vitamin D in serum have been reported to be lower in tuberculosis patients in some populations (52) but not in others (84). A recent study among Gujarati Hindus, a mainly vegetarian immigrant population in London, showed that vitamin D deficiency was a risk factor for tuberculosis (247). When considered in combination with vitamin D deficiency, three polymorphisms of the vitamin D receptor were also associated with disease susceptibility in this population. For another variant of the vitamin D receptor (*tt* genotype), 6% of tuberculosis patients in The Gambia proved homozygous compared with 12% of control subjects (18), suggesting that this polymorphism protects against active tuberculosis. It should be noted, however, that no functional changes which might affect macrophage activation have yet been described for any of the vitamin D receptor polymorphisms associated with disease.

Putative mechanisms involved in killing of *M. tuberculosis* within the phagolysosomes of activated macrophages include the production of reactive oxygen intermediates (ROI) or reactive nitrogen intermediates (RNI). The study of these mechanisms has been hampered by differences between mice (the most important animal model used for mycobacterial infections) and humans. However, when we restrict ourselves to data derived from human cells or patients, controversy remains. In vitro, mycobacteria seem resistant to killing by ROI such as superoxide and hydrogen peroxide (36). A possible explanation lies in the fact that several mycobacterial products, including sulfatides and LAM, are able to scavenge ROI (35, 148, 168). In vivo, it was found that p47^{phox}^{-/-} mice, which lack a functional p47 unit of NADPH-oxidase needed for superoxide production, suffer from increased early outgrowth of mycobacteria in experimental infection (46). Therefore, this supports a role for ROI in the killing of *M. tuberculosis*. On the other hand, patients with chronic granulomatous disease, who have defective production of ROI, do not seem to display increased susceptibility to tuberculosis (249).

The role of RNI in tuberculosis also remains a matter of debate. In vitro, human alveolar macrophages infected with *M. bovis* BCG display increased inducible nitric oxide synthase (iNOS) mRNA (158), and inhibition of iNOS is followed by increased bacterial outgrowth (158). In tuberculosis patients, alveolar macrophages show increased production of iNOS as well (152). However, whether iNOS gene expression leads to in vivo NO production remains uncertain, as in humans post-translational modification of iNOS may be necessary for func-

tional activity (190). Therefore, the exact contribution of RNI in human tuberculosis remains to be elucidated.

Sustained intracellular growth of *M. tuberculosis* may depend on its ability to avoid destruction by lysosomal enzymes, ROI, and RNI. When phagocytosed by macrophages, bacteria typically enter specialized phagosomes that undergo progressive acidification followed by fusion with lysosomes. However, *M. tuberculosis* delays or inhibits fusion of phagosomes and lysosomes (9, 187). In addition, *M. tuberculosis* prevents phagosomal maturation and acidification of phagosomes, thereby blocking the digestive activity of acidic hydrolases (39, 215).

Nramp1, which codes for natural-resistance-associated macrophage protein (Nramp), is an interesting gene involved in macrophage activation and mycobacterial killing (25). The protein is an integral membrane protein which belongs to a family of metal ion transporters. These metal ions, particularly Fe^{2+} , are involved in macrophage activation and generation of toxic antimicrobial radicals (260). Following phagocytosis, *Nramp1* becomes part of the phagosome. *Nramp1* mutant mice display reduced phagosomal maturation and acidification (86). Surprisingly, mycobacterial outgrowth is unaffected in these animals (156). In humans, functional polymorphism in the promoter region of *Nramp1*, associated with reduced gene expression, was found to be associated with susceptibility to tuberculosis in studies from West Africa (19, 34). Thus, genetic variation in *Nramp1* may affect the outcome of infection with *M. tuberculosis*. However, to prove the significance of this gene in human tuberculosis further epidemiological and mechanistic studies are needed.

Apoptosis may constitute another effector mechanism for the infected host to limit outgrowth of *M. tuberculosis* (114, 172). Apoptosis of phagocytic cells may prevent dissemination of infection. In addition, apoptosis of infected cells reduces viability of intracellular mycobacteria, while necrosis of infected cells does not (140, 160). TNF- α is required for induction of apoptosis in response to infection with *M. tuberculosis* (114). Interestingly, pathogenic *M. tuberculosis* strains induced significantly less host cell apoptosis than related attenuated strains (114). This difference was explained by selective induction and release of neutralizing soluble TNF- α receptors by pathogenic strains (11). Release of TNF- α receptors in turn was regulated by IL-10 production (11). Thus, pathogenic strains of *M. tuberculosis* may selectively induce IL-10, leading to decreased TNF- α activity and reduced apoptosis of infected cells. Independent of cytokine production, LAM may prevent in vitro apoptosis of *M. tuberculosis*-infected cells in a Ca^{2+} -dependent mechanism (183). In addition, increased expression of Fas ligand in infected macrophages may also contribute to decreased macrophage apoptosis (147).

We briefly want to mention the role of other cell types. Although the precise mechanisms remains to be elucidated, human neutrophils may contribute to killing of *M. tuberculosis* (30, 104). However, patients with disorders of neutrophil activity do not show increased susceptibility to tuberculosis. Of more clinical relevance may be the contribution of cytotoxic T cells (54). Of special interest, granules of cytotoxic T cells and NK cells contain granulysin, a molecule that directly alters the mycobacterial membrane integrity and thereby kills *M. tuberculosis* (212).

INITIATION OF ADAPTIVE IMMUNITY TO *M. TUBERCULOSIS*

It is clear that innate and adaptive immunity are closely connected. Macrophages and dendritic cells, the primary cell types involved in the innate immune response to mycobacteria, play a crucial role in the initiation of adaptive immunity. Although an in-depth overview of the mechanisms involved in the adaptive host response to mycobacteria is beyond the scope of this review, we will briefly summarize this subject. In principle, three processes contribute to the initiation of adaptive immunity: antigen presentation, costimulation, and cytokine production. Patients with active tuberculosis may suffer from anergy or T-cell unresponsiveness (95). This may be caused by intrinsic defects or dynamic inhibition of one of these three processes.

Antigen Presentation

Presentation of mycobacterial antigens by macrophages and dendritic cells involves distinctive mechanisms. First, MHC class II molecules present mycobacterial proteins to antigen-specific CD4^+ T cells. These antigens must be processed in phagolysosomal compartments in professional antigen-presenting cells. Second, MHC class I molecules, expressed on all nucleated cells, are able to present mycobacterial proteins to antigen-specific CD8^+ T cells. This mechanism allows for the presentation of cytosolic antigens, which may be important as certain mycobacterial antigens may somehow escape the phagosome (132). The importance of MHC class I-mediated antigen presentation has been shown in murine models (208) and tuberculosis patients (38, 79). Third, nonpolymorphic MHC class I molecules such as type I CD1 (-a, -b, and -c) molecules, which are expressed on macrophages and dendritic cells, are able to present mycobacterial lipoproteins to CD1-restricted T cells. This mechanism of antigen presentation enables the activation of a larger fraction of T cells at an earlier point in the infection, before antigen specificity has developed. A fourth pathway may involve nonpolymorphic MHC class Ib molecules (125).

The expression of particular class I and class II MHC alleles in an individual determines the ability of that individual to respond to particular (mycobacterial) antigens and epitopes. Certain allelic human leukocyte antigen (HLA) variants have been associated with tuberculosis (82, 179). HLA polymorphism may explain the vulnerability of certain isolated populations like Amazonian Indians which have only recently been exposed to tuberculosis (209). There is a large body of evidence for similar mechanisms in leprosy. The expression of antigen-presenting molecules is also a dynamic process, which is regulated by cytokines. While proinflammatory cytokines, primarily IFN- γ , stimulate expression of MHC, anti-inflammatory cytokines inhibit its expression. Mycobacteria may modulate the antigen presentation function, but different results have been obtained in vitro with macrophages and dendritic cells. Mycobacteria may downregulate expression of antigen-presenting molecules in macrophages, most likely through the production of anti-inflammatory cytokines (80, 169). On the other hand, MHC expression on dendritic cells is upregulated following *M. tuberculosis* infection (89, 223).

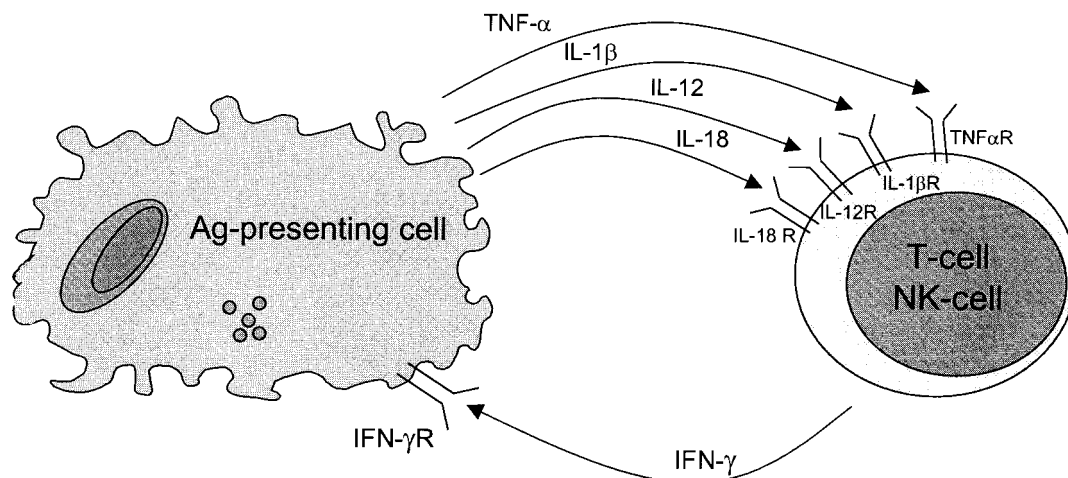


FIG. 4. Cytokines and cytokine receptors involved in type I immunity in tuberculosis. A major effector mechanism of cell-mediated immunity in tuberculosis is the activation of *M. tuberculosis*-infected macrophages by IFN- γ . IFN- γ is produced by NK cells and different T-cell subsets, and its production is regulated by TNF- α , IL-1 β , IL-12, IL-18, and possibly IL-15, all released from activated macrophages and dendritic cells. Ag, antigen.

Costimulation

It is well known that antigen presentation only leads to T-cell stimulation in the presence of particular costimulatory signals. The most well-known costimulatory signals for T-cell stimulation are B-7.1 (CD80) and B-7.2 (CD86). These molecules are expressed on macrophages and dendritic cells and bind to CD28 and to CTLA-4 on T cells. Interestingly, *in vitro* infection of monocytes with *M. tuberculosis* leads to diminished expression of B-7.1 (189). On the other hand, *M. tuberculosis* infection of dendritic cells induces expression of B7.1, CD40, and ICAM-1 (89). In the absence of proper costimulatory signals, antigen presentation may lead to increased apoptosis of T cells (94, 96).

Cytokine Production

Several cytokines produced by activated macrophages and dendritic cells are essential for stimulation of T lymphocytes. Macrophages and dendritic cells produce the type 1 cytokines IL-12, IL-18, and IL-23 (163). In patients with recurrent or fatal nontuberculous mycobacterial infections, functional genetic mutations have been found in the genes encoding IL-12p40 (5, 73), IL-12R β 1 (53, 166), IFN- γ receptor 1 (98, 105, 151), and IFN- γ receptor 2 (61), all of which are involved in IFN- γ receptor signaling in macrophages and dendritic cells. Clearly the capacity of these cells to produce or react to Th1-type cytokines is necessary for proper T-cell stimulation (Fig. 4). In addition, proinflammatory cytokines like IL-1 (57) and TNF- α (229) have important T-cell stimulatory properties. Reduced production of type 1 or proinflammatory cytokines may delay or decrease T-cell stimulation and the initiation of antigen-specific T-cell immunity. In this respect, the production of anti-inflammatory cytokines may be relevant as well. For instance, in anergic tuberculosis patients it was recently shown that IL-10 production is constitutively present and that T-cell receptor-mediated stimulation results in defective signal trans-

duction (28). TGF β may have a similar antagonistic role (92, 225).

CONCLUDING REMARKS

The interplay between *M. tuberculosis* and the human host determines the outcome after infection. With respect to the human host, both innate and adaptive defense mechanisms are involved. After uptake of *M. tuberculosis* in alveolar macrophages, several possible scenarios may be envisaged. *M. tuberculosis* may be destroyed immediately, in which case no adaptive T-cell response is developed. When infection is established, however, a focal nonspecific inflammatory response follows. This response is regulated by a network of pro- and anti-inflammatory cytokines and chemokines. Most of the mediators at this point are derived from macrophages or dendritic cells, but IFN- γ has several cellular sources, including NK cells, $\gamma\delta$ T cells, and CD1-restricted T cells. This initial response determines the local outgrowth of *M. tuberculosis* (sometimes dissemination) or containment of infection. Phagocytic cells also play a key role in antigen presentation and the initiation of T-cell immunity which follows. At many stages in the host response, *M. tuberculosis* has developed mechanisms to circumvent or antagonize protective immunity.

The interindividual differences in outcome after infection with *M. tuberculosis* may in part be explained by the efficiency of various innate host defense mechanisms. Phagocytosis, immune recognition, cytokine production, and effector mechanisms may all contribute to innate immunity. In this respect, different gene polymorphisms have been found which are associated with increased susceptibility and severity of tuberculosis. Some of these polymorphisms are functional, but for many of these no functional (immunologic) changes have been demonstrated yet, and these associations therefore need further confirmation and investigation.

What remains to be determined is to what extent the encounters between *M. tuberculosis* and the human host can be

modulated. In many settings the most cost-effective way to improve disease outcome is to increase patients' access to health care facilities and to strengthen the quality of diagnosis and antimycobacterial treatment. However, in many parts of the world the spread of multidrug-resistant tuberculosis seriously threatens the success of antibiotic treatment. Therefore, more-effective vaccines and new therapeutic strategies (like immunotherapy) are desperately needed. It is expected that increased understanding of disease pathogenesis will help the design of such adjunctive treatment, which will undoubtedly benefit the outcome of individual patients and limit the spread of *M. tuberculosis* around the world.

ACKNOWLEDGMENT

We thank Mihai Netea for fruitful discussions about the subject and review of the manuscript.

REFERENCES

- Abbas, A. K., K. M. Murphy, and A. Sher. 1996. Functional diversity of helper T lymphocytes. *Nature* **383**:787–793.
- Aderem, A., and D. M. Underhill. 1999. Mechanisms of phagocytosis in macrophages. *Annu. Rev. Immunol.* **17**:593–623.
- Altare, F., A. Durandy, D. Lammas, J. Emile, S. Lamhamedi, F. Le Deist, P. Drysdale, E. Jouangy, R. Doffinger, F. Bernaudin, O. Jeppsson, J. A. Gollob, E. Meini, A. W. Segal, A. Fischer, D. Kumararatne, and J. L. Casanova. 1998. Impairment of mycobacterial immunity in human interleukin-12 receptor deficiency. *Science* **280**:1432–1435.
- Altare, F., A. Ensser, A. Breiman, J. Reichenbach, J. E. Baghdadi, A. Fischer, J. F. Emile, J. L. Gaillard, E. Meini, and J. L. Casanova. 2001. Interleukin-12 receptor beta1 deficiency in a patient with abdominal tuberculosis. *J. Infect. Dis.* **184**:231–236.
- Altare, F., D. Lammas, P. Revy, E. Jouangy, R. Doffinger, S. Lamhamedi, P. Drysdale, D. Scheel Toellner, J. Girdlestone, P. Darbyshire, M. Wadhwa, H. Dockrell, M. Salmon, A. Fischer, A. Durandy, J. L. Casanova, and D. S. Kumararatne. 1998. Inherited interleukin 12 deficiency in a child with bacille Calmette-Guerin and Salmonella enteritidis disseminated infection. *J. Clin. Investig.* **102**:2035–2040.
- Andersen, P. 1997. Host responses and antigens involved in protective immunity to Mycobacterium tuberculosis. *Scand. J. Immunol.* **45**:115–131.
- Appelberg, R., I. M. Orme, M. I. Pinto de Sousa, and M. T. Silva. 1992. In vitro effects of interleukin-4 on interferon-gamma-induced macrophage activation. *Immunology* **76**:553–559.
- Arias, M., M. Rojas, J. Zabaleta, J. I. Rodriguez, S. C. Paris, L. F. Barrera, and L. F. Garcia. 1997. Inhibition of virulent Mycobacterium tuberculosis by Bcg^r and Bcg^s macrophages correlates with nitric oxide production. *J. Infect. Dis.* **176**:1552–1558.
- Armstrong, J. A., and P. D. Hart. 1975. Phagosome-lysosome interactions in cultured macrophages infected with virulent tubercle bacilli. Reversal of the usual nonfusion pattern and observations on bacterial survival. *J. Exp. Med.* **142**:1–16.
- Astarié-Dequeker, C., E. N. N'Diaye, C. Le, V. M. G. Rittig, J. Prandi, and I. Maridonneau-Parini. 1999. The mannose receptor mediates uptake of pathogenic and nonpathogenic mycobacteria and bypasses bactericidal responses in human macrophages. *Infect. Immun.* **67**:469–477.
- Balcewicz-Sablinska, M. K., J. Keane, H. Kornfeld, and H. G. Remold. 1998. Pathogenic Mycobacterium tuberculosis evades apoptosis of host macrophages by release of TNF-R2, resulting in inactivation of TNF-alpha. *J. Immunol.* **161**:2636–2641.
- Bancroft, G. J., R. D. Schreiber, and E. R. Unanue. 1991. Natural immunity: a T-cell-independent pathway of macrophage activation, defined in the scid mouse. *Immunol. Rev.* **124**:5–24.
- Barnes, P. F., J. S. Abrams, S. Lu, P. A. Sieling, T. H. Rea, and R. L. Modlin. 1993. Patterns of cytokine production by mycobacterium-reactive human T-cell clones. *Infect. Immun.* **61**:197–203.
- Barnes, P. F., S. Lu, J. S. Abrams, E. Wang, M. Yamamura, and R. L. Modlin. 1993. Cytokine production at the site of disease in human tuberculosis. *Infect. Immun.* **61**:3482–3489.
- Bean, A. G., D. R. Roach, H. Briscoe, M. P. France, H. Korner, J. D. Sedgwick, and W. J. Britton. 1999. Structural deficiencies in granuloma formation in TNF gene-targeted mice underlie the heightened susceptibility to aerosol Mycobacterium tuberculosis infection, which is not compensated for by lymphotoxin. *J. Immunol.* **162**:3504–3511.
- Bekker, L. G., G. Maartens, L. Steyn, and G. Kaplan. 1998. Selective increase in plasma tumor necrosis factor-alpha and concomitant clinical deterioration after initiating therapy in patients with severe tuberculosis. *J. Infect. Dis.* **178**:580–584.
- Bekker, L. G., A. L. Moreira, A. Bergtold, S. Freeman, B. Ryffel, and G. Kaplan. 2000. Immunopathologic effects of tumor necrosis factor alpha in murine mycobacterial infection are dose dependent. *Infect. Immun.* **68**:6954–6961.
- Bellamy, R., C. Ruwende, T. Corrah, K. P. McAdam, M. Thursz, H. C. Whittle, and A. V. Hill. 1999. Tuberculosis and chronic hepatitis B virus infection in Africans and variation in the vitamin D receptor gene. *J. Infect. Dis.* **179**:721–724.
- Bellamy, R., C. Ruwende, T. Corrah, K. P. McAdam, H. C. Whittle, and A. V. Hill. 1998. Variations in the NRAMP1 gene and susceptibility to tuberculosis in West Africans. *N. Engl. J. Med.* **338**:640–644.
- Belvin, M. P., and K. V. Anderson. 1996. A conserved signaling pathway: the Drosophila toll-dorsal pathway. *Annu. Rev. Cell Dev. Biol.* **12**:393–416.
- Bergeron, A., M. Bonay, M. Kambouchner, D. Lecossier, M. Riquet, P. Soler, A. Hance, and A. Tazi. 1997. Cytokine patterns in tuberculous and sarcoid granulomas: correlations with histopathologic features of the granulomatous response. *J. Immunol.* **159**:3034–3043.
- Bermudez, L. E., and J. Goodman. 1996. Mycobacterium tuberculosis invades and replicates within type II alveolar cells. *Infect. Immun.* **64**:1400–1406.
- Bhattacharyya, S., R. Singla, A. B. Dey, and H. K. Prasad. 1999. Dichotomy of cytokine profiles in patients and high-risk healthy subjects exposed to tuberculosis. *Infect. Immun.* **67**:5597–5603.
- Blackwell, J. M., G. F. Black, C. S. Peacock, E. N. Miller, D. Sibthorpe, D. Gnananandha, J. J. Shaw, F. Silveira, Z. Lins Lainson, F. Ramos, A. Collins, and M. A. Shaw. 1997. Immunogenetics of leishmanial and mycobacterial infections: the Belem Family Study. *Philos. Trans. R. Soc. Lond. B Biol. Sci.* **352**:1331–1345.
- Blackwell, J. M., S. Searle, T. Goswami, and E. N. Miller. 2000. Understanding the multiple functions of Nramp1. *Microbes Infect.* **2**:317–321.
- Boring, L., J. Gosling, S. W. Chensue, S. L. Kunkel, R. V. Farese, Jr., H. E. Broxmeyer, and I. F. Charo. 1997. Impaired monocyte migration and reduced type 1 (Th1) cytokine responses in C-C chemokine receptor 2 knock-out mice. *J. Clin. Investig.* **100**:2552–2561.
- Bothamley, G. H., J. S. Beck, G. M. Schreuder, J. D'Amaro, R. R. de Vries, T. Kardjito, and J. Ivanyi. 1989. Association of tuberculosis and M. tuberculosis-specific antibody levels with HLA. *J. Infect. Dis.* **159**:549–555.
- Boussiotis, V. A., E. Y. Tsai, E. J. Yunis, S. Thim, J. C. Delgado, C. C. Dascher, A. Berezovskaya, D. Rousset, J. M. Reynes, and A. E. Goldfeld. 2000. IL-10-producing T cells suppress immune responses in anergic tuberculosis patients. *J. Clin. Investig.* **105**:1317–1325.
- Brightbill, H. D., D. H. Libraty, S. R. Krutzik, R. B. Yang, J. T. Belisle, J. R. Bleharski, M. Maitland, M. V. Norgard, S. E. Plevy, S. T. Smale, P. J. Brennan, B. R. Bloom, P. J. Godowski, and R. L. Modlin. 1999. Host defense mechanisms triggered by microbial lipoproteins through toll-like receptors. *Science* **285**:732–736.
- Brown, A. E., T. J. Holzer, and B. R. Andersen. 1987. Capacity of human neutrophils to kill Mycobacterium tuberculosis. *J. Infect. Dis.* **156**:985–989.
- Bulut, Y., E. Faure, L. Thomas, O. Equils, and M. Arditi. 2001. Cooperation of Toll-like receptor 2 and 6 for cellular activation by soluble tuberculosis factor and Borrelia burgdorferi outer surface protein A lipoprotein: role of Toll-interacting protein and IL-1 receptor signaling molecules in Toll-like receptor 2 signaling. *J. Immunol.* **167**:987–994.
- Byrd, S. R., R. Gelber, and L. E. Bermudez. 1993. Roles of soluble fibronectin and beta 1 integrin receptors in the binding of Mycobacterium leprae to nasal epithelial cells. *Clin. Immunol. Immunopathol.* **69**:266–271.
- Casarini, M., F. Ameglio, L. Alemanno, P. Zangrilli, P. Mattia, G. Paone, A. Bisetti, and S. Giosue. 1999. Cytokine levels correlate with a radiologic score in active pulmonary tuberculosis. *Am. J. Respir. Crit. Care Med.* **159**:143–148.
- Cervino, A. C., S. Lakiss, O. Sow, and A. V. Hill. 2000. Allelic association between the NRAMP1 gene and susceptibility to tuberculosis in Guinea-Conakry. *Ann. Hum. Genet.* **64**:507–512.
- Chan, J., X. D. Fan, S. W. Hunter, P. J. Brennan, and B. R. Bloom. 1991. Lipoarabinomannan, a possible virulence factor involved in persistence of Mycobacterium tuberculosis within macrophages. *Infect. Immun.* **59**:1755–1761.
- Chan, J., Y. Xing, R. S. Magliozzo, and B. R. Bloom. 1992. Killing of virulent Mycobacterium tuberculosis by reactive nitrogen intermediates produced by activated murine macrophages. *J. Exp. Med.* **175**:1111–1122.
- Chensue, S. W., K. S. Warmington, E. J. Allenspach, B. Lu, C. Gerard, S. L. Kunkel, and N. W. Lukacs. 1999. Differential expression and cross-regulatory function of RANTES during mycobacterial (type 1) and schistosomal (type 2) antigen-elicited granulomatous inflammation. *J. Immunol.* **163**:165–173.
- Cho, S., V. Mehra, S. Thoma-Uzynski, S. Stenger, N. Serbina, R. J. Maz-zaccaro, J. L. Flynn, P. F. Barnes, S. Southwood, E. Celis, B. R. Bloom, R. L. Modlin, and A. Sette. 2000. Antimicrobial activity of MHC class I-restricted CD8+ T cells in human tuberculosis. *Proc. Natl. Acad. Sci. USA* **97**:12210–12215.
- Clemens, D. L., and M. A. Horwitz. 1995. Characterization of the Myco-

- bacterium tuberculosis phagosome and evidence that phagosomal maturation is inhibited. *J. Exp. Med.* **181**:257–270.
40. Colditz, G. A., T. F. Brewer, C. S. Berkey, M. E. Wilson, E. Burdick, H. V. Fineberg, and F. Mosteller. 1994. Efficacy of BCG vaccine in the prevention of tuberculosis. Meta-analysis of the published literature. *JAMA* **271**:698–702.
 41. Condos, R., W. N. Rom, Y. M. Liu, and N. W. Schluger. 1998. Local immune responses correlate with presentation and outcome in tuberculosis. *Am. J. Respir. Crit. Care Med.* **157**:729–735.
 42. Constant, P., F. Davodeau, M. A. Peyrat, Y. Poquet, G. Puzo, M. Bonneville, and J. J. Fournie. 1994. Stimulation of human gamma delta T cells by nonpeptidic mycobacterial ligands. *Science* **264**:267–270.
 43. Cooper, A. M., J. E. Callahan, M. Keen, J. T. Belisle, and I. M. Orme. 1997. Expression of memory immunity in the lung following re-exposure to *Mycobacterium tuberculosis*. *Tuber. Lung Dis.* **78**:67–73.
 44. Cooper, A. M., D. K. Dalton, T. A. Stewart, J. P. Griffin, D. G. Russell, and I. M. Orme. 1993. Disseminated tuberculosis in interferon gamma gene-disrupted mice. *J. Exp. Med.* **178**:2243–2247.
 45. Cooper, A. M., J. Magram, J. Ferrante, and I. M. Orme. 1997. Interleukin 12 (IL-12) is crucial to the development of protective immunity in mice intravenously infected with *Mycobacterium tuberculosis*. *J. Exp. Med.* **186**:39–45.
 46. Cooper, A. M., B. H. Segal, A. A. Frank, S. M. Holland, and I. M. Orme. 2000. Transient loss of resistance to pulmonary tuberculosis in $p47^{phox-/-}$ mice. *Infect. Immun.* **68**:1231–1234.
 47. Crowle, A. J., and N. Elkins. 1990. Relative permissiveness of macrophages from black and white people for virulent tubercle bacilli. *Infect. Immun.* **58**:632–638.
 48. Cywes, C., H. C. Hoppe, M. Daffe, and M. R. Ehlers. 1997. Nonopsonic binding of *Mycobacterium tuberculosis* to complement receptor type 3 is mediated by capsular polysaccharides and is strain dependent. *Infect. Immun.* **65**:4258–4266.
 49. Dahl, K. E., H. Shiratsuchi, B. D. Hamilton, J. J. Ellner, and Z. Toossi. 1996. Selective induction of transforming growth factor beta in human monocytes by lipoarabinomannan of *Mycobacterium tuberculosis*. *Infect. Immun.* **64**:399–405.
 50. Dannenberg, A. M., Jr., and G. A. Rook. 1994. Pathogenesis of pulmonary tuberculosis: an interplay between tissue-damaging and macrophage-activating immune responses: dual mechanisms that control bacillary multiplication, p. 459–484. *In* B. R. Bloom (ed.), *Tuberculosis: pathogenesis, protection, and control*. ASM Press, Washington, D.C.
 51. da Silva, R. P., B. F. Hall, K. A. Joiner, and D. L. Sacks. 1989. CR1, the C3b receptor, mediates binding of infective *Leishmania major* metacyclic promastigotes to human macrophages. *J. Immunol.* **143**:617–622.
 52. Davies, P. D., R. C. Brown, and J. S. Woodhead. 1985. Serum concentrations of vitamin D metabolites in untreated tuberculosis. *Thorax* **40**:187–190.
 53. De Jong, R., F. Altare, I. A. Haagen, D. G. Elferink, T. deBoer, P. J. C. V. Vriesman, P. J. Kabel, J. M. T. Draaisma, J. T. vanDissel, F. P. Kroon, J. L. Casanova, and T. H. M. Ottenhoff. 1998. Severe mycobacterial and *Salmonella* infections in interleukin-12 receptor-deficient patients. *Science* **280**:1435–1438.
 54. De Libero, G., I. Flesch, and S. H. Kaufmann. 1988. Mycobacteria-reactive Lyt-2^+ T cell lines. *Eur. J. Immunol.* **18**:59–66.
 55. Denis, M. 1991. Killing of *Mycobacterium tuberculosis* within human monocytes: activation by cytokines and calcitriol. *Clin. Exp. Immunol.* **84**:200–206.
 56. de Waal Malefyt, R., C. G. Figdor, and J. E. de Vries. 1993. Effects of interleukin 4 on monocyte functions: comparison to interleukin 13. *Res. Immunol.* **144**:629–633.
 57. Dinarello, C. A. 1996. Biologic basis for interleukin-1 in disease. *Blood* **87**:2095–2147.
 58. Dinarello, C. A., D. Novick, A. J. Puren, G. Fantuzzi, L. Shapiro, H. Muhl, D. Y. Yoon, L. L. Reznikov, S. H. Kim, and M. Rubinstein. 1998. Overview of interleukin-18: more than an interferon-gamma inducing factor. *J. Leukoc. Biol.* **63**:658–664.
 59. Dlugovitzky, D., M. L. Bay, L. Ratani, L. Urizar, C. F. Rondelli, C. Largacha, M. A. Farroni, O. Molteni, and O. A. Bottasso. 1999. In vitro synthesis of interferon-gamma, interleukin-4, transforming growth factor-beta and interleukin-1 beta by peripheral blood mononuclear cells from tuberculosis patients: relationship with the severity of pulmonary involvement. *Scand. J. Immunol.* **49**:210–217.
 60. Doherty, T. M., R. A. Seder, and A. Sher. 1996. Induction and regulation of IL-15 expression in murine macrophages. *J. Immunol.* **156**:735–741.
 61. Dorman, S. E., and S. M. Holland. 1998. Mutation in the signal-transducing chain of the interferon-gamma receptor and susceptibility to mycobacterial infection. *J. Clin. Invest.* **101**:2364–2369.
 62. Downing, J. F., R. Pasula, J. R. Wright, H. L. Twigg III, and W. J. Martin II. 1995. Surfactant protein A promotes attachment of *Mycobacterium tuberculosis* to alveolar macrophages during infection with human immunodeficiency virus. *Proc. Natl. Acad. Sci. USA* **92**:4848–4852.
 63. D'Souza, C. D., A. M. Cooper, A. A. Frank, R. J. Mazzaccaro, B. R. Bloom, and I. M. Orme. 1997. An anti-inflammatory role for gamma delta T lymphocytes in acquired immunity to *Mycobacterium tuberculosis*. *J. Immunol.* **158**:1217–1221.
 64. Eichbaum, Q., P. Clerc, G. Bruns, F. McKeon, and R. A. Ezekowitz. 1994. Assignment of the human macrophage mannose receptor gene (MRC1) to 10p13 by in situ hybridization and PCR-based somatic cell hybrid mapping. *Genomics* **22**:656–658.
 65. Erard, F., J. A. Garcia Sanz, R. Moriggl, and M. T. Wild. 1999. Presence or absence of TGF-beta determines IL-4-induced generation of type 1 or type 2 CD8 T cell subsets. *J. Immunol.* **162**:209–214.
 66. Erb, K. J., J. Kirman, B. Delahunt, W. Chen, and G. Le Gros. 1998. IL-4, IL-5 and IL-10 are not required for the control of *M. bovis*-BCG infection in mice. *Immunol. Cell Biol.* **76**:41–46.
 67. Ernst, J. D. 1998. Macrophage receptors for *Mycobacterium tuberculosis*. *Infect. Immun.* **66**:1277–1281.
 68. Fenton, M. J., and D. T. Golenbock. 1998. LPS-binding proteins and receptors. *J. Leukoc. Biol.* **64**:25–32.
 69. Ferguson, J. S., D. R. Voelker, F. X. McCormack, and L. S. Schlesinger. 1999. Surfactant protein D binds to *Mycobacterium tuberculosis* bacilli and lipoarabinomannan via carbohydrate-lectin interactions resulting in reduced phagocytosis of the bacteria by macrophages. *J. Immunol.* **163**:312–321.
 70. Flynn, J. L., J. Chan, K. J. Triebold, D. K. Dalton, T. A. Stewart, and B. R. Bloom. 1993. An essential role for interferon gamma in resistance to *Mycobacterium tuberculosis* infection. *J. Exp. Med.* **178**:2249–2254.
 71. Flynn, J. L., M. M. Goldstein, J. Chan, K. J. Triebold, K. Pfeffer, C. J. Lowenstein, R. Schreiber, T. W. Mak, and B. R. Bloom. 1995. Tumor necrosis factor-alpha is required in the protective immune response against *Mycobacterium tuberculosis* in mice. *Immunity* **2**:561–572.
 72. Friedland, J. S., J. C. Hartley, C. G. Hartley, R. J. Shattock, and G. E. Griffin. 1995. Inhibition of ex vivo proinflammatory cytokine secretion in fatal *Mycobacterium tuberculosis* infection. *Clin. Exp. Immunol.* **100**:233–238.
 73. Frucht, D. M., and S. M. Holland. 1996. Defective monocyte costimulation for IFN-gamma production in familial disseminated *Mycobacterium avium* complex infection: abnormal IL-12 regulation. *J. Immunol.* **157**:411–416.
 74. Fulton, S. A., J. V. Cross, Z. T. Toossi, and W. H. Boom. 1998. Regulation of interleukin-12 by interleukin-10, transforming growth factor-beta, tumor necrosis factor-alpha, and interferon-gamma in human monocytes infected with *Mycobacterium tuberculosis* H37Ra. *J. Infect. Dis.* **178**:1105–1114.
 75. Fulton, S. A., J. M. Johnsen, S. F. Wolf, D. S. Sieburth, and W. H. Boom. 1996. Interleukin-12 production by human monocytes infected with *Mycobacterium tuberculosis*: role of phagocytosis. *Infect. Immun.* **64**:2523–2531.
 76. Garcia, V. E., K. Uyemura, P. A. Sieling, M. T. Ochoa, C. T. Morita, H. Okamura, M. Kurimoto, T. H. Rea, and R. L. Modlin. 1999. IL-18 promotes type 1 cytokine production from NK cells and T cells in human intracellular infection. *J. Immunol.* **162**:6114–6121.
 77. Garred, P., C. Richter, A. B. Andersen, H. O. Madsen, I. Mtoni, A. Svejgaard, and J. Shao. 1997. Mannan-binding lectin in the sub-Saharan HIV and tuberculosis epidemics. *Scand. J. Immunol.* **46**:204–208.
 78. Gaynor, C. D., F. X. McCormack, D. R. Voelker, S. E. McGowan, and L. S. Schlesinger. 1995. Pulmonary surfactant protein A mediates enhanced phagocytosis of *Mycobacterium tuberculosis* by a direct interaction with human macrophages. *J. Immunol.* **155**:5343–5351.
 79. Geluk, A., K. E. van Meijgaarden, K. L. Franken, J. W. Drijfhout, S. D'Souza, A. Necker, K. Huygen, and T. H. Ottenhoff. 2000. Identification of major epitopes of *Mycobacterium tuberculosis* AG85B that are recognized by HLA-A*0201-restricted CD8⁺ T cells in HLA-transgenic mice and humans. *J. Immunol.* **165**:6463–6471.
 80. Gercken, J., J. Pryjma, M. Ernst, and H. D. Flad. 1994. Defective antigen presentation by *Mycobacterium tuberculosis*-infected monocytes. *Infect. Immun.* **62**:3472–3478.
 81. Gerosa, F., C. Nisii, S. Righetti, R. Micciolo, M. Marchesini, A. Cazzadori, and G. Trinchieri. 1999. CD4⁺ T cell clones producing both interferon-gamma and interleukin-10 predominate in bronchoalveolar lavages of active pulmonary tuberculosis patients. *Clin. Immunol.* **92**:224–234.
 82. Goldfeld, A. E., J. C. Delgado, S. Thim, M. V. Bozon, A. M. Uglierolo, D. Turbay, C. Cohen, and E. J. Yunis. 1998. Association of an HLA-DQ allele with clinical tuberculosis. *JAMA* **279**:226–228.
 83. Gong, J., M. Zhang, R. L. Modlin, P. S. Linsley, D. V. Iyer, Y. Lin, and P. F. Barnes. 1996. Interleukin-10 downregulates *Mycobacterium tuberculosis*-induced Th1 responses and CTLA-4 expression. *Infect. Immun.* **64**:913–918.
 84. Grange, J. M., P. D. Davies, R. C. Brown, J. S. Woodhead, and T. Kardjito. 1985. A study of vitamin D levels in Indonesian patients with untreated pulmonary tuberculosis. *Tubercle* **66**:187–191.
 85. Griffin, J. P., K. V. Harshan, W. K. Born, and I. M. Orme. 1991. Kinetics of accumulation of gamma delta receptor-bearing T lymphocytes in mice infected with live mycobacteria. *Infect. Immun.* **59**:4263–4265.
 86. Hackam, D. J., O. D. Rotstein, W. Zhang, S. Gruenheid, P. Gros, and S. Grinstein. 1998. Host resistance to intracellular infection: mutation of nat-

- ural resistance-associated macrophage protein 1 (Nramp1) impairs phagosomal acidification. *J. Exp. Med.* **188**:351-364.
87. Hajjar, A. M., D. S. O'Mahony, A. Ozinsky, D. M. Underhill, A. Adere, S. J. Klebanoff, and C. B. Wilson. 2001. Cutting edge: functional interactions between toll-like receptor (TLR) 2 and TLR1 or TLR6 in response to phenol-soluble modulins. *J. Immunol.* **166**:15-19.
 88. Hemmi, H., O. Takeuchi, T. Kawai, T. Kaisho, S. Sato, H. Sanjo, M. Matsumoto, K. Hoshino, H. Wagner, K. Takeda, and S. Akira. 2000. A Toll-like receptor recognizes bacterial DNA. *Nature* **408**:740-745.
 89. Henderson, R. A., S. C. Watkins, and J. L. Flynn. 1997. Activation of human dendritic cells following infection with *Mycobacterium tuberculosis*. *J. Immunol.* **159**:635-643.
 90. Hernandez Pando, R., H. Orozco, A. Sampieri, L. Pavon, C. Velasquillo, J. Larriva Sahd, J. M. Alcocer, and M. V. Madrid. 1996. Correlation between the kinetics of TH1/Yh2 cells and pathology in a murine model of experimental pulmonary tuberculosis. *Immunology* **89**:26-33.
 91. Hernandez Pando, R., and G. A. Rook. 1994. The role of TNF-alpha in T-cell-mediated inflammation depends on the Th1/Th2 cytokine balance. *Immunology* **82**:591-595.
 92. Hirsch, C. S., J. J. Ellner, R. Blinkhorn, and Z. Toossi. 1997. In vitro restoration of T cell responses in tuberculosis and augmentation of monocyte effector function against *Mycobacterium tuberculosis* by natural inhibitors of transforming growth factor beta. *Proc. Natl. Acad. Sci. USA* **94**:3926-3931.
 93. Hirsch, C. S., J. J. Ellner, D. G. Russell, and E. A. Rich. 1994. Complement receptor-mediated uptake and tumor necrosis factor-alpha-mediated growth inhibition of *Mycobacterium tuberculosis* by human alveolar macrophages. *J. Immunol.* **152**:743-753.
 94. Hirsch, C. S., Z. Toossi, J. L. Johnson, H. Luzze, L. Ntambi, P. Peters, M. McHugh, A. Okwera, M. Joblo, P. Mugenyi, R. D. Mugerwa, P. Terebuh, and J. J. Ellner. 2001. Augmentation of apoptosis and interferon-gamma production at sites of active *Mycobacterium tuberculosis* infection in human tuberculosis. *J. Infect. Dis.* **183**:779-788.
 95. Hirsch, C. S., Z. Toossi, C. Othieno, J. L. Johnson, S. K. Schwander, S. Robertson, R. S. Wallis, K. Edmonds, A. Okwera, R. Mugerwa, P. Peters, and J. J. Ellner. 1999. Depressed T-cell interferon-gamma responses in pulmonary tuberculosis: analysis of underlying mechanisms and modulation with therapy. *J. Infect. Dis.* **180**:2069-2073.
 96. Hirsch, C. S., Z. Toossi, G. Vanham, J. L. Johnson, P. Peters, A. Okwera, R. Mugerwa, P. Mugenyi, and J. J. Ellner. 1999. Apoptosis and T cell hyporesponsiveness in pulmonary tuberculosis. *J. Infect. Dis.* **179**:945-953.
 97. Hoheisel, G., G. Izbicki, M. Roth, C. H. Chan, J. C. Leung, F. Reichenberger, J. Schauer, and A. P. Perruchoud. 1998. Compartmentalization of pro-inflammatory cytokines in tuberculous pleurisy. *Respir. Med.* **92**:14-17.
 98. Holland, S. M., S. E. Dorman, A. Kwon, I. F. PithaRowe, D. M. Frucht, S. M. Gerstberger, G. J. Noel, P. Vesterhus, M. R. Brown, and T. A. Fleisher. 1998. Abnormal regulation of interferon-gamma, interleukin-12, and tumor necrosis factor-alpha in human interferon-gamma receptor 1 deficiency. *J. Infect. Dis.* **178**:1095-1104.
 99. Howard, A. D., and B. S. Zwilling. 1999. Reactivation of tuberculosis is associated with a shift from type 1 to type 2 cytokines. *Clin. Exp. Immunol.* **115**:428-434.
 100. Hsieh, S. M., C. C. Hung, M. Y. Chen, W. H. Sheng, and S. C. Chang. 1999. Dynamics of plasma cytokine levels in patients with advanced HIV infection and active tuberculosis: implications for early recognition of patients with poor response to anti-tuberculosis treatment. *AIDS* **13**:935-941.
 101. Iho, S., T. Yamamoto, T. Takahashi, and S. Yamamoto. 1999. Oligodeoxynucleotides containing palindromic sequences with internal 5'-CpG-3' act directly on human NK and activated T cells to induce IFN-gamma production in vitro. *J. Immunol.* **163**:3642-3652.
 102. Janis, E. M., S. H. Kaufmann, R. H. Schwartz, and D. M. Pardoll. 1989. Activation of gamma delta T cells in the primary immune response to *Mycobacterium tuberculosis*. *Science* **244**:713-716.
 103. Johnson, B. J., and D. N. McMurray. 1994. Cytokine gene expression by cultures of human lymphocytes with autologous *Mycobacterium tuberculosis*-infected monocytes. *Infect. Immun.* **62**:1444-1450.
 104. Jones, G. S., H. J. Amirault, and B. R. Andersen. 1990. Killing of *Mycobacterium tuberculosis* by neutrophils: a nonoxidative process. *J. Infect. Dis.* **162**:700-704.
 105. Jouanguy, E. M., F. Altare, S. Lamhamedi, P. Revy, J. Emile, M. J. Newport, M. Levin, S. Blanche, E. Seboun, A. Fischer, and J. Casanova. 1996. Interferon-c-receptor deficiency in an infant with fatal Bacille Calmette-Guérin infection. *N. Engl. J. Med.* **335**:1956-1961.
 106. Juffermans, N. P., S. Florquin, L. Camoglio, A. Verbon, A. H. Kolk, P. Speelman, S. J. van Deventer, and T. van der Poll. 2000. Interleukin-1 signaling is essential for host defense during murine pulmonary tuberculosis. *J. Infect. Dis.* **182**:902-908.
 107. Juffermans, N. P., A. Verbon, S. J. van Deventer, H. van Deutekom, J. T. Belis, M. E. Ellis, P. Speelman, and T. van der Poll. 1999. Elevated chemokine concentrations in sera of human immunodeficiency virus (HIV)-seropositive and HIV-seronegative patients with tuberculosis: a possible role for mycobacterial lipoarabinomannan. *Infect. Immun.* **67**:4295-4297.
 108. Juffermans, N. P., A. Verbon, S. J. van Deventer, H. van Deutekom, P. Speelman, and T. van der Poll. 1998. Tumor necrosis factor and interleukin-1 inhibitors as markers of disease activity of tuberculosis. *Am. J. Respir. Crit. Care Med.* **157**:1328-1331.
 109. Juffermans, N. P., A. Verbon, S. J. H. van Deventer, W. A. Buurman, H. van Deutekom, P. Speelman, and T. van der Poll. 1998. Serum concentrations of lipopolysaccharide activity-modulating proteins during tuberculosis. *J. Infect. Dis.* **178**:1839-1842.
 110. Jullien, D., P. A. Sieling, K. Uyemura, N. D. Mar, T. H. Rea, and R. L. Modlin. 1997. IL-15, an immunomodulator of T cell responses in intracellular infection. *J. Immunol.* **158**:800-806.
 111. Kaneko, H., H. Yamada, S. Mizuno, T. Udagawa, Y. Kazumi, K. Sekikawa, and I. Sugawara. 1999. Role of tumor necrosis factor-alpha in *Mycobacterium*-induced granuloma formation in tumor necrosis factor-alpha-deficient mice. *Lab. Invest.* **79**:379-386.
 112. Kasahara, K., T. Tobe, M. Tomita, N. Mukaida, S. Shao Bo, K. Matsushima, T. Yoshida, S. Sugihara, and K. Kobayashi. 1994. Selective expression of monocyte chemoattractant and activating factor/monocyte chemoattractant protein 1 in human blood monocytes by *Mycobacterium tuberculosis*. *J. Infect. Dis.* **170**:1238-1247.
 113. Kaufmann, S. H. 1996. Gamma/delta and other unconventional T lymphocytes: what do they see and what do they do? *Proc. Natl. Acad. Sci. USA* **93**:2272-2279.
 114. Keane, J., M. K. Balcewicz-Sablinska, H. G. Remold, G. L. Chupp, B. B. Meek, M. J. Fenton, and H. Kornfeld. 1997. Infection by *Mycobacterium tuberculosis* promotes human alveolar macrophage apoptosis. *Infect. Immun.* **65**:298-304.
 115. Keane, J., S. Gershon, R. P. Wise, E. Mirabile-Levens, J. Kasznica, W. D. Schwieterman, J. N. Siegel, and M. M. Braun. 2001. Tuberculosis associated with infliximab, a tumor necrosis factor alpha-neutralizing agent. *N. Engl. J. Med.* **345**:1098-1104.
 116. Kennedy, M. K., and L. S. Park. 1996. Characterization of interleukin-15 (IL-15) and the IL-15 receptor complex. *J. Clin. Immunol.* **16**:134-143.
 117. Kindler, V., A. P. Sappino, G. E. Grau, P. F. Piguet, and P. Vassalli. 1989. The inducing role of tumor necrosis factor in the development of bacterial granulomas during BCG infection. *Cell* **56**:731-740.
 118. Kobayashi, K., M. Kai, M. Gidoh, N. Nakata, M. Endoh, R. P. Singh, T. Kasama, and H. Saito. 1998. The possible role of interleukin (IL)-12 and interferon-gamma-inducing factor/IL-18 in protection against experimental *Mycobacterium leprae* infection in mice. *Clin. Immunol. Immunopathol.* **88**:226-231.
 119. Kurashima, K., N. Mukaida, M. Fujimara, M. Yasui, Y. Nakazumi, T. Matsuda, and K. Matsushima. 1997. Elevated chemokine levels in bronchoalveolar lavage fluid of tuberculosis patients. *Am. J. Respir. Crit. Care Med.* **155**:1474-1477.
 120. Ladel, C. H., C. Blum, A. Dreher, K. Reifenberg, and S. H. Kaufmann. 1995. Protective role of gamma/delta T cells and alpha/beta T cells in tuberculosis. *Eur. J. Immunol.* **25**:2877-2881.
 121. Ladel, C. H., C. Blum, A. Dreher, K. Reifenberg, M. Kopf, and S. H. Kaufmann. 1997. Lethal tuberculosis in interleukin-6-deficient mutant mice. *Infect. Immun.* **65**:4843-4849.
 122. Ladel, C. H., G. Szalay, D. Riedel, and S. H. Kaufmann. 1997. Interleukin-12 secretion by *Mycobacterium tuberculosis*-infected macrophages. *Infect. Immun.* **65**:1936-1938.
 123. Lai, C. K., S. Ho, C. H. Chan, J. Chan, D. Choy, R. Leung, and K. N. Lai. 1997. Cytokine gene expression profile of circulating CD4+ T cells in active pulmonary tuberculosis. *Chest* **111**:606-611.
 124. Law, K., M. Weiden, T. Harkin, K. Tchou Wong, C. Chi, and W. N. Rom. 1996. Increased release of interleukin-1 beta, interleukin-6, and tumor necrosis factor-alpha by bronchoalveolar cells lavaged from involved sites in pulmonary tuberculosis. *Am. J. Respir. Crit. Care Med.* **153**:799-804.
 125. Lewinsohn, D. M., M. R. Alderson, A. L. Briden, S. R. Riddell, S. G. Reed, and K. H. Grabstein. 1998. Characterization of human CD8+ T cells reactive with *Mycobacterium tuberculosis*-infected antigen-presenting cells. *J. Exp. Med.* **187**:1633-1640.
 126. Lin, Y., M. Zhang, F. M. Hofman, J. Gong, and P. F. Barnes. 1996. Absence of a prominent Th2 cytokine response in human tuberculosis. *Infect. Immun.* **64**:1351-1356.
 127. Lipscombe, R. J., D. W. Beatty, M. Ganczakowski, E. A. Goddard, T. Jenkins, Y. L. Lau, A. B. Spurdle, M. Sumiya, J. A. Summerfield, and M. W. Turner. 1996. Mutations in the human mannose-binding protein gene: frequencies in several population groups. *Eur. J. Hum. Genet.* **4**:13-19.
 128. Lu, B., B. J. Rutledge, L. Gu, J. Fiorillo, N. W. Lukacs, S. L. Kunkel, R. North, C. Gerard, and B. J. Rollins. 1998. Abnormalities in monocyte recruitment and cytokine expression in monocyte chemoattractant protein 1-deficient mice. *J. Exp. Med.* **187**:601-608.
 129. Lucey, D. R., M. Clerici, and G. M. Shearer. 1996. Type 1 and type 2 cytokine dysregulation in human infectious, neoplastic, and inflammatory diseases. *Clin. Microbiol. Rev.* **9**:532-562.
 130. Lukacs, N. W., C. L. Addison, J. Gaudie, F. Graham, K. Simpson, R. M. Strieter, K. Warmington, S. W. Chensue, and S. L. Kunkel. 1997. Transgene-induced production of IL-4 alters the development and collagen ex-

- pression of T helper cell 1-type pulmonary granulomas. *J. Immunol.* **158**:4478–4484.
131. **Lurie, M. B.** 1964. Resistance to tuberculosis: experimental studies in native and acquired defense mechanisms. Harvard University Press, Cambridge, Mass.
 132. **Mazzaccaro, R. J., M. Gedde, E. R. Jensen, H. M. van Santen, H. L. Ploegh, K. L. Rock, and B. R. Bloom.** 1996. Major histocompatibility class I presentation of soluble antigen facilitated by *Mycobacterium tuberculosis* infection. *Proc. Natl. Acad. Sci. USA* **93**:11786–11791.
 133. **Means, T. K., E. Lien, A. Yoshimura, S. Wang, D. T. Golenbock, and M. J. Fenton.** 1999. The CD14 ligands lipoarabinomannan and lipopolysaccharide differ in their requirement for Toll-like receptors. *J. Immunol.* **163**:6748–6755.
 134. **Means, T. K., S. Wang, E. Lien, A. Yoshimura, D. T. Golenbock, and M. J. Fenton.** 1999. Human toll-like receptors mediate cellular activation by *Mycobacterium tuberculosis*. *J. Immunol.* **163**:3920–3927.
 135. **Medzhitov, R., P. Preston-Hurlburt, and C. A. Janeway, Jr.** 1997. A human homologue of the Drosophila Toll protein signals activation of adaptive immunity. *Nature* **388**:394–397.
 136. **Menzio, F. D., J. H. Rouse, M. Alavi, M. Laude-Sharp, J. Muller, R. Bischoff, M. J. Brennan, and C. Locht.** 1996. Identification of a heparin-binding hemagglutinin present in mycobacteria. *J. Exp. Med.* **184**:993–1001.
 137. **Micallef, M. J., T. Ohtsuki, K. Kohno, F. Tanabe, S. Ushio, M. Namba, T. Tanimoto, K. Torigoe, M. Fujii, M. Ikeda, S. Fukuda, and M. Kurimoto.** 1996. Interferon-gamma-inducing factor enhances T helper 1 cytokine production by stimulated human T cells: synergism with interleukin-12 for interferon-gamma production. *Eur. J. Immunol.* **26**:1647–1651.
 138. **Mohammed, K. A., N. Nasreen, M. J. Ward, K. K. Mubarak, F. Rodriguez-Panadero, and V. B. Antony.** 1998. Mycobacterium-mediated chemokine expression in pleural mesothelial cells: role of C-C chemokines in tuberculous pleurisy. *J. Infect. Dis.* **178**:1450–1456.
 139. **Mohan, V. P., C. A. Scanga, K. Yu, H. M. Scott, K. E. Tanaka, E. Tsang, M. C. Tsai, J. L. Flynn, and J. Chan.** 2001. Effects of tumor necrosis factor alpha on host immune response in chronic persistent tuberculosis: possible role for limiting pathology. *Infect. Immun.* **69**:1847–1855.
 140. **Molloy, A., P. Laochumroonvorapong, and G. Kaplan.** 1994. Apoptosis, but not necrosis, of infected monocytes is coupled with killing of intracellular bacillus Calmette-Guérin. *J. Exp. Med.* **180**:1499–1509.
 141. **Moody, D. B., M. R. Guy, E. Grant, T. Y. Cheng, M. B. Brenner, G. S. Besra, and S. A. Porcelli.** 2000. CD1b-mediated T cell recognition of a glycolipid antigen generated from mycobacterial lipid and host carbohydrate during infection. *J. Exp. Med.* **192**:965–976.
 142. **Moody, D. B., T. Ulrichs, W. Muhlecker, D. C. Young, S. S. Gurcha, E. Grant, J. P. Rosat, M. B. Brenner, C. E. Costello, G. S. Besra, and S. A. Porcelli.** 2000. CD1c-mediated T-cell recognition of isoprenoid glycolipids in *Mycobacterium tuberculosis* infection. *Nature* **404**:884–888.
 143. **Mosmann, T. R., H. Cherwinski, M. W. Bond, M. A. Giedlin, and R. L. Coffman.** 1986. Two types of murine helper T cell clone. I. Definition according to profiles of lymphokine activities and secreted proteins. *J. Immunol.* **136**:2348–2357.
 144. **Mosmann, T. R., and R. L. Coffman.** 1987. Two types of mouse helper T cell clones: implications for immune regulation. *Immunol. Today* **8**:223–226.
 145. **Murray, P. J., L. Wang, C. Onufryk, R. I. Tepper, and R. A. Young.** 1997. T cell-derived IL-10 antagonizes macrophage function in mycobacterial infection. *J. Immunol.* **158**:315–321.
 146. **Murray, P. J., and R. A. Young.** 1999. Increased antimycobacterial immunity in interleukin-10-deficient mice. *Infect. Immun.* **67**:3087–3095.
 147. **Mustafa, T., S. Phyu, R. Nilsen, G. Bjune, and R. Jonsson.** 1999. Increased expression of Fas ligand on *Mycobacterium tuberculosis* infected macrophages: a potential novel mechanism of immune evasion by *Mycobacterium tuberculosis*? *Inflammation* **23**:507–521.
 148. **Neill, M. A., and S. J. Klebanoff.** 1988. The effect of phenolic glycolipid-1 from *Mycobacterium leprae* on the antimicrobial activity of human macrophages. *J. Exp. Med.* **167**:30–42.
 149. **Netea, M. G., B. J. Kullberg, I. Verschueren, and J. W. Van Der Meer.** 2000. Interleukin-18 induces production of proinflammatory cytokines in mice: no intermediate role for the cytokines of the tumor necrosis factor family and interleukin-1beta. *Eur. J. Immunol.* **30**:3057–3060.
 150. **Neth, O., D. L. Jack, A. W. Dodds, H. Holzel, N. J. Klein, and M. W. Turner.** 2000. Mannose-binding lectin binds to a range of clinically relevant microorganisms and promotes complement deposition. *Infect. Immun.* **68**:688–693.
 151. **Newport, M. J., C. M. Huxley, S. Huston, M. Hawrylowicz, B. A. Oostra, R. Williamson, and M. Levin.** 1996. A mutation in the interferon-gamma receptor gene and susceptibility to mycobacterial infection. *N. Engl. J. Med.* **335**:1941–1949.
 152. **Nicholson, S., M. D. G. Bonecini-Almeida, J. R. Lapa e Silva, C. Nathan, Q. W. Xie, R. Mumford, J. R. Weidner, J. Calaycay, J. Geng, N. Boechat, et al.** 1996. Inducible nitric oxide synthase in pulmonary alveolar macrophages from patients with tuberculosis. *J. Exp. Med.* **183**:2293–2302.
 153. **Nigou, J., C. Zelle-Rieser, M. Gilleron, M. Thurnher, and G. Puzo.** 2001. Mannosylated lipoarabinomannans inhibit IL-12 production by human dendritic cells: evidence for a negative signal delivered through the mannose receptor. *J. Immunol.* **166**:7477–7485.
 154. **North, R. J.** 1998. Mice incapable of making IL-4 or IL-10 display normal resistance to infection with *Mycobacterium tuberculosis*. *Clin. Exp. Immunol.* **113**:55–58.
 155. **North, R. J., R. LaCourse, and L. Ryan.** 1999. Vaccinated mice remain more susceptible to *Mycobacterium tuberculosis* infection initiated via the respiratory route than via the intravenous route. *Infect. Immun.* **67**:2010–2012.
 156. **North, R. J., R. LaCourse, L. Ryan, and P. Gros.** 1999. Consequence of *Nramp1* deletion to *Mycobacterium tuberculosis* infection in mice. *Infect. Immun.* **67**:5811–5814.
 157. **Noss, E. H., R. K. Pai, T. J. Sellati, J. D. Radolf, J. Belisle, D. T. Golenbock, W. H. Boom, and C. V. Harding.** 2001. Toll-like receptor 2-dependent inhibition of macrophage class II MHC expression and antigen processing by 19-kDa lipoprotein of *Mycobacterium tuberculosis*. *J. Immunol.* **167**:910–918.
 158. **Nozaki, Y., Y. Hasegawa, S. Ichiyama, I. Nakashima, and K. Shimokata.** 1997. Mechanism of nitric oxide-dependent killing of *Mycobacterium bovis* BCG in human alveolar macrophages. *Infect. Immun.* **65**:3644–3647.
 159. **Oddo, M., T. Renno, A. Attinger, T. Bakker, H. R. MacDonald, and P. R. Meylan.** 1998. Fas ligand-induced apoptosis of infected human macrophages reduces the viability of intracellular *Mycobacterium tuberculosis*. *J. Immunol.* **160**:5448–5454.
 160. **Ogawa, T., H. Uchida, Y. Kusumoto, Y. Mori, Y. Yamamura, and S. Hamada.** 1991. Increase in tumor necrosis factor alpha- and interleukin-6-secreting cells in peripheral blood mononuclear cells from subjects infected with *Mycobacterium tuberculosis*. *Infect. Immun.* **59**:3021–3025.
 161. **Okamura, H., S. Kashiwamura, H. Tsutsui, T. Yoshimoto, and K. Nakanishi.** 1998. Regulation of interferon-gamma production by IL-12 and IL-18. *Curr. Opin. Immunol.* **10**:259–264.
 162. **O'Neill, L. A., and C. Greene.** 1998. Signal transduction pathways activated by the IL-1 receptor family: ancient signaling machinery in mammals, insects, and plants. *J. Leukoc. Biol.* **63**:650–657.
 163. **Oppmann, B., R. Lesley, B. Blom, J. C. Timans, Y. Xu, B. Hunte, F. Vega, N. Yu, J. Wang, K. Singh, F. Zonin, E. Vaisberg, T. Churakova, M. Liu, D. Gorman, J. Wagner, S. Zurawski, Y. Liu, J. S. Abrams, K. W. Moore, D. Rennick, R. Waal-Malefy, C. Hannum, J. F. Bazan, and R. A. Kastelein.** 2000. Novel p19 protein engages IL-12p40 to form a cytokine, IL-23, with biological activities similar as well as distinct from IL-12. *Immunity* **13**:715–725.
 164. **Orme, I. M., and A. M. Cooper.** 1999. Cytokine/chemokine cascades in immunity to tuberculosis. *Immunol. Today* **20**:307–312.
 165. **Othieno, C., C. S. Hirsch, B. D. Hamilton, K. Wilkinson, J. J. Ellner, and Z. Toossi.** 1999. Interaction of *Mycobacterium tuberculosis*-induced transforming growth factor beta1 and interleukin-10. *Infect. Immun.* **67**:5730–5735.
 166. **Ottenhoff, T. H. M., D. Kumararatne, and J. L. Casanova.** 1998. Novel human immunodeficiencies reveal the essential role of type-1 cytokines in immunity to intracellular bacteria. *Immunol. Today* **19**:491–494.
 167. **Ozinsky, A., D. M. Underhill, J. D. Fontenot, A. M. Hajjar, K. D. Smith, C. B. Wilson, L. Schroeder, and A. Aderem.** 2000. The repertoire for pattern recognition of pathogens by the innate immune system is defined by cooperation between toll-like receptors. *Proc. Natl. Acad. Sci. USA* **97**:13766–13771.
 168. **Pabst, M. J., J. M. Gross, J. P. Brozna, and M. B. Goren.** 1988. Inhibition of macrophage priming by sulfatide from *Mycobacterium tuberculosis*. *J. Immunol.* **140**:634–640.
 169. **Pancholi, P., A. Mirza, N. Bhardwaj, and R. M. Steinman.** 1993. Sequestration from immune CD4+ T cells of mycobacteria growing in human macrophages. *Science* **260**:984–986.
 170. **Pasula, R., J. R. Wright, D. L. Kachel, and W. J. Martin.** 1999. Surfactant protein A suppresses reactive nitrogen intermediates by alveolar macrophages in response to *Mycobacterium tuberculosis*. *J. Clin. Investig.* **103**:483–490.
 171. **Peters, W., H. M. Scott, H. F. Chambers, J. L. Flynn, I. F. Charo, and J. D. Ernst.** 2001. Chemokine receptor 2 serves an early and essential role in resistance to *Mycobacterium tuberculosis*. *Proc. Natl. Acad. Sci. USA* **98**:7958–7963.
 172. **Piacido, R., G. Mancino, A. Amendola, F. Mariani, S. Vendetti, M. Piacentini, A. Sanduzzi, M. L. Bocchino, M. Zembala, and V. Colizzi.** 1997. Apoptosis of human monocytes/macrophages in *Mycobacterium tuberculosis* infection. *J. Pathol.* **181**:31–38.
 173. **Porcelli, S., C. T. Morita, and M. B. Brenner.** 1992. CD1b restricts the response of human CD4+ T lymphocytes to a microbial antigen. *Nature* **360**:593–597.
 174. **Porcelli, S. A., and R. L. Modlin.** 1999. The CD1 system: antigen-presenting molecules for T cell recognition of lipids and glycolipids. *Annu. Rev. Immunol.* **17**:297–329.
 175. **Powrie, F., and R. L. Coffman.** 1993. Inhibition of cell-mediated immunity by IL4 and IL10. *Res. Immunol.* **144**:639–643.
 176. **Puren, A. J., G. Fantuzzi, Y. Gu, M. S. Su, and C. A. Dinarello.** 1998. Interleukin-18 (IFN-gamma-inducing factor) induces IL-8 and IL-1beta via TNFalpha

- production from non-CD14+ human blood mononuclear cells. *J. Clin. Invest.* **101**:711–721.
177. **Ragno, S., M. Romano, S. Howell, D. J. Pappin, P. J. Jenner, and M. J. Colston.** 2001. Changes in gene expression in macrophages infected with *Mycobacterium tuberculosis*: a combined transcriptomic and proteomic approach. *Immunology* **104**:99–108.
 178. **Rajalingam, R., N. K. Mehra, R. D. Mehra, S. Neolia, R. C. Jain, and J. N. Pande.** 1997. HLA class I profile in Asian Indian patients with pulmonary tuberculosis. *Indian J. Exp. Biol.* **35**:1055–1059.
 179. **Ravikumar, M., V. Dheenadhayalan, K. Rajaram, S. S. Lakshmi, P. P. Kumaran, C. N. Paramasivan, K. Balakrishnan, and R. Pitchappan.** 1999. Associations of HLA-DRB1, DQB1 and DPB1 alleles with pulmonary tuberculosis in south India. *Tuber. Lung Dis.* **79**:309–317.
 180. **Roach, D. R., H. Briscoe, B. Saunders, M. P. France, S. Riminton, and W. J. Britton.** 2001. Secreted lymphotoxin-alpha is essential for the control of an intracellular bacterial infection. *J. Exp. Med.* **193**:239–246.
 181. **Roach, T. I., C. H. Barton, D. Chatterjee, and J. M. Blackwell.** 1993. Macrophage activation: lipoarabinomannan from avirulent and virulent strains of *Mycobacterium tuberculosis* differentially induces the early genes c-fos, KC, JE, and tumor necrosis factor-alpha. *J. Immunol.* **150**:1886–1896.
 182. **Rockett, K. A., R. Brookes, I. Udalova, V. Vidal, A. V. Hill, and D. Kwiatkowski.** 1998. 1,25-Dihydroxyvitamin D₃ induces nitric oxide synthase and suppresses growth of *Mycobacterium tuberculosis* in a human macrophage-like cell line. *Infect. Immun.* **66**:5314–5321.
 183. **Rojas, M., L. F. Garcia, J. Nigou, G. Puzo, and M. Olivier.** 2000. Mannosylated lipoarabinomannan antagonizes *Mycobacterium tuberculosis*-induced macrophage apoptosis by altering Ca²⁺-dependent cell signaling. *J. Infect. Dis.* **182**:240–251.
 184. **Rook, G. A., J. Steele, L. Fraher, S. Barker, R. Karmali, J. O'Riordan, and J. Stanford.** 1986. Vitamin D₃, gamma interferon, and control of proliferation of *Mycobacterium tuberculosis* by human monocytes. *Immunology* **57**:159–163.
 185. **Rosat, J. P., E. P. Grant, E. M. Beckman, C. C. Dascher, P. A. Sieling, D. Frederique, R. L. Modlin, S. A. Porcelli, S. T. Furlong, and M. B. Brenner.** 1999. CD1-restricted microbial lipid antigen-specific recognition found in the CD8+ alpha beta T cell pool. *J. Immunol.* **162**:366–371.
 186. **Ruoslahti, E.** 1988. Structure and biology of proteoglycans. *Annu. Rev. Cell Biol.* **4**:229–255.
 187. **Russell, D. G., J. Dant, and S. Sturgill Koszycki.** 1996. *Mycobacterium avium*- and *Mycobacterium tuberculosis*-containing vacuoles are dynamic, fusion-competent vesicles that are accessible to glycosphingolipids from the host cell plasmalemma. *J. Immunol.* **156**:4764–4773.
 188. **Sadek, M. I., E. Sada, Z. Toossi, S. K. Schwander, and E. A. Rich.** 1998. Chemokines induced by infection of mononuclear phagocytes with mycobacteria and present in lung alveoli during active pulmonary tuberculosis. *Am. J. Respir. Cell Mol. Biol.* **19**:513–521.
 189. **Saha, B., G. Das, H. Vohra, N. K. Ganguly, and G. C. Mishra.** 1994. Macrophage-T cell interaction in experimental mycobacterial infection. Selective regulation of co-stimulatory molecules on *Mycobacterium*-infected macrophages and its implication in the suppression of cell-mediated immune response. *Eur. J. Immunol.* **24**:2618–2624.
 190. **Salh, B., R. Wagey, A. Marotta, J. S. Tao, and S. Pelech.** 1998. Activation of phosphatidylinositol 3-kinase, protein kinase B, and p70 S6 kinases in lipopolysaccharide-stimulated Raw 264.7 cells: differential effects of rapamycin, Ly294002, and wortmannin on nitric oxide production. *J. Immunol.* **161**:6947–6954.
 191. **Sanchez, F. O., J. I. Rodriguez, and L. F. Garcia.** 1994. Immune responsiveness and lymphokine production in patients with tuberculosis and healthy controls. *Infect. Immun.* **62**:5673–5678.
 192. **Saunders, B. M., A. A. Frank, I. M. Orme, and A. M. Cooper.** 2000. Interleukin-6 induces early gamma interferon production in the infected lung but is not required for generation of specific immunity to *Mycobacterium tuberculosis* infection. *Infect. Immun.* **68**:3322–3326.
 193. **Schauf, V., W. N. Rom, K. A. Smith, E. P. Sampaio, P. A. Meyn, J. M. Tramontana, Z. A. Cohn, and G. Kaplan.** 1993. Cytokine gene activation and modified responsiveness to interleukin-2 in the blood of tuberculosis patients. *J. Infect. Dis.* **168**:1056–1059.
 194. **Schindler, R., J. Mancilla, S. Endres, R. Ghorbani, S. C. Clark, and C. A. Dinarello.** 1990. Correlations and interactions in the production of interleukin-6 (IL-6), IL-1, and tumor necrosis factor (TNF) in human blood mononuclear cells: IL-6 suppresses IL-1 and TNF. *Blood* **75**:40–47.
 195. **Schlesinger, L. S.** 1993. Macrophage phagocytosis of virulent but not attenuated strains of *Mycobacterium tuberculosis* is mediated by mannose receptors in addition to complement receptors. *J. Immunol.* **150**:2920–2930.
 196. **Schlesinger, L. S., C. G. Bellinger-Kawahara, N. R. Payne, and M. A. Horwitz.** 1990. Phagocytosis of *Mycobacterium tuberculosis* is mediated by human monocyte complement receptors and complement component C3. *J. Immunol.* **144**:2771–2780.
 197. **Schlesinger, L. S., T. M. Kaufman, S. Iyer, S. R. Hull, and L. K. Marchiondo.** 1996. Differences in mannose receptor-mediated uptake of lipoarabinomannan from virulent and attenuated strains of *Mycobacterium tuberculosis* by human macrophages. *J. Immunol.* **157**:4568–4575.
 198. **Schorey, J. S., M. C. Carroll, and E. J. Brown.** 1997. A macrophage invasion mechanism of pathogenic mycobacteria. *Science* **277**:1091–1093.
 199. **Seah, G. T., G. M. Scott, and G. A. Rook.** 2000. Type 2 cytokine gene activation and its relationship to extent of disease in patients with tuberculosis. *J. Infect. Dis.* **181**:385–389.
 200. **Selvaraj, P., P. R. Narayanan, and A. M. Reetha.** 1999. Association of functional mutant homozygotes of the mannose binding protein gene with susceptibility to pulmonary tuberculosis in India. *Tuber. Lung Dis.* **79**:221–227.
 201. **Senaldi, G., S. Yin, C. L. Shaklee, P. F. Piguet, T. W. Mak, and T. R. Ulich.** 1996. *Corynebacterium parvum*- and *Mycobacterium bovis* bacillus Calmette-Guerin-induced granuloma formation is inhibited in TNF receptor I (TNF-RI) knockout mice and by treatment with soluble TNF-RI. *J. Immunol.* **157**:5022–5026.
 202. **Shaw, T. C., L. H. Thomas, and J. S. Friedland.** 2000. Regulation of IL-10 secretion after phagocytosis of *Mycobacterium tuberculosis* by human monocyte cells. *Cytokine* **12**:483–486.
 203. **Shiratsuchi, H., J. L. Johnson, and J. J. Ellner.** 1991. Bidirectional effects of cytokines on the growth of *Mycobacterium avium* within human monocytes. *J. Immunol.* **146**:3165–3170.
 204. **Siddiqui, M. R., S. Meisner, K. Tosh, K. Balakrishnan, S. Ghei, S. E. Fisher, M. Golding, N. P. Shanker Narayan, T. Sitaraman, U. Sengupta, R. Pitchappan, and A. V. Hill.** 2001. A major susceptibility locus for leprosy in India maps to chromosome 10p13. *Nat. Genet.* **27**:439–441.
 205. **Sieling, P. A., D. Chatterjee, S. A. Porcelli, T. I. Prigozy, R. J. Mazzaccaro, T. Soriano, B. R. Bloom, M. B. Brenner, M. Kronenberg, and P. J. Brennan.** 1995. CD1-restricted T cell recognition of microbial lipoglycan antigens. *Science* **269**:227–230.
 206. **Sieling, P. A., M. T. Ochoa, D. Jullien, D. S. Leslie, S. Sabet, J. P. Rosat, A. E. Burdick, T. H. Rea, M. B. Brenner, S. A. Porcelli, and R. L. Modlin.** 2000. Evidence for human CD4+ T cells in the CD1-restricted repertoire: derivation of mycobacteria-reactive T cells from leprosy lesions. *J. Immunol.* **164**:4790–4796.
 207. **Sieling, P. A., X. H. Wang, M. K. Gately, J. L. Oliveros, T. McHugh, P. F. Barnes, S. F. Wolf, L. Golkar, M. Yamamura, Y. Yogi, et al.** 1994. IL-12 regulates T helper type 1 cytokine responses in human infectious disease. *J. Immunol.* **153**:3639–3647.
 208. **Sousa, A. O., R. J. Mazzaccaro, B. R. Russell, F. K. Lee, O. C. Turner, S. Hong, L. Van Kaer, and B. R. Bloom.** 2000. Relative contributions of distinct MHC class I-dependent cell populations in protection to tuberculosis infection in mice. *Proc. Natl. Acad. Sci. USA* **97**:4204–4208.
 209. **Sousa, A. O., J. I. Salem, F. K. Lee, M. C. Vercosa, P. Craud, B. R. Bloom, P. H. Lagrange, and H. L. David.** 1997. An epidemic of tuberculosis with a high rate of tuberculin anergy among a population previously unexposed to tuberculosis, the Yanomami Indians of the Brazilian Amazon. *Proc. Natl. Acad. Sci. USA* **94**:13227–13232.
 210. **Sporn, M. B., A. B. Roberts, L. M. Wakefield, and R. K. Assoian.** 1986. Transforming growth factor-beta: biological function and chemical structure. *Science* **233**:532–534.
 211. **Stead, W. W., J. W. Sennner, W. T. Reddick, and J. P. Lofgren.** 1990. Racial differences in susceptibility to infection by *Mycobacterium tuberculosis*. *N. Engl. J. Med.* **322**:422–427.
 212. **Stenger, S., D. A. Hanson, R. Teitelbaum, P. Dewan, K. R. Niazi, C. J. Froelich, T. Ganz, S. Thoma-Uszynski, A. Melian, C. Bogdan, S. A. Porcelli, B. R. Bloom, A. M. Krensky, and R. L. Modlin.** 1998. An antimicrobial activity of cytolytic T cells mediated by granulysin. *Science* **282**:121–125.
 213. **Stenger, S., R. J. Mazzaccaro, K. Uyemura, S. Cho, P. F. Barnes, J. P. Rosat, A. Sette, M. B. Brenner, S. A. Porcelli, B. R. Bloom, and R. L. Modlin.** 1997. Differential effects of cytolytic T cell subsets on intracellular infection. *Science* **276**:1684–1687.
 214. **Stenger, S., and R. L. Modlin.** 1999. T cell mediated immunity to *Mycobacterium tuberculosis*. *Curr. Opin. Microbiol.* **2**:89–93.
 215. **Sturgill-Koszycki, S., P. H. Schlesinger, P. Chakraborty, P. L. Haddix, H. L. Collins, A. K. Fok, R. D. Allen, S. L. Gluck, J. Heuser, and D. G. Russell.** 1994. Lack of acidification in *Mycobacterium* phagosomes produced by exclusion of the vesicular proton-ATPase. *Science* **263**:678–681.
 216. **Sugawara, I., H. Yamada, H. Kaneko, S. Mizuno, K. Takeda, and S. Akira.** 1999. Role of interleukin-18 (IL-18) in mycobacterial infection in IL-18-gene-disrupted mice. *Infect. Immun.* **67**:2585–2589.
 217. **Sugawara, I., H. Yamada, S. Mizuno, and Y. Iwakura.** 2000. IL-4 is required for defense against mycobacterial infection. *Microbiol. Immunol.* **44**:971–979.
 218. **Surcel, H. M., M. Troye Blomberg, S. Paulie, G. Andersson, C. Moreno, G. Pasvol, and J. Ivanyi.** 1994. Th1/Th2 profiles in tuberculosis, based on the proliferation and cytokine response of blood lymphocytes to mycobacterial antigens. *Immunology* **81**:171–176.
 219. **Taha, R. A., T. C. Kotsimbos, Y. L. Song, D. Menzies, and Q. Hamid.** 1997. IFN-gamma and IL-12 are increased in active compared with inactive tuberculosis. *Am. J. Respir. Crit. Care Med.* **155**:1135–1139.
 220. **Takashima, T., C. Ueta, I. Tsuyuguchi, and S. Kishimoto.** 1990. Production of tumor necrosis factor alpha by monocytes from patients with pulmonary tuberculosis. *Infect. Immun.* **58**:3286–3292.

221. Tanaka, Y., C. T. Morita, Y. Tanaka, E. Nieves, M. B. Brenner, and B. R. Bloom. 1995. Natural and synthetic non-peptide antigens recognized by human gamma delta T cells. *Nature* **375**:155–158.
222. Thoma-Urszyski, S., S. Stenger, O. Takeuchi, M. T. Ochoa, M. Engele, P. A. Sieling, P. F. Barnes, M. Rollinghoff, P. L. Bolcskei, M. Wagner, S. Akira, M. V. Norgard, J. T. Belisle, P. J. Godowski, B. R. Bloom, and R. L. Modlin. 2001. Induction of direct antimicrobial activity through mammalian Toll-like receptors. *Science* **291**:1544–1547.
223. Reference deleted.
224. Thurnher, M., R. Ramoner, G. Gastl, C. Radmayr, G. Bock, M. Herold, H. Klocker, and G. Bartsch. 1997. *Bacillus Calmette-Guerin* mycobacteria stimulate human blood dendritic cells. *Int. J. Cancer* **70**:128–134.
225. Toossi, Z., and J. J. Ellner. 1998. The role of TGF beta in the pathogenesis of human tuberculosis. *Clin. Immunol. Immunopathol.* **87**:107–114.
226. Toossi, Z., P. Gogate, H. Shiratsuchi, T. Young, and J. J. Ellner. 1995. Enhanced production of TGF-beta by blood monocytes from patients with active tuberculosis and presence of TGF-beta in tuberculous granulomatous lung lesions. *J. Immunol.* **154**:465–473.
227. Torres, M., T. Herrera, H. Villareal, E. A. Rich, and E. Sada. 1998. Cytokine profiles for peripheral blood lymphocytes from patients with active pulmonary tuberculosis and healthy household contacts in response to the 30-kilodalton antigen of *Mycobacterium tuberculosis*. *Infect. Immun.* **66**:176–180.
228. Trinchieri, G. 1995. Interleukin-12: a proinflammatory cytokine with immunoregulatory functions that bridge innate resistance and antigen-specific adaptive immunity. *Annu. Rev. Immunol.* **13**:251–276.
229. Tsenova, L., A. Bergtold, V. H. Freedman, R. A. Young, and G. Kaplan. 1999. Tumor necrosis factor alpha is a determinant of pathogenesis and disease progression in mycobacterial infection in the central nervous system. *Proc. Natl. Acad. Sci. USA* **96**:5657–5662.
230. Turner, M. W. 1996. The lectin pathway of complement activation. *Res. Immunol.* **147**:110–115.
231. Underhill, D. M., A. Ozinsky, A. M. Hajjar, A. Stevens, C. B. Wilson, M. Bassetti, and A. Aderem. 1999. The Toll-like receptor 2 is recruited to macrophage phagosomes and discriminates between pathogens. *Nature* **401**:811–815.
232. Underhill, D. M., A. Ozinsky, K. D. Smith, and A. Aderem. 1999. Toll-like receptor-2 mediates mycobacteria-induced proinflammatory signaling in macrophages. *Proc. Natl. Acad. Sci. USA* **96**:14459–14463.
233. Valone, S. E., E. A. Rich, R. S. Wallis, and J. J. Ellner. 1988. Expression of tumor necrosis factor in vitro by human mononuclear phagocytes stimulated with whole *Mycobacterium bovis* BCG and mycobacterial antigens. *Infect. Immun.* **56**:3313–3315.
234. van Crevel, R., E. Karyadi, F. Preyers, M. Leenders, B. J. Kullberg, R. H. H. Nelwan, and J. W. M. van der Meer. 2000. Increased production of interleukin 4 by CD4+ and CD8+ T cells from patients with tuberculosis is related to the presence of pulmonary cavities. *J. Infect. Dis.* **181**:1194–1197.
235. van Crevel, R., J. Van der Ven Jongekrijg, M. G. Netea, W. de Lange, B. J. Kullberg, and J. W. M. van der Meer. 1999. Disease-specific ex vivo stimulation of whole blood for cytokine production: applications in the study of tuberculosis. *J. Immunol. Methods* **222**:145–153.
236. van Crevel, R., A. G. Vonk, M. G. Netea, B. J. Kullberg, and J. W. Meer. 2000. Modulation of LPS-, PHA- and M. tuberculosis-mediated cytokine production by pentoxifylline and thalidomide. *Eur. Cytokine Netw.* **11**:574–579.
237. VanHeyningen, T. K., H. L. Collins, and D. G. Russell. 1997. IL-6 produced by macrophages infected with *Mycobacterium* species suppresses T cell responses. *J. Immunol.* **158**:330–337.
238. Vankayalapati, R., B. Wizel, S. E. Weis, B. Samten, W. M. Girard, and P. F. Barnes. 2000. Production of interleukin-18 in human tuberculosis. *J. Infect. Dis.* **182**:234–239.
239. van Rie, A., R. Warren, M. Richardson, T. C. Victor, R. P. Gie, D. A. Enarson, N. Beyers, and P. D. van Helden. 1999. Exogenous reinfection as a cause of recurrent tuberculosis after curative treatment. *N. Engl. J. Med.* **341**:1174–1179.
240. Visintin, A., A. Mazzoni, J. H. Spitzer, D. H. Wyllie, S. K. Dower, and D. M. Segal. 2001. Regulation of toll-like receptors in human monocytes and dendritic cells. *J. Immunol.* **166**:249–255.
241. Wakeham, J., J. Wang, J. Magram, K. Croitoru, R. Harkness, P. Dunn, A. Zganiacz, and Z. Xing. 1998. Lack of both types 1 and 2 cytokines, tissue inflammatory responses, and immune protection during pulmonary infection by *Mycobacterium bovis* bacille Calmette-Guerin in IL-12-deficient mice. *J. Immunol.* **160**:6101–6111.
242. Wang, J., J. Wakeham, R. Harkness, and Z. Xing. 1999. Macrophages are a significant source of type 1 cytokines during mycobacterial infection. *J. Clin. Investig.* **103**:1023–1029.
243. Wang, T., W. P. Lafuse, and B. S. Zwilling. 2000. Regulation of toll-like receptor 2 expression by macrophages following mycobacterium avium infection. *J. Immunol.* **165**:6308–6313.
244. Weikert, L. F., K. Edwards, Z. C. Chronos, C. Hager, L. Hoffman, and V. L. Shepherd. 1997. SP-A enhances uptake of bacillus Calmette-Guerin by macrophages through a specific SP-A receptor. *Am. J. Physiol.* **272**:L989–L995.
245. Wickremasinghe, M. L., L. H. Thomas, and J. S. Friedland. 1999. Pulmonary epithelial cells are a source of IL-8 in the response to *Mycobacterium tuberculosis*: essential role of IL-1 from infected monocytes in a NF-kappa B-dependent network. *J. Immunol.* **163**:3936–3947.
246. Wiker, H. G., and M. Harboe. 1992. The antigen 85 complex: a major secretion product of *Mycobacterium tuberculosis*. *Microbiol. Rev.* **56**:648–661.
247. Wilkinson, R. J., M. Llewelyn, Z. Toossi, P. Patel, G. Pasvol, A. Lalvani, D. Wright, M. Latif, and R. Davidson. 2000. Influence of vitamin D deficiency and vitamin D receptor polymorphisms on tuberculosis among Gujarati Asians in west London: a case-control study. *Lancet* **355**:618–621.
248. Wilkinson, R. J., P. Patel, M. Llewelyn, C. S. Hirsch, G. Pasvol, G. Snounou, R. Davidson, and Z. Toossi. 1999. Influence of polymorphism in the genes for the interleukin (IL)-1 receptor antagonist and IL-1β on tuberculosis. *J. Exp. Med.* **189**:1863–1874.
249. Winkelstein, J. A., M. C. Marino, R. B. Johnston, Jr., J. Boyle, J. Curnutte, J. I. Gallin, H. L. Malech, S. M. Holland, H. Ochs, P. Quie, R. H. Buckley, C. B. Foster, S. J. Chanock, and H. Dickler. 2000. Chronic granulomatous disease. Report on a national registry of 368 patients. *Medicine (Baltimore)* **79**:155–169.
250. Yamada, H., S. Mizumo, R. Horai, Y. Iwakura, and I. Sugawara. 2000. Protective role of interleukin-1 in mycobacterial infection in IL-1 alpha/beta double-knockout mice. *Lab. Investig.* **80**:759–767.
251. Yoshimura, A., E. Lien, R. R. Ingalls, E. Tuomanen, R. Dziarski, and D. Golenbock. 1999. Cutting edge: recognition of Gram-positive bacterial cell wall components by the innate immune system occurs via Toll-like receptor 2. *J. Immunol.* **163**:1–5.
252. Yu, W., E. Soprana, G. Cosentino, M. Volta, H. S. Lichenstein, G. Viale, and D. Vercelli. 1998. Soluble CD14(1–152) confers responsiveness to both lipooligosaccharide and lipopolysaccharide in a novel HL-60 cell bioassay. *J. Immunol.* **161**:4244–4251.
253. Zaffran, Y., and J. J. Ellner. 1997. A coat of many complements. *Nat. Med.* **3**:1078–1079.
254. Zhang, M., M. K. Gately, E. Wang, J. Gong, S. F. Wolf, S. Lu, R. L. Modlin, and P. F. Barnes. 1994. Interleukin 12 at the site of disease in tuberculosis. *J. Clin. Investig.* **93**:1733–1739.
255. Zhang, M., J. Gong, D. H. Presky, W. Xue, and P. F. Barnes. 1999. Expression of the IL-12 receptor beta 1 and beta 2 subunits in human tuberculosis. *J. Immunol.* **162**:2441–2447.
256. Zhang, Y., M. Broser, H. Cohen, M. Bodkin, K. Law, J. Reibman, and W. N. Rom. 1995. Enhanced interleukin-8 release and gene expression in macrophages after exposure to *Mycobacterium tuberculosis* and its components. *J. Clin. Investig.* **95**:586–592.
257. Zhang, Y., M. Doerfler, T. C. Lee, B. Guillemin, and W. N. Rom. 1993. Mechanisms of stimulation of interleukin-1 beta and tumor necrosis factor-alpha by *Mycobacterium tuberculosis* components. *J. Clin. Investig.* **91**:2076–2083.
258. Zimmerli, S., S. Edwards, and J. D. Ernst. 1996. Selective receptor blockade during phagocytosis does not alter the survival and growth of *Mycobacterium tuberculosis* in human macrophages. *Am. J. Respir. Cell Mol. Biol.* **15**:760–770.
259. Zlotnik, A., and O. Yoshie. 2000. Chemokines: a new classification system and their role in immunity. *Immunity* **12**:121–127.
260. Zwilling, B. S., D. E. Kuhn, L. Wikoff, D. Brown, and W. Lafuse. 1999. Role of iron in *Nramp1*-mediated inhibition of mycobacterial growth. *Infect. Immun.* **67**:1386–1392.