

## CORRECTIONS

Correlated changes of some enzyme activities and cofactor and substrate contents of pea cotyledon tissue during germination

By A. P. BROWN and J. L. WRAY

Volume 108 (1968)

p. 442, column 1, Fig 9: on vertical axis for NAD or NADP ( $\mu$ moles/g. of cotyledon) read  
NAD or NADP ( $m\mu$ moles/g. of cotyledon)

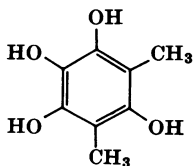
Incorporation of 5-methylorocylaldehyde and methionine into the acetogenin (polyketide) gliorosein in *Gliocladium roseum*

I.M.I. 93065

By M. W. STEWARD and N. M. PACKTER

Volume 109 (1968)

p. 9, scheme 2: third formula from right-hand side of page:



should be replaced by

