

Degradation of human thymidine kinase is dependent on serine-13 phosphorylation: involvement of the SCF-mediated pathway

Po-Yuan KE¹, Che-Chuan YANG¹, I-Chun TSAI and Zee-Fen CHANG²

Graduate Institute of Biochemistry and Molecular Biology, College of Medicine, National Taiwan University, No. 1 section 1 Jen-Ai Road, Taipei, 100, Taiwan, Republic of China

The expression level of human thymidine kinase (hTK) is regulated in a cell-cycle-dependent manner. One of the mechanisms responsible for the fluctuation of TK expression in the cell cycle can be attributed to protein degradation during mitosis. Given the facts that cell-cycle-dependent proteolysis is highly conserved in all eukaryotes and yeast cells are an excellent model system for protein-degradation study, here we report on the use of *Saccharomyces cerevisiae* and *Schizosaccharomyces pombe* to investigate the degradation signal and mechanism required for hTK degradation. We found that the stability of hTK is significantly reduced in mitotic yeasts. Previously, we have observed that Ser-13 is the site of mitotic phosphorylation of hTK in HeLa cells [Chang, Huang and Chi (1998) *J. Biol. Chem.* **273**, 12095–12100]. Here, we further provide evidence

that the replacement of Ser-13 by Ala (S13A) renders hTK stable in *S. pombe* and *S. cerevisiae*. Most interestingly, we demonstrated that degradation of hTK is impaired in *S. cerevisiae* carrying a temperature-sensitive mutation in the proteasomal gene *pre1-1* or the Skp1-Cullin-1/CDC53-F-box (SCF) complex gene *cdc34* or *cdc53*, suggesting the contribution of the SCF-mediated pathway in hTK degradation. As phosphorylation is a prerequisite signal for SCF recognition, our results implied that phosphorylation of Ser-13 probably contributes to the degradation signal for hTK via the SCF-mediated proteolytic pathway.

Key words: cell cycle, mitosis, proteasome, proteolysis.

INTRODUCTION

Thymidine kinase (TK) is an enzyme that catalyses the transfer of the terminal phosphate of ATP to the 5'-hydroxyl group of thymidine to form dTMP, which is the salvage pathway for dTTP synthesis. The amount of TK is significantly elevated in cells during transition from G₁ to the S phase through the transcriptional and post-transcriptional processing controls [1,2]. Diverse experimental evidence has indicated that increases in both transcriptional and translational efficiencies are important for TK induction during G₁-S transition [3–10]. The elevated level of TK is then rapidly decreased by degradation during mitosis in order to return to lower levels in the next G₁ phase of the cell cycle. It has been shown that deletion of the C-terminal 40 amino acids of human TK (hTK) completely abolishes cell-cycle regulation and stabilizes the protein throughout the cell cycle [11–13]. Since then the molecular mechanism by which hTK is degraded during the cell cycle has not been made clear. Particularly, it is still uncertain whether hTK degradation is via a proteasomal pathway.

Our laboratory has previously shown that TK is phosphorylated in human promyeloleukemia cells in response to growth stimulation [14]. When cells were M-phase-arrested by treatment with nocodazole, a microtubule-depolymerizing drug, hTK became hyperphosphorylated in HL-60, K562 and HeLa cells [15]. We have further established that Ser-13 is involved in mitotic phosphorylation of hTK by cyclin-dependent kinase (CDK) in mitotically blocked HeLa cells [16]. As hTK is degraded when cells are released from the G₂/M blockade, we speculate that

phosphorylation may play a role in mitotic degradation of hTK. However, the role of phosphorylation in hTK degradation still remains elusive, since the progress of this study has been hampered by the fact that it has been difficult to detect hTK degradation when hTK is artificially overexpressed under the control of a constitutive cytomegalovirus ('CMV') or simian virus 40 ('SV40') early promoter in mammalian cells. It has also been shown that the expressed level of hTK mRNA in mammalian cells can affect its regulation at the protein level [17]. In addition, we found that it is difficult to consistently control the artificial expressed level of TK mRNA in mammalian cells. Given that yeast does not contain endogenous TK, and that CDKs and the protein turnover machinery among all eukaryotes are highly conserved, we used *Saccharomyces cerevisiae* and *Schizosaccharomyces pombe* as the study systems to explore the mechanism responsible for hTK degradation in the cell cycle.

It is well established that ubiquitin-dependent proteasomal proteolysis plays a pervasive role in protein destruction in a cell-cycle-dependent manner [18,19]. Formation of ubiquitin-protein conjugates requires the action of E1, E2 and E3 enzymes [20,21]. We now know that the SCF complex (Skp1-Cullin-1/CDC53-F-box) and the anaphase-promoting complex (APC)/cyclosome are two ubiquitin ligases (E3) that play a crucial role in eukaryotic cell-cycle control [22–26]. As various temperature-sensitive mutants of *S. cerevisiae* that can be impaired conditionally with respect to components of the proteasome, SCF and APC/cyclosome complexes are available [27–29], in this report we used this genetic system to demonstrate that the SCF-mediated pathway contributes to hTK degradation and that Ser-13 is

Abbreviations used: APC, anaphase-promoting complex; CDK, cyclin-dependent kinase; hTK, human TK; SCF complex, Skp1-Cullin-1/CDC53-F-box; TK, thymidine kinase.

¹ These authors contributed equally to this work.

² To whom correspondence should be addressed (e-mail ZFCHANG@ha.mc.ntu.edu.tw).

involved in its degradation. We also used *S. pombe* to show that the hTK degradation rate is increased in the mitotic phase and that phosphorylation on Ser-13 plays a critical role in its mitotic degradation. The results obtained in this study suggest the feasibility of using yeast genetics to search for the regulatory F-box protein controlling degradation of TK during the cell cycle [30–32].

EXPERIMENTAL

Materials

Anti-hTK polyclonal antibody was prepared as described previously [15]. Anti-cdc2 polyclonal antibody was obtained from Santa Cruz Biotechnology (Santa Cruz, CA, U.S.A.). Hydroxyurea, thiamine, RNase A, proteinase K, propidium iodide and the glass beads for yeast-cell-extract preparation were purchased from Sigma (St. Louis, MO, U.S.A.). Amino acid mixture supplement was obtained from Clontech (Palo Alto, CA, U.S.A.).

Plasmids constructions and site-directed mutagenesis

For *S. pombe* experiments, cDNA encoding hTK and some of its mutants were amplified by PCR using pBSTK with or without Ser-13 mutation as the templates [16] and subcloned into the *SalI* site of expression vector pREP1 under control of the thiamine-repressible *nmt1* promoter [33,34]. For *S. cerevisiae* experiments, hTK expression plasmid was constructed by inserting the *BamHI* restriction fragment containing the hTK cDNA from pREP1-TK (wild-type) and pREP1-TK (S13A) into the pB566 expression vector. For hTK expression in *pre1*-defective and its parental strain, the *KpnI/SacI* fragment containing cDNA of the hTK from pB566-TK was subcloned into the pRS425 expression vector, yielding pRS425-TK. The expression of hTK in pB566-TK and pRS425-TK was under control of the GAL1 promoter [35].

For Ser-13 mutation, site-directed mutagenesis was performed as described by Chang et al. [16]. pBSTK was used as a template for site-directed mutagenesis. The following primers were synthesized: primer 1, 5'-CTGCCCGGCGCCCCAGCAAGACCCGGGGG-3'; and primer 2, 5'-CTGCCCGGTGACCCCAAGACCCGGGGG-3'. The primers were designed with the underlined nucleotides being changed to convert Ser-13 into Ala

and Asp, respectively. The DNA sequence of each mutated plasmid used for this study was confirmed by dideoxynucleotide sequencing.

Yeast strains and media

All *S. pombe* and *S. cerevisiae* strains used in the study are listed in Table 1. *S. pombe* (*cdc25-22*) and its parental strain were kindly provided by Dr Jin-Yuan Su (National Yang-Ming University, Taipei, Taiwan, Republic of China). *S. cerevisiae* mutants and corresponding parental strains were kindly given by Dr Stephen J. Elledge (Baylor College of Medicine, Houston, TX, U.S.A.) and Dr Yu-Li Jung (Tzu-Chi University, Hualien, Taiwan, Republic of China). *S. pombe* yeasts were cultured in YES medium [3% glucose/0.5% (w/v) yeast extract/amino acids mixture] at 25 °C. Transformed clones were cultured in minimum EMM medium (Bio101). *S. cerevisiae* yeasts were cultured in complete YPAD medium [1% (w/v) yeast extract/2% (w/v) bactopectone/100 µg/ml adenine/2% (w/v) glucose] at 25 °C. Transformed clones were cultured in minimal SD medium [yeast nitrogen base without amino acids/2% (w/v) raffinose] supplemented with appropriate amino acids.

Cell-cycle synchronization and FACS analysis

S. pombe temperature-sensitive mutant *cdc25-22* cultures were grown to the logarithmic phase (D_{600} , 0.3–0.4) at 25 °C prior to cell-cycle arrest. To arrest at the G_2/M phase, yeasts were shifted to 36 °C for 4 h to disrupt *cdc25* phosphatase gene expression. For release from the G_2/M phase, cultures were shifted to 25 °C, followed by examining septated cell formation to confirm cell-cycle progression. For *S. cerevisiae* synchronization experiments, cultures were grown to a D_{600} value of 0.5, followed by adding hydroxyurea (200 mM) into the culture medium to arrest cells at the S phase. To re-enter the cell cycle, hydroxyurea-treated yeast cells were washed twice with fresh SD medium and resuspended in SD medium without hydroxyurea.

Yeast cells (5×10^6) were collected and centrifuged at 1000 g and 4 °C for 5 min. Cell pellets were resuspended in 500 µl of buffer A [0.5 M EDTA/0.3% (w/v) NaN₃] followed by centrifugation at 1000 g at 4 °C for 5 min. Cell pellets were then resuspended in sterilized H₂O and fixed in cold ethanol at a final concentration of 70% (v/v) at 4 °C overnight, after which cells

Table 1 Yeast strains used in this study

Strain	Genotype	Origin
<i>S. cerevisiae</i>		
JJY236	MATa, W303a background, <i>sst1Δ::URA3</i>	Dr Yu-Li Jung
JJY240	MATa, W303a background, <i>sst1Δ::URA3, cdc53-1 ts</i>	
JJY92	MATa, <i>ade2-1, trp1-1, can1-100, leu2-3,112, his3-11,15, GAL+, psi+, ura3, bar1</i>	Dr Yu-Li Jung
JJY91	MATa, <i>cdc16-123, ade2-1, trp1-1, can1-100, leu2-3,112, his3-11,15, GAL+, psi+, ura3, bar1</i>	
Jy242	MATa, <i>ade2, leu2, ura2, his3, trp1, lys2, bar1Δ</i>	Dr Yu-Li Jung
Jy244	MATa, <i>cdc34-2, ade2, leu2, ura2, his3, trp1, lys2, bar1Δ</i>	
Jy80	MATa, <i>pre4-1, leu2, his3, bar1Δ</i>	Dr Yu-Li Jung
Jy81	MATa, <i>pre1-1, pre4-1, leu2, his3, bar1Δ</i>	
Y80	MATa, <i>ade2, ura3, leu2, his3, trp1</i>	Dr Stephen J. Elledge
<i>cdc4⁻</i>	MATa, <i>cdc4-1, ade2, ura3, leu2, his3, trp1</i>	
<i>S. pombe</i>		
JP68	<i>h+, leu1-32, cdc25-22</i>	Dr Jin-Yuan Su
JP73	<i>h+, leu1-32</i>	

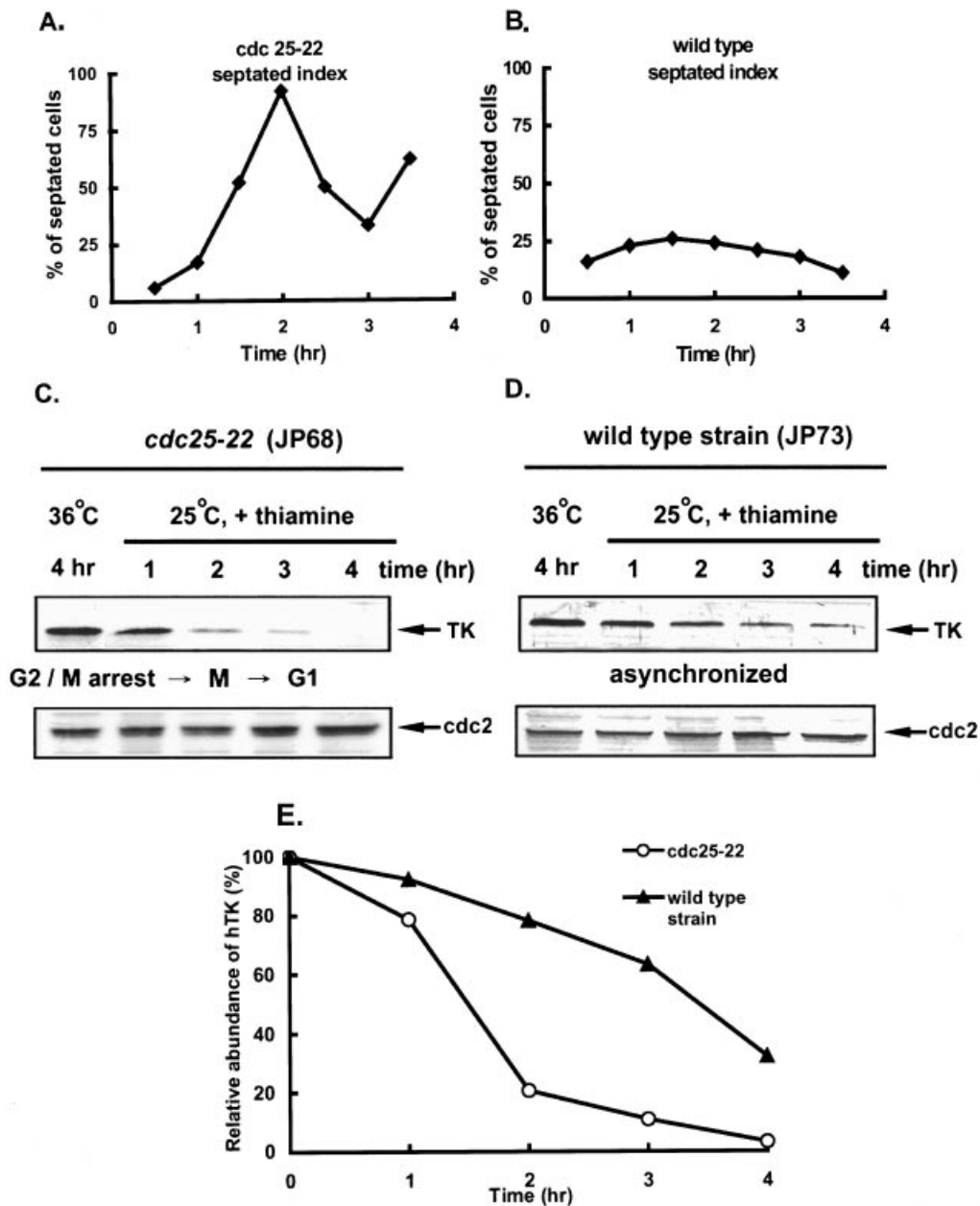


Figure 1 Degradation rate of hTK expressed in *S. pombe* is increased in the mitotic phase

(A, B) For both *cdc25-22* mutant and wild-type yeasts, cells were grown at 36 °C for 4 h and shifted to 25 °C. The percentage of cells with septum formation was determined by observation using dark-field microscopy. (C) *cdc25-22 S. pombe* (JP68) strain cells were transformed with the pREP1 plasmid expressing hTK. The half-life of hTK was measured by shifting cells to 36 °C for 4 h to inactivate the mutant *cdc25* gene, followed by switching to 25 °C and adding thiamine to acutely repress *de novo* expression from the *nmt1* promoter. Degradation of hTK was monitored by immunoblotting with hTK antibody. The same membrane was blotted with *cdc2* kinase antibody to confirm equal loading of protein. (D) Expression and degradation of hTK in wild-type *S. pombe* (JP73) strain were performed as above. (E) The relative abundance of hTK polypeptide was determined by subjecting the immunoblotting membrane to densitometric scanning and normalized by the *cdc2* signals in the same sample.

were pelleted and washed twice with buffer containing 50 mM sodium citrate (pH 7.2) and resuspended in 1 ml of sodium citrate (50 mM). Incubation of the cell suspension solution with RNase A at a final concentration of 250 µg/ml at 50 °C was carried out for 1 h, followed by addition of proteinase K to a final concentration of 100 µg/ml for another 1 h. Cells were then washed twice with 50 mM sodium citrate prior to incubation with propidium iodide (20 µg/ml) in the dark for 10 min. Cell-

cycle analysis was performed using a Becton Dickinson FACScan flow cytometer, and the data were analysed by use of CellQuest software.

Protein expression, repression and protein stability experiments

For repression of pREP1-TK expression, cells were grown in EMM medium by adding thiamine (4 µM) to inactivate the *nmt1*

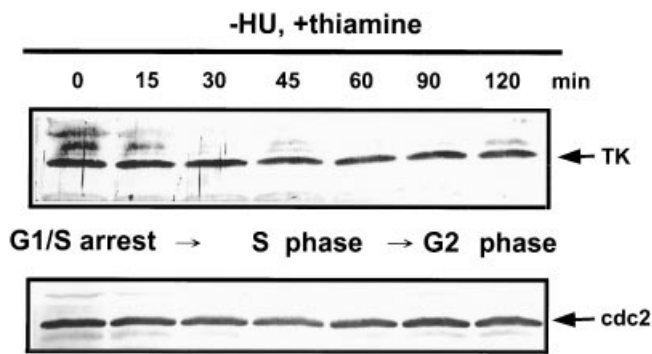


Figure 2 Degradation of hTK in *cdc25-22 S. pombe* (JP68) in the S phase

cdc25-22 S. pombe (JP68) strain cells expressing hTK were arrested at G₁/S phase by adding hydroxyurea (HU, 200 mM) to the growth medium when incubated at 25 °C for 8 h. Cells were then released from G₁/S arrest by washing out the hydroxyurea, followed by addition of thiamine in the fresh growth medium to repress the *GAL1* promoter to monitor hTK degradation at the indicated time points.

promoter. For induction of the *GAL1* promoter, cells were grown in SD medium by adding galactose to a final concentration of 3% (w/v). After induction, transcriptional repression was achieved by adding glucose to a final concentration of 3% (w/v),

followed by harvesting yeast cell extracts to analyse protein levels at different time points.

Cell extracts and immunoblotting analysis

Yeast cell extracts were prepared by being beaten with beads in lysis buffer [8 M urea/5% (w/v) SDS/40 mM Tris/HCl (pH 6.8)/0.1 mM EDTA/0.1% (v/v) β -mercaptoethanol/1 mM PMSF/5 mM NaF/10 μ g/ml leupeptin/5 μ g/ml aprotinin/1 μ g/ml pepstatin]. After vigorous vortex mixing, samples were centrifuged at 8000 *g* for 10 min and the supernatant was used as the cell extract for further analysis. Equal amounts of protein were resolved on SDS/PAGE [12% (w/v) gel], followed by electrophoretic transfer to PVDF membrane (Millipore). After blocking with 5% (w/v) powdered non-fat milk, the membrane was incubated with anti-hTK polyclonal antibody (1:8000) [15] for 4 h, and treated for 1 h with alkaline phosphatase-conjugated anti-rabbit IgG antibody or horseradish peroxidase-conjugated anti-rabbit IgG antibody (Santa Cruz Biotechnology). The alkaline phosphatase colour development and ECL[®] detection for horseradish peroxidase were performed according to the manufacturer's instructions. The detection of *cdc2* kinase with an anti-*cdc2* polyclonal antibody (Santa Cruz Biotechnology) at a 1:2000 dilution on the same blot was used as an internal control. Quantification of bands was performed with a densitometer and ImageQuant Image Analysis Software (Amersham Biosciences). The degradation rate of hTK was measured by subjecting the immunoblotting membrane to

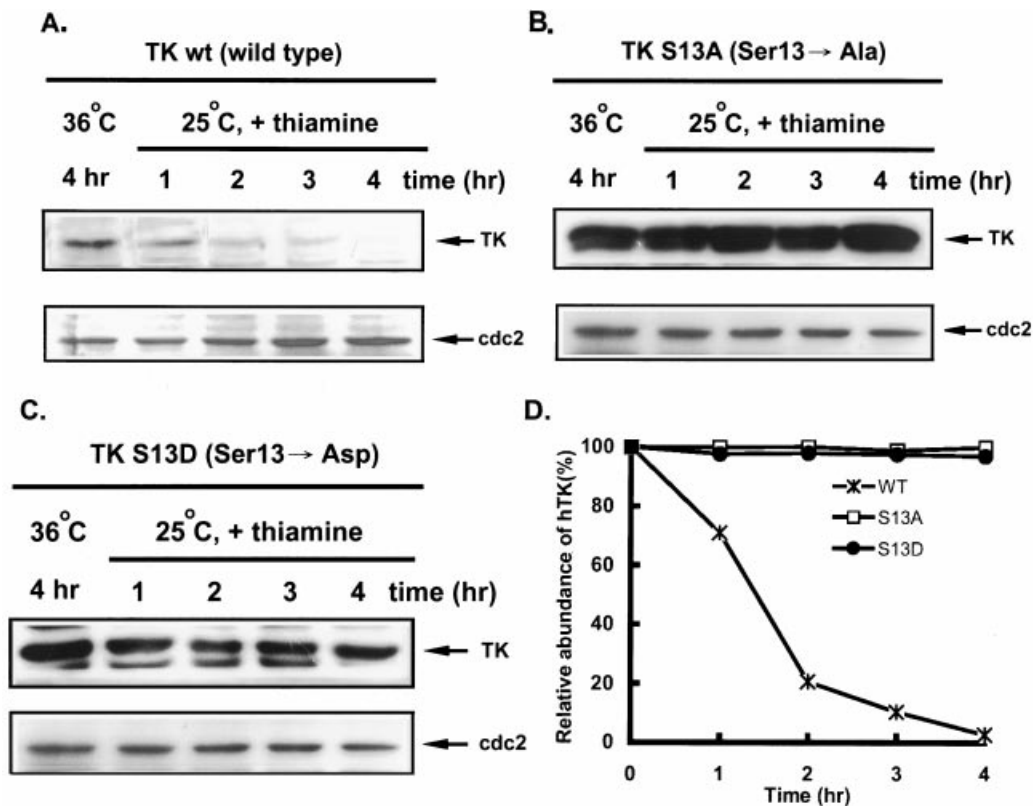


Figure 3 Ser-13 of hTK is important for its degradation in mitotic fission yeasts

Expression of the hTK wild-type (wt), or S13A or S13D mutants under the control of the *nmt1* promoter in *S. pombe* (*cdc25-22*) (JP68) and measurement of hTK degradation were performed as described in the legend to Figure 1.

densitometric scanning to determine hTK abundance and normalized against the internal control *cdc2* signals.

RESULTS

Mitotic degradation of hTK in *S. pombe*

All yeast strains used for this study are listed in Table 1. A temperature-sensitive mutant of *S. pombe* (*cdc25-22*) [33,34] that can be arrested in the G₂/M phase at 36 °C was used to examine whether the degradation rate of hTK is increased during mitosis in yeast. When cells were incubated at 36 °C for 4 h, all *S. pombe* (*cdc25-22*) cells became elongated without septum formation, indicating G₂/M arrest. Following a temperature shift to 25 °C for 2 h, we observed septum formation in these cells, representing mitosis progression, which reached a peak level of 95–100% for *S. pombe* (*cdc25-22*) as compared with 5–25% throughout the

same experimental period for the wild-type yeasts (compare Figures 1A and 1B). We then used this system to examine whether there is an increase in hTK degradation rate at the mitotic phase in yeast. The expression of hTK in *S. pombe* was under the control of the thiamine-repressible *nmt1* promoter. We found that hTK is accumulated in *S. pombe* (*cdc25-22*), which were grown at 36 °C for 4 h (Figure 1C, lane 1). Upon shift to 25 °C, thiamine was added to the medium to repress new expression of hTK, and hTK proteolysis was monitored by immunoblotting analysis. We observed that the level of hTK significantly decreased in *S. pombe* (*cdc25-22*) within 2 h (Figure 1C, lanes 2–5), concomitant with the timing of cell septation (Figure 1A). As for wild-type *S. pombe* that cannot be synchronized in the G₂/M phase under these experimental conditions, the half-life of hTK was more than 3 h (Figure 1D). Because the regulation of *cdc2* kinase is mainly controlled by its

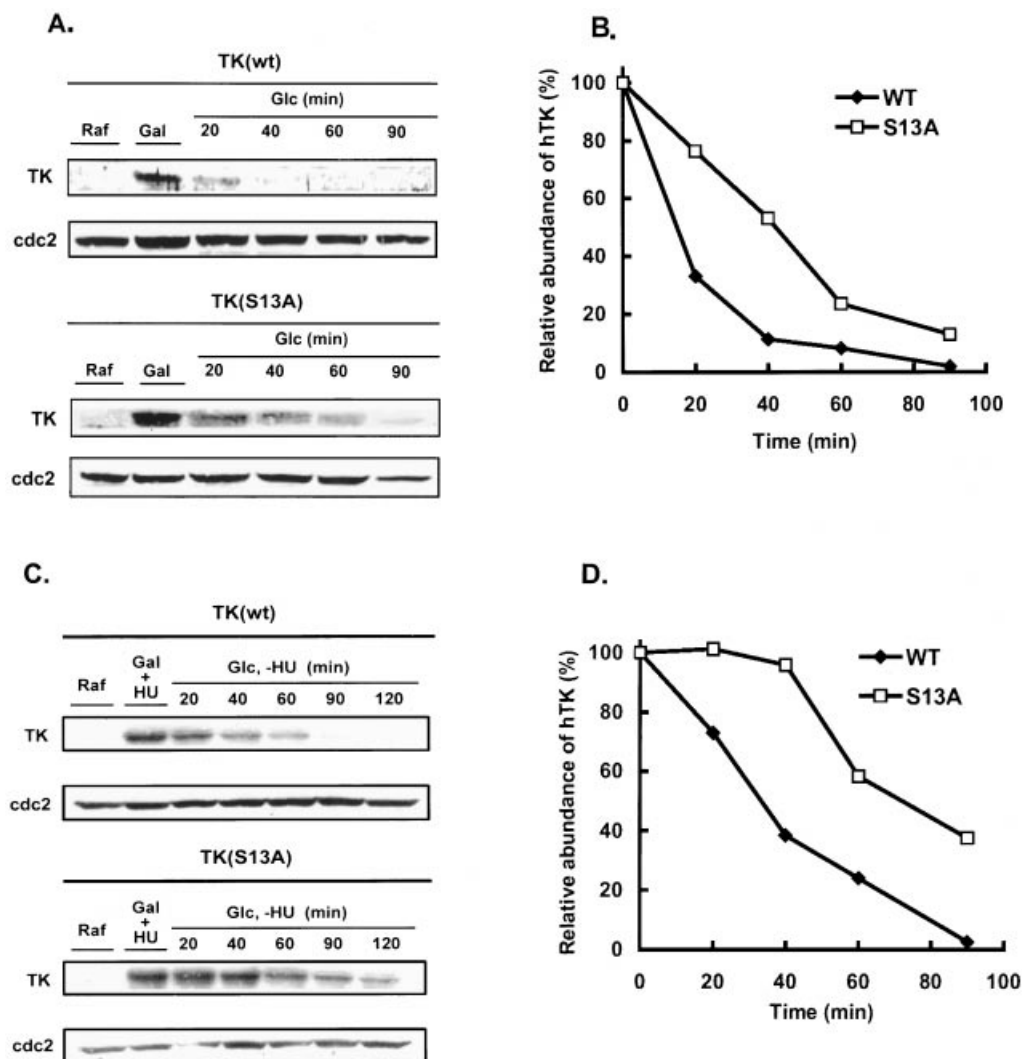


Figure 4 Expression and degradation of hTK in asynchronized and synchronized *S. cerevisiae*

Parental strain of *S. cerevisiae* was transformed with a plasmid expressing wild-type (wt) or S13A mutant hTKs. (A) Expression of hTK was induced for 1 h by adding galactose (Gal) to the medium and was repressed by addition of glucose (Glc) at time 0. Cells were harvested at the indicated times for immunoblotting analysis. (B) The relative half-life of hTK (wild-type versus S13A) was determined by densitometric scanning of the immunoblots from (A) as described in the legend to Figure 1. (C) Yeasts expressing wild-type hTK and the S13A mutant were arrested in the S phase by adding hydroxyurea (HU, 200 mM) to the growth medium during galactose induction. At time 0 cells were washed to remove hydroxyurea and glucose was added to repress the *GAL1* promoter to monitor hTK degradation as described above. (D) The relative half-life of hTK (wild-type versus S13A) was determined by densitometric scanning of immunoblots from (C) as described in the legend to Figure 1. Raf, raffinose.

phosphorylation status and its associated proteins, but not by its own expressed level in the cell cycle, we used *cdc2* kinase as the internal control for all the immunoblotting experiments. The level of *cdc2* kinase was similar in the yeasts during all experimental conditions, indicating that hTK degradation in *cdc25-22* yeasts is a rather specific event. By densitometric scanning, the half-life of hTK in *S. pombe* at 25 °C in these mitotic cells (*cdc25-22*) was 90 min, and 200 min for asynchronized wild-type cells that contain a mixture of G₁, G₁/S, S, G₂ and G₂/M populations (Figure 1E). We also arrested *S. pombe* (*cdc25-22*) in the G₁/S phase by hydroxyurea treatment for 8 h at 25 °C. By washing out hydroxyurea to resume the S-phase progression, we found that about 70% of cells entered the G₂ phase in 90 min, as judged by cell elongation. We then tested whether hTK was degraded during the S-phase progression under these experimental conditions. It appeared that hTK is very stable within this period of S-phase progression (Figure 2), which is in contrast with the clear reduction of hTK during mitotic progression. Thus, similar to that in mammalian cells, the rate of hTK degradation in *S. pombe* can be significantly increased in the mitotic phase.

Ser-13 mutation reduces the rate of hTK degradation in fission yeast

As it has been shown that hTK is phosphorylated by *cdc2* kinase on Ser-13 [16] and is degraded faster in the mitotic phase in human cells [8,12], we then examined whether Ser-13 plays a crucial role in mitotic degradation of TK in *S. pombe*. Remarkably, we found that mutation of Ser-13 → Ala (S13A) not only resulted in elevated accumulation of hTK in *S. pombe*, but also reduced the rate of hTK degradation during mitosis (compare Figures 3A and 3B). As Ser-13 is the site for *cdc2* kinase phosphorylation during G₂/M arrest, we then asked the question whether a mutation of Ser-13 → Asp can mimic a charge change due to phosphorylation to render TK susceptible for degradation. It appeared that Ser-13 → Asp mutation also caused an effect similar to that of Ser-13 → Ala on TK stability in the mitotic phase (Figure 3C). Therefore, the degradation signal of hTK is not merely due to a change of charge at the position of Ser-13 (Figure 3D).

Degradation of hTK in *S. cerevisiae* is also sensitive to Ser-13 mutation

To analyse further the proteolysis of hTK in *S. cerevisiae*, we subcloned hTK into an inducible expression vector under the control of the GAL1 promoter and transformed this construct into *S. cerevisiae*. TK expression can be induced by galactose and turned off in *S. cerevisiae* by adding glucose to the medium (Figure 4A). To analyse hTK turnover directly, we measured its half-life by examining hTK protein levels after terminating expression from the GAL1 promoter by adding glucose to medium. The amount of hTK decreased with a half-life of < 20 min, whereas the S13A mutant form was significantly more stable, with a half-life of 40 min (Figure 4B), indicating that the half-life of TK is prolonged significantly by the mutation of Ser-13 → Ala. To avoid the complication of a difference in cell-cycle position of yeasts expressing wild-type or mutant hTK, we arrested cells in the S-phase by addition of 200 mM hydroxyurea, followed by release from the S-phase arrest and glucose addition. Under these experimental conditions, we still observed that the half-life of hTK was increased by mutation of Ser-13 → Ala (Figures 4C and 4D). Thus Ser-13 does play a role in hTK stability.

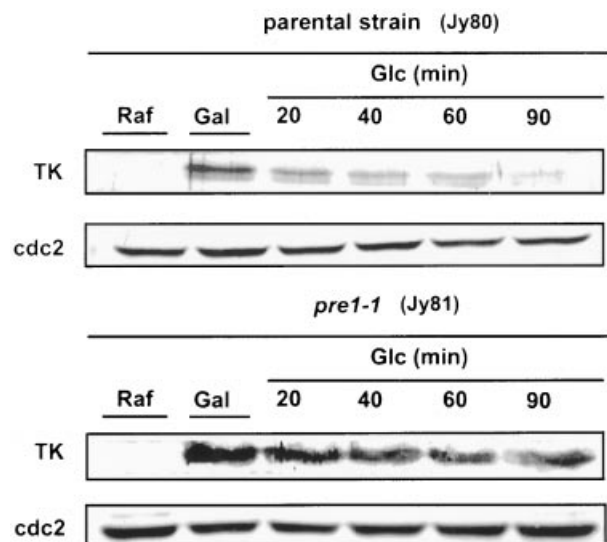


Figure 5 Proteasomal component is required for hTK degradation in *S. cerevisiae*

Degradation of hTK in parental (Jy80) and *pre-1* (Jy81) mutant strains was measured as described in the legend to Figure 4. Gal, galactose; Glc, glucose; Raf, raffinose.

Requirement of proteasomal function for degradation of hTK in yeast

To address the mechanism of hTK proteolysis in yeast, we examined the role of proteasome function in this process. In budding yeast, the *pre-1* gene product has been identified as a subunit of the 26 S proteasome [19,28,29,36], which is responsible for the ubiquitin-dependent degradation of a variety of cellular proteins in eukaryotic cells. We used temperature-sensitive mutation in *pre-1* to inactivate proteasome function conditionally [28,29,35,37]. As expected, hTK was degraded very slowly in *pre-1* mutant cells at 36 °C compared with its parental strain (Figure 5), suggesting that hTK degradation in yeast is dependent on the functional intactness of proteasomes.

SCF-mediated proteolytic pathway targets hTK degradation in *S. cerevisiae*

We next examined the stability of hTK expressed in a number of *S. cerevisiae* mutants carrying temperature-sensitive mutations in *cdc16-123*, *cdc34-2* and *cdc53-1* [21,22] to explore the contribution of APC or SCF in TK degradation. It appeared that the APC-mediated pathway was probably not responsible for hTK degradation, as the half-life of hTK expressed in *cdc16-123* mutant was similar to that in parental wild-type cells (Figure 6A). Since it has been reported that *pre-1* and *cdc16-123* mutants can both be arrested at the metaphase/anaphase transition with high levels of mitotic CDK activity [36,38,39], it is unlikely that the stabilization of hTK in proteasome-defective yeasts was a result of cell-cycle arrest. As for expression in *cdc34-2* and *cdc53-1* mutants, we found that hTK is no longer degraded at 36 °C (Figure 6A) and that the degradation rate of hTK expressed was similar in the three different parental strains JY92, JY236 and JY242. This result indicated that the SCF complex is probably required for hTK's proteolysis in *S. cerevisiae*. It is generally recognized that the SCF complex and APC/cyclosome play a

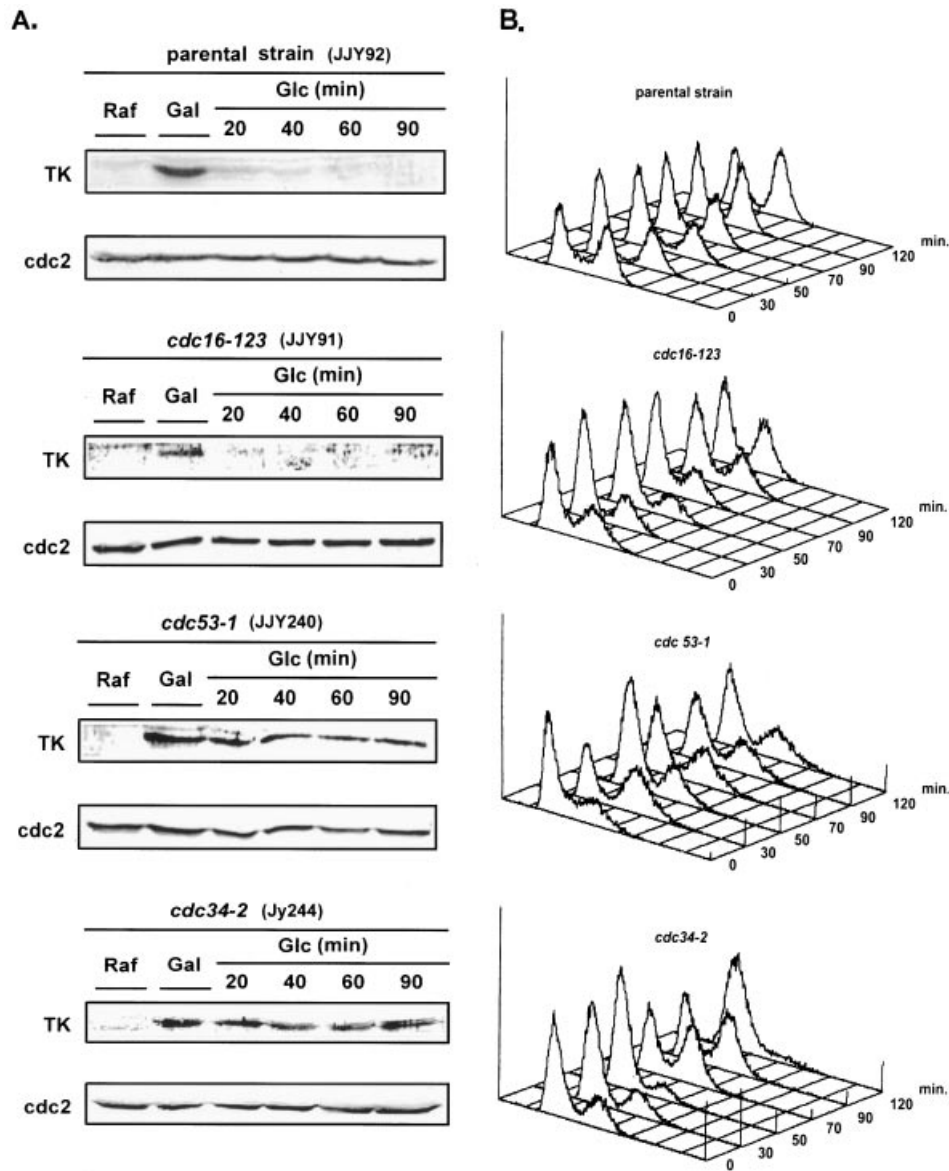


Figure 6 SCF components are required for hTK degradation in *S. cerevisiae*

(A) Expression and degradation of hTK in parental (JJY92), *cdc53-1* (JJY240), *cdc34-2* (Jy244) and *cdc16-123* mutant (JJY91) strains were performed as described in the legend to Figure 4. (B) In parallel, parental and temperature-sensitive mutant cells expressing hTK that used for the above degradation experiment were collected for FACS analysis to confirm cell-cycle progression at the indicated time point after cells shifting to 36 °C. Vertical axes, relative DNA content; left-hand horizontal axes, relative cell numbers. Gal, galactose; Glc, glucose; Raf, raffinose.

critical role in proteolysis of cell-cycle regulators [22–26], and several lines of evidence have revealed that the SCF-complex-component defective temperature-sensitive mutants fail to enter the S phase because they are unable to eliminate the S-phase cyclin/CDK inhibitor Sic1 [40–43]. It is reasonable that prolonged half-life of hTK in *cdc34-2* and *cdc53-1* temperature-sensitive mutants may be a consequence of cell-cycle arrest at a specific phase by shifting cells to 36 °C. To assess this possibility, we used the FACS analysis to examine whether each mutant strain is arrested at a particular cell-cycle phase under the experimental condition. It appeared that *cdc16-11*, *cdc34-2* and *cdc53-1* mutant strain cells were not synchronized at a specific phase within 90 min of non-permissive temperature shift (Figure 6B). Therefore, it seems that the lack of hTK degradation in

cdc34-2 and *cdc53-1* mutant strains is a result of functional impairment of the SCF complex, rather than the cell-cycle effect at non-permissive temperature.

The F-box protein *cdc4* does not contribute to hTK degradation in *S. cerevisiae*

We next examined hTK stability in the yeast F-box protein mutant strain *cdc4-1* [27–29]. hTK was degraded in the *cdc4-1* strain similarly to that seen in its parental strain (Figure 7A), suggesting that *cdc4-1* is not the F-box protein required for recognition of hTK for SCF. It should be pointed out that the *cdc4-1* mutation could also result in G₁ arrest due to the fact that *cdc4* is indispensable for recognition of phosphorylated Sic-1, a cdk

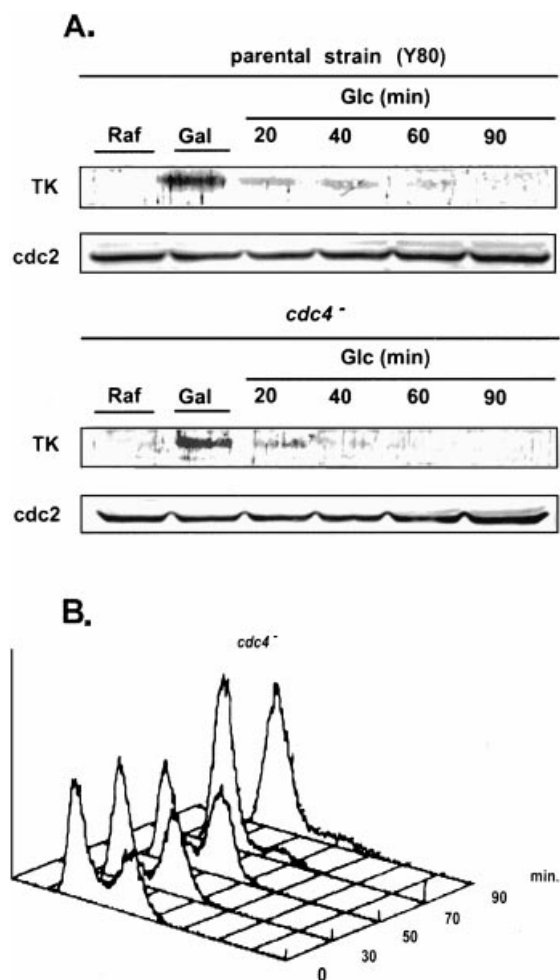


Figure 7 The degradation of hTK in *cdc4*-defective *S. cerevisiae*

(A) Expression and degradation of hTK in *cdc4*-defective and its parental strains (Y80) were performed as described in the legend to Figure 4. (B) *cdc4*-defective strain cells expressing hTK were collected for FACS analysis as described in the legend to Figure 6. Gal, galactose; Glc, glucose; Raf, raffinose.

inhibitor, for SCF-mediated degradation in yeast [41–43]. We also used FACS analysis to examine whether the *cdc4-1* mutant strain is arrested at the G₁ phase under our experimental conditions. Similarly, the *cdc4-1* mutant strain cells were not synchronized at the G₁ phase during the degradation assay (Figure 7B). The difference in hTK degradation between SCF core mutants (*cdc53-1* and *cdc34-1*) and the F-box protein mutant (*cdc4-1*) to some extent suggests that hTK degradation requires the functions of *cdc34-2* and *cdc53-1*, and that *cdc4* is not the F-box protein recognizing hTK for SCF-mediated ubiquitination.

DISCUSSION

According to the results obtained in this yeast study system, we hypothesize that mutation of Ser-13 to Ala may attenuate the degradation signal, resulting in accumulation of hTK in yeast when hTK expression is shut off by addition of glucose or thiamine in budding or fission yeast, respectively (Figures 2 and 3). Although yeast does not contain its endogenous TK, interestingly our results showed that the machinery in yeast is valid for

operating cell-cycle-dependent proteolysis of the ectopically expressed hTK. Most interestingly, we found that the SCF-mediated pathway is the operating system responsible for hTK degradation in *S. cerevisiae* (Figure 6). Whether this is true for mammalian cells requires further investigation. Nevertheless, it should be emphasized that Ser-13 is the site of mitotic phosphorylation of hTK in HeLa cells [16] and that phosphorylation is the critical signal for the substrate recognition by the SCF complex among all eukaryotes [18,19,22–26]. In this study, our results demonstrate that mutation on Ser-13 renders hTK more stable in both budding and fission yeasts, at least consistently indicating the critical role of Ser-13 in regulating the protein level of hTK expression. Although it has been shown that deletion of the C-terminal 40 amino acids stabilizes hTK at mitosis when stably expressed in murine Ltk⁻ fibroblasts [11–13], it is possible that this region contains the ubiquitination site for E2/E3, which in turn is necessary for its degradation. In our laboratory, we have found that TK can be polyubiquitinated in HeLa cells (results not shown). As hTK is phosphorylated and degraded in a cell-cycle-dependent manner, it is logical to assume that phosphorylation on Ser-13 contributes to the signal for hTK degradation through the ubiquitin/proteasome-dependent pathway.

However, whether hTK degradation requires signals in addition to phosphorylation on Ser-13 remains to be investigated. We did observe that the S13A TK mutant still underwent degradation in *S. cerevisiae*, but at a slower rate than the wild type. Therefore, it is likely that the other site can also contribute to the degradation signal. Nevertheless, our results provide the first evidence that hTK can utilize the cell-cycle-dependent machinery in yeast to carry out its proteolytic process, even though neither budding nor fission yeasts contain the TK gene in their genomes. Most importantly, these results suggest a good possibility that an as-yet-undetermined F-box protein is crucial for controlling TK turnover rate in eukaryotes.

We are grateful to Dr Yu-Li Jung (Tzu-Chi University, Hualien, Taiwan, Republic of China), Dr Stephen J. Elledge (Baylor College of Medicine, Houston, TX, U.S.A.) and Dr Jin-Yuan Su (National Yang-Ming University, Taipei, Taiwan, Republic of China) for kindly providing yeast strains and expression vectors for this study. This research is supported by grant NSC90-2320-B-002-065 from the National Science Council, Taiwan, Republic of China.

REFERENCES

- Bello, L. J. (1974) Regulation of thymidine kinase synthesis in human cells. *Exp. Cell Res.* **89**, 263–274
- Johnson, L. F., Rao, L. G. and Muench, A. J. (1982) Regulation of thymidine kinase enzyme level in serum-stimulated mouse 3T6 fibroblasts. *Exp. Cell Res.* **138**, 79–85
- Stuart, P., Ito, M., Stewart, C. and Conrad, S. E. (1985) Induction of cellular thymidine kinase occurs at the mRNA level. *Mol. Cell. Biol.* **5**, 1490–1497
- Coppock, D. L. and Pardee, A. B. (1987) Control of thymidine kinase mRNA during the cell cycle. *Mol. Cell. Biol.* **7**, 2925–2932
- Roehl, H. H. and Conrad, S. E. (1990) Identification of a G1-S-phase-regulated region in the human thymidine kinase gene promoter. *Mol. Cell. Biol.* **10**, 3834–3837
- Lipson, K. E., Chen, S.-T., Koniecki, J., Ku, D.-H. and Baserga, R. (1989) S-phase-specific regulation by deletion mutants of the human thymidine kinase promoter. *Proc. Natl. Acad. Sci. U.S.A.* **86**, 6848–6852
- Kim, Y. K. and Lee, A. S. (1991) Identification of a 70-base-pair cell cycle regulatory unit within the promoter of the human thymidine kinase gene and its interaction with cellular factors. *Mol. Cell. Biol.* **11**, 2296–2302
- Sherley, J. L. and Kelly, T. J. (1988) Regulation of human thymidine kinase during the cell cycle. *J. Biol. Chem.* **263**, 8350–8358
- Ito, M. and Conrad, S. E. (1990) Independent regulation of thymidine kinase mRNA and enzyme levels in serum-stimulated cells. *J. Biol. Chem.* **265**, 6954–6960
- Knofler, M., Waltner, C., Wintersberger, E. and Mullner, E. W. (1993) Translational repression of endogenous thymidine kinase mRNA in differentiating and arresting mouse cells. *J. Biol. Chem.* **268**, 11409–11416

- 11 Kauffman, M. G. and Kelly, T. J. (1991) Cell cycle regulation of thymidine kinase: residues near the carboxyl terminus are essential for the specific degradation of the enzyme at mitosis. *Mol. Cell. Biol.* **11**, 2538–2546
- 12 Kauffman, M. G., Rose, P. A. and Kelly, T. J. (1991) Mutation in the thymidine kinase gene that allows expression of the enzyme in quiescent (G0) cells. *Oncogene* **6**, 1427–1435
- 13 Sutterluety, H., Bartl, S., Karlseder, J., Wintersberger, E. and Seiser, C. (1996) Carboxyl-terminal residues of mouse thymidine kinase are essential for rapid degradation in quiescent cells. *J. Mol. Biol.* **259**, 383–392
- 14 Chang, Z. F. and Huang, D. Y. (1993) The regulation of thymidine kinase in HL-60 human promyeloleukemia cells. *J. Biol. Chem.* **268**, 1266–1271
- 15 Chang, Z. F., Huang, D. Y. and Hsue, N. C. (1994) Differential phosphorylation of human thymidine kinase in proliferating and M phase-arrested human cells. *J. Biol. Chem.* **269**, 21249–21254
- 16 Chang, Z. F., Huang, D. Y. and Chi, L. M. (1998) Serine 13 is the site of mitotic phosphorylation of human thymidine kinase. *J. Biol. Chem.* **273**, 12095–12100
- 17 Mikulits, W., Hengstschlager, M., Sauer, T., Wintersberger, E. and Mullner, E. W. (1996) Overexpression of thymidine kinase mRNA eliminates cell cycle regulation of thymidine kinase enzyme activity. *J. Biol. Chem.* **271**, 853–860
- 18 Jackson, P. K., Eldridge, A. G., Freed, E., Furstenthal, L., Hsu, J. Y., Kaiser, B. K. and Reimann, J. D. (2000) The lore of the RINGs: substrate recognition and catalysis by ubiquitin ligase. *Trends Cell Biol.* **10**, 429–439
- 19 Ciechanover, A. (1998) The ubiquitin-proteasome pathway: on protein death and cell life. *EMBO J.* **17**, 7151–7160
- 20 Scheffner, M., Nuber, U. and Huibregtse, J. M. (1995) Protein ubiquitination involving an E1-E2-E3 enzyme ubiquitin thioester cascade. *Nature (London)* **373**, 81–83
- 21 Herskho, A. and Ciechanover, A. (1998) The ubiquitin system. *Annu. Rev. Biochem.* **67**, 425–479
- 22 Deshaies, R. J. (1999) SCF and Cullin/RING H2-based ubiquitin ligase. *Annu. Rev. Cell Dev. Biol.* **15**, 435–467
- 23 Desalle, L. M. and Pagano, M. (2001) Regulation of G1 to S transition by the ubiquitin pathway. *FEBS Lett.* **490**, 179–189
- 24 Zachariae, W. and Nasmyth, K. (1999) Whose end is destruction: cell division and the anaphase-promoting complex. *Genes Dev.* **13**, 2039–2058
- 25 Krek, W. (1998) Proteolysis and the G1-S transition: the SCF connection. *Curr. Opin. Genet. Dev.* **8**, 36–54
- 26 Tyers, M. and Willems, A. R. (1999) One ring to rule a superfamily of E3 ubiquitin ligase. *Science* **284**, 601–604
- 27 Drury, L. S., Perkins, G. and Diffley, J. F. (1997) The Cdc4/34/53 pathway targets Cdc6p for proteolysis in budding yeast. *EMBO J.* **16**, 5966–5977
- 28 Strohmaier, H., Spruck, C. H., Won, K. A., Sangfelt, O. and Reed, S. I. (2001) Human F-box protein hCdc4 targets cyclin E for proteolysis and is mutated in a breast cancer cell line. *Nature (London)* **413**, 316–322
- 29 Koepp, D. M., Schaefer, L. K., Ye, X., Keyomarsi, K., Chu, C., Harper, J. W. and Elledge, S. J. (2001) Phosphorylation-dependent ubiquitination of cyclin E by the SCFFbw7 ubiquitin ligase. *Science* **294**, 173–177
- 30 Winston, J. T., Koepp, D. M., Zhu, C., Elledge, S. J. and Harper, J. W. (1999) The SCFbeta-TRCP-ubiquitin ligase complex associates specifically with phosphorylated destruction motifs in Ikkappa B alpha and beta-catenin and stimulates Ikkappa B alpha ubiquitination *in vitro*. *Genes Dev.* **13**, 270–283
- 31 Kipreos, E. and Pagano, M. (2000) The F-box protein family. *Genome Biol.* **1**, Reviews 3002.1–3002.7
- 32 Winston, J. T., Koepp, D. M., Zhu, C., Elledge, S. J. and Harper, J. W. (1999) A family of mammalian F-box proteins. *Curr. Biol.* **9**, 1180–1182
- 33 Su, J. Y. and Maller, J. L. (1994) Identification of a *Xenopus* cDNA that prevents mitotic catastrophe in the fission yeast *Schizosaccharomyces pombe*. *Gene* **145**, 155–156
- 34 Su, J. Y. and Maller, J. L. (1995) Cloning and expression of a *Xenopus* gene that prevents mitotic catastrophe in fission yeast. *Mol. Gen. Genet.* **246**, 387–396
- 35 Frolova, E., Johnson, M. and Majors, J. (1999) Binding of the glucose-dependent Mig1p repressor to the GAL1 and GAL 4 promoters *in vivo*: regulation by glucose and chromatin structure. *Nucleic Acids Res.* **27**, 1350–1358
- 36 Heinemeyer, W., Kleinschmidt, J. A., Saidowsky, J., Escher, C. and Wolf, D. H. (1991) Proteinase yscE, the yeast proteasome/multicatalytic-multifunctional proteinase: mutants unravel its function in stress induced proteolysis and uncover its necessity for cell survival. *EMBO J.* **10**, 555–562
- 37 Johnson, M., Flick, J. S. and Pexton, T. (1994) Multiple mechanism provide rapid and stringent glucose repression of GAL gene expression in *Saccharomyces cerevisiae*. *Mol. Cell. Biol.* **14**, 3834–3841
- 38 Page, A. M. and Hieter, P. (1999) Proteinase yscE, the yeast proteasome/multicatalytic-multifunctional proteinase: mutants unravel its function in stress induced proteolysis and uncover its necessity for cell survival. *Annu. Rev. Biochem.* **68**, 583–609
- 39 Peters, J. M. (2002) The anaphase-promoting complex: proteolysis in mitosis and beyond. *Mol. Cell* **9**, 931–943
- 40 Feldman, R. M., Correll, C. C., Kaplan, K. B. and Deshaies, R. J. (1997) F-box proteins are receptors that recruit phosphorylated substrates to the SCF ubiquitin-ligase complex. *Cell* **91**, 209–219
- 41 Nash, P., Tang, X., Orlicky, S., Chen, Q., Gertler, F. B., Mendenhall, M. D., Sicheri, F., Pawson, T. and Tyers, M. (2001) Multiple phosphorylation of a CDK inhibitor sets a threshold for the onset of DNA replication. *Nature (London)* **414**, 514–521
- 42 Schwob, E., Bohm, T., Mendenhall, M. and Nasmyth, K. (1994) The B-type cyclin kinase inhibitor p40SIC1 controls the G1 to transition in *S. cerevisiae*. *Cell* **79**, 233–244
- 43 Deshaies, R. J. and Ferrell, Jr, J. E. (2001) Multisite phosphorylation and the countdown to S phase. *Cell* **107**, 819–822

Received 23 August 2002/11 November 2002; accepted 15 November 2002

Published as BJ Immediate Publication 15 November 2002, DOI 10.1042/BJ20021335