

A Novel Syndrome Affecting Multiple Mitochondrial Functions, Located by Microcell-Mediated Transfer to Chromosome 2p14-2p13

Agnieszka Seyda,^{1,3} Robert F. Newbold,⁵ Thomas J. Hudson,⁶ Andrei Verner,⁶ Neviana MacKay,¹ Susan Winter,⁷ Annette Feigenbaum,² Suzann Malaney,⁸ Diego Gonzalez-Halphen,⁹ Andrew P. Cuthbert,¹⁰ and Brian H. Robinson^{1,3,4}

¹Metabolism Research Programme, Research Institute and ²Division of Clinical Genetics, Hospital for Sick Children, and ³Departments of Biochemistry and ⁴Paediatrics, University of Toronto, Toronto; ⁵Department of Biology and Biochemistry, Brunel University, Uxbridge, UK, ⁶Montréal General Hospital, Montréal; ⁷Medical Genetics/Metabolism, Valley Children's Hospital, Fresno, CA; ⁸Garvin Institute of Medical Research, Darlinghurst, Australia; ⁹Departamento de Bioenergetica, Universidad Nacional Autonoma de Mexico, Mexico City; and ¹⁰Division of Medical and Molecular Genetics, Guy's, King's and St. Thomas' School of Medicine, Guy's Hospital, London

We have studied cultured skin fibroblasts from three siblings and one unrelated individual, all of whom had fatal mitochondrial disease manifesting soon after birth. After incubation with 1 mM glucose, these four cell strains exhibited lactate/pyruvate ratios that were six times greater than those of controls. On further analysis, enzymatic activities of the pyruvate dehydrogenase complex, the 2-oxoglutarate dehydrogenase complex, NADH cytochrome c reductase, succinate dehydrogenase, and succinate cytochrome c reductase were severely deficient. In two of the siblings the enzymatic activity of cytochrome oxidase was mildly decreased (by ~50%). Metabolite analysis performed on urine samples taken from these patients revealed high levels of glycine, leucine, valine, and isoleucine, indicating abnormalities of both the glycine-cleavage system and branched-chain α -ketoacid dehydrogenase. In contrast, the activities of fibroblast pyruvate carboxylase, mitochondrial aconitase, and citrate synthase were normal. Immunoblot analysis of selected complex III subunits (core 1, cyt c₁, and iron-sulfur protein) and of the pyruvate dehydrogenase complex subunits revealed no visible changes in the levels of all examined proteins, decreasing the possibility that an import and/or assembly factor is involved. To elucidate the underlying molecular defect, analysis of microcell-mediated chromosome-fusion was performed between the present study's fibroblasts (recipients) and a panel of A9 mouse:human hybrids (donors) developed by Cuthbert et al. (1995). Complementation was observed between the recipient cells from both families and the mouse:human hybrid clone carrying human chromosome 2. These results indicate that the underlying defect in our patients is under the control of a nuclear gene, the locus of which is on chromosome 2. A 5-cM interval has been identified as potentially containing the critical region for the unknown gene. This interval maps to region 2p14-2p13.

Introduction

Inherited mitochondrial defects in which more than one enzyme is affected with low activity are relatively common in association with mtDNA that is mutated, deleted, or depleted (Zeviani et al. 1989; Brown and Wallace 1994; Bodnar et al. 1995; Grossman and Shoubridge 1996; Moraes et al. 1999). However, defects involving multiple enzymopathies, which are associated with defects in nuclear genes, are rare examples, being abnormalities in either import proteins (Jin et al. 1996, 1999; Koehler et al. 1999) or the Lon proteases respon-

sible for mitochondrial-protein turnover (van Dijl et al. 1998).

Fatal neonatal infantile forms of the defects associated with primary lactic acidosis have been reported, including defects of the pyruvate dehydrogenase (PDH) complex (PDHC) (Robinson et al. 1987a; Brown et al. 1988; Robinson 1995; Morten et al. 1998), the NADH-coenzyme Q reductase complex (Moreadith et al. 1984; Hoppel et al. 1987), the cytochrome oxidase complex (DiMauro et al. 1988; Lombes et al. 1989, 1996), and the ubiquinol cytochrome c reductase complex (Kennaway 1988; Valnot et al. 1999). Here we report two cases in which cultured skin fibroblasts showed decreased activities of the pyruvate dehydrogenase complex, the 2-oxoglutarate dehydrogenase complex, and succinate cytochrome c reductase. Furthermore, analysis of urine metabolites indicated possible deficiencies of branched-chain α -ketoacid dehydrogenase and of the glycine-cleavage system. Here we show

Received October 18, 2000; accepted for publication November 28, 2000; electronically published January 10, 2001.

Address for correspondence and reprints: Dr. Brian H. Robinson, Hospital for Sick Children, 555 University Avenue, Toronto, Ontario M5G 1X8. E-mail: bhr@sickkids.on.ca

© 2001 by The American Society of Human Genetics. All rights reserved. 0002-9297/2001/6802-0010\$02.00

that this new syndrome is caused by a defect in a gene located on chromosome 2p14-2p13 (84–89 cM).

Subjects, Material, and Methods

Three Siblings

Three siblings—two males and one female (cell strain numbers 4142, 4143, and 4144)—born a few years apart to nonconsanguineous parents after uncomplicated pregnancies, presented with feeding difficulty, weakness, lethargy, and decreasing responsiveness within a few days after birth. Laboratory investigation showed metabolic acidosis with elevated blood lactate levels. Assisted ventilation was necessary because of respiratory failure. Urine organic-acid analysis performed on one of the siblings (4143) showed a highly elevated urinary lactate level, with a secondary elevation of 2-hydroxybutyrate (5.5 mEq creatinine/ml, by GC). Measurement of amino acid levels in the blood showed glycine, leucine, isoleucine, phenylalanine, alanine, valine, and taurine levels to be elevated, the most significant elevation being observed in glycine (5.4 times the normal level). All three siblings died <1 mo after birth. A limited autopsy was done on another sibling (4142), and significant findings included pulmonary oxygen toxicity, pneumonitis, eosinophilic infarction of the right and left anterior papillary muscles, focal tracheal mucosal denudation, focal intra-alveolar hemorrhage, focal renal hemorrhage, and white-matter spongiosis, all consistent with a metabolic abnormality.

Unrelated Patient

A male infant was born by spontaneous vaginal delivery at 33 wk gestation, as a product of in vitro fertilization, to a 30-year-old G4, P0, ectopic 3 mother (that is, of four pregnancies, none were live births, three were ectopic and therefore failed). The parents were first cousins. During pregnancy, the mother had gestational diabetes and pregnancy-induced hypertension with proteinuria. Four months after birth, the infant developed epileptic seizures as well as elevated levels of serum glycine (571 μM) and CSF glycine (28 μM). At 6 mo of age he was developmentally delayed, and the frequency of seizures increased. Subsequently, he developed dilated cardiomyopathy and epileptic encephalopathy. He suffered from recurrent vomiting, progressive lethargy, tachypnea, diaphoresis, respiratory distress, and hepatomegaly. At 7 mo of age he became acidotic. His initial lactate level was 11.5 mM, but it increased to 19 mM in the course of few weeks. His CSF glycine levels rose to 1,039 μM , and his condition progressively deteriorated. He died at 11 mo of age.

Cell Lines

The cell lines used in this study were obtained by skin biopsy of the forearm of patients, after informed consent was obtained. Primary fibroblast lines were established from the four patients (4142, 4143, 4144, and 11571) with compound mitochondrial-enzyme deficiency, all of whom exhibited the same biochemical phenotype. Fibroblasts were grown in Eagle's minimal essential medium (α -MEM) and 10% fetal calf serum, supplemented with glucose to a concentration of 10.5 mM. Measurements of the lactate-to-pyruvate (L/P) ratio in confluent fibroblast cultures were performed as described elsewhere (Robinson et al. 1985). The primary fibroblast cell lines were transduced with a retroviral vector expressing the E6E7 region of type 16 human papilloma virus, to extend their life span (Compton 1993), and were grown in high-glucose Dulbecco's minimal essential medium (DMEM) supplemented with 20% fetal bovine serum.

Microcell-Mediated Chromosome Transfer

A panel of human:mouse monochromosomal hybrids (Cuthbert et al. 1995) was used as the source of normal human donor chromosomes. All 22 autosomes and the X chromosome were serially transferred into one of the patient cell lines by microcell-mediated chromosome transfer (Fournier 1981). In brief, donor cells were plated in α -MEM containing 10% fetal bovine serum and hygromycin B (400 U/ml; ICN), 3 d before fusion. The medium was then changed to DMEM plus 20% fetal bovine serum, and the cells were exposed to colchicine (0.06 $\mu\text{g/ml}$) for 48 h to induce micronucleation. The cells were then collected by trypsinization and were plated on plastic "bullets" (custom made from tissue-culture plates, to fit into 50-ml centrifuge tubes) coated with cross-linked concanavalin A (Sigma). Microcells were prepared by centrifugation at 34°C–37°C and 15,000 g (SS34 rotor) in media containing cytochalasin B (10 $\mu\text{g/ml}$; Sigma), were filtered through 8- μm and 5- μm filters, were pelleted at 3,000 g on a benchtop centrifuge, and were resuspended in serum-free medium. The microcell suspension and phytohemagglutinin were added to the plate containing the recipient cells (100 $\mu\text{g/ml}$) and incubated for 20–30 min. Microcells were fused with 45% polyethylene glycol plus 10% dimethyl sulfoxide for 60 s, washed with serum-free medium, and incubated in α -MEM plus 20% fetal bovine serum. After 48–72 h, fused cells were selected in hygromycin B (100 U/ml). Colonies were picked, expanded, and analyzed 3–4 wk later.

Enzymology and Spectrophotometric and Immunological Analysis

Activity of the PDH complex in both the native (unstimulated) and the dichloroacetate-activated state was determined in fibroblast extracts by the method of Sheu et al. (1981). Activity of the 2-oxoglutarate complex was determined in fibroblast extracts by the method of Hyland and Leonard (1983). Activity of the NADH cytochrome c reductase was assayed in 0.1 M potassium phosphate (KPi) buffer (pH 7.0) containing 94 μ M cytochrome c and 1mM azide. To start the reaction, 20 μ M NADH was added, and reduction of cytochrome c was monitored at 550 nm. Cytochrome oxidase activity was assayed in 0.1 M KPi buffer (pH 7.0). Cytochrome c was reduced with 3.2 mM ascorbate, followed by dialysis against 0.1 M KPi for 2 d, during which the buffer was changed twice. Reduced cytochrome c (94 μ M) was added to start the reaction, and oxidation of cytochrome c was monitored at 550 nm. Citrate synthase assay was performed as described by Robinson et al. (1987b). Succinate dehydrogenase activity was determined in mitochondria purified from skin fibroblasts by the method of Hatefi and Stiggall (1978). Succinate cytochrome c reductase activity was determined in fibroblast extracts by the method of Yu and Yu (1982). Aconitase activity was determined in mitochondria purified from skin fibroblasts by the method of Racker (1950). Activity of the bc₁ complex was determined according to the method described by Darley-Usmar et al. (1987). Western blotting was performed on mitochondrial extracts prepared by the method of Pitkänen et al. (1996), using polyclonal antibodies against (a) porcine-heart PDH-complex raised in rabbit (Ekong 1982) and (b) holo bc₁ and iron-sulfur protein (ISP)-bc₁ bovine heart-and-liver complex raised in rabbit (Vazquez-Acevedo et al. 1993).

Preparation of Human Liver Mitochondria

Mitochondria were isolated from frozen post-mortem human livers by a method that is a combination of those described by Pitkänen et al. (1996) and Craig and Hood (1997). Tissues were finely minced and then were gently homogenized in buffer (50 mM HEPES, pH 7.4, 70 mM sucrose, 220 mM mannitol, 1 mM EGTA and 2 mg fatty acid-free BSA/ml) (Sigma-Aldrich). After homogenization, the mixture was centrifuged at 3,000 g for 10 min. The supernatant was then centrifuged at 15,000 g for 10 min. The pellet was gently solubilized in homogenization buffer, and the centrifugation steps were repeated. The pellet was resolubilized and recentrifuged at 15,000 g for a final time. Then the mitochondrial pellet was resuspended in buffer (0.34 M sucrose, 100 mM KCl, 10 mM Tris-Cl, and 1 mM EDTA) at a concentration of 1 mg/ml.

Free Radical-Production Assay

Superoxide production was determined using the chemiluminescent dye lucigenin (10,10-dimethyl-9,9-biacridinium dinitrate; Sigma) (Pitkänen and Robinson 1996). The concentration of the working solution of lucigenin was 4.3 μ M. The measurements were performed in buffer containing 70 mM sucrose, 220 mM mannitol, 2.5 mM KPi (pH 7.5), 2.5 mM MgCl₂, 0.5 mM EDTA, and 0.1% BSA. Lucigenin was added to the buffer immediately before measurements were taken. All measurements were made at room temperature, with a Lumat luminometer (model 9507; Berthold). The signal from the dye was integrated over a period of 30 s after the addition of substrate (2 mM succinate), and the background signal during this same period was subtracted from the sample signal. Mitochondria were preincubated, with or without inhibitors, in the measurement buffer for 1 min prior to addition of substrate. The substrate was added using the automatic-injection system of the Lumat 9507, after determination of the background signal during a 15-s period. Measurements were carried out in the presence or absence of either antimycin A (final concentration 20 μ g/ml), myxothiazol (final concentration 10 μ M) (Sigma-Aldrich), or stigmatellin (final concentration 20 μ M) (Fluka Biochemicals). These inhibitor concentrations were shown to fully inhibit enzyme activity (Raha et al. 2000). Ten micrograms of mitochondrial proteins per sample was used for luminometric monitoring.

Deletion and Exclusion Mapping

Oligonucleotide primers for polymorphic microsatellite markers on chromosome 2 were obtained (Research Genetics, Huntsville, Alabama and ACGT, Toronto). Deletion mapping was done on DNA isolated from hygromycin B-resistant clones obtained, after microcell fusion, from the A9-2 monochromosomal hybrid line, by a Pure Gene kit (Gentra Systems, Minneapolis). Exclusion mapping was carried out on the three affected siblings as well as on the family of the unrelated individual. This family included the affected individual, his brother, and both parents. Genomic DNA for this experiment was isolated from primary skin fibroblasts, with a total-DNA-isolation kit (Qiagen). PCR was performed using the Research Genetics protocol, AmpliTaq Gold (PE Biosystems), and γ ³⁵S-dATP. PCR products were run on 6% sequencing gels exposed overnight, with BioMax film (Kodak), and developed. PCR was also performed, as above, in the absence of γ ³⁵S-dATP. Products were run on Supergel 250™ (Helixx); gels were stained with Sybr Green (Helixx, Toronto) for 20 min, and DNA bands were visualized by UV illumination.

Results

Skin fibroblast cultures established from three siblings and one unrelated patient showed a four- to sevenfold elevation in the L/P ratio formed on incubation with 1 mM glucose for 1 h (Robinson et al. 1987a) (table 1). A very low activity of the pyruvate dehydrogenase complex was also recorded, with values in the dichloroacetate-activated state reaching, at most, 25% of the control value. Furthermore, breakdown of the activities of individual PDH-complex components revealed a decreased activity of the first subcomplex, pyruvate dehydrogenase (designated "E₁"), whereas the activities of the remaining components, dihydrolipoamide transacetylase (designated "E₂") and dihydrolipoamide dehydrogenase (designated "E₃"), were normal. Activities of the NADH cytochrome c reductase (complexes I + III), succinate cytochrome c reductase (complexes II + III), succinate dehydrogenase (complex II) bc₁ complex (complex III), and the 2-oxoglutarate dehydrogenase complex were also decreased, reaching, at most, 30%, 35%, 45%, 60%, and 28%, respectively, of control values. The activity of cytochrome c oxidase (COX) was decreased to ~50% of control values in two of the siblings (4143 and 4144). In contrast, activity values for pyruvate carboxylase, mitochondrial aconitase, and citrate synthase were normal. The above-described phenotype was observed in both primary and transformed cells (data not shown). Transformation did not alter enzymatic activities of the assayed complexes. Urine organic-

acid analysis performed on one of the siblings (4143) showed a highly elevated urinary lactate level with a secondary elevation of 2-hydroxybutyrate (5.548 mEq/ml creatinine by GC). In all four patients, amino acid levels in the blood showed glycine, leucine, isoleucine, phenylalanine, alanine, valine, and taurine at above-normal levels, with the most significant abnormality being a fivefold elevation in glycine.

To determine the chromosomal location of the gene defect in these patients, we rescued this phenotype by functional complementation with a normal human chromosome transferred into deficient cells by microcell-mediated chromosome transfer. A panel of stable human:mouse hybrid cell lines containing human chromosomes tagged with a selectable marker (HyTK) was used as a source of donor human chromosomes (Cuthbert et al. 1995). Autosomes (with the exception of chromosomes 1, 9, 13, 15, 17, and 21) and the X chromosome were transferred, one at a time, into a patient fibroblast line (4143, one of the three siblings), and the cells were selected in hygromycin B. Three to four weeks postfusion, surviving colonies were picked, and PDH-complex activity was measured in pooled colonies obtained for each individual chromosome transfer. Transfer of chromosome 2 (A9.2 human:mouse hybrid cell line) restored PDH complex activity to control levels (table 2). This restoration was not observed with either any other autosome or the X chromosome (table 2). Transfer of chromosome 2 also restored the activity of

Table 1

Various Mitochondrial Enzyme Activities of Patients Suffering from the Multiple Disorder

ENZYME ^a	MEAN ± SEM ACTIVITY ^b [NO. OF DETERMINATIONS] IN (nmol/min/mg)				
	Control	Sibling 1 (4142)	Sibling 2 (4143)	Sibling 3 (4144)	Unrelated Patient (11571)
PDHC (active)	.98 ± .14 [9]	.16 ± .04 [6]	.22 ± .05 [10]	.05 ± .02 [9]	.21 ± .04 [4]
PDHC (DCA activated)	1.16 ± .16 [9]	.13 ± .03 [6]	.25 ± .06 [10]	.04 ± .02 [8]	.36 ± .06 [4]
PDH E ₁	1.41 ± .21 [5]	.48 [1]	.63 [1]	.36 ± .07 [5]	N/A
PDH E ₂	10.68 ± 3.89 [2]	12.04 [1]	12.19 [1]	8.86 ± 1.92 [2]	N/A
PDH E ₃	7.20 ± .53 [2]	9.26 [1]	7.34 [1]	7.21 ± .60 [2]	N/A
OGDHC	1.48 ± .33 [4]	0.20 ± .06 [2]	.37 ± .05 [2]	.12 ± .05 [2]	0.42 ± .06 [2]
NCR (I + III)	6.38 ± .22 [5]	1.95 ± .38 [4]	1.02 ± .25 [4]	1.27 ± .47 [3]	1.98 ± .53 [3]
COX	5.18 ± .69 [4]	5.07 ± .28 [3]	2.23 ± .46 [4]	2.70 ± .56 [3]	4.95 ± .50 [4]
L/P ratio	27.1 ± 3.5 [6]	105.5 ± 28.4 [4]	157.0 ± 20.7 [8]	187.7 ± 15.1 [4]	101.2 ± 6.5 [4]
Pyruvate carboxylase	1.38 ± .29 [3]	2.33 [1]	.42 [1]	1.46 [1]	1.17 [1]
Citrate synthase	39.67 ± 8.34 [2]	N/A	35.34 ± 7.30 [2]	32.02 ± 5.76 [2]	42.86 ± 6.30 [2]
SDH	16.0 ± 2.4 [4]	N/A	7.0 ± .2 [2]	N/A	6.9 ± .2 [2]
Mitochondrial aconitase	4.0 ± .6 [2]	N/A	3.5 ± .6 [2]	N/A	3.2 ± .5 [2]
bc ₁ complex (complex III) ^c	6.9 ± 1.5 [4]	4.5 ± .8 [2]	3.8 ± .7 [2]	N/A	3.9 ± .9 [3]
SCR	5.94 ± 1.01 [2]	N/A	1.41 ± .33 [2]	1.57 ± .36 [2]	2.17 ± .71 [2]

^a NCR (complexes I+III) = NADH cytochrome c reductase (complexes I + III); SDH = succinate dehydrogenase (complex II); SCR = succinate cytochrome c reductase (complexes II + III).

^b Determined in cultured skin fibroblasts from each patient and a group of controls. Individual determinations were made on separate cultures on different days, and multiple control cell lines were used.

^c Data standardized to levels of citrate synthase.

Table 2

Functional Complementation Analysis, with a Panel of Human Chromosomes, of Skin Fibroblasts from a Patient Suffering from Multiple Mitochondrial Enzyme Disorder

CHROMOSOME OR SOURCE	MEAN \pm SEM ACTIVITY ^a [NO. OF DETERMINATIONS] OF (nmol/min/mg cell protein)		
	NADH Cytochrome c Reductase (Complexes I & III)	PDH Complex	
		Native	DCA Activated
1	NA	NA	NA
2	5.98 \pm .34 [4]	1.12 \pm .09 [9]	1.5 \pm .145 [9]
321 \pm .04 [2]	.24 \pm .06 [2]
4	1.99 \pm .71 [2]	.23 \pm .07 [3]	.23 \pm .04 [3]
5	1.87 \pm .45 [2]	.25 \pm .06 [2]	.19 \pm .04 [2]
619 \pm .02 [2]	.29 \pm .05 [2]
722 \pm .05 [3]	.20 \pm .03 [3]
8	2.08 \pm .43 [2]	.30 \pm .06 [2]	.31 \pm .04 [2]
9	NA	NA	NA
1014 \pm .07 [2]	.17 \pm .05 [2]
11028 \pm .06 [2]	.25 \pm .04 [2]
1218 \pm .03 [2]	.23 \pm .05 [2]
13	NA	NA	NA
14	2.24 \pm .39 [2]	.26 \pm .06 [3]	.21 \pm .03 [3]
15	NA	NA	NA
16	1.99 \pm .22 [2]	.29 \pm .08 [3]	.28 \pm .07 [3]
17	NA	NA	NA
1828 \pm .04 [2]	.20 \pm .04 [2]
19	2.13 \pm .45 [2]	.23 \pm .06 [2]	.25 \pm .05 [2]
2026 \pm .05 [2]	.30 \pm .04 [2]
21	NA	NA	NA
22	2.56 \pm .63 [2]	.22 \pm .05 [2]	.27 \pm .04 [2]
X34 \pm .07 [2]	.29 \pm .03 [2]
Patient 4143	1.02 \pm .25 [4]	.22 \pm .05 [10]	.24 \pm .05 [10]
Control	6.56 \pm .58 [5]	.98 \pm .08 [9]	1.21 \pm .14 [9]

^a Measured after microcell-mediated transfer of single HyTK-tagged normal human chromosomes into fibroblasts from patient 4143 (one of the three siblings). For multiple pooled clones recovered after selection in hygromycin B. NA = transfer of chromosome not performed. An ellipsis (...) denotes that activity was not measured.

the 2-oxoglutarate dehydrogenase complex and the NADH cytochrome c reductase in that cell line (4143).

To confirm a common genotype in the selected patients, we transferred chromosome 2 into skin fibroblasts obtained from another affected sibling (4142) and from the unrelated patient (11571). Additional clones were isolated from the latter patient. As had been seen in the previous results, this chromosome restored activities of all assayed enzyme complexes (table 3).

We also tested PDH-complex activities in individual clones obtained from patients 4143 and 11571. Enzyme activity was restored in 23/25 independent clones derived from patient 4143 and in 30/36 clones in cells derived from patient 11571 (data not shown).

To narrow the potential locus region on chromosome 2, we genotyped three affected siblings, as well as the

unrelated patient, his parents, and his unaffected brother with a set of chromosome-2 microsatellite markers. At the locus of the gene defect, affected family members, in theory, should share common alleles while being discordant with unaffected family members. This analysis resulted in isolation of two regions of interest: one on the p arm and the other on the q arm of chromosome 2 (table 4). The region on the p arm extended between markers D2S1337 and D2S1790 (~24 cM), and the region on the q arm extended between markers D2S434 and D2S407 (~18 cM). During the course of this experiment we had to exclude the family of the unrelated patient because the extremely high degree of consanguinity (the parents were first cousins) rendered the data non-informative.

Chromosomes incorporated into the genome of recipient cells by microcell transfer often undergo deletions and rearrangements (Leach et al. 1989; Newbold and Cuthbert 1996). To eliminate one of the two candidate regions obtained by exclusion mapping, as well as to obtain a narrower chromosomal interval containing the gene of interest, we used polymorphic microsatellite markers from chromosome 2. We mapped the regions that were incorporated into the genomes of complemented and noncomplemented clones isolated from patients 4143 and 11571 after hygromycin B selection. In functionally complemented clones, markers that are missing from the exogenous chromosome could be excluded from the region of interest; similarly, in noncomplemented clones, informative markers that are present could be excluded as well. Analysis of 13 complemented clones and 1 noncomplemented clone from patient 4143, and of 10 complemented and 6 noncomplemented clones from patient 11571, allowed the mapping of the gene defect to the region between markers A053XF9 and GATA-P132045 (~5 cM) (table 5). This analysis excluded the region, on the q arm of chromosome 2, obtained by marker analysis in the three siblings. Cumulative data for both exclusion and deletion mapping are shown in figure 1. During the exclusion-mapping experiment it became apparent that neither the immortalization of the primary cells nor the chromosome-transfer procedure resulted in the loss of cellular heterozygosity, owing to the fact that, with informative sequence-tagged site (STS) markers, endogenous and exogenous alleles could be easily identified.

To determine whether the genetic defect shared by the affected individuals had any impact on the amount of protein expressed for the deficient complexes, immunoblotting was performed using antibodies directed against the total PDH complex, the holo bc₁ complex, and the bc₁ complex ISP. These immunoblots show that four components of the PDH complex and three components of the bc₁ complex are expressed at levels comparable to those in control samples (fig. 2). This indi-

Table 3**Functional Complementation Analysis of Selected Enzyme Complexes (the bc₁, the PDHC, and the 2-OGDHC), Pre- and Post-Chromosome 2 Transfer**

CELL LINE	MEAN ± SEM ACTIVITY [NO. OF DETERMINATIONS] OF (nmol/min/mg cell protein)			
	NADH Cytochrome c Reductase	PDH Complex		2-OGDHC
		Native	DCA Activated	
4143	1.02 ± .25 [4]	.22 ± .05 [10]	.24 ± .05 [10]	.37 ± .05 [2]
4143 x chr 2	5.98 ± .33 [4]	1.12 ± .09 [9]	1.50 ± .14 [9]	1.04 ± .10 [2]
4142	1.95 ± .38 [4]	.16 ± .04 [3]	.24 ± .04 [3]	.11 ± .09 [2]
4142 x chr 2	6.62 ± 1.05 [2]	.91 ± .09 [4]	1.33 ± .18 [4]	1.13 ± .16 [2]
11571	2.28 ± .53 [3]	.21 ± .03 [4]	.36 ± .06 [4]	.42 ± .06 [2]
11571 x chr 2	4.56 ± .58 [3]	1.11 ± .09 [6]	1.52 ± .15 [6]	1.29 ± .13 [2]
Control	6.56 ± .58 [5]	.98 ± .08 [9]	1.21 ± .14 [9]	1.34 ± .13 [4]

cates that the disorder does not affect the import, assembly, or stability of the investigated complexes, since all protein levels investigated are quite normal despite the proven lack of activities in the enzyme complexes.

Superoxide can be generated from two potential sites within the bc₁ complex (Raha et al. 2000). Inhibition with antimycin A prevents transfer of electrons from cytochrome b to Q_i, thereby increasing the concentration of Q^o semiquinone. This increase in the Q^o semiquinone species results in an increase in the free-radical species, since superoxide is formed by donation of an electron from Q^o to molecular oxygen (Raha et al. 2000). The antimycin A-dependent increase in production of superoxide was observed for the control human liver mitochondria (table 6). However, liver mitochondria obtained from the autopsied liver of one of the siblings failed to produce any significant increase in free-radical production after addition of antimycin A. Moreover, a statistically significant decrease in free-radical production was observed (table 6). Addition of either myxothiazol (100 μM) or stigmatellin (20 μM) to the liver mitochondria from either the patient or the control produced only a marginal (i.e., statistically nonsignificant) increase in the production of superoxides, above basal levels.

Discussion

Investigations of the cultured skin fibroblasts derived from the three siblings (4142, 4143, and 4144) and from the unrelated patient (11571) showed an increased L/P ratio in the cells, typical of a severe respiratory-chain problem (Robinson et al. 1985, 1990). Deficient activities of NADH cytochrome c reductase, the pyruvate dehydrogenase complex, the 2-oxoglutarate dehydrogenase complex, and succinate cytochrome c reductase suggested the presence of a defect that was decreasing the activity of several mitochondrial enzymes. This was

further confirmed by metabolite analysis of the blood, pointing to a deficiency of both the branched-chain α-keto acid dehydrogenase complex and the glycine-cleavage system. However, the activities of pyruvate carboxylase, mitochondrial aconitase, lipoamide dehydrogenase (i.e., E₃), and citrate synthase were normal. Immunoblot analysis performed on mitochondrial extracts derived from the four patient cells (fig. 2) showed that the pattern of the selected subunits (the PDH complex and the bc₁ complex) was similar to that of the control cell line. This observation suggests that the examined polypeptides are correctly imported into and/or folded within the mitochondria and are assembled into complexes. Previous studies have indicated that patients with a defect in mitochondrial import machinery present with a lack of immunodetectable proteins within the organelle (Jin et al. 1999). Similarly, deficiencies in factors required for assembly of multisubunit complexes produce, at best, only partially assembled complexes (Brasseur et al. 1997; Petruzzella et al. 1998). This would indicate that the above-described genetic defect occurs at the post-translational—and, probably, postassembly—level.

In both families there was no previous history of individuals on the maternal side who had symptoms associated with mitochondrial myopathy. Although mtDNA was not analyzed for pathogenic mutations, the fact that the majority of the affected enzyme complexes have no mitochondrially encoded components makes mitochondrial aberrations an unlikely cause.

In trying to pinpoint a genetic defect that would explain all of the above-described results, we decided to conduct functional complementation analysis using microcell-mediated chromosome transfer. Our results clearly show that introduction of a normal chromosome 2 into the three cell lines with multiple mitochondrial enzyme deficiency can revert their phenotype and restore enzyme activities. Evidence that phenotypic changes were not the mere consequence of manipulations associated with the chromosome-transfer proto-

Table 4
Results of Exclusion-Mapping Performed on Three Siblings

POSITION (cM)	MARKER	ALLELE SIZE IN ^a (base pairs)			Control
		Sibling 1	Sibling 2	Sibling 3	
15	D2S1780	224/232	220/?	224	...
24	D2S423	177/183	174/183	177	177/180
29	D2S1400	110	110/114	110/114	114
42	D2S1360	135/143	135/143	135/159	151/155
41	D2S405	249	249	241/249	249
63	D2S1348	174/180	159/180	174/180	171
70	D2S1356	?	202/208	202/226	202/?
81	D2S1337	145/147	145/147	139/145	143/147
90	D2S441	154	154	154	162/174
95	D2S1394	168	168	168	160/172
100	D2S1777	201	201	201	198/202
107	GATA26G08	137/145	137/145	137/145	...
108	D2S1790	284/328	284/328	284/328	...
120	D2S2972	227/231	227/231	231/239	227/231
125	D2S1784	205/209	201/205	205/209	209
130	D2S410	165/173	163/165?	163/173	165/169
138	D2S1328	140/152	140/152	140	...
146	D2S112	135/137	137/142	133/135	137
150	D2S442	197/201	201/205	197/201	197/205
152	D2S1326	242/254	238/246	242/254	258/266
?	D2S1353	144/147	144	...	144
180	D2S1776	297	297	285/297	297
187	D2S2981	233/249	233/249	241/249	249
189	D2S300	138/142	138	142	142
191	D2S1391	115/123	115/123	123	127/131
201	D2S2735	248/252	248/252	236/244	240/244
212	D2S1369	264/268	264/268	256/268	256
222	D2S434	266/270	270/274	...	266/270
233	D2S1363	186/190	186/190	178/186	182/190
236	GATAE08	191	191	191	...
244	D2S427	254	254	254	214/254
253	D2S407	195	195	195	195
267	D2S2285	253/259	253/259	253/259	...

NOTE.—A set of chromosome 2 markers was used for microsatellite analysis by PCR to isolate regions where the affected family members share common alleles (boxed areas).

^a Single values indicate homozygosity for that individual. The control individual is not related to the affected siblings. An ellipsis (...) is used when definitive designation of alleles was not possible.

cols but were truly controlled by chromosome 2-specific DNA sequences comes from three observations. First, similar changes were not seen when chromosomes other than chromosome 2 were transferred into the same recipient cells. Second, genotype analysis of chromosome 2 markers for the three siblings gave two regions, one at 2p and one at 2q, in which all three siblings had common alleles. Third, only a small (5 cM) portion of the exogenous chromosome 2p in the hybrid cell line resulted in restoration of affected enzyme activities, further attesting to the association between these phenotypic properties and specific DNA sequences. This region, when absent in hybrid cell lines after chromosome

2 transfer, produced clones that still exhibited the mutant phenotype (one clone from patient 4143 and six clones from patient 11571; see the Results section).

Our ultimate goal in this study was to better define the chromosomal region(s) associated with the disorder that causes multiple mitochondrial enzyme malfunctions, in order to facilitate the eventual isolation of the specific gene(s) controlling this disorder. This was achieved with subclones of chromosome 2 hybrids that did not regain their affected enzyme activities. Examination of the integrity of the exogenous chromosome 2 in these clones showed that portions of the chromosome had been lost in each case. Similarly, examination of the integrity of the exogenous chromosome 2 clones that reverted to the mutant phenotype showed that, in these revertants, portions of it had been lost in each case. The smallest deletion that could be defined by this approach extended from A053XF9 to GATA-P132045 (table 5 and fig. 1). Most of the known polymorphisms within this region were noninformative, because the corresponding alleles on the exogenous chromosome were indistinguishable from alleles on the endogenous copies. This complicated attempts at further narrowing this candidate region.

Results from the measurement of bc₁ complex (i.e., complex III) superoxide production (a) indicate that there is only a residual transfer of electrons from ubiquinone to the iron-sulfur center in the deficient cell line and (b) confirm a deficiency in the overall functioning of that complex. This reasoning is based on the observation that inhibition of electron flow between coenzyme b₅₆₂ and Q^o, by antimycin, failed to produce any significant increase in reactive-species production (Raha et al. 2000). How can these observations be compatible with the Western-blot data suggesting that the ISP is fully assembled into the bc₁ complex? Kapazoglou et al. (2000) showed that, in a triple-substitution mutant, C107S/H109R/C112S, the replacement of conserved residues involved in the ligation of the [2Fe-2S] center of the Rieske protein allowed the latter, in isolated chloroplasts, to assemble into the cytochrome bf complex, which nonetheless was an inactive complex. The cytochrome bf complex and the mitochondrial bc₁ complex share a high degree of topological and functional similarity, especially with regard to the Rieske protein (Soriano et al. 1999). Therefore, a lack of incorporation of this [2Fe-2S] center may be a reasonable explanation for the activity loss in these patients.

In the attempt to determine the nature of the genetic defect underlying the above-described disorder, the identification of a common factor or process involved in all the affected enzyme complexes is all-important. An interesting biochemical characteristic of this disorder is the fact that, although the activities of the isolated respiratory enzymes II and III retain quite high intrinsic

Table 5

A Deletion Map for Two Patients with Novel Mitochondrial Syndrome

		RESULTS OF MICROSATELLITE PCR ^a																															
		Noncomplementing Clones							Complementing Clones																								
POSITION (cM)	MARKER	Cell Line 4143	Cell Line 11571							Cell Line 4143										Cell Line 11571													
		1	2	3	4	5	6	7	8	9	10	11	12	13	14	15	16	17	18	19	20	21	22	23	24	25	26	27	28	29	30		
84	A053XF9	NI	-	-	-	-	+	-	NI	NI	NI	NI	NI	NI	NI	NI	NI	NI	NI	NI	NI	NI	+	+	+	+	+	?	+	+	+	+	
86	A346YB5	NI	-	-	-	-	-	-	NI	NI	NI	NI	NI	NI	NI	NI	NI	NI	NI	NI	NI	NI	+	+	+	+	?	+	+	+	+	+	
88	309VC1	NI	-	-	-	-	-	-	NI	NI	NI	NI	NI	NI	NI	NI	NI	NI	NI	NI	NI	NI	+	+	+	+	+	+	+	+	+	+	
89	GATA-P32045	NI	+	-	-	-	-	-	NI	NI	NI	NI	NI	NI	NI	NI	NI	NI	NI	NI	NI	NI	+	+	+	+	+	?	+	+	+	+	
90	GATA-P18038	-	+	-	-	-	-	-	-	+	+	+	+	+	+	?	+	+	+	+	+	+	+	+	+	+	+	+	+	+	+	+	
90	D2S441	-	+	-	-	-	-	-	-	+	+	+	+	+	+	+	+	+	+	+	+	+	+	+	+	?	+	?	?	+	+	+	
92	D2S1355	NI	+	-	-	+	-	-	NI	NI	NI	NI	NI	NI	NI	NI	NI	NI	NI	NI	NI	NI	+	+	+	+	+	?	+	+	+	+	
	D2S303	-	NI	NI	NI	NI	NI	NI	-	+	-	+	+	+	+	+	+	+	+	+	+	+	NI	NI	NI	NI	NI	NI	NI	NI	NI	NI	
95	D2S1394	-	NI	NI	NI	NI	NI	NI	-	+	-	+	+	+	?	?	+	?	+	+	+	+	NI	NI	NI	NI	NI	NI	NI	NI	NI	NI	
	D2S1398	-	+	-	-	+	-	-	-	+	-	?	+	+	+	+	+	+	+	+	+	+	+	+	+	?	+	+	+	-	+	+	
98	D2S1351	NI	+	-	-	+	-	-	NI	NI	NI	NI	NI	NI	NI	NI	NI	NI	NI	NI	NI	NI	+	+	+	+	+	?	-	+	?	+	
100	GATA-P18021	-	NI	NI	NI	NI	NI	NI	-	+	-	+	+	+	+	?	+	+	+	+	+	+	NI	NI	NI	NI	NI	NI	NI	NI	NI	NI	
	D2S116	-	+	-	-	+	-	-	-	+	-	+	+	+	+	+	+	+	+	+	+	+	+	+	+	+	+	?	-	+	+	+	
107	GATA-P9284	-	+	-	-	+	-	-	-	+	-	+	+	+	+	+	+	+	+	+	+	+	+	+	+	+	+	?	-	+	+	+	
108	D2S1790	-	+	-	-	+	-	+	-	+	-	+	+	+	+	+	+	?	+	+	+	+	+	+	+	+	?	-	+	+	+		
138	D2S1328	-	+	+	-	+	-	+																									
148	D2S1334	-	+	+	+	+	+	+																									
180	D2S1776	-	+	+	+	+	+	+																									
191	D2S1391	-	+	-	+	+	+	-																									
233	D2S1363	-	+	-	+	+	-	-	-	+	-	+	+	+	+	+	+	+	+	+	+	+	+	+	+	+	+	+	+	+	+	+	+
236	D2S439	NI	+	-	+	+	-	-	NI	NI	NI	NI	NI	NI	NI	NI	NI	NI	NI	NI	NI	NI	+	+	+	+	+	+	-	+	+	+	
244	D2S427	NI	+	-	+	+	-	-	NI	NI	NI	NI	NI	NI	NI	NI	NI	NI	NI	NI	NI	NI	+	+	+	?	+	+	-	-	+	+	
253	D2S336	+	+	-	+	+	-	-	-	+	-	+	-	?	+	+	?	+	+	+	+	+	+	+	+	+	+	+	-	-	+	+	
253	D2S407	NI	+	-	+	+	-	-	NI	NI	NI	NI	NI	NI	NI	NI	NI	NI	NI	NI	NI	NI	+	+	?	+	+	+	-	-	+	+	

^a Plus (+) signs and minus (-) signs indicate the presence or absence, respectively, of STS markers. NI = marker not informative. ?- unable to clearly include or exclude marker. Recipient patient-derived cell lines (either 4143 or 11571) are indicated above each set of results. Only noncomplemented clones were analyzed using markers D2S1328, D2S1334, D2S1779, and D2S1391. Markers D2S2110, D2S1777, D2S428, D2S2213, and MR14788 were not informative for all analyzed clones and therefore are not included. The candidate region is boxed.

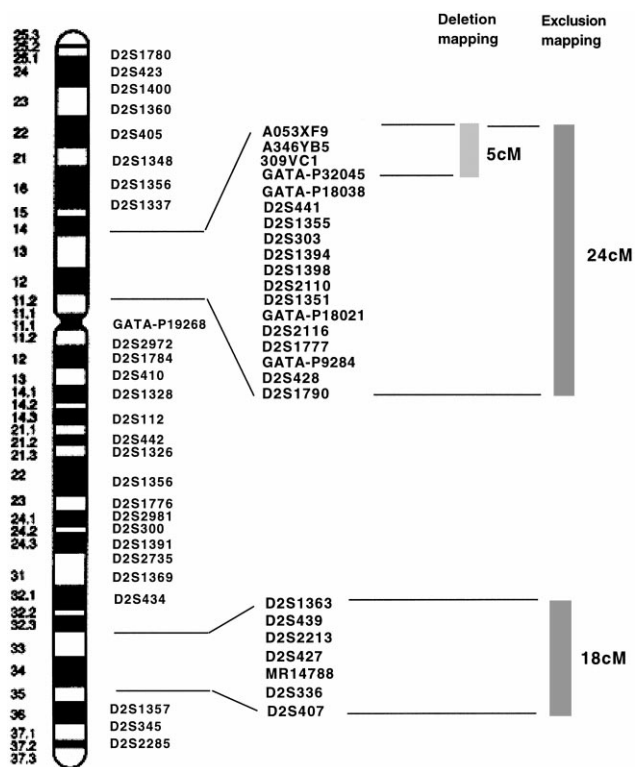


Figure 1 Ideogram of human chromosome 2 showing results of exclusion and deletion mapping for the mitochondrial multienzyme-deficiency phenotype. Microsatellite markers that were used in the analysis are indicated. The thicker vertical lines to the right of the markers indicate regions that were obtained by either deletion or exclusion mapping.

values (45%–60%), the combined activities of complexes I+III and complexes II+III are more dramatically suppressed (table 2). These results could suggest a defect in the mitochondrial coenzyme Q content and/or function, since both system I+III and system II+III require it as an electron carrier. Similar biochemical findings were reported, in a case of intrinsic muscle coenzyme Q deficiency, by Boitier et al. (1998). However, this hypothesis cannot explain the observed deficiencies of either the mitochondrial dehydrogenases (PDHC, 2-oxoglutarate dehydrogenase complex [OGDHC], and branched chain α -ketoacid dehydrogenase complex [BCKDHC]) or the glycine-cleavage system.

A more plausible explanation is provided by the possibility that the unknown factor is somehow involved in the metabolism of sulfur in the mitochondria and/or the supply of sulfur to the affected complexes. Sulfur is an essential part of lipoic acid, which is a cofactor shared by the PDH complex, the 2-oxoglutarate dehydrogenase complex, the branched-chain α -keto acid dehydrogenase complex, and the glycine-cleavage system. Sulfur is also a part of respiratory complexes II

and III, in the form of the iron-sulfur centers, and cysteine desulfurase and sulfur transferase are required for assembly. In contrast, assembled sulfur-containing active centers are not a part of either the pyruvate carboxylase complex or the citrate synthase complex.

Given the second hypothesis, how can we explain the fact that mitochondrial aconitase—an iron-sulfur center-containing enzyme—is not affected? In the past, it has been reported that, in respiratory-chain abnormalities involving iron-sulfur clusters, mitochondrial aconitase activity was also depressed (Hall et al. 1993; Rotig et al. 1997). However, no link was reported between these disorders and the activities of mitochondrial dehydrogenases. Furthermore, in the case of Friedreich

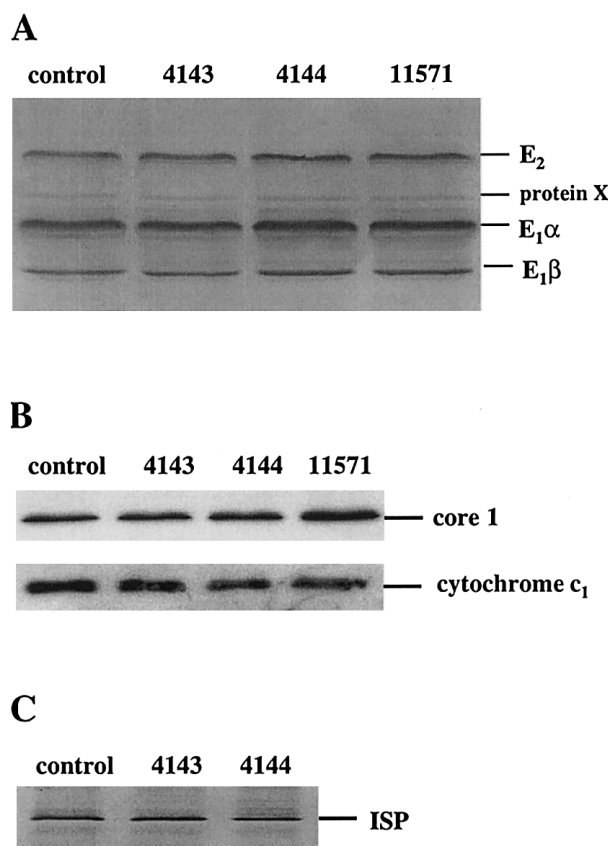


Figure 2 Western blot analysis of endogenous expression of pyruvate dehydrogenase complex (A), core I and cytochrome c of the bc_1 complex (B), and bc_1 complex ISP (C). Aliquots (60 μ g) of total protein from mitochondria-rich fractions were separated on 12.5% SDS/polyacrylamide gel and then were transferred to nitrocellulose. The filter was probed with antibody against affinity-purified pig heart PDH complex raised in rabbit (A), or with antibody against either holo bc_1 complex, or bc_1 -ISP raised in rabbit (B and C). The mitochondrial extracts present on the gels are, from left to right, control cultured-skin fibroblasts (lane 1), skin fibroblasts from two affected siblings (4143 and 4144) (lanes 2 and 3), and fibroblasts from the unrelated patient (11571) (lane 4). In C the sample for the unrelated patient is not present.

Table 6**Effect of Inhibitor-Dependent Superoxide Production in Control and Multi-Complex Deficient Liver Mitochondria**

INHIBITOR	MEAN \pm SEM SUPEROXIDE FORMATION ^a [NO. OF DETERMINATIONS] (rel V/min)	
	Control	Sibling 1
No inhibitor	343 \pm 49 [4]	349 \pm 24 [4]
Antimycin A (20 μ g/ml)	1,402 \pm 123 [4]	107 \pm 46 [8]
Stigmatellin (20 μ M)	380 \pm 33 [4]	408 \pm 61 [4]
Myxothiazol (10 μ M)	413 \pm 67 [4]	431 \pm 71 [4]

^a Monitored using lucigenin luminescence after addition of succinate (5 mM) to mitochondrial suspension in the presence or absence of either antimycin A (see Subjects, Materials, and Methods section), stigmatellin, or myxothiazol. Values were standardized to the activity of citrate synthase, a mitochondrial matrix marker.

ataxia, in which mutated frataxin triggers aconitase and mitochondrial iron-sulfur respiratory-enzyme deficiency, the defect stems from abnormal iron homeostasis rather than from sulfur homeostasis. Therefore, it is very possible that the mechanisms of sulfur insertion into iron-sulfur centers for respiratory-chain complexes and lipoic acid are different from the mechanisms required for aconitase.

The nearly completed Human Genome Project should provide sequence information about the isolated chromosome 2 interval where the locus for the unknown gene is most likely located. At the time of submission, extensive searches throughout this region, which contains ≥ 30 predicted genes, have yielded no obvious candidates. Future work will determine whether the gene product involved proves to have either a sulfur transferase activity or a cysteine desulfurase activity. Examination of data from the Human Genome Project that are particular to this locus reveals that it is a relatively gene-rich region with a mix of well-characterized genes, such as malate dehydrogenase, and other less-well-defined genes. After extensive analysis, we could find, in the region of chromosome 2p14-2p13, no indication of either sulfur transferase genes or genes involved in ubiquinone synthesis.

Acknowledgment

We thank the Medical Research Council of Canada for the support of this investigation.

References

Bodnar AG, Cooper JM, Leonard JV, Schapira AH (1995) Respiratory-deficient human fibroblasts exhibiting defective mitochondrial DNA replication. *Biochem J* 305:817-822
 Boitier E, Degoul F, Desguerre I, Charpentier C, Francois D,

Ponsot G, Diry M, Rustin P, Marsac C (1998) A case of mitochondrial encephalomyopathy associated with a muscle coenzyme Q10 deficiency. *J Neurol Sci* 156:41-46
 Brasseur G, Tron G, Dujardin G, Slonimski PP, Brivet-Chevillotte P (1997) The nuclear ABC1 gene is essential for the correct conformation and functioning of the cytochrome bc₁ complex and the neighbouring complexes II and IV in the mitochondrial respiratory chain. *Eur J Biochem* 246: 103-111
 Brown GK, Haan EA, Kirby DM, Scholem RD, Wraith JE, Rogers JG, Danks DM (1988) "Cerebral" lactic acidosis: defects in pyruvate metabolism with profound brain damage and minimal systemic acidosis. *Eur J Pediatr* 147:10-14
 Brown MD, Wallace DC (1994) Molecular basis of mitochondrial DNA disease. *J Bioenerg Biomembr* 26:273-289
 Compton, T (1993) An immortalized human fibroblast cell line is permissive for human cytomegalovirus infection. *J Virol* 67:3644-3648
 Craig EE, Hood DA (1997) Influence of aging on protein import into cardiac mitochondria. *Am J Physiol* 272: H2983-H2988
 Cuthbert AP, Trott DA, Ekong RM, Jezzard S, England NL, Themis M, Todd CM, Newbold RF (1995) Construction and characterization of a highly stable human:rodent monochromosomal hybrid panel for genetic complementation and genome mapping studies. *Cytogenet Cell Genet* 71: 68-76
 Darley-Usmar VM, Rickwood D, Wilson MT (eds) (1987) Mitochondria: a practical approach. IRL Press, Oxford
 DiMauro S, Zeviani M, Servidei S, Prella A, Miranda AF, Bonilla E, Schon EA (1988) Biochemical and molecular aspects of cytochrome c oxidase deficiency. In: DiDonato S, Mamoli A, Rowland LP (eds) *Advances in neurology*. Vol 48, Raven Press, New York, pp 93-105
 Ekong J (1982) Studies of the deficiencies of the pyruvate dehydrogenase complex. MSc thesis, University of Toronto, Toronto
 Fournier RE (1981) A general high-efficiency procedure for production of microcell hybrids. *Proc Natl Acad Sci USA* 78:6349-6353
 Grossman LI, Shoubridge EA (1996) Mitochondrial genetics and human disease. *Bioessays* 18:983-991
 Hall RE, Henriksson KG, Lewis SF, Haller RG, Kennaway NG (1993) Mitochondrial myopathy with succinate dehydrogenase and aconitase deficiency: abnormalities of several iron-sulfur proteins. *J Clin Invest* 92:2660-2666
 Hatefi Y, Stiggall DL (1978) Preparation and properties of succinate: ubiquinone oxidoreductase (complex II). *Methods Enzymol* 53:21-27
 Hoppel CL, Kerr DS, Dahms B, Roessmann U (1987) Deficiency of the reduced nicotinamide adenine dinucleotide dehydrogenase component of complex I of mitochondrial electron transport. *J Clin Invest* 80:71-77
 Hyland K, Leonard JV (1983) Revised assays for the investigation of congenital lactic acidosis using ¹⁴C keto acids, eliminating problems associated with spontaneous decarboxylation. *Clin Chim Acta* 133:177-187
 Jin H, Kendall E, Freeman TC, Roberts RG, Vetrie DL (1999) The human family of deafness/dystonia peptide (DDP) related mitochondrial import proteins. *Genomics* 61:259-267

- Jin H, May M, Tranebjaerg L, Kendall E, Fontan G, Jackson J, Subramony SH, Arena F, Lubs H, Smith S, Stevenson R, Schwartz C, Vetrie D (1996) A novel X-linked gene, DDP, shows mutations in families with deafness (DFN-1), dystonia, mental deficiency and blindness. *Nat Genet* 14:177-180
- Kapazoglou A, Mould RM, Gray JC (2000) Assembly of the Rieske iron-sulphur protein into the cytochrome *bc*₁ complex in thylakoid of isolated pea chloroplasts. *Eur J Biochem* 267:352-360
- Kennaway NG (1988) Defects in the cytochrome *bc*₁ complex in mitochondrial diseases. *J Bioenerg Biomembr* 20:325-352
- Koehler CM, Leuenberger D, Merchant S, Renold A, Junne T, Schatz G (1999) Human deafness dystonia syndrome is a mitochondrial disease. *Proc Natl Acad Sci USA* 96:2141-2146
- Leach RJ, Thayer MJ, Schafer AJ, Fournier RE (1989) Physical mapping of human chromosome 17 using fragment-containing microcell hybrids. *Genomics* 5:167-176
- Lombes A, Mendell JR, Nakase H, Barohn RJ, Bonilla E, Zeviani M, Yates AJ, Omerza J, Gales TL, Nakahara K (1989) Myoclonic epilepsy and ragged-red fibers with cytochrome oxidase deficiency: neuropathology, biochemistry, and molecular genetics. *Ann Neurol* 26:20-33
- Lombes A, Romero NB, Touati G, Frachon P, Cheval MA, Giraud M, Simon D, Ogier de Baulny H (1996) Clinical and molecular heterogeneity of cytochrome *c* oxidase deficiency in the newborn. *J Inher Metab Dis* 19:286-295
- Moraes CT, Kenyon L, Hao H (1999) Mechanisms of human mitochondrial DNA maintenance: the determining role of primary sequence and length over function. *Mol Biol Cell* 10:3345-3356
- Moreadith RW, Batshaw ML, Ohnishi T, Kerr D, Knowx B, Jackson D, Hruban R, Olson J, Reynafarse B, Lehninger AL (1984) Deficiency of the iron-sulfur clusters of mitochondrial reduced nicotinamide-adenine dinucleotide-ubiquinone oxidoreductase (complex I) in an infant with congenital lactic acidosis. *J Clin Invest* 74:685-697
- Morten KJ, Caky M, Matthews PM (1998) Mechanisms of expression of pyruvate dehydrogenase deficiency caused by an E₁ α subunit mutation. *Neurology* 51:1324-1330
- Newbold RF, Cuthbert AP (1996) Mapping human senescence genes using interspecific monochromosome transfer. In: Freshney RI, Freshney MG (eds) *Culture of immortalized cells*. Wiley-Liss, New York, pp 53-75
- Petruzzella V, Tiranti V, Fernandez P, Ianna P, Carozzo R, Zeviani M (1998) Identification and characterization of human cDNAs specific to BCS1, PET112, SCO1, COX15, and COX11, five genes involved in the formation and function of the mitochondrial respiratory chain. *Genomics* 54:494-504
- Pitkänen S, Raha S, Robinson BH (1996) Diagnosis of complex I deficiency in patients with lactic acidemia using skin fibroblast cultures. *Biochem Mol Med* 59:134-137
- Pitkänen S, Robinson BH (1996) Mitochondrial complex I deficiency leads to increased production of superoxide radicals and induction of superoxide dismutase. *J Clin Invest* 98:345-351
- Racker E (1950) Spectrophotometric measurements of the enzymatic formation of fumaric and cis-aconitic acids. *Biochem Biophys Acta* 4:211-214
- Raha S, McEachern GE, Myint AT, Robinson BH (2000) Superoxides from mitochondrial complex III: the role of manganese superoxide dismutase. *Free Rad Biol Med* 29:170-180
- Robinson BH (1995) Lactic acidemia (disorders of pyruvate carboxylase, pyruvate dehydrogenase). In: Scriver CR, Beaudet AL, Sly WS, Valle D (eds) *The metabolic and molecular bases of inherited disease*. 7th ed. McGraw-Hill, New York, pp 1479-1492
- Robinson BH, DeMeirlier L, Glerum DM, Sherwood WG, Becker L (1987a) Clinical presentation of patients with mitochondria respiratory chain defects NADH coenzyme Q reductase and cytochrome oxidase: clues to the pathogenesis of Leigh's Disease. *J Pediatr* 110:216-222
- Robinson BH, Glerum DM, Chow W, Petrova-Benedict R, Lightowers R, Capaldi R (1990) The use of skin fibroblast cultures in the detection of respiratory chain defects in patients with lactic acidemia. *Pediatr Res* 28:549-555
- Robinson BH, MacKay N, Goodyer P, Lancaster G (1985) Defective intramitochondrial NADH oxidation in skin fibroblasts from an infant with fatal neonatal lactic acidemia. *Am J Hum Genet* 37:938-946
- Robinson JB, Brent LG, Sumegi B, Srere PA (1987b) An enzymatic approach to the study of the Krebs tricarboxylic acid cycle. In: Darley-Usmar VM, Rickwood D, Wilson MT (eds) *Mitochondria: a practical approach*. IRL Press, Oxford, pp 153-170
- Rotig A, de Lonlay P, Chretien D, Foury F, Koenig M, Sidi D, Munnich A, Rustin P (1997) Aconitase and mitochondrial iron-sulphur protein deficiency in Friedreich ataxia. *Nat Genet* 17:215-217
- Sheu KRF, Ju CW, Utter MF (1981) Pyruvate dehydrogenase complex in normal and deficient fibroblasts. *J Clin Invest* 67:1463-1471
- Soriano GM, Ponamarev MV, Carrell CJ, Xia D, Smith JL, Cramer WA (1999) Comparison of the cytochrome *bc*₁ complex with the anticipated structure of the cytochrome *b*₆f complex: le plus ca change le plus c'est la meme chose. *J Bioenerg Biomembr* 31:201-213
- Valnot I, Kassis J, Chretien D, de Lonlay P, Parfait B, Munnich A, Kachaner J, Rustin P, Rotig A (1999) A mitochondrial cytochrome *b* mutation but no mutations of nuclearly encoded subunits in ubiquinol cytochrome *c* reductase (complex III) deficiency. *Hum Genet* 104:460-466
- van Dijk JM, Kutejova E, Suda K, Perecko D, Schatz G, Suzuki CK (1998) The ATPase and protease domains of yeast mitochondrial Lon: roles in proteolysis and respiration-dependent growth. *Proc Natl Acad Sci USA* 95:10584-10589
- Vazquez-Acevedo M, Antaramian A, Corona N, Gonzalez-Halphen D (1993) Subunit structures of purified beef mitochondrial cytochrome *bc*₁ complex from liver and heart. *J Bioenerg Biomembr* 25:401-410
- Yu L, Yu CA (1982) Quantitative resolution of succinate-cytochrome *c* reductase into succinate-ubiquinone and ubiquinol-cytochrome *c* reductases. *J Biol Chem* 257:2016-2021
- Zeviani M, Bonilla E, DeVivo DC, DiMauro S (1989) Mitochondrial diseases. *Neurol Clin* 7: 123-156