

Biologic Effects of Oil Fly Ash

Andrew J. Ghio,¹ Robert Silbajoris,¹ Johnny L. Carson,² and James M. Samet¹

¹National Health and Environmental Effects Research Laboratory, Office for Research and Development, U.S. Environmental Protection Agency, Research Triangle Park, North Carolina, USA; ²Department of Pediatrics and the Center for Environmental Medicine and Lung Biology, University of North Carolina, Chapel Hill, North Carolina, USA

Epidemiologic studies have demonstrated increased human morbidity and mortality with elevations in the concentration of ambient air particulate matter (PM). Fugitive fly ash from the combustion of oil and residual fuel oil significantly contributes to the ambient air particle burden. Residual oil fly ash (ROFA) is remarkable in the capacity to provoke injury in experimental systems. The unique composition of this emission source particle makes it particularly useful as a surrogate for ambient air PM in studies of biologic effects testing the hypothesis that metals mediate the biologic effects of air pollution particles. A majority of the *in vitro* and animal model investigations support the postulate that transition metals present in ROFA (especially vanadium) participate in Fenton-like chemical reactions to produce reactive oxygen species. This is associated with tyrosine phosphorylation, nuclear factor kappa B and other transcription factor activation, induction of inflammatory mediator expression, and inflammatory lung injury. It is also evident that vanadium accounts for a significant portion of the biologic activity of ROFA. The extrapolation of this body of investigation on ROFA to the field of ambient air PM is difficult, as particles in numerous environments have such small amounts of vanadium. **Key words:** air pollution, lung diseases, oxidative stress, vanadium. *Environ Health Perspect* 110(suppl 1):89–94 (2002).

<http://ehpnet1.niehs.nih.gov/docs/2002/suppl-1/89-102ghio/abstract.html>

Epidemiologic studies have demonstrated increased human morbidity and mortality (1) with elevations in the concentration of ambient air particulate matter (PM). Fine particles, with mass median aerodynamic diameters (MMAD) less than 2.5 μm , are more closely associated with adverse health effects of PM than coarser particles (2). Fine particles often represent anthropogenic sources, as they frequently result from an incomplete oxidation of carbonaceous materials. The inorganic residue that remains after burning such a substance is termed “fly ash.” Fly ash from fossil and waste fuel combustion contributes more than 2.5×10^5 tons annually to the ambient air PM burden in the United States (3). Although the ash content of oil used for electric power generation is two to three orders of magnitude less than that of coal, many oil-fired power plants employ few or no particle emission abatement technologies (4). Consequently, fugitive fly ash from the combustion of oil and residual fuel oil contributed 76,000 and 49,000 tons, respectively, to the national ambient particle burden in 1992 (5).

Oil fly ash is frequently less than 2.5 μm in MMAD. This combustion product is principally inorganic. However, analyses of fly ashes are performed after complete oxidation of the sample to stable metal oxides. This can lead to the incorrect conclusion that fly ashes are simple, insoluble, and unreactive pollutant products. Comparable to ambient air pollution particles, oil fly ash is chemically complex and includes sulfates, silicates, carbon- and nitrogen-containing

compounds, contaminants of the fuel, and additives. Metals, including iron, vanadium, and nickel, are present in high concentrations as water-soluble salts in fly ash (6).

Tropospheric concentrations of vanadium are often employed as a marker of the contribution of oil fly ash to the total PM level in an air shed (6). In a rural setting, vanadium in ambient air can vary between 25 and 75 ng/m^3 , whereas in an urban environment, this value is 60–300 ng/m^3 and can increase 6-fold in the winter (7). Although this metal is an essential trace element for humans and certain animals, it occurs sparsely in nature (8). Certain plants can have higher levels of vanadium (e.g., sugar beets, vines, beech and oak trees), but the greatest concentrations are found in lower marine animals (e.g., shellfish) (8). Because oil is derived from fossilized marine organisms, vanadium is found in this fuel at a high average concentration and, subsequently, in its fly ash (Figure 1A,B). Higher contents of the metal occur in the heavy oils left (i.e., the residual) after the more volatile fractions such as petrol, paraffin, and diesel oil have been distilled, hence the term “residual oil” fly ash (ROFA) (8). In addition to metals, sulfates are in abundance (Figure 1A,C).

ROFA is remarkable in its capacity to induce lung injury in experimental animal models (9). Because ROFA is rich in metals, with little organic component, it has been particularly useful as a surrogate for ambient air PM in studies of biologic effect, testing the hypothesis that metals mediate the biologic effects of air pollution particles.

The mechanism of lung injury after exposure to ambient air PM is not known. Injury has been postulated to be mediated either by metal-catalyzed oxidant generation or by metal ion dysregulation of phosphotyrosine metabolism, or possibly elements of both mechanisms (Figure 2) (10). These events are then proposed to result in phosphorylation-dependent cell signaling, an activation of specific transcription factors such as nuclear factor kappa B (NF κ B) and AP-1, an increased expression of proinflammatory proteins whose genes have binding sites for these transcription factors in their promoter regions, and finally leading to an inflammatory injury to the lung. We review the biologic effects of oil fly ash on both cells and tissues, specify the association of this effect with vanadium, and opine on the relevance of this investigation to human morbidity and mortality following exposure to air pollution particles.

Effects of Residual Oil Fly Ash on Cells

Epithelial cells of the respiratory tract not only function to provide a structural barrier to inhaled agents but are now recognized as critical participants in the function of the lung, partly through their production of inflammatory mediators. Epithelial cells take up ROFA into pits/vesicles that appear to be clathrin-coated (Figure 3A,B). The particle then generates oxygen-based free radicals to present an oxidative stress to the cell (11,12) comparable that in to acellular systems (9). This cellular production of oxidants can be inhibited by either the metal chelator deferoxamine or the antioxidants *N*-acetylcysteine and dimethylthiourea (DMTU). Exposure to the ash results in increased epithelial permeability, cell detachment, and a lytic injury

Address correspondence to A. Ghio, Campus Box 7315, Human Studies Division, U.S. EPA, 104 Mason Farm Rd., Chapel Hill, NC 27599 USA. Telephone: (919) 966-0670. Fax: (919) 966-6271. E-mail: ghio.andy@epa.gov

This report has been reviewed by the National Health and Environmental Effects Research Laboratory, U.S. Environmental Protection Agency and approved for publication. Approval does not signify that the contents necessarily reflect the views and policies of the Agency nor does mention of trade names or commercial products constitute endorsement or recommendation for use.

Received 4 April 2001; accepted 18 September 2001.

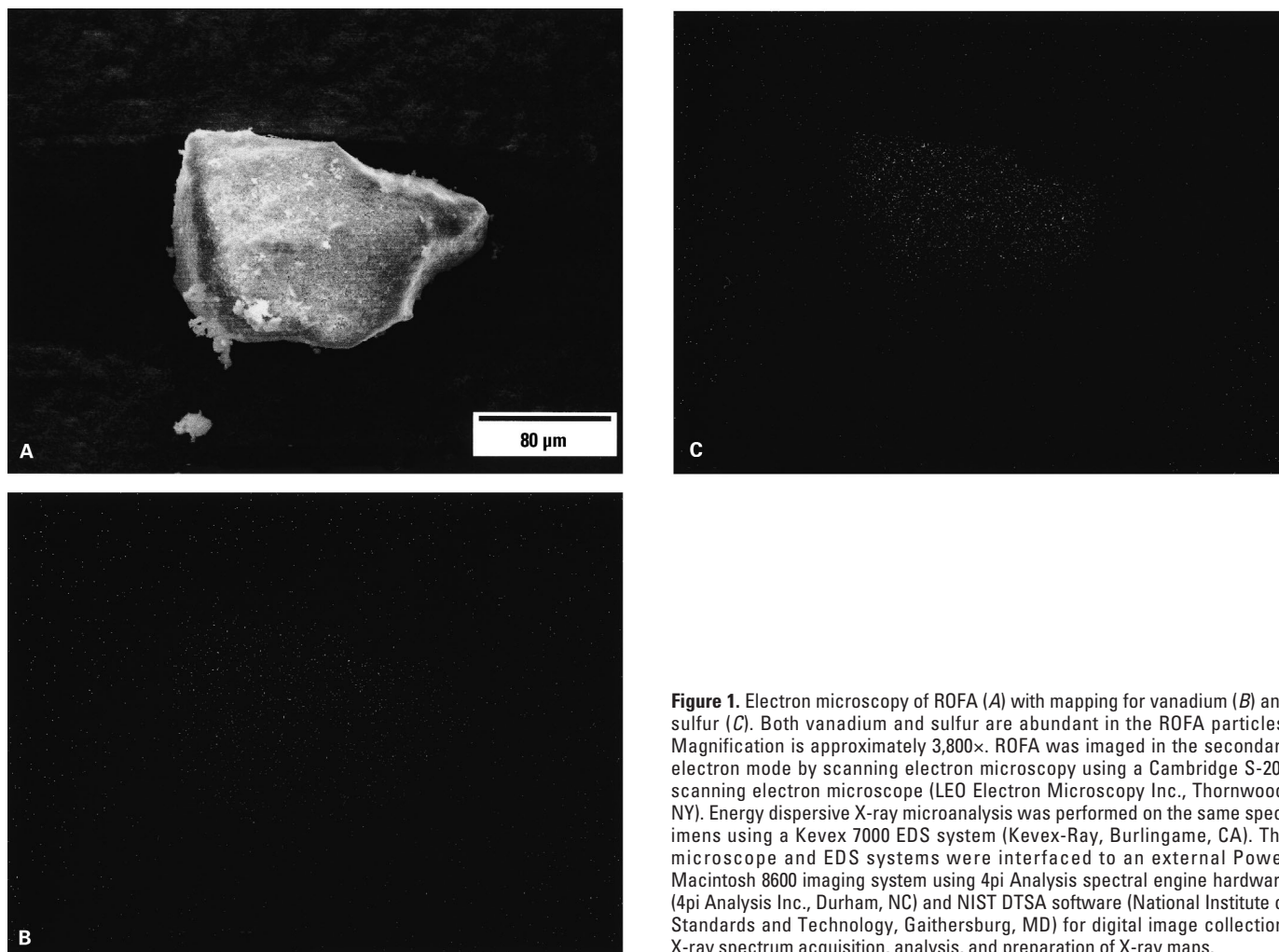


Figure 1. Electron microscopy of ROFA (A) with mapping for vanadium (B) and sulfur (C). Both vanadium and sulfur are abundant in the ROFA particles. Magnification is approximately 3,800 \times . ROFA was imaged in the secondary electron mode by scanning electron microscopy using a Cambridge S-200 scanning electron microscope (LEO Electron Microscopy Inc., Thornwood, NY). Energy dispersive X-ray microanalysis was performed on the same specimens using a Kevex 7000 EDS system (Kevex-Ray, Burlingame, CA). The microscope and EDS systems were interfaced to an external Power Macintosh 8600 imaging system using 4pi Analysis spectral engine hardware (4pi Analysis Inc., Durham, NC) and NIST DTSA software (National Institute of Standards and Technology, Gaithersburg, MD) for digital image collection, X-ray spectrum acquisition, analysis, and preparation of X-ray maps.

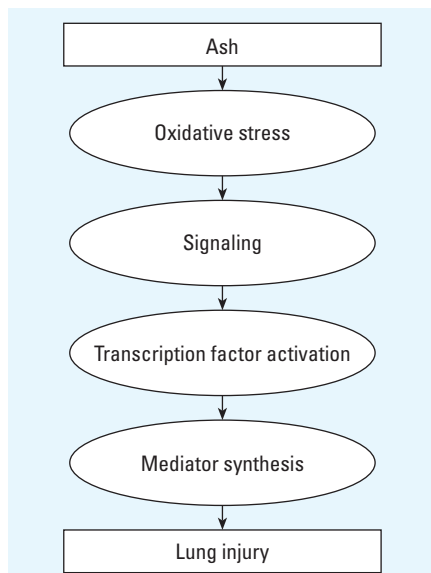


Figure 2. Schematic of the proposed mechanism for the biologic effect of ROFA.

with release of lactate dehydrogenase (13). The dependence of these cytotoxic effects of ROFA on the generation of an oxidative stress is supported by the protective effect of the antioxidant DMTU on cell permeability after exposure to this emission source PM (13,14).

As mentioned earlier, incubation of respiratory epithelial cells with ROFA is associated with the initiation of phosphorylation-dependent signaling reactions that may be modulated by specific redox changes (15). Interestingly, redox-active vanadium compounds can reproduce these events, whereas catalytically active iron and nickel compounds have no effect (15). One transcription factor known to be associated with oxidant responses is NF κ B. NF κ B is normally sequestered in the cytoplasm as an inactive multiunit complex bound by the inhibitory protein I κ B. In the nucleus, NF κ B binds to promoter and enhancer regions of a multitude of genes involved in the inflammatory response, including cytokines, chemokines, and growth factors. It is postulated that these genes then function to initiate, amplify, and coordinate the

inflammatory response. ROFA induces phosphorylation and degradation of I κ B, with a resulting translocation of the active dimer into the nucleus in respiratory epithelial cells (16). ROFA-induced activation of NF κ B is blocked by metal chelators and free radical scavengers, suggesting that this activation is dependent on the generation of oxidants (16).

Respiratory epithelial cells exposed to either ROFA or vanadium, but not iron or nickel, showed increased messenger RNA (mRNA) and protein expression of numerous cytokines, including interleukin (IL)-6, IL-8, and tumor necrosis factor (17). In addition, prostaglandin H synthase 2 expression is induced, and there is concomitant enhanced secretion of prostaglandins E₂ and F_{2 α} from normal human airway epithelial cells exposed to ROFA (18). As with NF κ B activation, deferoxamine and an antioxidant diminish the release of inflammatory mediators induced by ROFA in these cells (17).

Similar to epithelial cells, ROFA exposure can result in an intracellular oxidant stress within alveolar macrophages, which

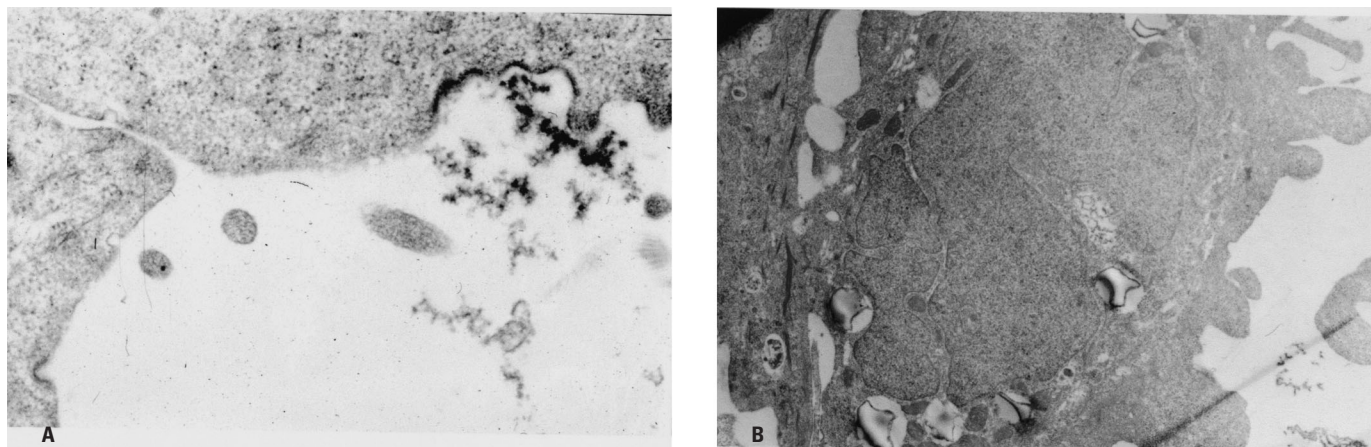


Figure 3. Incubation of BEAS-2B cells (90–100% confluence) in plastic, 12-well plates (KGM; Clonetics, San Diego, CA) with 200 μg ROFA/mL for 24 hr results in uptake of particulate components of the ash. Coated pits are evident at the membrane (A) and putative clathrin-coated vesicles are shown with components enclosed (B). Magnification is approximately 1,500 \times .

may contribute to cellular activation and production of proinflammatory mediators (19–21). The primary source of these oxidants is likely the NADPH oxidase activity in the alveolar macrophage itself. However, transition metals may also present direct oxidative stress to this cell (22). Relative to the epithelial cells, cytotoxicity appears to occur at lower particle concentrations, and the magnitude of cytokine release is reduced (23). Comparable to respiratory epithelial cells, the oxidant burst and mediator release after incubation of macrophages with ROFA appears to be driven by vanadium and can be inhibited by deferoxamine and/or antioxidants, suggesting both intrinsic and extrinsic sources for radical generation by alveolar macrophages (19,21).

Physiologic, Biochemical, Cellular, and Molecular Effects of Residual Oil Fly Ash in Animals

In vivo oxidative stress in the lungs of animals instilled with ROFA has been verified by electron spin resonance (ESR) (24). This ESR signal can be reproduced by treatment with vanadium, but not iron or nickel compounds (24). The activation of both phosphorylation-dependent kinases (i.e., mitogen-activated protein kinases) in the rat lung following instillation with ROFA has been reported (25). Figure 4 shows the effect of ROFA on the translocation of the NF κ B subunit P65 and phosphorylation of the transcription factors cAMP-responsive element binding, activating transcription factor 2, and c-Jun in the rat lung. Furthermore, mRNA and protein expression of mediators of inflammation and fibrosis are also elevated in these tissues following ROFA instillation (26). Finally,

exposure to the emission source particles results in a dose-dependent influx of inflammatory cells (9,27). This is almost always neutrophilic, but occasional eosinophilic infiltration into the lower respiratory tract has been noted (27). The peak of this influx occurs 18–24 hr after exposure.

Injury to the lung in the animal is evident within 24 hr of exposure, with detachment of ciliated and mucus cells from the epithelial lining of the terminal bronchioles accompanied by hemorrhage. Inhalation or instillation of an equivalent concentration of ROFA evokes pulmonary inflammatory responses that are qualitatively and quantitatively similar (28). Whereas incursion of inflammatory cells appears to best correlate with vanadium exposure, injury assessed as protein concentrations in the lavage fluid correlates best with the nickel content in ROFA (29). The cellular influx persists 96 hr later, and resolution occurs slowly (9). Instillations of larger amounts of oil fly ash (500 μg or greater) can induce a rapid onset of noncardiogenic pulmonary edema (30).

Exposures to an aqueous extract of ROFA produce effects very similar to those induced by unfractionated ROFA (31). In marked contrast, the water-insoluble component has minimal effect on the lungs of the rats (31). In animal models of compromised cardiopulmonary function (e.g., spontaneously hypertensive rats), lung injury after ROFA can be considerably more extensive (3,32,33). Pulmonary inflammatory injury induced by ROFA is reproducible by instillation of a mixture of soluble forms of vanadium, nickel, and iron in the proportions found in a saline leachate of ROFA (31). Pretreatment with DMTU significantly decreased the number of neutrophils present in bronchoalveolar lavage fluid, further supporting metal-catalyzed

oxidative stress as a factor determining inflammatory injury after ROFA instillation in animals (13). Finally, animals exposed to vanadium-containing compounds demonstrate neutrophilic inflammatory injury of the bronchi and the distal lung accompanied by a significant airflow limitation, confirming that it is a significant determinant of injury presented by ROFA in the respiratory system (34). These results suggest that transition metals play a key role in mediating the injury seen after ROFA instillation.

Inflammatory lung injury after ROFA is accompanied by airway hyperreactivity (35) and an increase in susceptibility to infections (9) in normal animals. The metal composition of the ash appears critical to the development of airway hyperreactivity, as assessed by acetylcholine challenge (9). In addition, there are effects of ROFA on sensitization to allergens in animal models of pulmonary allergy, with significant elevations in eosinophils, IL-10, antigen specific immunoglobulin E, and associated immediate bronchoconstriction responses to antigen challenge (36–39). This effect can be reproduced by the metal leachate of ROFA as well as individual metallic constituents of ROFA (35) and can be abrogated by DMTU pretreatment (40). These results suggest that the oxidative stress presented by metals present in ROFA is responsible for the airway hyperreactivity and sensitization to allergens (41).

There are also effects of ROFA exposure on heart function, with a bradycardic response in healthy animals that persists up to 48 hr after instillation, implicating both conductive and hypoxemic arrhythmogenic mechanisms leading to cardiac-related deaths (30). A related extrapulmonary impact of ROFA is an elevation in plasma concentrations of fibrinogen in exposed rats (42).

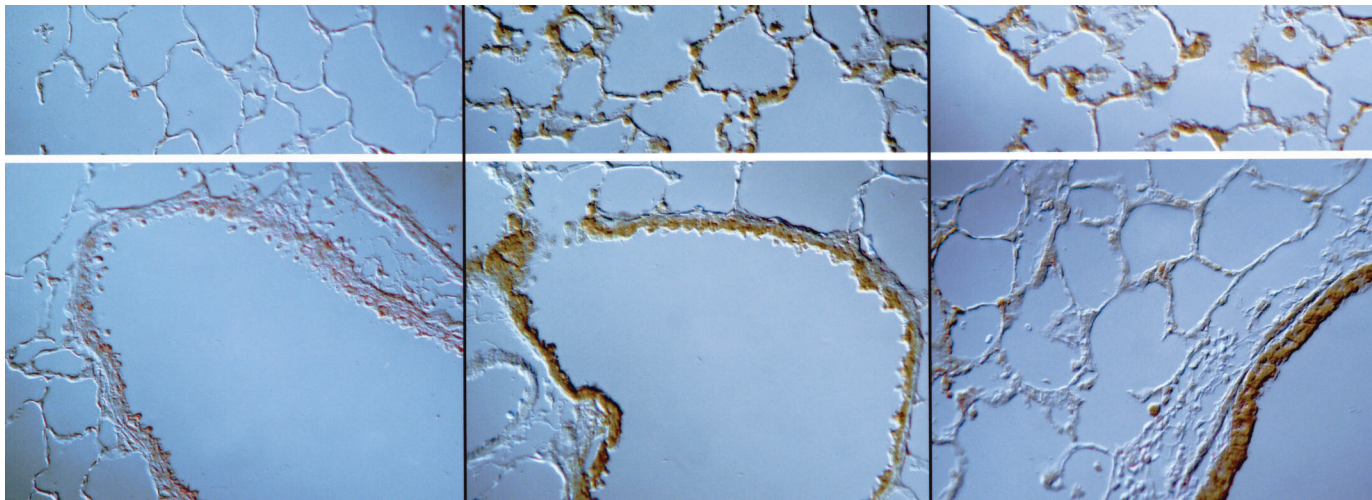
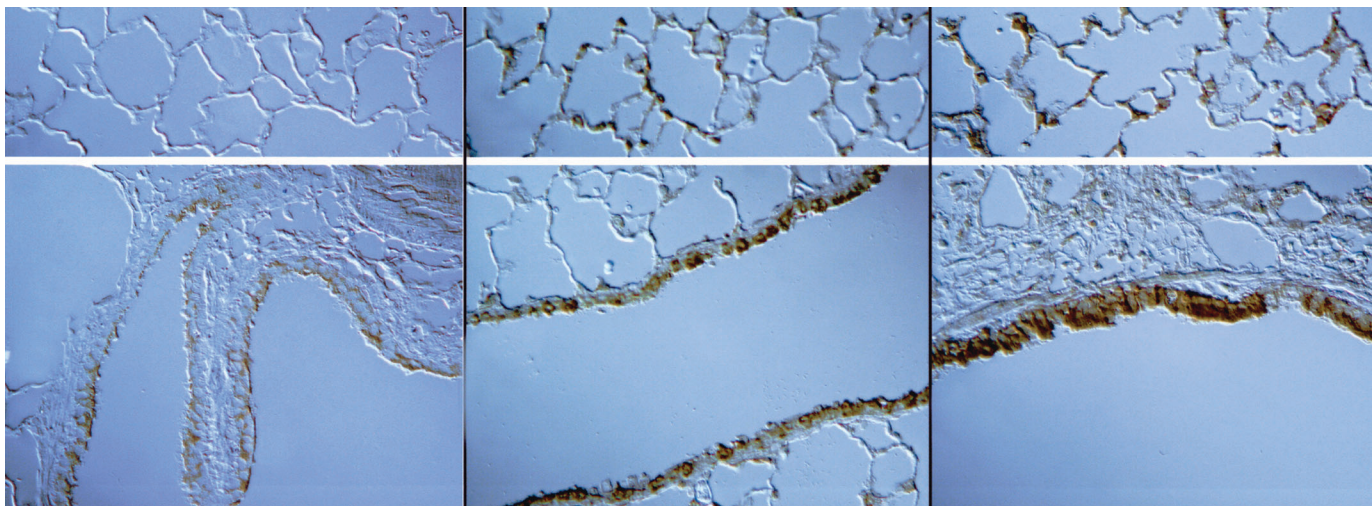
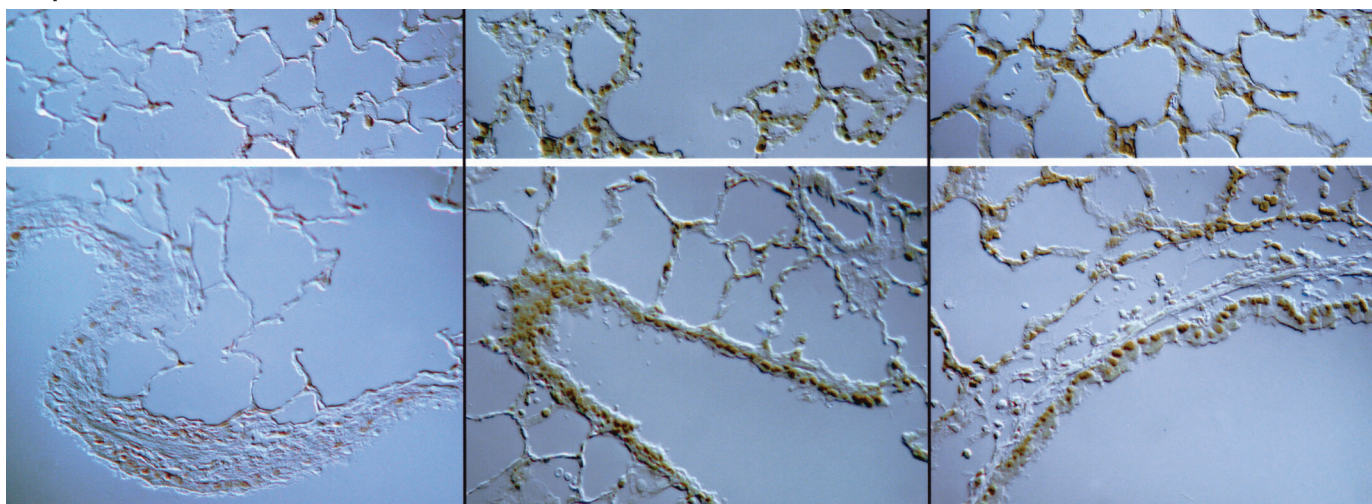
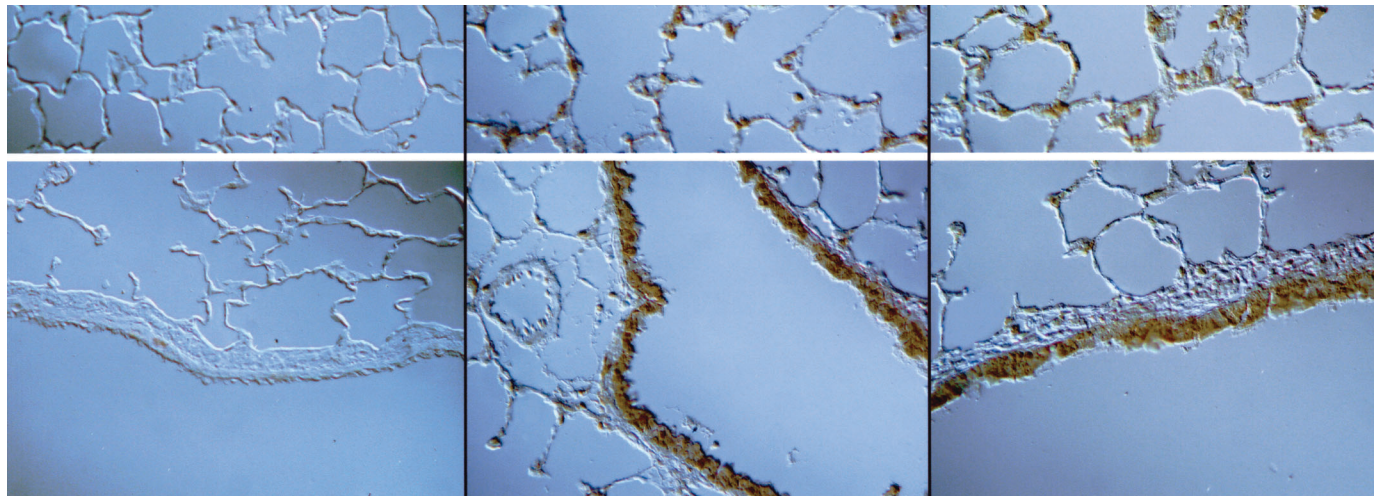
Phospho-CREB**NFκB(p65)****Phospho-ATF-2**

Figure 4. Transcription factor activation in lung tissue following instillation of ROFA. Male Sprague-Dawley rats were intratracheally instilled with 0.5 mL saline alone (left panels) or saline containing 0.5 mg ROFA for 4 hr (middle panel) or 24 hr (right panel). Lungs were formalin-fixed, paraffin-embedded, sectioned, and immunostained using anti-P65, anti-phospho-CREB, anti-phospho-ATF-2 or anti-phospho-c-Jun antibodies. Four hr after the treatment, pronounced immunostaining for all transcription factors is seen along the airway epithelium and parenchymal (insets) tissue is evident. Consistent with the mechanism of activation, P65 and P-ATF-2 staining appear to be nuclear and perinuclear. (*Continued on next page*)

Phospho-c-Jun**Figure 4.** Continued.**Human Injury after Exposure to Residual Oil Fly Ash**

Relative to animal models, considerably less is known about the effects of injury in humans after exposure to ROFA. Lung injury after human exposure to oil fly ash has occurred predominantly after occupational exposures of workers engaged in the maintenance of oil-fired boilers in power generating stations (43–49). The clinical presentation of these workers has been termed “boilermakers’ bronchitis” or “vanadium bronchitis.” Individuals exposed to high concentrations of ash provide a history of eye irritation, sore throat, hoarseness, cough, dyspnea, wheezing, and, infrequently, symptoms consistent with pneumonitis. Physical examination reveals rhinitis, conjunctivitis, and wheezing. Within 24 hr of exposure to ROFA, dose-dependent decreases in indices of pulmonary function have been observed, including diminished forced vital capacity, forced expiratory volume in 1 sec, and forced expiratory flows (48,49). Bronchoscopic examination shows a bronchitis with erythema and discharge in ROFA-exposed individuals. Symptoms and signs subside, and pulmonary function decrements can resolve, within a few days or weeks of cessation of the exposure (47).

As a result of the comparable clinical presentations, physiology, and pathology of injury after ROFA and vanadium exposures, it has been suggested that this metal is a major component responsible for toxicity of this air pollution particle in humans. Vanadium pentoxide (V_2O_5) is widely used as a catalyst for a variety of reactions and in the production of high-strength steel alloys (50). The first report of a human exposure to vanadium was in 1911 (50). “Vanadiumism” was defined as a

chronic intoxication with the principal evidence of toxicity observed in the lungs, kidneys, and gastrointestinal tract (50). Exposures occur during the mining, separation, and use of V_2O_5 in the steel and chemical industries. Exposure occurs mostly via inhalation, and vanadium is excreted in the urine, with a smaller amount in the feces. Vanadium dust causes symptoms of respiratory tract irritation with conjunctivitis, sneezing, rhinorrhea, sore throat, and chest tightness (50–52). The cough is prominent and characteristically dry and paroxysmal (50). Examination of vanadium-exposed individuals reveals a greenish discoloration of the tongue, wheezing, rhonchi, and rales (51,52). An increase in the inflammatory cells in nasal smears and biopsies from the nasal mucosa accompanies symptoms of respiratory tract irritation. There can be concurrent changes in pulmonary function indices associated with vanadium exposure (51,52). Vanadium workers are more susceptible to tuberculosis and can rapidly succumb to this disease (50). At high exposure levels, the lungs become highly congested and show a marked destruction of the alveolar epithelium (50). At high vanadium exposures, hemorrhages are frequent and severe, even causing death (51,52). Workers who died from vanadium exposure showed congested lungs with destruction of the alveolar epithelium (51,52).

Relevance to Injury after Ambient Particulate Matter

At the cellular level and in animal models, a majority of the investigation supports the postulate that transition metals found in ROFA (especially vanadium) participate in Fenton-like chemical reactions to produce reactive species. This is associated with

tyrosine phosphorylation, intracellular signaling leading to NF κ B translocation and activation of other transcription factors, induction of inflammatory mediator expression, and inflammatory lung injury. Cardiac and systemic effects result from a dissemination of components of ROFA to extrapulmonary tissues, reflexes, or hypoxemia. It is also evident that vanadium in ROFA accounts for the greatest portion of this effect. Vanadium as a contributor to the toxicity of air pollution particles may be specific to ROFA. In support of a potential role of vanadium in the biologic effect of ambient air PM, epidemiologic studies have shown a correlation between vanadium levels in the air and the incidence of mortality from bronchitis and pneumonia in British cities (53). However, an extrapolation of the body of investigation on ROFA to the health effects of ambient air PM is complicated by the fact that ambient air PM collected from numerous environments has very small amounts of vanadium. Despite this limitation, data continue to accumulate, suggesting that ambient air and other emission source particles follow a comparable mechanism of action as ROFA, involving phosphorylation reactions (54), transcription factor activation (54), mediator release (55), and inflammatory injury (56).

REFERENCES AND NOTES

1. Samet JM, Dominici F, Currier FC, Coursac I, Zeger SL. Fine particulate air pollution and mortality in 20 U.S. cities, 1987–1994. *N Engl J Med* 343:1742–1749 (2000).
2. Dockery DW, Pope CA, Xu X, Spengler JD, Ware JH, Fay ME, Ferris BG Jr, Speizer FE. An association between air pollution and mortality in six U.S. cities. *N Engl J Med* 329:1753–1759 (1993).
3. Costa DL, Dreher KL. Bioavailable transition metals in particulate matter mediate cardiopulmonary injury in healthy and compromised animal models. *Environ Health Perspect* 105 (suppl 5):1053–1060 (1997).

4. Fisher GL, McNeill KL, Prentice BA, McFarland AR. Physical and biological studies of coal and oil fly ash. *Environ Health Perspect* 51:181–186 (1983).
5. U.S. Environmental Protection Agency. National Air Pollutant Emission Trends, 1990–1992. EPA-454/R-93-032. Research Triangle Park, NC:U.S. Environmental Protection Agency, 1993.
6. Schroeder WH, Dobson M, Kane DM, Johnson ND. Toxic trace elements associated with airborne particulate matter: a review. *J Air Pollut Control Assoc* 37:1267–1285 (1987).
7. Zelikoff JT, Cohen MD. Immunotoxicology of inorganic metal compounds. In: *Experimental Immunotoxicology* (Smialowicz RJ, Holsapple MP, ed). New York: CRC Press, 1996:189–228.
8. Byrne AR, Kosta L. Vanadium in foods and in human body fluids and tissues. *Sci Total Environ* 10:17–30 (1978).
9. Pritchard RJ, Ghio AJ, Lehmann JR, Winsett DW, Tepper JS, Park P, Gilmour MI, Dreher KL, Costa DL. Oxidant generation and lung injury after particulate air pollution exposure increase with the concentrations of associated metals. *Inhal Toxicol* 8:457–477 (1996).
10. Ghio AJ, Samet JM. Metals and air pollution particles. In: *Air Pollutants and Effects on Health* (Holgate ST, Koren HS, Samet JM, Maynard R, eds). London: Academic Press, 1999:635–651.
11. Stringer B, Kobzik L. Environmental particulate-mediated cytokine production in lung epithelial cells (A549): role of preexisting inflammation and oxidant stress. *J Toxicol Environ Health* 55:31–44 (1998).
12. Jiang N, Dreher KL, Dye JA, Li Y, Richards JH, Martin LD, Adler KB. Residual oil fly ash induces cytotoxicity and mucin secretion by guinea pig tracheal epithelial cells via an oxidant-mediated mechanism. *Toxicol Appl Pharmacol* 163:221–230 (2000).
13. Dye JA, Adler KB, Richards JH, Dreher KL. Epithelial injury induced by exposure to residual oil fly-ash particles: role of reactive oxygen species? *Am J Respir Cell Mol Biol* 17:625–633 (1997).
14. Dye JA, Adler KB, Richards JH, Dreher KL. Role of soluble metals in oil fly ash-induced airway epithelial injury and cytokine gene expression. *Am J Physiol* 277:L498–L510 (1999).
15. Samet JM, Stonehuerner J, Reed W, Devlin RB, Dailey LA, Kennedy TP, Ghio AJ. Disruption of protein tyrosine phosphate homeostasis in bronchial epithelial cells exposed to oil fly ash. *Am J Physiol* 272:L426–L432 (1997).
16. Quay JL, Reed W, Samet J, Devlin RB. Air pollution particles induce IL-6 gene expression in human airway epithelial cells via NF- κ B activation. *Am J Respir Cell Mol Biol* 19:98–106 (1998).
17. Carter JD, Ghio AJ, Samet JM, Devlin RB. Cytokine production by human airway epithelial cells after exposure to an air pollution particle is metal-dependent. *Toxicol Appl Pharmacol* 146: 180–188 (1997).
18. Samet JM, Ghio AJ, Madden MC. Increased expression of cyclooxygenase 2 mediates oil fly ash-induced lung injury. *Exp Lung Res* 26:57–69 (2000).
19. Ghio AJ, Meng ZH, Hatch GE, Costa DL. Luminol-enhanced chemiluminescence after *in vitro* exposure of rat alveolar macrophages to oil fly ash is metal dependent. *Inhal Toxicol* 9:255–271 (1997).
20. Goldsmith CA, Frevert C, Imrich A, Sioutas C, Kobzik L. Alveolar macrophage interaction with air pollution particulates. *Environ Health Perspect* 105(suppl 5): 1191–1195 (1997).
21. Goldsmith CA, Imrich A, Danaee H, Ning YY, Kobzik L. Analysis of air pollution particulate-mediated oxidant stress in alveolar macrophages. *J Toxicol Environ Health* 54:529–545 (1998).
22. Grabowski GM, Paulauskis JD, Godleski JJ. Mediating phosphorylation events in the vanadium-induced respiratory burst of alveolar macrophages. *Toxicol Appl Pharmacol* 156:170–178 (1999).
23. Becker S, Soukup JM, Gilmour MI, Devlin RB. Stimulation of human and rat alveolar macrophages by urban air particulates: effects on oxidant radical generation and cytokine production. *Toxicol Appl Pharmacol* 141: 637–648 (1996).
24. Kadiiska MB, Mason RP, Dreher KL, Costa DL, Ghio AJ. *In vivo* evidence of free radical formation in the rat lung after exposure to an emission source air pollution particle. *Chem Res Toxicol* 10:1104–1108 (1997).
25. Silbajoris R, Ghio AJ, Samet JM, Jaskot R, Dreher KL, Brighton LE. *In vivo* and *in vitro* correlation of pulmonary MAP kinase activation following metallic exposure. *Inhal Toxicol* 12:453–468 (2000).
26. Su W-Y, Kodavanti UP, Jaskot RH, Costa DL, Dreher KL. Temporal expression and cellular distribution of pulmonary fibronectin and gene induction following exposure to an emission source particle. *J Environ Pathol, Toxicol Oncol* 14:215–225 (1995).
27. Dreher KL, Jaskot RH, Lehmann JR, Richards JH, McGee JK, Ghio AJ, Costa DL. Soluble transition metals mediate residual oil fly ash induced acute lung injury. *J Toxicol Environ Health* 50: 285–305 (1997).
28. Costa DL, Lehmann JR, Jaskot R, Winsett DW, Richards J, Dreher KL. Pulmonary toxicity of residual oil fly ash in the rat: inhalation versus intratracheal instillation. *Toxicol Sci* 42:404 (1998).
29. Kodavanti UP, Hauser R, Christiani DC, Meng ZH, McGee J, Ledbetter A, Richards J, Costa DL. Pulmonary responses to oil fly ash particles in the rat differ by virtue of their specific soluble metals. *Toxicol Sci* 43:204–212 (1998).
30. Watkinson WP, Campen MJ, Costa DL. Cardiac arrhythmia induction after exposure to residual oil fly ash particles in a rodent model of pulmonary hypertension. *Toxicol Sci* 41:209–216 (1998).
31. Dreher K, Jaskot R, Kodavanti U, Lehmann J, Winsett D, Costa D. Soluble transition metals mediate the acute pulmonary injury and airway hyperreactivity induced by residual oil fly ash particles. *Chest* 109(suppl 3):33s–34s (1996).
32. Kodavanti UP, Schladweiler MC, Ledbetter AD, Watkinson WP, Campen MJ, Winsett DW, Richards JR, Crissman KM, Hatch GE, Costa DL. The spontaneously hypertensive rat as a model of human cardiovascular disease: evidence of exacerbated cardiopulmonary injury and oxidative stress from inhaled emission particulate matter. *Toxicol Appl Pharmacol* 14:250–263 (2000).
33. Kodavanti UP, Jackson MC, Ledbetter AD, Richards JR, Gardner SY, Watkinson WP, Campen MJ, Costa DL. Lung injury from intratracheal and inhalation exposures to residual oil fly ash in a rat model of monocrotaline-induced pulmonary hypertension. *J Toxicol Environ Health* 57:543–563 (1999).
34. Knecht EA, Moorman WJ, Clark JC, Lynch DW, Lewis TR. Pulmonary effects of acute vanadium pentoxide inhalation in monkeys. *Am Rev Respir Dis* 132:1181–1185 (1985).
35. Knecht EA, Moorman WJ, Clark JC, Hull RD, Biagini RE, Lynch DW, Boyle TJ, Simon SD. Pulmonary reactivity to vanadium pentoxide following subchronic inhalation exposure in a non-human primate animal model. *J Appl Toxicol* 12:427–434 (1992).
36. Gavett SH, Madison SL, Dreher KL, Winsett DW, McGee JK, Costa DL. Metal and sulfate composition of residual oil fly ash determines airway hyperreactivity and lung injury in rats. *Environ Res* 72:162–172 (1997).
37. Gavett SH, Madison SL, Stevens MA, Costa DL. Residual oil fly ash amplifies allergic cytokines, airway responsiveness, and inflammation in mice. *Am J Respir Crit Care Med* 160:1897–1904 (1999).
38. Hamada K, Goldsmith CA, Kobzik L. Increased airway hyperresponsiveness and inflammation in a juvenile mouse model of asthma exposed to air-pollutant aerosol. *J Toxicol Environ Health* 58:129–143 (1999).
39. Lambert AL, Dong W, Winsett DW, Selgrade MK, Gilmour MI. Residual oil fly ash exposure enhances allergic sensitization to house dust mite. *Toxicol Appl Pharmacol* 158:269–277 (1999).
40. Lambert AL, Dong W, Selgrade MK, Gilmour MI. Enhanced allergic sensitization by residual oil fly ash particles is mediated by soluble metal constituents. *Toxicol Appl Pharmacol* 165:84–93 (2000).
41. Hamada K, Goldsmith CA, Kobzik L. Increased airway hyperresponsiveness and inflammation in a juvenile mouse model of asthma exposed to air-pollutant aerosol. *J Toxicol Environ Health* 58:129–143 (1999).
42. Gardner SY, Lehmann JR, Costa DL. Oil fly ash-induced elevation of plasma fibrinogen levels in rats. *Toxicol Sci* 56:175–180 (2000).
43. Wyers H. Some toxic effects of vanadium pentoxide. *Br J Ind Med* 3:177–182 (1946).
44. Williams N. Vanadium poisoning from cleaning oil-fired boilers. *Br J Ind Med* 9:50–55 (1952).
45. Browne RC. Vanadium poisoning from gas turbines. *Br J Ind Med* 12:57–59 (1955).
46. Sjoberg S-G. Vanadium bronchitis from cleaning oil-fired boilers. *AMA Arch Ind Health* 11:505–512 (1955).
47. Lees REM. Changes in lung function after exposure to vanadium compounds in fuel-oil ash. *Br J Ind Med* 37:253–256 (1980).
48. Hauser R, Elreedy S, Hoppin J, Christiani DC. Airway obstruction in boiler-makers exposed to fuel-oil ash. A prospective investigation. *Am J Respir Crit Care Med* 152:1478–1484 (1995).
49. Hauser R, Daskalakis C, Christiani DC. A regression approach to the analysis of serial peak flow among fuel oil ash exposed workers. *Am J Respir Crit Care Med* 154:974–980 (1996).
50. Dutton WF. Vanadiumism. *JAMA* 1:1648–1652 (1911).
51. Kiviluoto M, Rasanen O, Rinne A, Rissanen M. Effects of vanadium on the upper respiratory tract of workers in a vanadium factory. *Scand J Work Environ Health* 5:50–58 (1979).
52. Kiviluoto M. Observations on the lungs of vanadium workers. *Br J Ind Med* 37:363–366 (1980).
53. Stocks P. On the relation between atmospheric pollution in urban and rural localities and mortality from cancer, bronchitis and pneumonia with particular reference to 3:4 benzopyrene, beryllium, molybdenum, vanadium and arsenic. *Br J Cancer* 14:397–418 (1960).
54. Shukla A, Timblin C, BeruBe K, Gordon T, McKinney W, Driscoll K, Vacek P, Mossman BT. Inhaled particulate matter causes expression of nuclear factor (NF)- κ B-related genes and oxidant-dependent NF- κ B activation *in vitro*. *Am J Respir Cell Mol Biol* 23:182–187 (2000).
55. Salvi SS, Nordenhall C, Blomberg A, Rudell B, Pourazar J, Kelly FJ, Wilson S, Sandstrom T, Holgate ST, Frew AJ. Acute exposure to diesel exhaust increases IL-8 and GRO- α production in healthy human airways. *Am J Respir Crit Care Med* 161:550–557 (2000).
56. Ghio AJ, Kim C, Devlin RB. Concentrated ambient particles induce a neutrophilic lung inflammation in healthy volunteers. *Am J Respir Crit Care Med* 162:981–998 (2000).