

Transient promoter formation: a new feedback mechanism for regulation of IS911 transposition

Guy Duval-Valentin, Christophe Normand, Vanessa Khemici, Brigitte Marty and Michael Chandler¹

Laboratoire de Microbiologie et Génétique Moléculaire, CNRS, 118 Route de Narbonne, 31062 Toulouse, France

¹Corresponding author
e-mail: mike@ibcg.biotoul.fr

IS911 transposition involves a free circular transposon intermediate where the terminal inverted repeat sequences are connected. Transposase synthesis is usually driven by a weak promoter, p_{IRL} , in the left end (IRL). Circle junction formation creates a strong promoter, p_{junc} , with a –35 sequence located in the right end and the –10 sequence in the left. p_{junc} assembly would permit an increase in synthesis of transposase from the transposon circle, which would be expected to stimulate integration. Insertion results in p_{junc} disassembly and a return to the low p_{IRL} -driven transposase levels. We demonstrate that p_{junc} plays an important role in regulating IS911 transposition. Inactivation of p_{junc} strongly decreased IS911 transposition when transposase was produced in its natural configuration. This novel feedback mechanism permits transient and controlled activation of integration only in the presence of the correct (circular) intermediate. We have also investigated other members of the IS3 and other IS families. Several, but not all, IS3 family members possess p_{junc} equivalents, underlining that the regulatory mechanisms adopted to fine-tune transposition may be different.

Keywords: IS911/promoter/regulation/transposase/transposition

Introduction

Extensive analysis of a number of transposable elements has revealed that they have adopted a variety of different strategies to control their displacement. Even elements that use related transposases (Tpase) carrying a conserved triad of amino acids (the DDE motif; Fayet *et al.*, 1990; Rowland and Dyke, 1990; Kulkosky *et al.*, 1992; Rezsóhazy *et al.*, 1993) as part of their active site, and which therefore presumably share identical chemistry, show a wide diversity in the details of their transposition cycle (Mizuuchi, 1992; Haren *et al.*, 1999). DDE Tases catalyse the cleavage of a single DNA strand to generate a 3'-OH at the transposon end. This then acts as a nucleophile in the attack of the target DNA backbone. The major defining difference between the elements encoding such Tases is the way in which they deal with the second strand (see Turlan and Chandler, 2000).

In one major strategy adopted by IS911 and other members of the IS3 family [IS911 (Ton-Hoang *et al.*, 1997), IS3 (Sekine *et al.*, 1994), IS2 (Lewis and Grindley, 1997) and IS150 (Welz, 1993)], a single-strand cleavage occurs initially at one end of the insertion sequence (IS). The free 3'-OH generated is then directed to attack the opposite end on the same DNA strand to generate a figure-of-eight form in which both ends are joined by a single-strand bridge (Polard and Chandler, 1995a). This is converted into a transposon circle (Polard and Chandler, 1995a; G.Duval-Valentin, unpublished results), which then undergoes the final step of integration. The transposon circle carries abutted left and right ends (IRL and IRR). Since such junctions have been observed for several ISs, including IS21 (Reimann *et al.*, 1989; Berger and Haas, 2001), IS30 (Olasz *et al.*, 1993), IS256 (Lyon *et al.*, 1987; M.Prudhomme, C.Turlan, J.-P. Claverys and M.Chandler, submitted) and ISL3 (Kallastu *et al.*, 1998), members of these families may also transpose using a similar mechanism. In all cases IRL and IRR are separated by a short spacer whose length is a characteristic of the particular IS. These structures are several orders of magnitude more active as substrates in transposition than are plasmid donor molecules in which the two ends are distant (i.e. in their normal configuration). Transposition of these elements is thus also likely to pass through a circularization step.

In the case of IS3 family members, the transposition reactions are catalysed by two proteins, OrfAB and OrfA. The Tpase, OrfAB, is produced as a fusion protein by translational frameshifting between two consecutive and partially overlapping reading frames, *orfA* and *orfB*. OrfA, is the product of the upstream frame, *orfA*. OrfAB alone is capable of generating the bridged figure-of-eight form while both proteins are required for the reactions at the IRL–IRR junction leading to efficient insertion of the transposon circle (Ton-Hoang *et al.*, 1997).

In addition to their inherently high recombination activity, the IRR–IRL junctions of several of these IS elements have been shown to constitute relatively strong promoters (p_{junc}) positioned to direct expression of the Tpase. The –35 element is located in IRR while the –10 hexamer is located in IRL (Ton-Hoang *et al.*, 1997). This is illustrated for IS911 in Figure 1. The assembly of p_{junc} has led to the notion of a novel regulatory circuit where the indigenous promoter, p_{IRL} , maintains low levels of Tpase synthesis sufficient to generate low levels of figure-of-eight junctions. Processing these forms into transposon circles assembles the p_{junc} promoter leading to extensive expression of IS-encoded proteins, efficient Tpase-catalysed single-strand cleavage at each end and insertion into a target site. Insertion then separates the two promoter elements and again renders Tpase expression dependent on p_{IRL} . This novel feedback model is illustrated in Figure 1.

In the work described here we have addressed the role of p_{junc} in IS911 transposition. We have demonstrated that an IS911 derivative carrying a native p_{junc} junction promoter capable of driving T_{psase} expression *in cis* shows significantly higher transposition activity than a derivative in which p_{junc} has been inactivated. This difference is not observed if T_{psase} is provided *in trans* independently of IS911. Since p_{junc} activity could be modulated by binding of IS911 transposition proteins, we have also analysed the effect of IS911-encoded proteins on expression from p_{junc} . We find that neither OrfA nor OrfAB is capable of repressing expression from p_{junc} . In contrast, an artificial OrfAB derivative, OrfAB[1–149], truncated at its C-terminal end and previously demonstrated to strongly bind isolated IRR and IRL sequences (Haren *et al.*, 1998, 2000; Normand *et al.*, 2001) is able to repress p_{junc} . Interestingly, while our results demonstrate that junction sequences of the IS3 family members IS911, IS2 and IS600 include a strong promoter, not all members of this family appear to share this property. Thus even though these elements form part of a highly homogenous family, the result underlines the diversity in strategies adopted by individual elements to fine-tune their transposition activities.

Results

Inactivation of IS911 p_{junc} by directed mutagenesis

To determine the role of p_{junc} in regulating IS911 transposition, the putative –10 hexamer (CACACT) located in IRL (Figures 1 and 2A) was subjected to directed mutagenesis in order to reduce or eliminate p_{junc} activity. We chose to introduce transversions at the most conserved bases in the canonical sequence TATAAT. Five single point mutants were generated (Figure 2B) at positions that are not conserved in IRR. The mutant IRL ends were substituted for the wild-type end in an IS911 derivative carrying a *lacZ* reporter gene (pCN100; Normand *et al.*, 2001). Promoter activity was measured after transposon circle formation in the presence of OrfAB (Materials and methods) using a standard β -galactosidase assay. Three of the mutations exhibited only a slight reduction in activity compared with the wild-type promoter (mutants 2, 3 and 6; see Figure 2), while three others showed significantly lower activities (17%, mutant 1, CACACG; 14%, mutant 4, CCCACT; and 30%, mutant 5, GACACT) compared with the wild-type p_{junc} . In an attempt to further reduce activity, all three mutations were introduced into a single –10 hexamer. The resulting triple mutant (IRL_{1,4,5}) exhibited a residual activity of ~3% compared with the wild-type p_{junc} promoter. This residual expression is presumably due to the presence of the weak p_{IRL} promoter in IRL in these plasmid constructs (Figure 2A), which has previously been shown to have an activity of ~2–3% that of p_{junc} (Ton-Hoang *et al.*, 1997).

Effect of the mutations on the inherent recombination activity of IRL

Since the mutations introduced into p_{junc} lie within IRL, it is possible that they directly affect the inherent transposition activity in addition to their effect on promoter activity. Although no obvious difference in the global amounts of transposon circles produced by the different

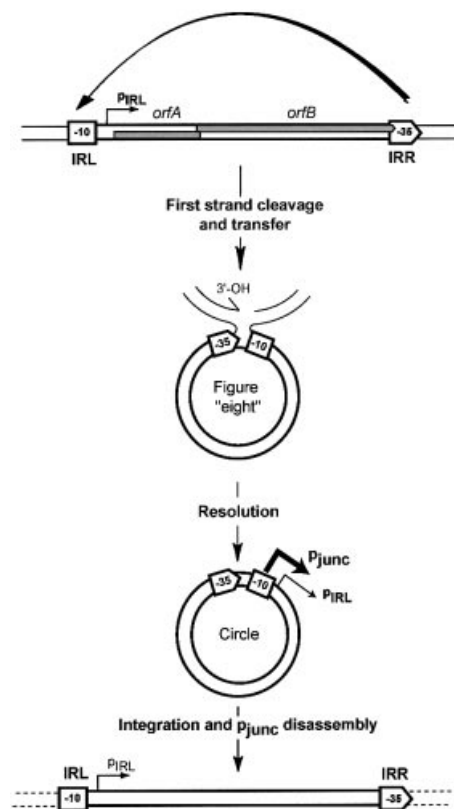


Fig. 1. IS911 circle formation. IS911 is shown in the top part of the figure together with its two overlapping reading frames, *orfA* and *orfB* (shaded boxes). The left and right terminal inverted repeats, IRL and IRR, are shown as a square and pointed box, respectively. The component –10 and –35 promoter elements of p_{junc} within these ends are also shown together with the weak p_{IRL} promoter and the direction of transcription. In a first step, single-strand cleavage and transfer from one IR to the other is catalysed by OrfAB produced from the weak p_{IRL} promoter. This is indicated at the top of the figure by the curved arrow. In this case, the right end (IRR) is shown attacking the left end (IRL). The resulting figure-of-eight form is drawn below and shows the free 3'-OH group generated on the flanking donor DNA sequence. In a second step, second-strand circularization occurs by an as yet undetermined mechanism involving host functions, but independent of transposon proteins (Turlan and Chandler, 2000). The resulting IRR–IRL junction carries suitably placed –35 and –10 hexamers, separated by the canonical 17 bp spacer and form a strong p_{junc} (bold arrow) promoter able to promote high levels of production of IS911 proteins. Integration of the circle results in disassembly of the promoter restoring low levels of expression from p_{IRL} .

mutants could be detected (data not shown), it was possible that they exerted more subtle effects. To examine this, the possible direct effect on transposition activity was determined in detail for several steps in the transposition cycle. These included the efficiency of production of transposition intermediates (figure-of-eight and transposon circles), circle junction integration and the overall transposition activity when transposition enzymes were supplied *in trans* to the mutated ends.

Kinetics of figure-of-eight formation *in vitro*. To test their possible effect on the presumed first step of the transposition cycle, figure-of-eight formation of an artificial transposon carrying the mutant IRL_{1,4,5} and a correctly

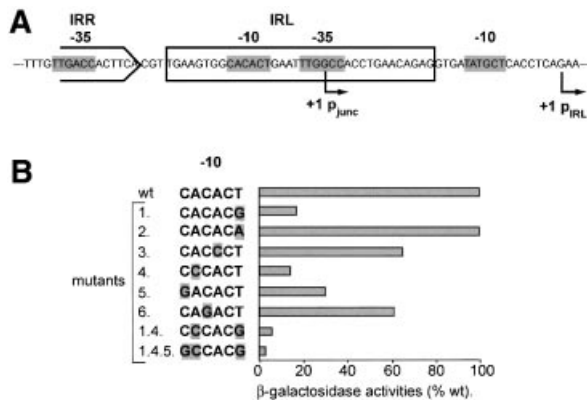


Fig. 2. The p_{IRL} and p_{junc} promoters. (A) Representation of p_{IRL} and p_{junc} promoters in the *IS911* circle junction. Arrows show the position of transcription initiation sites. Potential -35 and -10 consensus sequences are boxed in grey. (B) Inactivation of p_{junc} by directed mutagenesis. This was performed on the -10 hexamer of the promoter and the effect was assessed directly on the *lacZ* reporter gene located downstream. Circles were formed *in vivo* and the effect of single mutations were tested by β -galactosidase activities. Mutant bases are shown with a grey background. Triple mutant 1.4.5 was selected for use in all following experiments. Note that p_{IRL} represents a background of ~ 2 – 3% compared with the active junction in the presence of the fully active p_{junc} , and probably represent the residual activity of mutant 1.4.5.

orientated wild-type IRR sequence was measured *in vitro*. In this system, which is dependent on OrfAB alone, the recombination reaction does not lead to transposon circles but is arrested after figure-of-eight formation. Plasmids pAPT56.2 (carrying wild-type IRR and IRL sequences) and pDV27 (carrying a wild-type IRR and IRL_{1.4.5}) (Figure 3A) were used in a standard *in vitro* reaction (Materials and methods) in the presence of Mg^{2+} . Samples were removed at intervals, digested with *EcoRV*, to convert the figure-of-eight into a χ form, and analysed by electrophoresis through a 0.8% agarose gel. This allows separation of the figure-of-eight from the parent plasmid (Materials and methods; Polard and Chandler, 1995b). Figure 3B shows a SyBr green-stained gel. Quantification of the bands by fluorimetry showed that both mutant and wild-type ends display indistinguishable activities in figure-of-eight formation (Figure 3C).

Figure-of-eight and transposon circle formation *in vivo*. Recombination activity of IRL_{1.4.5} was also examined *in vivo* by determining the level of transposition intermediates (figure-of-eight and transposon circle molecules) produced under standard growth conditions. In these experiments two *IS911* derivatives carried by pDV19 and pDV28 were used (Figure 4A). These plasmids carry the terminal 52 bp of the wild-type (pDV19) or mutated left end (pDV28) together with a wild-type right end flanking an *orfA-lacZ* translational fusion. OrfAB was provided *in trans* under control of the p_{lacUV5} promoter from a second compatible plasmid, pAPT111. The plasmid content of cultures grown in increasing levels of IPTG (to induce OrfAB synthesis; Materials and methods) was analysed by agarose gel electrophoresis following digestion with *XhoI* to convert the figure-of-eight into an α form and to linearize the transposon circle (Figure 4A). No significant difference in levels of transposition intermediates could be detected

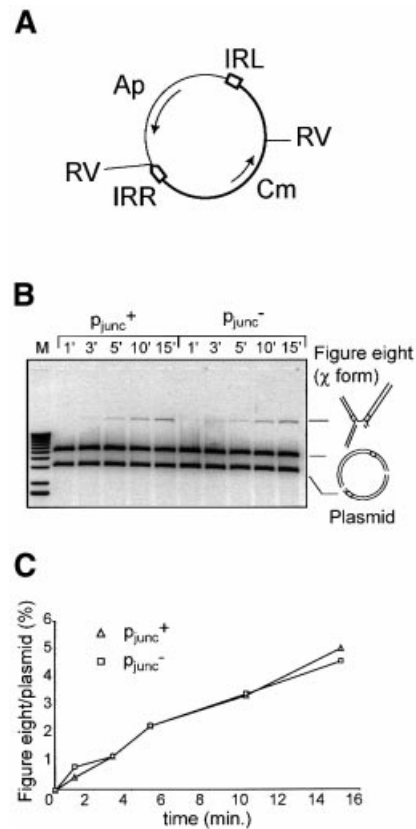


Fig. 3. Kinetics of figure-of-eight formation *in vitro*. (A) Plasmid substrates. Two plasmids, pAPT56.2 and pDV27 containing, respectively, IRL_{wt} (p_{junc}^+) and IRL_{1.4.5} (p_{junc}^-) were used. The general structure of these plasmids is shown. The position of *EcoRV* restriction sites used in subsequent analysis is indicated (RV) as are the positions and direction of transcription of the chloramphenicol (Cm) and ampicillin (Ap) resistance genes. The transposable element is drawn in bold. The left and right inverted repeats (IRL, IRR) are indicated. (B) Results of incubation of plasmid DNA with OrfAB *in vitro* as a function of time. Intermediates were separated on a 0.8% agarose gel after *EcoRV* digestion. Incubation periods in minutes are indicated on the top of the gel. The χ form derived from figure-of-eight molecules and the two fragments derived from the parental plasmid are indicated. (C) Quantification of figure-of-eight levels by fluorimetry after staining with Sybr green I.

between *IS911* derivatives carrying the wild-type (pDV19) or triple mutant (pDV28) ends (Figure 4B and C).

Circle junction integration activity *in vivo*. Although the IRL_{1.4.5} mutant had no measurable effect on the production of figure-of-eight intermediates and transposon circles, it was possible that it affects the final step in the transposition cycle: integration of the circle.

In a first set of experiments, the effect of the mutant end on insertion activity of the junction was determined. Transposon donor plasmids were constructed by cloning the IRR–IRL junction into a suitable plasmid backbone. Purified transposon circles carrying the wild-type or mutant IRR–IRL junctions derived from pCN100 (Normand *et al.*, 2001) and pDV11 respectively, were cloned into pAPT120 as described previously (Ton-Hoang *et al.*, 1997; see Materials and methods). *IS911* proteins were provided *in trans* under the control of a p_{lacUV5} promoter either from reading frames with a wild-type configuration in which OrfAB is produced by frameshift-

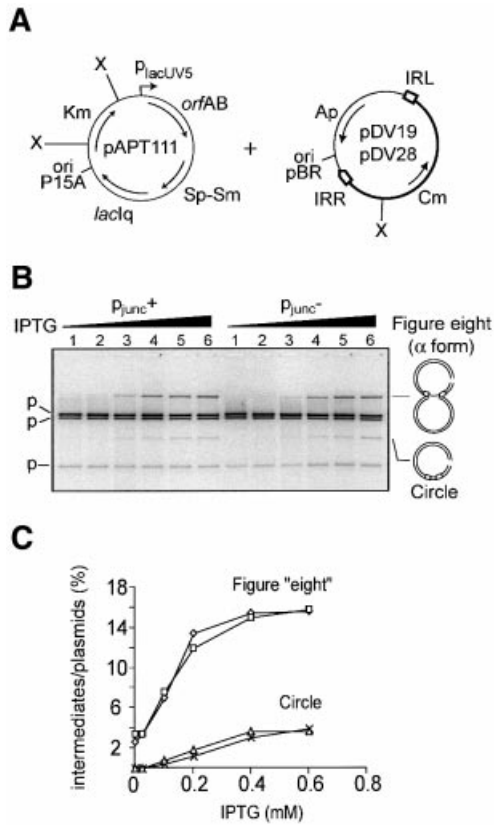


Fig. 4. Figure-of-eight and circle formation *in vivo* as a function of increasing concentrations of IPTG. **(A)** Relevant features of pAPT111, which was used to produce OrfAB under control of the P_{lacUV5} promoter *in trans* and of the synthetic oregon-carrying plasmids pDV19 (p_{junc}^+ with IRL_{wr}) and pDV28 (p_{junc}^- with IRL_{1.4.5}) are shown. Also indicated are: the position of the *XhoI* sites used in the analysis (X); the positions and direction of transcription of the transposase, *orfAB*, the spectinomycin-streptomycin (Sp-Sm), kanamycin (Km), chloramphenicol (Cm) and ampicillin (Ap) resistance genes and the *lac* repressor gene (*lacIq*) used to control P_{lacUV5} (which drives OrfAB expression); and the two compatible origins of replication (*ori* P15A and pBR322). The transposable element carried by pDV19 and pDV28 is drawn in bold. **(B)** DNA samples were prepared by the cleared lysate procedure and digested by *XhoI* to separate all intermediates and plasmids. Samples were separated by electrophoresis on a 0.8% TAE-agarose gel. Concentrations of IPTG added in lanes 1–6 were: 0, 0.025, 0.1, 0.2, 0.4 and 0.6 mM, respectively. **(C)** Detection and quantitation of figure-of-eight molecules and circles were performed by fluorimaging after Sybr green I staining.

ing (pAPT112, expressing the wild-type complement of IS911 proteins; Polard and Chandler, 1995b), or from a fused-frame derivative that produces OrfAB alone without frameshifting (pAPT111; Polard and Chandler, 1995b). The activity of the junctions was measured in a standard mating-out assay using pOX38Km as the conjugative target plasmid (Galas and Chandler, 1982; Chandler and Galas, 1983). The results are presented in Figure 5.

As found previously (Ton-Hoang *et al.*, 1997), integration using preformed IRR–IRL junctions occurred at a relatively low frequency in the presence of OrfAB alone, but was stimulated by a factor of 12–13 when a wild-type complement of proteins was used (Figure 5A). This was observed both for junctions composed of the wild-type or mutant ends and reflects a requirement for OrfA observed

Transposase substrates	Transposition functions in <i>trans</i> under P_{lacUV5}	Average of frequencies ($\cdot 10^{-7}$)		n
		P_{junc}^+	P_{junc}^-	
A 	OrfAB + OrfA	3120 (± 500)	1833 (± 370)	6
	OrfAB	240 (± 57)	149 (± 33)	6
B 	OrfAB + OrfA	5 (± 1.3)	3.7 (± 0.55)	6
	OrfAB	21 (± 6)	18.6 (± 4)	6

Fig. 5. Analysis of the effects of mutation on the integration step and overall transposition activity. **(A)** Integration frequencies using a preformed IRR–IRL junction. The general structure of the donor plasmids pDV13 (p_{junc}^+) and pDV23 (p_{junc}^-) is shown in the left hand column. **(B)** Overall transposition using a substrate with distant ends. The general structure of the donor plasmids pDV19 (p_{junc}^+) and pDV28 (p_{junc}^-) is shown in the left hand column. Symbols are those used in the legends to Figures 3 and 4. IS911 proteins were supplied in two different configurations: a wild-type configuration of the open reading frames in which the transposase was produced by translational frameshifting (OrfAB + OrfA) or with OrfAB alone. The values obtained represent the average of six distinct experiments ($n = 6$). Standard errors are shown in parentheses.

also in an *in vitro* integration reaction (Ton-Hoang *et al.*, 1998). In both cases, the mutant junction exhibited an integration efficiency of ~ 0.6 that of the wild-type junction. Thus the combination of the three mutations, which reduces promoter activity to at least 30-fold compared with the wild-type junction, has a < 2 -fold effect on integration activity.

Overall transposition activity *in vivo*. In the experiments described above, the two transposon ends were retained close together in a preformed junction structure. This configuration of ends is highly active but represents only the final step in the transposition cycle. In the preceding steps, IRL and IRR must be assembled into a paired end synaptic complex (catalysed by OrfAB alone; Haren *et al.*, 1998, 2000; Normand *et al.*, 2001), strand cleavage and transfer must take place and the resulting figure-of-eight molecules must be resolved into transposon circles carrying the junction. To determine whether the triple mutation in IRL affects these initial steps in the transposition cycle, an artificial IS911 derivative, including IRL_{1.4.5} at one end and a wild-type IRR at the other, was constructed in a plasmid donor and its behaviour in the mating-out assay was measured. The derivative used was composed of a chloramphenicol resistance gene (Cm^R) introduced between the wild-type IRL and IRR ends (pDV19) or between the triple mutant IRL_{1.4.5} and a wild-type IRR (pDV28). Again, IS911 proteins were supplied *in trans*. The results are presented in Figure 5B. No significant effect of the IRL mutations on transposition frequency was observed with either OrfAB alone or with the wild-type configuration of proteins.

Moreover, these results confirm previous findings (Ton-Hoang *et al.*, 1997) which showed that overall transposition frequencies are significantly lower than circle junction-mediated integration (~ 10 -fold with OrfAB and $5\text{--}6 \times 10^2$ -fold with a wild-type complement of proteins). This presumably reflects the fact that synapsis

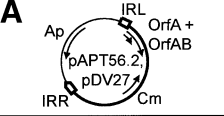
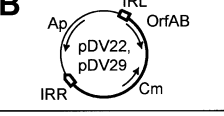
Transposase substrates	Average of frequencies ($\cdot 10^{-7}$)		n
	p_{junc}^+	p_{junc}^-	
A 	62 (± 4.2)	2.6 (± 0.9)	6
B 	5100 (± 900)	94 (± 28)	6

Fig. 6. Role of p_{junc} with *IS911* proteins supplied *in cis*. Transposition frequencies were analysed by mating-out. (A) Analysis performed with the wild-type configuration (OrfA + OrfAB) or (B) OrfAB alone. The values obtained represent the average of six distinct experiments ($n = 6$). Symbols are those used in the legends to Figures 3 and 4. Standard errors are shown in parentheses.

between IRR and IRL, figure-of-eight formation or resolution into transposon circles are limiting steps in *IS911* transposition relative to integration using the circle junction.

Effect of supplying *IS911* proteins *in cis* and the role of p_{junc}

If p_{junc} is indeed involved in regulating *IS911* transposition activity, it would be expected to exhibit its effects only when present *in cis*, i.e. where it would drive OrfA and OrfAB synthesis from the element whose transposition is being monitored. In order to determine whether this is the case, elements were constructed in which the natural configuration of *orfA* and *orfAB*, or a fused-frame configuration, was placed under control of p_{IRL} . In these derivatives a Cm^R gene was also included between the ends as a selectable marker. It was cloned downstream of *orfB* in such a way as not to disrupt the *orfB* frame, which normally continues into IRR (Polard *et al.*, 1994). Activity was measured using the mating-out assay.

The results obtained with a wild-type complement of proteins supplied *in cis* from the weak p_{IRL} promoter are presented in Figure 6A. Under these conditions, a mutant IRL_{1,4,5} end (pDV27) produced a marked effect on overall activity compared with the wild-type end (pAPT56.2). It resulted in an ~20-fold reduction in transposition frequency. This is in contrast to the results obtained when a similar configuration of transposition proteins were supplied *in trans* (Figure 5B). Thus, p_{junc} clearly provides a regulatory function in its natural context when driving expression of transposition proteins *in cis*.

To extend this analysis, the effect of p_{junc} -driven OrfAB alone rather than the wild-type protein complement was also measured. Previous attempts to introduce a mutation which fuses *orfA* and *orfB* into *IS911* have been unsuccessful (Polard *et al.*, 1992). Constitutive synthesis of OrfAB (i.e. without frameshifting) from its native promoter within the IS resulted in a high level of deletions and rearrangements in the vector plasmid. In order to facilitate construction of this type of *IS911* derivative, we exploited the observation that OrfAB is inactive at 42°C (Haren *et al.*, 1997). Bacterial hosts were therefore maintained at 42°C during the appropriate stages of plasmid construction and at all times preceding the mating-out assays. The

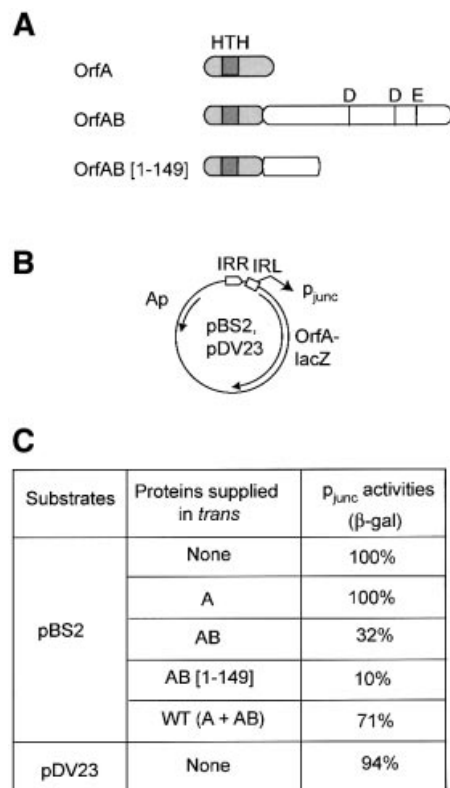


Fig. 7. Effect of *IS911*-encoded proteins on p_{junc} activity measured by β -galactosidase assays. (A) The proteins. Four protein configurations were tested: OrfA, OrfAB, a truncated derivative of OrfAB, OrfAB[1-149], deleted for the C-terminal catalytic domain and OrfA + OrfAB (wild-type configuration). The proteins are shown schematically illustrating the relative position of the catalytic DDE motif and of a helix–turn–helix motif potentially involved in DNA binding. The proteins were supplied *in trans* under control of p_{lacUV5} , from plasmids pAPT156 (OrfA), pAPT111 (OrfAB), pLH114 (OrfAB[1-149]), and pAPT112 (OrfA + OrfAB). pAPT110 was used as a control without *IS911* proteins. (B) The test plasmids. pBS2 carries mutations in the terminal dinucleotides at both ends in the IRR–IRL junction. pDV23 carries a wild-type IRR–IRL junction. Symbols are as described in Figures 3, 4 and 5. (C) β -galactosidase activities. The right hand column indicates β -galactosidase activities as a percentage relative to p_{junc} activity in the absence of any proteins *in trans* (100%). These results are the average of three independent experiments with a standard error of ~15%. pDV23 (active junction) was tested in the absence of proteins supplied *in trans* to ensure that the terminal dinucleotide mutations (5'-CA to 5'-AG) introduced to inactivate integration activity of the junction did not affect p_{junc} activity. 100% = 17 500 Miller units.

results of mating-out assays are presented in Figure 6B. They clearly show an effect of p_{junc} on transposition. Comparison of transposition frequencies obtained with the wild-type IRL (pDV22) and IRL_{1,4,5} (pDV29) showed a 54-fold decrease in the case of the mutant. This confirms that the transient p_{junc} promoter plays an important stimulatory role in the transposition cycle, which operates only in the presence of the correct (circular) intermediate.

It should be underlined that the *cis* effect of p_{junc} is to amplify Tase production. This is distinct from the *cis* preference observed for other ISs (see Mahillon and Chandler, 1998, for a review) as well as for *IS911* (Polard *et al.*, 1992), which implies that Tase acts preferentially on the element from which it is synthesized.

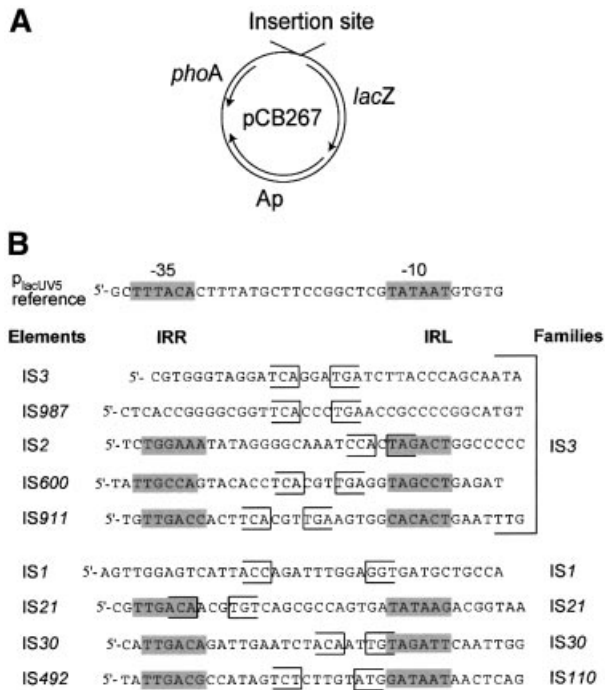


Fig. 8. Analysis of junctions of other IS elements. (A) The promoter-probe vector pCB267. Junctions were constructed using synthetic oligonucleotides which were cloned into this plasmid upstream of a promoterless β -galactosidase gene (*lacZ*). The plasmid also carries a promoterless *phoA* gene which was not used in these studies. (B) Junctions of different ISs used. Boundaries of IRR and IRL are shown as brackets and putative -35 or -10 boxes are boxed in grey when close to the canonical hexamers. Five families were represented (IS3, IS1, IS21, IS30, IS110) and nine different junctions including IS911 were cloned in front of the *lacZ* gene. The promoter used as reference in these experiments was P_{lacUV5} .

Effects of IS911 proteins on p_{junc} activity

Since IS911 transposase must bind to the IRR-IRL junction, it is possible that the transient activity of p_{junc} could be further modulated by these proteins. To determine whether OrfA or OrfAB might modify p_{junc} activity, their effect on p_{junc} -driven expression of a *lac* reporter gene was determined. The reporter plasmid was similar to pDV23 described above, but the wild-type IRR-IRL junction was replaced with a junction in which both terminal 5'-CA-3' dinucleotides were mutated to 5'-AG-3'. This modification inactivates the ends as donors in transposition and was introduced to prevent OrfAB-catalysed cleavage of the junction and therefore loss of p_{junc} (Ton-Hoang *et al.*, 1997). These mutations, localized in the p_{junc} spacer, have no effect on the activity of the promoter as previously shown (Ton-Hoang *et al.*, 1997) and confirmed here by β -galactosidase dosage (Figure 7). IS911 proteins were supplied *in trans* under the control of P_{lacUV5} .

Three IS911-derived proteins were tested in these studies: the full-length transposase, OrfAB (pAPT111); a derivative deleted for the C-terminal catalytic domain, OrfAB(1-149) (pLH114); and OrfA (pAPT156). Previous *in vitro* studies have shown that OrfAB binds poorly to IRR and IRL but that OrfAB(1-149) binds strongly and generates a paired-end complex. OrfA showed no significant binding (Haren *et al.*, 1998, 2000).

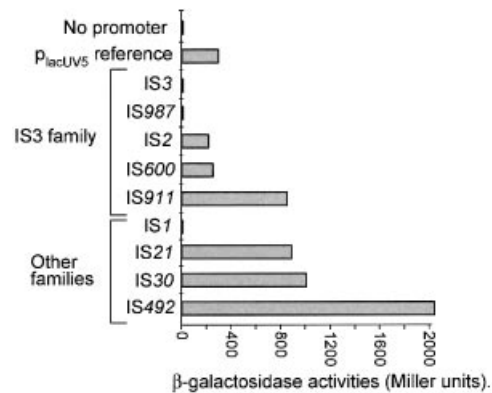


Fig. 9. Promoter activities of nine different IS junctions. Results of measurements of β -galactosidase activities of the nine constructions shown in Figure 8 are given in Miller units and represent the average of three separate experiments with a standard error of $\sim 15\%$.

The results of these experiments are presented in Figure 7. OrfA alone had no detectable effect on p_{junc} efficiency. On the other hand, a clear inhibition of $\sim 90\%$ of β -galactosidase levels was observed in the presence of OrfAB[1-149]. This is consistent with the observation that OrfA fails to bind either IS911 end *in vitro*, whereas OrfAB[1-149] binds strongly (Haren *et al.*, 2000). An inhibition of 70% was observed in the presence of OrfAB. Although we cannot rule out the possibility that part of this may be due to trace levels of a truncated OrfAB derivative protein, OrfAB*, which is often detected in these preparations (Ton-Hoang *et al.*, 1997; Haren *et al.*, 1998), this result is compatible with the low but measurable binding activity of OrfAB. The wild-type configuration of IS911 proteins (OrfA + OrfAB; pAPT112) showed a small but reproducible inhibitory effect (30%). It should be noted that the level of OrfAB in this configuration is significantly lower than that of OrfA. These results raise the possibility that transposase exerts a feedback control on p_{junc} activity in addition to its catalytic activity.

P_{junc} formation with other ISs?

The presence of a junction promoter has been described in IS elements belonging to other families including IS21 (Reimann *et al.*, 1989) and IS30 (Dalrymple, 1987). To determine how general this phenomenon is, we surveyed the sequence of the ends of known ISs for the capacity to form such promoters. Although putative -35 and -10 elements may be present in IRR and IRL, respectively, two limitations of this analysis are: whether the IS naturally generates a structure with two abutted ends and, if so, whether the spacer length is compatible with an active promoter. Several of these are presented in Figure 8B. Some have been demonstrated to generate IRR-IRL junctions (IS1, IS2, IS3, IS21, IS30, IS911, IS492), whereas others have not (IS600, IS987).

These junctions were synthesized and cloned into a standard *lac* reporter gene system (Figure 8A). The β -galactosidase activities specified by the resulting plasmids were measured and are presented in Figure 9. The results show that the IS3 family members, IS2 and IS600, exhibit a promoter activity comparable to p_{lacUV5} , IS911 has an activity 3-fold greater than p_{lacUV5} , while two

other members of the family, IS3 and IS987, have no detectable promoter activity. Thus junction promoter formation does not appear to have been chosen as a control strategy for all members of this family.

On the other hand, members of other families also show strong junction promoter activities. These include IS21 (IS21 family; 3-fold p_{lacUV5}), IS30 (IS30 family; 3-fold p_{lacUV5}) and IS492 (IS110 family; >6.5-fold p_{lacUV5}). IS1 (IS1 family), on the other hand, does not appear to exhibit junction promoter activity.

Discussion

The experiments described here were designed to determine whether the p_{junc} promoter, assembled by circularization of IS911, plays a role in regulating transposition activity as proposed in the model presented in Figure 1. Although the p_{junc} -10 and -35 hexamers do not entirely fit the consensus *Escherichia coli* promoter elements, the promoter does include an extended -10 TG motif (Burr *et al.*, 2000). This presumably contributes to the relatively high activity of this promoter (2.8-fold greater than that of p_{lacUV5} ; Figure 9). In order to significantly reduce p_{junc} activity, it was found to be necessary to introduce three mutations into the probable -10 hexamer located in IRL. The residual activity was found to be 3% that of wild-type p_{junc} , a value similar to that maintained by the resident p_{IRL} (Ton-Hoang *et al.*, 1998), also present in these constructions. To minimize any direct effects on transposition activity of the mutated end, these mutations were chosen to modify base pairs that are not conserved between the two IRs. No detectable difference in recombination activity of the triple mutant, IRL_{1.4.5} and its wild-type counterpart was observed either *in vitro*, in figure-of-eight formation (Figure 3), or *in vivo* in both figure-of-eight and transposon circle formation (Figure 4).

Using a more sensitive genetic assay to measure integration activity of the preformed IRR-IRL junction (Figure 5), the mutated IRL_{1.4.5} exhibited at most a 1.5-fold lower activity compared with the wild-type IRL. This small effect may indeed be due to slight differences in transposition activity or in the environment of the IR, but is minimal compared with the reduction of at least 97% in promoter activity.

p_{junc} regulation of transposition

To determine whether p_{junc} plays a role in regulating overall transposition activity, the mutant IRL was placed at its natural position where it would be capable of driving transposase synthesis and its activity was compared with that obtained with a wild-type end. Two types of derivative were constructed. In one, p_{junc} would drive a wild-type reading frame configuration following transposon circularization, while in the other, the promoter would drive a fused-frame derivative producing OrfAB alone. The derivative carrying the fused-frame mutant had previously been shown to be particularly unstable (Polard *et al.*, 1994). This problem was overcome here by exploiting the temperature-sensitive nature of OrfAB activity (Haren *et al.*, 1997). The corresponding plasmid was constructed and maintained by imposing a high growth temperature (42°C) at all times.

The results of mating experiments using these donor plasmids (Figure 6) capable of forming a functional p_{junc} indicated that the activity of the element expressing the OrfAB fusion protein was significantly higher than that expressing the wild-type complement of proteins (p_{junc}^+ : 5×10^{-4} compared with 6×10^{-6}). In both cases, the presence of the mutated p_{junc} , p_{junc}^- reduced activity by a factor of 22 for the wild-type complement of proteins and 54-fold for the fused-frame derivative. This difference in overall transposition activity compares well with the ratio of 45 obtained by measurement of p_{junc} and p_{IRL} activities in a standard β -galactosidase assay (Ton-Hoang *et al.*, 1997). Suppression of p_{junc} activity therefore decreases the transposition frequency by a factor corresponding to the basal level of p_{IRL} activity compared with p_{junc} . These results demonstrate an important role of p_{junc} in the regulation of IS911 transposition in its natural configuration.

Regulation of expression in cis and preferential cis activity

p_{junc} -mediated expression *in cis* as observed here is distinct from the previously described preferential *cis* activity of various transposases (see Mahillon and Chandler, 1998). Although preferential *cis* activity has been concluded to occur in some circumstances for IS911, the experiments described here do not address this question directly. However, even in the absence of p_{junc} , OrfAB alone retained a 5-fold higher activity *in cis* (94×10^{-7} ; Figure 6B) under the control of the weak p_{IRL} compared with its activity *in trans* under control of the strong p_{lacUV5} (18.6×10^{-7} ; Figure 5B). In the case of the wild-type protein complement, it is possible that the absence of a measurable effect results from a combination of inherently low activity together with the difference in promoter strength. A true comparison would necessitate the use of promoters with identical strengths in both situations.

Differential activities of OrfAB alone and the wild-type protein complement

The results presented in Figures 5 and 6 also reiterate previous observations that OrfAB alone does not have the same effect at different steps of the transposition process as does the wild-type complement of proteins. This has been described in situations where these proteins were supplied *in trans* (Ton-Hoang *et al.*, 1997). Thus the frequency of integration of a preformed junction is 12- to 13-fold lower with OrfAB alone (Figure 5A) whereas, while globally lower, OrfAB alone sustains a 4-fold higher level of transposition in a situation requiring prior formation of the junction (Figure 5B). The stimulatory effect of OrfAB in this situation is more pronounced when it is provided *in cis* either with a functional p_{junc} (82-fold) or in the absence of p_{junc} (36-fold; Figure 6A and B).

Regulation of p_{junc} activity by transposition proteins

Although regulation of p_{junc} activity presumably occurs primarily by promoter assembly and disassembly, a more subtle modulation could occur by repression involving binding of IS911 proteins to the abutted IRs. The effect on p_{junc} expression of different IS911 proteins supplied *in*

trans (Figure 7) clearly indicated that a truncated derivative of the OrfAB transposase (OrfAB[1–149]) represses p_{junc} activity. This is consistent with the DNA-binding properties of the protein (Haren *et al.*, 2000; Normand *et al.*, 2001). Full-length transposase, which appears to bind less well, exhibits a measurably lower but significant effect. Although part of this repression could be due to the presence of truncated derivatives of OrfAB often found following partial purification of the protein (Ton-Hoang *et al.*, 1997; Haren *et al.*, 1998), this observation raises the possibility that p_{junc} activity could be controlled by feedback repression in addition to assembly and disassembly.

The presence of p_{junc} in other elements

IS911 is not unique in carrying a junction promoter. These have been described for several elements belonging to different IS families including IS21 (Reimann *et al.*, 1989), IS30 (Dalrymple, 1987) and IS492 (Perkins-Balding *et al.*, 1999). In a limited survey of IS3 family members, three, including IS911, exhibited a strong p_{junc} and two did not (Figures 8 and 9). It remains possible that the absence of promoter activity in certain cases is due to the choice of an incorrect spacer length between IRL and IRR or that the sequences of the ends themselves were incorrect. For two members of the IS3 family, IS987 and IS600, the formation of an IRR–IRL junction has yet to be formally demonstrated. Indeed, more extensive studies on IS3 in which the length of the spacer was varied also failed to reveal a p_{junc} activity (Sekine *et al.*, 1999). Of those elements from families other than IS3 whose transposition activity includes the formation of an IRR–IRL junction, IS492 exhibits exceptionally high activity (see also Perkins-Balding *et al.*, 1999), whereas p_{junc} activity of IS30 and IS21 is similar to that of IS911 (Figures 8 and 9) and IS1 (with an 8 bp spacer as found in IS1 transposon circles; Turlan and Chandler, 1995) shows no activity. Again, more extensive results using 6, 7, 8 and 9 bp spacers also failed to reveal an IS1 p_{junc} (Shiga *et al.*, 1999). Although it has not been examined here, it is interesting to note that IS256 also generates transposon circles and tandem IS dimers (M.Prudhomme, C.Turlan, J.-P.Claverys and M.Chandler, submitted). Inspection of such junctions (which carry a 5 or 6 bp spacer) reveals the presence of a nearly canonical –35 element together with a canonical –10. These elements are separated in a majority of cases by the optimal 17 bp spacing and, like the IS911 p_{junc} , many include the conserved extended –10 TG motif (Burr *et al.*, 2000).

Taken together, these results clearly demonstrate that IS911 has adopted a novel strategy for modulating its transposition activity via the assembly of a strong promoter intimately linked to the formation of a circular transposition intermediate and its disassembly upon integration of the circle. This assures that high levels of transposase expression occur only in the presence of the correct integration substrate, transposon circles. Once integrated, such circles lie ‘dormant’ and are activated only rarely to generate circles. Thus, the system is set up to ensure integration once these rare circles are formed and to limit transposition following their integration. Moreover, the strategy of activation of transposition by creation of a transitory promoter able to boost transposase expression

appears to be widespread, since several other IS elements tested also share this property. It is not universal, however, even within a single IS family. These observations therefore underline the fact that although different elements may share an overall transposition mechanism, the strategies that have been chosen to fine-tune transposition activities are not necessarily identical. This further emphasizes the diversity of transposable elements.

Materials and methods

Bacterial strains and media

JS219 (MC1061, *recA1*, *lacI^q*) has been described previously (Cam *et al.*, 1988) and was used as a donor strain in mating-out experiments. The recipient strain for mating-out experiments was MC240 [XA103, F⁻, *ara*, *del(lac pro)*, *gyrA* (*nalR*), *metB*, *argE^{am}*, *rpoB*, *thi*, *supF*]. NM522 *mutS* [F⁻, *lacI^q* Δ (*lacZ*)M15 *proA⁺B⁺supE thi* Δ (*lac-proAB*) Δ (*hsdMS-mcrB*)5 (*r_K⁻ m_K⁻ mcrBC⁻*) (*mutS::Tn10*)] was used for directed mutagenesis as described in Deng and Nickoloff (1992). DH5 α [F⁻, *endA1*, *hsdR17* (*r_K⁻ m_K⁺*) *supE44*, *thi1*, *recA1*, *gyrA* (*Nal^R*), *relA1*, Δ (*lacI2YA-argF*) U169, *deoR* (ϕ 80*dlac* Δ (*lacZ*) M15)] was used for β -galactosidase assays. Cultures were grown in Luria broth supplemented, where necessary, with ampicillin (Ap, 100 μ g/ml), oxacillin or methicillin (Ox or Met, 0.8 g/ml), chloramphenicol (Cm, 30 μ g/ml), kanamycin (Km, 25 μ g/ml), nalidixic acid (Nal, 20 μ g/ml), rifampicin (Rif, 50 μ g/ml), streptomycin (Sm, 20 μ g/ml), spectinomycin (Sp, 30 μ g/ml) and tetracycline (Tc, 15 μ g/ml).

Mutagenesis

Directed mutagenesis was based on the unique site elimination procedure developed by Deng and Nickoloff (1992) using the U.S.E. Mutagenesis Kit (Pharmacia Biotech). This approach utilizes two primers. One is used to introduce the desired mutation, the second eliminates a unique non-essential restriction site in the plasmid permitting selection of the mutant plasmid. A set of oligonucleotides (described in Figure 2B) was used to obtain simple, double or triple mutations in the –10 box of p_{junc} located in IRL. The substrate plasmid pCN99 was constructed by replacing the *Bam*HI–*Pst*I fragment from pBR322 by the *Bam*HI–*Pst*I from pAPT166 (Polard and Chandler, 1995b) bearing a wild-type IRL.

Plasmids

Transposase substrates. Plasmids carrying separated pairs of mutant IRL and wild-type IRR ends were obtained by directed mutagenesis of pCN99 as described above. The *Bam*HI–*Pst*I bearing a wild-type or mutant IRL_{1.4.5} was cloned into pCN100 as described in Normand *et al.* (2001) to generate pVK13 and pDV11, respectively.

Plasmids carrying an IRR–IRL junction, pDV23 [wild-type IRL (IRL_w) and pDV13 (IRL_{1.4.5}) were assembled in two steps. First, transposon circles were generated *in vivo* from pVK13 and pDV11 using pAPT111 as a source of transposase (Polard and Chandler, 1995b). After agarose gel separation and isolation, the circular transposon DNAs were linearized by *Xba*I and treated with DNA polymerase I Klenow fragment. This generates a linear molecule carrying the junctions upstream a OrfA–*lacZ* gene fusion. This fragment was then cloned into the gel-purified 3325 bp *Bam*HI–*Hind*III fragment obtained from pAPT120 (Ton-Hoang *et al.*, 1997), which had been treated with DNA polymerase I Klenow fragment and dephosphorylated with Shrimp phosphatase.

Plasmids carrying IS911 derivatives with the wild-type configuration of transposon genes *in cis* were constructed as follows. pDV27 (IRL_{1.4.5}) was obtained by partial digestion of pAPT56.2 (Polard *et al.*, 1994) with *Bal*I, purification of the 4640 bp fragment containing the transposon *orfs* and a downstream Cm^R gene, and ligation with the purified 3586 bp fragment obtained after *Bal*I restriction of pDV11. Clones in which the insert was in the required orientation were distinguished by *Pst*I–*Hind*III digestion.

Plasmids carrying the fused-frame transposase OrfAB gene, pDV22 and pDV29, were obtained by substitution of the 987 bp *Sna*BI–*Pme*I fragment of pAPT111 (containing the *orfAB* fusion; Polard and Chandler, 1995b) into pAPT56.2 (IRL_w) or pDV27 (IRL_{1.4.5}). All cultures were grown at 42°C to inactivate the transposase during successive transformations.

Derivatives of pAPT56.2 and pDV27 devoid of transposon genes but retaining the Cm^R gene were constructed by deletion between *Pme*I and *Sna*BI sites and recircularization of the resulting 7241 bp fragment. This

generated pDV19 and pDV28 containing, respectively, IRL_{wt} and IRL_{1,4,5} ends.

pBST2 carrying a mutation on the terminal 5'-CA-3' of IRL and IRR in the junction to inactivate integration has been described previously (Ton-Hoang *et al.*, 1997).

Plasmids supplying transposition functions in trans. pAPT110, pAPT111 and pAPT112, which express no IS911 proteins, OrfAB alone or OrfA + OrfAB (wild-type configuration), respectively, under control of the p_{lacUV5} promoter have been described previously (Polard and Chandler, 1995b). In addition, experiments designed to test the inhibition effect of IS911 proteins on the activity of p_{JunC}, also employed pLH14 (OrfAB[1-149]; Haren *et al.*, 1998) and pAPT156 (OrfA; Ton-Hoang *et al.*, 1998). More detailed descriptions of the construction of these plasmids are available on request.

Alkaline and cleared lysates

Alkaline lysates were prepared as described previously (Birboim and Doly, 1979). Cleared lysates were prepared as described previously (Clewell and Helinski, 1969) with the following modifications: the cleared supernatants were collected and incubated with proteinase K (0.5 mg/ml) and SDS (0.5%) for 1 h at 50°C. DNA was concentrated by isopropanol precipitation and resuspended in 100 µl of TE buffer and purified by using a Qiaquick kit as described by the manufacturer (Qiagen).

Mating-out assays

The transposition frequencies of the different IS911 synthetic elements was measured by standard mating-out assay (Galas and Chandler, 1982) using the conjugative plasmid target pOX38Km (Chandler and Galas, 1983). Strain JS219 containing pOX38Km was transformed with the different compatible derivatives as source of OrfAB and/or OrfA, synthetic elements carrying the chloramphenicol acetyltransferase gene (Cm) or plasmids carrying IRR-IRL junction with the β-lactamase gene (Ap) as phenotypic markers. Overnight cultures grown at 42°C to reduce OrfAB activity, which is temperature sensitive (Haren *et al.*, 1997), from a single colony in LB supplemented with Ap, Km, Sp and Sm (and Cm when present), were diluted into LB without antibiotics at an OD₅₄₀ of 0.05 at 37°C, with shaking. Growth was continued to an OD₅₄₀ of 0.5 and followed by 1 h incubation without agitation to allow pili formation. Donor cells were then mixed at a 1:1 ratio with the recipient XA103 cells (Nal^R, Rif^R) also grown at 37°C. Suitable dilutions were plated on LB agar plates supplemented with Nal, Rif, Km (scoring for transfer) and Nal, Rif, Km, Cm (or Ap and Met instead of Cm for plasmids carrying junctions) for scoring transposition or integration, and incubated overnight at 37°C.

Transposase purification and in vitro activity assay

OrfAB was purification following expression from pAPT158 (Ton-Hoang *et al.*, 1998) under the control of the p_{lacUV5} promoter and bacteriophage T7 φ 10 ribosome-binding site sequence from pAR30-39 (Studier and Moffatt, 1986).

Figure-of-eight formation as a function of time was performed at 30°C for 1-15 min in a final volume of 50 µl containing 2.5 µg of DNA substrates (pDV19 or pDV28) and 2 µg of transposase, in buffer B (20 mM HEPES pH 7.5, 5 mM DTT, 200 mM KCl, 10 mM MgCl₂ and 10% glycerol). Aliquots (10 µl) were removed at intervals and the reaction was stopped with 20 mM EDTA on ice. The samples were then treated with 0.5 mg/ml (final concentration) of proteinase K 1 h at 50°C, and purified with Qiaquick purification minicolumns as described by the manufacturer (Qiagen).

Figure-of-eight and circle formation in vivo

Titration experiments as a function of isopropyl-β-D-thiogalactopyranoside (IPTG) concentration (used to induce OrfAB production) were performed to compare the level of figure-of-eight and transposon circle molecules with IRL_{wt} or IRL_{1,4,5}. Overnight cultures at 42°C (to inactivate residual transposase) of MC1061 *recA* carrying the constructions to be tested were diluted in fresh LB medium at 42°C at an OD₆₀₀ of 0.05. After ~90 min of growth (OD₆₀₀ = 0.3-0.4), cultures were transferred to 30°C and after 5 min incubation, to equilibrate the temperature, increasing concentrations of IPTG were added (0, 0.025, 0.05, 0.1, 0.2, 0.5 mM). Cultures were grown for a further 60 min at 30°C and stopped by centrifugation at 4°C. DNA was then extracted by the cleared lysate method, digested with *Xho*I restriction enzymes and loaded on a 0.8% agarose gel.

Cloning junctions of a selection of ISs

Both previously identified and potential IRR-IRL junctions from various IS elements were analysed by measurement for the presence and strength of a junction promoter. These include the IS3 family members, IS2 (L.A.Lewis and N.D.Grindley, personal communication), IS3 itself (Sekine *et al.*, 1994), IS987 (Hermans *et al.*, 1991), IS600 (Matsutani *et al.*, 1987), IS911 (this work), and members of other IS families such as IS1 (Turlan and Chandler, 1995), IS21 (Reimmann *et al.*, 1989; S.Schmid and D.Haas, personal communication), IS30 (Olasz *et al.*, 1993) and IS492 (Perkins-Balding *et al.*, 1999), whose transposition mechanisms have been postulated to proceed via formation of tandem or circles creating junctions of their ends. The junctions were synthesized with an extension of 5-11 bases on either side of the -35 and -10 consensus sequences so as to include the complete sequence of potential promoters. Double-stranded fragments were constructed by annealing complementary synthetic oligonucleotides from 30 to ~55 nucleotides with protruding ends compatible with *Bam*HI and *Xba*I restriction sites. About 50 pmol of single-stranded fragments were mixed with a ratio of 1/1.5 (in order to completely anneal one of them) in TEN buffer (10 mM Tris-HCl pH 8, 1 mM EDTA, 50 mM NaCl), boiled for 5 min, and annealed by slowly decreasing the temperature for 4-5 h. The double-stranded fragments were then 5'-phosphorylated with T4 kinase and cloned with T4 DNA ligase (Gibco-BRL) into plasmid pCB267 (Schneider and Beck, 1986), linearized by digestion with *Bam*HI and *Xba*I. This promoter-probe vector carries a multiple cloning site in upstream of a *lacZ* marker without promoter. DNA of 10 clones were extracted by alkaline lysates and directly sequenced with Amersham kit. The p_{lacUV5} promoter was also cloned upstream of the *lacZ* gene and used as reference for β-galactosidase dosage experiments.

β-galactosidase assays

Cultures of DH5α cells transformed with the different constructions to be tested were grown overnight at 37°C in LB medium supplemented with ampicillin (100 µg/ml) and methicillin (1 mg/ml), and then diluted into fresh medium at an OD₆₀₀ of 0.05. In experiments where IS911 proteins were supplied *in trans*, IPTG (1 mM final concentration) was added to induce production under control of the p_{lacUV5} promoter. After ~2 h of growth (OD₆₀₀ = 0.3-0.4), β-galactosidase was measured according to the method of Miller (1972), except that cultures were performed in LB medium instead of VB supplemented with glucose and casamino acids, BSA (1 mg/ml) was included in the reaction, and lysis was accomplished by SDS-chloroform treatment. The lysates were centrifuged before measurement at OD₄₂₀.

Acknowledgements

We thank members of the Mobile Genetic Elements group both past (M.Betermier, O.Fayet, L.Haren, P.Polard and M.-F.Prère) and present (R.Alazard, C.Loot, P.Rousseau, B.Ton-Hoang and C.Turlan) for suggestions during the course of this work, and for critically reading the manuscript. This work benefited from grants from the CNRS (UPR9007/UMR5100), the Association pour la Recherche contre le Cancer, the Region Midi-Pyrénées, the 'Programme Physique et Chimie du vivant' (CNRS) and the 'Programme microbiologie' (MENRST). This paper is dedicated to C.H.Dalton.

References

- Berger,B. and Haas,D. (2001) Transposase and cointegrase: specialized transposition proteins of the bacterial insertion sequence IS21 and related elements. *Cell Mol. Life Sci.*, **58**, 403-419.
- Birboim,H.C. and Doly,J. (1979) A rapid alkaline extraction procedure for screening recombinant plasmid DNA. *Nucleic Acids Res.*, **7**, 1513-1523.
- Burr,T., Mitchell,J., Kolb,A., Minchin,S. and Busby,S. (2000) DNA sequence elements located immediately upstream of the -10 hexamer in *Escherichia coli* promoters: a systematic study. *Nucleic Acids Res.*, **28**, 1864-1870.
- Cam,K., Bejar,S., Gil,D. and Bouche,J.P. (1988) Identification and sequence of gene *dicB*: translation of the division inhibitor from an in-phase internal start. *Nucleic Acids Res.*, **16**, 6327-6338.
- Chandler,M. and Galas,D.J. (1983) Cointegrate formation mediated by Tn9. II. Activity of IS1 is modulated by external DNA sequences. *J. Mol. Biol.*, **170**, 61-91.
- Clewell,D.B. and Helinski,D.R. (1969) Supercoiled circular

- DNA-protein complex in *Escherichia coli*: purification and induced conversion to an open circular DNA form. *Proc. Natl Acad. Sci. USA*, **62**, 1159–1166.
- Dalrymple, B. (1987) Novel rearrangements of IS30 carrying plasmids leading to the reactivation of gene expression. *Mol. Gen. Genet.*, **207**, 413–420.
- Deng, W.P. and Nickoloff, J.A. (1992) Site-directed mutagenesis of virtually any plasmid by eliminating a unique site. *Anal. Biochem.*, **200**, 81–88.
- Fayet, O., Ramond, P., Polard, P., Prere, M.F. and Chandler, M. (1990) Functional similarities between retroviruses and the IS3 family of bacterial insertion sequences? *Mol. Microbiol.*, **4**, 1771–1777.
- Galas, D.J. and Chandler, M. (1982) Structure and stability of Tn9-mediated cointegrates. Evidence for two pathways of transposition. *J. Mol. Biol.*, **154**, 245–272.
- Haren, L., Betermier, M., Polard, P. and Chandler, M. (1997) IS911-mediated intramolecular transposition is naturally temperature sensitive. *Mol. Microbiol.*, **25**, 531–540.
- Haren, L., Normand, C., Polard, P., Alazard, R. and Chandler, M. (2000) IS911 transposition is regulated by protein-protein interactions via a leucine zipper motif. *J. Mol. Biol.*, **296**, 757–768.
- Haren, L., Polard, P., Ton-Hoang, B. and Chandler, M. (1998) Multiple oligomerisation domains in the IS911 transposase: a leucine zipper motif is essential for activity. *J. Mol. Biol.*, **283**, 29–41.
- Haren, L., Ton-Hoang, B. and Chandler, M. (1999) Integrating DNA: transposases and retroviral integrases. *Annu. Rev. Microbiol.*, **53**, 245–281.
- Hermans, P.W., van Soolingen, D., Bik, E.M., de Haas, P.E., Dale, J.W. and van Embden, J.D. (1991) Insertion element IS987 from *Mycobacterium bovis* BCG is located in a hot-spot integration region for insertion elements in *Mycobacterium tuberculosis* complex strains. *Infect. Immun.*, **59**, 2695–2705.
- Kallastu, A., Horak, R. and Kivisaar, M. (1998) Identification and characterization of IS1411, a new insertion sequence which causes transcriptional activation of the phenol degradation genes in *Pseudomonas putida*. *J. Bacteriol.*, **180**, 5306–5312.
- Kulkosky, J., Jones, K.S., Katz, R.A., Mack, J.P. and Skalka, A.M. (1992) Residues critical for retroviral integrative recombination in a region that is highly conserved among retroviral/retrotransposon integrases and bacterial insertion sequence transposases. *Mol. Cell. Biol.*, **12**, 2331–2338.
- Lewis, L.A. and Grindley, N.D. (1997) Two abundant intramolecular transposition products, resulting from reactions initiated at a single end, suggest that IS2 transposes by an unconventional pathway. *Mol. Microbiol.*, **25**, 517–529.
- Lyon, B.R., Gillespie, M.T. and Skurray, R.A. (1987) Detection and characterization of IS256, an insertion sequence in *Staphylococcus aureus*. *J. Gen. Microbiol.*, **133**, 3031–3038.
- Mahillon, J. and Chandler, M. (1998) Insertion sequences. *J. Bacteriol.*, **180**, 5306–5312.
- Matsutani, S., Ohtsubo, H., Maeda, Y. and Ohtsubo, E. (1987) Isolation and characterization of IS elements repeated in the bacterial chromosome. *J. Mol. Biol.*, **196**, 445–455.
- Miller, J.H. (1972) *Experiments in Molecular Genetics*. Cold Spring Harbor Laboratory Press, Cold Spring Harbour, NY.
- Mizuuchi, K. (1992) Transpositional recombination: mechanistic insights from studies of mu and other elements. *Annu. Rev. Biochem.*, **61**, 1011–1051.
- Normand, C., Duval-Valentin, G., Haren, L. and Chandler, M. (2001) The terminal inverted repeats of IS911: requirements for synaptic complex assembly and activity. *J. Mol. Biol.*, **308**, 853–871.
- Olasz, F., Stalder, R. and Arber, W. (1993) Formation of the tandem repeat (IS30)₂ and its role in IS30-mediated transpositional DNA rearrangements. *Mol. Gen. Genet.*, **239**, 177–187.
- Perkins-Balding, D., Duval-Valentin, G. and Glasgow, A.C. (1999) Excision of IS492 requires flanking target sequences and results in circle formation in *Pseudomonas atlantica*. *J. Bacteriol.*, **181**, 4937–4948.
- Polard, P. and Chandler, M. (1995a) Bacterial transposases and retroviral integrases. *Mol. Microbiol.*, **15**, 13–23.
- Polard, P. and Chandler, M. (1995b) An *in vivo* transposase-catalyzed single-stranded DNA circularization reaction. *Genes Dev.*, **9**, 2846–2858.
- Polard, P., Prere, M.F., Fayet, O. and Chandler, M. (1992) Transposase-induced excision and circularization of the bacterial insertion sequence IS911. *EMBO J.*, **11**, 5079–5090.
- Polard, P., Seroude, L., Fayet, O., Prere, M.F. and Chandler, M. (1994) One-ended insertion of IS911. *J. Bacteriol.*, **176**, 1192–1196.
- Reimann, C., Moore, R., Little, S., Savioz, A., Willetts, N.S. and Haas, D. (1989) Genetic structure, function and regulation of the transposable element IS21. *Mol. Gen. Genet.*, **215**, 416–424.
- Rezsohazy, R., Hallet, B., Delcour, J. and Mahillon, J. (1993) The IS4 family of insertion sequences: evidence for a conserved transposase motif. *Mol. Microbiol.*, **9**, 1283–1295.
- Rowland, S.J. and Dyke, K.G. (1990) Tn552, a novel transposable element from *Staphylococcus aureus*. *Mol. Microbiol.*, **4**, 961–975.
- Schneider, K. and Beck, C.F. (1986) Promoter-probe vectors for the analysis of divergently arranged promoters. *Gene*, **42**, 37–48.
- Sekine, Y., Aihara, K. and Ohtsubo, E. (1999) Linearization and transposition of circular molecules of insertion sequence IS3. *J. Mol. Biol.*, **294**, 21–34.
- Sekine, Y., Eisaki, N. and Ohtsubo, E. (1994) Translational control in production of transposase and in transposition of insertion sequence IS3. *J. Mol. Biol.*, **235**, 1406–1420.
- Shiga, Y., Sekine, Y. and Ohtsubo, E. (1999) Transposition of IS1 circles. *Genes Cells*, **4**, 551–561.
- Studier, F.W. and Moffatt, B.A. (1986) Use of bacteriophage T7 RNA polymerase to direct selective high-level expression of cloned genes. *J. Mol. Biol.*, **189**, 113–130.
- Ton-Hoang, B., Betermier, M., Polard, P. and Chandler, M. (1997) Assembly of a strong promoter following IS911 circularization and the role of circles in transposition. *EMBO J.*, **16**, 3357–3371.
- Ton-Hoang, B., Polard, P. and Chandler, M. (1998) Efficient transposition of IS911 circles *in vitro*. *EMBO J.*, **17**, 1169–1181.
- Turlan, C. and Chandler, M. (1995) IS1-mediated intramolecular rearrangements: formation of excised transposon circles and replicative deletions. *EMBO J.*, **14**, 5410–5421.
- Turlan, C. and Chandler, M. (2000) Playing second fiddle: second-strand processing and liberation of transposable elements from donor DNA. *Trends Microbiol.*, **8**, 268–274.
- Welz, C. (1993) Funktionelle analyse des Bakteriellen Insertionselements IS150. PhD thesis. Albert-Ludwigs-Universität Freiburg, Freiburg, Germany.

Received July 30, 2001; revised and accepted August 29, 2001