

Temperature-modulated Alternative Splicing and Promoter Use in the Circadian Clock Gene *frequency*[□]

Hildur V. Colot,* Jennifer J. Loros,[†] and Jay C. Dunlap*

Departments of *Genetics and [†]Biochemistry, Dartmouth Medical School, Hanover, NH 03755

Submitted August 15, 2005; Revised September 18, 2005; Accepted September 20, 2005
Monitoring Editor: Greg Matera

The expression of FREQUENCY, a central component of the circadian clock in *Neurospora crassa*, shows daily cycles that are exquisitely sensitive to the environment. Two forms of FRQ that differ in length by 99 amino acids, LFRQ and SFRQ, are synthesized from alternative initiation codons and the change in their ratio as a function of temperature contributes to robust rhythmicity across a range of temperatures. We have found *frq* expression to be surprisingly complex, despite our earlier prediction of a simple transcription unit based on limited cDNA sequencing. Two distinct environmentally regulated major promoters drive primary transcripts whose environmentally influenced alternative splicing gives rise to six different major mRNA species as well as minor forms. Temperature-sensitive alternative splicing determines AUG choice and, as a consequence, the ratio of LFRQ to SFRQ. Four of the six upstream ORFs are spliced out of the vast majority of *frq* mRNA species. Alternative splice site choice in the 5' UTR and relative use of two major promoters are also influenced by temperature, and the two promoters are differentially regulated by light. Evolutionary comparisons with the Sordariaceae reveal conservation of 5' UTR sequences, as well as significant conservation of the alternative splicing events, supporting their relevance to proper regulation of clock function.

INTRODUCTION

Circadian rhythms are daily oscillations in gene expression and activity observed in virtually all groups of organisms. They are driven by an endogenous clock that integrates environmental input to allow the organism to synchronize its activities with the daily cycles of light and temperature (Dunlap *et al.*, 2004). In many organisms studied to date, a core of the clock is composed of a negative feedback loop (Bell-Pedersen *et al.*, 2005); in *Neurospora*, this loop comprises a negative element, the *frequency* (*frq*) gene, whose transcription is activated by the positive elements, the products of the *wc-1* and *wc-2* genes (Liu, 2003; Dunlap and Loros, 2004). FRQ in turn feeds back to repress its own synthesis by interacting with and influencing the phosphorylation status of the WC-1 and WC-2 proteins (Liu, 2003; Schafmeier *et al.*, 2005). This transcription/translation-based negative feedback loop thus generates a self-sustaining oscillation in the components of the clock. The levels of both *frq* RNA and FRQ protein oscillate with a circadian period and this daily oscillation is necessary for the circadian clock (Aronson *et al.*, 1994b). FRQ also exerts positive influences on the levels of WC-1 and WC-2 and these positive feedback loops interlock with the negative feedback loop to contribute to the robustness of the rhythm (Lee *et al.*, 2000; Cheng *et al.*, 2001, 2002).

Light and temperature are the major environmental stimuli that keep the clock in tune with the environment. Although light is primarily an entraining signal, temperature has a more complex and interesting relationship to the clock.

An organism experiences large variations in ambient temperature but the clock maintains a relatively constant period by a mechanism known as temperature compensation. Nevertheless, the clock can be reset by temperature steps and temperature pulses, and temperature can be a stronger entraining influence than light under certain experimental paradigms in *Neurospora* (Liu *et al.*, 1998), whereas in many other systems light is predominant (Dunlap *et al.*, 2004). Interestingly, the temperature range within which clocks can function is more restricted than the range within which the organism can thrive. These considerations led us to studies of the influence of temperature on the molecular mechanism of the oscillator (Liu *et al.*, 1997, 1998).

Previous work (Garceau *et al.*, 1997) revealed that FRQ protein is synthesized in two forms, LFRQ and SFRQ, which differ in length by 99 amino acids. The two proteins arise from the use of two alternative translation initiation sites. Additionally, these protein coding sequences are preceded by a long 5' UTR containing several small upstream open reading frames (uORFs), and deletion of a subset of these increased the overall level of expression of total FRQ (Liu *et al.*, 1997). This was consistent with actions of a leaky ribosome scanning mechanism and, interestingly, the relative use of the two start codons was seen to be dependent on temperature within the physiological range of clock function, such that the ratio of LFRQ to SFRQ increased as the temperature was raised from 20 to 30°C (Liu *et al.*, 1997). The synthesis of both protein forms was necessary for robust clock function. Sequence analysis of five non-full-length cDNAs (Aronson *et al.*, 1994a) was consistent with a model whereby *frq* was expressed from a simple transcription unit with a single promoter and no splicing. This led to the interpretation that the thermosensitive alternative translation initiation is due to direct effects of temperature on translation, for example modulation of the extent of leaky ribosome scanning (Liu *et al.*, 1997; Kozak, 2002).

This article was published online ahead of print in *MBC in Press* (<http://www.molbiolcell.org/cgi/doi/10.1091/mbc.E05-08-0756>) on September 29, 2005.

□ The online version of this article contains supplemental material at *MBC Online* (<http://www.molbiolcell.org>).

Address correspondence to: Jay C. Dunlap (jay.c.dunlap@dartmouth.edu).

We sought to extend this work through use of strand-specific primers and polysomal RNA, but results soon indicated discrepancies with this model, and the identification of a full-length antisense transcript (Kramer *et al.*, 2003) provided a partial explanation: The previously sequenced partial cDNAs had arisen from both the sense and antisense transcripts and the preliminary view of the *frq* transcription unit had perforce convolved these. For this reason, and to understand the basis for the temperature-dependent choice of initiation codon, we used strand-specific primers for RT-PCR and 5' RACE (rapid amplification of cDNA ends), along with ribonuclease protection assays, to develop a detailed analysis of the structure of the 5' region of *frq* transcripts, how they are regulated, and how the FRQ initiation codon is chosen. The resulting picture reveals one of the most intriguing and unexpectedly complex transcription units to be described in a lower eukaryote. Choice of the FRQ initiation codon is the result of a temperature-influenced alternative splicing event. Overall, the extent, variety and magnitude of the environmental influences on promoter choice and alternative splicing may reflect the importance of the expression of this key circadian clock gene. Additionally, they extend the domain of such complex transcriptional and posttranscriptional control to nonmulticellular organisms.

MATERIALS AND METHODS

Strains, Growth Conditions, and Race Tube Assay

Neurospora strains 87-3 (*bd; a*), KAJ120 (Aronson *et al.*, 1994a), YL15, YL31 (Liu *et al.*, 1997), and HVC16 (this study) were cultured, harvested, and analyzed on race tubes by standard methods (Davis and deSerres, 1970; Aronson *et al.*, 1994b) and as previously described (Froehlich *et al.*, 2003). Analysis of race tubes was done with Chrono (Roenneberg and Taylor, 2000).

Plasmids

pHVC16, harboring two point mutations in the 5' splice site of intron 2, was made by site directed mutagenesis in the plasmid pUC19.*frq*HindIII described previously (Liu *et al.*, 1997), using the Transformer Site-directed Mutagenesis kit (Clontech, Palo Alto, CA) according to the manufacturer's instructions. The mutagenic primer was CACAAGCTGCTCGAACATGAC-TAGCATCGCAGGCTTC. The *AflIII*/*DraIII* fragment from the resulting construct was subcloned into pKAJ120 digested with *AflIII* and *DraIII* to create pHVC16. The mutation was verified by sequencing the plasmid DNA. pHVC16 was transformed into the *his-3* locus of strain 93-4 as previously described (Bell-Pedersen *et al.*, 1996). pYL6, used for the RPA experiments, contains the 637-base pair *EcoRI*/*EcoNI* fragment of the 5' UTR of *frq*, followed by a T3 promoter for the in vitro transcription of antisense riboprobes.

RNA Analyses

Cultures were grown in liquid and harvested as described above. RNA for all analyses was made from 50 to 100 mg of frozen mycelium with Trizol (Invitrogen, Carlsbad, CA) following the manufacturer's recommendations including modifications specific for filamentous fungi: to remove cell wall debris, the frozen tissue was ground with 1 ml of Trizol in liquid nitrogen in a mortar and pestle, transferred to a microfuge tube, allowed to thaw, and centrifuged 10 min before the addition of chloroform. Subsequent steps were exactly as recommended. Before RT-PCR, the RNA was treated with amplification grade DNase (Invitrogen). The *C.therm.* One Step RT-PCR System (Roche, Indianapolis, IN) was used for RT-PCR analyses, according to the manufacturer's directions. Total DNase-treated RNA, 250 ng, was subjected to 25–28 cycles of PCR (which was determined to be in the linear range of the reaction) and 3.5 min as the initial extension time. For Figure 2B, 5 μ Ci 32 P-dCTP was included in the PCR reaction and the products were separated on a denaturing polyacrylamide gel. For Figure 3A, one-fifth of the RT-PCR reaction was separated on a 5% nondenaturing polyacrylamide gel and stained with VistaGreen (Molecular Probes, Eugene, OR). Band intensities were determined on a Storm PhosphorImager (Molecular Dynamics, Sunnyvale, CA) and normalized for fragment size to obtain the relative abundance of each band within a given sample. The primers used for these experiments were: CCGCACCCGACTCACCTGACCG and GATATGGCTCTCGTCAT-GAAAGGC for *Neurospora*. For *Sordaria*, the primers used in the forward direction were as follows: GCTGCATCGCATCCACTTCGCACACC, GCAAAAACG-GCATTTGGATGA, and AACAGAACGTAGCAGTGTGGC, and the primer for the reverse direction was GGATTCGGTCACTCCAGTGGC.

5' RACE was performed with the Gene Racer kit (Invitrogen) according to the manufacturer's instructions. Total RNA, 8 μ g, prepared with Trizol from a wild-type strain grown at 20°C and harvested at DD19 was used, and the cDNA was generated with random primers. Several gene-specific primers were used to generate the final fragments for cloning and sequencing.

Real-time RT-PCR analyses were done as follows: the RT step used the TaqMan (Applied Biosystems, Foster City, CA) reverse transcription system and 200–300 ng RNA per 25 μ l of reaction. The PCR was done with 2 μ l of the RT reaction in a final volume of 25 μ l, using the ABI PRISM 7700 Sequence Detection System with either the TaqMan SYBR Green PCR Core Reagents or the QuantiTect SYBR Green PCR Kit (Qiagen, Chatsworth, CA). Cycling conditions were as recommended by each manufacturer. The primers used for the forward direction were as follows: GGGTAGTCGTACTTTACACC for Ua and CCCCAGGAAAGCCAGAAAATCAAAGACACC for Ub; the reverse primer for both transcripts was CATGATACGGCTGTGTGCGTGTCC. For the data shown in Figure 4, raw data were obtained as C_T values (cycle number at which the amplification curve crosses a given threshold value). The difference between the C_T values for the two primer pairs for a given RNA (ΔC_T) was then compared with ΔC_T for other RNAs to obtain a value for the relative change in the ratio Ua/Ub at different temperatures. Two different types of validation experiments were performed: On the one hand, relative quantitation of each sample by use of a standard curve for each primer pair, followed by the determination and comparison of Ua/Ub ratios, gave results similar to the more direct ΔC_T method. On the other, samples with RNAs from deletion constructs that can generate only Ua or Ub transcripts were mixed in various ratios, subjected to real-time RT-PCR and analyzed by the ΔC_T method; the changes in Ua/Ub values determined experimentally corresponded closely to the known ratios in the input RNA mixtures.

Ribonuclease protection assays (RPA) were done with the HybSpeed RPA kit (Ambion, Austin, TX) according to the manufacturer's instructions. The probe was made by transcription from *KpnI*-digested pYL6 with T3 polymerase and 32 P-labeled UTP, followed by DNase digestion and gel purification. The riboprobe thus generated was 321 nucleotides (nt) long. Growth conditions, temperature or light treatments, and amounts of RNA used are indicated in the legend to Figure 5. The protected fragments were separated on denaturing polyacrylamide gels and quantitated on a PhosphorImager.

Western Blot Analysis

Protein extracts were prepared, treated with lambda phosphatase, and analyzed by Western blotting as described previously (Garceau *et al.*, 1997). Growth conditions are as indicated in the legend for Figure 2.

RESULTS

frq Has a Complex Transcription Unit

To understand the molecular basis for the temperature-dependent regulation of FRQ synthesis, we undertook a detailed analysis of the transcript structure upstream of and surrounding the LFRQ- and SFRQ-specific initiation codons. Figure 1A summarizes the results of numerous analyses that are described below and in Supplementary Figure S1, including RT-PCR, 5' RACE and ribonuclease protection assays (RPA). The more distal 5' end of the transcripts shown in Figure 1 is designated +1 as defined in previous experiments (Liu *et al.*, 1997), although there is heterogeneity in the exact start of transcription in this region and others (see below). The translation initiation sites of the large and small FRQ proteins, AUG_L and AUG_S (formerly referred to as AUG#1 and AUG#3; Liu *et al.*, 1997) are at positions 1519 and 1816, respectively. 5' RACE and RPA analyses have confirmed the position of the major start site and revealed another promoter downstream. The vast majority of transcripts generated by the upstream promoter (P_U) are alternatively spliced at two 5' splice sites (5'ss-a and 5'ss-b) in the 5' UTR and a common 3' splice site, resulting in the removal of 1155 (intron 1a) or 500 nt (intron 1b), respectively. 5'ss-b is also used by most of the transcripts originating at the downstream promoter (P_D). In all major transcripts, the various splicing events remove four out of the six uORFs (marked as asterisks in Figure 1A; Garceau, 1996; Liu *et al.*, 1997). RT-PCR and 5' RACE have also revealed the use of additional alternative 5' and 3' splice sites located within intron 1a in a small minority of transcripts (~5%; Supple-

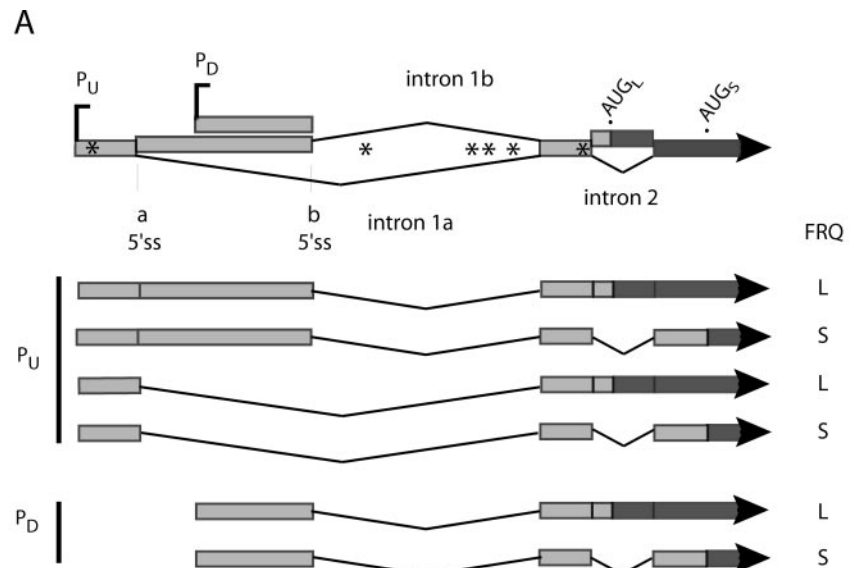
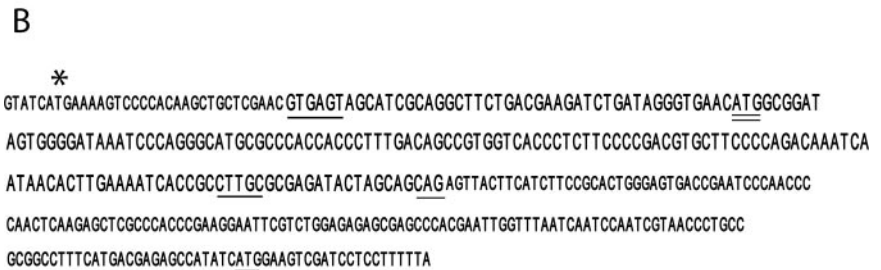


Figure 1. Schematic of *frq* transcript structure. (A) This diagram is a compilation of the results from many experiments (see below), and represents the first ca. 1900 nt of the transcribed region of *frq*. The alternative start sites are designated P_U and P_D . The broad Vs represent introns. Alternative 5' splice sites for the large upstream intronic region are called a and b. Intron 2 encompasses AUG_L , as shown. The asterisks (*) represent upstream AUGs. The lighter shading indicates exon sequences, which vary among the transcripts, and the darker shading denotes coding sequences. (B) The sequence of intron 2 and adjacent regions is shown. Consensus sequences for splicing are underlined; the 5' and 3' splice sites were determined experimentally, but the branchpoint sequence shown, CTTGC, is the closest match to the known consensus for *Neurospora* (see Results). Initiation codons for LFRQ and SFRQ are doubly underlined, and the ATG for uORF 6 is indicated by an asterisk.



mentary Figure S1), resulting in the retention of several uORFs (Supplementary Figure S1), as well as a minor population of transcripts that are not spliced in the 5' UTR.

A downstream intron (intron 2) encompassing AUG_L was also found by RT-PCR. Its sequence, as well as that of adjacent regions, is shown in Figure 1B. Alternative splicing of this 185-nt intron removes AUG_L from a subpopulation of transcripts, leaving AUG_S as the translation initiation site. Overall, six major transcripts arise from the major alternative splicing events in the 5' UTR and the coding region. The only noncoding sequence common to all transcripts is the 141 nt exon directly upstream of intron 2. This exon contains the one consistently present uORF, whose AUG is 71 nt upstream of AUG_L and 183 nt upstream of AUG_S (when intron 2 is spliced out). Downstream of the common exon sequence the proximal 5' UTR sequences of AUG_L and AUG_S are completely different and comprise 45 and 157 nt, respectively. The total lengths of the 5' UTRs range from ~363–975 nt, and the 5' UTRs of the transcripts that encode LFRQ are 112 nt shorter than those of the SFRQ transcripts.

Temperature Regulation of Alternative Splicing of *frq* Can Account for Temperature Regulation of the FRQ Isoform Population

We have previously reported that two different FRQ proteins are generated by the temperature-dependent choice between two alternative AUGs (Liu *et al.*, 1997). We proposed that leaky ribosome scanning (Kozak, 2002) led to the use of the downstream AUG, in a temperature-regulated

manner, to produce SFRQ. This view was supported by data showing the expression of both LFRQ and SFRQ from an inducible construct in which the FRQ ORF was directly fused to the *qa-2* promoter and 5' UTR (Merrow *et al.*, 1997). In the work reported here, we initially set out to confirm the mechanism (anticipated to be leaky scanning) by which the downstream AUG would be selected. However, results consistent with this model were not obtained. Instead, Figure 2, A and B, show the four products obtained by RT-PCR with the indicated primers; these correspond only to transcripts that start at P_U . Sequencing of the products showed two major alternative splicing events, as described above: splicing in the 5' UTR removes either intron 1a or 1b, and intron 2 is spliced in only some of the transcripts. Consistent results were seen from analysis of total RNA or from use of strand-specific primers with polysomal RNAs, and all revealed the presence of spliced products. Given this and in hindsight, we now view the appearance of LFRQ and SFRQ in the induced samples (Merrow *et al.*, 1997) as an artifact deriving from the absence of 5' UTR sequences sufficient to allow ribosomes to bind preferentially upstream of AUG_L .

Importantly, this finding made the prediction that splicing alone could lead to initiation of SFRQ from AUG_S , obviating the need to invoke translational mechanisms that would bypass the more-upstream AUG_L in a temperature-dependent manner. To test that idea, we made two point mutations in the 5' splice site consensus sequence to change it from GTGAGT (Figure 1B) to *a*TGAcT. These changes rendered the site nonfunctional as seen by the presence of only the unspliced products after RT-PCR (Figure 2, A and B).

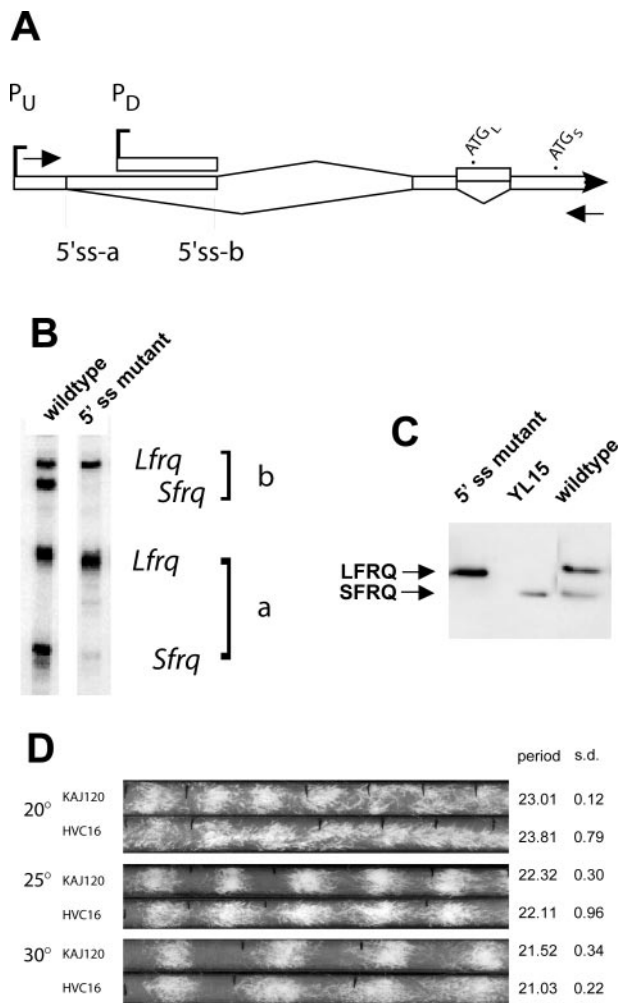


Figure 2. Splicing of intron 2 is necessary for translation to initiate at AUG_S. (A) Schematic of the 5' end of *frq* (see Figure 1) with primers for RT-PCR indicated by arrows. (B) RT-PCR products amplified from total RNA from a wild-type strain and a *frq*¹⁰ strain transformed with a *frq* construct (pHVC16) in which the 5' splice site for intron 2 has been mutated (see text). The four bands correspond to the top four transcripts depicted in Figure 1; this primer pair would not amplify transcripts coming from P_D. Note the absence of the bands (*Sfrq*) in the 5'ss mutant lane that correspond to splicing of intron 2; the two remaining bands reflect the use of alternative 5' splice sites a and b in the large 5' UTR intronic region, respectively. (C) Western analysis of FRQ protein made in three strains: wild-type, HVC16, and YL15 (a strain bearing a deletion of five uORFs, as well as AUG_L, which makes only SFRQ; Liu *et al.*, 1997). The 5' splice site mutant protein shown was prepared from tissue grown at 30°C, but other temperatures give a similar pattern with lower expression. The other strains were grown at 25°C; all were harvested 16 h after transfer to darkness (DD16), in the subjective morning. The extracts were treated with lambda protein phosphatase before analysis to allow clear visualization of SFRQ and LFRQ (Garceau *et al.*, 1997). (D) Race tube analysis of strain HVC16 compared with KAJ120 (a transformant bearing a complete wild-type copy of *frq* and surrounding sequences; Liu *et al.*, 1997) at three temperatures. The average periods and SDs are shown on the right (n = 6).

This mutation, in the context of an otherwise wild-type *frq* transcription unit, was transformed back into a *frq* deletion strain such that the only *frq* transcripts present arose from the construct. Consistent with this, when protein extracts

from the mutant strain were analyzed, they showed that no SFRQ was produced (Figure 2C). Race tube analysis of mutant and wild-type transformed strains shows somewhat more diffuse banding in the mutant at all temperatures tested (Figure 2D). At 20°C, the rhythm is clearly present and displays a period length similar to wild type, confirming previous observations (Liu *et al.*, 1997) that temperature compensation is still normal in a strain that cannot make SFRQ. The observed rhythm, however, is slightly less vigorous and is damped earlier in the mutant than in the wild type, consistent with the observation that the presence of both LFRQ and SFRQ contributes to the robustness of the rhythm at temperatures across the physiological range of the clock (Liu *et al.*, 1997). At 30°C, the period of the rhythm is slightly shorter in both mutant and wild type. Altogether it is clear that, although alternative splicing determines the choice of AUG_L versus AUG_S and the subsequent synthesis of LFRQ versus SFRQ, this choice does not influence the temperature compensation of the clock.

As shown previously (Liu *et al.*, 1997), the ratio of the proteins LFRQ and SFRQ changes with temperature. Our discovery of an intron whose splicing status determines AUG choice raised the possibility that splicing could be the thermosensitive event underlying the changing protein profile. We tested this hypothesis by performing quantitative RT-PCR assays of the extent of splicing of this intron as a function of temperature (Figure 3A). Within each lane, the relative levels of products were determined by quantitation of the DNA staining (see *Materials and Methods*); the ratios of the RNAs, *Lfrq* and *Sfrq*, are plotted in Figure 3B. It is clear that the proportion of spliced transcript (which can only produce SFRQ) indeed decreases as the temperature rises. The trend of the ratios of the S and L *frq* transcripts is quite similar to the trend of the protein ratios with increasing temperature (Liu *et al.*, 1997), consistent with a model in which the protein population is largely the direct reflection of the RNA population, whose composition in turn reflects the ambient temperature.

Choice of Upstream 5' Splice Sites Is Influenced by Temperature

Although it is clear that the temperature-influenced splicing of the second intron directs the type of FRQ protein made, the influence of temperature on *frq* expression extends beyond this. The RT-PCR results shown in Figure 3A further indicate that temperature also affects the relative levels of 5' UTR splice variants. The top pair of bands corresponds to the use of the downstream 5' splice site (5'ss-b; Figure 1A), resulting in products 655 nt longer (see above) than those corresponding to use of the upstream 5' splice site (5'ss-a; Figure 1A). It is readily apparent that the ratio of the shorter pair to the longer pair (5'ss-a/5'ss-b) decreases with increasing temperature, indicating that as the temperature rises, the downstream 5' splice site (5'ss-b) is increasingly preferred. This was confirmed by a real-time RT-PCR assay. Primers that span the two alternative exon-exon junctions were designed to allow only specific amplification of 5'ss-a or 5'ss-b products, respectively (see *Materials and Methods*). As shown in Figure 4, there is a fivefold higher 5'ss-a/5'ss-b ratio at 18 than at 31°C, indicating a shift in 5' splice site choice in favor of the more downstream one with a rise in temperature. This shift results in a higher proportion of transcripts with much longer 5' UTRs at the higher temperatures. Regardless of upstream 5' splice site choice, however, intron 2 splicing remains temperature sensitive (see Figure 3A). Figure 4 also addresses a secondary issue raised by the observation that alternative splicing of the plant gene AtGRP7 is autoregula-

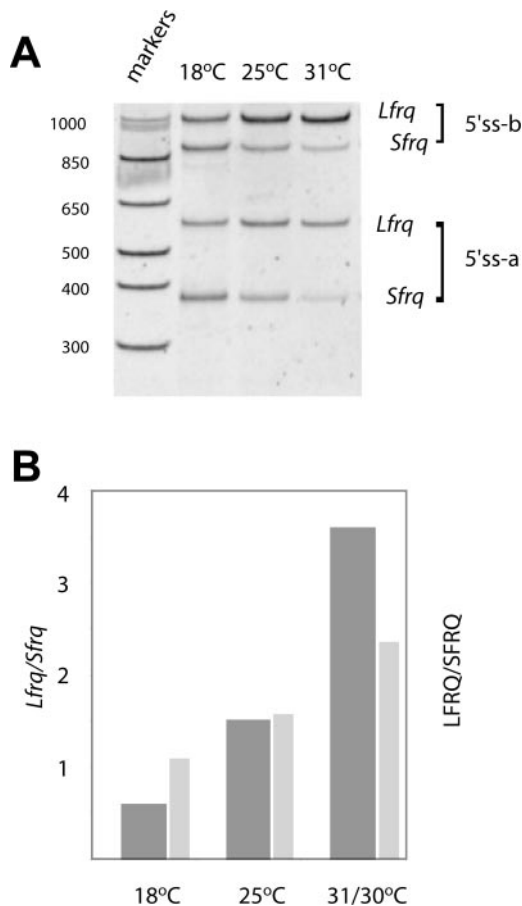


Figure 3. Levels of alternatively spliced products reflect the ambient temperature. (A) The gel shows RT-PCR products amplified from total RNA of strains grown at 18, 25, and 31°C in constant light (LL); the DNA was stained with VistraGreen and visualized on a Storm PhosphorImager. The primers and products are as in Figure 2. (B) The graph compares the ratios of the transcripts (dark bars), as determined from quantitation of the gel in A, with the ratios of the protein (light bars; Liu *et al.*, 1997) at three temperatures. The absolute values of the ratios vary somewhat from experiment to experiment but their relationships are always similar to the representative sample shown here. Preliminary experiments were performed to determine conditions under which the RT-PCR was linear (unpublished data). Quantitative estimates are based on comparisons of bands obtained within each sample and not between samples.

tory (Staiger *et al.*, 2003). One of the strains used here (YL31) is mutated in both AUG_L and AUG_S and thus produces no FRQ protein. Splicing, however, is normally temperature regulated, negating any possible role of FRQ in affecting its own splicing.

Ambient Light and Temperature Conditions Influence the Choice between Alternative Promoters

Results to this point have documented the effect of ambient temperature on splicing of intron 2 and the choice of the 5' splice site of intron 1, but temperature is only one of the two principal environmental influences on circadian rhythms; the other is light. Light has previously been shown to induce *frq* expression to high levels, an action that is the basis of light entrainment of the rhythm (Crosthwaite *et al.*, 1995; Liu, 2003). Earlier experiments to determine the start of *frq*

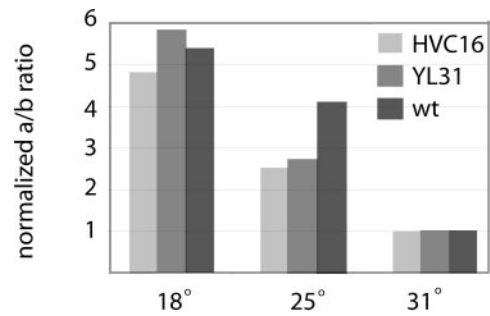


Figure 4. Choice of 5' splice site for alternative splicing in the 5' UTR is thermosensitive. Real-time RT-PCR was used to compare the ratios of U_a/U_b transcripts at different temperatures (see *Materials and Methods*). U_a/U_b at 31°C was set to 1. The three degrees of shading represent RNA from three different strains, all grown in LL for 22–24 h at the indicated temperatures: light gray is HVC16, the intron-2 5' splice site mutant; medium gray is YL31 (Liu *et al.*, 1997), which has mutations in AUG_L and AUG_S and makes an untranslatable *frq* transcript; and dark gray is wild-type.

transcription pinpointed a start site that has been designated as +1 (Liu *et al.*, 1997; Froehlich *et al.*, 2002, 2003). However, the existence of more than one transcription start site has been suggested by the presence of two distinct size classes of *frq* transcripts as seen following lengthy exposures of Northern blots of RNA isolated under some conditions (unpublished results). To investigate this possibility further, we performed a 5' RACE analysis (see *Materials and Methods*). The results revealed a cluster of 5' ends located at approximately +350, along with those mapping near +1 as expected (unpublished data). We confirmed the 5' RACE results with RPA, using a probe that spanned the putative downstream promoter (Figure 5A). A major protected fragment of the predicted size (50 nt shorter than the P_U -specific product) is seen, confirming the existence of the second transcription start site (Figure 5, B and C). Minor distinct fragments were also seen reproducibly and most likely reflect the heterogeneity of transcription start sites in this region, as suggested by the 5' RACE results. Note that the absolute ratios of the protected major fragments do not directly reflect the relative abundance of transcripts originating from the two promoters, because the longer band represents only a subset of the upstream transcripts as a result of alternative splicing at 5' splice sites 5'ss-a and 5'ss-b (see Figure 1). Any transcripts spliced at 5'ss-a would not be scored by this assay, so the data of Figure 5, B and C, underestimate the relative contributions of the stronger upstream promoter.

The RNAs used for the RPA came from strains that had been either grown at different temperatures in the dark or subjected to a light pulse. In addition to proving the existence of P_D , the assays revealed that the *in vivo* conditions determine the relative use of the transcription start sites. Based on the RPA results, the ratio of upstream (P_U) to downstream (P_D) promoter use decreases with increasing temperature (Figure 5B). The RNAs used for these experiments were isolated at the time of peak expression of *frq* in constant darkness. From these data and others (unpublished data), we estimate that the downstream promoter contributes 5% of the total *frq* population at 18°C and at least 25% of the total at 31°C. As shown in Figure 5C, the ratio of upstream to downstream promoter use increases in response to a light pulse. As in Figure 5B, the ratio as shown on the graph is an underestimate because of the partial representation of P_U activity by U^* . Thus, under all condi-

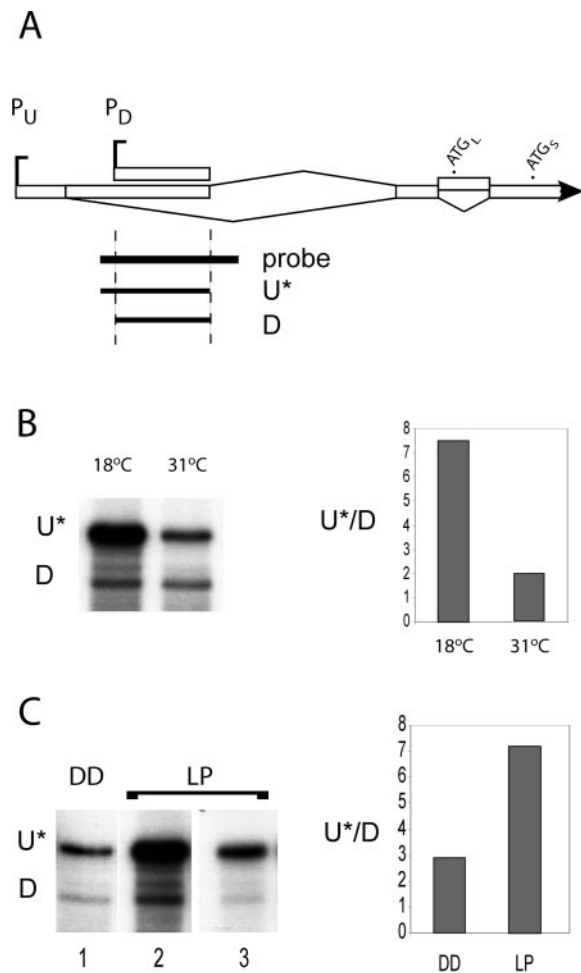


Figure 5. The two major promoters respond differentially to light and temperature. (A) Schematic of the *frq* 5' end showing the probe used for ribonuclease protection assay (RPA) and expected protected products corresponding to transcripts from the two promoters, P_U and P_D . The probe is 455 nt long and would protect fragments of 300 (D, for P_D) and 350 (U^* , for P_U) nt. Note that the U^* fragment represents only a fraction of the transcripts transcribed from the upstream start site P_U , due to alternative splicing (see text). (B) Denaturing gels and quantitation by PhosphorImager of fragments protected in the RPA assay. RNA was made from a wild-type strain grown at the indicated temperatures in DD and collected at DD16 (for 18°C) or DD13 (for 31°C). Total RNA, 30 μ g, was used for both samples. (C) RNA was made from a wild-type strain grown in constant darkness (DD) at 25°C for 22 h and subjected to a 5-min light pulse (LP) followed by 15 min in DD before harvesting. Ten micrograms of the LP sample and 30 μ g of the DD control sample were used in the assay. Lanes 1 and 2 were exposed to the PhosphorImager screen for 3 d; lane 3 was exposed overnight. The quantitation is based on the gels shown, which are representative of four independent replications.

tions, but especially at lower temperatures or upon exposure to light, the use of P_U predominates.

Complex Aspects of the *frq* Transcription Unit Are Phylogenetically Conserved

Previous work from this laboratory has shown that a *frq* homolog cloned from *Sordaria fimicola* could rescue clock function in a *frq* deletion strain, indicating conservation of both the protein and the regulation of the gene's expression

(Merrow and Dunlap, 1994). Comparative sequencing showed considerable conservation in the coding region and relatively less in the noncoding region (5' UTR), though portions of it were seen to have a surprising degree of conservation. In light of the complex environmental regulation of transcript processing that we have uncovered, we undertook a detailed analysis of transcript structure in *Sordaria* to gain more context for interpreting the significance of our findings with *Neurospora frq*. Among the primer pairs used for RT-PCR with *Neurospora*, several were found to work well with *Sordaria* RNA and these were used to characterize the *Sordaria* transcripts.

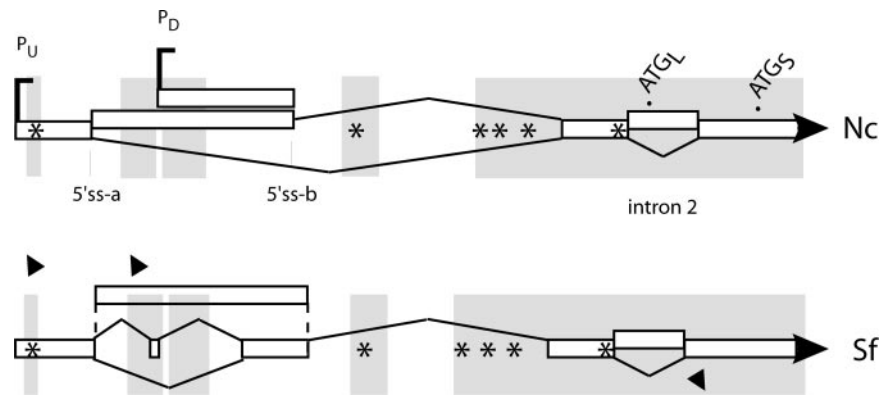
As seen in Figure 6, sequencing of the RT-PCR products reveals that the general features of alternative splicing of both the 5' UTR and intron 2 are conserved. Even though the major 5' splice sites in the 5' UTR do not fall within highly conserved regions, their positions are reasonably well conserved. There is more diversity in the splicing of the *Sordaria* 5' UTR: although with *Neurospora* we find very minor products that use additional sites within the 3' half of the 5' UTR (Figure 6 and Supplementary Figure S1), we have not seen products resembling the more complex pattern found in the 5' half of the *Sordaria* 5' UTR. Splicing of intron 2 was seen in some but not all *Sordaria* RT-PCR products, suggesting that it is regulated in a similar manner to that seen in *Neurospora*. Conserved regions in the 5' UTR are clustered near the transcription start sites identified in the *Neurospora* gene. It is intriguing that the additional conserved regions correspond to the locations of the uORFs; the presence of six uORFs is conserved and the positions of four of them are strictly conserved within the highly similar regions near the 5' end and just upstream of the bona fide coding region (Figure 6 and Supplementary Figure S1).

DISCUSSION

The work presented in this article describes the molecular basis for the temperature-dependent choice between two initiation codons to produce long or short FRQ protein, respectively (Liu *et al.*, 1997). We have discovered a small intron encompassing AUG_L ; this intron is subject to alternative splicing and its retention results in the exclusive use of AUG_L , whereas its removal makes AUG_S the first bona fide start codon. Strains unable to splice this intron fail to produce SFRQ, indicating that leaky scanning makes no significant contribution to the production of SFRQ. Instead, the relative levels of the two alternatively spliced transcripts are thermosensitive and this temperature-modulated splicing underlies the temperature-dependent changes in the FRQ protein population. This choice of FRQ form has significance for the circadian system by extending the temperature range for vigorous rhythmicity, as previously noted (Liu *et al.*, 1997).

Our data may reinforce a consensus regarding the nature of alternatively spliced introns, as well as contributing both a novel biological context and a genetically and molecularly tractable system in which to study this phenomenon. Regulated splicing is sometimes associated with weak consensus sequences such as those seen in intron 2 (Gao *et al.*, 2004; Shin and Manley, 2004). The 3' splice site consensus CAG is embedded in the sequence AGCAGCAGAG (Figure 1B) and may confound the factors responsible for selecting the 3' splice site. The polypyrimidine tract usually found upstream of the 3' splice site is absent. The branchpoint sequence is difficult to pinpoint unequivocally: the consensus for *Neurospora* is CTRAY (where R is a purine and Y is a pyrimidine; Kupfer *et al.*, 2004). The closest match that is also conserved

Figure 6. Schematics of the structures of *Neurospora* and *Sordaria frq* transcripts. The symbols are the same as in Figure 1. The overall length of the region is slightly shorter in *Sordaria*, but RT-PCR analyses followed by sequencing of the products revealed a similar array of alternative splicing events. Primers (shown as filled triangles) were chosen after comparison of the sequences with pairwise BLAST. The regions thus designated as highly conserved are highlighted by the shaded rectangles. (Additional details about the BLAST parameters used, the extent of the conserved regions, and the data supporting the transcript processing pattern, are provided in Supplementary Figure S1.) The positions of four of the six uORFs, shown by asterisks, are strictly conserved (Supplementary Figure S1).



in *Sordaria* is CTTGC, located 16 nt upstream of the 3' splice site CAG (see Figure 1B). If this is indeed the branchpoint sequence used, substitution of G for the almost invariant branchpoint A is striking and suggests that the very minor population of introns with a similarly nonconsensus branchpoint (Kupfer *et al.*, 2004) might also be highly regulated, perhaps by temperature. Efforts are underway to identify introns with similar features and test their splicing efficiencies as a function of temperature.

Organisms like plants and fungi are able to adapt to a wide range of temperatures, and the splicing machinery needs to work well over a broad temperature range. It is not surprising, therefore, that temperature-regulated alternative splicing is relatively rare (Sablowski and Meyerowitz, 1998), with only a few examples described in the literature. It is consistent with this that we have seen no evidence for temperature-dependent splicing in any other alternatively spliced *Neurospora* genes we have analyzed (including NCU2807.1, NCU08380.1, and NCU06702.1; unpublished data), again suggesting that the overall splicing machinery is designed to deliver consistent products across a temperature range. A perhaps noteworthy exception to this is an important thermosensitive splicing event in a circadian context previously noted in *Drosophila*. In pioneering work, Edery and coworkers (Cheng *et al.*, 1998; Majercak *et al.*, 1999) showed that a thermosensitive splicing event in the 3' UTR of *Drosophila per* mRNA is important for advancing the phase of locomotor activity to the daytime on short, cold days. Their work indicates that it is the mere fact of increased splicing in the cold, rather than the identity of the products, that leads to the higher levels and phase advance of *per* mRNA accumulation. They proposed that the enhanced presence of the splicing machinery at the 3' UTR could stimulate 3' end processing, thus increasing *per* mRNA abundance. More recent work has further demonstrated that both clock factors and light influence the splicing event and that phospholipase C plays a role in communicating temperature information to the splicing machinery (Collins *et al.*, 2004; Majercak *et al.*, 2004). Similarly, the *Arabidopsis* homolog of the splicing factor SF2/ASF is itself subject to alternative selection of a 3' splice site in one of its introns, and this choice is under temperature control (Lazar and Goodman, 2000). Several other known instances of splicing changes induced by temperature changes are due to actual mutations. For instance, a single-nucleotide polymorphism in a 5' splice site of the *waxy* gene of rice results in less efficient splicing and a substantial sensitivity to temperature, such that there is more splicing at 18°C than at 25 or 32°C (Larkin and Park, 1999). Similarly, a mutation in a beta-

globin gene creates aberrant splice sites whose use is dependent on temperature (Gemignani *et al.*, 2002).

In addition to providing a molecular basis for the choice of the initiating AUG in *frq*, we have uncovered other details of *frq* transcript structure that are environmentally regulated. The 5' UTR is spliced, and the choice between two major alternative 5' splice sites varies with temperature. There is a minor transcription start site in addition to the major one reported previously; these start sites respond differently to temperature. Alternative initiation of transcription is also regulated by light. It should be noted that transcripts arising from use of the downstream transcription start site would not be shorter than the bulk of the *frq* transcripts (due to splicing of the 5' UTR); therefore, the nature of the shorter transcript observed on Northern blots remains unclear. The general aspects of intron-exon structure, both in the 5' UTR and surrounding AUG_L, are conserved in *Sordaria*, though greater heterogeneity is seen. Although we have previously shown that highly conserved regions of the 5' UTR are interspersed with divergent regions (Morrow and Dunlap, 1994), the expanded analysis reported here allows significance to be assigned to some of the conserved regions and suggests the presence of additional important regulatory features of this region at both the transcriptional and translational levels.

In addition to seasonal temperature differences, organisms are adapted to the daily cycle of temperature fluctuations. The temperature-regulated events we have uncovered would determine the population of transcripts at the pre-dawn temperature minimum in temperate latitudes, such that the clock is poised for a rapid response to light. When light pulses are given to *Neurospora* at different temperatures, the rise in *frq* RNA levels is significantly slower at low than high temperatures (HVC, unpublished results). Thus the specific transcripts available may need to be more efficient for translation. By analogy to the situation in flies, splicing of intron 2 could have this desired effect at least partly by virtue of its occurrence—it could lead to higher RNA levels and to transcripts that are more efficiently translated because they have undergone a second splicing event, in addition to splicing in the 5' UTR. Splicing can lead to enhanced expression because of its stimulatory effect on transcription, RNA export, and translation (Le Hir *et al.*, 2003; Kornblihtt *et al.*, 2004).

We previously reported that strains harboring only the L or S form of FRQ were deficient in clock function at 18 and 30°C, respectively (Liu *et al.*, 1997). In the present work, we did not find as large an effect on full clock function across this temperature range when a mutant *frq* gene unable to

splice intron 2 (thus encoding only LFRQ) was transformed into a *frq*-deletion strain. This construct differs significantly from those used previously in a way that could not have been understood before the splicing events were recognized, and in this light the previous and present results can be rationalized. In previous work, we made mutations in the different AUGs to prevent synthesis of either long or short FRQ. However, the splicing of intron 2 would affect the final productive population of *frq* transcripts; for example, because more than half the transcripts are spliced at intron 2 at the cooler temperature, the effective concentration of translatable transcript would be greatly reduced for the ATG_S-ablated form, because more than half of the RNAs (i.e., the spliced ones) would lack the remaining intact ATG_L and would be untranslatable, leading to much lower levels of protein. We did report different phenotypes for different SFRQ strains, depending on the level of protein seen; i.e., the weakness of the rhythm observed at higher temperatures when only SFRQ is produced is partly abrogated by increasing its level (Liu *et al.*, 1997). It is likely that the overall level of FRQ is at least as important as the S/L ratio for the robustness of the clock and that, as stated previously (Liu *et al.*, 1997; Liu *et al.*, 1998), higher threshold levels of protein are required at higher temperatures.

The location and regulation of the splicing events may shed light on the importance of the uORFs in the *frq* 5' UTR. Specifically, alternative splicing events in the 5' UTR remove five upstream AUGs within four uORFs from all major transcripts. Two AUGs remain; one is present near the 5' end of the subset of transcripts initiated at P_U and the other is in all coding transcripts. The uORF encoded by the latter is just upstream of intron 2, 71 nt away from AUG_L and 183 nt away from AUG_S. In addition, there is a minor heterogeneous population of *frq* mRNAs in which from three to six uORFs are retained (Supplementary Figure S1). uORFs have been implicated in tightly regulated translational control (Luo *et al.*, 1995; Jin *et al.*, 2003). The functional impact of upstream AUGs is thought to depend in part on their distance from the first bona fide AUG (Pesole *et al.*, 2001; Kozak, 2002). Accordingly, *Lfrq* and *Sfrq* may be differentially regulated at the translational level by the retained uORFs, with *Lfrq* being more affected. uORFs can also target transcripts for nonsense-mediated decay (NMD), either as a way to remove improperly spliced transcripts or as a mechanism for quantitative control of gene expression (Wollerton *et al.*, 2004). The presence of six uORF sequences is conserved between *Neurospora* and *Sordaria* (Figure 6 and Supplementary Figure S1), perhaps suggesting their importance in regulating *frq* expression from a subset of transcripts. In transcripts spliced for intron 2, the criteria are met for targeting any uORF-containing transcripts for NMD in that the premature stop codons are more than 55 nt upstream of an intron (Maquat, 2002). Note that the sixth uORF, which is retained in all transcripts, would not perform this function. In any case, although four uORFs are normally spliced out, some functional significance can be assigned to the remaining two, especially the final one that is retained all transcripts: constructs deleting all uORFs but the first (e.g., NG37 and YL15; Garceau, 1996; Liu *et al.*, 1997) show elevated levels of FRQ expression, a result consistent with that recently reported by Diernfellner *et al.* (2005). It should be noted, however, that despite the effects on the levels of FRQ expression and even the complete loss of LFRQ (Liu *et al.*, 1997), these strains have a normally temperature compensated circadian clock.

While this article was in review, similar findings were reported regarding the temperature dependent splicing of

intron 2 (Diernfellner *et al.*, 2005). In that publication, a strain bearing multiple mutations in the 5' splice site, branchpoint region, and 3' splice site of intron 2 (designated intron 6 in that publication) was used to block this splicing, and a temperature compensation defect in this multiply mutant strain was used to infer a role of the splicing in temperature compensation. The strain reported here, HVC16, used just two point mutations to similarly completely abrogate intron 2 splicing (Figure 2). However, this strain has completely normal temperature compensation, strongly suggesting that the temperature-dependent splicing of intron 2 cannot itself play a role in or be important for the temperature compensation mechanism of the clock. Likewise, because this strain does not produce any short FRQ (Figure 2C), the ratio of LFRQ to SFRQ per se cannot be the basis of temperature compensation. This is in agreement with results and conclusions previously reported by Liu *et al.* (1997).

By uncovering temperature-dependent splicing and transcription events that take place with the *frequency* transcript, we have elucidated novel aspects of temperature sensing by the circadian clock in *Neurospora*. Temperature influences circadian clocks in three different ways. First, abrupt changes in ambient temperature are sensed by the clock and are used as time cues to entrain the intracellular circadian clock to external time (Liu *et al.*, 1998). It is likely that the temperature-influenced splicing described here plays a significant role in this temperature sensing, because the level of FRQ expression is known to be highly temperature-dependent (Liu *et al.*, 1997, 1998). Further, we have previously suggested a more general role for the *frq*-based circadian oscillator in temperature sensing by the organism because, in a microarray study using a limited unigene set, strains lacking *frq* no longer showed cycles in gene expression in response to environmental temperature cycles (Nowrousian *et al.*, 2003). A second facet of circadian temperature response is temperature compensation, the mechanism that acts to maintain a relatively constant cycle length across at least part of the physiological range of the organism. Our data suggest that temperature-influenced splicing does not play a role in temperature compensation, because strains making only LFRQ or SFRQ retain compensated clocks (Liu *et al.*, 1997; unpublished data), as do strains that cannot splice intron 2 (Figure 2). We have previously suggested that temperature-influenced changes in the level of FRQ expression might contribute to the third facet of circadian temperature responses, the existence of physiological upper and lower limits for fully functional circadian regulation within the growth range of the organism (Liu *et al.*, 1997). The involvement of alternative splicing in sensing temperature for proper clock function in both this organism and *Drosophila* suggests that this phenomenon may be more generally involved in circadian clocks and in other processes that require temperature information.

ACKNOWLEDGMENTS

We thank Arun Mehra and Norman Garceau for access to unpublished results. This work was supported by the following grants from the National Institutes of Health: R37 GM34985 to J.C.D., MH44651 to J.C.D. and J.J.L. and National Science Foundation Grant MCB-0084509 to J.J.L.

REFERENCES

Aronson, B. D., Johnson, K. A., and Dunlap, J. C. (1994a). Circadian clock locus frequency: protein encoded by a single open reading frame defines period length and temperature compensation. *Proc. Natl. Acad. Sci. USA* 91, 7683–7687.

- Aronson, B. D., Johnson, K. A., Loros, J. J., and Dunlap, J. C. (1994b). Negative feedback defining a circadian clock: autoregulation of the clock gene frequency. *Science* 263, 1578–1584.
- Bell-Pedersen, D., Cassone, V. M., Earnest, D. J., Golden, S. S., Hardin, P. E., Thomas, T. L., and Zoran, M. J. (2005). Circadian rhythms from multiple oscillators: lessons from diverse organisms. *Nat. Rev. Genet.* 6, 544–556.
- Bell-Pedersen, D., Shinohara, M. L., Loros, J. J., and Dunlap, J. C. (1996). Circadian clock-controlled genes isolated from *Neurospora crassa* are late night- to early morning-specific. *Proc. Natl. Acad. Sci. USA* 93, 13096–13101.
- Cheng, P., Yang, Y., Gardner, K. H., and Liu, Y. (2002). PAS domain-mediated WC-1/WC-2 interaction is essential for maintaining the steady-state level of WC-1 and the function of both proteins in circadian clock and light responses of *Neurospora*. *Mol. Cell. Biol.* 22, 517–524.
- Cheng, P., Yang, Y., and Liu, Y. (2001). Interlocked feedback loops contribute to the robustness of the *Neurospora* circadian clock. *Proc. Natl. Acad. Sci. USA* 98, 7408–7413.
- Cheng, Y., Gvakharia, B., and Hardin, P. E. (1998). Two alternatively spliced transcripts from the *Drosophila* period gene rescue rhythms having different molecular and behavioral characteristics. *Mol. Cell. Biol.* 18, 6505–6514.
- Collins, B. H., Rosato, E., and Kyriacou, C. P. (2004). Seasonal behavior in *Drosophila melanogaster* requires the photoreceptors, the circadian clock, and phospholipase C. *Proc. Natl. Acad. Sci. USA* 101, 1945–1950.
- Crosthwaite, S. K., Loros, J. J., and Dunlap, J. C. (1995). Light-induced resetting of a circadian clock is mediated by a rapid increase in frequency transcript. *Cell* 81, 1003–1012.
- Davis, R. L., and deSerres, D. (1970). Genetic and microbiological research techniques for *Neurospora crassa*. *Methods Enzymol.* 27A, 79–143.
- Diernfellner, A. C., Schafmeier, T., Merrow, M. W., and Brunner, M. (2005). Molecular mechanism of temperature sensing by the circadian clock of *Neurospora crassa*. *Genes Dev.* 19, 1968–1973.
- Dunlap, J. C., and Loros, J. J. (2004). The *neurospora* circadian system. *J. Biol. Rhythms* 19, 414–424.
- Dunlap, J. C., Loros, J. J., and Decoursey, P. (2004). Chronobiology: Biological Timekeeping, Sunderland, MA: Sinauer Associates.
- Froehlich, A. C., Liu, Y., Loros, J. J., and Dunlap, J. C. (2002). White Collar-1, a circadian blue light photoreceptor, binding to the frequency promoter. *Science* 297, 815–819.
- Froehlich, A. C., Loros, J. J., and Dunlap, J. C. (2003). Rhythmic binding of a WHITE COLLAR-containing complex to the frequency promoter is inhibited by FREQUENCY. *Proc. Natl. Acad. Sci. USA* 100, 5914–5919.
- Gao, H., Gordon-Kamm, W. J., and Lyznik, L. A. (2004). ASF/SF2-like maize pre-mRNA splicing factors affect splice site utilization and their transcripts are alternatively spliced. *Gene* 339, 25–37.
- Garceau, N. (1996). Identification and Regulation of a Circadian Clock Protein, FRQ, and a Clock-controlled Protein, CCG-1, in *Neurospora crassa*, Hanover, NH: Dartmouth College.
- Garceau, N. Y., Liu, Y., Loros, J. J., and Dunlap, J. C. (1997). Alternative initiation of translation and time-specific phosphorylation yield multiple forms of the essential clock protein FREQUENCY. *Cell* 89, 469–476.
- Gemignani, F., Sazani, P., Morcos, P., and Kole, R. (2002). Temperature-dependent splicing of beta-globin pre-mRNA. *Nucleic Acids Res.* 30, 4592–4598.
- Jin, X., Turcott, E., Englehardt, S., Mize, G. J., and Morris, D. R. (2003). The two upstream open reading frames of oncogene *mdm2* have different translational regulatory properties. *J. Biol. Chem.* 278, 25716–25721.
- Kornblihtt, A. R., de la Mata, M., Fededa, J. P., Munoz, M. J., and Nogues, G. (2004). Multiple links between transcription and splicing. *RNA* 10, 1489–1498.
- Kozak, M. (2002). Pushing the limits of the scanning mechanism for initiation of translation. *Gene* 299, 1–34.
- Kramer, C., Loros, J. J., Dunlap, J. C., and Crosthwaite, S. K. (2003). Role for antisense RNA in regulating circadian clock function in *Neurospora crassa*. *Nature* 421, 948–952.
- Kupfer, D. M., Drabenstot, S. D., Buchanan, K. L., Lai, H., Zhu, H., Dyer, D. W., Roe, B. A., and Murphy, J. W. (2004). Introns and splicing elements of five diverse fungi. *Eukaryot. Cell* 3, 1088–1100.
- Larkin, P. D., and Park, W. D. (1999). Transcript accumulation and utilization of alternate and non-consensus splice sites in rice granule-bound starch synthase are temperature-sensitive and controlled by a single-nucleotide polymorphism. *Plant Mol. Biol.* 40, 719–727.
- Lazar, G., and Goodman, H. M. (2000). The *Arabidopsis* splicing factor SR1 is regulated by alternative splicing. *Plant Mol. Biol.* 42, 571–581.
- Le Hir, H., Nott, A., and Moore, M. J. (2003). How introns influence and enhance eukaryotic gene expression. *Trends Biochem. Sci.* 28, 215–220.
- Lee, K., Loros, J. J., and Dunlap, J. C. (2000). Interconnected feedback loops in the *Neurospora* circadian system. *Science* 289, 107–110.
- Liu, Y. (2003). Molecular mechanisms of entrainment in the *Neurospora* circadian clock. *J. Biol. Rhythms* 18, 195–205.
- Liu, Y., Garceau, N. Y., Loros, J. J., and Dunlap, J. C. (1997). Thermally regulated translational control of FRQ mediates aspects of temperature responses in the *neurospora* circadian clock. *Cell* 89, 477–486.
- Liu, Y., Merrow, M., Loros, J. J., and Dunlap, J. C. (1998). How temperature changes reset a circadian oscillator. *Science* 281, 825–829.
- Luo, Z., Freitag, M., and Sachs, M. S. (1995). Translational regulation in response to changes in amino acid availability in *Neurospora crassa*. *Mol. Cell. Biol.* 15, 5235–5245.
- Majercak, J., Chen, W. F., and Edery, I. (2004). Splicing of the period gene 3'-terminal intron is regulated by light, circadian clock factors, and phospholipase C. *Mol. Cell. Biol.* 24, 3359–3372.
- Majercak, J., Sidote, D., Hardin, P. E., and Edery, I. (1999). How a circadian clock adapts to seasonal decreases in temperature and day length. *Neuron* 24, 219–230.
- Maquat, L. E. (2002). Nonsense-mediated mRNA decay. *Curr. Biol.* 12, R196–R197.
- Merrow, M. W., and Dunlap, J. C. (1994). Intergeneric complementation of a circadian rhythmicity defect: phylogenetic conservation of structure and function of the clock gene frequency. *EMBO J.* 13, 2257–2266.
- Merrow, M. W., Garceau, N. Y., and Dunlap, J. C. (1997). Dissection of a circadian oscillation into discrete domains. *Proc. Natl. Acad. Sci. USA* 94, 3877–3882.
- Nowrousian, M., Duffield, G. E., Loros, J. J., and Dunlap, J. C. (2003). The frequency gene is required for temperature-dependent regulation of many clock-controlled genes in *Neurospora crassa*. *Genetics* 164, 923–933.
- Pesole, G., Mignone, F., Gissi, C., Grillo, G., Licciulli, F., and Liuni, S. (2001). Structural and functional features of eukaryotic mRNA untranslated regions. *Gene* 276, 73–81.
- Roenneberg, T., and Taylor, W. (2000). Automated recordings of bioluminescence with special reference to the analysis of circadian rhythms. *Methods Enzymol.* 305, 104–119.
- Sablowski, R. W., and Meyerowitz, E. M. (1998). Temperature-sensitive splicing in the floral homeotic mutant *apetala3-1*. *Plant Cell* 10, 1453–1463.
- Schafmeier, T., Haase, A., Kaldi, K., Scholz, J., Fuchs, M., and Brunner, M. (2005). Transcriptional feedback of *neurospora* circadian clock gene by phosphorylation-dependent inactivation of its transcription factor. *Cell* 122, 235–246.
- Shin, C., and Manley, J. L. (2004). Cell signalling and the control of pre-mRNA splicing. *Nat. Rev. Mol. Cell. Biol.* 5, 727–738.
- Staiger, D., Zecca, L., Wiczorek, K., Kirk, D. A., Apel, K., and Eckstein, L. (2003). The circadian clock regulated RNA-binding protein AtGRP7 autoregulates its expression by influencing alternative splicing of its own pre-mRNA. *Plant J.* 33, 361–371.
- Wollerton, M. C., Gooding, C., Wagner, E. J., Garcia-Blanco, M. A., and Smith, C. W. (2004). Autoregulation of polypyrimidine tract binding protein by alternative splicing leading to nonsense-mediated decay. *Mol. Cell* 13, 91–100.