

Research article

Open Access

Reduced hippocampal activation during episodic encoding in middle-aged individuals at genetic risk of Alzheimer's Disease: a cross-sectional study

Mehul A Trivedi^{1,2}, Taylor W Schmitz^{1,2}, Michele L Ries^{1,2},
Britta M Torgerson^{1,2}, Mark A Sager², Bruce P Hermann³, Sanjay Asthana^{1,2}
and Sterling C Johnson*^{1,2}

Address: ¹Geriatric Research Education and Clinical Center, William S. Middleton Veteran's Affairs Hospital, Madison, WI, USA, ²Department of Medicine, University of Wisconsin Medical School, Madison, WI, USA and ³Department of Neurology, University of Wisconsin Medical School, Madison, WI, USA

Email: Mehul A Trivedi - mt2@medicine.wisc.edu; Taylor W Schmitz - tws@medicine.wisc.edu; Michele L Ries - mlr@medicine.wisc.edu; Britta M Torgerson - bmt@medicine.wisc.edu; Mark A Sager - masager@facstaff.wisc.edu; Bruce P Hermann - hermann@neurology.wisc.edu; Sanjay Asthana - sa@medicine.wisc.edu; Sterling C Johnson* - scj@medicine.wisc.edu

* Corresponding author

Published: 13 January 2006

Received: 27 April 2005

BMC Medicine 2006, 4:1 doi:10.1186/1741-7015-4-1

Accepted: 13 January 2006

This article is available from: <http://www.biomedcentral.com/1741-7015/4/1>

© 2006 Trivedi et al; licensee BioMed Central Ltd.

This is an Open Access article distributed under the terms of the Creative Commons Attribution License (<http://creativecommons.org/licenses/by/2.0>), which permits unrestricted use, distribution, and reproduction in any medium, provided the original work is properly cited.

Abstract

Background: The presence of the apolipoprotein E (APOE) $\epsilon 4$ allele is a major risk factor for the development of Alzheimer's disease (AD), and has been associated with metabolic brain changes several years before the onset of typical AD symptoms. Functional MRI (fMRI) is a brain imaging technique that has been used to demonstrate hippocampal activation during measurement of episodic encoding, but the effect of the $\epsilon 4$ allele on hippocampal activation has not been firmly established.

Methods: The present study examined the effects of APOE genotype on brain activation patterns in the medial temporal lobe (MTL) during an episodic encoding task using a well-characterized novel item versus familiar item contrast in cognitively normal, middle-aged (mean = 54 years) individuals who had at least one parent with AD.

Results: We found that $\epsilon 3/4$ heterozygotes displayed reduced activation in the hippocampus and MTL compared to $\epsilon 3/3$ homozygotes. There were no significant differences between the groups in age, education or neuropsychological functioning, suggesting that the altered brain activation seen in $\epsilon 3/4$ heterozygotes was not associated with impaired cognitive function. We also found that participants' ability to encode information on a neuropsychological measure of learning was associated with greater activation in the anterior MTL in the $\epsilon 3/3$ homozygotes, but not in the $\epsilon 3/4$ heterozygotes.

Conclusion: Together with previous studies reporting reduced glucose metabolism and AD-related neuropathology, this study provides convergent validity for the idea that the MTL exhibits functional decline associated with the APOE $\epsilon 4$ allele. Importantly, these changes were detected in the absence of meaningful neuropsychological differences between the groups. A focus of ongoing work in this laboratory is to determine if these findings are predictive of subsequent cognitive decline.

Background

Family history of dementia and the apolipoprotein E (APOE) genotype are significant risk factors for the development of Alzheimer's disease (AD). The APOE gene, found on chromosome 19, has three allele variants (i.e., $\epsilon 2$, $\epsilon 3$ and $\epsilon 4$) and six possible genotypes, with the $\epsilon 3/3$ genotype being most prevalent in the general population (but see [1,2]). The presence of the $\epsilon 4$ allele significantly increases the risk and reduces the age of onset in people with the late-onset form of AD, the most common form of this disorder [1,3,4]. Previous studies have reported estimated cumulative lifetime risk percentages based on APOE genotype in individuals with a family-history of AD to be 30%, 46% and 61% for $\epsilon 3/3$ homozygotes, $\epsilon 3/4$ heterozygotes and $\epsilon 4/4$ homozygotes, respectively [5].

Impairment in the encoding and retrieval of episodic memories, presumably caused by neurodegeneration of the hippocampus and other medial temporal lobe (MTL) structures [6,7], is one of the earliest symptoms in AD [8]. Recent evidence suggests that healthy $\epsilon 4$ carriers (mean age = 56 years) with a family history of AD show a greater longitudinal, age-related episodic memory decline than non-carriers [9-11]. Furthermore, some structural MRI studies have found reduced hippocampal volume in older cognitively normal $\epsilon 4$ carriers [12-16] (but see [17-19]). Taken together, these results suggest that there may be an age-related phenotype for $\epsilon 4$ carriers involving cognitive decline and brain atrophy prior to the onset of AD. An important question is how early these changes occur and whether they can be detected *in vivo* using existing functional imaging methods.

The use of neuropsychological measures and brain imaging to examine cognitively normal individuals with AD risk factors such as family history or APOE genotype could potentially yield valuable information about preclinical alterations in neural function that precede the symptomatic stages of AD. Functional MRI (fMRI) is a non-invasive brain imaging technique that has been used successfully to demonstrate hippocampal and MTL activation during several tasks thought to reflect aspects of episodic memory [20-25]. The few studies that have examined brain activation differences between $\epsilon 4$ carriers and non-carriers have reported inconsistent findings on measures of episodic memory.

One episodic encoding paradigm that has been used to demonstrate robust hippocampal activation is novelty detection, in which individuals discriminate between events that were previously learned from events that are novel [26-31] (see [32,33] for reviews). Tulving and Kroll [34] have suggested that episodic encoding processes are more evident during the processing of novel information versus previously learned (or familiar) information.

Therefore, novelty detection appears to be an important cognitive process involved in MTL-dependent episodic memory formation. Novel/familiar discrimination paradigms might therefore yield valuable information about functional changes in the MTL that precede overt changes in cognitive function in individuals at risk of AD.

The purpose of the present study was to use fMRI to test the hypothesis that cognitively normal $\epsilon 3/4$ heterozygotes with a family history of AD would display reduced activation in the hippocampus during a novel picture-encoding paradigm. We also used voxel-based morphometry (VBM) of T1 weighted images to determine whether any observed differences in fMRI activation between the groups were the result of differences in modulated GM volume. In addition, we compared hippocampal activation against a neuropsychological measure of episodic learning ability. Because prior research has shown that brain changes precede cognitive changes in this population, and because carriers of the $\epsilon 4$ allele may have altered hippocampal function, we hypothesized that there would be less systematic shared variance, disrupting the normal relationship between MTL activation and neuropsychological status in the $\epsilon 3/4$ heterozygotes as compared to $\epsilon 3/3$ homozygotes.

Methods

Subjects

Subjects who enrolled in this fMRI study were grouped by APOE genotype. The statistical analyses included 23 $\epsilon 3/4$ heterozygotes and 17 $\epsilon 3/3$ homozygotes. All participants in the study were recruited from the Wisconsin Registry for Alzheimer's Prevention (WRAP) [35], a longitudinal study designed to identify and evaluate factors that may delay or prevent the onset of AD. This cohort includes cognitively normal adult subjects (total N > 350 participants at the time of enrollment) between the ages of 40 and 65 with at least one biological parent who was diagnosed with AD by physicians affiliated with the Memory Clinics at the University of Wisconsin – Madison. The initial clinical diagnosis of AD in the parent was confirmed using published DSM-IV and NINDS-ADRDA criteria by a diagnostic consensus panel of experienced physicians and neuropsychologists. The adult children of these AD patients were then approached to participate in the WRAP study. The self-reported mean age at onset of memory problems in the parent diagnosed with AD was reported by the children to be 73 years old (range = 55 – 89 years).

All subjects in the WRAP underwent baseline medical laboratory tests, which included measurements of total non-fasting blood cholesterol, blood pressure, homocysteine, hemoglobin and hematocrit levels, and APOE genotyping. All participants also received detailed neuropsychological evaluations and baseline medical screening that

included documentation of current medication usage. An important characteristic of this cohort is that 46% have at least one copy of the $\epsilon 4$ allele [35], compared to approximately 15% in the general population [2,36]. The battery of neuropsychological tests included the following: Wechsler Abbreviated Scale of Intelligence (WASI) verbal and performance IQ indexes [37], Wechsler Adult Intelligence Scale-III (WAIS-III) working memory index [38], the Controlled Oral Word Association Test (COWAT) [39], Rey Auditory Verbal Learning Test (RAVLT) [40], Boston Naming Test (BNT) [41], Trail Making Test A and B [40,42], and the Center for Epidemiological Studies Depression Inventory (CES-D) [43].

WRAP subjects were invited to participate in this fMRI study by direct mailings and newsletters. Subjects expressing interest in participating were contacted by phone and screened to determine if they met study eligibility requirements. The inclusion criteria consisted of the following: no current diagnosis of major psychiatric disease or other major medical conditions (e.g. diabetes, myocardial infarction or recent history of cancer), intact cognitive functions, and MRI scanner compatibility. Of the subjects included in this study, 55% had elevated (> 200 mg/dl) non-fasting total blood cholesterol (10 subjects in the $\epsilon 3/3$ group and 12 in the $\epsilon 3/4$ group) and 23% had elevated (> 140 mmHg) systolic blood pressure (5 subjects in the $\epsilon 3/3$ group and 4 in the $\epsilon 3/4$ group). There were no subjects in either group with high levels of homocysteine (> 14 $\mu\text{mol/l}$). Several participants were also taking a variety of medications, 4 subjects were using cholesterol-lowering medications (2 in the $\epsilon 3/3$ group and 2 in the $\epsilon 3/4$ group), 8 female subjects were current users of estrogen replacement therapy (5 in the $\epsilon 3/4$ group and 3 in the $\epsilon 3/3$ group), and 6 subjects were using selective serotonin reuptake inhibitors (5 in the $\epsilon 3/4$ group and 1 in the $\epsilon 3/3$ group).

Subjects included in the overall statistical analysis were required to have useable imaging data (movement in the x, y and z planes < 3 mm) and at least 90% accuracy on the fMRI memory task. We restricted our analyses to subjects with a homozygous $\epsilon 3/3$ or heterozygous $\epsilon 3/4$ APOE genotype to reduce the potential genetic variability in brain activation patterns, and because there was an insufficient number of individuals with other APOE genotypes (e.g. $\epsilon 4/4$ homozygotes or $\epsilon 2/3$ heterozygotes) to make meaningful inferences regarding other APOE genotypes. The data from 6 additional subjects (3 $\epsilon 3/3$ homozygotes and 3 $\epsilon 3/4$ heterozygotes) were excluded from the overall statistical analyses: 1 subject for excessive motion during scanning, 1 subject for scanner error, 3 subjects who did not achieve 90% accuracy on the fMRI task, and 1 subject who had a previously undiagnosed tumor. The final number of subjects included in the statistical analysis was

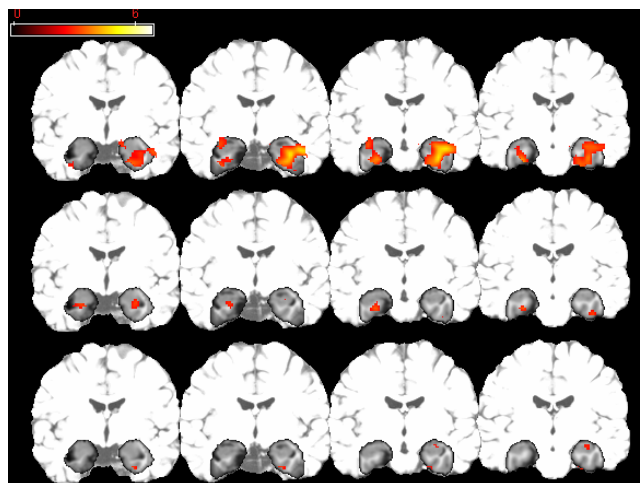


Figure 1
Activation Maps for fMRI task. Statistical parametric maps of the single-group analyses for $\epsilon 3/3$ homozygotes (panel A) and $\epsilon 3/4$ heterozygotes (panel B), and for regions where the $\epsilon 3/3$ homozygotes activated to a greater extent than the $\epsilon 3/4$ heterozygotes (panel C). The left side of each coronal section represents the left hemisphere. The dark-shaded area represents the MTL region to which the statistical analyses were confined. The lighter-shaded areas represent regions outside of the MTL mask.

40 (23 $\epsilon 3/4$ heterozygotes and 17 $\epsilon 3/3$ homozygotes). Athena Diagnostics (Worcester, MA) conducted APOE genotyping for all subjects using their patented procedures.

fMRI task

Blood oxygen level dependent (BOLD) signal was detected using a variant of a well-known fMRI paradigm in which participants distinguished between novel and previously learned items. This paradigm is well-suited to examining potential differences in hippocampal activation based on APOE genotype because several previous PET and fMRI studies have demonstrated robust hippocampal activation for novel relative to familiar contrasts. The task consisted of serial presentations of line drawings obtained from the Snodgrass and Vanderwart [44] set that were matched for complexity and frequency. The previously learned pictures were presented in a training session 45 minutes prior to the task, and again during scanner setup 15 minutes prior to the task. The items were presented repeatedly in pseudorandom fashion for 15 exposures in each of the two training trials for a total of 30 exposures to each item. The participants were instructed to view the pictures and try to remember them.

During the fMRI test session, pictures were presented continuously at 3 s intervals for the entire experiment. For each picture, the participant decided whether the picture

Table 1: Demographic, neuropsychological and fMRI task performance data

	ε3/ε3 (n = 17)	ε3/ε4 (n = 23)
Age (years)	52.1 (6.8)	54.0 (5.6)
Age Range (years)	42 – 65	43 – 65
Education (years)	15.9 (2.1)	16.5 (2.6)
Gender Ratio: Female/Male	11/6	13/10
Handedness (% righthanded)	94%	96%
Homocysteine (μmol/l)	8.2 (1.8)	7.9 (1.5)
Blood Cholesterol (mg/dl) ¹	215.8 (32.6)	204.9 (31.4)
Hematocrit (mL/dl)	40.0 (2.1)	40.6 (2.6)
Hemoglobin (g/dl)	13.8 (0.8)	13.9 (0.9)
Systolic Blood Pressure (mmHg)	131.5 (14.1)	132.6 (17.8)
WASI Verbal IQ	112.8 (8.6)	113.6 (10.5)
WASI Performance IQ	114.0 (8.4)	111.9 (8.5)
WAIS-III Working Memory	109.5 (14.5)	104.4 (13.5)
COWAT adjusted raw score	42.8 (10.9)	47.1 (10.0)
Boston Naming Test	56.6 (2.7)	56.6 (1.8)
RAVLT total recall trials 1–5	54.0 (5.2)	52.1 (7.5)
RAVLT short delay recall	11.6 (2.6)	11.0 (2.1)
RAVLT long delay recall	11.7 (2.3)	10.7 (2.9)
RAVLT recognition	14.1 (1.2)	14.0 (1.4)
Trail Making Test A (s)	27.1 (6.0)	27.0 (8.1)
Trail Making Test B (s)	55.4 (19.7)	67.0 (22.3)*
CES-D	4.2 (4.4)	4.1 (4.2)
Snodgrass Accuracy (%)	99.1 (1.2)	98.6 (2.2)
Snodgrass RT (sec)	0.81 (0.2)	0.89 (0.1)
Snodgrass Misses	0.3 (0.8)	0.7 (1.6)

Data are presented as mean (SD). * denotes significant differences ($p < 0.05$) between the groups. WASI = Wechsler Abbreviated Scale of Intelligence, WAIS = Wechsler Adult Intelligence Scale, COWAT = Controlled Oral Word Fluency Test, RAVLT = Rey Auditory Verbal Learning Test, CES-D = Center for Epidemiological Studies – Depression Inventory. See text for further discussion of test measures. ¹ = total non-fasting Blood Cholesterol

was previously learned or novel. Each picture was presented for 2800 ms with a 200 ms interstimulus interval. The novel pictures (condition 1) were intermixed with the presentation of previously learned pictures (condition 2) using a variable-length block (boxcar) paradigm. There were no periods of rest or fixation during the entire test session. Epoch length was variable, but appropriately balanced between conditions and ranged from single events to 5 consecutive items. The order of condition presentation and length were pseudorandom. Variable-length epochs rather than a fully event-related approach were used to reduce the condition predictability while maintaining some of the statistical power of the boxcar paradigm [45,46]. Two alternate forms of the task were presented (order counterbalanced), using the same previously learned items but different novel items. The duration of the entire task was 9 minutes and 24 seconds. Responses to the novel and previously learned pictures were made with a two-button response device held in the right hand. The index finger was used to identify previously learned pictures, whereas the middle finger was used to identify novel pictures. As in previous studies [see

also [31]], we referred to encoding as the contrast of novel relative to familiar pictures.

Imaging procedures

A GE 3.0 Tesla MRI scanner outfitted with an MR-compatible button-box and high-resolution goggles set at 800 × 600 (Resonance Technology; Northridge, CA) were used for fMRI imaging and stimulus presentation. Foam padding was placed around the head to reduce head motion. The software Presentation <http://www.neuro-bs.com> was used to deliver visual stimuli and record responses in precise synchrony with slice acquisition and stimulus delivery. A T2*-weighted gradient-echo, echo-planar image (EPI) pulse sequence was obtained with higher order shimming during the functional trials for each subject.

The EPI parameters included: echo time flip angle = 90°; acquisition matrix = 64 × 64 voxels; field of view (FOV) = 240 mm; echo time (TE) = 30 ms; repetition time (TR) = 2000 ms. Thirty sagittal slices of the brain were acquired within the TR at each time point, with a voxel resolution of 3.75 × 3.75 × 4 mm and a 1-mm skip between slices.

Table 2: Montreal Neurological Institute (MNI) Coordinates for peak activation differences ($p < 0.01$; uncorrected) for the random-effects group analysis between $\epsilon 3/4$ heterozygotes and $\epsilon 3/3$ homozygotes for the functional MRI encoding contrast of novel versus familiar pictures. k = cluster size

Contrast	Region (k)	Montreal Neurological Institute (MNI) coordinates			Peak t value	P (uncorrected)
		x	y	z		
Novel vs. Familiar $\epsilon 3/3 > \epsilon 3/4$	Right anterior entorhinal cortex (60)	22	2	-34	3.56	0.001
	- Right parahippocampal gyrus	22	-8	-34	2.99	0.002
	Right hippocampus (93)	30	-14	-16	3.01	0.002
	- Right hippocampus	36	-24	-6	2.99	0.003

Over the entire test session, a total of 141 time points were collected. Three images acquired during the first 6 seconds of each scanning run were discarded. Following the functional scans, an axial T1-weighted inversion recovery prepared volume (124 slices; 1.2 mm thick; FOV 240 mm; matrix 256×256), and fast recovery fast spin echo T2 weighted anatomic images (TE 90 ms; 70 slices; 1.7 mm thick; 0.3 mm skip; FOV 240; matrix 256×256) were acquired. The images were later reviewed by a neuroradiologist for the presence of brain abnormalities that might exclude subjects from the statistical analyses. The T1 weighted images were also used for the VBM analysis.

Functional image processing

The time series images were motion-corrected to reduce the effects of head movement during the scan session. 3 D field maps across the brain taken co-planar with the fMRI slices were used to correct distortions in the image files by measuring the phase of non-EPI gradient echo images at two echo times (7 and 10 ms). The continuous B field map was estimated using a 3 D phase-unwrapping algorithm based on Jenkinson et al. [47]. Image unwrapping was performed using a nonlinear pixel shifting and B splines interpolation algorithm. The images were then normalized into standard atlas space (using the T2* weighted template from SPM2), written out at a $2 \times 2 \times 2$ voxel resolution, and then smoothed with an 8 mm full-width, half-maximum Gaussian kernel.

Data analysis

Analyses of the time-series data were performed using the General Linear Model using the Statistical Parametric Mapping (SPM2) statistical software [48]. For each participant, the time-series statistical model included convolution with the canonical hemodynamic response function and a high frequency signal filtering (high pass filter = 128 seconds). Temporal autocorrelation was estimated using the first-order autoregressive (AR1) method on suprathreshold voxels. This method estimates the actual autocorrelation from the fMRI time series rather than imposing a

generic temporal smoothing filter (see [49] for further discussion).

The primary contrast used to evaluate group differences was novel versus familiar pictures. For completeness, we also examined group differences in activation for the familiar versus novel contrast. All single-subject analyses for both contrasts were computed for each participant and entered into a random effects group analysis. Each of the single-subject analyses was completed in the same semi-automated fashion regardless of APOE genotype. The random-effects group analysis and the correlational analyses were constrained to the right and left MTL, with an anatomical mask described previously by Johnson et al. [50]. The mask extended from the anterior aspect of the amygdala to the posterior aspect of the tail of the hippocampus, and also included the fusiform and parahippocampal gyri (See Figure 1). All possible voxels within each hemisphere of the MTL mask were considered potential dependent variables. The mask was used to impose more stringent hypothesis-driven restrictions on the number of simultaneous comparisons. Uncorrected p-values were used for this restricted region of interest (ROI) approach. In a second step, we conducted whole brain between-group analyses for both contrasts ($p < 0.05$; False Discovery Rate corrected for multiple comparisons) (see [51]).

Voxel-based Morphometry processing steps

The detailed processing methodology for VBM has previously been reported in detail. Briefly, we used the optimized VBM approach described by Good et al. [52] (see also [53,54]) using SPM2. This procedure involves segmentation of the images into gray matter (GM), white matter (WM) and cerebrospinal fluid (CSF), and normalization of the GM images to the GM template in standard space. The GM images were then modulated using the Jacobian values derived from spatial normalization and smoothed with a 12 mm isotropic Gaussian kernel. The smoothed GM images were then entered into a random-effects two-sample t-test in SPM2 to examine GM volume differences between the groups.

Results

Neuropsychological functioning and fMRI task performance

The mean scores and standard deviations for the demographic and laboratory test variables and neuropsychological test performance are presented in Table 1. Between-group differences were examined using two-sample t-tests with a Bonferroni-corrected alpha level set at $p < 0.002$ (i.e., $p < 0.05$ divided by 22 comparisons). There were no significant differences between the groups in respect of age, education, laboratory test results or fMRI task performance. Both groups achieved at least 98% accuracy on the fMRI memory task and there were no differences in reaction times. Furthermore, there were no significant differences between the groups in terms of neuropsychological functioning or subjective memory complaints. The two-sample t-tests for each neuropsychological measure revealed no significant differences between the two groups for any of the neuropsychological test measures at the corrected threshold of $p < 0.002$. However, $\epsilon 3/4$ heterozygotes took longer to complete Trail Making Test B than $\epsilon 3/3$ homozygotes, but this finding was only significant using an uncorrected threshold of $p < 0.05$, whereas no significant differences between the groups were found for any of the other test measures. The performances of both groups on Trail Making Test B were within the normal range based on age-matched normative data from Spreen and Strauss (1998), as was performance on the rest of the neuropsychological test battery.

A follow-up analysis that included all WRAP subjects that were $\epsilon 3/3$ homozygotes ($n = 154$) and $\epsilon 3/4$ heterozygotes ($n = 142$), including those who did not participate in the fMRI study, revealed no significant difference on Trails Making Test B or any of the other neuropsychological measures. Therefore, the significantly slower time to complete Trails B in the $\epsilon 3/4$ heterozygotes who participated in the fMRI study does not appear to generalize to the WRAP cohort overall, and does not appear to be a general effect of the APOE $\epsilon 4$ allele.

Imaging results

Figure 1 depicts MTL activation for the novel versus familiar contrast in the $\epsilon 3/3$ homozygotes and $\epsilon 3/4$ heterozygotes separately. The $\epsilon 3/3$ homozygotes show a greater level of activation for the novel versus familiar contrast in the MTL including the hippocampus compared to the $\epsilon 3/4$ heterozygotes.

The single group analyses provide a qualitative description of differences in MTL activation between $\epsilon 3/4$ heterozygotes and $\epsilon 3/3$ homozygotes. To determine whether there were significant differences between the groups, a random-effects 2-group t-test (with age as a covariate) for the novel versus familiar contrast was performed in the

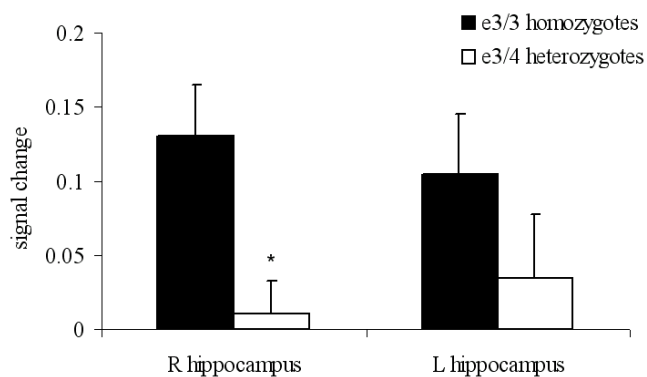


Figure 2
Graph of signal change in the MTL. Plot of the signal change (adjusted fitted responses) for $\epsilon 3/3$ homozygotes and $\epsilon 3/4$ heterozygotes averaged over a 2 mm radius spherical ROI at the local maxima in the right hippocampus ($x, y, z: 30, -14, -16$), and at the same location in the left hippocampus ($x, y, z: -30, -14, -16$). Data are presented as mean signal change for each group. Error bars represent the standard error of the mean. * denotes significant difference between the two groups.

MTL ROI. There was a significant main effect of APOE genotype ($x, y, z: 30, -14, -16; t = 3.01, p = 0.002$, uncorrected) with $\epsilon 3/4$ heterozygotes showing less activation for the novel versus familiar pictures contrast in the MTL than the $\epsilon 3/3$ homozygotes (see Figure 1). A plot of the mean signal change averaged over a 2 mm radius sphere in the hippocampus depicts the group difference ($x, y, z: 30, -14, -16$; see Figure 2). For completeness, we extracted mean signal change at the same location in the left hippocampus, and the $\epsilon 3/3$ homozygotes displayed numerically but not significantly ($p > 0.25$) greater signal change in the left hippocampus as well (see Figure 2). Table 2 provides statistics, locations and cluster size for all significantly activated regions for the genotype effect. There were no significant differences in MTL activation for the contrast of familiar relative to novel pictures.

The whole brain analyses for the novel vs familiar and familiar vs novel contrasts ($p < 0.05$; FDR corrected for multiple comparisons) revealed no significant differences between the groups for either contrast. In order to examine potential compensatory activity in the cortical regions of $\epsilon 3/4$ heterozygotes, we conducted a follow-up analysis ($p < 0.01$, uncorrected) using a two-sample t-test in which the analysis was constrained to include only those regions that were active for each contrast (i.e. novel versus familiar or familiar versus novel) collapsed across all 40 subjects (i.e. a one-sample t-test). In addition to reduced MTL activation, the $\epsilon 3/4$ heterozygotes also displayed reduced activation compared to the $\epsilon 3/3$ homozygotes for the novel versus familiar contrast in the right ventral temporal cor-

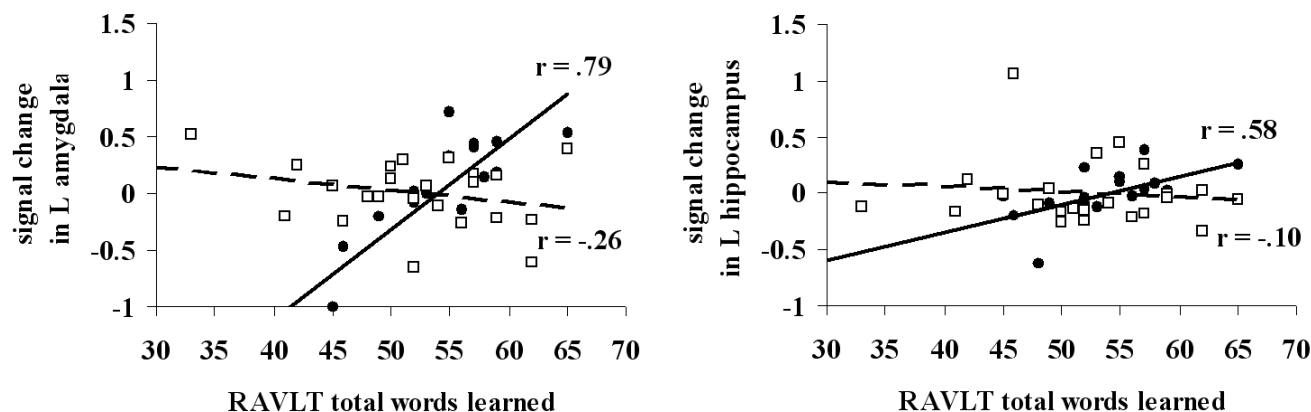


Figure 3

RAVLT versus Signal Change. Scatter plot of the association between total words learned on the RAVLT and signal change within the left amygdala (left panel) and left anterior hippocampus (right panel) for $\epsilon 3/3$ homozygotes (black circles, solid lines) and $\epsilon 3/4$ heterozygotes (white squares, hashed lines).

tex and left parietal cortex. Importantly, the $\epsilon 3/4$ heterozygotes did not display greater activation compared to the $\epsilon 3/3$ homozygotes in any brain region even at the uncorrected threshold of $p < 0.01$. There were no differences between the groups for the familiar versus novel contrast.

To determine whether the significantly greater MTL activation displayed by the $\epsilon 3/3$ homozygotes relative to the $\epsilon 3/4$ heterozygotes was attributable to differential MTL atrophy, we used VBM analysis [53] of the T1 weighted scans restricted to the MTL anatomical mask in these same participants. This analysis revealed no significant differences in modulated GM volume between the $\epsilon 3/3$ homozygotes and $\epsilon 3/4$ heterozygotes even at a threshold of $p < 0.05$, uncorrected. The absence of differential MTL atrophy indicates that the observed differences in fMRI activation were not attributable to GM volume differences in this group of subjects.

Relationship between RAVLT and MTL activation

We also examined whether the total number of words learned on the RAVLT was associated with fMRI activation in the MTL for the novel relative to previously learned pictures contrast in $\epsilon 3/4$ heterozygotes and $\epsilon 3/3$ homozygotes. Since RAVLT variables are highly correlated, we chose to use total words recalled on the RAVLT because this measure has previously been shown to be sensitive to the preclinical detection of early AD [55]. These analyses revealed that total words learned on the RAVLT was positively associated (see Figure 3) with increased activation in the left anterior hippocampus ($x, y, z: -28, -6, -26; r = 0.58; p < 0.01$), and the left amygdala ($x, y, z: -38, 4, -26; r = 0.78; p < 0.0001$) in the $\epsilon 3/3$ homozygotes, but was not significantly associated with activation in the MTL in $\epsilon 3/4$ heterozygotes (r values = -0.26 and -0.10 for left amygdala

and hippocampus, respectively). Furthermore, the magnitude of the correlations was significantly different between the two groups for both the left amygdala ($p < 0.0001$) and hippocampus ($p = 0.01$). In contrast, RAVLT total word recall was associated with activation in the left ($x, y, z: -12, -38, 12; r = 0.65, p < 0.0001$) and right ($x, y, z: 4, -40, 4; r = 0.65, p < 0.0001$) isthmus of the cingulate cortex in $\epsilon 3/4$ heterozygotes.

For completeness, we also determined the association between RAVLT total word recall and signal at the same coordinates in the right amygdala and hippocampus. These analyses failed to reveal a significant correlation between RAVLT total word recall and signal change in the right amygdala or hippocampus of the $\epsilon 3/3$ homozygotes (r values = 0.03 and 0.11 for the right amygdala and hippocampus, respectively) or the $\epsilon 3/4$ heterozygotes (r values = 0.19 and 0.11 , for the right amygdala and hippocampus, respectively).

Discussion

The present study examined the effects of APOE genotype on brain activation patterns in the MTL during an episodic encoding task in cognitively normal individuals with a family history of AD who were on average 15–20 years younger than the age at which AD symptoms typically develop. We found that $\epsilon 3/4$ heterozygotes displayed reduced fMRI activation compared to $\epsilon 3/3$ homozygotes in the right hippocampus and entorhinal cortex for the contrast of novel relative to familiar pictures. Importantly, there were no fMRI activation differences between the groups for the reverse contrast (i.e. familiar relative to novel), suggesting that the reduced activation found in the right hippocampus and MTL of $\epsilon 3/4$ heterozygotes was not caused by greater fMRI activation to the previously

learned items in the $\epsilon 3/4$ heterozygotes, at least when measured relative to novel items. In subsequent whole-brain analyses, no brain regions were found to display greater activity in the $\epsilon 3/4$ heterozygotes than in the $\epsilon 3/3$ homozygotes for either contrast.

There were also no significant differences between the groups in age, education or memory function, and neuropsychological performance was within the normal range for both groups. This suggests that the reduced MTL activation to novel items (relative to familiar items) in $\epsilon 3/4$ heterozygotes was not caused by impaired cognitive function, and that the observed neurobiological changes in MTL function precede the onset of measurable decline in cognitive function.

We also found no evidence for differences in regional GM volume as measured by VBM, suggesting that the observed activation differences were not caused by reduced MTL GM volume in our cohort of middle-aged subjects. Previous volumetric studies have reported inconsistent findings regarding the effects of the $\epsilon 4$ allele on regional brain volume. Reiman et al. [56] reported nonsignificant trends towards smaller left and right hippocampal volumes in $\epsilon 4/4$ homozygotes (mean age = 58 years), and smaller hippocampal volumes were associated with reduced long-term memory ability. Den Heijer et al. [13] found that elderly $\epsilon 4$ carriers (mean age = 72 years) displayed significantly greater hippocampal and amygdalar atrophy and poorer memory ability relative to $\epsilon 3/3$ homozygotes. Mofat et al. [15] found that older $\epsilon 4$ carriers (mean age = 69 years) displayed a significantly greater rate of hippocampal volume loss over a 3-year follow-up period, although $\epsilon 4$ carriers were also found to display mild decline in memory ability over the same time frame. In a recent large-scale ($N = 750$) VBM study, Lemaitre et al. [14] found significantly reduced MTL (including hippocampus) volume in elderly (age range 63–75 years) $\epsilon 4/4$ homozygotes compared to both $\epsilon 3/4$ heterozygotes and non-carriers, whereas no significant differences were found between the $\epsilon 3/4$ heterozygotes and the non-carriers. Furthermore, these authors also found that the relative risk of cognitive impairment over a 4-year follow-up period was substantially greater in $\epsilon 4/4$ homozygotes relative to both $\epsilon 3/4$ heterozygotes and non-carriers. Other studies have also failed to demonstrate reduced regional brain volume in $\epsilon 4$ carriers [17–19]. The results of the present study are consistent with these findings.

Since the risk of memory impairment and AD is significantly greater in elderly $\epsilon 4$ carriers relative to non-carriers and younger $\epsilon 4$ carriers [57], cognitive status and age might interact with regional changes in brain volume. Therefore, it is quite possible that the MTL volume reductions found by previous studies in elderly populations

were caused by the inclusion of APOE $\epsilon 4$ carriers who were more likely to be in the early stages of AD relative to non-carriers. This interpretation is supported by the findings of previous studies that reduced MTL volume in $\epsilon 4$ carriers was associated with poorer memory performance and increased risk for AD. In any case, the results of the present study failed to demonstrate significant differences in regional GM volume in middle-aged APOE $\epsilon 3/4$ heterozygotes, further supporting the notion that reduced fMRI activation in $\epsilon 3/4$ heterozygotes preceded overt changes in hippocampal volume. More studies are needed to determine the conditions under which the APOE $\epsilon 4$ allele results in reduced MTL volume.

In the present study, we also found that greater encoding ability on a neuropsychological measure of learning (i.e. RAVLT) was positively associated with fMRI activation in the left anterior MTL in the $\epsilon 3/3$ homozygotes but not in the $\epsilon 3/4$ heterozygotes. This signifies that among the non-carriers (in whom the MTL is presumably more intact) the strength of the MTL response was closely matched with better learning ability, whereas among the $\epsilon 3/4$ heterozygotes this relationship was disrupted. The amygdala and anterior hippocampus relationships found in $\epsilon 3/3$ homozygotes are consistent with a facilitative role for the amygdala in processing novel episodic information [58]. There was no significant difference in the magnitude of the correlations in the amygdala and hippocampus of the $\epsilon 3/3$ homozygotes, so conclusions regarding any differential contribution of these regions to encoding ability are limited. Future studies examining amygdala-hippocampal connectivity during encoding, as well as psychological factors (e.g. context, affective valence) that may modulate neural activity in these regions would be required to determine the role of the amygdala in encoding of novel visual information in people at risk of AD. Nevertheless, this finding does suggest that the left anterior MTL was recruited to a greater extent in $\epsilon 3/3$ homozygotes, whereas $\epsilon 3/4$ heterozygotes with better encoding ability may have used encoding strategies that did not actively involve the anterior MTL. The fact that the correlation was found in the left hemisphere in $\epsilon 3/3$ homozygotes is consistent with previous studies that have reported primarily left MTL activation for encoding of verbal material (see [59] for review but see also [60]), suggesting that subjects with greater activation may have used a verbal encoding strategy. In contrast, previous studies in cognitively healthy young individuals (mean age = 30) have reported correlations between memory ability and right hippocampal signal change [60]. The exact reason for the divergent findings is not known. More studies examining correlations between memory ability and fMRI signal change in the left and right hippocampus during episodic encoding are needed to clarify these findings.

To date, six studies have examined brain activation differences between $\epsilon 3/3$ homozygotes and $\epsilon 4$ carriers using fMRI, but only two of these used an activation task that had an episodic encoding component. In a series of studies, Smith et al. [61-63] compared fMRI activation between a group of cognitively healthy subjects with a high risk of AD (i.e. $\epsilon 4$ carriers with a family history of AD) versus a low risk group ($\epsilon 3/3$ homozygotes with no family history of AD) during letter fluency and object naming tasks relative to a low-level, resting baseline condition (responding to a grayscale square that randomly changed in intensity). These authors found that $\epsilon 4$ carriers displayed increased activation in the left parietal region during a letter fluency task, and reduced activation in the inferotemporal cortex during the object-naming task. Longitudinal follow-up of a smaller subset ($N = 25$) of these participants four years later with the same object naming task revealed a greater longitudinal decline in fMRI activation in the inferotemporal cortex of the $\epsilon 4$ carriers compared to $\epsilon 3/3$ homozygotes. Since object naming and letter fluency are generally affected after episodic memory symptoms appear in AD [64], it may be that an episodic memory task would be more helpful in assessing the primary area of early pathology in AD – the MTL [6].

Bookheimer et al. [65] compared brain activation differences between cognitively normal $\epsilon 4$ carriers and $\epsilon 3/3$ homozygotes (age range: 47–82 years) using a paired-associate task as a probe of episodic memory. In their task, subjects were to encode seven unrelated word pairs over six learning trials, in which each learning trial was followed by 30-second periods of rest. The encoding phase was followed by six recall trials in which subjects heard the first word of each pair and were asked to recall the second word silently. The major contrast used to examine group differences was encoding + recall relative to the resting baseline. Whole-brain analysis revealed greater activation in the left prefrontal cortex, bilateral orbitofrontal, superior temporal, and inferior and superior parietal regions in $\epsilon 4$ carriers relative to the $\epsilon 3/3$ homozygotes for the contrast of encoding + recall relative to rest. In follow-up ROI analyses, these authors reported that $\epsilon 4$ carriers displayed greater signal change in the left MTL as well. In a follow-up study, Burren et al. [66] reported no differences between $\epsilon 4$ carriers and $\epsilon 3/3$ homozygotes during performance of a modified digit-span (forwards) working memory task relative to a baseline condition that was a single digit. They hypothesized that their results reflected a compensatory response in which $\epsilon 4$ carriers require additional cognitive effort to achieve comparable performance during episodic memory encoding tasks.

More recently, Bondi et al. [67] found that cognitively-healthy, older (mean age = 76) $\epsilon 4$ carriers displayed greater activation in the fusiform gyrus, parietal cortex and

frontal gyrus compared to $\epsilon 3/3$ homozygotes using a paradigm in which subjects had to discriminate novel pictures from a single repeating picture. Follow-up ROI analysis revealed that $\epsilon 3/3$ homozygotes displayed greater activation in the left MTL compared to $\epsilon 4$ carriers, consistent with the findings of the present study. In contrast, the opposite pattern of results was found in the right MTL (i.e. $\epsilon 4$ carriers displayed greater activation in the right MTL). These authors also reported correlations between memory ability on a word-list learning task and right and left hippocampal activation during picture encoding (i.e. a positive correlation in $\epsilon 3/3$ homozygotes and a negative or zero correlation in carriers of the $\epsilon 4$ allele) that were similar to the correlations found in the present study. They suggested that their results were consistent with the compensatory response hypothesis described by Bookheimer et al. [65].

The exact reason for these contradictory findings is not known; however, there are several demographic and methodological differences between our study and the two previous fMRI studies that employed an episodic memory task. First, our subjects were on average 10 to 23 years younger than the participants in Bookheimer et al. [65] and Bondi et al. [67], complicating comparisons between studies. Cabeza et al. [68] found that older individuals (mean age = 70 years) displayed reduced hippocampal activation during episodic retrieval, but greater activity in the prefrontal and parahippocampal cortices compared to young individuals (mean age = 23 years) [see also [69]]. Second, 60% of the subjects in Bookheimer et al. [65] had a family-history of AD, whereas 100% of our subjects had at least one biological parent with AD (Bondi et al. [67] did not report the percentage of subjects in his study with and without a family history of AD). Therefore, differences in these demographic variables might be responsible for the discrepant findings. Longitudinal studies similar to Smith et al. [63] that use episodic memory tasks and employ a $2 \times 2 \times 2$ factorial design with family history of AD and APOE genotype as grouping variables are needed to help clarify these findings.

Third, it is possible that the divergent findings may have resulted from differences in the episodic memory task employed. In the present study, we employed a relatively straightforward novel/familiar discrimination paradigm as the probe of episodic encoding. In contrast, Bookheimer et al. [65] used a paired associate learning/recall task that was presumably more difficult than the paradigm used to define encoding in the present study [see [70]]. The paradigm used in the present study also differed from the encoding task used by Bondi et al. [67]. We presented familiar pictures in two separate trials before the fMRI scan. In contrast, first exposure to the repeating picture was during the fMRI task in the paradigm employed by

Bondi et al. [67] and also by others e.g. [30], therefore some reduction in hippocampal signal during the presentation of the repeating novel stimulus may have occurred (see [50]).

Fourth, it is also possible that the compensatory response in $\epsilon 4$ carriers is more evident in elderly $\epsilon 4$ carriers rather than middle-aged $\epsilon 4$ carriers. Presumably, the negative effects of the APOE $\epsilon 4$ allele on hippocampal structure and function accelerate with increasing age. It is therefore possible that reduced hippocampal volume in elderly $\epsilon 4$ carriers [12-16,19,56,71] (but see [18]) might lead to the recruitment of structures to compensate for accumulating neuropathology in the MTL. Smith et al. [62] suggested that increased activation in $\epsilon 4$ carriers might be caused by a disruption in upstream elements of a functional network, resulting in decreased input from regions that are affected early in AD such as the MTL.

Finally, an important methodological difference between our study and previous studies was the baseline condition used. In the present study, we contrasted novel relative to familiar pictures, whereas previous studies reporting increased activation in $\epsilon 4$ carriers used lower level baseline conditions. Since most fMRI designs employ a subtraction method (activation - baseline), the baseline task chosen has a major effect on brain activation patterns observed. Using rest as a baseline condition may augment unintended effects in the experimental task such as language or sensorimotor processes, and increase inter-subject variability in brain activation during the baseline condition since there is less control over the mental state of the subject (i.e. what is the subject thinking about during the resting condition?).

To address this issue, Stark and Squire [72] designed an elegant study to examine the effects of several different baseline conditions including resting fixation on MTL fMRI activation during presentation of novel and familiar pictures. These authors found that MTL activation to novel and familiar pictures was significantly greater when an active task was used as a baseline (in their case, an odd/even number comparison task) than when passive rest was used as the baseline. In fact, several MTL regions were found to display increased activation during rest relative to familiar or novel pictures. In contrast, when the active baseline task was used, both novel and familiar pictures were associated with significant bilateral activity throughout much of the MTL. These authors suggested that using rest as the baseline condition may reduce, eliminate or even reverse the sign of activity during a cognitive task. At the very least, the lack of control over the mental state of subjects during the resting state makes it not ideal to serve as a baseline condition for comparison to cognitive tasks.

More recent evidence suggests that the hippocampus is coactive during the resting state with several cortical structures including precuneus and posterior cingulate cortex [73], and this resting state activation is disrupted in individuals with MCI and AD [74,75]. These new data make the previous findings of increased task-related activation relative to low-level baseline conditions in $\epsilon 4$ carriers more difficult to interpret, and argue against the use of resting baseline conditions in fMRI studies targeting these brain regions, especially in individuals with AD or at risk for AD.

Several positron emission tomography (PET) imaging studies have also reported reductions in resting state cerebral metabolic rate of glucose (CMRgl) in the MTL and cortical regions of AD patients and cognitively normal $\epsilon 4$ carriers between the ages of 20 and 65 years [76-82], suggesting different baseline neural activity in individuals at risk for AD. Reduced cerebral glucose utilization has also been shown to inhibit the induction of synaptic plasticity in the hippocampus of rats [83] and impair learning and memory on hippocampus-dependent tasks [84]. Prior research has demonstrated that CMRgl is coupled to regional cerebral blood flow (rCBF) [85,86], and both CMRgl [87] and rCBF [88,89] are coupled to the neural response. The current finding of reduced hippocampal BOLD signal during episodic encoding in $\epsilon 3/4$ heterozygotes is consistent with these studies, supporting the idea that reduced glucose metabolism would lead to reduced neuronal activation in the MTL during encoding. More research is needed to determine the relationship between reduced resting levels of CMRgl in $\epsilon 4$ carriers and task-related changes in the fMRI BOLD signal.

Reduced hippocampal activation in $\epsilon 3/4$ heterozygotes is consistent with several previous fMRI studies of memory encoding in patients with AD and MCI. For example, AD patients display reduced hippocampal activation compared to elderly controls during memory encoding [90,91], whereas no differences were found in the motor cortex during a sensorimotor task [90]. Machulda et al. [90] also reported similar findings in MCI patients [see also [92]]. Johnson et al. [50] found that elderly normal subjects displayed a hippocampal adaptation response (i.e. reduction in signal intensity) to repeating unfamiliar faces that was not displayed by age-matched patients with MCI. Taken together, these prior results indicate that MTL activation is reduced in AD and MCI patients with objective memory impairment relative to elderly, cognitively normal controls.

In a recent study, Dickerson et al. [93] examined differences in the extent of brain activation (i.e. number of contiguous as well as non-contiguous voxels), but not the magnitude of activation, during episodic encoding in AD

patients and elderly individuals with and without subjective memory complaints who did not meet the clinical criterion for MCI [94]. These authors manually traced bilateral ROIs of the hippocampus and entorhinal cortex from each participant's structural MRI. They found that individuals with memory complaints displayed increased extent of activation in each of the four ROIs relative to age-matched subjects with no memory complaints. AD patients were found to display significantly less extensive activation relative to both groups. Furthermore, APOE $\epsilon 4$ carriers were found to display a greater extent of activation relative to non-carriers when collapsed across the memory complaints factor.

Dickerson et al. [93] suggested that increased extent of MTL activation early in the course of prodromal AD was followed by a subsequent decrease in the extent of activation as the disease progresses. An important caveat to these findings is that the individuals with memory complaints had significantly greater education and total word recall on a word-list learning task relative to individuals without memory complaints. Therefore, increased extent of activation may have been related to the paradoxically better encoding ability in individuals with memory complaints. This interpretation is supported by the finding of the present study that total word recall on the RAVLT was associated with increased magnitude of activation during episodic encoding, at least in the $\epsilon 3/3$ homozygotes. Previous studies have also reported similar findings [60,95,96], suggesting that individuals with better episodic memory ability display greater fMRI activation in the MTL during episodic encoding tasks.

Reduced neural function in the MTL of asymptomatic $\epsilon 4$ carriers may also lead to a greater age-related decline in episodic memory over time. Several studies have reported that older $\epsilon 4$ carriers display significantly greater longitudinal age-related decline in episodic memory functions than non-carriers [9-11,97,98]. For example, Caselli et al. [97] reported that cognitively normal $\epsilon 4$ carriers (mean age = 60 years) displayed significantly greater longitudinal decline during a three-year follow-up period for total word recall on the RAVLT and delayed recall of complex figures. Our findings that hippocampal activation during a novel-picture encoding task is reduced in $\epsilon 3/4$ heterozygotes, and that memory encoding ability is positively associated with anterior MTL activation in $\epsilon 3/3$ homozygotes but not $\epsilon 3/4$ heterozygotes, are consistent with previous findings that MTL-dependent memory processes decline at a greater rate in individuals who are $\epsilon 4$ carriers and have a family history of AD. These results leave open the possibility that $\epsilon 4$ carriers recruit other brain regions and/or rely on other compensatory psychological processes (e.g. verbal rehearsal of visual information) during

encoding to compensate for early pathological changes in MTL structure and function [65,67].

Studies in transgenic mice expressing a human form of the APOE $\epsilon 4$ allele also support the negative effects of the $\epsilon 4$ allele on hippocampal function. For example, the presence of the APOE $\epsilon 4$ allele increases the production of β -amyloid (the main constituent of the senile plaques in AD) in cultured hippocampal neurons [99], reduces synaptic plasticity in the hippocampus [100], promotes β -amyloid induced blockade of plasticity in the hippocampus [101] and impairs hippocampus-dependent spatial memory [102,103]. Our results are consistent with these findings as well.

This study has several limitations. We did not include a low-level baseline condition (for the reasons discussed above), limiting our ability to compare and contrast our results directly to previous fMRI studies of APOE genotype. Furthermore, the findings of fMRI activation differences associated with APOE genotype were restricted to $\epsilon 3/3$ homozygotes and $\epsilon 3/4$ heterozygotes with a parental history of AD. Therefore, our results only generalize to individuals with these APOE genotypes and a family history of AD. More studies are needed to determine the effects of other APOE genotypes (e.g. $\epsilon 4/4$, $\epsilon 2/3$) and family history of AD on brain activation during memory encoding. Third, we also did not include a post-scan recognition memory test to determine if the novel pictures were encoded into memory. While conclusions regarding APOE genotype differences in encoding related processes cannot be made directly from this study, they can be inferred on the basis that novel information is more likely to be encoded than familiar information (see also [31]).

Fourth, several of the subjects in this study had elevated total blood cholesterol and/or high blood pressure. Importantly, there were no group differences in the percentage of subjects with these conditions, and these percentages were also no greater than observed prevalence rates in the general US population. Fifth, several subjects in each group were current users of medications that influence brain function and may affect the hemodynamic BOLD response. More studies are needed to determine the effects of these drugs and/or medical conditions on the fMRI signal. Finally, the subjects in this study were predominantly Caucasian, highly educated and female. Additional studies are needed to determine whether our findings can be confirmed in subjects with other demographic characteristics. Despite these limitations, the results of the present study provide converging evidence for the idea that the MTL displays functional decline associated with the APOE $\epsilon 4$ allele in individuals with a family history of AD.

If compromised MTL function continues to be observed in healthy $\epsilon 4$ carriers, this group of subjects may represent a good study population for novel treatments designed to delay the onset of or to prevent AD. More studies are needed to clarify inconsistent findings and to determine the reliability, validity and clinical utility of hippocampal activation paradigms for the early detection of AD. Although the results of the present study indicate cross-sectional differences in MTL activation based on APOE genotype, future studies employing longitudinal designs will be required to determine whether or not differences in MTL activation in individuals at genetic risk for AD can be used to improve the detection of incipient AD.

Conclusion

This study found that APOE $\epsilon 3/4$ heterozygotes with a family-history of AD displayed reduced activation compared to $\epsilon 3/3$ homozygotes in the MTL during a novel picture-encoding task. Importantly, these changes occurred in the absence of cognitive differences between the groups. We also found that greater encoding ability on a neuropsychological measure of learning (i.e. RAVLT) was positively associated with fMRI activation in the left anterior MTL in the $\epsilon 3/3$ homozygotes but not in the $\epsilon 3/4$ heterozygotes. Together with previous studies reporting reduced glucose metabolism and AD-related neuropathology, this study provides convergent validity for the idea that the MTL exhibits functional decline associated with the APOE $\epsilon 4$ allele.

Competing interests

The author(s) declare that they have no competing interests.

Authors' contributions

MAT and TWS carried out the statistical analysis, drafted the manuscript and assisted in the acquisition of data. MLR, BMT and SA assisted in data acquisition and drafting of the manuscript. MAS and BPH assisted in data acquisition, interpreting the results and drafting the manuscript. SCJ drafted the manuscript, conceived of the study concept and design, assisted in the statistical analysis and interpretation of the results. All authors read and approved the final manuscript.

Acknowledgements

This study was supported in part by AG021155 (SCJ). The assistance of Justin Dunker, Michael Ward, Andrew Alexander, Cynthia Carlsson, Michael Anderle and Ron Fisher is greatly appreciated. We would like to thank Mark Bondi, Lars Nyberg and Matthias Riepe for helpful comments on earlier versions of this manuscript. We especially thank the WRAP participants of this study.

References

1. Farrer LA, Cupples LA, Haines JL, Hyman B, Kukull WA, Mayeux R, Myers RH, Pericak-Vance MA, Risch N, van Duijn CM: **Effects of age, sex, and ethnicity on the association between apolipoprotein E genotype and Alzheimer disease. A meta-analysis. APOE and Alzheimer Disease Meta Analysis Consortium.** *JAMA* 1997, **278**:1349-1356.

2. Cupples LA, Farrer LA, Sadovnick AD, Relkin N, Whitehouse P, Green RC: **Estimating risk curves for first-degree relatives of patients with Alzheimer's disease: the REVEAL study.** *Genet Med* 2004, **6**:192-196.
3. Corder EH, Saunders AM, Strittmatter WJ, Schmechel DE, Gaskell PC, Small GW, Roses AD, Haines JL, Pericak-Vance MA: **Gene dose of apolipoprotein E type 4 allele and the risk of Alzheimer's disease in late onset families.** *Science* 1993, **261**:921-923.
4. Duara R, Barker WW, Lopez-Alberola R, Loewenstein DA, Grau LB, Gilchrist D, Sevush S, St George-Hyslop S: **Alzheimer's disease: interaction of apolipoprotein E genotype, family history of dementia, gender, education, ethnicity, and age of onset.** *Neurology* 1996, **46**:1575-1579.
5. Martinez M, Campion D, Brice A, Hannequin D, Dubois B, Didierjean O, Michon A, Thomas-Anterion C, Puel M, Frebourg T, Agid Y, Clerget-Darpoux F: **Apolipoprotein E epsilon4 allele and familial aggregation of Alzheimer disease.** *Arch Neurol* 1998, **55**:810-816.
6. Braak H, Braak E, Bohl J: **Staging of Alzheimer-related cortical destruction.** *Eur Neurol* 1993, **33**:403-408.
7. Jack CR Jr, Petersen RC, Xu YC, O'Brien PC, Smith GE, Ivnik RJ, Boeve BF, Waring SC, Tangalos EG, Kokmen E: **Prediction of AD with MRI-based hippocampal volume in mild cognitive impairment.** *Neurology* 1999, **52**:1397-1403.
8. Hyman BT, Arriagada PV, van Hoesen GW, Damasio AR: **Memory impairment in Alzheimer's Disease: An anatomical perspective.** In *Neuropsychology of Alzheimer's disease and other dementias* 1st edition. Edited by: Parks RV, Zec RF, Wilson RS. New York: Oxford University Press; 1993:138-150.
9. Baxter LC, Caselli RJ, Johnson SC, Reiman E, Osborne D: **Apolipoprotein E epsilon 4 affects new learning in cognitively normal individuals at risk for Alzheimer's disease.** *Neurobiol Aging* 2003, **24**:947-952.
10. Caselli RJ, Graff-Radford NR, Reiman EM, Weaver A, Osborne D, Lucas J, Uecker A, Thibodeau SN: **Preclinical memory decline in cognitively normal apolipoprotein E-epsilon4 homozygotes.** *Neurology* 1999, **53**:201-207.
11. Mayeux R, Small SA, Tang M, Tycko B, Stern Y: **Memory performance in healthy elderly without Alzheimer's disease: effects of time and apolipoprotein-E.** *Neurobiol Aging* 2001, **22**:683-689.
12. Cohen RM, Small C, Lalonde F, Friz J, Sunderland T: **Effect of apolipoprotein E genotype on hippocampal volume loss in aging healthy women.** *Neurology* 2001, **57**:2223-2228.
13. den Heijer T, Oudkerk M, Launer LJ, van Duijn CM, Hofman A, Breteler MM: **Hippocampal, amygdalar, and global brain atrophy in different apolipoprotein E genotypes.** *Neurology* 2002, **59**:746-748.
14. Lemaitre H, Crivello F, Dufouil C, Grasset B, Tzourio C, Alperovitch A, Mazoyer B: **No epsilon4 gene dose effect on hippocampal atrophy in a large MRI database of healthy elderly subjects.** *Neuroimage* 2005, **24**:1205-1213.
15. Moffat SD, Szekely CA, Zonderman AB, Kabani NJ, Resnick SM: **Longitudinal change in hippocampal volume as a function of apolipoprotein E genotype.** *Neurology* 2000, **55**:134-136.
16. Plassman BL, Welsh-Bohmer KA, Bigler ED, Johnson SC, Anderson CV, Helms MJ, Saunders AM, Breitner JC: **Apolipoprotein E epsilon 4 allele and hippocampal volume in twins with normal cognition.** *Neurology* 1997, **48**:985-989.
17. Bigler ED, Tate DF, Miller MJ, Rice SA, Hessel CD, Earl HD, Tschanz JT, Plassman B, Welsh-Bohmer KA: **Dementia, asymmetry of temporal lobe structures, and apolipoprotein E genotype: relationships to cerebral atrophy and neuropsychological impairment.** *J Int Neuropsychol Soc* 2002, **8**:925-933.
18. Jernigan TL, Archibald SL, Fennema-Notestine C, Gamst AC, Stout JC, Bonner J, Hesselink JR: **Effects of age on tissues and regions of the cerebrum and cerebellum.** *Neurobiol Aging* 2001, **22**:581-594.
19. Schmidt H, Schmidt R, Fazekas F, Semmler J, Kapeller P, Reinhart B, Kostner GM: **Apolipoprotein E e4 allele in the normal elderly: neuropsychologic and brain MRI correlates.** *Clin Genet* 1996, **50**:293-299.

20. Cabeza R, Dolcos F, Graham R, Nyberg L: **Similarities and differences in the neural correlates of episodic memory retrieval and working memory.** *Neuroimage* 2002, **16**:317-330.
21. Cabeza R, Prince SE, Daselaar SM, Greenberg DL, Budde M, Dolcos F, LaBar KS, Rubin DC: **Brain activity during episodic retrieval of autobiographical and laboratory events: an fMRI study using a novel photo paradigm.** *J Cogn Neurosci* 2004, **16**:1583-1594.
22. Cabeza R, Rao SM, Wagner AD, Mayer AR, Schacter DL: **Can medial temporal lobe regions distinguish true from false? An event-related functional MRI study of veridical and illusory recognition memory.** *Proc Natl Acad Sci U S A* 2001, **98**:4805-4810.
23. Gron G, Bittner D, Schmitz B, Wunderlich AP, Tomczak R, Riepe MW: **Hippocampal activations during repetitive learning and recall of geometric patterns.** *Learn Mem* 2001, **8**:336-345.
24. Gron G, Wunderlich AP, Spitzer N, Tomczak R, Riepe MW: **Brain activation during human navigation: gender-different neural networks as substrate of performance.** *Nat Neurosci* 2000, **3**:404-408.
25. Nyberg L, McIntosh AR, Cabeza R, Habib R, Houle S, Tulving E: **General and specific brain regions involved in encoding and retrieval of events: what, where, and when.** *Proc Natl Acad Sci U S A* 1996, **93**:11280-11285.
26. Brewer JB, Zhao Z, Desmond JE, Glover GH, Gabrieli JD: **Making memories: brain activity that predicts how well visual experience will be remembered.** *Science* 1998, **281**:1185-1187.
27. Grunwald T, Lehnertz K, Heinze HJ, Helmstaedter C, Elger CE: **Verbal novelty detection within the human hippocampus proper.** *Proc Natl Acad Sci U S A* 1998, **95**:3193-3197.
28. Habib R, McIntosh AR, Wheeler MA, Tulving E: **Memory encoding and hippocampally-based novelty/familiarity discrimination networks.** *Neuropsychologia* 2003, **41**:271-279.
29. Knight R: **Contribution of human hippocampal region to novelty detection.** *Nature* 1996, **383**:256-259.
30. Stern CE, Corkin S, Gonzalez RG, Guimaraes AR, Baker JR, Jennings PJ, Carr CA, Sugiura RM, Vedantham V, Rosen BR: **The hippocampal formation participates in novel picture encoding: evidence from functional magnetic resonance imaging.** *Proc Natl Acad Sci U S A* 1996, **93**:8660-8665.
31. Tulving E, Markowitsch HJ, Craik FE, Habib R, Houle S: **Novelty and familiarity activations in PET studies of memory encoding and retrieval.** *Cereb Cortex* 1996, **6**:71-79.
32. Lepage M, Habib R, Tulving E: **Hippocampal PET activations of memory encoding and retrieval: the HIPER model.** *Hippocampus* 1998, **8**:313-322.
33. Ranganath C, Rainer G: **Neural mechanisms for detecting and remembering novel events.** *Nat Rev Neurosci* 2003, **4**:193-202.
34. Tulving E, Kroll N: **Novelty assessment in the brain and long-term memory encoding.** *Psychonomic Bulletin and Review* 1995, **2**:387-390.
35. Sager MA, Hermann BP, La Rue A: **Middle-aged Children of Persons with Alzheimer's Disease: APOE Genotypes and Cognitive Function in the Wisconsin Registry for Alzheimer's Prevention.** *Journal of Geriatric Psychiatry and Neurology* in press.
36. Zannis VI, Kardassis D, Zanni EE: **Genetic mutations affecting human lipoproteins, their receptors, and their enzymes.** *Adv Hum Genet* 1993, **21**:145-319.
37. Wechsler D: *Wechsler abbreviated scale of intelligence* 1st edition. San Antonio, TX: Psychological Corporation; 1999.
38. Wechsler D: *Wechsler adult intelligence scale* 3rd edition. San Antonio, TX: The Psychological Corporation; 1997.
39. Benton LA, Hamsher K, Sivan AB: *Controlled Oral Word Association Test. Multilingual Aphasia Examination* 3rd edition. Iowa City, IA: AJA; 1994.
40. Spreen O, Strauss E: *A Compendium of Neuropsychological Tests* New York: Oxford; 1998.
41. Goodglass H, Kaplan E: *The assessment of aphasia and related disorders* 2nd edition. Philadelphia: Lea & Febiger; 1987.
42. Reitan RM, Wolfson D: *The Halstead-Reitan Neuropsychological Test Battery: Theory and clinical interpretation* 2nd edition. Tucson: Neuropsychology Press; 1993.
43. Radloff LS: **The CES-D scale: a self-report depression scale for research in the general population.** *Applied Psychological Measurements* 1977, **1**:385-401.
44. Snodgrass J, Vanderwart M: **A standardized set of 260 pictures: Norms for name agreement, image agreement, familiarity, and visual complexity.** *Journal of Experimental Psychology: Human Learning and Memory* 1980, **6**:174-215.
45. Moritz CH, Johnson S, Meyerand ME: **Variable-length block memory encoding paradigm demonstrates individual subject hippocampal fMRI response.** *Proc Intl Soc Magn Res Med* 2002, **10**.
46. Liu TT, Frank LR, Wong EC, Buxton RB: **Detection power, estimation efficiency, and predictability in event-related fMRI.** *Neuroimage* 2001, **13**:759-773.
47. Jenkinson M: **Fast, automated, N-dimensional phase-unwrapping algorithm.** *Magn Reson Med* 2003, **49**:193-197.
48. Friston KJ, Holmes AP, Worsley KJ, Poline JP, Frith CD, Frackowiak RSJ: **Statistical parametric maps in functional imaging: A general linear approach.** *Human Brain Mapping* 1995, **2**:189-210.
49. Bullmore E, Brammer M, Williams SC, Rabe-Hesketh S, Janot N, David A, Mellers J, Howard R, Sham P: **Statistical methods of estimation and inference for functional MR image analysis.** *Magn Reson Med* 1996, **35**:261-277.
50. Johnson SC, Baxter LC, Susskind-Wilder L, Connor DJ, Sabbagh MN, Caselli RJ: **Hippocampal adaptation to face repetition in healthy elderly and mild cognitive impairment.** *Neuropsychologia* 2004, **42**:980-989.
51. Genovese CR, Lazar NA, Nichols T: **Thresholding of statistical maps in functional neuroimaging using the false discovery rate.** *Neuroimage* 2002, **15**:870-878.
52. Good CD, Johnsrude IS, Ashburner J, Henson RN, Friston KJ, Frackowiak RS: **A voxel-based morphometric study of ageing in 465 normal adult human brains.** *Neuroimage* 2001, **14**:21-36.
53. Ashburner J, Friston KJ: **Voxel-based morphometry--the methods.** *Neuroimage* 2000, **11**:805-821.
54. McMillan AB, Hermann BP, Johnson SC, Hansen RR, Seidenberg M, Meyerand ME: **Voxel-based morphometry of unilateral temporal lobe epilepsy reveals abnormalities in cerebral white matter.** *Neuroimage* 2004, **23**:167-174.
55. Albert MS, Moss MB, Tanzi R, Jones K: **Preclinical prediction of AD using neuropsychological tests.** *J Int Neuropsychol Soc* 2001, **7**:631-639.
56. Reiman EM, Uecker A, Caselli RJ, Lewis S, Bandy D, de Leon MJ, De Santi S, Convit A, Osborne D, Weaver A, Thibodeau SN: **Hippocampal volumes in cognitively normal persons at genetic risk for Alzheimer's disease.** *Ann Neurol* 1998, **44**:288-291.
57. Devanand DP, Pelton GH, Zamora D, Liu X, Tabert MH, Goodkind M, Scarmeas N, Braun I, Stern Y, Mayeux R: **Predictive utility of apolipoprotein E genotype for Alzheimer disease in outpatients with mild cognitive impairment.** *Arch Neurol* 2005, **62**:975-980.
58. Wright CI, Martis B, Schwartz CE, Shin LM, Fischer HH, McMullin K, Rauch SL: **Novelty responses and differential effects of order in the amygdala, substantia innominata, and inferior temporal cortex.** *Neuroimage* 2003, **18**:660-669.
59. Cabeza R, Nyberg L: **Imaging cognition II: An empirical review of 275 PET and fMRI studies.** *J Cogn Neurosci* 2000, **12**:1-47.
60. Johnson SC, Saykin AJ, Flashman LA, McAllister TW, Sparling MB: **Brain activation on fMRI and verbal memory ability: functional neuroanatomic correlates of CVLT performance.** *J Int Neuropsychol Soc* 2001, **7**:55-62.
61. Smith CD, Andersen AH, Kryscio RJ, Schmitt FA, Kindy MS, Blonder LX, Avision MJ: **Altered brain activation in cognitively intact individuals at high risk for Alzheimer's disease.** *Neurology* 1999, **53**:1391-1396.
62. Smith CD, Andersen AH, Kryscio RJ, Schmitt FA, Kindy MS, Blonder LX, Avision MJ: **Women at risk for AD show increased parietal activation during a fluency task.** *Neurology* 2002, **58**:1197-1202.
63. Smith CD, Kryscio RJ, Schmitt FA, Lovell MA, Blonder LX, Rayens WS, Andersen AH: **Longitudinal Functional Alterations in Asymptomatic Women at Risk for Alzheimer's Disease.** *J Neuroimaging* 2005, **15**:271-277.
64. Zec RF: **Neuropsychological functioning in Alzheimer's Disease.** In *Neuropsychology of Alzheimer's disease and other dementias* 1st edition. Edited by: Parks RW, Zec RF, Wilson RS. New York: Oxford University Press; 1993:3-80.
65. Bookheimer SY, Strojwas MH, Cohen MS, Saunders AM, Pericak-Vance MA, Mazziotta JC, Small GW: **Patterns of brain activation in people at risk for Alzheimer's disease.** *N Engl J Med* 2000, **343**:450-456.

66. Burggren AC, Small GW, Sabb FW, Bookheimer SY: **Specificity of brain activation patterns in people at genetic risk for Alzheimer disease.** *Am J Geriatr Psychiatry* 2002, **10**:44-51.
67. Bondi MW, Houston WS, Eyster LT, Brown GG: **fMRI evidence of compensatory mechanisms in older adults at genetic risk for Alzheimer disease.** *Neurology* 2005, **64**:501-508.
68. Cabeza R, Daselaar SM, Dolcos F, Prince SE, Budde M, Nyberg L: **Task-independent and task-specific age effects on brain activity during working memory, visual attention and episodic retrieval.** *Cereb Cortex* 2004, **14**:364-375.
69. Daselaar SM, Veltman DJ, Rombouts SA, Raaijmakers JG, Jonker C: **Neuroanatomical correlates of episodic encoding and retrieval in young and elderly subjects.** *Brain* 2003, **126**:43-56.
70. Watkins MJ, Gardiner JM: **An appreciation of generate-recognition theory of recall.** *Journal of Verbal Learning and Verbal Behavior* 1979, **18**:687-704.
71. Tohogi H, Takahashi S, Kato E, Homma A, Niina R, Sasaki K, Yonezawa H, Sasaki M: **Reduced size of right hippocampus in 39- to 80-year-old normal subjects carrying the apolipoprotein E epsilon4 allele.** *Neurosci Lett* 1997, **236**:21-24.
72. Stark CE, Squire LR: **When zero is not zero: the problem of ambiguous baseline conditions in fMRI.** *Proc Natl Acad Sci U S A* 2001, **98**:12760-12766.
73. Greicius MD, Krasnow B, Reiss AL, Menon V: **Functional connectivity in the resting brain: a network analysis of the default mode hypothesis.** *Proc Natl Acad Sci U S A* 2003, **100**:253-258.
74. Greicius MD, Srivastava G, Reiss AL, Menon V: **Default-mode network activity distinguishes Alzheimer's disease from healthy aging: evidence from functional MRI.** *Proc Natl Acad Sci U S A* 2004, **101**:4637-4642.
75. Rombouts SA, Barkhof F, Goekoop R, Stam CJ, Scheltens P: **Altered resting state networks in mild cognitive impairment and mild Alzheimer's disease: An fMRI study.** *Hum Brain Mapp* 2005, **26**:231-239.
76. Alexander GE, Chen K, Pietrini P, Rapoport SI, Reiman EM: **Longitudinal PET Evaluation of Cerebral Metabolic Decline in Dementia: A Potential Outcome Measure in Alzheimer's Disease Treatment Studies.** *Am J Psychiatry* 2002, **159**:738-745.
77. Reiman EM, Caselli RJ, Chen K, Alexander GE, Bandy D, Frost J: **Declining brain activity in cognitively normal apolipoprotein E epsilon 4 heterozygotes: A foundation for using positron emission tomography to efficiently test treatments to prevent Alzheimer's disease.** *Proc Natl Acad Sci U S A* 2001, **98**:3334-3339.
78. Reiman EM, Caselli RJ, Alexander GE, Chen K: **Tracking the decline in cerebral glucose metabolism in persons and laboratory animals at genetic risk for Alzheimer's disease.** *Clinical Neuroscience Research* 2001, **1**:194-206.
79. Reiman EM, Caselli RJ, Yun LS, Chen K, Bandy D, Minoshima S, Thibodeau SN, Osborne D: **Preclinical evidence of Alzheimer's disease in persons homozygous for the epsilon 4 allele for apolipoprotein E.** *N Engl J Med* 1996, **334**:752-758.
80. Reiman EM, Chen K, Alexander GE, Caselli RJ, Bandy D, Osborne D, Saunders AM, Hardy J: **Functional brain abnormalities in young adults at genetic risk for late-onset Alzheimer's dementia.** *Proc Natl Acad Sci U S A* 2004, **101**:284-289.
81. Small GW, Mazziotta JC, Collins MT, Baxter LR, Phelps ME, Mandelkern MA, Kaplan A, La Rue A, Adamson CF, Chang L: **Apolipoprotein E type 4 allele and cerebral glucose metabolism in relatives at risk for familial Alzheimer disease.** *JAMA* 1995, **273**:942-947.
82. Small GW, Ercoli LM, Silverman DH, Huang SC, Komo S, Bookheimer SY, Lavretsky H, Miller K, Siddarth P, Rasgon NL, Mazziotta JC, Saxena S, Wu HM, Mega MS, Cummings JL, Saunders AM, Pericak-Vance MA, Roses AD, Barrio JR, Phelps ME: **Cerebral metabolic and cognitive decline in persons at genetic risk for Alzheimer's disease.** *Proc Natl Acad Sci U S A* 2000, **97**:6037-6042.
83. Izumi Y, Zorumski CF: **Involvement of nitric oxide in low glucose-mediated inhibition of hippocampal long-term potentiation.** *Synapse* 1997, **25**:258-262.
84. Biessels GJ, Kamal A, Ramakers GM, Urban IJ, Spruijt BM, Erkelens DW, Gispen WH: **Place learning and hippocampal synaptic plasticity in streptozotocin-induced diabetic rats.** *Diabetes* 1996, **45**:1259-1266.
85. Sokoloff L: **Modeling metabolic processes in the brain in vivo.** *Ann Neurol* 1984, **15**(Suppl):S1-11.
86. Sokoloff L: **Metabolic probes for localization of functional activity in the central nervous system.** *Int J Neurol* 1984, **18**:40-48.
87. Mosconi L, De Santi S, Rusinek H, Convit A, de Leon MJ: **Magnetic resonance and PET studies in the early diagnosis of Alzheimer's disease.** *Expert Rev Neurother* 2004, **4**:831-849.
88. Logothetis NK, Wandell BA: **Interpreting the BOLD signal.** *Annu Rev Physiol* 2004, **66**:735-769.
89. Heeger DJ, Ress D: **What does fMRI tell us about neuronal activity?** *Nat Rev Neurosci* 2002, **3**:142-151.
90. Machulda MM, Ward HA, Borowski B, Gunter JL, Cha RH, O'Brien PC, Petersen RC, Boeve BF, Knopman D, Tang-Wai DF, Ivnik RJ, Smith GE, Tangalos EG, Jack CR Jr: **Comparison of memory fMRI response among normal, MCI, and Alzheimer's patients.** *Neurology* 2003, **61**:500-506.
91. Sperling RA, Bates JF, Chua EF, Cocchiarella AJ, Rentz DM, Rosen BR, Schacter DL, Albert MS: **fMRI studies of associative encoding in young and elderly controls and mild Alzheimer's disease.** *J Neurol Neurosurg Psychiatry* 2003, **74**:44-50.
92. Johnson SC, Schmitz TW, Moritz CH, Meyerand ME, Rowley HA, Alexander AL, Hansen KV, Gleason CE, Carlsson CM, Ries ML, Asthana S, Chen K, Reiman EM, Alexander GE: **Activation of brain regions vulnerable to Alzheimer's disease: The effect of mild cognitive impairment.** *Neurobiol Aging* in press.
93. Dickerson BC, Salat DH, Greve DN, Chua EF, Rand-Giovannetti E, Rentz DM, Bertram L, Mullin K, Tanzi RE, Blacker D, Albert MS, Sperling RA: **Increased hippocampal activation in mild cognitive impairment compared to normal aging and AD.** *Neurology* 2005, **65**:404-411.
94. Petersen RC: **Mild cognitive impairment as a diagnostic entity.** *J Intern Med* 2004, **256**:183-194.
95. Gron G, Bittner D, Schmitz B, Wunderlich AP, Tomczak R, Riepe MW: **Variability in memory performance in aged healthy individuals: an fMRI study.** *Neurobiol Aging* 2003, **24**:453-462.
96. Gron G, Riepe MW: **Neural basis for the cognitive continuum in episodic memory from health to Alzheimer disease.** *Am J Geriatr Psychiatry* 2004, **12**:648-652.
97. Caselli RJ, Reiman EM, Osborne D, Hentz JG, Baxter LC, Hernandez JL, Alexander GG: **Longitudinal changes in cognition and behavior in asymptomatic carriers of the APOE e4 allele.** *Neurology* 2004, **62**:1990-1995.
98. Dik MG, Jonker C, Bouter LM, Geerlings MI, van Kamp GJ, Deeg DJ: **APOE-epsilon4 is associated with memory decline in cognitively impaired elderly.** *Neurology* 2000, **54**:1492-1497.
99. Lahiri DK, Sambamurti K, Bennett DA: **Apolipoprotein gene and its interaction with the environmentally driven risk factors: molecular, genetic and epidemiological studies of Alzheimer's disease.** *Neurobiol Aging* 2004, **25**:651-660.
100. Trommer BL, Shah C, Yun SH, Gamkrelidze G, Pasternak ES, Ye GL, Sotak M, Sullivan PM, Pasternak JF, Ladu MJ: **ApoE isoform affects LTP in human targeted replacement mice.** *Neuroreport* 2004, **15**:2655-2658.
101. Yun SH, Gamkrelidze G, Pasternak JF, LaDu M, Trommer BL: **Oligomeric amyloid 1-42 decreases the excitability of dentate gyrus granule cells in hippocampal slices from ApoE4-TR mice.** *Society for Neuroscience Abstract Viewer/Itinerary Planner Online* 2004. Program No. 217.219
102. Raber J, Wong D, Buttini M, Orth M, Bellosta S, Pitas RE, Mahley RW, Mucke L: **Isoform-specific effects of human apolipoprotein E on brain function revealed in ApoE knockout mice: increased susceptibility of females.** *Proc Natl Acad Sci U S A* 1998, **95**:10914-10919.
103. Harris FM, Brecht WJ, Xu Q, Tesseur I, Kekoni L, Wyss-Coray T, Fish JD, Masliah E, Hopkins PC, Scarsea-Levie K, Weisgraber KH, Mucke L, Mahley RW, Huang Y: **Carboxyl-terminal-truncated apolipoprotein E4 causes Alzheimer's disease-like neurodegeneration and behavioral deficits in transgenic mice.** *Proc Natl Acad Sci U S A* 2003, **100**:10966-10971.

Pre-publication history

The pre-publication history for this paper can be accessed here:

<http://www.biomedcentral.com/1741-7015/4/1/prepub>