

Developmental Abnormalities and Reduced Fruit Softening in Tomato Plants Expressing an Antisense Rab11 GTPase Gene

Chungui Lu,¹ Zamri Zainal,² Gregory A. Tucker, and Grantley W. Lycett³

School of Biosciences, University of Nottingham, Sutton Bonington Campus, Loughborough, LE12 5RD, United Kingdom

A cDNA clone from tomato fruit encodes a protein with strong homology with the *rab11/YPT3* class of small GTPases that is thought to be involved in the control of protein trafficking within cells. The gene, *LeRab11a*, showed a pattern consistent with a single copy in DNA gel blots. The corresponding mRNA was developmentally regulated during fruit ripening, and its expression was inhibited in several ripening mutants. Its reduced expression in the *Never-ripe* mutant indicates that it may be induced by ethylene in fruit. The ripening-induced expression in tissues that are undergoing cell wall loosening immediately suggests a possible role in trafficking of cell wall-modifying enzymes. The message also was produced in leaves and flowers but not in roots. Antisense transformation was used to generate a “mutant phenotype.” Antisense fruit changed color as expected but failed to soften normally. This was accompanied by reduced levels of two cell wall hydrolases, pectinesterase and polygalacturonase. There were other phenotypic effects in the plants, including determinate growth, reduced apical dominance, branched inflorescences, abnormal floral structure, and ectopic shoots on the leaves. In some plants, ethylene production was reduced. These data suggest an alternative or additional role in exocytosis or endocytosis of homeotic proteins, hormone carriers, or receptors.

INTRODUCTION

The process by which proteins and other large molecules are trafficked through the cell has been fairly well characterized in yeast and mammalian systems, and many of the processes and components have been observed in plant cells (Sanderfoot and Raikhel, 1999). Secreted proteins that are made on the rough endoplasmic reticulum (ER) pass cotranslationally into the lumen of the ER. Coated vesicles carrying a protein cargo bud off from the ER and fuse with the Golgi apparatus. From the *trans*-Golgi network, other coated vesicles carry the cargo to the cell membrane. Cargos also may be transported to other membrane systems, such as the vacuole or prevacuolar compartment, or may be transported in the opposite direction through the Golgi stacks from *trans* to *cis* and from the Golgi apparatus to the ER. Endocytotic vesicles carry cargoes from the cell membrane; in animal systems, this pathway leads to a series of lytic compartments called endosomes. Each transport process is performed by a different type of coated vesicle with characteristic proteins on the surface that ensure the correct docking of the vesicle with its target. One class of pro-

teins found on these vesicles is the Rab GTPases, of which there are ~30 different families (Olkkonen and Stenmark, 1997). Each type of Rab is associated with a specific type of vesicle and probably plays a role in ensuring correct fusion (Takai et al., 2001).

Recently, we isolated a Rab-11-like GTPase from mango that was interesting because it was identified by its differential expression in ripe fruit but not in unripe fruit (Zainal et al., 1996). In accordance with a recent proposal (Bischoff et al., 1999), this clone, which was previously named mango *RabX* gene, is now renamed *MiRab11a*.

That a Rab GTPase should be expressed in a ripening-induced manner in fruit is intriguing. Ripening of tomato fruit involves a number of changes, including changes in color, flavor, and texture, that are accompanied by the expression of a characteristic set of genes (Gray et al., 1992). Change in texture is mediated by modifications to the cell wall, including the well-characterized solubilization of the pectin of the middle lamella, which is brought about by the secretion of a number of enzymes such as polygalacturonase and pectinesterase. These enzymes are synthesized on the rough endoplasmic reticulum, and the nascent polypeptides have typical signal peptides at the N terminus (Bird et al., 1988; Ray et al., 1988).

These cell wall-softening enzymes presumably are trafficked through the endomembrane system of the cell and secreted to the apoplast. It is a reasonable hypothesis, therefore, that Rab GTPases might be essential for this process

¹ Current address: School of Biological Sciences, University of Wales, Bangor, Gwynedd, LL57 1DZ, UK.

² Current address: School of BioSciences and Biotechnology, Faculty of Science and Technology, Universiti Kebangsaan Malaysia, Malaysia.

³ To whom correspondence should be addressed. E-mail grantley.lycett@nottingham.ac.uk; fax 44-115-951-6334.

and that Rab11 might be one of the types involved. Homologs of several of these Rab11 GTPases have been found in plants (Bischoff et al., 1999), but little is known about their role in plant systems other than what can be inferred from animal systems. Even in mammalian systems, the role of Rab11 proteins is unclear. They have been shown to be associated with both the *trans*-Golgi network and the recycling endosomes, and they may play a role not only in vesicle docking but also in vesicle budding (Takai et al., 2001).

To elucidate the role of this class of GTPase, we identified an ortholog of the mango clone from a tomato fruit cDNA library that we have named *LeRab11a*. We investigated the pattern and control of RNA accumulation in fruit and other organs of the plant. We also blocked its expression by anti-sense transformation. This resulted in reduced softening of the fruit and interesting developmental abnormalities that mimic homeotic mutations.

RESULTS

cDNA Cloning and Sequence Analysis

An early ripening tomato fruit phage library (Picton et al., 1993) was screened using the mango *rabX* clone as a probe. One clone was isolated, and the resulting plasmid clone was named pNY650. The sequence has been deposited in the EMBL sequence database under accession number AJ245570.

The longest open reading frame begins at the first ATG and encodes a 218-amino acid protein of 24,192 kD with a *pI* of 5.82. The sequence of the predicted protein was compared with the SWISS-PROT database, and matches were found with several other GTPase proteins of the Rab11 class using the WU-blastp program on the EBI-EMBL server. The best match (94.5% identity) was with the *Nicotiana plumbaginifolia* Np-Ypt3 protein (Dallmann et al., 1992) (accession number Q01111). Others showing more than 80% identity were *Lotus japonicus* Rab11d (Q40194; 84.9% identity) and Rab11e (Q40195; 82.2%) (Borg et al., 1997), pea *pra7* (Q08151; 84.4%) (Nagano et al., 1993), and rice Ric2 (P40393; 80.2%) (Kidou et al., 1993). For comparison, the mango probe used to screen the tomato library (Q43554) (Zainal et al., 1996) showed 70.5% identity, and the best nonplant match, mouse Rab11b (P46638) (Lai et al., 1994), showed 64.7% identity.

RNA and DNA Gel Blot Analyses of Wild-Type Plants

To determine the pattern of RNA accumulation, RNA samples from fruit at different stages of ripening, from leaves of different ages, and from stems, flowers, and roots were subjected to RNA gel blot analysis with the tomato Rab cDNA as probe. Figure 1 shows that the message, like its mango

equivalent, accumulated much more strongly in ripe fruit than in mature green fruit. *LeRab11a* also showed strong expression in young leaves and flowers. Expression in older leaves and other organs was weaker, and no mRNA was detectable in roots.

To investigate further the mechanism of gene control in ripening fruit, RNA was extracted from different stages of fruit development in the ripening mutants *alcobaca* (*alc*) and *Never-ripe* (*Nr*). As shown in Figure 1, the accumulation of mRNA during the course of ripening was reduced greatly in

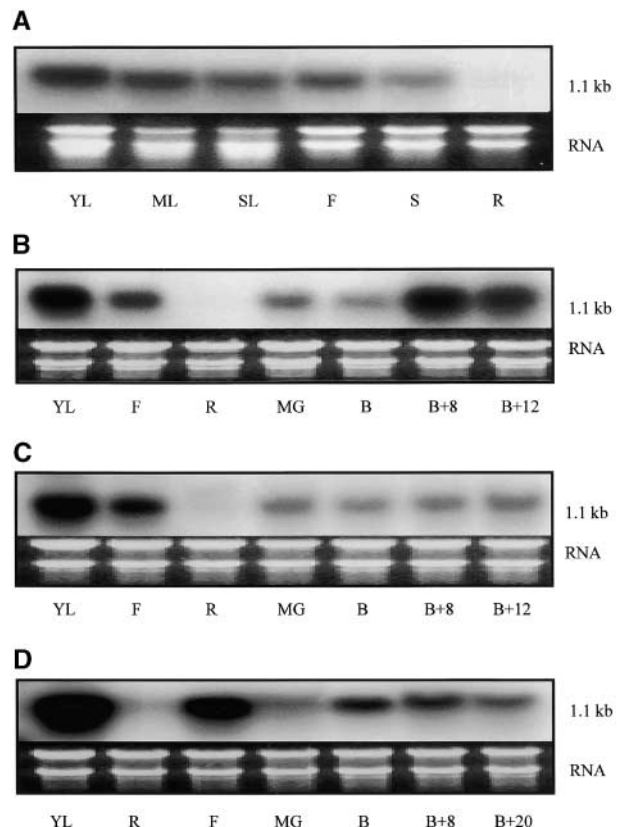


Figure 1. Accumulation of *LeRab11a* Transcripts in Different Organs and Developmental Stages of Wild-Type and Mutant Tomato Plants.

(A) Different organs of wild-type Ailsa Craig.

(B) Fruit ripening series of wild-type Ailsa Craig with root, leaf, and flower controls.

(C) Fruit ripening series of *alc* mutant with root, leaf, and flower controls.

(D) Fruit ripening series of *Nr* mutant with root, leaf, and flower controls. Each lane contained 20 μ g of total RNA from tissues as follows: YL, young leaf; ML, mature leaf; SL, senescent leaf; F, whole flower; S, stem; R, root; MG, mature green fruit; B, breaker fruit; B+8, fruit 8 days after breaker; B+12, fruit 12 days after breaker; and B+20, fruit 20 days after breaker. Membranes were washed twice in $2 \times$ SSC ($1 \times$ SSC is 0.15 M NaCl and 0.015 M sodium citrate) and 0.1% SDS at 65°C for 5 min and then twice in $0.1 \times$ SSC and 0.1% SDS for 15 min at 65°C. All bands correspond to a transcript size of 1.1 kb.

these mutants. In contrast to the wild type (Figure 1B), the level of mRNA in the fruit of *alc* (Figure 1C) and *Nr* (Figure 1D) plants never approached that seen in the positive control (young leaf tissue).

DNA gel hybridization was performed with several different restriction endonucleases. Only one or two bands were seen in each case under stringent hybridization and washing conditions (data not shown).

Generation and Analysis of Transformants

A 960-bp (almost full length) cDNA fragment was cut from pNY650 with EcoRV and XbaI and ligated in a reverse orientation into pDH51 between the cauliflower mosaic virus (CaMV)

35S promoter and the CaMV 35S terminator to give pBDHR. This new gene construct was then cut out and ligated into pBIN19. Two very slightly different transformation plasmids were produced by excising the gene construct fragment from pDHR with either a partial digest of EcoRI, to give pBINDR, or a digest of PvuII and SmaI, to give pBINTR.

A half-length construct was produced by excising 540 bp of DNA from the 5' end of the LeRab11 cDNA with EcoRV and BglII and ligating it into pGA643 (An et al., 1988) between the CaMV 35S promoter and terminator, again in the antisense orientation, to give pGATR.

A total of 53 primary transformants was produced, 13 with pBINDR, 14 with pBINTR, and 26 with pGATR. Thirty-two of these transformants that were grown into mature plants and characterized fully are described in Table 1. The presence of

Table 1. Summary of Phenotypes Associated with Primary Transformants^a

Plant Lines	Construct	Transgene Present	Growth Habit	Ectopic Shoots	Branching Trusses	Other	Fruit Firmness
T6	pGATR	+	D	++	+++	-	++
T7	pGATR	+	D	+++	++	-	++
T13	pGATR	+	D	++	+++	-	++
T18	pGATR	+	D	+	++	-	++
T20	pGATR	+	D	+++	++	-	++
T21	pGATR	+	D	+	-	-	-
T32	pGATR	+	D	+	++	-	++
T12	pGATR	+	SD	+++	++	-	+
T14	pGATR	+	SD	+	-	-	++
T15	pGATR	+	SD	+	++	-	+
T16	pGATR	+	SD	+++	++	-	+++
T17	pGATR	+	SD	++	++	-	++
T27	pGATR	+	SD	++	++	-	+
T31	pGATR	-	-	-	++	-	-
T3	pBINDR	+	-	++	+++	-	+++
T5	pBINDR	+	D	++	+++	-	+++
T25	pBINDR	+	D	++	-	P	+
T26	pBINDR	+	D	+	-	-	++
T29	pBINDR	+	D	+	++	-	++
T30	pBINDR	+	D	++	-	P, Y	+
T1	pBINDR	+	SD	++++	++	-	++
T2	pBINDR	+	-	-	++	-	++
T4	pBINDR	-	-	-	-	-	-
T49	pBINDR	+	-	-	-	-	-
T9	pBINTR	+	D	+	-	P, Y	++
T10	pBINTR	+	D	++	-	P, Y	++
T11	pBINTR	+	D	++	++	-	++
T19	pBINTR	+	D	+	++	-	++
T22	pBINTR	+	D	-	++	-	+++
T8	pBINTR	+	SD	+	+	-	++
T24	pBINTR	+	SD	-	+	-	-
T28	pBINTR	-	-	-	-	-	-
WT1	None	-	-	-	-	-	-
WT2	None	NT	-	-	-	-	-
WT3	None	NT	-	-	-	-	-

^aData from some transformed lines were omitted to save space. D, determinate growth habit; SD, semideterminate, formed terminal flower on the main stem with two side shoots; P, abnormal petals; Y, yellow striped fruit; -, wild type ([WT]; transgene or mutant phenotype not detected); NT, not tested; +++, ++, +, very high, high, or moderate penetration, respectively.

the transgene was confirmed by DNA gel blot and/or polymerase chain reaction (PCR) analysis. Three plants found not to contain the transgene were included as further controls, in addition to three control plants regenerated from callus that was not treated with *Agrobacterium tumefaciens*.

Sense and Antisense Rab11 RNA in Transgenic Plants

RNA gel blot analysis was used to detect the accumulation of transcripts from the transgene. The results, shown in Figure 2A, indicate that the antisense RNA was produced in fruit of transformed lines T1 and T5 but not in the Ailsa Craig wild-type parent. In contrast, the endogenous sense message, which increased considerably during ripening in the Ailsa Craig wild-type parent, either increased only slightly or

actually decreased slightly as ripening progressed in the transformed lines (Figure 2B). The level of antisense RNA was reduced during the early stages of ripening compared with the later stages. Other transformed lines tested gave similar levels of sense and antisense RNA, as summarized in Table 2.

Abnormal Phenotypes

A range of abnormal phenotypes was seen in the antisense transformed plants. Not all of the effects were strongly marked in every primary transformant, but most of the transformed lines showed several of the observed differences from the wild type (Table 1). These effects included reduced fruit softening and extended fruit life, reduced apical dominance and terminal inflorescences, highly branched com-

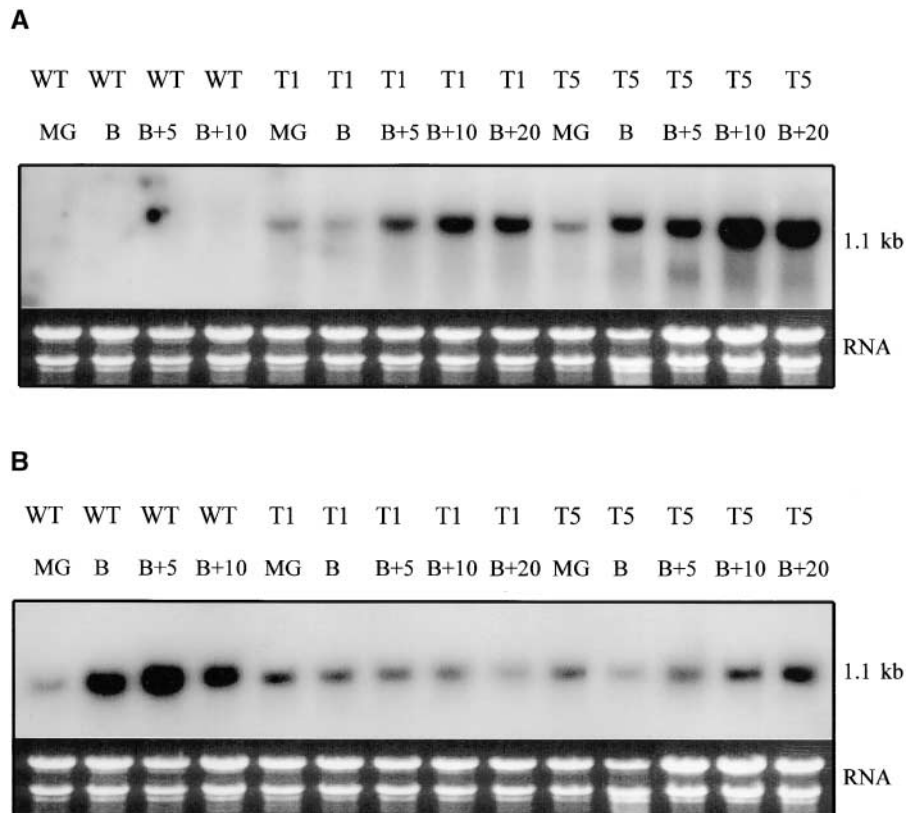


Figure 2. RNA Gel Blot Analysis of Fruit RNA in Normal and Transgenic Lines.

Total RNA was extracted from fruit of two different transformed lines at different stages of ripening: mature green (MG), breaker (B), and five (B+5), ten (B+10), or twenty (B+20) days after breaker. It was then separated on a 1% agarose-formaldehyde gel and transferred onto a nylon membrane. The blot was hybridized with either a sense-specific or an antisense-specific ^{32}P -labeled LeRab11a riboprobe. Membranes were washed twice in $2 \times \text{SSC}$ and 0.1% SDS at 65°C for 5 min and then twice in $0.1 \times \text{SSC}$ and 0.1% SDS for 15 min at 65°C . The stained rRNA bands are shown under each lane to show equivalence of loading.

(A) Transformed lines T1 (pBINDR) and T5 (pBINTR) and wild-type (WT) control tomato with an antisense-specific riboprobe.

(B) Transformed lines T1 and T5 and wild-type control tomato with a sense-specific riboprobe.

pound inflorescences, and ectopic shoots arising from the rachis or rachillae of the leaves. These effects were seen with all three different constructs and in many independent transformants arising from transformations performed on different days. These effects were not seen in untransformed control plants taken through tissue culture and grown alongside the transgenic plants, nor were they seen in “transformants” found not to contain the transgene.

Some of the plants transformed with the full-length constructs pBINTR and pBINDR (T9, T10, T25, T30, T49, and T55) showed two additional effects. One was that the flowers were malformed in one of several ways, as shown in Figures 3A, 3B, and 3C. These included an unusually large calyx, a leaf-like corolla, and a flower structure in which the calyx and corolla were not readily distinguishable. These plants also gave rise to normal flowers. Some of the fruit from these plants showed an unusual yellow flecking (Figure 3D). These abnormal flower and flecked fruit phenotypes also were seen in the progeny of selfed primary transformants.

Leaf Morphology

The transformed plants often gave rise to small rosette-like structures on either the main axis (the rachis) or the side axes (rachillae) of the bipinnate leaves (Figure 3E). Although the development of these structures was slow initially, they usually grew into shoots that appeared normal apart from their ectopic origin. Sometimes, several would appear from each leaf (Figure 3F). These appeared more frequently in older plants. They were not seen in our untransformed controls growing alongside the transgenic plants, but such shoots are seen very rarely in Ailsa Craig.

Inflorescence Structure

Tomato plants normally bear an inflorescence that is a simple panicle. However, the transformed plants often bore inflorescences that were highly branched to give rise to patterns resembling either a compound panicle (Figure 3G) or a dichasium (Figure 3H). These patterns were not seen in untransformed controls.

Indeterminate Growth Pattern and Apical Dominance

Ailsa Craig is an indeterminate cultivar, but many of the transformed plants showed a determinate growth habit. Growth of these plants terminated in a compound inflorescence (Figure 3I), usually at a height of ~1.5 m from the ground. Sometimes, growth would continue from leaf axils lower on the plant (Figure 3J).

As part of good glasshouse practice, axillary shoots initially were removed from both transgenic and untransformed plants. However, additional shoots regenerated from

the leaf axils of the transgenic plants more frequently than from the axils of untransformed plants. In wild-type Ailsa Craig, inflorescences will sometimes terminate in a vegetative shoot. However, this effect was much more marked in the transformed plants. The combination of this effect and the increased numbers of axillary shoots sometimes gave rise to plants with very bushy growth (Figure 3K).

Fruit Softening

Because an effect on fruit softening had been anticipated, fruit firmness was measured 20 days after breaker stage (breaker stage being defined as the stage at which the onset of color change is first visible). The results for untransformed and 21 different transformant lines are shown in Figure 4A. All of the transformed lines had significantly firmer fruit than the untransformed control except for T4, which was found not to contain the transgene and therefore was used as an internal control. A time course for the softening of T3 (half-length construct) and T5 (full-length construct) fruit (Figure 4B) shows that the fruit were still firm enough to measure after 40 days, whereas the untransformed controls were too soft to test after 20 days. However, color development in the transformed and untransformed fruit was not significantly different (Figure 4C). The appearance of representative fruit at different ripening stages is shown in Figure 3L.

To investigate whether the reduced softening was attributable to an effect on the trafficking of cell wall hydrolases, the levels of polygalacturonase (PG) and pectinesterase (PE) were assayed. The results, shown in Figure 5, indicate that

Table 2. Summary of RNA Analysis of Primary Transformants^a

Plant Lines	Construct	Transgene Present	Sense mRNA in Fruit	Antisense mRNA in Fruit
T1	pBINDR	+	+	++
T2	pBINDR	+	++	++
T3	pBINDR	+	+	+++
T4	pBINDR	–	++++	–
T5	pBINDR	+	++	+++
T6	pGATR	+	++	+++
T7	pGATR	+	+++	++
T8	pBINTR	+	++	++
T9	pBINTR	+	++	+++
T10	pBINTR	+	+	++++
T11	pBINTR	+	++	NT
T12	pGATR	+	++	NT
T13	pGATR	+	++	NT
T14	pGATR	+	++	NT
T15	pGATR	+	++	NT
WT	None	–	++++	–

^a +, relative RNA band intensity; –, RNA not detectable; NT, not tested; WT, wild type.

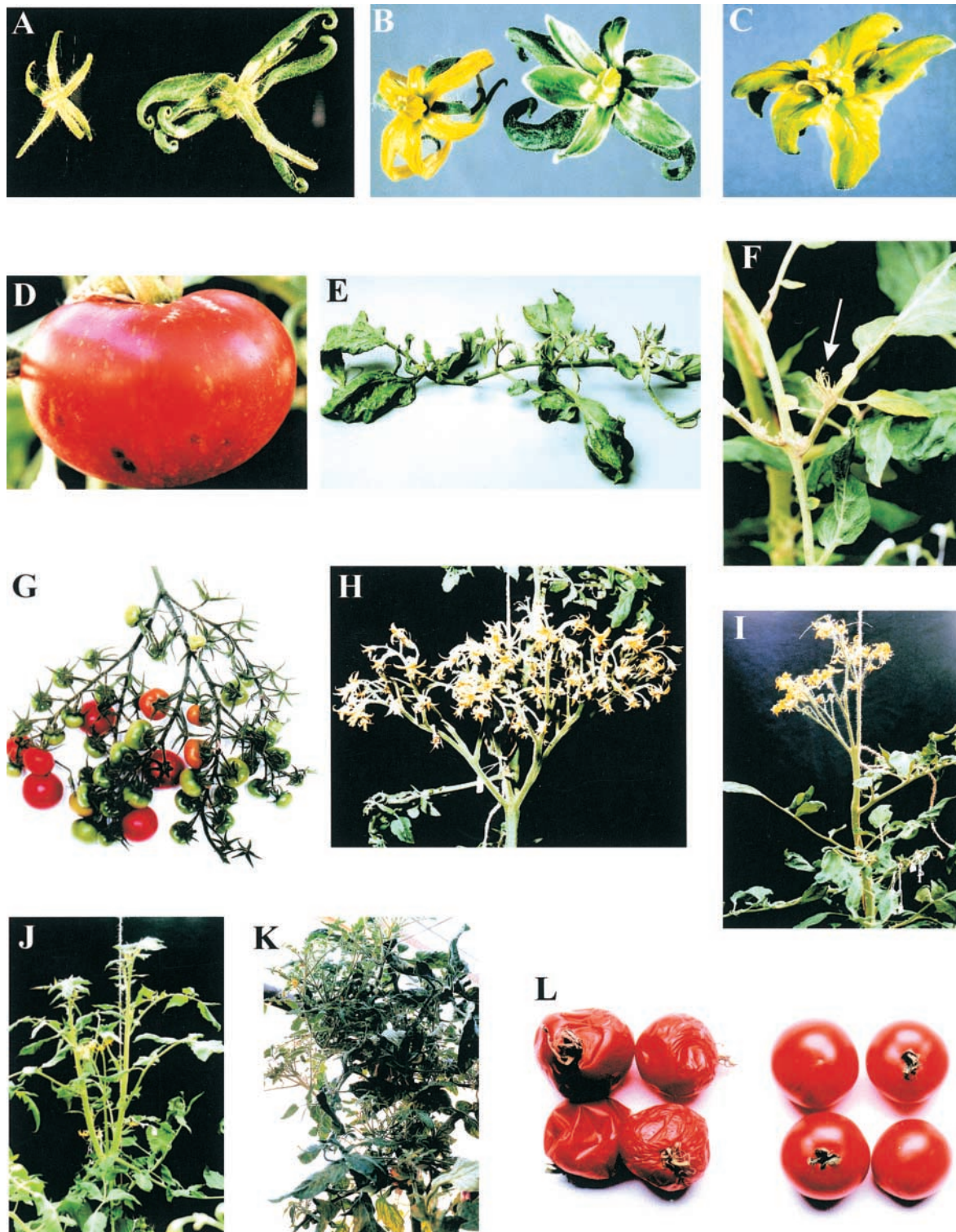


Figure 3. Visual Phenotypes of *Rab* Antisense Transgenic Plants.

(A) Sepals of wild-type flower (left) and transgenic flower (right).
(B) Flowers of wild-type (left) and transgenic (right) plants.

the levels of both PG and PE were reduced in a wide range of the transgenic fruit but not in the wild-type controls or in the untransformed T4 line.

Ethylene Production

Ethylene levels in the fruit were measured during ripening. The peak of ethylene production was much smaller and much later in some of the transgenic fruit than in the wild type. However, the levels of ethylene were normal in other transgenic fruit and did not correlate with the reduction in fruit softening. Figure 6 shows data from some representative lines of each type.

Inheritance of the Mutant Phenotype

The inheritance of growth habit, ectopic shoots, branching inflorescences, and fruit firmness in the progeny (R1 plants) of the primary transformants (R0 plants) also was analyzed. The inheritance of the transgene was tested by PCR amplification of the transgene and by estimating the percentage of R2 seedlings that grew on kanamycin agar. This latter test allowed plants to be designated tentatively as azygous, hemizygous, or homozygous. The results of the analysis of the T1 and T5 primary transformants are listed in Table 3. The four abnormal phenotypes all cosegregated with the T-DNA construct, and in general, the severity of the symptoms was greater in the homozygous progeny than in the hemizygous progeny. The level of ethylene production was reduced in the hemizygous line T3R1-9 and the homozygous line T3R1-4 but similar to that of the wild-type untransformed control in the azygous line T3R1-6 (data not shown).

DISCUSSION

The similarity of the ripening-related expression of *LeRab11* to that of *MiRab11a* (formerly called mango *RabX*; Zainal et

al., 1996) suggests that the two clones not only have sequence homology but probably are functionally equivalent. The reduced expression in the ripening mutant *a/c* further confirms that *LeRab11* is controlled as part of a ripening response, because the fruit of *a/c* plants fail to express many ripening-related proteins and also have a much reduced ethylene climacteric response (Mutschler, 1984; Mutschler et al., 1988). Many genes expressed in a ripening-related manner are regulated by ethylene in fruit. The *Nr* tomato mutant is unable to perceive ethylene because of a mutation in an ethylene receptor ortholog (Wilkinson et al., 1995), and the lack of expression of *LeRab11a* in *Nr* fruit suggests that the *LeRab11a* gene is regulated in an ethylene-dependent manner in fruit. However, the lower level of expression in senescent leaves compared with young leaves is not consistent with ethylene inducibility in tissues other than fruit. It is interesting that the highest levels of *LeRab11* RNA were seen in fruit, leaves, and flowers, because these were the main organs that showed abnormalities in the antisense plants.

The different phenotypic effects that were seen in the antisense plants occurred in many independent transformants. They also were seen to cosegregate with the transgene construct. The observed effects therefore must be attributable to reduced *LeRab11* activity in the plants. However, the phenotypic effects were limited in that there was no overall effect on the height or rate of growth of the plants, so the trafficking of cell wall components in expanding cells could not have been affected, nor could that of other gross cellular components. This finding suggests that a limited number of proteins or other cellular components were affected. It is entirely possible that two or more closely related Rab11 GTPase gene family members were suppressed in our plants. The extra range of phenotypes seen in plants transformed with the full-length constructs is consistent with the suppression of gene family members with different physiological and cellular roles. This also would explain why two different cellular processes, exocytosis and endocytosis, may have been affected in the antisense plants (see below).

A search of the tomato expressed sequence tag database at The Institute for Genomic Research (Rockville, MD) revealed

Figure 3. (continued).

- (C) Petal of a transformant plant.
- (D) Yellow stripes in fruit of transformed plant line T9.
- (E) A mature leaf from a transformed plant showing ectopic shoots.
- (F) The formation of new ectopic shoots on a leaf.
- (G) and (H) Branching inflorescences of transformants.
- (I) Typical determinate growth pattern shown by transformed line T3.
- (J) Determinate growth pattern plus side shoots (line T1).
- (K) A transformed plant (line T1).
- (L) Fruit 30 days after picking from plants of transformed line T5 (right) and wild-type Ailsa Craig (left).

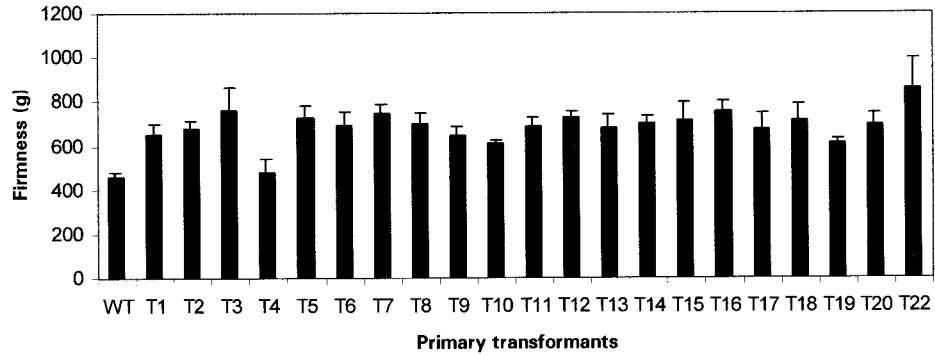
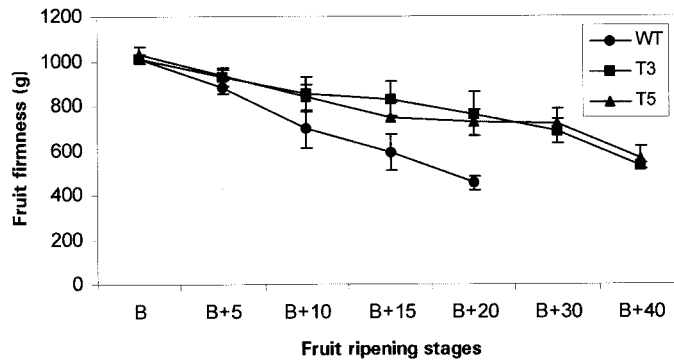
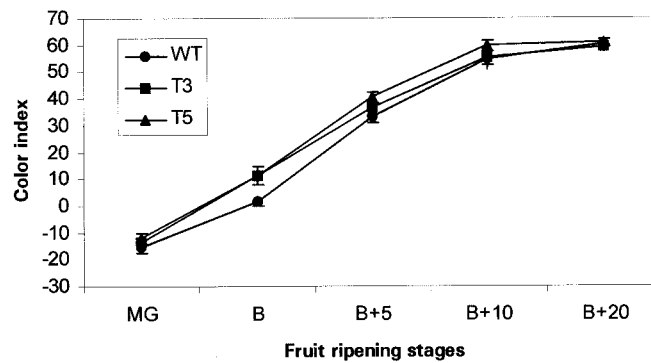
A**B****C**

Figure 4. Fruit Firmness and Color Index of Antisense Transformants and Wild-Type Tomato during Ripening.

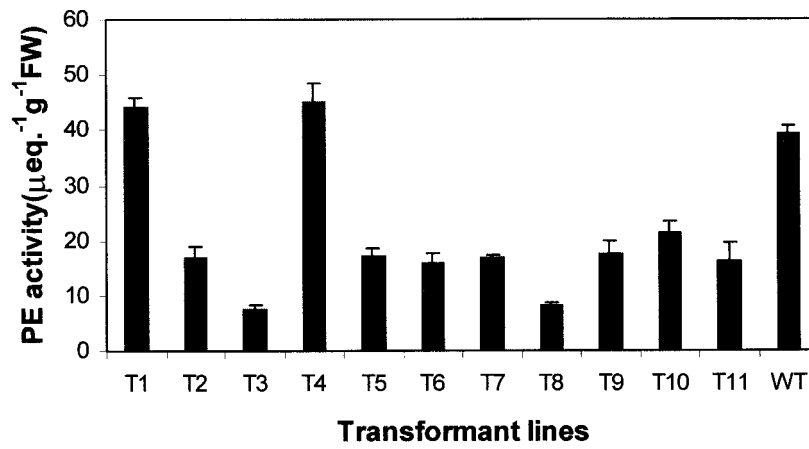
(A) Firmness of ripe fruit (20 days after breaker stage [B+20]) from different transformants T1 to T20, T22, and wild-type (WT) tomato.

(B) Firmness of transformed lines T3 and T5 and wild-type control tomato during different ripening stages. Ripening stages shown here and in panel **(C)** are: mature green (MG), breaker (B), and five (B+5), ten (B+10), fifteen (B+15), twenty (B+20), thirty (B+30) or forty (B+40) days after breaker.

(C) Fruit color index of transformants T3 and T5 and wild-type tomato during ripening.

Error bars indicate \pm SE.

A



B

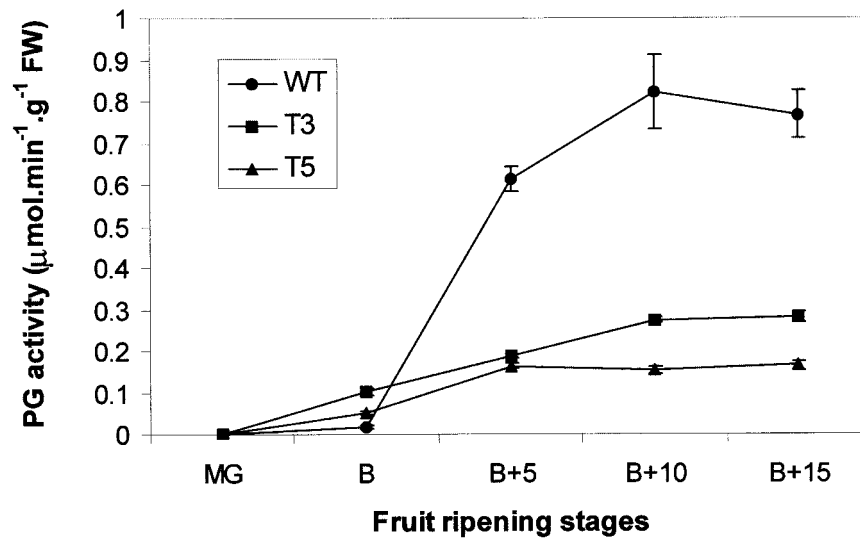


Figure 5. Cell Wall Hydrolase Activity.

(A) PE activity extracted from wild type (WT) and transformed lines T1 to T11 at breaker +10. μeq , microequivalents of H^+ ions.

(B) PG activity extracted from fruit of wild type and transformed lines T3 and T5 at different ripening stages: mature green (MG), breaker (B), and five (B+5), ten (B+10), or fifteen (B+15) days after breaker. FW, fresh weight.

Error bars indicate $\pm\text{SE}$.

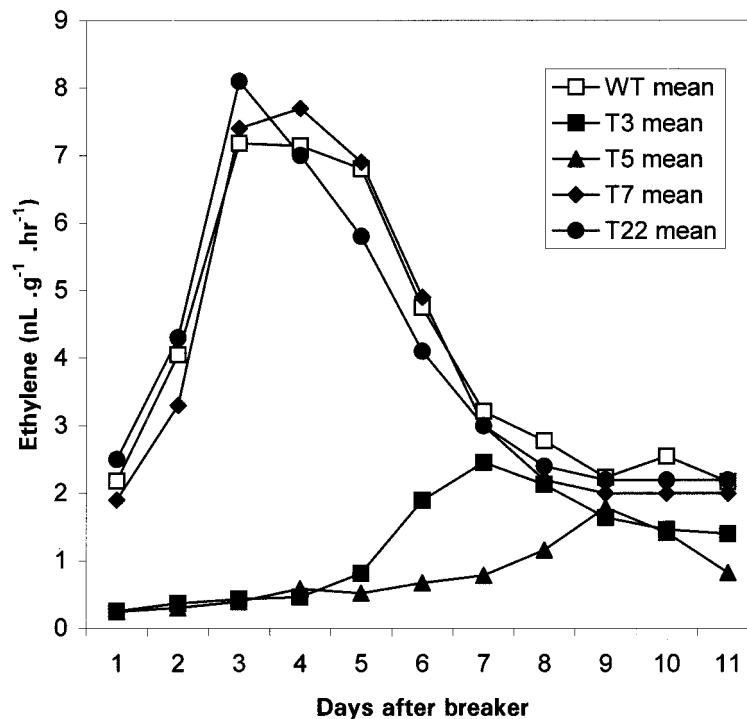


Figure 6. Ethylene Production in Transformants and Wild-Type (WT) Tomato Fruit during Ripening.

Daily measurements were taken from untransformed control wild-type fruit and transformed lines T3, T5, T7, and T22 commencing at the start of color change. Data are expressed as means of values obtained from four fruit.

four other Rab11 GTPase genes in tomato with 73 to 79% nucleotide identity and several others with lesser identity. Unfortunately, the level of nucleotide identity is not the only factor, or even the most important factor, in whether transgene-induced gene silencing will occur in a given plant. The presence of other gene family members that were not suppressed also may explain why the level of sense message was reduced only partly in antisense fruit. Even if two or three closely related gene family members were suppressed in any given plant, there could be several other highly expressed members that were unaffected by the antisense transgene. This is consistent with the pattern seen in *Lotus japonicus*, in which 10 different types of Rab11 cDNA clones were detected, some of which were much more abundant than others (Borg et al., 1997).

The reduced softening of the fruit was very marked. This finding supports the hypothesis (Zainal et al., 1996) that ripening-induced Rab11 GTPases are involved in trafficking of cell wall-modifying enzymes to the apoplast. The reduction in ethylene levels in some transgenic lines also could have contributed to the reduced softening. However, several transgenic lines with essentially normal levels of ethylene production also exhibited substantially reduced fruit softening. Therefore, although the reduced ethylene levels may have had an additive effect on fruit softening in some lines,

it could not have been the primary cause of the reduced softening.

The observation that the levels of PG and PE were reduced in the transgenic fruit compared with those in wild-type fruit is consistent with the disruption of trafficking of cell wall hydrolases in transgenic plants. Because PE is known to be synthesized by the fruit before the ethylene climacteric (Hobson, 1963), this result provides further evidence that the reduction in fruit softening was not mediated by ethylene. Presumably, any proenzyme synthesized in the cell may have been targeted incorrectly for degradation or accumulated in cellular compartments in which post-translational processing to the active enzyme did not occur. These findings are consistent with the observation that the Rab11 protein is essential for the transport of proteins from the *trans*-Golgi network to the plasma membrane in animal cells (Chen et al., 1998) and suggest fundamental similarities in Rab11 GTPase function between the two kingdoms.

Several of the effects seen in our plants are quite different from any seen in mutants or transformants affected in fruit ripening or ethylene production. However, some tomato mutants are known to have defects similar to those seen in our plants. For example, the *blind* mutant terminates in a single flower or inflorescence and has ectopic shoots on the leaves. *leafy*, *macrocalyx*, and compound inflorescence (*s*)

mutants also show some of the symptoms exhibited by our plants (Rick and Butler, 1956), but none of these mutants exhibits the full syndrome of effects. Some of the effects that were seen in the *LeRab11* antisense plants mimic those of disrupting the expression of homeobox genes. Mutation or antisense silencing of the tomato *SELF-PRUNING* gene gives rise to determinate plants with a terminal inflorescence (Pneuli et al., 1998), and a petunia MADS box mutant, *gp*, has a calyx-like corolla (van der Krol et al., 1993). Overexpression of the maize *KNOTTED-1* gene in tobacco gives rumpled leaves with ectopic shoots (Sinha et al., 1993), and overexpression of the homologous *KNAT-1* gene in Arabidopsis also gives rise to deformed leaves and ectopic shoots (Lincoln et al., 1994; Chuck et al., 1996). Expression of the maize *KNOTTED-1* gene in tomato only produces more highly compound leaves (Hareven et al., 1996), but overexpression of the tomato homolog *LeT6* also produces floral meristems on the leaf rachis (Janssen et al., 1998). It is possible, therefore, that the *LeRab11* protein might be involved in the trafficking of these proteins and that disruption of the trafficking results in abnormally low levels in some tissues or even abnormally high levels in cells that normally export them. Interestingly, the *KNOTTED-1* protein is trafficked through the plasmodesmata (Lucas et al., 1995). This raises the intriguing possibility that the tomato protein might be connected with trafficking through the plasmodesmata.

However, it is possible that the effect is less direct. The rumpled leaves and abnormal flower morphology seen in tobacco plants expressing a *NTH15* homeobox transgene was accompanied by reduced GA₁ levels and increased levels of cytokinin (Tamaoki et al., 1997), and plants with increased cytokinin levels caused by transformation with the *Agrobacterium ipt* gene form ectopic buds on leaves (Estruch et al., 1991). Increased levels of cytokinin and abnormal flower development were both seen in tobacco plants expressing sense or antisense copies of a rice *Rab* gene (Kamada et al., 1992; Sano et al., 1994). We have confirmed that ethylene levels were perturbed in our plants, suggesting that phytohormone levels may be involved in producing at least some of the phenotypic effects in plants expressing *Rab* antisense transgenes as well as in those expressing homeobox genes.

It is also possible that *LeRab11* and proteins like it are involved in the trafficking of hormone transporters or receptors to the cell membrane. However, disruption of trafficking to the cell membrane would be expected to lead to reduced levels of homeotic proteins, hormones, and hormone receptors, whereas an increase in the levels of these would most readily explain the phenotype that we observed. A second, more likely possibility is that endocytosis of integral membrane proteins was disrupted in our antisense plants. The role of *Rab11*-type GTPases in plants has been inferred so

Table 3. Properties of R1 Transgenic Plants and Wild-Type Controls^a

R1 Plant	Growth Habit	Ectopic Shoots	Branching Truss	Fruit Firmness	PCR for Transgene	Inheritance Assay
T1R1-1	D	+	+	+	+	Hemizygous
T1R1-2	SD	+++	++	++	+	Homozygous
T1R1-3	D	+++	++	+++	+	Homozygous
T1R1-4	-	-	-	-	-	Azygous
T1R1-5	SD	+++	+++	++	+	Homozygous
T1R1-6	-	-	-	-	-	Azygous
T1R1-7	D	++	+	+	+	Hemizygous
T1R1-8	SD	+	+	+	+	Hemizygous
T1R1-9	D	++	+	++	+	Hemizygous
T1R1-10	-	-	+	-	-	Azygous
WT1	-	-	-	-	-	Azygous
T3R1-1	SD	++	++	++	+	Hemizygous
T3R1-2	SD	++	+	++	+	Hemizygous
T3R1-3	-	-	-	+	-	Azygous
T3R1-4	D	++	+++	+++	+	Homozygous
T3R1-5	D	-	+	++	+	Hemizygous
T3R1-6	-	-	+	-	-	Azygous
T3R1-7	SD	-	++	++	+	Hemizygous
T3R1-8	-	-	-	-	-	Azygous
T3R1-9	SD	++	++	++	+	Hemizygous
T3R1-10	D	+	++	+++	+	Homozygous
WT2	-	-	-	-	-	Azygous

^aD, determinate growth habit; SD, semideterminate, formed terminal flower on the main stem with two side shoots; -, wild type ([WT]; transgene or mutant phenotype not detected); +++, ++, +, very high, high, or moderate penetration, respectively.

far from their known role in mammalian systems, in which the role of rab11b proteins is uncertain and several different roles have been reported (Olkkonen and Stenmark, 1997). Rab11a proteins seem to be associated with recycling endosomes and probably are involved in endocytotic processes as well as secretion. Certain classes of G protein-coupled receptors are desensitized by means of endocytosis and either destruction of the whole receptor-ligand complex in lysosomes or recycling of the receptor through the endosome (Bünemann et al., 1999). Recently, it was shown that this type of endocytotic recycling of $\beta(2)$ -adrenergic receptors to lysosomes involves the rab11-positive perinuclear recycling compartment (Moore et al., 1999). If endocytotic receptor down-regulatory mechanisms exist in plants, then disruption of them may give rise to a failure to completely switch off hormone-mediated developmental programs or to increased sensitivity to low levels of signaling molecules and could explain most of the phenotypic effects seen in our plants.

METHODS

Plant Material and Growth Conditions

Plants of wild-type tomato (*Lycopersicon esculentum* cv Ailsa Craig) and mutants *alcobaca* (Kopeliovitch et al., 1980) and *Never-ripe* (Rick and Butler, 1956) were grown under glass with minimum day temperatures of 22°C and minimum night temperatures of 18°C. Light was supplemented to give a 16-hr day.

For plant transformation, the seed were surface-sterilized by soaking in 50% sodium hypochlorite solution for 10 min and rinsing three to four times in sterile distilled water. Seed were sown in MSR3 medium (4.4 g/L Murashige and Skoog [1962] salts, 30 g/L sucrose, 0.1% [v/v] R3 vitamins [1 g/L thiamine, 0.5 g/L nicotinic acid, 0.5 g/L pyridoxine], pH 5.9, and 8 g/L bacteriological agar) and were germinated in a growth room in 16 hr of light at 26°C.

Plants regenerated from tissue culture that had developed roots were transferred to Levington F2 compost (Levington Horticulture, Ipswich, UK) for the first week. The plants were grown in a tissue culture room (16 hr of light, 8 hr of dark, 24°C) and then transferred to the glasshouse (day, 25°C; night, 18°C).

Screening of the cDNA library

Screening was performed by plaque hybridization using a single stranded mango RabX cDNA as a probe. Filters were prehybridized for 5 hr at 65°C in 5 × SSPE (1 × SSPE is 0.115 M NaCl, 10 mM sodium phosphate, and 1 mM EDTA, pH 7.4), 5 × Denhardt's solution (1 × Denhardt's solution is 0.02% Ficoll, 0.02% polyvinylpyrrolidone, and 0.02% BSA), 0.1% SDS, and 100 μ g/mL denatured salmon sperm DNA. Hybridization was performed in the same solution supplemented with 2.5 μ L of ³²P-dCTP-labeled (10 μ Ci/ μ L) probe for 18 hr at 65°C. Filters were washed twice with 2 × SSPE and 0.1% SDS at 65°C for 10 min and once with 1 × SSPE and 0.1% SDS at 65°C for 15 min. Finally, the membranes were washed at high stringency

with 0.1 × SSPE and 0.1% SDS at 65°C for 10 min. The membranes were dried and autoradiographed. Positive λ ZAPII clones were isolated and processed to pBluescript SK- phagemids.

DNA and RNA Preparation

Total RNA was extracted from fruit, leaves, stems, flowers, or roots as described by Jones et al. (1998) with two modifications. First, the RNA extraction buffer contained phenol supplemented with 14% (v/v) *m*-cresol and 0.1% (w/v) 8-hydroxyquinoline instead of phenol alone. Second, lithium chloride precipitation was performed between the first ethanol precipitation and the second phenol extraction as follows. The dried pellet was dissolved in sterile deionized water. An equal volume of 8 M lithium chloride was added, and the solution was placed at -20°C for 2 hr. The precipitate was collected by centrifugation at 12,000g for 30 min at 0 to 5°C, and the pellet was washed with chilled 70% ethanol.

RNA Gel Blot Analysis

Total RNA was fractionated by gel electrophoresis on a denaturing 1.5% agarose gel containing 8% formaldehyde and blotted onto a GeneScreen membrane (DuPont-New England Nuclear) using 20 mM sodium phosphate as transfer buffer. The RNA was fixed to the membrane using a UV cross-linker (Stratalinker; Stratagene, Cambridge, UK) for 30 sec at high power. The probes were amplified from plasmid DNA by 35 cycles of polymerase chain reaction (PCR) and labeled using Rediprime (Amersham International) and ³²P-dCTP (110 TBq/mmol; Amersham International) according to the manufacturer's instructions. Membranes were prehybridized in Rapid-hyb buffer (Amersham International) at 65°C for 4 hr and hybridized with the probe at 65°C for 16 hr according to the manufacturer's instructions. Membranes were washed twice in 2 × SSC (1 × SSC is 0.15 M NaCl and 0.015 M sodium citrate) and 0.1% SDS at 65°C for 5 min, then twice in 0.1 × SSC and 0.1% SDS for 15 min at 65°C. Filters were then exposed to Kodak X-Omat AR film using intensifying screens for 24 hr at -80°C.

DNA Gel Blot Analysis

Samples of tomato genomic DNA (25 μ g) were digested with 25 units of EcoRI, EcoRV, HindIII, BglII, or XhoI. The reactions were incubated at 37°C for 16 hr, and then the fragments were separated by gel electrophoresis in a 1% agarose gel (in 40 mM Tris-acetate, 1 mM EDTA, and 0.5 μ g/mL ethidium bromide) at 40 V for 4 hr. The digested tomato genomic DNA was transferred on a nylon membrane and hybridized to radiolabeled *LeRab11a* cDNA. Hybridization was performed in 20 mL of a solution containing 5 × SSPE, 5 × Denhardt's solution, 1% SDS, and 0.2 mg/mL denatured salmon sperm DNA at 65°C for 16 hr. The DNA gel blot was washed at high stringency (twice for 5 min each in 2 × SSC and 0.1% SDS and twice at 65°C for 15 min each in 0.1 × SSC and 0.1% SDS) and exposed to x-ray film (Kodak X-Omat AR).

Plant Transformation

A 960-bp (almost full length) cDNA fragment was cut from pNY650 with EcoRV and XbaI, gel purified, and ligated in a reverse orientation

into the *Sma*I and *Xba*I sites of pDH51 (between the cauliflower mosaic virus [CaMV] 35S promoter and the CaMV 35S terminator) to give pDHR. This new gene construct was then cut out with *Pvu*II and ligated into the *Sma*I site of pBIN19 (Bevan, 1984) to produce pBINTR. pBINTR was similar but was produced by cutting the gene construct out of pDHR by a partial *Eco*RI digest and ligating it into the *Eco*RI site of pBIN19.

A half-length construct was produced by excising 540 bp of DNA from the 5' end of the *LeRab11* cDNA with *Eco*RV and *Bgl*II and ligating it into pGA643 (An et al., 1988) between the CaMV 35S promoter and terminator, again in the antisense orientation, to give pGATR. The antisense constructs then were transferred from *Escherichia coli* JM109 to *Agrobacterium tumefaciens* LBA 4404 by direct transformation. This procedure and the transformation of plants were performed as described by Jones et al. (1998).

PCR

PCR was performed in 50 μ L of amplification mixture containing 5 μ L of 10 \times Taq DNA polymerase buffer (Promega), 15 to 30 ng of template DNA, deoxynucleotide triphosphates at 0.2 mM each, and two primers, each at 1 nM. Reactions were started at 95°C by the addition of 1 unit of Taq polymerase (Promega) followed by 35 incubation cycles of 95°C for 35 sec, 50°C for 1 min, and 72°C for 2 min. The PCR products were analyzed on a 1.2% agarose gel. To prepare hybridization probes, T3 and T7 primers were used. To confirm the presence of the transgene in *Agrobacterium* and in transformed plants, the primers used were 5'-GGACCCCCACCCACGAGGA-3' (35S promoter) and 5'-GGGATACTGCTGGTCAAG-3' (*LeRab11a* coding sequence).

Analysis of Tomato Fruit Firmness

All assays were performed on freshly harvested fruit. The fruit were tagged at the breaker stage, and fruit were harvested at the required period after the breaker stage (0, 5, 10, 15, 20, and 40 days after the breaker stage). Firmness was measured with a Stevens-LFRA texture analyzer (C. Stevens and Son Ltd., St. Albans, UK) fitted with a circular probe of 13 mm in diameter. A speed of 2 mm/sec was used to compress fruit by 4 mm. Six fruit were used for each treatment, and the experiment was repeated four or five times.

Ethylene Measurements

Fruit were placed in a sealed container at 25°C for 1 hr. One-milliliter samples were withdrawn for ethylene measurement by gas chromatography. The measurements were performed as described by Picton et al. (1993).

Extraction and Assay of PG and PE

Pectinesterase (PE) was extracted as follows. Ten grams of frozen pericarp was ground to a fine powder as described for the extraction of polygalacturonase (PG). Forty milliliters of acetone (-20°C) was added to each sample and stirred using a compressor stirrer (Budde-

burg, Mannheim, Germany) for 10 min. The mixture was filtered, using a vacuum, through Whatman glass microfiber No. 1 filter paper. The precipitate was washed with 40 mL of -20°C acetone. The pellet was placed in a desiccator with silica gel and left overnight at room temperature under vacuum. The powder was weighed and re-suspended in 20 mL of 1 M NaCl and 50 mM sodium acetate buffer, pH 6.0, and stirred overnight at 4°C. The stirred extract was centrifuged at 10,000g for 30 min. The supernatant was placed in dialysis tubing and then dialyzed overnight against 0.15 M NaCl and 50 mM sodium acetate, pH 6.0, at 4°C. Finally, the supernatant was filtered through Whatman No. 1 filter paper. The volume of filtrate was measured, and the filtrate was stored at 4°C as crude extract. PE activity was assayed titrimetrically as described by Tucker et al. (1982). PG was extracted and assayed as reported by Tucker et al. (1980).

Kanamycin Assay of Seedlings

Seed were surface sterilized as described above for plant materials and sown on MSR3 medium supplemented with 75 μ g/mL kanamycin. Each pot contained 20 seed. The seed were germinated in a culture room under 16 hr of light at 25°C. After 2 weeks, the seedlings were scored for their ability to germinate and establish roots.

ACKNOWLEDGMENTS

We are grateful to Don Grierson for the use of the tomato fruit cDNA library. We acknowledge the support of C.L. in the form of an Overseas Research Studentship award from the Committee of Vice-Chancellors and Principals and other awards from The Henry Lester Trust, The Great Britain-China Educational Trust, and the Gilchrist Educational Trust. Z.Z. was supported by studentship funding from Universiti Kebangsaan Malaysia.

Received February 21, 2001; accepted May 20, 2001.

REFERENCES

- An, G., Ebert, P.R., Mitra, A., and Ha, S.B. (1988). Binary vectors. In *Plant Molecular Biology Manual*, S.B. Gelvin, R.A. Schilperoort, and D.P.S. Verma, eds (Dordrecht, The Netherlands: Kluwer Academic Publishers), pp. A3 1-19.
- Bevan, M.W. (1984). Binary *Agrobacterium* vectors for plant transformation. *Nucleic Acids Res.* **12**, 8711-8721.
- Bird, C.R., Smith, C.J.S., Ray, J.A., Moureau, P., Bevan, M.W., Bird, A.S., Hughes, S., Morris, P.C., Grierson, D., and Schuch, W. (1988). The tomato polygalacturonase gene and ripening-specific expression in transgenic plants. *Plant Mol. Biol.* **11**, 651-662.
- Bischoff, F., Molendijk, A., Rajendrakumar, C.S.V., and Palme, K. (1999). GTP-binding proteins in plants. *Cell. Mol. Life Sci.* **55**, 233-256.

- Borg, S., Brandstrup, B., Jensen, T.J., and Poulsen, C.** (1997). Identification of new protein species among 33 different small GTP-binding proteins encoded by cDNAs from *Lotus japonicus*, and expression of corresponding mRNAs in developing root nodules. *Plant J.* **11**, 237–250.
- Bünemann, M., Lee, K.B., Pals-Rylaarsdam, R., Roseberry, A.G., and Hosey, M.M.** (1999). Desensitisation of G-protein-coupled receptors in the cardiovascular system. *Annu. Rev. Physiol.* **61**, 169–192.
- Chen, W., Feng, Y., Chen, D., and Wandinger-Ness, A.** (1998). Rab11 is required for trans-Golgi network-to-plasma membrane transport and a preferential target for GDP dissociation inhibitor. *Mol. Biol. Cell* **9**, 3241–3257.
- Chuck, G., Lincoln, C., and Hake, S.** (1996). *KNAT1* induces lobed leaves with ectopic meristems when overexpressed in *Arabidopsis*. *Plant Cell* **8**, 1277–1289.
- Dallmann, G., Sticher, L., Marshallsay, C., and Nagy, F.** (1992). Molecular characterisation of tobacco cDNAs encoding two small GTP-binding proteins. *Plant Mol. Biol.* **19**, 847–857.
- Estruch, J.J., Prinsen, E., Van Onckelen, H., Schell, J., and Spena, A.** (1991). Viviparous leaves produced by somatic activation of an inactive cytokinin-synthesising gene. *Science* **254**, 1364–1367.
- Gray, J., Picton, S., Shabbeer, J., Schuch, W., and Grierson, D.** (1992). Molecular biology of fruit ripening and its manipulation with antisense genes. *Plant Mol. Biol.* **19**, 69–87.
- Hareven, D., Gutfinger, T., Parnis, A., Eshed, Y., and Lifschitz, E.** (1996). The making of a compound leaf: Genetic manipulation of leaf architecture in tomato. *Cell* **84**, 735–744.
- Hobson G.E.** (1963). Pectinesterase in normal and abnormal tomato fruit. *Biochem. J.* **86**, 358–365.
- Janssen, B.-J., Lund, L., and Sinha, N.** (1998). Overexpression of a homeobox gene, *LeT6*, reveals indeterminate features in the tomato compound leaf. *Plant Physiol.* **117**, 771–786.
- Jones, C.G., Scothern, G.P., Lycett, G.W., and Tucker, G.A.** (1998). Co-ordinated gene silencing by a single chimeric gene construct. *Planta* **204**, 499–505.
- Kamada, L., Yamauchi, S., Youssefian, S., and Sano, H.** (1992). Transgenic tobacco plants expressing *rgp1*, a gene encoding a *ras*-related GTP-binding protein from rice, show distinct morphological characteristics. *Plant J.* **2**, 799–807.
- Kidou, S., Anai, T., Umeda, M., Aotsuka, S., Tsuge, T., Kato, A., and Uchimiya, H.** (1993). Molecular structure of *ras*-related small GTP-binding protein genes of rice plants and GTPase activities of gene products in *Escherichia coli*. *FEBS Lett.* **332**, 282–286.
- Kopeliovitch, E., Mizrahi, Y., Rabinowitch, H.D., and Kedar, N.** (1980). Physiology of the tomato mutant *alcobaca*. *Physiol. Plant.* **48**, 307–311.
- Lai, F., Stubbs, L., and Artzt, K.** (1994). Molecular analysis of mouse Rab11b: A new type of mammalian YPT/Rab protein. *Genomics* **22**, 610–616.
- Lincoln, C., Long, J., Yamaguchi, J., Serikawa, K., and Hake, S.** (1994). A *knotted1*-like homeobox gene in *Arabidopsis* is expressed in the vegetative meristem and dramatically alters leaf morphology when overexpressed in transgenic plants. *Plant Cell* **6**, 1859–1876.
- Lucas, W.J., Bouché-Pillon, S., Jackson, D.P., Nguyen, L., Baker, L., Ding, B., and Hake, S.** (1995). Selective trafficking of KNOTTED1 homeodomain protein and its mRNA through plasmodesmata. *Science* **270**, 1980–1983.
- Moore, R.H., Tuffaha, A., Millman, E.E., Dai, W., Hall, H.S., Dickey, B.F., and Knoll, B.J.** (1999). Agonist-induced sorting of human β_2 -adrenergic receptors to lysosomes during downregulation. *J. Cell Sci.* **112**, 329–338.
- Murashige, T., and Skoog, F.** (1962). A revised medium for rapid growth and bioassays with tobacco tissue culture. *Physiol. Plant.* **15**, 473–497.
- Mutschler, M.A.** (1984). Ripening and storage characteristics of the *alcobaca* ripening mutant in tomato. *J. Am. Soc. Hortic. Sci.* **109**, 504–507.
- Mutschler, M.A., Gutteri, M., Kinzer, S., Grierson, D., and Tucker, G.A.** (1988). Changes in ripening-related processes in tomato conditioned by the *alc* mutant. *Theor. Appl. Genet.* **76**, 285–292.
- Nagano, Y., Murai, N., Matsuno, R., and Sasaki, Y.** (1993). Isolation and characterisation of cDNAs that encode eleven small GTP-binding proteins from *Pisum sativum*. *Plant Cell Physiol.* **34**, 447–455.
- Olkkonen, V.M., and Stenmark, H.** (1997). Role of rab GTPases in membrane traffic. *Int. Rev. Cytol.* **176**, 1–85.
- Picton, S., Gray, J., Barton, S., AbuBakar, U., Lowe, A., and Grierson, D.** (1993). cDNA cloning and characterisation of novel ripening related mRNAs with altered patterns of accumulation in the *ripening inhibitor (rin)* tomato ripening mutant. *Plant Mol. Biol.* **23**, 193–207.
- Pneuli, L., Carmel-Goren, L., Hareven, D., Gutfinger, T., Alvarez, J., Ganai, M., Zamir, D., and Lifschitz, E.** (1998). The *SELF-PRUNING* gene of tomato regulates vegetative to reproductive switching of sympodial meristems and is the ortholog of *CEN* and *TFL1*. *Development* **125**, 1979–1989.
- Ray, J., Knapp, J., Grierson, D., Bird, C., and Schuch, W.** (1988). Identification and sequence determination of a cDNA clone for tomato pectin esterase. *Eur. J. Biochem.* **174**, 119–124.
- Rick, C.M., and Butler, L.** (1956). Cytogenetics of the tomato. *Adv. Genet.* **8**, 267–382.
- Sanderfoot, A.A., and Raikhel, N.V.** (1999). The specificity of vesicle trafficking: Coat proteins and SNAREs. *Plant Cell* **11**, 629–641.
- Sano, H., Seo, S., Orudjev, E., Youssefian, S., Ishizuka, K., and Ohashi, Y.** (1994). Expression of the gene for a small GTP binding protein in transgenic tobacco elevates endogenous cytokinin levels, abnormally induces salicylic-acid in response to wounding, and increases resistance to tobacco mosaic-virus infection. *Proc. Natl. Acad. Sci. USA* **91**, 10556–10560.
- Sinha, N.R., Williams, R.E., and Hake, S.** (1993). Overexpression of the maize homeobox gene, *KNOTTED-1*, causes a switch from determinate to indeterminate cell fates. *Genes Dev.* **7**, 787–795.
- Takai, Y., Sasaki, T., and Matozaki, T.** (2001). Small GTP-binding proteins. *Physiol. Rev.* **81**, 153–208.

- Tamaoki, M., Kusaba, S., Kano-Murakami, Y., and Matsuoka, M.** (1997). Ectopic expression of a tobacco homeobox gene, *NTH15*, dramatically alters leaf morphology and hormone levels in transgenic tobacco. *Plant Cell Physiol.* **38**, 917–927.
- Tucker, G.A., Robertson, N.G., and Grierson, D.** (1980). Changes in polygalacturonase isoenzymes during the 'ripening' of normal and mutant tomato fruit. *Eur. J. Biochem.* **112**, 119–124.
- Tucker, G.A., Robertson, N.G., and Grierson, D.** (1982). Purification and changes in activities of tomato pectinesterase isoenzymes. *J. Sci. Food Agric.* **33**, 396–400.
- van der Krol, A.R., Brunelle, A., Tsuchimoto, S., and Chua, N.-H.** (1993). Functional analysis of petunia floral homeotic MADS box gene *pMADS1*. *Genes Dev.* **7**, 1214–1228.
- Wilkinson, J.Q., Lanahan, M.B., Yen, H.-C., Giovannoni, J.J., and Klee, H.J.** (1995). An ethylene-inducible component of signal transduction encoded by *Never-ripe*. *Science* **270**, 1807–1809.
- Zainal, Z., Tucker, G.A., and Lycett, G.W.** (1996). A *rab11*-like gene is developmentally regulated in ripening mango (*Mangifera indica* L.) fruit. *Biochim. Biophys. Acta* **1314**, 187–190.