

Secretion of α -Amylase from *Pseudoalteromonas haloplanktis* TAB23: Two Different Pathways in Different Hosts

Maria Luisa Tutino,^{1*} Ermenegilda Parrilli,¹ Laura Giaquinto,¹ Angela Duilio,¹ Giovanni Sannia,¹ Georges Feller,² and Gennaro Marino¹

Dipartimento di Chimica Organica e Biochimica, Università di Napoli “Federico II”—Complesso Universitario Monte Sant’Angelo, Naples, Italy,¹ and Laboratoire de Biochimie, Institut de Chimie B6, Université de Liège, Liège, Belgium²

Received 30 May 2002/Accepted 18 July 2002

Secretion of cold-adapted α -amylase from *Pseudoalteromonas haloplanktis* TAB23 was studied in three Antarctic bacteria. We demonstrated that the enzyme is specifically secreted in the psychrophilic hosts even in the absence of a protein domain that has been previously reported to be necessary for α -amylase secretion in *Escherichia coli*. The occurrence of two different secretion pathways in different hosts is proposed.

The presence of an outer membrane in gram-negative bacteria imposes a barrier for the secretion of proteins into the extracellular medium. At least five different, widely disseminated secretion pathways have evolved in these bacteria for the translocation of soluble proteins across the outer membrane (2, 5, 10, 13, 14, 16).

In this study we have investigated the protein secretion in Antarctic bacteria by using the α -amylase from *Pseudoalteromonas haloplanktis* TAB23 as model enzyme. Indeed, among the secreted psychrophilic proteins studied so far (11), the cold-adapted α -amylase is one of the best characterized for both function and structure, since it is one of the very few cold-adapted enzymes whose three-dimensional structure has been solved (1). The psychrophilic α -amylase is synthesized as a preproenzyme, composed of the signal peptide (24 residues), the mature enzyme (453 amino acids, 49 kDa), and a long C-terminal propeptide (192 residues, 21 kDa) which constitutes a structurally independent domain that does not exhibit any foldase function or affect the amylase catalytic activity (8). Considering the preproenzyme structure, the export of α -amylase precursor through the inner membrane may likely occur via the Sec pathway (15), coupled to the cleavage of the leader peptide, defining the amino-terminal end of the mature enzyme. The resulting proenzyme is found in the culture supernatant as a precursor until the *P. haloplanktis* late exponential phase, when the action of a nonspecific extracellular protease removes the C-terminal domain, releasing the mature enzyme (8).

When the psychrophilic enzyme is produced by recombinant *Escherichia coli* cells, its secretion depends on the presence of the propeptide, since the truncated α -amylase, i.e., devoid of the C-terminal domain, accumulates in the *E. coli* periplasm (8). These results, combined with the observation that the amy propeptide can promote its own membrane spanning and accepts a foreign passenger, led the authors to conclude that this

domain displays an autonomous secretion signal function, showing several features in common with a classic β -autotransporter (8).

In the present work we have extended the study of α -amylase secretion to a more physiologic environment by setting up a novel expression vector for the recombinant protein production in three cold-adapted bacteria, *P. haloplanktis* TAB23 (the α -amylase source strain), *P. haloplanktis* TAC125, and *Psychrobacter* sp. strain TAD1 (Table 1).

Construction of pFF expression vector. Molecular characterization of the pMtBL plasmid isolated from an Antarctic bacterium was instrumental in setting up a shuttle vector, clone Q, able to efficiently replicate either in psychrophiles or in *E. coli* (18). To develop an expression vector for Antarctic bacteria, the *E. coli* vector pUC18 was modified by destroying the unique *NdeI* restriction site and removing two elements, i.e., the lactose-inducible β -galactosidase promoter and the *lacI* gene fragment, to avoid interference with the cold-adapted promoter to be inserted, generating the pUCL vector (Fig. 1; Table 1). The T/R box, a DNA fragment containing the cold-adapted origin of replication (OriR) and the origin of conjugative transfer (OriT) derived from the pJB3 plasmid (4), was isolated from the clone Q shuttle vector (18) by double *EcoRI/BamHI* digestion and was cloned into pUCL *EcoRI* restriction site after a fill-in reaction. Transcription and translation control sequences of cold-adapted *aspC* gene (coding for aspartate aminotransferase from *P. haloplanktis* TAC125 [3]) were amplified by PCR and inserted into the above shuttle vector to generate a cold expression plasmid, the pFF construct (Fig. 1). The *PhaspC* promoter (*Pasp*) was amplified by using the primers 5'-GTTGGATCCGATATCAAAAATAGACTATG-3' and 5'-TAATACTGCAGACATATGCTATCTCTTATC-3', which introduces an *NdeI* restriction site at an optimal distance from the natural Shine-Dalgarno sequence and overlapping the aspartate aminotransferase start codon. Furthermore, the stability of the mRNAs expressed by the constitutive *PhaspC* promoter was increased by cloning the strong *PhaspC* rho-independent transcription terminator (*Tasp*, PCR amplified by using the primers 5'-GTTCCCGGGGTACCGAATTCATAA

* Corresponding author. Mailing address: Dipartimento di Chimica Organica e Biochimica, Università di Napoli “Federico II”—Complesso Universitario Monte Sant’Angelo, via Cinthia, 80126 Naples, Italy. Phone: 39-081-674317. Fax: 39-081-674313. E-mail: tutino@unina.it.

TABLE 1. Bacterial strains and plasmids used in this work

Plasmid or strain	Description	Reference
Plasmids		
pUCL	Vector deriving from the <i>AflIII/EcoRI</i> digestion of pUC18, fill-in reaction of the sticky ends and ligation; <i>NdeI</i> disruption	This work
Clone Q	pGEM-4z containing the T/R box	18
pFF	PUC1 containing the T/R box, the promoter and termination region of the <i>P. haloplanktis</i> TAC125 <i>aspC</i> gene	This work
p α H12	pUC12 derivative containing the <i>P. haloplanktis</i> α -amylase gene	8
p α H12wt*	pUC12 derivative containing the <i>P. haloplanktis</i> α -amylase gene devoid of the gene region encoding the C-terminal domain	8
pFF F_{amy}	pFF containing the p α H12 insert	This work
pFF $F_{amy}\Delta Ct$	pFF containing the p α H12wt* insert	This work
Bacterial strains		
TAD1	<i>Psychrobacter</i> sp. strain TAD1	6
TAB23	<i>P. haloplanktis</i> TAB23 (formerly <i>Alteromonas haloplanktis</i> A23)	9
TAC125	<i>P. haloplanktis</i> TAC125	3
DH5 α	<i>E. coli</i> [<i>supE44</i> Δ <i>lacU169</i> (ϕ 80 <i>lacZ</i> Δ M15) <i>hsdR17</i> <i>recA1</i> <i>endA1</i> <i>gyrA96</i> <i>thi-1</i> <i>relA1</i>]	12
S17-1(λ <i>pir</i>)	<i>E. coli</i> strain S17-1 (λ <i>pir</i>) [<i>thi pro hsd</i> (r ⁻ m ⁺) <i>recA</i> ::RP4-2-Tc ^r ::Mu Km ^r ::Tn7 Tp ^r Sm ^r λ <i>pir</i>]	17

TAGTTAACC-3' and 5'-CCTTGAGCTCCCTGAGGTCCG G-3') downstream of a small polylinker region.

Recombinant production of *P. haloplanktis* TAB23 α -amylase (precursor and mature forms) in three cold-adapted bacteria. In previous work, two recombinant plasmids were constructed to produce the heterologous *P. haloplanktis* TAB23

α -amylase in *E. coli* (8). The two vectors (p α H12 and p α H12wt*) differed in the presence of the *amy* gene portion coding for the C-terminal propeptide of α -amylase (which was deleted and replaced by an artificial stop codon in the p α H12wt* vector). The expression of these vectors resulted in the production of the α -amylase precursor (p α H12) or the truncated native α -amylase (p α H12wt*). To construct pFF F_{amy} plasmid, the region coding for the *P. haloplanktis* TAB23 α -amylase was excised from p α H12 by *EcoRI-XbaI* double digestion and inserted into the pFF corresponding sites. The gene coding for α -amylase devoid of its C-terminal domain was obtained from the p α H12wt* vector by *SalI/XbaI* hydrolysis and inserted into the *EcoRI/XbaI*-digested pFF plasmid, generating the pFF $F_{amy}\Delta Ct$ vector. A fill-in reaction was necessary to make compatible *SalI* and *EcoRI* protruding ends.

The resulting plasmids, pFF F_{amy} and pFF $F_{amy}\Delta Ct$ (Fig. 2A), were mobilized into *P. haloplanktis* TAB23 (the source strain), *P. haloplanktis* TAC125, and *Psychrobacter* sp. strain TAD1 cells (both devoid of any α -amylase activity [6, 18]) by inter-specific conjugation with the transformed *E. coli* S17-1(λ *pir*) cells (Table 1) following the procedure previously described (18).

Psychrophilic transconjugants were grown in liquid culture at 4°C, and samples were harvested at the mid-logarithmic phase. Culture supernatants and corresponding cell lysates were immunodetected by using anti *P. haloplanktis* TAB23 α -amylase antiserum (8) to evaluate production and cellular localization of the recombinant products. Western blotting analysis (Fig. 2B) of *P. haloplanktis* TAC125 transformed with pFF F_{amy} (lanes 1 and 2) and pFF $F_{amy}\Delta Ct$ (lanes 3 and 4) showed that recombinant proteins are present mainly in the culture medium (lanes 2 and 4), regardless of the presence of the C-terminal propeptide. Furthermore, a proteolytic processing, which converts the α -amylase precursor (70 kDa) into the mature enzyme (49 kDa; Fig. 2B, lanes 1 and 2), occurs even in the recombinant *P. haloplanktis* TAC125 cell culture. Similar results were obtained with recombinant *P. haloplanktis* TAB23 and *Psychrobacter* sp. strain TAD1 cells (data not shown).

The kinetics of recombinant α -amylase production by *P.*

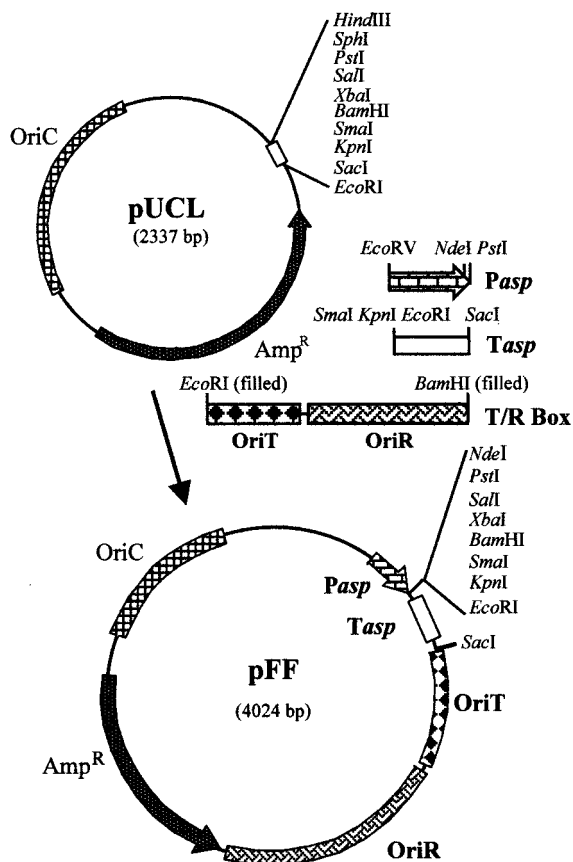


FIG. 1. Construction of pFF vector (see text).

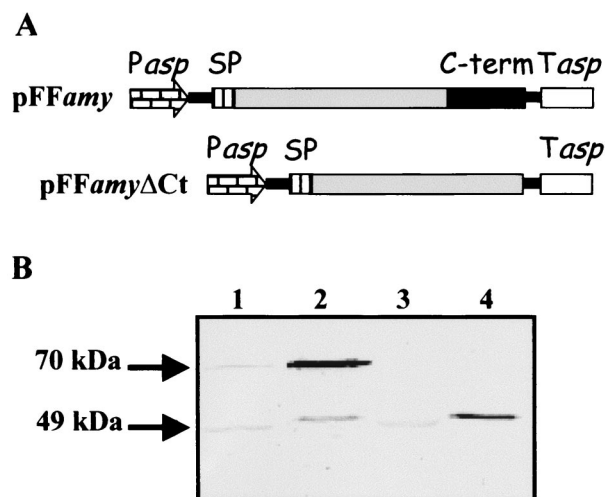


FIG. 2. Recombinant production and cellular localization of *P. haloplanktis* TAB23 α -amylase (precursor and mature forms) in *P. haloplanktis* TAC125. (A) Schematic representation of gene constructs directing the production of the α -amylase precursor (pFFamy) and its mature form (pFFamy Δ Ct). Pasp, *P. haloplanktis* TAC125 *aspC* transcriptional promoter; SP, signal peptide; C-term, C-terminal propeptide. (B) Western blot analysis of cell extracts (lanes 1 and 3) and supernatants (lanes 2 and 4) of pFFamy (lanes 1 and 2) and pFFamy Δ Ct (lanes 3 and 4) recombinant *P. haloplanktis* TAC125 cells. The analyzed samples came from cultures at the same growth phase and from equal amount of cells. The immunodetection was performed by using anti-C-terminal polyclonal antiserum as described in reference 8.

haloplanktis TAC125 cells was monitored by observing the appearance of enzyme activity in the culture supernatants with the Boehringer-Roche kit AMYL as previously described (8). As shown in Fig. 3, middle panel, the extracellular targeting kinetics and the corresponding growth curves (upper panel) of the Antarctic bacterial cells, transformed with pFFamy and pFFamy Δ Ct vectors, were superimposable. Furthermore, the presence of the propeptide at the C terminus of the recombinant enzyme did not affect the yield of amylase secretion (Table 2). Similar results were obtained with recombinant *P. haloplanktis* TAB23 and *Psychrobacter* sp. strain TAD1 cells, although the cold α -amylase production yields for each of the three strains were slightly different (Table 2).

To demonstrate that the extracellular targeting of the recombinant α -amylase is due to a specific secretion mechanism rather than to a general leakiness of the outer membrane, the activity of a soluble periplasmic enzyme, the alkaline phosphatase, was monitored in the cell-free supernatants by using the Sigma Fast *p*-nitrophenyl phosphatase tablet sets. As illus-

TABLE 2. Recombinant α -amylase secretion by recombinant Antarctic bacteria at 4°C

Vector	Maximal yield ^a (mg/liter) of recombinant α -amylase		
	<i>P. haloplanktis</i> TAB23	<i>P. haloplanktis</i> TAC125	<i>Psychrobacter</i> sp. strain TAD1
pFFamy	5.1 \pm 0.1	4.8 \pm 0.2	5.8 \pm 0.6
pFFamy Δ Ct	6.2 \pm 0.6	5.5 \pm 0.5	6.0 \pm 0.4

^a Data are average results of three independent experiments.

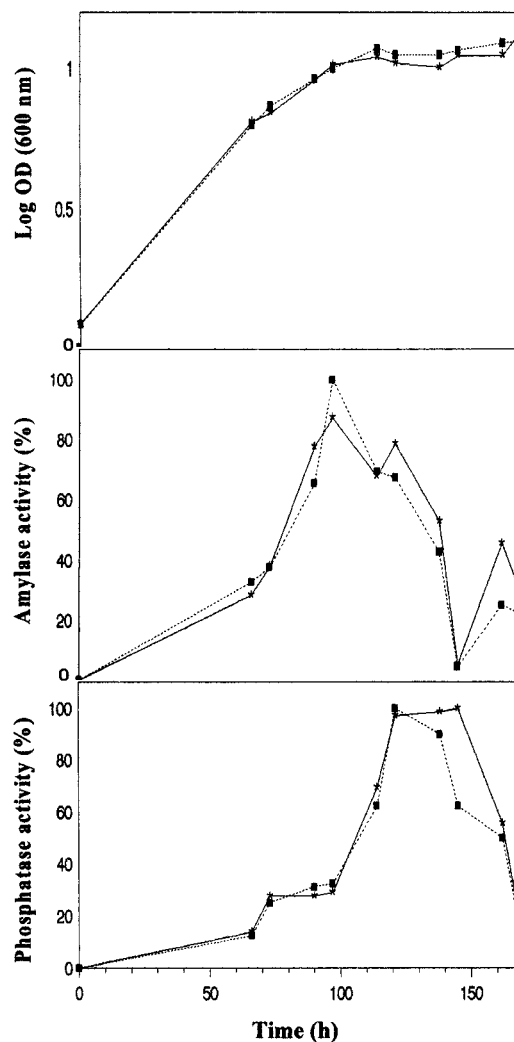


FIG. 3. Secretion kinetics of recombinant precursor and mature α -amylase forms in recombinant *P. haloplanktis* TAC125 cells. Kinetics of bacterial growth (upper panel), recombinant α -amylase (middle panel), and alkaline phosphatase (lower panel) activities in the cell-free supernatants of *P. haloplanktis* TAC125 cells transformed with pFFamy (*) and pFFamy Δ Ct (■) are presented. Enzyme activities are expressed as percentages of the maximal activity recorded in the cell-free supernatants. The curves were constructed from average results of three independent experiments at 4°C.

trated in Fig. 3, the maximum of amylase activity in both cultures was reached about 50 h before the alkaline phosphatase release consequent to entry in stationary phase. At this time, the extracellular α -amylase activity decreased, likely due to the action of cellular proteases, whose concentration raises steadily during the prolonged cell growth (unpublished results from this laboratory). The same results were obtained with recombinant strains of *P. haloplanktis* TAB23 and *Psychrobacter* sp. strain TAD1 (data not shown).

Conclusions. The assembly of the cold-adapted expression vector, reported in this paper, has been instrumental for the successful recombinant α -amylase production in three Antarctic bacteria (Fig. 1). This vector allows us to study the recombinant production and cellular localization of the native α -amylase and its truncated version, i.e., devoid of the C-terminal

domain. In contrast to the previously reported results obtained with *E. coli* (8), our data demonstrate that when produced in all Antarctic bacteria tested (i) both recombinant enzymes are present mainly in the extracellular medium (Fig. 2B), (ii) the extracellular targeting of both α -amylase forms is a specific secretion rather than a general leakiness of the host outer membrane, (iii) C-terminal propeptide is not mandatory for α -amylase secretion, and (iv) the presence of the C-terminal domain does not interfere either with the secretion kinetics or with the maximal production yield (Fig. 3; Table 2).

The above results strongly suggest that the psychrophilic α -amylase carries secretion signals, besides the propeptide, that mediate the outer membrane translocation of cold-adapted bacteria, regardless of the propeptide presence at the enzyme C-terminal end. Based only on the substrate structure, the occurrence of a type II secretion pathway in these hosts can be proposed (15, 16). However, apart from the specific secretion mechanism implied, recombinant protein secretion by two distantly related bacteria (*P. haloplanktis* and *Psychrobacter* sp. strain TAD1) represents an interesting result.

The data obtained in this study, together with those reported by Feller et al. (8) for *E. coli*, suggest that the α -amylase from *P. haloplanktis* TAB23 is the only exoenzyme so far characterized that has the possibility of following two alternative secretion pathways depending on the bacterial host which is expressed. Indeed, in addition to some structural motifs likely recognized by a cold-adapted secretion machinery, this enzyme possesses an independent domain, the C-terminal propeptide, that can display its secretion helper role at least in the mesophilic *E. coli*.

This work was supported by grants of the European Union (program "COLDZYME," contract ERB BIO4 CT96 0051; program "EURO-COLD," contract ERB BIO4 CT95 0017; and program "COLDNET," contract ERB FMRX CT97 0131), of Ministero dell'Università e della Ricerca Scientifica (Progetti di Rilevante Interesse Nazionale 1999), and of Consiglio Nazionale delle Ricerche (CNR contract 97.01138.PF49 Progetto Finalizzato "Biotecnologie").

REFERENCES

- Aghajari, N., G. Feller, C. Gerday, and R. Haser. 1998. Structures of the psychrophilic *Alteromonas haloplanktis* alpha-amylase give insights into cold adaptation at a molecular level. *Structure* **6**:1503–1516.
- Binet, R., S. Letoffe, J. M. Ghigo, P. Delepelaire, and C. Wandersman. 1997. Protein secretion by gram-negative bacterial ABC exporters—a review. *Gene* **192**:7–11.
- Birolo, L., M. L. Tutino, B. Fontanella, C. Gerday, K. Mainolfi, S. Pascarella, G. Sannia, F. Vinci, and G. Marino. 2000. Aspartate aminotransferase from the Antarctic bacterium *Pseudoalteromonas haloplanktis* TAC 125. Cloning, expression, properties, and molecular modelling. *Eur. J. Biochem.* **267**:2790–2802.
- Blatny, J. M., T. Brautaset, H. C. Winther-Larsen, K. Haugan, and S. Valla. 1997. Construction and use of a versatile set of broad-host-range cloning and expression vectors based on the RK2 replicon. *Appl. Environ. Microbiol.* **63**:370–379.
- Covacci, A., J. L. Telford, G. Del Giudice, J. Parsonnet, and R. Rappuoli. 1999. *Helicobacter pylori* virulence and genetic geography. *Science* **284**:1328–1333.
- Di Fraia, R., V. Wilquet, M. A. Ciardiello, V. Carratore, A. Antignani, L. Camardella, N. Glandsdorff, and G. Di Prisco. 2000. NADP⁺-dependent glutamate dehydrogenase in the Antarctic psychrotolerant bacterium *Psychrobacter* sp. TAD1. Characterization, protein and DNA sequence, and relationship to other glutamate dehydrogenases. *Eur. J. Biochem.* **267**:121–131.
- Feller, G., S. D'Amico, and C. Gerday. 1999. Thermodynamic stability of a cold-active alpha-amylase from the Antarctic bacterium *Alteromonas haloplanktis*. *Biochemistry* **38**:4613–4619.
- Feller, G., S. D'Amico, A. M. Benotmane, F. Joly, J. Van Beeumen, and C. Gerday. 1998. Characterization of the C-terminal propeptide involved in bacterial wall spanning of alpha-amylase from the psychrophile *Alteromonas haloplanktis*. *J. Biol. Chem.* **273**:12109–12115.
- Feller, G., T. Lonhienne, C. Deroanne, C. Libioulle, J. Van Beeumen, and C. Gerday. 1992. Purification, characterization, and nucleotide sequence of the thermolabile alpha-amylase from the Antarctic psychrotroph *Alteromonas haloplanktis* A23. *J. Biol. Chem.* **267**:5217–5221.
- Filloux, A., G. Michel, and M. Bally. 1998. GSP-dependent protein secretion in gram-negative bacteria: the Xcp system of *Pseudomonas aeruginosa*. *FEMS Microbiol. Rev.* **22**:177–198.
- Gerday, C., M. Aittaleb, M. Bentahir, J. P. Chessa, P. Claverie, T. Collins, S. D'Amico, J. Dumont, G. Garsoux, D. Georgette, A. Hoyoux, T. Lonhienne, M. A. Meuwis, and G. Feller. 2000. Cold-adapted enzymes: from fundamentals to biotechnology. *Trends Biotechnol.* **18**:103–107.
- Hanahan, D. 1983. Studies on transformation of *Escherichia coli* with plasmids. *J. Mol. Biol.* **166**:557–580.
- Henderson, I. R., F. Navarro-Garcia, and J. P. Nataro. 1998. The great escape: structure and function of the autotransporter proteins. *Trends Microbiol.* **6**:370–378.
- Hueck, C. J. 1998. Type III protein secretion systems in bacterial pathogens of animals and plants. *Microbiol. Mol. Biol. Rev.* **62**:379–433.
- Matlack, K. E., W. Mothes, and T. A. Rapoport. 1998. Protein translocation: tunnel vision. *Cell* **92**:381–390.
- Russel, M. 1998. Macromolecular assembly and secretion across the bacterial cell envelope: type II protein secretion systems. *J. Mol. Biol.* **279**:485–499.
- Tascon, R. I., E. F. Rodriguez-Ferri, C. B. Gutierrez-Martin, I. Rodriguez-Barbosa, P. Berche, and J. A. Vazquez-Boland. 1993. Transposon mutagenesis in *Actinobacillus pleuropneumoniae* with a Tn10 derivative. *J. Bacteriol.* **175**:5717–5722.
- Tutino, M. L., A. Duilio, E. Parrilli, E. Remaut, G. Sannia, and G. Marino. 2001. A novel replication element from an Antarctic plasmid as a tool for the expression of proteins at low temperature. *Extremophiles* **5**:257–264.