

Multiple Amino Acid Residues within the Rabbit Prion Protein Inhibit Formation of Its Abnormal Isoform

Ina Vorberg,¹ Martin H. Groschup,² Eberhard Pfaff,³ and Suzette A. Priola^{1*}

Laboratory of Persistent Viral Diseases, Rocky Mountain Laboratories, National Institute of Allergy and Infectious Diseases, National Institutes of Health, Hamilton, Montana 59840,¹ and Institute of Novel and Emerging Infectious Diseases, Federal Research Centre for Virus Diseases of Animals, 17498 Insel Riems,² and Federal Research Centre for Virus Diseases of Animals, 72076 Tübingen,³ Germany

Received 29 July 2002/Accepted 26 October 2002

Transmissible spongiform encephalopathies (TSEs) are neurological diseases that are associated with the conversion of the normal host-encoded prion protein (PrP^{sen}) to an abnormal protease-resistant form, PrP^{res}. Transmission of the TSE agent from one species to another is usually inefficient and accompanied by a prolonged incubation time. Species barriers to infection by the TSE agent are of particular importance given the apparent transmission of bovine spongiform encephalopathy to humans. Among the few animal species that appear to be resistant to infection by the TSE agent are rabbits. They survive challenge with the human kuru and Creutzfeldt-Jakob agents as well as with scrapie agent isolated from sheep or mice. Species barriers to the TSE agent are strongly influenced by the PrP amino acid sequence of both the donor and recipient animals. Here we show that rabbit PrP^{sen} does not form PrP^{res} in murine tissue culture cells persistently infected with the mouse-adapted scrapie agent. Unlike other TSE species barriers that have been studied, critical amino acid residues that inhibit PrP^{res} formation are located throughout the rabbit PrP sequence. Our results suggest that the resistance of rabbits to infection by the TSE agent is due to multiple rabbit PrP-specific amino acid residues that result in a PrP structure that is unable to refold to the abnormal isoform associated with disease.

Transmissible spongiform encephalopathies (TSEs) are fatal neurodegenerative disorders that include kuru and variant Creutzfeldt-Jakob disease (vCJD) in humans, chronic wasting disease (CWD) in deer and elk, scrapie in sheep and goats, and bovine spongiform encephalopathy (BSE). A critical event in TSE pathogenesis is the conversion of the normal, protease-sensitive host prion protein (PrP^{sen}) to an abnormal, partially protease-resistant form (PrP^{res}) that is closely associated with TSE. PrP^{sen} is a glycoprotein with an apparent molecular mass of 33 to 37 kDa, which is anchored to the cell membrane by a glycosylphosphatidylinositol anchor (3). No characteristic sequence differences or chemical modifications between PrP^{sen} and PrP^{res} have been identified (13), suggesting that the two isoforms differ mainly in their conformation (8, 23, 31, 33).

Initial transmission of the TSE agent from one species to another is usually associated with prolonged incubation times, which decrease as the TSE agent adapts over multiple passages through the new species. Understanding this so-called “species barrier” is of particular importance, because the BSE agent has crossed the human species barrier to cause vCJD and there are concerns that the CWD agent in North America could cross species barriers and pose a threat to human health. Transmission of TSE agents to laboratory animals such as mice, hamsters, and rats has greatly enhanced our understanding of the TSE species barrier. These animals are susceptible to a variety of TSE agents, including those from sheep, humans, and cattle. Rabbits are the only mammalian species reported to be resis-

tant to TSE agents isolated from different species. Rabbits do not develop signs of TSE disease after inoculation with the CJD, kuru, or scrapie agent (10). Additionally, no clinical signs were observed when rabbits were challenged with scrapie agent that had been previously passaged in mice (1). These experiments suggest that resistance to infection by the TSE agent is a characteristic of the host species rather than the strain of TSE agent used for infection.

Previous studies with transgenic mice, scrapie-infected tissue cultures, or cell-free conversion assays for PrP^{res} formation have demonstrated that the PrP amino acid sequence strongly influences both PrP^{res} formation and interspecies transmission of the TSE agent (16, 25, 28, 34). The transmission of TSE agent from one species to another appears to be dependent on amino acid sequence homology between the host PrP^{sen} and the PrP^{res} in the inoculum. In several model systems, both species-specific formation of PrP^{res} and the transmission of the TSE agent across species barriers have been mapped to the central region of the PrP molecule comprising residues 108 to 171 (16, 25, 35). Recently, experiments with transgenic mice suggest that amino acid residues in the C terminus can also influence interspecies transmission of the TSE agent (36). Thus, the apparent resistance of rabbits to various TSE agents may reside in specific amino acid residues within the same regions of the rabbit PrP^{sen} molecule (1, 10, 19).

We have studied the ability of rabbit PrP^{sen} to be converted to PrP^{res} in mouse neuroblastoma cells persistently infected with mouse-adapted scrapie (Sc⁺-MNB cells). Here we show that rabbit PrP^{sen} was not converted to PrP^{res} in these cells. Multiple amino acid residues throughout the rabbit PrP sequence correlated with the inability of rabbit PrP^{sen} to form PrP^{res}. However, in one instance, the negative effect of a

* Corresponding author. Mailing address: Laboratory of Persistent Viral Diseases, Rocky Mountain Laboratories, Hamilton, MT 59840. Phone: (406) 363-9319. Fax: (406) 363-9286. E-mail: spriola@niaid.nih.gov.

specific amino acid residue on the formation of PrP-res could be overcome by altering an adjacent amino acid residue. Thus, the inability of rabbit PrP to be converted to PrP-res is likely due to the overall structural characteristics of the rabbit PrP molecule.

MATERIALS AND METHODS

Cell lines. Scrapie-infected mouse neuroblastoma cells (Sc^+ -MNB cells) are persistently infected with the mouse-adapted scrapie strain RML and have been described previously (29). These cells express mouse PrP-sen and accumulate mouse PrP-res. Cells were grown in Optimum (Life Technologies, Inc.) supplemented with 10% fetal bovine serum (FBS). The retroviral packaging cell lines ψ 2 and PA317 (20, 21) used to produce retroviral supernatants were maintained in RPMI containing 10% FBS and 300 U of penicillin per ml.

Antibodies. The mouse monoclonal antibody L42 (R-biopharm, Darmstadt, Germany) was raised against a sheep PrP peptide and recognizes an epitope present in rabbit PrP, but not in mouse PrP (11). This epitope can be inserted into mouse PrP by an amino acid substitution from tryptophan to tyrosine at position 144 (40). R30 is a rabbit polyclonal antiserum directed against a mouse PrP peptide spanning amino acids 89 to 103 (30). R30 reacts with mouse PrP, but does not cross-react with rabbit PrP. Since the exact epitopes for the antibodies present in the polyclonal serum have not been defined, it is possible that this serum reacts with PrP chimeras that contain mouse PrP-specific amino acid residues in a region spanning residues 89 to 103 (MoRa and mouse PrP constructs containing single- and double-amino-acid residue substitutions). Thus, when these constructs were expressed in Sc^+ -MNB cells, we refer to PrP-res detected by this antiserum as "total PrP-res".

Site-directed mutagenesis. The rabbit PrP open reading frame was amplified by PCR with rabbit chromosomal DNA. Chimeric mouse-rabbit (MoRa) PrP molecules were generated by utilizing the restriction sites *Nae*I and *Tth*III. Since the *Nae*I site is absent in the mouse and rabbit PrP sequence, it was inserted as a silent mutation at position 334 of the PrP coding region. The epitope for the mouse monoclonal antibody L42 was either present in the recombinant PrP molecules that contained rabbit sequence from 112 to 177 (constructs Ra and RaMo in Fig. 2A) or was introduced by site-directed mutagenesis (constructs MoRa, RaMoRa, and MoL42 in Fig. 2A and 4). Additional single amino acid residue changes within MoL42 PrP were introduced by PCR mutagenesis. The specific change is indicated in the name of the construct (e.g., MoV214I has a mouse PrP-specific valine at position 214 replaced by a rabbit PrP-specific isoleucine). Recombinant PrP molecules were cloned into the retroviral expression vector pSFF (4), and the sequence was verified by DNA sequencing.

Transduction and analysis of Sc^+ -MNB cells expressing recombinant PrP. Production of retroviral particles coding for PrP molecules and transduction of Sc^+ -MNB cells were performed as previously described (25). Seven days after transduction with the retroviral particles, cell lysates were tested for PrP-sen and PrP-res. Expression of recombinant PrP-sen in Sc^+ -MNB cells was confirmed either by Western blot analysis of cell lysates or by immunoprecipitation of radiolabeled PrP (41) with the mouse monoclonal antibody L42. Following proteinase K (PK) treatment of cell lysates (20 μ g of PK per ml, 37°C, 1 h), samples were subjected to centrifugation (266,000 \times g, 4°C, 1 h), and pellets were sonicated in sample buffer (2.5% sodium dodecyl sulfate [SDS], 3 mM EDTA, 2% β -mercaptoethanol, 5% glycerol, 0.02% bromophenol blue, 63 mM Tris-HCl [pH 6.8]). Samples were electrophoresed on 14% NOVEX precast gels (Invitrogen) and transferred to polyvinylidene difluoride (PVDF) membrane, and blots were developed by using the Pharmacia ECL enhanced chemiluminescence kit according to the manufacturer's instructions. Total PrP-res was analyzed with the rabbit polyclonal antiserum R30. Recombinant PrP-res was detected with the mouse monoclonal antibody L42.

RESULTS

Rabbit PrP is not converted to protease resistance in Sc^+ -MNB cells. To determine if rabbit PrP-sen could be converted to protease resistance, rabbit PrP-sen was expressed in Sc^+ -MNB cells. These cells are persistently infected with the mouse-adapted scrapie strain RML, express mouse PrP-sen, and accumulate mouse PrP-res. Rabbit PrP-sen was transduced into Sc^+ -MNB cells as previously described, and the cells were analyzed for the expression of rabbit PrP by using

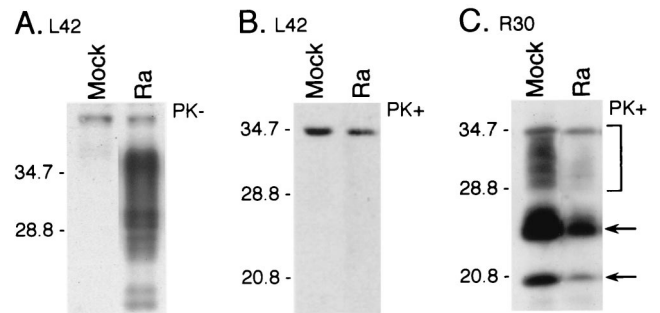


FIG. 1. Rabbit PrP does not acquire protease resistance and interferes with endogenous PrP-res formation in Sc^+ -MNB cells. (A) Expression of rabbit PrP-sen. The Western blot was probed with the mouse monoclonal antibody L42, which reacts with rabbit PrP, but not with mouse PrP. (B) Detection of L42-positive PrP-res. Protease treatment (PK+) of the cell lysates revealed that no rabbit PrP-res was produced. (C) Detection of endogenous mouse PrP-res. The expression of rabbit PrP-sen led to a decrease in mouse PrP-res levels. This blot was probed with the rabbit polyclonal antiserum R30, which does not cross-react with rabbit PrP. The arrows and brackets indicate unglycosylated and partially and fully glycosylated PrP-res molecules, respectively. Experiments were repeated five times and showed similar results. Molecular size markers are indicated in kilodaltons.

the mouse monoclonal antibody L42, which reacts only with rabbit PrP. Rabbit PrP-sen was readily expressed in Sc^+ -MNB cells (Fig. 1A). However, no protease-resistant rabbit PrP was detected (Fig. 1B). Thus, the mouse PrP-res present in the Sc^+ -MNB cells was unable to convert rabbit PrP-sen to protease resistance.

The expression of some exogenous PrP-sen molecules has been shown to interfere with the formation of endogenous mouse PrP-res in Sc^+ -MNB cells (12, 25, 27, 41). It has been postulated that this interference is due to exogenous PrP molecules blocking the PrP-res binding site (14). Therefore, we studied the effect of rabbit PrP-sen expression on the accumulation of endogenous mouse PrP-res in Sc^+ -MNB cells. Sc^+ -MNB cells expressing rabbit PrP accumulated substantially lower levels of endogenous mouse PrP-res compared to untransduced cells (Fig. 1C). The fact that the expression of rabbit PrP-sen interfered with endogenous mouse PrP-res accumulation suggests that the inability of rabbit PrP-sen to form PrP-res was not due to an inability to bind to mouse PrP-res. Furthermore, these results suggest that the resistance of rabbits to mouse scrapie challenge could be due to the inability of mouse PrP-res to convert the rabbit PrP-sen molecule to its abnormal, PK-resistant isoform.

Regions in rabbit PrP that inhibit conversion to PrP-res. To identify the regions in rabbit PrP that inhibit conversion to PrP-res, several chimeric rabbit-mouse PrP constructs were generated. PrP molecules were constructed that encoded either rabbit- or mouse-specific amino acid sequences from residues 1 to 111 (hereafter defined as the N-terminal region), residues 112 to 177 (central region), or residues 178 to 254 (C-terminal region) (Fig. 2A). To detect the chimeric PrP molecules over the background of endogenous mouse PrP expressed in Sc^+ -MNB cells, all constructs contained the epitope for the mouse monoclonal antibody L42. Recombinant PrP molecules were expressed in Sc^+ -MNB cells and assayed for their ability to form PrP-res. Expression of L42-positive

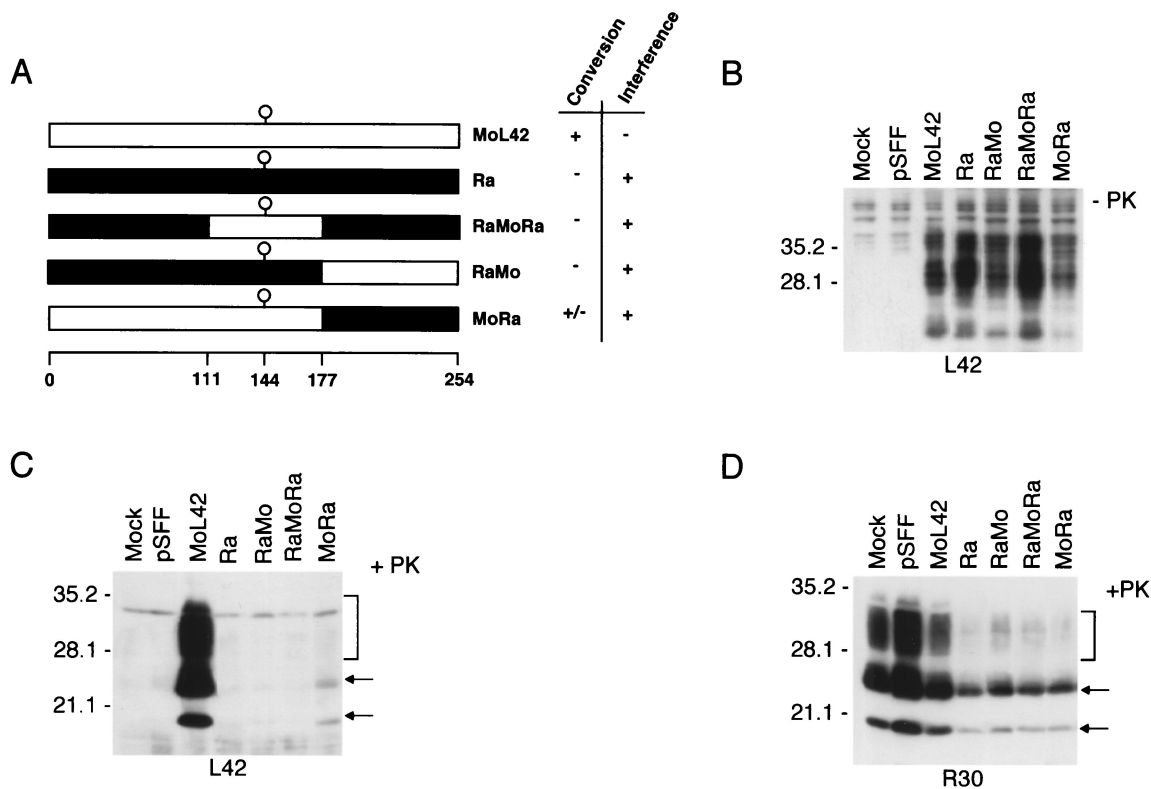


FIG. 2. Amino acid residues throughout the rabbit PrP molecule inhibit its conversion to PrP-res. (A) Schematic diagram of rabbit PrP constructs. The lollipop symbol indicates the position of the L42 epitope that was introduced into the mouse PrP sequence to allow the recognition of these proteins by the antibody. This epitope is also present in rabbit PrP. (B) Expression level of rabbit and rabbit-mouse PrP chimeric constructs. The Western blot was probed with the monoclonal antibody L42. Mock, untransduced cells; pSFF, cells transduced with the retroviral vector alone. (C) Lysates of Sc⁺-MNB cells expressing the recombinant PrP molecules were incubated with PK and assayed for L42-positive PrP-res. +PK, protease treatment. (D) Detection of total PrP-res with the polyclonal antiserum R30. The expression of rabbit PrP-sen and chimeric rabbit-mouse PrP-sen led to a drastic reduction in total PrP-res levels. At least three independent experiments were performed for each construct. The arrows and brackets indicate unglycosylated and partially and fully glycosylated PrP-res molecules, respectively. Molecular size markers are indicated in kilodaltons.

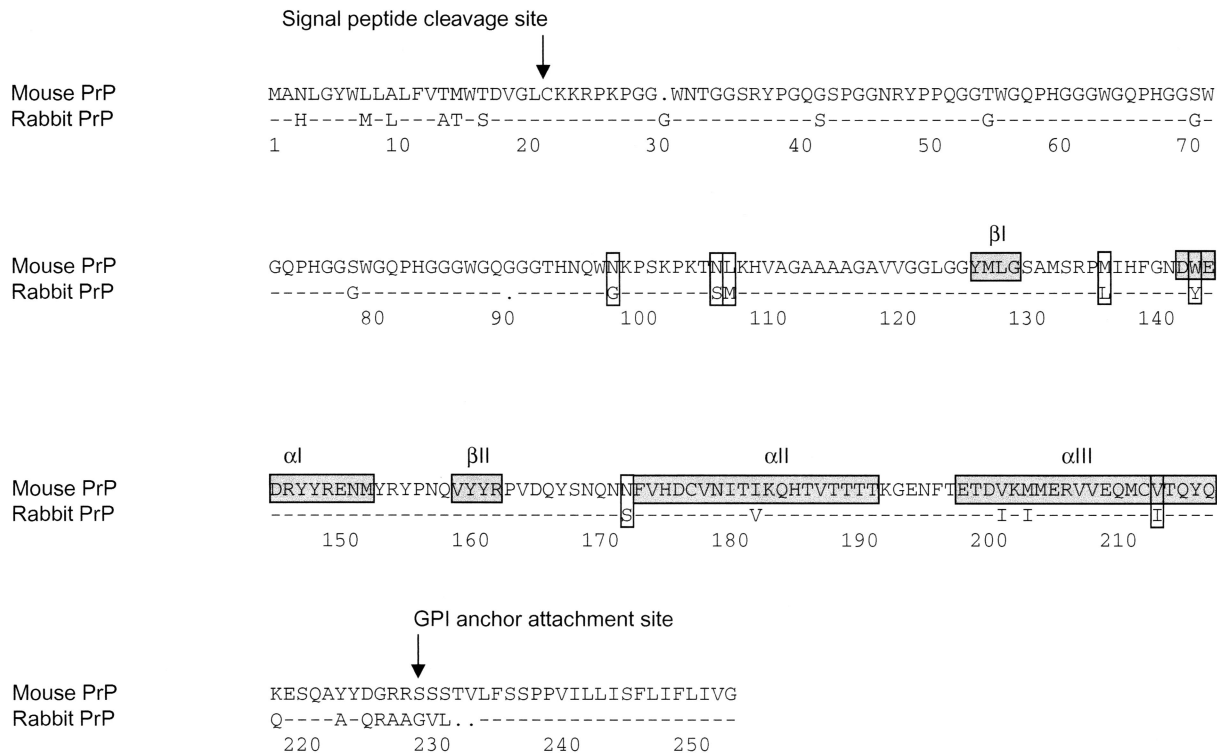
PrP-sen was detected in all cells except control cells (Fig. 2B, Mock) or cells transduced with the retroviral vector pSFF alone (Fig. 2B). As expected, MoL42 PrP-sen molecules were readily converted to PrP-res, demonstrating that the introduction of the L42 epitope did not significantly influence the formation of PrP-res (Fig. 2C) (42). Substitution of mouse PrP amino acid sequence with rabbit PrP amino acid sequence at the C terminus drastically decreased but did not abolish the formation of L42-positive PrP-res (Fig. 2C, MoRa PrP). Interestingly, additional substitution of mouse amino acid sequence with rabbit amino acid sequence at the N terminus totally prevented PrP-res formation (Fig. 2C, RaMoRa PrP). Finally, the construct RaMo PrP, which codes for rabbit amino acid residues in the N terminus and middle portion of PrP and mouse PrP residues in the C terminus, failed to be converted to protease resistance. All of the mouse-rabbit chimeras also interfered with the accumulation of total PrP-res (Fig. 2A and D). These experiments suggest that amino acid residue differences within the N terminus, C terminus, and possibly the central portion of the rabbit PrP-sen molecule all negatively affected the formation of PrP-res.

Multiple amino acid residues in rabbit PrP inhibit PrP-res formation. The amino acid sequences of rabbit and mouse PrP differ at 22 residues within the mature protein (Fig. 3A). Sev-

eral of these differences reside in regions of the PrP molecule known to be important in PrP-res formation. To further map the amino acid residues within rabbit PrP-sen that prevent PrP-res formation, we chose to concentrate on several amino acid candidates. In vivo and in vitro studies have demonstrated that residues 1 to 94 within the N-terminal region of the PrP molecule are not crucial for the formation of PrP-res (9, 18, 32). However, three amino acid differences between rabbit and mouse PrP reside within the remaining N-terminal region (positions 95 to 111) (Fig. 3A): amino acid residues 99, 107, and 108. One of these, a serine at position 107, appears to be unique to the rabbit PrP sequence.

Rabbit-specific amino acid residues were introduced into MoL42 PrP at positions 99, 107, and 108 and the constructs expressed in Sc⁺-MNB cells (Fig. 4A). The expression of MoN107S led to the formation L42-positive PrP-res and did not affect the accumulation of total PrP-res (Fig. 4B and C). In contrast, MoN99G and MoL108M were not converted to PrP-res and interfered with the accumulation of total PrP-res (Fig. 4B and C). Interestingly, MoN107S/L108M was readily converted to protease resistance and did not interfere with total PrP-res accumulation (Fig. 4B and C). Thus, at least two different rabbit-specific amino acid residues in the N-terminal portion of PrP negatively affected PrP-res formation. In some

A



B

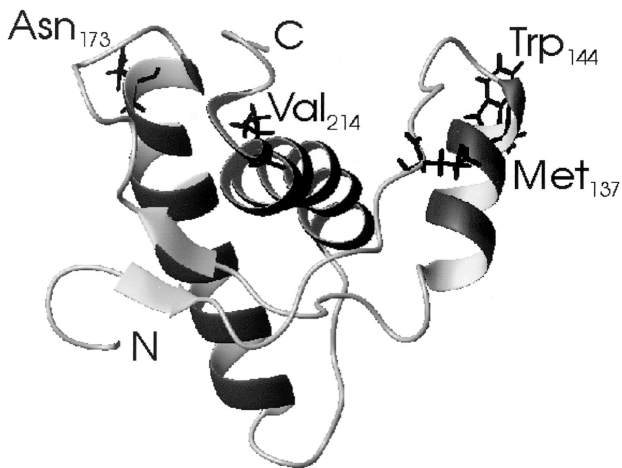


FIG. 3. Comparison of mouse and rabbit PrP. (A) Amino acid sequence comparison of mouse and rabbit prion proteins. The numbering of the amino acid residues is according to the mouse PrP sequence. The overall sequence homology between mouse and rabbit PrP is 87% (33 total amino acid residue differences). During posttranslational processing, a signal peptide and a glycosylphosphatidylinositol (GPI) anchor signal peptide are cleaved off, decreasing the number of amino acid differences in the mature PrP molecules to 22. The secondary structure elements of mouse PrP-sen are indicated by gray boxes. Boxed residues indicate the residues tested. Dashes indicate identical amino acid residues, and deletions are symbolized by dots. (B) Nuclear magnetic resonance spectroscopy structure of mouse PrP amino acid residues 120 to 230 (31). The positions of the amino acid residues 137, 144, 173, and 214 are indicated. These residues were altered in mouse PrP, and their influence on the formation of PrP-res was studied. Additional amino acid residue substitutions included residues 99, 107, and 108, which reside within the flexible tail of the mouse PrP molecule. Since the N-terminal flexible tail of PrP-sen has few or no stable structural elements, it is not depicted in the nuclear magnetic resonance structure shown. This figure was prepared with the program MOLMOL (17).

instances, however, the negative effect of a specific residue could be compensated for by another amino acid substitution. We next examined the effect of amino acid substitutions within the middle portion of the PrP molecule. Three amino acid differences between rabbit and mouse PrP are present in the central region of the molecule (residues 112 to 177) (Fig. 3A and B). Replacement of the mouse-specific tryptophan by tyrosine at position 144 introduces the epitope for the mouse monoclonal antibody L42 and does not significantly affect the

formation of PrP-res (Fig. 2) (42). Similarly, MoM137L was readily converted to PrP-res (Fig. 4B) and had no influence on total PrP-res accumulation (Fig. 4C). In contrast, expression of MoN173S abolished formation of L42-positive and total PrP-res (Fig. 4B and C). Amino acid residues within the C terminus of Ra PrP also appeared to influence the formation of PrP-res in Sc⁺-MNB cells (Fig. 2). Ten amino acid differences reside within the C-terminal region of the mature PrP molecule (Fig. 3A). Since

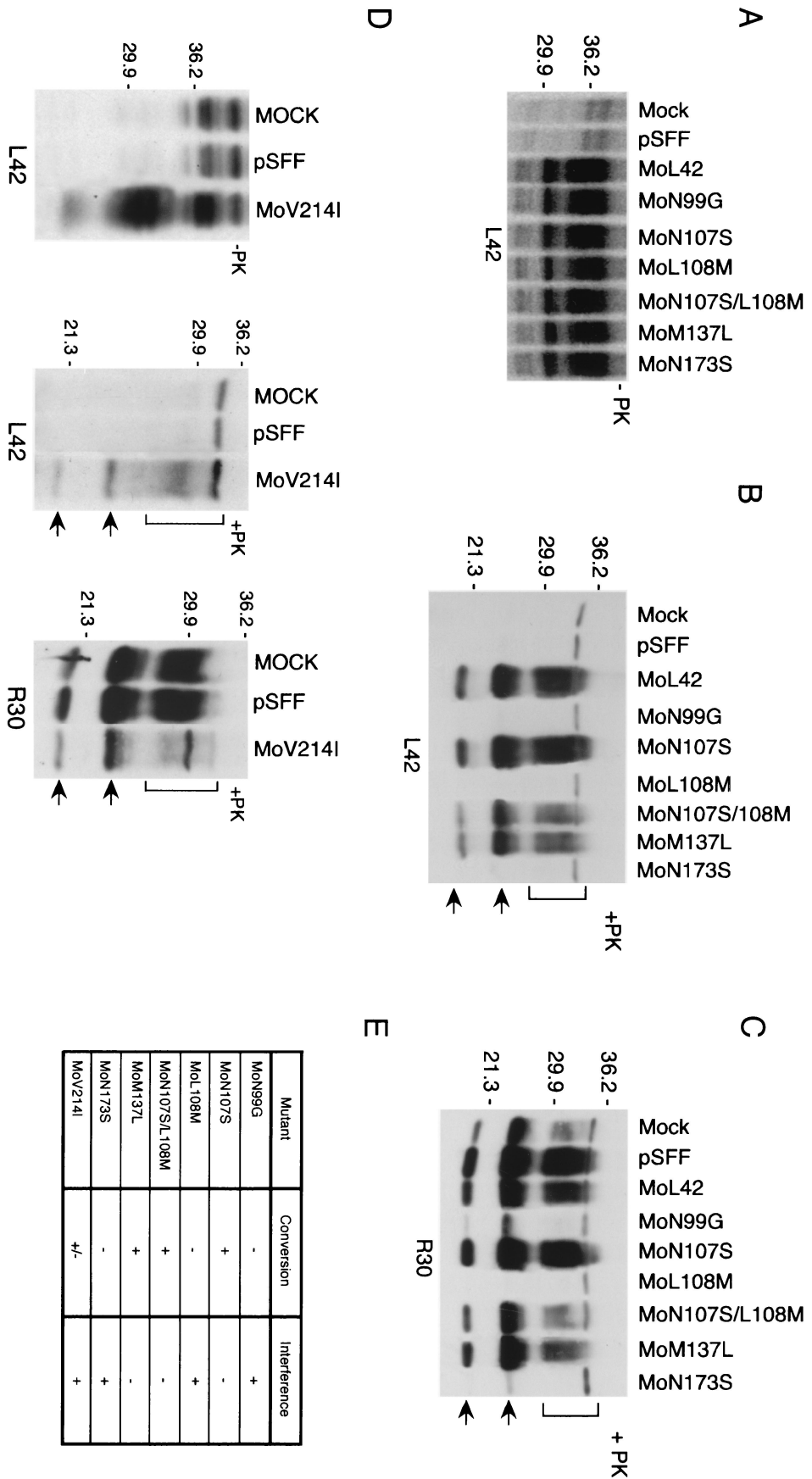


FIG. 4. Amino acid residue substitutions at codons 99, 108, 173, and 214 in MoL42 PrP inhibit its conversion into PrP-res. (A) Sc⁺-MNB cells expressing mutant MoL42 PrP were labeled with a [³⁵S]methionine-[³⁵S]cysteine mixture, and PrP molecules were immunoprecipitated from the cell lysates with the monoclonal antibody L42. The autoradiogram demonstrates the expression of each construct. (B) Detection of L42-positive PrP-res. Constructs MoN99G, MoL108M, and MoN173S were not converted to PrP-res. +PK, proteinase K treatment. (C) Analysis of total PrP-res by using the polyclonal antiserum R30. The expression of constructs MoN99G, MoL108M, and MoN173S drastically decreased total PrP-res levels. (D) MoV214I PrP-sen expression was analyzed by Western blotting (left panel). The expression of MoV214I PrP-sen led to the formation of small amounts of L42-positive PrP-res (middle panel) and strongly interfered with the formation of protease-resistant total PrP (right panel). For each construct, at least three independent experiments were performed. The arrows and brackets indicate unglycosylated and partially and fully glycosylated PrP-res molecules, respectively. Molecular size markers are indicated in kilodaltons. (E) Summary of the results in panels B, C, and D.

previous studies have demonstrated the importance of prion protein codon 214 (15) for PrP-res formation, we chose this position as a candidate residue within the C terminus that could potentially influence the conversion of PrP-sen to PrP-res. When MoV214I PrP was expressed in Sc⁺-MNB cells (Fig. 4D, left panel), only a small amount of this mutant was converted to PrP-res (Fig. 4D, middle panel), while the amount of total PrP-res decreased (Fig. 4D, right panel). Thus, at least one amino acid residue that decreased PrP-res formation was also present in the C-terminal region of rabbit PrP. In conclusion, amino acid residues in the N terminus, the central region, and the C terminus of rabbit PrP can all inhibit the formation of PrP-res in Sc⁺-MNB cells (Fig. 4E).

DISCUSSION

Previous studies have demonstrated that amino acid residues that can affect the interspecies induction of PrP-res are located in the central region (16, 25, 35) or C terminus (36) of the PrP molecule. Here we show that amino acid residues that interfered with the formation of PrP-res in scrapie-infected mouse neuroblastoma cells were present throughout the rabbit PrP-sen molecule. Thus, these results suggest that PrP amino acid differences in the N terminus, the C terminus, and the central part can all potentially influence the TSE species barrier.

We have shown that rabbit PrP-sen is not converted to PrP-res in tissue culture cells persistently infected with mouse-adapted scrapie. Since conversion of PrP-sen to PrP-res is believed to be the fundamental process underlying TSE agent pathogenesis, the resistance of rabbits to mouse TSE agent could be due to the inability of mouse PrP-res to convert rabbit PrP-sen to rabbit PrP-res. Recent studies suggest that the amino acid residues critical for species-specific PrP-res formation can differ, depending upon the species from which PrP-sen and PrP-res originate. For example, in the case of the species barrier between mice and hamsters, sequence homology at either amino acid residue 138 or 154 is important, depending upon whether or not PrP-res has been isolated from mice or hamsters, respectively (26). Thus, it is possible that within the rabbit PrP sequence, amino acid residues other than those identified here could influence the TSE species barriers that exist between rabbits and other mammals besides mice (1, 10). However, the fact that amino acid residues negatively affecting PrP-res formation in scrapie-infected mouse neuroblastoma cells are located throughout the rabbit PrP molecule suggests that the three-dimensional structure of rabbit PrP either cannot easily refold to PrP-res or is converted to PrP-res only at an extremely low efficiency by PrP-res molecules originating from different species. This may explain why rabbits are among the few mammalian species resistant to challenge with several different TSE agents.

Two rabbit-specific amino acid residues (99G and 108M) that inhibited the formation of PrP-res in scrapie infected mouse neuroblastoma cells reside within the N-terminal domain of the PrP-sen molecule. While this polypeptide segment appears to be relatively flexible and unstructured, it may be involved in intra- or intermolecular interactions with the protein core, the cell surface, or with a natural ligand (5). Amino acid residues 90 to 120 within this region have also been demonstrated to be crucial for both PrP-res formation (12, 18, 32) and intraspecies transmission of TSE agent (9, 39). During

PrP-res formation, the N-terminal domain appears to undergo major structural changes to a more structured conformation and is thus partially protected from proteolytic cleavage within the PrP-res aggregate (24, 37). Therefore, one explanation for the detrimental effect of residues 99G and 108M on PrP-res formation is that an N-terminal region containing these amino acid residues would be unable to undergo this conformational change.

An unexpected finding of this study was that within the N terminus, a rabbit-specific methionine at position 108 in MoL42 PrP prevented PrP-res formation, while MoL42 PrP molecules with rabbit-specific residues at positions 108 and 107 were readily converted to PrP-res. This demonstrates that the negative effect of one amino acid residue can be compensated for by an additional amino acid residue substitution. Again, these data suggest that it is the overall tertiary structure of PrP-sen rather than sequence homology that is the critical determinant in the induction of PrP-res formation. A compensatory effect could also explain why PrP molecules lacking amino acid residues 23 to 88 and 141 to 176 are conversion competent, although they lack regions shown to be important in PrP-res formation (38, 41).

We have also identified amino acid residues that inhibit the conversion of rabbit PrP-sen to its abnormal isoform within the central region and the C-terminal portion of the PrP molecule (residues 173S and 214I). Residue 173 is located in the turn leading into the second α -helix (Fig. 3B), an area that has been implicated in the species barrier between mink and ferrets (2). Amino acid mismatches in this region appear to also critically affect the intraspecies transmission of scrapie between different breeds of sheep or mice (22, 43, 44) and the formation of sheep and mouse PrP-res (6, 7, 30). Both amino acid residues 173 and 214 are part of a surface region of PrP formed by the loop between the second β -strand and the second α -helix and part of the C terminus (Fig. 3B) that could potentially function as an initial interaction site between PrP-sen and PrP-res (residues 164 to 173 and 205 to 222) (14). Substitutions at positions 173 (N→S) and 214 (V→I) are not expected to alter the global structure of this interaction site. However, they could possibly modify its specificity for both long-range electrostatic interactions and short-range hydrogen bonding with other proteins (5). Interestingly, amino acid residues within this surface region (residues 167, 171, 214, and 218) have also been proposed to be involved in the binding of an as-yet-undefined factor, protein X, hypothesized to be involved in the conversion process (15). The identification of the protein X binding site was based on tissue culture experiments demonstrating that the expression of mouse PrP mutated at these residues could interfere with PrP-res formation. However, as shown here and by others, amino acid residues other than the proposed protein X binding residues also interfere with PrP-res formation (12, 25, 27, 41). Additionally, cell-free conversion assays using purified PrP-res and PrP-sen have demonstrated that heterologous PrP-sen molecules bind to PrP-res in regions containing the putative protein X site, thus blocking PrP-res formation (14). Therefore, the effect of changes at residue 214 on PrP-res formation is most likely due to direct competition between different PrP-sen molecules for a common binding site on PrP-res.

ACKNOWLEDGMENTS

Financial support was obtained in part from the EU Commission. We thank Derek Dimcheff, Victoria Lawson, and Rick Race for critical reading of the manuscript and Anita Mora for assistance with the graphics.

REFERENCES

- Barlow, R. M., and J. C. Rennie. 1976. The fate of ME7 scrapie infection in rats, guinea-pigs, and rabbits. *Res. Vet. Sci.* **21**:110–111.
- Bartz, J. C., D. I. McKenzie, R. A. Bessen, R. F. Marsh, and J. M. Aiken. 1994. Transmissible mink encephalopathy species barrier effect between ferret and mink: PrP gene and protein analysis. *J. Gen. Virol.* **75**:2947–2953.
- Bendheim, P. E., A. Potempska, R. J. Kascsak, and D. C. Bolton. 1988. Purification and partial characterization of the normal cellular homologue of the scrapie agent protein. *J. Infect. Dis.* **158**:1198–1208.
- Bestwick, R. K., S. L. Kozak, and D. Kabat. 1988. Overcoming interference to retroviral superinfection results in amplified expression and transmission of cloned genes. *Proc. Natl. Acad. Sci. USA* **85**:5404–5408.
- Billeter, M., R. Riek, G. Wider, S. Hornemann, R. Glockshuber, and K. Wuthrich. 1997. Prion protein NMR structure and species barrier for prion diseases. *Proc. Natl. Acad. Sci. USA* **94**:7281–7285.
- Bossers, A., P. B. G. M. Belt, G. J. Raymond, B. Caughey, R. de Vries, and M. A. Smits. 1997. Scrapie susceptibility-linked polymorphisms modulate the in vitro conversion of sheep prion protein to protease-resistant forms. *Proc. Natl. Acad. Sci. USA* **94**:4931–4936.
- Bossers, A., R. de Vries, and M. A. Smits. 2000. Susceptibility of sheep for scrapie as assessed by in vitro conversion of nine naturally occurring variants of PrP. *J. Virol.* **74**:1407–1414.
- Caughey, B. W., A. Dong, K. S. Bhat, D. Ernst, S. F. Hayes, and W. S. Caughey. 1991. Secondary structure analysis of the scrapie-associated protein PrP 27–30 in water by infrared spectroscopy. *Biochemistry* **30**:7672–7680.
- Fischer, M., T. Rulicke, A. Raebler, A. Sailer, M. Moser, B. Oesch, S. Brandner, A. Aguzzi, and C. Weissmann. 1996. Prion protein (PrP) with aminoproximal deletions restoring susceptibility of PrP knockout mice to scrapie. *EMBO J.* **15**:1255–1264.
- Gibbs, C. J., Jr., and D. C. Gajdusek. 1973. Experimental subacute spongiform virus encephalopathies in primates and other laboratory animals. *Science* **182**:67–68.
- Harmeyer, S., E. Pfaff, and M. H. Groschup. 1998. Synthetic peptide vaccines yield monoclonal antibodies to cellular and pathological prion proteins of ruminants. *J. Gen. Virol.* **79**:937–945.
- Hölscher, C., H. Delius, and A. Bürkle. 1998. Overexpression of nonconvertible PrP^C Δ114–121 in scrapie-infected mouse neuroblastoma cells leads to *trans*-dominant inhibition of wild-type PrP^{Sc} accumulation. *J. Virol.* **72**:1153–1159.
- Hope, J., L. J. Morton, C. F. Farquhar, G. Multhaup, K. Beyreuther, and R. H. Kimberlin. 1986. The major polypeptide of scrapie-associated fibrils (SAF) has the same size, charge distribution and N-terminal protein sequence as predicted for the normal brain protein (PrP). *EMBO J.* **5**:2591–2597.
- Horiuchi, M., and B. Caughey. 1999. Specific binding of normal prion protein to the scrapie form via a localized domain initiates its conversion to the protease-resistant state. *EMBO J.* **18**:3193–3203.
- Kaneko, K., L. Zulianello, M. Scott, C. M. Cooper, A. C. Wallace, T. L. James, F. E. Cohen, and S. B. Prusiner. 1997. Evidence for protein X binding to a discontinuous epitope on the cellular prion protein during scrapie prion propagation. *Proc. Natl. Acad. Sci. USA* **94**:10069–10074.
- Kocisko, D. A., S. A. Priola, G. J. Raymond, B. Chesebro, P. T. Lansbury, Jr., and B. Caughey. 1995. Species specificity in the cell-free conversion of prion protein to protease-resistant forms: a model for the scrapie species barrier. *Proc. Natl. Acad. Sci. USA* **92**:3923–3927.
- Koradi, R., M. Billeter, and K. Wuthrich. 1996. MOLMOL: a program for display and analysis of macromolecular structures. *J. Mol. Graph.* **14**:51–55.
- Lawson, V. A., S. A. Priola, K. Wehrly, and B. Chesebro. 2001. N-terminal truncation of prion protein affects both formation and conformation of abnormal protease-resistant prion protein generated in vitro. *J. Biol. Chem.* **276**:35265–35271.
- Loftus, B., and M. Rogers. 1997. Characterization of a prion protein (PrP) gene from rabbit, a species with apparent resistance to infection by prions. *Gene* **184**:215–219.
- Mann, R., R. C. Mulligan, and D. Baltimore. 1983. Construction of a retrovirus packaging mutant and its use to produce helper-free defective retrovirus. *Cell* **33**:153–159.
- Miller, A. D., and C. Buttimore. 1986. Redesign of retrovirus packaging cell lines to avoid recombination leading to helper virus production. *Mol. Cell. Biol.* **6**:2895–2902.
- Moore, R. C., J. Hope, P. A. McBride, I. McConnell, J. Selfridge, D. W. Melton, and J. C. Manson. 1998. Mice with gene targeted prion protein alterations show that Prnp, Sinc and Prni are congruent. *Nat. Genet.* **18**:118–125.
- Pan, K. M., M. Baldwin, J. Nguyen, M. Gasset, A. Serban, D. Groth, I. Mehlhorn, Z. Huang, R. J. Fleterick, F. E. Cohen, and S. B. Prusiner. 1993. Conversion of alpha-helices into beta-sheets features in the formation of the scrapie prion proteins. *Proc. Natl. Acad. Sci. USA* **90**:10962–10966.
- Peretz, D., R. A. Williamson, Y. Matsunaga, H. Serban, C. Pinilla, R. B. Bastidas, R. Rozenshteyn, T. L. James, R. A. Houghton, F. E. Cohen, S. B. Prusiner, and D. R. Burton. 1997. A conformational transition at the N terminus of the prion protein features in formation of the scrapie isoform. *J. Mol. Biol.* **273**:614–622.
- Priola, S. A., B. Caughey, R. E. Race, and B. Chesebro. 1994. Heterologous PrP molecules interfere with accumulation of protease-resistant PrP in scrapie-infected murine neuroblastoma cells. *J. Virol.* **68**:4873–4878.
- Priola, S. A., J. Chabry, and K. Chan. 2001. Efficient conversion of normal prion protein (PrP) by abnormal hamster PrP is determined by homology at amino acid residue 155. *J. Virol.* **75**:4673–4680.
- Priola, S. A., and B. Chesebro. 1995. A single hamster PrP amino acid blocks conversion to protease-resistant PrP in scrapie-infected mouse neuroblastoma cells. *J. Virol.* **69**:7754–7758.
- Race, R., A. Jenny, and D. Sutton. 1998. Scrapie infectivity and proteinase K-resistant prion protein in sheep placenta, brain, spleen, and lymph node: implications for transmission and antemortem diagnosis. *J. Infect. Dis.* **178**:949–953.
- Race, R. E., L. H. Fadness, and B. Chesebro. 1987. Characterization of scrapie infection in mouse neuroblastoma cells. *J. Gen. Virol.* **68**:1391–1399.
- Raymond, G. J., J. Hope, D. A. Kocisko, S. A. Priola, L. D. Raymond, A. Bossers, J. Ironside, R. G. Will, S. G. Chen, R. B. Petersen, P. Gambetti, R. Rubenstein, M. A. Smits, P. T. Lansbury, Jr., and B. Caughey. 1997. Molecular assessment of the potential transmissibilities of BSE and scrapie to humans. *Nature* **388**:285–288.
- Riek, R., S. Hornemann, G. Wider, M. Billeter, R. Glockshuber, and K. Wuthrich. 1996. NMR structure of the mouse prion protein domain PrP(121–321). *Nature* **382**:180–182.
- Rogers, M., F. Yehiely, M. Scott, and S. B. Prusiner. 1993. Conversion of truncated and elongated prion proteins into the scrapie isoform in cultured cells. *Proc. Natl. Acad. Sci. USA* **90**:3182–3186.
- Safar, J., P. P. Roller, D. C. Gajdusek, and C. J. Gibbs, Jr. 1993. Thermal stability and conformational transitions of scrapie amyloid (prion) protein correlate with infectivity. *Protein Sci.* **2**:2206–2216.
- Scott, M., D. Foster, C. Mirenda, D. Serban, F. Coufal, M. Walchli, M. Torchia, D. Groth, G. Carlson, S. J. DeArmond, and S. B. Prusiner. 1989. Transgenic mice expressing hamster prion protein produce species-specific scrapie infectivity and amyloid plaques. *Cell* **59**:847–857.
- Scott, M., D. Groth, M. Torchia, S. L. Yang, S. J. DeArmond, and S. B. Prusiner. 1993. Propagation of prions with artificial properties in transgenic mice expressing chimeric PrP genes. *Cell* **73**:979–988.
- Scott, M. R., J. Safar, G. Telling, O. Nguyen, D. Groth, M. Torchia, R. Koehler, P. Tremblay, D. Walther, F. E. Cohen, S. J. DeArmond, and S. B. Prusiner. 1997. Identification of a prion protein epitope modulating transmission of bovine spongiform encephalopathy prions to transgenic mice. *Proc. Natl. Acad. Sci. USA* **94**:14279–14284.
- Stahl, N., M. A. Baldwin, D. B. Teplow, L. Hood, B. W. Gibson, A. L. Burlingame, and S. B. Prusiner. 1993. Structural studies of the scrapie prion protein using mass spectrometry and amino acid sequencing. *Biochemistry* **32**:1991–2002.
- Supattapone, S., P. Bosque, T. Muramoto, H. Wille, C. Aagaard, D. Peretz, H. O. Nguyen, C. Heinrich, M. Torchia, J. Safar, F. E. Cohen, S. J. DeArmond, S. B. Prusiner, and M. Scott. 1999. Prion protein of 106 residues creates an artificial transmission barrier for prion replication in transgenic mice. *Cell* **96**:869–878.
- Supattapone, S., T. Muramoto, G. Legname, I. Mehlhorn, F. E. Cohen, S. J. DeArmond, S. B. Prusiner, and M. R. Scott. 2001. Identification of two prion protein regions that modify scrapie incubation time. *J. Virol.* **75**:1408–1413.
- Vorberg, I., A. Buschmann, S. Harmeyer, A. Saalmuller, E. Pfaff, and M. H. Groschup. 1999. A novel epitope for the specific detection of exogenous prion proteins in transgenic mice and transfected murine cell lines. *Virology* **255**:26–31.
- Vorberg, I., K. Chan, and S. A. Priola. 2001. Deletion of β-strand and α-helix secondary structure in normal prion protein inhibits formation of its protease-resistant isoform. *J. Virol.* **75**:10024–10032.
- Vorberg, I., E. Pfaff, and M. H. Groschup. 2000. The use of monoclonal antibody epitopes for tagging PrP in conversion experiments. *Arch. Virol. Suppl.* **16**:285–290.
- Westaway, D., P. A. Goodman, C. A. Mirenda, M. P. McKinley, G. A. Carlson, and S. B. Prusiner. 1987. Distinct prion proteins in short and long scrapie incubation period mice. *Cell* **51**:651–662.
- Westaway, D., V. Zuliani, C. M. Cooper, M. Da Costa, S. Neuman, A. L. Jenny, L. Detwiler, and S. B. Prusiner. 1994. Homozygosity for prion protein alleles encoding glutamine-171 renders sheep susceptible to natural scrapie. *Genes Dev.* **8**:959–969.