

# Hemizyosity at the *NCF1* Gene in Patients with Williams-Beuren Syndrome Decreases Their Risk of Hypertension

Miguel Del Campo,<sup>1,\*</sup> Anna Antonell,<sup>1,\*</sup> Luis F. Magano,<sup>1</sup> Francisco J. Muñoz,<sup>2</sup> Raquel Flores,<sup>1</sup> Mònica Bayés,<sup>1</sup> and Luis A. Pérez Jurado<sup>1</sup>

Unitats de <sup>1</sup>Genètica and <sup>2</sup>Senyalització Cel·lular, Departament de Ciències Experimentals i de la Salut, Universitat Pompeu Fabra, Barcelona

Williams-Beuren syndrome (WBS), caused by a heterozygous deletion at 7q11.23, represents a model for studying hypertension, the leading risk factor for mortality worldwide, in a genetically determined disorder. Haploinsufficiency at the elastin gene is known to lead to the vascular stenoses in WBS and is also thought to predispose to hypertension, present in ~50% of patients. Detailed clinical and molecular characterization of 96 patients with WBS was performed to explore clinical-molecular correlations. Deletion breakpoints were precisely defined and were found to result in variability at two genes, *NCF1* and *GTF2IRD2*. Hypertension was significantly less prevalent in patients with WBS who had the deletion that included *NCF1* ( $P = .02$ ), a gene coding for the p47<sup>phox</sup> subunit of the NADPH oxidase. Decreased p47<sup>phox</sup> protein levels, decreased superoxide anion production, and lower protein nitrotyrosination were all observed in cell lines from patients hemizygous at *NCF1*. Our results indicate that the loss of a functional copy of *NCF1* protects a proportion of patients with WBS against hypertension, likely through a lifelong reduced angiotensin II-mediated oxidative stress. Therefore, antioxidant therapy that reduces NADPH oxidase activity might have a potential benefit in identifiable patients with WBS in whom serious complications related to hypertension have been reported, as well as in forms of essential hypertension mediated by a similar pathogenic mechanism.

Williams-Beuren syndrome (WBS [MIM 194050]) is a neurodevelopmental disorder with multisystemic manifestations and a prevalence in newborns that ranges between 1/7,500 and 1/20,000 (Greenberg 1990; Stromme et al. 2002). The WBS phenotype includes distinctive facial features; vascular stenoses, most notably supraaortic stenosis (SVAS); global cognitive deficit, with an asymmetric neurobehavioral profile; and transient hypercalcemia of infancy. WBS is caused by a segmental aneuploidy of 1.55–1.83 Mb at chromosomal band 7q11.23, which includes *ELN* (coding for elastin [MIM 130160]) and 25–27 additional genes (Francke 1999; Peoples et al. 2000; Pérez Jurado 2003). The WBS deletion is mediated by nonallelic homologous recombination (NAHR) between regional segmental duplications or low-copy repeats (LCRs) that flank the region. Each of the LCR blocks that mediate most deletions, called “blocks B,” contain three transcription units, which are either functional genes or pseudogenes, depending on their location (Valero et al. 2000). *GTF2I* (general transcription factor II-I [MIM 601679]) and *NCF1* (neutrophilic cytosolic factor 1 [MIM 608512]) have been shown to be functional only from a single locus located in the medial block B (Bm) (Gorlach et al. 1997; Pérez Jurado et al. 1998), whereas the other two copies located in the centromeric (Bc) and telomeric (Bt) blocks are pseudo-

genes with truncating mutations. The third transcription unit, *GTF2IRD2* (alpha [MIM 608899] and beta [MIM 608900]), which codes for a protein of unknown function but related to GTF2I, appears to be functional in two of the three copies: those located in Bm and Bt (Tipney et al. 2004; Antonell et al. 2005). Despite the fact that the great majority of patients have deletions very similar in size, the WBS phenotype is highly variable, and the molecular bases of this variability are still unknown. Hemizyosity at *ELN* is known to be the cause of the vascular stenoses that lead to clinically recognized cardiovascular involvement in as many as 75% of patients and is also thought to predispose to hypertension. Additional candidates for involvement in several aspects of the WBS phenotype have been proposed on the basis of clinical-molecular correlations in patients with partial phenotypes and smaller deletions (Hirota et al. 2003; Morris et al. 2003; Pérez Jurado 2003; Tassabehji 2003; Howald et al. 2005; Tassabehji et al. 2005). However, definitive pathogenetic implication of the genes in the deletion or flanking regions, other than *ELN*, is still uncertain.

Hypertension is the leading risk factor for mortality worldwide, affecting 26% of the adult population overall, and these numbers are predicted to increase by ~60% in the next 20 years (Kearney et al. 2005). Understanding

Received October 6, 2005; accepted for publication January 6, 2006; electronically published January 31, 2006.

Address for correspondence and reprints: Dr. Luis A Pérez Jurado, Unitat de Genètica, Departament de Ciències Experimentals i de la Salut, Universitat Pompeu Fabra, Dr. Aiguader 80, 08003 Barcelona, Spain. E-mail: luis.perez@upf.edu

\* These two authors contributed equally to this work.

*Am. J. Hum. Genet.* 2006;78:533–542. © 2006 by The American Society of Human Genetics. All rights reserved. 0002-9297/2006/7804-0002\$15.00

the pathogenic mechanisms involved in this condition is one of the highest priorities for public health, to better diagnose, treat, and prevent the disorder. There are multiple genetic and environmental factors contributing to human hypertension, and a role for oxidative stress seems to be somehow present in most forms (Touyz 2005). WBS represents a model for studying the pathogenic mechanism of hypertension in a genetically determined disorder. Interestingly, the hypertension found in ~50% of young adults with WBS is not often associated with visible vascular stenoses of their descending aortas or renal arteries on abdominal Doppler ultrasound, a fact that speaks against vascular narrowing alone as the determinant factor for hypertension (Cherniske et al. 2004). Thus, high blood pressure in WBS appears to fall in the category of essential hypertension with no well-defined structural cause, since anatomic renovascular hypertension is a very infrequent finding.

We have characterized the clinical features of 96 patients with WBS and have performed fine mapping of the deletions, to investigate whether variation in the breakpoint may affect different genes implicated in this variable phenotype. We have determined that the occurrence of hypertension in WBS is not correlated at all with the severity of the cardiovascular lesions. Instead, hypertension occurs with significantly lower frequency in patients whose deletion includes a functional copy of the gene *NCF1*, which encodes the p47<sup>phox</sup> subunit of the NADPH oxidase (NOX) complex. Therefore, for patients with WBS, hemizygoty for *NCF1* is a protective factor against hypertension. This finding implicates oxidative stress directly in the pathogenesis of hypertension in WBS and suggests that there is a potential role for antioxidant pharmacological intervention to prevent its development in WBS, as well as other forms of hypertension mediated by a similar mechanism.

## Material and Methods

### Subjects

Major clinical characteristics were analyzed in 96 patients with the phenotype of sporadic WBS and a confirmed deletion at 7q11.23 who were referred from multiple clinical centers in Spain. Patients' anthropometrical measurements were compared with normal and WBS standards (Hall et al. 1989; Partsch et al. 1999). All patients were evaluated using a similar protocol for data collection and physical exam. Blood pressure was taken during morning hours, to avoid any factor that could increase anxiety, and on at least two separate occasions. For this study, hypertension was defined as blood pressure measurements >90th percentile for age and sex (Horan 1987).

### Molecular Characterization of the Deletions

PCR analyses of single- and multiple-copy microsatellites were performed, to define the size and parental origin of the dele-

tion; genotyping of paralogous sequence variants, also called "site-specific nucleotides" (SSNs), was done thereafter to map the exact breakpoints of the deletion within block B. PCR conditions and oligonucleotides used for the analyses were as described in detail elsewhere (Bayés et al. 2003).

Significance of clinical-molecular correlations was analyzed using the statistical package SPSS 11.5. Specifically, the  $\chi^2$  test, the Fisher's exact test, the Student's *t* test, and logistic regression were used for the analyses, according to the characteristics of each variable. Significance level was established as  $P < .05$ .

### Determination of *NCF1* Copy Number

The *NCF1* gene can be distinguished from its pseudogenes by the presence of a 2-bp (GT) deletion at the beginning of exon 2 in the pseudogene copies. PCR reactions were performed with 50 ng of genomic DNA, PCR buffer, 1.5 mM MgCl<sub>2</sub>, 1.25 mM of each dNTP, 5 pmol of each primer (one labeled with HEX fluorochrome), and 0.25 units of *Taq* polymerase (Ecogen) on a GeneAmp System 9700 thermocycler (Applied Biosystems) with the following parameters: a denaturing step (5 min at 94°C), 27 denaturing-annealing-extension cycles (at 94°C, 55°C, and 72°C, for 40 s each), and a final extension (7 min at 72°C). Genotyping was performed on an ABI 3100 sequencer, and results were analyzed using the Genescan 3.1 software (Applied Biosystems). Pseudogene/gene ratio quantification was performed by comparing the height of the peaks corresponding to each variant.

### Population Study of Essential Hypertension

A population sample composed of individuals randomly selected from cross-sectional studies in the Spanish province of Girona, to establish the prevalence of cardiovascular factors in the region (Masia et al. 1998), was also studied for the *NCF1* gene:pseudogene variant. Only strictly normotensive adult subjects (diastolic blood pressure <80 mmHg and systolic blood pressure <135 mmHg;  $n = 68$ ) and definitely hypertensive subjects (diastolic blood pressure >90 mmHg and systolic blood pressure >150 mmHg;  $n = 68$ ) were considered.

### Cell Lines

Epstein-Barr-transformed lymphoblastoid cell lines from individuals with different *NCF1* gene-copy number were grown in RPMI 1640 medium plus 10% fetal calf serum and antibiotics (100 units/ml penicillin and 100  $\mu$ g/ml streptomycin). Culture conditions were 37°C and 5% CO<sub>2</sub>. Cells were used for the experiments while growing in exponential phase. Cell viability was measured by using the trypan-blue exclusion test, showing a viability of 98%.

### Measurement of NOX Activity

Superoxide anion produced during the respiratory burst by the NOX activation was evaluated using the reduction of nitroblue tetrazolium (NBT) assay (SIGMA), which was performed as follows. Aliquots of 250  $\mu$ l of lymphoblastoid cells ( $10 \times 10^6$ /ml) were mixed with 250  $\mu$ l of NBT (1 mg/ml) in Hank's balanced salt solution (HBSS) (Invitrogen-GIBCO). A dose-response curve, with phorbol myristate acetate (PMA) to stimulate NOX, determined that 1  $\mu$ M PMA was suitable to induce

**Table 1****Clinical Features of 96 Patients with WBS**

Clinical Feature	No. with Feature/ No. Assessed	Percentage
Sex:		
Male	51/96	53
Female	45/96	47
Gestational age >41 wks	28/88	32
Birth weight <10th percentile	48/92	52
Height <3rd percentile	51/83	61
Head circumference <10th percentile	27/66	41
WBS facies	96/96	100
WBS personality	96/96	100
Hyperacusis	73/76	96
Cardiovascular lesion	63/96	66
SVAS	42/96	44
PPS	30/96	32
Hypertension:	26/57	46
Systolic	25/57	44
Diastolic	15/57	26
Hypercalcemia	10/63	16
Gastrointestinal symptoms	78/88	89
Urinary tract anomalies	13/60	22
Psychiatric problems	22/60	37
Muscle/skeletal problems	37/63	59

a positive response. Unstimulated cells were treated with HBSS. After 60 min of incubation at 37°C, the reaction was stopped with 0.5 M HCl, and cells were centrifuged. Supernatants were discarded, and the reduced NBT was extracted with dioxan. Supernatant absorbance at 525 nm was determined in an Ultrospec 2100-pro spectrophotometer (Amersham Biosciences). Experiments were performed in duplicate. Data are expressed as percentages, with the assumption that unstimulated cells have 100% NOX activity. Data were evaluated statistically by use of the Student's *t* test, with a significance level of  $P < .05$ .

#### Western-Blot Analysis

Cells were lysed and protein concentration was determined (Bio-Rad). Forty  $\mu$ g of proteins per sample was run in 10% SDS-PAGE gel for 2 h at 150 V and was transferred onto a nitrocellulose membrane. Membranes were incubated with a 1:500 mouse antibody (Ab) anti-p47<sup>phox</sup> (BD Biosciences) and then with 1:2,000 anti-mouse horseradish peroxidase-linked Ab (Amersham Biosciences). Loading reference was performed by use of a 1:5,000 mouse anti- $\alpha$ -tubulin Ab (SIGMA). Proteins were detected by an enhanced chemiluminescence kit (Pierce). Bands were quantified with the Scion Image program (Scion Corporation). The ratio between p47<sup>phox</sup> and  $\alpha$ -tubulin was calculated to normalize to the amount of protein loaded per lane.

#### Immunocytochemistry for p47<sup>phox</sup> and Detection of Nitrotyrosination

Approximately  $7.5 \times 10^4$  lymphoblastoid cells were attached on 1% poly-L-lysine-coated coverslips by cytospinning. Cells were fixed and incubated for 2 h at room temperature with 1:300 mouse anti-p47<sup>phox</sup> monoclonal Ab (BD Biosciences) or 1:400 anti-nitrotyrosine polyclonal Ab (Molecular Probes),

followed by incubation with 1:500 Alexa fluor 488 goat anti-mouse or anti-rabbit Ab (Molecular Probes) for 1 h at room temperature. Digital images were taken with a Leica TCS SP confocal microscope and were analyzed with Leica confocal software.

## Results

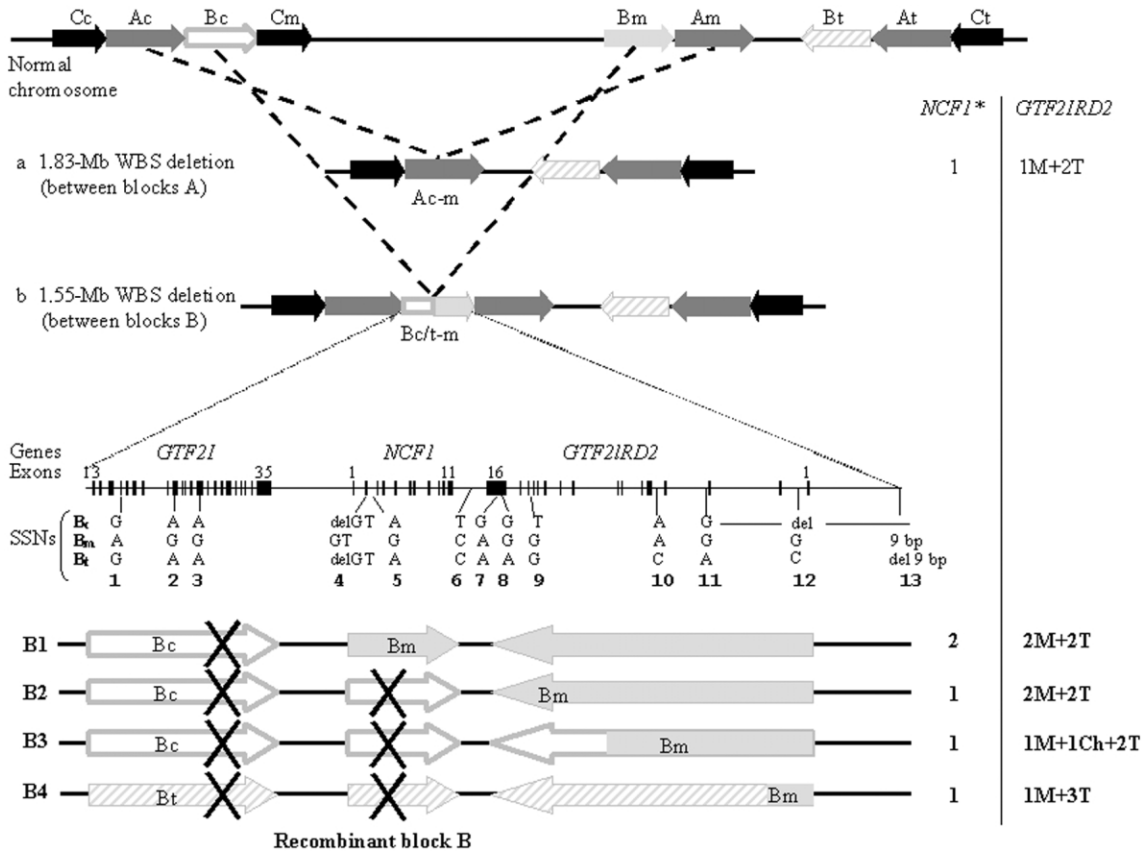
### Clinical and Molecular Characterization

The clinical features of 96 Spanish patients with classic WBS, with a mean age of 8.8 years (range 0–28 years), are shown in table 1. Molecular studies identified a total of 88 patients with a 1.55-Mb deletion, mediated by NAHR between blocks B (fig. 1B), whereas 8 subjects had a larger (1.83-Mb) deletion, mediated by NAHR between blocks A (fig. 1A). Of the deletions, 53% occurred in the maternal chromosome, and 47% in the paternal one. Data at SSNs 8, 10, and 11 permitted inference that the transmitting progenitor was a carrier of an inverted chromosome in 25% of cases, as reported elsewhere (Bayés et al. 2003). The analysis of additional SSNs allowed us to precisely define the breakpoints between two SSNs in the recombinant chromosome of each patient and thus to identify the number of potentially functional copies of *NCF1* and *GTF2IRD2* (fig. 1 and table 2).

At *NCF1*, we and others have reported a polymorphism, likely generated by gene conversion between the gene and pseudogenes, that results in the presence of either three (~15%) or four (~1%) gene-type copies in the normal population (Heyworth et al. 2002; Bayés et al. 2003). Dependent on the site of the deletion and the presence or absence of this polymorphism, patients with

**Table 2****Molecular Variants in 96 Patients with WBS**

Molecular Variant	No. (%) of Subjects
Parental origin of the deletion:	
Maternal	48 (50)
Paternal	43 (45)
Unknown	5 (5)
Inversion-mediated deletion:	
Yes	24 (25)
No	72 (75)
Deletion size:	
1.55 Mb (blocks B)	88 (92)
1.83 Mb (blocks A)	8 (8)
“Functional” copies of <i>NCF1</i> :	
1	42 (44)
2	41 (43)
3	12 (12)
4	1 (1)
“Functional” copies of <i>GTF2IRD2</i> :	
1M+3T	24 (25)
2M+2T	53 (55)
1M+1Ch+2T	11 (12)
1M+2T	8 (8)



**Figure 1** Schematic representation of the common deletions associated with WBS and the characterization of deletion breakpoints. *Top*, Scheme of the 7q11.23 genomic region, with the large blocks of segmental duplications represented by black (*block C*), dark gray (*block A*), and light gray (*block B*) arrows indicating their relative orientation. The three blocks B are differentiated by unblackened (*Bc*), blackened (*Bm*), and diagonally striped (*Bt*) light gray arrows. The two major types of deletion that cause WBS occur through NAHR mediated by blocks of segmental duplications that are located in tandem, either blocks *Ac* and *Am* (*a*) or blocks *Bc/t* and *Bm* (*b*). *Bottom*, Genomic structure and resulting recombinant block B in patients with the 1.55-Mb deletion. The schematic representation of the entire block with its gene content (numbered exons of *GTF2I*, *NCF1*, and *GTF2IRD2*) is shown. The location of the multiple SSNs analyzed in this study (with the nucleotide corresponding to each of the locations *Bc*, *Bm*, and *Bt*) is drawn below (numbered as in the work of Bayés et al. [2003]). The resulting chromosomes, depending on deletion breakpoints, are shown with arrows corresponding to functional genes or pseudogenes (marked with an X) indicating their transcriptional direction. *B1*, Deletion proximal to the *NCF1* gene that does not affect the functional copies of *GTF2IRD2*. *B2*, Deletion causing the loss of *NCF1* but not *GTF2IRD2*. *B3*, Loss of *NCF1* and breakpoint within *GTF2IRD2* creating a medial-centromeric chimeric copy of the gene. *B4*, Inversion-mediated deletion in which the recombinant chromosome loses *NCF1* and a medial copy of *GTF2IRD2* but gains a telomeric copy of *GTF2IRD2*. The numbers of functional copies of *NCF1* and *GTF2IRD2* corresponding to each rearrangement are displayed at the right of the figure. The asterisk (\*) indicates that the possibility of additional *NCF1* copies due to polymorphism is not shown in the figure.

WBS display one, two, three, or four *NCF1* gene-type copies (table 2). Representative results of *NCF1* genotypes in patients with WBS and control individuals are shown in figure 2.

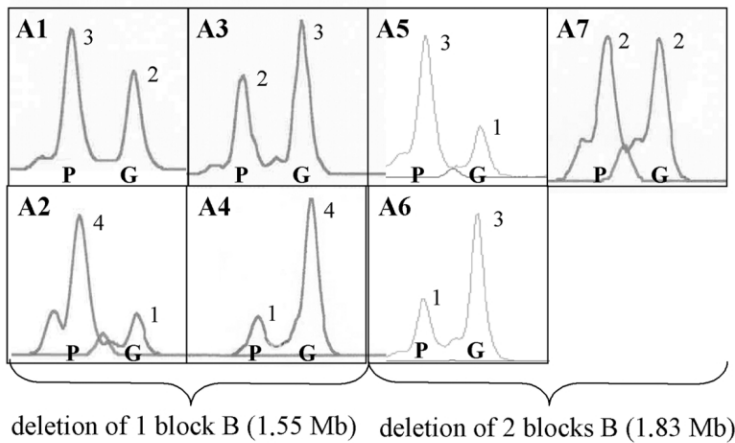
At *GTF2IRD2*, several relevant molecular variants could also be defined, as shown in figure 1. Their frequencies are shown in table 2.

#### Clinical-Molecular Correlations

Since these 96 patients have a confirmed deletion of the WBS region in band 7q11.23, the frequency of each of the major clinical features listed in table 1 can be used

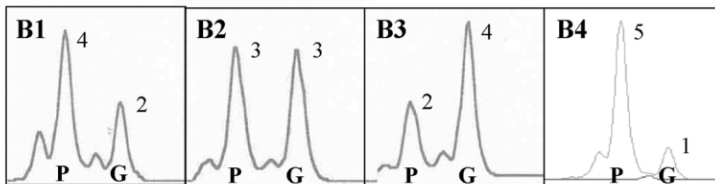
to define the WBS characteristic phenotype and to understand its variability. Some features were age dependent, such as most skeletal problems (spine curves), which are present in over half (59%) of patients and appear after the 1st decade of life ( $P = .01$ ;  $\chi^2$  test). Although global cardiovascular involvement was not age dependent, peripheral pulmonic stenosis (PPS) was significantly more frequent in younger patients, who received diagnoses during the 1st decade of life ( $P = .009$ ;  $\chi^2$  test). Only cardiac involvement was sex dependent; it was clearly more frequent in males ( $P = .02$ ; Fisher's exact test). Except for the fact that microcephaly was more frequent in patients

## A Patients with WBS



Genotype (P/G)	P/G peak ratios	
	Mean	Range
5/1	4.66	4.53-4.79
4/2	1.93	1.77-2.07
3/3 or 2/2	0.98	0.92-1.05
2/4	0.51	0.47-0.56
3/2	1.41	1.33-1.5
4/1	3.61	3.04-3.90
2/3	0.65	0.61-0.75
1/4	0.25	0.25-0.25
3/1	2.79	2.71-2.92
1/3	0.35	0.32-0.38

## B Controls



**Figure 2** Representative genotypes at exon 2 of *NCF1* of individuals with different pseudogene/gene copy ratios. Each square includes a genotype with two peaks corresponding to the PCR amplicons of the *NCF1* pseudogene (P) and gene (G) copies from several individuals with WBS with 1.55-Mb (A1–A4) or 1.83-Mb (A5–A7) deletions as well as several controls (B1–B3 and B4, a carrier of autosomal recessive chronic granulomatous disease). The predicted number of *NCF1* pseudogene and gene copies is shown above each peak. The table at the right displays the actual P/G peak ratio values (mean and range) obtained for each predicted genotype.

with maternal deletions ( $P = .01$ ; Fisher's exact test), no association with parental origin of the deletions was found with other features. However, there was a non-significant trend for paternal chromosome deletions to be more frequent in males and for maternal chromosome deletions to be more frequent in females ( $P = .09$ ; Fisher's exact test).

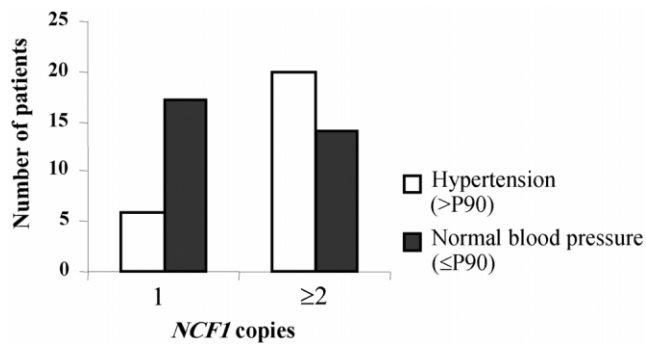
No significant associations were found among the different clinical variables. Specifically, no significant associations were found between any subtype or degree of severity of cardiovascular involvement and the presence of hypertension, neither for systolic nor for diastolic hypertension. Patient ages (mean  $\pm$  SD,  $9.7 \pm 6.4$  years with hypertension vs.  $10.8 \pm 7.2$  years without hypertension), body weights for age, and reported diet and physical activities were not significantly different between the groups with and without hypertension. None of the patients with WBS were smokers. Only nine patients were receiving treatment for established high blood pressure at the time of the evaluation.

With respect to the different molecular variants, hypertension was found with significantly different prevalence, depending on the number of copies of the func-

tional *NCF1* gene. Hypertension was much less frequent in patients with a single functional copy of *NCF1* than in the rest of the cohort with two or more copies ( $P = .02$ ; Fisher's exact test) (fig. 3). The presence of a third or fourth *NCF1* copy due to polymorphism was not significantly associated with an increase in the prevalence of hypertension, when compared with the most frequent two-copy variant ( $P = .29$ ; Fisher's exact test). The presence of more than one copy of *NCF1* appears to be associated with an increased risk for hypertension, with a raw odds ratio of 4.04 (95% CI 1.28–12.84).

Among the four variants of *GTF2IRD2* (table 2), the variant 2M+2T, which is associated with no deletion of *NCF1*, is thus significantly associated with a higher risk of hypertension ( $P = .01$ ; Fisher's exact test). Multiple linear regression analysis to study the impact on hypertension of several variables (sex, age [in decades], parental origin of the deletion, cardiovascular involvement, and *NCF1* copy number) showed a significant adjusted odds ratio for only *NCF1* copy number (odds ratio of 3.62; 95% CI 1.13–11.6).

No other significant associations were found among the remaining clinical and molecular variables.



**Figure 3** Significant association between hypertension (>P90 = blood pressure >90th percentile) and *NCF1* copy number. The histogram clearly shows that patients with a single copy of *NCF1* are over-represented in the group with normal blood pressure ( $\leq P90$  = blood pressure  $\leq 90$ th percentile), whereas patients with two or three *NCF1* copies cluster in the hypertension group ( $P = .02$ ; Fisher's exact test).

#### Association Studies of Essential Hypertension with the *NCF1* Copy-Number Polymorphism

To define whether the *NCF1* gene copy-number variant may have a role in essential hypertension, we genotyped 68 adult patients with essential hypertension and 68 age- and sex-matched normotensive controls. The genotype frequencies were not significantly different between both groups. In the group with essential hypertension, 56 (82.35%) had two *NCF1* copies, 11 (16.17%) had three copies, and 1 (1.47%) had four copies, whereas, among the normotensive control individuals ( $n = 68$ ), 57 (83.82%) showed two copies, 10 (14.7%) showed three copies, and 1 (1.47%) had four copies ( $P = .53$ ;  $\chi^2$  test).

#### Functional and Expression Studies of Patients with WBS and Control Individuals with One, Two, or Three *NCF1* Gene-Type Copies

Immunodetection of p47<sup>phox</sup> in lymphoblastoid cell lines showed a significantly reduced expression of the protein in cell lines with only one *NCF1* gene-type copy, compared with those with two or three copies (fig. 4A). This finding was confirmed by western-blot analysis, which showed significantly lower levels of p47<sup>phox</sup> protein ( $P = .04$ ; Student's *t* test) in cells from patients hemizygous for the *NCF1* gene (mean result  $\pm$  SE  $40.28 \pm 15.3$  arbitrary units [Scion Image software]) than in cells with two gene-type copies ( $64.5 \pm 4.9$ ). There was also a significant increase of protein expression in cell lines with three copies ( $87.1 \pm 8.9$ ) ( $P = .02$ ; Student's *t* test) (fig. 4B).

We also tested NBT reduction in cell lines from patients with WBS who were hemizygous at *NCF1* and in control cell lines with two and three *NCF1* gene-type copies. We observed a significant decrease in NBT reduc-

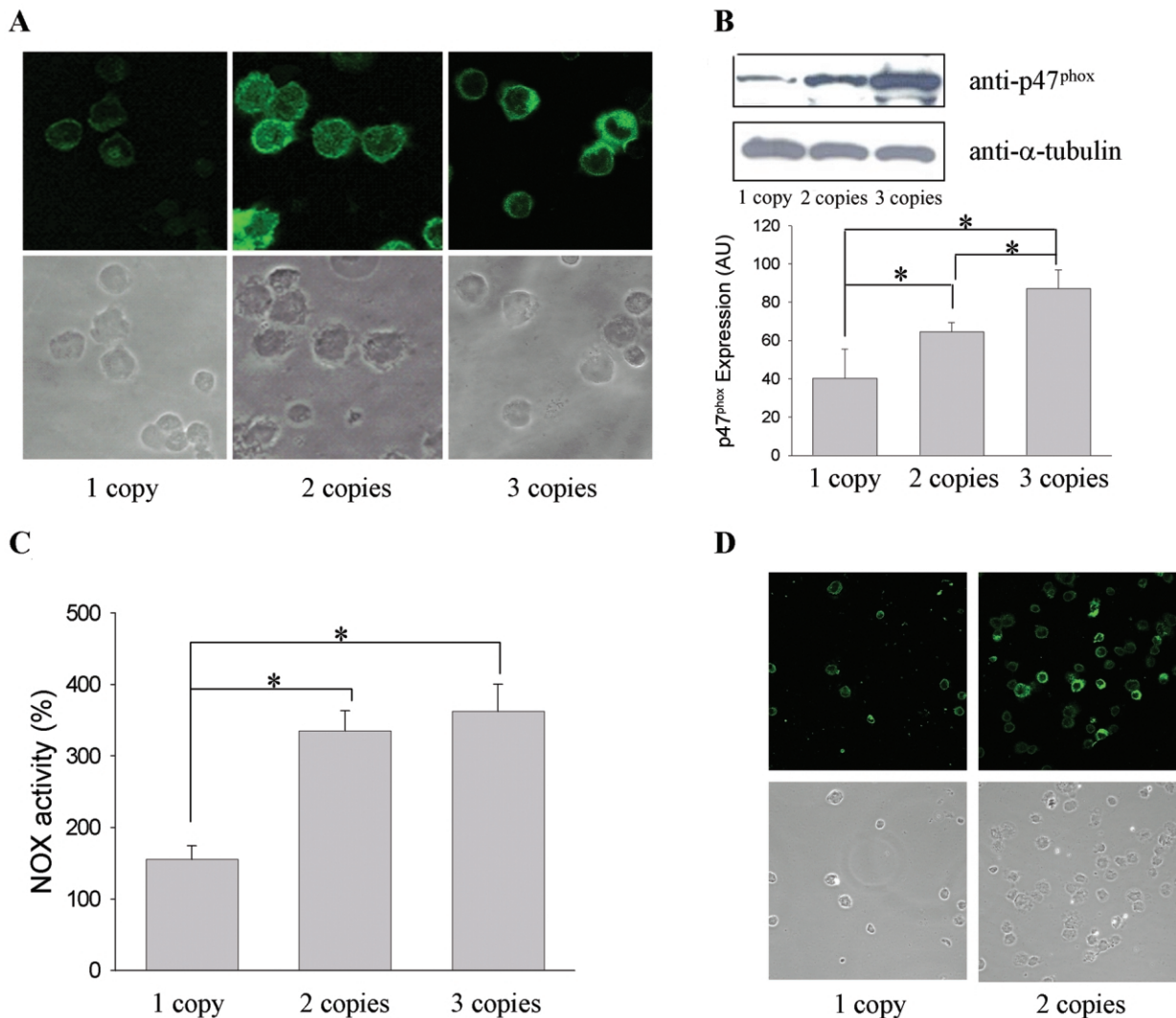
tion for patients with only one gene-type copy of *NCF1*, when compared with individuals with two ( $P = .007$ ; Student's *t* test) or three ( $P = .012$ ; Student's *t* test) gene-type copies. However, there was no significant difference ( $P = .29$ ; Student's *t* test) between samples with two and three gene-type copies (fig. 4C).

Finally, presuming that a consequence of *NCF1* haploinsufficiency could be less activity of the NOX complex and higher bioavailability of nitric oxide, we compared basal levels of protein nitrotyrosination between cell lines by immunocytochemistry. Nitrotyrosination levels were high, on average, although highly variable among cells with two *NCF1* copies, whereas cells with only one copy showed a more homogeneous pattern, with overall lower levels of nitrotyrosination (fig. 4D). Protein nitrotyrosination reflects the effect on proteins of the highly reactive peroxynitrite, which is formed by the reaction of superoxide and nitric oxide.

#### Discussion

We reviewed the major clinical manifestations of 96 patients with WBS and defined, in detail, their molecular lesion, including parental origin of the deletions and fine mapping of the deletion breakpoints. As for other published series, the WBS phenotype is complex and variable, and some clinical manifestations are age dependent. The molecular bases of this phenotypic variability remain unknown. Differences in the size or location of the breakpoints of the deleted interval, genetic variants in the nondeleted allele, subtle imprinting effects, and the genetic background and environmental factors may all contribute to the variable expression of the phenotype. Partial deletions of the interval have been identified in a few atypical patients and have revealed a potential contribution to the phenotype for the specific genes for which the studied families are hemizygous (Hirota et al. 2003; Morris et al. 2003; Pérez Jurado 2003; Tassabehji 2003; Howald et al. 2005). However, no *cis*- or *trans*-acting factors have yet been implicated in the etiology of phenotypic differences in patients with common deletions that appear identical in size.

We found interesting associations among the explored variables, such as cardiovascular stenoses being more frequent in males, as reported elsewhere (Sadler et al. 2001), and microcephaly occurring more frequently with maternally inherited deletions. Correlation of shorter stature and microcephaly with maternally inherited deletions had been suggested in the past but not confirmed in other series (Pérez Jurado et al. 1996; Wang et al. 1999). The recent finding of preferential hotspots for NAHR in male and female meiosis (L.A.P.J., unpublished data) indicates that parental origin of the deletion should always be considered in association with detailed mapping of deletion breakpoints. When that is considered, our results



**Figure 4** Expression and functional analyses of *NCF1* copy number in cell lines. *A*, Immunodetection of p47<sup>phox</sup> by cytochemistry. *B*, Western-blot analysis and quantification of expression levels of p47<sup>phox</sup> versus  $\alpha$ -tubulin. Mean values for expression levels in arbitrary units (AU) for the different groups with 1, 2, and 3 gene-type copies of *NCF1* reflect an increase in protein expression. An asterisk (\*) indicates significant difference ( $P < .05$ ). *C*, Reduction of NBT, shown as the percentage of NOX activation after PMA treatment, with respect to basal conditions for each cell line. Mean values are 155.55, 335.31, and 362.42 for the groups with one, two, and three copies, respectively. The activation is significantly lower when there is one functional copy of the gene, in comparison with two copies ( $P = .006$ ;  $t$  test) and three copies ( $P = .01$ ;  $t$  test). An asterisk (\*) indicates significant difference ( $P < .05$ ). *D*, Detection of nitrotyrosination by immunocytochemistry.

point again to the possibility that genomic imprinting that affects genes in the region might play a role in determining head size. This finding deserves to be explored in further depth and in larger series as a potential determinant of phenotypic variation.

The most remarkable finding of this study concerns hypertension, an important yet inconsistent feature of WBS. High blood pressure is the only explored clinical variable strongly associated with the location of the deletion breakpoint, such that its prevalence among patients with WBS is significantly increased when *NCF1*

is not included in the deletion. A significant association is also found for hypertension and some *GTF2IRD2* variants. However, although little information is yet available about *GTF2IRD2* function, our data suggest that it is less likely that *GTF2IRD2* is the gene responsible for the variable blood pressure. Individuals with WBS who have *GTF2IRD2* variants that result in deletion of one medial copy (1M+2T) or a chimeric copy (1M+1Ch+2T) are predicted to carry hypomorphic alleles. The variant 2T+2M implies that the WBS chromosome maintains both functional *GTF2IRD2* gene copies, as

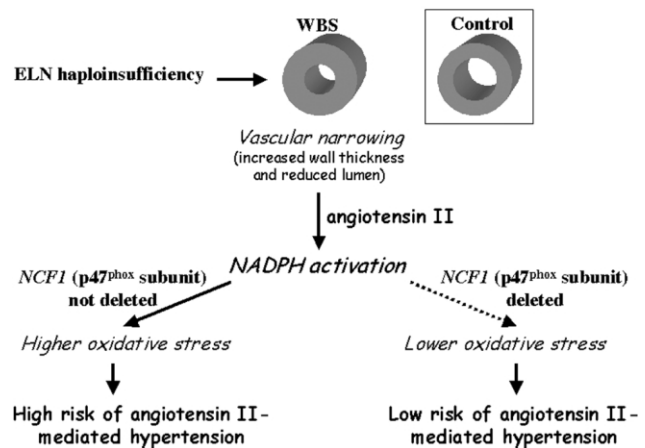
in controls, and consequently should be considered non-functional, whereas the variant 1M+3T could be either non-functional or even hypermorphic, in cases in which the telomeric and ancestral copy is more active (Antonell et al. 2005). The two theoretically non-functional *GTF2IRD2* variants have opposite associations with hypertension: 2T+2M that never entails *NCF1* deletion is strongly associated with hypertension risk, whereas 1M+3T, linked to *NCF1* hemizyosity, is associated with protection for hypertension. On the contrary, the predicted hypomorphic variants are not associated at all with hypertension ( $P = .33$ ; Fisher's exact test). These data suggest that *NCF1*—and not *GTF2IRD2*—is the major player that determines a different prevalence of hypertension in this population, whereas *GTF2IRD2* variants have significant association simply because most rearrangements affect *NCF1* and *GTF2IRD2* together.

*NCF1* encodes a cytosolic subunit of NOX complex, p47<sup>phox</sup>, which is mutated in the autosomal recessive form of chronic granulomatous disease (MIM 233700). We have demonstrated that *NCF1* hemizyosity determines a notable reduction in p47<sup>phox</sup> protein levels and, consequently, a significant reduction in the ability to generate oxidative stress through decreased activity of the NOX complex. This appears to have a protective effect against hypertension in patients with WBS who are hemizygous for *NCF1*, who would otherwise be susceptible to hypertension due to vascular narrowing caused by *ELN* deletion. In fact, there is strong evidence that haploinsufficiency at the *ELN* locus predisposes to arterial vasculopathy, including hypertension. Animal experimentation has shown that decreased elastin leads to structural changes in vessel walls, with thinner elastic lamellae and an increased number of smooth-muscle cell layers, changes also reported in the arteries of patients with isolated SVAS (Li et al. 1998). These changes in the inner and outer vessel diameter correlate with alterations in transmural pressure. Mice with heterozygous *Eln* deletions are all stably hypertensive and develop mild cardiac hypertrophy (Faury et al. 2003). These mice have elevated renin levels, and their higher mean arterial pressure can be reduced with angiotensin II inhibitors, which suggests that the renin-angiotensin system plays a significant role in maintaining their high blood pressure.

Compelling evidence has accumulated to support a role for reactive oxygen species (ROS) in various forms of hypertension (Touyz 2005). Chronic infusion of angiotensin II in rats increases vascular NOX-derived ROS preceded by a prominent expression of the p47<sup>phox</sup> subunit of NOX in the vasculature, macula densa, and distal nephron (Chabrashvili et al. 2002). High intraluminal pressure itself, by activating vascular oxidases, elicits increased superoxide production via activation of the NOX system (Ungvari et al. 2003). Studies per-

formed in *Ncf1* knockout mice have revealed that p47<sup>phox</sup> is one of the major effectors of angiotensin II action. The administration of angiotensin II did not lead to increased superoxide production and elevation of blood pressure in homozygous knockout animals, as it did in wild-type mice (Landmesser et al. 2002). This knockout mouse model somehow reproduces the unique situation in patients with WBS.

We have proven there is dose sensitivity for *NCF1* gene expression and resulting effects on NOX activity. We therefore propose that the association found between hypertension and the genotype at *NCF1* reflects a significant implication of redox homeostasis in the pathogenesis of hypertension in WBS. Elastin deficiency leads to microscopic vascular narrowing and decreased vascular wall elasticity, regardless of whether it is visible on standard ultrasound or angiogram imaging. This is a predisposing factor to angiotensin II elevation, which may lead to clinical hypertension in only those cases in which the ability to generate higher oxidative stress is normal; that is, when two or more active copies of *NCF1* are present (fig. 5). We have also shown that an increase in *NCF1* gene-copy number (three copies), present in 13% of patients, does not lead to increased prevalence of hypertension in WBS nor does it determine a greater activation of NOX, despite increased p47<sup>phox</sup> protein ex-



**Figure 5** Proposed pathogenic mechanism of hypertension in WBS. *ELN* haploinsufficiency in all patients with WBS and a 7q11.23 deletion is known to lead to structural changes in vessel walls mediated by endothelial cell proliferation and smooth-muscle reorganization, resulting in decreased vascular lumen. The resulting increased wall stress would lead to chronic activation of the NOX system via angiotensin II. Quantitative differences in protein levels of the p47<sup>phox</sup> subunit, depending on deletion subtypes and the resulting *NCF1* copy number, determine differences in NADPH enzyme bioavailability. Therefore, patients with a deletion of *NCF1* would have a decreased angiotensin II-mediated free-radical production and a decreased risk of hypertension.



pression. In addition, we found identical frequencies of this genomic variant in a cohort of patients with essential hypertension and in normotensive controls. Therefore, this polymorphic variant does not appear to have a significant influence in the etiology of essential hypertension in the general population. If *NCF1* deletion is a protecting factor for hypertension, why does *NCF1* duplication not increase the risk? The most likely explanation for this finding is the fact that the NOX complex is heteromultimeric and requires stoichiometric amounts of at least each cytosolic subunit (p40, p47, and p67) (Lapouge et al. 2002), so that an increase in copy number of just one of the subunits may not lead to a significant increase in the oxidase activity. Alternative explanations are that the extra copies of *NCF1* might, in fact, be nonfunctional pseudogene(s) due to undetected sequence changes other than the GT insertion/deletion variant and/or that the polymorphic variant might still have some influence, but only when other genetic or environmental factors concur.

Increasing evidence implicates ROS in the pathogenesis of hypertension and its cardiovascular complications (Touyz 2005). By altering the balance in the endothelium between vasoconstrictors and vasodilators such as nitric oxide, ROS contributes to endothelium-dependent contractions and increased vascular resistance. Moreover, the production of peroxynitrite is damaging to the cells through nitrotyrosination of proteins. Antioxidants could restore endothelial function and decrease blood pressure in several models of hypertension, implicating angiotensin II and the redox system (Touyz 2004), but their clinical benefit in essential hypertension in humans remains unconfirmed. In WBS, the results of the present study suggest that antioxidant treatment could have protective effects for hypertension, since the pathogenetic implication of the redox system seems clear. In addition to general antioxidants, anti-NADPH agents (still in clinical trials), the well-known inhibitors of the angiotensin-converting enzyme, and blockers of the angiotensin II receptor could all have a specific indication in patients with WBS. Given that hypertension causes significant morbidity in WBS, contributing to complications such as stroke, cardiac ischemia, and sudden death (Bird et al. 1996; Wollack et al. 1996), the initiation of clinical trials in patients with WBS seems pertinent.

Our results also underscore the relevance and potential success of detailed molecular and clinical characterization of patients with a genomic disorder for obtaining precise correlations that may lead to the determination of causal genes and pathogenic mechanisms. Future detailed evaluation of other highly variable phenotypic features of WBS, such as the complex neurocognitive profile, is warranted.

## Acknowledgments

We thank Victoria Campuzano for critical reading, Roser Corominas and Mireia Coma for excellent technical assistance, and Mariano Sentí and Jaume Marrugat for providing samples of hypertensive and control individuals. A.A. was supported by the Departament d'Universitats, Recerca i Societat de la Informació and Generalitat de Catalunya grant FI02-00790. L.F.M. was supported by the Fondo de Investigación Sanitaria, Spanish Ministry of Health grant FPI-99/9083. This work was supported by grants from the Spanish Ministries of Science and Education (SAF2004-6382) and Health (Networks of Cooperative Research grants C03/07, G03/045, and G03/184), Genome Spain (grant JLI/038), and the Fondation Jérôme Lejeune.

## Web Resource

The URL for data presented herein is as follows:

Online Mendelian Inheritance in Man (OMIM), <http://www.ncbi.nlm.nih.gov/Omim/> (for WBS, *ELN*, *GTF2I*, *NCF1*, *GTF2IRD2* alpha and beta, and chronic granulomatous disease)

## References

- Antonell A, De Luis O, Domingo-Roura X, Pérez-Jurado LA (2005) Evolutionary mechanisms shaping the genomic structure of the Williams Beuren syndrome chromosomal region at human 7q11.23. *Genome Res* 15:1179–1188
- Bayés M, Magano LF, Rivera N, Flores R, Pérez Jurado LA (2003) Mutational mechanisms of Williams-Beuren syndrome deletions. *Am J Hum Genet* 73:131–151
- Bird LM, Billman GF, Lacro RV, Spicer RL, Jariwala LK, Hoyme HE, Zamora-Salinas R, Morris C, Viskochil D, Frikke MJ, Jones MC (1996) Sudden death in Williams syndrome: report of ten cases. *J Pediatr* 129:926–931
- Chabrashvili T, Tojo A, Onozato ML, Kitiyakara C, Quinn MT, Fujita T, Welch WJ, Wilcox CS (2002) Expression and cellular localization of classic NADPH oxidase subunits in the spontaneously hypertensive rat kidney. *Hypertension* 39:269–274
- Cherniske EM, Carpenter TO, Klaiman C, Young E, Bregman J, Insogna K, Schultz RT, Pober BR (2004) Multisystem study of 20 older adults with Williams syndrome. *Am J Med Genet A* 131:255–264
- Faury G, Pezet M, Knutsen RH, Boyle WA, Heximer SP, McLean SE, Minkes RK, Blumer KJ, Kovacs A, Kelly DP, Li DY, Starcher B, Mecham RP (2003) Developmental adaptation of the mouse cardiovascular system to elastin haploinsufficiency. *J Clin Invest* 112:1419–1428
- Francke U (1999) Williams syndrome: genes and mechanisms. *Hum Mol Genet* 8:1947–1954
- Gorlach A, Lee PL, Roesler J, Hopkins PJ, Christensen B, Green ED, Chanock SJ, Curnutte JT (1997) A p47-phox pseudogene carries the most common mutation causing p47-phox-deficient chronic granulomatous disease. *J Clin Invest* 100:1907–1918
- Greenberg F (1990) Williams syndrome professional symposium. *Am J Med Genet Suppl* 37:85–88
- Hall JG, Froster-Iskenius UG, Allanson JE (eds) (1989) *Handbook of physical measurements*. Oxford University Press, New York
- Heyworth PG, Noack D, Cross AR (2002) Identification of a novel *NCF-1* (p47-phox) pseudogene not containing the signature GT deletion: significance for A47 degrees chronic granulomatous disease carrier detection. *Blood* 100:1845–1851
- Hirota H, Matsuoka R, Chen XN, Salandanan LS, Lincoln A, Rose

- FE, Sunahara M, Osawa M, Bellugi U, Korenberg JR (2003) Williams syndrome deficits in visual spatial processing linked to GTF2IRD1 and GTF2I on chromosome 7q11.23. *Genet Med* 5:311–321
- Horan MJ (1987) Curves for hypertension in children. *Pediatrics* 79:1–25
- Howald C, Merla G, Digilio MC, Amenta S, Lyle R, Deutsch S, Choudhury U, Bottani A, Antonarakis SE, Fryssira H, Dallapiccola B, Raymond A (2005) Two high-throughput technologies to detect segmental aneuploidies identify new Williams-Beuren syndrome patients with atypical deletions. *J Med Genet* (<http://jmg.bmjournals.com/cgi/content/abstract/jmg.2005.034009v1>) (electronically published July 1, 2005; accessed January 18, 2006)
- Kearney PM, Whelton M, Reynolds K, Muntner P, Whelton PK, He J (2005) Global burden of hypertension: analysis of worldwide data. *Lancet* 365:217–223
- Landmesser U, Cai H, Dikalov S, McCann L, Hwang J, Jo H, Holland SM, Harrison DG (2002) Role of p47(phox) in vascular oxidative stress and hypertension caused by angiotensin II. *Hypertension* 40:511–515
- Lapouge K, Smith SJ, Groemping Y, Rittinger K (2002) Architecture of the p40-p47-p67phox complex in the resting state of the NADPH oxidase: a central role for p67. *J Biol Chem* 277:10121–10128
- Li DY, Toland AE, Boak BB, Atkinson DL, Ensing GJ, Morris CA, Keating MT (1998) Novel arterial pathology in mice and humans hemizygous for elastin. *J Clin Invest* 102:1783–1787
- Masia R, Pena A, Marrugat J, Sala J, Vida J, Pavesi M, Covas M, Aubo C, Elosúa R, REGICOR Investigators (1998) High prevalence of cardiovascular factors in Girona, Spain, a province with low myocardial infarction incidence. *J Epidemiol Community Health* 52:707–715
- Morris CA, Mervis CB, Hobart HH, Gregg RG, Bertrand J, Ensing GJ, Sommer A, Moore CA, Hopkin RJ, Spallone PA, Keating MT, Osborne L, Kimberley KW, Stock AD (2003) GTF2I hemizygosity implicated in mental retardation in Williams syndrome: genotype-phenotype analysis of five families with deletions in the Williams syndrome region. *Am J Med Genet A* 123:45–59
- Partsch CJ, Dreyer G, Gosch A, Winter M, Schneppenheim R, Wessel A, Pankau R (1999) Longitudinal evaluation of growth, puberty, and bone maturation in children with Williams syndrome. *J Pediatr* 134:82–89
- Peoples R, Franke Y, Wang Y-K, Pérez-Jurado L, Paperna T, Cisco M, Francke U (2000) A physical map, including a BAC/PAC clone contig, of the Williams-Beuren syndrome-deletion region at 7q11.23. *Am J Hum Genet* 66:47–68
- Pérez Jurado LA (2003) Williams-Beuren syndrome: a model of recurrent genomic mutation. *Horm Res Suppl* 59:106–113
- Pérez Jurado LA, Peoples R, Kaplan P, Hamel BC, Francke U (1996) Molecular definition of the chromosome 7 deletion in Williams syndrome and parent-of-origin effects on growth. *Am J Hum Genet* 59:781–792
- Pérez Jurado LA, Wang YK, Peoples R, Coloma A, Cruces J, Francke U (1998) A duplicated gene in the breakpoint regions of the 7q11.23 Williams-Beuren syndrome deletion encodes the initiator binding protein TFII-I and BAP-135, a phosphorylation target of BTK. *Hum Mol Genet* 7:325–334
- Sadler LS, Pober BR, Grandinetti A, Scheiber D, Fekete G, Sharma AN, Urban Z (2001) Differences by sex in cardiovascular disease in Williams syndrome. *J Pediatr* 139:849–853
- Stromme P, Bjornstad PG, Ramstad K (2002) Prevalence estimation of Williams syndrome. *J Child Neurol* 17:269–271
- Tassabehji M (2003) Williams-Beuren syndrome: a challenge for genotype-phenotype correlations. *Hum Mol Genet Spec* 2 12:R229–R237
- Tassabehji M, Hammond P, Karmiloff-Smith A, Thompson P, Thorgeirsson SS, Durkin ME, Popescu NC, Hutton T, Metcalfe K, Rucka A, Stewart H, Read AP, Maconochie M, Donnai D (2005) GTF2IRD1 in craniofacial development of humans and mice. *Science* 310:1184–1187
- Tipney HJ, Hinsley TA, Brass A, Metcalfe K, Donnai D, Tassabehji M (2004) Isolation and characterisation of GTF2IRD2, a novel fusion gene and member of the TFII-I family of transcription factors, deleted in Williams-Beuren syndrome. *Eur J Hum Genet* 12:551–560
- Touyz RM (2004) Reactive oxygen species, vascular oxidative stress, and redox signaling in hypertension: what is the clinical significance? *Hypertension* 44:248–252
- (2005) Intracellular mechanisms involved in vascular remodeling of resistance arteries in hypertension: role of angiotensin II. *Exp Physiol* 90:449–455
- Ungvari Z, Csiszar A, Huang A, Kaminski PM, Wolin MS, Koller A (2003) High pressure induces superoxide production in isolated arteries via protein kinase C-dependent activation of NAD(P)H oxidase. *Circulation* 108:1253–1258
- Valero MC, de Luis O, Cruces J, Pérez Jurado LA (2000) Fine-scale comparative mapping of the human 7q11.23 region and the orthologous region on mouse chromosome 5G: the low-copy repeats that flank the Williams-Beuren syndrome deletion arose at breakpoint sites of an evolutionary inversion(s). *Genomics* 69:1–13
- Wang MS, Schinzel A, Kotzot D, Balmer D, Casey R, Chodirker BN, Gyftodimou J, Petersen MB, Lopez-Rangel E, Robinson WP (1999) Molecular and clinical correlation study of Williams-Beuren syndrome: no evidence of molecular factors in the deletion region or imprinting affecting clinical outcome. *Am J Med Genet* 86:34–43
- Wollack JB, Kaifer M, LaMonte MP, Rothman M (1996) Stroke in Williams syndrome. *Stroke* 27:143–146