

practice nurses, who are often the main providers of cervical screening in general practice. Uptake tends to be lower in practices with more patients who are socially deprived or from ethnic minority groups,<sup>5</sup> and non-responders may be at increased risk of cervical cancer.

There are alternatives for women who find a conventional speculum examination unacceptable. An Australian study of women attending family planning clinics found that 67% (133/198) agreed to insert their own speculum, and of these, 90% would choose to do it again. The main barrier was women feeling unsure how to self insert a speculum.<sup>6</sup> In future, screening might be based on detection of specific human papillomavirus (HPV) subtypes and additional biomarkers for risk of cervical cancer. This might allow the use of self-taken vaginal samples, which could be done either in the clinic or at home. Although response rates might be low, non-responders to cervical screening could be sent postal swabs, and women who are found to have persistent infection with HPV 16 or 18 could be invited to attend for further evaluation.

The paper by Seehusen and colleagues should change clinical practice away from the routine use of stirrups. If cervical screening becomes more user friendly, this could lead to increased coverage. The study also highlights the need for doctors and nurses to respect the patient's integrity when doing vaginal examinations, and shows how trials can be used to assess issues that are important to patients.

We thank Phyllis Moore and Sima Hay for advice.

Funding: BUPA Foundation.

Competing interests: None declared.

- 1 Seehusen DA, Johnson DR, Earwood JS, Sethuraman SN, Cornali J, Gillespie K, et al. Improving women's experience during speculum examinations at routine gynaecological visits: randomised clinical trial. *BMJ* 2006;333:171-3.
- 2 Sandelowski MR. This most dangerous instrument: propriety, power and the vaginal speculum. *J Obstet Gynecol Neonat Nurs* 2000;29:73-82.
- 3 Royal College of Obstetricians and Gynaecologists. *Gynaecological examinations: guidelines for specialist practice*. London: RCOG, 2002.
- 4 Coldicott Y, Pope C, Roberts C. The ethics of intimate examinations-teaching tomorrow's doctors. *BMJ* 2003;326:97-101.
- 5 Majeed FA, Cook DG, Anderson HR, Hilton S, Bunn S, Stones C. Using patient and general practice characteristics to explain variations in cervical smear uptake rates. *BMJ* 1994;308:1272-6.
- 6 Wright D, Fenwick J, Stephenson P, Monterosso L. Speculum self-insertion: a pilot study. *J Clinical Nursing* 2005;14:1098-111.

## Whooping cough in school age children with persistent cough: prospective cohort study in primary care

Anthony Harnden, Cameron Grant, Timothy Harrison, Rafael Perera, Angela B Brueggemann, Richard Mayon-White, David Mant

Editorial by Butler, et al

Department of Primary Health Care, University of Oxford, Oxford OX3 7LF

Anthony Harnden  
university lecturer

Rafael Perera  
senior research fellow  
in statistics

Angela B  
Brueggemann  
senior research fellow  
in molecular biology

Richard

Mayon-White

epidemiologist

David Mant

professor of general  
practice

Department of Paediatrics, University of Auckland, Starship Children's Hospital, Auckland, New Zealand

Cameron Grant  
associate professor of  
paediatrics

continued over

*BMJ* 2006;333:174-7

### Abstract

**Objective** To estimate the proportion of school age children with a persistent cough who have evidence of a recent *Bordetella pertussis* infection.

**Design** Prospective cohort study (October 2001 to March 2005).

**Setting** General practices in Oxfordshire, England.

**Participants** 172 children aged 5-16 years who presented to their general practitioner with a cough lasting 14 days or more who consented to have a blood test.

**Main outcome measures** Serological evidence of a recent *Bordetella pertussis* infection; symptoms at presentation; duration and severity of cough; sleep disturbance (parents and child).

**Results** 64 (37.2%, 95% confidence interval 30.0% to 44.4%) children had serological evidence of a recent *Bordetella pertussis* infection; 55 (85.9%) of these children had been fully immunised. At presentation, children with whooping cough were more likely than others to have whooping (odds ratio 2.85, 95% confidence interval 1.39 to 5.82), vomiting (4.35, 2.04 to 9.25), and sputum production (2.39, 1.14 to 5.02). Children with whooping cough were also more likely to still be coughing two months after the start of their illness (85% v 48%;  $P = 0.001$ ), continue to have more than five coughing episodes a day ( $P = 0.049$ ), and cause sleep disturbance for their parents ( $P = 0.003$ ).

**Conclusions** For school age children presenting to primary care with a cough lasting two weeks or more, a diagnosis of whooping cough should be considered even if the child has been immunised. Making a secure diagnosis of whooping cough may prevent inappropriate investigations and treatment.

### Introduction

School age children with a persistent cough present general practitioners with diagnostic and management dilemmas. A precise diagnosis is often difficult for the doctor, but parents are anxious for an explanation. Children commonly receive empirical treatment for asthma and may be referred for further investigation.<sup>1</sup> These investigations often fail to yield a clinical reason for the cough, which can last for months.

Studies in the United States report a 20% incidence of *Bordetella pertussis* infection among adults with a persistent cough.<sup>2</sup> Despite data showing that neither infection nor immunisation results in lifelong immunity, whooping cough is seldom diagnosed in primary care because of the lack of specificity of clinical symptoms and signs. Whooping cough is perceived as a disease of very young children who have not been immunised and who have classic features such as whoop. Notifications among older children in England and Wales have been low for several years.<sup>3</sup>

This article was posted on *bmj.com* on 7 July 2006: <http://bmj.com/cgi/doi/10.1136/bmj.38870.655405.AE>

We aimed to estimate the community prevalence of whooping cough among a population of children who presented to primary care with persistent cough and to describe associated clinical features and duration of cough.

## Methods

### Participants

Between October 2001 and March 2005 we prospectively recruited 179 children aged 5 to 16 years inclusive who had been coughing for 14 days or more. General practitioners from 18 practices in Oxfordshire identified children during the consultation and referred them to study nurses. Each child was seen by a study nurse either at the practice or in the child's home. We excluded seven children because we failed to obtain consent to take blood.

### Data collection

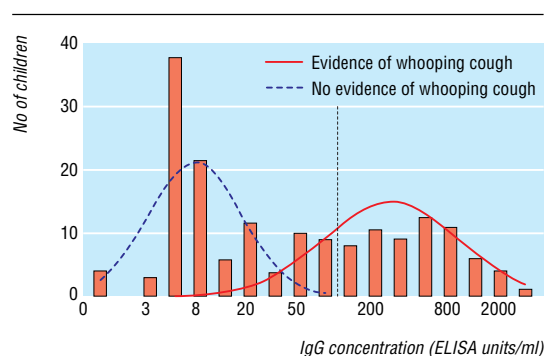
We recorded a detailed cough history at presentation: duration of cough; presence of coughing spasms, whoop, post-cough vomiting, apnoea, sputum production, wheeze, and exercise limitation; and history of cough in household members. We asked parents for details of their child's immunisations and verified any information they gave from the parent held record or medical notes. After recruitment, we asked parents and children to complete a daily cough diary for two weeks and then a weekly diary for the duration of the cough.

### Serological diagnosis

We took a blood sample at presentation for all children and sent it to the Respiratory and Systemic Infection Laboratory of the Health Protection Agency Centre for Infections in Colindale, London for estimation of IgG titres to pertussis toxin. For children who had been coughing for between 14 and 28 days at presentation, we sought consent to take a second blood sample four to six weeks after the initial sample. We made a diagnosis of a recent *Bordetella pertussis* infection if we found a fourfold change in IgG antibody titre to pertussis toxin in paired samples or a single IgG titre to pertussis toxin that was greater than 100 ELISA units/ml.<sup>4</sup> We informed participating practices of all individual serology results.

### Sample size and statistical analysis

Our original target was to recruit a minimum of 50 cases of whooping cough in order to achieve adequate precision ( $\pm 5\%$  with a whooping cough prevalence of 20%). In fact, we recruited 64 cases. We used logistic regression to obtain adjusted odds ratios for the symptoms recorded at presentation. We plotted the serological data on a logarithmic scale and fitted a mixture of two normal distributions (fig 1). We obtained the parameters for the Gaussian curves by using a mixture of two normal components to model the IgG antibody titre (log base 10) to pertussis toxin by minimising its log-likelihood function. The duration and severity of cough and sleep disturbance are presented as Kaplan-Meier plots. We tested the significance of the difference between children according to serology by using the log rank statistic.



**Fig 1** IgG antibody titre to pertussis toxin. The black line indicates the 100 ELISA units/ml IgG concentration used as cut-off point for a positive diagnosis

## Results

We estimated from practice audit that we recruited 62% (179/289) of eligible children into our study; 172 (96%) recruited children consented to give a blood sample. Sixty four (37.2%, 95% confidence interval 30.0% to 44.4%) of these children had serological evidence of a recent *Bordetella pertussis* infection.

No differences in age and sex between children with positive and negative serology existed at presentation, but those with positive serology were more likely to have whooping, vomiting, and sputum production and less likely to wheeze (table). The mean duration of cough at presentation was 45 days for children with positive serology and 44 days for those with negative

Symptoms at presentation and demographic, personal, and family characteristics by serology results for *Bordetella pertussis* among 172 children with persistent cough ( $\geq 14$  days). Values are numbers (percentages) unless stated otherwise

Characteristic	Serology*		Odds ratio (95% CI)	
	Positive (n=64)	Negative (n=108)	Crude	Adjusted†
<b>Demographic</b>				
Mean (range) age (years)	9.8 (5 to 16.8)	9.1 (5 to 16.9)	–	–
Male sex	36 (56.3)	58 (53.7)	1.11 (0.60 to 2.06)	–
<b>Personal</b>				
Immunisation‡	55 (85.9)	104 (97.2)	0.18 (0.05 to 0.68)	–
Asthma	15 (23.4)	26 (24.1)	0.97 (0.47 to 2.00)	–
<b>Family</b>				
Smoking§¶	20 (31.7)	42 (42.0)	0.64 (0.33 to 1.25)	–
Household member coughing	34 (53.1)	46 (42.6)	1.53 (0.82 to 2.84)	–
<b>Symptoms</b>				
Whooping‡	32 (50.0)	29 (27.1)	2.69	2.85 (1.39 to 5.82)
Vomiting	45 (70.3)	42 (38.9)	3.72	4.35 (2.04 to 9.25)
Paroxysms of coughing	55 (85.9)	82 (75.9)	1.94	1.87 (0.76 to 4.62)
Apnoea	14 (21.9)	12 (11.1)	2.24	2.03 (0.81 to 5.09)
Cyanosis	6 (9.4)	6 (5.6)	1.76	2.00 (0.51 to 7.88)
Sputum production§	44 (69.8)	60 (55.6)	1.85	2.39 (1.14 to 5.02)
Sweating§	24 (38.1)	56 (51.9)	0.57	0.70 (0.35 to 1.38)
Sinus pain‡	9 (14.1)	23 (21.5)	0.60	0.65 (0.26 to 1.61)
Sneezing	29 (45.3)	59 (54.6)	0.69	0.51 (0.25 to 1.03)
Headache‡	29 (45.3)	63 (58.9)	0.58	0.72 (0.37 to 1.41)
Wheezing	19 (29.7)	47 (43.5)	0.55	0.47 (0.22 to 0.99)

\*Positive serology defined as a IgG titre to pertussis toxin of >100 ELISA units/ml for 63 children and fourfold change in paired sera for one child.

†Adjusted for age, sex, immunisation, asthma, parent smoking, and household member coughing.

‡Negative serology, n=107.

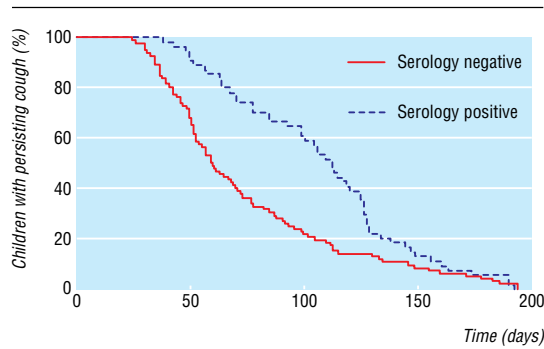
§Positive serology, n=63.

¶Negative serology, n=100.

Respiratory and Systemic Infection Laboratory, Health Protection Agency, Centre for Infections, London NW9 5HT

Timothy Harrison  
deputy director

Correspondence to:  
A Harnden  
anthony.harnden@dphpc.ox.ac.uk



**Fig 2** Proportion of children continuing to cough each day after onset, according to serology

serology. However, the total duration of cough was greater for children with positive serology (median 112 days, range 38 to 191) than for those with negative serology (median 58 days, range 24 to 192). Two months after the start of their symptoms, 85% (46/54) of children with positive serology were still coughing compared with 49% (45/92) of those with negative serology ( $P=0.001$ ) (fig 2). After recruitment, differences existed between the two groups in the severity of cough and the impact of the illness on the child's and parents' sleep (fig 3). No differences existed in the numbers of days off school or parents taking time off work.

Fifty two (81%) children with positive serology were the first member of their household with a cough (a primary case), four (6%) were co-primary cases, and eight (13%) were secondary cases. The proportion of children with a school contact with a cough did not differ between the serology positive group (50% (32/64), 38% to 62%) and serology negative group (39% (42/108), 30% to 48%).

### Discussion

Our results show that a substantial proportion of school age children with persistent cough who present in primary care have evidence of a recent *Bordetella pertussis* infection. Despite this, general practitioners rarely diagnose and notify whooping cough in this age group. Most of the children in our study had received a full set of primary immunisations. Although immunisation failed to protect them against pertussis, it did result in attenuated clinical features. Few of the children had a classical whoop, although most children had coughing spasms followed by vomiting.

The lack of classic clinical features makes it unlikely that the recruited children were a selected group that would cause us to overestimate the prevalence of pertussis among children with a persistent cough. We are more likely to have underestimated the prevalence of pertussis by using a single IgG titre of more than 100 units as our criterion for a positive diagnosis—using an IgG titre of 50 units as our cut-off point would have increased the number of pertussis cases to 74 (43%).

### Comparison with previous research

Previous research in several countries has shown that pertussis is an endemic disease among adolescents and adults.<sup>5-8</sup> Our research suggests that in the United

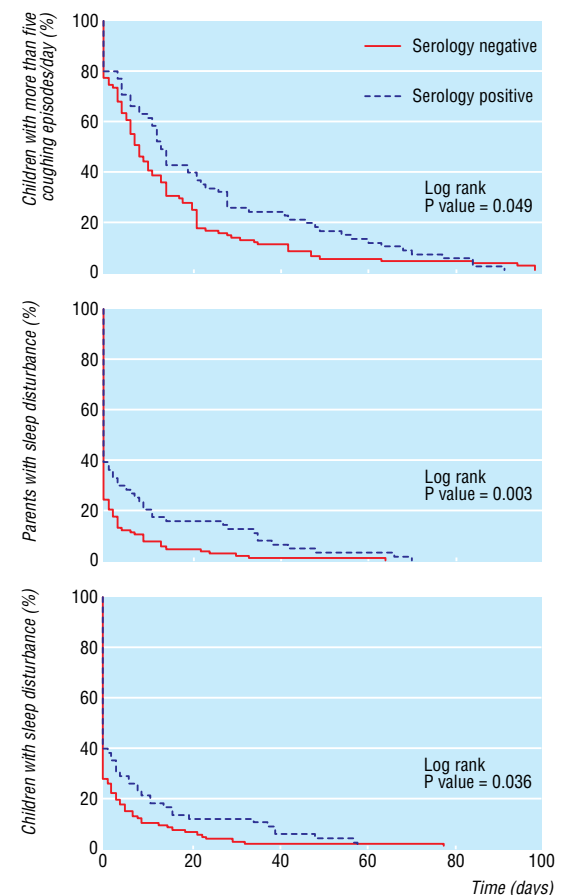
Kingdom pertussis is also endemic among younger school age children. This finding is important because secondary attack rates of pertussis in non-immunised household contacts have been estimated to be 90%.<sup>9</sup> Younger children are more likely than adolescents to have a newborn sibling to whom they could transmit the infection with potentially devastating consequences.

### Implications for immunisation policy

While this study was being done, pertussis immunisation policy in the UK was changed from an accelerated primary course (2, 3, and 4 months) of the whole cell vaccine to an accelerated primary course of the acellular vaccine with a fourth preschool booster dose. Some countries administer five doses of pertussis vaccine. Whether the most recent alteration to the UK vaccine schedule will shift the age of pertussis infections upwards without fully protecting immunised children against the disease remains to be seen.

### Implications for clinical practice

General practitioners should be alert to a potential diagnosis of whooping cough in any child who presents with a persistent cough. We found that children with pertussis cough for a median of 16 weeks. Little evidence indicates that administering erythromycin to children with pertussis two weeks after they have contracted the infection either reduces



**Fig 3** Proportion of children continuing to have more than five coughing episodes a day and proportions of parents and children with sleep disturbance

### What is already known on this topic

International studies have shown that a substantial portion of adolescents and adults with a persistent cough have evidence of a *Bordetella pertussis* infection

Parents are more likely to worry about their child's cough and want further investigations if they do not have a clear diagnosis

### What this study adds

A substantial proportion of immunised school age children presenting to UK primary care with a persistent cough had evidence of a recent infection with *Bordetella pertussis*

symptoms or prevents transmission.<sup>10</sup> However, a secure diagnosis of pertussis will allow general practitioners to give parents an indication of the likely length of cough and prevent them prescribing unnecessary drugs for asthma or referring children for further investigations.

We thank all the participating children and parents and the general practitioners and research nurses for their involvement in recruitment. We are grateful to Andy Pollard, Liz Miller, and Robert George for their help in writing the protocol and to John Duncan for his assistance with the serology.

Contributors: AH, RM-W, and DM obtained funding for the programme of research. AH was principal investigator throughout the study. AH and CG wrote the protocol. TH provided the

serology, and TH and ABB gave microbiological advice. RP did the data analysis, supervised by AH and RM-W. AH wrote the manuscript, and all authors commented on the text. AH is the guarantor.

Funding: The research was funded by the Medical Research Council as part of a programme grant in childhood infection in primary care (G0000340).

Competing interests: None declared.

Ethical approval: Oxfordshire research ethics committee (C00.180).

- 1 Faniran AO, Peat JK, Woolcock AJ. Persistent cough: is it asthma? *Arch Dis Child* 1998;79:411-4.
- 2 Wright SW, Edwards KM, Decker MD, Zeldin MH. Pertussis infection in adults with persistent cough. *JAMA* 1995;171:1044-6.
- 3 Van Buynder PG, Owen D, Vurdién JE, Andrews NJ, Matthews RC, Miller E. *Bordetella pertussis* surveillance in England and Wales: 1995-7. *Epidemiol Infect* 1999;132:403-11.
- 4 De Melker HE, Versteegh FG, Conyn-Van Spaendonck MA, Elvers LH, Berbers GA, van Der Zee A, et al. Specificity and sensitivity of high levels of immunoglobulin G antibodies against pertussis toxin in a single serum sample for diagnosis of infection with *Bordetella pertussis*. *J Clin Microbiol* 2000;38:800-6.
- 5 Robertson PW, Goldberg H, Jarvie BH, Smith DD, Whybin LR. *Bordetella pertussis* infection: a cause of persistent cough in adults. *Med J Aust* 1987;146:522-5.
- 6 Senzilet LD, Halperin SA, Spike JS, Alagaratnam M, Morris A, Smith B. Pertussis is a frequent cause of prolonged cough illness in adults and adolescents. *Clin Infect Dis* 2001;32:1691-7.
- 7 Gilberg S, Njamkepo E, Du Chatelet IP, Partouche H, Gueirard P, Ghasarossian X, et al. Evidence of *Bordetella pertussis* infection in adults presenting with persistent cough in a French area with high whole-cell vaccine coverage. *J Infect Dis* 2002;186:415-8.
- 8 Schmitt-Grohe S, Cherry JD, Heininger U, Uberall MA, Pineda E, Stehr K. Pertussis in German adults. *Clin Infect Dis* 1995;21:860-6.
- 9 Lambert HJ. Epidemiology of a small pertussis outbreak in Kent County, Michigan. *Public Health Rep* 1965;80:365-9.
- 10 Biellik RJ, Patriarca PA, Mullen JR, Rovira EZ, Brink EW, Mitchell P, et al. Risk factors for community and household acquired pertussis during a large scale outbreak in central Wisconsin. *J Infect Dis* 1988;157:1134-41. (Accepted 3 May 2006)

doi 10.1136/bmj.38870.655405.AE

## Perinatal mortality and congenital anomalies in babies of women with type 1 or type 2 diabetes in England, Wales, and Northern Ireland: population based study

Mary C M Macintosh, Kate M Fleming, Jaron A Bailey, Pat Doyle, Jo Modder, Dominique Acolet, Shona Golightly, Alison Miller

Editorial by  
McFarlane and  
Tuffnell

### Abstract

**Objective** To provide perinatal mortality and congenital anomaly rates for babies born to women with type 1 or type 2 diabetes in England, Wales, and Northern Ireland.

**Design** National population based pregnancy cohort.

**Setting** 231 maternity units in England, Wales, and Northern Ireland.

**Participants** 2359 pregnancies to women with type 1 or type 2 diabetes who delivered between 1 March 2002 and 28 February 2003.

**Main outcome measures** Stillbirth rates; perinatal and neonatal mortality; prevalence of congenital anomalies.

**Results** Of 2359 women with diabetes, 652 had type 2 diabetes and 1707 had type 1 diabetes. Women with type 2 diabetes were more likely to come from a black, Asian, or other ethnic minority group (type 2, 48.8%; type 1, 9.1%) and from a deprived area (type 2, 46.3%

in most deprived fifth; type 1, 22.8%). Perinatal mortality in babies of women with diabetes was 31.8/1000 births. Perinatal mortality was comparable in babies of women with type 1 (31.7/1000 births) and type 2 diabetes (32.3/1000) and was nearly four times higher than that in the general maternity population. 141 major congenital anomalies were confirmed in 109 offspring. The prevalence of major congenital anomaly was 46/1000 births in women with diabetes (48/1000 births for type 1 diabetes; 43/1000 for type 2 diabetes), more than double that expected. This increase was driven by anomalies of the nervous system, notably neural tube defects



Two extra tables are on [bmj.com](http://bmj.com)



This is the abridged version of an article that was posted on [bmj.com](http://bmj.com) on 16 June 2006: <http://bmj.com/cgi/doi/10.1136/bmj.38856.692986.AE>

Confidential  
Enquiry into  
Maternal and Child  
Health, London  
NW1 5SD  
Mary C M  
Macintosh  
medical director  
Kate M Fleming  
senior data analyst  
Jaron A Bailey  
health research data  
analyst  
Jo Modder  
obstetric lead  
Dominique Acolet  
neonatal lead  
Shona Golightly  
director of research  
and development  
Alison Miller  
programme director

continued over

BMJ 2006;333:177-80