

Review

Host–parasitoid spatial ecology: a plea for a landscape-level synthesis

James T. Cronin^{1,*} and John D. Reeve²

¹*Department of Biological Sciences, Louisiana State University, Baton Rouge, LA 70803, USA*

²*Department of Zoology, Southern Illinois University, Carbondale, IL 62901-6501, USA*

A growing body of literature points to a large-scale research approach as essential for understanding population and community ecology. Many of our advances regarding the spatial ecology of predators and prey can be attributed to research with insect parasitoids and their hosts. In this review, we focus on the progress that has been made in the study of the movement and population dynamics of hosts and their parasitoids in heterogeneous landscapes, and how this research approach may be beneficial to pest management programs. To date, few studies have quantified prey and predator rates and ranges of dispersal and population dynamics at the patch level—the minimum of information needed to characterize population structure. From host–parasitoid studies with sufficient data, it is clear that the spatial scale of dispersal can differ significantly between a prey and its predators, local prey extinctions can be attributed to predators and predator extinction risk at the patch level often exceeds that of the prey. It is also evident that populations can be organized as a single, highly connected (patchy) population or as semi-independent extinction-prone local populations that collectively form a persistent metapopulation. A prey and its predators can also differ in population structure. At the landscape level, agricultural studies indicate that predator effects on its prey often spill over between the crop and surrounding area (matrix) and can depend strongly on landscape structure (e.g. the proportion of suitable habitat) at scales extending well beyond the crop margins. In light of existing empirical data, predator–prey models are typically spatially unrealistic, lacking important details on boundary responses and movement behaviour within and among patches. The tools exist for conducting empirical and theoretical research at the landscape level and we hope that this review calls attention to fertile areas for future exploration.

Keywords: dispersal behaviour; extinction risk; landscape; metapopulation; spillover effects

1. INTRODUCTION

The classic paper by Pimentel *et al.* (1963) demonstrated that the persistence times of the braconid parasitoid, *Nasonia vitripennis*, and its housefly host, *Musca domestica*, were substantially longer in complex interconnected laboratory cages than in single cages. Similar results were found by Huffaker (1958) for herbivorous and predatory mites among semi-isolated oranges on a laboratory bench. One implication of these studies was that the addition of ‘space–time structure’ to the environment promotes predator–prey coexistence. Building on these classic works, theoretical and empirical evidence over several decades has strongly suggested that spatial considerations such as the size, spatial arrangement, quality and connectivity of habitats and landscape composition can impact animal foraging behaviour, population dynamics, interactions within and among trophic levels and community structure (Kareiva 1987; Ricklefs & Schluter 1993; Gering *et al.* 2003; Tscharrntke & Brandl 2004). In fact, larger-scale processes can potentially dominate local-scale processes (e.g. Steffan-Dewenter *et al.* 2002; Thies *et al.* 2003; Cronin 2004; Cronin & Haynes 2004). From a conservation perspective, the primary threat to global

biodiversity—the loss and fragmentation of suitable habitat (Debinski & Holt 2000; Fahrig 2003)—is a phenomenon that is often best understood at landscape-level scales (e.g. Bascompte & Rodriguez 2001; Tscharrntke *et al.* 2002; Aune *et al.* 2005). Clearly, a large-scale approach to studying population and community ecology is essential (Polis *et al.* 1997; Tscharrntke 2000; Tscharrntke & Brandl 2004).

Many of our advances regarding predator–prey spatial ecology can be attributed to research with hosts and their parasitoids (Godfray 1994; Hawkins 1994; Hassell 2000). Historically, modelling efforts have far surpassed the contributions of empirical research to this field. However, recent empirical work with hosts and parasitoids represents some of the best large-scale research on predator–prey interactions. We focus this review on the movement and dynamics of populations in heterogeneous landscapes, emphasizing research and progress with natural systems. We leave discussion of the spatial distribution of parasitism among host patches and its dynamical effects to the thorough review by Hassell (2000). Community-level issues (e.g. diversity, structure, succession) are also beyond the scope of this review. Predator–prey models that include a spatial aspect are also reviewed and new modelling approaches, particularly those that have been motivated by empiricism, are discussed. Finally, we

* Author for correspondence (jcronin@lsu.edu).

discuss how the field of landscape ecology is helping to shape pest management practices and identify fruitful new research directions for the theoretical and field ecologist.

2. LITERATURE REVIEW

(a) *The structure and dynamics of fragmented populations*

Spatially explicit field studies of host–parasitoid ecology and dynamics have come to the forefront as metapopulation theory has matured. A metapopulation is an assemblage of spatially discrete local populations that are linked together by migration (Levins 1970), a structure thought common to many species (Hanski 1999). One of the most influential and prevalent spatially explicit metapopulation models is the incidence function model (Hanski 1994). This model assumes a finite number of discrete and suitable habitat patches that can vary in size and degree of isolation (Hanski 1999). Furthermore, all patches are assumed equal in quality and are embedded in an inhospitable matrix (akin to an island archipelago). In general, this model framework is likely to be most useful if the following conditions are met (Hanski 1997): (i) all local populations have a substantial risk of extinction; (ii) habitat patches are not so isolated that recolonization is impossible; and (iii) local populations have asynchronous dynamics. The latter condition minimizes the likelihood that all local populations simultaneously go extinct and that the metapopulation persists. These spatially explicit models are appealing because they predict persistence of the ensemble of patches despite evanescent local dynamics (see also Hanski *et al.* 1996a). The model offers useful predictions regarding the effective metapopulation size (minimum number of patches or amount of suitable habitat necessary for long-term persistence), the contribution of each patch to regional persistence and how changes to real landscapes might affect metapopulation dynamics for a single species (Hanski *et al.* 1996b; Hanski & Ovaskainen 2000; Ovaskainen & Hanski 2003, 2004). Spatially realistic models have since been modified to incorporate variation in habitat quality, environmental and demographic stochasticity, spatially and temporally varying environments and within-patch population dynamics (e.g. Gyllenberg *et al.* 1997; Heino *et al.* 1997; Ovaskainen 2002; Ovaskainen & Hanski 2004).

Despite the wealth of single species, spatially explicit population models—the development of models involving predator–prey/host–parasitoid interactions in space—remains rather limited. Classic host–parasitoid models included variation in parasitoid densities across host patches, but also assumed complete remixing of the host and parasitoid population in each generation (e.g. Bailey *et al.* 1962; Hassell & May 1974; May 1978; Hassell *et al.* 1991), making them best suited to describing dynamics on a local scale. Later models linked collections of local populations through a dispersal pool or to their nearest neighbours in a two-dimensional lattice (e.g. Reeve 1988; Comins *et al.* 1992; Wilson & Hassell 1997; Childs *et al.* 2004). Under a variety of conditions, persistence of these systems can occur even when the underlying local dynamics are unstable (see Briggs & Hoopes 2004).

A drawback of these models is the simplistic way in which space and dispersal are described. It is difficult to

see how they could be applied to natural systems, where habitat patches differ in size, spatial arrangement and matrix type. Reaction–diffusion versions of predator–prey models can provide a more realistic description of dispersal behaviour in space, but generally treat space as a continuum (Okubo *et al.* 2001). An exciting recent development has been the incorporation of boundary behaviour for habitat patches within the diffusion framework (Cantrell & Cosner 2003; Ovaskainen & Cornell 2003; Ovaskainen 2004). Combined with recent improvements in software for reaction–diffusion models, it is possible to construct host–parasitoid models across a collection of discrete habitat patches. We are currently developing such models for a planthopper (*Prokelisia crocea*) and its egg parasitoid (*Anagrus columbi*) residing in a landscape consisting of host–plant patches embedded in a heterogeneous matrix (Reeve *et al.* in preparation), in which movement rates and boundary behaviour vary with the composition of the matrix (Haynes 2004). We briefly illustrate this approach on a hypothetical landscape (figure 1) using the software package FEMLAB 3.1 (Comsol AB, Burlington, MA, 2005). The solution process consists of drawing the landscape and then specifying diffusion, oviposition, mortality and parasitoid attack rates within each domain, as well as boundary behaviour on the patch–matrix edge. Numerical solutions are shown in figure 2 for two matrix types, mudflat and brome (a grass), using parameter values estimated from observations of *P. crocea* movement (Reeve *et al.* in preparation). Observations have yet to be made for *A. columbi*, so for simplicity we assume its dispersal behaviour is similar to *P. crocea*. The solutions illustrate the importance of matrix type, patch size and edge behaviour on host and parasitoid abundance. Densities were consistently higher for a cordgrass–mudflat (figure 2a) versus cordgrass–brome landscape (figure 2b), because boundary behaviour on the cordgrass–mudflat landscape retains dispersing insects within cordgrass patches. Large cordgrass patches also had higher densities than small ones, as would be expected, and patches closer to the large central patch also had higher densities.

For parasitoids and their hosts, their small body sizes, high rates of population increase and specific resource requirements are thought to predispose them to metapopulation dynamics (Murphy *et al.* 1990; Bonsall *et al.* 2002; Bonsall & Hastings 2004). To date, there are few field studies that have characterized in detail the movement and spatial (meta)population structure of a host and its parasitoid among spatially discrete habitat patches (table 1). Perhaps, the best-studied example involves the Glanville fritillary (*Melitaea cinxia*) and its specialist braconid parasitoid *Cotesia melitaeorum*. Both *M. cinxia* and *C. melitaeorum* exhibit classic extinction–colonization metapopulation dynamics among dry meadow patches of the Åland islands in southwestern Finland (Lei & Hanski 1997; van Nouhuys & Hanski 2002). As an interesting contrast, van Nouhuys & Hanski (2002) found that the population structure of *Hyposoter horticola* (Ichneumonidae), another parasitoid of *M. cinxia*, is best described as a patchy population. *Hyposoter horticola* is much more dispersive than its host and as a consequence most host patches are occupied. Even at the scale of 3500 km², there was no evidence of genetic population structure for *H. horticola* (Kankare *et al.* 2005).

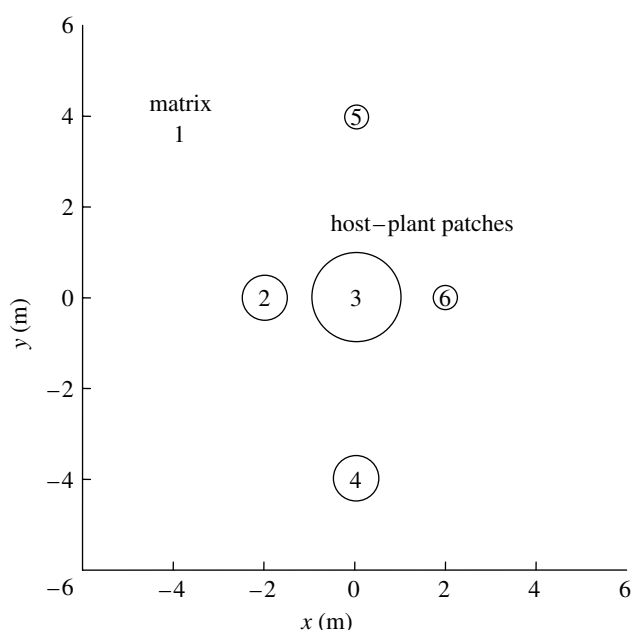


Figure 1. Hypothetical landscape consisting of five circular host–plant patches surrounded by a matrix of grass (smooth brome) or mudflat. The landscape is divided into six domains (matrix=1, patches=2–6). The diffusion models for host and parasitoid movement incorporated boundary behaviour in the form of a biased random walk, where individuals on the patch–matrix boundary move toward the patch with probability k_1 , while $1-k_1$ is the probability for the matrix (Ovaskainen 2004). The outer boundary for the landscape was assumed to be absorbing.

Cronin (2003a,b, 2004) provides another example of extinction–colonization dynamics with *P. crocea* and *A. columbi* in the tall-grass prairies of North America. Host–plant patches (prairie cordgrass) have a heavily skewed size distribution such that a few large patches (greater than 4 ha) are intermixed with many small patches (less than 10 m²). Local planthopper and parasitoid extinctions decrease in likelihood with increasing patch size and no instance of extinction has ever been recorded in the largest patches (Cronin 2004). The population structures of *P. crocea* and *A. columbi* were similar, exhibiting mainland (large patches)–island dynamics (see also Hanski 1986; Harrison 1991; Berendonk & Bonsall 2002).

Most of the studies in table 1 infer parasitoid local dynamics from the distribution of parasitized hosts (Eber & Brandl 1994; Dempster *et al.* 1995a,b; Eber & Brandl 1996, 1997; van der Meijden & van der Veen-van Wijk 1997). Typically, little information is available on the extinction dynamics of the parasitoid independent of host extinctions. The major bottleneck in our understanding of host–parasitoid interactions among spatially discrete patches remains limited information on host, and especially parasitoid dispersal. Secondly, we lack even rudimentary information on the local dynamics of patches within a metapopulation context. These limitations are common to predator–prey and parasite–host systems as well (but see Walde 1994; Antonovics 2004; Keeling *et al.* 2004).

Despite the limited number of case studies, the examples in table 1 serve to highlight several important issues with regard to predator–prey spatial ecology. First, the population structures of these systems are quite

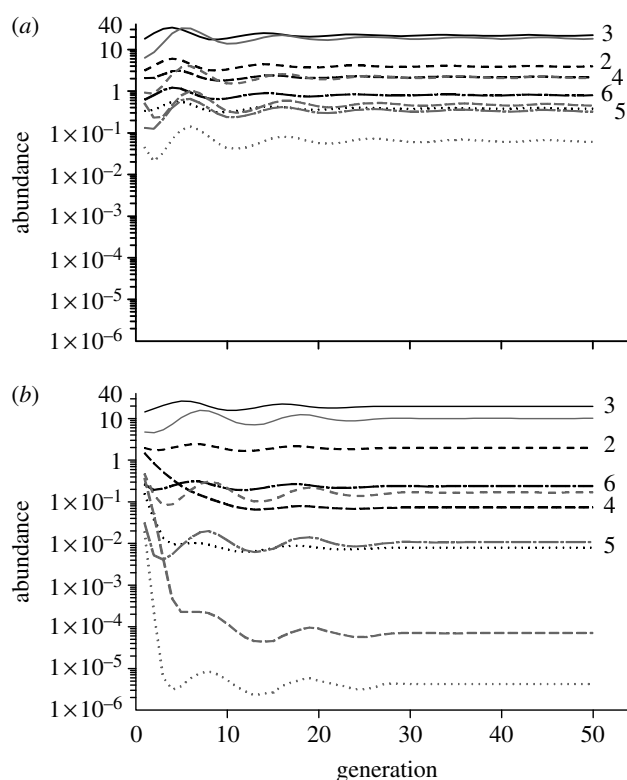


Figure 2. Abundance of host eggs and juvenile parasitoids (parasitized eggs) for 50 generations across the landscape depicted in figure 1. Numbered lines in black refer to host eggs in host–plant patches 2–6, while grey lines in the same style are juvenile parasitoids. The model was initialized by adding a small number of adult hosts and parasitoids to the patches. Host and parasitoid are then assumed to move and interact for a period of time, generating a distribution of host eggs and juvenile parasitoids in space. This distribution is then used to initialize the adult host and parasitoid distribution in the next generation, after adjusting for mortality in these stages. (a) Patch–mudflat landscape with diffusion rate $D_{\text{patch}}=0.12 \text{ m}^2 \text{ d}^{-1}$, $D_{\text{mudflat}}=5.8 \text{ m}^2 \text{ d}^{-1}$ and $k_1=0.95$; (b) patch–brome landscape with $D_{\text{patch}}=D_{\text{brome}}=0.12 \text{ m}^2 \text{ d}^{-1}$ and $k_1=0.5$. Note that k_1 is much higher for the patch–mudflat landscape, implying that dispersing individuals are more likely to be retained in patches surrounded by mudflat versus brome.

variable, ranging from classic metapopulations, to mainland–island metapopulations, to patchy populations with stable or unstable local dynamics. These results support the view that a classic metapopulation is but one point along a continuum of possible spatial population structures (Harrison & Taylor 1997; Thomas & Kunin 1999).

Second, a prey and its predators often differ significantly in the scales at which they disperse or respond to spatial subdivision (e.g. Roland & Taylor 1997; Althoff & Thompson 1999; Cronin *et al.* 2000; Ryall & Fahrig 2005). This is particularly evident in the case of the Glanville fritillary and *H. horticola* whereby the dispersal discrepancy leads to very different population structures—a classic metapopulation for the host and a patchy population for the highly mobile parasitoid. Differences in dispersal between interacting species can be important to their regional population dynamics. In a number of prey–predator models, stability is achieved in instances where the prey is more dispersive than the predator, i.e. the host stays one step ahead of its natural enemy (e.g. Comins *et al.* 1992; McCauley *et al.* 1996; Holt 1997;

Table 1. Field studies on hosts and parasitoid spatial population structure.

(For inclusion in the table, host–plant patches must be discrete, and information about the relative dispersal of the host and parasitoid(s) and local extinction–colonization dynamics must be provided.)

host and parasitoid(s)	dispersal range ^a	local extinction risk	parasitoid can cause local host extinction?	type of population dynamics	sources
fruitfly (<i>Uurophora cardui</i>) and <i>Eurytoma robusta</i>	H > P	unknown	yes	classic metapopulation	Eber & Brandl (1994, 1996, 1997), Eber (2001), Johannesen & Seitz (2003)
fruitfly (<i>Tephritis bardanae</i>) and <i>Habrocytus albipennis</i> and <i>Bracon minutator</i>	H > P	unknown	no	patchy population	Dempster <i>et al.</i> (1995a,b)
California red scale (<i>Aonidiella aurantii</i>) and <i>Aphytis melinus</i> and <i>Ecarsia perniciosi</i>	H < P	none	no	locally and regionally stable	Murdoch <i>et al.</i> (1996)
Glanville fritillary (<i>Melitaea cinxia</i>) and <i>Cotesia melitaeorum</i>	H > P	H < P	yes	classic metapopulation	Lei & Hanski (1997), van Nouhuys & Hanski (1999, 2002), van Nouhuys & Tay (2001)
cinnabar moth (<i>Tyria jacobaea</i>) and <i>Cotesia popularis</i>	H > P	unknown	no	host: classic metapopulation; parasitoid: unknown	van der Meijden & van der Veen–van Wijk (1997)
Glanville fritillary and <i>Hyposoter horticola</i>	H < P	host driven	no	host: classic metapopulation; parasitoid: patchy population	van Nouhuys & Hanski (2002), van Nouhuys & Ehrnsten (2004), Kankare <i>et al.</i> (2005)
aphid (<i>Metopeurum fuscoviride</i>) and <i>Lysiphlebus hirticornis</i>	H ≈ P	host driven	yes	classic metapopulation	Weisser (2000)
planthopper (<i>Prokelisia crocea</i>) and <i>Anagrus columbi</i>	H > P	H < P	no	mainland-island metapopulation	Cronin (2003a,b, 2004), Cronin & Haynes (2004)

^a Is host (H) dispersal range less than, greater than or approximately equal to the dispersal range of the parasitoid (P)? Information is based on mark–recapture or gene flow studies.

Hassell 2000). However, unequal dispersal rates are neither necessary nor sufficient for interaction persistence (Nee *et al.* 1997; Briggs & Hoopes 2004). Once again, it is clear that we need information on the ranges and rates of dispersal of interacting species if we wish to understand the mechanisms underlying their persistence.

Third, host extinctions are caused by their parasitoids in a number of instances (Lei & Hanski 1997; Weisser 2000; van Nouhuys & Tay 2001). For example, Weisser (2000) found that the aphidiid parasitoid *Lysiphlebus hirticornis* caused 100% parasitism of 12% of the local aphid populations residing in clonal patches of common tansy. These results are significant because they suggest that the host–parasitoid interaction within a patch is inherently unstable—an important feature of predator–prey metapopulation theory (Harrison & Taylor 1997; Weisser 2000). Predator- or parasite-induced extinctions of local prey populations are more difficult to document, but they do exist (e.g. Walde 1994; Antonovics 2004; Cronin *et al.* 2004).

Fourth, for those systems in which extinction probabilities have been quantified, the parasitoid is more extinction prone than its host (van Nouhuys & Tay 2001; van Nouhuys & Hanski 2002; Cronin 2004). These studies support the theoretical expectation that higher trophic levels are at greater risk of extinction than lower

trophic levels (Pimm & Lawton 1977; Pimm 1991; Holt 1996). For *P. crocea* and *A. columbi*, the most likely explanation for this result was that the parasitoid's extinction risk was dependent on three trophic levels (densities of plants, hosts and conspecifics), whereas the host's extinction risk was dependent only on aspects of the landscape (patch size and matrix composition) (Cronin 2004). Also, *A. columbi* experienced a more fragmented landscape than its host because on average only 77% of the host–plant patches were occupied at a given time (Cronin 2004). Several studies have shown that predators, parasitoids and parasites are more sensitive to habitat fragmentation than their hosts (e.g. Kruess & Tscharntke 1994, 2000; Komonen *et al.* 2000; Thies *et al.* 2003; Antonovics 2004).

The chasm between theoretical and empirical research on fragmented populations of interacting species is at its widest with regard to the establishment of a causal link between habitat connectivity, fragmentation and population dynamics (e.g. Donahue *et al.* 2003; Bowne & Bowers 2004; Cronin & Haynes 2004). Laboratory microcosm experiments with consumer–resource systems have generally supported theoretical predictions (e.g. Huffaker 1958; Pimentel *et al.* 1963; Holyoak & Lawler 1996a,b, Ellner *et al.* 2001; Bonsall *et al.* 2002; Donahue *et al.* 2003; Bonsall & Hastings 2004). In contrast, most

field studies report on surveys of the distribution of organisms over space and time, and hence cannot ascribe cause and effect relationships with much confidence. Experimental manipulations of patch structure, fragmentation, habitat loss, connectivity and its resulting effect on local or regional dynamics of a prey and its predators are also quite scarce (but see [Kruess & Tscharntke 1994, 2000](#); [Braschler *et al.* 2003](#); [Cronin & Haynes 2004](#)). No study has examined the impact of fragmentation *per se* (the breaking up of suitable habitat, independent of habitat loss; [Fahrig 2003](#)) on parasitoid abundance or parasitism rates. In the study by [Cronin & Haynes \(2004\)](#), in which replicate patch networks were created that differed in degree of functional connectivity, increased connectivity resulted in increased local and regional extinctions of the planthopper and its parasitoid. In this particular case, high connectivity caused patches to function like sieves (see [Thomas & Kunin 1999](#)), losing individuals faster than they could be gained and essentially countering the rescue effect ([Brown & Kodric-Brown 1977](#); [Hanski 1999](#)). These unanticipated results were only revealed through experimentation.

(b) *Landscape-level studies*

Unlike the dichotomous view of landscapes inherent in classic metapopulation theory (i.e. discrete habitat patches of identical quality embedded in a uniformly inhospitable matrix), real landscapes are composed of patches that may have indistinct boundaries, their geometry and occurrence may be transient and the matrix may be quite heterogeneous ([Wiens 1997](#); [With 2004](#)). Moreover, patch quality can vary with respect to edaphic and topographic conditions ([Dias 1996](#); [Haynes & Cronin 2004](#); [With 2004](#)). The consideration of these aspects of the landscape and their effect on ecological processes encapsulates the burgeoning field of landscape ecology ([Turner 1989](#)). Theoretical and empirical landscape studies focus on how the spatial arrangement and composition of landscape elements (i.e. landscape context) influence within-patch dynamics, boundary or edge responses, spillover among adjacent elements, functional connectivity and distribution of organisms ([Tscharntke 2000](#); [Tscharntke & Brandl 2004](#); [With 2004](#)). As we outline below, landscape ecology and biological pest management have become intertwined fields of study ([Roland 2000](#); [Tscharntke 2000](#); [Thies *et al.* 2005](#)).

Incorporation of the mosaic structure of real landscapes into metapopulation models has been viewed as a main promise of landscape ecology ([Wiens 1997](#)). One difficulty from a modelling perspective is that patch-based connectivity measures, such as nearest neighbour distance ([Moilanen & Hanski 2001](#)), may be incorrect for real landscapes. Connectivity is therefore often assessed in a functional way (i.e. dependent upon the movement behaviour of the species in question) with individual-based simulation models. The models must include individual behaviour at habitat boundaries and movement patterns through the different landscape elements (e.g. [With & Crist 1995](#); [Ovaskainen & Hanski 2004](#); [Revilla *et al.* 2004](#)). As we have mentioned previously, however, there is a dearth of spatially realistic predator–prey models that also incorporate realistic dispersal behaviour of animals within and between landscape elements.

The idea that the composition of the matrix affects animal movement and connectivity among patches has been well established (e.g. [Crist *et al.* 1992](#); [Ricketts 2001](#); [Revilla *et al.* 2004](#)), but very few studies on this subject have been conducted with parasitoids, predators or parasites (but see [Morrison 1996](#); [Elliott *et al.* 2002](#); [Cronin 2003a](#), [Cronin & Haynes 2004](#); [Grez *et al.* 2005](#)). In the study by [Cronin & Haynes \(2004\)](#), both *P. crocea* and *A. columbi* had higher emigration rates, moved longer distances and had higher colonization rates when dispersing through a grass as compared to a bare-ground matrix. By affecting functional connectivity, the matrix influenced the mean and variance in densities and extinction risk of local host and parasitoid populations. Also, aside from patterns of the distribution of predation/parasitism or natural enemies across ecotones or boundaries (e.g. [Tscharntke *et al.* 2002](#); [Cronin 2003a](#), [Ries & Fagan 2003](#)), we have very little data on how patch boundaries affect enemy and prey movement behaviour (but see [Cronin 2003a](#) for a rare parasitoid example).

Many of our advances in the arena of predator–prey landscape ecology have derived from studies of agricultural pests and their parasitoids ([Roland 2000](#); [Tscharntke 2000](#); [Thies *et al.* 2005](#)). We will emphasize two areas of study, spillover effects between adjacent landscape elements (i.e. spatial subsidies; [Polis *et al.* 1997](#)) and landscape context effects on host–parasitoid interactions. Spillover effects between adjacent landscape elements should be common when natural enemies and their prey are not restricted to a single habitat type and use different landscape elements for feeding, oviposition or hibernation ([Landis *et al.* 2000](#); [Gurr *et al.* 2003](#)). The strength of pest–enemy interactions may depend on the juxtaposition of these different elements ([Tscharntke & Brandl 2004](#)). For example, spillover from non-crop habitat often results in higher parasitism rates near the crop edge than interior (e.g. [Baggen & Gurr 1998](#); [Thies & Tscharntke 1999](#); [Tylianakis *et al.* 2004](#)). The reverse has also been shown—spillover from crop to non-crop habitat can magnify the impact of parasitoids on non-crop insects resident in adjacent natural habitats ([Barratt *et al.* 1997](#)). Whether the adjacent matrix functions as a source (net exporter) or sink (net importer) for natural enemies probably depends on the nature of the matrix (i.e. its composition, size and age). Consequently, effective top-down control of plant pests may be contingent upon the composition of adjacent matrix habitats ([Landis *et al.* 2000](#); [Gurr *et al.* 2003](#); [Snyder *et al.* in press](#)). Although various pest management programs actively modify adjacent non-crop habitat to facilitate natural enemy production and spillover onto agricultural crops, we generally know too little about spillover effects to make predictions or management recommendations for many crop systems ([Landis *et al.* 2000](#)).

Studies of landscape-context effects on predator–prey interactions also come primarily from parasitoids and hosts in agroecosystems (but see [Aviron *et al.* 2005](#); [Schmidt & Tscharntke 2005](#)). The typical study involves a collection of suitable host–plant patches (e.g. a crop field) surrounded by a mixture of crop and non-crop habitat ([table 2](#)). The landscape context ranges from the simple (high percentage of crop habitat in the surrounding area) to the complex (a high percentage of non-crop habitat). What was once a laborious task to classify vegetation

Table 2. Effect of landscape context on host–parasitoid interactions.

study system	landscape context	statistics	significant results	source
armyworm (<i>Pseudaletia unipuncta</i>) and parasitoids in maize	simple (cropland) versus complex (cropland surrounded by hedgerows and woodlots) landscapes	richness, parasitism	parasitism higher in complex landscapes	Marino & Landis (1996)
armyworms and parasitoids in maize	simple (cropland) versus complex (cropland intermixed with non-crop) landscapes	richness, parasitism	inconsistent among sites and years	Menalled <i>et al.</i> (1999, 2003)
rape pollen beetle (<i>Meligethes aenus</i>) and parasitoids in oilseed rape	presence/absence of old-field margin strips adjacent to oilseed rape fields	crop damage, parasitism	crop damage lowest and percentage parasitism highest for crop fields near margin strips	Thies & Tschardt (1999)
agromyzid (<i>Melanagromyza aeneoventris</i>) and parasitoids in creeping thistle	percentage of non-crop area	host abundance, parasitism	host abundance, but not percentage parasitism, increase with increasing percentage non-crop area	Kruess (2003)
trap-nesting bees and wasps and their parasitoids in orchards	matrix diversity; percentage of semi-natural habitat (orchards/meadows)	richness, parasitism	parasitoid richness increase with matrix diversity	Steffan-Dewenter (2003)
rape pollen beetle and parasitoids in oilseed rape	structural complexity (proportion of non-crop habitat)	crop damage, parasitism	plant damage decrease and parasitism increase with increasing complexity	Thies <i>et al.</i> (2003)
noctuid moth (<i>Pseudaletia unipuncta</i>) and parasitoids in maize	simple (cropland) versus complex (cropland intermixed with non-crop) landscapes	richness, diversity, parasitism	trend toward increasing richness in simple landscapes	Costamagna <i>et al.</i> (2004)
tansy leaf beetle (<i>Galeruca tanacetii</i>) and egg parasitoid (<i>Oomyzus galerucivorus</i>) in grasslands	percentage of area covered by non-host shrubs and percentage of area covered by suitable habitat	host incidence, parasitism	incidence and parasitism decrease with increasing coverage by shrubs and increase with coverage of suitable habitat	Meiners & Obermaier (2004), E. Obermaier, A. Heißwolf, H. J. Poethke, B. Randkofer and T. Meiners (unpublished data)
cereal aphids and parasitoids in winter wheat fields	structural complexity of landscape (percentage of arable land)	host abundance, parasitism	host density and parasitism increase with structural complexity	Roschewitz <i>et al.</i> (2005), Thies <i>et al.</i> (2005)

structure over wide geographical regions has become quite simple thanks to the availability of medium-to-high resolution thermal and multispectral satellite imagery (Lillesand *et al.* 2003). Satellite images with a resolution of less than 5 m are globally available and can be used to identify the location of dominant vegetation types and even individual plant species (e.g. Mehner *et al.* 2004; Rocchini *et al.* 2004; Casady *et al.* 2005).

In most studies with parasitoids of agricultural pests, parasitoid species richness and/or parasitism in the crop habitat increased with increasing landscape complexity (but see Menalled *et al.* 1999; Kruess 2003; Meiners & Obermaier 2004; table 2). For example, Thies *et al.* (2003) found that parasitism of the rape pollen beetle (*Meligethes aenus*) generally increased with the proportion of non-crop area within 6 km of the focal plants. In six out of eight studies, landscape context contributed significantly to variation in parasitoid richness or percentage parasitism. There is also evidence from these studies that herbivore and parasitoid responses to landscape context change with scale and differ from one another (e.g. Kruess 2003; Thies *et al.* 2003, 2005). In the study by

E. Obermaier, A. Heißwolf, H. J. Poethke, B. Randkofer and T. Meiners (unpublished data), tansy leaf beetle (*Galeruca tanacetii*) oviposition was positively correlated with the percentage of suitable habitat within 200 m, whereas parasitism by *Oomyzus galerucivorus* was only positively correlated with the percentage of suitable habitat within 500 m. These scale-dependent differences between hosts and their parasitoids probably link back to their differences in dispersal ability (Thies *et al.* 2005). The above studies suggest that the biological control of plant pests is influenced by landscape-scale processes and that pest management programs may benefit considerably from thinking beyond the boundaries of a single agricultural field.

3. DISCUSSION AND FUTURE DIRECTIONS

Insect parasitoids have distinct advantages for the study of predator–prey interactions in space because their foraging success and impact on prey are manifest in the parasitism of hosts. Capitalizing on this advantage, ecologists have amassed considerable information on the spatial

distribution of predator-induced prey mortality, and provided strong evidence that predators cause local prey extinctions and that prey suppression is impacted by factors that span local, regional and landscape scales. Moreover, it is probably the norm, rather than the exception, that each prey species and its associated enemies disperse, aggregate and respond to landscape structure at different spatial scales. On its own, this implies that predator–prey interactions must be considered across a broad range of spatial scales (see also Dunning *et al.* 1992; Polis *et al.* 1997; Tscharrntke & Brandl 2004). These data have greatly expanded our understanding of predator–prey spatial ecology and are beginning to affect how agricultural pest management programs are developed (Landis *et al.* 2000; Tscharrntke 2000; Tscharrntke & Brandl 2004).

Although we have made significant strides in our understanding of predator–prey spatial ecology, this remains an open and fertile area for research. First, movement studies with parasitoids, predators and parasites need to be conducted in the context of the landscape. In addition to quantifying predator and prey migration rates, there is a critical need for data on movement behaviour at the boundary of suitable patches and other landscape elements and trajectories within different matrix types. This information is essential to understanding the functional connectivity among suitable patches (Ims & Yoccoz 1997; Cronin & Haynes 2004).

Second, we lack experimental studies at the metapopulation or landscape level that address questions regarding the temporal population dynamics of interacting species like hosts and their parasitoids. For example, no studies have examined the effects of habitat fragmentation *per se* on host–parasitoid interaction persistence at local and regional scales (see Fahrig 2003). Cronin & Haynes (2004, unpublished data) is the only study to our knowledge that created replicate landscapes in the field with the intention of determining the contribution of matrix composition to interaction persistence. In this case, ensembles of host–plant patches embedded in a grass matrix were much more extinction prone, both locally and regionally, than identical arrangements of patches in a bare-ground matrix. Experimental studies such as these are essential if we are to fathom the underlying mechanisms influencing predator–prey population dynamics. Although studies such as this are logistically impractical for widely dispersing species, quasi-experimental studies in agroecosystems remain viable options.

Third, modelling efforts with regard to predator–prey interactions mostly deal in the abstract—little attention is paid to the actual details of movement, the landscape is typically structured as a lattice, and the matrix is neutral in its effects on movement. Clearly, empirical research does not support these modelling simplifications. If the goal is to make qualitative or short-term predictions for threatened or endangered species in which we have limited data, then these simplified models may be our best and only option (Hanski 2002). However, as our own data suggest (Cronin & Haynes 2004), regional persistence may be strongly landscape-context dependent. In lieu of these abstractions, we advocate a more mechanistic, but generalizable modelling approach that includes landscape realism. A significant advantage of this modelling approach is that theoretical landscapes can be made to

resemble natural landscapes and hypotheses can be tested for real scenarios.

Finally, research in these previous three areas can pay substantial dividends when applied to agricultural systems, particularly with regard to conservation biological control (Snyder *et al.* in press). More studies are needed that address the mechanisms underlying whether, and under what circumstances, adjacent matrix habitat functions as a source or sink for natural enemies. Also, we have barely scratched the surface in exploring how pest and enemy abundance, diversity and interactions are influenced by landscape context across multiple spatial scales, yet the limited evidence to date suggests that parasitism and predation within a field can be strongly related to habitat complexity at scales extending well beyond the crop margins (e.g. Kruess 2003; Thies *et al.* 2003, 2005). The predictive ability of pest–enemy models and the success of management strategies can only be improved by exploring pest–enemy interactions at the landscape level.

The future of research on predator–prey spatial ecology is very bright. Spurred on by recent empirical data, worldwide availability of high-resolution satellite imagery, computational power of desktop computers and emerging spatially realistic landscape models, we foresee a continued growth of research in this area. We also anticipate that research with host–parasitoid systems will lead the way.

Support was provided by National Science Foundation grant DEB-0211359 to J.T.C. and a cooperative agreement with the Southern Research Station, USDA Forest Service to J.D.R.

REFERENCES

- Althoff, D. M. & Thompson, J. N. 1999 Comparative geographic structures of two parasitoid–host interactions. *Evolution* **53**, 818–825.
- Antonovics, J. 2004 Long-term study of a plant–pathogen metapopulation. In *Ecology, genetics, and evolution of metapopulations* (ed. I. Hanski & O. E. Gaggiotti), pp. 471–488. Boston, MA: Elsevier Academic Press.
- Aune, K., Jonsson, B. G. & Moen, J. 2005 Isolation and edge effects among woodland key habitats in Sweden: is forest policy promoting fragmentation? *Biol. Conserv.* **124**, 89–95. (doi:10.1016/j.biocon.2005.01.015.)
- Aviron, S., Burel, F., Baudry, J. & Schermann, N. 2005 Carabid assemblages in agricultural landscapes: impacts of habitat features, landscape context at different spatial scales and farming intensity. *Agric. Ecosyst. Environ.* **108**, 205–217. (doi:10.1016/j.agee.2005.02.004.)
- Baggen, L. R. & Gurr, G. M. 1998 The influence of food on *Copidosoma koehleri* (Hymenoptera: Encyrtidae), and the use of flowering plants as a habitat management tool to enhance biological control of potato moth, *Phthorimaea operculella* (Lepidoptera: Gelechiidae). *Biol. Control* **11**, 9–17. (doi:10.1006/bcon.1997.0566.)
- Bailey, V. A., Nicholson, A. J. & Williams, E. J. 1962 Interaction between hosts and parasites when some host individuals are more difficult to find than others. *J. Theor. Biol.* **3**, 1–18.
- Barratt, B. I. P., Evans, A. A., Ferguson, C. M., Barker, G. M. & McNeill, M. R. 1997 Laboratory nontarget host range of the introduced parasitoids *Microctonus aethiopoies* and *M. hyperodae* (Hymenoptera, Braconidae) compared with field parasitism in New Zealand. *Environ. Entomol.* **26**, 694–702.

- Bascompte, J. & Rodriguez, M. A. 2001 Habitat patchiness and plant species richness. *Ecol. Lett.* **4**, 417–420. (doi:10.1046/j.1461-0248.2001.00242.x.)
- Berendonk, T. U. & Bonsall, M. B. 2002 The phantom midge and a comparison of metapopulation structures. *Ecology* **83**, 116–128.
- Bonsall, M. B. & Hastings, A. 2004 Demographic and environmental stochasticity in predator–prey metapopulation dynamics. *J. Anim. Ecol.* **73**, 1043–1055. (doi:10.1111/j.0021-8790.2004.00874.x.)
- Bonsall, M. B., French, D. R. & Hassell, M. P. 2002 Metapopulation structures affect persistence of predator–prey interactions. *J. Anim. Ecol.* **71**, 1075–1084. (doi:10.1046/j.1365-2656.2002.00670.x.)
- Bowne, D. R. & Bowers, M. A. 2004 Interpatch movements in spatially structured populations: a literature review. *Landscape Ecol.* **19**, 1–20. (doi:10.1023/B:LAND.0000018357.45262.b9.)
- Braschler, B., Lampel, G. & Baur, B. 2003 Experimental small-scale grassland fragmentation alters aphid population dynamics. *Oikos* **100**, 581–591. (doi:10.1034/j.1600-0706.2003.12220.x.)
- Briggs, C. J. & Hoopes, M. F. 2004 Stabilizing effects in spatial parasitoid–host and predator–prey models: a review. *Theor. Popul. Biol.* **65**, 299–315. (doi:10.1016/j.tpb.2003.11.001.)
- Brown, J. H. & Kodric-Brown, A. 1977 Turnover rates in insular biogeography: effects of immigration on extinction. *Ecology* **58**, 445–449.
- Cantrell, R. S. & Cosner, C. 2003 *Spatial ecology via reaction–diffusion equations*. West Sussex: Wiley.
- Casady, G. M., Hanley, R. S. & Seelan, S. K. 2005 Detection of leafy spurge (*Euphorbia esula*) using multi-date high-resolution satellite imagery. *Weed Technol.* **19**, 462–467.
- Childs, D. Z., Bonsall, M. B. & Rees, M. 2004 Periodic local disturbance in host–parasitoid metapopulations: host suppression and parasitoid persistence. *J. Theor. Biol.* **227**, 13–23. (doi:10.1016/S0022-5193(03)00293-5.)
- Comins, H. N., Hassell, M. P. & May, R. M. 1992 The spatial dynamics of host–parasitoid systems. *J. Anim. Ecol.* **61**, 735–748.
- Costamagna, A. C., Menalled, F. D. & Landis, D. A. 2004 Host density influences parasitism of the armyworm *Pseudaletia unipuncta* in agricultural landscapes. *Basic Appl. Ecol.* **5**, 347–355. (doi:10.1016/j.baae.2004.04.009.)
- Crist, T. O., Guertin, D. S., Wiens, J. A. & Milne, B. T. 1992 Animal movement in heterogeneous landscapes: an experiment with *Eleodes* beetles in shortgrass prairie. *Funct. Ecol.* **6**, 536–544.
- Cronin, J. T. 2003a Matrix heterogeneity and host–parasitoid interactions in space. *Ecology* **84**, 1506–1516.
- Cronin, J. T. 2003b Movement and spatial population structure of a prairie planthopper. *Ecology* **84**, 1179–1188.
- Cronin, J. T. 2004 Host–parasitoid extinction and recolonization in a fragmented prairie landscape. *Oecologia* **139**, 503–514. (doi:10.1007/s00442-004-1549-8.)
- Cronin, J. T. & Haynes, K. J. 2004 An invasive plant promotes unstable host–parasitoid patch dynamics. *Ecology* **85**, 2772–2782.
- Cronin, J. T., Reeve, J. D., Wilkens, R. & Turchin, P. 2000 The pattern and range of movement of a checkered beetle predator relative to its bark beetle prey. *Oikos* **90**, 127–138. (doi:10.1034/j.1600-0706.2000.900113.x.)
- Cronin, J. T., Haynes, K. J. & Dillemoth, F. 2004 Spider effects on planthopper mortality, dispersal and spatial population dynamics. *Ecology* **85**, 2134–2143.
- Debinski, D. M. & Holt, R. D. 2000 A survey and overview of habitat fragmentation experiments. *Conserv. Biol.* **14**, 342–355. (doi:10.1046/j.1523-1739.2000.98081.x.)
- Dempster, J. P., Atkinson, D. A. & Cheesman, O. D. 1995a The spatial population dynamics of insects exploiting a patchy food resource. I. Population extinctions and regulation. *Oecologia* **104**, 340–353. (doi:10.1007/BF00328370.)
- Dempster, J. P., Atkinson, D. A. & French, M. C. 1995b The spatial population dynamics of insects exploiting a patchy food resource. II. Movements between patches. *Oecologia* **104**, 354–362. (doi:10.1007/BF00328371.)
- Dias, P. C. 1996 Sources and sinks in population biology. *Trends Ecol. Evol.* **11**, 326–330. (doi:10.1016/0169-5347(96)10037-9.)
- Donahue, M. J., Holyoak, M. & Feng, C. 2003 Patterns of dispersal and dynamics among habitat patches varying in quality. *Am. Nat.* **162**, 302–317. (doi:10.1086/377185.)
- Dunning, J. B., Danielson, B. J. & Pulliam, H. R. 1992 Ecological processes that affect populations in complex landscapes. *Oikos* **65**, 169–175.
- Eber, S. 2001 Multitrophic interactions: the population dynamics of spatially structured plant–herbivore–parasitoid systems. *Basic Appl. Ecol.* **2**, 27–33. (doi:10.1078/1439-1791-00033.)
- Eber, S. & Brandl, R. 1994 Ecological and genetic spatial patterns of *Urophora cardui* (Diptera, Tephritidae) as evidence for population structure and biogeographical processes. *J. Anim. Ecol.* **63**, 187–199.
- Eber, S. & Brandl, R. 1996 Metapopulation dynamics of the tephritid fly *Urophora cardui*: an evaluation of incidence–function model assumptions with field data. *J. Anim. Ecol.* **65**, 621–630.
- Eber, S. & Brandl, R. 1997 Genetic differentiation of the tephritid fly *Urophora cardui* in Europe as evidence for its biogeographical history. *Mol. Ecol.* **6**, 651–660. (doi:10.1046/j.1365-294X.1997.00236.x.)
- Elliott, N. C., Kieckhefer, R. W., Michels, G. J. & Giles, K. L. 2002 Predator abundance in alfalfa fields in relation to aphids, within-field vegetation, and landscape matrix. *Environ. Entomol.* **31**, 253–260.
- Ellner, S. P. *et al.* 2001 Habitat structure and population persistence in an experimental community. *Nature* **412**, 538–543. (doi:10.1038/35087580.)
- Fahrig, L. 2003 Effects of habitat fragmentation on biodiversity. *Annu. Rev. Entomol.* **34**, 487–515.
- Gering, J. C., Crist, T. O. & Veech, J. A. 2003 Additive partitioning of species diversity across multiple spatial scales: implications for regional conservation of biodiversity. *Conserv. Biol.* **17**, 488–499. (doi:10.1046/j.1523-1739.2003.01465.x.)
- Godfray, H. C. J. 1994 *Parasitoids: behavioral and evolutionary ecology*. Princeton, NJ: Princeton University Press.
- Greze, A. A., Zaviezo, T. & Rios, M. 2005 Ladybird (Coleoptera: Coccinellidae) dispersal in experimental fragmented alfalfa landscapes. *Eur. J. Entomol.* **102**, 209–216.
- Gurr, G. M., Wratten, S. D. & Luna, J. M. 2003 Multi-function agricultural biodiversity: pest management and other benefits. *Basic Appl. Ecol.* **4**, 107–116. (doi:10.1078/1439-1791-00122.)
- Gyllenberg, M., Hanski, I. & Hastings, A. 1997 Structured metapopulation models. In *Metapopulation biology* (ed. I. Hanski & M. E. Gilpin), pp. 93–122. San Diego, CA: Academic Press.
- Hanski, I. 1986 Population dynamics of shrews on small islands accord with the equilibrium theory. *Biol. J. Linn. Soc.* **28**, 23–36.
- Hanski, I. 1994 A practical model of metapopulation dynamics. *J. Anim. Ecol.* **63**, 151–162.

- Hanski, I. 1997 Metapopulation dynamics—from concepts and observations to predictive models. In *Metapopulation biology* (ed. I. Hanski & M. E. Gilpin), pp. 69–91. San Diego: Academic Press.
- Hanski, I. 1999 *Metapopulation ecology*. New York: Oxford University Press.
- Hanski, I. 2002 Metapopulations of animals in highly fragmented landscapes and population viability analysis. In *Population viability analysis* (ed. S. R. Beissinger & D. R. McCullough), pp. 86–108. Chicago, IL: University of Chicago Press.
- Hanski, I. & Ovaskainen, O. 2000 The metapopulation capacity of a fragmented landscape. *Nature* **404**, 755–758. (doi:10.1038/35008063.)
- Hanski, I., Foley, P. & Hassell, M. 1996a Random walks in a metapopulation—how much density dependence is necessary for long-term persistence? *J. Anim. Ecol.* **65**, 274–282.
- Hanski, I., Moilanen, A. & Gyllenberg, M. 1996b Minimum viable metapopulation size. *Am. Nat.* **147**, 527–541. (doi:10.1086/285864.)
- Harrison, S. 1991 Local extinction in a metapopulation context: an empirical evaluation. *Biol. J. Linn. Soc.* **42**, 73–88.
- Harrison, S. & Taylor, A. D. 1997 Empirical evidence for metapopulation dynamics. In *Metapopulation biology* (ed. I. Hanski & M. E. Gilpin), pp. 27–42. San Diego, CA: Academic Press.
- Hassell, M. P. 2000 *The spatial and temporal dynamics of host–parasitoid interactions*. New York: Oxford University Press.
- Hassell, M. P. & May, R. M. 1974 Aggregation of predators and insect parasites and its effect on stability. *J. Anim. Ecol.* **43**, 567–594.
- Hassell, M. P., Comins, H. N. & May, R. M. 1991 Spatial structure and chaos in insect populations. *Nature* **353**, 255–258. (doi:10.1038/353255a0.)
- Hawkins, B. A. 1994 *Patterns and process in host–parasitoid interactions*. London: Cambridge University Press.
- Haynes, K. J. 2004. Herbivore movement and spatial population dynamics in a heterogeneous landscape. Ph.D. thesis, Louisiana State University, Louisiana.
- Haynes, K. J. & Cronin, J. T. 2004 Confounding of patch quality and matrix effects in herbivore movement studies. *Landscape Ecol.* **19**, 119–124.
- Heino, M., Kaitala, V., Ranta, E. & Lindstrom, J. 1997 Synchronous dynamics and rates of extinction in spatially structured populations. *Proc. R. Soc. B* **264**, 481–486. (doi:10.1098/rspb.1997.0069.)
- Holt, R. D. 1996 Food webs in space: an island biogeographic perspective. In *Food webs—integration of patterns and dynamics* (ed. G. A. Polis & K. O. Winemiller), pp. 313–323. New York: Chapman & Hall.
- Holt, R. D. 1997 From metapopulation dynamics to community structure—some consequences of spatial heterogeneity. In *Metapopulation biology* (ed. I. Hanski & M. E. Gilpin), pp. 149–164. San Diego, CA: Academic Press.
- Holyoak, M. & Lawler, S. P. 1996a Persistence of an extinction-prone predator–prey interaction through metapopulation dynamics. *Ecology* **77**, 1867–1879.
- Holyoak, M. & Lawler, S. P. 1996b The role of dispersal in predator–prey metapopulation dynamics. *J. Anim. Ecol.* **65**, 640–652.
- Huffaker, C. B. 1958 Experimental studies on predation: dispersion factors and predator–prey oscillations. *Hilgardia* **27**, 343–383.
- Ims, R. A. & Yacoz, N. G. 1997 Studying transfer processes in metapopulations: emigration, migration, and colonization. In *Metapopulation biology* (ed. I. Hanski & M. E. Gilpin), pp. 247–265. San Diego, CA: Academic Press.
- Johannessen, J. & Seitz, A. 2003 Comparative population genetic structures of the fruit fly *Urophora cardui* and its primary parasitoid *Eurytoma robusta*. *Entomol. Exp. Appl.* **108**, 149–157. (doi:10.1046/j.1570-7458.2003.00077.x.)
- Kankare, M., van Nouhuys, S., Gaggiotti, O. & Hanski, I. 2005 Metapopulation genetic structure of two coexisting parasitoids of the Glanville fritillary butterfly. *Oecologia* **143**, 77–84. (doi:10.1007/s00442-004-1782-1.)
- Kareiva, P. 1987 Habitat fragmentation and the stability of predator–prey interactions. *Nature* **326**, 388–390. (doi:10.1038/326388a0.)
- Keeling, M. J., Bjørnstad, O. N. & Grenfell, B. T. 2004 Metapopulation dynamics of infectious diseases. In *Ecology, genetics, and evolution of metapopulations* (ed. I. Hanski & O. E. Gaggiotti), pp. 415–445. Elsevier Academic Press: Boston.
- Komonen, A., Penttila, R., Lindgren, M. & Hanski, I. 2000 Forest fragmentation truncates a food chain based on an old-growth forest bracket fungus. *Oikos* **90**, 119–126. (doi:10.1034/j.1600-0706.2000.900112.x.)
- Kruess, A. 2003 Effects of landscape structure and habitat type on a plant–herbivore–parasitoid community. *Ecography* **26**, 283–290. (doi:10.1034/j.1600-0587.2003.03402.x.)
- Kruess, A. & Tscharntke, T. 1994 Habitat fragmentation, species loss, and biological control. *Science* **264**, 1581–1584.
- Kruess, A. & Tscharntke, T. 2000 Species richness and parasitism in a fragmented landscape: experiments and field studies with insects on *Vicia sepium*. *Oecologia* **122**, 129–137.
- Landis, D. A., Wratten, S. D. & Gurr, G. M. 2000 Habitat management to conserve natural enemies of arthropod pests in agriculture. *Annu. Rev. Entomol.* **45**, 175–201. (doi:10.1146/annurev.ento.45.1.175.)
- Lei, G. C. & Hanski, I. 1997 Metapopulation structure of *Cotesia melitaeorum*, a specialist parasitoid of the butterfly *Melitaea cinxia*. *Oikos* **78**, 91–100.
- Levins, R. 1970 Extinction. In *Some mathematical problems in biology* (ed. M. Gerstenhaber), pp. 75–107. Providence, Rhode Island, USA: American Mathematical Society.
- Lillesand, T. M., Kiefer, R. W. & Chipman, J. W. 2003 *Remote sensing and image interpretation* 5th edn. New York: Wiley.
- Marino, P. C. & Landis, D. A. 1996 Effect of landscape structure on parasitoid diversity and parasitism in agroecosystems. *Ecol. Appl.* **6**, 276–284.
- May, R. M. 1978 Host–parasitoid systems in patchy environments: a phenomenological model. *J. Anim. Ecol.* **47**, 833–843.
- McCauley, E., Wilson, W. G. & de Roos, A. M. 1996 Dynamics of age-structured predator–prey populations in space: asymmetrical effects of mobility in juvenile and adult predators. *Oikos* **76**, 485–497.
- Mehner, H., Cutler, M., Fairbairn, D. & Thompson, G. 2004 Remote sensing of upland vegetation: the potential of high spatial resolution satellite sensors. *Global Ecol. Biogeogr.* **13**, 359–369. (doi:10.1111/j.1466-822X.2004.00096.x.)
- Meiners, T. & Obermaier, E. 2004 Hide and seek on two spatial scales—vegetation structure effects herbivore oviposition and egg parasitism. *Basic Appl. Ecol.* **5**, 87–94. (doi:10.1078/1439-1791-00182.)
- Menalled, F. D., Marino, P. C., Gage, S. H. & Landis, D. A. 1999 Does agricultural landscape structure affect parasitism and parasitoid diversity? *Ecol. Appl.* **9**, 634–641.

- Menalled, F. D., Costamagna, A. C., Marino, P. C. & Landis, D. A. 2003 Temporal variation in the response of parasitoids to agricultural landscape structure. *Agric. Ecosyst. Environ.* **96**, 29–35.
- Moilanen, A. & Hanski, I. 2001 On the use of connectivity measures in spatial ecology. *Oikos* **95**, 147–151. (doi:10.1034/j.1600-0706.2001.950116.x.)
- Morrison, J. A. 1996 Infection of *Juncus dichotomus* by the smut fungus *Cintractia junci*: an experimental field test of the effects of neighbouring plants, environment, and host plant genotype. *J. Ecol.* **84**, 691–702.
- Murdoch, W. W., Swarbrick, S. L., Luck, R. F., Walde, S. & Yu, D. S. 1996 Refuge dynamics and metapopulation dynamics: an experimental test. *Am. Nat.* **147**, 424–444. (doi:10.1086/285859.)
- Murphy, D. D., Freas, K. E. & Weiss, S. B. 1990 An environment–metapopulation approach to population viability analysis for a threatened invertebrate. *Conserv. Biol.* **4**, 41–51. (doi:10.1111/j.1523-1739.1990.tb00266.x.)
- Nee, S., May, R. M. & Hassell, M. P. 1997 Two-species metapopulation models. In *Metapopulation biology* (ed. I. Hanski & M. E. Gilpin), pp. 123–147. San Diego, CA: Academic Press.
- Okubo, A., Hastings, A. & Powell, T. 2001 Population dynamics in temporal and spatial domains. In *Diffusion and ecological problems: modern perspectives* (ed. A. Okubo & S. A. Levin), pp. 298–373. New York: Springer.
- Ovaskainen, O. 2002 The effective size of a metapopulation living in a heterogeneous patch network. *Am. Nat.* **160**, 612–628. (doi:10.1086/342818.)
- Ovaskainen, O. 2004 Habitat-specific movement parameters estimated using mark–recapture data and a diffusion model. *Ecology* **85**, 242–257.
- Ovaskainen, O. & Cornell, S. J. 2003 Biased movement at boundary and conditional occupancy times for diffusion processes. *J. Appl. Prob.* **40**, 557–580. (doi:10.1239/jap/1059060888.)
- Ovaskainen, O. & Hanski, I. 2003 Extinction threshold in metapopulation models. *Ann. Zool. Fenn.* **40**, 81–97.
- Ovaskainen, O. & Hanski, I. 2004 Metapopulation dynamics in highly fragmented landscapes. In *Ecology, genetics, and evolution of metapopulations* (ed. I. Hanski & O. E. Gaggiotti), pp. 73–104. Boston, MA: Elsevier Academic Press.
- Pimentel, D., Nagel, W. P. & Madden, J. L. 1963 Space–time structure of the environment and the survival of parasite–host systems. *Am. Nat.* **97**, 141–166. (doi:10.1086/282265.)
- Pimm, S. L. 1991 *The balance of nature*. Chicago, IL: University of Chicago Press.
- Pimm, S. L. & Lawton, J. H. 1977 Number of trophic levels in ecological communities. *Nature* **268**, 329–331. (doi:10.1038/268329a0.)
- Polis, G. A., Anderson, W. B. & Holt, R. D. 1997 Toward an integration of landscape and food web ecology: the dynamics of spatially subsidized food webs. *Annu. Rev. Ecol. Syst.* **28**, 289–316. (doi:10.1146/annurev.ecolsys.28.1.289.)
- Reeve, J. D. 1988 Environmental variability, migration, and persistence in host–parasitoid systems. *Am. Nat.* **132**, 810–836. (doi:10.1086/284891.)
- Reeve, J. D., Haynes, K. J. & Cronin, J. T. In preparation. Diffusion models for planthopper movement incorporating heterogeneity among substrates, individuals and edge behaviours.
- Revilla, E., Wiegand, T., Palomares, F., Ferreras, P. & Delibes, M. 2004 Effects of matrix heterogeneity on animal dispersal: from individual behavior to metapopulation-level parameters. *Am. Nat.* **164**, E130–E153. (doi:10.1086/424767.)
- Ricketts, T. H. 2001 The matrix matters: effective isolation in fragmented landscapes. *Am. Nat.* **158**, 87–99. (doi:10.1086/320863.)
- Ricklefs, R. E. & Schluter, D. (eds) 1993 *Species diversity in ecological communities: historical and geographical perspectives*. Chicago, IL: University of Chicago Press.
- Ries, L. & Fagan, W. F. 2003 Habitat edges as a potential ecological trap for an insect predator. *Ecol. Entomol.* **28**, 567–572. (doi:10.1046/j.1365-2311.2003.00550.x.)
- Rocchini, D., Chiarucci, A. & Loiselle, S. A. 2004 Testing the spectral variation hypothesis by using satellite multi-spectral images. *Acta Oecol.* **26**, 117–120. (doi:10.1016/j.actao.2004.03.008.)
- Roland, J. 2000 Landscape ecology of parasitism. In *Parasitoid population biology* (ed. M. E. Hochberg & A. R. Ives), pp. 83–99. Princeton, NJ: Princeton University Press.
- Roland, J. & Taylor, P. D. 1997 Insect parasitoid species respond to forest structure at different spatial scales. *Nature* **386**, 710–713. (doi:10.1038/386710a0.)
- Roschewitz, I., Hucker, M., Tschardtke, T. & Thies, C. 2005 The influence of landscape context and farming practices on parasitism of cereal aphids. *Agric. Ecosyst. Environ.* **108**, 218–227. (doi:10.1016/j.agee.2005.02.005.)
- Ryall, K. L. & Fahrig, L. 2005 Habitat loss decreases predator–prey ratios in a pine-bark beetle system. *Oikos* **110**, 265–270. (doi:10.1111/j.0030-1299.2005.13691.x.)
- Schmidt, M. H. & Tschardtke, T. 2005 Landscape context of sheetweb spider (Araneae: Linyphiidae) abundance in cereal fields. *J. Biogeogr.* **32**, 467–473. (doi:10.1111/j.1365-2699.2004.01244.x.)
- Snyder, W. E., Chang, G. C. & Prasad, R. P. In press. Biodiversity and successful conservation biological control: is there a relationship? In *Ecology of predator–prey interactions* (ed. P. Barbosa & I. Castellanos). London: Oxford University Press.
- Steffan-Dewenter, I. 2003 Importance of habitat area and landscape context for species richness of bees and wasps in fragmented orchard meadows. *Conserv. Biol.* **17**, 1036–1044. (doi:10.1046/j.1523-1739.2003.01575.x.)
- Steffan-Dewenter, I., Munzenberg, U., Burger, C., Thies, C. & Tschardtke, T. 2002 Scale-dependent effects of landscape context on three pollinator guilds. *Ecology* **83**, 1421–1432.
- Thies, C. & Tschardtke, T. 1999 Landscape structure and biological control in agroecosystems. *Science* **285**, 893–895. (doi:10.1126/science.285.5429.893.)
- Thies, C., Steffan-Dewenter, I. & Tschardtke, T. 2003 Effects of landscape context on herbivory and parasitism at different spatial scales. *Oikos* **101**, 18–25. (doi:10.1034/j.1600-0706.2003.12567.x.)
- Thies, C., Roschewitz, I. & Tschardtke, T. 2005 The landscape context of cereal aphid–parasitoid interactions. *Proc. R. Soc. B* **272**, 203–210. (doi:10.1098/rspb.2004.2902.)
- Thomas, C. D. & Kunin, W. E. 1999 The spatial structure of populations. *J. Anim. Ecol.* **68**, 647–657. (doi:10.1046/j.1365-2656.1999.00330.x.)
- Tschardtke, T. 2000 Parasitoid populations in agricultural landscapes. In *Parasitoid population biology* (ed. M. E. Hochberg & A. R. Ives), pp. 235–253. Princeton, NJ: Princeton University Press.
- Tschardtke, T. & Brandl, R. 2004 Plant–insect interactions in fragmented landscapes. *Annu. Rev. Entomol.* **49**, 405–430. (doi:10.1146/annurev.ento.49.061802.123339.)
- Tschardtke, T., Steffan-Dewenter, I., Kruess, A. & Thies, C. 2002 Contribution of small habitat fragments to conservation of insect communities of grassland–cropland landscapes. *Ecol. Appl.* **12**, 354–363.

- Turner, M. G. 1989 Landscape ecology: the effect of pattern on process. *Annu. Rev. Ecol. Syst.* **20**, 171–197. (doi:10.1146/annurev.es.20.110189.001131.)
- Tylianakis, J. M., Didham, R. K. & Wratten, S. D. 2004 Improved fitness of aphid parasitoids receiving resource subsidies. *Ecology* **85**, 658–666.
- van der Meijden, E. & van der Veen–van Wijk, C. A. M. 1997 Tritrophic metapopulation dynamics: a case study of ragwort, the cinnabar moth, and the parasitoid *Cotesia popularis*. In *Metapopulation biology* (ed. I. Hanski & M. E. Gilpin), pp. 387–405. San Diego: Academic Press.
- van Nouhuys, S. & Ehrnsten, J. 2004 Wasp behavior leads to uniform parasitism of a host available only a few hours per year. *Behav. Ecol.* **15**, 661–665. (doi:10.1093/beheco/ arh059.)
- van Nouhuys, S. & Hanski, I. 1999 Host diet affects extinctions and colonizations in a parasitoid metapopulation. *J. Anim. Ecol.* **68**, 1248–1258. (doi:10.1046/j.1365-2656.1999.00365.x.)
- van Nouhuys, S. & Hanski, I. 2002 Colonization rates and distances of a host butterfly and two specific parasitoids in a fragmented landscape. *J. Anim. Ecol.* **71**, 639–650. (doi:10.1046/j.1365-2656.2002.00627.x.)
- van Nouhuys, S. & Tay, W. T. 2001 Causes and consequences of small population size for a specialist parasitoid wasp. *Oecologia* **128**, 126–133. (doi:10.1007/s004420100635.)
- Walde, S. J. 1994 Immigration and the dynamics of a predator–prey interaction in biological control. *J. Anim. Ecol.* **63**, 337–346.
- Weisser, W. W. 2000 Metapopulation dynamics in an aphid–parasitoid system. *Entomol. Exp. Appl.* **97**, 83–92. (doi:10.1023/A:1004096312093.)
- Wiens, J. A. 1997 Metapopulation dynamics and landscape ecology. In *Metapopulation biology* (ed. I. Hanski & M. E. Gilpin), pp. 43–62. San Diego, CA: Academic Press.
- Wilson, H. B. & Hassell, M. P. 1997 Host–parasitoid spatial models: the interplay of demographic stochasticity and dynamics. *Proc. R. Soc. B* **264**, 1189–1195. (doi:10.1098/rspb.1997.0164.)
- With, K. A. 2004 Metapopulation dynamics: perspectives from landscape ecology. In *Ecology, genetics, and evolution of metapopulations* (ed. I. Hanski & O. E. Gaggiotti), pp. 23–44. Boston, MA: Elsevier Academic Press.
- With, K. A. & Crist, T. O. 1995 Critical thresholds in species' responses to landscape structure. *Ecology* **76**, 2446–2459.