

Molecular Cloning and Characterization of a Brassinosteroid-Regulated Gene from Elongating Soybean (*Glycine max* L.) Epicotyls¹

Daniel M. Zurek and Steven D. Clouse*

Department of Biology, San Diego State University, San Diego, California 92182

Brassinosteroids promote elongation and regulate gene expression in soybean (*Glycine max* L.) stems. We constructed a cDNA library from brassinosteroid-treated soybean epicotyls and used differential hybridization to isolate a cDNA (pBRU1) corresponding to a transcript whose abundance is increased by brassinosteroid treatment. Sequence analysis of pBRU1 revealed an open reading frame of 283 amino acids with a putative signal peptide of 29 amino acids. The sequence had extensive homology (77% identity, 89% similarity) over 114 contiguous amino acids to the *meri-5* gene of *Arabidopsis thaliana* (J.I. Medford, J.S. Elmer, H.J. Klee [1991] *Plant Cell* 3: 359–370), and significant homology (48% identity, 62% similarity) to a xyloglucan endotransglycosylase localized in the cell walls of nasturtium (J. de Silva, C.D. Jarman, D.A. Arrowsmith, M.S. Stronach, S. Chengappa, C. Sidebottom, J.S. Reid [1993] *Plant J* 3: 701–711). RNase protection studies showed that *BRU1* transcript levels are not increased by 1.0 μM auxins, cytokinins, abscisic acid, or gibberellic acid and that *BRU1* expression is highest in stem tissue. Findings from studies with run-on transcripts from isolated soybean nuclei most likely indicate that the regulation of *BRU1* by brassinosteroids is largely posttranscriptional. The elevated levels of *BRU1* transcripts in elongating tissue and the homology with a xyloglucan endotransglycosylase suggest a possible role for the *BRU1* protein in brassinosteroid-stimulated elongation.

Brassinosteroids are widely distributed natural products that promote growth at nanomolar concentrations and appear to possess all of the properties necessary for classification as plant hormones (Sasse, 1991a, 1992). Brassinosteroids are unique among plant growth regulators because of their close structural similarity to animal and insect steroid hormones (Mandava, 1988). Although a great deal is known about the molecular mechanisms by which steroid hormones regulate gene expression in vertebrates and insects (Evans, 1988), the gene-regulating properties of steroids found in higher plants are largely unknown. We recently used two-dimensional gel analysis to show that BR, a highly active brassinosteroid, altered the abundance of specific in vitro translatable mRNAs in elongating stem sections of soybean (*Glycine max* L.) and *Arabidopsis thaliana* (Clouse et al., 1992, 1993). Brassinoster-

oids were also shown to alter the levels of specific polypeptides in wheat leaves (Kulaeva et al., 1991) and pea stems (Sasse, 1991b). Moreover, Arteca et al. (1988) found that BR and IAA increased levels of ACC synthase in mung bean hypocotyls. In no case, however, has the cloning of a BR-responsive cDNA been reported. The objective of the present study was to clone and characterize a gene regulated by BR.

To clone a BR-regulated gene, we chose soybean epicotyls as a model system in which the molecular mechanisms underlying elongation could be examined. Brassinosteroids have a range of physiological effects, but promotion of stem elongation is perhaps the best characterized. BR-promoted elongation of young vegetative tissue has been observed in at least 15 different species and appears to be a general effect (Sasse, 1991a). We previously showed that BR is a potent enhancer of epicotyl elongation in soybeans (Clouse and Zurek, 1991), and we examined the effect of BR on cell wall mechanical properties and gene expression in this system (Clouse et al., 1992; Zurek et al., 1994). It is well known that auxin also promotes stem elongation (Taiz, 1984), and comparisons of auxin versus BR-stimulated growth showed that the kinetics of elongation and effects on gene expression were quite different for BR than for auxin (Clouse et al., 1992).

Soybean stems have also been used to clone auxin-regulated genes, and several gene families have been identified that are rapidly induced by auxin in elongating soybean hypocotyls (Walker and Key, 1982; Hagen et al., 1984; McClure and Guilfoyle, 1987). However, the functions of the corresponding gene products are unknown, and their causal roles in elongation have not been established. Because load-bearing bonds in the cell wall must be disrupted and reformed during elongation (Cosgrove, 1993), it is important to identify the genes responsible for altering wall properties. Recently, de Silva et al. (1993) reported the cloning of a cDNA for an XET from nasturtium that has been proposed to be a wall-loosening enzyme. Whether it is truly a wall-loosening enzyme is currently being debated (McQueen-Mason et al., 1993), but the localization of the enzyme in the cell wall and its substrate specificity for wall xyloglucans are known (de Silva et al., 1993; Fanutti et al., 1993).

In this paper we describe the cloning and characterization

¹ This research was supported in part by U.S. Department of Agriculture/National Research Initiative Competitive Grants Program grant 90-37261-5700 and National Science Foundation grant DCB-9013409.

* Corresponding author; fax 1-619-594-5676.

Abbreviations: BR, brassinolide; KPSC, 10 mM potassium phosphate (pH 6.0), 2% sucrose, 25 $\mu\text{g mL}^{-1}$ chloramphenicol; XET, xyloglucan endotransglycosylase.

of a cDNA (pBRU1) corresponding to a soybean epicotyl mRNA whose abundance is increased by BR treatment. Sequence analysis shows that pBRU1 has significant homology with the nasturtium XET and even greater homology with the *meri-5* gene of *A. thaliana* (Medford et al., 1991), which is expressed in meristematic and stem tissues of crucifer species. Results concerning the kinetics of induction, effects of other growth regulators on BRU1 expression, and the mechanism of regulation are presented.

MATERIALS AND METHODS

Plant Growth

Soybean seeds (*Glycine max* L., cv Williams 82, purchased from Wilkens Seed Grains, Pontiac, IL) imbibed water overnight and were sown in flats containing 50% vermiculite/50% perlite. For experiments requiring elongating epicotyl sections or for BRU1 expression studies of young plants, seedlings were grown for 10 to 14 d in a greenhouse under natural lighting conditions before harvesting. For BRU1 expression studies of older plant organs, 14-d-old seedlings were transplanted to individual pots containing University of California soil mix and grown for an additional 14 to 60 d in the same greenhouse.

Epicotyl Elongation Assays

BR [$2\alpha,3\alpha,22(R),23(R)$ -tetrahydroxy-24(S)-methyl-B-homo-7-oxa-5 α -cholestan-6-one] was synthesized by Dr. Trevor McMorris (University of California, San Diego) as previously described (McMorris et al., 1991) and stored as a 1 mM stock solution in absolute ethanol at -20°C . Epicotyl sections were obtained from the first 1.5 cm immediately below the plumule of 10- to 14-d-old soybean seedlings and floated on ice-cold KPSC buffer until required for the assay. Sections (20–25) were placed in a 50-mL Erlenmeyer flask containing 10 mL of KPSC and rotated at 125 rpm in a 27°C shaking incubator under continuous illumination ($25 \mu\text{E m}^{-2} \text{s}^{-1}$). Sections were preincubated for 2 h as previously described (Clouse et al., 1992) before the addition of fresh KPSC containing BR. Controls were incubated in KPSC with appropriate concentrations of ethanol. Epicotyl length was measured to the nearest 1 mm, and sections were homogenized for isolation of nuclei or immediately frozen in liquid N_2 for RNA isolation.

RNA Isolation and Analysis

Total RNA was isolated from frozen epicotyl sections with 4.0 M guanidinium isothiocyanate and acidified phenol by the method of Chomczynski and Sacchi (1987). Northern blot analysis was performed as previously described (Clouse et al., 1992) using as a probe 1×10^6 cpm mL^{-1} of the pBRU1 cDNA insert labeled with [^{32}P]dCTP by random priming (Prime-It II kit, Stratagene, La Jolla, CA). To confirm equal loading of RNA in each lane, blots were stripped and re-probed with a soybean actin cDNA (Clouse et al., 1992). Each blot was repeated a minimum of three times.

The probe for RNase protection assays was generated by

digesting pBRU1 with *Pst*I and rendering the resulting 3' overhang blunt ended with Klenow fragment of DNA polymerase I. After proteinase K digestion, phenol-chloroform extraction, and ethanol precipitation, the purified DNA fragment was used as a template for in vitro RNA transcription. The final reaction contained 1 μg of DNA; $1\times$ transcription buffer (40 mM Tris [pH 8.0], 8 mM MgCl_2 , 2 mM spermidine, 50 mM NaCl); 30 mM DTT; 40 units of RNase Block I; 50 μCi of [α - ^{32}P]UTP (800 Ci mmol^{-1}); 400 μM each ATP, GTP, and CTP; and 10 units of T7 RNA polymerase. After 30 min at 37°C , 10 units of RNase-free DNase was added, and the reaction was incubated for an additional 15 min. Labeled probe was separated from unincorporated nucleotides by passage through a NucTrap column (Stratagene). The resulting probe represented a 281-bp antisense RNA complementary to the 3' end of the BRU1 mRNA. RNase protection was performed by hybridizing 8×10^4 cpm of this probe with 5 μg of total RNA from various treatments using the Ribonuclease Protection Assay II kit (Ambion, Austin, TX) according to manufacturer's instructions. Gels were exposed to pre-flashed film with intensifying screens (Laskey and Mills, 1975) and quantitated by scanning densitometry in the linear range of A. The RNase protection experiment was performed in triplicate, and the densitometry results were averaged.

cDNA Library Construction and Screening

Apical epicotyl sections (1.5 cm) were excised from 11-d-old soybean seedlings and treated with KPSC buffer, buffer containing 0.1 μM BR, or buffer containing 50 μM 2,4-D for 17 h as described above. After total RNA isolation, polyadenylated RNA was purified from each treatment using biotinylated oligo(dT) and streptavidin-coated magnetic beads (PolyATtract system; Promega, Madison, WI). A cDNA library was constructed in λ Zap II from 7.2 μg of polyadenylated RNA (0.1 μM BR treatment), following the manufacturer's instructions (Stratagene). The unamplified library contained 1.11×10^6 primary plaques with a 2.3% non-recombinant background. After a single amplification, the library was stored in 7% DMSO at -80°C .

For differential screening of the cDNA library, duplicate lifts were made from 10 plates (150 mm, 1000 plaque-forming units/plate). Each duplicate set was hybridized with ^{32}P -labeled first-strand cDNA synthesized from polyadenylated RNA isolated from the buffer or BR-treated epicotyls. Details of probe synthesis, hybridization, and washing conditions are described elsewhere (Cochran et al., 1987). Examination of the resulting autoradiographs revealed 12 plaques that hybridized more strongly to the plus-BR probe than to the control probe. The 12 plaques were picked and rescued into plasmid form (Bluescript SK-) by in vivo excision with R408 m13 helper phage as described by the manufacturer (Stratagene).

The 12 recombinant plasmids were subjected to dot blot analysis in duplicate using Zeta-Probe nylon membranes (Bio-Rad, Richmond, CA). One set of dot blots was hybridized with ^{32}P -labeled first-strand cDNA synthesized from polyadenylated RNA isolated from BR-treated epicotyls, and the duplicate set was hybridized with cDNA derived from polyadenylated RNA from 2,4-D-treated epicotyl tissue. A

single cDNA clone, pBRU1, that hybridized to the plus-BR but not the plus-auxin probe was identified.

DNA Sequence Analysis

Nested deletions of pBRU1 were made with exonuclease III by the procedure of Henikoff (1984). Both strands of the original clone and the deletions were sequenced by two independent methods: manually, using dideoxy thermal cycle sequencing (Vent Polymerase; New England Biolabs, Beverly, MA), and with Taq polymerase on an Applied Biosystems 373A automated sequencer. Areas of ambiguity were resolved manually with Sequenase 2.0 (United States Biochemical, Cleveland, OH).

The DNA sequence was analyzed using the University of Wisconsin Genetics Computer Group package (Devereux et al., 1984) on a VAX computer. After the open reading frame was identified, the program PEPTIDESTRUCTURE was used to determine molecular mass, isoelectric point, and hydrophobicity (using the algorithm of Kyte and Doolittle, 1982). Initial sequence comparisons were performed using the National Library of Medicine NIH BLAST program (Altschul et al., 1990). Positives were retrieved from SwissProt, Protein Information Resource, and GenBank libraries, and percentages of identity and similarity were determined with the University of Wisconsin Genetics Computer Group program BESTFIT.

Genomic DNA Isolation and Southern Blot Analysis

Soybean seedlings were grown in a greenhouse for 12 d and then transferred to a dark growth chamber for 48 h to reduce starch content. Leaf tissue (5 g) was ground to a fine powder in liquid N₂ and transferred to a 50-mL conical tube. After the liquid N₂ was sublimated, the powder was suspended in 25 mL of extraction buffer (100 mM Tris [pH 8.0], 100 mM EDTA [pH 8.0], 250 mM NaCl). Sarkosyl was added (1% [v/v] final concentration), followed by proteinase K (1 mg mL⁻¹ final concentration), and the mixture was incubated at 55°C for 2 h. After the mixture was centrifuged for 10 min at 2000g, the supernatant was extracted twice with phenol:chloroform:isoamyl alcohol (24:24:1, equilibrated with extraction buffer). Finally, the aqueous phase was ethanol precipitated with high salt as described by Fang et al. (1992) to remove polysaccharides.

Aliquots (20 µg) of genomic DNA were digested with various restriction enzymes overnight in the presence of 3 mM spermidine before separation on 0.8% agarose gels. DNA was transferred under pressure to a Duralon-UV nylon membrane and UV cross-linked as directed by the manufacturer (Stratagene). The blot was prehybridized and hybridized as previously described (Clouse et al., 1992). The pBRU1 cDNA insert, labeled with [³²P]dCTP by random priming (Prime-It II kit), was used for the probe at 4 × 10⁶ cpm mL⁻¹. Washes were as previously described (Clouse et al., 1992) with the addition of a high stringency wash in 0.1× SSC, 0.1% SDS at 68°C. The blot was exposed with two intensifying screens at -80°C for 7 d.

Nuclear Isolation and Run-On Transcription

Epicotyl sections (apical 1.5 cm) were excised from 9- to 11-d-old soybean seedlings and treated as described above with or without 0.1 µM BR. Nuclei were isolated using the procedure of Luthe and Quatrano (1980) as modified by Lawton and Lamb (1987) with the exceptions that (a) tissue was used immediately without freezing; (b) homogenized tissue was filtered successively through 60-, 52-, and 20-µm meshes; and (c) the Percoll step gradient was centrifuged for 45 min rather than for 30 min. Isolated nuclei were examined microscopically after staining with 4',6'-diamidine-2-phenylindole dihydrochloride and quantitated in a hemocytometer. Nuclei were assayed for transcriptional activity by determining the incorporation of [α -³²P]UTP (600 Ci mmol⁻¹) in response to different times of incubation and number of nuclei. Typical reaction conditions were a 30-min incubation with 5 × 10⁵ nuclei at 26°C. Reaction buffers and other details of preparing labeled run-on transcripts were as described by Lawton and Lamb (1987).

Slot blots were generated by blotting (in triplicate) 10 µg of test or control cDNAs on Zeta-Probe nylon membranes (Bio-Rad) following manufacturer's instructions. The pBRU1 and soybean actin cDNAs were obtained from the 17-h BR-treated soybean epicotyl library. A partial cDNA for tomato hydroxymethylglutaryl CoA reductase cDNA was obtained from Dr. Carole Cramer (Virginia Polytechnic Institute and State University, Blacksburg, VA). As an additional control, we included 100 ng of a cDNA for 25S rRNA obtained from a *Helianthus tuberosus* cDNA library (M.B. Buchanan and S.D. Clouse, unpublished data).

Duplicate blots were hybridized for 18 h at 42°C with 10⁷ cpm mL⁻¹ of nuclear run-on transcripts from control or BR-treated tissue in 40% formamide, 1.0% SDS, 5× Denhardt's solution, and 100 µg mL⁻¹ of sheared, denatured salmon sperm DNA. Blots were washed in 2× SSC, 0.1% SDS once at room temperature and once at 42°C and in 0.2× SSC, 0.1% SDS twice at 42°C and twice at 50°C. Blots were exposed to preflashed film with one intensifying screen (Lasky and Mills, 1975) and developed in the linear range of intensity for scanning densitometry.

RESULTS

Cloning of a BR-Regulated cDNA

We previously found by *in vitro* translation and two-dimensional PAGE that BR altered the abundance of specific transcripts in elongating soybean stems (Clouse and Zurek, 1991; Clouse et al., 1992). To clone a representative gene whose expression is regulated by BR, polyadenylated RNA was isolated from BR-treated soybean epicotyl sections and used to construct a cDNA library in λZAPII. Using differential hybridization, we isolated a clone (subsequently named pBRU1) corresponding to an mRNA of approximately 1050 nucleotides whose abundance was increased by BR treatment. Figure 1 shows the kinetics of *BRU1* expression in response to BR and auxin during a typical elongation assay in excised soybean epicotyls. The growth data for the epicotyl sections used in Figure 1 can be found in figure 4 of Clouse et al.

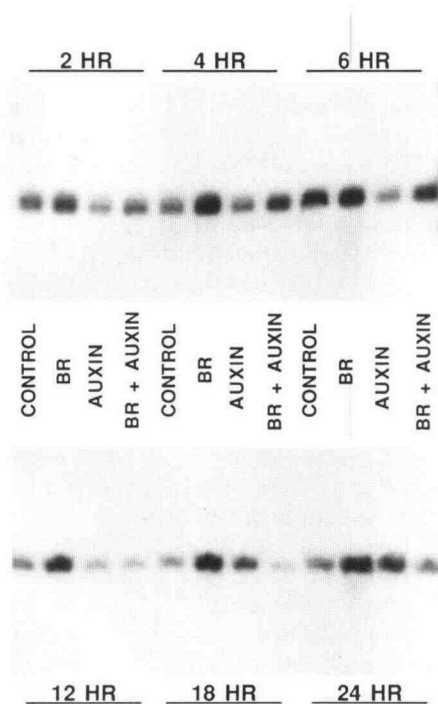


Figure 1. Kinetics of *BRU1* expression. Soybean epicotyl sections were obtained from the first 1.5 cm immediately below the plumule of 10- to 14-d-old soybean seedlings and treated for the times indicated as described in "Materials and Methods." CONTROL, KPSC buffer; BR, 10^{-7} M BR; AUXIN, 5×10^{-5} M 2,4-D; BR + AUX, 10^{-7} M BR plus 5×10^{-5} M 2,4-D. Total RNA was isolated, and northern blot analysis was performed on 40 μ g of RNA per lane as previously described (Clouse et al., 1992), using as probe 1×10^6 cpm mL $^{-1}$ of the pBRU1 cDNA insert labeled with [32 P]dCTP. Molecular size markers indicated that the band was approximately 1050 nucleotides.

(1992). At early times auxin failed to increase, and, in fact, effectively decreased, *BRU1* transcript levels. At 18 and 24 h auxin slightly increased *BRU1* message abundance but not to the same extent as BR treatment. Scanning densitometry of duplicate blots showed that 0.1 μ M BR increased *BRU1* transcript levels 1.5-fold after 2 h, 2.8-fold after 4 h, and 4.9-fold after 18 h. The elevated level of *BRU1* expression in the 6-h control appears to be an artifact of hybridization (not of loading, because probing the blot with an actin cDNA showed equal amounts of RNA loaded). Three repetitions of the northern experiment and duplicate RNase protection experiments (using the same 6-h RNA set) showed a pattern of expression similar to that seen for the 4-h time in Figure 1.

We attempted to determine the earliest time of *BRU1* induction by RNase protection experiments 15, 30, and 60 min after addition of 0.1 μ M BR or 50 μ M 2,4-D to soybean epicotyl sections. However, scanning densitometry showed no detectable difference in *BRU1* transcript levels between control and hormone-treated segments at any of these early times (data not shown). Thus, 2 h appears to represent the earliest increase in *BRU1* transcript abundance stimulated by BR. A dose-response experiment (data not shown) indicated

that 10^{-9} M BR caused a slight increase in *BRU1* transcript levels with maximum expression reached at 10^{-7} M, followed by a slight decrease or plateau at 10^{-6} M BR. This parallels closely the dose-response curve of the effect of different BR concentrations on overall epicotyl elongation found previously (Clouse et al., 1992).

Sequence Analysis of pBRU1

The initial differential screening of 10,000 plaques from the BR-induced soybean epicotyl cDNA library resulted in a positive clone with an insert of 820 bp, which is too short to represent the transcript of 1050 nucleotides estimated by RNA gel blot analysis. We sequenced this clone and synthesized an oligonucleotide complementary to the 5' end that was used as a probe to rescreen the cDNA library. A positive clone with an insert of 1075 bp was isolated and completely sequenced as shown in Figure 2. The cDNA contained an open reading frame of 283 amino acids beginning with an ATG at +27 and terminating with TGA at +875. The initial AUG codon was in the context of the plant consensus sequence for the start site of translation, with 9 of 12 bases conserved, including the highly conserved A residue 3 bases upstream of the AUG (Joshi, 1987). An AAUAAA polyadenylation signal (Darnell, 1982) was located 22 bases upstream of the polyadenylation start site.

Computer analysis of the putative polypeptide revealed a

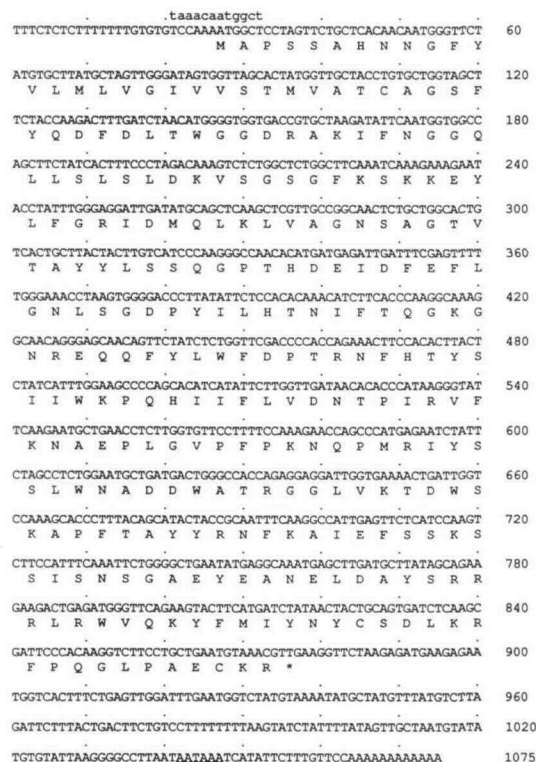


Figure 2. Nucleotide sequence of pBRU1 with derived amino acid sequence. The lowercase sequence above the first line represents the consensus sequence for plant translation initiation (Joshi, 1987). A putative polyadenylation sequence (AATAAA) is underlined.

Southern Blot Analysis

Soybean genomic DNA was digested with several restriction enzymes and analyzed by the Southern procedure using an 820-bp fragment from the 3' end of pBRU1 as the probe. As shown in Figure 5, two major bands appeared for each enzyme used. Neither *EcoRI*, *HindIII*, nor *XbaI* cuts within the cDNA sequence, but without knowledge of these sites in potential introns it is not possible to determine whether the *BRU1* gene occurs in one or two copies in the soybean genome. Although several faint bands remained after high-stringency washes, indicating related sequences, it is clear that *BRU1* does not occur as a member of a large, multigene family. This is consistent with the copy number of the homologous *meri-5* and *NXG1* genes, both of which are single-copy genes.

Effect of Different Growth Regulators on *BRU1* Transcript Levels

The effect of various plant growth regulators on *BRU1* expression was determined by RNase protection studies using the standard soybean epicotyl elongation assay. Figure 6 clearly shows that BR was the most effective of the compounds tested in promoting soybean epicotyl elongation and that only BR resulted in an increase in *BRU1* transcript levels under these conditions. Although GA₃, IAA, and 2,4-D also promoted elongation, they resulted in a reproducible decrease in *BRU1* transcript levels. This indicates that increased *BRU1* expression is not simply the result of elongation per se but rather that *BRU1* message increases in response to BR treatment. The results presented in Figure 1 show that auxin may slightly enhance *BRU1* expression at 18 and 24 h, whereas Figure 6 shows a decrease in *BRU1* expression in auxin-treated tissue at 19 h. This apparent discrepancy may be due to differences in auxin concentration between the two experiments (1.0 μM in the RNase protection experiment versus 50 μM in the northern blot). We are investigating further the effect of auxin on *BRU1* expression using competitive polymerase chain reaction (Siebert and Larrick, 1992) to accurately quantitate mRNA levels.

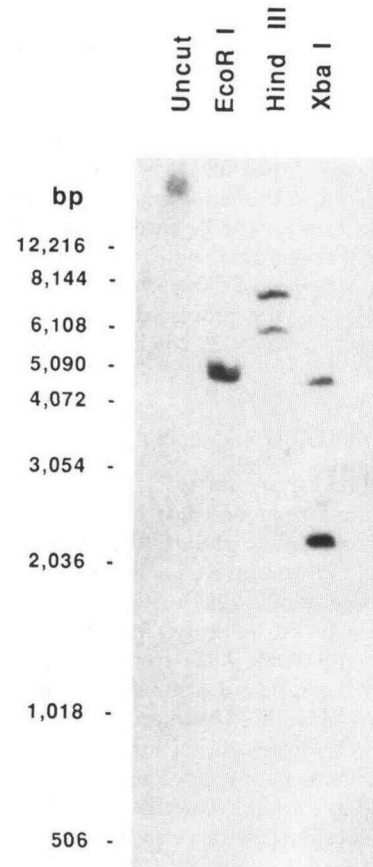


Figure 5. Southern blot of soybean genomic DNA. The probe was 4×10^6 cpm mL⁻¹ of the pBRU1 cDNA insert labeled with [³²P]dCTP.

BRU1 Expression in Untreated Plants

RNase protection assays were used to monitor *BRU1* transcript levels in different tissues and developmental stages of soybean. Figure 7 shows that highest expression was observed in 14-d-old stem tissue, with epicotyl expression (both apical and basal) slightly exceeding that of hypocotyl. Apical

Table I. Sequences showing highest homology to full-length *BRU1* open reading frame

Sequence	Percentage Similarity	Percentage Identity	Match Length	Reference
<i>A. thaliana meri-5</i>	68	49	267 amino acids	Medford et al., 1991
<i>meri-5</i> (nucleotide)	71	71	768 bp	Medford et al., 1991
<i>Nasturtium XET (NXG1)</i>	56	37	300 amino acids	de Silva et al., 1993
<i>NXG1</i> (nucleotide)	57	57	352 bp	de Silva et al., 1993
Bacterial lichenases				
<i>Bacillus polymyxa</i>	54	30	254 amino acids	Gosalbes et al., 1991
<i>Bacillus subtilis</i>	52	29	259 amino acids	Tezuka et al., 1989
<i>Bacillus licheniformis</i>	52	29	260 amino acids	Lloberas et al., 1991
<i>Bacillus amyloliquefaciens</i>	53	28	246 amino acids	Hofemeister et al., 1986
<i>Bacillus macerans</i>	49	28	247 amino acids	Borriss et al., 1990
<i>Bacillus subtilis</i>	51	27	259 amino acids	Murphy et al., 1984

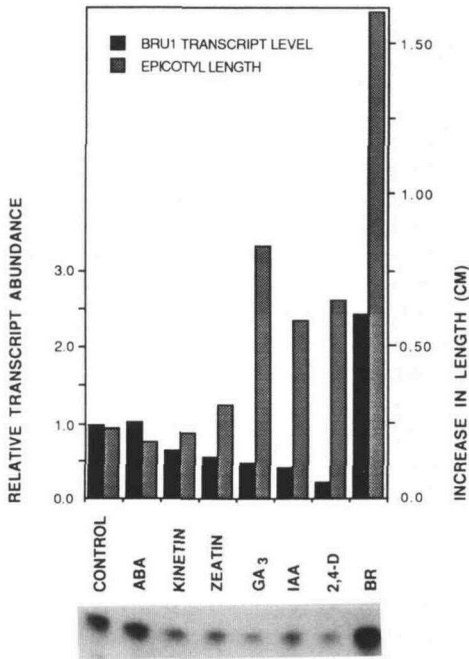


Figure 6. Comparison of the effect of various growth regulators on elongation and *BRU1* expression in soybean epicotyls. Soybean epicotyls (25 replicates) were treated for 19 h as described in "Materials and Methods" with 1.0 μM of the indicated compound. After elongation was measured, total RNA was isolated, and 5- μg total RNA samples were subjected to RNase protection studies using a 281-bp antisense RNA complementary to the 3' end of the *BRU1* mRNA as the probe. Gels were exposed to preflashed film and quantitated by scanning densitometry. The RNase protection experiment was performed in duplicate, and the densitometry results were averaged.

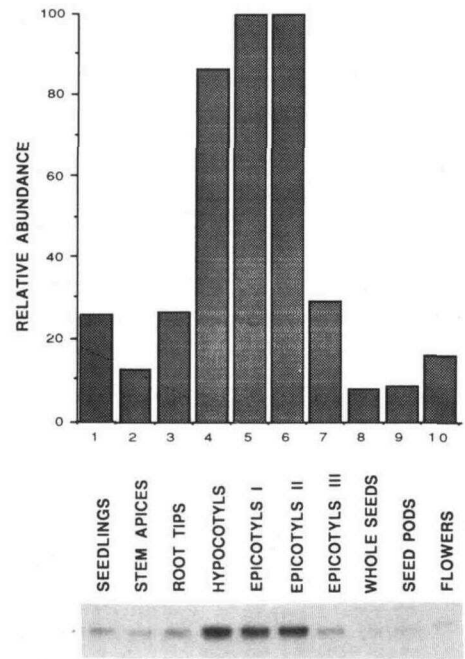


Figure 7. *BRU1* expression in untreated soybean plants. Total RNA was isolated from various soybean organs and analyzed by RNase protection as described in Figure 6. Seedlings were from 2-d etiolated sprouts; stem apices and root tips were from 14-d plants; hypocotyls were 14-d apical sections; epicotyls I were 14-d apical sections; epicotyls II were 14-d basal sections; epicotyls III were 28-d apical sections; seeds, seed pods, and flowers were from 75-d plants. The RNase protection experiment was performed in triplicate, and the densitometry results were averaged.

epicotyl expression decreased 4-fold by 28 d. Stem apices showed low levels of *BRU1* expression. However, we did not dissect out meristems to determine whether *BRU1*, like *meri-5*, had high levels of expression in this localized tissue. Because meristematic cells make up only a small portion of the shoot apex, genes whose expression is limited to the dome of the meristem would not be detected in an RNA sample isolated from the entire stem apex (Medford et al., 1991). *BRU1* transcript levels in 14- and 28-d primary leaves were less than 7% of the level in 14-d epicotyls (data not shown).

Regulation of *BRU1* Expression by BR Appears to Be Posttranscriptional

Northern blots and RNase protection experiments do not definitively show whether an increased abundance in a specific transcript is due to transcriptional or posttranscriptional (such as mRNA stability) events. The most common method used to distinguish between these levels of eukaryotic gene control is run-on transcription in isolated nuclei (Darnell, 1982). To investigate the mechanism of increased *BRU1* expression, we isolated nuclei from soybean epicotyls treated with or without 0.1 μM BR for various times and performed run-on transcription assays. Figure 8 shows that BR does not

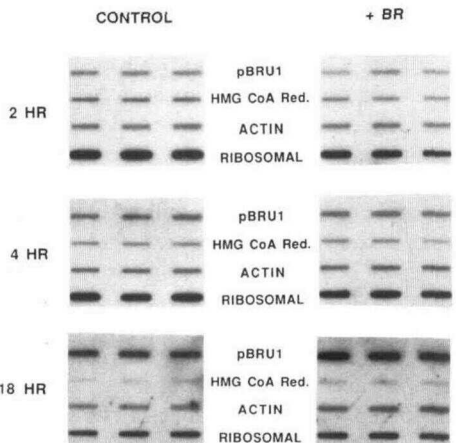


Figure 8. Run-on transcription in isolated nuclei. Epicotyl sections (apical 1.5 cm) were excised from 9- to 11-d-old soybean seedlings and treated with 0.1 μM BR for 2, 4, or 18 h or were untreated. Nuclei were isolated, and labeled run-on transcripts were prepared and hybridized to duplicate slot blots as described in "Materials and Methods." HMG CoA Red., Hydroxymethylglutaryl CoA reductase.

cause induction of *BRU1* at the transcriptional level in soybean epicotyls after 2 or 4 h, even though northern blot analysis shows that *BRU1* transcript levels are higher in BR-treated tissue than in control tissue at these times (see Fig. 1). Although Figure 8 appears to show a slight induction by BR at 18 h, scanning densitometry of duplicate experiments (six data points for each treatment) showed no significant difference between control and BR-treated tissue. Recall that 18 h (Fig. 1) was the time of maximum difference in *BRU1* transcript levels between control and BR-treated tissue in northern blot analysis. Therefore, at all times examined, BR appears to be regulating *BRU1* expression at a posttranscriptional level.

DISCUSSION

In this paper we have presented the cloning and partial molecular characterization of a cDNA corresponding to a BR-responsive gene. Several lines of evidence suggest that the *BRU1* gene encodes an enzyme that has some type of cell wall activity, possibly associated with BR-stimulated elongation. The sequence analysis gives clear evidence of a signal peptide, which would be required for export to the cell wall, and the sequence homology with the XET (de Silva et al., 1993), which has a documented catalytic activity on cell wall polymers, is further evidence that the *BRU1* gene product may act on cell walls. Moreover, *BRU1* shows an eight of nine amino acid identity with the region proposed to be the catalytic site of *Bacillus lichenases* (Borriss et al., 1990), which have plant cell wall-degrading activity. Also, expression of *BRU1* is quite high in apical regions of hypocotyls and epicotyls, which are very responsive to BR-promoted elongation. It should be noted that *BRU1* transcript levels are also high in basal epicotyls, which do not elongate in response to BR (Clouse and Zurek, 1991), but one could argue that changes in wall structure in the more mature tissue result in insensitivity to BR-promoted elongation.

Although the evidence cited above suggests that the *BRU1* gene product may act on cell walls, we do not have sufficient data to claim that *BRU1* encodes a wall-loosening enzyme. First, the homology with the nasturtium XET is significant but does not prove that the *BRU1* protein is a xyloglucan-specific endotransglycosylase; it may belong to a family of related enzymes with a variety of cell wall activities of which XET, *BRU1*, and *meri-5* are all members. Furthermore, although it has recently been proposed that XET is a wall-loosening enzyme (Fry et al., 1992; Nishitani and Tominaga, 1992; de Silva et al., 1993), no direct biophysical evidence has been provided. In fact, McQueen-Mason et al. (1993) recently showed that a crude extract containing high XET activity did not cause extension in isolated cucumber walls. Nevertheless, even if XET is ultimately shown not to be a wall-loosening enzyme, it still may have an important role in elongation, such as anchoring newly deposited xyloglucan into the wall or controlling xyloglucan chain length (Cosgrove, 1993). To further define *BRU1* function, we have cloned the full-length cDNA into a baculovirus vector and are currently overexpressing the product in insect cells in an attempt to recover a functional *BRU1* gene product. Functional characterization of *BRU1* should also be revealing with

respect to the *meri-5* gene because the extensive homology between the two genes makes it highly likely that they both have the same function. We have previously shown that BR also promotes elongation in *Arabidopsis* stem sections (Clouse et al., 1993), and we are currently examining the effects of BR on *meri-5* expression in *Arabidopsis* stems.

The cloning of a gene regulated by BR allows for the first time direct examination of the mechanisms of gene regulation by a plant steroid. One might argue from structural considerations that brassinosteroids may act by a mechanism similar to that of animal steroid hormones. In general, such hormones function via a soluble receptor/ligand complex that binds to nuclear sites to regulate the expression of specific genes at the transcriptional level (Evans, 1988). Our results from run-on transcription experiments in isolated epicotyl nuclei indicate that BR probably regulates *BRU1* expression at a posttranscriptional level and, thus, does not fit the classical animal model. However, although posttranscriptional regulation by hormones is not as common as transcriptional regulation, it is by no means rare. Brock and Shapiro (1983) showed that estrogen stabilizes vitellogenin mRNA against cytoplasmic degradation, and several other examples of posttranscriptional regulation by animal steroid hormones have been cited (Darnell, 1982). Numerous examples of posttranscriptional gene regulation by plant growth regulators have also been reported (reviewed by Gallie, 1993; Green, 1993). ABA (Williamson and Quatrano, 1988), cytokinin (Flores and Tobin, 1986), and ethylene (Lincoln and Fisher, 1988) all have been shown to stabilize specific mRNAs. Furthermore, the auxin-inducible *SAUR* genes (McClure et al., 1989) have recently been shown to possess *cis* elements in the 3' untranslated tail that lead to destabilization of the *SAUR* mRNA (Franco et al., 1990) and also to destabilization of β -glucuronidase mRNA when placed in the 3' tail of a β -glucuronidase reporter construct (Newman et al., 1993). We are currently using protein and RNA synthesis inhibitors in conjunction with BR to further understand the posttranscriptional regulation of *BRU1*.

Whereas *BRU1* appears to be regulated at the posttranscriptional level, we have preliminary evidence that BR can also control gene expression at the level of transcription. Using the same cDNA library from which pBRU1 was cloned, we have isolated a second BR-responsive clone that is unrelated to pBRU1. Run-on transcription assays have shown that this newly cloned gene may be transcriptionally regulated by BR (D.M. Zurek and S.D. Clouse, unpublished data). The cloning of *BRU1* and other BR-regulated genes will allow the application of a variety of molecular techniques to help clarify the mechanism of BR action. For example, construction of transgenic plants overexpressing *BRU1* or expressing *BRU1* antisense RNA will allow critical testing of the importance of *BRU1* in stem elongation. Furthermore, the availability of BR-specific gene probes will allow detailed studies of the mechanism of gene regulation by endogenous plant steroids.

ACKNOWLEDGMENTS

We wish to thank Drs. Trevor McMorris and Michael Baker for samples of BR and Drs. David Rayle and Ken Johnson for critically reading the manuscript. Finally, we appreciate the gift of the hydroxymethylglutaryl CoA reductase cDNA from Dr. Carol Cramer.

Received July 23, 1993; accepted September 14, 1993.

Copyright Clearance Center: 0032-0889/94/104/0161/10.

The GenBank accession number for the sequence reported in this article is L22162.

LITERATURE CITED

- Altschul SF, Gish W, Miller W, Myers EW, Lipman DJ (1990) Basic local alignment search tool. *J Mol Biol* **215**: 403–410
- Arteca RN, Bachman JM, Mandava BN (1988) Effects of indole-3-acetic acid and brassinosteroid on ethylene biosynthesis in etiolated mung bean hypocotyls segments. *J Plant Physiol* **133**: 430–435
- Borriss R, Buettner K, Maentsaelae P (1990) Structure of the beta-1,3-1,4-glucanase gene of *Bacillus macerans*: homologies to other beta-glucanases. *Mol Gen Genet* **222**: 278–283
- Brock ML, Shapiro DJ (1983) Estrogen stabilizes vitellogenin mRNA against cytoplasmic degradation. *Cell* **34**: 207–214
- Chomczynski P, Sacchi N (1987) Single-step method of RNA isolation by acid guanidinium extraction. *Anal Biochem* **162**: 156–159
- Clouse SD, Langford M, Hall AF, McMorris TC, Baker ME (1993) Physiological and molecular effects of brassinosteroids on *Arabidopsis thaliana*. *J Plant Growth Regul* **12**: 61–66
- Clouse SD, Zurek DM (1991) Molecular analysis of brassinolide action in plant growth and development. In HG Cutler, T Yokota, G Adam, eds, *Brassinosteroids: Chemistry, Bioactivity and Applications*, American Chemical Society symposium series 474. American Chemical Society, Washington, DC, pp 122–140
- Clouse SD, Zurek DM, McMorris TC, Baker ME (1992) Effect of brassinolide on gene expression in elongating soybean epicotyls. *Plant Physiol* **100**: 1377–1383
- Cochran BH, Zumstein P, Zullo J, Barrett R, Mercola M, Stiles CD (1987) Differential colony hybridization: molecular cloning from a zero data base. *Methods Enzymol* **147**: 64–85
- Cosgrove DJ (1993) How do plant cell walls extend? *Plant Physiol* **102**: 1–6
- Darnell JE (1982) Variety in the level of gene control in eukaryotic cells. *Nature* **297**: 365–371
- de Silva J, Jarman CD, Arrowsmith DA, Stronach MS, Chengappa S, Sidebottom C, Reid JS (1993) Molecular characterization of a xyloglucan-specific endo-(1,4)- β -D-glucanase (xyloglucan endotransglycosylase) from nasturtium seeds. *Plant J* **3**: 701–711
- Devereux J, Haerberli P, Smithies O (1984) A comprehensive set of sequence analysis programs for the VAX. *Nucleic Acids Res* **12**: 387–395
- Evans RM (1988) The steroid and thyroid hormone receptor superfamily. *Science* **240**: 889–895
- Fang G, Hammar S, Grumet R (1992) A quick and inexpensive method for removing polysaccharides from plant genomic DNA. *Biotechniques* **13**: 52–54
- Fanutti C, Gidley MJ, Reid JS (1993) Action of a pure xyloglucan endo-transglycosylase from the cotyledons of germinated nasturtium seeds. *Plant J* **3**: 691–700
- Flores S, Tobin EM (1986) Benzyladenine modulation of the expression of two genes for nuclear-encoded chloroplast proteins in *Lemna gibba*: apparent post-transcriptional regulation. *Planta* **168**: 340–349
- Franco AR, Gee MA, Guilfoyle TJ (1990) Induction and superinduction of auxin-responsive mRNAs with auxin and protein synthesis inhibitors. *J Biol Chem* **265**: 15845–15849
- Fry SC, Smith RC, Renwick KF, Martin DJ, Hodge SK, Matthews KJ (1992) Xyloglucan endotransglycosylase, a new wall-loosening enzyme activity from plants. *Biochem J* **282**: 821–828
- Gallie DR (1993) Posttranscriptional regulation of gene expression in plants. *Annu Rev Plant Physiol Plant Mol Biol* **44**: 77–105
- Gosalbes MJ, Perez-Gonzalez JA, Gonzalez R, Navarro A (1991) Two β -glucanase genes are clustered in *Bacillus polymyxa*: molecular cloning, expression, and sequence analysis of genes encoding a xylanase and an endo- β -(1,3)-(1,4)-glucanase. *J Bacteriol* **173**: 7705–7710
- Green PJ (1993) Control of mRNA stability in higher plants. *Plant Physiol* **102**: 1065–1070
- Hagen G, Kleinschmidt A, Guilfoyle T (1984) Auxin-regulated gene expression in intact soybean hypocotyl and excised hypocotyl sections. *Planta* **162**: 147–153
- Henikoff S (1984) Unidirectional digestion with exonuclease III creates targeted breakpoints for DNA sequencing. *Gene* **28**: 351–359
- Hofemeister J, Kurtz A, Borriss R, Knowles J (1986) The β -glucanase gene from *Bacillus amyloliquefaciens* shows extensive homology with that of *Bacillus subtilis*. *Gene* **49**: 177–187
- Joshi CP (1987) An inspection of the domain between the putative TATA box and translation start site in 79 plant genes. *Nucleic Acids Res* **15**: 6643–6653
- Kulaeva ON, Burkhanova EA, Fedina AB, Khokhlova VA, Bokayeva GA, Vorbrodt HM, Adam G (1991) Effect of brassinosteroids on protein synthesis and plant-cell ultrastructure under stress conditions. In HG Cutler, T Yokota, G Adam, eds, *Brassinosteroids: Chemistry, Bioactivity and Applications*, American Chemical Society symposium series 474. American Chemical Society, Washington, DC, pp 141–155
- Kyte J, Doolittle R (1982) A simple method for displaying the hydrophobic character of a protein. *J Mol Biol* **157**: 105–132
- Laskey RA, Mills AD (1975) Quantitative film detection of ^3H and ^{14}C in polyacrylamide gels by fluorography. *Eur J Biochem* **56**: 335–341
- Lawton MA, Lamb CJ (1987) Transcriptional activation of plant defense genes by fungal elicitor, wounding and infection. *Mol Cell Biol* **7**: 335–341
- Lincoln JE, Fisher RL (1988) Diverse mechanisms for the regulation of ethylene-inducible gene expression. *Mol Gen Genet* **212**: 71–75
- Lloberas J, Perez-Pons JA, Querol E (1991) Molecular cloning, expression and nucleotide sequence of the endo- β -1,3-1,4-D-glucanase gene from *Bacillus licheniformis*. *Eur J Biochem* **197**: 337–343
- Luthe DS, Quatrano RS (1980) Transcription in isolated nuclei. Isolation of nuclei and elimination of endogenous ribonuclease activity. *Plant Physiol* **65**: 305–308
- Mandava NB (1988) Plant growth-promoting brassinosteroids. *Annu Rev Plant Physiol Plant Mol Biol* **39**: 23–52
- McClure BA, Guilfoyle T (1987) Characterization of a class of small auxin-inducible soybean polyadenylated RNAs. *Plant Mol Biol* **9**: 611–623
- McClure BA, Hagen G, Brown CS, Gee MA, Guilfoyle TJ (1989) Transcription, organization and sequence of an auxin-regulated gene cluster in soybean. *Plant Cell* **1**: 229–239
- McMorris TC, Donaubaer JR, Silveira MH, Molinski TF (1991) Synthesis of brassinolide. In HG Cutler, T Yokota, G Adam, eds, *Brassinosteroids: Chemistry, Bioactivity and Applications*, American Chemical Society symposium series 474. American Chemical Society, Washington, DC, pp 36–42
- McQueen-Mason SJ, Fry SC, Durachko DM, Cosgrove DJ (1993) Xyloglucan endotransglycosylase and in vitro wall extension in cucumber hypocotyls (abstract No. 692). *Plant Physiol* **102**: S-122
- Medford JI, Elmer JS, Klee HJ (1991) Molecular cloning and characterization of genes expressed in shoot apical meristems. *Plant Cell* **3**: 359–370
- Murphy N, McConnell DJ, Cantwell BA (1984) The DNA sequence of the gene and genetic control sites for the excreted *B. subtilis* enzyme beta-glucanase. *Nucleic Acids Res* **12**: 5355–5367
- Newman TC, Ohme-Takagi M, Taylor CB, Green PJ (1993) DST sequences, highly conserved among plant SAUR genes, target reporter transcripts for rapid decay in tobacco. *Plant Cell* **5**: 701–714
- Nishitani K, Tominaga R (1992) Endo-xyloglucan transferase, a novel class of glycosyltransferase that catalyzes transfer of a segment of xyloglucan molecule to another xyloglucan molecule. *J Biol Chem* **267**: 21058–21064
- Peschke VM, Sachs MM (1994) Characterization and expression of transcripts induced by oxygen deprivation in maize. *Plant Physiol* (in press)
- Sasse JM (1991a) The case for brassinosteroids as endogenous plant hormones. In HG Cutler, T Yokota, G Adam, eds, *Brassinosteroids: Chemistry, Bioactivity and Applications*, American Chemical Society symposium series 474. American Chemical Society, Washington, DC, pp 158–166

- Sasse JM** (1991b) Brassinolide-induced elongation. In HG Cutler, T Yokota, G Adam, eds, *Brassinosteroids: Chemistry, Bioactivity and Applications*, American Chemical Society symposium series 474. American Chemical Society, Washington, DC, pp 255–264
- Sasse JM, Yokota T, Taylor PE, Griffiths PG, Porter QN, Cameron DW** (1992) Brassinolide-induced elongation. In CM Karssen, LC van Loon, D Vreugdenhil, eds, *Progress in Plant Growth Regulation*, Vol 13: Current Plant Science and Biotechnology in Agriculture. Kluwer, Dordrecht, The Netherlands, pp 319–325
- Siebert PD, Larrick JW** (1992) Competitive PCR. *Nature* **359**: 557–558
- Taiz L** (1984) Plant cell expansion: regulation of cell wall mechanical properties. *Annu Rev Plant Physiol* **35**: 585–657
- Tezuka H, Yuuki T, Yabuuchi S** (1989) Construction of a beta-glucanase hyperproducing *Bacillus subtilis* using the cloned beta-glucanase gene and a multi-copy plasmid. *Agric Biol Chem* **53**: 2335–2339
- von Heijne G** (1983) Patterns of amino acids near signal-sequence cleavage sites. *Eur J Biochem* **133**: 17–21
- Walker JC, Key JL** (1982) Isolation of cloned cDNAs to auxin-responsive poly(A)⁺ RNAs of elongating soybean hypocotyl. *Proc Natl Acad Sci USA* **79**: 7185–7189
- Williamson JD, Quatrano RS** (1988) ABA-regulation of two classes of embryo-specific sequences in mature wheat embryos. *Plant Physiol* **86**: 208–215
- Zurek DM, Rayle DL, McMorris TC, Clouse SD** (1994) Investigation of gene expression, growth kinetics, and wall extensibility during brassinosteroid-regulated stem elongation. *Plant Physiol* (in press)