

Research

Open Access

Spatio-temporal effects of estimated pollutants released from an industrial estate on the occurrence of respiratory disease in Maptaphut Municipality, Thailand

Somchai Jadsri*^{†1}, Pratap Singhasivanon^{†1}, Jaranit Kaewkungwal^{†1}, Rattana Sithiprasasna^{†2}, Somkiat Siriruttanapruk^{†3} and Supawadee Konchom^{†4}

Address: ¹Department of Tropical Hygiene, Faculty of Tropical Medicine, Mahidol University, Rajvithi Road, Bangkok, Thailand, ²Mosquito Biology Section, Department of Entomology, Armed Forces Research Institute of Medical Science (AFRIMS), Bangkok, Thailand, ³Research and Development Section, Bureau of Occupational and Environmental Disease, Department of Disease Control, Ministry of Public Health, Bangkok, Thailand and ⁴Malaria Division, Department of Disease Control, Ministry of Public Health, Bangkok, Thailand

Email: Somchai Jadsri* - baiyok@yahoo.com; Pratap Singhasivanon - tmpsh@mahidol.ac.th; Jaranit Kaewkungwal - jaranitk@dmc.inet.co.th; Rattana Sithiprasasna - ratanas@afirms.org; Somkiat Siriruttanapruk - somkiatk@health.moph.go.th; Supawadee Konchom - jiabk@yahoo.com

* Corresponding author †Equal contributors

Published: 08 November 2006

Received: 18 June 2006

International Journal of Health Geographics 2006, **5**:48 doi:10.1186/1476-072X-5-48

Accepted: 08 November 2006

This article is available from: <http://www.ij-healthgeographics.com/content/5/1/48>

© 2006 Jadsri et al; licensee BioMed Central Ltd.

This is an Open Access article distributed under the terms of the Creative Commons Attribution License (<http://creativecommons.org/licenses/by/2.0>), which permits unrestricted use, distribution, and reproduction in any medium, provided the original work is properly cited.

Abstract

Background: Maptaphut Industrial Estate (MIE) was established with a single factory in 1988, increasing to 50 by 1998. This development has resulted in undesirable impacts on the environment and the health of the people in the surrounding areas, evidenced by frequent complaints of bad odours making the people living there ill. In 1999, the Bureau of Environmental Health, Department of Health, Ministry of Public Health, conducted a study of the health status of people in Rayong Province and found a marked increase in respiratory diseases over the period 1993–1996, higher than the overall prevalence of such diseases in Thailand. However, the relationship between the pollutants and the respiratory diseases of the people in the surrounding area has still not been quantified. Therefore, this study aimed to determine the spatial distribution of respiratory disease, to estimate pollutants released from the industrial estates, and to quantify the relationship between estimated pollutants and respiratory disease in the Maptaphut Municipality.

Results: Disease mapping showed a much higher risk of respiratory disease in communities adjacent to the Maptaphut Industrial Estate. Disease occurrence formed significant clusters centred on communities near the estate, relative to the weighted mean centre of chimney stacks. Analysis of the rates of respiratory disease in the communities, categorized by different concentrations of estimated pollutants, found a dose-response effect. Spatial regression analysis found that the distance between community and health providers decreased the rate of respiratory disease ($p < 0.05$). However, after taking into account distance, total pollutant ($p < 0.05$), SO_2 ($p < 0.05$) and NO_x ($p < 0.05$) played a role in adverse health effects during the summer. Total pollutant ($p < 0.05$) and NO_x ($p < 0.05$) played a role in adverse health effects during the rainy season after taking into account distance, but during winter there was no observed relationship between pollutants and rates of respiratory disease after taking into account distance. A 12-month time-series analysis of six communities selected from the disease clusters and the areas impacted most by pollutant dispersion, found significant effects for SO_2 ($p < 0.05$), NO_x ($p < 0.05$), and TSP ($p < 0.05$) after taking into account rainfall.

Conclusion: This study employed disease mapping to present the spatial distribution of disease. Excessive risk of respiratory disease, and disease clusters, were found among communities near Maptaphut Industrial Estate. Study of the relationship between estimated pollutants and the occurrence of respiratory disease found significant relationships between estimated SO_2 , NO_x , and TSP, and the rate of respiratory disease.

Background

Maptaphut Industrial Estate (MIE) was established by the Eastern Sea Board development project as the local area for petrochemical industries for the economic development of the country. The MIE started with a single factory in 1988, increasing to 50 by 1998.

The main air pollutants released from industries in the estate are sulfur dioxide, nitrogen oxides and total suspended particulates. These pollutants can increase respiratory symptoms and impact on the environment [1-3]. In the Maptaphut area, the pollutants negatively affect the health of people residing downwind in the area. This impact on their health was evidenced by frequent complaints of bad odour, which make people living there ill.

In 1994, Walter *et. al.* conducted a hospital-based study in Birmingham and found an association between smoke and sulfur dioxide with hospital admissions for respiratory disease [4]. One year later, they conducted another hospital-based study and found that nitrogen dioxide was significantly associated with hospital admission rates for all respiratory disease in children [5]. In addition Kramer *et. al.* [6] and Heinrich *et. al.* [7] conducted a community based study in Germany and found a similar result that respiratory disease was associated with sulfur dioxide or total suspended particulate.

In 1999, the Bureau of Environmental Health, Department of Health, Ministry of Public Health, conducted a

study of the health status of the people in Rayong Province, by reviewing Report 504 (outpatient disease occurrence) from Rayong Provincial Public Health Office. This temporal study found a marked increase in respiratory system diseases over the years 1993–1996, which was higher in Rayong Province than the overall occurrence of such diseases in Thailand (see figure 1).

However, it is doubtful that the findings from the Bureau of Environmental Health study and the complaints from the people residing in the area indicate conclusively that the estate was responsible. This study, conducted in Maptaphut Municipality, aimed to determine the spatial distribution of respiratory disease and pollutant dispersion across 25 communities, and the relationship between estimated pollutants and occurrence of respiratory disease.

Results

Smoothed relative risk in the communities

Table 1 shows that, the summer rate of respiratory disease in the study area was 56.49 per 1,000 people. The top three highest summer relative risks (RR) and rates were at Takuanaupradoo (RR = 3.38, rate = 190.72/1,000), Mapchalood (RR = 3.16, rate = 178.29/1,000) and Soiraumpattana (RR = 2.28, rate = 128.86/1,000).

The rainy-season rate of respiratory disease, which was higher than summer, was 71.61 per 1,000 people. The top three highest rainy-season risks and rates were at Takua-

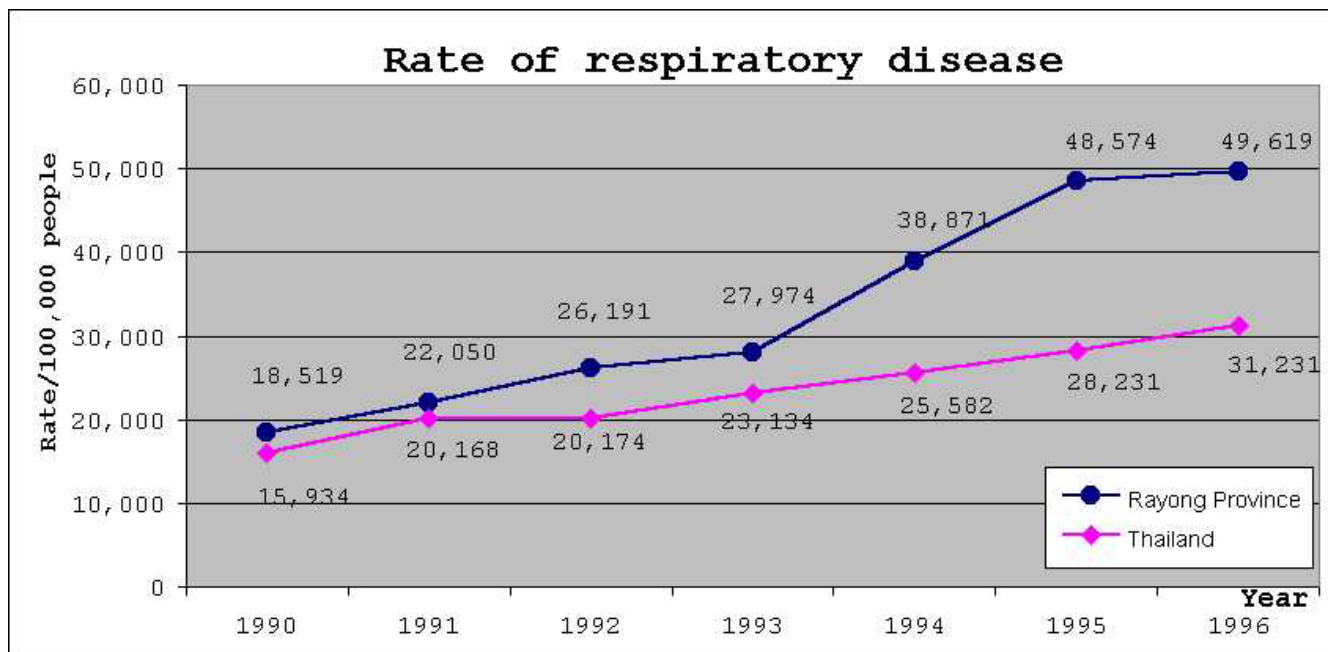


Figure 1
Rate of respiratory diseases in Thailand compared to Rayong province. Blue line indicates rates of respiratory disease of Rayong province. Magenta line indicates rates of respiratory disease of Thailand.

Table 1: Rate and relative risk during summer, rainy season and winter.

| Community | population | Summer | | | Rainy season | | | Winter | | |
|-------------------|------------|--------|--------|---------------|--------------|--------|---------------|--------|--------|---------------|
| | | cases | rate | relative risk | cases | rate | relative risk | cases | rate | relative risk |
| Mapka | 1148 | 26 | 22.72 | 0.40 | 29 | 25.56 | 0.36 | 42 | 36.62 | 0.48 |
| Hauypongnaï | 3127 | 40 | 13.17 | 0.23 | 89 | 28.73 | 0.40 | 114 | 36.65 | 0.48 |
| Nongwaisom | 1235 | 9 | 8.23 | 0.15 | 16 | 13.95 | 0.19 | 14 | 12.35 | 0.16 |
| Baanbon | 1215 | 91 | 74.00 | 1.31 | 103 | 83.70 | 1.17 | 102 | 83.95 | 1.10 |
| Saklookya | 1542 | 58 | 37.72 | 0.67 | 122 | 79.31 | 1.11 | 135 | 87.81 | 1.15 |
| Taladhauypong | 795 | 97 | 120.29 | 2.13 | 153 | 190.57 | 2.66 | 157 | 196.10 | 2.58 |
| Mapya | 1080 | 27 | 25.49 | 0.45 | 44 | 41.35 | 0.58 | 39 | 36.61 | 0.48 |
| Baanplong | 632 | 48 | 75.43 | 1.34 | 54 | 84.62 | 1.18 | 52 | 81.90 | 1.08 |
| Mapchalood | 1050 | 188 | 178.29 | 3.16 | 195 | 185.24 | 2.59 | 238 | 226.57 | 2.98 |
| Baanlang | 1025 | 7 | 7.79 | 0.14 | 21 | 20.55 | 0.29 | 24 | 23.59 | 0.31 |
| Watmaptaphut | 1191 | 38 | 31.96 | 0.57 | 35 | 29.92 | 0.42 | 31 | 26.62 | 0.35 |
| Samnukkabak | 320 | 2 | 7.73 | 0.14 | 3 | 10.43 | 0.15 | 4 | 12.24 | 0.16 |
| Watsopol | 1088 | 76 | 69.77 | 1.24 | 62 | 57.67 | 0.81 | 71 | 66.00 | 0.87 |
| Islam | 875 | 35 | 39.78 | 0.70 | 66 | 75.50 | 1.05 | 109 | 124.00 | 1.63 |
| Kaopai | 830 | 12 | 14.47 | 0.26 | 14 | 16.63 | 0.23 | 4 | 5.12 | 0.07 |
| Kodehin | 1128 | 10 | 9.65 | 0.17 | 10 | 10.08 | 0.14 | 9 | 8.76 | 0.12 |
| Taladmaptaphut | 1191 | 56 | 46.69 | 0.83 | 60 | 50.24 | 0.70 | 29 | 25.05 | 0.33 |
| Soiraumpattana | 1088 | 141 | 128.86 | 2.28 | 155 | 141.27 | 1.97 | 160 | 146.60 | 1.93 |
| Nongnamyen | 537 | 1 | 5.63 | 0.10 | 1 | 6.70 | 0.09 | 1 | 5.80 | 0.08 |
| Klongnamhoo | 476 | 39 | 79.41 | 1.41 | 42 | 84.52 | 1.18 | 34 | 68.09 | 0.89 |
| Nongbaudang | 670 | 1 | 3.65 | 0.06 | 1 | 3.71 | 0.05 | 0 | 2.25 | 0.03 |
| Nongpab | 825 | 67 | 82.17 | 1.46 | 108 | 131.76 | 1.84 | 133 | 160.97 | 2.12 |
| Takuaaupradoo | 1670 | 319 | 190.72 | 3.38 | 396 | 236.65 | 3.31 | 381 | 227.96 | 3.00 |
| Koakoknongtungmae | 473 | 44 | 91.01 | 1.61 | 31 | 63.36 | 0.88 | 56 | 116.30 | 1.53 |
| Krokyaiicha | 457 | 18 | 40.02 | 0.71 | 28 | 61.86 | 0.86 | 15 | 34.44 | 0.45 |

naupradoo (RR = 3.31, rate = 236.65/1,000), Taladhauypong (RR = 2.66, rate = 190.57/1,000) and Mapchalood (RR = 2.59, rate = 185.24/1,000).

The winter rate of respiratory disease, the highest of the three seasons, was 76.13 per 1,000 people. The top three highest winter risks and rates were at Takuaaupradoo (RR = 3.00, rate = 227.96/1,000), Mapchalood (RR = 2.98, rate = 226.57/1,000) and Taladhauypong (RR = 2.58, rate = 196.10/1,000).

Disease mapping and disease clustering

In order to present the magnitude of risk in the communities, the relative risk was arbitrarily grouped into four classes. Relative risk > 2 was considered highest, relative risk 1.5–2.0 was higher, relative risk 1.0–1.5 and < 1.0 were mild and no risk, respectively.

During the summer, the relative risk was > 2 in Takuaaupradoo (3.38), Mapchalood (3.16), Soiraumpattana (2.28), and Taladhauypong (2.23). Relative risk was 1.5–2 in Koakoknongtungmae (1.61). Relative risks were between 1.0–1.5 in Nongpab (1.46), Klongnamhoo (1.41), Baanplong (1.34), Baanbon (1.31) and Watsopol (1.24). In the other communities, the smoothed relative risk was < 1.0.

Spatial local clustering found three significant disease clusters. The 1st, indicated by a red circle, centred on Takuaaupradoo, and by expanding the radius to include Koakoknongtungmae and Nongnamyen ($p < 0.05$); the 2nd, indicated by a yellow circle, centred on Mapchalood, and included Taladhauypong and Watsopol ($p < 0.05$); the 3rd, indicated by a magenta circle, centred on Koakoknongtungmae, and included Nongnamyen and Takuaaupradoo ($p < 0.05$).

Focused cluster analysis found significant clusters near the stack weighted mean centre, indicated by a red star sign ($p < 0.05$), as shown in Figure 2.

During the rainy season, relative risk was > 2 in Takuaaupradoo (3.31), Taladhauypong (2.66), and Mapchalood (2.59). Relative risk was between 1.5–2 in Soiraumpattana (1.97) and Nongpab (1.84). Relative risk was between 1.0–1.5 in Baanplong (1.18), Klongnamhoo (1.18), Baanbon (1.17), Saklookya (1.11) and Islam (1.05). In the other communities, smoothed relative risk was < 1.0.

Disease formed three significant clusters, the 1st, indicated by a red circle, centred on Takuaaupradoo, and included Koakoknongtungmae and Nongnamyen ($p < 0.05$); the

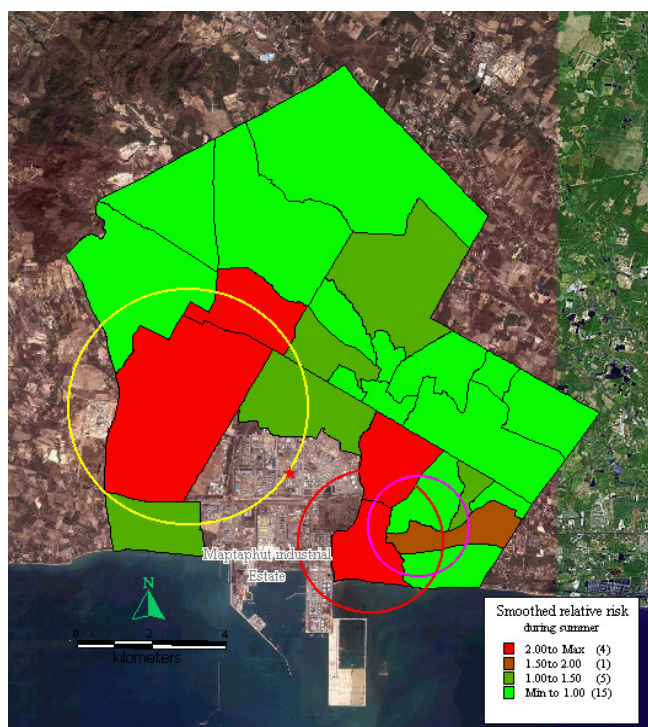


Figure 2
Mapping of smoothed relative risk and disease clusters in the study area during summer. Red circle indicates the first cluster of respiratory disease that includes Takuanaupradoo, Koakoknongtungmae and Nongnamyen. Yellow circle indicates the second cluster of respiratory disease that includes Mapchalood, Taladhauypong and Watsopol. Magenta circle indicates the third cluster of respiratory disease that includes Koakoknongtungmae, Nongnamyen and Takuanaupradoo. Red star sign indicates weighted mean centre of the stacks.

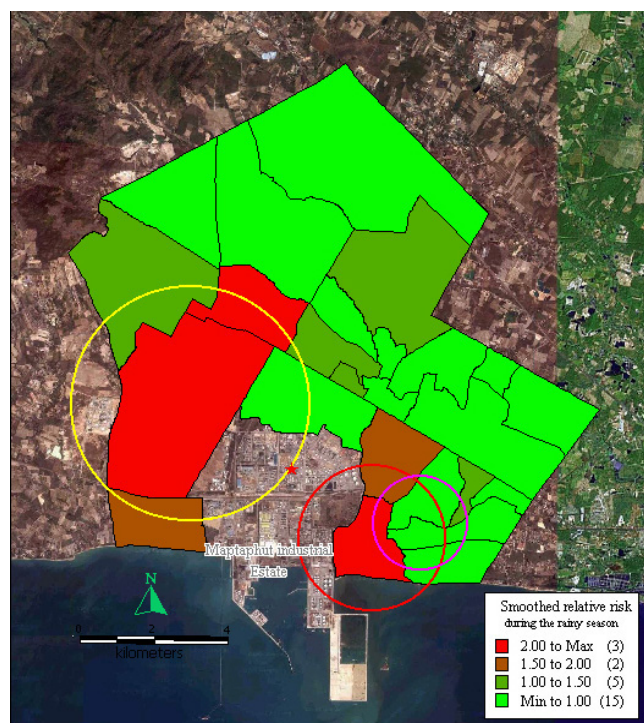


Figure 3
Mapping of smoothed relative risk and disease clusters in the study area during the rainy season. Red circle indicates the first cluster of respiratory disease that includes Takuanaupradoo, Koakoknongtungmae and Nongnamyen. Yellow circle indicates the second cluster of respiratory disease that includes Mapchalood, Taladhauypong and Watsopol. Magenta circle indicates the third cluster of respiratory disease that includes Koakoknongtungmae, Nongnamyen and Takuanaupradoo. Red star sign indicates weighted mean centre of the stacks.

2nd, indicated by a yellow circle, centred on Mapchalood, and included Taladhauypong and Watsopol ($p < 0.05$); the 3rd, indicated by a magenta circle, centred on Koakoknongtungmae, and included Nongnamyen and Takuanaupradoo ($p < 0.05$).

Focused cluster analysis during the rainy season also found a significant cluster near the stack weighted mean centre, indicated by a red star sign ($p < 0.05$), as shown in Figure 3.

During winter, relative risk was > 2 in Takuanaupradoo (3.00), Mapchalood (2.98), Taladhauypong (2.58), and Nongpab (2.12). Relative risk was between 1.5–2 in Soiraumpattana (1.93), Islam (1.63), and Koakoknongtungmae (1.53). Relative risk was between 1.0–1.5 in Saklookya (1.15), Baanbon (1.10) and Baanplong (1.08). In the other communities, smoothed relative risk was < 1.5 .

Disease formed three significant clusters, the 1st, indicated by a red circle, centred on Mapchalood, and included Taladhauypong and Watsopol ($p < 0.05$); the 2nd, indicated by a yellow circle, centred on Takuanaupradoo, and included Koakoknongtungmae and Nongnamyen ($p < 0.05$); the 3rd, indicated by a magenta circle, centred on Nongpab, and included Mapchalood, and Watsopol ($p < 0.05$).

Focused cluster analysis during winter also found a significant cluster near the stack weighted mean centre, indicated by a red star sign ($p < 0.05$), as shown in Figure 4.

Pollutant dispersion

The dispersion of NO_x during summer was highest in southwest Maptaphut Municipality, which included Takuanaupradoo, Mapchalood, and Nongpab, as shown in Figure 5.

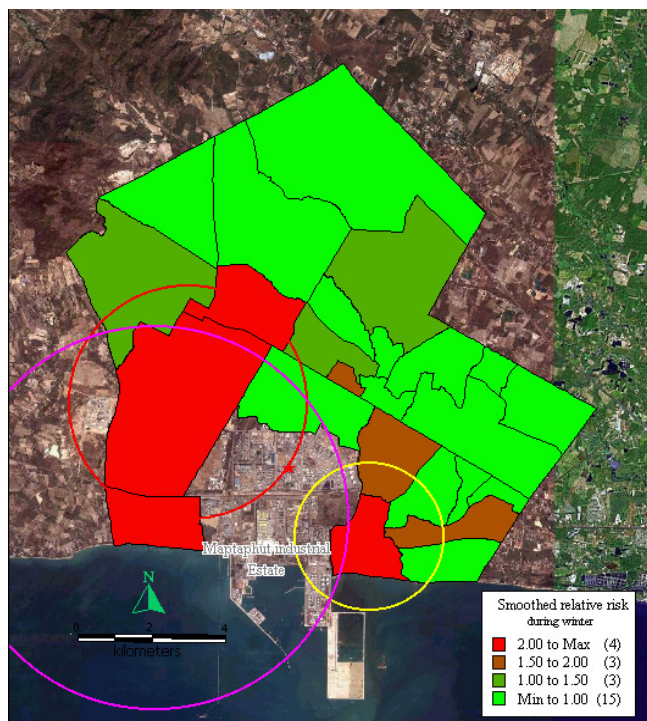


Figure 4
Mapping of smoothed relative risk and disease clusters in the study area during winter. Red circle indicates the first cluster of respiratory disease that includes Mapchalood, Taladhauypong and Watsopol. Yellow circle indicates the second cluster of respiratory disease and includes Takuanaupradoo, Koakoknongtungmea and Nongnamyen. Magenta circle indicates the third cluster of respiratory disease that includes Nongpab, Mapchalood and Watsopol. Red star sign indicates weighted mean centre of the stacks.

The dispersion of NO_x during the rainy season was also highest in southwest Maptaphut Municipality, which includes Takuanaupradoo, Mapchalood, and Nongpab, as shown in Figure 6.

The dispersion of NO_x during winter presented as a large band running through the middle of Maptaphut Municipality, including Takuanaupradoo, Mapchalood, Taladhauypong, Watsopol, Baanplong, and Hauypongnaï, as shown in Figure 7.

The dispersion of SO₂ and TSP during summer, the rainy season, and winter, presented similar patterns to the dispersion of NO_x during the same seasons, as shown in Figure 8, 9, 10, 11, 12, 13.

Relationship between pollutants and disease occurrence

As shown in Table 2, pollutant concentrations were used to classify the communities into four groups. The rate of respiratory disease in the different community groups was

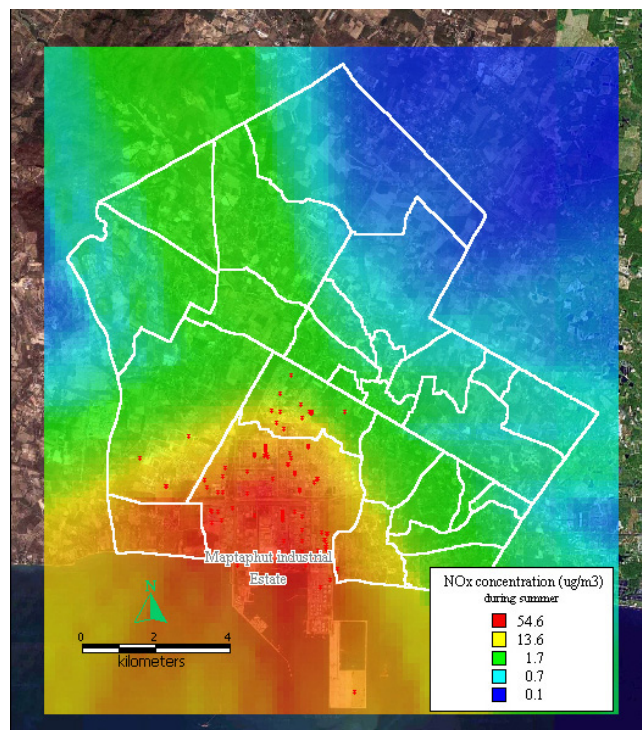


Figure 5
Dispersion of NO_x during summer. Red dots indicate the stacks that released nitrogen oxide.

recalculated and compared with the lowest concentration categories. During summer, the rainy season, and winter, the rates of disease and the pollutant concentrations showed a dose-response effect, where higher rates of disease occurred in communities with higher pollutant concentrations.

As illustrated in Table 3, the effects of total pollutant, NO_x, SO₂ and TSP were analysed by spatial regression analysis and by considering the distance from the communities to hospital and health office. The findings revealed that during summer total pollutant ($p < 0.05$), SO₂ ($p < 0.05$) and NO_x ($p < 0.05$) played a role in adverse health effects, after taking into account the distance from the communities to hospital and health office. During the rainy season, total pollutant ($p < 0.05$) and NO_x ($p < 0.05$) played a role in adverse health effect, after taking into account distance. During winter, no relationship was found between pollutants and rate of respiratory disease, after taking into account distance. However, distances from communities to hospital and health office affected the reported rate of respiratory disease. It decreased the rate of respiratory disease during summer ($p < 0.05$), the rainy season ($p < 0.05$) and winter ($p < 0.05$).

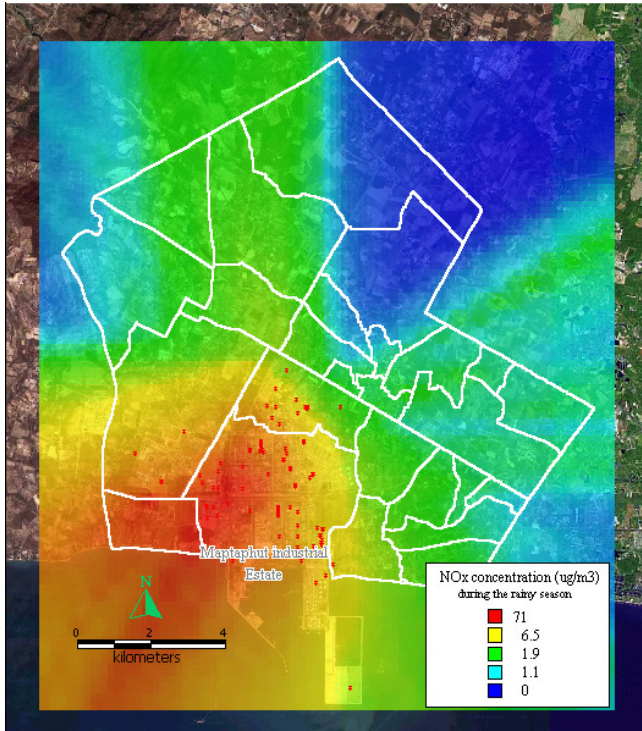


Figure 6
Dispersion of NO_x during rainy season. Red dots indicate the stacks that released nitrogen oxide.

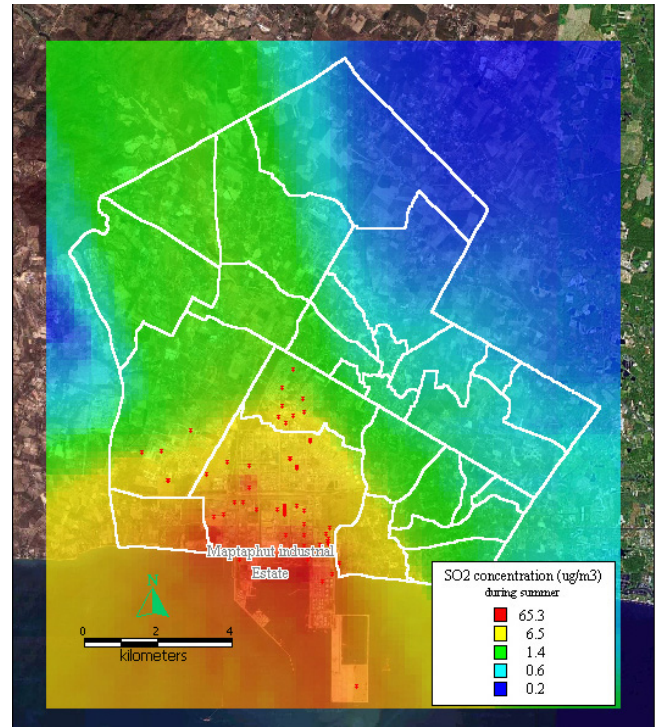


Figure 8
Dispersion of SO₂ during summer. Red dots indicate the stacks that released sulfur dioxide.

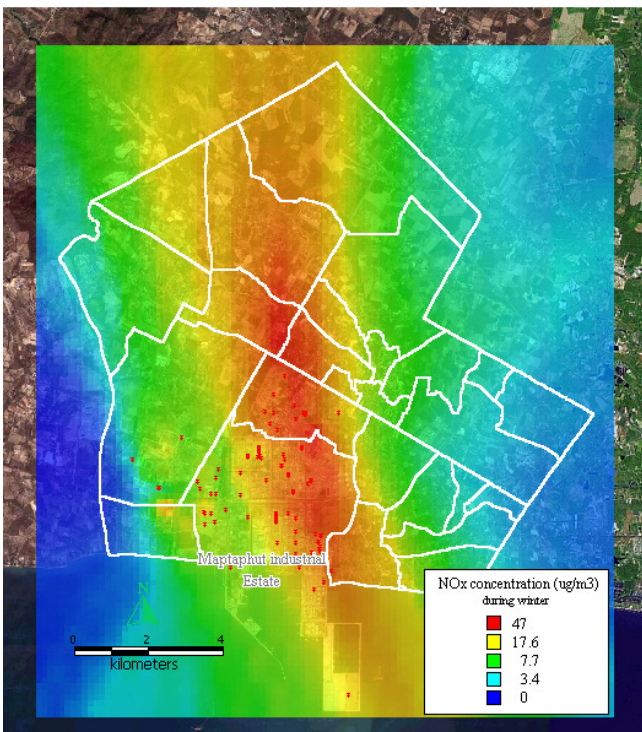


Figure 7
Dispersion of NO_x during winter. Red dots indicate the stacks that released nitrogen oxide.

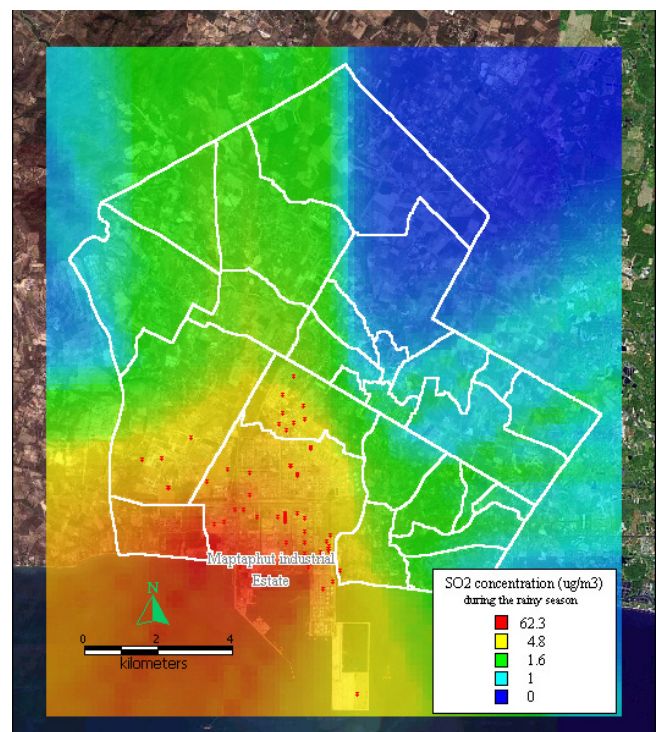


Figure 9
Dispersion of SO₂ during the rainy season. Red dots indicate the stacks that released sulfur dioxide.

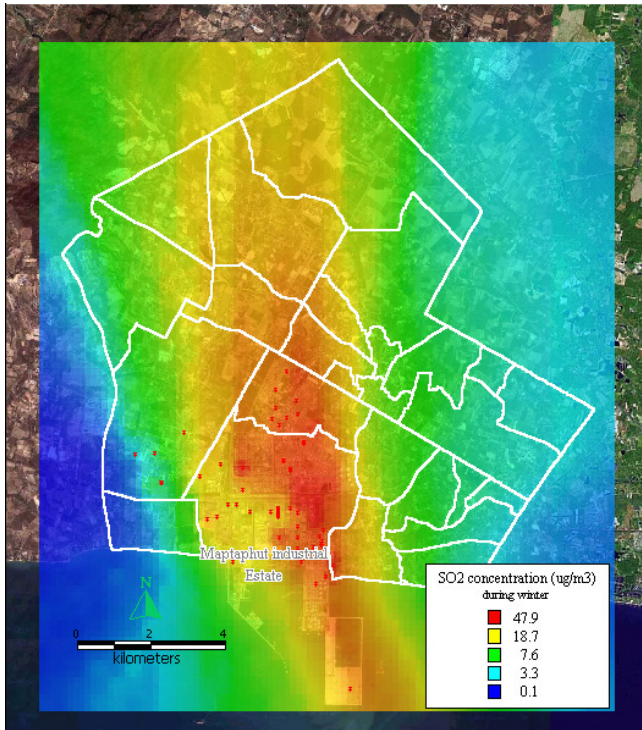


Figure 10
Dispersion of SO₂ during winter. Red dots indicate the stacks that released sulfur dioxide.

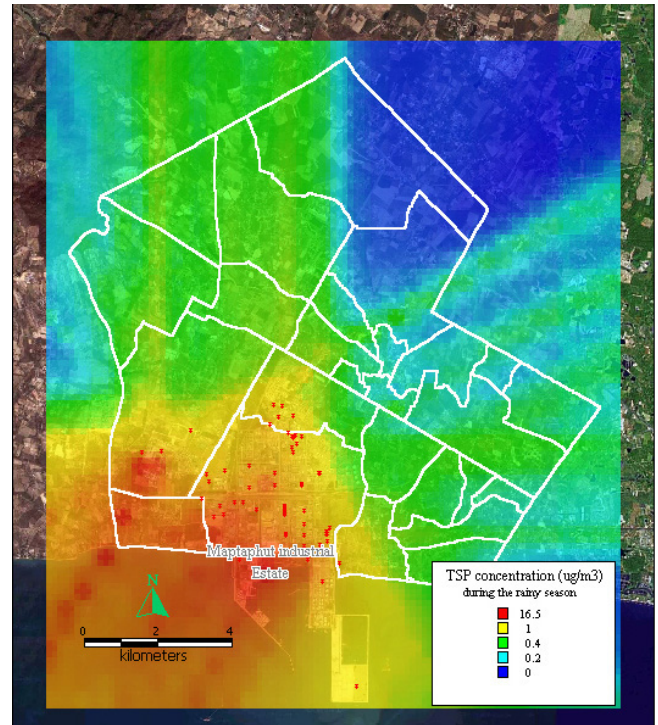


Figure 12
Dispersion of TSP during the rainy season. Red dots indicate the stacks that released total suspended particle.

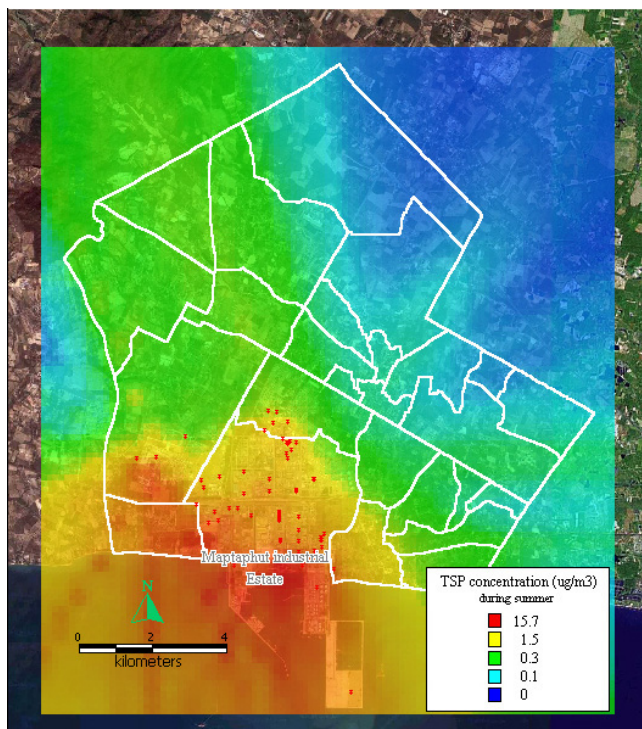


Figure 11
Dispersion of TSP during summer. Red dots indicate the stacks that released total suspended particle.

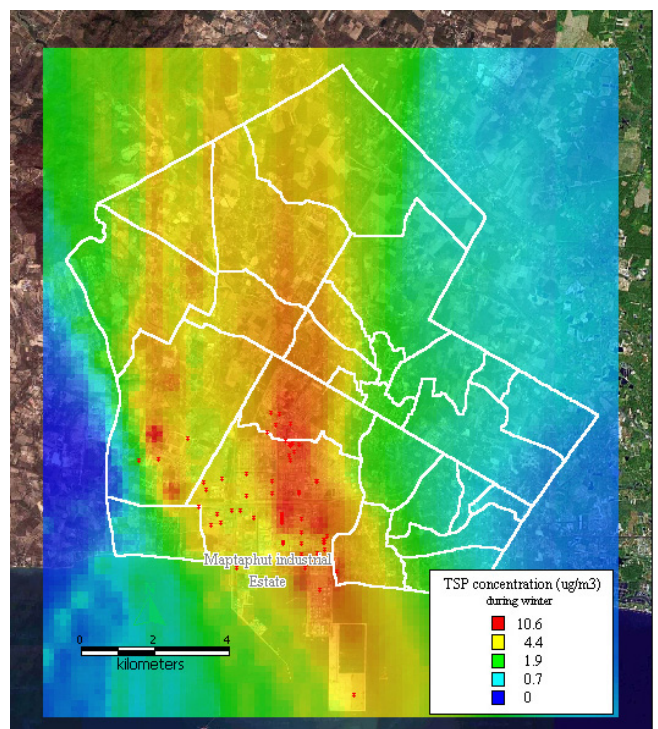


Figure 13
Dispersion of TSP during winter. Red dots indicate the stacks that released total suspended particle.

Table 2: Rate and relative risk in communities grouped by range of pollutants during summer, rainy season, and winter.

| Summer | | | | | |
|---------------------|-------|------------|--------|------|-------------------------------|
| Range of pollutants | Cases | population | Rate | RR | Communities |
| > 4.9 | 650 | 4633 | 140.30 | 5.64 | 22,23,13,9 |
| 2.3–4.9 | 307 | 4048 | 76.33 | 3.07 | 6,24,25,18,3 |
| 1.3–2.3 | 277 | 8380 | 33.15 | 1.33 | 19,2,5,8,20,14,17 |
| < 1.3 | 214 | 8607 | 24.86 | 1.00 | 7,21,11,10,12,15,16,4,1 |
| Rainy season | | | | | |
| Range of pollutants | Cases | population | Rate | RR | Communities |
| > 4.9 | 761 | 4633 | 164.26 | 5.15 | 22,23,13,9 |
| 2.3–4.9 | 527 | 8344 | 63.16 | 1.98 | 6,24,25,18,3,19,8,2 |
| 1.3–2.3 | 369 | 7019 | 52.57 | 1.65 | 10,15,5,14,17,10,7 |
| < 1.3 | 181 | 5672 | 32.91 | 1.00 | 21,12,16,11,4,1 |
| Winter | | | | | |
| Range of pollutants | Cases | population | Rate | RR | Communities |
| > 22.7 | 775 | 7312 | 105.99 | 2.67 | 13,8,6,2,23 |
| 12.0–22.7 | 400 | 4240 | 94.34 | 2.37 | 14,7,3,9 |
| 4.5 – 12.0 | 629 | 10343 | 61.81 | 1.53 | 1,11,5,17,24,18,4,19,25,10,20 |
| < 4.5 | 150 | 3773 | 39.76 | 1.00 | 12,16,22,21,15 |

As shown in Table 4, six communities—Mapchalood, Taladhauypong, Watsopol, Takuanaupradoo, Koakoknongtungmae, and Nongpab—were selected based on clustering and distribution of pollutants during the three seasons. A time series analysis was performed on the selected communities for a one-year period. Previous-day concentrations of total pollutants, after taking into account previous day volume of rainfall, played a non-significant role on rate of respiratory disease per 1,000 people ($p = 0.051$). However, after taking into account previous day volume of rainfall, same-day concentrations of SO_2 affected the rate; a change of 1 microgram per cubic meter changed the rate by 0.0123 ($p = 0.0285$). Previous-day concentrations of NO_x affected the rate of respiratory disease per 1,000 people; a change of 1 microgram per cubic meter changed the rate by 0.0124 ($p = 0.0379$). In addition, previous-day concentration of TSP affected the rate of respiratory disease per 1,000 people; a change of 1 microgram per cubic meter would change the rate by 0.0398 ($p = 0.0262$). Rainfall also had a significant effect on the rate of respiratory disease since it decreased the rate about 0.008 per 1,000 people with every 1 millimetres of previous-day rainfall.

Discussion

The rate of disease was smoothed to correct the stability of any extreme values that might occur in an area with a small population. The relative risk presented the excess

risk in the communities, and aimed to determine areas at risk.

The rate of respiratory disease was lower in summer (56.49/1,000), higher during the rainy season (71.61/1,000), and highest during winter (76.13/1,000). A possible explanation is that during winter, it was colder, and that caused people to contract respiratory diseases directly, and/or the cold weather reduced pollutant dispersion exposing the population to higher concentrations of pollutants in their areas resulting in increased respiratory disease.

Disease clustering was done by using a scan technique, a circular window centred on each community in turn and expanded to include neighbouring regions until the total aggregated population within the window equals a user-defined threshold. In this study, during summer, the circular window was centred at high-rate areas, such as Takuanaupradoo (rate = 190.72) and expanded to include neighbouring regions such as Koakoknongtungmae (rate = 91.01) and Nongnamyen (rate = 5.63) to form the cluster. Nongnamyen was included in the cluster even though the rate of respiratory disease was low. During summer, clusters were located at Takuanaupradoo, Mapchalood, and Koakoknongtungmae. During the rainy season, the clusters were similar to summer, at Takuanaupradoo, Mapchalood and Koakoknongtungmae. During winter,

Table 3: Spatial regression analysis between rates of respiratory disease and pollutant, and the distance from communities to hospital and health office.

| Summer | | | | | | | | | |
|-----------|--------|--------|---------|---------|------------------------|---------|--------|---------|---------|
| pollutant | | | | | pollutant and distance | | | | |
| Variable | Coeff. | SE | z-value | p-value | Variable | Coeff. | SE | z-value | p-value |
| const. | 0.0446 | 0.0080 | 5.6046 | 0.0000 | const. | 0.1045 | 0.0245 | 4.2664 | 0.0000 |
| Pol | 0.0032 | 0.0010 | 3.2337 | 0.0012 | Pol | 0.0028 | 0.0009 | 3.1426 | 0.0017 |
| | | | | | avedis | -0.0126 | 0.0049 | -2.5463 | 0.0109 |
| const. | 0.0534 | 0.0113 | 4.7701 | 0.0000 | const. | 0.1284 | 0.0310 | 4.1427 | 0.0000 |
| TSP | 0.0038 | 0.0051 | 0.7398 | 0.4594 | TSP | 0.0046 | 0.0045 | 1.0106 | 0.3122 |
| | | | | | avedis | -0.0159 | 0.0063 | -2.5507 | 0.0108 |
| const. | 0.0409 | 0.0076 | 5.4068 | 0.0000 | const. | 0.0971 | 0.0232 | 4.1964 | 0.0000 |
| SO2 | 0.0125 | 0.0032 | 3.9006 | 0.0001 | SO2 | 0.0109 | 0.0029 | 3.7228 | 0.0002 |
| | | | | | avedis | -0.0117 | 0.0046 | -2.5233 | 0.0116 |
| const. | 0.0404 | 0.0068 | 5.9647 | 0.0000 | const. | 0.0915 | 0.0211 | 4.3448 | 0.0000 |
| NOx | 0.0084 | 0.0018 | 4.6049 | 0.0000 | NOx | 0.0076 | 0.0017 | 4.5734 | 0.0000 |
| | | | | | avedis | -0.0107 | 0.0042 | -2.5279 | 0.0115 |

| Rainy season | | | | | | | | | |
|--------------|--------|--------|---------|---------|------------------------|---------|--------|---------|---------|
| pollutant | | | | | pollutant and distance | | | | |
| Variable | Coeff. | SE | z-value | p-value | Variable | Coeff. | SE | z-value | p-value |
| const. | 0.0581 | 0.0120 | 4.8358 | 0.0000 | const. | 0.1342 | 0.0341 | 3.9329 | 0.0001 |
| Pol | 0.0026 | 0.0011 | 2.1685 | 0.0301 | Pol | 0.0025 | 0.0011 | 2.2962 | 0.0217 |
| | | | | | avedis | -0.0160 | 0.0068 | -2.3513 | 0.0187 |
| const. | 0.0635 | 0.0144 | 4.4069 | 0.0000 | const. | 0.1464 | 0.0378 | 3.8778 | 0.0001 |
| TSP | 0.0122 | 0.0122 | 1.0007 | 0.3170 | TSP | 0.0150 | 0.0111 | 1.3519 | 0.1764 |
| | | | | | avedis | -0.0177 | 0.0076 | -2.3329 | 0.0197 |
| const. | 0.0624 | 0.0138 | 4.5339 | 0.0000 | const. | 0.1435 | 0.0374 | 3.8353 | 0.0001 |
| SO2 | 0.0036 | 0.0028 | 1.2863 | 0.1984 | SO2 | 0.0037 | 0.0025 | 1.4865 | 0.1371 |
| | | | | | avedis | -0.0172 | 0.0074 | -2.2975 | 0.0216 |
| const. | 0.0521 | 0.0099 | 5.2656 | 0.0000 | const. | 0.1187 | 0.0292 | 4.0626 | 0.0001 |
| NOx | 0.0082 | 0.0023 | 3.5237 | 0.0004 | NOx | 0.0076 | 0.0021 | 3.5958 | 0.0003 |
| | | | | | avedis | -0.0139 | 0.0059 | -2.3935 | 0.0167 |

| Winter | | | | | | | | | |
|-----------|--------|--------|---------|---------|------------------------|---------|--------|---------|---------|
| pollutant | | | | | pollutant and distance | | | | |
| Variable | Coeff. | SE | z-value | p-value | Variable | Coeff. | SE | z-value | p-value |
| const. | 0.0451 | 0.0250 | 1.8020 | 0.0716 | const. | 0.1572 | 0.0633 | 2.4825 | 0.0131 |
| Pol | 0.0021 | 0.0014 | 1.4637 | 0.1433 | Pol | 0.0008 | 0.0015 | 0.4878 | 0.6257 |
| | | | | | avedis | -0.0197 | 0.0103 | -1.9164 | 0.0553 |
| const. | 0.0516 | 0.0250 | 2.0621 | 0.0392 | const. | 0.1611 | 0.0552 | 2.9172 | 0.0035 |
| TSP | 0.0158 | 0.0142 | 1.1112 | 0.2665 | TSP | 0.0074 | 0.0138 | 0.5380 | 0.5906 |
| | | | | | avedis | -0.0205 | 0.0093 | -2.1921 | 0.0284 |
| const. | 0.0390 | 0.0255 | 1.5301 | 0.1260 | const. | 0.1476 | 0.0688 | 2.1450 | 0.0320 |
| SO2 | 0.0058 | 0.0033 | 1.7412 | 0.0817 | SO2 | 0.0023 | 0.0038 | 0.6082 | 0.5430 |
| | | | | | avedis | -0.0184 | 0.0109 | -1.6955 | 0.0900 |
| const. | 0.0510 | 0.0242 | 2.1090 | 0.0350 | const. | 0.1646 | 0.0599 | 2.7473 | 0.0060 |
| NOx | 0.0037 | 0.0030 | 1.2334 | 0.2174 | NOx | 0.0011 | 0.0030 | 0.3609 | 0.7182 |
| | | | | | avedis | -0.0205 | 0.0099 | -2.0542 | 0.0399 |

const. = constant, coeff = coefficient, SE, = standard error, Pol = total pollutant, TSP = total suspended particle, SO2 = sulfur dioxide, NOx = nitrogen oxide, avedis = average distance from community to hospital and health office

Table 4: Time series analysis between rate of respiratory disease and pollutant.

| Variables | Coefficient | Std. Error | T-statistics | p-value |
|----------------------------|-------------|------------|--------------|---------|
| AR | 0.1052 | 0.0527 | 1.9979 | 0.0465 |
| Pollutant _(t-1) | 0.0054 | 0.0028 | 1.9621 | 0.0505 |
| Rain _(t-1) | -0.0081 | 0.0029 | -2.8477 | 0.0047 |
| Constant | 1.2382 | 0.0586 | 21.1162 | 0.0000 |

| Variables | Coefficient | Std. Error | T-statistics | p-value |
|-----------------------|-------------|------------|--------------|---------|
| AR | 0.1113 | 0.0526 | 2.1163 | 0.0350 |
| TSP _(t-1) | 0.0398 | 0.0178 | 2.2307 | 0.0262 |
| Rain _(t-1) | -0.0082 | 0.0028 | -2.8861 | 0.0041 |
| Constant | 1.2523 | 0.0509 | 24.5845 | 0.0000 |

| Variables | Coefficient | Std. Error | T-statistics | p-value |
|-----------------------|-------------|------------|--------------|---------|
| AR | 0.0994 | 0.0528 | 1.8825 | 0.0606 |
| SO _{2(t)} | 0.0123 | 0.0056 | 2.1986 | 0.0285 |
| Rain _(t-1) | -0.0079 | 0.0028 | -2.7681 | 0.0059 |
| Constant | 1.2468 | 0.0526 | 23.7134 | 0.0000 |

| Variables | Coefficient | Std. Error | T-statistics | p-value |
|-----------------------|-------------|------------|--------------|---------|
| AR | 0.1094 | 0.0525 | 2.0829 | 0.0380 |
| NO _{x(t-1)} | 0.0124 | 0.006 | 2.0837 | 0.0379 |
| Rain _(t-1) | -0.008 | 0.0028 | -2.83 | 0.0049 |
| Constant | 1.2272 | 0.0607 | 20.2065 | 0.0000 |

AR = auto-correlation term, pollutant_(t-1) = total pollutant concentration on previous day, rain_(t-1) = rainfall at previous day, TSP_(t-1) = total suspended particle at previous day, SO_{2(t)} = sulfur dioxide at the same day, NO_{x(t-1)} = nitrogen oxide at previous day.

clusters were located at Mapchalood, Takuanaupradoo, and Nongpab.

Disease mapping represented the excess risk of respiratory disease in areas near Maptaphut Industrial Estate during the three seasons. The finding was supported by disease cluster analysis, which found disease formed significant clusters in communities close to the estate ($p < 0.05$). In addition, the disease clusters were related to the weighted mean centre of the chimney stacks that released pollutants into the communities ($p < 0.05$).

Pollutant dispersions were based on both wind speed and wind direction. During summer and the rainy season, pollutants mostly dispersed out to the sea while during winter, pollutants blew and dispersed towards the communities exposing the population to higher concentrations of pollutants than other seasons. Thus rate of respiratory disease was highest during winter.

Spatial analysis was used to determine the relationship of pollutant concentration and rate of respiratory disease in the same community by taking the distance between community and health providers into account. The result

revealed the effect of distance on decreasing the rate of respiratory disease during summer, the rainy season, and winter. During summer, total pollutant ($p < 0.05$), SO₂ ($p < 0.05$) and NO_x ($p < 0.05$) played a role in adverse health effect after taking into account distance. During the rainy season, total pollutant ($p < 0.05$) and NO_x ($p < 0.05$) played a role in adverse health effects, after taking into account distance. However, during winter, no relationship was found between pollutant and rate of respiratory disease, after taking into account distance.

To minimize potential bias, the six communities included in the disease clusters which received the greatest impact from pollutant dispersion, were selected for time-series analysis. The finding revealed that, after taking into account rainfall, the rate of respiratory disease was influenced by the concentration of SO₂ on the same day, or NO_x or TSP on the previous day.

Conclusion

This paper has suggested a technique for analysing spatial data for respiratory disease, and related the rate of respiratory disease to estimated pollutants.

The distribution of disease presents a high excess risk in communities near Maptaphut Industrial Estate. Disease clusters also exist adjacent to the estate and are related to the weighted mean centre of the chimney stacks. The relationship between estimated pollutants and rate of respiratory disease was shown to be significant by using a time-series analysis of the six communities selected by disease clustering, and subject to the greatest impact from pollutant dispersion.

The effects of the pollutants maybe summarized as follows: 1 microgram per cubic meter of SO₂ on the current day could change the rate of respiratory disease per 1,000 people by 0.0123; 1 microgram per cubic meter of NO_x on the previous day could change the rate by 0.0124; 1 microgram per cubic meter of TSP on the previous day could change the rate by 0.0398.

Methods

Study area and data used

Maptaphut Municipality, located in Rayong Province, consists of 25 communities (see Figure 14); the area surrounds the Maptaphut Industrial Estate, where about 228 chimney stacks are located. The main pollutants released by the stacks are sulfur dioxide (SO₂), nitrogen oxides (NO_x), and total suspended particles (TSP).

Medical data

Medical data were obtained from Maptaphut Hospital and Maptaphut Health Office, both located in the study area. Cases of respiratory disease were defined as persons who had resided in Maptaphut Municipality and had presented with any symptom of respiratory disease listed in Chapter 10 of ICD-10 [8]. Medical data from the hospital was coded by medical recording officers, while data from the health office were coded by a well-trained nurse. The case count was recorded daily from 1st March 2000 to 28th February 2001. The medical data was divided into 3 periods—1st March 2000–30th June 2000 (summer), 1st July 2000–31st October 2000 (rainy season), and 1st November 2000–28th February 2001 (winter).

Pollutant source data

The data set was obtained from a report of the study of mathematical modelling in assessing air pollutant problems that impact health in Maptaphut Industrial Estate and surrounding area, which was submitted to the Department of Health, Ministry of Public Health, in 2002. The data included chimney stack locations in Universal Transverse Mercator (UTM) coordinates, level of stack base from average sea level, stack characteristics, i.e., height (meter), diameter (meter), releasing temperature at stack tip (Kelvin), gas velocity at stack tip (meter per second), and amount of pollutants, i.e., TSP, SO₂, NO_x released from stack tip (gram per second).



Figure 14
The Maptaphut Municipality composes of 25 communities. White polygons indicate community boundaries. 1 = Mapka 2 = Hauypongnoi 3 = Nongwaisom 4 = Baanbon 5 = Saklookya 6 = Taladhauypong 7 = Mapya 8 = Baanplong 9 = Mapchalood 10 = Baanlang 11 = Watmaptaphut 12 = Sannukkabak 13 = Watsopol 14 = Islam 15 = Kaopai 16 = Kodehin 17 = Taladmaptaphut 18 = Soiraumpattana 19 = Nongnamyen 20 = Klongnamhoo 21 = Nongbaudang 22 = Nongpab 23 = Takuanaupradoo 24 = Koakoknongtungmae 25 = Krokyacha

Meteorological data

Meteorological data recorded in 2000 and 2001 were obtained from the Department of Meteorology, Bangna, Bangkok. The data included daily rainfall and temperature recorded at the Meteorological Station located in Hauypong community, in the middle of the study area. The data also included wind speed, wind direction and cloud data (Deca) recorded every 3 hours at Rayong Meteorological Centre.

Pollutant data

Estimated pollutant data, obtained by air modelling, included sulfur dioxide (SO₂), nitrogen oxide (NO_x) and total suspended particles (TSP). Two types of pollutant data were estimated as follows.

- Pollutant concentrations were estimated at 500 metre intervals that included 1,184 points of estimation to cover the study area. The estimates were calculated three times

to represent pollutant dispersion during summer, the rainy season and winter. Each point of concentration was used for interpolating and presenting continuous pollutant dispersions using grid analysis by GIS software.

- Daily pollutant concentrations were estimated at the centroid of communities from 1st March 2000 to 28th February 2001. The data was used to determine the relationship between pollutants and disease occurrence.

Methodology

Smoothed rate and smoothed relative risk

Smoothed rate and relative risk was estimated by Bayesian statistics [9-13] by running the following model in WinBUGS [14].

$$O_{[i]} \sim \text{dpois}(\mu_{[i]})$$

$$\log(\mu_{[i]}) <- \log(E_{[i]}) + \alpha_0 + \alpha_1 \cdot X_{1[i]} + \alpha_2 \cdot X_{2[i]} + b_{[i]}$$

$$\text{Rate in area } i = \mu_{[i]} / \text{population in area } i \times 1,000$$

$$\text{Relative risk in area } i = \mu_{[i]} / E_{[i]}$$

Where; $O_{[i]}$ = observed case count in area i

$E_{[i]}$ = expected case count in area i

= (summation of cases \times population in area i) / Total population

$X_{1[i]}$ = Pollutant concentration in area i.

$X_{2[i]}$ = Average distance from hospital and health office to area i.

$b_{[i]}$ = Spatial effect of neighbouring locations of area i

Disease mapping and disease clustering

Global clustering: Besag and Newell's method [15-18].

Local clustering: Turnbull's Method [19]; and constant population size of each circular window was assigned as 2,500 people.

Focused clustering: Score Test of Lawson and Waller [20]; the putative source was estimated from the weighted mean centre of 228 stacks (East 733,469 m North 1,404,378 m).

Pollutant estimation

Pollutant concentrations (NO_x, SO₂ and TSP) were estimated using a Gaussian plume model, by ISCST₃ [21,22] software recommended by USEPA [23]. The model used to estimate pollutant concentration is shown as follows.

$$c = \frac{q}{2\pi u \sigma_z \sigma_y} \exp\left(-\frac{y^2}{2\sigma_y^2}\right) \left[\exp\left(-\frac{(z-h)^2}{2\sigma_z^2}\right) - \exp\left(-\frac{(z+h)^2}{2\sigma_z^2}\right) \right]$$

Where, c = Chemical concentrations at the specified location (g/m³)

q = Rate of chemical emission from stack (g/s)

u = Wind speed at stack terminal (m/s)

σ_y = Standard deviation in y direction or lateral dispersion coefficient (m)

σ_z = Standard deviation in z direction or vertical dispersion coefficient (m)

y = Distance along a horizontal axis perpendicular to the wind

z = Distance along a vertical axis

h = Effective stack height (physical stack height plus plume rise)

Relationship of respiratory disease occurrence and estimated pollutants using spatial regression analysis

Spatial regression analysis was analyzed by GeoDA to determine the relationship between the estimated pollutants that impact the area, and the rate of respiratory disease. The model used for this analysis is as follows:

$$Y_{[i]} = \alpha_0 + \alpha_1 \cdot X_{1[i]} + \alpha_2 \cdot X_{2[i]} + b_{[i]}$$

Where $Y_{[i]}$ is the empirical Bayes smoothed rate of respiratory disease in area i. $X_{1[i]}$ is the pollutant that impacts area i. $X_{2[i]}$ is the average distance from hospital and health office to area i. The α_1 and α_2 are the regression coefficients that represent the effect of X_1 and X_2 on Y respectively. $b_{[i]}$ is the term for spatial autocorrelation and the assumption is made that the rates of respiratory disease in the areas were correlated to each other. The autocorrelation was then adjusted by spatial error in the regression analysis and spatial weight was constructed as Queen types of contiguity.

Relationship of respiratory disease occurrence and estimated pollutants using time-series analysis

A time series was employed to determine the relationship between estimated pollutants and rate of respiratory disease over time, taking autocorrelation into account. The model for this is expressed as follows:

$$Y_{[t]} = \alpha_0 + \alpha_1 \cdot X_{1[t-m]} + \alpha_2 \cdot X_{2[t-n]}$$

$Y_{[t]}$ is the rate of respiratory disease at time t . α_1 and α_2 are regression coefficient represent the effect of X_1 and X_2 . X_1 and X_2 are independent variables such as pollutant and rainfall. The m and n are the lag time of variable X_1 and X_2 respectively.

Conflict of interest

The author(s) declare that they have no competing interests.

Authors' contributions

Authors SJ, PS, JK, RS, SS and SK collaborated intensely on all aspects of the manuscript-research design, data preparation, statistical analysis, and discussion.

Acknowledgements

We would like to thank Mr. Paul Adam and Mr. Philip Kingston for their help with English corrections. We are also extremely grateful to Miss Teechat Boonyakarnkul, Miss Udomlak Sritassanee, Miss Ratchanee Pataisith, Dr. Kanchit Kunavuth, the staff and officials in Rayong Provincial Public Health Office, Maptaphut Hospital, Maptaphut Health Office, Maptaphut Municipality, and the Agri-meteorology Station, Department of Meteorology Bangna, for useful suggestions and facilitating data collection. We especially thank Ms. Chootip Jadsri for help with data receding and word processing.

References

1. **SO₂-How Sulfur Dioxide Affects the Way We Live & Breathe** [<http://www.epa.gov/air/urbanair/so2/index.html>]
2. **NOx-How Nitrogen Oxides Affect the Way We Live and Breathe** [<http://www.epa.gov/air/urbanair/nox/index.html>]
3. **Particulate Matter** [<http://www.epa.gov/air/particlepollution/index.html>]
4. Walters S, Griffiths RK, Ayres JG: **Temporal association between hospital admission for asthma in Birmingham and ambient level of sulphur dioxide and smoke.** *Thorax* 1994, **49(10)**:133-40.
5. Walters S, Phupinyokul M, Ayres JG: **Hospital admission rate for asthma and respiratory disease in the West Midlands: their relationship to air pollutants levels.** *Thorax* 1995, **50(9)**:948-54.
6. Kramer U, Behrendt H, Dolgner R, Ranft U, Ring J, Willer H, Schlipkoter HW: **Airway disease and allergies in East and West German children during the first 5 years after reunification: time trends and the impact of sulphur dioxide and total suspended particle.** *Int J Epidemiol* 1999, **28(5)**:865-73.
7. Heinrich J, Hoelscher B, Frye C, Meyer I, Pitz M, Cyrys , Wjst M, Neas L, Wichmann HE: **Improved air quality in reunified Germany and decreases in respiratory symptoms.** *Epidemiology* 2002, **13(4)**:394-401.
8. *International Statistical Classification of Diseases and Related Health Problems, tenth revision, World Health Organization, Geneva* 2006.
9. Olaf Berke: **Exploratory disease mapping: kriging the spatial risk function from regional count data.** *International Journal of Health Geographics* 2004, **3**:18 [<http://www.ij-healthgeographics.com/content/3/1/18>].
10. Brownstein JS, Holford TR, Fish D: **Enhancing West Nile virus surveillance.** *United States Emerg Infect Dis* 2004 [<http://www.cdc.gov/ncidod/EID/vol10no6/03-0457.htm>].
11. Bernardinelli L, Clayton D, Montomoli C: **Bayesian estimates of disease maps: How important are prior?** *Statistics in Medicine* 1995, **14**:2411-2431.
12. Best NG, Arnold RA, Thomas A, Waller LA, Conlon EM: **Bayesian models for spatially correlated disease and exposure data in Bayesian Statistics.** Edited by: Bernardo JM, Dawid JO, Berger AP, Smith AFM. Oxford University Press; 1999:131-156.
13. Kelsal J, Wakefield J: **Modelling spatial variation in disease risk: A geostatistical approach.** *Journal of the American Statistical Association* 2001, **97**:692-701.
14. **The BUGS Project** [<http://www.mrc-bsu.cam.ac.uk/bugs/>]
15. Besag J, Newell J: **The detection of clusters in rare diseases.** *Journal of the Royal Statistical Society Series A* 1991, **154**:143-155.
16. Waller LA, Turnbull BW, Clark LC, Nasca P: **Spatial pattern analyses to detect rare disease clusters, In Case Studies in Biometry.** Edited by: Lange N, Ryan L, Billard L, Brillinger D, Conquest L, Greenhouse J. New York: John Wiley & Sons; 1994:13-16.
17. Waller LA, Jacquez GM: **Disease models implicit in statistical tests of disease clustering.** *Epidemiology* 1995, **6**:584-90.
18. Le ND, Petkau AJ, Rosychuk R: **Surveillance of clustering near point sources.** *Statistics in Medicine* 1996, **15**:727-740.
19. Turnbull BW, Iwano EJ, Burnett WS, Howe HL, Clark LC: **Monitoring for clusters of disease: Application to leukaemia incidence in upstate New York.** *American Journal of Epidemiology* 1990:136-143.
20. Waller LA, Turnbull BW, Clark LC, Nasca P: **Chronic disease surveillance and testing of clustering of disease and exposure: Application to leukaemia incidence and TCE-contaminated dumpsite in upstate New York.** *Environmetrics* 1992, **3(3)**:281-300.
21. **U.S. Environmental Protection Agency** [http://www.epa.gov/scram001/guidance/guide/appw_03.pdf]
22. **U.S. Environmental Protection Agency** [http://www.epa.gov/scram001/dispersion_alt.htm#isc3]
23. Khan Tran T: **Comparative Use of ISCST3, ISC-Prime and Aeromod in Air Toxic Risk.** [http://www.amiace.com/ace_comp.pdf].
24. **Spatial analysis laboratory** [<http://sal.uiuc.edu>]

Publish with **BioMed Central** and every scientist can read your work free of charge

"BioMed Central will be the most significant development for disseminating the results of biomedical research in our lifetime."

Sir Paul Nurse, Cancer Research UK

Your research papers will be:

- available free of charge to the entire biomedical community
- peer reviewed and published immediately upon acceptance
- cited in PubMed and archived on PubMed Central
- yours — you keep the copyright

Submit your manuscript here:
http://www.biomedcentral.com/info/publishing_adv.asp

