

Chemical Inactivation of Cdc7 Kinase in Budding Yeast Results in a Reversible Arrest That Allows Efficient Cell Synchronization Prior to Meiotic Recombination

Lihong Wan,* Chao Zhang,[†] Kevan M. Shokat[†] and Nancy M. Hollingsworth*¹

*Department of Biochemistry and Cell Biology, SUNY, Stony Brook, New York 11794-5215 and [†]Department of Cellular and Molecular Pharmacology, University of California, San Francisco, California 94158-2280

Manuscript received August 2, 2006
Accepted for publication October 3, 2006

ABSTRACT

Genetic studies in budding yeast have provided many fundamental insights into the specialized cell division of meiosis, including the identification of evolutionarily conserved meiosis-specific genes and an understanding of the molecular basis for recombination. Biochemical studies have lagged behind, however, due to the difficulty in obtaining highly synchronized populations of yeast cells. A chemical genetic approach was used to create a novel conditional allele of the highly conserved protein kinase Cdc7 (*cdc7-as3*) that enables cells to be synchronized immediately prior to recombination. When Cdc7-as3 is inactivated by addition of inhibitor to sporulation medium, cells undergo a delayed premeiotic S phase, then arrest in prophase before double-strand break (DSB) formation. The arrest is easily reversed by removal of the inhibitor, after which cells rapidly and synchronously proceed through recombination and meiosis I. Using the synchrony resulting from the *cdc7-as3* system, DSB-dependent phosphorylation of the meiosis-specific chromosomal core protein, Hop1, was shown to occur after DSBs. The *cdc7-as3* mutant therefore provides a valuable tool not only for understanding the role of Cdc7 in meiosis, but also for facilitating biochemical and cytological studies of recombination.

GENETIC studies in fungi have been highly enlightening with regard to understanding the chromosome mechanics of meiosis. For example, analysis of the patterns of gene conversion events and reciprocal exchanges, in conjunction with gap repair experiments in vegetative cells, led to the development of the double-strand-break (DSB) repair model for recombination. Subsequent studies have shown not only that this model is fundamentally correct for yeast, but also that many aspects of meiotic recombination are conserved throughout evolution (ORR-WEAVER *et al.* 1981; SZOSTAK *et al.* 1983; HOLLINGSWORTH and BRILL 2004). The budding yeast *Saccharomyces cerevisiae* has been a particularly useful model organism for identifying and characterizing genes important for meiosis. Many meiosis-specific recombination genes originally identified in *S. cerevisiae*, such as *SPO11*, *DMC1*, *MSH4*, and *MSH5* and chromosomal core genes such as *HOP1*, are present in other species and play similar roles in meiosis (VILLENEUVE and HILLERS 2001).

Whereas the genetics of meiosis in budding yeast is highly sophisticated, biochemical studies have lagged behind, in large part due to the difficulty of obtaining highly synchronized cultures of meiotic cells. A major step forward in this direction occurred with the de-

velopment of the fast-sporulating SK1 strain as a tool for meiotic studies (*e.g.*, PADMORE *et al.* 1991; HUNTER and KLECKNER 2001). However, while the degree of synchrony in SK1 meiotic cultures is higher than that observed in commonly used, slow-sporulating yeast strains, it is still not sufficient to precisely delineate one meiotic stage from another. To accomplish this, strains that can be arrested at various points during meiosis must be created and then released to produce synchronous populations of cells, analogous to α -factor arrest in vegetative cells. This article describes a method for synchronizing cells at a critical transition point in meiosis, the onset of meiotic recombination.

Cdc7 is a highly conserved, serine/threonine protein kinase that has been studied extensively for its essential role in the initiation of DNA replication in vegetative cells (SCLAFANI 2000; MASAI and ARAI 2002). Cdc7 encodes the catalytic subunit of the kinase, but for the kinase to be active, it must form a complex with a regulatory protein called Dbf4. At the restrictive temperature, temperature-sensitive (*ts*) alleles of *CDC7* exhibit a unique arrest point in meiosis—after premeiotic S but before recombination and synapsis (SCHILD and BYERS 1978). This arrest can be reversed by lowering the temperature, raising the possibility that Cdc7 inactivation could be used to synchronize cells immediately prior to recombination. Working with *ts* mutants in meiosis is problematic, however, in that wild-type strains fail to undergo meiosis at high temperature. As a result,

¹Corresponding author: 314 Life Sciences Bldg., Department of Biochemistry and Cell Biology, SUNY, Stony Brook, NY 11794-5215.
E-mail: nhollin@ms.cc.sunysb.edu

semipermissive temperatures, which often result in leaky phenotypes (*e.g.*, SHUSTER and BYERS 1989; FORSBURG and HODSON 2000), must be used. An alternative approach for inactivating Cdc7 is therefore necessary. A conditional system using a tetracycline-repressible allele of *DBF4* has recently been published (VALENTIN *et al.* 2005). However, in this system there is a significant lag time between the loss of *DBF4* expression and degradation of the Dbf4 protein and so a clean arrest phenotype prior to recombination was not observed.

In the past few years a chemical genetic approach has been developed to create conditional versions of protein kinases (BISHOP *et al.* 2001). This approach involves enlarging the ATP-binding pocket of the kinase of interest by mutation, thereby allowing specific inactivation of the kinase by the addition of purine analogs to the culture medium. An analog-sensitive (*as*) version of *CDC7*, *cdc7-as3*, was created and analyzed for its meiotic phenotypes. In the presence of inhibitor, *cdc7-as3* strongly resembles *cdc7^{ts}* mutants at the restrictive temperature. DNA replication, while delayed, is completed and cells arrest in prophase. No recombination is observed due to a failure to make DSBs. Removal of inhibitor after DNA replication results in a highly synchronized population of cells that rapidly undergoes DSB formation and repair. Therefore the *cdc7-as3* mutant not only provides an excellent tool for understanding the role of Cdc7 in meiosis, but also may be useful for scientists studying different aspects of recombination in budding yeast.

MATERIALS AND METHODS

Plasmids: *cdc7-as* alleles were created by site-directed mutagenesis of the *CDC7-myc* gene carried in the *URA3* integrating plasmid pJO36 (QuikChange kit, Stratagene, La Jolla, CA) (OSHIRO *et al.* 1999). The *cdc7-as1* allele contains the L120G mutation, *cdc7-as2* contains L120A, and *cdc7-as3* contains L120A V181A.

Strains: All diploids were derived from the SK1 background and have the following genotype: *MATa leu2Δ::hisG his4-x/MATα leu2-K HIS4 ARG4/arg4-Nsp lys2/lys2 hoΔ::LYS2/hoΔ::LYS2 ura3/ura3*. Variations between diploids depends upon which *CDC7* allele is present: NH457F, *CDC7-myc*; NH450F, *cdc7-myc-as1*; NH451F, *cdc7-myc-as2*; and NH452F, *cdc7-myc-as3*. NH663 and NH664 are isogenic with NH457F and NH452F, respectively, and are homozygous for *sae2Δ::URA3*.

Construction of *cdc7-as* diploids was done as follows: SK1 diploids containing *CDC7-myc* and *cdc7-as-myc* were constructed by two-step gene replacement (ROTHSTEIN 1991). Because initially it was unknown whether the *cdc7-as* mutants would cause a phenotype in the presence of an inhibitor, the strain construction was designed to integrate the *cdc7-as* plasmids adjacent to a deletion of *CDC7* so that only pop-out events that left the *cdc7-as* allele in the chromosome were able to produce viable FOA^r colonies. First, one copy of *CDC7* was substituted with the *kanMX4* gene in the diploid NH144 using polymerase chain reaction (LONGTINE *et al.* 1998). Second, pJO36 and its mutant derivatives were digested with *EcoRI*, which cuts in sequences downstream of the *CDC7* open reading frame, and transformed into the *CDC7/cdc7Δ* heterozygote. Transformants in which the plasmid integrated adjacent

to *cdc7Δ::kanMX* were identified by sporulating the diploids, dissecting tetrads, and picking spore colonies that were both Ura^r and G418^r. Finding such colonies demonstrated that the *cdc7-as* mutants were able to complement the vegetative growth defect of *cdc7Δ*. The spore colonies were grown in YPAD (2% Bacto-peptone, 1% yeast extract, 0.002% adenine) and plated onto medium containing 5-fluoroorotic acid to select haploid strains that had lost the *cdc7Δ* allele, leaving only *cdc7-as* behind. Haploids of opposite mating type were then crossed to make homozygous *cdc7-as* diploids. *SAE2/COM1* was substituted with *sae2Δ::URA3* using pME1220 (WOLTERING *et al.* 2000) in the haploid parents of NH457F and NH452F to make NH663 and NH664, respectively.

Inhibitors: Stocks of 10 mM PP1 [4-amino-1-tert-butyl-3-(*p*-methylphenyl)pyrazolo [3,4-*d*]pyrimidine] and 1-NM-PP1 [4-amino-1-(*tert*-butyl)-3-(1'-naphthylmethyl)pyrazolo [3,4-*d*]pyrimidine] were synthesized at the University of California at San Francisco as described in BISHOP *et al.* (1999).

Sporulation assay: Diploids were grown in YPA (2% Bacto-peptone, 1% yeast extract, 2% potassium acetate) to a density of 3×10^7 cells/ml and transferred to 2% potassium acetate. Five 1-ml aliquots of cells were placed into test tubes and the appropriate amount of inhibitor was added. The cells were incubated on a roller at 30° for 24 hr. Sporulation was assayed by phase-contrast light microscopy. Cells exhibiting both immature and mature asci were counted as having sporulated. A total of 200 cells were examined for each time point.

Time courses: Cells were sporulated in 2% potassium acetate at 30° as described in DE LOS SANTOS and HOLLINGSWORTH (1999). Flow cytometry was performed by fixing 3 ml of sporulating cells with 70% ethanol overnight at 4°. All solutions contained 5 mM EDTA. The cells were washed once in 50 mM Tris-HCl, pH 8, resuspended in 0.5 ml of the same solution containing 1 mg/ml freshly prepared RNase (Sigma, St. Louis), and incubated at 37° for at least 2 hr. After pelleting, the cells were resuspended in 200 μl of pepsin solution (0.5% HCl, 5 mg/ml pepsin) (Sigma) and incubated for 60 min at 37°. The pepsin was neutralized by the addition of 1 ml 50 mM Tris-HCl, pH 8. The cells were pelleted and resuspended in 0.5 ml 50 mM Tris-HCl, pH 7.5. Fifty microliters of cells were diluted into 1 ml 50 mM Tris-HCl containing 1 μM Sytox Green (Molecular Probes, Eugene, OR). Samples were sonicated briefly prior to being analyzed. DNA content analysis was performed at the Flow Cytometry Core Facility (SUNY, Stony Brook, NY). DSBs were examined at the naturally occurring *YCR048w* hotspot as described in WOLTERING *et al.* (2000). DSB formation was quantitated using a Molecular Dynamics Phosphorimager and ImageQuant 1.11 software. Hop1 immunoprecipitation and detection were performed as described in DE LOS SANTOS and HOLLINGSWORTH (1999). Meiotic progression was monitored by fixing the cells in 3.7% formaldehyde and staining them with 4',6-diamidino-2-phenylindole (DAPI). Binucleate cells have completed meiosis I (MI) and tetranucleate cells have completed meiosis II (MII). All time courses were repeated at least three times, except for the *sae2Δ* experiment that was done twice.

Washout protocol: To wash out the PP1, 100 ml of sporulating culture was divided between two 50-ml conical tubes and cells were pelleted by a 3-min spin in a table top centrifuge. Each pellet was then resuspended in 50 ml of 2% potassium acetate. This procedure was repeated for a total of six spins. After the final spin, the cells were pooled and resuspended in 80 ml of 2% potassium and returned to the 30° shaker.

RESULTS

Mutation of the ATP-binding pocket of *CDC7* creates *as* alleles: Mutations that increase the size of the

ATP-binding pocket of Cdc7 were introduced by substituting leucine at position 120 with either glycine (L120G) or alanine (L120A). In addition, a L120A V181A double-mutant allele was generated on the basis of the rationale proposed by WEISS *et al.* (2000) that large amino acids present immediately upstream of the conserved DFG motif in the kinase may interfere with binding of the inhibitor, PP1, and its derivatives. To monitor meiosis and sporulation, the *cdc7-as* alleles were introduced into the efficiently sporulating SK1 strain background as described in MATERIALS AND METHODS. Diploids containing *CDC7-myc*, *cdc7-L120G-myc*, *cdc7-L120A-myc*, and *cdc7-L120A V181A-myc* (hereafter referred to as *CDC7*, *cdc7-as1*, *cdc7-as2*, and *cdc7-as3*, respectively) were grown to log phase in rich acetate medium and then transferred to sporulation (Spo) medium to induce meiosis. Immediately after transfer to Spo medium, different amounts of the purine analogs, 1-NM-PP1 or PP1, were added to 1-ml aliquots of cells and the cells were incubated on a roller at 30° for 24 hr. Sporulation was then assessed by phase-contrast light microscopy. 1-NM-PP1 had very little effect on sporulation in the wild-type diploid, even when the concentration was 20 μ M. In contrast, all three *cdc7-as* diploids showed a large decrease in sporulation in the presence of 1-NM-PP1 (Figure 1A). However, even at 20 μ M, ~10% asci were observed; therefore, the inhibition of *cdc7-as* by 1-NM-PP1 is incomplete. Addition of 15 μ M PP1 to the *CDC7* diploid reduced sporulation to 69%, indicating that there is a slight general effect of the inhibitor on sporulation (Figure 1A). This effect does not appear to extend to meiosis, as the spores are highly viable (91.3%, 26 asci dissected). The Cdc7-as kinases were differentially sensitive to PP1, depending upon which amino acid was substituted for leucine at position 120. While *cdc7-as1* was resistant to 20 μ M PP1, in the *cdc7-as2* strain sporulation was reduced to 4.5% (Figure 1A). The sensitivity of the L120A substitution was increased by the presence of V181A as *cdc7-as3* produced <1% sporulation with 15 μ M PP1 (Figure 1A).

A second test for sensitivity to PP1 assayed vegetative growth in the presence or absence of inhibitor. *CDC7* and *cdc7-as3* diploids were grown to stationary phase overnight in YPD and then diluted to a density of 10^5 cells/ml. Different concentrations of PP1 were added to 1-ml aliquots of cells that were then returned to the roller and incubated overnight at 30°. Growth was measured by monitoring the optical density at 660 nm. In the absence of inhibitor, both the *CDC7* and the *cdc7-as3* diploids grew to an OD of 1.0 after 24 hr (Figure 1B). For the wild-type diploid, concentrations up to 50 μ M PP1 had little effect. In contrast, growth of the *cdc7-as3* strain was strongly suppressed by addition of PP1, with the maximum decrease occurring above 20 μ M PP1 (Figure 1B). We conclude that, in the SK1 background, PP1 has little to no effect on growth, meiosis, and sporulation of wild-type cells. It should be noted, however,

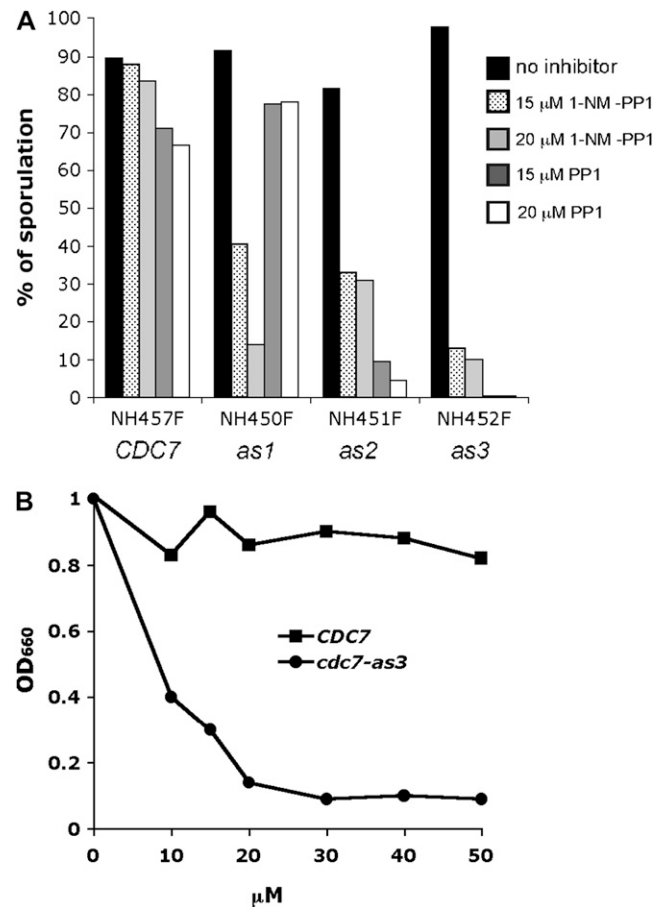
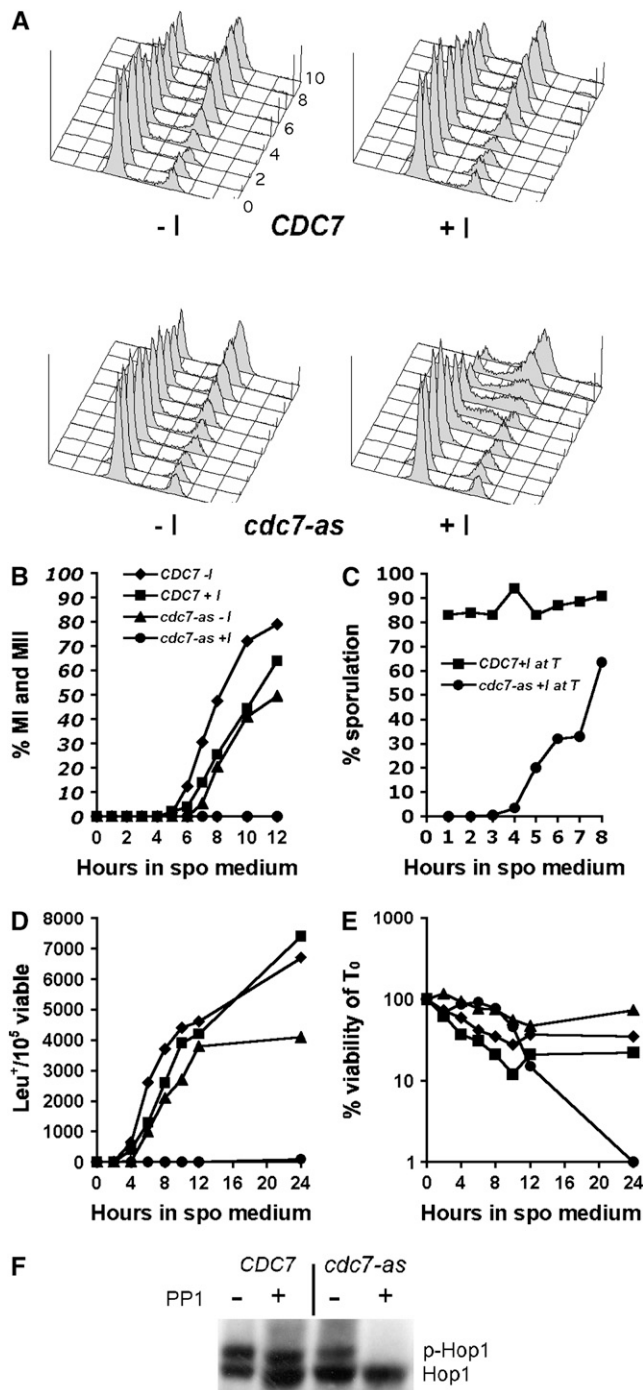


FIGURE 1.—Sporulation and vegetative growth in different *cdc7-as* diploids with various inhibitors. (A) SK1 diploids containing *CDC7* (NH457F), *cdc7-as1* (NH450F), *cdc7-as2* (NH451F), and *cdc7-as3* (NH452F) were sporulated in the presence of the indicated amount of either 1-NM-PP1 or PP1 for 24 hr at 30°. Sporulation was monitored by phase-contrast light microscopy. A total of 200 cells were counted for each condition. (B) Overnight cultures of either NH457F (*CDC7*) or NH452F (*cdc7-as3*) were diluted to 10^5 cells/ml and PP1 was added to aliquots of cells as indicated. After incubation at 30° for 24 hr, growth was measured by determining the absorbance at 660 nm using a spectrophotometer.

that a wild-type strain with a different genetic background is highly sensitive to PP1 and that the *cdc7-as3* mutant in this background exhibited a different pattern of sensitivity, with 1-NM-PP1 being most effective (IRA *et al.* 2004). Therefore the type and amount of inhibitor used to inactivate *cdc7-as3* should be empirically determined for each strain background. In SK1, PP1 inhibition of *cdc7-as3* blocks vegetative growth and exhibits a very tight meiotic arrest with 15 μ M PP1. We therefore characterized the role of Cdc7 kinase activity in meiosis using the *cdc7-as3* allele and the PP1 inhibitor.

Cdc7 kinase activity promotes efficient premeiotic S and functions in prophase to allow recombination and meiotic progression: The requirement for Cdc7 kinase activity during meiosis was examined using time courses of *CDC7* and *cdc7-as3* diploids in which 15 μ M PP1 was added upon transfer to Spo medium. Flow cytometry

was used to monitor DNA replication. DNA content profiles for the *CDC7* diploid with and without PP1 were very similar, with DNA replication starting between 3 and 4 hr after transfer to Spo medium and finishing around 6 hr (Figure 2A). For the *cdc7-as3* diploid without inhibitor, the onset of premeiotic DNA replication was delayed ~ 1 hr and was not completed until 8 hr. Addition of PP1 to *cdc7-as3* cells resulted in a further delay in cells completing S phase, indicated by a significant number of cells between the 2N and 4N peaks (Figure 2A). By 10 hr, however, the bulk of the DNA was replicated.



Addition of PP1 to the *CDC7* diploid caused a 1-hr delay in the onset of the first meiotic division (Figure 2B). A similar delay was observed in the *cdc7-as3* diploid without inhibitor, indicating that the *cdc7-as3* allele is not completely wild type. Chromosome behavior appears to be normal, however, as all three diploids (*CDC7* \pm PP1; *cdc7-as3* $-$ PP1) exhibited $>91\%$ spore viability. In contrast, addition of PP1 to the *cdc7-as3* diploid at time 0 (T_0) completely blocked progression out of prophase (Figure 2B). Detection of several meiosis-specific proteins and microarray analysis demonstrated that the cells were arrested after entry into meiosis (see below; data not shown).

The sporulation defect was used to determine the timing requirement for Cdc7 kinase activity by execution-point analysis. Inactivation of Cdc7-as prior to its time of action should cause cells to arrest, while addition of PP1 after Cdc7-as has phosphorylated its target proteins should have no effect on sporulation. During the time course, 1-ml aliquots of *cdc7-as3* cells were taken at each time point and PP1 was added to a final concentration of $15 \mu\text{M}$. The cells were then returned to the incubator until 24 hr, at which time sporulation was monitored. The *cdc7-as3* cells started to become resistant to PP1 after 4 hr, nearly 2 hr before the first meiotic division (Figure 2C). Therefore the requirement for Cdc7 kinase activity during meiosis is limited to prophase.

Intragenic recombination was monitored in *CDC7* and *cdc7-as3* diploids by the formation of *Leu*⁺ prototrophs. The kinetics of prototroph formation was nearly identical in the *CDC7* diploid plus and minus inhibitor (Figure 2D). In the absence of inhibitor, the *cdc7-as3* mutant exhibited a 1-hr delay in the onset of recombination, with a slight decrease in the total number of *Leu*⁺ prototrophs. In contrast, no intragenic recombination was detected in the *cdc7-as* diploid with PP1 (Figure 2D).

Cdc7 kinase activity is required for DSB formation: During meiosis, recombination is initiated by the introduction of DSBs by the highly conserved, topoisomerase-like protein, Spo11 (KEENEY 2001). To determine

FIGURE 2.—Meiotic time courses of *CDC7* and *cdc7-as3* diploids in the presence or absence of PP1. *CDC7* (NH457F) and *cdc7-as3* (NH452F) diploids were transferred to sporulation medium at which time $15 \mu\text{M}$ PP1 was added to half of each culture and incubated at 30° (+I, with PP1; -I, without PP1). (A) Flow cytometry of cells to monitor DNA content. Time points were taken at 1-hr intervals, starting with 0. The 9-hr time point is not shown. (B) Meiotic progression measured by DAPI staining of nuclei. Bi- and tetra-nucleate cells have completed MI and MII, respectively. (C) Execution-point analysis. A total of $15 \mu\text{M}$ PP1 was added at the indicated time point to an aliquot of cells without PP1 and sporulation was then assessed after a total of 24 hr. (D) Meiotic intragenic recombination at the *leu2* locus was measured by the production of *Leu*⁺ prototrophs normalized to the number of viable cells. (E) Cell viability was measured by determining the number of cells able to grow on rich medium. (F) Hop1 phosphorylation detected by immunoblot analysis at the 6-hr time point. Unphosphorylated Hop1 and phosphorylated Hop1 are indicated by Hop1 and p-Hop1, respectively.

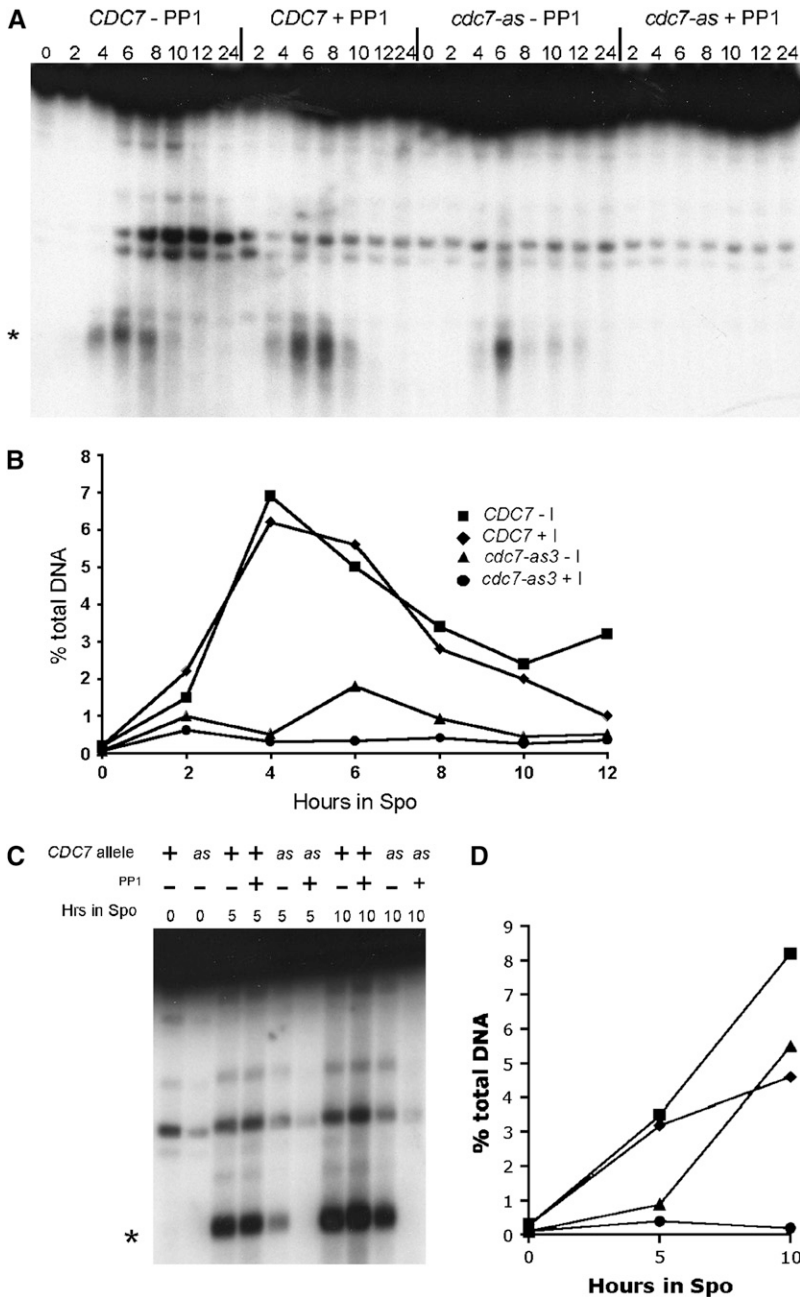


FIGURE 3.—DSBs in *CDC7* and *cdc7-as3* diploids sporulated in the presence or absence of PP1. The indicated diploids were transferred to sporulation medium and 15 μ M PP1 was added to half of each culture and the cells were incubated at 30°. (A) DSBs monitored at the *YCR048w* hotspot (WU and LICHTEN 1994) for the time course shown in Figure 2. Asterisks in A and C indicate the most prominent DSB fragments. (B) Quantitation of DSBs from A. (C) DSBs in *CDC7 sae2Δ* (NH663) and *cdc7-as3 sae2Δ* (NH664) diploids. (D) Quantitation of DSBs from C.

whether the *cdc7-as3* recombination defect is due to a lack of DSBs, DSB formation was monitored at the naturally occurring *YCR048w* hotspot (WU and LICHTEN 1994). Quantitation of DSBs revealed that the kinetics and degree of DSB formation were similar in the *CDC7* diploid both in the presence and the absence of PP1 (Figure 3, A and B). DSBs were detectable but delayed and reduced in the *cdc7-as* strain without inhibitor. In contrast, no DSBs were observed in the *cdc7-as3* strain to which PP1 was added (Figure 3, A and C).

The failure to detect DSBs when *Cdc7-as3* is inhibited could be due either to a defect in DSB formation or, alternatively, to a defect in DSB processing such that the breaks are rapidly degraded or repaired. If the latter

case is true, then preventing DSB resection should increase the number of DSBs detectable by Southern blot analysis. DSBs were therefore examined in strains deleted for *SAE2/COM1*, a gene required for resection of DSBs (MCKEE and KLECKNER 1997; PRINZ *et al.* 1997). *CDC7 sae2Δ* and *cdc7-as3 sae2Δ* diploids were sporulated in the presence or absence of 15 μ M PP1 and time points were taken at 0, 5, and 10 hr. Consistent with the result from the *SAE2* diploid, DSBs accumulated more slowly in the *cdc7-as* mutant without inhibitor, perhaps because of the delay in DNA replication (Figure 3, C and D). After 10 hr, however, the level of DSBs in the *cdc7-as3 sae2Δ* strain was equivalent to the *CDC7 sae2Δ* diploid. No DSBs were observed in the *cdc7-as3 sae2Δ* diploid

with PP1, suggesting that the failure to detect DSBs is due to a failure of initiation, rather than to rapid degradation and/or repair (Figure 3, C and D).

Cdc7 kinase activity is required for phosphorylation of Hop1: *HOP1* and *RED1* encode meiosis-specific phospho-proteins that localize to chromosome cores and are required for wild-type levels of DSBs (SMITH and ROEDER 1997; WAN *et al.* 2004; NIU *et al.* 2005). Red1 and Hop1 protein mobilities were analyzed in the time course shown in Figure 2. Addition of PP1 to *cdc7-as3* had no effect on Red1 phosphorylation (data not shown). In contrast, inactivation of Cdc7-as3 eliminated phospho-Hop1 (Figure 2F). Hop1 is therefore a potential substrate of Cdc7. Alternatively, the lack of Hop1 phosphorylation could be an indirect consequence of Cdc7 inactivation, due to the fact that DSBs are required for generating phospho-Hop1 (NIU *et al.* 2005).

The *cdc7-as3* arrest is reversible and provides a useful system for inducing Spo11-mediated DSBs: SCHILD and BYERS (1978) previously showed that the meiotic arrest caused by temperature-sensitive *cdc7* mutants can be reversed by lowering the temperature. To determine whether the arrest caused by chemical inactivation of Cdc7-as3 is reversible, 1-ml aliquots were taken of *CDC7* and *cdc7-as3* cells to which inhibitor had been added at T_0 in the time course shown in Figure 2. The inhibitor was removed by several washes before being resuspended in Spo medium and returned to the incubator. After 24 hr, sporulation was monitored. When the inhibitor was removed after 1 hr, 68% of the *cdc7-as3* cells sporulated, equivalent to the 70% observed for *CDC7* cells without PP1. Therefore, PP1 can be removed by our washing protocol. The same high level of sporulation (73%) was observed when PP1 was washed out of *cdc7-as3* cells after 8 hr and the spores were 95.2% viable. Therefore the meiotic arrest conferred by the blockage of Cdc7 kinase activity is reversible with no obvious meiotic defects up to 8 hr. However, when PP1 was washed out of the *cdc7-as3* cells after 24 hr, sporulation decreased to 5%, coinciding with a 100-fold decrease in viability (Figure 2E). It may be that after several hours at the *cdc7* arrest, irreversible damage to the DNA occurs, which triggers a second checkpoint that blocks sporulation as well as decreases cell viability.

The reversible nature of the *cdc7-as3* arrest raises the possibility that this system could provide an efficient means for inducing Spo11-mediated DSBs in a synchronized population of cells. This idea was tested by taking *cdc7-as3* cells after 8 hr in Spo medium with PP1, washing out the inhibitor, and monitoring DSB formation and meiotic progression. DSBs appeared within 1 hr after washout of the inhibitor and were repaired within 3 hr (Figure 4A). The length of time between the appearance of DSBs and their repair was significantly shorter in the washout situation compared to *cdc7-as3* diploid without inhibitor (Figure 3). This result sup-

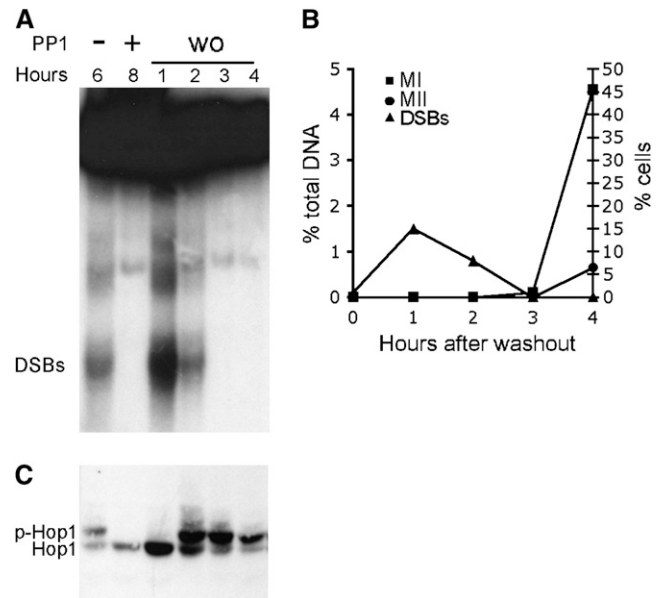


FIGURE 4.—DSBs, Hop1 phosphorylation, and meiotic progression after release of the *cdc7-as3* meiotic arrest. The *cdc7-as3* diploid, NH452F, was transferred to Spo medium at 30° and 15 μ M PP1 was added to half of the culture. After 8 hr, the inhibitor was washed out (wo) and the cells returned to 30°. (A) DSBs at the *YCR048w* hotspot. (B) Quantitation of DSBs in A. (C) Meiotic progression measured by DAPI staining of nuclei. (D) Hop1 was immunoprecipitated and detected on immunoblots using α -Hop1 antibodies. p-Hop1 indicates phosphorylated Hop1. Hours indicates the number of hours in Spo medium or the number of hours after washout.

ports the idea that the lag in DNA repair observed in *cdc7-as3* strains is likely due to poorer synchrony rather than to a defect in recombination *per se*. After washout, the DSBs disappear even more rapidly than in the wild-type situation (*CDC7* without PP1, Figure 3A), where DSBs did not disappear until 8 hr after they were first detected. This result demonstrates that the *cdc7-as3* washout method confers better synchrony than can be obtained by our normal sporulation protocol. Further evidence that the cells are synchronized is the observation that between 3 and 4 hr after washout, nearly 50% of the cells proceeded through the first meiotic division (Figure 4B). Chromosome behavior subsequent to the washout is apparently normal, as the cells exhibited 87% sporulation and 97% spore viability.

Hop1 phosphorylation occurs after DSB formation:

As a proof of principle, the *cdc7-as3* system was used to determine whether DSB formation and Hop1 phosphorylation are temporally distinct events. DSB formation is required for Hop1 phosphorylation, and this phosphorylation is proposed to be important in suppressing sister-chromatid repair during meiosis (NIU *et al.* 2005). The question is whether DSBs and Hop1 phosphorylation occur at the same or different times. Sporulation of a *cdc7-as3* diploid in the absence of PP1 for 6 hr results in both DSBs and phosphorylated Hop1 (Figure 4, A and C). When Cdc7-as3 is inhibited by PP1

for 8 hr in Spo medium, no phosphorylated Hop1 is detected. Although DSBs were formed within 1 hr after removal of PP1, phosphorylated Hop1 was not detected for another hour (Figure 4, A and C). Therefore Hop1 phosphorylation occurs at a discrete period of time after DSB formation.

DISCUSSION

We have used a chemical genetic approach to create a conditional allele of *CDC7*, an essential kinase that has been extensively studied with regard to its role in the initiation of DNA replication in vegetative cells. There are several advantages to the *cdc7-as3* approach. Kinase activity is specifically inactivated by addition of small-molecule inhibitors directly to the sporulation medium. Therefore sporulation can occur at temperatures that are most conducive to meiosis, unlike experiments that use temperature- or cold-sensitive mutants. Mutant phenotypes can be directly attributed to the inability of the kinase to phosphorylate a target protein. Furthermore, there is very little, if any, lag time between addition of inhibitor and inactivation of the kinase, in contrast to the *DBF4* expression shutoff approach, in which it takes 3 hr for the Dbf4 protein to disappear (VALENTIN *et al.* 2005). Finally, the inhibitor is easily removed by washing the cells, making it possible to reverse the *cdc7-as3* arrest and to synchronize cells prior to recombination.

The *cdc7-as3* allele is not completely wild type, as it exhibits some meiotic phenotypes even in the absence of inhibitor. Premeiotic S is delayed, as is DSB formation, perhaps because the two processes are normally coupled in meiosis (see below). DSBs are reduced in *cdc7-as3* diploids without inhibitor, in part perhaps because of a greater degree of asynchrony compared to wild type. When DSBs are prevented from repairing by *sae2*, *cdc7-as3* diploids accumulate wild-type levels of breaks, arguing that initiation is not affected by the *as3* mutation. Furthermore, the spore viability of *cdc7-as3* is as high as wild type. Therefore if there is a reduction in breaks, the reduction is above the threshold required for effective chromosome segregation (HENDERSON and KEENEY 2004).

The phenotypes of the *cdc7-as3* mutant in the presence of inhibitor are highly similar to those observed by SCHILD and BYERS (1978) for *cdc7^{ts}* diploids. In both cases, cells arrest after premeiotic S. Given that *CDC7* is essential for DNA replication in vegetative cells, the finding that *cdc7^{ts}* diploids undergo premeiotic S was unexpected (SCHILD and BYERS 1978; HOLLINGSWORTH and SCLAFANI 1993). One explanation for this paradox is that *CDC7* is required for premeiotic DNA synthesis but not all of the temperature-sensitive kinase is inactivated at the restrictive temperature. This situation was previously observed with *ts* mutants of *CDC28*, which arrest in pachytene after premeiotic S and recombination (SHUSTER and BYERS 1989). Using a chemically

inhibitable form of the kinase, *cdc28-as1*, BENJAMIN *et al.* (2003) showed that Cdc28 functions at two discrete steps during meiosis: first, in the initiation of DNA replication and, second, in the pachytene-to-MI transition. Blocking DNA replication with *cdc28-as1* required 10 times more inhibitor than the pachytene arrest, supporting the idea that DNA replication is less sensitive to reduced Cdc28 kinase levels than later meiotic events (BENJAMIN *et al.* 2003).

These studies show that despite high concentrations of PP1, premeiotic DNA synthesis still occurs in *cdc7-as3* diploids. Monitoring DNA replication over time using flow cytometry demonstrated, however, that S phase during meiosis is prolonged in the absence of Cdc7 kinase activity, indicating that Cdc7 is necessary to promote efficient premeiotic DNA replication. Our work agrees with a recent study by VALENTIN *et al.* (2005) who found that shutting off transcription of *DBF4* prior to the onset of meiosis greatly delays premeiotic S. Whether Cdc7 is absolutely required for premeiotic DNA synthesis is still unresolved. The replication that occurs in both the *cdc7-as3* and the *DBF4* shutoff experiments could be due to a failure to completely eliminate Cdc7 kinase activity, either by incomplete inhibition of the kinase or by residual amounts of Dbf4 protein. Whether it is essential for DNA replication during meiosis or not, Cdc7 clearly plays a positive role in this process.

cdc7 mutants are defective in recombination. This work shows that this defect is due to a failure to make DSBs. Although other mutants such as *spo11* that fail to make DSBs are proficient in meiotic progression, *cdc7* mutants arrest in prophase (MALONE *et al.* 2004). Therefore *CDC7* plays a role not only in DSB formation but also in enabling the onset of the first meiotic division. The *cdc7-as3* system provides an excellent tool for understanding the multiple roles that Cdc7 kinase activity plays during meiosis.

In addition to being useful for elucidating Cdc7 function itself, the reversible nature of the *cdc7-as3* arrest provides a valuable tool for studying various aspects of meiotic recombination. When inhibitor is removed, Spo11-induced DSBs rapidly appear, indicating that cells are arrested at a step in meiosis immediately prior to DSB formation. The spore viability of cells treated in this way is high, indicating that there are no gross meiotic defects that arise from this protocol. There may, of course, be subtle differences from wild-type meiosis. For example, in budding yeast, initiation of recombination is coupled to DNA replication (BORDE *et al.* 2000). This fact was elegantly demonstrated by experiments in which all of the origins of replication were deleted from one arm of chromosome III. Replication on this arm was delayed as expected, given that the fork had to travel from a single origin along the length of the arm. DSBs were correspondingly delayed, suggesting that breaks do not happen until after the replication fork has passed. An interesting question, therefore, is what effect

uncoupling replication from recombination has on the distribution of DSBs in the *cdc7-as3* cells. Understanding the answer to this question may help in understanding how the processes are coupled in the first place.

Being able to synchronously induce Spo11-mediated DSBs in budding yeast has a variety of potential applications. For example, this system allows one to monitor the localization and/or modification state of proteins before and after DSB formation. Using the synchrony conferred by *cdc7-as3*, we have shown that not only is Hop1 phosphorylation dependent upon DSBs, but also there is a lag between break formation and phosphorylation. This finding suggests that the kinase responsible for phosphorylating Hop1 is not part of the DSB machinery but may instead need to localize to DSBs before it can phosphorylate Hop1. An advantage with this approach is that the cells are synchronized before and after DSB formation, and it is exactly the same culture of cells that is being monitored in the two different states. Having a highly synchronized population may also enable the detection of transient recombination intermediates using assays such as two-dimensional gel analysis.

We thank Bruce Futcher, Janet Leatherwood, Michael Lichten, Aaron Neiman, Bob Scalfani, Rolf Sternglanz, and David Stuart for helpful discussions and Aaron Neiman for comments on the manuscript. We are grateful to Bob Scalfani for providing the *CDC7-myc* plasmid. This work was supported by National Institutes of Health grants GM50717 to N.M.H. and AI44009 to K.M.S.

LITERATURE CITED

- BENJAMIN, K. R., C. ZHANG, K. M. SHOKAT and I. HERSKOWITZ, 2003 Control of landmark events in meiosis by the CDK Cdc28 and the meiosis-specific kinase Ime2. *Genes Dev.* **17**: 1524–1539.
- BISHOP, A. C., C.-Y. KUNG, K. SHAH, L. WITUCKI, K. M. SHOKAT *et al.*, 1999 Generation of monospecific nanomolar tyrosine kinase inhibitors via a chemical genetic approach. *J. Am. Chem. Soc.* **121**: 627–631.
- BISHOP, A. C., O. BUZKO and K. M. SHOKAT, 2001 Magic bullets for protein kinases. *Trends Cell Biol.* **11**: 167–172.
- BORDE, V., A. S. GOLDMAN and M. LICHTEN, 2000 Direct coupling between meiotic DNA replication and recombination initiation. *Science* **290**: 806–809.
- DE LOS SANTOS, T., and N. M. HOLLINGSWORTH, 1999 Red1p: a *MEK1*-dependent phosphoprotein that physically interacts with Hop1p during meiosis in yeast. *J. Biol. Chem.* **274**: 1783–1790.
- FORSBURG, S. L., and J. A. HODSON, 2000 Mitotic replication initiation proteins are not required for pre-meiotic S phase. *Nat. Genet.* **25**: 263–268.
- HENDERSON, K. A. and S. KEENEY, 2004 Tying synaptonemal complex initiation to the formation and programmed repair of DNA double-strand breaks. *Proc. Natl. Acad. Sci. USA* **101**: 4519–4524.
- HOLLINGSWORTH, R. E., JR., and R. A. SCLAFANI, 1993 Yeast pre-meiotic DNA replication utilizes mitotic origin *ARS1* independently of *CDC7* function. *Chromosoma* **102**: 415–420.
- HOLLINGSWORTH, N. M., and S. J. BRILL, 2004 The Mus81 solution to resolution: generating meiotic crossovers without Holliday junctions. *Genes Dev.* **18**: 117–125.
- HUNTER, N., and N. KLECKNER, 2001 The single-end invasion: an asymmetric intermediate at the double-strand break to double-Holliday junction transition of meiotic recombination. *Cell* **106**: 59–70.
- IRA, G., A. PELLICCIOLI, A. BALIJA, X. WANG, S. FIORANI *et al.*, 2004 DNA end resection, homologous recombination and DNA damage checkpoint activation require CDK1. *Nature* **431**: 1011–1017.
- KEENEY, S., 2001 Mechanism and control of meiotic recombination initiation. *Curr. Top. Dev. Biol.* **52**: 1–53.
- LONGTINE, M. S., A. MCKENZIE, III, D. J. DEMARINI, N. G. SHAH, A. WACH *et al.*, 1998 Additional modules for versatile and economical PCR-based gene deletion and modification in *Saccharomyces cerevisiae*. *Yeast* **14**: 953–961.
- MALONE, R. E., S. J. HARING, K. E. FOREMAN, M. L. PANSEGRAU, S. M. SMITH *et al.*, 2004 The signal from the initiation of meiotic recombination to the first division of meiosis. *Eukaryot. Cell* **3**: 598–609.
- MASAI, H., and K. ARAI, 2002 Cdc7 kinase complex: a key regulator in the initiation of DNA replication. *J. Cell. Physiol.* **190**: 287–296.
- MCKEE, A. H. Z., and N. KLECKNER, 1997 A general method for identifying recessive diploid-specific mutations in *Saccharomyces cerevisiae*, its application to the isolation of mutants blocked at intermediate stages of meiotic prophase and characterization of a new gene *SAE2*. *Genetics* **146**: 797–816.
- NIU, H., L. WAN, B. BAUMGARTNER, D. SCHAEFER, J. LOIDL *et al.*, 2005 Partner choice during meiosis is regulated by Hop1-promoted dimerization of Mek1. *Mol. Biol. Cell* **16**: 5804–5818.
- ORR-WEAVER, T. L., J. W. SZOSTAK, and R. J. ROTHSTEIN 1981 Yeast transformation: a model system for the study of recombination. *Proc. Natl. Acad. Sci. USA* **78**: 6354–6358.
- OSHIRO, G., J. C. OWENS, Y. SHELLMAN, R. A. SCLAFANI and J. J. LI, 1999 Cell cycle control of Cdc7p kinase activity through regulation of Dbf4p stability. *Mol. Cell. Biol.* **19**: 4888–4896.
- PADMORE, R., L. CAO and N. R. KLECKNER, 1991 Temporal comparison of recombination and synaptonemal complex formation during meiosis in *Saccharomyces cerevisiae*. *Cell* **66**: 1239–1256.
- PRINZ, S., A. AMON and F. KLEIN, 1997 Isolation of *COM1*, a new gene required to complete meiotic double-strand break-induced recombination in *Saccharomyces cerevisiae*. *Genetics* **146**: 781–795.
- ROTHSTEIN, R., 1991 Targeting, disruption, replacement and allele rescue: integrative DNA transformation in yeast. *Methods Enzymol.* **194**: 281–301.
- SCHILD, D., and B. BYERS, 1978 Meiotic effects of DNA-defective cell division cycle mutations of *Saccharomyces cerevisiae*. *Chromosoma* **70**: 109–130.
- SCLAFANI, R. A., 2000 Cdc7p-Dbf4p becomes famous in the cell cycle. *J. Cell Sci.* **113**(Pt. 12): 2111–2117.
- SHUSTER, E. O., and B. BYERS, 1989 Pachytene arrest and other meiotic effects of the start mutations in *Saccharomyces cerevisiae*. *Genetics* **123**: 29–43.
- SMITH, A. V., and G. S. ROEDER, 1997 The yeast Red1 protein localizes to the cores of meiotic chromosomes. *J. Cell Biol.* **136**: 957–967.
- SZOSTAK, J. W., T. L. ORR-WEAVER, R. J. ROTHSTEIN and F. W. STAHL, 1983 The double strand-break model for recombination. *Cell* **33**: 25–35.
- VALENTIN, G., E. SCHWOB and F. DELLA SETA, 2005 Dual role of the CDC7-regulatory protein DBF4 during yeast meiosis. *J. Biol. Chem.* **281**: 2929–2934.
- VILLENEUVE, A. M., and K. J. HILLERS, 2001 Whence meiosis? *Cell* **106**: 647–650.
- WEISS, E. L., A. C. BISHOP, K. M. SHOKAT and D. G. DRUBIN, 2000 Chemical genetic analysis of the budding-yeast p21-activated kinase Cla4p. *Nat. Cell Biol.* **2**: 677–685.
- WAN, L., T. DE LOS SANTOS, C. ZHANG, K. SHOKAT and N. M. HOLLINGSWORTH, 2004 Mek1 kinase activity functions downstream of *RED1* in the regulation of meiotic DSB repair in budding yeast. *Mol. Biol. Cell* **15**: 11–23.
- WOLTERING, D., B. BAUMGARTNER, S. BAGCHI, B. LARKIN, J. LOIDL *et al.*, 2000 Meiotic segregation, synapsis, and recombination checkpoint functions require physical interaction between the chromosomal proteins Red1p and Hop1p. *Mol. Cell. Biol.* **20**: 6646–6658.
- WU, T.-C., and M. LICHTEN, 1994 Meiosis-induced double-strand break sites determined by yeast chromatin structure. *Science* **263**: 515–518.