

A simple method for assessing intestinal inflammation in Crohn's disease

J Tibble, K Teahon, B Thjodleifsson, A Roseth, G Sigthorsson, S Bridger, R Foster, R Sherwood, M Fagerhol, I Bjarnason

Abstract

Background and aims—Assessing the presence and degree of intestinal inflammation objectively, simply, and reliably is a significant problem in gastroenterology. We assessed faecal excretion of calprotectin, a stable neutrophil specific marker, as an index of intestinal inflammation and its potential use as a screening test to discriminate between patients with Crohn's disease and those with irritable bowel syndrome.

Methods—The validity of faecal calprotectin as a marker of intestinal inflammation was assessed in 22 patients with Crohn's disease (35 studies) by comparing faecal excretions and concentrations using four day faecal excretion of ¹¹¹indium white cells. A cross sectional study assessed the sensitivity of faecal calprotectin concentration for the detection of established Crohn's disease (n=116). A prospective study assessed the value of faecal calprotectin in discriminating between patients with Crohn's disease and irritable bowel syndrome in 220 patients referred to a gastroenterology clinic.

Results—Four day faecal excretion of ¹¹¹indium (median 8.7%; 95% confidence interval (CI) 7-17%; normal <1.0%) correlated significantly (p<0.0001) with daily (median ranged from 39 to 47 mg; normal <3 mg; r=0.76-0.82) and four day faecal calprotectin excretion (median 101 mg; 95% CI 45-168 mg; normal <11 mg; r=0.80) and single stool calprotectin concentrations (median 118 mg/l; 95% CI 36-175 mg/l; normal <10 mg/l; r=0.70) in patients with Crohn's disease. The cross sectional study showed a sensitivity of 96% for calprotectin in discriminating between normal subjects (2 mg/l; 95% CI 2-3 mg/l) and those with Crohn's disease (91 mg/l; 95% CI 59-105 mg/l). With a cut off point of 30 mg/l faecal calprotectin has 100% sensitivity and 97% specificity in discriminating between active Crohn's disease and irritable bowel syndrome.

Conclusion—The calprotectin method may be a useful adjuvant for discriminating between patients with Crohn's disease and irritable bowel syndrome.

(Gut 2000;47:506-513)

Keywords: inflammatory bowel disease; Crohn's disease; intestinal inflammation; irritable bowel syndrome

Ulcerative colitis and Crohn's disease are chronic inflammatory bowel disorders characterised clinically by periods of well being punctuated by episodes of clinical disease activity. The presence of disease activity is not a major problem and is amenable to sigmoidoscopic visualisation with direct histopathological biopsy examination as the disease is uniform and commences distally. This is not feasible in Crohn's disease because of its variable location and the patchy nature of the inflammation. Clinical¹⁻³ and laboratory (such as erythrocyte sedimentation rate (ESR), C reactive protein (CRP), α_1 antitrypsin, neutrophil elastase, platelet counts⁴⁻⁷) disease activity scores were devised as possible yardsticks of severity for these patients.¹ These are widely used and easily applied,¹⁻³ but laboratory tests in particular are at best non-specific, being abnormal in various non-intestinal diseases.⁵

In an attempt to overcome some of these problems the technique of ¹¹¹indium labelled neutrophils was modified for gastroenterological use. This involves abdominal scintigraphy and four day faecal collection, the latter providing a specific, quantitative, and sensitive measure of intestinal inflammation.⁸⁻¹² Active Crohn's disease (and ulcerative colitis) is characterised by a 10-fold or more increased migration of neutrophils from the circulation to the diseased intestine.^{8,9} It was hoped that the technique could be used in the initial assessment of patients where the differential diagnosis is between Crohn's disease and the irritable bowel syndrome, a non-inflammatory bowel disease which represents a large part of gastroenterological practice. However, the main drawback of the technique for routine use is that it requires special sterile labelling facilities, is costly (about £300/patient), and involves radiation (8.5-17 millisieverts (mSv)) to a dose equivalent to or greater than a barium enema. Furthermore, there are practical problems with obtaining complete faecal collections over four days. For these reasons the use of the ¹¹¹indium neutrophil technique has been limited to only a few research centres.

An alternative approach to assess the presence of intestinal inflammation¹³ is to analyse whole gut lavage fluid¹⁴ or better still quantitate protease resistant neutrophil derived proteins such as elastase¹⁵ or lactoferrin^{16,17} in stool to maintain the non-invasiveness of the procedure. Calprotectin is one such protein. It is

Abbreviations used in this paper: ESR, erythrocyte sedimentation rate; CRP, C reactive protein; CDAI, Crohn's disease activity index.

Department of
Medicine, Guy's,
King's, St Thomas'
Medical School,
London, UK

J Tibble
G Sigthorsson
S Bridger
R Foster
R Sherwood
I Bjarnason

Department of
Gastroenterology,
Nottingham City
Hospital, Nottingham,
UK
K Teahon

Department of
Medicine, Iceland
University Hospital,
Reykjavik, Iceland
B Thjodleifsson

Department of
Medicine, Aker
University Hospital,
Oslo, Norway
A Roseth

Department of
Immunology and
Transfusion, Ullevaal
University Hospital,
Oslo, Norway, and
Aker University
Hospital, Oslo, Norway
M Fagerhol

Correspondence to:
Professor I Bjarnason,
Department of Medicine,
Guy's, King's, St Thomas's
Medical School, Bessemer
Road, London SE5 9PJ, UK.
Email:
ingvar.bjarnason@kcl.ac.uk

Accepted for publication
4 April 2000

largely confined to neutrophils where it accounts for more than 60% of cytosolic protein.¹⁸⁻²⁰ It resists metabolic degradation by intestinal bacteria, being stable in stool for up to one week at room temperature.¹⁸ As it can be measured with ease in faeces it has the potential to be used in a routine screening procedure as an aid to discriminate between normal and inflamed intestines.

A previous study has shown a significant correlation between faecal calprotectin concentration and histological disease activity in colonic biopsies in patients with ulcerative colitis.²⁰ The validity of faecal calprotectin as a marker of acute inflammation in patients with Crohn's disease, where the inflammation is patchy or inaccessible for biopsy sampling, is however unknown. Our studies had three main objectives: (i) to validate the calprotectin method as a surrogate marker of inflammation by comparing faecal excretion (and single stool concentrations) of calprotectin with faecal excretion of ¹¹¹indium white cells in patients with Crohn's disease, (ii) to assess the sensitivity of the method for detecting established Crohn's disease in a cross sectional study, and (iii) to assess in a prospective fashion the sensitivity and specificity of the calprotectin technique in discriminating between normal and Crohn's disease in consecutive patients referred to a gastroenterology outpatient clinic for this purpose.

Subjects and methods

The studies were approved by the local ethics committees at the Iceland University Hospital, Nottingham City Hospital, and King's College Hospital, and were in three parts. The first part validated the calprotectin method by comparing faecal calprotectin excretions in milligrams (one and four days) with excretion of ¹¹¹indium white cells over four days. However, for routine use it would be preferable to analyse single stool specimens rather than complete collections. Therefore, we also assessed the correlation between single stool calprotectin concentrations (mg/l) with ¹¹¹indium faecal excretions. The second part assessed the sensitivity of single stool faecal calprotectin concentrations in

the detection of patients with established Crohn's disease. The third part assessed the potential of single stool faecal calprotectins to distinguish between Crohn's disease and the irritable bowel syndrome in patients specifically referred to a gastroenterological outpatient clinic for this purpose.

COMPARISON OF FAECAL EXCRETION AND CONCENTRATION OF CALPROTECTIN WITH FOUR DAY FAECAL EXCRETION OF ¹¹¹INDIUM WHITE CELLS

Twenty two patients with established Crohn's disease were studied on 35 occasions. They underwent ¹¹¹indium labelling of white cells and individual stools were collected over four days. The four day faecal excretion of ¹¹¹indium white cells (percentage of dose of the labelled cells) was correlated with daily and the total four day faecal excretion of calprotectin (mg) and with single stool calprotectin concentrations (mg/l) in the first morning stool sample on the second day of the study. This provided assessment of the day to day variation in calprotectin excretion as well as the variation in calprotectin concentrations in individual stool samples.

A diagnosis of Crohn's disease was made based on standard criteria²¹ from a combination of radiological, endoscopic, and histopathological investigations as well as the clinical history. The 22 patients (three of whom were studied twice at least six months apart) had active Crohn's disease (defined as a Harvey-Bradshaw score of 5 or more, which corresponds to a modified Crohn's disease activity index (CDAI) score of over 150,^{22,23} or a four point increase or more in the Harvey-Bradshaw disease activity index from baseline in patients that had undergone intestinal surgery²) and 10 repeated the investigations while in clinical remission following treatment. Table 1 shows the demographic details and characteristics of these patients. Patients with serious coexisting cardiovascular, pulmonary, hepatic, renal, or musculoskeletal disease, severe immune deficiency, malignancy, misusing alcohol, or receiving non-steroidal anti-inflammatory drugs were excluded from the

Table 1 Demographic details of patients

Characteristic	Comparative study	Cross sectional study	Prospective study		
			Crohn's disease	Irritable bowel syndrome	Miscellaneous diagnosis
n	22	112	31	159	30
Sex (M/F)	12/10	62/50	13/18	38/121	12/18
Age (y)	49 (32-75)	34 (18-77)	30 (16-72)	39 (16-85)	60 (21-85)*
Disease site					
Small bowel	2	14	1		
Ileum	13	43	14		
Ileocaecal±colon	4	34	11		
Colon	3	21	5		
Prior resections (%)	8 (37)	49 (44)			
Duration of disease (y)	8 (1-22)	11 (0.5-36)			
Treatment					
Prednisolone	3	27			
Sulphasalazine	3	9			
5-aminosalicylic acid	3	46			
Azathioprine	0	33			

Values for age and duration of disease are mean (range).

*Significantly different ($p < 0.0002$) from patients with Crohn's disease and irritable bowel syndrome.

study as these conditions may be associated with intestinal inflammation in their own right.^{24, 25} Also excluded were pregnant women or those at risk of pregnancy and patients with complicated (fistulae, abscesses, or symptomatic intestinal strictures requiring surgery) Crohn's disease.

CROSS SECTIONAL STUDY

One hundred and sixteen patients with established Crohn's disease (separate from the above), using the same diagnostic and exclusion criteria as above, were recruited for the studies. Forty nine (representing about 25% of all patients with Crohn's disease in Iceland) were from the Icelandic study centre and 67 were consecutive patients attending King's College Hospital Gastroenterology Outpatients with active disease or attending for routine follow-up.

Patients underwent documentation of demographic details (table 1), physical examination, and assessment of clinical disease activity using the Harvey-Bradsaw scoring system² (48 also had CDAI measured which is more widely used in America than in Europe, but the two correlate significantly²).

PROSPECTIVE STUDY

We studied 220 consecutive patients, seen between July 1997 and May 1998, referred to a gastroenterology outpatient clinic at King's College Hospital from general practitioners in South London for opinion as to whether they had irritable bowel syndrome or inflammatory bowel disease. None of these patients was included in the above studies. The principal inclusion criteria to this part of the study were that patients had symptoms for at least two months and that at the initial visit to the hospital it was deemed necessary to do an endoscopic and/or intestinal radiological procedure to confirm or exclude inflammatory bowel disease. Therefore, patients with previously diagnosed inflammatory bowel or other intestinal disease were excluded from the study as were those with serious coexisting disease, detailed above in the validation section. Also excluded were patients with intestinal infections (*Giardia lamblia*, *Campylobacter jejuni*, *Salmonella*, *Shigella*, *Yersinia*) that were specifically sought for in three faecal samples in patients with diarrhoea at the discretion of the gastroenterologist. Patients with coexisting non-intestinal inflammatory diseases (rheumatoid arthritis, sarcoidosis, infections, etc) that are commonly associated with elevated ESR or CRP were excluded. Also excluded from the study were

patients in whom ulcerative colitis was seen on sigmoidoscopy and confirmed on biopsy. The reason for excluding these patients is that they do not normally pose a diagnostic problem and a screening test is therefore unlikely to be required or helpful.

Patient demographic details are shown in table 1. All patients had a full medical history taken with a physical examination. Each patient was evaluated by documentation of the ROME criteria (shown in table 2), which has been suggested as a guide for the clinical diagnosis of irritable bowel syndrome,^{26, 27} and ESR and CRP were measured as part of routine gastrointestinal investigations. All patients had a full blood count, biochemical screening tests (electrolytes, thyroid, liver, and renal profiles), and sigmoidoscopy.

Small intestinal radiology (small bowel follow through (n=94) or enteroclysis (n=24)) was performed in 118 patients. A barium enema was done in 78 patients. Upper gastrointestinal endoscopy was performed in 57 and colonoscopy in 148 patients. All patients had radiology and/or colonoscopy but the particular investigation and other investigations, such as abdominal ultrasound and CT scans, depended on the patient's symptoms as well as the physician's judgement. Each patient provided a faecal sample for calprotectin estimation within a week of the first visit to the outpatient clinic, which was analysed without knowledge of clinical details. The four gastroenterologists that participated in this part of the study were unaware of the faecal calprotectin result throughout the study.

A diagnosis of Crohn's disease was made on the same basis as that of the other patients with Crohn's disease in this study.²¹ The final diagnosis of the irritable bowel syndrome was made on the basis of no significant haematological or biochemical abnormality and normal radiology or endoscopy with biopsy. Other diseases were diagnosed using generally accepted conventional criteria.

¹¹¹INDIUM LABELLED NEUTROPHIL STUDIES

Neutrophils were isolated by sedimentation and centrifugation, and labelled with ¹¹¹indium using tropolone as an ionophore, as previously described.²⁸ Labelling efficiency averaged 88% (range 80–97%). Abdominal scintigrams were obtained at 1–4 hours and 24 hours to establish disease location. After injection of the cells, individual stool collections were made into plastic containers over a four day period for estimation of ¹¹¹indium activity and calprotectin. Each sample was counted in a high resolution bulk sample counter together with standards for 20–60 seconds, which permits measurement of less than 0.01% of the injected dose with a counting accuracy of ±4%. The normal range of faecal excretion of ¹¹¹indium over four days (median 0.41%, 95% confidence interval (CI) 0.22–0.81%, with an upper limit (+2SD) of 0.98%) had been established previously in 22 healthy subjects (mean age 38 years (range 20–65)).²⁸ Assuming that an 11 MBq dose of ¹¹¹indium labelled neutrophils is injected into the patient, the estimated radia-

Table 2 ROME diagnostic criteria for irritable bowel syndrome

At least three months of continuous or recurrent symptoms of one of the following:
Abdominal pain or discomfort
(1) Relieved by defecation
(2) Associated with a change in frequency of stool
(3) Associated with a change in consistency of stool
Two or more of the following, at least on 25% of occasions or days
(1) Altered stool frequency: more than 3 bowel movements/day or less than 3 bowel movements/week
(2) Altered stool form (lumpy/hard or loose/watery)
(3) Altered stool passage (straining/urgency/feeling of incomplete evacuation)
(4) Passage of mucus
(5) Bloating or feeling of abdominal distension

tion dose received is 8.5 mSv (effective dose equivalent).

CALPROTECTIN MEASUREMENT

On completion of $^{111}\text{indium}$ counting, or on receiving the specimens from subjects in the cross sectional and prospective studies, stools were weighed and a proportion was frozen and stored at -20°C . After thawing, 5 g aliquots were suspended in extraction buffer and calprotectin levels were quantitated using an ELISA method as previously described.¹⁸

The normal range of faecal calprotectin excretion and concentration was established in 56 healthy subjects (31 males, 25 females, mean age 41 years (range 18–77); 21 from Iceland and 35 from King's) during the study. Normal median daily faecal excretion of calprotectin is 0.9 mg with an upper limit (+2SD) of 3 mg. Median calprotectin concentrations were 2 mg/l (95% CI 2–3 mg/l) with an upper limit (+2SD) of 10 mg/l. The within assay coefficient of variation was 1.2% and between assay variation 15%.

STATISTICS

Statistical analysis was performed using Analyse-It medical statistics addition to Microsoft Excel. A "Shapiro-Wilks W" prime test showed that the four day faecal excretion of $^{111}\text{indium}$ and faecal calprotectin concentrations from controls were normally distributed while most of the other data were not. Values are therefore presented as median and 95% confidence intervals (CI). The upper normal limits for the four day faecal excretion of $^{111}\text{indium}$ and calprotectin (excretion and concentrations) were defined as mean+2SD. The Mann-Whitney test was used to assess differences in laboratory parameters between groups and Spearman's correlation coefficient was used to assess correlations. Receiver operating characteristics (sensitivity and specificity) were assessed by curve analysis as described by Henderson.²⁹

Results

COMPARISON OF FAECAL EXCRETION AND CONCENTRATION OF CALPROTECTIN WITH FOUR DAY FAECAL EXCRETION OF $^{111}\text{INDIUM}$ WHITE CELLS

Figure 1 shows that four day faecal excretion of $^{111}\text{indium}$ white cells (median 8.7%; 95% CI 7–17%; normal <1.0%) from the 22 patients with Crohn's disease tested on 35 occasions correlated significantly ($r=0.80$; $p<0.001$) with the cumulative four day faecal excretion of calprotectin (median 101 mg; 95% CI 45–168 mg; normal < 11 mg). Furthermore, the correlation between daily faecal calprotectin excretion (median 39, 43, 47, and 41 mg on days 1–4, respectively; normal <3 mg) and the four day faecal excretion of $^{111}\text{indium}$ was maintained ($r=0.75$ – 0.83 ; $p<0.001$). The median coefficient of variation between daily faecal excretion of calprotectin in these patients was 29% (95% CI 14–79%).

The total four day faecal excretion of calprotectin (median 101 mg) correlated significantly ($r=0.85$; $p<0.0001$) with single stool calprotectin concentrations (median 118 mg/l; 95% CI 36–175 mg/l). Furthermore, fig 1 shows that the four day faecal excretion of $^{111}\text{indium}$ neutrophils and single stool calprotectin concentrations correlated significantly ($r=0.70$; $p<0.001$). The median coefficient of variation in calprotectin concentrations in the first morning stool over the four days was 54% (95% CI 21%–94%) with the greatest variability at the lower concentrations.

CROSS SECTIONAL STUDY

There were no significant differences in demographic details between patients in Iceland and the UK. Figure 2 shows that faecal calprotectin concentrations from 116 patients with Crohn's disease (91 mg/l; 95% CI 59–105 mg/l) differed significantly ($p<0.0001$) from controls (2 mg/l; 95% CI 2–3 mg/l). Only four (3.4%) patients with Crohn's disease had calprotectin concentrations within the normal range. These were patients that had undergone multiple intestinal resections.

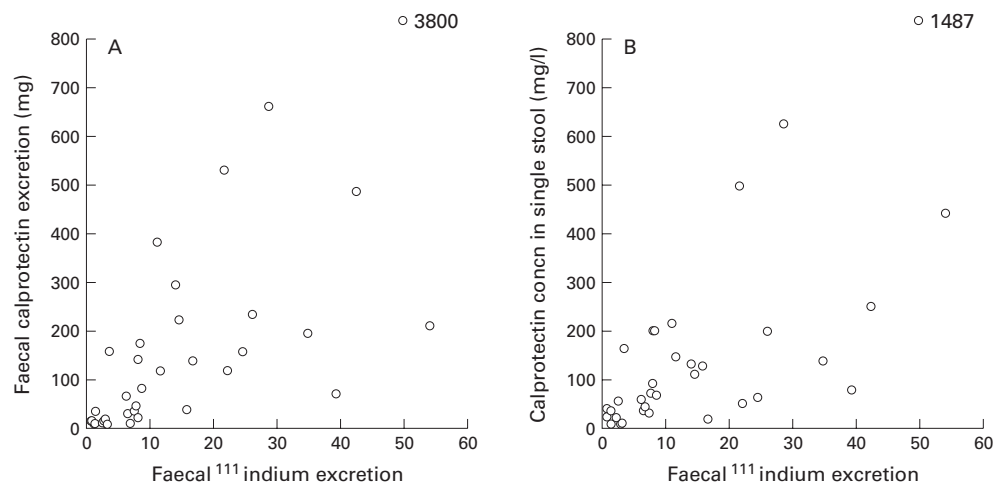


Figure 1 (A) Four day faecal excretion of $^{111}\text{indium}$ labelled white cells (% dose) plotted against four day faecal excretion (mg) of calprotectin ($r=0.80$, $p<0.001$). (B) Four day faecal excretion of $^{111}\text{indium}$ white cells plotted against single stool calprotectin concentrations (mg/l) ($r=0.70$, $p<0.001$) in patients with Crohn's disease.

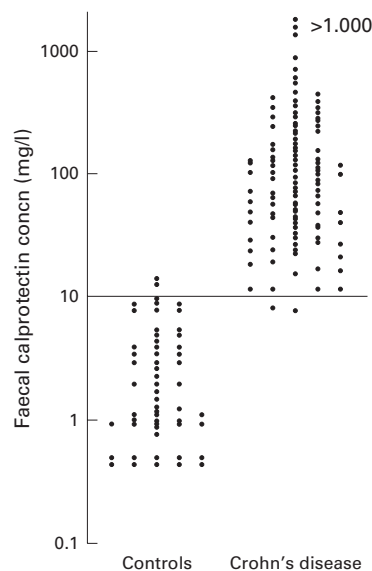


Figure 2 Concentrations of calprotectin (on a logarithmic scale) in faeces in 116 patients with Crohn's disease compared with controls. The horizontal line indicates the upper normal limit (+2SD) for calprotectin concentrations.

CDAI (median 177; 95% CI 42–311) correlated significantly ($r=0.88$, $p<0.0001$) with the Harvey-Bradshaw activity score, but there was only a weak correlation between these indices ($r=0.46$ and $r=0.42$, $p=0.04$) and faecal calprotectin concentrations in the 48 patients where all three parameters were studied.

The median Harvey-Bradshaw clinical activity score was 5.0 (95% CI 4–15) in the 116 patients, which similarly correlated significantly, but weakly ($r=0.37$; $p<0.05$), with faecal calprotectin concentrations. Patients ($n=41$) with clinically active Crohn's disease (Harvey-Bradshaw score of 5 or more or a four point increase from baseline in patients having undergone intestinal resection) had significantly higher ($p<0.001$) faecal calprotectin concentrations (median 165 mg/l; 95% CI 96–362 mg/l) than those with quiescent disease (median 87 mg/l; 95% CI 26–213 mg/l) defined in this way.

PROSPECTIVE STUDY

Of the 220 consecutive subjects referred to the gastroenterology outpatient services, the final diagnosis was Crohn's disease in 31 (eight colonic, 16 ileal or small bowel, and seven ileo-caecal), irritable bowel syndrome in 159, and miscellaneous in 30 (microscopic colitis ($n=6$), diverticulosis/diverticulitis ($n=19$), and colonic cancer/adenomatous polyps ($n=2$ and $n=3$, respectively)). Demographic details are shown in table 1. Patients in the miscellaneous group were significantly older than the other patients in this study and there were significantly more women in the irritable bowel group than in the other groups.

Figure 3 shows that all patients with Crohn's disease had increased faecal calprotectin concentrations (median 135 mg/l; 95% CI 105–229 mg/l) which differed significantly ($p<0.0001$) from normal controls, patients with irritable bowel syndrome (4 mg/l; 95% CI 3–5 mg/l), and the miscellaneous group (20

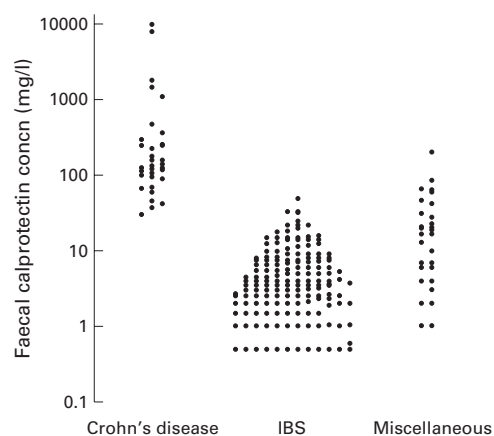


Figure 3 Concentrations of calprotectin (on a logarithmic scale) in faeces in patients subsequently diagnosed as having Crohn's disease, irritable bowel syndrome (IBS), and miscellaneous diseases. The upper normal limit (+2SD) for calprotectin concentrations is 10 mg/l.

mg/l; 95% CI 7–28 mg/l). Patients with the irritable bowel syndrome and the miscellaneous group had significantly ($p=0.0004$ and $p<0.0001$, respectively) higher faecal calprotectin concentrations than normal controls (2 mg/l; 95% CI 2–3 mg/l).

Median ESR in patients with Crohn's disease (23 mm/h; 95% CI 10–45 mm/h) was significantly ($p<0.0001$) higher than that in patients with the irritable bowel syndrome (6 mm/h; 95% CI 6–8 mm/h) but not ($p=0.24$) in the miscellaneous group (median 11 mm/h; 95% CI 8–44 mm/h). The difference in ESR between patients in the miscellaneous group and those with the irritable bowel syndrome was significant ($p=0.0004$).

Figure 4 shows CRP values. Median CRP levels in patients with Crohn's disease (10 mg/l; 95% CI 3–30 mg/l) were significantly higher than those in patients with the irritable bowel syndrome (3 mg/l; 95% CI 3–3 mg/l; $p<0.0001$), and the miscellaneous group (3 mg/l; 95% CI 3–7 mg/l; $p=0.039$) but there was no significant difference ($p>0.2$) between patients with irritable bowel syndrome and the miscellaneous group.

Six (19%) of 31 patients with Crohn's disease, 121 (76%) of 159 with the irritable bowel syndrome, and eight (27%) of the miscellaneous group fulfilled the ROME criteria for irritable bowel syndrome.

All six patients in the miscellaneous group with microscopic colitis, nine of 19 with diverticulosis/diverticulitis (the study did not allow reliable discrimination between the two), both of the colonic cancer, and two of three patients with adenomatous colonic polyps had increased faecal calprotectin concentrations (above 10 mg/l).

The sensitivity and specificity of faecal calprotectin, ESR, and CRP in discriminating between Crohn's disease (analysed separately and together with the miscellaneous group) and irritable bowel syndrome is shown in fig 5. At a cut off point of 30 mg/l, faecal calprotectin had 100% sensitivity and 97% specificity in discriminating between active Crohn's disease and the irritable bowel syndrome.

Twenty seven patients (17%) with irritable bowel syndrome had calprotectin concentrations exceeding the upper normal reference value of 10 mg/l. Receiver operating curve

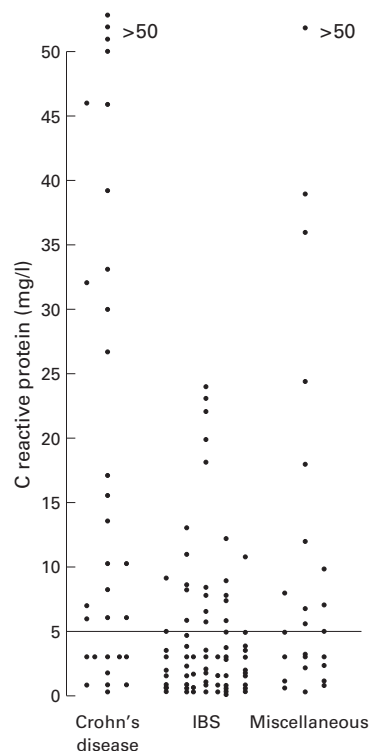


Figure 4 Serum C reactive protein levels in patients subsequently diagnosed as having Crohn's disease, irritable bowel syndrome (IBS), and miscellaneous disease. The upper limit of normal, which had previously been established at the Department of Immunology, King's College Hospital, for C reactive protein is 5 mg/l.

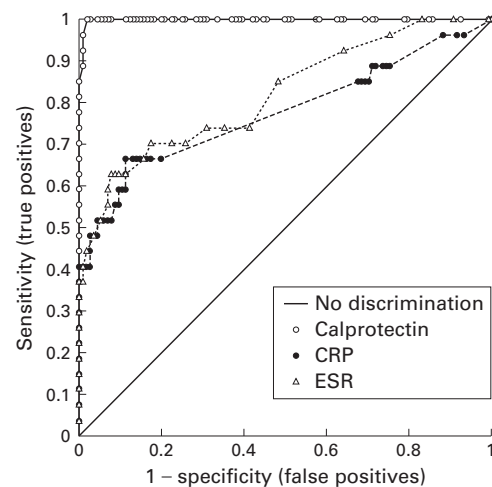


Figure 5 Receiver operating characteristic analysis of the ability of calprotectin, C reactive protein (CRP), and erythrocyte sedimentation rate (ESR) to discriminate between patients with Crohn's disease and the irritable bowel syndrome. The unbroken line ("no discrimination") indicates values that have no discriminatory value. Note that on the vertical axis, the scale is from no (0) to complete (1 or 100%) sensitivity. The horizontal axis is a reciprocal scale (1-specificity). The optimum performance of a test is determined either as the highest sum of the specificity and sensitivity or at an acceptable level of sensitivity for the given disease. A cut off value of 30 mg/l for faecal calprotectin gives 100% sensitivity and 97% specificity for discriminating between patients with Crohn's disease and the irritable bowel syndrome.

analysis showed that setting an arbitrary upper limit of normal of 15 mg/l, only 13 (8% false positive rate) patients with the irritable bowel syndrome had increased calprotectin levels.

Discussion

Abdominal scintigraphy following injection of labelled white cells can be used to indicate the presence, location, and extent of intestinal inflammatory bowel disease⁸⁻¹¹ and measurement of four day faecal excretion of ¹¹¹indium provides a direct quantitative measure of intestinal inflammation.^{8-11 28 30 31} The technique is specific for inflammation rather than classic inflammatory bowel disease, as abnormalities are found in various other intestinal inflammatory diseases,^{24 32-34} including colonic malignancy.³⁵ However, it is usually a simple matter to distinguish between these inflammatory conditions and active classical inflammatory bowel disease as the former are associated with a modest 3-8-fold increase in excretion of white cells while there is a 15-50-fold increase in the latter.

The validity of an inflammatory index, such as faecal calprotectin, is its ability to reflect truly the degree of intestinal inflammation. Without a proven reference or gold standard for this measure in Crohn's disease, we compared the method with that of the ¹¹¹indium white cell technique which is an extensively validated surrogate marker of intestinal inflammation.^{8-11 28 30 31} There was a significant correlation between faecal excretion of ¹¹¹indium labelled white cells and calprotectin in patients with Crohn's disease. This correlation was largely maintained when single morning stool calprotectin concentrations were used as opposed to complete one or four day collections. However, this simplification of the test, which is desirable if the technique is to be used as a routine test, is at the cost of reproducibility. The coefficient of variation between daily faecal excretion of calprotectin (29%) is comparable with that of other faecal markers such as elastase 1 (15%) and chymotrypsin (30%)³⁶ and is probably due to differences in the uniformity, number, and weight of daily bowel openings as well as the slightly uneven distribution of the markers in faeces.¹⁸ The coefficient of variation for calprotectin concentrations is somewhat higher (54%), presumably as this measure is also dependent on stool volume and hydration. This may not be an important drawback of the technique when used in patients with active inflammatory bowel disease as stool volumes are usually increased by less than threefold while calprotectin concentrations are often increased 10-fold or more. Nevertheless, if intestinal inflammation is low grade or associated with very high volume diarrhoea (acquired immunodeficiency syndrome), a single stool sample may underestimate the severity of the inflammation.

Having shown an acceptable correlation between calprotectin concentrations and four day faecal excretion of ¹¹¹indium white cells, the former was shown to discriminate between normals and 96% of patients with Crohn's disease in a conventional cross sectional study.

This is a higher detection rate than is reported with other non-invasive tests apart perhaps from the four day faecal excretion of ¹¹¹indium white cells (reviewed by Hodgson⁵). In comparison, other non-invasive procedures for identifying Crohn's disease, such as measurement of intestinal permeability, faecal lysozyme, and non-specific laboratory indices of inflammation (platelet counts, ESR, and CRP), are abnormal in 20–80% of patients with active disease^{5 25 37 38} and considerably lower in quiescent disease.

There was a significant, albeit weak, correlation between calprotectin concentrations and the two clinical disease activity indexes in the cross sectional study. The lack of a stronger association is not altogether unexpected as the clinical disease activity scores are largely a composite of quantitative subjective symptoms that are affected by non-inflammatory processes such as fibrous strictures, fistulas, previous surgery (44% of our patients had undergone intestinal resection), etc.^{39 40} By comparison, correlations between faecal excretion of ¹¹¹indium white cells and clinical disease activity indices are usually weak.^{3 8 9 30 31 41 42} Such findings have suggested that the inflammatory response (excretion of neutrophils) is dependent on the extent of the disease as well as the severity of the inflammation. Furthermore, the cause of symptoms in Crohn's disease is multifactorial.³

Regardless of how sensitive the calprotectin technique may be in the detection of patients with previously diagnosed Crohn's disease, its potential use in identifying patients with Crohn's disease and discriminating between them and those with non-inflammatory conditions in a realistic outpatient setting requires study.

However, similar to the ¹¹¹indium white cell technique, the calprotectin method is not specific for inflammatory bowel disease but detects intestinal inflammation due to a variety of causes.^{19 43 44} In planning the present study one possibility was to use the method to distinguish between any "intestinal inflammatory condition" and the irritable bowel syndrome in an indiscriminate way. This would have required standardised, inflexible, and complete gastrointestinal investigations (including endoscopy and colonoscopy in all subjects) which was impractical as it would have involved a number of invasive investigations that might not otherwise have been indicated. As a compromise we confined the study to a subgroup of patients where the principal differential diagnosis was between Crohn's disease and the irritable bowel syndrome. This distinction is a familiar problem for general practitioners and this patient group represents a sizeable proportion of gastroenterological referrals⁴⁵; the irritable bowel syndrome being a non-inflammatory intestinal disease affecting 6–20% of the western population²⁶ with symptoms often mimicking those of Crohn's disease. The ROME criteria, a consensus definition proposed as an aid to enable a positive diagnosis of the irritable bowel syndrome, is widely used but in clinical practice the diagnosis of irritable bowel syn-

drome remains, by and large, by exclusion of other diseases.²⁶ There is, however, a dilemma over how aggressively patients should be investigated before this diagnosis is made and the cost effectiveness of the investigation.⁴⁵ At present there is no single, simple, and/or specific screening test to discriminate these patients from those with Crohn's disease, many clinicians opting for laboratory screening (ESR, CRP, platelets, full blood count, etc.) before more invasive tests are undertaken. However, a normal "screen" is not conclusive evidence of absence of Crohn's disease and the tests lack specificity for intestinal disease.⁵ Many patients, therefore, undergo extensive and invasive investigations before the diagnosis is made.

To mimic a realistic clinical situation, we excluded (from analysis and inclusion in this study) patients in whom a diagnosis (ulcerative colitis) was made by simple sigmoidoscopic examination and biopsy, even though faecal calprotectin concentrations are almost invariably raised in these patients.²⁰ We also excluded patients who had established extraintestinal diseases that are often associated with raised ESR or CRP, thus biasing the results in their favour. Receiver operating curve analysis of faecal calprotectin concentrations under these circumstances showed that a cut off point of 30 mg/l for calprotectin had 100% sensitivity and 97% specificity for discriminating between Crohn's disease and the irritable bowel syndrome. This was significantly better than that obtained with ESR or CRP. Similar prospective studies have not been reported with other faecal markers of intestinal inflammation or with labelled white cells.

Patients in the miscellaneous group had significant pathologies which would be desirable to detect in any screening programme. Including the miscellaneous group with the Crohn's disease group resulted in somewhat lower sensitivity and specificity for faecal calprotectins as just over 50% of patients with diverticulosis/diverticulitis had normal results. However, the faecal calprotectin test detected the majority of patients with significant gastrointestinal disease using a cut off point of 13–15 mg/l. Using these cut offs, 23 (14%) and 13 (8%) patients with the irritable bowel syndrome would have undergone invasive investigations, respectively, but this needs to be viewed in the context that the whole group was deemed to require such investigations at the start of the study. Furthermore, although it is desirable to have a method that discriminates effectively between patients with Crohn's disease and the irritable bowel syndrome, it is noticeable that the irritable bowel syndrome group had significantly higher median calprotectin concentrations in stool, with 17% having values above the upper normal limit (10 mg/l). This may suggest that a proportion of patients with the irritable bowel syndrome have intestinal disease (such as bacterial or viral infections, small bowel inflammation, etc.) that are not detected by conventional routine investigation. Our somewhat limited work up for intestinal infections, although probably representative of many gastroentero-

logical practices, is a contentious issue. It is possible that a more extensive investigation (for example, use of electron microscopy for enteric viruses⁴⁶) would have identified more pathogens in this patient group.

In summary, faecal excretion and single stool concentrations of calprotectin have been validated against a four day collection in patients with Crohn's disease with satisfactory correlations between the methods. Calprotectin concentrations were elevated in the majority of patients with established Crohn's disease and the method had a high sensitivity and specificity in prospectively discriminating between patients presenting with Crohn's disease and the irritable bowel syndrome. The simplicity of the method, low cost, and sensitivity suggests that it has potential as a routine screening test and may be a useful aid in the differential diagnosis of Crohn's disease and the irritable bowel syndrome.

Dr Tibble was supported by an SE Thames NHS Executive R&D grant.

- 1 Best WR, Beckett JM, Singleton JW, *et al.* Development of a Crohn's disease activity index. *Gastroenterology* 1976;70:439-44.
- 2 Harvey RF, Bradshaw JM. A simple index of Crohn's disease activity. *Lancet* 1980;1:514.
- 3 Irvine EJ. Finding the right index for IBD. In: Collins SM, Martin F, McLeod RS, *et al.*, eds. *Inflammatory bowel disease. Basic research, clinical implications and trends in therapy.* Dordrecht: Kluwer Academic Publishers, 1994: 191-6.
- 4 Fagan EA, Dyck RF, Maton PN, *et al.* Serum levels of C-reactive protein in Crohn's disease and ulcerative colitis. *Eur J Clin Invest* 1982;12:351-60.
- 5 Hodgson HJF. Laboratory markers of inflammatory bowel disease. In: Allan RN, Rhodes JM, Haunauer SB, *et al.*, eds. *Inflammatory bowel disease*, 3rd edn. New York: Churchill Livingstone, 1997:329-34.
- 6 Mazlam MZ, Hodgson HJF. Why measure C reactive protein? *Gut* 1994;35:5-7.
- 7 Sachar DB, Luppescu NE, Bodian C, *et al.* Erythrocyte sedimentation as a measure of Crohn's disease activity: opposite trends in ileitis versus colitis. *J Clin Gastroenterol* 1990;12:643-6.
- 8 Saverymuttu SH, Peters AM, Lavender JP, *et al.* 111-Indium autologous leucocytes in inflammatory bowel disease. *Gut* 1983;24:293-9.
- 9 Saverymuttu SH, Peters AM, Lavender JP, *et al.* Quantitative faecal indium-111 labelled leucocyte excretion in assessment of disease activity in Crohn's disease. *Gastroenterology* 1983;85:1333-9.
- 10 Saverymuttu SH, Camilleri M, Rees H, *et al.* Indium-111 granulocyte scanning comparison with colonoscopy, histology and faecal indium-111 excretion in assessing disease extent and activity in colitis. *Gastroenterology* 1986;90: 1121-8.
- 11 Roddie ME, Hodgson HJF. Pitfalls in labelled leucocyte scanning. In: Williams CN, ed. *Trends in inflammatory bowel disease therapy.* Dordrecht: Kluwer Academic Publishers, 1990:121-30.
- 12 Chadwick VS. Clinical investigation of patients with malabsorption and diarrhoea. In: Bouchier IAD, Allan RN, Hodgson HJF, *et al.*, eds. *Textbook of gastroenterology.* London: Bailliere Tindall, 1984:428-41.
- 13 Braegger CP, Nicholls S, Murch SH, *et al.* Tumour necrosis factor α in stool as a marker of intestinal inflammation. *Lancet* 1992;339:89-91.
- 14 Choudary CP, O'Mahoney S, Brydon G, *et al.* Gut lavage fluid protein concentrations: Objective measures of disease activity in inflammatory bowel disease. *Gastroenterology* 1993;104:1064-71.
- 15 Adeyem BO, Hodgson HJF. Faecal elastase reflects disease activity in active ulcerative colitis. *Scand J Gastroenterol* 1992;27:139-42.
- 16 Uchida K, Matsuse R, Tomita S, *et al.* Immunochemical detection of human lactoferrin in faeces as a new marker of inflammatory gastrointestinal disorders and colon cancer. *Clin Biochem* 1994;27:259-64.
- 17 Guerrant RL, Araujo V, Soares E, *et al.* Measurement of faecal lactoferrin as a marker of faecal leukocytes. *J Clin Microbiol* 1992;30:1238-42.
- 18 Roseth AG, Fagerhol MK, Aadland E, *et al.* Assessment of the neutrophil dominating calprotectin in feces. A methodologic study. *Scand J Gastroenterol* 1992;27:793-8.
- 19 Roseth AG, Kristinsson J, Fagerhol MK, *et al.* Faecal calprotectin: A novel test for the diagnosis of colorectal cancer? *Scand J Gastroenterol* 1993;28:1073-6.
- 20 Roseth AG, Aadland E, Jahnson J, *et al.* Assessment of disease activity in ulcerative colitis by faecal calprotectin, a novel granulocyte marker protein. *Digestion* 1997;58:176-80.
- 21 Malchow H, Ewe K, Brandes JW, *et al.* European cooperative Crohn's disease study (ECCDS): results of drug treatment. *Gastroenterology* 1984;86:249-66.
- 22 Best WR, Beckett JM. The Crohn's disease activity as a clinical instrument. In: Pena A, Weterman IT, Booth CC, *et al.*, eds. *Recent advances in Crohn's disease.* The Hague: Martinus Nijhoff, 1981:7-12.
- 23 Best WR, Beckett JM, Singleton JW. Rederived values of the eight coefficients of the Crohn's disease activity index (CDAI). *Gastroenterology* 1979;77:843-6.
- 24 Bjarnason I, Hayllar J, Macpherson AJ, *et al.* Side effects of nonsteroidal anti-inflammatory drugs on the small and large intestine. *Gastroenterology* 1993;104:1832-47.
- 25 Bjarnason I, Macpherson AJM, Hollander D. Intestinal permeability: An overview. *Gastroenterology* 1995;108: 1566-81.
- 26 Drossman DA, Whitehead WE, Camilleri M. Irritable bowel syndrome: A technical review for practice guideline development. *Gastroenterology* 1997;112:2120-37.
- 27 Lynn RB, Friedman LS. Irritable bowel syndrome. *N Engl J Med* 1993;329:1940-5.
- 28 Teahon K, Smethurst P, Levi AJ, *et al.* The effect of elemental diet on intestinal permeability and inflammation in Crohn's disease. *Gastroenterology* 1991;101:84-9.
- 29 Henderson AR. Assessing test accuracy on its clinical consequence: a primer for receiver operating characteristics curve analysis. *Ann Clin Biochem* 1993;30:521-39.
- 30 Saverymuttu SH. Clinical remission in Crohn's disease—Assessment using faecal indium-111 granulocyte excretion. *Digestion* 1986;33:74-9.
- 31 Teahon K, Smethurst P, Macpherson AJ, *et al.* Intestinal permeability in Crohn's disease and its relation to disease activity and relapse following treatment with elemental diet. *Eur J Gastroenterol Hepatol* 1993;5:79-84.
- 32 Teahon K, Webster AD, Price AB, *et al.* Studies of gastrointestinal structure and function in patients with primary hypogammaglobulinaemia. *Gut* 1994;35:1244-9.
- 33 Bjarnason I, Sharpstone D, Francis N, *et al.* Intestinal inflammation, ileal structure and function in HIV. *AIDS* 1996;10:1385-91.
- 34 Kardassis T, Joseph AEA, Gane JN, *et al.* Faecal leucocytosis. Indium-111 labelled autologous polymorphonuclear leucocyte abdominal scanning, and quantitative faecal indium-111 excretion in acute gastroenteritis and enteropathogen carriage. *Dig Dis Sci* 1988;33:1383-90.
- 35 Saverymuttu SH, Maltby P, Batman P, *et al.* False positive localisation of indium-111 granulocytes in colonic carcinoma. *Br J Radiol* 1986;59:773-7.
- 36 Loser C, Mollgaard A, Folsch UR. Faecal elastase 1: a novel, highly sensitive, and specific tubeless pancreatic function test. *Gut* 1996;39:580-6.
- 37 Tromm A, Tromm CD, Huppe D, *et al.* Evaluation of different laboratory tests and activity indices reflecting the inflammatory activity of Crohn's disease. *Scand J Gastroenterol* 1992;27:774-8.
- 38 van der Sluys Veer A, Brouwer J, Biedmond I, *et al.* Faecal lysozyme in assessment of disease activity in inflammatory bowel disease. *Dig Dis Sci* 1998;43:590-5.
- 39 Spence DT, Mayberry JF. Clinical indices in inflammatory bowel disease. In: Allan RN, Rhodes JM, Haunauer SB, *et al.*, eds. *Inflammatory bowel disease*, 3rd edn. New York: Churchill Livingstone, 1997:335-41.
- 40 Brooke BN. Index of Crohn's disease activity. *Lancet* 1980;i: 711.
- 41 Crama-Bohbouth G, Pena AS, Biemond I, *et al.* Are activity indices helpful in assessing active intestinal inflammation in Crohn's disease? *Gut* 1989;30:1236-40.
- 42 Teahon K, Pearson M, Smith T, *et al.* Alterations in nutritional status and disease activity during treatment of Crohn's disease with elemental diet. *Scand J Gastroenterol* 1995;30:54-60.
- 43 Meling TR, Aabakken L, Roseth A, *et al.* Faecal calprotectin shedding after short-term treatment with non-steroidal anti-inflammatory drugs. *Scand J Gastroenterol* 1996;31: 339-44.
- 44 Tibble J, Sigthorsson G, Foster R, *et al.* NSAID enteropathy: A new simple diagnostic test. *Gut* 1998; 42(suppl 1):A36.
- 45 Harris MS. Irritable bowel syndrome. A cost effective approach for primary care physicians. *Postgrad Med* 1997;101:215-26.
- 46 Grohmann GS, Glass RI, Pereira HG, *et al.* Enteric viruses and diarrhoea in HIV-infected patients. *N Engl J Med* 1993;329:14-20.