

Case reports

Serum KL-6 level as a monitoring marker in a patient with pulmonary alveolar proteinosis

Masamitsu Nakajima, Toshiaki Manabe, Yoshihito Niki, Toshiharu Matsushima

Abstract

A raised serum level of KL-6 is known to exist in active pulmonary fibrosis and KL-6 may be produced and secreted by type II pneumocytes. A case is described of pulmonary alveolar proteinosis with high serum KL-6 levels. The serum KL-6 level decreased after whole lung washing and correlated with symptoms, opacities on the chest radiograph, and arterial blood gas measurements. The serum KL-6 level may represent a useful marker for pulmonary alveolar proteinosis.

(Thorax 1998;53:809-811)

Keywords: KL-6; pulmonary alveolar proteinosis; tumour marker

KL-6 is a mucin-like high molecular weight glycoprotein which is now classified as cluster 9 (MUC-1).¹ The serum level of KL-6 is known to be an indicator of disease activity in pulmonary fibrosis.²⁻⁴ We have previously reported that KL-6 is produced and secreted in the serum by pulmonary type II pneumocytes.⁵ Pulmonary alveolar proteinosis is characterised by deposition of proteinaceous material in air spaces. This material consists of lipid bilayer membranes separated by amorphous proteinaceous material containing phospholipids and proteins similar to surfactant or one of its components. The cause of this condition remains unclear, but it is probably related to either overstimulation of type II pneumocytes and/or an impairment in the mechanisms for removal of alveolar phospholipids.⁶⁻¹⁰ We describe a patient with pulmonary alveolar proteinosis who had high serum KL-6 levels which were monitored before and after whole lung washings.

Case report

A 40 year old man who presented with exertional dyspnoea was found to have non-segmental bilateral reticular infiltration shadows in the middle and lower lung fields on the chest radiograph (fig 1A). A chest CT scan revealed diffuse ground glass opacity with thickening of the interlobular septum and a

peripheral clear zone (fig 1B). In October 1991 a diagnosis of pulmonary alveolar proteinosis was confirmed by the grossly milky opacity of the bronchoalveolar lavage (BAL) fluid, histopathological findings of a transbronchial lung biopsy specimen (fig 2A), a biochemical analysis of phospholipids, and an electron microscopic study of the lavage fluid. With the patient breathing room air, his arterial blood gas values were as follows: pH 7.45; Pao₂ 8.53 kPa. Other laboratory data revealed a haemoglobin level of 15.6 g/dl, a white blood cell count of 4500/μl with normal differentials, an erythrocyte sedimentation rate of 3 mm/h, and C reactive protein (CRP) of 0.3 mg/dl. Blood chemical analysis demonstrated a high serum lactate dehydrogenase (LDH) level of 198 IU/l. Analysis of bronchoalveolar lavage fluid revealed total cells of 24.5 × 10⁵ cells/ml. The percentages of macrophages, lymphocytes and neutrophils from the recovered cells were 99%, 1% and 0%, respectively. Whole lung washing alleviated his symptoms, affected the shadows on his chest radiographs, and brought his blood gas values towards normal. However, in 1992, 1993, 1994, and 1996 he was admitted to hospital with dyspnoea and the ground glass opacities on the chest radiographs were con-

Division of
Respiratory Diseases,
Department of
Internal Medicine
M Nakajima
Y Niki
T Matsushima

Department of
Pathology
T Manabe

Kawasaki Medical
School, 577
Matsushima,
Kurashiki 701-0192,
Japan

Correspondence to:
Dr M Nakajima.

Received 13 August 1996
Returned to authors
2 April 1997
Revised manuscript received
7 May 1997
Accepted for publication
30 May 1997

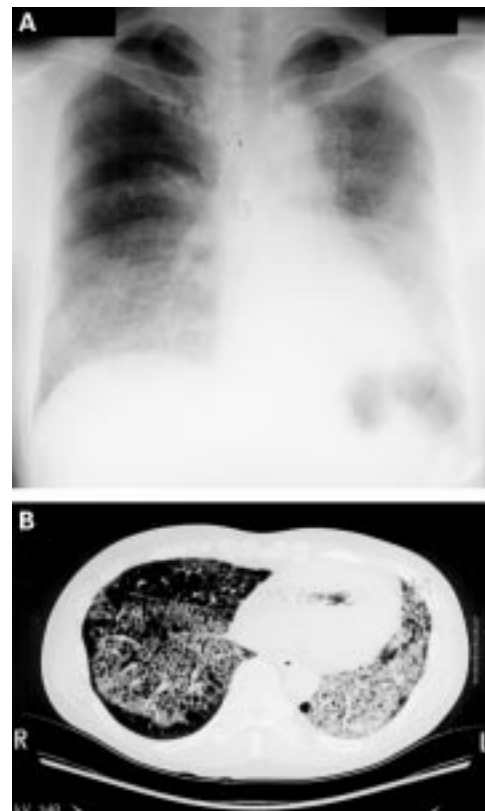


Figure 1 (A) Chest radiograph showing non-segmental and bilateral reticular shadows in middle and lower lung fields. (B) Chest CT scan revealing diffuse ground glass opacity with thickening of the interlobular wall and peripheral clear zone.

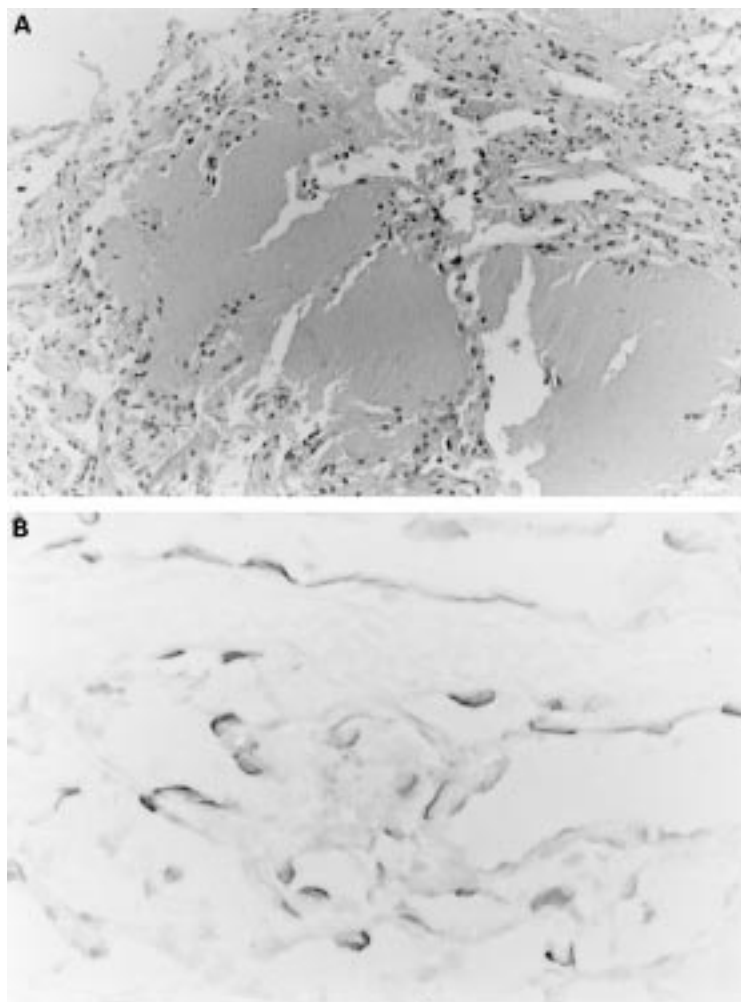


Figure 2 (A) Granular, amorphous, and eosinophilic material occupying the alveolar lumen. Type II pneumocytes are slightly swollen. Stain: haematoxylin and eosin. (B) Immunohistological staining for KL-6. Type II pneumocytes exhibit a positive reaction for KL-6.

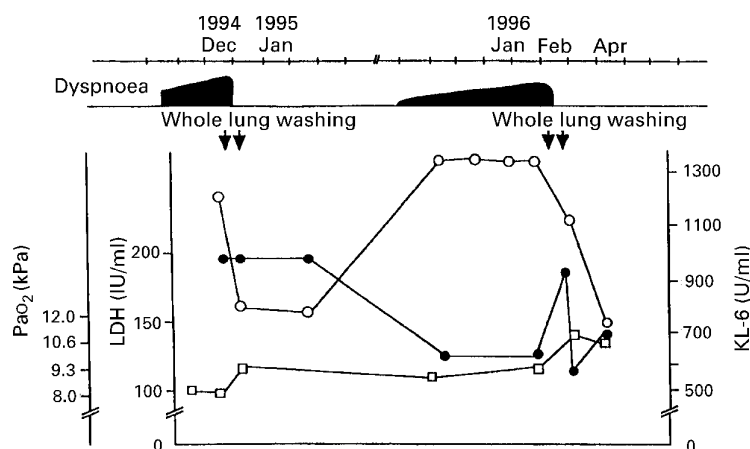


Figure 3 Clinical course. Cut off levels for KL-6 (\circ), Pao₂ (\square) and LDH (\bullet) were 500 U/ml, 10.6 kPa, and 125 IU/ml, respectively.

sistent with recurrence of pulmonary alveolar proteinosis. Total bilateral whole lung lavages were performed on two different occasions, about two weeks apart. We examined the KL-6 levels with a sandwich-type enzyme linked immunosorbent assay (EIA) using KL-6 monoclonal antibody (IgG₁) in serum and whole lung washing fluids (fig 2B). The serum

KL-6 levels were extremely high before whole lung washing, but decreased and were within the normal range after whole lung washing in December 1994 and February 1996. The level of KL-6 in whole lung washing fluid was 100 000 U/ml. The serum levels of KL-6 correlated with symptoms, opacities on the chest radiographs, and Pao₂ levels (fig 3). Immunostaining with monoclonal KL-6 antibody (mouse IgG) was performed on trans-bronchial lung biopsy specimens using the avidin-biotin-peroxidase complex (ABC) method. There was strongly positive immunoreactivity for KL-6 to the alveolar epithelium. This was confirmed using a positive control of pulmonary fibrosis with type II cell hyperplasia and negative controls of paraquat lung in which type II cells are completely lost as well as those of omission of primary antisera.

Discussion

Pulmonary alveolar proteinosis is a disease of unknown cause with accumulation of surfactant-like substance in alveolar and bronchiolar lumina.⁶⁻¹⁰ Pulmonary surfactant is a complex mixture of lipids and proteins which are produced and secreted by pulmonary type II pneumocytes. Interstitial fibrosis is not usually seen.¹⁰ BAL and whole lung washing are useful treatments for pulmonary alveolar proteinosis. Some patients with pulmonary alveolar proteinosis do not require more than one or two lavages or whole lung washings and few patients require them to be repeated semi-annually or annually.

KL-6 has been reported as a new serum marker for indicating the disease activity in patients with pulmonary fibrosis.²⁻⁴ We have previously reported that KL-6 is produced and secreted by pulmonary type II pneumocytes.⁵ However, the mechanism of the production of KL-6 from pulmonary type II pneumocytes is still unknown, and further studies are necessary.

We have reported that some glycoproteins and tumour markers such as carcinoembryonic antigen (CEA), sialyl LeX (SLX), and carbohydrate antigen 15-3 (CA 15-3) are found in high levels in whole lung washing fluid, and that they were produced by type II pneumocytes in a patient with pulmonary alveolar proteinosis.¹¹ Serum KL-6 levels were extremely high before whole lung washing and correlated with dyspnoea, arterial blood gas analysis (Pao₂), and the degree of opacities on the chest radiographs before and after whole lung washing. In this case serum carcinoembryonic antigen (CEA) and CA 15-3 levels were also examined and were found to be slightly raised before washing and decreased afterwards. These findings suggest that type II cell pneumocytes could produce not only glycoproteins such as CEA and CA 15-3, but also a high molecular glycoprotein such as KL-6. As a result, the serum KL-6 level could be a useful indicator and monitoring marker for pulmonary alveolar proteinosis.

Variable indicating markers in pulmonary alveolar proteinosis including chest radiographic findings, serum LDH levels, and blood

gas analysis results have been reported. The level of PaO_2 correlated with symptoms, but serum LDH levels did not and there was a high LDH level after the first whole lung washing in 1996. In this case, serial measurements of serum KL-6 and LDH levels revealed that KL-6 correlated more closely with disease activity than serum LDH levels.

Previous reports have shown that the serum KL-6 level is a useful marker for pulmonary fibrosis.²⁻⁵ However, in this case pulmonary fibrosis was not prominent because the chest radiographic findings, pulmonary function test results, and blood gas analysis results were almost normal after whole lung lavage. We have shown that the serum KL-6 level can be raised in pulmonary alveolar proteinosis without pulmonary fibrosis. Although pulmonary alveolar proteinosis is a rare disease, we should be aware that a high serum KL-6 level exists in the disease and that it could be an indicator and a good monitoring marker.

1 Kohno N, Inoue Y, Hamada H, *et al.* Difference in serodiagnostic values among KL-6-associated mucins classified as cluster 9. *Int J Cancer* 1994;8(Suppl):81-3.

- 2 Kohno N, Koizumi S, Awaya Y, *et al.* New serum indicator of interstitial pneumonitis activity: sialylated carbohydrate antigen KL6. *Chest* 1989;96: 68-73.
- 3 Hamada H, Kohno N, Akiyama M, *et al.* Monitoring of serum KL-6 antigen in a patient with radiation pneumonia. *Chest* 1992;101:858-60.
- 4 Kohno N, Awaya Y, Oyama T, *et al.* KL-6, a mucin-like glycoprotein in bronchoalveolar lavage fluid from patients with interstitial lung disease. *Am Rev Respir Dis* 1993;148: 637-42.
- 5 Nakajima M, Yoshida K, Miyashita N, *et al.* Correlation between KL-6 positive type II pneumocyte and serum KL-6 levels in pulmonary fibrosis. *Am J Respir Crit Care Med* 1995;151:A541.
- 6 Gilmore LB, Talley FA, Hook GE. Classification and morphometric quantitation of insoluble materials from the lungs of patients with alveolar proteinosis. *Am J Pathol* 1988;133:252-64.
- 7 Claypool WD, Rogers RM, Matuschak GM. Update on the clinical diagnosis, management, and pathogenesis of pulmonary alveolar proteinosis (phospholipidosis). *Chest* 1984;85:550-8.
- 8 Akino T, Okano G, Ohno K. Alveolar phospholipids in pulmonary alveolar proteinosis. *Tohoku J Exp Med* 1978;126: 51-62.
- 9 Singh G, Katyal SL, Bedrossian CW, *et al.* Pulmonary alveolar proteinosis. Staining for surfactant apoprotein in alveolar proteinosis and in conditions simulating it. *Chest* 1983;83:82-6.
- 10 Clague HW, Wallace AC, Morgan WK. Pulmonary interstitial fibrosis associated with alveolar proteinosis. *Thorax* 1983;38:865-6.
- 11 Nakajima M, Tamada S, Yoshida K, *et al.* A case of pulmonary alveolar proteinosis with high level of tumor markers. *Jpn J Thorac Dis* 1994;32:1109-14 (in Japanese with English abstract).

Thorax 1998;53:811-812

Reactivation of coccidioidomycosis in a fit American visitor

F M K Williams, V Markides, J Edgeworth, A J Williams

Abstract

The case history is presented of an American visitor, known to have had primary coccidioidomycosis previously, who became very unwell during a visit to the UK. Despite consideration of reactivation of coccidioidomycosis from the outset, other pathogens were identified while *Coccidioides immitis* was not initially, leading to a delay in treatment.

(*Thorax* 1998;53:811-812)

Keywords: coccidioidomycosis; diagnosis

Coccidioidomycosis is a fungal infection endemic in the south western United States, Mexico, and Central and South America.¹ Infection by the organism *Coccidioides immitis* usually produces a mild 'flu-like illness or no symptoms at all,² and previous exposure to *C immitis* may be detected by serological and skin testing.

Case report

A 48 year old Caucasian man had developed a 'flu-like illness followed by dyspnoea and a productive cough shortly after arriving in the UK

for a Christmas holiday. He had lived all his life in California and was working as a park ranger, but denied contact with animals. He was a life long non-smoker and had no risk factors for human immunodeficiency virus (HIV). He presented to the referring hospital and was found to have signs of bilateral pneumonia. There was a neutrophil leucocytosis (total white cell count (WCC) $11.2 \times 10^9/l$), arterial blood gases on air revealed hypoxaemia (pH 7.54, PaO_2 6.8 kPa, Paco_2 2.9 kPa, Sao_2 91%), and the chest radiograph showed consolidation in the left mid and lower zones and the right lower zone. Two years previously he had had "valley fever", a self-limiting infection caused by *C immitis* which had manifested as a 'flu-like illness and an abnormal chest radiograph. As is usual in valley fever, skin tests had become positive and the illness had resolved without treatment.²

The patient had been admitted to the referring hospital and intravenous cefuroxime and erythromycin were administered. Culture of purulent sputum revealed a heavy growth of group A β haemolytic streptococcus (GABHS) and the influenza A titre was raised and fell three weeks later (1 in 128 to 1 in 40). The working diagnosis was severe streptococcal pneumonia secondary to influenza, and this was supported subsequently by raised streptolysin O (300) and DNase titres (800) which subsequently fell to 100 and 300, respectively. The referring team considered reactivation of coccidioidomycosis but sputum sent to Bristol Public Health Laboratory Service failed to grow *C immitis* and serological tests were also negative. Despite this, and a negative HIV test, amphotericin B was started 10 days after admission because the patient failed to improve.

Lane-Fox Respiratory Unit,
St Thomas' Hospital,
London
SE1 7EH, UK
F M K Williams
V Markides
J Edgeworth
A J Williams

Correspondence to:
Dr A J Williams.

Received 16 January 1997
Returned to author
12 March 1997
Revised manuscript received
14 May 1997
Accepted for publication
30 May 1997