

## *Streptococcus pneumoniae*

J R Catterall

*Streptococcus pneumoniae* was identified as a major respiratory pathogen shortly after its isolation in 1881.<sup>1</sup> Despite a century of intensive study, and antibiotics which readily kill the organism, respiratory tract infections caused by the pneumococcus remain a formidable problem. *S pneumoniae* is the commonest cause of community acquired pneumonia, accounting for up to 70% of cases in hospital.<sup>2-3</sup> Pneumococcal pneumonia is associated with bacteraemia more frequently than other bacterial pneumonias<sup>4</sup> and mortality from bacteraemic pneumococcal pneumonia during the first few days of hospitalisation has changed little since the pre-antibiotic era.<sup>5-6</sup> There is also evidence, from the UK and other countries, that the number of cases of pneumococcal bacteraemia is rising.<sup>7-8</sup> In the third world five million children under the age of five die each year from acute lower respiratory tract infections in which *S pneumoniae* is probably the primary agent,<sup>9</sup> and patients with HIV infection and AIDS also have a high risk of pneumococcal pneumonia and bacteraemia.<sup>10</sup> Furthermore, the worldwide increase in penicillin resistance among pneumococci<sup>11-15</sup> and the limited use of the pneumococcal vaccine<sup>16</sup> suggest that morbidity and mortality from pneumococcal disease may increase.

In recent years there has been an increased understanding of the interactions between the pneumococcus and the host, both in terms of how the virulence factors of the organism contribute to the pathogenesis of pneumonia and how the host's response to infection can be harmful as well as protective. The role of cytokines in pneumococcal pneumonia, the detailed behaviour of neutrophils in the disease, and the mechanisms by which the pneumococcus attaches to the host both during nasopharyngeal colonisation and during invasive disease have all been the subject of recent investigation. Whilst antibiotics and supportive care are likely to remain the keystone of the treatment of established infection, these areas of research offer the best prospects for reducing the high incidence of the disease and the high mortality during the first few days following hospital admission.<sup>17</sup>

This review will therefore concentrate on the pathogenesis of pneumococcal pneumonia, with emphasis on recent advances at the cellular and molecular level. For descriptions of the epidemiology, diagnosis and management of the disease, and for an up to date evaluation of

the effectiveness of the current pneumococcal vaccine, readers are referred to other recent reviews which cover these subjects comprehensively.<sup>18-20</sup>

### **The organism: virulence factors and antibiotic resistance**

Although *S pneumoniae* exists in encapsulated and unencapsulated forms, only encapsulated strains have been isolated from clinical material. The importance of the capsule in pneumococcal virulence was first established by enzymatic removal of the capsule,<sup>21</sup> and has recently been confirmed using genetically engineered pneumococci which differ only in capsular type. The virulence of the mutants in relation to the parental strains was determined mainly, though not entirely, by the capsular type.<sup>22</sup>

However, the capsule itself is not toxic.<sup>23</sup> Composed of one of 90 serologically distinct polysaccharides,<sup>24-25</sup> the virulence of the capsule lies mainly in its antiphagocytic properties (fig 1). The level of virulence is determined more by the chemical nature of the capsule than by its size,<sup>26</sup> and the production of serotype specific protective antibody in response to capsular polysaccharide is the basis of the current anti-pneumococcal vaccine. Geographical, temporal, and age differences in the distribution of the 90 different serotypes<sup>24-25</sup> and the ability of *S pneumoniae* to transfer cassettes of capsular genes from one strain to another leading to a change in capsule specificity<sup>27-28</sup> all have potential implications for vaccine strategy.<sup>25-29</sup> The current 23 valent vaccine includes the serotypes that cause 88% of the bacteraemic infections in the USA<sup>30</sup> and 96% of those in the UK.<sup>18</sup>

In contrast to the capsule, the cell wall is a potent inducer of inflammation,<sup>23</sup> probably via the activation of complement<sup>31</sup> and the induction of cytokines.<sup>32-33</sup> The active component is cell wall polysaccharide, a complex teichoic acid which—very unusually among bacteria—contains phosphorylcholine.<sup>34</sup> As discussed later, phosphorylcholine provides a site of attachment to activated endothelial cells during the course of invasive disease. Antibody against cell wall polysaccharide or phosphorylcholine is protective against pneumococcal challenge, though the protective effect is substantially weaker than that of antibody to capsular polysaccharide.<sup>35</sup>

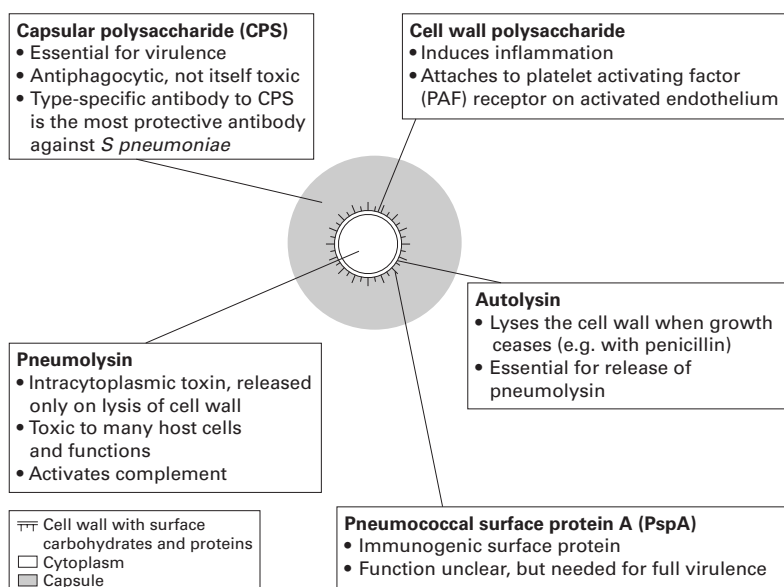


Figure 1 Schematic figure of the known virulence factors of *Streptococcus pneumoniae* including their main functions and cellular location. Only factors with proven virulence are included. For other putative virulence factors, see text.

In addition to surface polysaccharides, the pneumococcus contains a number of proteins that have been shown to contribute to virulence (fig 1).<sup>35-39</sup> These comprise pneumolysin, an intracellular toxin which is released only when the cell wall undergoes lysis; autolysin, the enzyme which is responsible for cell wall lysis; and pneumococcal surface protein A (PspA), a protein on the cell surface which is highly immunogenic in mice.<sup>39</sup> Other pneumococcal products which may contribute to the pathogenicity of the organism, but whose role in virulence has not been established, include neuraminidase,<sup>40-41</sup> hyaluronidase,<sup>42</sup> a neutrophil elastase inhibitor,<sup>43</sup> various proteases including an enzyme which cleaves human IgA,<sup>44-45</sup> an inhibitor of the respiratory burst of neutrophils,<sup>46-47</sup> and a number of putative protein adhesins.<sup>35-48-52</sup>

The most extensively studied of the protein virulence factors is pneumolysin, a toxin which lyses cholesterol-containing cell membranes and activates complement. Pneumolysin has a variety of detrimental effects on host cells and functions in vitro,<sup>36</sup> and causes a severe lobar pneumonia when injected into the apical bronchus of rats.<sup>35</sup> More direct evidence for its role in pathogenicity comes from the demonstration that laboratory mutated strains of pneumococci deficient in pneumolysin have reduced virulence compared with wild type organisms<sup>36-54-56</sup> and that immunisation with pneumolysin or its toxoid protects mice against subsequent challenge with virulent pneumococci.<sup>36</sup> The cytolytic and complement activating properties of pneumolysin have recently been mapped to separate regions of the molecule. Using strains of pneumococci with mutations for each of these molecular sites, it has been shown that both sites contribute to the early pathogenesis of pneumococcal pneumonia at different stages of infection and by different mechanisms.<sup>56-58</sup> Similar studies with antisera and genetically engineered mu-

tants have demonstrated the contributions of autolysin<sup>35-39</sup> and PspA<sup>39</sup> to pathogenicity.

Interest in pneumococcal proteins lies not only in their pathogenicity but also in the fact that, as proteins, they are T dependent antigens and have the potential to be used to improve pneumococcal vaccines. The current vaccine is based on capsular polysaccharides which, as T independent antigens—that is, they can elicit an antibody response by stimulating B lymphocytes directly without the help of T cells—have two disadvantages: very poor immunogenicity in children under the age of two years and the lack of a memory booster response on rechallenge with antigen. By conjugating the polysaccharide antigens to a protein, however, they can be converted into a T dependent form which does not have these drawbacks.<sup>17-35-38</sup> Although there is no immunological necessity for the carrier protein to be from the pneumococcus, a pneumococcal protein may have the advantage of conferring species-specific immunity. One potential disadvantage of the new conjugate vaccines, however, is that only a limited number of serotypes may be included. To determine whether this outweighs the potential advantages it will be necessary to follow both the incidence of pneumococcal disease and the serotype distribution of pneumococci after introduction of the conjugate vaccines.<sup>25</sup>

Another group of clinically relevant proteins are the transcarboxypeptidases in the cell wall which also bind penicillin (penicillin binding proteins).<sup>11-38</sup> Alterations to the penicillin binding properties of these proteins are brought about by transfer of portions of the genes for the penicillin binding proteins from other streptococcal species resulting in mosaic genes, and can occur without affecting the cell wall building functions of the enzymes. Because only portions of the genes are transferred, and because there are a range of penicillin binding proteins which can be modified in a stepwise manner, the level of resistance to penicillin can vary considerably.<sup>11</sup>

This graded nature of penicillin resistance has direct relevance to clinical practice, for most "resistant" species of *S pneumoniae* isolated from clinical samples show only intermediate resistance (minimum inhibitory concentration (MIC) 0.12–1.0 µg/ml) to penicillin. These MICs can easily be exceeded in the lungs by intravenous treatment with high dose penicillin, and Pallares *et al*<sup>12</sup> have recently shown, that even in Spain where the instance of pneumococcal resistance to penicillin is high, the administration of penicillin G or ampicillin in high doses intravenously is still an effective treatment for pneumococcal pneumonia. These authors recommend an alternative—a third generation cephalosporin—only when community acquired pneumonia is life threatening or when risk factors are present for high level penicillin resistance (MIC ≥2.0 µg/ml). It should be noted that the same principles have not been shown to apply to the treatment of erythromycin resistant *S pneumoniae*. Although some of the new macrolides have better lung penetration than erythromycin, clinical studies with these agents have not been performed in

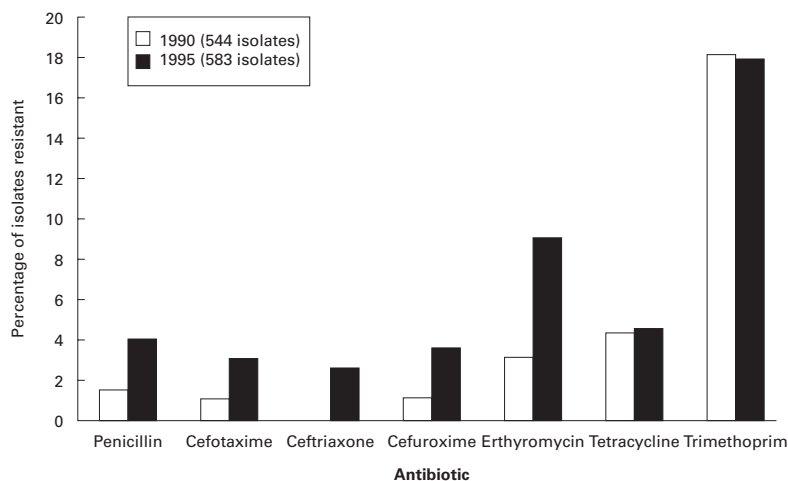


Figure 2 Trends in the prevalence of antibiotic resistance of pneumococci in England and Wales. Results from two observational studies in 1990 and 1995. Modified from references 14 and 15.

patients with erythromycin resistant pneumococcal pneumonia, and in such patients it is recommended that non-macrolide agents be used.<sup>15 19</sup>

Resistance to penicillin in *S pneumoniae* is increasing throughout the world.<sup>11-15</sup> The problem is particularly common in Spain, Eastern Europe, South Africa, South America, New Guinea, and Korea where resistance up to 30-50% is commonly reported.<sup>11</sup> However, even in countries with generally low numbers of resistant organisms, including the UK, the proportion of *S pneumoniae* resistant to penicillin is steadily increasing, along with resistance to erythromycin and other antibiotics (fig 2).<sup>14 15</sup> Most of the resistant strains belong to a small number of serotypes (6, 14, 19, and 23) which are prevalent in young children and which are being included in the new conjugate vaccines.<sup>14</sup>

#### Nasopharyngeal colonisation

The initial step in the pathogenesis of pneumococcal infection is the attachment of the organism to the mucus and cells of the nasopharynx.<sup>60-62</sup> Acquisition of the causative strain usually occurs during the month preceding clinical infection, and studies in closed communities,<sup>63</sup> including recent observations on the spread of penicillin resistant pneumonia in children attending nurseries,<sup>64</sup> have shown that rates of pneumococcal disease depend on the frequency with which invasive serotypes are carried by healthy individuals.

However, colonisation frequently occurs without the development of disease. Colonisation can occur within hours of birth and by the 12th postnasal day the carrier rate is similar to that of the babies' mothers.<sup>63</sup> Carriage rates are highest in pre-school children, whilst rates amongst adults depend on the likelihood of contact with children.<sup>64</sup> Up to four different serotypes can be found at one time usually for periods of several weeks or months.<sup>65-67</sup> Recent studies during two outbreaks of pneumococcal pneumonia in military camps have shown that asymptomatic nasopharyngeal colonisation with *S pneumoniae* frequently results in the production of circulating type specific antibody

at levels which confer protection from pneumonia against that serotype.<sup>68</sup> It therefore appears that, although aspiration of colonising organisms during the first few weeks of colonisation may lead to pneumonia, after that time most healthy adults are likely to be protected.

At the molecular level adherence of *S pneumoniae* to nasopharyngeal cells probably occurs through interaction with a specific disaccharide (N-acetyl-D-glucosamine  $\beta$ 1-3 galactose, GlcNAc $\beta$ 1-3Gal) which forms part of a glycolipid receptor on the epithelial cell surface.<sup>62</sup> The pneumococcal ligand which binds to this specific disaccharide has not yet been identified, but it has been observed that pneumococci will only bind to nasopharyngeal cells and to this receptor when they are in a particular morphological phase.<sup>69 70</sup> It is hoped that the biochemical basis of this morphological phase change will be elucidated and help to clarify the pneumococcal factors which favour adherence.

#### Transition from colonisation to pneumonia and invasive disease

The factors which permit pneumococci to spread beyond the nasopharynx are poorly characterised and are likely to vary depending on the virulence of the organism, the state of the host's defences, and the existence of preceding viral infection. Spread to the lungs probably occurs by aspiration<sup>71</sup> which is aided by impairment of the cough reflex, by increased production of mucus (in which pneumococci also replicate<sup>61</sup>), and by impairment of the mucociliary escalator. Whilst all of these can be caused by host related disorders, the pneumococcus itself can contribute by causing impaired ciliary activity, and by pneumolysin dependent disruption of the epithelial type junctions which are essential for the production of normal mucus.<sup>54 72</sup> Both influenza virus and adenovirus enhance in vitro adherence of *S pneumoniae* to respiratory tract epithelial cells.<sup>60</sup>

Recent studies have shown that *S pneumoniae* can adhere to human bronchial epithelial cells.<sup>73</sup> However, the molecular basis of this interaction is not known, nor is its pathogenetic significance, either in pneumonia or in acute or chronic bronchitis. In healthy individuals the bronchi are sterile, but in patients with chronic bronchitis the organism can be present in the lower respiratory tract even in between exacerbations.<sup>74</sup> To date, our understanding of this form of colonisation is poor, as is the relationship between this and acute exacerbations of chronic obstructive pulmonary disease (COPD). Attempts to evaluate the role of *S pneumoniae* have been hampered by the presence of colonising organisms in the nasopharynx and lower respiratory tract and the lack of a standard definition of an acute exacerbation of COPD.<sup>74</sup>

Within the alveoli pneumococci initially adhere to the alveolar wall, probably preferentially to alveolar type II cells.<sup>75</sup> They also spread very rapidly to the blood, suggesting an aggressive capacity to cross the vascular endothelial cells.<sup>71</sup> Attachment of *S pneumoniae* to resting type II lung cells and vascular endothelial cells



is mediated by host cell glycoconjugate receptors with specific disaccharides (N-acetyl-D-glucosamine  $\beta$ 1-4 galactose, GalNAc  $\beta$ 1-4 Gal, or N-acetyl galactosamine  $\beta$ 1-3 galactose, GalNAc  $\beta$ 1-4 Gal) as the minimum receptor subunits. These galactose based disaccharides are similar to, but distinct from, the glucosamine based disaccharide receptor on nasopharyngeal epithelial cells.<sup>75</sup> Pneumococcal binding to these glycoconjugates is mediated both by phosphorylcholine in the cell wall<sup>76</sup> and by pneumococcal proteins. By using libraries of genetic mutants of *S pneumoniae* with defects in specific proteins,<sup>77</sup> a number of putative protein adhesins have been identified.<sup>35 48-52</sup> However, it is likely that many of these proteins, some of which function as enzymes, act indirectly in this role.<sup>48</sup>

When these lung and endothelial cells are activated, however, there is evidence that the pneumococcus shifts its target to a new receptor, that for platelet activating factor (PAF).

Cundell *et al*<sup>78</sup> found that cytokine activation of endothelial cells and lung cells was associated with a marked increase in expression of PAF receptor compared with resting cells, and that pneumococci adhered to the receptor via phosphorylcholine, a determinant which it shares with PAF, with both increased adherence of pneumococci to the cells and increased invasion of the cells. Only virulent pneumococci engaged the PAF receptor, and the sequence of events could be arrested in vitro and in vivo by pretreatment with PAF receptor-specific antagonists. The authors suggested that this may be a critical and potentially reversible step in the transition from asymptomatic colonisation to invasive disease.

### Development and resolution of pneumonia

The earliest histological abnormality in pneumococcal pneumonia is engorgement of the alveoli with proteinaceous fluid and red blood cells<sup>67</sup> due to damage and increased permeability of the alveolar-capillary barrier. Fibrin also forms, due to the induction of procoagulant activity on human endothelial cells by *S pneumoniae*, reducing the blood supply to the affected area and also permitting neutrophils to trap the pneumococci against the surface of pulmonary cells.<sup>67 79</sup> A range of studies involving animal models of pneumonia and in vitro studies with monolayers of type I alveolar epithelial cells and vascular endothelial cells have shown that these cells, and the tight junctions between them, can be damaged either by pneumococcal cell wall products<sup>32</sup> or by pneumolysin,<sup>57 58</sup> though there is evidence that, with cell wall products, the changes are mediated by tumour necrosis factor (TNF) from the host since the cytopathic effect on endothelial cells can be abrogated by anti-TNF antibodies.<sup>23 32</sup> These events do not require the presence of neutrophils<sup>80</sup> and, as with other aspects of the inflammatory process, there is no evidence that the pneumococcal capsule plays a part.<sup>23</sup>

Clearance of pneumococci from the alveoli by phagocytosis is dependent on

complement<sup>31 65</sup> and facilitated by anticapsular antibody,<sup>35 65</sup> both of which function opsonically. Resident alveolar macrophages play a phagocytic role in the early stage of infection<sup>81</sup> but after 1-2 hours they are joined and quickly outnumbered by the more efficient polymorphonuclear leucocytes (PMNs).<sup>79</sup> The PMNs are sequestered into capillaries throughout the lung but migrate into alveoli only at the site of infection.<sup>79</sup> The chemotaxins involved include the complement factor C-5a<sup>82</sup> which is released by direct activation of complement by pneumococcal cell wall teichoic acid,<sup>31</sup> and both interleukin 8 (IL-8)<sup>83</sup> and leukotriene B<sub>4</sub><sup>84</sup> released from alveolar macrophages. However, the molecular pathway by which neutrophils migrate from the vascular to the alveolar space has not been established. Unlike many processes involving sequestration and migration of neutrophils, the process does not depend on selectins<sup>85 86</sup> and it is also probably independent of CD11-CD18 adhesion molecules,<sup>87 88</sup> even though there is evidence of upregulation of some of these adhesion molecules in community acquired pneumonia.<sup>89</sup> This lack of dependence on selectins and CD11-CD18 appears partly to reflect anatomical differences between the pulmonary and the systemic microvasculature but also probably differences between pneumococci and other organisms.<sup>68 86</sup>

The increased demand for PMNs in the blood and lungs is met by increased release of new cells from the bone marrow.<sup>79</sup> These cells are immature,<sup>90</sup> having had a shorter transit time in the bone marrow<sup>91</sup> and, as such, are larger and less deformable than mature PMNs. It has been observed that only a small proportion of these immature cells migrate into the alveoli, leaving an excess in the pulmonary vascular space.<sup>90</sup> Since immature PMNs, when stimulated, have a greater potential to release oxygen radicals and proteolytic enzymes than mature cells, it has been suggested that pneumococcal bacteraemia may result in intravascular activation of these cells, leading to lung injury, and possibly providing an explanation for the high mortality associated with bacteraemia in pneumococcal pneumonia.<sup>90</sup>

However, one of the remarkable features of pneumococcal pneumonia is that the lungs of patients who recover from the disease almost invariably return to normal, irrespective of the severity of the systemic or pulmonary condition when the disease was at its peak. Whilst this has been recognised since early descriptions of the disease,<sup>92 93</sup> it is only recently that the details of possible contributory mechanisms have emerged. It has been found, for example, that alveolar macrophages from patients with community acquired pneumonia are hyporesponsive to stimulation, with less release of pro-inflammatory cytokines than either circulating monocytes from the same patients or from alveolar macrophages from healthy control subjects.<sup>94</sup> This is in keeping with the general tendency of alveolar macrophages to reduce or dampen down the immune response within the alveoli.<sup>95</sup> It has also been observed that viable *S pneumoniae* in suspen-

sion inhibit the release of reactive oxygen species from PMNs, in contrast to *Staphylococcus aureus* and *Klebsiella pneumoniae* which each stimulate PMNs to release increased amounts of extracellular reactive oxygen species.<sup>46 47</sup> This inhibition of the neutrophil oxidative burst by *S pneumoniae* may help to explain why the pneumococcus rarely causes permanent lung damage whereas pneumonia caused by the other two organisms is often associated with abscess formation and fibrosis. Furthermore, in experimental pneumococcal pneumonia it has been shown that PMN recruitment to the lungs is complete within 24 hours,<sup>92 96</sup> that PMN activity as measured by the uptake of a radiolabelled glucose analogue ceases within 48 hours,<sup>97</sup> and that, before PMNs are cleared by macrophages, they readily undergo apoptosis—that is, death in a programmed or “physiological” fashion rather than releasing their potentially toxic products on death.<sup>92 93</sup> All of these aspects of neutrophil activity will reduce the chances of lung damage.

#### **Bacteraemia, systemic antibody and the role of the spleen**

The risks of bacteraemia and death from pneumococcal pneumonia are greatly reduced by the presence of type specific anticapsular antibody in serum.<sup>35</sup> Generation of the antibody was shown by early investigators to herald recovery from invasive pneumococcal disease, and the first effective treatment for pneumococcal pneumonia was provided by passive immunisation with specific antisera.<sup>1</sup> Antibodies to other pneumococcal components such as cell wall polysaccharide, pneumolysin, PspA, and other proteins are also produced in the course of colonisation or infection but their protective capacity is less.<sup>35</sup>

However, in the course of pneumococcal infection, antibody is produced late in the sequence of host defences, usually on the 5th or 6th day of disease,<sup>98</sup> and not all studies have suggested that this defence is necessarily adequate or the important one. For example, opsonophagocytosis of *S pneumoniae* can occur in vitro in the absence of specific antibody,<sup>99</sup> and in vivo recovery from pneumococcal pneumonia not treated with antibiotics can occur in the pre-antibody phase.<sup>98</sup> Furthermore, pneumococcal bacteraemia has been observed despite high levels of preformed anticapsular antibody and with either a fall or no change in the convalescent sera.<sup>63 64</sup> Although the accuracy of anticapsular antibody levels has been questioned in recent years because of the co-detection of antibodies to cell wall polysaccharide in many immunoassays,<sup>100</sup> this is unlikely to provide a full explanation for the lack of a relationship between antibody levels and clinical disease in these studies.

In the absence of type specific antibody the clearance of pneumococci has been shown to rely on the reticuloendothelial system, with the macrophages of the spleen playing a greater relative role than those of the liver.<sup>101</sup> This, as well as the spleen's role in enhancing antibody production,<sup>102</sup> presumably accounts for the increased risk of mortality from pneumococcal

bacteraemia in asplenic and functionally asplenic patients. In an experimental model of pneumococcal pneumonia the survival rate of splenectomised mice after an aerosol challenge of *S pneumoniae* was improved more than threefold by administration of granulocyte colony stimulating factor (G-CSF).<sup>103</sup> The improvement occurred when G-CSF was administered from 24 hours before to three days after the challenge and was associated with a rise in the number of circulating neutrophils. The therapeutic implications of this are still unknown.<sup>104</sup>

#### **Role of cytokines**

The molecular and cellular events which make up the host's response to infection are regulated by cytokines, a network of low molecular weight polypeptides secreted by many cells including the alveolar macrophage. However, whilst cytokines can act as beneficial chemical mediators in the course of inflammatory and immunological processes, they can also be harmful.<sup>105 106</sup> Recent studies in patients with (mainly Gram negative) sepsis and/or the adult respiratory distress syndrome (ARDS) suggest that the net effects depend on the balance between pro-inflammatory cytokines such as TNF- $\alpha$  and IL-1 and anti-inflammatory cytokines such as IL-10, and that disturbance of this balance can be associated with a poor prognosis.<sup>107 108</sup> The question which arises is whether different cytokine responses account for different clinical outcomes in pneumococcal disease, and specifically whether cytokine imbalance can account for the currently unexplained systemic upset of pneumococcal pneumonia and the many deaths which are unexplained by respiratory failure.

Both clinical and experimental studies have shown that there is a brisk local cytokine response to inhaled *S pneumoniae*. In two studies of unilateral community acquired pneumonia, for example, one in which TNF- $\alpha$ , IL-1 and IL-6 levels were measured<sup>94</sup> and one involving measurement of IL-8,<sup>83</sup> the cytokine response was greater in the involved lung than in the paired non-involved lung and, with the exception of IL-6, there was no rise in the circulating levels of these cytokines. Similarly, in an animal model in which mice became ill 16–24 hours after nasal inoculation of *S pneumoniae* and died of bacteraemic pneumococcal pneumonia within five days, TNF- $\alpha$ , IL-6, and IL-10 levels in the lungs all rose within 12 hours and remained high at 72 hours, but IL-6 was the only cytokine of the three measured which was significantly raised in the blood.<sup>109–111</sup> Tasaka *et al* have also recently shown increased pulmonary expression of the gene for interferon  $\gamma$  (IFN- $\gamma$ ) early in the course of experimental pneumococcal pneumonia.<sup>112</sup>

However, evidence of the cytokine response is not confined to the lung. In addition to IL-6 being raised in the serum, circulating levels of G-CSF are raised during the acute phase of respiratory tract infections.<sup>113</sup> Nevertheless, G-CSF, which probably contributes to the increased release of neutrophils from the bone

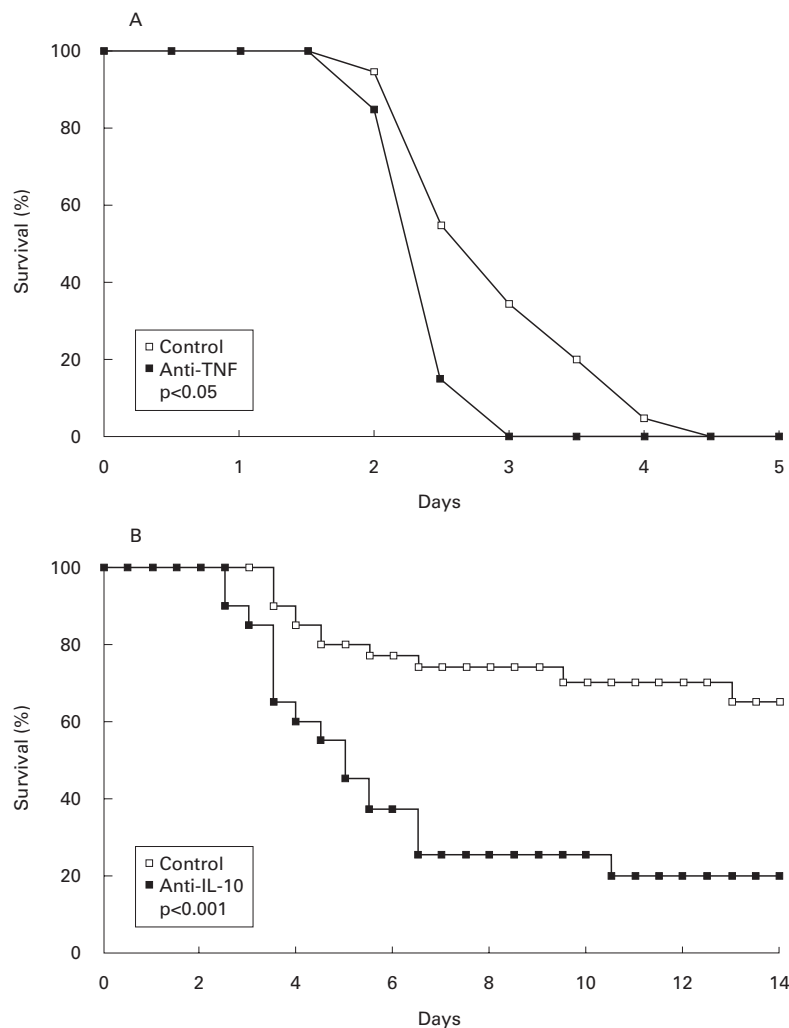


Figure 3 Effects of monoclonal antibodies against (A) the pro-inflammatory cytokine TNF- $\alpha$  and (B) the anti-inflammatory cytokine IL-10 on survival in a murine model of pneumococcal pneumonia. Lower numbers of *S pneumoniae* were used in the experiments with IL-10. In both series of experiments death of the mice corresponded with the number of surviving pneumococci isolated from blood and lungs. Modified from references 109 and 110.

marrow,<sup>90</sup> is likely to originate in the lung during pneumonia for Tazi *et al*<sup>14</sup> found that alveolar macrophages from patients with pneumonia produce G-CSF spontaneously, in contrast to alveolar macrophages from healthy subjects which produce G-CSF only when stimulated.

More direct evidence that the cytokines contribute to host defence against *S pneumoniae* has come from passive immunisation experiments with monoclonal antibodies against the cytokines (fig 3) and studies with "knock out" mice which have genes for individual cytokines deleted. In a murine model of pneumococcal pneumonia, for example, intranasal administration of IL-10 in combination with *S pneumoniae* resulted in decreased lung concentrations of TNF- $\alpha$  and IFN- $\gamma$ , increased bacterial counts in lungs and blood, and early lethality. Conversely, pretreatment of mice with an anti-IL-10 antibody was associated with increased lung levels of TNF- $\alpha$  and IFN- $\gamma$ , reduced bacterial counts in lungs and plasma 40 hours after the inoculation, and prolonged survival.<sup>109</sup> In another series of experiments mice passively immunised against the pro-inflammatory cytokine TNF- $\alpha$  had increased

numbers of *S pneumoniae* isolated from the lungs and died earlier than non-treated mice.<sup>110</sup> Using the same model of pneumococcal pneumonia, mice deficient in the gene for IL-6 had increased lung levels both of the pro-inflammatory cytokines TNF- $\alpha$ , IL-1 $\beta$  and IFN- $\gamma$  and of the anti-inflammatory cytokine IL-10, increased numbers of *S pneumoniae* in the lungs, and reduced survival compared with controls, indicating a net protective effect of IL-6.<sup>111</sup> Taken together, along with similar cytokine studies in animal models of pneumonia involving other organisms,<sup>104 115-117</sup> these results suggest that the compartmentalised cytokine response of pneumonia contributes to host defence, and that interference with the cytokine network in such a way that pulmonary inflammation is reduced is likely to be harmful to the host.

The relationship between cytokine profiles and clinical outcome in pneumonia remains unclear.<sup>118-123</sup> For example, in two studies in which TNF- $\alpha$  was measured in serum there was no relationship with patient outcome<sup>118 119</sup> whilst in another study patients judged to be critically ill with pneumonia had higher TNF- $\alpha$  levels than patients with pneumonia who were not critically ill.<sup>120</sup> The preliminary results of another study, confined to patients with community acquired pneumonia, found that IL-10 levels were significantly more likely to be detectable in patients with systemic inflammatory response syndrome than in patients who did not have this syndrome.<sup>121</sup> In two other studies, mainly concerned with ARDS but also including patients with pneumonia as a control group, plasma levels of IL-6 and TNF- $\alpha$  in pneumonia correlated with the degree of lung injury, and there was also a significant relationship between plasma levels of the cytokines and death rate in the study, though this was only significant when patients with ARDS and with pneumonia were grouped together.<sup>122 123</sup>

In view of the complexity of the cytokine network and the large number of variables involved in clinical studies, it is perhaps not surprising that the clinical picture remains unclear. For example, the timing of the measurements in relation to the onset of infection, the presence of cytokine binding proteins, and the technical problem of ex vivo release of cytokines from clinical material can all make interpretation difficult and may account for differences in results between the studies.<sup>124 125</sup> Furthermore, only a small number of cytokines have been studied to date and in only a small number of patients. Also, studies relating cytokine profiles to clinical outcome have largely involved cytokine measurements in blood even though the primary immune response is known to be in the lung.<sup>83 94</sup> It should also be noted that *S pneumoniae* was cultured in only a minority of patients in some studies, and that in other studies patients with pneumococcal pneumonia were grouped with patients who had other pulmonary conditions. It is possible that different infecting organisms and different pulmonary disorders will be associated with different cytokine profiles.<sup>126</sup> Nevertheless, despite the difficulties involved in studies of this



kind, clinical research in this area will be needed both to confirm hypotheses arising from experimental studies and to identify whether there are clinically important differences between individuals in cytokine production, as suggested by recent studies in meningococcal disease.<sup>127</sup>

### Conclusion

The interactions between the pneumococcus and the host are complex. However, the pathogenesis of pneumococcal pneumonia is beginning to be understood at the molecular level, and recent studies have opened the door to the prospect of novel approaches to the prevention and treatment of the condition.

In the foreseeable future conjugate vaccines with pneumococcal proteins are likely to be the most important practical development against *S pneumoniae*. It is expected that they will provide the first reliable method of protecting children from pneumococcal pneumonia, and possibly the first protection against *S pneumoniae* that is independent of capsular serotype.

In established pneumococcal pneumonia and bacteraemia there is increasing evidence that cytokine imbalance plays an important role in determining outcome. Although progress is limited by the complexity of the cytokine network and the lack of reliable biological markers which can identify the patients most likely to gain potential benefit from cytokine intervention,<sup>128</sup> studies in animal models have shown that beneficial effects can be achieved by immunomodulation of this kind, and it is in this area that future research is likely to be targeted.

The author thanks Mrs Susan Allsopp, Mrs Katharine Bale and Dr Adrian Kendrick for help in the preparation of this manuscript.

- Austrian R. Pneumococcus: the first one hundred years. *Rev Infect Dis* 1981;3:183-189.
- Macfarlane J, Finch R, Ward M, et al. Hospital study of adult community-acquired pneumonia. *Lancet* 1982;ii:255-8.
- British Thoracic Research Committee. Community-acquired pneumonia in adults in British hospitals in 1982-1983: a survey of aetiology, mortality, prognostic factors and outcome. *Q J Med* 1987;62:195-220.
- Fang DG, Fine M, Orloff J, et al. New and emerging etiologies for community-acquired pneumonia with implications for therapy. *Medicine* 1990;69:307-16.
- Austrian R, Gold J. Pneumococcal bacteraemia with especial reference to bacteremic pneumococcal pneumonia. *Ann Intern Med* 1964;120:771-83.
- Austrian R. Some observations on the pneumococcus and on the current status of pneumococcal disease and its prevention. *Rev Infect Dis* 1981;3: S1-17.
- Aszkenasy OM, George RC, Begg NT. Pneumococcal bacteraemia and meningitis in England and Wales 1982-1992. *Commun Dis Rep* 1994;5:R45-50.
- Giesecke J, Fredlund H. Increase in pneumococcal bacteraemia in Sweden. *Lancet* 1997;349:699-70.
- Editorial. Acute respiratory infections in under-fives: 15 million deaths a year. *Lancet* 1985;ii: 699-701.
- Janoff EN, Breiman RF, Daley CL, et al. Pneumococcal disease during HIV infection. *Ann Intern Med* 1992;117:314-24.
- Appelbaum PC. Epidemiology and in vitro susceptibility of drug-resistant *Streptococcus pneumoniae*. *Pediatr Infect Dis J* 1996;15:932-9.
- Pallarés R, Linares J, Vadillo M, et al. Resistance to penicillin and cephalosporins and mortality from severe pneumococcal pneumonia in Barcelona, Spain. *N Engl J Med* 1995;333:474-80.
- Hofmann J, Cetrion MS, Farley MM, et al. The prevalence of drug-resistant *Streptococcus pneumoniae* in Atlanta. *N Engl J Med* 1995;333:481-6.
- Johnson AP, Speller DCE, George RC, et al. Prevalence of antibiotic resistance and serotypes in pneumococci in England and Wales: results of observational surveys in 1990 and 1995. *BMJ* 1996;312:1454-6.
- Woodhead MA. *Antibiotic resistant organisms in respiratory disease*. London: Lung and Information Agency, 1998. Fact sheet 98/1.
- Shapiro ED, Berg AT, Austrian R, et al. The protective efficacy of polyvalent pneumococcal polysaccharide vaccine. *N Engl J Med* 1991;325:1453-60.
- Perry FE, Catterall JR. The pneumococcus: host-organism interactions and their implications for immunotherapy and immunoprophylaxis. *Thorax* 1994;49:946-50.
- George RC. The epidemiology of pneumococcal disease. In: Mayon-White RT, ed. *The clinical impact of pneumococcal disease and strategies for its prevention*. London: Royal Society of Medicine, 1995: 1-7.
- Dorca J, Manresa F. Community-acquired pneumonia: initial management and empirical treatment. In: Torres A, Woodhead M, eds. *Pneumonia. Eur Respir Monogr* 1997;3: 36-55.
- Wong CA, Macfarlane JT. Prevention of community-acquired pneumococcal and influenza infection in adults: a re-evaluation of vaccination. In: Torres A, Woodhead M, eds. *Pneumonia. Eur Respir Monogr* 1997;3:56-81.
- Avery OT, Dubos R. The protective action of a specific enzyme against type 3 pneumococcus infection in mice. *J Exp Med* 1931;54:73-89.
- Kelly T, Dillard PJ, Yother J. Effect of genetic switching of capsular type on virulence of *Streptococcus pneumoniae*. *Infect Immun* 1994;62:1813-9.
- Tuomanen E, Rich R, Zak O. Induction of pulmonary inflammation by components of the pneumococcal cell surface. *Am Rev Respir Dis* 1987;135:869-74.
- Henrichsen J. Six newly recognised types of *Streptococcus pneumoniae*. *J Clin Microbiol* 1995;33:2759-62.
- Kalin M. Pneumococcal serotypes and their clinical relevance. *Thorax* 1998;53:159-62.
- Knecht JC, Schiffman GR, Austrian R. Some biological properties of pneumococcus type 37 and the chemistry of its capsular polysaccharide. *J Exp Med* 1970;132:475-87.
- Dillard JP, Vandersea MW, Yother J. Characterisation of the cassette containing genes for type 3 capsular polysaccharide biosynthesis in *Streptococcus pneumoniae*. *J Exp Med* 1995;181:973-83.
- Garcia E, Arrecubieta C, Monars R, et al. A functional analysis of the *Streptococcus pneumoniae* genes involved in the synthesis of type 1 and type 3 capsular polysaccharides. *Microb Drug Resist* 1997;3:73-88.
- Sniadack DH, Schwartz B, Lipman H, et al. Potential interventions for the prevention of childhood pneumonia: geographic and temporal differences in serotype and serological distribution of sterile site pneumococcal isolates from children—implications for vaccine strategies. *Pediatr Infect Dis J* 1995;14:503-10.
- Robbins JB, Austrian R, Lee C, et al. Considerations for formulating the second-generation pneumococcal capsular polysaccharide vaccine with emphasis on the cross-reactive types within groups. *J Infect Dis* 1983;148:1136-59.
- Winkelstein JA, Tomasz A. Activation of the alternative complement pathway by pneumococcal cell wall teichoic acid. *J Immunol* 1978;120:174-8.
- Geelen S, Bhattacharyya, Tuomanen E. The cell wall mediates pneumococcal attachment to and cytopathology in human endothelial cells. *Infect Immun* 1993;61:1538-43.
- Heumann D, Barras C, Severin C, et al. Gram-positive cell walls stimulate synthesis of tumor necrosis factor and interleukin-G by human monocytes. *Infect Immun* 1994;62: 2715-21.
- Tomasz A. Choline in the cell wall of a bacterium: novel type of polymer-linked choline in *Pneumococcus*. *Science* 1967; 157:694-7.
- Alonso de Velasco E, Verheul AFM, Verhoef J, et al. *Streptococcus pneumoniae*: virulence factors, pathogenesis, and vaccines. *Microbiol Rev* 1995;59:591-603.
- Paton JC, Andrew PW, Boulnois GJ, et al. Molecular analysis of the pathogenicity of *Streptococcus pneumoniae*: the role of pneumococcal proteins. *Annu Rev Microbiol* 1993;47:89-115.
- Paton JC, Berry AM, Lock RA. Molecular analysis of putative pneumococcal virulence proteins. *Microbiol Drug Resist* 1997;3:1-10.
- Watson DA, Musher DM, Verhoef J. Pneumococcal virulence factors and host immune responses to them. *Eur J Clin Microbiol Infect Dis* 1995;14:479-90.
- Briles DE, Tart RC, Wu HY, et al. Systemic and mucosal protective immunity to pneumococcal surface protein A. *Ann NY Acad Sci* 1996;797:118-26.
- Kelly R, Greiff D. Toxicity of pneumococcal neuraminidase. *Infect Immun* 1970;2:115-7.
- Scanlon KL, Diven WF, Glew RH. Purification and properties of *Streptococcus pneumoniae* neuraminidase. *Enzyme* 1989;41:143-50.
- Humphrey JH. Hyaluronidase production by pneumococci. *J Pathol Bacteriol* 1948;55:273-5.
- Verad M, Schutzbank T, Janoff A. Inhibitors of human neutrophil elastase in extracts of *Streptococcus pneumoniae*. *Am Rev Respir Dis* 1984;130:1118-24.
- Killian M, Mestecky J, Schrohenloher RE. Pathogenic species of the genus *Haemophilus* and *Streptococcus pneumoniae* produce immunoglobulin A1 protease. *Infect Immun* 1979;26:143-9.
- Courtney HS. Degradation of connective tissue proteins by serine proteases from *Streptococcus pneumoniae*. *Biochem Biophys Res Commun* 1991;175:1023-8.
- Perry FE, Elson CJ, Greenham LW, et al. Interference with the oxidative response of neutrophils by *Streptococcus pneumoniae*. *Thorax* 1993;48:364-9.

- 47 Perry FE, Elson CJ, Mitchell TJ, *et al.* Characterisation of an oxidative response inhibitor produced by *Streptococcus pneumoniae*. *Thorax* 1994;**49**:676–83.
- 48 Cundell DR, Pearce BJ, Sandros J, *et al.* Peptide permeases from *Streptococcus pneumoniae* affect adherence to eucaryotic cells. *Infect Immun* 1995;**63**:2493–8.
- 49 Berry AM, Paton JC. Sequence heterogeneity of PsaA, a 37-kilodalton putative adhesin essential for virulence of *Streptococcus pneumoniae*. *Infect Immun* 1996;**64**:5255–62.
- 50 Spellerberg B, Cundell DR, Sandros J, *et al.* Pyruvate oxidase as a determinant of virulence in *Streptococcus pneumoniae*. *Mol Microbiol* 1996;**19**:803–13.
- 51 Wizemann TM, Moskovitz J, Pearce BJ, *et al.* Peptide methionine sulphazide reductase contributes to the maintenance of adhesins in three major pathogens. *Proc Natl Acad Sci* 1996;**93**:7985–90.
- 52 Dintilhac A, Alloing G, Granadel C, *et al.* Competence and virulence of *Streptococcus pneumoniae*: Adc and PsaA mutants exhibit a requirement for Zn and Mn resulting from inactivation of putative ABC metal permeases. *Mol Microbiol* 1997;**25**:727–39.
- 53 Feldman C, Munro NC, Jeffery PK, *et al.* Pneumolysin induces the salient histological features of pneumococcal infection in the rat lung in vivo. *Am J Respir Cell Mol Biol* 1991;**5**:416–23.
- 54 Rayner CFJ, Jackson AD, Rutman A, *et al.* Interactions of pneumolysin-sufficient and -deficient isogenic variants of *Streptococcus pneumoniae* with human respiratory mucosa. *Infect Immun* 1995;**63**:442–7.
- 55 Benton KA, Everson MP, Briles DE. A pneumolysin-negative mutant of *Streptococcus pneumoniae* causes chronic bacteraemia rather than acute sepsis in mice. *Infect Immun* 1995;**63**:448–55.
- 56 Berry AM, Alexander JE, Mitchell TJ, *et al.* Effect of defined point mutations in the pneumolysin gene on the virulence of *Streptococcus pneumoniae*. *Infect Immun* 1995;**63**:1969–74.
- 57 Rubins JB, Charboneau D, Paton JC, *et al.* Dual function of pneumolysin in the early pathogenesis of murine pneumococcal pneumonia. *J Clin Invest* 1995;**95**:142–50.
- 58 Rubins JB, Charboneau D, Faching C, *et al.* Distinct roles for pneumolysin's cytotoxic and complement activities in the pathogenesis of pneumococcal pneumonia. *Am J Respir Crit Care Med* 1996;**153**:1339–46.
- 59 Canvin JR, Marvin AP, Sivakumaran M, *et al.* The role of pneumolysin and autolysin in the pathology of pneumonia and septicaemia in mice infected with a type 2 pneumococcus. *J Infect Dis* 1995;**172**:119–23.
- 60 Hakansson A, Carlstedt I, Davies J, *et al.* Aspects on the interaction of *Streptococcus pneumoniae* and *Haemophilus influenzae* with human respiratory tract mucosa. *Am J Respir Crit Care Med* 1996;**154**:S187–9.
- 61 Feldman C, Read R, Rutman A, *et al.* The interaction of *Streptococcus pneumoniae* with intact human respiratory mucosa in vitro. *Eur Respir J* 1992;**5**:576–85.
- 62 Andersson B, Eden CS. Mechanisms of pneumococcal attachment. *Monogr Allergy* 1988;**24**:44–5.
- 63 Gray BM, Dillon HC. Natural history of pneumococcal infections. *Pediatr Infect Dis J* 1989;**8**:S23–5.
- 64 Riley ID, Douglas RM. An epidemiological approach to pneumococcal disease. *Rev Infect Dis* 1981;**3**:233–45.
- 65 Gillespie SH. Aspects of pneumococcal infection including bacterial virulence, host response and vaccination. *J Med Microbiol* 1989;**28**:237–48.
- 66 Pons J L, Mandement M N, Martin E, *et al.* Clonal and temporal patterns of nasopharyngeal penicillin-susceptible and penicillin resistant *Streptococcus pneumoniae* strains in children attending a day care center. *J Clin Microbiol* 1996;**34**:3218–22.
- 67 Tuomanen EI, Austrian R, Masure RH. Pathogenesis of pneumococcal infection. *N Engl J Med* 1995;**332**:1280–4.
- 68 Musher DM, Groover JE, Reichler MR, *et al.* Emergence of antibody to capsular polysaccharides of *Streptococcus pneumoniae* during outbreaks of pneumonia: association with nasopharyngeal colonization. *Clin Infect Dis* 1997;**24**:441–6.
- 69 Weiser J N, Austrian R, Sreenivasan P K, *et al.* Phase variation in pneumococcal opacity: relationship between colonial morphology and nasopharyngeal colonization. *Infect Immun* 1994;**62**:2582–9.
- 70 Cundell D, Weiser JN, Shen J, *et al.* Relationship between colonial morphology and adherence of *Streptococcus pneumoniae*. *Infect Immun* 1995;**63**:757–61.
- 71 Rake G. Pathogenesis of pneumococcus infections in mice. *J Exp Med* 1935;**63**:191–209.
- 72 Wilson R, Dowling RB, Jackson AD. The biology of bacterial colonization and invasion of the respiratory mucosa. *Eur Respir J* 1996;**9**:1523–30.
- 73 Adamou JE, Wizemann TM, Barren P, *et al.* Adherence of *Streptococcus pneumoniae* to human bronchial epithelial cells (BEAS-2B). *Infect Immun* 1998;**66**:820–2.
- 74 Murphy TF, Sethi S. Bacterial infection in chronic obstructive pulmonary disease. *Am Rev Respir Dis* 1992;**146**:1067–83.
- 75 Cundell DR, Tuomanen EI. Receptor specificity of adherence of *Streptococcus pneumoniae* to human type II pneumocytes and vascular endothelial cells in vitro. *Microbial Pathogenesis* 1994;**17**:361–74.
- 76 Sundberg-Kovamees M, Holme T, Sjogren A. Interaction of the C-polysaccharide of *Streptococcus pneumoniae* with the receptor asialo-GM1. *Microbial Pathogenesis* 1996;**21**:223–34.
- 77 Masure HR, Campbell EA, Cundell DR, *et al.* A new genetic strategy for the analysis of virulence in *Streptococcus pneumoniae*. In: Ferretti JJ, Gilmore MS, Klaenhammer TR, Brown F, eds. *Genetics of streptococci, enterococci and lactococci*. Dev Biol Stand. Vol 85. Basel: Karger, 1995: 251–60.
- 78 Cundell DR, Gerrard NP, Gerrard C, *et al.* *Streptococcus pneumoniae* anchor to activated human cells by the receptor for platelet-activating factor. *Nature* 1995;**377**:435–8.
- 79 Doerschuk CM, Markos J, Koxson HO, *et al.* Quantitation of neutrophil migration in acute bacterial pneumonia in rabbits. *J Appl Physiol* 1994;**77**:2593–9.
- 80 Rich AR, McKee CM. The pathogenicity of a virulent pneumococci for animals deprived of leukocytes. *Bull J Hopkins Hosp* 1939;**64**:434–46.
- 81 Jonsson S, Musher DM, Chapman A, *et al.* Phagocytosis and killing of common bacterial pathogens of the lung by human alveolar macrophages. *J Infect Dis* 1985;**152**:4–13.
- 82 Toews GB, Vial WC. The role of C5 in polymorphonuclear leukocyte recruitment in response to *Streptococcus pneumoniae*. *Am Rev Respir Dis* 1984;**129**:82–6.
- 83 Boutten A, Dehoux MS, Seta N, *et al.* Compartmentalized IL-8 and elastase release within the human lung in unilateral pneumonia. *Am J Respir Crit Care Med* 1996;**153**:336–42.
- 84 Hopkins H, Stull T, von Essen SG, *et al.* Neutrophil chemotactic factors in bacterial pneumonia. *Chest* 1989;**95**:1021–7.
- 85 Mizgerd JP, Meek BB, Kutkoski GJ, *et al.* Selectins and neutrophil traffic: margination and *Streptococcus pneumoniae*-induced emigration in murine lungs. *J Exp Med* 1996;**184**:639–45.
- 86 Doyle NA, Bhagwan SD, Meek BB, *et al.* Neutrophil margination, sequestration, and emigration in the lungs of L-selectin-deficient mice. *J Clin Invest* 1997;**99**:526–33.
- 87 Doerschuk CM, Winn RK, Coxson HO, *et al.* CD18-dependent and -independent mechanisms of neutrophil emigration in the pulmonary and systemic microcirculation of rabbits. *J Immunol* 1990;**144**:2327–33.
- 88 Cabellos C, Macintyre DE, Forrest M, *et al.* Differing roles for platelet-activating factor during inflammation of the lung and sub-arachnoid space. The special case of *Streptococcus pneumoniae*. *J Clin Invest* 1992;**90**:612–8.
- 89 Glynn P, Coakley R, O'Neill S. Soluble and surface adhesion molecules in community acquired pneumonia. *Thorax* 1997;**52**(Suppl 6): A13.
- 90 Lawrence E, van Eeden S, English D, *et al.* Polymorphonuclear leucocyte (PMN) migration in streptococcal pneumonia: comparison of older PMN with those recently released from the marrow. *Am J Respir Cell Mol Biol* 1996;**14**:217–24.
- 91 Terashima T, Wiggs B, English D, *et al.* Polymorphonuclear leucocyte transit times in bone marrow during streptococcal pneumonia. *Am J Physiol* 1996;**271**:L587–92.
- 92 Haslett C. Resolution of acute inflammation and the role of apoptosis in the tissue fate of granulocytes. *Clin Sci* 1992;**83**:639–48.
- 93 Haslett C. Granulocyte apoptosis and inflammatory disease. *Br Med Bull* 1997;**53**:669–83.
- 94 Dehoux MS, Boutten A, Ostinelli J, *et al.* Compartmentalised cytokine production within the human lung in unilateral pneumonia. *Am J Respir Crit Care Med* 1994;**150**:710–6.
- 95 Catterall JR, Sheffield EA. The lung and the immune system. In: Isenberg DA, Spiro SG, eds. *Autoimmune aspects of lung disease*. Basel: Birkhauser Verlag, 1998: 1–21.
- 96 Haslett C, Shen AS, Feldsien DC, *et al.* <sup>111</sup>Indium-labelled neutrophil flux into the lungs of bleomycin-treated rabbits assessed noninvasively by external scintigraphy. *Am Rev Respir Dis* 1989;**140**:756–63.
- 97 Jones HA, Clark RJ, Rhodes CG, *et al.* In vivo measurement of neutrophil activity in experimental lung inflammation. *Am J Respir Crit Care Med* 1994;**149**:1635–9.
- 98 Austrian R. Pneumococci. In: Davis BD, Dulbecco R, Isen HE, Ginsberg HS, eds. *Microbiology*, 3rd edn. Pennsylvania: Harper and Row, 1980: 592–606.
- 99 Musher DM, Chapman AJ, Goree A, *et al.* Natural and vaccine-related immunity to *Streptococcus pneumoniae*. *J Infect Dis* 1986;**154**:245–6.
- 100 Musher DM, Luchi MJ, Watson DA, *et al.* Pneumococcal polysaccharide vaccine in young adults and older bronchitics: determination of IgG responses by ELISA and the effect of adsorption of serum with non type-specific cell wall polysaccharide. *J Infect Dis* 1990;**161**:728–35.
- 101 Brown EJ, Hosea SW, Frank MM. The role of antibody and complement in the reticuloendothelial clearance of pneumococci from the blood stream. *Rev Infect Dis* 1983;**5**(Suppl 4):S797–805.
- 102 Cohn DA, Schiffman G. Immunoregulatory role of the spleen in the antibody responses to pneumococcal polysaccharide antigens. *Infect Immun* 1987;**55**:1375–80.
- 103 Herbert JC, O'Reilly M, Gamelli RL. Protective effect of recombinant human granulocyte colony-stimulating factor against pneumococcal infections in splenectomized mice. *Arch Surg* 1990;**125**:1075–8.
- 104 Nelson S, Mason CM, Kolls J, *et al.* Pathophysiology of pneumonia. *Clin Chest Med* 1995;**16**:1–12.
- 105 Malloy RG, Mannick JA, Rodrick ML. Cytokines, sepsis and immunomodulation. *Br J Surg* 1993;**80**:289–97.
- 106 Natanson C, Hoffman WD, Suffredini AF, *et al.* Selected treatment strategies for septic shock based on proposed mechanisms of pathogenesis. *Ann Intern Med* 1994;**120**:771–83.



- 107 Donnelly SC, Strieter RM, Reid PT, *et al.* The association between mortality rates and decreased concentrations of interleukin-10 and interleukin-1 receptor antagonist in the lung fluids of patients with the adult respiratory distress syndrome. *Ann Intern Med* 1996;**125**:191-6.
- 108 van Dissel JT, van Langevelde P, Westendorp RGJ, *et al.* Anti-inflammatory cytokine profile and mortality in febrile patients. *Lancet* 1998;**351**:950-3.
- 109 van der Poll T, Marchant A, Keogh CV, *et al.* Interleukin-10 impairs host defense in murine pneumococcal pneumonia. *J Infect Dis* 1996;**174**:994-1000.
- 110 van der Poll T, Keogh CV, Buurman WA, *et al.* Passive immunisation against tumor necrosis factor  $\alpha$  impairs host defense during pneumococcal pneumonia in mice. *Am J Respir Crit Care Med* 1997;**155**:603-8.
- 111 van der Poll T, Keogh CV, Guirao X, *et al.* Interleukin-6 gene-deficient mice show impaired defense against pneumococcal pneumonia. *J Infect Dis* 1997;**176**:439-44.
- 112 Tasaki S, Warnock RA, Blain GC, *et al.* Interferon- $\gamma$  gene expression in bacterial pneumonia in mice. *Am J Respir Crit Care Med* 1998;**157**(Suppl):A863.
- 113 Kawakami M, Tsutsumi H, Kumakawa T, *et al.* Levels of serum granulocyte colony-stimulating factor in patients with infections. *Blood* 1990;**76**:1962-4.
- 114 Tazi A, Nioche S, Chastre J, *et al.* Spontaneous release of granulocyte colony-stimulating factor (G-CSF) by alveolar macrophages in the course of bacterial pneumonia and sarcoidosis: endotoxin-dependent and endotoxin-independent G-CSF release by cells recovered by bronchoalveolar lavage. *Am J Respir Cell Mol Biol* 1991;**4**:140-7.
- 115 Greenberger MJ, Strieter RM, Kunkel SL, *et al.* Neutralisation of IL-10 increases survival in a murine model of *Klebsiella pneumoniae*. *J Immunol* 1995;**155**:722-9.
- 116 Greenberger MJ, Strieter RM, Kunkel SL, *et al.* Neutralisation of macrophage inflammatory protein-2 attenuates neutrophil recruitment and bacterial clearance in murine *Klebsiella pneumoniae*. *J Infect Dis* 1996;**173**:159-65.
- 117 Greenberger MJ, Kunkel SL, Strieter RM, *et al.* IL-12 gene therapy protects mice in lethal *Klebsiella pneumoniae*. *J Immunol* 1996;**157**:3006-12.
- 118 Moussa K, Michie HJ, Cree IA, *et al.* Phagocyte function and cytokine production in community acquired pneumonia. *Thorax* 1994;**49**:107-11.
- 119 Marik P, Kraus P, Bribante J, *et al.* Hydrocortisone and tumor necrosis factor in severe community-acquired pneumonia. *Chest* 1993;**104**:389-92.
- 120 Puren AJ, Feldman C, Savage N, *et al.* Patterns of cytokine expression in community-acquired pneumonia. *Chest* 1995;**107**:1342-9.
- 121 Glynn P, Coakley R, O'Neill S. Systemic IL-6 and IL-10 levels in community acquired pneumonia. *Thorax* 1997;**52**(Suppl 6):A13.
- 122 Chollet-Martin S, Montravers P, Gibert CG, *et al.* High levels of interleukin-8 in the blood and alveolar spaces of patients with pneumonia and adult respiratory distress syndrome. *Infect Immun* 1993;**61**:4553-9.
- 123 Chollet-Martin S, Montravers P, Gibert CG, *et al.* Sub-population of hyperresponsive polymorphonuclear neutrophils in patients with adult respiratory distress syndrome. *Am Rev Respir Dis* 1992;**146**:990-6.
- 124 Cannon JG, Nerad JL, Poutsiaa DD, *et al.* Measuring circulating cytokines. *J Appl Physiol* 1993;**75**:1892-7.
- 125 Dinarello CA, Cannon JG. Cytokine measurements in septic shock. *Ann Intern Med* 1993;**119**:853-4.
- 126 Chollet-Martin S, Rousset F, Chastre J, *et al.* Cytokines in adult respiratory distress syndrome. *Lancet* 1994;**344**:1440.
- 127 Westendorp RGF, Langermans JAM, Huizinga TWJ, *et al.* Genetic influence on cytokine production and fatal meningococcal disease. *Lancet* 1997;**349**:170-3.
- 128 Vincent J-L. Search for effective immunomodulating strategies against sepsis. *Lancet* 1998;**351**:922-3.