

Anti-interleukin 6 receptor antibody treatment in rheumatic disease

Norihiro Nishimoto, Tadamitsu Kishimoto, Kazuyuki Yoshizaki

Abstract

Interleukin 6 (IL6) is a pleiotropic cytokine with a wide range of biological activities. IL6 transgene into mice gives rise to the abnormalities such as hyper- γ -globulinaemia, thrombocytosis, infiltration of inflammatory cells into the tissues, mesangial cell proliferation of the kidney as well as splenomegaly and lymphadenopathy, which are predictable by the biological functions of IL6 shown in vitro. Continuous overproduction of IL6 is observed in patients with some immune-inflammatory diseases such as Castleman's disease and rheumatoid arthritis that are frequently associated with similar abnormalities to those of IL6 transgenic mice, strongly suggesting the involvement of IL6 in the human diseases. Successful treatment of the model animals for immune-inflammatory diseases with anti-IL6 receptor (IL6R) antibody thus indicates the possible application of IL6 blocking agents to treat the IL6 related immune-inflammatory diseases of humans. In this review, the new therapeutic strategy for Castleman's disease and RA using humanised antibody to human IL6 receptor, MRA, is discussed.

(Ann Rheum Dis 2000;59(suppl I):i21-i27)

As each monoclonal antibody grasps a specific target antigen epitope, it has been widely used as a research device or a diagnostic drug. It was also expected as a "magic bullet" to treat cancer patients, but the attempt to apply monoclonal antibodies to treat cancer patients fell out of favour because of the failure caused by unexpected toxicity in some clinical trials in the late 1980s.¹ Similarly, clinical trials of several antibodies targeted against the blood infection sepsis were halted because the treated patients were found to be more likely to die than untreated patients in the early 1990s.¹ However, after accumulation of knowledge about the function and distribution of target molecules and also after working out new strategies to use chimerised or humanised antibodies of which varying amounts were replaced with human antibody sequences, therapeutic antibodies have begun to be applied to treat patients not only with cancers but also with immune-inflammatory disorders or acute rejection after organ transplantation. Interleukin 6 (IL6) is a pleiotropic cytokine that regulates immunological reactions in host defence, inflammation, haematopoiesis, and oncogenesis.²⁻³ Although IL6 plays important parts in the host immune system, dysregulated over-

production of IL6 causes unfavourable clinical symptoms and laboratory findings in the patients with immune-inflammatory diseases. In this review, pathological significance of IL6 overproduction in immune-inflammatory diseases and the therapeutic approach by blocking IL6 function using humanised anti-IL6 receptor (IL6R) antibody, MRA, are discussed.

Rationale for IL6 blocking treatment in immune-inflammatory diseases

PLEIOTROPIC FUNCTIONS OF IL6

IL6 was originally identified as a B cell differentiation factor (BCDF) in the culture supernatants of mitogen or antigen stimulated peripheral mononuclear cells, which induced B cells to produce immunoglobulin⁴⁻⁵ and the cDNA encoding human IL6 was cloned in 1986.⁶ IL6 was then proved to be a pleiotropic cytokine with a wide range of biological activities (fig 1) and produced by various types of lymphoid and non-lymphoid cells, such as T cells, B cells, monocytes, fibroblasts, keratinocytes, endothelial cells, mesangial cells, and several tumour cells.³ In addition to BCDF activity, IL6 induces T cell growth and cytotoxic T cell differentiation⁷⁻¹² through augmentation of IL2 receptor expression⁷ and IL2 production.¹³ IL6 acts synergistically with IL3 on haematopoiesis to support the formation of multi-lineage blast cell colonies,¹⁴⁻¹⁸ suggesting that it prompts haematopoietic stem cells in the G₀ phase to enter into the G₁ phase. Furthermore, IL6 is a potent inducer of terminal macrophage differentiation¹⁹ and osteoclast differentiation,²⁰ and also induces platelet production by functioning as a megakaryocytic differentiation factor.²¹⁻²³ In the acute phase reaction, IL6 stimulates hepatocytes to produce acute phase proteins such as C reactive protein (CRP), fibrinogen, α_1 antitrypsin, and serum amyloid A (SAA)²⁴⁻²⁵ while it simultaneously suppresses the albumin production.²⁶ Leucocytosis and fever have been found to be the result of in vivo administration of IL6.²⁷ As a cell growth factor, IL6 can induce the proliferation of mesangial cells,²⁸ epidermal keratinocytes,²⁹⁻³⁰ and various tumour cells such as plasmacytoma cells,³¹ multiple myeloma cells,³² and renal carcinoma cells.³³

ABNORMAL FINDINGS OBSERVED IN IL6 TRANSGENIC MICE

From a study using IL6 transgenic mice, we can learn what kinds of abnormalities IL6 hyperproduction causes in vivo. Transgenic mice were produced by introduction of the human IL6 gene under the transcription control of the immunoglobulin μ heavy chain

Department of
Medical Science I,
School of Health and
Sport Sciences, Osaka
University, 2-1
Yamada-oka, Suita
City, Osaka 565-0871,
Japan
N Nishimoto
K Yoshizaki

Osaka University,
Osaka
T Kishimoto

Correspondence to:
Dr Nishimoto (norihiro@
imed3.med.osaka-u.ac.jp)

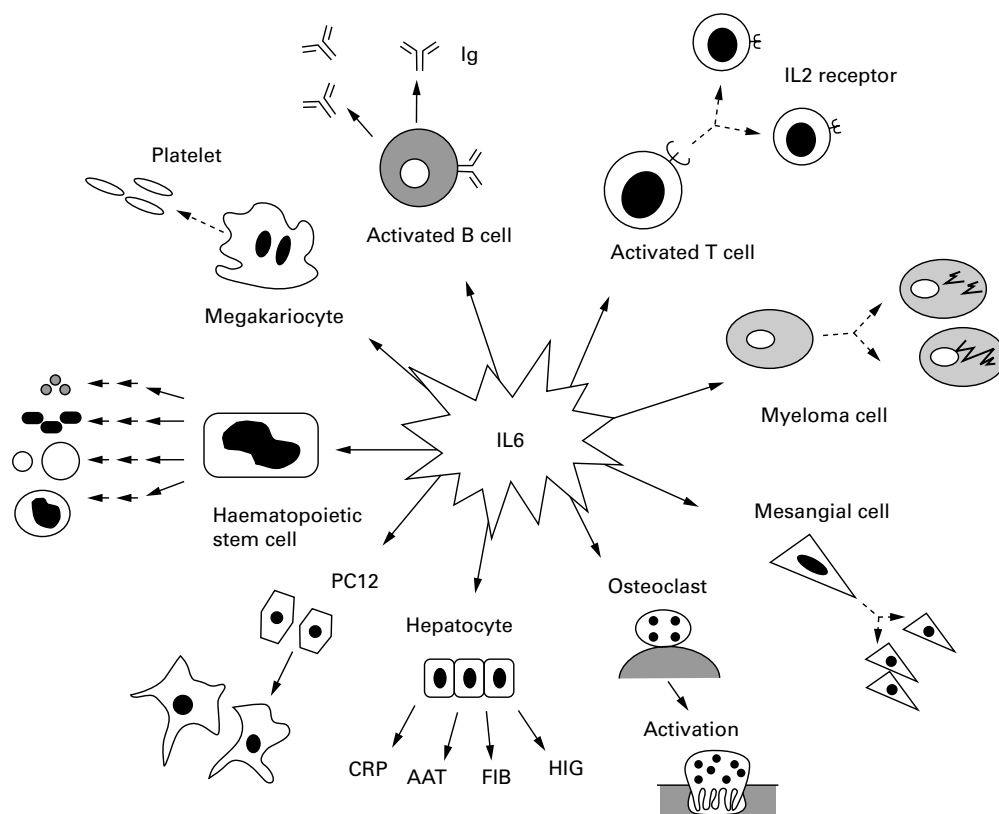


Figure 1 Schematic model of IL6 functions. IL6 is a pleiotropic cytokine with a wide range of biological activities.

enhancer (E μ) into C57BL/6 mice.³⁴ Polyclonal hyper- γ -globulinaemia with massive plasmacytosis in the spleen and lymph nodes was then observed in E μ -IL6 transgenic mice (fig 2, table 1). They showed increased levels of serum fibrinogen and reduced levels of serum albumin as well as an increased number of megakaryocytes in the bone marrow. IL6 transgenic mice also showed mesangial cell proliferation in the glomerulus (fig 3A), and lymphocyte proliferation with plasma cell infiltration in the interlobular septa and adjacent alveolar septa in the lung (fig 3C), and died

within four or five months. These data indicate that IL6 can function *in vivo* in the same way as it does *in vitro*. Furthermore, these abnormal findings may represent some of the features observed in human immune-inflammatory disease such as Castleman's disease and rheumatoid arthritis (RA), and the patients with active disease are always associated with overproduction of IL6 *in vivo*.³⁵⁻³⁹

ANTI-IL6R ANTIBODY TREATMENT IN ANIMAL MODELS

The IL6R complex comprises two functional different membrane proteins: an 80 kDa ligand binding chain (IL6R, IL6R α -chain, CD126) and a 130 kDa non-ligand binding but signal transducing chain (gp130, IL6R β -chain, CD130). IL6R has a very short intracytoplasmic portion containing only 82 amino acids that is not essential for signal transduction. IL6, when bound to either a membrane anchored or soluble form of IL6R (sIL6R), induces the homodimerisation of gp130, resulting in a high affinity functional receptor.⁴⁰ Therefore, several approaches can be proposed to block IL6 signal transduction: (1) inhibition of IL6 production or neutralisation of IL6; (2) blockade of IL6 binding to IL6R; (3) blockade of IL6/IL6R complex binding to gp130; (4)

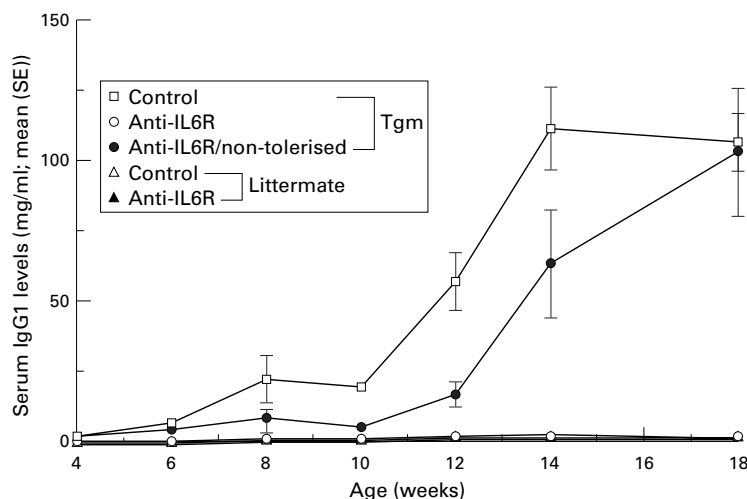


Figure 2 Anti-IL6R antibody treatment suppressed the increase in serum IgG1 levels in IL6 transgenic mice. C57BL/6 γ human IL6 transgenic mice (tgm) were first intravenously treated with 2 mg/body of rat antimouse IL6R antibody (MR16-1) at 4 weeks of age to induce tolerance to the mice against rat IgG, then subcutaneously treated with 100 μ g/body twice weekly from 5 to 17 weeks of age. Serum IgG1 levels were analysed by ELISA.

Table 1 Abnormal findings in IL6 transgenic mice (C57BL/6 γ)

Plasmacytosis (no evidence of monoclonality)
Splenomegaly
Lymphadenopathy
Megakaryocytosis in the bone marrow
Mesangial proliferative glomerulonephritis (MPGN)

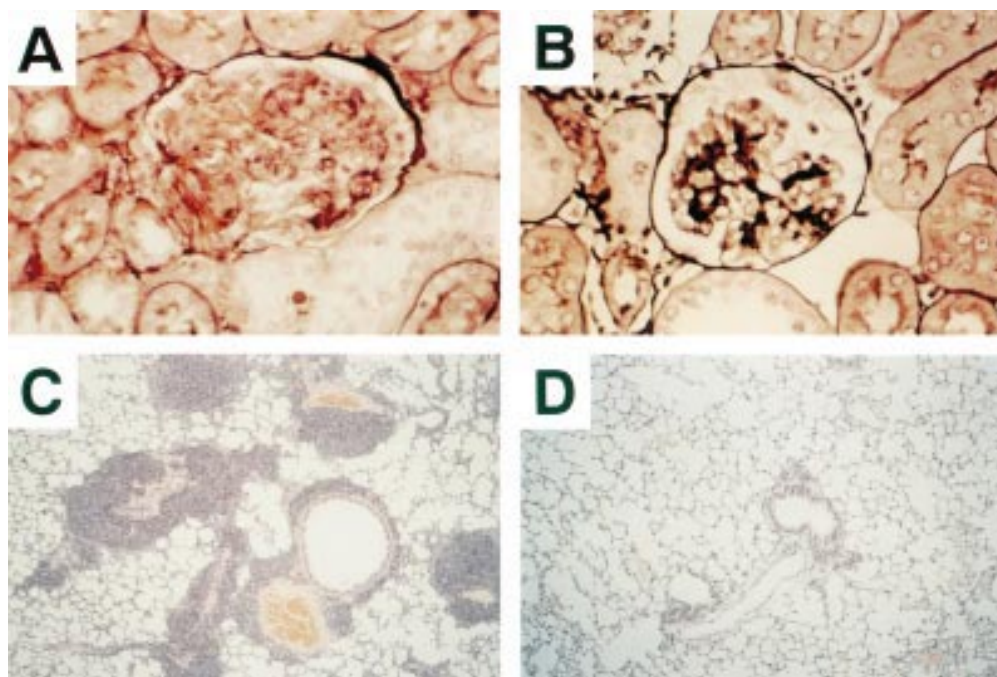


Figure 3 Anti-IL6R antibody treatment inhibited the development of mesangial proliferative glomerulonephritis and lymphocytic interstitial pneumonia in IL6 transgenic mice. C57BL/6J human IL6 transgenic mice (*tgm*) were treated with rat antimouse IL6R antibody (MR16-1) similarly to that of figure 2. Left kidneys and lungs were removed and fixed with 20% neutral buffered formalin for histological examination.

blockade of the intracytoplasmic signal through gp130. We have used anti-IL6R antibody to block IL6 signal transduction as a therapeutic strategy. This concept was tested in animal models: IL6 transgenic mice and collagen induced arthritis (CIA) mice.

As we described above, E μ -IL6 transgenic mice developed hyper- γ -globulinaemia with massive plasma cell infiltration in the spleen and lymph nodes. Treatment with rat antimouse IL6R antibody, MR16-1, completely inhibited the increase in serum γ -globulin levels (fig 2) as well as plasmacytosis. The mice also suffered from mesangial proliferative glomerulonephritis and they started to show proteinuria and haematuria at the age of 8–10 weeks. MR16-1 treatment prevented the occurrence of proteinuria and haematuria in the mice. It was confirmed by the histological findings that mice treated by MR16-1 showed normal glomerulus (fig 3B) while untreated mice showed mesangial cell proliferation with occlusion of the glomerular capillaries (fig 3A). The IL6 transgenic mice also showed lymphocyte infiltration in the many organs and developed the histological feature characteristic to lymphocytic interstitial pneumonia (LIP) in the lung (fig 3C). However, MR16-1 treatment completely prevented the pathological change of lung (fig 3D). Similarly, all the other abnormalities such as increase in serum fibrinogen, SAA and platelet counts as well as decrease in serum albumin observed in the IL6 transgenic mice were ameliorated by the administration of MR16-1.

CIA in DBA/1J mice is an experimental arthritis model widely used for the evaluation of therapeutic agents for human RA. As inactivation of the IL6 gene completely protected DBA/1J mice from CIA⁴¹ or it delayed the onset

of CIA and also reduced the severity,⁴² IL6 seems to be required for the development of CIA. Antimouse IL6R antibody treatment also suppressed the development of arthritis and protected knee joints from destructive change in DBA/1J mice immunised with bovine type II collagen.⁴³ Amounts of 0.5 mg, 2 mg, or 8 mg of rat antimouse IL6R antibody, MR16-1, were administered into DBA/1J mice once on the day of the first collagen immunisation. This MR16-1 treatment prevented the development of CIA in a dose dependent manner assessed by a visual scoring system for arthritis in four limbs. Although MR16-1 treatment on the day 3 after the immunisation similarly suppressed the development of arthritis, anti-arthritis effects were not observed when the same dose of MR16-1 was administered on the day 7 or later.⁴³ Taken together with the findings that treatment of CIA with anti-TNF α and anti-IL1 antibodies has been shown to be effective on established murine CIA,^{44,45} IL6 may act earlier in the course of CIA than that of TNF α and IL1.

As a monoclonal antibody recognises a specific antigen epitope, a monoclonal antibody to human antigen epitope does not always cross react with that of other species. The safety and in vivo effect of humanised antihuman IL6R antibody, MRA, on the development of CIA were thus examined in cynomolgus monkeys (*Macaca fascicularis*) because MRA cross reacts with their IL6R⁴⁶ but not with that of murine. Joint swelling and stiffness as well as limb oedema appeared at four weeks after the first immunisation with bovine type II collagen with complete adjuvant and increased both in the number and in the degree up to six to eight weeks. Although the inflammation of joints spontaneously decreased, destructive changes

remained in the joints. Intravenous administration of MRA (10 mg/kg, once a week) significantly inhibited the onset of joint inflammation as well as the increase of serum CRP, fibrinogen levels and erythrocyte sedimentation rate (ESR) in the monkeys immunised with type II collagen. Histological examination at 14 weeks revealed that pathological changes did not occur in the MRA treated group while synovial proliferation, pannus formation, infiltration of neutrophils, angiogenesis, and cartilage and bone destruction were observed in the joints of the control group monkeys, most of which looked closely like the pathological changes of human RA joints. These findings clearly demonstrate that MRA prevented the development of CIA in cynomolgus monkey. Furthermore, administration of MRA did not affect blood cell, liver, kidney or heart in the cynomolgus monkey.

These data suggest that MRA can be a therapeutic agent for the treatment of human RA.

PATHOLOGICAL SIGNIFICANCE OF IL6 IN CASTLEMAN'S DISEASE

Castleman's disease,⁴⁷ an atypical lymphoproliferative disorder, can be classified into two types: hyaline-vascular and plasma-cell type according to the histological features of the affected lymph nodes.⁴⁸⁻⁴⁹ The latter type is frequently associated with systemic manifestations characterised by chronic inflammatory symptoms such as fever, general fatigue, anaemia, an increased ESR, increased levels of CRP and fibrinogen³⁵⁻⁴⁸⁻⁵⁰ and immunological abnormalities such as polyclonal hyper- γ -globulinaemia, and the presence of autoantibodies. Patients with Castleman's disease frequently show lymphocytic interstitial pneumonia⁵¹ and mesangial proliferative glomerulonephritis (MPGN), and sometimes develop autoimmune haemolytic anaemia as complications. Some of these findings resemble those seen in the IL6 transgenic mice. In cases of localised Castleman's disease, these clinical abnormalities may resolve after excision of the affected lymph nodes.³⁵⁻⁴⁸⁻⁵⁰ On the other hand, the multicentric form of Castleman's disease is often refractory to treatment even with corticosteroids or chemotherapy, and consequently the prognosis of such patients is poor. Therefore, a new therapeutic strategy has been required. Recently, Kaposi's sarcoma associated herpesvirus (also called human herpesvirus type 8, KSHV/HHV-8) was reported to be an aetiological agent of this disease, especially in human immunodeficiency virus (HIV) infected patients.⁵²⁻⁵⁴

We previously demonstrated constitutive overproduction of IL6 from the germinal centres of hyperplastic lymph nodes and a correlation between serum IL6 levels and clinical abnormalities of patients with plasma-cell type Castleman's disease. And then we suggested that dysregulated IL6 production from affected lymph nodes might be responsible for the systemic manifestations of this disease.³⁵

Beck *et al*⁵⁵ showed that the *in vivo* administration of murine anti-IL6 neutralising anti-

body to a patient with Castleman's disease seemed to be therapeutically effective, thus confirming the *in vivo* function of IL6 in this disease. However, such a therapeutic effect might be transient, either because of the emergence of neutralising human antibodies against murine anti-IL6 antibody or because of the inability to attain serum concentrations of anti-IL6 monoclonal antibody sufficient to neutralise increasing IL6 levels.⁵⁶ Therefore, the therapeutic value of murine anti-IL6 antibody for human patients remained limited and then humanised anti-IL6R antibody treatment can constitute a new therapeutic strategy for patients with multicentric Castleman's disease.

PATHOLOGICAL SIGNIFICANCE OF IL6 IN RA

RA is a typical immune-inflammatory disease characterised by persistent synovitis with synovial cell proliferation and destructive changes in bone and cartilage of multiple joints. Emergence of rheumatoid factors and increase in platelet counts, γ -globulin, CRP, ESR, and serum amyloid A protein levels and decrease in serum albumin may be explained by uncontrolled IL6 overproduction.⁵⁷ As IL6 in the presence of soluble IL6R activates osteoclasts to induce bone absorption *in vitro*,²⁰ and also as anti-IL6 antibody treatment prevented the osteoporosis *in vivo* in ovariectomised rats,⁵⁸ IL6 may be involved in the osteoporosis and bone and cartilage destruction of RA. As IL6 can upregulate the expression of intercellular adhesion molecule (ICAM)-1,⁵⁹ it may recruit immunocompetent cells into the inflammatory tissues. Large amounts of IL6 were indeed observed both in the sera and synovial fluids from the affected joints of RA patients.³⁶⁻³⁹ Taken together, these findings indicate that it is probable that IL6 plays important parts in the pathogenesis of RA. Wendling *et al* reported that the administration of mouse monoclonal anti-IL6 antibody to the patients with RA resulted in improvement of symptoms and laboratory findings of RA although the effects were transient.⁶⁰ The fact confirmed that IL6 plays an important part in this disease.

Treatment of Castleman's diseases and RA with humanised anti-IL6R antibody, MRA

HUMANISED ANTI-IL6R ANTIBODY

To be effective as therapeutic agents administered to patients in repeated doses, mouse antibodies must therefore be engineered to look like human antibodies. Reshaped human PM-1 (rhPM-1) is constructed by grafting the complementarity determining regions (CDR) from mouse PM-1, a specific monoclonal antibody against human IL6R, into human IgG to recreate a properly functioning antigen binding site in a reshaped human antibody.⁶¹ rhPM-1 is equivalent to both mouse and chimeric PM-1 in terms of antigen binding and growth inhibition of myeloma cells *in vitro*.⁶¹⁻⁶² It looks very much like a human antibody and can therefore be expected to have less immunogenicity in *in vivo* in human. rhPM-1 is now named MRA.

We have attempted to inhibit IL6 signal transduction by using this humanised antibody against the human IL6R.

TREATMENT OF CASTLEMAN'S DISEASE

We used humanised anti-IL6 receptor antibody, MRA, to treat seven patients with multicentric plasma-cell type or mixed type Castleman's disease.⁶³ All patients had active disease at the start of MRA treatment, and four of them had previously been treated with prednisolone or immune suppressive agents for more than three months. Three patients had amyloidosis secondary to Castleman's disease, and five had lymphocytic interstitial pneumonia. After obtaining their informed consent and an approval of the Ethical Committee of Osaka University, 50–100 mg of MRA was administered either once or twice weekly. The trough level of serum MRA was 10 µg/ml during maintenance treatment using 50 mg MRA twice a week, and decreased to 5 µg/ml using treatment at 100 mg MRA once a week. There were no differences in responses in terms of constitutional symptoms observed between the two regimens. Ten µg/ml of MRA had previously been proved to inhibit the IL6 induced proliferation of myeloma/plasmacytoma cells *in vitro*.⁶² Treatment was well tolerated except for a transient and mild decrease in granulocyte counts on the day after MRA administration in two patients that spontaneously recovered within two days. No decrease in T cell function was observed, assessed either by a skin test with purified protein derivative of tuberculin or by a mixed lymphocyte culture (MLC) test with allogeneic T cells. Representative data of the MRA treatment for Castleman's disease are shown in figure 4. Immediately after the MRA administration, fever and fatigue disappeared, and anaemia as well as serum levels of CRP,

fibrinogen, SAA and albumin started to improve. After three months of treatment, hyper-γ-globulinaemia and lymphadenopathy were also remarkably alleviated, as were renal function abnormalities in patients with amyloidosis. Autoantibodies such as antinuclear antibody and anti-DNA antibody disappeared after MRA treatment. Histopathological examination of lymph nodes revealed reduction in follicular hyperplasia and vascularity after MRA treatment. The findings imply an important pathogenic mechanism of IL6 in the follicular hyperplasia of affected lymph nodes as well as infiltration of hyaline capillaries with endothelial cell proliferation. These data showed humanised anti-IL6R monoclonal antibody, MRA, can achieve marked responses in the refractory form of this disease without significant adverse reactions or development of neutralising antibodies. It also confirmed the pathophysiological significance of IL6 in Castleman's disease, and blockade of the IL6 signal by MRA may have potential as a new treatment based on the pathophysiological mechanism of multicentric form Castleman's disease.

TREATMENT OF RA

Before the clinical trial of humanised anti-IL6R antibody, MRA, we compassionately treated 11 patients with refractory RA by MRA after obtaining the permission of ethical committee of our institute.⁵⁷ Before MRA treatment, they all had active disease resistant to any conventional treatment using various disease modifying antirheumatic drugs (DMARDs) including methotrexate, and corticosteroids. The patients were treated with MRA in the same regimen as that for Castleman's disease. The treatment was well tolerated and no major side effect was observed except an appearance of anti-idiotypic anti-

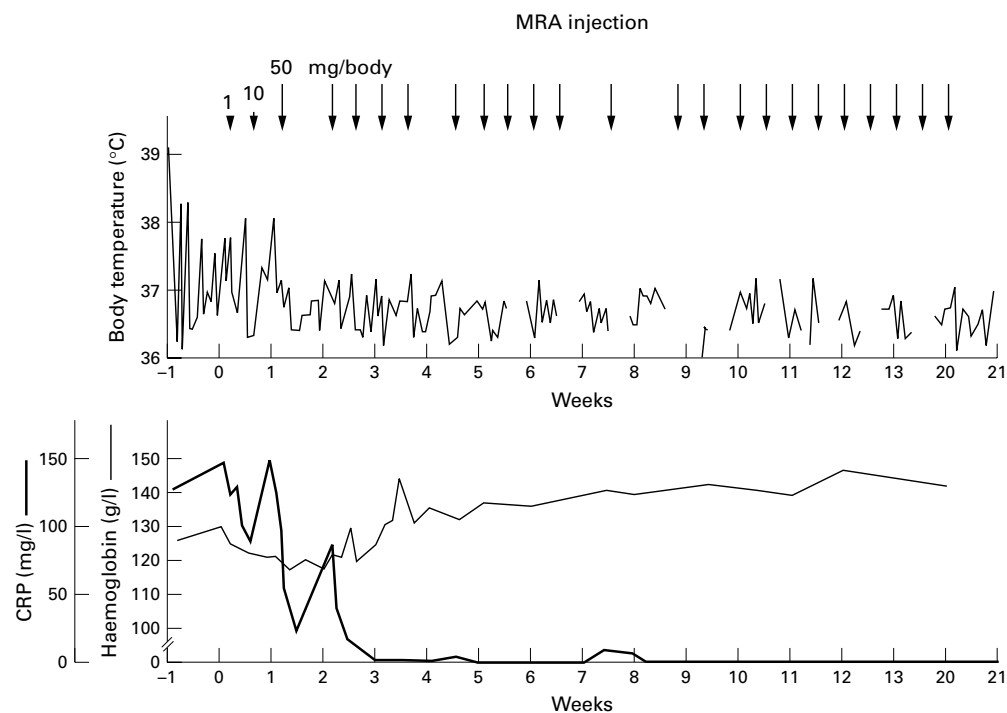


Figure 4 Improvement in Castleman's disease by humanised anti-IL6R antibody treatment.

body in one case, who was therefore withdrawn. Two additional patients were withdrawn: one was because of occurrence of angina attack the relation of which to MRA administration could not be classified, and the other was because of her private reasons. A transit decrease in neutrophil counts mostly within normal range was observed in most of the cases on the next day after MRA administration similarly to Castleman's disease patients. In the eight patients who received the MRA treatment for more than eight weeks, both clinical and biological improvement appeared during the treatment. Representative data of a patient treated with MRA are shown in figure 5. At eight weeks, clinical response was 88% assessed by ACR20 criteria, and 50% by ACR50. Similar response was obtained in the four patients who received MRA treatment for 24 weeks (unpublished data). These results indicate that MRA is relatively safe and useful for the treatment of RA. On the basis of our data, phase I/II clinical trial of MRA in Japan and phase I trial in the United Kingdom are now in progress.

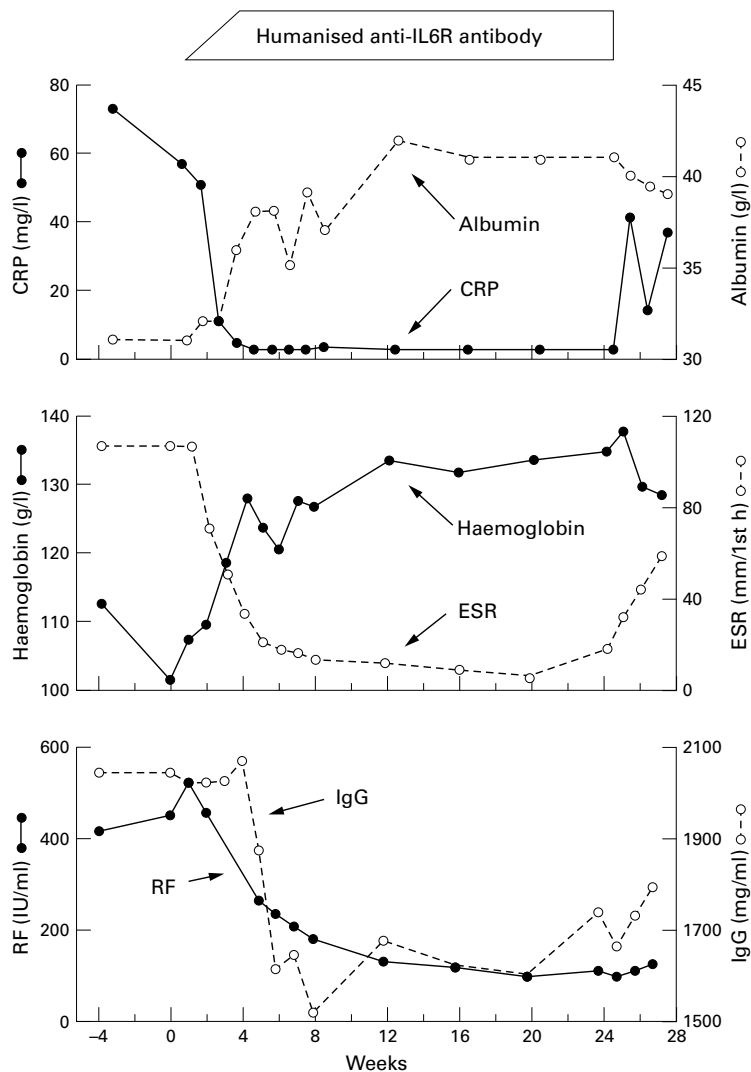


Figure 5 Improvement in RA by humanised anti-IL6R antibody treatment.

Conclusion

Recent progress in the study of immune-inflammatory diseases revealed the pathological significance of some proinflammatory cytokines in the diseases. In addition, the advances in molecular technology made it possible to constitute a new strategy to use humanised monoclonal antibody to modulate the cytokine signals. There are anti-cytokine treatments such as recombinant soluble TNF receptor-Fc fusion protein (Etanercept)⁶⁴ for RA and chimeric anti-TNF α monoclonal antibody (Infliximab) for RA⁶⁵⁻⁶⁶ and Crohn's disease⁶⁷ already approved in the USA. IL1 receptor antagonist, which blocks IL1 function, and other cytokine inhibitors or even anti-inflammatory cytokine such as IL10 are now under evaluation for their safety and efficacy. Interference of IL6 signal transduction with a humanised anti-IL6 receptor antibody is one of these therapeutic approaches. Each of these agents is to be evaluated specifically for their long term safety and efficacy for these chronic diseases. As many proinflammatory cytokines and immunoregulatory cytokines seem to play an integral part in the pathogenesis of immune-inflammatory disease, combination treatment consisting of some agents may be more effective than that of a single agent. Studies are necessary to understand the intracellular events, such as signal transduction and gene regulation, in the cytokine network which physiologically regulates the over-function of each cytokine in vivo.

- Dickman S. Antibodies stage a comeback in cancer treatment. *Science* 1998;280:1196-3.
- Kishimoto T. The biology of interleukin-6. *Blood* 1989;74:1-10.
- Akira S, Tani T, Kishimoto T. Interleukin-6 in biology and medicine. *Adv Immunol* 1993;54:1-78.
- Muraguchi A, Kishimoto T, Miki T, Kuritani T, Kaieda T, Yoshizaki K, et al. T cell-replacing factor (TRF)-induced IgG secretion in human B blastoid cell line and demonstration of acceptors for TRF. *J Immunol* 1981;127:412-16.
- Yoshizaki K, Nakagawa T, Kaieda T, Muraguchi A, Yamamura Y, Kishimoto T. Induction of proliferation and IgG-production in human B leukemic cells by anti-immunoglobulins and T cell factors. *J Immunol* 1982;128:1296-301.
- Hirano T, Yasukawa K, Harada H, Tani T, Watanabe Y, Matsuda T, et al. Complementary DNA for a novel human interleukin (BSF-2) that induces B cell lymphocytes to produce immunoglobulin. *Nature* 1986;324:73-6.
- Noma T, Mizuta T, Rosen A, Hirano T, Kishimoto T, Honjo T. Enhancement of the interleukin-2 receptor expression on T cells by multiple B-lymphotropic lymphokines. *Immunol Lett* 1987;15:249-53.
- Okada M, Kitahara M, Kishimoto S, Matsuda T, Hirano T, Kishimoto T. BSF-2/IL-6 functions as killer helper factor in the in vitro induction of cytotoxic T cells. *J Immunol* 1988;141:1543-9.
- Ceuppens JL, Baroja ML, Lorre K, Van Damme J, Billiau A. Human T cell activation with phytohemmagglutinin: the function of IL-6 as an accessory signal. *J Immunol* 1988;141:3868-74.
- Le J, Fredrickson G, Reis L, Diamantstein T, Hirano T, Kishimoto T, et al. Interleukin-2-dependent and interleukin-2-independent pathways of regulation of thymocyte function by interleukin-6. *Proc Natl Acad Sci USA* 1988;85:8643-7.
- Lotz M, Jirik F, Kabouridis R, Tsoukas C, Hirano T, Kishimoto T, et al. BSF-2/IL-6 is costimulant for human thymocytes and T lymphocytes. *J Exp Med* 1988;167:1253-8.
- Takai Y, Wong GG, Clark SC, Burakoff SJ, Herrmann SH. B cell stimulatory factor-2 is involved in the differentiation of cytotoxic T lymphocytes. *J Immunol* 1988;140:508-12.
- Garman RD, Jacobs KA, Clark SC, Raulat DH. B cell-stimulatory factor 2 (β 2 interferon) functions as a second signal for interleukin 2 production by mature murine T cells. *Proc Natl Acad Sci USA* 1987;84:7629-33.
- Ikebuchi K, Wong GG, Clark SC, Ihle JN, Hirai Y, Ogawa M. Interleukin-6 enhancement of interleukin-3-dependent proliferation of multipotential hemopoietic progenitors. *Proc Natl Acad Sci USA* 1987;84:9035-9.
- Koike K, Nakahata T, Takagi M, Kobayashi T, Ishiguro A, Tsujii K, et al. Synergism of BSF2/interleukin-6 and

- interleukin-3 on development of multipotential hemopoietic progenitors in serum free culture. *J Exp Med* 1988;168:879-90.
- 16 Leary A, Ikebuchi K, Hirai Y, Wong G, Yang Y-C, Clark S, *et al.* Synergism between interleukin-6 and interleukin-3 in supporting proliferation of human hematopoietic stem cells: comparison with interleukin-1 α . *Blood* 1988;71:1759-63.
 - 17 Ogawa M. Differentiation and proliferation of hematopoietic stem cells. *Blood* 1993;81:2844-53.
 - 18 Stanley ER, Bartocci A, Patinkin D, Rosendaal M, Bradley TR. Regulation of very primitive, multipotent, hemopoietic cells by hemopoietin-1. *Cell* 1986;45:667-74.
 - 19 Nicola NA, Metcalf D, Matsumoto M, Johnson GR. Purification of a factor inducing differentiation in murine myelomonocytic leukemia cells. Identification as granulocyte colony-stimulating factor. *J Biol Chem* 1983;258:9017-23.
 - 20 Tamura T, Udagawa N, Takahashi N, Miyaura C, Tanaka S, Yamada Y, *et al.* Soluble interleukin-6 receptor triggers osteoclast formation by interleukin 6. *Proc Natl Acad Sci USA* 1993;90:11924-8.
 - 21 Ishibashi T, Kimura H, Shikawa H, Uchida T, Kariyone S, Hirano T, *et al.* Human interleukin-6 is a direct promoter of maturation of megakaryocytes in vitro. *Proc Natl Acad Sci USA* 1987;86:5953-7.
 - 22 Ishibashi T, Kimura H, Shikawa Y, Uchida T, Kariyone S, Hirano T, *et al.* Interleukin-6 is a potent thrombopoietic factor in vivo in mice. *Blood* 1989;74:1241-4.
 - 23 Koike K, Nakahata T, Kubo T, Kikuchi T, Takagi M, Ishiguro A, *et al.* Interleukin-6 enhances murine megakaryocytopoiesis in serum-free culture. *Blood* 1990;75:2286-91.
 - 24 Gauldie J, Richards C, Harnish D, Landsdorp P, Baumann H. Interferon β /B cell-stimulatory factor type 2 shares identity with monocyte-derived hepatocyte stimulating factor and regulates the major acute phase protein response in liver cells. *Proc Natl Acad Sci USA* 1987;84:7251-5.
 - 25 Castell JV, Gomez-Lechon MJ, David M, Hirano T, Kishimoto T, Heinrich PC. Recombinant human interleukin-6 (IL-6/BSF-2/HFS) regulates the synthesis of acute phase proteins in human hepatocytes. *FEBS Lett* 1988;232:347-50.
 - 26 Andus T, Geiger T, Hirano T, Northoff H, Ganter U, Bauer J, *et al.* Recombinant human B cell stimulatory factor 2 (BSF-2/INF β 2) regulates b-fibrinogen and albumin mRNA levels in Fao-9 cell. *FEBS Lett* 1987;221:18-22.
 - 27 Ulich TR, del Castillo J, Guo KZ. In vivo hematologic effects of recombinant interleukin-6 on hematopoiesis and circulating numbers of RBCs and WBCs. *Blood* 1989;73:108-10.
 - 28 Horii Y, Muraguchi A, Iwano M, Matsuda T, Hirayama T, Yamada H, *et al.* Involvement of interleukin-6 in mesangial proliferation of glomerulonephritis. *J Immunol* 1989;143:3949-55.
 - 29 Grossman RM, Krueger J, Yourish D, Granelli-Piperno A, Murphy DP, May LT, *et al.* Interleukin 6 is expressed in high levels in psoriasis skin and stimulates proliferation of cultured human keratinocytes. *Proc Natl Acad Sci USA* 1989;86:6367-71.
 - 30 Yoshizaki K, Nishimoto N, Matsumoto K, Tagoh H, Taga T, Deguchi Y, *et al.* Interleukin-6 and its receptor expression on the epidermal keratinocytes. *Cytokine* 1990;2:281-387.
 - 31 Nordan RP, Pumphrey JG, Rudikoff S. Purification and NH2-terminal sequence of a plasmacytoma growth factor derived from the murine macrophage cell line P388D1. *J Immunol* 1987;139:813-17.
 - 32 Kawano M, Hirano T, Matsuda T, Taga T, Horii Y, Iwano K, *et al.* Autocrine generation and requirement of BSF-2/IL-6 for human multiple myelomas. *Nature* 1988;332:83-5.
 - 33 Miki S, Iwano M, Miki Y, Yamamoto M, Tang B, Yokokawa K, *et al.* Interleukin-6 (IL-6) functions as an in vitro autocrine growth factor in renal cell carcinomas. *FEBS Lett* 1989;250:607-10.
 - 34 Suematsu S, Matsuda T, Aozasa K, Akira S, Nakano N, Ohno S, *et al.* IgG1 plasmacytosis in interleukin-6 transgenic mice. *Proc Natl Acad Sci USA* 1989;86:7547-51.
 - 35 Yoshizaki K, Matsuda T, Nishimoto N, Kuritani T, Lee T, Aozasa K, *et al.* Pathogenic significance of interleukin-6 (IL-6/BSF-2) in Castleman's disease. *Blood* 1989;74:1360-7.
 - 36 Hirano T, Matsuda T, Turner M, Miyasaka N, Buchan G, Tang B, *et al.* Excessive production of interleukin 6/B cell stimulatory factor-2 in rheumatoid arthritis. *Eur J Immunol* 1988;18:1797-801.
 - 37 Houssiau FA, Devogelaer JP, Van Damme J, De Deuchchaisies CN, Van Snick J. Interleukin-6 in synovial fluid and serum of patients with rheumatoid arthritis and other inflammatory arthritis. *Arthritis Rheum* 1988;31:784-8.
 - 38 Sack U, Kinne R, Marx T, Heppert P, Bender S, Emmrich F. Interleukin-6 in synovial fluid is closely associated with chronic synovitis in rheumatoid arthritis. *Rheumatol Int* 1993;13:45-51.
 - 39 Madhok R, Crilly A, Watson J, Capell HA. Serum interleukin 6 levels in rheumatoid arthritis: correlation with clinical and laboratory indices of disease activity. *Ann Rheum Dis* 1993;52:232-4.
 - 40 Murakami M, Hibi M, Nakagawa N, Nakagawa T, Yasukawa K, Yamanishi K, *et al.* IL-6-induced homodimerization of gp130 and associated activation of a tyrosine kinase. *Science* 1993;260:1808-10.
 - 41 Alonzi T, Fattori E, Lazzaro D, Costa P, Probert L, Kollias G, *et al.* Interleukin-6 is required for the development of collagen-induced arthritis. *J Exp Med* 1998;187:461-8.
 - 42 Sasai M, Saeki Y, Ohshima S, Nishioka K, Mima T, Tanaka T, *et al.* Delayed onset and reduced severity of collagen-induced arthritis in interleukin-6-deficient mice. *Arthritis Rheum* 1999;42:1635-43.
 - 43 Takagi N, Mihara M, Moriya Y, Nishimoto N, Yoshizaki K, Kishimoto T, *et al.* Blockage of Interleukin-6 receptor ameliorates joint disease in murine collagen-induced arthritis. *Arthritis Rheum* 1998;41:2117-21.
 - 44 Van Den Berg WB, Joosten LAB, Helsen M, Van De Loo FAJ. Amelioration of established murine collagen-induced arthritis with anti-IL-1 treatment. *Clin Exp Immunol* 1994;95:237-43.
 - 45 Williams RO, Feldman M, Maini RN. Anti-tumor necrosis factor ameliorates joint disease in murine collagen-induced arthritis. *Proc Natl Acad Sci USA* 1992;89:9784-8.
 - 46 Mihara M, Kotoh M, Oda Y, Kumagai E, Takagi N, Tsunemi K, *et al.* Anti-IL-6 receptor antibody suppress the onset of collagen arthritis in monkeys. *Arthritis Rheum* 1997;40:S133.
 - 47 Castleman B, Iverson L, Menendez VP. Localized mediastinal lymph-node hyperplasia resembling thymoma. *Cancer* 1956;9:822-30.
 - 48 Flendrig JA, Schillings PHM. Benign giant lymphoma. The clinical signs and symptoms. *Folia Med Neerl* 1969;12:119.
 - 49 Keller AR, Hochholzer L, Castleman B. Hyaline-vascular and plasma-cell types of giant lymph node hyperplasia of the mediastinum and other locations. *Cancer* 1972;29:670-83.
 - 50 Frizzera G, Peterson BA, Bayrd ED, Goldman A. A systemic lymphoproliferative disorder with morphologic features of Castleman's disease: clinical findings and clinicopathologic correlations in 15 patients. *J Clin Oncol* 1985;3:1202-16.
 - 51 Johkoh T, Müller NL, Ichikado K, Nishimoto N, Yoshizaki K, Honda O, *et al.* Intathoracic multicentric Castleman's disease: CT finding in 12 patients. *Radiology* 1998;209:477-81.
 - 52 Soulier J, Grollet L, Oksenhendler E, Cacoub P, Cazals-Hatem D, Babinet P, *et al.* Kaposi's sarcoma-associated herpesvirus-like DNA sequences in multicentric Castleman's disease. *Blood* 1995;86:1276-80.
 - 53 Dupin N, Gorin I, Deleuze J, Agut H, Huraux JM, Escande JP, *et al.* Herpes-like DNA sequences, AIDS-related tumors, and Castleman's disease. *N Engl J Med* 1995;333:798-9.
 - 54 Gessain A, Sudaka A, Briere J, Fouchard N, Nicola MA, Rio B, *et al.* Kaposi sarcoma-associated herpes-like virus (human herpesvirus type 8) DNA sequences in multicentric Castleman's disease: Is there any relevant association in non-human immunodeficiency virus-infected patients? *Blood* 1996;87:414-16.
 - 55 Beck JT, Hsu SM, Wijdenes J, Bataille R, Klein B, Vesole D, *et al.* Alleviation of systemic manifestations of Castleman's disease by monoclonal anti-interleukin-6 antibody. *N Engl J Med* 1994;330:602-5.
 - 56 Klein B, Wijdenes J, Zhang XG, Jourdan M, Boiron JM, Brochier J, *et al.* Murine anti-interleukin-6 monoclonal antibody therapy for a patient with plasma cell leukemia. *Blood* 1991;78:1198-204.
 - 57 Yoshizaki K, Nishimoto N, Mihara M, Kishimoto T. Therapy of RA by blocking IL-6 signal transduction with humanized anti-IL-6 receptor antibody. *Springer Semin Immunopathol* 1998;20:247-59.
 - 58 Jilka RH, Hangoc G, Girasole G, Passeri G, Williams DC, Abrams JS, *et al.* Increased osteoclast development after estrogen loss: Mediation by interleukin-6. *Science* 1992;257:88-91.
 - 59 Yamamoto M, Yoshizaki K, Kishimoto T, Ito H. IL-6 is required for the development of Th1 cell-mediated murine colitis. *J Immunol* 2000;164:4878-82.
 - 60 Wendling D, Racadot E, Wijdenes J. Treatment of severe rheumatoid arthritis by anti-interleukin 6 monoclonal antibody. *J Rheumatol* 1993;20:259-62.
 - 61 Sato K, Tsuchiya M, Saldanha J, Koishihara Y, Ohsugi Y, Kishimoto T, *et al.* Reshaping a human antibody to inhibit the interleukin-6-dependent tumor cell growth. *Cancer Res* 1993;53:851-6.
 - 62 Nishimoto N, Ogata A, Shima Y, Tani Y, Ogawa H, Nakagawa M, *et al.* Oncostatin M, leukemia inhibitory factor, and interleukin 6 induce the proliferation of human plasmacytoma cells via the common signal transducer, gp130. *J Exp Med* 1994;179:1343-7.
 - 63 Nishimoto N, Sasai M, Shima Y, Nakagawa M, Matsumoto T, Shirai T, *et al.* Improvement in Castleman's disease by humanized anti-IL-6 receptor antibody therapy. *Blood* 2000;95:56-61.
 - 64 Moreland LW, Baumgartner SW, Schiff MH, Tindall EA, Fleischmann RM, Weaver AL, *et al.* Treatment of rheumatoid arthritis with a recombinant human tumor necrosis factor receptor (p75)-Fc fusion protein. *N Engl J Med* 1997;337:141-7.
 - 65 Elliott MJ, Maini RN, Feldmann M, Kalden J, Antoni C, Smolen J, *et al.* Randomised double-blind comparison of chimeric monoclonal antibody to tumour necrosis factor α (cA2) versus placebo in rheumatoid arthritis. *Lancet* 1994;344:1105-27.
 - 66 Elliott MJ, Maini RN, Feldmann M, Long-Fox A, Charles P, Bijl H, *et al.* Repeated therapy with monoclonal antibody to tumor necrosis factor α (cA2) in patients with rheumatoid arthritis. *Lancet* 1994;344:1125-7.
 - 67 Targan SR, Hanaver S, van Deurster S, Mayer L, Present D, Braakman T, *et al.* A short-term study of chimeric monoclonal antibody cA2 to tumor necrosis factor α for Crohn's disease. *N Engl J Med* 1997;337:1029-35.