

HIV AND CARDIOVASCULAR MEDICINE

B D Prendergast

793

Heart 2003;89:793–800

As the human immunodeficiency virus (HIV) pandemic enters its third decade, the resultant acquired immunodeficiency syndrome (AIDS) is a global health crisis with approximately 36 million people affected worldwide.^{1,2} The disease is now the principal cause of death in young adults in many parts of the USA and Europe, and morbidity and mortality have risen six-fold in sub-Saharan Africa where modern health care is unavailable to many. Furthermore, over one million children worldwide are living with HIV/AIDS and 1600 babies are born with HIV infection every day.

Early therapeutic goals focused on prolongation of life by aggressive treatment of often fatal opportunistic infections, such as *Pneumocystis carinii* pneumonia. Descriptions of specific HIV related myocarditis and cardiomyopathy appeared during the 1980s and overall mortality fell with improved prophylactic regimens against opportunistic infection and clinical surveillance programmes. In the mid 1990s the advent of combination highly active antiretroviral therapy (HAART) made a major impact on the morbidity and mortality of HIV patients. Combination therapy reduces viral replication, delays disease progression, and prolongs survival, while limiting development of viral resistance. Survival to 40–50 years is no longer unusual and coronary artery disease, either de novo or as an iatrogenic consequence of newer treatment regimens, is emerging as an important problem.

HIV infection is characterised by an acquired, irreversible, profound immunosuppression that predisposes patients to multiple opportunistic infections, malignancies, and progressive dysfunction of multiple organ systems. HIV specifically infects and gradually depletes CD4+ lymphocytes^{w1} but may also affect other cell types, including monocytes/macrophages, endothelial cells, glial cells, intestinal epithelial cells, and possibly neurons. Studies have suggested that HIV may exhibit a cardiac tropism,^{w2} but the heart may also be affected by other opportunistic viruses, fungi, and protozoa. Cardiac disease associated with HIV may therefore be multifactorial, and can be caused by infectious or neoplastic complications or their treatments, any of the established causes of cardiac disease in other patient populations, or by HIV infection of the myocardium itself. Knowledge of the relative frequency of each form of heart disease in patients with HIV is constantly evolving and encapsulated in a series of review articles published over the past decade.^{2–7 w3–8} This article presents a review of our knowledge to date.

CARDIAC INVOLVEMENT IN HIV PATIENTS

Cardiac involvement in AIDS was first reported in 1983 in a postmortem description of a 24 year old woman of Haitian origin with multiple complications of AIDS, including Kaposi's sarcoma involving the entire anterior cardiac wall without pericardial effusion.⁸ Subsequently, cardiac involvement in patients with HIV infection has been described in multiple necropsy, clinical, and echocardiographic series. Almost any agent that can cause disseminated infection in patients with AIDS may involve the myocardium, but clinical evidence of cardiac disease is usually overshadowed by manifestations in other organs, primarily the brain and lungs. Thus, the number of patients with AIDS and cardiac involvement at necropsy greatly exceeds the number with significant cardiac disease during life. Estimates of prevalence vary widely from 28–73%¹ according to the screening methods selected. Although exact data are unavailable, conservative estimates derived from European and US series indicate cardiac morbidity and mortality in HIV patients of 6–10% and 1–9%, respectively.^{3,4} Important clinical syndromes involving the heart that have been described in patients with HIV infection are summarised in table 1.

MYOCARDIAL DISEASE

The first case of rapidly fatal, dilated cardiomyopathy in a patient with AIDS was described in 1986.^{w9} Among patients with dilated cardiomyopathy, HIV is the underlying cause in 4%⁶; prognosis is poor and patients with HIV related cardiomyopathy have a mortality hazard ratio of 4.0 in comparison with controls with idiopathic dilated cardiomyopathy.^{w10} Dilated cardiomyopathy affects 10–20% of those with HIV infection and accounts for approximately a third of HIV related

Correspondence to:
Dr BD Prendergast, North-West
Regional Cardiothoracic
Centre, Wythenshawe
Hospital, Southmoor Road,
Manchester M23 9LT, UK;
Bernard.Prendergast@
smuht.nwest.nhs.uk

Table 1 Cardiac conditions associated with HIV infection

Myocardial disease	
Opportunistic infections	
Bacterial	<i>Mycobacterium tuberculosis</i> , <i>Mycobacterium avium-intracellulare</i>
Fungal	<i>Cryptococcus neoformans</i> , <i>Aspergillus fumigatus</i> , <i>Candida albicans</i> , <i>Histoplasma capsulatum</i> , <i>Coccidioides immitis</i>
Protozoan	<i>Toxoplasma gondii</i> , <i>Pneumocystis carinii</i>
Viral	Cytomegalovirus, herpes simplex, coxsackie B virus
Direct HIV infection	
Lymphocytic myocarditis	
Non-inflammatory myocardial necrosis	
	Microvascular spasm
	Catecholamine excess
Nutritional deficiency (selenium, thiamine)	
Hypoxic injury	
Drug toxicity	
	Anti-HIV drugs
	Drugs used for opportunistic infections
Arteriopathy	
Cardiomegaly and cardiomyopathy	
	Congestive cardiomyopathy
	Right ventricular hypertrophy/dilatation with pulmonary hypertension:
	pulmonary infection
	pulmonary emboli
	HIV plexogenic pulmonary arteriopathy
Neoplasia	
	Kaposi's sarcoma
	Lymphoma
Endocardial disease	
Marantic endocarditis (non-bacterial thrombotic endocarditis)	
Healed infective endocarditis	
Infective endocarditis	
	Bacterial
	Fungal
Pericardial disease	
Infectious	
Bacterial	Tuberculosis (<i>M tuberculosis</i> , <i>M avium-intracellulare</i>), <i>Nocardia asteroides</i> , <i>Klebsiella pneumoniae</i> , <i>Staphylococcus aureus</i>
Viral	Herpes simplex, HIV, coxsackie, cytomegalovirus
Fungal	Histoplasma, cryptococcus
Uraemia	
Neoplastic	
	Kaposi's sarcoma
	Lymphoma
Fibrinous pericarditis	
Idiopathic	
Vascular lesions	
Fibrocalcific degenerative arteriopathy	
Vasculitis, perivasculitis	
Aneurysms	
Atherosclerotic lesions	

The infecting organisms listed here are not exhaustive and are examples only.
HIV, human immunodeficiency virus.
Adapted with permission from Arshad *et al.*³

deaths.⁷ Median survival is 101 days in patients with left ventricular dysfunction compared with 472 days in HIV patients with a normal echocardiogram at the same stage of infection.¹¹ Similarly, a longitudinal, prospective study of HIV infected infants and children found that left ventricular dysfunction was a significant predictor of overall mortality, even after adjustment for age, height, CD4 cell count, and progressive neurological disease.⁹

Mechanisms

Dilated cardiomyopathy occurs late in the course of HIV infection and is usually associated with a significantly reduced CD4

count.¹¹ Pathological examination shows endocardial fibrosis and mural thrombus, particularly at the apex, and histological evidence of myocyte hypertrophy and degeneration with increased interstitial and endocardial fibrillar collagen, often associated with evidence of previous myocarditis (fig 1). The pathogenesis remains uncertain: speculated causes include direct infection of the heart by HIV itself, toxic effects of anti-retroviral therapy, effects of circulating or systemic toxins, infection of the heart by opportunistic pathogens, toxicity of alcohol, illicit or self prescribed substances, and nutritional disorders. Indeed, several of these factors may operate in an individual patient.

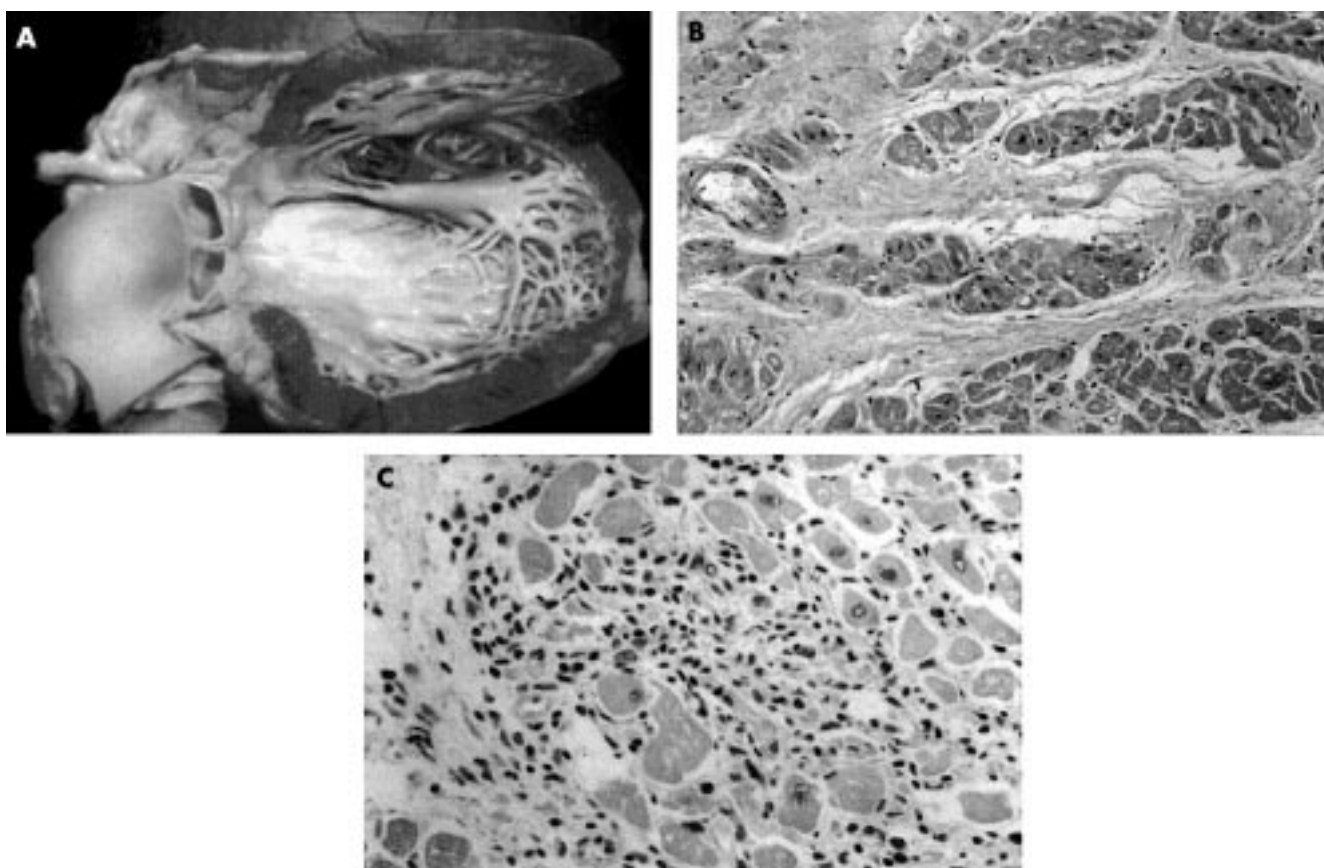


Figure 1 HIV related cardiomyopathy. (A) The heart is enlarged, principally from ventricular dilatation, and there is mild hypertrophy with diffuse endocardial fibrous thickening. Histological examination (B) may reveal myocyte hypertrophy with increased interstitial collagen or (C) evidence of myocarditis with lymphocytic infiltrate and myocyte necrosis. Reproduced with permission from D'Amati *et al.*⁵ Copyright 2001 New York Academy of Sciences, USA.

Direct correlation between histological cardiac abnormalities and clinical or functional heart muscle disease has not been established, making it difficult to determine whether cardiomyopathy is related directly to the presence of the virus or triggering of overt myocarditis. In one prospective study of 952 asymptomatic HIV positive patients, an echocardiographic diagnosis of dilated cardiomyopathy was made in 76 (8%) patients with a mean annual incidence of 15.9/1000 patients. All patients with echocardiographic abnormalities underwent myocardial biopsy: myocarditis was present in 63 (83%) of the patients with dilated cardiomyopathy, and 36 (57%) of these had a positive hybridisation signal for HIV. Co-infection with coxsackie virus, cytomegalovirus, and Epstein-Barr virus was also noted in many cases.¹⁰ HIV virions may infect cardiac myocytes resulting in injury as a result of direct toxicity or activation of multifunctional cytokines (for example, endothelin-1, tumour necrosis factor α , interleukin-6).^{w10} The mode of entry of HIV into myocytes remains unclear since they are CD4 receptor negative. Further putative mechanisms of tissue damage include postviral autoimmunity and immune system dysregulation,^{w12} adverse effects of viral proteins (including apoptosis), interference with β adrenergic stimulation, and transcriptional activation of cellular genes.^{w13}

HIV infection may persist in reservoir cells within the myocardium and cerebral cortex despite antiretroviral therapy and be associated with chronic release of cytotoxic cytokines.^{w14} Thus, patients with encephalopathy have a higher likelihood of death from congestive heart failure than non-encephalopathic controls (hazard ratio 3.4). Malnutrition and wasting are also important predictors of cardiac morbidity and

mortality in HIV infection. There is a relation between trace element deficiency and cardiomyopathy, and the cardiac virulence of coxsackie virus is enhanced by selenium deficiency. Indeed, selenium supplementation has been shown to improve cardiac dysfunction in AIDS patients.^{w15}

Investigation

Echocardiography is helpful in the diagnosis of dilated cardiomyopathy and may also detect diastolic dysfunction in early disease.^{w16} Computed tomography or magnetic resonance imaging may help to clarify the aetiology, especially in cases secondary to neoplastic infiltration. The need for routine myocardial biopsy is controversial and associated risks are significant—sensitivity is low, especially in patchy lesions, and beyond research protocols its use is limited to patients with extensive cardiac damage with no identifiable cause.

Treatment

Treatment for HIV related cardiomyopathy is generally similar to that for non-ischæmic cardiomyopathy. Angiotensin converting enzyme inhibitors and β blockers are recommended but may be poorly tolerated because of low systemic vascular resistance from diarrhoeal disease, infection or dehydration. Patients with myocarditis have enhanced sensitivity to digoxin and anticoagulation presents risks to patients with cerebral vasculopathy and possible aneurysm formation. The use of immunosuppressive regimens is controversial and no convincing benefits have been reported other than with intravenous immunoglobulin,^{w11} whose efficacy may reflect inhibition of cardiac autoantibodies by competition with F_c receptors or dampened effects of cytokines and cellular growth factors.^{w17}

ENDOCARDIAL DISEASE

Three forms of endocarditis have been reported in HIV infected patients: marantic (non-bacterial thrombotic), bacterial, and fungal.

Marantic endocarditis

Marantic endocarditis can involve all four cardiac valves though left sided lesions are more common. Vegetations are friable, consisting of platelets within a fibrin mesh with a few inflammatory cells, and systemic embolism is common.^{w18} The condition, which is usually associated with hypercoagulable states in systemic lupus erythematosus, disseminated intravascular coagulation, and malignancy, is difficult to diagnose ante-mortem. Identification was frequent in early postmortem studies of patients with HIV infection, but the condition is now less commonly encountered, suggesting that its prevalence was overestimated in the past.

Bacterial endocarditis

Bacterial endocarditis in HIV infection is infrequent, appearing almost exclusively in intravenous drug users where prevalence varies from 6.3–34%.² In North America, where most HIV affected patients are homosexuals, endocarditis is uncommon. Intravenous drug users have frequent bacteraemias owing to the introduction of skin pathogens and talcum powder by unsterile intravenous injection. Vegetations form on the tricuspid and pulmonary valve with resultant pulmonary embolism and septic pulmonary infarction (fig 2). Patients typically present with fever, sweats, weight loss, and co-existing pneumonia and/or meningitis. Infection affecting the left heart with systemic embolism is less common. Overall incidence of endocarditis in this group is falling, an unexpected benefit of needle exchange and health education schemes,¹² and overdose is a more common cause of death.^{w19} *Staphylococcus aureus* is the most common organism (> 75%) followed by *Streptococcus pneumoniae* and *Haemophilus influenzae*, although these patients are also at increased risk of *Salmonella* infection.^{w20} Methicillin resistant staphylococci have been reported, and the HACEK group of organisms (*Haemophilus aphrophilus*, *Haemophilus paraprothophilus*, *Haemophilus influenzae*, *Haemophilus parainfluenzae*, *Actinobacillus actinomycetemcomitans*, *Cardiobacterium hominis*, *Eikenella corrodens*, *Kingella* species) should be considered in cases which are resistant to culture. Austrian's syndrome, characterised by acute streptococcal endocarditis, pneumococcal pneumonia, and meningitis, originally described in alcoholics, is also more common in AIDS patients.^{w21}

Fungal endocarditis

Fungal endocarditis is usually the result of systemic fungaemia. *Aspergillus* endocarditis has been reported in association with pulmonary aspergillosis, and cryptococcal and candidal endocarditis may complicate primary infection in the oropharynx and oesophagus, particularly in patients nursed on intensive care units.

Excepting the late stages of AIDS, HIV infection appears to have little effect on susceptibility to or mortality from endocarditis, and aggressive treatment with conventional antibiotic regimens and surgery when required are appropriate. Medical treatment is successful in > 70% of cases and surgery also has good outcome, provided that intravenous drug abuse does not resume in the postoperative period.^{w22}

PERICARDIAL DISEASE

Pericardial disease is a frequent cardiovascular manifestation of HIV infection often associated with shortened survival,

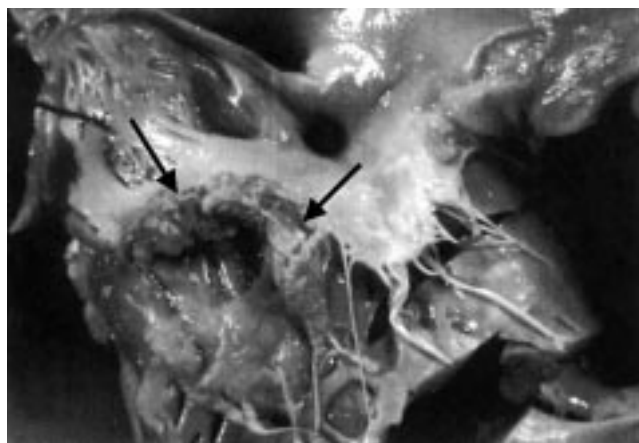


Figure 2 Infective endocarditis of the tricuspid valve in an HIV positive drug user with a large polypoid thrombotic lesion attached to the posterior leaflet (arrow). Reproduced with permission from D'Amati *et al.*⁵ Copyright 2001 New York Academy of Sciences, USA.

independent of CD4 count and albumin values.^{6 13} The prevalence of pericardial disease at echocardiography ranges from 10–59%³ and was 21% in the largest series of 1139 patients.¹³ In Africa and many US urban settings, pericardial effusion associated with HIV is now the most frequent cause of pericardial disease.^{w23 w24} The clinical spectrum includes effusions with and without cardiac tamponade, constrictive pericarditis, and neoplastic infiltration by lymphoma and Kaposi's sarcoma. There is no apparent correlation between clinical stage of HIV infection and severity of pericardial involvement.^{w25}

Pericarditis is usually non-specific in origin and can occur with or without effusion. Initial symptoms and signs may be subtle but include chest pain and signs of tamponade and hypotension. Low pressure tamponade may be encountered in patients with AIDS who are severely dehydrated and cachectic with low resting right ventricular filling pressures. The cause of pericardial effusion is frequently difficult to determine though it may be associated with Kaposi's sarcoma, lymphoma, and bacterial (*Mycobacterium* species, *Nocardia* species, *Staphylococcus aureus*), viral (herpes simplex, cytomegalovirus), and fungal (*Cryptococcus neoformans*) infection. In one typical series of 66 HIV patients with cardiac tamponade, 26% were caused by tuberculosis, 17% were purulent, 8% were caused by atypical mycobacteria, and 10% by Kaposi's sarcoma and lymphoma.^{w26} HIV itself has been isolated from macrophages within the pericardial fluid of one patient, though its role remains uncertain.^{w27} Culture of pericardial fluid is often unrevealing and effusion may be part of a generalised serous effusive process also involving pleural and peritoneal surfaces, possibly related to enhanced expression of cytokines (for example, tumour necrosis factor α) in the later stages of HIV disease.⁶

Small asymptomatic effusions do not require diagnostic evaluation and spontaneously resolve in up to 42% of patients.⁶ Tuberculosis in AIDS is often atypical with a high prevalence of extrapulmonary manifestations, and in areas such as Africa where the incidence of tuberculous infection is high, patients with pericardial effusion often receive empirical antituberculous chemotherapy. Pericardiocentesis is currently recommended for patients with large or poorly tolerated effusions, diagnostic assessment in the presence of systemic illness, or cardiac tamponade. The effects of HAART on pericardial effusion are unknown.

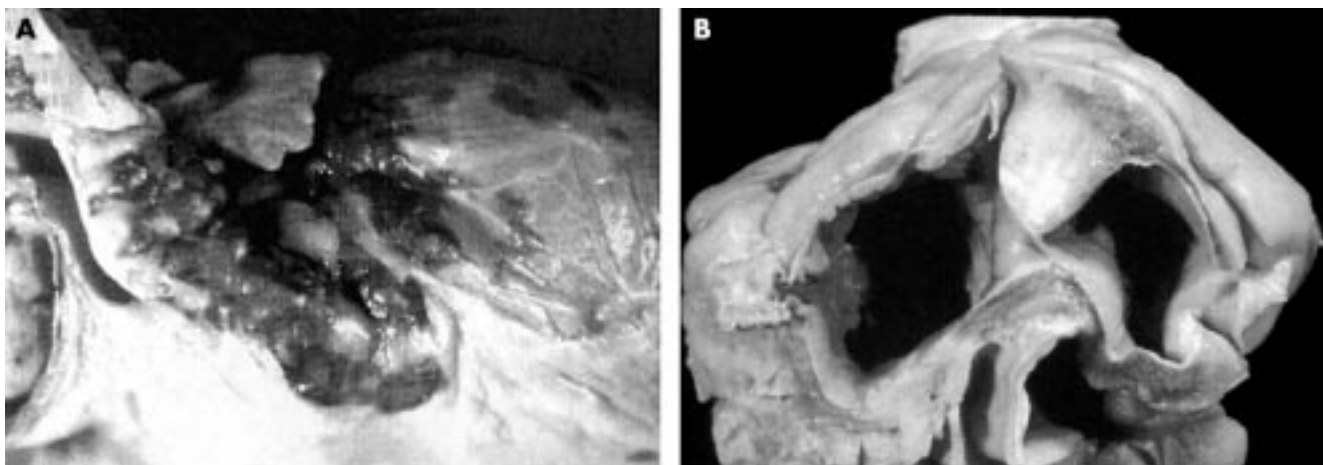


Figure 3 (A) Cardiac Kaposi's sarcoma with typical red purple coalescent epicardial plaques. Histological examination reveals spindle cells surrounding slit-like capillary vessels. (B) HIV related large cell B immunoblastic lymphoma involving the interatrial septum. Histological examination demonstrates lymphomatous myocardial infiltration associated with diffuse myocardial damage. Reproduced with permission from D'Amati *et al.*⁵ Copyright 2001 New York Academy of Sciences, USA.

MALIGNANT DISEASE

Two types of malignancy affect the heart in HIV patients: Kaposi's sarcoma, and malignant lymphoma, of which the former is more common.^{w28}

Kaposi's sarcoma

Kaposi's sarcoma is a low grade neoplasm arising from mesenchymal or endothelial cells and occurs in approximately 30% of AIDS patients, mostly male homosexuals. Cardiac involvement usually reflects a widely disseminated process. Visceral and parietal pericardial lesions are most common though involvement of the myocardium, coronary arterial adventitia, great vessels, epicardium, and epicardial fat has also been described.^{w18} Nodular coalescent dark red or violaceous plaques are characteristic (fig 3A) and histological examination reveals nodular lesions formed by spindle cells surrounding slit-like capillary vessels. Cardiac Kaposi's sarcoma is usually occult and rarely diagnosed during life. Pericardial involvement may rarely manifest as tamponade or constriction and underlying myocardial function is rarely affected.

Malignant lymphoma

The frequency of non-Hodgkin's lymphoma in patients with AIDS is increasing and estimated to be 25–60 times greater than expected in the general population. Lymphomas are observed in 5–10% of patients infected with HIV and constitute the first manifestation of AIDS in 3–4% of new cases.¹⁴ Most non-Hodgkin's lymphomas affecting the heart in HIV infection are high grade, with Burkitt-like cells, reticular cell sarcomas, or large cell immunoblastic sarcomas. The majority originate from B cells and display monoclonal immunoglobulin staining. Pathological examination demonstrates pallor of the heart secondary to diffuse lymphomatous infiltration or patchy involvement of the epicardium, myocardium, and endocardium in the form of focal circumscribed nodules, most frequently affecting the right atrium (fig 3B). Histological sections contain infiltrates of plasmacytoid lymphocytic cells, resembling immunoblastic non-Hodgkin's lymphoma, and evidence of intense mitotic activity. Extracardiac sites of lymphoma (typically the central nervous system, gastrointestinal tract, and bone marrow) are common and metastatic cardiac involvement may reflect this dissemination. Secondary cardiac involvement may also arise by

direct extension of a mediastinal mass through the pericardium. Primary cardiac lymphoma is extremely rare but has been reported in patients with HIV.^{w29}

Clinical manifestations of cardiac lymphoma include cardiomegaly, pericardial effusion, congestive heart failure, arrhythmias or progressive heart block. Sudden death is rare and most patients have no evidence of cardiac dysfunction. Outcome is usually poor and the optimal approach to treatment has yet to be determined, though clinical remission has been obtained with combination chemotherapy.¹⁴

VASCULAR DISEASE

Arterial lesions associated with HIV infection have been reported in children and adults and include arteriopathy with and without aneurysm formation, fibrocalcific lesions, and endothelial proliferation in association with Kaposi's sarcoma. Inflammatory lesions (vasculitis or perivasculitis) may affect vessels in the brain and myocardium whereas fibrocalcific lesions, consisting of intimal fibrosis with medial calcification, aneurysm formation, and variable luminal narrowing are usually more widespread.^{w30} Premature atherosclerosis has also been observed in young adults in the absence of major risk factors or treatment with protease inhibitors. The pathogenesis is unclear but HIV itself may be implicated.^{w31} The observation of vascular disease in children and young adults suggests that arteriopathy will be seen with increasing frequency and severity as prolonged survival is achieved in HIV infection.

DRUGS AND CARDIOTOXICITY

Until recently, the prognosis of AIDS was so poor that concerns about long term effects of drug treatment were

Nucleoside transcriptase inhibitors	Non-nucleoside transcriptase inhibitors	Protease inhibitors
Zidovudine	Nevirapine	Saquinavir
Didanosine	Delavirdine	Ritonavir
Zalcitabine	Efavirenz	Indinavir
Stavudine		Nelfinavir
Lamivudine		Amprnavir
Abacavir		Lopinavir

Table 3 Drugs with potential cardiotoxicity used in HIV

Drug	Use in HIV	Cardiotoxicity
Nucleoside transcriptase inhibitors	HIV disease	Cardiomyopathy
Non-nucleoside transcriptase inhibitors	HIV disease	Increased coronary vascular risk
Protease inhibitors	HIV disease	Increased coronary vascular risk
Anti-infective drugs	Opportunistic infections	
Erythromycin		Prolonged QT interval
Trimethoprim/sulfamethoxazole		Prolonged QT interval
Clarithromycin		Prolonged QT interval
Pentamidine		Prolonged QT interval
		Ventricular arrhythmias
		Orthostatic hypotension
Pyrimethamine		Prolonged QT interval
Fluoroquinolones		Prolonged QT interval
Amphotericin B		Prolonged QT interval
		Hypokalaemia
		Bradycardia
		Hypertension
Azole antifungals		Prolonged QT interval
Ganciclovir		Ventricular arrhythmias
Foscarnet		Cardiomyopathy
Psychotropic drugs	Psychotic disorders, depression	
Tricyclic antidepressants		Prolonged QT interval
Phenothiazines		Prolonged QT interval
Antihistamines	Allergic reactions	
Astemizole		Prolonged QT interval
Terfenadine		Prolonged QT interval
Chemotherapy regimens	HIV related neoplasms	
Anthracyclines		Cardiomyopathy (acute/chronic)
		Ventricular arrhythmias
		Heart block
		Hypertension
Vincristine		Coronary heart disease
Interferon α	Kaposi's sarcoma, Hepatitis C infection	Cardiomyopathy
		Coronary heart disease
Interleukin-2	HIV disease	Cardiomyopathy
		Coronary heart disease
Erythropoietin α	Chronic anaemia	Hypertension
Cocaine	Recreational	Hypertension
		Coronary heart disease (dissection)
		Cardiomyopathy
		Myocarditis
Anabolic steroids	Weight gain/recreational	Coronary heart disease

minor. The advent of potent antiretroviral drugs has had an impressive effect on mortality, disease progression, and incidence of HIV related disorders. Indeed, HIV infection should be considered a chronic condition in an increasing proportion of patients, and issues relating to long term drug treatment are of increasing relevance.¹⁵ A most important field of research is the possible increase of cardiovascular risk in patients treated with protease inhibitors.

Antiretroviral therapy

There are three classes of drugs presently used for people with HIV infection (table 2): nucleoside reverse transcriptase inhibitors, non-nucleoside reverse transcriptase inhibitors, and protease inhibitors. The current standard of treatment is a protease inhibitor or a non-nucleoside reverse transcriptase inhibitor combined with two nucleoside reverse transcriptase inhibitors, although modifications of this regimen are in constant evolution.^{w32}

Cardiomyopathy

Zidovudine was the first widely available antiretroviral drug and is still used in pregnant mothers who are HIV positive (and their newborns) and in combination regimens. Drug induced dilated cardiomyopathy secondary to mitochondrial toxicity has been associated with its use in adults and children.

Dyslipidaemia and cardiovascular risk

Hyperlipidaemia, hyperglycaemia, hyperinsulinaemia, and lipodystrophy are frequent adverse effects of potent antiretroviral combination therapy, particularly involving protease inhibitors.¹⁶ Hyperlipidaemia affects approximately 50% of patients using protease inhibitors, with average increases in total cholesterol and triglyceride concentrations of 28% and 96%, respectively.^{w33} The degree of increase seems to be proportional to the duration of treatment and type of drug.

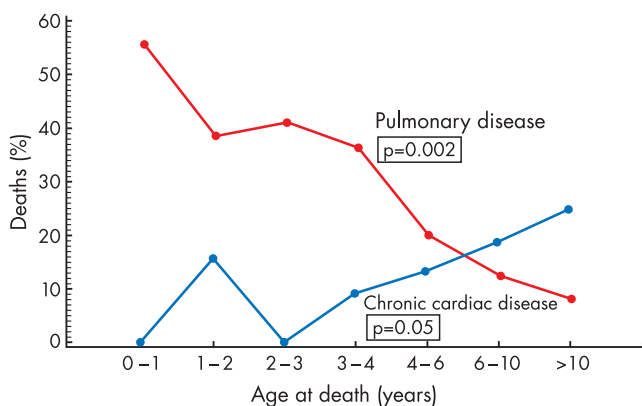


Figure 4 Linear age trends for the underlying cause of 93 HIV related deaths in children. Reproduced with permission from Langston C *et al.* Human immunodeficiency virus-related mortality in infants and children: data from the pediatric pulmonary and cardiovascular complications of vertically transmitted HIV (P²C²) study. Copyright *Pediatrics* 2001;107:328–38.

Recent reports of myocardial infarction in young patients receiving protease inhibitors have focused interest on the association between HIV infection, antiretroviral therapy, and coronary artery disease. For example, in a small French study, patients treated with protease inhibitors had an almost three-fold increase in risk of myocardial infarction compared with untreated controls, suggesting that rapidly forming drug induced plaques are unstable and prone to rupture.^{w34} Larger studies addressing the underlying abnormalities of endothelial function and anticoagulation and broader epidemiological issues are underway.

Preliminary guidelines for the evaluation and management of dyslipidaemia in HIV positive patients receiving HAART have recently been published.¹⁷ Key points are routine screening, lifestyle advice (including smoking cessation), comprehensive lipid analysis before commencing antiretroviral therapy, and treatment of selected cases. Statins which are independent of the cytochrome P450 system (for example, pravastatin, atorvastatin) are recommended to avoid interaction with protease inhibitors, and use of fibrates and gemfibrozil has been described in patients with isolated hypertriglyceridaemia.

In some patients, with high atherosclerotic co-morbidity or risk, a high CD4+ cell count, and low viral load, the risk:benefit ratio of treatment with HAART may be questionable.

Drugs used for HIV related disorders

Drugs used for HIV related diseases may have adverse cardiac effects including cardiomyopathy, QTc prolongation with increased risk of arrhythmia, and acceleration of coronary disease (table 3). Arrhythmias may be precipitated in QTc prolongation by concomitant use of drugs that share the CY3PA metabolic pathway (including protease inhibitors) and clinicians should be aware of this potentially dangerous interaction.

MISCELLANEOUS Paediatric disease

As the number of children living with HIV increases so will the number that suffer with cardiovascular complications. Cardiac mortality increases in frequency with increasing age (fig 4). The vast majority of HIV positive children acquired the virus soon or after birth. The rate of vertical transmission has substantially decreased in recent years owing to administration of

HIV and cardiovascular medicine: key points

- ▶ Approximately 36 million people worldwide are infected with HIV, including over one million children
- ▶ Significant cardiac disease affects 10–20% of patients infected with HIV and is the cause of death in approximately 5%
- ▶ HIV related cardiomyopathy has a poor prognosis, especially in patients with a low CD4 count or coexistent encephalopathy; pathogenesis is multifactorial and treatment options are limited
- ▶ Other frequent cardiac manifestations of HIV infection include opportunistic infection, infective endocarditis (especially affecting intravenous drug users), pericardial effusion, neoplasm (Kaposi's sarcoma/lymphoma), and pulmonary hypertension
- ▶ Premature vascular disease is an emerging problem, especially in patients receiving combination antiretroviral therapy
- ▶ Cardiac surgery is well tolerated by patients with HIV/AIDS. The risks of transmission to the surgeon are low

antiretroviral therapy during pregnancy and delivery. Fetal echocardiography has demonstrated that fetuses of HIV positive mothers have abnormal cardiovascular structure and function, including increased right and left ventricular wall thickness. The incidence of congenital cardiovascular malformations does not differ from matched HIV negative controls.^{18 w35} Frequently encountered cardiovascular manifestations of HIV infection in children include increased left ventricular mass with systolic dysfunction, myocarditis (usually related to adenovirus and cytomegalovirus), vascular disease, aortic root dilatation, pericardial effusions, tumours, and minor ECG abnormalities.¹⁸ Encephalopathy, wasting, decreased CD4 count, Epstein-Barr virus infection, and a prior history of a serious cardiac event all predict cardiac complications of HIV infection in children.^{w36}

Pulmonary hypertension and right ventricular dysfunction

Primary pulmonary hypertension has been reported in HIV infected patients without evidence of thromboembolic disease, intravenous drug use, right sided endocarditis or pulmonary infection.^{w37} Development and progression bear no relation to the stage of underlying HIV disease. It affects about 0.5% of hospitalised AIDS patients and is a cause of severe cardiac impairment with associated cor pulmonale and death.⁶ Histological examination most frequently demonstrates plexogenic pulmonary arteriopathy. The pathogenesis is multifactorial and poorly understood: HIV may cause endothelial damage and vasoconstriction through release of endothelin-1, interleukin-6, and tumour necrosis factor α . HIV may also be identified in alveolar macrophages which release tumour necrosis factor α , oxide anions, and proteolytic enzymes in response to infection. Therapeutic effects of oxygen, steroids, calcium channel blockers, epoprostenol, and nitric oxide have all been proposed though efficacy has not been confirmed in controlled clinical trials.¹⁹ Effects of HAART on pulmonary artery endothelial cells are unknown.

Autonomic dysfunction

HIV infection may be associated with abnormalities of the autonomic nervous system, particularly in advanced disease. Cardiovascular autonomic reflexes may be profoundly affected causing postural hypotension, syncope, and cardiorespiratory

arrest during invasive procedures. Prevalence varies from 5–77%, according to definition.^{w38} The cause is unknown although HIV is neurotropic and has been isolated from peripheral nerve tissue. Underlying myocardial disease is not implicated.^{w39}

CARDIAC SURGERY

As long term survival improves, the number of potential patients with degenerative and acquired coronary artery and valvar heart disease coming forward for cardiac surgery rises. As experience in this difficult area increases, initial fears that cardiopulmonary bypass might accelerate progression of HIV infection to AIDS and its complications have not been borne out.^{w40} HIV infected patients and those with established AIDS have shown considerable tolerance to major cardiac and pulmonary surgery. Survival and complication rates do not differ significantly from those reported in HIV negative patients, although recurrent endocarditis remains a problem in intravenous drug addicts unable to refrain from continued high risk behaviour.²⁰

Concerns that surgeons would be exposed to significant risk of acquiring HIV infection have also been unfounded. With drug induced preoperative reduction of viral load, use of appropriate precautions and chemoprophylaxis in the event of needlestick injury, no definite transmission to a surgeon during cardiac surgery has been reported. Paradoxically, surveys indicate widespread fear of HIV infection and poor knowledge of and compliance with guidelines for universal precautions, exposing surgeons to the higher risks of hepatitis B and C which are more easily transmitted than AIDS and may be fatal.²⁰ Similar ignorance has been reported in the attitudes of hospital doctors towards mouth-to-mouth resuscitation.^{w41}

CONCLUSION

With current advances in HIV/AIDS management and increased survival, cardiac manifestations of HIV disease will become more important and encountered more frequently. HAART is only available to a minority of HIV infected individuals worldwide and studies from the pre-HAART period still apply. Since cardiac complications are often clinically inapparent, periodic screening of HIV positive patients by means of a three monthly ECG and six monthly echocardiogram is recommended, especially in those with low CD4 counts or receiving treatment with zidovudine. Risk factors for vascular disease should be monitored in patients receiving HAART.

The heart may be a marker of the HIV infected patient's overall health, and a decline in cardiac function should trigger more comprehensive evaluation. As the role of infection and inflammation in many other cardiovascular diseases is now recognised, identification of the molecular mechanisms of HIV related heart disease may have broader implications for a wide range of patients.

REFERENCES

- 1 **Lewis W.** Cardiomyopathy in AIDS: a pathophysiological perspective. *Prog Cardiovasc Dis* 2000;**43**:151–70.
- ▶ **A detailed review of the pathogenesis, pathophysiology, and epidemiology of HIV related cardiomyopathy with summaries of recent basic scientific advances and proposed in vivo models. Contains 226 references.**
- 2 **Barbaro G,** Fisher SD, Pellicelli AM, *et al.* The expanding role of the cardiologist in the care of HIV infected patients. *Heart* 2001;**86**:365–7.

- ▶ **A concise review article summarising the everyday cardiac complications of HIV infection likely to present to the busy practising cardiologist.**
- 3 **Arshad A,** Bansal A, Patel RC. Cardiac complications of human immunodeficiency virus infection: diagnostic and therapeutic considerations. *Heart Disease* 2000;**2**:133–45.
- ▶ **A more detailed comprehensive review outlining the cardiac complications of HIV infection described to date. Contains 162 references.**
- 4 **Yunis NA,** Stone VE. Cardiac manifestations of HIV/AIDS: a review of disease spectrum and clinical management. *J Acquir Immune Defic Syndr Hum Retroviral* 1998;**18**:145–54.
- 5 **D'Amati G,** Di Gioia CR, Gallo P. Pathological findings of HIV-associated cardiovascular disease. *Ann N Y Acad Sci* 2001;**946**:23–45.
- ▶ **A superbly illustrated review focusing on HIV associated cardiovascular pathology, correlating the morphologic findings to clinical syndromes of HIV and AIDS.**
- 6 **Rerkpattanapit P,** Wongpraparut N, Jacobs LE, *et al.* Cardiac manifestations of acquired immunodeficiency syndrome. *Arch Intern Med* 2000;**160**:602–8.
- 7 **Milei J,** Grana D, Fernández Alonso G, *et al.* Cardiac involvement in acquired immunodeficiency syndrome – a review to push action. *Clin Cardiol* 1998;**21**:465–72.
- 8 **Aufran BR,** Gorin I, Leibowitch M, *et al.* AIDS in a Haitian woman with cardiac Kaposi's sarcoma and Whipple's disease. *Lancet* 1983;**i**:767–8.
- ▶ **The first clinical description of cardiovascular disease complicating HIV infection.**
- 9 **Lipshultz SE,** Easley KA, Orav EJ, *et al.* Cardiac dysfunction and mortality in HIV-infected children. The prospective P²C² HIV multicenter study. *Circulation* 2000;**102**:1542–8.
- ▶ **A landmark paper describing the outcome of the first major epidemiological study of cardiovascular problems associated with HIV infection in a cohort of vertically infected children.**
- 10 **Barbaro G,** Di Lorenzo G, Grisorio B, *et al.* Incidence of dilated cardiomyopathy and detection of HIV in myocardial cells of HIV-positive patients. *N Engl J Med* 1998;**339**:1093–9.
- ▶ **A prospective long term clinical and echocardiographic follow up study of 952 asymptomatic HIV positive patients reporting the incidence of dilated cardiomyopathy and demonstrating a direct pathological role of HIV.**
- 11 **Lipshultz SE,** Orav EJ, Sanders SP, *et al.* Immunoglobulins and left ventricular structure and function in pediatric HIV infection. *Circulation* 1995;**92**:2220–5.
- 12 **Currie PF,** Sutherland GR, Jacob AJ, *et al.* A review of endocarditis in acquired immunodeficiency syndrome and human immunodeficiency syndrome. *Eur Heart J* 1995;**16**(suppl B):15–18.
- 13 **Heidenreich PA,** Eisenberg MJ, Kee LL, *et al.* Pericardial effusion in AIDS: incidence and survival. *Circulation* 1995;**92**:3229–34.
- 14 **Duong M,** Dubois C, Buisson M, *et al.* Non-Hodgkin's lymphoma of the heart in patients infected with human immunodeficiency virus. *Clin Cardiol* 1997;**20**:497–502.
- 15 **Fantoni M,** Autore C, Del Borgo C. Drugs and cardiotoxicity in HIV and AIDS. *Ann N Y Acad Sci* 2001;**946**:179–99.
- ▶ **A comprehensive review of cardiovascular problems associated with drug therapy in HIV infection with special emphasis on premature vascular disease related to highly active antiretroviral therapy. Contains 142 references.**
- 16 **Périard D,** Telenti A, Sudre P, *et al.* Atherogenic dyslipidaemia in HIV-infected individuals treated with protease inhibitors. *Circulation* 1999;**100**:700–5.
- 17 **Dubé MP,** Sprecher D, Henry WK, *et al.* Preliminary guidelines for the evaluation and management of dyslipidaemia in adults infected with human immunodeficiency virus and receiving antiretroviral therapy: recommendations of the adult AIDS clinical trial group cardiovascular disease focus group. *Clin Infect Dis* 2000;**31**:1216–24.
- ▶ **Summary guidelines for the screening and treatment of vascular risk factors in patients scheduled for treatment with highly active antiretroviral therapy.**
- 18 **Keesler MJ,** Fisher SD, Lipshultz SE. Cardiac manifestations of HIV infection in infants and children. *Ann N Y Acad Sci* 2001;**946**:169–78.
- 19 **Mehta NJ,** Khan IA, Mehta RN, *et al.* HIV-related pulmonary hypertension: analytic review of 131 cases. *Chest* 2000;**118**:1133–41.
- 20 **Frater RW.** Cardiac surgery and the human immunodeficiency virus. *Semin Thorac Cardiovasc Surg* 2000;**12**:145–7.
- ▶ **A discussion paper outlining current views on cardiac surgery in patients with HIV infection.**



Additional references appear on the *Heart* website—www.heartjnl.com/supplemental