

STOMACH

PDX1 homeobox protein expression in pseudopyloric glands and gastric carcinomas

H Sakai, Y Eishi, X-L Li, Y Akiyama, S Miyake, T Takizawa, N Konishi, M Tatematsu, M Koike, Y Yuasa

Gut 2004;53:323-330. doi: 10.1136/gut.2003.026609

See end of article for authors' affiliations

Correspondence to:
Professor Y Yuasa,
Department of Molecular
Oncology, Graduate
School of Medicine and
Dentistry, Tokyo Medical
and Dental University, 1-5-
45, Yushima, Bunkyo-ku,
Tokyo 113-8519, Japan;
yuasa.monc@tmd.ac.jp

Accepted for publication
30 September 2003

Background and aims: Although it has been reported that intestinal metaplasia implicated in gastric carcinogenesis is induced by the ParaHox gene *CDX2*, it is unclear which genes are responsible for the formation of pseudopyloric glands and whether they play a role in gastric carcinogenesis. *Pancreatic-duodenal homeobox 1 (PDX1)* is also a ParaHox gene which contributes to the genesis and development of the pancreas, duodenum, and antrum. To clarify its significance for the formation of pseudopyloric glands and gastric carcinogenesis, we investigated expression of PDX1 and mucin in gastric carcinomas and surrounding mucosa.

Methods: Gastric carcinoma tissues from 95 patients were used for immunohistochemical analyses of PDX1, and mucins MUC6 and MUC5AC.

Results: PDX1 was found to be frequently expressed in pseudopyloric glands and intestinal metaplasia. MUC6 was more abundant than MUC5AC in pseudopyloric glands while higher levels of MUC5AC than MUC6 were evident in intestinal metaplasia. The frequency of PDX1 positive reactivity was higher in differentiated type carcinomas (39/43, 90.7%) and T1 carcinomas (42/43, 97.7%) than in undifferentiated type (33/52, 63.5%) and T2-4 (30/52, 57.7%) carcinomas. PDX1 and MUC6 double positive expression was observed in carcinomas, respectively, including the corpus, and also correlated with histological type and depth of invasion. In contrast, no link was apparent between PDX1 and MUC5AC double positive reactivity and histological type.

Conclusion: Our study suggests that PDX1 plays an important role in the development of pseudopyloric glands, and that pseudopyloric glands may reflect a condition associated with gastric carcinogenesis.

Gastric carcinomas are histologically classified into intestinal and diffuse types by the Laurén classification.¹ Corresponding terms for these carcinomas are low (well and moderately differentiated types) and high (poorly differentiated type) grade according to the WHO histological classification,² and differentiated and undifferentiated types in the classification proposed by the Japanese Gastric Cancer Association³ according to the gland forming tendency. Patients with resected early gastric carcinoma have a good prognosis, their five year survival rate being approximately 95%.²⁻⁴ Differentiated type gastric carcinomas are found in about 60% of early gastric carcinomas⁴ and approximately 80% of minute carcinomas less than 5 mm.⁵⁻⁶ In contrast, cases with undifferentiated tumours often have a worse prognosis.² Differentiated type gastric carcinomas are thought to arise from intestinal metaplasia,⁷ which in turn is found in cases of atrophic gastritis.⁷ Pseudopyloric glands are also often seen in the mucosa affected by atrophic gastritis⁸ and are regenerative in nature as wound healing of the gastric mucosa.⁹⁻¹⁰ Cells with clear cytoplasm comprise pseudopyloric glands as well as pyloric glands, replacing glands of the corpus during regeneration.⁹⁻¹⁰

Recently, it has been proposed that several homeobox proteins may be positive or negative tumour modulators.¹¹ We have reported that the caudal homeobox gene *CDX2* is significantly expressed in intestinal metaplasia and differentiated type gastric carcinomas.¹² *CDX2* is a member of the ParaHox family¹³ and functions as a transcription factor during the development of the intestine, but is normally absent from the stomach and oesophagus.¹⁴ Recently, forced expression of *Cdx2* in the gastric mucosa of transgenic mice demonstrated that *Cdx2* alone is sufficient to cause intestinal

metaplasia in the stomach.¹⁵ However, it is unclear which genes are responsible for the formation of pseudopyloric glands and whether other homeobox genes are associated with gastric carcinogenesis.

Pancreatic-duodenal homeobox 1 (*PDX1*), also known as *IPF-1*, *STF1*, or *IDX-1*, is another transcription factor in the ParaHox gene family¹³⁻¹⁶ which plays an essential role in the genesis and development of the pancreas, duodenum, and antrum.¹⁷⁻¹⁸ In adults, *PDX1* expression is observed in the nuclei of pancreatic β cells, Brunner's glands of the duodenum, and pyloric glands of the stomach.¹⁸⁻¹⁹ *Pdx1* knockout mice exhibit pancreatic agenesis and abnormal formation of the pylorus and duodenum.¹⁷⁻²⁰ The human *PDX1* gene is located at chromosome 13q12.1 in the vicinity of the *CDX2* gene.¹³ Given the important role of the latter in the formation of intestinal metaplasia,¹²⁻¹⁵⁻²¹ it is of interest to examine whether *PDX1* might have an equivalent link to pseudopyloric glands.

To clarify the role of *PDX1* in the formation of pseudopyloric glands and gastric carcinogenesis, we investigated *PDX1* expression in gastric carcinomas and surrounding mucosa. We show that *PDX1* is indeed activated at various states of gastric carcinogenesis, providing a novel diagnostic marker, and suggesting that *PDX1*, like *CDX2*, contributes to the

Abbreviations: PDX1, pancreatic-duodenal homeobox 1; MUC6, MUC5AC, mucins MUC6 and MUC5AC; PCR, polymerase chain reaction; GST, glutathione-S-transferase; GST-PDX1, glutathione-S-transferase-PDX1 fusion protein; PBS, phosphate buffered saline; PBST, PBS and 0.05% Tween 20

aberrant differentiation that accompanies carcinogenesis in the stomach.

MATERIALS AND METHODS

Tissue samples and histological examination

In this study, we analysed 95 cases of primary gastric carcinomas, classified as categories 4.2, 4.3, 4.4, and 5 by the Vienna classification,^{22, 23} which were resected in the Affiliated Hospital of the School of Medicine, Tokyo Medical and Dental University, between 2000 and 2002. Informed consent was obtained from all subjects. Resected tissues were fixed in 10% phosphate buffered formalin and paraffin embedded. One paraffin embedded block was selected at the centre portion of the gastric carcinoma in each case. Serial sections were cut to 4 µm and used for histological examination and immunohistochemistry.

Carcinomas were classified as differentiated and undifferentiated types according to the criteria of the Japanese Gastric Cancer Association.³ Following the Laurén classification,¹ well and moderately differentiated tubular adenocarcinomas and papillary adenocarcinomas were included in the differentiated type, and poorly differentiated tubular adenocarcinomas and signet ring cell carcinomas in the undifferentiated type. Depth of invasion was divided into T1 and T2-4, according to the TNM classification.²

Antibody production

The cDNA fragment used encodes 124 amino acids of the N terminus of PDX1 but excludes the homeodomain (GenBank accession number; NM_000209), and was produced by polymerase chain reaction (PCR). The primer set was as follows: 5'-AATTGATCCATGAACGCGAGGAGCAGT-3' (sense) and 5'-GCGCGAATTCTAAGACTTCATCCATGGGAAAGG-3' (antisense). The PCR product was digested with *Bam*HI and *Eco*RI, and cloned into the pGEX-2TK vector (Amersham Biosciences, Piscataway, New Jersey, USA), which was then transfected into competent *Escherichia coli* cells. The sequence of the *PDX1* insert was confirmed by sequencing. Glutathione-S-transferase-PDX1 fusion protein (GST-PDX1) was produced and purified with glutathione Sepharose 4B (Amersham Biosciences) according to the manufacturer's instructions. Rabbits were injected subcutaneously with 0.15 mg of the fusion protein in Freund's complete adjuvant and boosted with 0.3 mg of the same fusion protein in Freund's incomplete adjuvant five times every two weeks. Anti-PDX1 antibody was treated with acetone powder derived from human liver²⁴ to block non-specific cross reactivity.

Derivation of cells expressing PDX1

The *PDX1* cDNA sequence, including the full coding region, was obtained by PCR using cDNA from a gastric carcinoma cell line, KATOIII, with a primer set as follows: 5'-AATTAAGCTTCGGGAGTGGGAACGCCACAC-3' (sense) and 5'-ATATGAATTCAGCAGCTCTGCCTCTCATC-3' (antisense). The *PDX1* PCR product was subcloned into the mammalian expression vector pcDNA3.1 (Invitrogen, Groningen, Netherlands) (pcDNA3.1-PDX1). Plasmid DNA was purified with a HiSpeed Plasmid Midi Kit (Qiagen, Hilden, Germany) and verified by sequencing.

A human gastric carcinoma cell line, GT3TKB, was grown in Dulbecco's modified Eagle's medium containing 10% fetal bovine serum (Sigma, St Louis, Missouri, USA) and 50 µg/ml kanamycin in a humidified atmosphere of 5% CO₂ at 37°C, and transfected with pcDNA3.1-PDX1 using *TransIT* (Mirus, Madison, New York, USA), as described by the supplier. The empty vector was also transfected in parallel as a negative control. After the transfected cells had been cultured for 48 hours and reached confluence, they were washed with

phosphate buffered saline (PBS) and harvested with protein extraction buffer, as previously described.²⁴

Western blotting analysis

Protein extracts (25 µg) were separated by 12% sodium dodecyl sulphate-polyacrylamide gel electrophoresis and the separated proteins transferred to Immobilon-P membranes (Millipore, Bedford, Massachusetts, USA). After blocking for 14 hours at 4°C with 5% dehydrated skim milk (Difco, Detroit, Michigan, USA) in PBST (PBS with 0.05% Tween 20), the membranes were incubated with a 1:1000 dilution of anti-PDX1 antibody for one hour at room temperature, then washed with PBST and incubated with Envision (Dako, Carpinteria, California, USA) diluted at 1:1000 with PBS for 30 minutes. We also used anti-α-tubulin antibody (Santa Cruz Biotechnology, Inc, Santa Cruz, California, USA) for detection of an internal control. After washing, the blotted membranes were developed according to the chemiluminescence ECL protocol recommended by Amersham Biosciences. A predicted band was detected by the anti-PDX1 antibody in

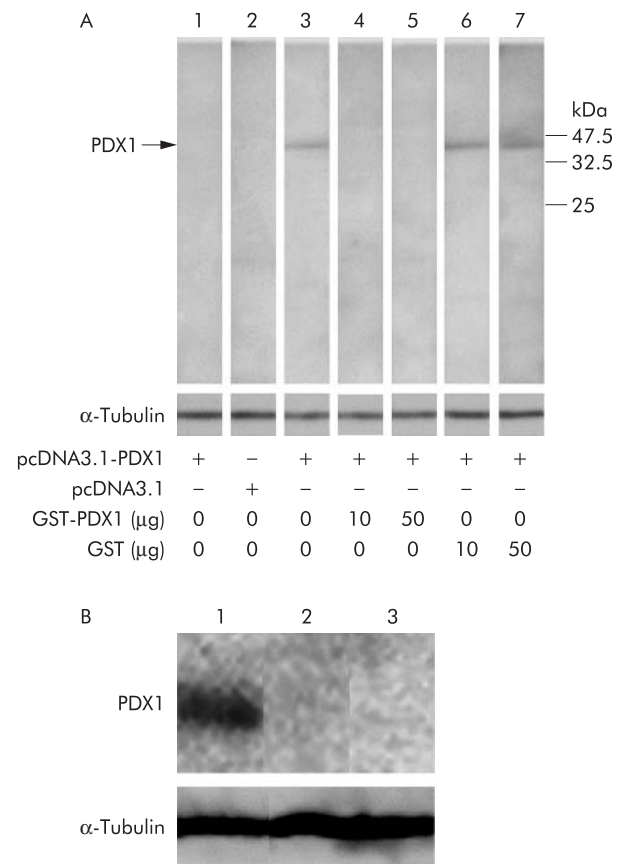


Figure 1 Confirmation of anti-pancreatic-duodenal homeobox 1 (PDX1) antibody by western blot analysis. (A) Lane 1: Band was not detected in GT3TKB transfected with pcDNA3.1-PDX1, reacted with pre-immunised serum; lane 2: no band was seen in GT3TKB transfected with mammalian expression vector without PDX1 cDNA, reacted with anti-PDX1 antibody; lane 3: a predicted band was detected in GT3TKB transfected with pcDNA3.1-PDX1, reacted with anti-PDX1 antibody; lanes 4, 5: the band disappeared in GT3TKB transfected with pcDNA3.1-PDX1, reacted with anti-PDX1 antibody treated with 10 and 50 µg of glutathione-S-transferase (GST)-PDX1, respectively; lanes 6, 7: the band did not fade out in GT3TKB transfected with pcDNA3.1-PDX1, reacted with anti-PDX1 antibody treated with 10 and 50 µg of GST, respectively. α-Tubulin was analysed as an internal control. (B) Lane 1: a band appears in extracted proteins from the normal antrum; lanes 2, 3: no band was observed in proteins from the normal corpus and colon, respectively.

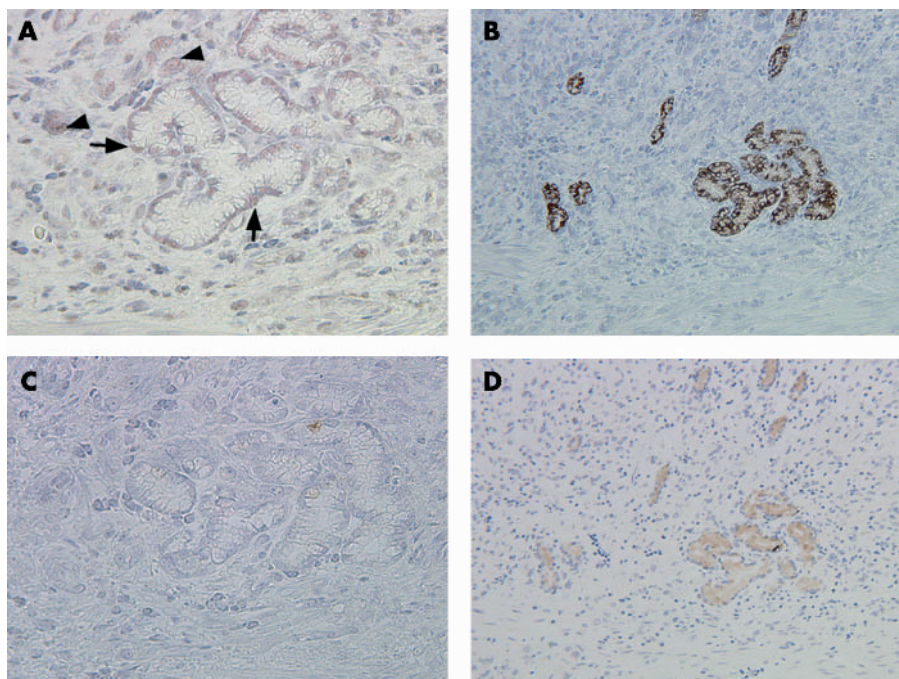


Figure 2 Expression of pancreatic-duodenal homeobox 1 (PDX1), pepsinogen I, and mucins MUC6 and MUC5AC in serial sections through pseudopyloric glands. (A) PDX1 is expressed in pseudopyloric glands surrounding carcinoma cells. Arrows indicate PDX1 expression in the nuclei of pseudopyloric gland cells. Arrowheads indicate PDX1 positive carcinoma cells. (B) MUC6 positive reactivity is also apparent. (C) No MUC5AC is expressed in the pseudopyloric glands. (D) The presence of pseudopyloric glands was confirmed by antihuman pepsinogen I monoclonal antibody staining. Original magnification: A, C, 400 \times ; B, D, 200 \times .

25 μ g of proteins extracted from GT3TKB cells transfected with pcDNA3.1-PDX1 (fig 1A, lane 3) or from the normal antral epithelium (fig 1B, lane 1). But no band was detected in 25 μ g of proteins extracted from GT3TKB cells transfected with pcDNA3.1 (fig 1A, lane 2) and the normal corpus and colonic mucosae (fig 1B, lanes 2 and 3).

Furthermore, we confirmed the specific binding ability of the anti-PDX1 antibody by blocking experiments with the peptide used in the production of the antibody or human GST (Sigma), as described previously.²⁵ After incubation of 1 μ l of the anti-PDX1 antibody with 10 or 50 μ g of GST-PDX1 (fig 1A, lanes 4 and 5) or GST (fig 1A, lanes 6 and 7) for 14 hours at 4 $^{\circ}$ C, these mixtures were used in the blocking experiments. The band disappeared in samples treated with GST-PDX1 but not with GST, indicating the specificity of the anti-PDX1 antibody.

Immunohistochemical analyses

For immunohistochemistry, we employed the anti-PDX1 polyclonal antibodies described above, and anti-mucin6 (MUC6) (CLH5; Novocastra Laboratories Ltd, Newcastle, UK), anti-MUC5AC (45M1; Novocastra Laboratories Ltd), and antipepsinogen I monoclonal antibodies.^{26, 27} Sections were deparaffinised in xylene, rehydrated in ethanol, and then treated with 0.1% hydrogen peroxide in methanol for 30 minutes to inhibit endogenous peroxidase activity. Antigen retrieval for PDX1, MUC6, and MUC5AC was performed by microwaving the specimens in 10 mM citrate buffer (pH 6.0) for 15 minutes, followed by 20 minutes of incubation at room temperature. Antigen retrieval for pepsinogen I was accomplished by digestion with 0.2% trypsin solution in Tris-HCl buffer (0.05 M; pH 7.6) containing 0.1% CaCl₂ at 37 $^{\circ}$ C for 10 minutes. To block non-specific protein binding, we incubated the sections with 10% normal goat serum (Nichirei, Tokyo, Japan). Subsequently, sections were exposed overnight at 4 $^{\circ}$ C to purified anti-PDX1, MUC6,

MUC5AC, or pepsinogen I antibodies, diluted at 1:1200, 1:500, 1:100, and 6 μ g/ml, respectively. After washing with PBS, binding was detected with the Envision+ kit (Dako) for PDX1, the Envision kit for MUC6 and MUC5AC, or the LSAB2 kit (Dako) for pepsinogen I, as recommended by the supplier. All specimens were counterstained with Mayer's haematoxylin. The specificity of anti-PDX1 antibody binding in the immunohistochemical analysis was confirmed by blocking experiments with the peptide used in the production of the antibody or an irrelevant peptide, as described previously,²⁵ and by identification using normal human gastric, duodenal, and pancreatic tissues. As observed previously in mice,^{18, 19} PDX1 expression was specifically detected in the pyloric glands of the stomach, the crypts and Brunner's glands of the duodenum, and the islet cells of the pancreas, and was not found in the normal corpus mucosae of the stomach (data not shown).

For evaluation of immunohistochemistry, sections with more than 10% of cells demonstrating positive reactivity were scored as positive.

Statistical analyses

Data were generally analysed by the χ^2 method. The relationship between PDX1 expression and age was calculated using the Mann-Whitney U test. We further studied correlations of the immunohistochemical results with various clinicopathological factors using logistic regression analysis. The statistical software package applied was Statview 5.0 for Macintosh (SAS Institute, Inc., Cary, North Carolina). A *p* value of <0.05 was considered statistically significant.

RESULTS

Immunohistochemical analyses of PDX1, MUC6, and MUC5AC expression in metaplasia

In order to detect pseudopyloric glands in the anatomical corpus, we analysed MUC6 and pepsinogen I expression.

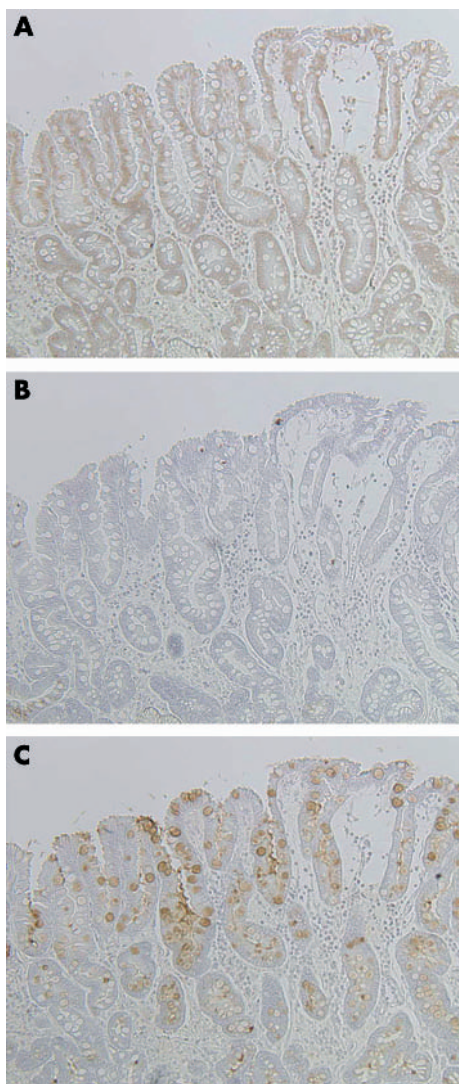


Figure 3 Expression patterns of pancreatic-duodenal homeobox 1 (PDX1) and the mucins MUC6 and MUC5AC in representative serial sections through intestinal metaplasia. (A) PDX1 positive reactivity is located in nuclei along the intestinalised epithelium. (B) No MUC6 expression is seen in intestinal metaplasia. (C) MUC5AC expression is evident in perinuclear portions of cells. Original magnification: 200 \times .

Coexpression of the two markers is a defining feature of pseudopyloric glands while normal pyloric glands express only MUC6.^{8, 28} MUC6 and pepsinogen I were evident in the perinuclear portions of pseudopyloric gland cells in the corpus in 46 of 95 primary gastric carcinoma cases (fig 2B, 2D). PDX1 was expressed in the nuclei of cells lining the pseudopyloric glands in nearly all samples (45/46, 97.8%) (fig 2A). Only seven cases (15.2%) demonstrated MUC5AC expression in pseudopyloric glands.

In intestinal metaplasia, PDX1 expression was found in the nuclei of goblet and columnar cells, and along the intestinalised epithelium (fig 3A). Expression of both MUC6 and MUC5AC (fig 3C) was detected in perinuclear areas of the cells. PDX1, MUC6, and MUC5AC positive reactivity was detected in 45 (97.8%), 13 (28.3%), and 41 (89.1%) patients, respectively, of 46 cases with intestinal metaplasia.

PDX1 expression in gastric carcinomas

We found PDX1 expression in the nuclei of gastric carcinoma cells in 72 (75.8%) of 95 gastric carcinomas (table 1, fig 4).

The frequency of PDX1 positive reactivity was higher in differentiated type carcinomas (39/43, 90.7%) than in undifferentiated type (33/52, 63.5%) ($p = 0.002$). T1 carcinomas (42/43, 97.7%) expressed the PDX1 protein more frequently than T2–4 carcinomas (30/52, 57.7%) ($p < 0.0001$). Furthermore, the occurrence of PDX1 positive reactivity in carcinomas without lymph node metastases (47/51, 92.2%) was higher than in those with metastases (25/44, 56.8%) ($p < 0.0001$) (table 1).

We further analysed correlation of PDX1 expression with reference to three clinicopathological factors by logistic regression analysis. Histological type and depth of invasion were significantly and independently associated with PDX1 expression in gastric carcinomas (histological type: odds ratio 0.233 (95% confidence interval (CI) 0.064–0.856), $p = 0.03$; depth of invasion: odds ratio 0.055 (95% CI 0.006–0.475), $p = 0.01$).

Correlation of PDX1 with MUC6 or MUC5AC expression in gastric carcinomas

MUC6 and MUC5AC expression was detected in 46 (48.4%) and 66 (69.5%) of 95 cases, respectively. MUC6 was more frequently detected in PDX1 positive (43/72, 59.7%) than in PDX1 negative (3/23, 13.0%) carcinomas ($p < 0.0001$), as was MUC5AC (56/72 (77.8%) PDX1 positive carcinomas v 10/23 (43.5%) PDX1 negative; $p = 0.002$). The differentiated type (28/43, 65.1%), T1 carcinomas (27/43, 62.8%), and carcinomas without lymph node metastases (30/51, 58.8%) expressed MUC6 protein more frequently than the undifferentiated type (18/52, 34.6%), T2–4 carcinomas (19/52, 36.5%), and metastasising carcinomas (16/44, 36.4%), respectively ($p = 0.003$, $p = 0.011$, $p = 0.029$). However, MUC5AC expression was not correlated with these pathological factors (data not shown).

To examine the characteristics of gastric carcinomas with pseudopyloric and pyloric gland phenotypes, we analysed the difference between double positive reactivity for PDX1 and MUC6 (PDX1+/MUC6+) and the other reactivity types, including PDX1 positive but MUC6 negative (PDX1+/MUC6–), MUC6 positive but PDX1 negative (PDX1–/MUC6+), and PDX1 and MUC6 double negative (PDX1–/MUC6–), for each pathological criterion (table 2, fig 5). PDX1+/MUC6+ was more frequently observed in the differentiated type (28/43, 65.1%) than in the undifferentiated type (15/52, 28.8%) ($p = 0.0004$). The frequency of PDX1+/MUC6+ was significantly higher in T1 carcinomas (27/43, 62.8%) than in T2–4 carcinomas (16/52, 30.7%) ($p = 0.0018$). PDX1+/MUC6+ was detected more often in carcinomas without metastases (29/51, 56.9%) than in carcinomas with metastases (14/44, 31.8%) ($p = 0.0145$). By logistic regression analysis, histological type and depth of invasion were significantly and independently correlated with PDX1+/MUC6+ in gastric carcinomas (table 3).

Double positive expression of PDX1 and MUC5AC (PDX1+/MUC5AC+) was correlated with depth of invasion and lymph node metastases but not with histological type (table 2). PDX1+/MUC5AC+ exhibited significant and independent association only with depth of invasion by logistic regression analysis (table 3, fig 5).

PDX1 and MUC6 expression in gastric carcinomas of the corpus and antrum

To confirm the association of pseudopyloric glands with gastric carcinomas, we examined the correlation between PDX1 expression or PDX1+/MUC6+ with sites of gastric carcinomas, such as the corpus, where PDX1 is not normally expressed. Gastric carcinomas in the corpus and antrum appeared in 39 and 21 of 95 cases, respectively. Twenty five and seven carcinomas were located across the junction of the

Table 1 Correlation of pancreatic-duodenal homeobox 1 (PDX1) expression with clinicopathological factors in gastric carcinomas

Clinicopathological factor	n	PDX1 expression		p Value
		Positive	Negative	
Age (y) (mean (SD))	95 (63.4 (10.7))	72 (63.3 (10.8))	23 (63.5 (10.5))	0.815*
Sex				
Male	69	50	19	0.218†
Female	26	22	4	
Histological type				
Differentiated	43	39	4	0.002†
Undifferentiated	52	33	19	
Depth of invasion				
T1	43	42	1	<0.0001†
T2–4	52	30	22	
Lymph node metastasis				
Absence	51	47	4	<0.0001†
Presence	44	25	19	

p values were analysed by the Mann-Whitney U test* and the χ^2 method†.

corpus-antrum and cardia-corpus, respectively. Gastric carcinomas in the anatomical cardia were observed in three cases. PDX1 was frequently expressed in carcinomas of the corpus (30/39, 76.9%) as well as antrum (17/21, 81.0%), which was not significantly different ($p = 0.718$). There was no significant difference in PDX1+/MUC6+ reactivity between the corpus (19/39, 48.7%) and antrum (13/21, 61.9%) ($p = 0.329$), suggesting that the pseudopyloric/pyloric gland phenotype may be related to carcinomas of not only the antrum but also the corpus.

DISCUSSION

To investigate the role of PDX1 in gastric carcinogenesis, we examined its expression pattern in comparison with that of mucins MUC6 and MUC5AC in the human stomach by immunohistochemistry. PDX1 positive cells were observed in pyloric glands in the antrum but not in the normal corpus mucosa, consistent with previous data for mice.¹⁹ We

demonstrated PDX1 expression in pseudopyloric glands of the human corpus for the first time and suggest that this transcription factor may be a regulatory protein that might contribute to their formation. G cells of the antrum are positive for PDX1,¹⁹ and forced PDX1 overexpression causes immature enterocytes to differentiate into gastrin producing cells.²⁹ G cells are also present in pseudopyloric glands after healing of erosions in the human corpus.³⁰ Furthermore, *Pdx1* deficient mice showed abnormal formation of the antrum.¹⁷ Taken together with the literature, our findings suggest that PDX1 plays an important role in the development of pseudopyloric glands.

We further demonstrated that double expression of PDX1 and MUC6 appeared in carcinomas of not only the antrum but also the corpus. Patterns of MUC6 expression were also consistent with those for PDX1 in Brunner's glands of the duodenum and pyloric glands of the stomach.^{17 18 28} These findings indicate that PDX1 and MUC6 expression, similar to

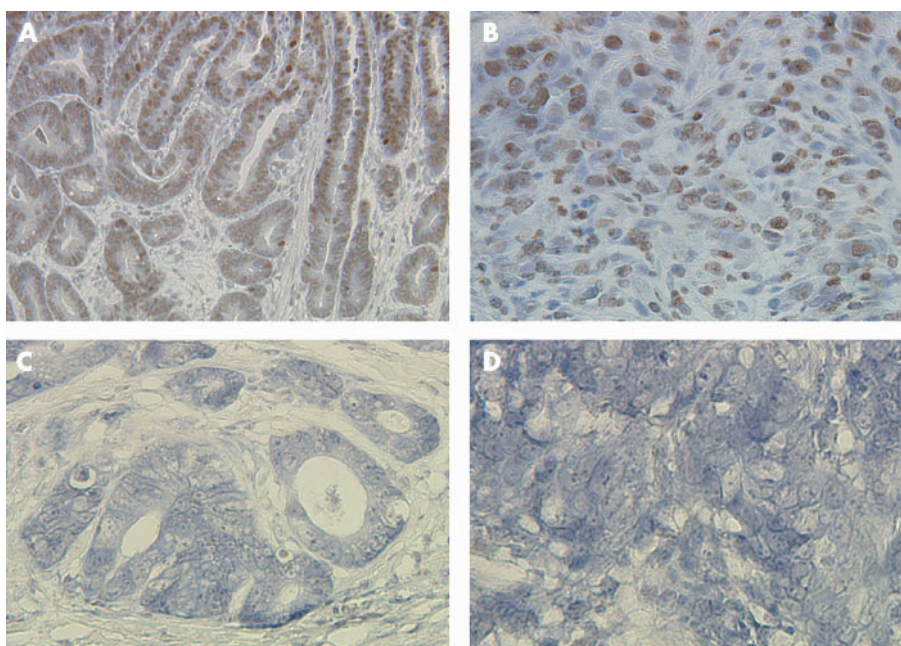


Figure 4 Pancreatic-duodenal homeobox 1 (PDX1) expression in gastric carcinomas by immunohistochemistry. (A, B) PDX1 positive reactivity is observed in differentiated and undifferentiated types of T1 carcinomas, respectively. (C, D) PDX1 is negative in differentiated and undifferentiated types of T2–4 carcinomas. Original magnification: A, 200 \times ; B–D, 400 \times .

Table 2 Correlation of pancreatic-duodenal homeobox 1 (PDX1) and mucin MUC6 or MUC5AC expression with clinicopathological factors in gastric carcinomas

Clinicopathological factor	n	PDX1 and MUC6				PDX1 and MUC5AC			
		PDX1+/MUC6+	PDX1+/MUC6-	PDX1-/MUC6+	PDX1-/MUC6-	PDX1+/MUC5AC+	PDX1+/MUC5A-	PDX1-/MUC5AC+	PDX1-/MUC5AC-
Histological type									
Differentiated	43	28	11	0	4	30	9	3	1
Undifferentiated	52	15	18	3	16	26	7	7	12
p value		0.0004*				0.0512†			
Depth of invasion									
T1	43	27	15	0	1	33	9	1	0
T2-4	52	16	14	3	19	23	7	9	13
p value		0.0018*				0.0013†			
Lymph node metastasis									
Absence	51	29	18	1	3	36	11	1	3
Presence	44	14	11	2	17	20	5	9	10
p value		0.0145*				0.0130†			

p value of PDX1 and MUC6* was analysed by the χ^2 method comparing PDX1+/MUC6+ with the other reactivity types (PDX1+/MUC6-, PDX1-/MUC6+, and PDX1-/MUC6-). PDX1+/MUC5AC+ was compared with the others (PDX1+/MUC5AC-, PDX1-/MUC5AC+, and PDX1-/MUC5AC-).†

pseudopyloric glands, is preserved in gastric carcinomas of the corpus. Rats undergoing Billroth II gastrectomy develop pseudopyloric glands and gastric neoplasms,³¹ and atrophic mucosa with gastric carcinomas was found as a continuous sheet of pseudopyloric glands, with or without foci of intestinal metaplasia, on mapping of resected stomachs.³² It is therefore conceivable that pseudopyloric glands, as well as

intestinal metaplasia, may be associated with gastric carcinogenesis.

Intestinal metaplasia slowly spreads from the antrum to the corpus.³³ Differentiated type minute carcinomas are frequently observed in the antrum,^{5,6} and several authors have argued that intestinal metaplasia may develop subsequent to formation of pseudopyloric glands in the

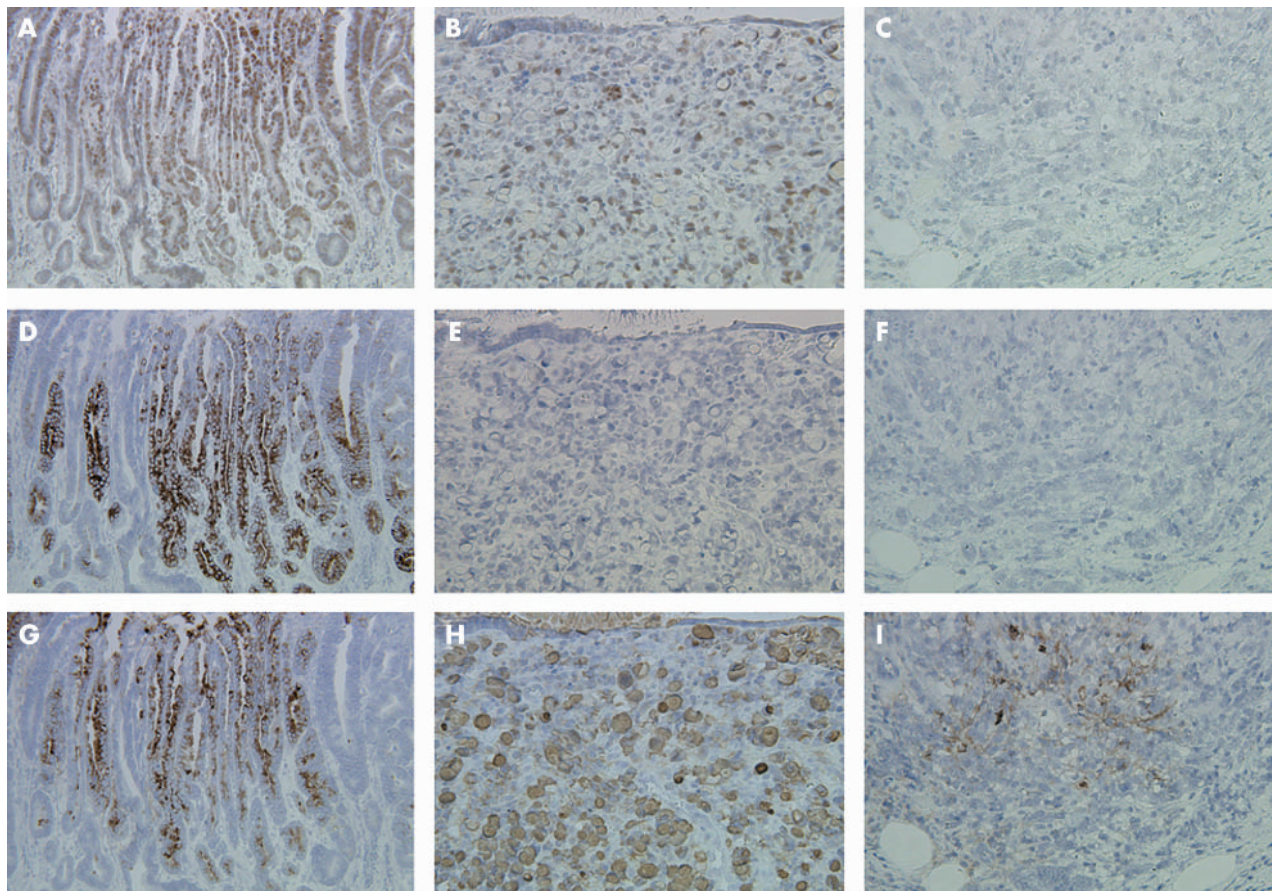


Figure 5 Comparison of pancreatic-duodenal homeobox 1 (PDX1) with mucin MUC6 and MUC5AC expression in serial sections through gastric carcinomas. (A, B) PDX1 expression is apparent in differentiated and undifferentiated type carcinomas, respectively. (C) PDX1 reactivity is not evident in undifferentiated type carcinoma. (D, G) MUC6 and MUC5AC expression is generally associated with PDX1 in differentiated type carcinoma. (E, F) MUC6 expression is not apparent in undifferentiated type carcinomas. (H, I) MUC5AC is expressed in undifferentiated type carcinomas. Original magnification: A, D, G, 200 \times ; B, C, E, F, H, I, 400 \times .

Table 3 Logistic regression analysis of pancreatic-duodenal homeobox 1 (PDX1) and mucin MUC6 or PDX1 and MUC5AC positive reactivity and clinicopathological factors in gastric carcinomas

Positive reactivity	Clinicopathological factor	Odds ratio	95% CI	p Value
PDX1 and MUC6	Histological type	0.249	0.099–0.627	0.003
	Depth of invasion	0.319	0.111–0.916	0.034
	Lymph node metastasis	0.886	0.302–2.601	0.825
PDX1 and MUC5AC	Depth of invasion	0.307	0.109–0.861	0.025
	Lymph node metastasis	0.631	0.232–1.716	0.367

corpus.^{10 34 35} Our data indicate that differentiated type gastric carcinomas revealed expression of PDX1 and MUC6 significantly higher than undifferentiated type. Thus intestinal metaplasia and differentiated type carcinomas may arise on the basis of pseudopyloric/pyloric glands.

We observed a significant association between PDX1 expression and depth of invasion in gastric carcinomas. Abate-Shen reviewed the two classes of homeobox genes¹¹ and noted that positive tumour modulators, such as Hox, that are normally expressed in proliferating tissues and down-regulated during differentiation, are often re-expressed in tumours. In contrast, negative tumour modulators, such as CDX2, that are expressed in differentiated tissues are often down-regulated in tumours. For example, CDX2 was expressed in the normal epithelium of the colon and intestinal metaplasia of the stomach, and down-regulated in colorectal and gastric carcinomas.^{12 36 37} In this study, another factor in the ParaHox gene family, PDX1, was expressed in differentiated tissues—that is, pseudopyloric/pyloric glands and intestinal metaplasia—with retention in early gastric carcinomas, but not in advanced lesions. Taken together with these findings, PDX1 could also be classified as a negative tumour modulator in the stomach. However, it is possible that PDX1 negative tumours tend to become advanced gastric carcinomas. Further studies are necessary to determine the role of PDX1 in gastric carcinogenesis.

In conclusion, we have presented evidence that PDX1 is expressed in pseudopyloric glands of the corpus, intestinal metaplasia, and gastric carcinomas, and that gastric carcinomas of the corpus retain pseudopyloric gland phenotypic expression. Our results suggest that PDX1 plays an important role in the development of pseudopyloric glands, and that this reflects a condition associated with gastric carcinogenesis.

ACKNOWLEDGEMENTS

This study was supported by a Grants-in-Aid for Scientific Research on Priority Areas from the Ministry of Education, Science, Sports, and Culture of Japan, and Research Fellowships of the Japan Society for the Promotion of Science for Young Scientists. We thank Drs H El-Zimaity and H Ota for advice regarding the experimental technique in this study, and Dr K H Kaestner for critical reading of the manuscript.

Authors' affiliations

H Sakai, X-L Li, Y Akiyama, S Miyake, Y Yuasa, Department of Molecular Oncology, Graduate School of Medicine and Dentistry, Tokyo Medical and Dental University, Tokyo, Japan

Y Eishi, M Koike, Department of Human Pathology, Graduate School of Medicine and Dentistry, Tokyo Medical and Dental University, Tokyo, Japan

T Takizawa, Department of Surgical Pathology, Graduate School of Medicine and Dentistry, Tokyo Medical and Dental University, Tokyo, Japan

N Konishi, Department of Pathology, Nara Medical University, Nara, Japan

M Tatematsu, Laboratory of Pathology, Aichi Cancer Centre Research Institute, Nagoya, Japan

REFERENCES

- Laurén P. The two histological main types of gastric carcinoma. *Acta Pathol Microbiol Scand* 1965;**64**:34–49.
- Fenoglio-Preiser C, Muñoz N, Carneiro F, et al. Gastric carcinoma. In: Hamilton SR, Aaltonen LA, eds. *World Health Organization classification of tumours. Pathology and genetics of tumours of the digestive system*. Lyon: IARC Press, 2000:39–52.
- Japanese Gastric Cancer Association. Japanese classification of gastric carcinoma. 2nd English edition. *Gastric Cancer* 1998;**1**:10–24.
- Lewin KJ, Appelman HD. *Carcinoma of the stomach. Atlas of tumor pathology, tumors of the esophagus and stomach*, 3rd edn. Washington DC: Armed Forces Institute of Pathology, 1995:245–330.
- Nakamura K, Sugano H, Takagi K. Carcinoma of the stomach in incipient phase: its histogenesis and histological appearances. *Gann* 1968;**59**:251–8.
- Mori M, Enjoji M, Sugimachi K. Histopathologic features of minute and small human gastric adenocarcinomas. *Arch Pathol Lab Med* 1989;**113**:926–31.
- Correa P. A human model of gastric carcinogenesis. *Cancer Res* 1988;**48**:3554–60.
- Dixon MF, Genta RM, Yardley JH, et al. Classification and grading of gastritis. The updated Sydney system. International Workshop on the Histopathology of Gastritis, Houston 1994. *Am J Surg Pathol* 1996;**20**:1161–81.
- Helpap B, Hattori T, Gedigk P. Repair of gastric ulcer. A cell kinetic study. *Virchows Arch A Pathol Anat Histol* 1981;**392**:159–70.
- Hattori T, Helpap B, Gedigk P. The morphology and cell kinetics of pseudopyloric glands. *Virchows Arch B Cell Pathol Incl Mol Pathol* 1982;**39**:31–40.
- Abate-Shen C. Deregulated homeobox gene expression in cancer: cause or consequence? *Nat Rev Cancer* 2002;**2**:777–85.
- Bai YQ, Yamamoto H, Akiyama Y, et al. Ectopic expression of homeodomain protein CDX2 in intestinal metaplasia and carcinomas of the stomach. *Cancer Lett* 2002;**176**:47–55.
- Brooke NM, Garcia-Fernandez J, Holland PW. The ParaHox gene cluster is an evolutionary sister of the Hox gene cluster. *Nature* 1998;**392**:920–2.
- Silberg DG, Swain GP, Suh ER, et al. Cdx1 and Cdx2 expression during intestinal development. *Gastroenterology* 2000;**119**:961–71.
- Silberg DG, Sullivan J, Kang E, et al. Cdx2 ectopic expression induces gastric intestinal metaplasia in transgenic mice. *Gastroenterology* 2002;**122**:689–96.
- Ohlsson H, Karlsson K, Edlund T. IPF1, a homeodomain-containing transactivator of the insulin gene. *EMBO J* 1993;**12**:4251–9.
- Offield MF, Jetton TL, Labosky PA, et al. PDX-1 is required for pancreatic outgrowth and differentiation of the rostral duodenum. *Development* 1996;**122**:983–95.
- Stoffers DA, Heller RS, Miller CP, et al. Developmental expression of the homeodomain protein IDX-1 in mice transgenic for an IDX-1 promoter/lacZ transcriptional reporter. *Endocrinology* 1999;**140**:5374–81.
- Larsson LI, Madsen OD, Serup P, et al. Pancreatic-duodenal homeobox 1 role in gastric endocrine patterning. *Mech Dev* 1996;**60**:175–84.
- Jonsson J, Carlsson L, Edlund T, et al. Insulin-promoter-factor 1 is required for pancreas development in mice. *Nature* 1994;**371**:606–9.
- Yuasa Y. Control of gut differentiation and intestinal-type gastric carcinogenesis. *Nat Rev Cancer* 2003;**3**:592–600.
- Schlemper RJ, Riddell RH, Kato Y, et al. The Vienna classification of gastrointestinal epithelial neoplasia. *Gut* 2000;**47**:251–5.
- Dixon MF. Gastrointestinal epithelial neoplasia: Vienna revisited. *Gut* 2002;**51**:130–1.
- Harlow E, Lane D. *Using antibodies—a laboratory manual*, 2nd edn. New York: Cold Spring Harbor, 1999.
- Silberg DG, Furth EE, Taylor JK, et al. CDX1 protein expression in normal, metaplastic, and neoplastic human alimentary tract epithelium. *Gastroenterology* 1997;**113**:478–86.
- Tatematsu M, Ichinose M, Miki K, et al. Gastric and intestinal phenotypic expression of human stomach cancers as revealed by pepsinogen immunohistochemistry and mucin histochemistry. *Acta Pathol Jpn* 1990;**40**:494–504.
- Konishi N, Matsumoto K, Hiasa Y, et al. Tissue and serum pepsinogen I and II in gastric cancer identified using immunohistochemistry and rapid ELISA. *J Clin Pathol* 1995;**48**:364–7.
- Bartman AE, Buisine MP, Aubert JP, et al. The MUC6 secretory mucin gene is expressed in a wide variety of epithelial tissues. *J Pathol* 1998;**186**:398–405.
- Yamada S, Kojima H, Fujimiyama M, et al. Differentiation of immature enterocytes into enteroendocrine cells by Pdx1 overexpression. *Am J Physiol Gastrointest Liver Physiol* 2001;**281**:G229–36.

- 30 **Fujimoto S**, Kimoto K, Inokuchi H, *et al*. G-cell population and serum gastrin response to cimetidine-OXO test meal in relation to histopathological alterations in resected stomachs from patients with peptic ulcer disease. *Gastroenterol Jpn* 1980;15:101-7.
- 31 **Miwa K**, Kamata T, Miyazaki I, *et al*. Kinetic changes and experimental carcinogenesis after Billroth I and II gastrectomy. *Br J Surg* 1993;80:893-6.
- 32 **El-Zimaity HM**, Ota H, Graham DY, *et al*. Patterns of gastric atrophy in intestinal type gastric carcinoma. *Cancer* 2002;94:1428-36.
- 33 **Sugano H**, Nakamura K, Kato Y. Pathological studies of human gastric cancer. *Acta Pathol Jpn* 1982;32:329-47.
- 34 **Tsutsumi Y**, Nagura H, Watanabe K, *et al*. A novel subtyping of intestinal metaplasia of the stomach, with special reference to the histochemical characterizations of endocrine cells. *Virchows Arch A Pathol Anat Histopathol* 1983;401:73-88.
- 35 **Inada K**, Nakanishi H, Fujimitsu Y, *et al*. Gastric and intestinal mixed and solely intestinal types of intestinal metaplasia in the human stomach. *Pathol Int* 1997;47:831-41.
- 36 **Ee HC**, Erlen T, Bhathal PS, *et al*. Cdx-2 homeodomain protein expression in human and rat colorectal adenoma and carcinoma. *Am J Pathol* 1995;147:586-92.
- 37 **Mallo GV**, Rechreche H, Frigerio JM, *et al*. Molecular cloning, sequencing and expression of the mRNA encoding human CDX1 and CDX2 homeobox. Down-regulation of Cdx1 and Cdx2 mRNA expression during colorectal carcinogenesis. *Int J Cancer* 1997;74:35-44.

GI SNAPSHOT.....

Menetrier disease

Question

A 31 year old man presented with nausea, epigastric discomfort, and weakness. He reported coffee ground emesis, melena, and had a history of iron deficiency anaemia of two years requiring oral iron supplementation and repeated blood transfusions. He had no other significant medical, surgical, or family history. Computed tomography scan of the abdomen revealed marked diffuse thickening of the gastric walls without any lymphadenopathy. Upper gastrointestinal endoscopy revealed giant folds with a polypoid appearance in the body and fundus of the stomach (fig 1). Mucosal biopsies of the fundus, body, and antrum were obtained. Stains for *Helicobacter pylori* were negative. The history and histological findings of this case are consistent with what disease?

See page 338 for answer

A Cardenas, C Kelly

Beth Israel Deaconess Medical Center, Harvard Medical School, Boston, Massachusetts 02215, USA

Correspondence to: Dr A Cardenas, Beth Israel Deaconess Medical Center, Harvard Medical School, 110 Francis St-Suite 8E, Boston, Massachusetts 02215, USA; acardena@bidmc.harvard.edu

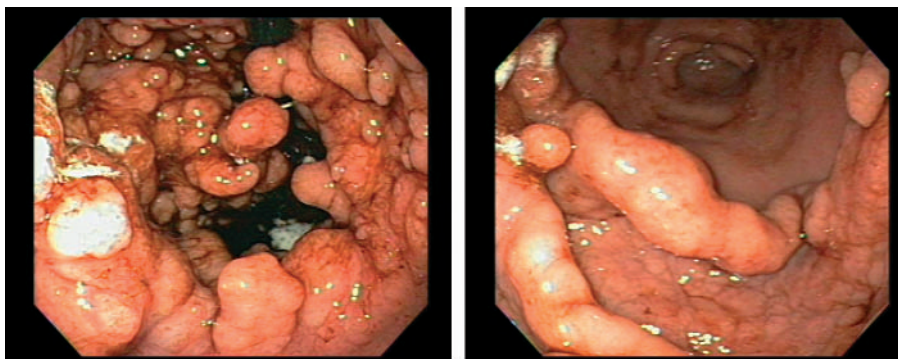


Figure 1 Upper gastrointestinal endoscopy of the stomach revealing giant folds with a polypoid appearance in the body and fundus.