

Anisakis simplex allergy: a murine model of anaphylaxis induced by parasitic proteins displays a mixed Th₁/Th₂ pattern

M. L. Baeza,* L. Conejero,*[†]
Y. Higaki,*[†] E. Martín,* C. Pérez,*
S. Infante,* M. Rubio* and
J. M. Zubeldia*

*Allergy Service and [†]Experimental Medicine Unit,
Hospital General Universitario Gregorio Marañón,
Madrid, Spain

Summary

The study of the singular hypersensitivity reactions to *Anisakis simplex* (*A.s*) proteins, may help us to understand many of the unknown immune interactions between helminths infections and allergy. We have developed a murine model of allergy to *A. simplex*, that mimics human *A. simplex* allergy to study the specific aspects of anaphylaxis induced by parasites. Male C3H/HeJ mice were intraperitoneally sensitized to *A. simplex*. Mice were then intravenous or orally challenged with *A. simplex*. Antigen-specific immunoglobulins, polyclonal IgE, anaphylactic symptoms, plasma histamine levels and cytokine profiles were determined. Comparative IgE immunoblot analyses were also performed. Specific IgE, IgG₁ and IgG_{2a} were detected in sensitized mice since week 3. Polyclonal IgE raised and peaked with different kinetics. Intravenous *A. simplex* challenge produced anaphylaxis in mice, accompanied by plasma histamine release. Oral *A. simplex* challenge in similarly sensitized mice did not caused symptoms nor histamine release. Numerous *A. simplex* allergens were recognized by sensitized mouse sera, some of them similar to human serum. The *A. simplex* stimulated splenocytes released IL-10, IFN- γ , IL-4, IL-13 and IL-5. We describe a new animal model of anaphylaxis. It exhibits characteristics of type I hypersensitivity reactions to *Anisakis simplex* similar to those observed in allergic humans. Different responses to i.v. or oral *A. simplex* challenges emerged, which did not reflect a window tolerization period. The cytokine profile developed (mixed Th₁/Th₂ pattern) differed from the observed in classical models of anaphylaxis or allergy to food antigens. This model may permit to investigate the peculiar allergic reactions to parasitic proteins.

Keywords: allergy to parasites, anaphylaxis, animal model, *Anisakis simplex*, helminths

Accepted for publication 14 September 2005

Correspondence: Maria Luisa Baeza, Servicio de Alergia, H.G.U. Gregorio Marañón, Dr Esquerdo 46, 28007 Madrid, Spain.
E-mail: lbaezao@seaic.es

Introduction

Epidemiological and immunological studies reported over the past decades have demonstrated complex interactions between allergy and helminth infections. The human immune system has evolved in the presence of intense helminth infections and has developed regulatory mechanisms to limit the harmful inflammation that can be caused by these potent allergens secreted by chronic pathogens [1]. This tolerization process induced by parasite antigens could consequently suppress allergic responses to common inhalant allergens. It has therefore been proposed that infections with helminths may protect from the development of allergic

diseases [2]. However, so far, epidemiological and experimental studies have yield conflicting results.

The protection from allergic diseases by parasitic proteins may operate through many different mechanisms. Helminth infections generate a polyclonal stimulus of IgE, which was first thought to mediate the parasite protection from allergic diseases. This IgE receptor-blocking theory was lately discarded in studies in Gabon, where confounders were included [3]. A helminth-induced modified Th₂ response with high titres of IgG₄ antibodies, have also been invoked to mediate this immune protection [4,5]. High titres of IgG₄ are present in asymptomatic helminth infections, and are able to inhibit IgE-mediated degranulation of effector cells [6].

Blocking IgG₄ levels, however, do not correlate with the lack of skin reactivity in the epidemiological studies [6]. Helminth-induced anti-inflammatory T regulatory cytokines may mediate allergy protection. IL-10 has been shown to inversely correlate with allergy. Decreased local levels of IL-10 have been reported in allergic individuals [7], and suppression of allergen-induced airway eosinophilia and reduction of eotaxin production by parasites infection is abolished in IL-10 deficient mice [8]. Furthermore, worm-modulated IL-10-producing B cells from IL-4 deficient mice, confer complete resistance to anaphylaxis when transferred to naïve mice [9]. In addition, innate CD25+CD4+ regulatory cells have been recently shown to contribute to Th₂ polarization during helminth infections by specifically suppression of Th₁ development by mature dendritic cells [10,11]. This regulatory network produced by a persistent immune challenge, would offer unifying explanations for the inverse association of parasitic infections and allergic diseases [12].

Paradoxically, allergic reactions have been described against these immunomodulatory parasitic allergens [13,14]. The morbidity and severity of helminth infections have been drastically reduced in westernized countries, but for many years little interest has been paid to clinical allergic responses to certain parasites, which are still prevalent in modernized countries. Human infection by *Anisakis simplex*, has become frequent nowadays due to the overall high rate of fish contamination and the new eating habits. This helminth infection has a strong impact in allergy [13,15–19]. In Spain, it has been estimated that *A. simplex* allergy may be more prevalent than any specific food allergy in the adult population [20] and compromises as much as 10% of the idiopathic anaphylaxis. In addition, a high rate (13%) of blood donors are sensitized to these larval proteins [21] as well as 50% of the fishmongers and the fishermen in Italy [22]. In the Madrid area, 23% of the patients attending to an allergy clinic are sensitized to *A. simplex* [18]. Curiously, only 20% of them develop allergic reactions.

Some *A. simplex* allergens are being identified [23–26]. Although many of them are thermostable and deep frying dose not fully eliminate them, most of the authors believe that the live larvae is needed to produce allergic reactions [27]. This is mainly based on different negative oral challenges performed in allergic patients with lyophilized larva [28], somatic [29] or excretion-secretion antigens [30] in sensitized patients, partly explained by their allergenic susceptibility to pepsin digestion. This sensitivity to pepsin may justify that many sensitized patients are safely eating frozen contaminated fish. Contrarily, other authors report reactions after eating well cooked fish in some of their patients [31].

There are specific clinical features which distinguish in *A. simplex* allergy from other allergies caused by common antigens in humans. *A. simplex* sensitization is not more frequent among the atopic population [18]. Secondly, many patients with high exposure to *A. simplex* larvae (big consumers of fish, living in highly fish contaminated areas), are

sensitized but do not refer clinical symptoms (subclinical sensitization). Third, the allergic patients develop symptoms only in very few occasions, and finally, only a small percentage of the patients who suffer gastric or intestinal anisakiasis, develop urticaria [32,33] as it is reported in large series of Japanese patients [34].

In previous research on *A. simplex* allergy it has not taken into account that parasite proteins are also immunomodulatory agents. Therefore the peculiarities of *A. simplex* allergy and the absence of response to *A. simplex* after specific oral challenges may have different explanations. After allergic reactions to *A. simplex* or after *A. simplex* infections, a sensitized patient may develop a prolonged determining immune modulation with the result of a tolerization period to further antigen challenges. Systemic challenges with *A. simplex* extracts, to mimic larval infections, and be able to answer this questions have not been performed in patients for ethical reasons.

We have generated a murine model with numerous similarities to the *A. simplex* allergic patients to better understand this peculiar allergy, as well as to explore specific immune responses following *A. simplex* sensitization.

Materials and methods

Mice and reagents

Sixty-two male, 6-week-old, C3H/HeJ mice were purchased from Charles River laboratories (Barcelona, Spain), and maintained under a 12-h light-dark cycle with free access to water and standard laboratory food. All mice were kept at the animal department of Experimental Medicine Unit of Hospital Gregorio Marañón (Madrid, Spain), which followed the European Regulations for Animal Experimentation (Directive: 86/609/EEC). The experiments were approved by the animal care committee of our institution.

A. simplex crude extract, regularly used for human skin testing (I.P.I. Diagnostics, Madrid, Spain), was used for the sensitization, challenge and ELISA experiments. This extract was produced, after thorough washings with sterile water, by homogenization of stage 3 larva followed by sonication and delipidation as elsewhere described [35]. The *A. simplex* extract was next biologically standardized and it is now in use in allergy clinics. It has been tested in fish allergic patients with negative responses. Pertussis toxin (PT) and Concanavalin A were purchased from Sigma-Aldrich Inc. (Missouri, USA).

Sensitization and challenge protocols

Different groups of mice received two, three or four weekly intraperitoneal (i.p) injections of *A. simplex* (100 µg), PT (300 ng) and alum (1 mg) in 200 µl of phosphate buffered saline (PBS) (Protocols A, B and C) (Fig. 1). Control mice received PT with alum or saline. Six weeks after the initial

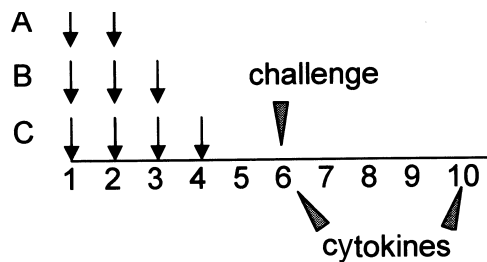


Fig. 1. Mice received two, three or four weekly intraperitoneal injections of *A. simplex* (100 µg), PT (300 ng) and alum (1 mg) in 200 µl of phosphate buffered saline (PBS) (Protocols A, B and C) (Fig. 1). Control mice received PT with alum or saline. Six weeks after the initial sensitization dose, a subset of mice was intravenously challenged with 200 µg of *A. simplex* in 50 µl of saline solution. A second group fasted overnight and was challenged with 2 mg of *A. simplex* by intragastric gavage. The mice were then observed for 2 h. Cytokines from stimulated splenocytes were measured on week 6 and 10.

sensitization dose, a subset of mice was intravenously (i.v.) challenged with 200 µg of *A. simplex* in 50 µl of saline solution. A second group fasted overnight and was challenged with 2 mg of *A. simplex* by intragastric gavage (i.g.). The mice were then observed for 2 h.

Antibody assays

Mice were weekly anaesthetized with inhaled isoflurane (Abbott, IL, USA) and bled from the retro-ocular plexus in order to measure *A. simplex* specific IgE (sIgE), IgG₁ and IgG_{2a}, as well as total IgE levels by ELISA. Briefly, for IgG₁ and IgG_{2a} 96-well plates were coated with 50 µl of 1.6 ng/ml of *A. simplex* in 0.2 M borate-buffered saline solution, pH 8.2 (BBS) overnight at 4 °C. Plates were then blocked with 1% BSA in PBS at 37 °C for 2 h, washed with BBS-0.05% Tween-20 (Sigma) and incubated with the standards and samples overnight at 4 °C. Alkaline phosphatase-linked anti-IgG₁ or G_{2a} (Southern Biotechnology Associates, Birmingham, USA) were added at 1 : 2000 dilutions, washed and then incubated with 2.63 mg/ml *p*-nitrophenyl phosphate (Boehringer Mannheim, GmbH, Germany). Absorbance at 405–650 nm was read at 1 and 18 h, respectively.

A. simplex specific serum IgE titres were also measured by ELISA. To remove antigen specific IgG, serum samples were previously incubated with protein-G sepharose beads according to manufacturer recommendations (Pharmacia, Uppsala, Sweden). Coated plates were saturated with 1% BSA in PBS. Protein G-adsorbed sera were added and incubated overnight at 4 °C. Plates were incubated with goat biotinylated anti-mouse IgE at 6 µg/ml (Becton Dickinson, PharMingen, San Diego, CA, USA), subsequently washed and incubated with horseradish peroxidase-linked streptavidin at 0.62 µg/ml (Zymed, San Francisco, CA, USA). TMB peroxidase was added (3,3',5,5'-tetramethyl benzidine, Kirkegaard and Perry Laboratories, Gaithersburg, MD,

USA). The reaction was stopped with phosphoric acid. Absorbance was read at 450–650. Sample concentrations in both assays were calculated by comparison with a standard curve on each plate using a Delta-SOFT II Pc (V 1.71.2, BioMetallics Inc (Princeton, USA). Results were expressed in units per milliliter on the basis of pooled high-titre standards obtained from a group of extensively sensitized mice, which were given arbitrary concentrations and expressed as U/ml. Total IgE levels were quantified in ng/ml using purified mouse IgE (PharMingen) for the standard curve and antimouse IgE monoclonal antibody to coat plates.

IgE immunoblot analyses

A. simplex allergenic proteins were determined by a 15% sodium dodecyl sulphate-polyacrylamide electrophoresis (SDS-PAGE) according to standard procedures as described elsewhere [30]. Blotted membranes were incubated with the pooled, IgG adsorbed, positive and negative mice sera. The membranes were incubated with goat biotinylated anti-mouse IgE at 1 µg/ml (PharMingen), subsequently washed and incubated with horseradish peroxidase-conjugated streptavidin. Finally, the membranes were incubated in chemiluminescent substrate (Supersignal® West Pico Chemiluminescent Substrate, Pierce®, Rockford, USA) for 5 min, and then were exposed to radiographic films. A similar procedure, with various reactive and dilution modifications was applied to perform a human *A. simplex* IgE immunoblotting as previously described [30].

Assessment of anaphylactic responses

Symptoms were evaluated by using a scoring system described by Li *et al.* [36]. 0: no symptoms; 1: scratching and rubbing around the nose and head; 2: puffiness around the eyes and mouth, diarrhea, pillar erecti, reduced activity and/or decreased activity with increased respiratory rate; 3: wheezing, laboured respiration, and cyanosis around the mouth and the tail; 4: no activity after prodding or tremor and convulsion; 5: death.

A subset of mice was bled 8 min after the i.v. challenge or 8 and 30 min after the i.g. challenges. Blood was collected into chilled tubes containing 7.5% potassium-EDTA. After centrifugation (900 g) for 10 min at 4 °C, plasma aliquots were frozen at –80 °C until use. Histamine levels were determined by using an enzyme immunoassay kit (ImmunoTECH Inc., Marseille, France), as recommended by the manufacturer. Blood for basal histamine values were collected 24 h before the challenge. The mice used to assess histamine release were not used in the final analyses of anaphylactic symptoms.

Splenocyte cytokine profiles

Mouse spleens were harvested 6 or 10 weeks after the first sensitization dose, teased to prepare single cell suspensions,

and resuspended in RPMI-1640 supplemented with 10% heat-inactivated FCS, 2 mmol/l glutamine, 0.05 mM 2-mercaptoethanol, and 1% penicillin-streptomycin (complete medium). Splenocytes were incubated at 5×10^5 cells per well in 96-well plates in a final volume of 250 μ l of complete medium with *A. simplex* or concavalin A added at 10 and 2.5 μ g/ml, respectively, or saline, at 37 °C in a 5% CO₂ atmosphere. Culture supernatants were collected at 72 h. Samples were tested for the presence of IL-4, IL-5, IFN- γ , IL-13 and IL-12 by using ELISA with capture and biotinylated detecting antibodies (Genzyme, Boston MA, USA and PharMingen). Washing, blocking, and detection steps were analogous to those used in the immunoglobulin E ELISA. A standard curve was generated by using known amounts of recombinant cytokines (PharMingen).

Statistical procedures

Data were analysed by using a Graph Pad Prism software V 3.06 (San Diego, USA). Anaphylactic scores and histamine

analyses were determined by ANOVA test. For comparison of immunoglobulin patterns Pearson correlation was applied. Differences with $P < 0.05$ were judged significant. All experiments were repeated at least twice.

Results

Production of *Anisakis simplex* specific immunoglobulins and polyclonal IgE

Mice receiving 3 i.p. doses of *A. simplex*, were bled weekly to investigate the profile of immunoglobulin production. They produced specific IgE (sIgE), IgG₁ (sIgG₁) and IgG_{2a} (sIgG_{2a}) by 3–4 weeks which peaked at week 8 (Fig. 2). Levels of sIgE significantly correlated to sIgG₁ ($r: 0.79, P < 0.0001$) and sIgG_{2a} ($r: 0.42, P < 0.032$). No specific immunoglobulin production was detected in the control groups during the 10 week-follow up period. Total IgE raised and peaked earlier with a different kinetics (Fig. 2). Total IgE levels did not correlate with specific immunoglobulins.

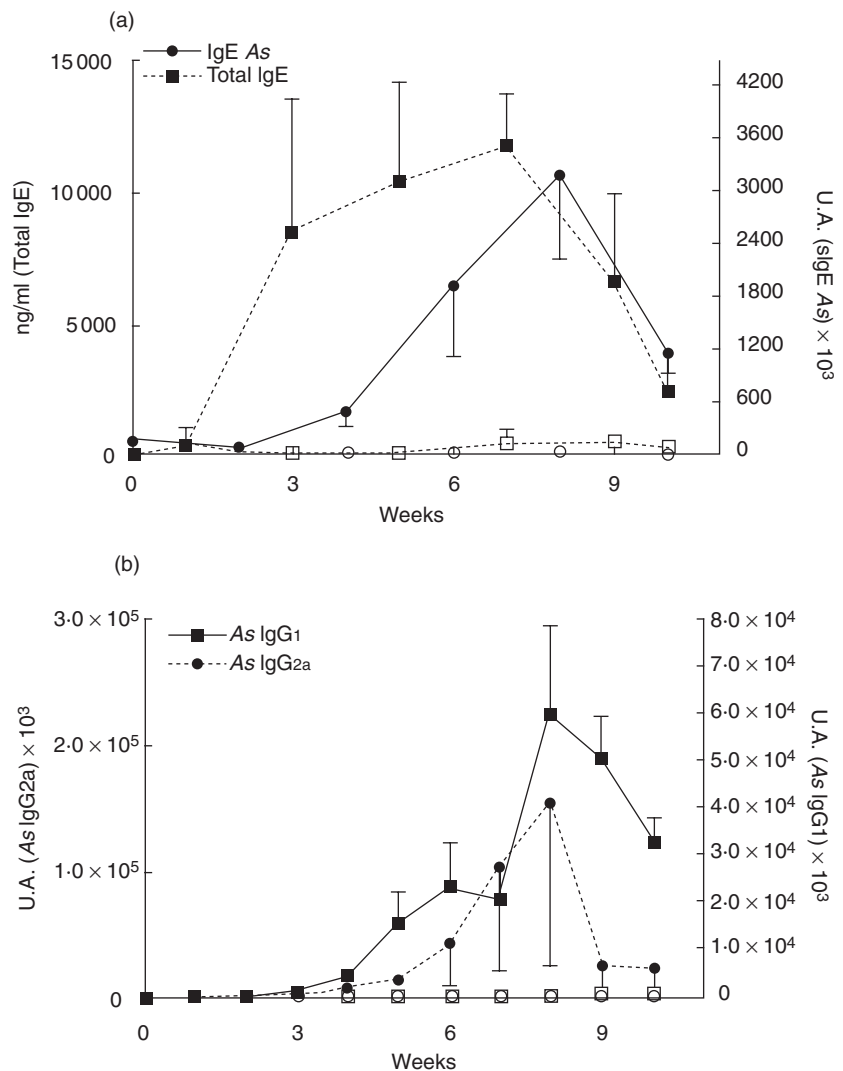


Fig. 2. (a) Serum levels of total IgE (□, ■) and specific IgE (○, ●) were measured in the sensitized group (■, ●) and the saline group (□, ○) for 10 weeks. (b) Serum levels of specific IgG₁ and IgG_{2a} in both groups. Results are expressed as the mean of 5 mice ± SEM.

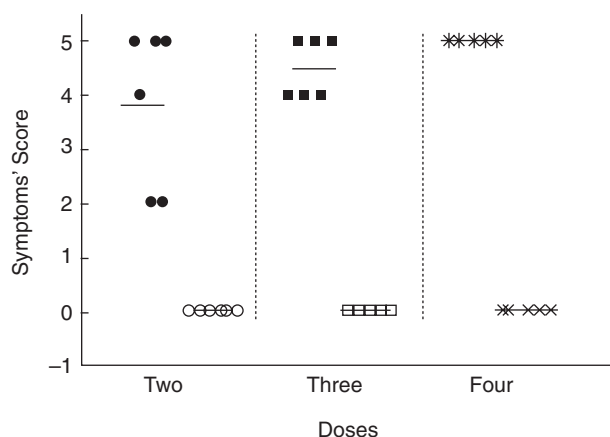


Fig. 3. Sensitized mice (●, ■, *) and control mice (○, □, ×) were intravenously challenged with 200 ng of *Anisakis simplex* extract. Post-challenge anaphylaxis symptoms' score in groups of 5–6 mice receiving 2, 3 or 4 sensitizing *Anisakis simplex* doses.

Systemic anaphylaxis after *Anisakis simplex* challenge

Six weeks after the initial sensitization dose, 5–6 mice in each group (protocols A, B and C), as well as the corresponding control groups, were i.v. challenged with 200 ng of *A. simplex* in 50 μ l of saline. Symptoms scores are plotted in Fig. 3. All mice receiving *A. simplex* during the sensitizing period had anaphylactic symptoms, and the mean symptoms' score increased with the number of sensitizing doses. Anaphylactic symptoms started between 3 and 11 min and lasted up to 30 min. In a previous experiment i.v. challenges with 100 ng of *A. simplex* produced clinical scores of 2–3 in sensitized mice (data not shown).

A group of mice following each protocol were i.g. challenged with 2 mg of antigen and were observed for two hours. No clinical symptoms were recorded. Intravenous and i.g. *A. simplex* challenges were negative in the adjuvant and the saline control mice.

Histamine release after *Anisakis simplex* challenge

Plasma histamine levels obtained 8 min after the i.v. challenge of the sensitized group, increased by 480% from basal values (Fig. 4). No plasma histamine variations were detected 8 min (data not shown) or 30 min after the sensitized group was challenged by i.g. *A. simplex* gavages (Fig. 4). Histamine levels from the control mice groups remained also unchanged. Mice used to assess histamine release were not used in the final analyses of anaphylactic symptoms.

Comparison of mouse to human allergenic pattern

A. simplex allergenic proteins to mouse were analysed by IgE immunoblot. Multiple IgE binding molecules were detected with a pooled serum from *A. simplex* sensitized mice (Fig. 5).

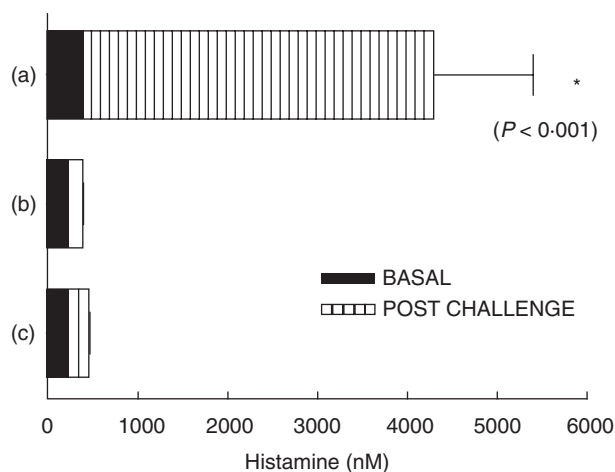


Fig. 4. Plasma histamine release after *Anisakis simplex* challenges. Hatched bars represent plasma histamine levels (mean of 5 mice \pm SEM) in sensitized mice (a) 8 min after iv *Anisakis simplex* challenge, (b) 30 min after oral challenge in the same group and (c) 8 min after i.v. *Anisakis simplex* challenge in the control mice. Close bars represent basal plasma histamine levels in each group (mean of 5 mice \pm SEM).

This pattern was compared to the allergenic proteins detected by an *A. simplex* allergic patient. Mouse specific IgE pattern had similarities with the one observed with human serum. Nevertheless, this immunoblot analyses only compares the molecular weight of the allergens recognized by a group of mice to the antigens detected by a unique allergic patient who was representative of a group of allergic subjects reacting to multiple allergens [30].

Production of Th₂ and Th₁ cytokine profiles after *A. simplex* sensitization

Cytokines from *A. simplex* stimulated splenocytes were measured the sixth and tenth weeks after the first immunizing

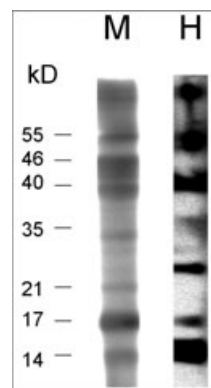


Fig. 5. *Anisakis simplex* IgE immunoblot. Comparison of mouse (M) and human (H) *Anisakis simplex* IgE binding molecules resolved by a 15% SDS-PAGE.

dose in mice following protocol B. Th₂ cytokines (IL-4, IL-5 and IL-13) were detected on week 6 and still were present 4 weeks later on mice sensitized with *A. simplex* (Fig. 6). Surprisingly, an important release was observed of IFN- γ in the absence of IL-12. Significant high levels of IL-10 were detected upon *A. simplex* activation. No cytokine release was detected from splenocytes derived from control mice. A non specific stimuli, concanavalin A, caused important release of IFN- γ , and in a lesser extend IL-10 from sensitized and naïve mice. IL-12, IL-13 and IL-5 but not IL-4 was exclusively released by splenocytes of sensitized mice upon the concanavalin A booster.

Discussion

The intimate relationship between allergic diseases and parasitic infections remains unresolved. We have generated a murine model of anaphylaxis after sensitization with

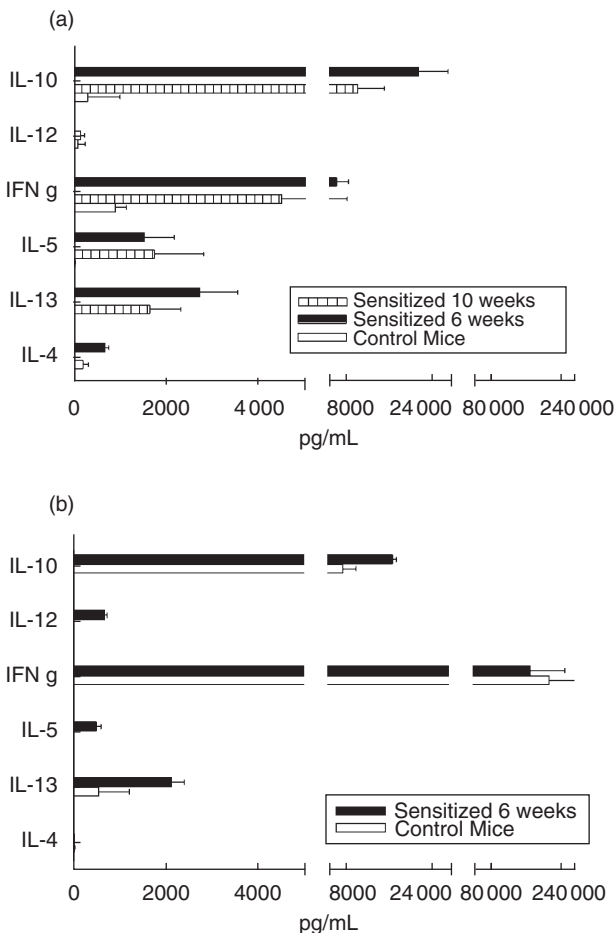


Fig. 6. Splenocyte cytokine profile. (a) Splenocytes from sensitized and control mice (\square) were stimulated by *Anisakis simplex* crude extract, on week 6 (\blacksquare) or 10 (\square). (b) A non specific stimulus (concanavalin A) was used to stimulate splenocytes from both groups on week 6: sensitized (\blacksquare) and control (\square). Supernatant cytokine levels are expressed as ng/ml (mean of 4 mice \pm SEM)

proteins of the larval parasite *Anisakis simplex*. This model exhibits characteristics of a type I hypersensitivity reaction, very similar to those observed in humans after *A. simplex* infection. After i.v. challenge, anaphylactic symptoms were apparent in 3–12 min and involved different organ systems. This challenge, which tried to mimic the larva gastric incursion through the mucosa, evoked symptoms in all sensitized mice and these were accompanied by an important histamine release. The three different protocols demonstrated a correlation between the number of sensitizing doses and the clinical score. In contrast, a much larger amount of antigen ($\times 10$), through the oral route, did not cause any symptoms in allergic mice, nor a histamine release.

The first consequence we learned from this new model is the fact that in mice, the unresponsiveness to oral *A. simplex* allergens, as it apparently happens in allergic patients, dose not depend on a systemic tolerization state. A distinct pattern of systemic immunoglobulins or cytokines between the two groups of allergic mice (immunized and challenged by the oral or the i.v. route) does not explain the different responses, as all mice were equally sensitized. On addition to the destroying effects of the activated gastric pepsin on *A. simplex* allergens [30], local immune responses by the gut-associated lymphoid tissue [37] for this lack of response may be present. Intestinal down-regulation of allergic responses driven by IL-10 by direct effects of both DC [11,38,39] or mast cells [40] as elsewhere suggested [41], may hamper the allergic response to oral allergens. This unresponsiveness to oral *A. simplex* antigens reinforce the need of a live larva to elicit most of the allergic reactions in man.

The two Th₂ immunoglobulins which have been related to anaphylaxis in mice, specific IgE and specific IgG₁, were strongly correlated in these mice, and lasted for more than 10 weeks. The IgE *A. simplex* specificity of mouse had similarities to the pattern described for some allergic human subjects. The specific IgG mice response to somatic and secreted *A. simplex* antigens was already characterized by other authors [42].

As expected, parasite proteins induced a polyclonal stimulation of IgE which followed a different kinetics than specific immunoglobulins. It is curious though, that the important release of the Th₁ specific immunoglobulin, IgG_{2a} was not able to block the allergic reaction. The adjuvants, alum hydroxide and pertussis toxin assigned to create this model were similar to other already described murine models for anaphylaxis [43]. They were important to enhance the allergic nature, but they did not impede the induction of the specific IgG_{2a} by the parasite allergens.

When interpreting the character of the immune response in this allergy model, the role of the adjuvants has to be taken into account. As in other allergy models which pursue the appearance of anaphylactic symptoms, the addition of adjuvants was necessary to record a clinical allergic response. Parallel experiments with *A. simplex* proteins or with larval infection on the absence of adjuvants generated a similar

specific immunoglobulin profile, but serum levels of this response were far below (data not shown). Some of the clinical and immunological features in this model are similar to other allergy murine models in which adjuvants were used [36,43–46]. But in this case, a different nature of the immune response was observed. The usual cytokine profile in food allergy models reveals a clear-cut Th₂ response with the prominence of IL-4, IL-13 and IL-5 and the absence of IFN- γ [43,44,46,47]. On the contrary, in the *A. simplex* model, cytokines reflected a balanced Th₁/Th₂ response. Indeed there was a production of IL-4 and IL-13 probably responsible for the B lymphocyte shift to IgE production and long-term of IgE-secreting B cells survival [48], and IL-5 surely implicated in the eosinophilic production and accumulation at the parasite locations demonstrated in human anisakiasis [49]. But at the same time there was an important release of IFN- γ , and IL-10 which were not able to avoid the allergic systemic reaction. A non specific stimuli (concanavalin A) caused a preferential release of IFN- γ and IL-10 with no distinction between allergic and naïve mice, with or without adjuvants.

Experiments run in the same strain of mice by Bashir *et al.* [41] revealed a clinical protection of peanut oral allergy by enteric heminth infections. The protection was suggested to be conducted by IL-10 which blocked allergen-specific IgE. In the case of allergy to *A. simplex*, IL-10 or IFN- γ did not block sIgE synthesis and did not prevent from allergic symptoms induced by the parasitic proteins.

There is a delicate balance between parasitic induction of protective regulatory effects and detrimental IL-4 allergic responses. Indeed, parasites are often long-lived and inhabit immunocompetent host for prolonged periods, and is not surprising that they posses modulatory molecules that ameliorate host responses to enhance their survival. The role of T reg cell in regulating allergen-specific Th₂ responses is still controversial, and it is even possible that, at least under certain conditions, these cells favour, rather than inhibit such type of responses [50].

In conclusion, we have generated a murine model of anaphylaxis to immunomodulatory *Anisakis simplex* proteins, which open new possibilities to study the human allergic reactions over parasite infections.

Acknowledgements

We want to thank I.P.I. Diagnostics, Madrid, Spain, for having provided us the *Anisakis simplex* extract and Dr Francisco del Cañizo for his help on the figure's design. This work has been funded by the Instituto de Salud Carlos III (Ministry of Health) Spain. Grant: FIS 02/1223.

References

- Cooper PJ. The potential impact of early exposures to geohelminth infections on the development of atopy. *Clin Rev Allergy Immunol* 2004; **26**:5.
- Masters S, Barrett-Connor E. Parasites and asthma predictive or protective? *Epidemiol Rev* 1985; **7**:49.
- Scriver S, Yemaneberhan H, Zebenigus M *et al.* Independent effects of intestinal parasite infection and domestic allergen exposure on risk of wheeze in Ethiopia: a nested case-control study. *Lancet* 2001; **358**:1493.
- Platts-Mills T, Vaughan J, Squillace S, Woodfolk J, Sporik R. Sensitisation, asthma, and a modified Th₂ response in children exposed to cat allergen: a population-based cross-sectional study. *Lancet* 2001; **357**:752.
- Rook GA, Ristori G, Salvetti M, Giovannoni G, Thompson EJ, Stanford JL. Bacterial vaccines for the treatment of multiple sclerosis and other autoimmune disorders. *Immunol Today* 2000; **21**:503.
- Hussain R, Poindexter RW, Ottesen EA. Control of allergic reactivity in human filariasis. Predominant localization of blocking antibody to the IgG₄ subclass. *J Immunol* 1992; **148**:2731.
- Borish L, Aarons A, Rumblyrt J, Cvietusa P, Negri J, Wenzel S. Interleukin-10 regulation in normal subjects and patients with asthma. *J Allergy Clin Immunol* 1996; **97**:1288.
- Wohlleben G, Trujillo C, Muller J, Ritze Y, Grunewald S, Tatsch U, Erb KJ. Helminth infection modulates the development of allergen-induced airway inflammation. *Int Immunol* 2004; **16**:585.
- Mangan NE, Fallon RE, Smith P, van Rooijen N, McKenzie AN, Fallon PG. Helminth infection protects mice from anaphylaxis via IL-10-producing B cells. *J Immunol* 2004; **173**:6346.
- McKee AS, Pearce EJ. CD25+CD4+ cells contribute to Th₂ polarization during helminth infection by suppressing Th₁ response development. *J Immunol* 2004; **173**:1224.
- Oldenhove G, de Heusch M, Urbain-Vansanten G, Urbain J, Maliszewski C, Leo O, Moser M. CD4+ CD25+ regulatory T cells control T helper cell type 1 responses to foreign antigens induced by mature dendritic cells in vivo. *J Exp Med* 2003; **198**:259.
- Yazdanbakhsh M, Kreamsner PG, van Ree R. Allergy, parasites, and the hygiene hypothesis. *Science* 2002; **296**:490.
- Kasuya S, Hamano H, Izumi S. Mackerel-induced urticaria and *Anisakis*. *Lancet* 1990; **335**:665.
- Matheu V, Gracia Bara MT, Rodríguez V, Olalde S, Baeza ML. Shock anafilático secundario a rotura espontánea de quiste hidatídico esplénico. *Rev Esp Alergol Inmunol Clin* 1997; **12**:242.
- Audicana MT, Fernández de Corres L, Muñoz D, Fernández E, Navarro JA, del Pozo MD. Recurrent anaphylaxis caused by *Anisakis simplex* parasitizing fish. *J Allergy Clin Immunol* 1995; **96**:558.
- Mendizabal-Basagoiti L. Hypersensitivity to *Anisakis simplex*: apropos of 36 cases. *Allerg Immunol (Paris)* 1999; **31**:15.
- Gracia-Bara MT, Matheu V, Zubeldia JM *et al.* *Anisakis simplex*-sensitized patients: should fish be excluded from their diet? *Ann Allergy Asthma Immunol* 2001; **86**:679.
- López Sáez MP, Zubeldia JM, Matheu V *et al.* Sensibilización a *Anisakis simplex*: prevalencia en una consulta de alergia hospitalaria de Madrid. *Rev Esp Alergol Inmunol Clin* 1999; **14**:23.
- Montoro A, Perteguer MJ, Chivato T, Laguna R, Cuéllar C. Recidivous acute urticaria caused by *Anisakis simplex*. *Allergy* 1997; **52**:985.
- Fernández de Corres L, Audicana M, Del Pozo MD, Muñoz D, Fernández E, Navarro JA, García M, Díez J. *Anisakis simplex* induces not only anisakiasis. report on 28 cases of allergy caused by this nematode. *J Invest Allergol Clin Immunol* 1996; **6**:315.

- 21 Del Pozo MD, Audicana M, Díez JM *et al.* *Anisakis simplex*, a relevant etiologic factor in acute urticaria. *Allergy* 1997; **52**:576.
- 22 Purello D'Ambrosio F, Pastorello E, Gangemi S, Lombardo G, Ricciardi L, Fogliani O, Merendino RA. Incidence of sensitivity to *Anisakis simplex* in a risk population of fishermen/fishmongers. *Ann Allergy Asthma Immunol* 2000; **84**:439.
- 23 Caballero ML, Moneo I. Specific IgE determination to *Anisakis simplex*, a major allergen from *Anisakis simplex*, is a useful tool for diagnosis. *Ann Allergy Asthma Immunol* 2002; **89**:74.
- 24 Shimakura K, Miura H, Ikeda K, Ishizaki S, Nagashima Y, Shirai T, Kasuya S, Shiomi K. Purification and molecular cloning of a major allergen from *Anisakis simplex*. *Mol Biochem Parasitol* 2004; **135**:69.
- 25 Pérez-Pérez J, Fernández-Caldas E, Marañón F, Sastre J, Bernal ML, Rodríguez J, Bedate CA. Molecular cloning of paramyosin, a new allergen of *Anisakis simplex*. *Int Arch Allergy Immunol* 2000; **123**:120.
- 26 Moneo I, Caballero ML, González-Muñoz M, Rodríguez-Mahillo AI, Rodríguez-Pérez R, Silva A. Isolation of a heat-resistant allergen from the fish parasite *Anisakis simplex*. *Parasitol Res* 2005; **96**:285.
- 27 Alonso-Gómez A, Moreno-Ancillo A, López-Serrano MC, Suárez de Parga JM, Daschner A, Caballero MT, Barranco P, Cabañas R. *Anisakis simplex* only provokes allergic symptoms when the worm parasitises the gastrointestinal tract. *Parasitol Res* 2004; **93**:378.
- 28 Daschner A, Alonso GA, Cabañas R, Suárez de Parga JM, López Serrano MC. Gastroallergic anisakiasis. borderline between food allergy and parasitic disease—clinical and allergologic evaluation of 20 patients with confirmed acute parasitism by *Anisakis simplex*. *J Allergy Clin Immunol* 2000; **105**:176.
- 29 Sastre J, Lluch-Bernal M, Quirce S, Arrieta I, Lahoz C, Del Amo A, Fernández-Caldas E, Marañón F. A double-blind, placebo-controlled oral challenge study with lyophilized larvae and antigen of the fish parasite, *Anisakis simplex*. *Allergy* 2000; **55**:560.
- 30 Baeza ML, Rodríguez A, Matheu V *et al.* Characterization of allergens secreted by *Anisakis simplex* parasite: clinical relevance in comparison with somatic allergens. *Clin Exp Allergy* 2004; **34**:296.
- 31 Audicana MT, Ansótegui JJ, Fernández de Corres LF, Kennedy MW. *Anisakis simplex*: dangerous – dead and alive? *Trends Parasitol* 2002; **18**:20.
- 32 Cocheton JJ, Cabou I, Lecomte I. Anisakiasis and *Anisakis* infections. *Ann Med Interne (Paris)* 1991; **142**:121.
- 33 Sugimachi K, Inokuchi K, Ooiwa T, Fujino T, Ishii Y. Acute gastric anisakiasis. Analysis of 178 cases. *J Am Med Assoc* 1985; **253**:1012.
- 34 Sun SZ, Koyama T, Kagei N. Anisakidae larvae found in marine fishes and squids from the Gulf of Tongking, the East China Sea and the Yellow Sea. *Jpn J Med Sci Biol* 1991; **44**:99.
- 35 Rodero M, González ML, Esteban MI, Cuéllar C. Estandarización biológica del extracto de *Anisakis simplex*. *Alergol Inmunol Clin* 2000; **15**:000–000.
- 36 Li XM, Schofield BH, Huang CK, Kleiner GI, Sampson HA. A murine model of IgE-mediated cow's milk hypersensitivity. *J Allergy Clin Immunol* 1999; **103**:206.
- 37 Matricardi PM, Rosmini F, Riondino S, Fortini M, Ferrigno L, Rapicetta M, Bonini S. Exposure to foodborne and orofecal microbes versus airborne viruses in relation to atopy and allergic asthma: epidemiological study. *Brit Med J* 2000; **320**:412.
- 38 Bellinghausen I, Brand U, Steinbrink K, Enk AH, Knop J, Saloga J. Inhibition of human allergic T-cell responses by IL-10-treated dendritic cells: differences from hydrocortisone-treated dendritic cells. *J Allergy Clin Immunol* 2001; **108**:242.
- 39 Corinti S, Albanesi C, la Sala A, Pastore S, Girolomoni G. Regulatory activity of autocrine IL-10 on dendritic cell functions. *J Immunol* 2001; **166**:4312.
- 40 Royer B, Varadaradjalou S, Saas P, Guillosson JJ, Kantelip JP, Arock M. Inhibition of IgE-induced activation of human mast cells by IL-10. *Clin Exp Allergy* 2001; **31**:694.
- 41 Bashir ME, Andersen P, Fuss IJ, Shi HN, Nagler-Anderson C. An enteric helminth infection protects against an allergic response to dietary antigen. *J Immunol* 2002; **169**:3284.
- 42 Kennedy MW, Tierney JYeP, McMonagle FA, McIntosh A, McLaughlin D, Smith JW. The secreted and somatic antigens of the third stage larva of *Anisakis simplex*, and antigenic relationship with *Ascaris suum*, *Ascaris lumbricoides*, and *Toxocara canis*. *Mol Biochem Parasitol* 1988; **31**:35.
- 43 Horner AA, Nguyen MD, Ronaghy A, Cinman N, Verbeek S, Raz E. DNA-based vaccination reduces the risk of lethal anaphylactic hypersensitivity in mice. *J Allergy Clin Immunol* 2000; **106**:349.
- 44 Li XM, Serebrisky D, Lee SY *et al.* A murine model of peanut anaphylaxis: T- and B-cell responses to a major peanut allergen mimic human responses. *J Allergy Clin Immunol* 2000; **106**:150.
- 45 Li XM, Zhang TF, Huang CK, Srivastava K, Teper AA, Zhang L, Schofield BH, Sampson HA. Food Allergy Herbal Formula-1 (FAHF-1) blocks peanut-induced anaphylaxis in a murine model. *J Allergy Clin Immunol* 2001; **108**:639.
- 46 Srivastava KD, Kattan JD, Zou ZM *et al.* The Chinese herbal medicine formula FAHF-2 completely blocks anaphylactic reactions in a murine model of peanut allergy. *J Allergy Clin Immunol* 2005; **115**:171.
- 47 Morafo V, Srivastava K, Huang CK, Kleiner G, Lee SY, Sampson HA, Li AM. Genetic susceptibility to food allergy is linked to differential TH2-TH1 responses in C3H/HeJ and BALB/c mice. *J Allergy Clin Immunol* 2003; **111**:1122.
- 48 Hajoui O, Janani R, Tulic M, Joubert P, Ronis T, Hamid Q, Zheng H, Mazer BD. Synthesis of IL-13 by human B lymphocytes: regulation and role in IgE production. *J Allergy Clin Immunol* 2004; **114**:657.
- 49 del Pozo V, Arrieta I, Tuñón T *et al.* Immunopathogenesis of human gastrointestinal infection by *Anisakis simplex*. *J Allergy Clin Immunol* 1999; **104**:637.
- 50 Romagnani S. Immunologic influences on allergy and the TH1/TH2 balance. *J Allergy Clin Immunol* 2004; **113**:395.