

AUTHOR'S CORRECTION

Unique Features of a Highly Pathogenic *Campylobacter jejuni* Strain

Dirk Hofreuter, Jennifer Tsai, Robert O. Watson, Veronica Novik, Bill Altman,
 Michelle Benitez, Christina Clark, Clotilde Perbost, Thomas Jarvie,
 Lei Du, and Jorge E. Galán

*Section of Microbial Pathogenesis, School of Medicine, Yale University, New Haven, Connecticut 06536,
 and 454 Life Sciences, Branford, Connecticut 06405*

Volume 74, no. 8, p. 4694–4707, 2006, Page 4695–4702: In the published article, we failed to indicate that the format of Fig. 2 through 7 and S1 through S6 was derived from Fonts et al. (16).

Page 4697, Figure 3: An error was made in the order of the aligned sequences. The figure should appear as shown below.

Page 4700, Figure 5: The homologs of the NCTC 11168 genes Cj0560 and Cj0570 should have been shown as pseudogenes in RM1221.

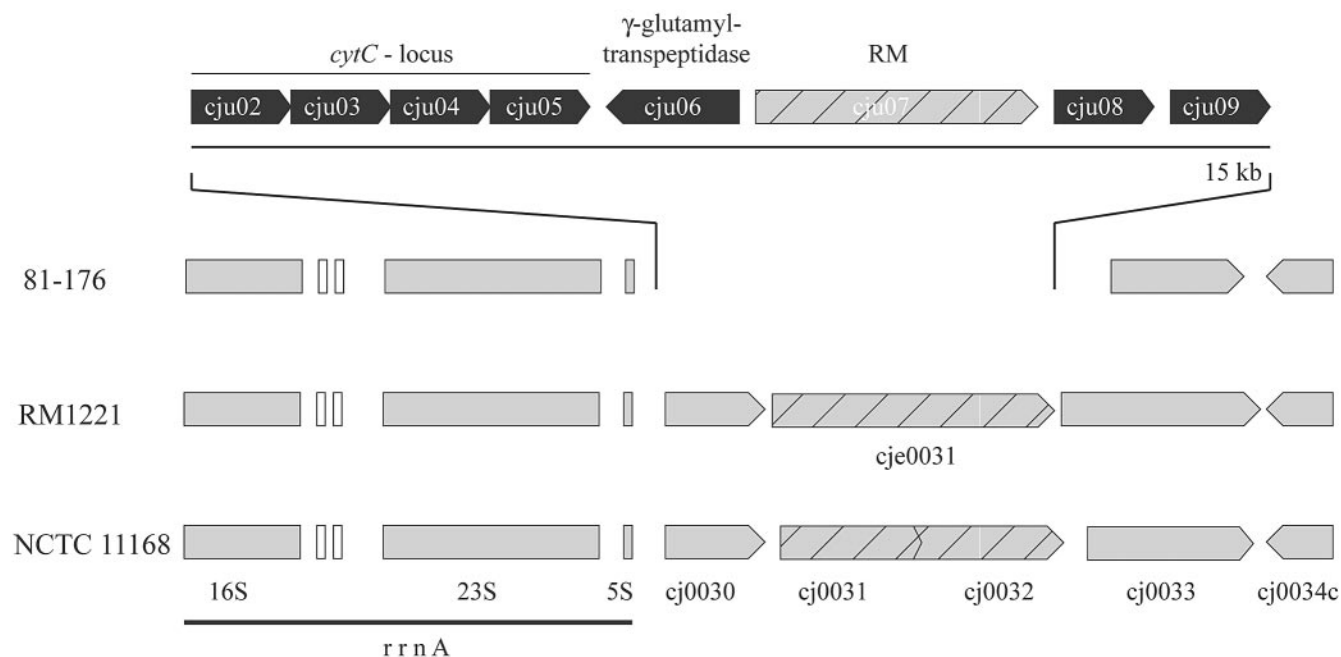


FIG. 3.