

A noncoding RNA in *Saccharomyces cerevisiae* is an RNase P substrate

LI YANG¹ and SIDNEY ALTMAN

Department of Molecular, Cellular and Developmental Biology, Yale University, New Haven, Connecticut 06511, USA

ABSTRACT

Ribonuclease P (RNase P) is involved in regulation of noncoding RNA (ncRNA) expression in *Saccharomyces cerevisiae*. A hidden-in-reading-frame antisense-1 (HRA1) RNA in *S. cerevisiae*, which belongs to a class of ncRNAs located in the antisense strand to verified protein coding regions, was cloned for further use in RNase P assays. *Escherichia coli* RNase P assays in vitro of HRA1 RNA show two cleavage sites, one major and one minor in terms of rates. The same result was observed with a partially purified *S. cerevisiae* RNase P activity, both at 30°C and 37°C. These latter cells are normally grown at 30°C. Predictions of the secondary structure of HRA1 RNA in silico show the cleavage sites are canonical RNase P recognition sites. A relatively small amount of endogenous HRA1 RNA was identified by RT-PCR in yeast cells. The endogenous HRA1 RNA is increased in amount in strains that are deficient in RNase P activity. A deletion of 10 nucleotides in the *HRA1* gene that does not overlap with the gene coding for a protein (*DRS2*) in the sense strand shows no defective growth in galactose or glucose. These data indicate that HRA1 RNA is a substrate for RNase P and does not appear as a direct consequence of separate regulatory effects of the enzyme on ncRNAs.

Keywords: endogenous RNA; RNase P cleavage; deletions

INTRODUCTION

RNase P activity has been identified in all three kingdoms of life: Archaea, Bacteria, and Eukarya, as well as in cellular organelles (mitochondria and chloroplasts) that synthesize tRNAs (Gopalan et al. 2002; Hartmann and Hartmann 2003). The enzyme removes 5'-leader sequences from precursor tRNAs by a single magnesium-dependent endonucleolytic cleavage. Homologs of the RNase P RNA gene have been annotated in many microbial genomes (Li and Altman 2004; Yang et al. 2005). Besides its involvement in tRNA maturation (Chamberlain et al. 1996; Gopalan et al. 2002; Xiao et al. 2002), RNase P cleaves some regulatory riboswitches in *Escherichia coli* (Mandal et al. 2004; Altman et al. 2005). RNase P substrates were also found in *E. coli* operons in noncoding intergenic regions (Li and Altman

2003), indicating that RNase P activity might play other important, regulatory role(s).

Recently, Samanta et al. (2006) successfully employed high-density genome tiling microarrays to check global *Saccharomyces cerevisiae* gene expression by depleting crucial RNase P enzyme activity in the host cells that were assayed. Many previously undescribed RNAs were identified in this way (Samanta et al. 2006). A group of ncRNAs was found in the antisense strand of genomic sequence to known protein-coding regions and was defined as hiding in reading-frame antisense (HRA) RNA. Although identified as possible RNase P substrate candidates by microarray analysis, the cleavage of those HRA RNAs by RNase P required further validation in vivo and in vitro. It is also necessary to show that HRA1 RNA is not found because of a peculiar regulatory effect of the loss of RNase P activity.

The *HRA1* gene is located in the antisense strand of the *DRS2* gene in *S. cerevisiae* chromosome 1 and partially overlaps with the *DRS2* open reading frame (ORF). *DRS2* encodes a Golgi membrane-located transport protein (Christie et al. 2004) that is involved in 18S rRNA maturation (Ripmaster et al. 1993). We cloned the *HRA1* gene and found it was indeed a substrate for various RNase P enzymes in vitro. The amount of HRA1 RNA in yeast

¹Present address: Department of Genetics and Developmental Biology, University of Connecticut Health Center, Farmington, CT 06030-3301, USA.

Reprint requests to: Sidney Altman, Department of Molecular, Cellular and Developmental Biology, Yale University, New Haven, CT 06511, USA; e-mail: sidney.altman@yale.edu; fax: (203) 432-5713.

Article published online ahead of print. Article and publication date are at <http://www.rnajournal.org/cgi/doi/10.1261/rna.460607>.

cells was determined by RT-PCR but could not be detected by a Northern blot. The endogenous HRA1 RNA increased about 2.5-fold in an RNase P depletion yeast strain. This result confirms the results of Samanta et al. (2006) that HRA1 is an RNase P substrate.

RESULTS

Alignment of the HRA1 gene in the *S. cerevisiae* genome

A set of noncoding RNAs in *S. cerevisiae* with a deletion of RNase P activity was identified with tiling microarrays in the antisense strand of known protein-coding regions and defined as hidden-in-reading-frame antisense RNA (Samanta et al. 2006). This report focuses on HRA1 RNA.

As shown in Figure 1A, the cloned HRA1 gene was located in yeast chromosome 1 from 99,306 to 99,869 (564 nucleotides [nt]) and partially overlapped from 99,306 to 99,698 (393 nt) with the sense strand DRS2 gene (YAL026C, from 99,698 to 95,631 nt; Christie et al. 2004). The upstream sense strand MAK16 gene (YAL025C) runs from 101,146 to 100,226 nt. The HRA1 gene (564 base pairs [bp]) from *S. cerevisiae* was amplified under the control of T7 promoter and inserted into a pUC19 vector to generate the pUC19-HRA1-3 plasmid (see Materials and Methods). Sequencing analysis of the cloned HRA1 gene shows 99% homology with *S. cerevisiae* strain S288C chromosome 1 sequence by BLAST2 (available at <http://seq.yeastgenome.org/cgi-bin/nph-blast2sgd>) and the overlapped sequence with the DRS2 gene is shown in bold letters (Fig. 1B). HRA1 RNA was tested as a substrate for RNase P.

Cleavage analysis of yeast HRA1 RNA

S. cerevisiae HRA1 RNA was transcribed by T7 RNA polymerase from linearized pUC19-HRA1-3 plasmid, as shown in Figure 2A. Both the internal and 5'-end-labeled HRA1 RNA substrates (Materials and Methods) were then employed for RNase P cleavage assays in vitro. The catalytic *E. coli* M1 RNA (Fig. 2B,C, lane 2), reconstituted *E. coli* RNase P holoenzymes in vitro (Fig. 2B,C, lane 3), or partially purified yeast RNase P holoenzyme (Fig. 2B,C,

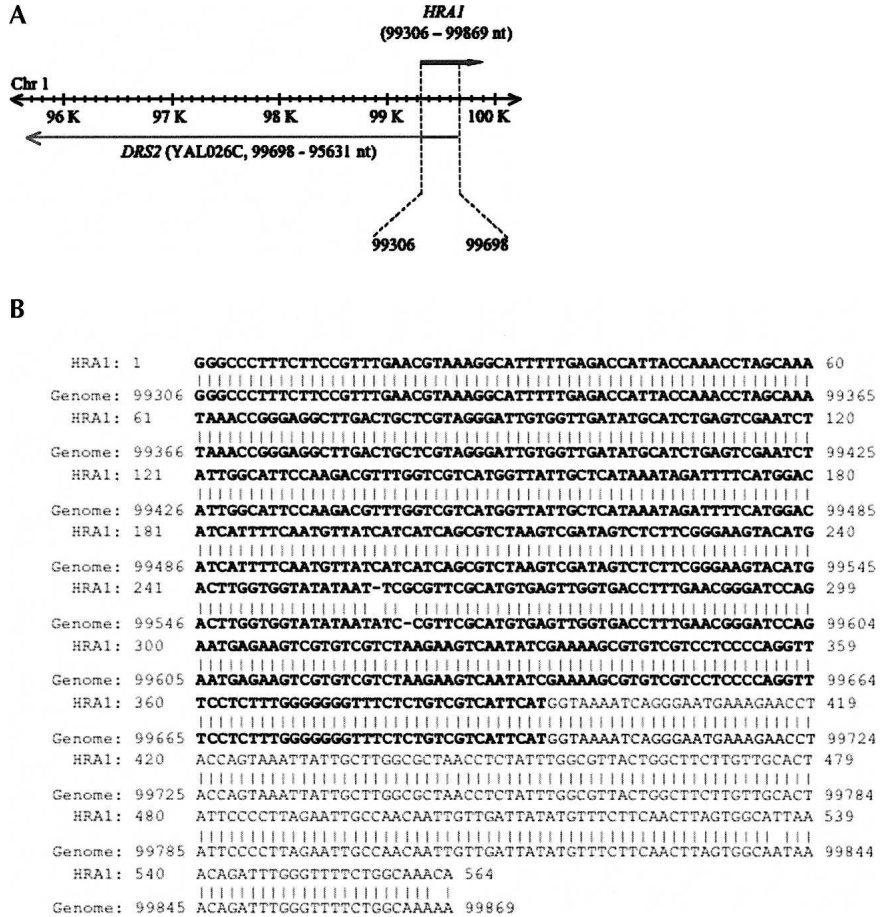


FIGURE 1. The HRA1 gene in *S. cerevisiae* Chromosome 1. (A) A cloned HRA1 gene is located in yeast chromosome I from 99,306 to 99,869 in the antisense strand of a known coding region of DRS2 (YAL026C). The upstream sense strand MAK16 (YAL025C) runs from 101,146 to 100,226 nt. (B) A yeast HRA1 gene was amplified directly from intact yeast cells by using primer oligonucleotides HRA1F3 (5'-TAATACGACTCACTATAGGCCCTTCTTCCGT TTGAA-3') with T7 promoter sequence (in italics) and HRA1R3 (5'-CATATGTTTGCCA GAAAACCCAAATC-3') with the NdeI site (underlined). The overlapped sequence with the DRS2 gene is shown in bold letters. The sequence of the cloned HRA1 gene was used for WU-BLAST2 analysis with *S. cerevisiae* genomic sequence (<http://seq.yeastgenome.org/cgi-bin/nph-blast2sgd>) and shows 99% homology with the yeast genomic sequence.

lane 4) could cleave HRA1 RNA, but at different sites for the various sources of the enzyme (Fig. 2B,C, cf. lane 4 and lanes 2,3).

After cleavage by yeast RNase P holoenzyme at 37°C, both internal (Fig. 2B, lane 4) and 5'-end-labeled (Fig. 2C, lane 4) HRA1 RNA showed two main cleavage sites. Semi-logarithmic analysis of band mobilities in the gel (data not shown) was consistent with one cleavage in HRA1 RNA that yielded product bands I and IV and another cleavage that produced bands II and III (Fig. 2B, lane 4). No bands except the ones noted were found (Fig. 2C, lane 4), an indication that the cleavages were independent of each other. Notably, the cleavage efficiency of the yeast RNase P holoenzyme on HRA1 RNA is much lower than that on the precursor tRNA substrates (>95% in 10 min at 37°C; data

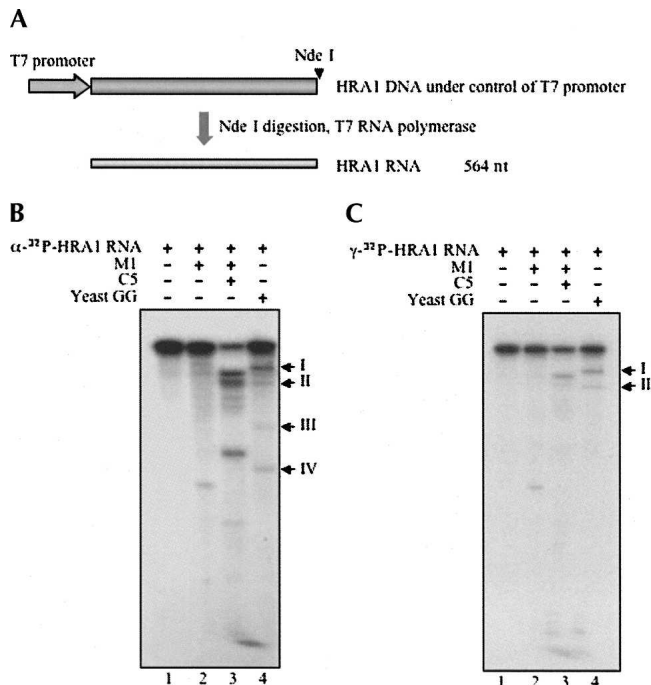


FIGURE 2. Cleavage analysis in vitro of yeast HRA1 RNA with various RNase P enzymes. (A) Yeast HRA1 RNA was transcribed in vitro after linearization of plasmid DNA by NdeI. Both internal labeled (B) and 5'-end-labeled (C) HRA1 RNA were prepared according to Materials and Methods, and then used for cleavage assays in vitro by catalytic *E. coli* M1 RNA (lane 2, plus 90 mM MgCl₂), *E. coli* RNase P holoenzyme (lane 3), and yeast RNase P holoenzyme (lane 4) in PA buffer (50 mM Tris-HCl at pH 7.5, 10 mM MgCl₂, 100 mM NH₄Cl). Labeled HRA1 RNA in buffer PA was used as a negative control (lane 1). Reactions were performed at 37°C for 60 min and stopped by adding 8 M urea dye. Samples were then electrophoresed in a 5% polyacrylamide/8 M urea gel and exposed to Kodak BioMax film.

not shown). Cleavage products of 5'-end-labeled HRA1 RNA were accumulated at 37°C as the reaction time increased from 5 to 60 min, as shown in Figure 3A. Another cleavage assay in vitro was also performed at 30°C. It yielded a similar accumulation of cleaved products (Fig. 3B).

The cleavage results for each product are listed in a table in Figure 3C and are illustrated graphically in Figure 3C. By comparing the major and minor cleavages of the two reactions at 37°C or 30°C, yeast RNase P appears to be more specific for the major cleavage (band I) at 30°C than at 37°C. For cleavage reactions at short times (shown in Fig. 3D,E), the rate for the major cleavage is much greater than that for the minor cleavage. As the culture temperature for yeast is usually at 30°C, the yeast RNase P cleavage in vitro at 30°C should resemble results in vivo.

The two cleavage sites by yeast RNase P were readily confirmed (Fig. 4A) by standard methods. The major cleavage is located at the 5' side at G404 (Fig. 4B, underlined). However, the minor cleavage seems to be a mixture

of cleavages at the 5' sides of three adjacent nucleotides from A338 to C340 (Fig. 4B, bold and underlined), which were located in the antisense region overlapped with the *GRS2* gene (bold, Fig. 4B). The major cleavage site was further confirmed with 3'-end-labeled HRA1 RNA and primer extension (data not shown). Using a Zuker program (MFOLD, <http://bioweb.pasteur.fr/seqanal/interfaces/mfold-simple.html>; Zuker et al. 1999), the model structure of HRA1 RNA is shown in Figure 4C, with cleavage sites indicated by arrows. Both the major cleavage site at the 5'-end G404 and the minor cleavage sites correspond to the canonical model RNase P site, the junction of a single strand and the 5' end of a helical region in the structure (Altman and Kirsebom 1999).

Endogenous HRA1 RNA transcription

To better understand the tiling microarray result in which *HRA1* gene transcription is affected by RNase P activity (Samanta et al. 2006), we checked the endogenous HRA1 RNA transcription in two yeast strains, *VS165* and *VS164*. Unlike the control *VS165* yeast strain that can grow on both plates containing galactose or glucose, the mutant *VS164* yeast strain grows only on galactose plate medium, but not on glucose plates at 30°C for 72 h. The RNase P activity in *VS164* on glucose is inhibited by lethal suppression of the essential Rpp1 protein subunit of yeast RNase P holoenzyme (Stolc and Altman 1997). After the phenotypes of control *VS165* and mutant *VS164* yeast strains were confirmed on plates, the two yeast strains were cultured in liquid medium with galactose for 4 h and split into medium with galactose or glucose for another 8 h, respectively (Materials and Methods). At 8 h, although the growth rate of the *VS164* strain was similar to the control *VS165* strain, the absolute amounts of some RNAs that were checked accumulated (Stolc and Altman 1997). Four total RNA samples were purified by hot phenol extraction (Materials and Methods) from *VS165* with galactose (Fig. 5A, lane 1), *VS165* with glucose (Fig. 5A, lane 2), *VS164* with galactose (Fig. 5A, lane 3), or *VS164* with glucose (Fig. 5A, lane 4), respectively. Even though 0.01 pmol transcribed HRA1 RNA in vitro was clearly detected with Northern blot analysis, the endogenous HRA1 RNA could not be observed by using two different probes (data not shown), an indication that the endogenous HRA1 RNA absolute amount might be very low. Endogenous U6 RNA was easily checked with a similar amount in all four RNA samples on the same nylon membrane (Fig. 5A, top panel), indicating the qualities of the RNA samples were good. A more sensitive RT-PCR method (Material and Methods) was then used and it successfully amplified the endogenous HRA1 RNA transcription (Fig. 5A, bottom panel). The endogenous HRA1 RNA was estimated using the RT-PCR result and then normalized with endogenous U6 RNA. The endogenous *HRA1* gene transcription after

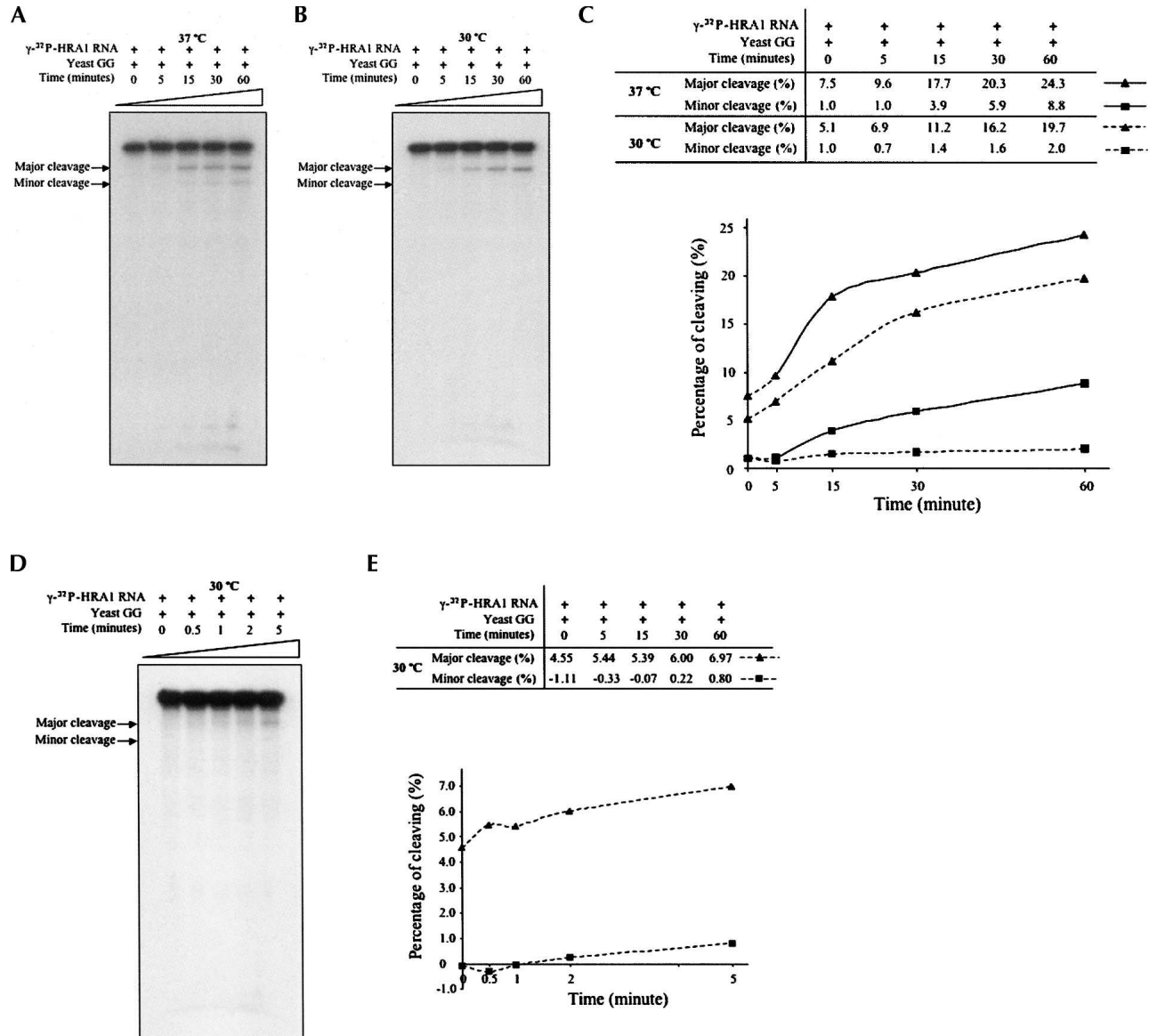


FIGURE 3. Comparison of cleavage analysis in vitro of yeast HRA1 RNA at different temperatures. (A,B) 5'-End-labeled HRA1 RNA was used for cleavage assays in vitro cleavage assays by yeast RNase P holoenzyme in PA buffer (see Materials and Methods) at 37°C (A) or at 30°C (B) and stopped at different time points by adding 8 M urea dye. Samples were then electrophoresed in 5% polyacrylamide/8 M urea gel and exposed to Kodak BioMax film. (C) Each product obtained from assays A and B was estimated by scanning films with Image Gauge (v3.3). The ratios of each product at different time points were obtained by dividing relevant product with the total amount of remaining substrate and products, as listed in the table. (Triangles) major cleavage at 37°C. (Squares) minor cleavage at 37°C. (Dashed line with triangles) major cleavage at 30°C. (Dashed line with squares) minor cleavage at 30°C. (D) 5'-End-labeled HRA1 RNA was used for cleavage assays in vitro by yeast RNase P holoenzyme in PA buffer at 30°C and stopped at time points by adding 8 M urea dye. Samples were treated as above. (E) (Dashed line with triangles) major cleavage at 30°C. (Dashed line with squares) minor cleavage at 30°C.

normalization had little change in the control *VS165* strain cultured with glucose (Fig. 5B, lane 2) or galactose (Fig. 5B, lane 1). However, the transcription of HRA1 RNA in the mutant *VS164* strain cultured with glucose (Fig. 5C, lane 4) is about 2.5-fold of the cells grown with galactose (Fig. 5B, lane 3). Thus, it clearly suggests that HRA1 RNA is also a substrate in vivo for RNase P, consistent with the aforementioned cleavage assay in vitro.

Deletion in the yeast *HRA1* gene

A 10-nt deletion in the yeast *HRA1* gene (Fig. 6A), including the major cleavage site, G404, was introduced into the yeast genome by transformation with the integrating plasmid YIplac128SCCH1D to get the strain *VS165CH1D*, which had a 10-nt deletion in the *HRA1* gene. A control yeast strain, *VS165CH1WT*, was also obtained by parallel

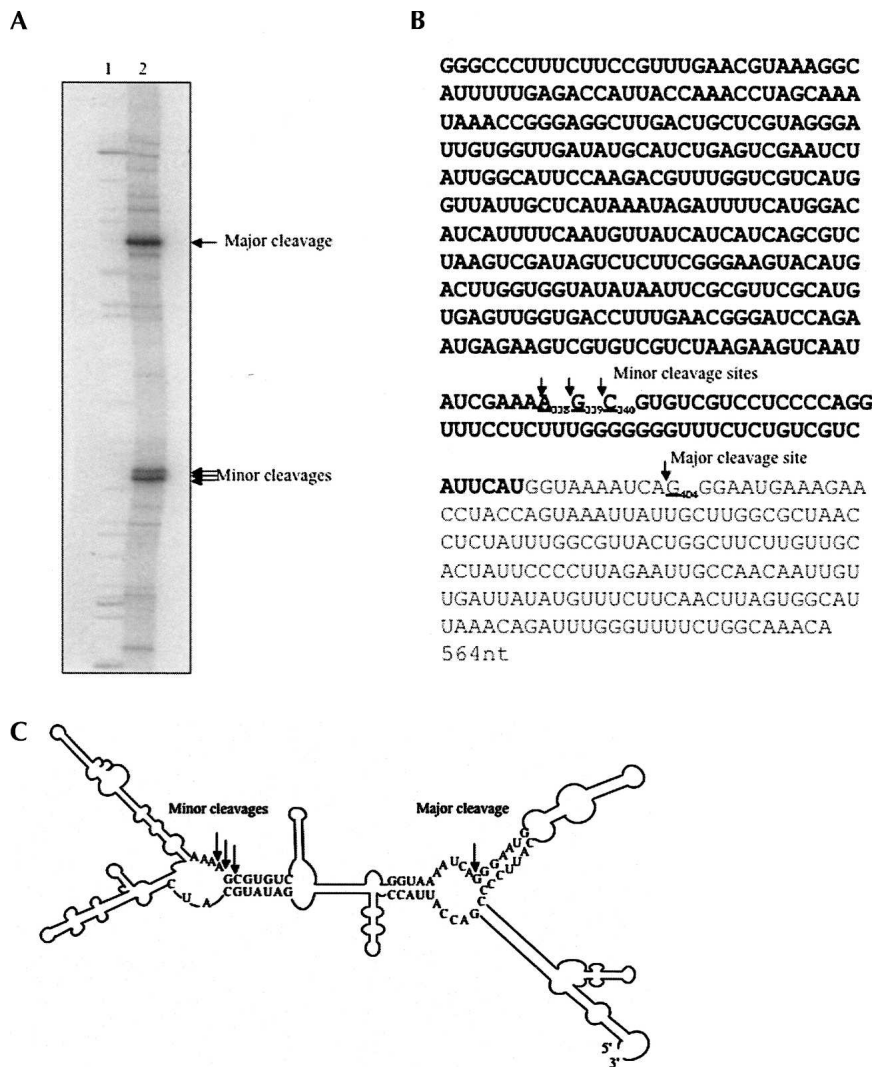


FIGURE 4. Cleavage sites of HRA1 RNA with yeast RNase P. (A) 5'-end-labeled HRA1 RNA was a substrate for yeast RNase P cleavage in vitro. An alkali ladder and partial RNase T1 digestion of HRA1 RNA, as described in Materials and Methods, were used for comparison with the cleavage products. Yeast HRA1 RNA cleaved by yeast RNase P holoenzyme, alkali ladder of HRA1 RNA, and partial RNase T1 digestion of HRA1 RNA were individually precipitated with ethanol with glycogen as carrier, resuspended with 8 M urea dye, and loaded on to 6% polyacrylamide/8 M urea sequencing gel. After separating, the gel was dried and exposed to BioMax film (Kodak). The major and minor cleavage sites were marked with arrows. (B) The major cleavage site was located at the 5' side of G404 (underlined), and the minor cleavage is a mixture of several cleavages at the 5' termini of three adjacent nucleotides from A338 to G340 (bold and underlined), which were located in the antisense region that overlapped with the *DRS2* gene (bold). (C) Scheme of cleavage of HRA1 RNA with major and minor cleavage sites (indicated by arrows). The secondary structure of HRA1 RNA was estimated using the MFOLD program (Zuker et al. 1999). Only individual nucleotides near the cleavage sites are shown.

transformation with the control integrating plasmid YIplac128SCCH1 (Materials and Methods). Both the deletion sequence in *VS165CH1D* and wild-type sequence in *VS155CH1WT* were confirmed by genomic PCR and sequence analysis. Comparison with the control wild-type yeast strain, *VS165CH1WT* (triangles), showed the 10-nt deletion in the *HRA1* gene had no effect on the growth of the mutant strain, *VS165CH1D* (squares), in either galac-

tose (left panel of Fig. 2B) or glucose (right panel of Fig. 2B) medium, when cultured at 30°C. The effect(s) of this 10-nt deletion in the *HRA1* gene on global gene expression is being tested further by microarray analysis.

DISCUSSION

We report the RNase P cleavage in vitro of HRA1 RNA from *S. cerevisiae*. HRA1 RNA could be cleaved by yeast RNase P at two sites (a major and a minor cleavage; Fig. 2). Yeast RNase P, *E. coli* RNase P holoenzyme, and its catalytic RNA subunit (M1 RNA) each cleaved HRA1 RNA at different sites (Fig. 2B,C). One explanation of these results is the notion that a critical function of the protein component from various species of RNase P is to alter substrate specificity and enhance catalytic efficiency besides binding the substrate (Niranjanakumari et al. 1998; Altman and Kirsebom 1999).

The endogenous transcription of HRA1 RNA was checked by RT-PCR in both control *VS165* and mutant *VS164* yeast strains. The HRA1 RNA amount is significantly increased in mutant *VS164* yeast strain cultured with glucose in which RNase P activity is depleted.

Since the yeast *HRA1* gene partially overlaps with the *DRS2* ORF region on the complementary genome strand (Fig. 1), deletion of the full length of the *HRA1* gene would certainly result in side effects reflected by the mutant *DRS2* gene. In this study, a 10-nt deletion in the *HRA1* gene, containing the cleavage G404 site, was designed upstream of the *DRS2* ORF on the sense strand, but subsequent studies showed that the 10-nt deletion had no effect on yeast growth (Fig. 6). The ongoing microarray analysis will elucidate the effect(s) of the *HRA1* gene on the

expressions of other genes, especially *DRS2* and *MAK16* ORFs (Fig. 1A) on the sense strand.

RNase P in *E. coli* can cleave other noncoding RNAs (for example, riboswitches; Altman et al. 2005) besides tRNA and rRNA. Since almost every method of gene identification used to assume that genes encode proteins, ncRNA genes have been effectively invisible and their functions are rarely studied (for review, see Eddy 2001). Very little was known about the

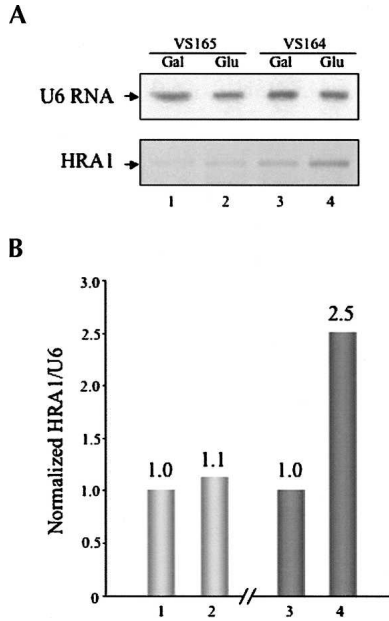


FIGURE 5. Transcription of yeast HRA1 RNA in vivo. (A) *S. cerevisiae* strains VS165 and VS164 (see Materials and Methods) were both cultured in liquid medium with galactose for 4 h, and then split into medium with either galactose or glucose for another 8 h, respectively. Four RNA samples were purified from VS165 with galactose (lane 1), VS165 with glucose (lane 2), VS164 with galactose (lane 3), or VS164 with glucose (lane 4) by the hot phenol method (Stolc and Altman 1997). Northern blots were performed as described (Guerrier-Takada et al. 1995). The endogenous U6 RNA was used as an internal control (top panel). The RT-PCR method was performed as described in Material and Methods. (B) Endogenous HRA1 RNAs from all four total RNA samples (A) were estimated by the RT-PCR result and normalized with endogenous U6 RNA.

noncoding RNA substrate candidates for RNase P. Recently, through microarray analysis, new noncoding RNAs were identified and were reported to be regulated by RNase P in both *E. coli* (Li and Altman 2003) and in *S. cerevisiae* (Samanta et al. 2006). It is not obvious whether the function of RNase P cleaving noncoding RNAs besides tRNA (HRA1 RNA, for example) originated during the “RNA world” (Gilbert 1986) or subsequently evolved from the “RNA–protein world.” RNA genes were thought of as rare relics of a primordial “RNA world.” These genes were presumed to have largely been replaced by a more efficient “protein world.” Perhaps, now an “RNA–protein world” instead of a “protein world” is the most appropriate label for Nature as we see it.

MATERIALS AND METHODS

Strains

Saccharomyces cerevisiae strains, the control VS165 (*MAT α GAL1 leu2–3, 112 ura3–1+pYCPGAL [URA3]*) and the mutant VS164 (*MAT α GAL1 leu2–3, 112 ura3–1+pYCPGAL::rpp1 [URA3]*), were

maintained in culture medium with galactose, and the depletion of endogenous RNase P activity in yeast VS164 strain was obtained by culturing in medium with glucose to inhibit yeast Rpp1 protein expression, but not in the VS165 control strain (Stolc and Altman 1997).

Enzymes

DNA restriction and other enzymes reacting with RNA were obtained from New England Biolabs unless described otherwise. Radiochemicals were from Amersham. Oligonucleotides were synthesized by the Keck Facility at Yale University.

Construction of DNA plasmids

The yeast *HRA1* gene was amplified directly from intact *S. cerevisiae* cells by using primer oligonucleotides HRA1F3 (5′-*TAATACGACTCACTATAGGCCCTTTCTCCGTTTGAA*-3′) with a T7 promoter sequence (in italics) and HRA1R3 (5′-*CATATGTTTGGCCAGAAAACCCAAATC*-3′) with an NdeI site (underlined). The amplified fragment was purified and inserted into the SmaI site of the pUC19 vector, to generate plasmid pUC19HRA1-3, which contained the *HRA1* gene under the control of the T7 promoter. Two partially overlapped yeast genome DNA fragments were individually amplified from *S. cerevisiae* cells by using primer oligonucleotides *SCCH1F1* (5′-*AAGGCTGCAGCGCACTA TACTACGCAAC*-3′) with a PstI site (in italics) and *SCCH1R3* (5′-*CAATGCCTTCTCTCCCGGTCTGCGTCGCCAACGTC*-3′) with SmaI site (in italics) or *SCCH1F3* (5′-*GTTGGCGACGCAGAC CCGGGAGAGAAAGGCATTGGTAGC*-3′) with SmaI site (in italics) and *SCCH1R4* (5′-*AAGGGAGCTCGTGCCACTTCTTGCTCAG*-3′) with SacI site (in italics), and were then fused by denaturation and annealing in a subsequent extension reaction. Finally, the fused and extended product was amplified by PCR using primer oligonucleotides *SCCH1F1* and *SCCH1R4*. The final PCR product was digested with PstI and SacI and inserted into the PstI and SacI sites of an integrating plasmid, YIplac128, with a LEU2 selection marker to obtain plasmid YIplac128SCCH1. A 10-nt deletion (ATCAGGGAAT, from 99,705 to 99,714) in the *HRA1* gene was introduced into YIplac128SCCH1 by two primer oligonucleotides Del FP (5′-*CTGTGTCATTCATGG TAAAGAAAAGAACCTACCAG*-3′) that did not have the sequence between A and G (underlined), normally found in HRA1 and DelRP (5′-*CTGGTAGGTTCTTTCTTTACCATGAATGACGACAG*-3′) without the deleted sequences between C and T (underlined) according to the protocol described by the Stratagene QuikChange Site-Directed Mutagenesis Kit to make plasmid YIplac128SCCH1D, which contains a 10-nt deletion. All plasmids were confirmed by restriction enzyme digestion and by DNA sequencing, which was performed according to the protocol described by the USB Corporation Sequencing Kit with slight modifications.

Transcription in vitro

Yeast HRA1 RNA was transcribed by T7 RNA polymerase from plasmid pUC19HRA1-3, which had been first linearized by NdeI. The transcription reactions in vitro were carried out as described (Yuan et al. 1992), and transcripts were purified by using Sephadex G-50 Quick Spin columns (Roche Diagnostics). For

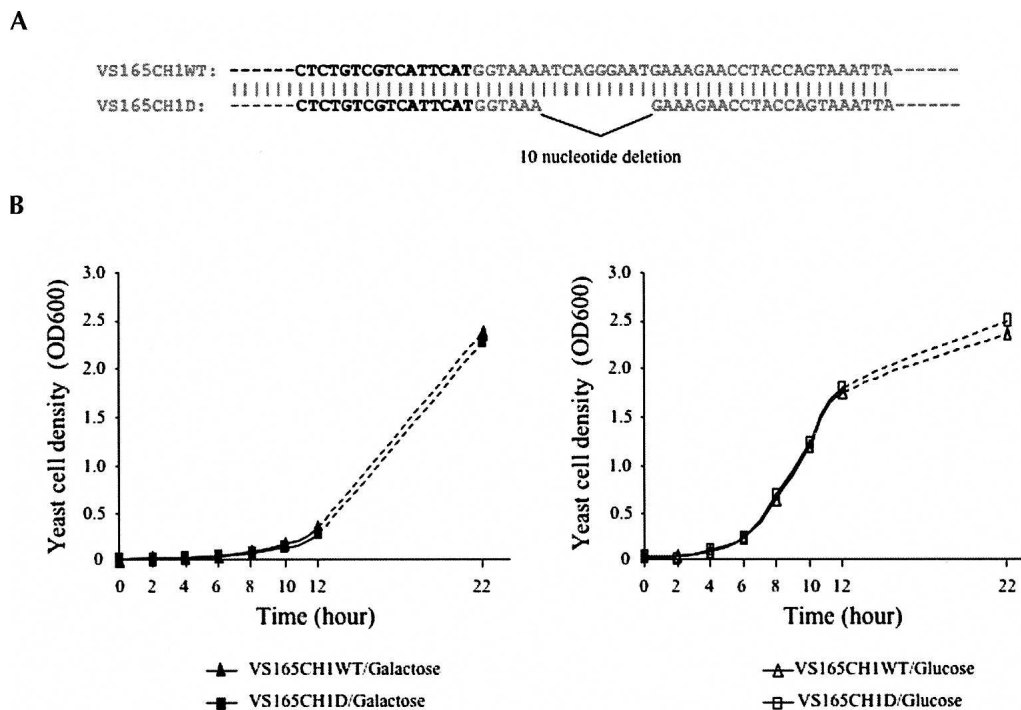


FIGURE 6. Deletion analysis of the yeast *HRA1* gene. (A) The 10-nt deletion (ATCAGGGAAT, from 99,705 to 99,714) in the *HRA1* gene is designed upstream of the sense *DRS2* gene (bold) in yeast chromosome 1 and introduced into yeast cells (see Materials and Methods). (B) Growth of the wild-type strain, *VS165CH1WT* (triangles), and deletion strain, *VS165CH1D* (squares), after transfer from overnight galactose-containing medium to either galactose-containing (left panel) or glucose-containing (right panel) medium at $T = 0$ h. Yeast cells were cultured at 30°C , and cell densities were measured at times indicated.

5'-end labeling, the transcribed *HRA1* RNA was first dephosphorylated with 0.01 U calf intestinal phosphatase (CIP)/pmol RNA, and then 5'-end labeled by T4 polynucleotide kinase with the presence of $[\gamma\text{-}^{32}\text{P}]\text{ATP}$. For internal labeling, transcription in vitro was performed with $[\alpha\text{-}^{32}\text{P}]\text{GTP}$ from linearized pUC19*HRA1*-3. Both the 5'-end-labeled and internally labeled *HRA1* RNAs were purified on 5% polyacrylamide/8 M urea gel, and used at 5000 cpm per cleavage reaction. *E. coli* RNase P RNA subunit M1 was generated by transcription in vitro using T7 RNA polymerase (Promega) and purified by using Sephadex G-50 Quick Spin columns (Roche Diagnostics) (Vioque et al. 1988). The substrate RNA, *E. coli* precursor tRNA^{Tyr} (pTyr), was transcribed in vitro with $[\alpha\text{-}^{32}\text{P}]\text{GTP}$, purified on a 5% polyacrylamide/8 M urea gel, and used at 5000 cpm per reaction.

Preparation of RNase P enzymes

E. coli RNase P protein subunit C5 (Gopalan et al. 1997) was used to reconstitute in vitro *E. coli* RNase P holoenzyme in PA buffer (50 mM Tris-HCl at pH 7.5, 10 mM MgCl_2 , 100 mM NH_4Cl) with *E. coli* M1 RNA, which was transcribed in vitro. Yeast RNase P holoenzyme was partially purified through the glycerol gradient step.

RNase P cleavage assay in vitro

RNase P cleavage assays were carried out in buffer PA (50 mM Tris-HCl at pH 7.5, 10 mM MgCl_2 , 100 mM NH_4Cl) with *E. coli* M1 RNA plus an additional 90 mM MgCl_2 , or with reconstituted in vitro *E. coli* RNase P holoenzyme (M1 RNA plus C5 protein),

or with purified yeast RNase P holoenzyme at 37°C or 30°C . Reactions were stopped at designated time points by adding 8 M urea dye, and the mixture was electrophoresed on 5% polyacrylamide/8 M urea gels and exposed to BioMax film (Kodak). If needed, each product from the cleavage assay was estimated quantitatively with Image Gauge (v3.3). The ratios of each product were obtained by dividing the relevant product with the total amount of remaining substrate and products.

Alkali ladder and partial RNase T1 digestion of *HRA1* RNA

An alkali ladder of *HRA1* RNA was obtained by incubating 5'-end-labeled *HRA1* RNA in alkali buffer (50 mM NaHCO_3 at pH 9.2, 1 mM EDTA) at 95°C for 3 min. Partial RNase T1 (Calbiochem) digestion of *HRA1* RNA was carried out in PA buffer (50 mM Tris-HCl at pH 7.5, 10 mM MgCl_2 , 100 mM NH_4Cl) on ice for 30 sec, and stopped by adding phenol. Yeast *HRA1* RNA cleaved by yeast RNase P holoenzyme, an alkali ladder of *HRA1* RNA, and partial RNase T1 digestion of *HRA1* RNA were individually precipitated with ethanol and glycogen as carrier, resuspended with 8 M urea dye, and loaded on to 6% PAGE/urea sequencing gel. After electrophoretic separation, the gel was dried and exposed to BioMax film (Kodak).

Total RNA preparation, Northern blot, and RT-PCR

Two yeast strains, *VS165* and *VS164*, were individually cultured in liquid medium with galactose for 4 h and then split into both

medium with galactose or glucose for another 8 h (25 mL, OD₆₀₀ = 0.5). After that, yeast pellets were obtained by centrifugation and stored at -80°C. Total RNAs were isolated from yeast cell pellets by the hot phenol method as described (Stolc and Altman 1997), followed by DNase I (Worthington Biochemical Corp.) treatment to eliminate genomic DNAs. Both Northern blot and RT-PCR were used to detect the endogenous transcription of yeast HRA1 RNA. Total RNA samples were separated in 3% agarose gel and transferred onto a positively charged nylon membrane (Roche Diagnostics) with 0.01 pmol in vitro transcribed HRA1 RNA as a positive control.

Northern blots were performed as described (Guerrier-Takada et al. 1995) with different probes NBPORA1 (5'-CTAGGT TTGGTAATGGTC-3') or PRIEXT1 (5'-GAATAGTGCAACAA GAAGCCAG-3'). Endogenous U6 RNA was also checked by Northern blot with oligo U6 (5'-TCATCCTTATGCAGGG-3') as probe to be used as an internal control. Reverse transcription of yeast total RNA by superscript reverse transcriptase (Invitrogen) was carried out with gene-specific primer oligonucleotide HRA1R3, followed by PCR with oligonucleotides HRA1F3 and HRA1R3 for 30 cycles. After RT-PCR, cDNAs were separated in an agarose gel and quantified by Image Gauge (v3.3). The relative amount of endogenous HRA1 RNA was estimated by scanning the RT-PCR gels and normalized with U6 RNA as an internal control.

Yeast transformation

YIplac128SCCH1 and YIplac128SCCH1D were individually linearized with SmaI and then transformed into competent VS165 yeast cells according to the polyethylene glycol (PEG)/lithium acetate (LiAc) method (Gietz and Woods 2002) with slight modification. Briefly, an overnight culture of VS165 yeast cells was transferred to fresh media with galactose (25 mL, OD₆₀₀ = 0.15) and incubated for another 5 h at 30°C (OD₆₀₀ = 0.5). Yeast cells were harvested by centrifugation at 3000g for 5 min, washed with sterile water, and resuspended in 200 µL TE/LiAc (10 mM Tris HCl, 1 mM EDTA, 100 mM LiAc at pH 7.5) to obtain competent cells. For each transformation, 100 µL competent cells were added with 5 µg linearized DNA, 100 µg single-strand carrier DNA, and 600 µL PEG/LiAc (40% PEG 4000 [w/v], 10 mM Tris HCl, 1 mM EDTA, 100 mM LiAc at pH 7.5), and cultured at 30°C for 30 min. After adding 10% DMSO, the transformation mixtures were heat shocked at 42°C for 15 min and chilled on ice. The yeast cells were then centrifuged, resuspended with TE (10 mM Tris HCl, 1 mM EDTA at pH 7.5), separated onto plates that lacked leucine, and incubated at 30°C for 3–4 d. Transformants were further confirmed by genome PCR amplifying by using primer oligonucleotides HRA1F3 and HRA1R3, and were checked by DNA sequencing with HRASEQ1 (5'-TCATCAGCGTCTAAGTC-3') at the DNA Analysis Facility at Yale University. For further study, total RNAs were isolated from yeast cell pellets by the hot phenol method as described (Stolc and Altman 1997).

ACKNOWLEDGMENTS

We thank Dr. Viktor Stolc and Dr. Hideo Tsubouchi, as well as our laboratory colleagues, especially Dr. Cecilia Guerrier-Takada,

for helpful discussions and technical support. Plasmid YIplac128 was donated by Dr. Shirleen Roeder at Yale University. L.Y. is supported by a Focused Giving grant from the Johnson and Johnson Co.; Yale University assisted S.A.

Received January 10, 2007; accepted February 12, 2007.

REFERENCES

- Altman, S. and Kirsebom, L. 1999. Ribonuclease P. In *The RNA world*, 2nd ed. (eds. R.F. Gesteland et al.), pp. 351–380. Cold Spring Harbor Laboratory Press, Cold Spring Harbor, NY.
- Altman, S., Wesolowski, D., Guerrier-Takada, C., and Li, Y. 2005. RNase P cleaves transient structures in some riboswitches. *Proc. Natl. Acad. Sci.* **102**: 11284–11289.
- Chamberlain, J.R., Pagan, R., Kindelberger, D.W., and Engelke, D.R. 1996. An RNase P RNA subunit mutation affects ribosomal RNA processing. *Nucleic Acids Res.* **24**: 3158–3166.
- Christie, K.R., Weng, S., Balakrishnan, R., Costanzo, M.C., Dolinski, K., Dwight, S.S., Engel, S.R., Feierbach, B., Fisk, D.G., Hirschman, J.E., et al. 2004. *Saccharomyces* Genome Database (SGD) provides tools to identify and analyze sequences from *Saccharomyces cerevisiae* and related sequences from other organisms. *Nucleic Acids Res.* **32**: D311–D314.
- Eddy, S.R. 2001. Noncoding RNA genes and the modern RNA world. *Nat. Rev. Genet.* **2**: 919–929.
- Gietz, R.D. and Woods, R.A. 2002. Transformation of yeast by lithium acetate/single-stranded carrier DNA/polyethylene glycol method. *Methods Enzymol.* **350**: 87–96.
- Gilbert, W. 1986. The RNA world. *Nature* **319**: 618.
- Gopalan, V., Baxevanis, A.D., Landsman, D., and Altman, S. 1997. Analysis of the functional role of conserved residues in the protein subunit of ribonuclease P from *Escherichia coli*. *J. Mol. Biol.* **267**: 818–829.
- Gopalan, V., Vioque, A., and Altman, S. 2002. RNase P: Variations and uses. *J. Biol. Chem.* **277**: 6759–6762.
- Guerrier-Takada, C., Li, Y., and Altman, S. 1995. Artificial regulation of gene expression in *Escherichia coli* by RNase P. *Proc. Natl. Acad. Sci.* **92**: 11115–11119.
- Hartmann, E. and Hartmann, R.K. 2003. The enigma of ribonuclease P evolution. *Trends Genet.* **19**: 561–569.
- Li, Y. and Altman, S. 2003. A specific endoribonuclease, RNase P, affects gene expression of polycistronic operon mRNAs. *Proc. Natl. Acad. Sci.* **100**: 13213–13218.
- Li, Y. and Altman, S. 2004. In search of RNase P RNA from microbial genomes. *RNA* **10**: 1533–1540.
- Mandal, M., Lee, M., Barrick, J.K., Wenberg, Z., Emilsson, G.M., Ruzzo, W.L., and Breaker, R.R. 2004. A glycine-dependent riboswitch that uses cooperative binding to control gene expression. *Science* **306**: 275–279.
- Niranjanakumari, S., Stams, T., Cray, S.M., Christianson, D.W., and Fierke, C.A. 1998. Protein component of the ribozyme ribonuclease P alters substrate recognition by directly contacting precursor tRNA. *Proc. Natl. Acad. Sci.* **95**: 15212–15217.
- Ripmaster, T.P., Vaughn, G.P., and Woolford Jr., J.L. 1993. DRS1 to DRS7, novel genes required for ribosome assembly and function in *Saccharomyces cerevisiae*. *Mol. Cell. Biol.* **12**: 7901–7912.
- Samanta, M.P., Tongprasit, W., Sethi, H., Chin, C.S., and Stolc, V. 2006. Global identification of noncoding RNAs in *Saccharomyces cerevisiae* by modulating an essential RNA processing pathway. *Proc. Natl. Acad. Sci.* **103**: 4192–4197.
- Stolc, V. and Altman, S. 1997. Rpp1, an essential protein subunit of nuclear RNase P required for processing of precursor tRNA and 35S precursor rRNA in *Saccharomyces cerevisiae*. *Genes & Dev.* **11**: 2926–2937.

- Vioque, A., Arnez, J., and Altman, S. 1988. Protein–RNA interactions in the RNase P holoenzyme from *Escherichia coli*. *J. Mol. Biol.* **202**: 835–848.
- Xiao, S., Scott, F., Fierke, C.A., and Engelke, D.R. 2002. Eukaryotic ribonuclease P: A plurality of ribonucleoprotein enzymes. *Annu. Rev. Biochem.* **71**: 165–189.
- Yang, L., Wesolowski, D., Li, Y., and Altman, S. 2005. Analysis of putative RNase P RNA from orthopoxviruses. *J. Mol. Biol.* **354**: 529–535.
- Yuan, Y., Hwang, E.S., and Altman, S. 1992. Targeted cleavage of mRNA by human RNase P. *Proc. Natl. Acad. Sci.* **89**: 8006–8010.
- Zuker, M., Mathews, D.H., and Turner, D.H. 1999. Algorithms and thermodynamics for RNA secondary structure prediction: A practical guide in RNA biochemistry and biotechnology. In *RNA biochemistry and biotechnology* (eds. J. Barciszewski and B.F.C. Clark), pp. 11–43. NATO ASI Series, Kluwer Academic Publishers, Dordrecht, The Netherlands.