

- 29 **Safar J**, Wille H, Itri V, et al. Eight prion strains have PrP<sup>Sc</sup> molecules with different conformations. *Nat Med* 1998;4:1157–65.
- 30 **Ironside JW**, Head MW, Bell JE, et al. Laboratory diagnosis of variant Creutzfeldt-Jakob disease. *Histopathology* 2000;37:1–9.
- 31 **Prusiner SB**, Cochran SP, Groth DF, et al. Measurement of the scrapie agent using an incubation time interval assay. *Ann Neurol* 1982;11:353–8.
- 32 **Flechsig E**, Shmerling D, Hegyi I, et al. Prion protein devoid of the octapeptide repeat region restores susceptibility to scrapie in PrP knockout mice. *Neuron* 2000;27:399–408.
- 33 **Axon AT**, Beilenhoff U, Bramble MG, et al. Variant Creutzfeldt-Jakob disease (vCJD) and gastrointestinal endoscopy. *Endoscopy* 2001;33:1070–80.

## EDITOR'S QUIZ: GI SNAPSHOT .....

### Chronic diarrhoea with thickening of the colonic wall

Robin Spiller, Editor

#### Clinical presentation

A 36-year-old woman who had a seven-year medical history of type 1 diabetes mellitus presented with diarrhoea of 1-month duration. She denied abdominal pain or rectal bleeding. On examination, she was afebrile and there was no tenderness on palpation in the abdomen, with increased bowel sounds. Laboratory examination was normal except for hyperglycaemia. Stool culture was negative. A colonoscopic picture of the sigmoid colon (fig 1), a barium enema study (fig 2) and a pelvic computed tomography scan (fig 3) were carried out.

#### Question

What is the diagnosis?

See page 114 for answer

This case is submitted by:

**K Kishimoto, A Hokama, S Irei, H Aoyama, R Tomiyama, T Hirata,  
F Kinjo, J Fujita**

First Department of Internal Medicine, University of the Ryukyus,  
Okinawa, Japan

**M Sakiyama**

Second Department of Internal Medicine, University of the Ryukyus,  
Okinawa, Japan

Correspondence to: A Hokama, First Department of Internal Medicine,  
University of the Ryukyus, 207 Uehara, Nishihara, Okinawa 903-0215, Japan;  
hokama-a@med.u-ryukyu.ac.jp

doi: 10.1136/gut.2006.093096

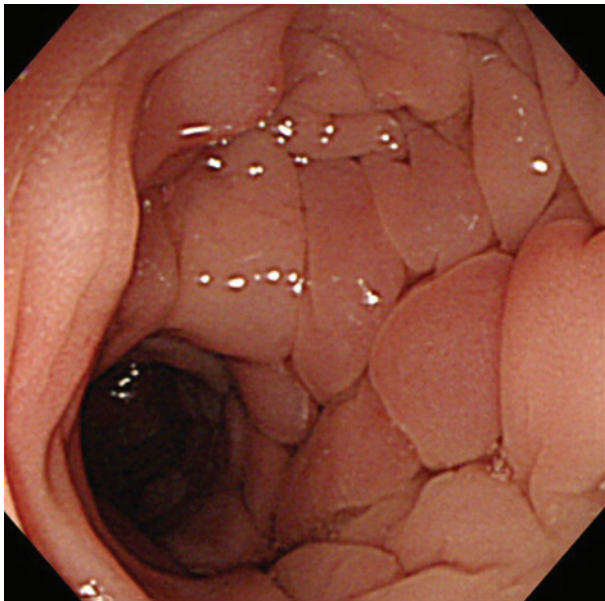


Figure 1 Colonoscopy of the sigmoid colon.

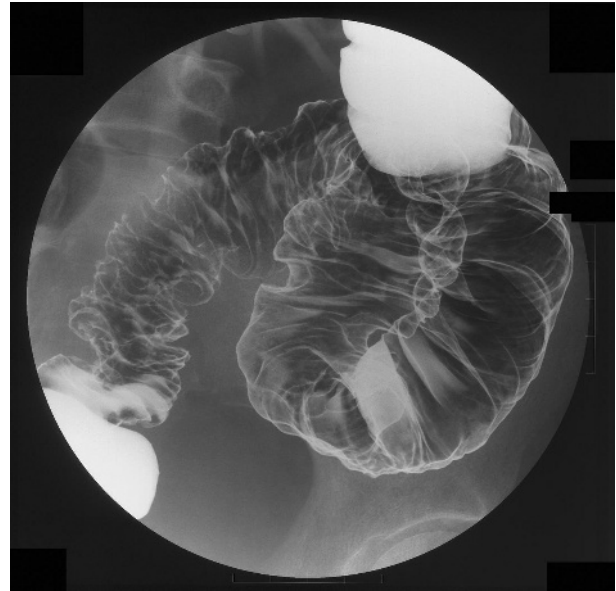


Figure 2 Barium contrast study of the sigmoid colon.



Figure 3 Computed tomography of the sigmoid colon.