

Ocular Neovascularisation (VISION) treated 1186 patients with more than 9000 IV Macugen injections and reported no RPE tears during a 2 year follow up.<sup>5</sup> As IV Avastin injections are an "off-label use of a FDA approved drug," several physicians established an internet register to track adverse events ([https://www.formrouter.net/forms@PACEA/AvastinSafetySurvey05\\_A.aspx](https://www.formrouter.net/forms@PACEA/AvastinSafetySurvey05_A.aspx)). This register so far contains no RPE tear (Phil Rosenfeld, Anne Fung, personal communication).

In conclusion, we present two patients with occult CNV and PED who developed a RPE tear early after the first IV injection of Avastin. The role of intravitreal Avastin therapy in the development of this RPE tear is not clear.<sup>6</sup> As occult CNV are frequently accompanied by a PED, we may face a higher incidence of acute RPE tears after intravitreal antiangiogenic injections compared to classic CNV after PDT.<sup>1</sup> Patients need to be informed about this possible complication in this novel off-label use drug.

**C H Meyer, S Mennel, J C Schmidt, P Kroll**  
Department of Ophthalmology, Philipps University, Marburg, Germany

Correspondence to: Carsten H Meyer, MD, Department of Ophthalmology, Philipps-University Marburg, Robert-Koch-Strasse 4, 35037 Marburg, Germany; [meyer\\_eye@yahoo.com](mailto:meyer_eye@yahoo.com)

In part presented at the ASRS, Cannes 2006.

doi: 10.1136/bjo.2006.093732

Accepted for publication 4 April 2006

Financial support: none.

Proprietary interest: none.

## References

- 1 Gelissen F, Inhoffen W, Partsch M, et al. Retinal pigment epithelial tear after photodynamic therapy for choroidal neovascularization. *Am J Ophthalmol* 2001;131:518–20.
- 2 Rosenfeld PJ, Moshfeghi AA, Puliafito CA. Optical coherence tomography findings after an intravitreal injection of bevacizumab (Avastin) for neovascular age-related macular degeneration. *Ophthalmic Surg Lasers Imaging* 2005;36:331–5.
- 3 Meyer CH, Toth CA. Retinal pigment epithelial tear with vitreomacular attachment: a novel pathogenic feature. *Graefes Arch Clin Exp Ophthalmol* 2001;239:325–33.

- 4 Hesse L. Tissue-type plasminogen activator. An enzyme with multiple uses in ophthalmology. *Ophthalmology* 1997;94:366–71.
- 5 Gragoudas ES, Adamis AP, Cunningham ET Jr, et al. VEGF Inhibition Study in Ocular Neovascularization Clinical Trial Group. Pegaptanib for neovascular age-related macular degeneration. *N Engl J Med* 2004;351:2805–16.
- 6 Kroll P, Meyer CH. Which treatment is best for which AMD patient? [editorial]. *Br J Ophthalmol* 2006;90:128–30.

## Increased expression of mucinous glycoprotein KL-6 in human pterygium

Pterygia represent growth onto the cornea of fibrovascular tissue continuous with the conjunctiva.<sup>1</sup> KL-6 (Krebs von den Lunge-6) is a high molecular weight mucinous glycoprotein, and the monoclonal antibody reacts with the sugar moiety of MUC-1.<sup>2–3</sup> We have reported that measurement of serum KL-6 levels is useful for the diagnosis and management of uveitis patients with sarcoidosis.<sup>4,5</sup> The aim of this study was to examine the expression of KL-6, and Ki-67, a proliferation marker, in normal human conjunctiva, pterygium, and pseudopterygium tissues.

## Methods

Five samples consisting of one normal conjunctiva, three pterygia, and one pseudopterygium were surgically collected. Formalin fixed and paraffin embedded tissue sections were incubated with anti-KL-6 and anti-Ki-67 monoclonal antibodies, and then examined immunohistochemically.

## Results

Immunoreactivity for KL-6 was detected on the apical membrane of the wing and basal cells in the normal conjunctiva. In the human pterygium head, immunoreactivity for KL-6 was observed on the apical membrane and in cytoplasm of the epithelium (fig 1A–E). In the pterygium body, immunoreactivity for KL-6 was strongly detected in cytoplasm and/or circumferential membrane of epithelial cells (fig 1G–K). Many KL-6 positive cells were observed in the superficial layer, while the immunoreactive cells were not detected in the subepithelial layer. Although KL-6 immunopositive cells were detected in the basal layer of the pseudopterygium, superficial cells did not express KL-6. The number

of KL-6 immunopositive epithelial cells was lower than those in pterygia and the normal conjunctiva. Table 1 summarises immunopositive rate of KL-6.

Nuclear immunoreactivity for Ki-67 was detected in each epithelium (fig 1F, L). The number of Ki-67-positive nuclei was higher in pterygium head (labelling index: 13.6%) than that in the body (3.3%).

## Comment

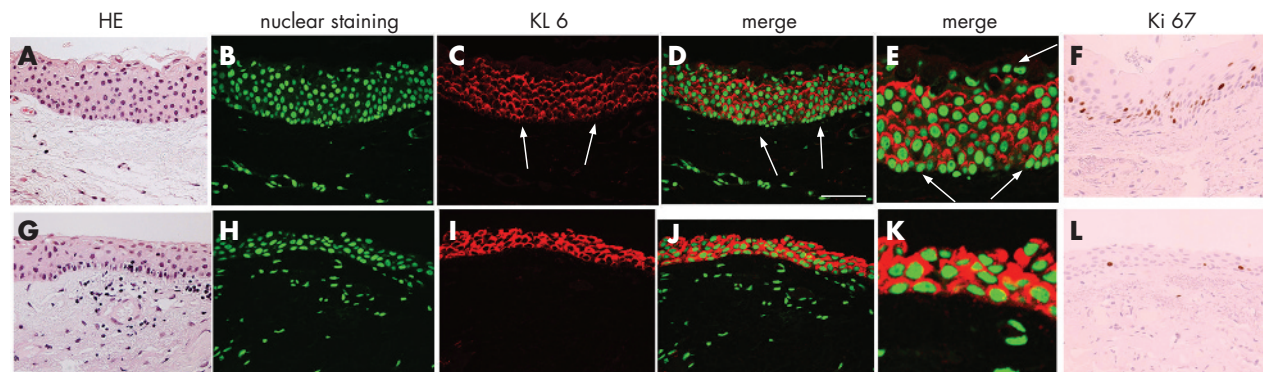
There was no significant difference in KL-6 immunopositive rate of basal and suprabasal layers between pterygia and normal conjunctiva. This suggests that pterygia seem to show no obvious change in mucin secretion compared with normal conjunctiva. In contrast, KL-6 was downregulated in the pseudopterygium, implicating advanced loss of the conjunctival epithelium's ability to produce mucin. Although it is sometimes hard to distinguish pterygia from pseudopterygia histopathologically, pseudopterygia clearly differ from pterygia with regard to KL-6 expression.

In this study, we showed the diversity of subcellular immunolocalisation of KL-6 in pterygia and the normal conjunctiva. As recently demonstrated, the cytoplasm/circumferential membrane staining pattern of KL-6 in colorectal carcinoma contributed to unfavourable prognosis when compared with apical membrane patterns.<sup>6</sup> Moreover, the number of Ki-67 positive nuclei was higher in the pterygium head than in the body, indicating that proliferation activity was high in the pterygium apex. Taken together, subcellular reactivity of KL-6 in human pterygia might be correlated with pathobiological behaviour such as corneal invasion.

It has been demonstrated that pterygium body fibroblasts play an important part in the pathogenesis and development by expressing gene products.<sup>1,7,8</sup> As recently reported, KL-6 molecules had pro-proliferative and anti-apoptotic effects on lung fibroblasts,<sup>9</sup> which are correlated with epithelial-mesenchymal interactions in interstitial lung disease.<sup>9</sup> The upregulation of KL-6 expression might be associated with the proliferation of pterygium fibroblasts and invasion of the cornea.

## Acknowledgements

This study was supported by a grant for research on sensory and communicative disorders from the Ministry of Health, Labor, and Welfare, and by



**Figure 1** Haematoxylin and eosin staining (A, G), and expression of KL-6 (B–E, red) and Ki-67 (F, L) in the human pterygium head (A–F) and body (G–L). KL-6 immunoreactivity is detected in the pterygium tissue (B–D). At high magnification, immunoreactivity for KL-6 is located in the cytoplasm and on the cell membrane of many epithelial cells (E). KL-6 expression is not detected in superficial cells (E, arrows), nor in the basement membrane (C–E, arrows). Immunoreactivity for KL-6 is strongly noted in pterygium body epithelium (H–J), especially in the cytoplasm (K). Nuclear immunoreactivity for Ki-67 is detected in several pterygium epithelial cells (F, L). Green: nuclear staining with YO-Pro-1. Bar = 50  $\mu$ m.

**Table 1** Summary of KL-6 immunopositive pattern in normal human conjunctiva, pterygia, and a pseudopterygium

	Total (%)	Cytoplasmic/ circumferential membrane	Apical
Normal conjunctiva			
Superficial	0	0	0
Wing	100	7.3	92.7
Basal	100	3.0	97.0
Pterygium head			
Superficial	25	0	25.0
Suprabasal	100	9.4	90.6
Basal	90	5.0	85.0
Pterygium body			
Superficial	83.3	35.7	47.6
Suprabasal	100	62.5	37.5
Basal	100	65.5	34.5
Pseudopterygium			
Superficial	16.7	8.4	8.3
Suprabasal	58.2	9.5	48.7
Basal	65.5	3.4	62.1

grants in aid for Scientific Research from The Ministry of Education, Culture, Sports, Science, and Technology (MEXT), Japan.

S Kase, N Kitaichi, N Furudate, K Yoshida, S Ohno

Department of Ophthalmology and Visual Sciences, Hokkaido University Graduate School of Medicine, N15 W7, Kita-ku, Sapporo 060-8638, Japan

Correspondence to: Satoru Kase, MD, PhD, Department of Ophthalmology and Visual Sciences, Hokkaido University Graduate School of Medicine, N15 W7, Kita-ku, Sapporo 060-8638, Japan; kaseron@med.hokudai.ac.jp

doi: 10.1136/bjo.2006.094300

Accepted for publication 23 April 2006

## References

- Solomon A, Grueterich M, Li DQ, *et al.* Overexpression of Insulin-like growth factor-binding protein-2 in pterygium body fibroblasts. *Invest Ophthalmol Vis Sci* 2003;**44**:573–80.
- Kohno N, Akiyama M, Kyoizumi S, *et al.* Detection of soluble tumor-associated antigens in sera and effusions using novel monoclonal antibodies, KL-3 and KL-6, against lung adenocarcinoma. *Jpn J Clin Oncol* 1988;**18**:203–16.
- Kohno N, Kyoizumi S, Awaya Y, *et al.* New serum indicator of interstitial pneumonitis activity. Sialylated carbohydrate antigen KL-6. *Chest* 1989;**96**:68–73.
- Kitaichi N, Ariga T, Kase S, *et al.* Usefulness of quantifying serum KL-6 levels in the follow-up of uveitic patients with sarcoidosis. *Graefes Arch Clin Exp Ophthalmol* 2006;**244**:433–7.
- Kitaichi N, Kotake S, Shibuya H, *et al.* Increase of KL-6 in sera of uveitic patients with sarcoidosis. *Graefes Arch Clin Exp Ophthalmol* 2003;**241**:879–83.
- Guo Q, Tang W, Inagaki Y, *et al.* Clinical significance of subcellular localization of KL-6 mucin in primary colorectal adenocarcinoma and metastatic tissues. *World J Gastroenterol* 2006;**12**:54–9.
- Solomon A, Li DQ, Lee SB, *et al.* Regulation of collagenase, stromelysin, and urokinase-type plasminogen activator in primary pterygium body fibroblasts by inflammatory cytokines. *Invest Ophthalmol Vis Sci* 2000;**41**:2154–63.
- Touhami A, Di Pasquale MA, Kawatika T, *et al.* Characterisation of myofibroblasts in fibrovascular tissues of primary and recurrent pterygia. *Br J Ophthalmol* 2005;**89**:269–74.
- Ohshimo S, Yokoyama A, Hattori N, *et al.* KL-6, a human MUC1 mucin, promotes proliferation and survival of lung fibroblasts. *Biochem Biophys Res Commun* 2005;**338**:1845–52.

## A simple technique for indirect gonioscopy for patients who cannot be examined at the slit lamp

Gonioscopy, the visualisation of the anterior chamber angle, is central to the examination during the initial and subsequent evaluation of a glaucoma patient.<sup>1</sup> In the infirm or immobile patient it can present a challenge to the examining ophthalmologist when patients are unable to position adequately for slit lamp microscopy. Here we present a valuable technique for indirect gonioscopy utilising a mirrored lens and the direct ophthalmoscope. To our knowledge this method has not previously been described.

## Technique

Instead of using the slit lamp for magnification, we use a direct ophthalmoscope with the internal lens set to +15 dioptres or +20 dioptres. The gonioscopy lens is applied in the usual way, with the examiner holding the lens in one hand and the direct ophthalmoscope in the other (fig 1). Using a four mirrored lens in this way, indentation gonioscopy is possible. With practice, this technique can be performed in patients who are supine (for example, in bed) or seated (for example, in a wheelchair).

## Comment

This simple technique allows for gonioscopy in patients who cannot be examined at the slit lamp. It uses equipment that should be readily available in the glaucoma clinic. For clinicians who are experienced at slit lamp gonioscopy, it is a relatively easy procedure to learn and yields comparable views of the iridocorneal angle enabling detection of configuration variants and angle anomalies. We find the technique very useful in the evaluation of many patients who might otherwise be impossible to examine fully.

A D Shaw, C A M Burnett, T Eke

Norfolk and Norwich University Hospital, Norwich NR4 7UY, UK

Correspondence to: Mr Tom Eke, Norfolk and Norwich University Hospital, Norwich NR4 7UY, UK; tom.eke@nnuh.nhs.uk

doi: 10.1136/bjo.2006.093021



**Figure 1** Demonstration of the technique of indirect gonioscopy utilising a four mirrored contact lens and the direct ophthalmoscope.

Accepted for publication 7 April 2006

Competing interest: none.

## Reference

- Palmberg P. Gonioscopy. In: Ritch R, Shields MB, Krupin T, eds. *The glaucomas. Basic sciences*. St Louis: Mosby, 1996:455.

## Haemorrhagic vitreoretinal complications associated with combined antiplatelet agents

Antiplatelet agents are increasingly encountered in combination<sup>1–3</sup> or taken with non-steroidal anti-inflammatory drugs (NSAIDs), which potentiate their action. We present four cases of intraocular haemorrhage associated with these combinations.

## Case 1

An 83 year old man presented with visual acuity reduced to hand motions in both eyes as a result of dense vitreous haemorrhage. He had hypertension, which was being treated, but was not diabetic. Medications included 75 mg clopidogrel once daily and diclofenac.

He underwent a right vitrectomy with cryotherapy and gas tamponade. There was copious intraocular and extraocular bleeding that was difficult to control, significantly prolonging surgery. Postoperatively the acuity was still hand motions with persistent vitreous haemorrhage. Clopidogrel and diclofenac were discontinued before left eye surgery.

At left vitrectomy dense vitreous blood and peripheral disciform lesions were found. Final acuity was 6/12 left eye. The right eye required further surgery for retinal detachment with a final acuity of hand movements.

## Case 2

A 72 year old man with inferior retinal detachment under silicone oil, was scheduled for vitrectomy and retinectomy. He was taking aspirin 75 mg once daily and clopidogrel 75 mg once daily, following myocardial infarction (MI). Retinectomy was performed under oil after bipolar diathermy. Extensive and persistent haemorrhage from the cut retina was difficult to control, prolonging surgery. At follow up he had a hyphaema, which cleared over 1 month. The retina redetached under oil.

We have encountered two further cases of spontaneous vitreous haemorrhage associated with combination antiplatelet agents, requiring surgery. No obvious source of bleeding was identified (table 1).