

# Distribution and Origin of the Basement Membrane Component Perlecan in Rat Liver and Primary Hepatocyte Culture

Pierre-Yves Rescan,\* Olivier Loréal,\*  
John R. Hassell,† Yoshihiko Yamada,‡  
André Guillouzo,\* and Bruno Clément\*

Unité de Recherches Hépatologiques, INSERM U49, Hôpital Pontchaillou,\* Rennes, France; Department of Ophthalmology, University of Pittsburgh,† Pittsburgh, Pennsylvania, and Laboratory of Developmental Biology, National Institute of Dental Research, National Institutes of Health,‡ Bethesda, Maryland

**Basement membranes contain three major components (ie collagen IV, laminin, and the heparan sulfate proteoglycan termed perlecan). Although the distribution and origin of both collagen IV and laminin have been well documented in the liver, perlecan has been poorly investigated, so far. We have studied the distribution and cellular origin of perlecan in rat livers in various conditions as well as in hepatocyte primary culture. By immunolocalization in both adult and 18-day-old fetal liver, perlecan was found in portal spaces, around central veins, and throughout the lobule. Immunoelectron microscopy revealed its presence at the level of basement membranes surrounding bile ducts and blood vessels, and in the space of Disse discontinuously interacting with hepatocyte microvilli. Precursors of perlecan were detected in the rough endoplasmic reticulum of bile duct cells and both vascular and sinusoidal endothelial cells. Both hepatocytes and Ito cells were negative. Northern-blot analysis confirmed the lack of appreciable expression of perlecan in hepatocytes isolated from either fetal or adult livers. In 18-month-diethylnitrosamine-treated rat liver, perlecan was abundant in neoplastic nodules. Electron microscopic investigation revealed an almost continuous layer of perlecan in the space of Disse and intracellular staining in sinusoidal endothelial cells, only. Perlecan mRNAs were detectable in malignant nodules, and absent in hepatocytes from nontumorous areas. Hepatocytes expressed high levels of perlecan mRNAs only when put in culture. This**

**expression was reduced in conditions that allow improvement of hepatocyte survival and function (ie addition of corticoids, dimethylsulfoxide or nicotinamide to the medium, or in coculture with liver epithelial cells from biliary origin). Immunolocalization by light and electron microscopy showed that deposition of the proteoglycan occurred in coculture, in basement membranelike structures located around hepatocyte cords. In vitro attachment assay of hepatocytes on purified perlecan substrate indicated that these cells may interact with the proteoglycan through integrins which belong to the  $\beta_1$  family. These data suggest that deposition of perlecan in the space of Disse requires cellular cooperation. This article on perlecan, the third major component of hepatic basement membranes, shows a unique cellular origin in the liver and, as found for both collagen IV and laminin, an expression in adult hepatocytes when placed in culture. (Am J Pathol 1993, 142:199–208)**

Proteoglycans are macromolecules consisting of a core protein with covalently bound glycosaminoglycan side chains.<sup>1,2</sup> They are widely distributed either anchored in the cell membrane<sup>3–5</sup> or associated with extracellular matrices.<sup>6,7</sup> A large heparan sulfate proteoglycan termed perlecan<sup>8</sup> is the major proteoglycan in various basement membranes—the sheet-like extracellular matrices that underlie epithelial, endothelial, nerve, and fat cells. Perlecan extracted from the Engelbreth–Holm–Swarm (EHS) tumor has a large core protein ( $M_r = 400,000$ ) with 3 or 4 heparan sulfate chains projecting from a globule at one end.<sup>9,10</sup> Smaller heparan sulfate proteoglycans have been isolated (eg from the glomerular

Supported by the Institut National de la Santé et de la Recherche Médicale and by grants from the International Coordinating Council for Cancer Research and the Philippe Foundation.

Accepted for publication June 24, 1992.

Address reprint requests to Bruno Clément, Ph.D., INSERM U49, Hôpital Pontchaillou, 35033 Rennes, France.

basement membrane), but they are likely degradation or alternatively spliced forms.<sup>11</sup> The primary structure of the core protein of perlecan has been determined by cDNA sequencing and showed homologies to portions of the laminin A chain, the repeats characteristic to those of neural cell adhesion molecule (N-CAM), often found in the immunoglobulin super family, and low-density lipoprotein-receptorlike domains.<sup>12,13</sup> Perlecan has a variety of functions. It creates ionic charge barrier on the surface of basement membrane,<sup>7</sup> interacts with other basement membrane components,<sup>14</sup> and has been implicated in cell adhesion through plasma membrane-associated proteins.<sup>15,16</sup>

Despite the biological importance of perlecan, little is known about the cellular sources and biosynthesis of this basement membrane component in several tissues, including liver. The distribution of perlecan in several tissues does not strictly match with those of laminin and collagen IV,<sup>17</sup> thus suggesting that basement membrane components might originate from different sources and/or be uncoordinately expressed. Recent studies with immunoelectron microscopy and *in situ* mRNA hybridization of matrix proteins have shown that hepatocytes interact with small clusters of laminin and collagen IV that are produced by both adjacent endothelial cells and Ito cells.<sup>18,19</sup> Interestingly, hepatocytes may express collagen IV and/or laminin in both the developing liver and following a variety of injuries in the adult, as well as early in culture.<sup>18,20-22</sup>

We have studied the distribution and origin of perlecan in adult and fetal rat livers and in hepatocarcinoma induced by diethylnitrosamine treatment. We show that, whatever the situation, perlecan is produced by endothelial cells *in vivo*, and both Ito cells and hepatocytes are negative. However, when put in primary culture, hepatocytes become perlecan producers and interact *via*  $\beta_1$ -integrin.

## Materials and Methods

### Reagents

Perlecan was purified from the EHS tumor and antibodies raised against the core protein of perlecan as described.<sup>23</sup> Perlecan cDNA was a 2.2 kb (BPG-7) Eco-RI fragment cloned from a EHS cell library.<sup>12</sup> Albumin cDNA was from murine origin.<sup>24</sup> Monoclonal anti-human  $\beta_1$ -integrin antibodies were kindly provided by Dr. K. Yamada, National Institute of Dental Research (Bethesda, MD).

### Liver Sample and Cell Cultures

Normal adult livers were obtained from male Sprague-Dawley rats weighing 180 to 200 g and

fetal livers from 18-day-old gestation Sprague-Dawley rats. Hepatocytes were isolated by the two-step perfusion collagenase method<sup>25</sup> and plated in a mixture of 75% minimum essential medium (MEM) and 25% medium 199 containing 10  $\mu$ g/ml bovine insulin, 0.2% bovine serum albumin, and 10% fetal calf serum. After 4 hours, the medium was removed and the cells subsequently maintained in serum-free medium containing (or not)  $7 \times 10^{-6}$  M hydrocortisone hemisuccinate and supplemented with either 2% dimethylsulfoxide (DMSO) or 25 mM nicotinamide.<sup>26,27</sup> Co-cultures were set up 4 hours after hepatocyte seeding by adding rat liver epithelial cells (RLECs) derived from 10-day-old Fisher rats in the complete medium used to plate hepatocytes containing 10% fetal calf serum.<sup>28,29</sup> Serum-free medium supplemented with  $7 \times 10^{-6}$  M hemisuccinate hydrocortisone was renewed after 24 hours and every day thereafter. For Northern-blot analysis, cocultured hepatocytes were selectively detached from RLECs by incubation in a calcium-free HEPES-buffered collagenase solution (pH 7.6) for 10 minutes.<sup>29</sup>

Hepatocytes from diethylnitrosamine-treated rats were obtained as previously described.<sup>30</sup> Briefly, female Sprague-Dawley rats received three doses of diethylnitrosamine (25 mg/kg) 24 hours, 48 hours, and 72 hours after a two-thirds hepatectomy. After 18 months, both malignant nodules and hepatocytes from nontumorous areas were isolated by collagenase perfusion and collected separately after passage through gauze and low-speed centrifugations.

### Fixation and Immunohistochemistry

Normal adult and diethylnitrosamine-treated rat livers were rapidly washed by perfusion with phosphate-buffered saline (PBS) for 1 minute, then perfused with a 4% paraformaldehyde solution buffered with 0.1 M sodium cacodylate (pH 7.4) for 15 minutes, then cut in small pieces. Rat fetal livers were cut in fragments and immediately immersed in the same fixative solution for 4 hours. Samples were washed with PBS, soaked in PBS containing 10% glycerol for 1 hour and then frozen in liquid nitrogen-cooled isopentane. Eight  $\mu$  cryostat sections were routinely prepared.

Cultured hepatocytes were briefly washed with PBS for 1 minute, then fixed with a 4% paraformaldehyde solution buffered with 0.1 M sodium cacodylate (pH 7.4) for 45 minutes. Cells were washed three times, 15 minutes each, in PBS at 4 C then processed for perlecan immunolocalization.

Perlecan was visualized using either indirect immunofluorescence or immunoperoxidase

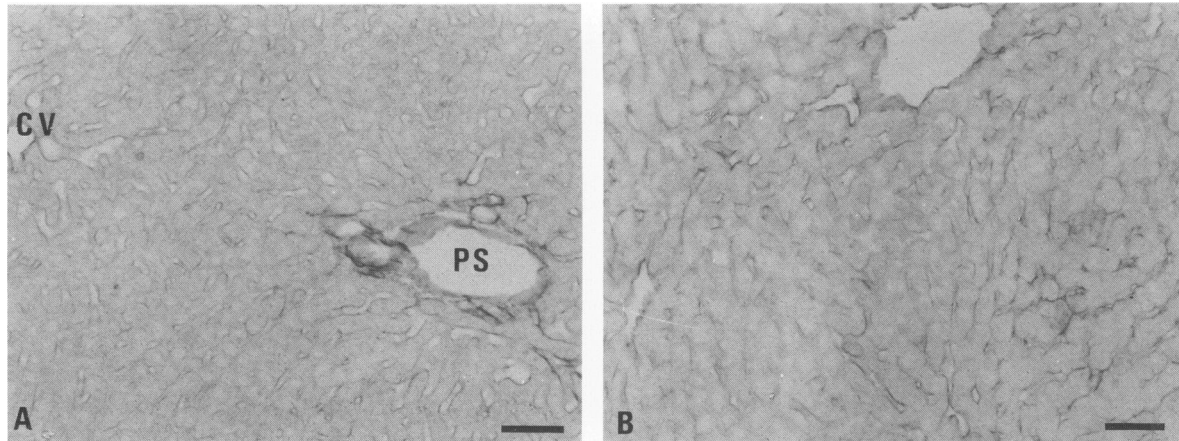


Figure 1. Immunoperoxidase localization of perlecan in normal adult (A) and 18-month-diethylnitrosamine-treated rat livers (B). PS, portal space; CV, central vein. Bars = 100  $\mu$  ( $\times 110$ ).

method.<sup>31</sup> Briefly, cryostat sections and cultured cells were incubated with 0.2% saponin in PBS at room temperature for 1 hour prior to their incubation with anti-perlecan antibodies for 1 hour. After three washes in PBS, samples were incubated with either fluorescein- or peroxidase-labeled sheep anti-rabbit immunoglobulins. All antibody solutions and washing solutions contained 0.2% saponin. For electron microscopic examination, immunoperoxidase-labeled samples were subsequently postfixed with 2.5% glutaraldehyde buffered with 0.1 M sodium cacodylate (pH 7.4) for 4 minutes at 4 C then incubated in 0.2 M glycine (pH 10) for 15 minutes. Staining was visualized with 3,3'-diaminobenzidine/ $H_2O_2$ . Then, samples were postfixed in 1% osmium tetroxide buffered with 0.1 M cacodylate buffer for 30 minutes, dehydrated in ethanol, and embedded in Epon. Controls were first incubated with normal immunoglobulins, or directly placed in the medium used to reveal peroxidase activity.

### Northern-Blot Analysis

Total RNAs were extracted by the guanidium-thiocyanate cesium chloride method.<sup>32</sup> The parietal yolk sac cell line, isolated from a rat carcinoma known to produce high levels of perlecan, was used as a positive control for Northern-blot hybridization with perlecan cDNA probe. RNAs (10  $\mu$ g per lane) were resolved by electrophoresis on a 1% agarose slab gel buffered with 10 mM sodium phosphate (pH 7.4) containing 1.1 M formaldehyde and transferred onto nitrocellulose sheets. Filters were hybridized in 3  $\times$  standard saline citrate (SSC), 0.2% polyvinylpyrrolidone, 0.2% Ficoll, 0.1% sodium dodecyl sulfate (SDS), 0.1% bovine albumin, and 50% formamide.

The filters were washed twice with 3  $\times$  SSC, 0.1% SDS for 2 minutes at room temperature, and then twice with 1  $\times$  SSC, 0.1% SDS for 20 minutes at 65 C. The hybridized filters were exposed to Kodak X-Omat film at -80 C.

### Inhibition of Hepatocyte Adhesion

Perlecan (2  $\mu$ g in 100  $\mu$ l of serum-free MEM) was coated on 0.32 cm<sup>2</sup> well tissue-culture plates at 37 C in a 5% CO<sub>2</sub> atmosphere. After 2 hours, 3% bovine albumin in MEM was added to a final concentration of 1.5% for a further 30 minutes to prevent unspecific binding of cells. Medium was removed and plates were immediately used for attachment assay. Prior to

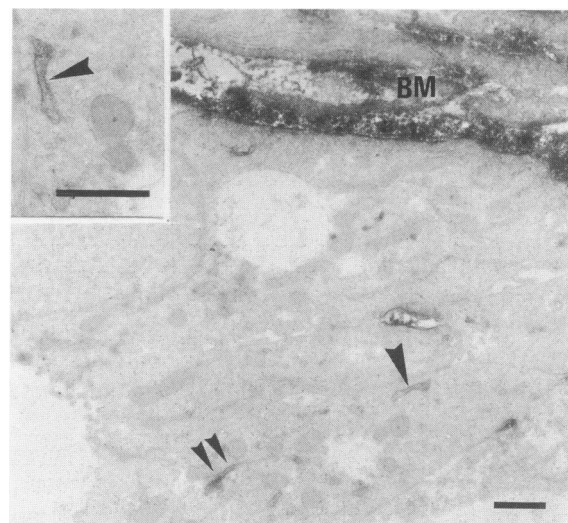
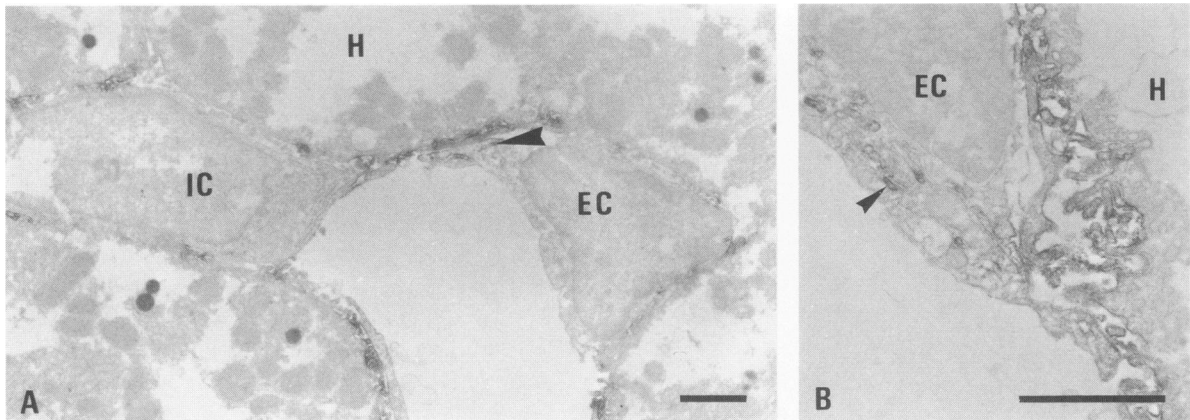


Figure 2. Electron microscopic immunolocalization of perlecan in normal adult liver. Perlecan is present extracellularly in basement membrane (BM) and intracellularly in the rough endoplasmic reticulum (arrows) of cells that form a canal of Hering. Bars = 1  $\mu$  ( $\times 7,350$ ; inset,  $\times 12,700$ ).



**Figure 3.** Electron microscopic immunolocalization of perlecan in normal adult (A) and 18-day-old fetal liver (B). In the sinusoid, perlecan is present close to hepatocyte microvilli and intracellularly in the rough endoplasmic reticulum (arrow) of endothelial cells (EC). Both hepatocytes (H) and an Ito cell (IC) are negative. Bars = 1  $\mu$  (A  $\times 8,700$ ; B,  $\times 19,000$ ).

their addition to perlecan-coated well tissue-plates, hepatocytes (20,000 cells/well) were incubated with various concentrations of monoclonal anti- $\beta_1$  integrin antibodies or  $\text{Ca}^{++}$ - $\text{Mg}^{++}$ -free PBS for 10 minutes. Thirty minutes after hepatocyte seeding, media containing unattached cells were removed and plates were gently washed twice with 0.1 M PBS (pH 7.4). The percentage of attached cells was measured by determining the lactate dehydrogenase activity in both media and cell layers using the M.A.-kit Roche (LDH opt. DGKC). Because monoclonal antibodies were directed against human  $\beta_1$ -integrin, hepatocytes isolated from a normal adult human liver were used for this assay.

## Results

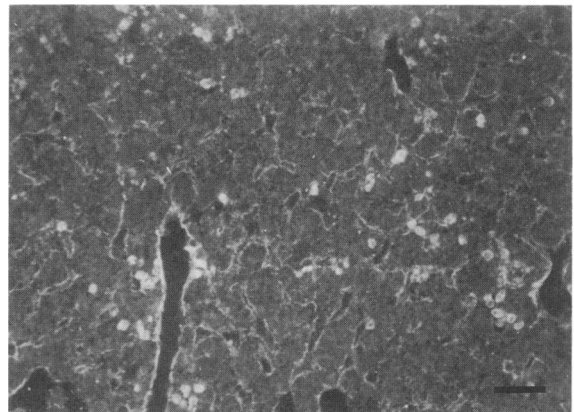
### *Immunolocalization of Perlecan in Rat Liver*

In the normal adult rat liver, immunoperoxidase analysis revealed that perlecan was abundant in portal spaces and formed an almost continuous layer in the sinusoids (Figure 1A). At the ultrastructural level, perlecan was detected in basement membranes surrounding bile ducts and blood vessels (Figure 2). In the space of Disse, electron-dense deposits were found close to hepatocyte microvilli (Figure 3A). Perlecan was localized intracellularly in the rough endoplasmic reticulum of vascular endothelial cells, bile duct cells, and cells that form the canal of Hering (Figure 2). In addition, sinusoidal endothelial cells, but neither hepatocytes nor Ito cells, also exhibited positive rough endoplasmic reticulum for perlecan (Figure 3). In controls, neither extracellular nor intracellular staining was observed, except in a few

remaining blood cells that contained endogenous peroxidase (data not shown).

In 18-day-old rat fetal liver, perlecan was localized by immunofluorescence mainly around blood vessels and bile ducts (Figure 4). Perlecan formed a continuous layer around clusters of hepatocytes. Staining intensity was weaker in the fetus compared with that in the adult. Immunoelectron microscopy confirmed that perlecan interacted with hepatocytes (Figure 3B). Intracellular labeling was restricted to bile duct cells and vascular and sinusoidal endothelial cells (Figure 3B). Both hepatocytes and Ito cells were constantly negative.

After 18 months, diethylnitrosamine-treated rats developed neoplastic lesions and hepatocellular carcinoma. By light microscopy, perlecan was found in neoplastic nodules (Figure 1B) and around pseudoacinar structures. Electron microscopic investigation revealed an almost continuous layer of



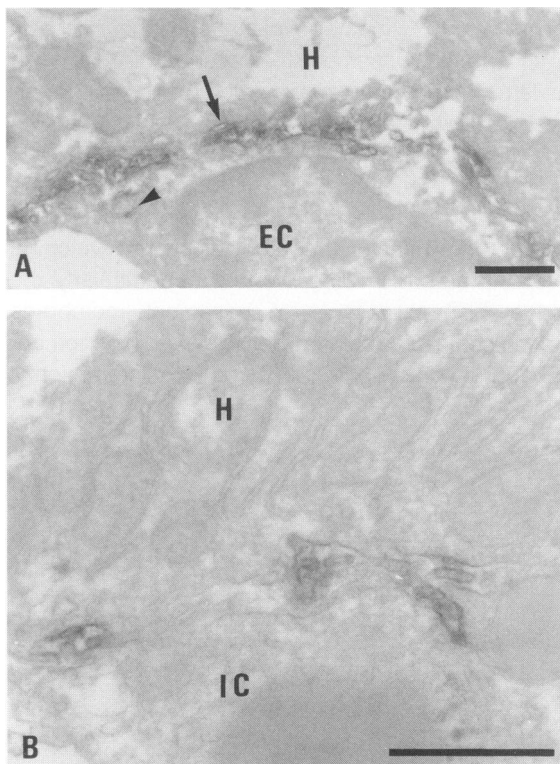
**Figure 4.** Immunofluorescent localization of perlecan in a 18-day-old fetal liver. Bar = 100  $\mu$  ( $\times 110$ ).

perlecan in the space of Disse and intracellular staining in sinusoidal endothelial cells (Figure 5A). Both Ito cells and hepatocytes lacked intracellular staining for perlecan (Figure 5B).

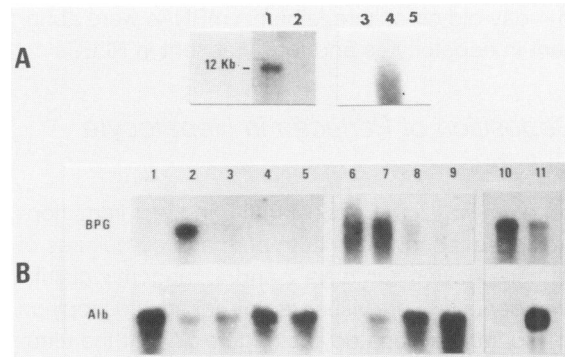
### Perlecan Gene Expression

Northern-blot analysis confirmed immunoelectron findings. Freshly isolated hepatocytes from both adult and an 18-day-old fetus did not contain detectable perlecan mRNAs (Figure 6A, lanes 2 and 3), whereas rat parietal yolk sac cells used as a positive control contained high levels of 12 kb perlecan mRNA species (Figure 6A, lane 1). Perlecan mRNAs were detectable in malignant nodules from diethylnitrosamine-treated rat livers (Figure 6A, lane 4) and absent in hepatocytes from nontumorous areas (Figure 6A, lane 5).

When normal adult hepatocytes were cultured in standard conditions, they began to produce perlecan mRNAs. In the absence of hydrocortisone hemisuccinate, perlecan mRNAs were detectable as early as 24 hours after cell seeding and became abundant after 48 hours (Figure 6B, lane 2). The



**Figure 5.** Electron microscopic immunolocalization of perlecan in a 18-month-diethylnitrosamine-treated rat liver. In the sinusoid, perlecan is abundant in the space of Disse (arrow). Intracellularly perlecan is detectable in the rough endoplasmic reticulum (arrowhead) of endothelial cells (EC), but not in hepatocytes (H) and Ito cells (IC). Bars = 1  $\mu$  (A,  $\times 10,200$ ; B,  $\times 21,800$ ).



**Figure 6.** Northern-blot analysis. (A) The steady-state level of perlecan mRNAs was studied in hepatocytes from 18-day-old fetal (lane 2) and normal adult livers (lane 3), and in nodular formations (lane 4) and hepatocytes from nontumorous areas (lane 5) in 18-month-diethylnitrosamine-treated rat livers. The parietal yolk sac tumor (lane 1) was used as a positive control. (B) The steady-state level of perlecan mRNAs (BPG) was studied in adult hepatocyte primary cultures maintained in serum-free medium without (lanes 2 and 6) or with hydrocortisone hemisuccinate (lanes 3 and 7) and supplemented with 2% DMSO (lanes 4 and 8) or 25 mM nicotinamide (lanes 5 and 9). Lane 1, freshly isolated hepatocytes; lanes 2 to 5, 2-day-old pure cultures; lanes 6 to 9, 4-day-old pure cultures; lanes 10 and 11, 4-day-old co-cultures (lane 10, RLECs; lane 11, hepatocytes). The same blots were used for hybridization with an albumin cDNA probe (Alb).

steady-state perlecan mRNA level was not significantly changed after 4 days (Figure 6B, lane 6). In the presence of  $7 \times 10^{-6}$  M hydrocortisone hemisuccinate, the steady-state perlecan mRNA level was lower in 2-day-old culture compared with that in untreated cells (Figure 6B, lane 3). However, the differences were only transient. No significant change was found between untreated and hydrocortisone-treated cultures after 4 days (Figure 6B, lane 7). When media were supplemented with 2% DMSO perlecan mRNAs were only slightly detectable, even in 4-day-old cultures (Figure 6B, lanes 4 and 8). In the presence of 25 mM nicotinamide, perlecan mRNAs were almost undetectable (Figure 6B, lanes 5 and 9). Only a 10-day exposure of the filter allowed a slight detection of perlecan mRNA species (data not shown). In 4-day-old co-cultures, both hepatocytes and RLECs were found to contain perlecan mRNAs, the steady-state perlecan mRNA level being higher in RLECs (Figure 6B, lanes 10 and 11). Filters were subsequently washed and hybridized with a  $^{32}$ P-labeled albumin cDNA probe (Figure 6B). In conventional conditions, the steady-state albumin mRNA level was found to dramatically decrease in 2- and 4-day-old primary hepatocyte cultures compared with freshly isolated cells. The decrease was slightly prevented in the presence of hydrocortisone. When media were supplemented with either 2% DMSO or 25 mM nicotinamide, the steady-state albumin mRNA levels in 2- and 4-day-old hepatocyte cultures were similar to that in freshly isolated cells.

In 4-day-old co-culture, albumin mRNAs were abundant in hepatocytes and totally absent in RLECs.

### *Deposition of Perlecan in Hepatocyte Cultures*

Perlecan was localized using the indirect immunoperoxidase technique in both pure and co-cultures of rat hepatocytes. On days 2 and 4, randomly distributed deposits were visualized by light microscopy on the surface of hepatocytes (Figure 7A). At the ultrastructural level, electron-dense deposits were found extracellularly sparsely located on the surface of hepatocytes and intracellularly in the endoplasmic reticulum of all cultured hepatocytes (data not shown).

Unlike its distribution in pure culture, intense staining for perlecan was found in 4-day-old co-culture of hepatocytes and RLECs, specifically around hepatocyte cords (Figure 7B). At the ultrastructural level, perlecan was detected within a basement membranelike structure located close to the plasma membrane of hepatocytes at the level of intima contacts with RLECs (Figure 8A). The endoplasmic reticulum of RLECs was strongly labeled, whereas small quantities of perlecan were found in that of hepatocytes (Figure 8B). In pure RLEC cultures used as control, perlecan was detected intracellularly in the rough endoplasmic reticulum of the cells, but not extracellularly (data not shown).

### *Inhibition of Hepatocyte Attachment to Perlecan by Anti- $\beta_1$ -Integrin Antibodies*

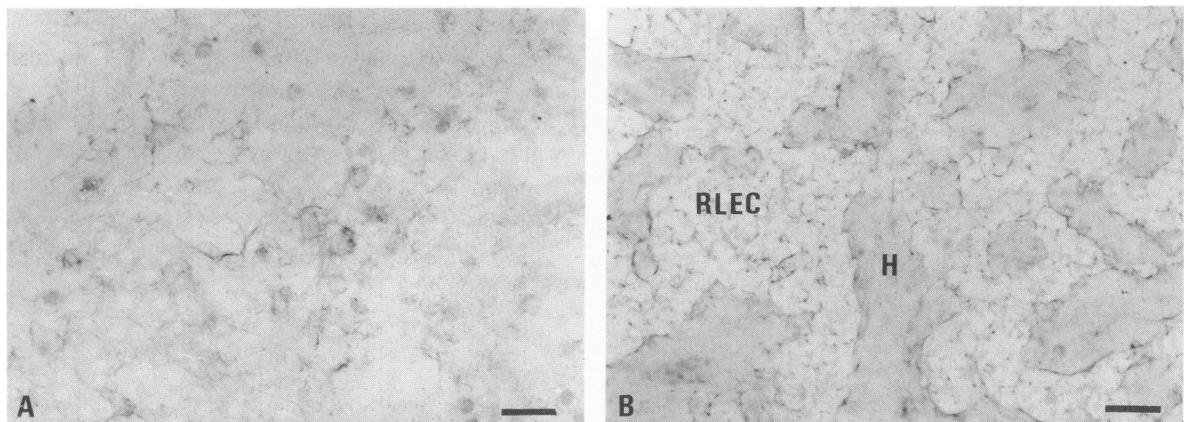
Human hepatocytes were incubated with monoclonal anti- $\beta_1$ -subunit of integrin antibodies, then assayed for their attachment to perlecan substrate

(Figure 9). Attachment of hepatocytes was inhibited in a dose-dependent manner by monoclonal antibodies. At a concentration of 400  $\mu\text{g/ml}$ , the antibodies inhibited adhesion of hepatocytes by 75% when compared with controls.

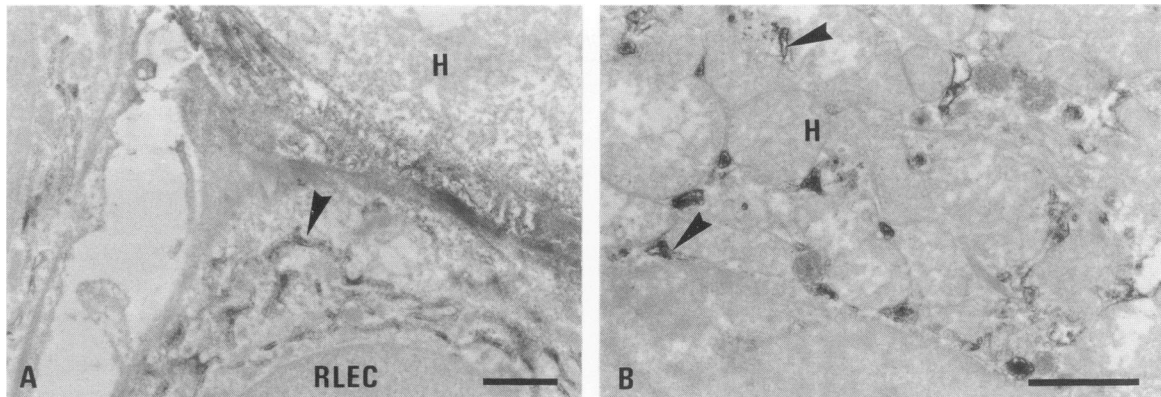
### *Discussion*

Proteoglycans are a diverse class of macromolecules, some of which anchored in cell membrane and others associated with extracellular matrices. We have investigated the expression of perlecan, the major basement membrane proteoglycan in the liver, because this organ exhibits unique patterns of basement membrane distribution depending on its functional stage. Indeed, unlike most epithelia, normal adult hepatocytes lack a continuous basement membrane. Our study confirms previous immunogold localization of heparan sulfate proteoglycan in the space of Disse<sup>33</sup> and extends the particular feature of laminin and collagen IV distribution in the liver to perlecan. Indeed, although not forming a complete meshwork basement membrane components interact with hepatocyte microvilli.<sup>18,31,34,35</sup> Lack of basement membrane formation could be related to uncoordinated expression of corresponding genes.<sup>21,36</sup> Another explanation is the synthesis of incomplete basement membrane proteins, such as laminin, that could modify their biological properties, including self-assembly and interactions with specific receptors.

Basement membranelike structures containing laminin and collagen IV<sup>20</sup> and perlecan (this study) interact with immature hepatocytes in the developing liver. As shown in other tissues,<sup>37</sup> particularly the kidney,<sup>38,39</sup> expression of basement membrane genes is highly regulated both spatially and temporally during development. It is likely that interaction of



**Figure 7.** Light microscopic immunolocalization of perlecan in 4-day-old rat hepatocyte pure (A) and co-cultures with RLECs (B). H, hepatocytes. Bars = 100  $\mu$  ( $\times 120$ ).



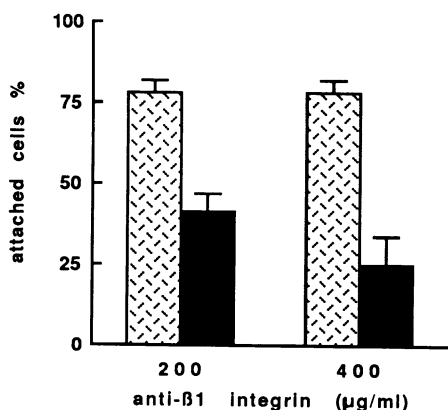
**Figure 8.** Electron microscopic immunolocalization of perlecan in 4-day-old hepatocyte co-cultures. Perlecan is present extracellularly between an hepatocyte (H) and RLECs, and intracellularly in the rough endoplasmic reticulum (arrows) of both cells. Bars = 1  $\mu$  (A,  $\times 9,500$ ; B,  $\times 14,700$ ).

basement membrane components with immature hepatocytes plays a major role during liver differentiation. *In vitro* studies have shown that liver-specific functions and transcription of liver-specific genes are maintained several days when hepatocytes are cultured on a reconstituted basement membrane.<sup>40</sup> However, the influence of perlecan on hepatocyte functions is unclear. Proteoglycans (eg chondroitin sulfate and dermatan sulfate proteoglycans, and liver-derived heparin) have been shown to improve electrical and dye coupling slightly, as well as the level of gap junction protein mRNAs in cultured hepatocytes.<sup>41</sup> In contrast, Caron<sup>42</sup> failed to detect a significant effect of perlecan on the steady-state albumin mRNA level in cultured adult hepatocytes.

Diethylnitrosamine treatment results in an increase in perlecan deposition in altered areas. Other base-

ment membrane components, including collagen IV and laminin, are also abundant in the space of Disse during hepatocarcinogenesis.<sup>21,43</sup> It has been shown that basement membranes play a role in the transformation process.<sup>37</sup> Further studies should address whether this is relevant to liver cells. Interestingly, it has been shown *in vitro* that purified basement membrane components modulate proliferation of both transformed epithelial liver cells<sup>44</sup> and rat and human hepatoma cells (Levavasseur et al, unpublished data).

Whatever the situation, immunoelectron studies indicate that the major sources of perlecan are bile duct cells and vascular endothelial cells in portal spaces, and endothelial cells in the sinusoids. Other cells (eg Ito cells and hepatocytes) lacked precursors of perlecan. It cannot be ruled out that these cells could express perlecan below the threshold of detection by immunohistochemistry. However, perlecan mRNAs were not detectable by Northern-blot in hepatocyte and Ito cell populations purified from normal liver, thus suggesting that its expression, if any, might be biologically not appreciable. Increased steady-state perlecan mRNA levels in nodules from diethylnitrosamine-treated rat livers were likely related to endothelial cells, which were positive by immunoelectron microscopy. Endothelial cells could play a central role in basement membrane formation during liver injury. This particular cell type produces laminin and collagen IV<sup>18,45</sup> and undergoes striking morphological alterations during the early steps of sinusoidal fibrogenesis, particularly a dramatic decrease in both the size and number of fenestrae.<sup>46</sup> That Ito cells appeared negative for perlecan is unexpected. Indeed, besides their role in the storage of vitamin A, extracellular matrix protein synthesis is likely a major function of Ito cells. Because these



**Figure 9.** Inhibition of hepatocyte attachment to perlecan by anti- $\beta_1$ -integrin monoclonal antibodies. Tissue-culture plates ( $0.32 \text{ cm}^2$  well) were coated with 2  $\mu\text{g}$  of perlecan purified from the EHS tumor. Anti- $\beta_1$ -integrin antibodies were mixed with hepatocytes for 10 minutes before seeding. Control cells were first incubated with  $\text{Ca}^{2+}$ - $\text{Mg}^{2+}$ -free PBS then assayed for their adhesion on perlecan. Each assay was conducted in duplicate in two independent experiments. ■, assay; ▨, control.

**Table 1.**  
*Immunoelectron Localization of Basement Membrane Components in Rat Livers*

	Space of Disse	Ito cells	Endothelial cells	Hepatocytes			
				Adult	Fetal	DN	In vitro
Collagen IV	±	+	+	-	-	-	+
Laminin	±	+	+	-	+	+	+
Entactin/nidogen	±	+	+	-	ND	ND	+
Perlecan	+	-	+	-	-	-	+

Antigens were either absent (-) or present (±, weak or +, strong staining) extracellularly in the space of Disse and intracellularly in the rough endoplasmic reticulum of the cells. DN, 18-month-diethylnitrosamine-treated rat livers. ND, not determined. Taken from refs. 18, 20-22, and 31, and Loréal et al. (unpublished data).

cells express collagen IV and laminin, this suggests that basement membrane genes are not coordinately regulated. Recent Northern-blot analyses support this hypothesis. Freshly isolated Ito cells were found to contain high levels of procollagen  $\alpha_1$ (IV) and laminin B2 mRNA, whereas perlecan and laminin A and B1 mRNAs were almost undetectable<sup>47,48</sup> (Loréal et al., unpublished data).

Although not producing appreciable amounts of perlecan *in vivo*, hepatocytes express this proteoglycan after a few hours in culture. Similar observations have been reported for other basement membrane components, including  $\alpha_1$ (IV) procollagen,<sup>22</sup> laminin B1 and B2 chains,<sup>21</sup> and entactin genes (Loréal et al., unpublished data). The mechanisms responsible for this induction during their isolation and culture may represent an attempt for hepatocytes to adapt to an artificial environment. Another explanation is the relationship of basement membrane component expression with the cell cycle. Sequential activation of the proto-oncogenes (*c-fos*, *c-myc*, *jun* family, and *c-Ki-ras*), which are correlated with progression into the cell cycle, were described in hepatocytes following liver disruption and after a few hours in culture.<sup>49</sup> Whether expression of basement membrane genes is related to this activation and the entry of hepatocytes into the cell cycle is currently unknown. It is noteworthy that perlecan expression appears to be dramatically reduced in primary hepatocyte culture containing various factors (including corticoids, DMSO, and nicotinamide) that result in improvement of hepatocyte survival and function,<sup>26,27</sup> in the absence of cell proliferation.<sup>50</sup> That sinusoidal laminin increases in regenerating liver<sup>51</sup> and affinity of hepatocytes to this glycoprotein is enhanced in response to epidermal growth factor<sup>52</sup> sustain the hypothesis of a relationship between hepatocyte growth and basement membrane gene expression. Studies on perlecan expression during liver regeneration and in hepatocytes cultured in the presence of epidermal growth factor, pyruvate, and insulin, which allow hepatocytes to divide, should address this issue.

Deposition of perlecan within a basement membrane-like structure around hepatocytes occurs in co-culture only (ie following reestablishment of specific cell-cell interactions). This suggests that perlecan deposition requires cellular cooperation. The main source of perlecan in co-culture appears to be RLECs, hepatocytes being a lower producer of this component and rather a potent regulator of its aggregation within a basement membrane. Stabilization of both functions and specific membrane domains in co-culture could modulate perlecan deposition through specific receptors. We have previously shown that the core protein of perlecan interacted with hepatocytes through specific membrane-associated proteins.<sup>15</sup> Here we demonstrate that hepatocytes may also bind to perlecan using  $\beta_1$ -subunit of integrin. That multiple receptors are implicated in hepatocyte-perlecan interaction is not unique. It has been shown that this cell type binds to laminin through both  $\alpha_1\beta_1$ -integrin and the 32/67 kd laminin receptor.<sup>53,54</sup> Also an  $M_r = 80,000$  protein was found on the cell surface of hepatocytes interacting with collagen IV, laminin, and perlecan.<sup>16</sup> It is likely that these multiple mechanisms of hepatocyte-basement membrane interactions provide specific signals for tissue development and differentiation.

This study, together with those on collagen IV, laminin, and entactin/nidogen in the liver,<sup>18,20-22</sup> brings new insights into the role of liver cells in the formation of basement membrane components in the space of Disse in various physiopathological situations (Table 1). Both Ito and endothelial cells are the main sources of basement membrane components in normal and fibrotic livers, with hepatocytes being potent modulators of their deposition in the extracellular spaces. Interestingly, hepatocytes express the whole set of basement membrane components when put in culture and only laminin in fetal livers.

### Acknowledgments

We thank Dr. K. Yamada (National Institute of Dental Research) for the generous gift of the anti- $\beta_1$ -integrin antibodies and M. Rissel for preparing illustrations.



## References

1. Hassell JR, Kimura JH, Hascall VC: Proteoglycan core protein families. *Ann Rev Biochem* 1986, 55:539–567
2. Heinegard D, Sommarin Y: Proteoglycans: An overview. *Meth Enzymol* 1987, 114:305–319
3. Stow JL, Kjellen L, Unger E, Höök M, Farquhar MG: Heparan sulfate proteoglycans are concentrated on the sinusoidal plasmalemmal domain and in intracellular organelles of hepatocytes. *J Cell Biol* 1985, 100:975–980
4. Kjellen L, Pettersson I, Höök M: Cell-surface heparan sulfate: an intercalated membrane proteoglycan. *Proc Natl Acad Sci USA* 1981, 78:5371–5375
5. Mali M, Jaakkola P, Arvilommi AM, Jalkanen M: Sequence of human syndecan indicates a novel gene family of integral membrane proteoglycans. *J Biol Chem* 1990, 265:6884–6889
6. Hassell JR, Gehron-Robey P, Barrach HJ, Wilezek J, Rennard SI, Martin GR: Isolation of a heparan sulfate containing proteoglycan from basement membrane. *Proc Natl Acad Sci USA* 1980, 77:4494–4498
7. Kanwar YS, Hascall VC, Farquhar MG: Partial characterization of newly synthesized proteoglycans isolated from the glomerular basement membrane. *J Cell Biol* 1981, 90:527–532
8. Chakravarti S, Phillips SL, Hassell JR: Assignment of perlecan (heparan sulfate proteoglycan) gene to mouse chromosome 4. *Mam Genome* 1991, 1:270–272
9. Ledbetter SR, Tyree B, Hassell JR, Horigan EA: Identification of the precursor protein to basement membrane heparan sulfate proteoglycans. *J Biol Chem* 1985, 260:8106–8113
10. Laurie GW, Inoue S, Bing JT, Hassell JR: Visualization of the large heparan sulfate proteoglycan from basement membrane. *Am J Anat* 1988, 181:320–326
11. Klein DJ, Brown DM, Oegema TR, Brenchley PE, Anderson JC, Dickinson MAJ, Horigan EA, Hassell JR: Glomerular basement membrane proteoglycans are derived from a large precursor. *J Cell Biol* 1988, 106:963–970
12. Noonan D, Horigan E, Ledbetter S, Sasaki M, Yamada Y, Hassell JR: Identification of cDNA clones encoding different domains of the basement membrane proteoglycan. *J Biol Chem* 1988, 31:16379–16387
13. Noonan D, Fulle A, Valente P, Cai S, Horigan E, Sasaki M, Yamada Y, Hassell JR: The complete sequence of perlecan, a basement membrane heparan sulfate proteoglycan, reveals extensive similarity with laminin A chain, low density lipoprotein-receptor, and the neural cell adhesion molecule. *J Biol Chem* 1991, 34:22939–22947
14. Laurie GW, Bing JT, Kleinman HK, Hassell JR, Aumailley M, Martin GR, Feidmann JR: Localization of binding sites for laminin, heparan sulfate proteoglycan and fibronectin on basement membrane (type IV) collagen. *J Mol Biol* 1986, 189:205–216
15. Clément B, Segui-Real B, Hassell JR, Martin GR, Yamada Y: Identification of a cell surface-binding protein for the core protein of the basement membrane proteoglycan. *J Biol Chem* 1989, 264:12467–12471
16. Clément B, Yamada Y: A Mr 80K hepatocyte surface protein(s) interacts with basement membrane components. *Exp Cell Res* 1990, 187:320–323
17. Couchman JR: Heterogeneous distribution of a basement membrane heparan sulfate proteoglycan in rat tissues. *J Cell Biol* 1987, 105:1901–1916
18. Clément B, Rescan PY, Loréal O, Lehry D, Campion JP, Guillouzo A: Hepatocytes may produce laminin in fibrotic liver and in primary culture. *Hepatology* 1988, 8:794–803
19. Milani S, Herbst H, Schuppan D, Riecken EO, Stein H: Cellular localization of laminin gene transcripts in normal and fibrotic human liver. *Am J Pathol* 1989, 134:1175–1182
20. Rescan PY, Clément B, Grimaud JA, Guillois B, Strain AI, Guillouzo A: Participation of hepatocytes in the production of basement membrane components in human and rat liver during the perinatal period. *Cell Diff Dev* 1989, 26:131–144
21. Rescan PY, Clément B, Yamada Y, Segui-Real B, Baffet G, Guguen-Guillouzo C, Guillouzo A: Differential expression of laminin chains and receptor (LBP-32) in fetal and neoplastic hepatocytes compared to normal adult hepatocytes *in vivo* and in culture. *Am J Pathol* 1990, 137:701–709
22. Clément B, Rissel M, Guguen-Guillouzo C, Lebeau G, Guillouzo A: Types I and IV procollagen gene expression in cultured rat hepatocytes. *Coll Rel Res* 1988, 8:349–359
23. Hassell JR, Leyshon WC, Ledbetter SR, Tyree B, Suzuki S, Kato M, Kimata K, Kleinman HK: Isolation of two forms of basement membrane proteoglycans. *J Biol Chem* 1985, 260:8098–8105
24. Sargent TD, Wu JR, Sala-Trépat JM, Wallace RB, Reyes AA, Bunner J: The rat serum albumin gene: Analysis of cloned sequences. *Proc. Natl. Acad Sci USA* 1979, 76:3251–3260
25. Guguen-Guillouzo C, Guillouzo A: Methods for preparation of adult and fetal hepatocytes. *Isolated and Cultured Hepatocytes*. Edited by A Guillouzo, C Guguen-Guillouzo. Paris, Les Editions INSERM, -John Libbey, 1986, pp 1–12
26. Isom H, Georgoff I, Salditt-Georgieff M, Darnell JE: Persistence of liver-specific messenger RNA in cultured hepatocytes: Different regulatory events for different genes. *J Cell Biol* 1987, 105:2877–2885
27. Vandenberghe Y, Ratanasavanh D, Glaise D, Guillouzo A: Influence of medium composition and culture conditions on glutathione S-transferase activity in adult rat hepatocytes during culture. *In Vitro Cell Dev Biol* 1988, 24:281–288
28. Guguen-Guillouzo C, Clément B, Baffet G, Beaumont C, Morel-Chany E, Glaise D, Guillouzo A: Maintenance and reversibility of active albumin secretion by adult rat hepatocytes co-cultured with another liver epithelial cell type. *Exp Cell Res* 1983, 143:47–54

29. Fraslin JM, Kneip B, Vaulont S, Glaise D, Munnich A, Guguen-Guillouzo C: Dependence of hepatocyte-specific gene expression on cell-cell interactions in primary culture. *EMBO J* 1985, 4:2497-2491
30. Farber E, Cameron RG, Laishes B, Lin JC, Medline A, Ogawa K, Sout DB: Physiological and molecular markers during carcinogenesis. *Carcinogens: Identification and Mechanism of Action*. Edited by AC Griffin, RD Shaw. New York, Raven Press, 1978, pp 319-339
31. Clément B, Rissel M, Peyrol S, Mazurier Y, Grimaud JA, Guillouzo A: A procedure for light and electron microscopic intracellular immunolocalization of collagen and fibronectin in rat liver. *J Histochem Cytochem* 1985, 33:407-414
32. Chirgwin JM, Pryzbyla AE, McDonald RJ, Rutter WJ: Isolation of biologically active ribonucleic acid from sources enriched in ribonuclease. *Biochemistry* 1979, 18:5294-5299
33. Geerts A, Geuze HJ, Slot JW, Voss B, Schuppan D, Schellinck P, Wisse E: Immunogold localization of procollagen III, fibronectin and heparan sulfate proteoglycan on ultrathin frozen sections of the normal rat liver. *Histochemistry* 1986, 84:355-362
34. Martínez-Hernández A: The hepatic extracellular matrix. I. Electron immunohistochemical studies in normal rat liver. *Lab Invest* 1984, 51:57-75
35. Abrahamson DR, Caulfield JP: Distribution of laminin within rat and mouse renal, splenic, intestinal and hepatic basement membranes identified after the injection of heterologous anti-laminin IgG. *Lab Invest* 1985, 52:169-181
36. Kleinman HK, Ebihara I, Killen PD, Sasaki M, Cannon FB, Yamada Y, Martin GR: Genes for basement membrane proteins are coordinately expressed in differentiating F9 cells but not in normal adult murine tissue. *Dev Biol* 1987, 122:373-378
37. Timpl R, Dziadek M: Structure, development and molecular pathology of basement membrane. *Int Rev Exp Pathol* 1986, 29:1-12
38. Laurie GW, Horikoshi S, Killen PD, Segui-Real B, Yamada Y: In situ hybridization reveals temporal and spatial changes in cellular expression of mRNA for a laminin receptor, laminin and basement membrane (type IV) collagen in the developing kidney. *J Cell Biol* 1989, 109:1351-1362
39. Ekblom M, Klein G, Mugrauer G, Fecker L, Deutzmann R, Timpl R, Ekblom P: Transient and locally restricted expression of laminin A chain mRNA by developing epithelial cells during kidney organogenesis. *Cell* 1990, 60:337-346
40. Bissell DM, Arenson DM, Maher JJ, Roll FJ: Support of cultured hepatocytes by a laminin-rich gel. Evidence for a functionally significant subendothelial matrix in normal rat liver. *J Clin Invest* 1987, 79:801-812
41. Spray DC, Fujita M, Saez JC, Choi H, Wanatabe T, Hertzberg E, Rosenberg LC, Reid LM: Proteoglycans and glycosaminoglycans induce gap junction synthesis and function in primary liver cultures. *J Cell Biol* 1987, 105:541-551
42. Caron JM: Induction of albumin gene transcription in hepatocytes by extracellular matrix proteins. *Mol Cell Biol* 1990, 10:1239-1243
43. Albrechtsen R, Wewer UM, Thorgeirsson SS: De novo deposition of laminin positive basement membrane in vitro by normal hepatocytes and during hepatocarcinogenesis. *Hepatology* 1988, 8:538-546
44. Junker JL, Heine UI: Effect of adhesion factors fibronectin, laminin and type IV collagen on spreading and growth of transformed and control rat liver cells. *Cancer Res* 1987, 47:3802-3807
45. Maher J, McGuire D: Extracellular matrix gene expression increases preferentially in rat lipocytes and sinusoidal endothelial cells during hepatic fibrosis in vivo. *J Clin Invest* 1990, 86:1641-1648
46. Horn T, Christoffersen P: Sinusoidal endothelial cells: A SEM investigation of the fenestration in normal and diseased human liver. *Sinusoids in Human Liver. Health and Disease*. Edited by P Bioulac-Sage, C Balabaud. Rijswijk, Kupffer Cell Foundation, 1988, pp 189-206
47. Weiner FR, Giambone MA, Czaja MJ, Shah A, Annoni G, Takahashi S, Eghbali M, Zern MA: Ito-cell gene expression and collagen regulation. *Hepatology* 1990, 11:111-117
48. Loréal O, Levavasseur F, Rescan PY, Yamada Y, Guillouzo A, Clément B: Differential expression of laminin chains in hepatic lipocytes. *FEBS Lett* 1991, 290:9-12
49. Loyer P, Glaise D, Meijer L, Guguen-Guillouzo C: Oncogenes and cell cycle in adult hepatocytes. *Cellular and Molecular Aspects of Cirrhosis*. Edited by B Clément, A Guillouzo. Paris, Les Editions INSERM, John Libbey, 1992, pp 277-285
50. Fardel O, Loyer P, Morel F, Ratanasavanh D, Guillozo A: Modulation of multidrug resistance gene expression in rat hepatocytes maintained under various culture conditions. *Biochem Pharmacol* 1992 (in press)
51. Martínez-Hernández A, Delgado FM, Amenta PS: The extracellular matrix in hepatic regeneration: Localization of collagen types I, III, IV, laminin and fibronectin. *Lab Invest* 1991, 64:157-166
52. Kato S, Otsu K, Ohtake K, Kimura Y, Yashiro T, Suzuki T, Akamatsu N: Concurrent changes in sinusoidal expression of laminin and affinity of hepatocytes to laminin during rat liver regeneration. *Exp Cell Res* 1992, 198:59-68
53. Clément B, Segui-Real B, Savagner P, Kleinman HK, Yamada Y: Hepatocyte attachment to laminin is mediated through multiple receptors. *J Cell Biol* 1990, 110:185-193
54. Forsberg E, Paulsson M, Timpl R, Johansson S: Characterization of a laminin receptor on rat hepatocytes. *J Biol Chem* 1990, 265:6376-6381