

Review Article

Immune Response Regulation by *Leishmania* Secreted and Nonsecreted Antigens

Nuno Santarém,^{1,2} Ricardo Silvestre,^{1,2} Joana Tavares,^{1,2} Marta Silva,^{1,2} Sofia Cabral,^{1,2}
Joana Maciel,^{1,2} and Anabela Cordeiro-da-Silva^{1,2}

¹Departamento de Bioquímica, Faculdade de Farmácia, Universidade do Porto, Rua Aníbal Cunha 164, 4099-030 Porto, Portugal

²Instituto de Biologia Molecular e Celular (IBMC), Universidade do Porto, Rua do Campo Alegre 823, 4150-180 Porto, Portugal

Received 26 December 2006; Revised 6 March 2007; Accepted 29 April 2007

Recommended by Ali Ouassi

Leishmania infection consists in two sequential events, the host cell colonization followed by the proliferation/dissemination of the parasite. In this review, we discuss the importance of two distinct sets of molecules, the secreted and/or surface and the nonsecreted antigens. The importance of the immune response against secreted and surface antigens is noted in the establishment of the infection and we dissect the contribution of the nonsecreted antigens in the immunopathology associated with leishmaniasis, showing the importance of these panantigens during the course of the infection. As a further example of proteins belonging to these two different groups, we include several laboratorial observations on *Leishmania* Sir2 and LicTXNPx as excreted/secreted proteins and LmS3arp and LimTXNPx as nonsecreted/panantigens. The role of these two groups of antigens in the immune response observed during the infection is discussed.

Copyright © 2007 Nuno Santarém et al. This is an open access article distributed under the Creative Commons Attribution License, which permits unrestricted use, distribution, and reproduction in any medium, provided the original work is properly cited.

1. INTRODUCTION

Leishmaniasis are parasitic diseases, caused by protozoan parasites of the *Leishmania* genus, associated with significant morbidity and mortality in tropical and subtropical regions and in the Mediterranean basin. The disease has a wide range of clinical manifestations that depend not only on the infecting *Leishmania* species but also on the immune status of the host [1]. The most extensively studied leishmanial disease is the cutaneous form caused by *L. major* or *L. tropica* in the old world and *L. braziliensis* in the new world. It usually appears as a skin ulcer or dermal granuloma, which may take up to several months or years to heal [2]. With *L. braziliensis*, the infection may also spread to other cutaneous sites, like mucosal membranes giving origin to the mucocutaneous form of the disease. The most serious form of the disease is the visceral one that, if untreated, gives rise to a high mortality rate. It is characterized by fever, cachexia, hepatosplenomegaly, and hypergammaglobulinemia and is caused by members of the *L. donovani* complex (*L. donovani* in the old world, *L. infantum* in the Mediterranean basin and *L. infantum chagasi* in the New World) [3].

Leishmania is a digenetic protozoan that is transmitted to the mammalian host by sandflies of the genus *Phleboto-*

mus in the old world and *Lutzomyia* in the new world. In the alimentary tract of the insect vector, the parasite exists extracellularly as a flagellated motile form, the promastigote. During the insect blood meal, the infectious developmental form, metacyclic promastigotes, is injected into the dermis and phagocytosed by resident macrophages within which the parasite differentiates into the nonmotile amastigote form and multiplies. Moreover, other cells such as fibroblasts and dendritic cells may also harbour parasites [4]. The cycle is completed when the sandfly takes another blood meal recovering free amastigotes or infected macrophages.

During an infection, the parasites have a remarkable adaptative capacity as they are able to survive inside phagocytic cells. These cells are responsible for the microbicidal and antigen-presenting functions however they serve as a safe habitat for the parasite. The existence of inbred mice, which are either susceptible (Balb/c) or resistant to infection (C57BL/6, CBA, C3H.HeJ) has helped to elucidate the protective or nonprotective role of cytokine and T-helper cell subsets and also the role of different leishmanial antigens in the immune evasion mechanism. Thus, it became generally accepted that resistance against leishmaniasis is associated with the production of IL-12 by antigen presenting cells (APC) macrophages and dendritic cells, leading to the

differentiation and proliferation of the Th1-subset of CD4⁺ T-cells producers of IFN- γ . This will ultimately lead to the activation of parasite-infected macrophages that, through the induction of effector molecules as nitrogen and oxygen reactive species, will kill the intracellular parasites [5]. In contrast, failure to control the infection has been associated with the production of anti-inflammatory cytokines as IL-4, IL-10, IL-13 and TGF- β [6]. Given the ancient evolutionary divergence in *Leishmania* species, it is not surprising that the control of the different *Leishmania* driven diseases is related to different immunological properties. Hence, while in cutaneous leishmaniasis, IL-4 has been implicated in disease progression, in visceral leishmaniasis its importance has been ruled out [7]. In the latter, IL-10 has been shown to be the major immunosuppressive cytokine along with TGF- β . Overall, it suggests that it is the overshadowing of the Th2 response by a Th1 cell associated response that leads to the control of the infection [8]. Moreover, the real contribution of the humoral response is still under debate, however studies in different intracellular pathogens have shown that antibodies can also have a function in restricting the infection when the parasite is exposed to the extracellular milieu [9]. Consequently, in leishmaniasis, the induction of specific humoral responses to parasite antigens would, theoretically, be able to neutralize the parasite whether as free promastigotes, after the inoculum, or as amastigotes, when released from the infected macrophages, contributing to develop a protective response [10]. However, until now, no effective vaccine against human leishmaniasis is available for clinical use [3].

Leishmania parasites inside their hosts do not behave inertly. Rather, the virulence related to their pathology seems to be linked to an induced lack of immune response control. The parasite actively secretes proteases and other molecules that affect host immune system (cells and cytokines) facilitating the infection process. In addition, the parasite possesses intracellular nonsecreted antigens, members of conserved protein families, which are believed to contribute to the chronic immunopathology, observed in leishmaniasis. Here, we review these two groups of relevant parasite molecules, illustrated with laboratory observations of proteins belonging to the secreted and nonsecreted groups of antigens. Finally, we discuss their differential role in *Leishmania* infection and persistence as well in the development of a protective immune response.

1.1. The importance of the secreted versus nonsecreted antigens

Leishmania virulence has been explained using two different groups of parasite molecules, the secreted and surface and the intracellular molecules [11]. This model proposes that the secreted and surface molecules will be mostly important for the establishment of infection, protecting the parasite from the early action of the host immune system, acting as invasive/evasive determinants. According to this model, the intracellular molecules will be ultimately responsible for the disease phenotype [11].

1.2. Surface and secreted molecules

The secreted proteins have distinct functions during *Leishmania* infection. First, they play a role in the establishment of the infection [12] in conjunction with important elements existent in the saliva of the sandfly vector [13, 14]. In a second phase, they contribute to the maintenance of the infection by interfering with the macrophagic microbicidal functions, cytokine production, antigen presentation, and effector cells activation. This is achieved by repression of gene expression, post-translation protein modification or degradation, and by activation of suppressive pathways and molecules [15]. This macrophagic anergy enables the continuous multiplication of the amastigote form. The bulk of the knowledge on surface and secreted molecules of *Leishmania* is focused on lipophosphoglycan (LPG), on the promastigote surface protease named glycoprotein 63 (gp63), glycosylinositol phospholipids (GIPLs), cysteine peptidases and on a few others like β -mercaptoethanol activated proteases, acid phosphatases and chitinases. The importance of some of these molecules in the establishment of the infection is well documented [15, 16], but the real contribution of the secreted molecules remains elusive due to the difficulty of the intramacrophagic studies.

After entrance into a susceptible mammalian host, the *Leishmania* promastigotes are targeted by the host immune system. Serum components, like the complement system represent the first challenge following entrance into the bloodstream. Procyclic promastigotes are highly susceptible to complement action, unlike the metacyclic that can avoid complement mediated lysis [17]. This remarkable difference is mostly due to the surface molecule in *Leishmania*, the LPG. Composed mainly of repetitive units of a disaccharide and a phosphate, LPG is linked to the membrane by a glycosylphosphatidylinositol anchor [18]. The LPG is longer in metacyclic promastigotes preventing the attachment of C5b-C9 subunits of the complement complex avoiding its lytic action [17]. The relevance of LPG is not limited to complement resistance. Its importance is stated by several studies using either purified LPG or mutant strains. The LPG is implicated in several processes including the binding to the epithelial cells of the sandfly midgut [19], receptor mediated phagocytosis of macrophages through the CR3/CR1 ligand or the manose-fucose receptor (in conjunction with gp63) [20, 21], toll-like receptor 2 signalling [22], stimulation of NK cells [23], inhibition of phagosome-endosome fusion [24–26], and inhibition of phagosome-derived superoxide [27]. Several attempts to use LPG to confer protection were unproductive [28, 29]. Constitutively shed by several *Leishmania* species, the LPG is the paradigm molecule referred to as evasive and invasive. After the initial steps of infection, LPG is downregulated being almost absent from amastigotes [30].

Another molecule implicated in the invasive and evasive mechanisms is gp63. This protein is the most abundant in the parasite surface, although 10 fold less abundant than LPG [30]. In the promastigote form, gp63 is in the surface of the parasite under the LPG coat and is involved

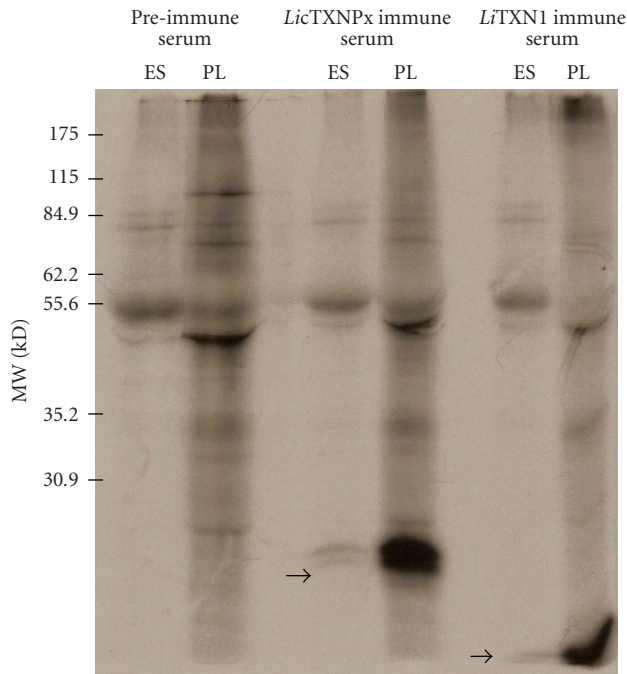


FIGURE 1: The *LicTXNPx* and *LiTXN1* are excreted/secreted proteins. Autoradiography of [^{35}S] methionine labelled *L. infantum* promastigotes lysate (PL) and excreted/secreted antigens (ES), after 3 hours of incubation experiments, immunoprecipitated in the presence of immune anti-*LicTXNPx* or anti-*LiTXN1* sera or with a preimmune serum.

in *L. donovani* promastigote multiplication [31]. Like LPG, gp63 was shown to be implicated in complement resistance, in *L. major* and *L. amazonensis*, by mediating the interconversion of C3b to C3bi [32]. This interconversion favours the internalization via CR3 avoiding the oxidative burst. The binding of gp63 to fibronectin receptors favours the parasite uptake into the macrophage [33]. Furthermore, gp63 is an endopeptidase with the potential to degrade immunoglobulins, complement factors, and lysosomal proteins [34]. The optimal proteolytic activity of gp63 is at pH 4 that may indicate some active proteolytic function in the amastigote stage [34, 35]. Despite this, gp63 expression is downregulated in amastigotes [36]. In spite of being a virulence factor in most *Leishmania* species, immunization trials with gp63 were unable to protect mice from infectious challenge [37]. Moreover, gp63 mutation in *L. major* did not impair in vitro intramacrophagic survival [38]. So the importance of gp63 in the course of the infection remains elusive. The GPIs are molecules 10 times more abundant than LPG on the parasite surface, although like gp63 they are physically under the LPG coat [39]. The GPIs were described in *L. major* as having a protective role at the parasite surface by modulating the expression of nitric oxide synthetase in murine macrophages [40, 41]. Another interesting group of proteins are the cysteine proteases. In *L. mexicana*, this family of proteins seems to be associated with disease progression [42]. Cysteine protease activity can be found at the parasite surface or inside

the macrophage endoplasmatic reticulum, probably associated with proteases released in the phagolysosome by *Leishmania*. The inhibition of major histocompatibility complex class II molecules in macrophages seems to involve, in *L. amazonensis*, the direct sequestering of these molecules following cysteine-peptidase-dependent degradation [43, 44]. Also, cysteine peptidase activity was demonstrated in *L. mexicana* to induce IL-12 repression and degradation of NF-kB [45]. It is still worthy to mention some other secreted proteins described as virulence factors, like the *L. mexicana* chitinase [46] and the *L. donovani* acid phosphatases [47–50]. An in depth study of the *Leishmania* secretome is missing. The most remarkable effort was done by Chenik and colleagues that were able to screen 33 different proteins using an *L. major* cDNA library and a rabbit immune sera raised against the secreted proteins [51]. Nine of them were already described as excreted/secreted proteins in *Leishmania* or other species, 11 corresponded to known proteins but not characterized as secreted and the other 13 were completely new and uncharacterized proteins [51]. This shows how little is known about the *Leishmania* secretome since only a few proteins are extensively characterized [52–56]. It is already known that total *L. major* secreted molecules, described as highly immunogenic [54, 57–59], can confer protection from infectious challenge [57, 59]. So it is obvious that somewhere among the *Leishmania* secreted proteins exist future candidates for vaccine design and drug targets. Nonetheless, one of the problems in vaccine design using surface or secreted/excreted proteins is the fact that these proteins are naturally exposed to the immune system. Chang et al suggest that these secreted/excreted proteins were evolutionarily selected becoming immunologically “silent” [60]. This fact implies that secreted proteins that have a specific function in the establishment of the infection will be “silent,” allowing them to perform their vital functions unchecked by the host immune system [11, 12]. This will be more significant for the proteins involved in the first steps of infection, while the parasite is still exposed to the extracellular environment. As an example of this fact, we present three distinct proteins: a cytosolic trypanothione peroxidase of *L. infantum* (*LicTXNPx*) [61], the *Leishmania* silent information regulator 2 (*Sir2*) [52], and a trypanothione peroxidase of *L. infantum* (*LiTXN1*) [62]. All are *Leishmania* secreted proteins (Figure 1) [52], that show distinct immunological properties. A high antibody titre against the *LicTXNPx* was detected in children [63]. This antibody titre is maintained during the *Leishmania* infection and decreases after its resolution [63]. Despite its high immunogenicity when tested in vitro or in vivo using the Balb/c model, this excreted/secreted protein did not show immunomodulatory properties (Figures 4, 5, and Table 1) and provided no protection against the infectious challenge (data not shown). On the other hand, the *Leishmania* *Sir2* is a typical poorly immunogenic secreted antigen (Figure 2) characterized as a virulence factor [64]. Infectious challenge after *Leishmania* *Sir2* immunization results in a decreased infectivity in the acute phase (Figure 3). This could be partially due to the production of lytic and neutralizing antibodies [65]. The immunization leads to a significant decrease of the spleen

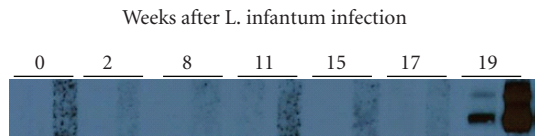


FIGURE 2: Antibodies against *Leishmania* SIR2 protein in the sera of chronically *L. infantum* infected Balb/c mice. Sera from 10^8 intraperitoneal (i.p.) *L. infantum* promastigotes infected Balb/c mice after 2, 8, 11, 15, 17, and 19 weeks, were used in a western blot against $1\ \mu\text{g}$ of rLiSIR2 at two different dilutions, 1 : 200 and 1 : 50 (left and right lanes, respectively, for each different serum). A 0 weeks serum was obtained from noninfected mice.

and liver parasite load at two weeks post infection (Figure 3) [65]. However, it is incapable by itself of resolving the infection, as seen six weeks after infection, where there is no significant difference between the immunized infected group and the infected control group (Figure 3). Certain secreted proteins seem to function as immunomodulatory components, acting as host immune evasive proteins. As an example, another excreted/secreted *Leishmania* protein, LiTXN1 (Figure 1), is capable to increase IL-10 splenocyte secretion (Table 1), a major immunosuppressive cytokine (manuscript in preparation). LiTXN1 can be among the proteins responsible for a transient immunosuppressive state that can favour the parasite internalization and colonization of the host cells. These examples show that among the secreted proteins we can find proteins naturally immunogenic, albeit nonprotective, like LicTXNPx while others less immunogenic show interesting properties in terms of protection probably due to the disruption of their in vivo functions, *Leishmania* Sir2, or by their immunomodulatory properties, LiTXN1. Unfortunately, the reduced immunogenicity of the most interesting secreted proteins probably will prevent their identification by serological based approaches [51].

The reduction of the secreted/excreted proteins to the given examples is an oversimplification. However, it is obvious that much more work is needed in this area, especially in the huge black hole of knowledge that concerns the interaction between host cell and *Leishmania* at a molecular level. Since most of the studies have been done using infection-phenotype approaches, little is known about the true agents involved in macrophagic disruption [16, 58, 68, 69]. We suggest that amastigote secreted proteins will be more immunogenic and can have interesting immunomodulatory properties since they have not been under the selective pressure as the promastigote secreted proteins. The selective pressure of the host immune system is a powerful driving force in evolution, as demonstrated in the case of *Schistosoma mansoni* that has the ability to completely evade the host immune system rendering itself “invisible” [70].

1.3. Panantigens—nonsecreted proteins

Human visceral leishmaniasis, unlike cutaneous leishmaniasis is characterized by high anti-*Leishmania* antibody titres [71, 72]. The role of these antibodies is still unclear as there

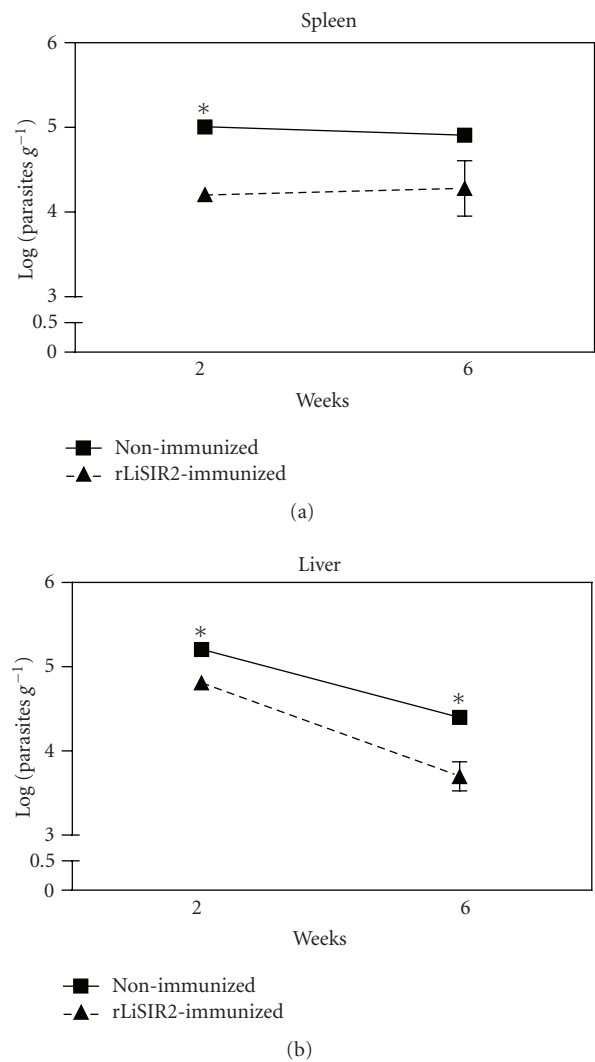


FIGURE 3: The recombinant *Leishmania* SIR2 immunization reduces the parasite load in an acute phase of *L. infantum* Balb/c mice infection. The immunized mice (\blacktriangle) received 3 i.p. injections of recombinant *Leishmania* SIR2 ($50\ \mu\text{g}$) once a week and infected 2 weeks after the last immunization with 10^8 *L. infantum* stationary phase promastigotes. The nonimmunized mice (\blacksquare) were subjected to the same protocol but received PBS instead of recombinant *Leishmania* SIR2. The mice were sacrificed after 2 and 6 weeks of infection and the parasite load in the spleen and liver determined by the organ limiting dilution method [66]. The data represent means and standard deviations for three mice and are representative of two independent experiments. Statistical analysis was performed using Student *t*-test. Statistically, significant differences between immunized and nonimmunized mice are indicated. * $P < .05$.

seems to be no relation with the progression or resolution of the infection [58, 73, 74]. This exuberant humoral response against promastigote and amastigote antigens (fractions or total protein extract or specific *Leishmania* proteins) has been exploited for serodiagnosis with different degrees of success [58, 63, 74, 75]. Interestingly, one of the most sensitive techniques using recombinant *Leishmania* proteins does not involve surface molecules like LPG or gp63 but

TABLE 1: Immunomodulatory properties of several *Leishmania* proteins

Protein	Properties	References
<i>Leishmania</i> Sir2	Secreted, B-cell activator, induces lytic, and neutralizing antibodies	[64, 65]
LicTXNPx	Secreted, elicits strong humoral response and has no influence on cytokine production	[63]
LimTXNPx	Nonsecreted, decreases IL-4 secretion both in vitro and in vivo	Figure 3
LfTXN1	Secreted, poorly immunogenic, induces IL-10 secretion both in vitro and in vivo	(Manuscript in preparation)
LmS3arp	Nonsecreted, B-cell polyclonal activator, inhibits T-cell proliferation, and downregulate IL-2, 12 and IFN- γ in splenocytes	[67]

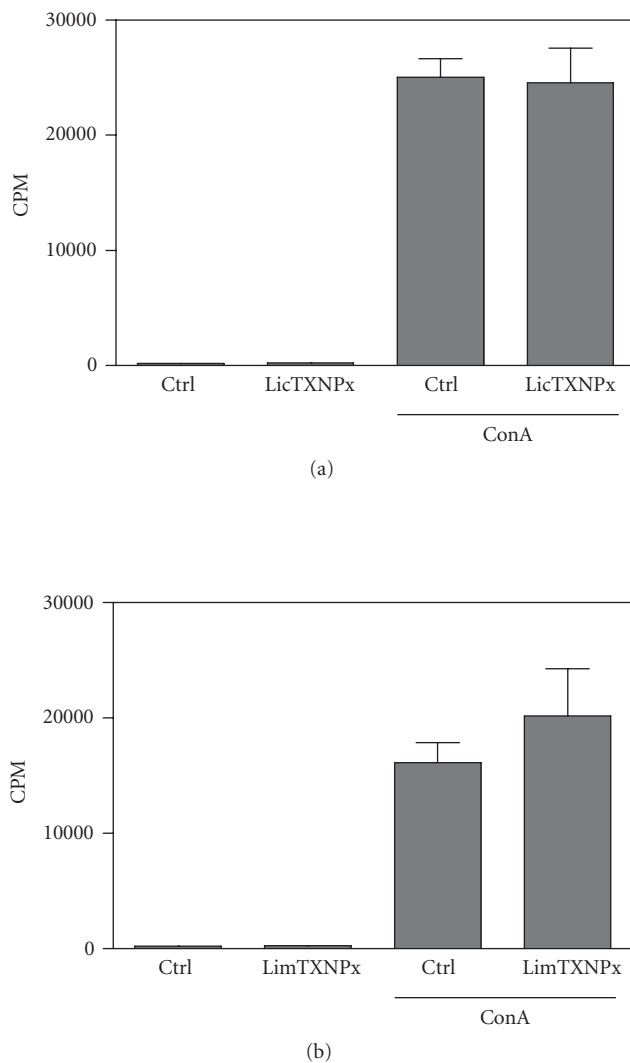


FIGURE 4: No effect of *rLicTXNPx* and *rLimTXNPx* (a) on spleen cell proliferation. Spleen cells from normal Balb/c mice were cultured for 48 hours (2.5×10^5 cells/well) in the presence or absence of concanavalin A (ConA) ($5 \mu\text{g/ml}$) with or without *rLicTXNPx* and *rLimTXNPx* (b) ($10 \mu\text{g/ml}$). The cells were pulsed with [methyl- ^3H] thymidine in the last 8 hours of culture, and cpm (scintillations per minute) were determined. The data represent mean cpm and standard deviations from triplicate cultures of spleen cells from three mice analyzed individually. One of three independent experiments is depicted.

intracellular proteins like histones [75]. The screening of *Leishmania* expression libraries or total protein extract with serum from infected patients has unveiled several major immunogens [76–79]. Among these immunogens, nonsecreted proteins like heat shock proteins, ribosomal proteins and histones were described [76, 77, 80]. These highly-conserved proteins that elicit strong immune responses are generally designated as panantigens [81]. The elevated antibody titre against conserved proteins can be the direct result of B-lymphocytes polyclonal activation similar to what is found in Chagas disease [82, 83] or in autoimmune diseases [84]. Furthermore, in the Balb/c mouse model, an *L. major* protein homologue to the mammalian ribosomal protein S3a, *LmS3arp*, (Table 1) is able to elicit an unspecific activation of B-lymphocytes with the production of autoreactive antibodies [67]. Despite this, in natural infections, the humoral and cellular responses are highly specific with no significant autoantibody production [80, 81, 85]. Moreover, the epitope mapping of several *Leishmania* panantigens tends to reveal *Leishmania* unique epitopes that elicit strong immune responses [79–81, 86, 87]. There is practically no response to the homologous regions in these proteins, which argues against the nonspecific polyclonal activation as the source of reactivity against *Leishmania* panantigens [11, 81]. So, it is expected that these proteins are presented to the immune system during the natural course of the infection. Unlike secreted and surface proteins that are exposed and can be processed by the host immune system, the intracellular proteins are not. One must expect that the contact between the immune system and these proteins happens only upon the parasite destruction. Subsequently, one obvious source of intracellular proteins is the parasites from the initial inoculum some of which are destroyed. Furthermore, it was recently demonstrated that the presence of apoptotic parasites in the initial inoculum is a requisite for disease development [88]. Albeit the small number of parasites in the initial inoculum is not sufficient to explain the physical expansion of cell populations and immune mediators during the course of infection, it is a fact that panantigens are exposed long before the onset of any visible symptoms [88]. This initial release of panantigens may function in conjugation with the secreted and surface proteins acting as a transient “smoke screen” that enables the onset of the initial infection by viable parasites. The immune response developed against the panantigens may contribute to hide the parasite molecules

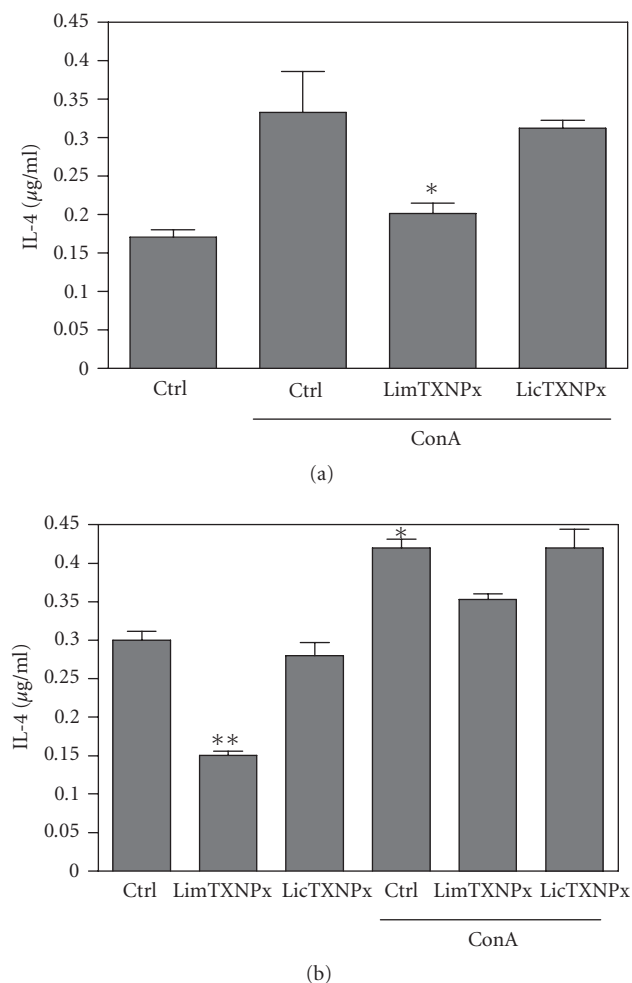


FIGURE 5: Levels of IL-4 in the supernatants of spleen cells from *rLicTXNPx* or *rLimTXNPx* treated and untreated Balb/c mice. The spleen cells from untreated (a) and treated (b) Balb/c mice (50 µg of *rLicTXNPx* or *rLimTXNPx* i.p. injected once a week for 3 weeks followed by 2 weeks before the spleen cells were recovered) were incubated with *rLicTXNPx* or *rLimTXNPx* (10 µg/ml) in the presence or absence of ConA (5 µg/ml) for 48 hours. The levels of IL-4 were determined by ELISA in comparison with a standard curve using the recombinant IL-4. The data represent means and standard deviations for triplicate cultures of spleen cells from three mice. The results are from a representative experiment of three carried out independently. Statistical analysis was performed using Student *t*-test. Statistically, significant differences is indicated. * $P < .05$ and ** $P < .01$.

involved in the invasion of the phagocytic cells. Moreover, the humoral profile suggests a steady release of panantigens during the infection [58, 73, 74]. It is also [81] suggested that panantigens originate from the residing parasite population either by the destruction of intracellular amastigotes by active macrophages or by the destruction of amastigotes that burst from macrophages or even by the spontaneous cytolysis of amastigotes inside the infected cells [11]. In active leishmaniasis, there seems to be a general anergy in infected macrophages that leads to impaired functioning

[16, 89–92]. So, in this case, it is not expected that panantigens may result from the macrophage mediated elimination of *Leishmania*, as it will lead to the resolution of the infection. Although free amastigotes can infect macrophages directly, they are almost undetectable even in heavily infected hosts. Thus, their contribution to the pool of panantigens should be diminished [11]. The low speed of intracellular amastigotes multiplication and their capacity to delay apoptosis in heavily infected phagocytes [60] enables a lasting coexistence in infected macrophages. The most viable theory for the phased release of panantigens would be the spontaneous cytolysis (described as apoptosis by some authors) of intracellular amastigotes [93]. The effect of the panantigen release is gradual and more significant as the infection develops and the parasite burden augments explaining the increasing intense immunopathology associated with *Leishmania* infection [11]. This increase in panantigen release can be extrapolated in correlation with panantigen antibody titres and parasite burden as seen for the *Leishmania* kinesin like protein, k39 [81, 94]. Another protein that shows similar characteristics to k39 is the *LicTXNPx* which has also the ability to induce a high quantity of nonprotective antibodies both in natural or experimentally infected dogs (unpublished data) and in infected humans [63]. This induction can be done by direct activation on B-cell populations with clonal expansion as described for *Leishmania* Sir2 [65], which seems not to be the case since little or no antibodies for *LicTXNPx* are seen in HIV patients with leishmaniasis (unpublished data), as was observed for k39 [95]. This suggests the existence of specific T-cell epitopes in *LicTXNPx*. The nature of these epitopes will not be similar to those of k39, because the latter contain repetitive motifs that will contribute significantly to the clonal expansion of B-cells. For *LicTXNPx*, the strong immune response observed should be due to the formation of highly stable multimeric structures characteristic of this protein [96]. The nonprotective antibody titres induced by *LicTXNPx* seem to be transient and associated only with the immunopathology as they disappear after a period of time, unlike other *Leishmania* specific antibodies simultaneously in circulation [63]. These antibodies may contribute to the impairment of bone marrow and spleen [11].

The capacity of panantigens to modulate the immune system can be related to the fact that these intracellular proteins were not selected by the immune pressure, unlike the secreted and surface proteins. Hence, in the right conditions, they can provide the immunomodulatory properties needed for vaccine design. The most prominent intracellular proteins used in vaccine design are still LACK and *LmSTI1* that are able to induce protective responses with a parasite-specific Th1 immune response (high IFN- γ but not IL-4 secretion) [87, 97]. Among the *Leishmania* proteins studied by our group, a mitochondrial trypanothione peroxidase (*LimTXNPx*; Table 1), homologous to *LicTXNPx*, is able to induce down regulation of IL-4, a Th2 cytokine, in splenocytes both in vitro and in vivo (Figure 5) though unable to induce significant protection (data not shown). It is noteworthy that similar proteins such as *LicTXNPx* and *LimTXNPx* are able to elicit distinct immune responses.

LicTXNPx is secreted inducing only the production of non-protective antibodies, while its related intracellular counterpart *LimTXNPx* has immunomodulatory properties interfering with cytokine production (Figure 5). This can be a good example of the type of evolutionary pressure induced by the immune system, in which two related proteins have distinct immunomodulatory properties (Figures 4, 5). It suggests that the host immune system selects characteristics in the exposed proteins that are either innocuous or nondeleterious to the parasite. Since this does not occur in the intracellular proteins they can retain distinct immunoregulatory properties that could be useful in vaccine design.

2. CONCLUDING REMARKS

Taken altogether, these observations support the idea that secreted and surface proteins tend to be poor or nonprotective immune modulators, like *LicTXNPx*. Nonetheless, their use in vaccine could induce short-lived protection probably due to the disruption of their biological activity or by production of lytic antibodies, as seen with *Leishmania* Sir2. Intracellular components like *LmS3arp* and *LimTXNPx* tend to have defined immunomodulatory properties. *LmS3arp* is able to induce polyclonal activation of B lymphocytes while *LiLimTXNPxTXNPx* confers a nonprotective downregulation of IL-4 secretion by splenocytes.

Using the basic knowledge acquired in the study of the immune response against *Leishmania* in different murine models, one can look for proteins that induce the immunological phenotype needed for protection. Therefore, our data suggests that in vaccine development, the conjugation of secreted and surface proteins with intracellular components should provide a more efficient protection. Hence, the impairment of the parasite entrance in the host cells, either by lytic antibodies or by the disruption of protein function, will delay the onset of the immune suppression associated with *Leishmania*. The parasite elimination could be achieved through a protective cellular response, induced by the intracellular parasite components present in the vaccine.

ACKNOWLEDGMENTS

This work was supported by FCT and Programa Operacional Ciência e Inovação 2010 (POCI 2010) and FEDER in the projects: POCI/SAU-FCF/59837/2005 and POCI/CVT/59840/2004. R.S. and J.T. are supported by fellowships from FCT and FEDER number SFRH/BD/13120/2003 and SFRH/BD/18137/2004, respectively. The proteins, *LicTXNPx*, *LimTXNPx*, and *LiTXN1*, used in this works were purified from clones provided by A. Tomás.

REFERENCES

- [1] R. Badaro, T. C. Jones, E. M. Carvalho, et al., "New perspectives on a subclinical form of visceral leishmaniasis," *Journal of Infectious Diseases*, vol. 154, no. 6, pp. 1003–1011, 1986.
- [2] S. M. Salman, N. G. Rubeiz, and A.-G. Kibbi, "Cutaneous leishmaniasis: clinical features and diagnosis," *Clinics in Dermatology*, vol. 17, no. 3, pp. 291–296, 1999.
- [3] World Health Organization, "Leishmaniasis and *Leishmania*-HIV co-infection," in *WHO Report on Global Surveillance of Epidemic-Prone Infectious Diseases*, WHO, Geneva, Switzerland, 2000.
- [4] W. Solbach and T. Laskay, "The host response to *Leishmania* infection," *Advances in Immunology*, vol. 74, pp. 275–317, 2000.
- [5] C. Bogdan, A. Gessner, S. Werner, and M. Rölinghoff, "Invasion, control and persistence of *Leishmania* parasites," *Current Opinion in Immunology*, vol. 8, no. 4, pp. 517–525, 1996.
- [6] J. Alexander and K. Bryson, "T helper (h)1/Th2 and *Leishmania*: paradox rather than paradigm," *Immunology Letters*, vol. 99, no. 1, pp. 17–23, 2005.
- [7] A. Satoskar, H. Bluethmann, and J. Alexander, "Disruption of the murine interleukin-4 gene inhibits disease progression during *Leishmania mexicana* infection but does not increase control of *Leishmania donovani* infection," *Infection and Immunity*, vol. 63, no. 12, pp. 4894–4899, 1995.
- [8] G. D. Miralles, M. Y. Stoeckle, D. F. McDermott, F. D. Finkelman, and H. W. Murray, "Th1 and Th2 cell-associated cytokines in experimental visceral leishmaniasis," *Infection and Immunity*, vol. 62, no. 3, pp. 1058–1063, 1994.
- [9] A. Casadevall, "Antibody-mediated protection against intracellular pathogens," *Trends in Microbiology*, vol. 6, no. 3, pp. 102–107, 1998.
- [10] R. Ravindran and N. Ali, "Progress in vaccine research and possible effector mechanisms in visceral leishmaniasis," *Current Molecular Medicine*, vol. 4, no. 6, pp. 697–709, 2004.
- [11] K. P. Chang, S. G. Reed, B. S. McGwire, and L. Soong, "*Leishmania* model for microbial virulence: the relevance of parasite multiplication and pathoantigenicity," *Acta Tropica*, vol. 85, no. 3, pp. 375–390, 2003.
- [12] M. G. Rittig and C. Bogdan, "*Leishmania*-host-cell interaction: complexities and alternative views," *Parasitology Today*, vol. 16, no. 7, pp. 292–297, 2000.
- [13] M. C. de Almeida, V. Vilhena, A. Barral, and M. Barral-Netto, "Leishmanial infection: analysis of its first steps. A review," *Memorias do Instituto Oswaldo Cruz*, vol. 98, no. 7, pp. 861–870, 2003.
- [14] S. Kamhawi, "The biological and immunomodulatory properties of sand fly saliva and its role in the establishment of *Leishmania* infections," *Microbes and Infection*, vol. 2, no. 14, pp. 1765–1773, 2000.
- [15] D. J. Gregory and M. Olivier, "Subversion of host cell signalling by the protozoan parasite *Leishmania*," *Parasitology*, vol. 130, supplement 1, pp. S27–S35, 2005.
- [16] M. Olivier, D. J. Gregory, and G. Forget, "Subversion mechanisms by which *Leishmania* parasites can escape the host immune response: a signaling point of view," *Clinical Microbiology Reviews*, vol. 18, no. 2, pp. 293–305, 2005.
- [17] S. M. Puentes, D. M. Dwyer, P. A. Bates, and K. A. Joiner, "Binding and release of C3 from *Leishmania donovani* promastigotes during incubation in normal human serum," *Journal of Immunology*, vol. 143, no. 11, pp. 3743–3749, 1989.
- [18] M. J. McConville, J. E. Thomas-Oates, M. A. J. Ferguson, and S. W. Homans, "Structure of the lipophosphoglycan from *Leishmania major*," *Journal of Biological Chemistry*, vol. 265, no. 32, pp. 19611–19623, 1990.
- [19] C. R. Davies, A. M. Cooper, C. Peacock, R. P. Lane, and J. M. Blackwell, "Expression of LPG and gp63 by different developmental stages of *Leishmania major* in the sandfly *Phlebotomus papatasi*," *Parasitology*, vol. 101, no. 3, pp. 337–343, 1990.
- [20] D. L. Sacks, "Metacylogenesis in *Leishmania* promastigotes," *Experimental Parasitology*, vol. 69, no. 1, pp. 100–103, 1989.

- [21] D. M. Mosser and L. A. Rosenthal, "Leishmania-macrophage interactions: multiple receptors, multiple ligands and diverse cellular responses," *Seminars in Cell Biology*, vol. 4, no. 5, pp. 315–322, 1993.
- [22] M. J. de Veer, J. M. Curtis, T. M. Baldwin, et al., "MyD88 is essential for clearance of *Leishmania major*: possible role for lipophosphoglycan and toll-like receptor 2 signaling," *European Journal of Immunology*, vol. 33, no. 10, pp. 2822–2831, 2003.
- [23] I. Becker, N. Salaiza, M. Aguirre, et al., "Leishmania lipophosphoglycan (LPG) activates NK cells through toll-like receptor-2," *Molecular and Biochemical Parasitology*, vol. 130, no. 2, pp. 65–74, 2003.
- [24] L. Miao, A. Stafford, S. Nir, S. J. Turco, T. D. Flanagan, and R. M. Eband, "Potent inhibition of viral fusion by the lipophosphoglycan of *Leishmania donovani*," *Biochemistry*, vol. 34, no. 14, pp. 4676–4683, 1995.
- [25] M. Desjardins and A. Descoteaux, "Inhibition of phagolysosomal biogenesis by the *Leishmania* lipophosphoglycan," *Journal of Experimental Medicine*, vol. 185, no. 12, pp. 2061–2068, 1997.
- [26] J. F. Dermine, S. Scianimanico, C. Privé, A. Descoteaux, and M. Desjardins, "Leishmania promastigotes require lipophosphoglycan to actively modulate the fusion properties of phagosomes at an early step of phagocytosis," *Cellular Microbiology*, vol. 2, no. 2, pp. 115–126, 2000.
- [27] R. Lodge, T. O. Diallo, and A. Descoteaux, "Leishmania donovani lipophosphoglycan blocks NADPH oxidase assembly at the phagosome membrane," *Cellular Microbiology*, vol. 8, no. 12, pp. 1922–1931, 2006.
- [28] W. K. Tonui, S. S. Mpoke, A. S. Orago, S. J. Turco, P. A. Mbat, and G. M. Mkoji, "Leishmania donovani-derived lipophosphoglycan plus BCG induces a Th1 type immune response but does not protect Syrian golden hamsters (*Mesocricetus auratus*) and BALB/c mice against *Leishmania donovani*," *Onderstepoort Journal of Veterinary Research*, vol. 70, no. 4, pp. 255–263, 2003.
- [29] W. K. Tonui, "Vaccination of BALB/c mice with *Leishmania donovani* derived lipophosphoglycan does not confer cross-protection to *L. major* infections," *East African Medical Journal*, vol. 80, no. 5, pp. 260–263, 2003.
- [30] P. F. P. Pimenta, E. M. B. Saraiva, and D. L. Sacks, "The comparative fine structure and surface glycoconjugate expression of three life stages of *Leishmania major*," *Experimental Parasitology*, vol. 72, no. 2, pp. 191–204, 1991.
- [31] S. Pandey, P. Chakraborti, R. Sharma, S. Bandyopadhyay, D. Sarkar, and S. Adhya, "Involvement of *Leishmania donovani* major surface glycoprotein gp63 in promastigote multiplication," *Journal of Biosciences*, vol. 29, no. 1, pp. 15–22, 2004.
- [32] A. Brittingham, C. J. Morrison, W. R. McMaster, B. S. McGwire, K. P. Chang, and D. M. Mosser, "Role of the *Leishmania* surface protease gp63 in complement fixation, cell adhesion, and resistance to complement-mediated lysis," *Journal of Immunology*, vol. 155, no. 6, pp. 3102–3111, 1995.
- [33] A. Brittingham, G. Chen, B. S. McGwire, K. P. Chang, and D. M. Mosser, "Interaction of *Leishmania* gp63 with cellular receptors for fibronectin," *Infection and Immunity*, vol. 67, no. 9, pp. 4477–4484, 1999.
- [34] G. Chaudhuri and K. P. Chang, "Acid protease activity of a major surface membrane glycoprotein (gp63) from *Leishmania mexicana* promastigotes," *Molecular and Biochemical Parasitology*, vol. 27, no. 1, pp. 43–52, 1988.
- [35] G. Chaudhuri, M. Chaudhuri, A. Pan, and K. P. Chang, "Surface acid proteinase (gp63) of *Leishmania mexicana*. A metalloenzyme capable of protecting liposome-encapsulated proteins from phagolysosomal degradation by macrophages," *Journal of Biological Chemistry*, vol. 264, no. 13, pp. 7483–7489, 1989.
- [36] P. Schneider, J. P. Rosat, J. Bouvier, J. Louis, and C. Bordier, "Leishmania major: differential regulation of the surface metalloprotease in amastigote and promastigote stages," *Experimental Parasitology*, vol. 75, no. 2, pp. 196–206, 1992.
- [37] E. Handman, L. L. Button, and R. W. McMaster, "Leishmania major: production of recombinant gp63, its antigenicity and immunogenicity in mice," *Experimental Parasitology*, vol. 70, no. 4, pp. 427–435, 1990.
- [38] P. B. Joshi, D. L. Sacks, G. Modi, and W. R. McMaster, "Targeted gene deletion of *Leishmania major* genes encoding developmental stage-specific leishmanolysin (gp63)," *Molecular Microbiology*, vol. 27, no. 3, pp. 519–530, 1998.
- [39] M. A. J. Ferguson, "The surface glycoconjugates of trypanosomatid parasites," *Philosophical Transactions of the Royal Society of London B: Biological Sciences*, vol. 352, no. 1359, pp. 1295–1302, 1997.
- [40] L. Proudfoot, P. Schneider, M. A. J. Ferguson, and M. J. McConville, "Biosynthesis of the glycolipid anchor of lipophosphoglycan and the structurally related glycoinositolphospholipids from *Leishmania major*," *Biochemical Journal*, vol. 308, part 1, pp. 45–55, 1995.
- [41] L. Proudfoot, A. V. Nikolaev, G. J. Feng, et al., "Regulation of the expression of nitric oxide synthase and leishmanicidal activity by glycoconjugates of *Leishmania* lipophosphoglycan in murine macrophages," *Proceedings of the National Academy of Sciences of the United States of America*, vol. 93, no. 20, pp. 10984–10989, 1996.
- [42] J. C. Mottram, G. H. Coombs, and J. Alexander, "Cysteine peptidases as virulence factors of *Leishmania*," *Current Opinion in Microbiology*, vol. 7, no. 4, pp. 375–381, 2004.
- [43] S. De Souza Leao, T. Lang, E. Prina, R. Hellio, and J. C. Antoine, "Intracellular *Leishmania amazonensis* amastigotes internalize and degrade MHC class II molecules of their host cells," *Journal of Cell Science*, vol. 108, part 10, pp. 3219–3231, 1995.
- [44] N. Courret, C. Frehel, E. Prina, T. Lang, and J. C. Antoine, "Kinetics of the intracellular differentiation of *Leishmania amazonensis* and internalization of host MHC molecules by the intermediate parasite stages," *Parasitology*, vol. 122, no. 3, pp. 263–279, 2001.
- [45] P. Cameron, A. McGachy, M. Anderson, et al., "Inhibition of lipopolysaccharide-induced macrophage IL-12 production by *Leishmania mexicana* amastigotes: the role of cysteine peptidases and the NF- κ B signaling pathway," *Journal of Immunology*, vol. 173, no. 5, pp. 3297–3304, 2004.
- [46] M. B. Joshi, M. E. Rogers, A. M. Shakarian, et al., "Molecular characterization, expression, and in vivo analysis of Lmex-Cht1: the chitinase of the human pathogen, *Leishmania mexicana*," *Journal of Biological Chemistry*, vol. 280, no. 5, pp. 3847–3861, 2005.
- [47] A. M. Shakarian, M. B. Joshi, M. Yamage, S. L. Ellis, A. Debrabant, and D. M. Dwyer, "Members of a unique histidine acid phosphatase family are conserved amongst a group of primitive eukaryotic human pathogens," *Molecular and Cellular Biochemistry*, vol. 245, no. 1–2, pp. 31–41, 2003.
- [48] J. K. Lovelace and M. Gottlieb, "Comparison of extracellular acid phosphatases from various isolates of *Leishmania*," *American Journal of Tropical Medicine and Hygiene*, vol. 35, no. 6, pp. 1121–1128, 1986.

- [49] S. L. Ellis, A. M. Shakarian, and D. M. Dwyer, "Leishmania: amastigotes synthesize conserved secretory acid phosphatases during human infection," *Experimental Parasitology*, vol. 89, no. 2, pp. 161–168, 1998.
- [50] P. S. Doyle and D. M. Dwyer, "Leishmania: immunochemical comparison of the secretory (extracellular) acid phosphatases from various species," *Experimental Parasitology*, vol. 77, no. 4, pp. 435–444, 1993.
- [51] M. Chenik, S. Lakhal, N. Ben Khalef, L. Zribi, H. Louzir, and K. Dellagi, "Approaches for the identification of potential excreted/secreted proteins of *Leishmania major* parasites," *Parasitology*, vol. 132, no. 4, pp. 493–509, 2006.
- [52] B. Yahiaoui, A. Taibi, and A. Ouaiissi, "A *Leishmania major* protein with extensive homology to silent information regulator 2 of *Saccharomyces cerevisiae*," *Gene*, vol. 169, no. 1, pp. 115–118, 1996.
- [53] M. Wiese, T. Ilg, F. Lottspeich, and P. Overath, "Ser/Thr-rich repetitive motifs as targets for phosphoglycan modifications in *Leishmania mexicana* secreted acid phosphatase," *The EMBO Journal*, vol. 14, no. 6, pp. 1067–1074, 1995.
- [54] J. R. Webb, A. Campos-Neto, P. J. Owendale, et al., "Human and murine immune responses to a novel *Leishmania major* recombinant protein encoded by members of a multicopy gene family," *Infection and Immunity*, vol. 66, no. 7, pp. 3279–3289, 1998.
- [55] F. M. Symons, P. J. Murray, H. Ji, et al., "Characterization of a polymorphic family of integral membrane proteins in promastigotes of different *Leishmania* species," *Molecular and Biochemical Parasitology*, vol. 67, no. 1, pp. 103–113, 1994.
- [56] D. Sereno, L. Vanhille, B. Vergnes, A. Monte-Allegre, and A. Ouaiissi, "Experimental study of the function of the excreted/secreted *Leishmania* LmSIR2 protein by heterologous expression in eukaryotic cell line," *Kinetoplastid Biology and Disease*, vol. 4, p. 1, 2005.
- [57] W. K. Tonui, J. S. Mejia, L. Hochberg, et al., "Immunization with *Leishmania major* exogenous antigens protects susceptible BALB/c mice against challenge infection with *L. major*," *Infection and Immunity*, vol. 72, no. 10, pp. 5654–5661, 2004.
- [58] J. R. Ryan, A. M. Smityman, G.-H. Rajasekariah, L. Hochberg, J. M. Stiteler, and S. K. Martin, "Enzyme-linked immunosorbent assay based on soluble promastigote antigen detects immunoglobulin M (IgM) and IgG antibodies in sera from cases of visceral and cutaneous leishmaniasis," *Journal of Clinical Microbiology*, vol. 40, no. 3, pp. 1037–1043, 2002.
- [59] J. L. Lemesre, P. Holzmüller, M. Cavaleira, R. B. Gonçalves, G. Hottin, and G. Papierok, "Protection against experimental visceral leishmaniasis infection in dogs immunized with purified excreted secreted antigens of *Leishmania infantum* promastigotes," *Vaccine*, vol. 23, no. 22, pp. 2825–2840, 2005.
- [60] K. P. Chang, S. G. Reed, B. S. McGwire, and L. Soong, "*Leishmania* model for microbial virulence: the relevance of parasite multiplication and pathoantigenicity," *Acta Tropica*, vol. 85, no. 3, pp. 375–390, 2003.
- [61] H. Castro, C. Sousa, M. Santos, A. Cordeiro-da-Silva, L. Flohé, and A. M. Tomás, "Complementary antioxidant defense by cytoplasmic and mitochondrial peroxiredoxins in *Leishmania infantum*," *Free Radical Biology and Medicine*, vol. 33, no. 11, pp. 1552–1562, 2002.
- [62] H. Castro, C. Sousa, M. Novais, et al., "Two linked genes of *Leishmania infantum* encode trypanothione synthetase localised to cytosol and mitochondrion," *Molecular and Biochemical Parasitology*, vol. 136, no. 2, pp. 137–147, 2004.
- [63] N. Santarém, A. Tomás, A. Ouaiissi, et al., "Antibodies against a *Leishmania infantum* peroxiredoxin as a possible marker for diagnosis of visceral leishmaniasis and for monitoring the efficacy of treatment," *Immunology Letters*, vol. 101, no. 1, pp. 18–23, 2005.
- [64] B. Vergnes, D. Sereno, N. Madjidian-Sereno, J. L. Lemesre, and A. Ouaiissi, "Cytoplasmic SIR2 homologue overexpression promotes survival of *Leishmania* parasites by preventing programmed cell death," *Gene*, vol. 296, no. 1-2, pp. 139–150, 2002.
- [65] R. Silvestre, A. Cordeiro-da-Silva, J. Tavares, D. Sereno, and A. Ouaiissi, "*Leishmania* cytosolic silent information regulatory protein 2 deacetylase induces murine B-cell differentiation and in vivo production of specific antibodies," *Immunology*, vol. 119, no. 4, pp. 529–540, 2006.
- [66] B. Vergnes, D. Sereno, J. Tavares, et al., "Targeted disruption of cytosolic SIR2 deacetylase discloses its essential role in *Leishmania* survival and proliferation," *Gene*, vol. 363, no. 1-2, pp. 85–96, 2005.
- [67] A. Cordeiro-da-Silva, M. C. Borges, E. Guilvard, and A. Ouaiissi, "Dual role of the *Leishmania major* ribosomal protein S3a homologue in regulation of T- and B-cell activation," *Infection and Immunity*, vol. 69, no. 11, pp. 6588–6596, 2001.
- [68] M. A. Vannier-Santos, A. Martiny, and W. de Souza, "Cell biology of *Leishmania* spp.: invading and evading," *Current Pharmaceutical Design*, vol. 8, no. 4, pp. 297–318, 2002.
- [69] S. Saha, S. Mondal, A. Banerjee, J. Ghose, S. Bhowmick, and N. Ali, "Immune responses in kala-azar," *Indian Journal of Medical Research*, vol. 123, no. 3, pp. 245–266, 2006.
- [70] A. W. Cheever, K. F. Hoffmann, and T. A. Wynn, "Immunopathology of *Schistosomiasis mansoni* in mice and men," *Immunology Today*, vol. 21, no. 9, pp. 465–466, 2000.
- [71] A. B. Neogy, A. Nandy, B. Ghosh Dastidar, and A. B. Chowdhury, "Antibody kinetics in kala-azar in response to treatment," *Annals of Tropical Medicine and Parasitology*, vol. 81, no. 6, pp. 727–729, 1987.
- [72] R. D. Pearson and A. Q. Sousa, "Clinical spectrum of leishmaniasis," *Clinical Infectious Diseases*, vol. 22, no. 1, pp. 1–13, 1996.
- [73] A. K. Ghosh, S. Dasgupta, and A. C. Ghose, "Immunoglobulin G subclass-specific antileishmanial antibody responses in Indian kala-azar and post-kala-azar dermal leishmaniasis," *Clinical and Diagnostic Laboratory Immunology*, vol. 2, no. 3, pp. 291–296, 1995.
- [74] K. Anam, F. Afrin, D. Banerjee, et al., "Differential decline in *Leishmania* membrane antigen-specific immunoglobulin G (IgG), IgM, IgE, and IgG subclass antibodies in Indian kala-azar patients after chemotherapy," *Infection and Immunity*, vol. 67, no. 12, pp. 6663–6669, 1999.
- [75] I. A. Maalej, M. Chenik, H. Louzir, et al., "Comparative evaluation of ELISAs based on ten recombinant or purified *Leishmania* antigens for the serodiagnosis of Mediterranean visceral leishmaniasis," *American Journal of Tropical Medicine and Hygiene*, vol. 68, no. 3, pp. 312–320, 2003.
- [76] M. Soto, J. M. Requena, M. Garcia, L. C. Gomez, I. Navarrete, and C. Alonso, "Genomic organization and expression of two independent gene arrays coding for two antigenic acidic ribosomal proteins of *Leishmania*," *Journal of Biological Chemistry*, vol. 268, no. 29, pp. 21835–21843, 1993.
- [77] J. MacFarlane, M. L. Blaxter, R. P. Bishop, M. A. Miles, and J. M. Kelly, "Identification and characterisation of a *Leishmania donovani* antigen belonging to the 70-kDa heat-shock protein family," *European Journal of Biochemistry*, vol. 190, no. 2, pp. 377–384, 1990.

- [78] M. A. Dea-Ayuela, S. Rama-Iñiguez, and F. Bolás-Fernández, "Proteomic analysis of antigens from *Leishmania infantum* promastigotes," *Proteomics*, vol. 6, no. 14, pp. 4187–4194, 2006.
- [79] J. M. Burns Jr., W. G. Shreffler, D. R. Benson, H. W. Ghalib, R. Badaro, and S. G. Reed, "Molecular characterization of a kinesin-related antigen of *Leishmania chagasi* that detects specific antibody in African and American visceral leishmaniasis," *Proceedings of the National Academy of Sciences of the United States of America*, vol. 90, no. 2, pp. 775–779, 1993.
- [80] M. Soto, J. M. Requena, L. Quijada, et al., "Antigenicity of the *Leishmania infantum* histones H2B and H4 during canine viscerocutaneous leishmaniasis," *Clinical and Experimental Immunology*, vol. 115, no. 2, pp. 342–349, 1999.
- [81] J. M. Requena, C. Alonso, and M. Soto, "Evolutionarily conserved proteins as prominent immunogens during *Leishmania* infections," *Parasitology Today*, vol. 16, no. 6, pp. 246–250, 2000.
- [82] P. Minoprio, O. Burlen, P. Pereira, et al., "Most B cells in acute *Trypanosoma cruzi* infection lack parasite specificity," *Scandinavian Journal of Immunology*, vol. 28, no. 5, pp. 553–561, 1988.
- [83] A. Cordeiro-da-Silva, A. G. Espinoza, A. Taibi, A. Ouaisi, and P. Minoprio, "A 24,000 MW *Trypanosoma cruzi* antigen is a B-cell activator," *Immunology*, vol. 94, no. 2, pp. 189–196, 1998.
- [84] S. Avrameas, "Natural autoantibodies: from 'horror autotoxicus' to 'gnothi seauton,'" *Immunology Today*, vol. 12, no. 5, pp. 154–159, 1991.
- [85] L. Quijada, J. M. Requena, M. Soto, and C. Alonso, "During canine viscerocutaneous leishmaniasis the anti-Hsp70 antibodies are specifically elicited by the parasite protein," *Parasitology*, vol. 112, no. 3, pp. 277–284, 1996.
- [86] M. Soto, J. M. Requena, L. Quijada, et al., "Mapping of the linear antigenic determinants from the *Leishmania infantum* histone H2A recognized by sera from dogs with leishmaniasis," *Immunology Letters*, vol. 48, no. 3, pp. 209–214, 1995.
- [87] E. Mougneau, F. Altare, A. E. Wakil, et al., "Expression cloning of a protective *Leishmania* antigen," *Science*, vol. 268, no. 5210, pp. 563–566, 1995.
- [88] G. van Zandbergen, A. Bollinger, A. Wenzel, et al., "*Leishmania* disease development depends on the presence of apoptotic promastigotes in the virulent inoculum," *Proceedings of the National Academy of Sciences of the United States of America*, vol. 103, no. 37, pp. 13837–13842, 2006.
- [89] O. Bacellar, C. Brodskyn, J. Guerreiro, et al., "Interleukin-12 restores interferon- γ production and cytotoxic responses in visceral leishmaniasis," *Journal of Infectious Diseases*, vol. 173, no. 6, pp. 1515–1518, 1996.
- [90] S. Buates and G. Matlashewski, "General suppression of macrophage gene expression during *Leishmania donovani* infection," *Journal of Immunology*, vol. 166, no. 5, pp. 3416–3422, 2001.
- [91] H. W. Ghalib, J. A. Whittle, M. Kubin, et al., "IL-12 enhances Th1-type responses in human *Leishmania donovani* infections," *Journal of Immunology*, vol. 154, no. 9, pp. 4623–4629, 1995.
- [92] N. E. Reiner, W. Ng, and W. R. McMaster, "Parasite-accessory cell interactions in murine leishmaniasis. II. *Leishmania donovani* suppresses macrophage expression of class I and class II major histocompatibility complex gene products," *Journal of Immunology*, vol. 138, no. 6, pp. 1926–1932, 1987.
- [93] N. Lee, S. Bertholet, A. Debrabant, J. Muller, R. Duncan, and H. L. Nakhasi, "Programmed cell death in the unicellular protozoan parasite *Leishmania*," *Cell Death and Differentiation*, vol. 9, no. 1, pp. 53–64, 2002.
- [94] S. Singh, A. Gilman-Sachs, K. P. Chang, and S. G. Reed, "Diagnostic and prognostic value of K39 recombinant antigen in Indian leishmaniasis," *Journal of Parasitology*, vol. 81, no. 6, pp. 1000–1003, 1995.
- [95] J. Alvar, C. Cañavate, B. Gutiérrez-Solar, et al., "*Leishmania* and human immunodeficiency virus coinfection: the first 10 years," *Clinical Microbiology Reviews*, vol. 10, no. 2, pp. 298–319, 1997.
- [96] L. Flohé, H. J. Hecht, and P. Steinert, "Glutathione and trypanothione in parasitic hydroperoxide metabolism," *Free Radical Biology and Medicine*, vol. 27, no. 9–10, pp. 966–984, 1999.
- [97] J. R. Webb, D. Kaufmann, A. Campos-Neto, and S. G. Reed, "Molecular cloning of a novel protein antigen of *Leishmania major* that elicits a potent immune response in experimental murine leishmaniasis," *Journal of Immunology*, vol. 157, no. 11, pp. 5034–5041, 1996.