

Research article

Open Access

Molecular cloning, genomic characterization and over-expression of a novel gene, *XRRAL*, identified from human colorectal cancer cell HCT116^{Clone2_XRR} and macaque testis

Felix M Mesak^{1,2}, Naoki Osada^{3,4}, Katsuyuki Hashimoto³, Qing Y Liu⁵ and Cheng E Ng^{*1,2}

Address: ¹Centre for Cancer Therapeutics, Ottawa Regional Cancer Centre, 503 Smyth Rd., Ottawa, ON, K1H 1C4, Canada, ²Faculty of Medicine, University of Ottawa, 451 Smyth Rd., Ottawa, ON, K1H 8M5, Canada, ³Division of Genetic Resources, National Institute of Infectious Disease, Toyama 1-23-1, Shinjuku-ku, Tokyo 162-8640, Japan, ⁴Current address: Department of Ecology and Evolution, University of Chicago, 1101 E57th Str., Chicago, IL 60637, USA and ⁵Institute for Biological Sciences, National Research Council of Canada, 1200 Montreal Rd, M-54, Ottawa, ON, K1A 0R6, Canada

Email: Felix M Mesak - Felix.Mesak@orcc.on.ca; Naoki Osada - nosada@uchicago.edu; Katsuyuki Hashimoto - khashi@nih.go.jp; Qing Y Liu - Qing_Yan.Liu@nrc.ca; Cheng E Ng* - Cheng.Ng@orcc.on.ca

* Corresponding author

Published: 09 August 2003

Received: 10 April 2003

BMC Genomics 2003, 4:32

Accepted: 09 August 2003

This article is available from: <http://www.biomedcentral.com/1471-2164/4/32>

© 2003 Mesak et al; licensee BioMed Central Ltd. This is an Open Access article: verbatim copying and redistribution of this article are permitted in all media for any purpose, provided this notice is preserved along with the article's original URL.

Abstract

Background: As part of our investigation into the genetic basis of tumor cell radioresponse, we have isolated several clones with a wide range of responses to X-radiation (XR) from an unirradiated human colorectal tumor cell line, HCT116. Using human cDNA microarrays, we recently identified a novel gene that was down-regulated by two-fold in an XR-resistant cell clone, HCT116^{Clone2_XRR}. We have named this gene as X-ray radiation resistance associated I (*XRRAL*) (GenBank BK000541). Here, we present the first report on the molecular cloning, genomic characterization and over-expression of the *XRRAL* gene.

Results: We found that *XRRAL* was expressed predominantly in testis of both human and macaque. cDNA microarray analysis showed three-fold higher expression of *XRRAL* in macaque testis relative to other tissues. We further cloned the macaque *XRRAL* cDNA (GenBank AB072776) and a human *XRRAL* splice variant from HCT116^{Clone2_XRR} (GenBank AY163836). *In silico* analysis revealed the full-length human *XRRAL*, mouse, rat and bovine *Xrral* cDNAs. The *XRRAL* gene comprises 11 exons and spans 64 kb on chromosome 11q13.3. Human and macaque cDNAs share 96% homology. Human *XRRAL* cDNA is 1987 nt long and encodes a protein of 559 aa. *XRRAL* protein is highly conserved in human, macaque, mouse, rat, pig, and bovine. GFP-*XRRAL* fusion protein was detected in both the nucleus and cytoplasm of HCT116 clones and COS-7 cells. Interestingly, we found evidence that COS-7 cells which over-expressed *XRRAL* lacked Ku86 (Ku80, XRCC5), a non-homologous end joining (NHEJ) DNA repair molecule, in the nucleus. RT-PCR analysis showed differential expression of *XRRAL* after XR in HCT116 clones manifesting significantly different XR responses. Further, we found that *XRRAL* was expressed in most tumor cell types. Surprisingly, mouse *Xrral* was detected in mouse embryonic stem cells R1.

Conclusions: Both *XRRAL* cDNA and protein are highly conserved among mammals, suggesting that *XRRAL* may have similar functions. Our results also suggest that the genetic modulation of *XRRAL* may affect the XR responses of HCT116 clones and that *XRRAL* may have a role in the response of human tumor and normal cells to XR. *XRRAL* might be correlated with cancer development and might also be an early expressed gene.

Background

Treatment with X-radiation (XR) remains a major modality for eradicating cancer and it has been estimated that half of all cancer patients undergo radiotherapy at some point during their treatment [1]. At least partly because of the relevance of radiotherapy to cancer treatment, the genetic control of the expression of resistance, or conversely, sensitivity to XR has been investigated for several decades. It is now generally accepted that there are several components to the cellular response to XR stress: sensing of the DNA damage, cell signaling pathways, and repair of the DNA damage [2]. However, the molecular mechanisms of how cells detect, communicate, and cope with XR-induced DNA damage are not well characterized. There is strong evidence that ataxia telangiectasia mutated (ATM) protein act as damage sensors and that their activation initiates mobilization and/or activation of repair complexes [3]. In addition, the ATM kinase activity mediates the prompt induction of various signaling pathways with some of these events leading to either cellular apoptosis or cell cycle arrest [4]. There is also evidence that non-homologous end joining involving Ku86/Ku70 is likely the major DNA double strand breaks rejoining pathway following XR with a smaller role for homologous recombination in post replicated DNA [5].

Many of the studies on the genetic basis of cellular response to XR have benefited either from mutants that have increased ionizing radiation (IR) sensitivity compared to the parental cell lines or from the study of human genetic syndromes that are associated with increased IR sensitivity (i.e. Fanconi's anemia, Bloom's, and Werner's syndromes) [6,7]. By contrast, mutants or human genetic syndromes associated with increased IR resistance (as exemplified by Li Fraumeni) are rare [8]. Furthermore, Bennett et al [9] recently identified 107 new loci that are associated with response to γ -radiation in yeast. While over 50% of these newly identified putative yeast genes shared homology with human genes, it remains to be established that the human counterparts of these genes are actually associated with similar responses to γ -radiation.

In order to further investigate the genetic basis of tumor cell radioresponse, we have isolated several clones with a wide range of responses to X-radiation from an unirradiated human colorectal tumor cell line, HCT116. Interestingly, we found a cell clone, HCT116^{Clone2_XRR} that was resistant to both fractionated and single dose X-radiation when compared to the parental cells. In addition, we also isolated two other clones: (a) HCT116^{CloneK_XRS} that was more sensitive than the parental cells, and (b) HCT116^{Clone10} that possessed similar X-radiation responses as the parental cells, to both of these types of X-radiation (Qutob, S.S., Ng, C.E., to be published else-

where). Global gene analysis between cells HCT116^{Clone2_XRR} and HCT116^{Clone10} using cDNA microarray identified an unknown GenBank expression sequence tag (EST) accession no. R40588, as one of the spots on the 19,200 human cDNA microarray (University Health Network, Ontario Cancer Institute, Toronto), that was down regulated by approximately two-fold in HCT116^{Clone2_XRR} in comparison with HCT116^{Clone10} cells (Qutob, S.S., Ng, C.E., to be published elsewhere).

Here we describe the *in silico* analysis of R40588 that resulted in the identification of a novel gene, *XRRA1*. We cloned the *XRRA1* full-length cDNA from macaque testis and an *XRRA1* splice variant from HCT116^{Clone2_XRR} cells. We then extended our analysis to identify *XRRA1* in several mammals (i.e. mouse, rat, pig and bovine). This paper also reports the experiments to evaluate *XRRA1* expression in human and macaque normal tissue/organs and in various human cancer and normal cell lines, as well as over-expression of GFP-*XRRA1* fusion protein in HCT116 clones and COS-7 cells. We did immunostaining of Ku86 in the presence of over-expressed GFP-*XRRA1* 24 hours after XR treatment at 4 and 10 Gy of COS-7 cells. This is the first report on the molecular cloning, genomic characterization and over-expression of the novel *XRRA1* gene.

Results

Genomic approaches revealed a novel *XRRA1* gene

Using the EST sequence of R40588 as template, we performed ESTs "walking" either towards the 5' or 3' direction on both the sense and anti-sense strands that we refer to as ESTs-based ORF assembling (EBOA). By EBOA, we acquired a cDNA candidate that putatively contained start-, stop-codon and poly-A signal. ESTs that overlapped each other sequentially were as follows: GenBank accession nos R40588, BQ648278, BU187847, BE782795, BI819448, BQ925455, and BM563944. Out of this ORF candidate, we found 31 ESTs as primary sequences that could be constructed into one potential novel gene *in silico* (Table 1, Fig. 1). We have named this gene as X-ray radiation resistance associated 1 (*XRRA1*) (GenBank accession no. BK000541). BLAST [10] analysis demonstrated that it was a novel gene.

We used human genomic clones RP11-14713 and CMB9-8M21 (GenBank accession nos AP001992 and AP000560) of chromosome 11q13.3 as template for GrailEXP [11] analysis. The analysis predicted 11 exons including a putative promoter region for the human (*Homo sapiens*, Hs) *XRRA1* gene (Fig. 2, Fig. 3A). These 11 exons spliced perfectly to create the mRNA for Hs *XRRA1*. The exon-intron junctions, comprising the 5' splice donor and 3' splice acceptor, follow Kozak consensus (Table 3) [12]. Cloning of the 5' region of *XRRA1* gene that

Table 1: ESTs that were used to build Hs *XRRAl* and Mm *Xrral*.

Organism	EST	Nucleotides	Exons	Genomic Clone	Exons
<i>Homo sapiens XRRAl</i> (1987 nt)	1. BM563944.I	1 – 822	1 – 7	AP001992.4	1 – 5
	2. BE780143.I	1 – 233	1 – 2	AP000560.4	3 – 11
	3. AW962535.I	1 – 175	1 – 2	AP001324.4	5 – 11
	4. BM921116.I	1 – 107	1		
	5. BQ925455.I	1 – 348, 513 – 1066	1 – 3, 4 – 7		
	6. AI651142.I (+/-)	225 – 348, 513 – 726	2 – 3, 4 – 6		
	7. AW448937.I (+/-)	234 – 348, 513 – 726	2 – 3, 4 – 6		
	8. AI651143.I (+/-)	245 – 348, 513 – 726	2 – 3, 4 – 6		
	9. AW197451.I (+/-)	270 – 348, 513 – 726	2 – 3, 4 – 6		
	10. AW895676.I (+/-)	513–609	4 – 5		
	11. BE836017.I (+/-)	513 – 609	4 – 5		
	12. BF810439.I	513 – 589	4 – 5		
	13. AI652186.I (+/-)	526 – 726	5 – 6		
	14. BE313013.I	583 – 1190	5 – 8		
	15. BF891539.I (+/-)	607 – 694	5 – 6		
	16. BI819118.I	897 – 1755	7 – 11		
	17. BQ319609.I	1271 – 1388	8 – 10		
	18. BU620818.I (+/-)	1275 – 1976	9 – 11		
	19. BU620757.I (+/-)	1312 – 1911	9 – 11		
	20. AI057634.I	1474 – 1981	10 – 11		
	21. BQ051594.I	1492 – 1979	10 – 11		
	22. BE782795.I	1500 – 1898, 1939–1987	11		
	23. AW189295.I	1502 – 1979	11		
	24. AI655334.I	1546 – 1976	11		
	25. AA854636.I	1556 – 1981	11		
	26. AI218588.I	1593 – 1979	11		
	27. AI457916.I	1594 – 1981	11		
	28. AW513519.I (+/-)	1614 – 1758	11		
	29. AA961245.I (+/-)	1680 – 1977	11		
	30. BU187847.I	1796 – 1987	11		
	31. AA953084.I (+/-)	1845 – 1977	11		
<i>Mus musculus Xrral</i> (1903 nt)	1. BI990168.I	277 – 870	2 – 7	NW_000328	1 – 11
	2. AV046823.I	715 – 978	6 – 7		
	3. BE650319.I	857 – 1380	7 – 9		
	4. BU610007.I	1134 – 1459	8 – 10		
	5. AA144723.I	1144 – 1396	8 – 10		
	6. AI647383.I	1184 – 1372	8 – 9		
	7. BE956083.I (+/-)	1381 – 1903	9 – 11		
	8. BQ840215.I	1398 – 1649	10 – 11		
	9. BE631695.I	1458 – 1604	10 – 11		
	10. BQ175761.I (+/-)	1458 – 1903	10 – 11		
	11. BE956870.I (+/-)	1471 – 1903	10 – 11		
	12. AI449753.I (+/-)	1600 – 1901	11		
	13. AW125246.I (+/-)	1704 – 1903	11		

comprised the first four exons from HCT116^{Clone2_XRR} and HCT116^{Clone10} revealed that Hs *XRRAl* had those exons. However, in addition to the one from HCT116^{Clone2_XRR}, we obtained one splice variant that lacked exon three and ended on exon four (GenBank accession no. AY163836) (Fig. 3A).

To test whether these exon-intron borders were actually unique to *XRRAl*, we searched for possible *XRRAl* homologues from other organisms. Thus far, we could only

retrieve *Xrral* containing genomic clones from mouse (*Mus musculus*, Mm) (GenBank accession no. NW_000328) and rat (*Rattus norvegicus*, Rn) (GenBank accession no. AC127923). Mm *Xrral* gene is located on chromosome 7. GrailEXP analyses showed that Mm *Xrral* gene also contained 11 exons. Alignment of mouse and rat genomic sequences resulted in information for rat exons, which also consist of 11 exons. Interestingly, all the exon-intron borders of Hs *XRRAl*, Mm and Rn *Xrral* genes are well conserved (Table 3). We again employed

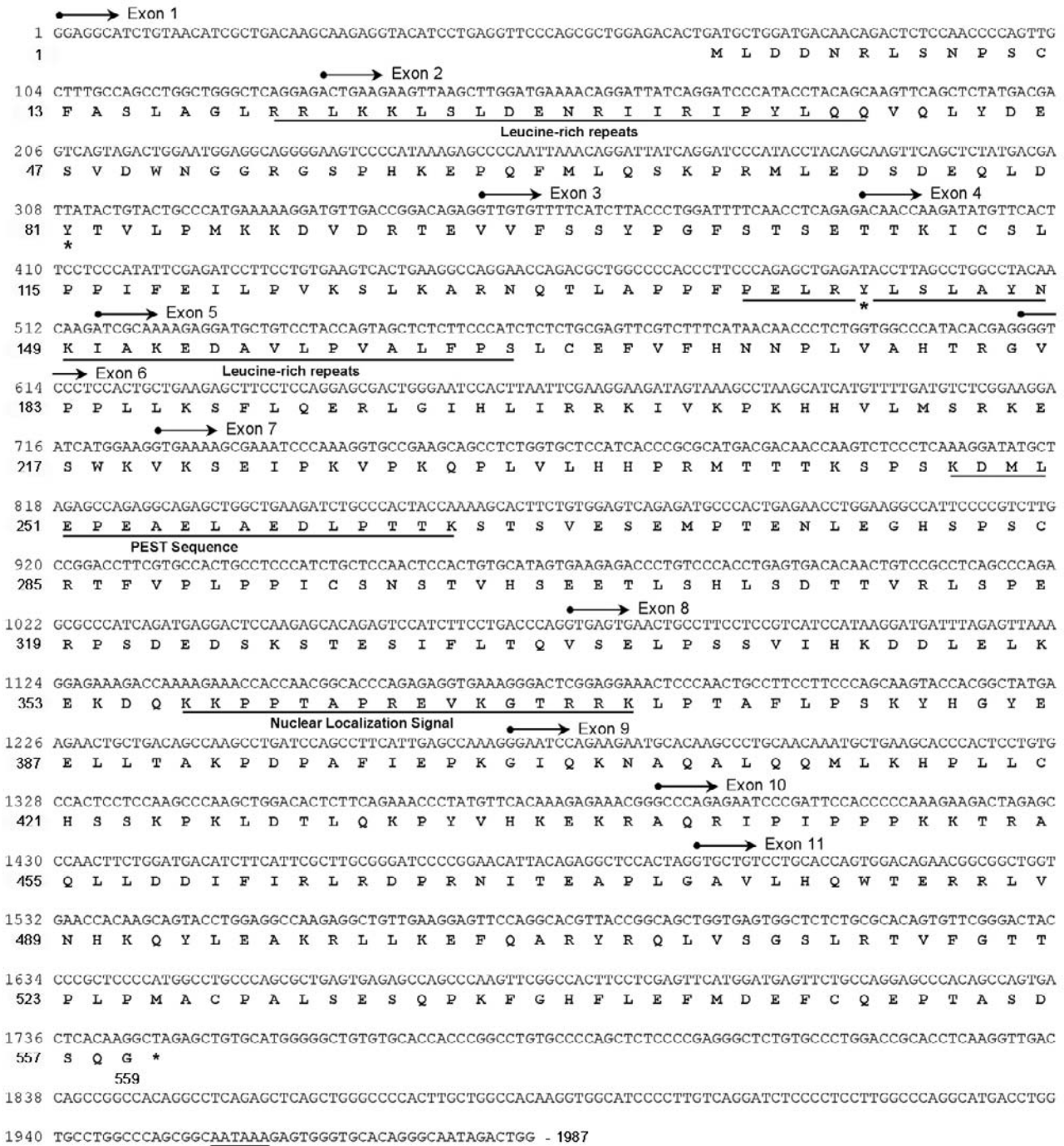


Figure 1
 Human XRR1 cDNA sequences and its translation. The gene comprises 11 exons, and produces 559 aa protein. XRR1 protein consists several motifs i.e. leucine rich repeats, PEST sequence, nuclear localization signal, and two sites of tyrosine phosphorylation (*). Poly A-signal, AATAA is underlined.

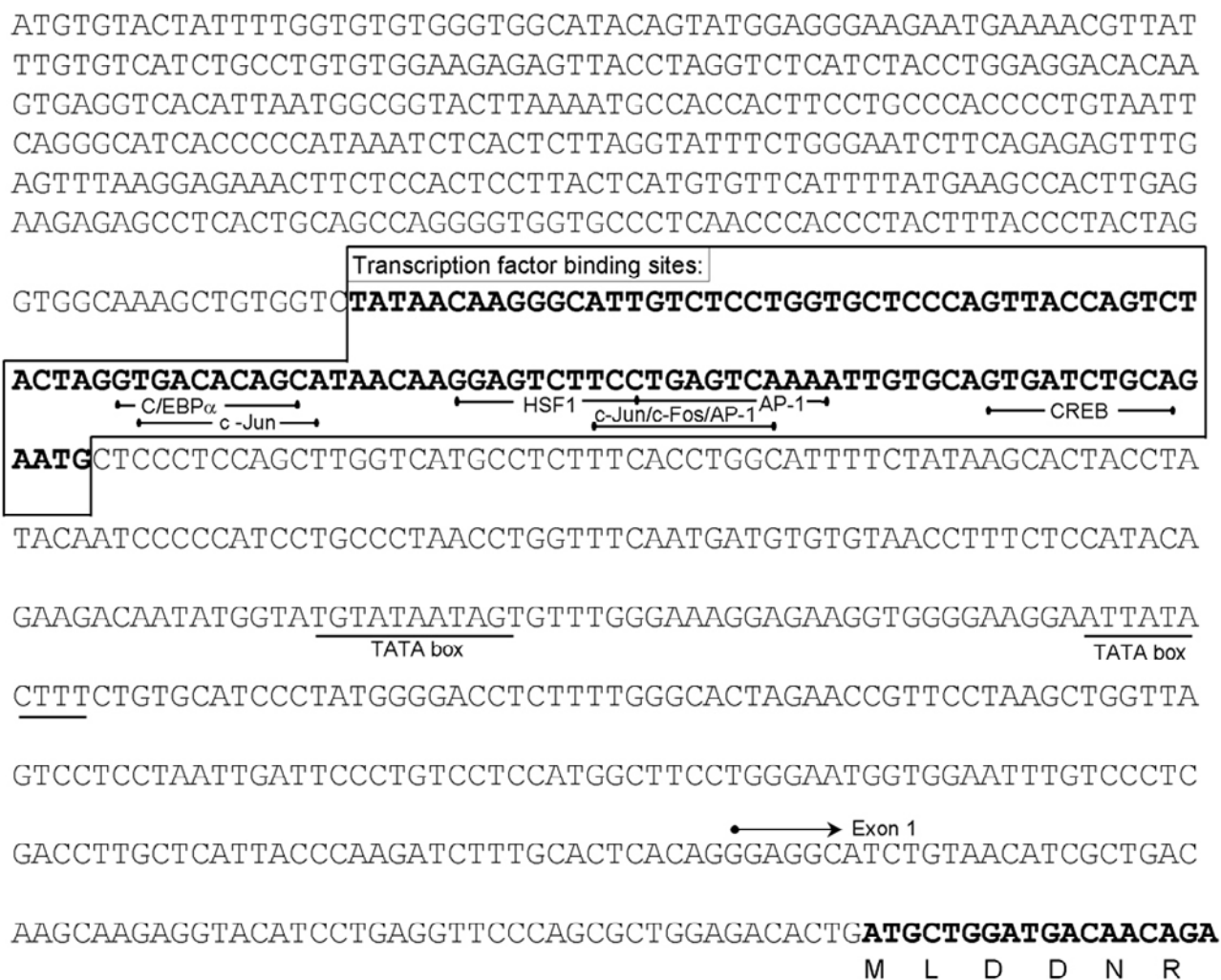


Figure 2

Promoter region of human *XRR1* gene as predicted by GrailExp [11]. Two putative sites of TATA box were found at -506 and -400 from the start codon. Predicted transcription factor binding sites revealed several members of bZIP family such as C/EBPα, c-Jun, c-Fos, AP-1 and CREB.

EBOA to look for all possible ESTs of mouse and other organisms (Table 2). We used the longest human EST containing *XRR1* cDNA sequence as template for the analysis. From the mouse dbEST, we obtained 13 ESTs as primary sequences, which assembled Mm *Xrra1* (GenBank accession no. BK000542). However, unlike the GrailEXP analysis, Mm *Xrra1* lacks exon one and part of exon two. Nevertheless, these two approaches verified the cDNA sequence for Mm *Xrra1*. We could not find any publicly available ESTs for rat. Other ESTs found to be homologues to *XRR1* were from pig (*Sus scrofa*, Sc), horse (*Equus caballus*, Eq) and bovine (*Bos taurus*, Bt). We

assembled Bovine (Bt) *Xrra1* (GenBank accession no. BK000644) from 5 ESTs. The Bt *Xrra1* gene is likely to have 11 exons with truncated exons 4 and 8 (Table 2, Fig. 3A).

We used cDNA libraries from macaque (*Macaca fascicularis*, Mf) brain and testis to obtain Mf *XRR1*. Since we have created and sequenced these libraries, we were able to look for the Mf *XRR1*. We found only three testis clones (QtsA-12093, 10089 and 20433) from 10,400 testis and 53,000 brain cDNAs that were homologous to Hs *XRR1*. One of the clones, QtsA-20433 (GenBank

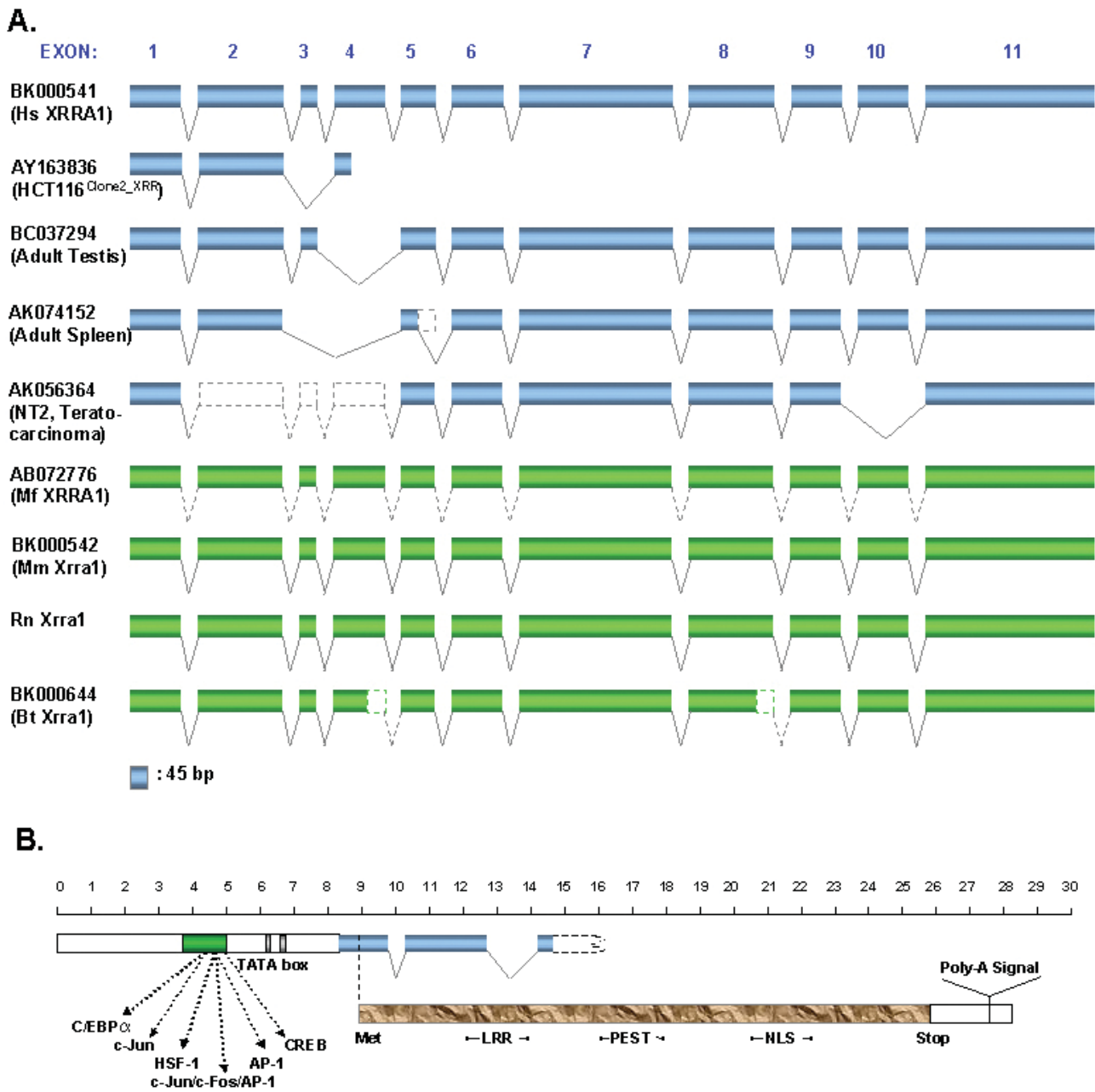


Figure 3
 Representation of the *XRRRA1* genomic structure. (A) The *XRRRA1* gene spans 64 kb and comprises 11 exons. HCT116^{Clone2_XRR} cells contain 2 splice variants, one of which lacks exon 3 and is truncated. Other cDNA clones such as BC032794 lack exon 4, AK074152 lacks exon 3–4 and possible partial deletion of exon 5, and AK056364 lacks exon 2–4 and 10. The gene is located between genomic markers D11S916–D11S911 (80.1–84.2 cM) or at position 625.9 cR of NCBI RH Map. (B) The assembled Hs *XRRRA1* comprises a putative promoter region, start/stop codons and poly-A signal, and predicted a protein with motifs such as LRR, PEST, and NLS. Scale bar is multiplied by 100.

Table 2: ESTs of Mm, Rn, Bt, Sc, and Eq *Xrra1* with corresponding nucleotides and exons to Hs *XRRRA1*

Organism	EST	Corresponding Nucleotides of Hs <i>XRRRA1</i>	Corresponding Exons of Hs <i>XRRRA1</i>	Genomic Clone	Exons
<i>Mus musculus Xrra1</i> (1903 nt)	BI990168.I	312 – 776	2 – 7	NW_000328	I – II
	AV046823.I	660 – 1011	6 – 7		
	BE650319.I	1017 – 1093, 1215–1414	7 – 8, 8 – 10		
	BU610007.I	1215 – 1383, 1400 – 1491	8 – 9, 10		
	AA144723.I	1215 – 1414	8 – 10		
	AI647383.I	1215 – 1383, 1400 – 1491	8 – 9, 10		
	BE956870.I (+/-)	1437 – 1491, 1529 – 1599, 1668 – 1737, 1933–1966	10, 11		
	BQ840215.I	1436 – 1599	10 – 11		
	BE631695.I	1529 – 1599	11		
	BQ175761.I (+/-)	1529 – 1599, 1668 – 1737, 1933 – 1966	11		
	BE956083.I (+/-)	1529 – 1599, 1668 – 1737, 1933 – 1966	11		
	AI449753.I (+/-)	1668 – 1737, 1933 – 1966	11		
	AW125246.I (+/-)	1933 – 1966	11		
	<i>Rattus norvegicus Xrra1</i> (1909 nt)				
<i>Bos taurus Xrra1</i> (1759 nt)	BM106446.I	1 – 422	1 – 4		
	BI540915.I	542 – 703	5 – 6		
	BE722755.I	797 – 1248	7 – 8		
	BM254248.I	1308 – 1760	9 – 11		
	BE751905.I	1366 – 1761	9 – 11		
<i>Sus scrofa Xrra1</i> (970 nt)	BF442510.I	407 – 708	4 – 6		
	BF442490.I	407 – 703	4 – 6		
	BF444411.I	407 – 514, 1208 – 1269	4, 8 – 9		
	BI341438.I	581 – 810, 877 – 978, 1006 – 1079	5 – 7, 7, 7 – 8		
<i>Equus caballus Xrra1</i> (621 nt)	BM735121.I	1336 – 1575, 1658 – 1761, 1902 – 1970	9 – 11, 11, 11		

accession no. AB072776) had the full-coding sequence and showed strong identity to Hs *XRRRA1*, sharing 96 and 95% identities in cDNA and protein sequences, respectively. SIM4 [13] and BLAST analysis showed that Mf *XRRRA1* sequence dispersed properly into 11 exons on human chromosomal band 11q13 (Fig. 3A).

***XRRRA1* is conserved among human, macaque, mouse, rat, pig and bovine**

Multiple alignments of both *XRRRA1* cDNA and protein sequence from human, macaque, mouse, rat, pig, and bovine *Xrra1*s showed a conservative molecule. Percent identities at both the nucleotide and protein level among these mammals resulting from two by two alignments are listed in Table 4. As expected, phylogenetically, human *XRRRA1* is closer to macaque *XRRRA1* and both of them are closer to bovine and pig *Xrra1*s than murine and rat *Xrra1*s. We failed to find possible *XRRRA1* homologues in other organisms ranging from microorganisms, plants, and animals. The latter included organisms whose

genomes have been sequenced completely such as yeast, plasmodium, fruit fly, zebra fish and fugu.

The Hs *XRRRA1* gene produces a novel 559 aa protein (Fig. 3B). The *XRRRA1* protein contains two possible sites of leucine-rich repeats (aa 20–41 and aa 138–164), a PEST sequence at aa 247–264, two tyrosine phosphorylation sites at aa 81 and aa 142, and bipartite nuclear targeting sequences are found at aa 357–373 and aa 485–501. Besides human, Mf *XRRRA1*, Mm, Rn, and Bt *Xrra1*s retain the above-mentioned motifs.

***XRRRA1* responded differentially to XR in clones of varying radiation responses**

The RT-PCR results confirmed earlier observation from our cDNA microarray analysis that unirradiated HCT116^{Clone2_XRR} cells had lower basal expression of *XRRRA1* than unirradiated HCT116^{Clone10} cells (Fig. 4, Table 5). However, *XRRRA1* expression in HCT116^{Clone2_XRR} cells increased almost immediately (~10 minutes) after XR and decreased thereafter. By

Table 3: Exon-intron junctions of human (Hs) *XRRAl*, murine (Mm) *Xrral* and rat (Rn) *Xrral*

Exon No.		Exon Size (bp)	5' Splice Donor	Intron No.	Intron Size (bp) ^a	3' Splice Acceptor
1	Hs <i>XRRAl</i>	128	GGCTCAGGAGgtaaagccataa			ttgcactcacagGGAGGCATCT
	Mm <i>Xrral</i>	133	GGCTCAGGAGgtattgtcacag			ctgtgccacagGGAGGCATCC
	Rn <i>Xrral</i>	133	GGCTCAGGAGgtattatcacag			ctgtgccacagGGAGGCATCT
2	Hs <i>XRRAl</i>	219	GACCCGACAGgtgagtacacc	1	687	cccttaattgagACTGAAGAAG
	Mm <i>Xrral</i>	206	GACCCGACAGgtgagctatggc		685	cccttaattgagACTGAAGAAG
	Rn <i>Xrral</i>	206	GACCCGACAGgtgagcccgccc		-	tccttaattgagACTGAAAGAAG
3	Hs <i>XRRAl</i>	43	AACCTCAGAGgttaggaactgac	2	43215	cttctgtttcagAGGTTGTGTT
	Mm <i>Xrral</i>	44	AACCTCAGAGgttagggagcct		4118	tttctgtttcagAGGTTGTGTT
	Rn <i>Xrral</i>	44	AACCTCAGAGgttagggagacc		-	tttatgtttcagAGGTTGTGTT
4	Hs <i>XRRAl</i>	127	CTACAACAAGgtgactttctgc	3	3696	cttcttctcagACAACCAAGA
	Mm <i>Xrral</i>	126	CTACAACAAGgtgaactctttg		3706	tttctctcagACAGCCAAGG
	Rn <i>Xrral</i>	126	CTACAACAAGgtaactgtcttt		-	ttcctctcagACAACCAAGG
5	Hs <i>XRRAl</i>	96	CATACACGAGgtatagtcccc	4	7073	cattcattagagATCGCAAAG
	Mm <i>Xrral</i>	94	CACACACGAGgtatggggcca		4393	cattcattagagATCGCAAAG
	Rn <i>Xrral</i>	94	CACACACGAGgtatggggcca		-	tgcactttccagATCGCAAAGG
6	Hs <i>XRRAl</i>	123	ATCATGGAAGgtagggtctcca	5	779	tcattggcaccagGGGTCCCTCC
	Mm <i>Xrral</i>	116	GTCACGGAAGgtagccttcca		736	cccttcataccagGGATCCACAC
	Rn <i>Xrral</i>	116	ATCGCGGAAGgtagccttcca		-	cccttcacaccagGGATCCCACC
7	Hs <i>XRRAl</i>	351	CCTGACCCAGgtacctgtatcc	6	2622	tcctcatgacagGTGAAAAGCG
	Mm <i>Xrral</i>	324	CCTGACCCAGgtgacagccccc		2256	tcctcatccagGTGAAGACCT
	Rn <i>Xrral</i>	324	CCTGACCCAGgtgacagccccc		-	tcctcatcagGTGAAAACCT
8	Hs <i>XRRAl</i>	202	GAGCCAAAGgtatgtgaggc	7	2839	tcctgggcacagGTGAGTGAAC
	Mm <i>Xrral</i>	196	GAGCCAAAGgtatgggattaa		1421	ttcctggcacagGTGAATGAGC
	Rn <i>Xrral</i>	199	GAGCCAAAGgtacgggattaa		-	ttcctggcacagGTGAATGAGC
9	Hs <i>XRRAl</i>	117	AGAGAAACGGgtaaacctccag	8	788	ttcttgccttagGGAATCCAGA
	Mm <i>Xrral</i>	116	GGAGAAGAGgttagcacttca		594	tgcactctcagGCATCCAGAA
	Rn <i>Xrral</i>	116	AGAGAAGAGgttagcacttca		-	tgcactctcagGCATCCAGAA
10	Hs <i>XRRAl</i>	108	GCTCCACTAGgtacggctctgc	9	207	accttctgccagGCCAGAGAA
	Mm <i>Xrral</i>	106	GCTCCACTGGgtatgggtccag		169	tgcactctcagGCCGGGAGGA
	Rn <i>Xrral</i>	106	GCTCCACTGGgtatgggtccag		-	cgtttctgccagGTTGCGAGGA
11	Hs <i>XRRAl</i>	484		10	397	cttttctgtagGTGCTGTCTCT
	Mm <i>Xrral</i>	445			294	tcattctgtagGCACTGTGTT
	Rn <i>Xrral</i>	445			-	tcattctgtagGCGCTGTGTG

^aThe intron sizes of Rn *Xrral* gene could not be determined since the sequencing of rat genomic clone CH230-188L13 (GenBank AC127923) containing the gene was in progress. Nevertheless, their splicing sites can be identified, thus the exon sizes are also known.

Table 4: Percent identities of *XRRAl* cDNA and protein among several mammals

Percent Identity (Protein)*	ORGANISM	Percent Identity (cDNA)*					
		Hs <i>XRRAl</i>	Mf <i>XRRAl</i>	Mm <i>Xrral</i>	Rn <i>Xrral</i>	Sc <i>Xrral</i>	Bt <i>Xrral</i>
	Hs <i>XRRAl</i>	-	96.0	75.9	75.9	83.4	76.8
	Mf <i>XRRAl</i>	95.0	-	76.2	76.3	83.6	77.2
	Mm <i>Xrral</i>	71.8	74.1	-	93.6	74.6	70.9
	Rn <i>Xrral</i>	69.6	71.7	90.2	-	74.7	70.1
	Sc <i>Xrral</i>	77.7	79.4	67.7	62.6	-	86.4
	Bt <i>Xrral</i>	68.3	69.5	62.0	61.6	70.1	-

*Hs, *Homo sapiens*; Mf, *Macaque fascicularis*; Mm, *Mus musculus*; Rn, *Rattus norvegicus*; Sc, *Sus scrofa*; Bt, *Bos taurus*.

contrast, HCT116^{Clone10} cells down regulated *XRRRA1* expression approximately ten minutes following XR. Interestingly, *XRRRA1* expression in HCT116^{CloneK_XRS} cells was initially similar to HCT116^{Clone10} cells but regained the basal levels by 24 hours following XR.

***XRRRA1* was expressed predominantly in the testis in human and macaque**

We carried out DNA microarray where PCR-amplified QtsA-20433 (Mf *XRRRA1*) was included. Because we found that Mf *XRRRA1* was more commonly present in testis than in brain cDNA libraries, we further investigated whether Mf *XRRRA1* was predominantly expressed in the testis. The ratio of Mf *XRRRA1* expression in testis to that in mixed tissues was 3.02. We also compared the expression of *XRRRA1* between human and macaque testis. The ratio of *XRRRA1* expression in human testis to macaque testis was 1.04. In addition, we examined Hs *XRRRA1* expression from various normal human tissues/organs. We found that Hs *XRRRA1* was expressed predominantly in testis followed by prostate and ovary (Fig. 4, Table 5). Other tissues/organs such as peripheral blood leukocyte, spleen, thymus, small intestine and colon demonstrated low expression of Hs *XRRRA1*.

***XRRRA1* was expressed ubiquitously in various types of cancer cells**

We evaluated the expression of Hs *XRRRA1* in various cancer cell lines (neuroblastoma, glioma, breast, lung, leukemia, renal, ovarian, prostate, another colorectal). *XRRRA1* was present in all of those cells, although the expression level was variable (Fig. 4, Table 5). We also detected *XRRRA1* expression in immortalized normal fibroblast AG1522 and COS-7 cells, as well as in a dermal microvascular endothelial cell line (HDMEC). Surprisingly, besides mouse fibrosarcoma cells and tumor biopsy from a mouse model of fibrosarcoma, we were also able to detect Mm *Xrra1* expression in pluripotent cells such as murine embryonic stem cells R1 (Fig. 4, Table 5).

Over-expression of GFP-*XRRRA1* fusion protein was only achieved transiently and showed nucleo-cytoplasmic protein distribution

To understand further the possible function of the *XRRRA1* gene, we fused the *XRRRA1* cDNA immediately downstream of a green fluorescent protein (GFP) cDNA. We over-expressed the GFP-*XRRRA1* in HCT116 clones, but after 48 hours post-transfection the fluorescence clearly decreased both in the number of cells and intensity of fluorescence. We obtained similar results when we over-expressed GFP-*XRRRA1* in COS-7 cells. After three weeks selection in 500 µg/ml G418, very few COS-7 cells remained fluorescent (Fig. 5). Only transient expression of the GFP-*XRRRA1* was observed in both types of cells. The fluorescence of the GFP-*XRRRA1* did not show an exclusive

nuclear localization (although the predicted *XRRRA1* protein contains NLS motif). Instead, the fluorescence appeared in most cells to be nucleo-cytoplasmic (Fig. 5).

Over-expressed COS-7 cells with GFP-*XRRRA1* might modulate Ku86 expression

Ku86 was exclusively localized in nuclei with or without XR (Fig 6). The over-expression of GFP-*XRRRA1* abolished nuclear immunostaining of Ku86 in COS-7 (Fig 6A). Immunostaining of α -Tubulin, as additional control for the experiment, did not change in the presence of GFP-*XRRRA1* (Fig 6B). The secondary antibody conjugated with Cyanine-3 (Cy3) was used for both Ku86 and α -Tubulin immunostaining.

Discussion

EBOA and *in silico* analysis helped us to identify a novel gene *XRRRA1* from a previously unknown EST R40588 not only in human, but also in mouse, bovine, and rat. Recently, several clones that contained Hs *XRRRA1* spliced variants have been deposited to GenBank database by others. Hs *XRRRA1* clone from testis (GenBank accession no. BC037294) lacked exon 4; the one from spleen (GenBank accession no. AK074152) lacked exons 3, 4 and a possible partial deletion of exon 5, and the one from NT2 cells (GenBank accession no. AK056364) lacked exons 2, 3, 4, and 10 (Fig. 3A). The testis clone with GenBank no. BC037294 did not appear to have a proper open reading frame. EBOA and GrailExp methods failed to produce a start site further upstream of Hs *XRRRA1* (GenBank no. BK000541).

Surprisingly, when we searched from approximately 63,400 macaque brain and testis cDNAs, we found only three testis clones that were homologous to Hs *XRRRA1*, suggesting that the Mf *XRRRA1* gene is expressed only at a very low level in brain. The Mf *XRRRA1* is highly homologous with Hs *XRRRA1*. Because the Hs *XRRRA1* gene consists of 11 exons, it is likely that the Mf *XRRRA1* gene also contains 11 exons (see Fig. 3A). In general, the *XRRRA1* gene seems to be highly conserved among mammals (i.e. human, macaque, mouse, rat, pig, and bovine), suggesting that it has similar function(s). Moreover, we were unable to find any convincing evidence of *XRRRA1* gene from fully sequenced genomic DNA of fish, fly, worm, yeast and microbes. This suggests that *XRRRA1* might be specific for, or evolutionary-enriched in, mammals. A specific role(s) for *XRRRA1* in mammals was further supported by the observation that the predicted protein sequences for motifs such as LRR, PEST, and NLS, as well as Tyr phosphorylation sites, are preserved among the above-mentioned mammals. Additionally, these motifs suggested that the *XRRRA1* protein may interact dynamically with other proteins, or might be subjected to rapid degra-

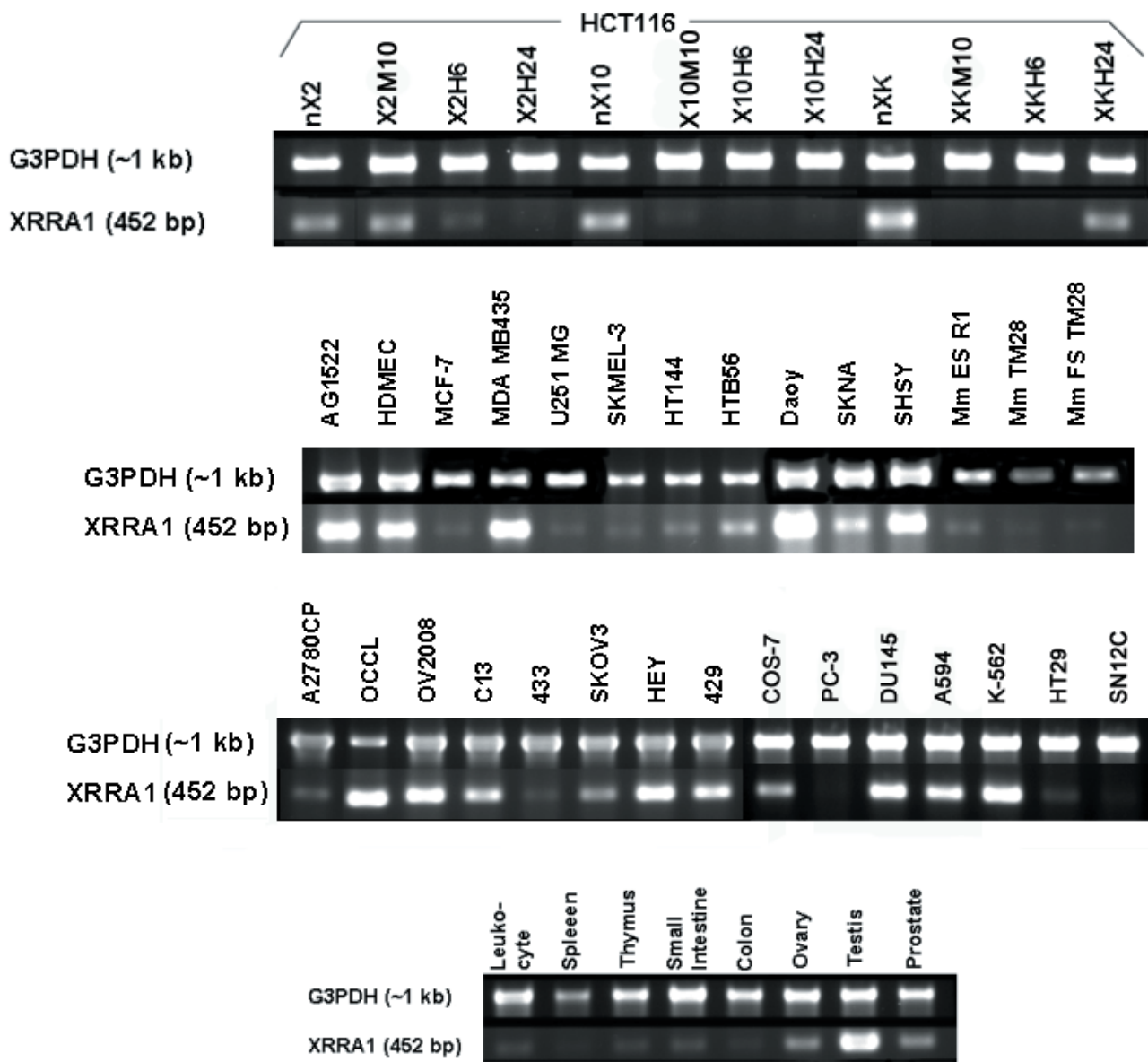


Figure 4

RT-PCR of *XRRRA1* and a house-keeping gene *G3PDH* from HCT116 clones treated with X-radiation, various cancer and normal cells, and normal tissues/organs. The same set of primers was used to amplify corresponding mRNA from mouse embryonic stem cells and fibrosarcoma cells/tumor.

dation via the proteasomal pathway, or might suggest a possible role for *XRRRA1* in cellular signaling.

Although the protein contains a NLS motif, it appears that *XRRRA1* is not exclusively located in the nucleus, as shown by the over-expression of the GFP-*XRRRA1* fusion protein. HCT116 clones and COS-7 cells containing the fusion

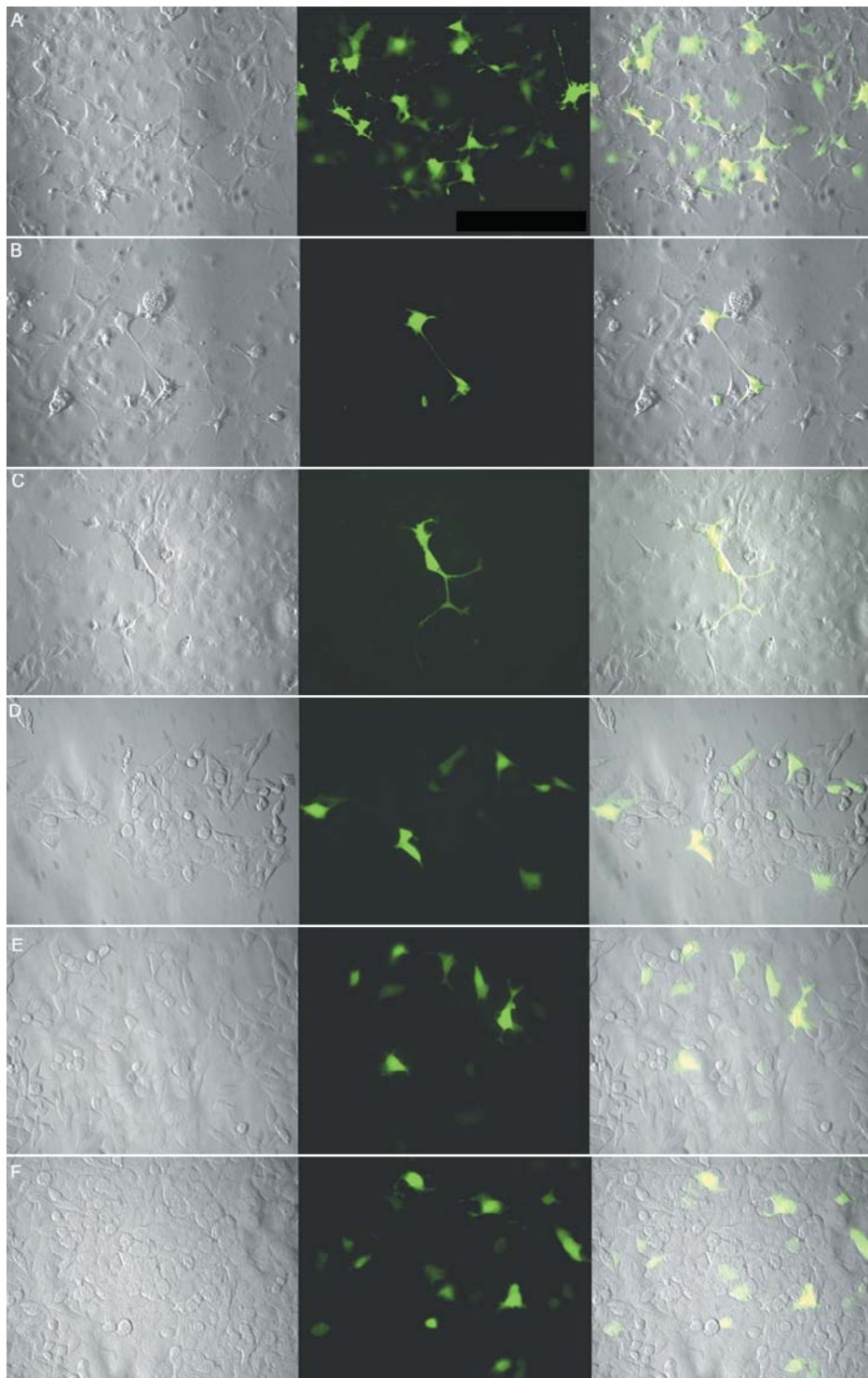
protein (either with full length or truncated *XRRRA1* protein) had lost the auto-fluorescence. This suggested that the protein concentration above the basal expression levels of *XRRRA1* might be lethal to the cells.

It is noteworthy that the expression of *XRRRA1* in HCT116 clones was variably affected by 4 Gy XR. The results sug-

Table 5: Differential expression of human XRR1 in XR-treated HCT116 clones, in normal tissues/organs and cells, as well as in various cancer cell types.

Cells/Tissues/Organs	Relative Expression Level (Normalized against G3PDH)*	Cell/Tissue/Organ type; Cancer Type
HCT116Clone2_XRR	+++	Colorectal, more resistant to X-radiation than HCT116
HCT116Clone10	++++	Colorectal, similar radiation response to HCT116
HCT116CloneK_XRS	+++++	Colorectal, more sensitive to X-radiation than HCT116
HCT116Clone2_XRR	+++	Without X-radiation
HCT116Clone2_XRR M10	++++	10 Minutes after X-radiation
HCT116Clone2_XRR H6	++	6 Hours after X-radiation
HCT116Clone2_XRR H24	+	24 Hours after X-radiation
HCT116Clone10	++++	Without X-radiation
HCT116Clone10 M10	+	10 Minutes after X-radiation
HCT116Clone10 H6	+	6 Hours after X-radiation
HCT116Clone10 H24	+	24 Hours after X-radiation
HCT116CloneK_XRS	+++++	Without X-radiation
HCT116CloneK_XRS M10	+	10 Minutes after X-radiation
HCT116CloneK_XRS H6	+	6 Hours after X-radiation
HCT116CloneK_XRS H24	++++	24 Hours after X-radiation
Testis	+++++++	Normal
Prostate	+++++	Normal
Ovary	+++++	Normal
Leukocyte	++	Normal
Spleen	+	Normal
Thymus	++	Normal
Small Intestine	++	Normal
Colon	+	Normal
AG1522	++++	Normal fibroblast (immortalized)
COS-7	+++	Normal fibroblast (immortalized)
HDMEC	++++	Normal microvascular endothelial (primary)
MCF7	+	Breast cancer
MDA MB435	+++++	Breast cancer
U251MG	+	Glioma
SKMEL-3	+	Melanoma
HT144	+	Melanoma
HTB56	+++	Lung cancer
A594	++++	Lung cancer
Daoy	++++	Neuroblastoma
SKNA	+++	Neuroblastoma
SHSY	++++	Neuroblastoma
A2780CP	+	Ovarian cancer, resistant to cisplatin
OCCL	++++	Ovarian cancer
OV2008	++++	Ovarian cancer
C13	+++	Ovarian cancer
433	+	Ovarian cancer
SKOV3	++	Ovarian cancer
HEY	++++	Ovarian cancer
429	+++	Ovarian cancer
PC-3	+	Prostate cancer
DU145	+++++	Prostate cancer
SN12C	+	Renal cancer
HT29	+	Colorectal cancer
K-562	+++++	Leukemia
Mm TM28	+++	(Murine) Fibrosarcoma
Mm FS-TM28	+	(Murine) Fibrosarcoma biopsy
Mm ES-R1	++	(Murine) Embryonic Stem Cell

*+, very low; ++, low; +++ moderate; >++++, high.

**Figure 5**

GFP-XRRA1 fusion protein in COS-7 and HCT116 clones. A, B, and C are transfected COS-7 cells. D, E, and F are transfected HCT116^{Clone2_XRR} cells. Control with GFP cassette alone is on panel A and D. Expression of GFP-truncated XRRA1 is shown in panels B and E. Expression of GFP-full length XRRA1 is shown in panels C and F. Transfected COS-7 cells were examined by fluorescence microscopy after 3 weeks of G418-selection. Expression of GFP-XRRA1 fusion protein was detected only transiently in HCT116 clones. The leftmost panel is a phase-contrast picture of the cells. The middle panel is green fluorescence shown with FITC filter. The rightmost panel is an overlay of the two previous panels. Magnification used was 400 \times .

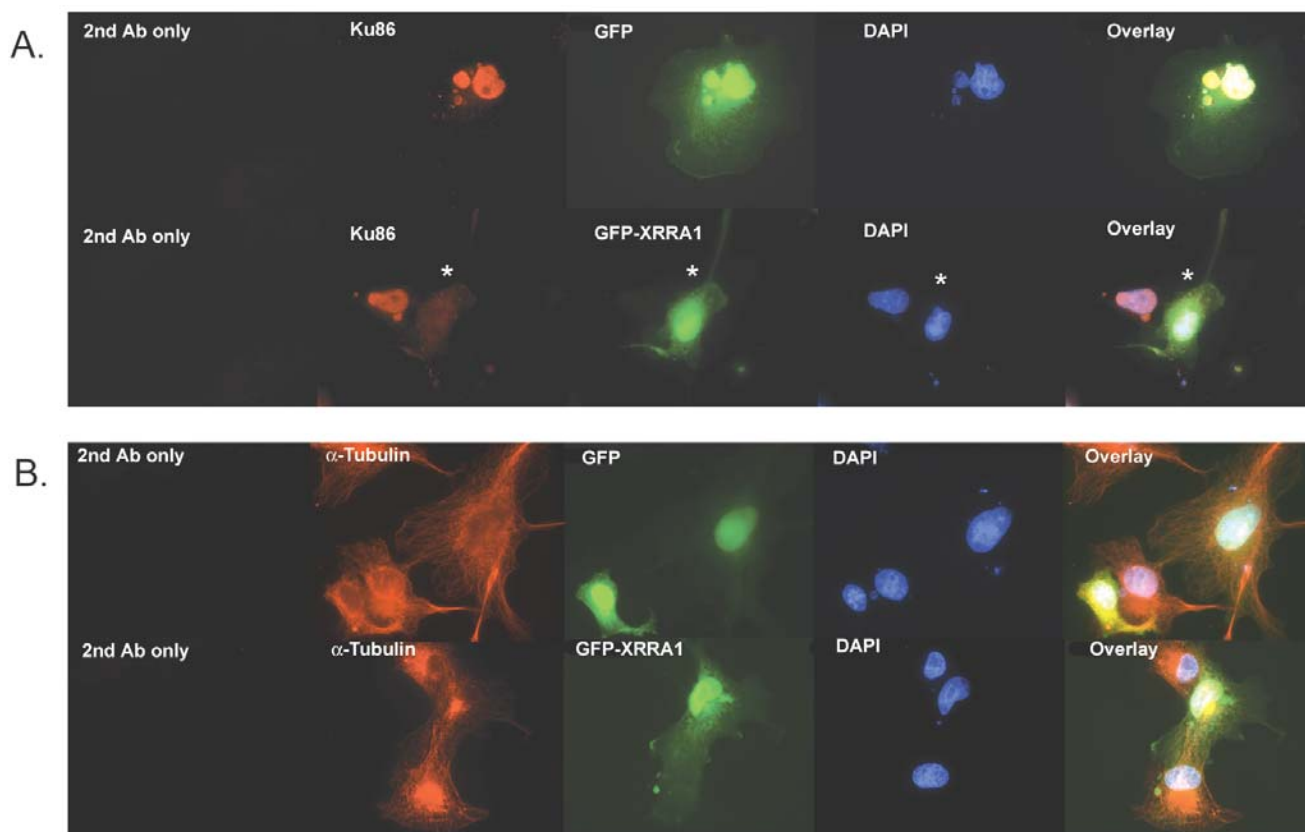


Figure 6

Immunocytochemistry of COS-7 cells over-expressing GFP-XRRA1 with Ku86 (A) and α -Tubulin (B). (A) Ku86 (red fluorescence) was localized in nuclei. Nuclear Ku86 immunostaining was eliminated (asterisk) in the presence of GFP-XRRA1 (green fluorescence), but not with the GFP alone. (B) Neither GFP nor GFP-XRRA1 changed the immunostaining of α -Tubulin (red fluorescence). DAPI-stained nuclei are shown in blue fluorescence. Magnification used was 1000 \times .

gested that the *XRRA1* gene might be involved in the immediate response following XR and might further be linked to XR resistance and/or sensitivity. Thus the return of *XRRA1* to almost pre-irradiated basal levels by 24 hours post-irradiation in radiosensitive HCT116^{CloneK_XRS} cells (but not in the other two clones) might be necessary for the subsequent manifestation of enhanced sensitivity to XR by this clone. One possibility is that the *XRRA1* gene may play a role either in the expression of cell death and/or signaling of DNA damage following XR stress. Therefore, genetic modulation of the expression of *XRRA1* in these clones may, specifically lead to either enhanced or decreased XR-induced lethality, and, generally, may be relevant for determining cellular response to XR in both tumor and normal cells.

In mammalian cells, DNA double strand breaks caused by XR are preferentially repaired by non-homologous end

joining (NHEJ) mechanism. The major molecules involved in the NHEJ pathway are heterodimeric DNA end-binding complexes Ku86/Ku70 [14]. Therefore, we used Ku86 as the first candidate to test whether *XRRA1* is involved in the modulation of the NHEJ pathway. The immunocytochemistry study on both HCT116^{Clone2_XRR} and COS-7 cells showed that there was no significant modulation of Ku86 with XR. However, COS-7 cells over-expressing GFP-XRRA1 were devoid of nuclear Ku86. This phenomenon suggested that over-expression of *XRRA1* might have resulted in the down-regulation of Ku-86. Further studies are required to determine whether there is a negative correlation between *XRRA1* and Ku86 expressions during cellular response to XR.

The varying expression of *XRRA1* following XR described above could be related to the role of transcription factors. In fact, we were able to detect a possible region between

nt -506 and -400 from the start codon for transcription factor binding sites that regulate the expression of *XRRA1*. These factors were C/EBP α , HSF-1, c-Jun, c-Fos, AP-1, and CREB. Interestingly, most of the previously mentioned transcription factors are members of the bZIP superfamily. The latter is associated with various functions, including mediating G1 arrests [15,16], regulating responses against environmental stresses including IR and UV [17], acting as an immediate-early response factor [18], controlling wide range plasticity processes [19], and serving as a promoter element that mediates transcriptional activation in response to increased levels of intracellular essential secondary messenger cAMP [20]. Thus, putative binding sites for these transcription factors further strengthen the suggestion that the expression of *XRRA1* was rapidly affected after XR treatment.

XRRA1 was expressed predominantly in the testis in both human and macaque. It may be relevant to note that the testis is generally regarded as one of the most sensitive organs to XR [21]. Thus upregulation of *XRRA1* in an XR-sensitive organ would appear to be generally consistent with our observation that it is downregulated in the XR-resistant HCT116^{Clone2_XRR} cells. Because there was comparable expression level of *XRRA1* in both human and macaque, it suggests that there is a functional necessity for *XRRA1* in mammalian testis (i.e. *XRRA1* might serve as a testis-specific molecule). By contrast, the low expression of *XRRA1* in healthy colon and relatively much stronger expression of *XRRA1* in HCT116 cells, may suggest an upregulation of this gene in cancer development. The ubiquitous expression of *XRRA1* in numerous cancer cells and in immortalized normal cells might be indicative of a role of this gene in tumor development.

Interestingly, from the SAGEmap, we identified three tags that specifically represent *XRRA1* anchored with restriction enzyme *Nla*III. The tags were TATTCAGGGG, ACCTGGTGCC, and GAATCAAGTG. SAGE libraries where *XRRA1* was less than 20 tags per million were excluded. We found that the *XRRA1* was present in mammary gland epithelium ductal *in situ* carcinoma, normal cerebellum, normal gastric body epithelium, well differentiated oligodendroglioma, pancreatic epithelium ductal adenocarcinoma, metastasis mammary gland carcinoma, ovarian clear cell poorly differentiated carcinoma, brain glioblastoma multiform cell line, ovarian serous adenocarcinoma, mammary gland ductal *in situ* high grade carcinoma, prostate carcinoma, brain juvenile ependymoma, and medulloblastoma cerebellum. The foregoing data further suggested that *XRRA1* might be correlated with carcinomas in breast, brain, prostate, pancreas and ovary. Finally, the expression of Mm *Xrra1* expression in mouse embryonic stem (ES) cells (R1) as well as in mouse fibrosarcoma

cells and in fibrosarcoma biopsy suggest that *XRRA1* might function as an early expressed gene.

Conclusions

XRRA1 is a novel molecule that is expressed selectively in normal healthy tissues/organs. It is expressed at relatively higher levels in primary sex organs such as testis (of both human and macaque), prostate and ovary. The expression of *XRRA1* in normal proliferative cells, embryonic stem cells, and various tumor cells is also generally high and comparable to testicular expression of *XRRA1*. These findings suggest that *XRRA1* expression may be important for cell proliferation, development, and differentiation as well as carcinogenesis. In regard to XR, we found that *XRRA1* expression was rapidly modulated after treatment, suggesting the potential involvement of this gene/protein in the manifestation/expression of radioresistance/sensitivity by tumor cells such as human colorectal cancer cells. Over-expression of GFP-*XRRA1* fusion protein was located in both nucleus and cytoplasm of HCT116 clones or COS-7 cells. A possible correlation with NHEJ pathway for repairing DNA double strand break after XR is shown by the lack of Ku86 immunostaining in COS-7 cells that over-expressed the GFP-*XRRA1*. Further experiments to determine the function of *XRRA1* in DNA damage sensor, repair and apoptosis following radio- and or chemotherapy are ongoing. Also the function of *XRRA1* in carcinogenesis as well as embryogenesis and reproduction biology needs to be elucidated.

Methods

Normal/Cancer cell cultures

Clones of colorectal cancer cells (HCT116^{Clone2_XRR}, HCT116^{Clone10}, and HCT116^{CloneK_XRS}), normal fibroblast cells (COS-7 and AG1522), breast cancer cells (MCF-7 and MDA MB435), glioma cells (U251 MG), melanoma cells (SKMEL-3 and HT144), lung cancer cells (HTB56 and A549), ovarian cancer cells (A2780CP and A2780S), prostate cancer cells (PC-3 and DU145), leukemia cells (K-562), colorectal cancer cells (HT29), renal cancer cells (SN12C), and mouse fibrosarcoma cells (TM28) were grown in DMEM/Ham's F12 1:1 mix (Wisent Inc., St. Bruno, QC, Canada) supplemented with 10% fetal bovine serum (FBS) (Wisent Inc.) and 15 mM HEPES in a humidified atmosphere of 95% air, 5% CO₂ at 37°C. Various individuals from the ORCC, Ottawa, Canada, kindly provided us with the cells. They were: J.C. Bell (COS-7, PC-3, DU145, K-562, HT29, and SN12C cells), C.L. Addison (MCF-7 and MDA MB435 cells, neuroblastoma cells (Daoy, SKNA, and SHSY), normal human dermal microvascular cells (HDMEC)), HC Birnboim (TM28 cells), B. Vanderhyden (ovarian cancer cells OCCL, OV2008, C13, SKOV3, 433, HEY, and 429), and M. McBurney (mouse embryonic stem cells R1). H.C. Birnboim also donated a C57BL/6 mouse with a solid fibrosarcoma (TM28)

growing in the flank. A. Gatignon (Lady Davis Insitute, Montreal, Canada) kindly provided the U251 MG cells. Clones of HCT116, AG1522, SKMEL-3, HT144, A2780CP, and A2780S cells were from our own laboratory collection (C.E. Ng, ORCC, Ottawa, Canada).

Cloning and sequencing of Hs XRRAl splice variant

A specific primer pair was created to amplify the 5' region of the XRRAl cDNA. They were 5'-GCGCTGGAGACACTGATGCTGG ATGACAAC-3' and 5'-GGCCAGGCTAAGGTATCTCAGCTCTGGG-3'. These primers generated a product of 452-bp that comprised the first 4 exons. Total RNA from HCT116^{Clone2_XRR} and HCT116^{Clone10} cells were used as template for RT-PCR. PCR fragments were gel purified using Gel Extraction Kit (Qiagen Inc., Mississauga, ON, Canada) and cloned into pTZ57R plasmid using InsT/Aclone PCR Product Cloning Kit (MBI Fermentas, Burlington, ON, Canada). Sequencing of the clones was performed by DNA Sequencer model 4000L according to the manufacturer's protocol (LI-COR Biosciences, Lincoln, NE, USA) using M13 primer.

Construction of macaque cDNA libraries and DNA sequencing of their cDNA inserts

Oligo-capped cDNA libraries were made from macaque brain and testis. cDNAs were isolated according to the method described previously [22,23]. The 5'-end sequences of the clones were sequenced using ABI 3700 sequencer (Applied Biosystems, Tokyo, Japan) and categorized using DYNACLUSt (Dynacom Co., Chiba, Japan) based on a BLAST search against the GenBank database. The entire sequences of clones were determined by the primer walking method with an ABI PRISM BigDye Terminator Sequencing kit (Applied Biosystems) according to the manufacturer's instructions.

Construction of plasmid expressing Mf XRRAl fused to GFP

Macaque cDNA clone of QtsA-20344 was found from the cDNA libraries to contain Mf XRRAl transcript. A 1709-bp *XhoI* fragment of Mf XRRAl was removed from pME18S-FL3 and sub-cloned into *XhoI* sites of pEGFP-C1 (BD Biosciences, Mississauga, ON, Canada), immediately downstream of the GFP sequence (pFM1709). To create a truncated Mf GFP-XRRAl (pFM584), 1.1-kb *EcoRI* fragment was removed from pFM1709 leaving a 584-bp of the 5' XRRAl cDNA fused with GFP.

Transfection of GFP-XRRAl into HCT116^{Clone2_XRR}, HCT116^{Clone10}, HCT116^{CloneK_XRS}, and COS-7 cells

HCT116 clones and COS-7 cell were transfected with a mixture of pFM584, pFM1709 or pEGFP-C1 and lipid complexes FuGENE 6 (Roche Diagnostics, Laval, QC, Canada) transiently or stably. Briefly, HCT116 clones and COS-7 were grown on cover slips in a 6-well plate and

reached 60–70% confluences before transfection. The ratio of FuGENE 6 and pure plasmid was 6:1 in serum free medium. G418 (Sigma-Aldrich, Oakville Ltd., ON, Canada) at a concentration of 400 µg/ml was used for selection. Cells were fixed with 3.7% formaldehyde in PBS for 10 min, and then washed three times with 1x PBS. Coverslips were mounted upside down onto slides with Dako Fluorescent Mounting Medium (DAKO, Carpinteria, CA, USA). Visualization was performed using a fluorescence microscope Axioskop 2 MOT (Carl Zeiss MicroImaging Inc., Thornwood, NY, USA). Images of cells were captured with a CCD camera fitted with a FITC filter.

Immunocytochemistry

Transfected COS-7 and HCT116^{Clone2_XRR} cells with pFM1709 or pEGFP-C1 were grown on cover slips until they reached 70–80% confluency before being treated with 4 or 10 Gy XR. Cells were fixed in 2% formaldehyde in 1x PBS for 15 min 24 h after XR treatment. Cells were then permeabilized with 0.2% Triton X-100 for 10 min. Ku86 antibody was obtained from Santa Cruz Biotechnology, Inc., Santa Cruz, CA, USA. The secondary antibody was conjugated with Cy3 (Amersham Biosciences Corp, Baie d'Urfe, QC, Canada). Controls for the immunostaining were the secondary antibody alone, and control for the experiment was α -Tubulin antibody that was obtained from Calbiochem, San Diego, CA, USA.

RT-PCR

Total RNAs of normal/cancer cells were extracted using RNAeasy kit (Qiagen Inc.) according to the manufacturer's instructions. TRIZOL Reagent (Invitrogen Inc., Burlington, ON, Canada) was used to isolate RNA of mouse fibrosarcoma tumor biopsy. RNAs of human peripheral blood leukocyte, spleen, thymus, small intestine, colon, ovary, testis and prostate were purchased from BD Biosciences. First Strand cDNA Synthesis kit (MBI Fermentas) was used to create first strand cDNA from RNA samples. A specific primer pair that amplified ~1 kb house keeping gene glyceraldehyde-3-phosphate dehydrogenase (*G3PDH*) was used as the control. The primers were 5'-TGAAGGTCGGTGTGAACGGATTTGGC-3' and 5'-CATGTAGGCCA TGAGGTCCACCAC-3'. Conditions of PCR were as follows: 94°C for 30 s, 61°C for 15 s, and 72°C for 40–60 s for 35 cycles. The PCR products were then separated on 1.5% agarose gels, stained with ethidium bromide, and visualized with the gel documentation imager Epi Chemi II (UVP Inc., Upland, CA, USA). Densitometry of bands were analyzed using Labworks™ software (UVP). Relative expression of XRRAl was calculated as percentages of the mean raw densities of grayscale level of XRRAl to *G3PDH*.

X-radiation of HCT116^{Clone2_XRR}, HCT116^{Clone10}, and HCT116^{CloneK_XRS} cells

Clones of HCT116 cells were cultured at 1×10^5 cells/ml. Cultures reached 70–80% confluence before being treated with XR. Each clone was treated with a single dose of 4 or 10 Gy using a 250 kVp X-ray unit (Pantak, CT, USA) at a dose rate of 150 cGy/min. Total RNAs were collected 5 minutes, 6 hours and 24 hours following the XR. Specific primers for Hs *XRR1* as mentioned above were used. *G3PDH* was used as control. Relative expression of *XRR1* to *G3PDH* was evaluated

cDNA microarray of Mf *XRR1* from testis versus mixed tissues or human testis

512 fully sequenced testis cDNA clones were amplified using 5'-CTTCTGCTCTAAAAGCTGCG-3' as a forward primer and 5'-CGACCTGCAGCTCGAGCAC-3' as a reverse primer. Successful amplification was confirmed by agarose gel electrophoresis. Approximately 300 µg /ml DNA in 2 × Solution-T reagent (Takara Bio Inc., Shiga, Japan) were printed on duplicate glass-slides with a GMS 417 arrayer (Genetic MicroSystems, Woburn, MA, USA). RNA was isolated with TRIZOL Reagent (Invitrogen K.K., Tokyo, Japan) and purified with Oligo-Tex (Takara Bio Inc.). Macaque testis RNA was labeled with Cy3-dUTP (Pharmacia K.K., Tokyo, Japan). A mixture of macaque RNA was also obtained from 10 tissues: brain, heart, skin, liver, spleen, renal, pancreas, stomach, small intestine, large intestine, and labeled with Cy5-dUTP (Pharmacia). We mixed equal amount of RNA of these ten tissues. In a separate experiment, RNA from human testis (BD Biosciences) was labeled with Cy5-dUTP. Both labeled RNAs were co-hybridized to DNA spots. After the hybridization and washing procedure, slides were scanned with ScanArray (PerkinElmer Life Sciences Co., Tokyo, Japan). Beta actin and/or total signal intensity was used as the control for hybridization. The methods and results of DNA microarray have been deposited in the Gene Expression Omnibus <http://www.ncbi.nlm.nih.gov/geo> with the accession numbers GPL206, GSM2387, and GSM2388.

ESTs-based ORF assembling (EBOA) and other in silico analysis

In order to elucidate what gene R40588 might represent, we employed EBOA to obtain the full-length cDNA containing start-, stop-codon, and poly-A signal or a complete open reading frame (ORF). The sequence of R40588 was used as a template to do BLAST search for all possible overlapping ESTs from human dbEST <http://www.ncbi.nlm.nih.gov/dbEST>. These retrieved ESTs, either sense-antisense or 5'- and 3'-direction, were selected and were again used as template for searching other overlapping ESTs. To confirm the ORF candidates, (i) we carried out a BLAST search against full-length cDNAs that were available on public databases, and (ii)

genomic sequences comprising the ORF candidates were analyzed with GraileXP version 3.3 <http://comp.bio.ornl.gov/grailexp> [11]. Multiple alignments were done according to ClustalW method [24]. Transcription factors and their binding sites were predicted by employing the Alibaba2 version 2.1 program <http://www.gene-regulation.com/pub/programs.html> that used the TRANSFAC database <http://transfac.gbf.de/TRANSFAC> [25]. Possible tissues/organs expression of *XRR1* was explored from the SAGEmap <http://www.ncbi.nlm.nih.gov/SAGE> [26]. Protein motifs were searched using software available on these web sites: <http://www.expasy.ch/prosite> [27], <http://www.at.emblnet.org/emblnet/tools/bio/PESTfind> [28], and <http://www.cbs.dtu.dk/services/NetPhos> [29].

Data deposition

The sequences reported in this paper have been deposited in the DDBJ/EMBL/GenBank databases under the accession numbers BK000541, AY163836, AB072776, BK000542, and BK000644, respectively. HUGO Gene Nomenclature Committee and MGD Nomenclature Committee have approved the names and symbols of the *XRR1* and *Xrr1* genes.

List of abbreviations

Bt, *Bos taurus* (bovine); EBOA, ESTs-based ORF assembling; EST, expressed sequence tag; Hs, *Homo sapiens* (human), Gy, Gray; *Macaca fascicularis* (macaque); Mm, *Mus musculus* (mouse); ORF, open reading frame; Rn, *Rattus norvegicus* (rat); SAGE, serial analysis gene expression; Sc, *Sus scrofa* (pig); *XRR1*, X-ray radiation resistance associated 1, XR, X-radiation.

Authors' contributions

FMM carried out the *in silico* analysis including the multiple sequence alignments, cloning of the splice variant, XR assay, cells cultures, RT-PCR of XR treated, various human/mouse cancer and normal cells/tissues/organs, construction and expression of the fusion protein, immunocytochemistry study, and drafted the manuscript. NO carried out the construction and sequencing of macaque testis and brain cDNA libraries, and cloning and cDNA microarray of Mf *XRR1*. KH was funded to carry out the construction of cDNA libraries and cDNA microarray of macaque brain and testis, conceived of the Mf *XRR1* study and the *in silico* analysis. QYL contributed technical expertise to the cDNA microarray analysis of HCT116 clones. CEN is the Principal Investigator and was funded to carry out the cDNA microarray of HCT116 clones, supervised this work, provided the technical radiobiological expertise and contributed to the writing of this manuscript. All authors read and approved the final manuscript.

Acknowledgments

We thank Dr. A. Lagarde for assistance with the DNA sequencing. This work was supported in part by grants from the National Cancer Institute of Canada with funds from the Canadian Cancer Society (to CEN) and from the Ministry of Health, Labor, and Welfare of Japan (to KH).

References

- Zhivotovsky B, Joseph B and Orrenius S: **Tumor radiosensitivity and apoptosis.** *Exp Cell Res* 1999, **248**:10-17.
- Khanna KK and Jackson SP: **DNA double-strand breaks: signaling, repair and the cancer connection.** *Nat Genet* 2001, **27**:247-254.
- Pandita TK: **ATM function and telomere stability.** *Oncogene* 2002, **21**:611-618.
- Abraham RT: **Cell cycle checkpoint signaling through the ATM and ATR kinases.** *Genes Dev* 2001, **15**:2177-2196.
- Jeggo PA: **DNA breakage and repair.** *Adv Genet* 1998, **38**:185-218.
- Wood RD, Mitchell M, Sgouros J and Lindahl T: **Human DNA repair genes.** *Science* 2001, **291**:1284-1289.
- Marcou Y, D'Andrea A, Jeggo PA and Plowman PN: **Normal cellular radiosensitivity in an adult Fanconi anaemia patient with marked clinical radiosensitivity.** *Radiother Oncol* 2001, **60**:75-79.
- Mirzayans R, Aubin RA, Bosnich W, Blattner WA and Paterson MC: **Abnormal pattern of post-gamma-ray DNA replication in radioresistant fibroblast strains from affected members of a cancer-prone family with Li-Fraumeni syndrome.** *Br J Cancer* 1995, **71**:1221-1230.
- Bennett CB, Lewis LK, Karthikeyan G, Lobachev KS, Jin YH, Sterling JF, Snipe JR and Resnick MA: **Genes required for ionizing radiation resistance in yeast.** *Nat Genet* 2001, **29**:426-434.
- Altschul SF, Gish W, Miller W, Myers EW and Lipman DJ: **Basic local alignment search tool.** *J Mol Biol* 1990, **215**:403-410.
- Xu Y and Uberbacher EC: **Automated gene identification in large-scale genomic sequences.** *J Comput Biol* 1997, **4**:325-338.
- Kozak M: **An analysis of 5'-noncoding sequences from 699 vertebrate messenger RNAs.** *Nucleic Acids Res* 1987, **15**:8125-8148.
- Florea L, Hartzell G, Zhang Z, Rubin GM and Miller W: **A computer program for aligning a cDNA sequence with a genomic DNA sequence.** *Genome Res* 1998, **8**:967-974.
- Li G, Nelsen C and Hendrickson EA: **Ku86 is essential in human somatic cells.** *Proc Natl Acad Sci USA* 2002, **99**:832-837.
- Friedman AD: **Runx1, c-Myb, and C/EBPalpha couple differentiation to proliferation or growth arrest during hematopoiesis.** *J Cell Biochem* 2002, **86**:624-629.
- Wang H, Goode T, Iakova P, Albrecht JH and Timchenko NA: **C/EBPalpha triggers proteasome-dependent degradation of cdk4 during growth arrest.** *EMBO J* 2002, **21**:930-941.
- Xie Y, Chen C, Stevenson MA, Auron PE and Calderwood SK: **Heat shock factor 1 represses transcription of the IL-1beta gene through physical interaction with the nuclear factor of interleukin 6.** *J Biol Chem* 2002, **277**:11802-11810.
- Chinenov Y and Kerppola TK: **Close encounters of many kinds: Fos-Jun interactions that mediate transcription regulatory specificity.** *Oncogene* 2001, **20**:2438-2452.
- Sanyal S, Sandstrom DJ, Hoeffler CA and Ramaswami M: **AP-1 functions upstream of CREB to control synaptic plasticity in Drosophila.** *Nature* 2002, **416**:870-874.
- Servillo G, Della Fazio MA and Sassone-Corsi P: **Coupling cAMP signaling to transcription in the liver: pivotal role of CREB and CREM.** *Exp Cell Res* 2002, **275**:143-154.
- de Rooij DG, van de Kant HJ, Doi R, Wagemaker G, van Buul PP, van Duijn-Goedhart A, de Jong FH and Broerse JJ: **Long-term effects of irradiation before adulthood on reproductive function in the male rhesus monkey.** *Biol Reprod* 2002, **66**:486-494.
- Osada N, Hida M, Kusuda J, Tanuma R, Iseki K, Hirata M, Suto Y, Hirai M, Terao K, Suzuki Y, Sugano S, Hashimoto K and Kusuda J: **Assignment of 118 novel cDNAs of cynomolgus monkey brain to human chromosomes.** *Gene* 2001, **275**:31-37.
- Osada N, Hida M, Kusuda J, Tanuma R, Hirata M, Hirai M, Terao K, Suzuki Y, Sugano S and Hashimoto K: **Prediction of unidentified human genes on the basis of sequence similarity to novel cDNAs from cynomolgus monkey brain.** *Genome Biol* 2002, **3**:1-006.
- Thompson JD, Higgins DG and Gibson TJ: **CLUSTAL W: improving the sensitivity of progressive multiple sequence alignment through sequence weighting, position-specific gap penalties and weight matrix choice.** *Nucleic Acids Res* 1994, **22**:4673-4680.
- Wingender E, Chen X, Fricke E, Geffers R, Hehl R, Liebich I, Krull M, Matys V, Michael H, Ohnhauser R, Pruss M, Schacherer F, Thiele S and Urbach S: **The TRANSFAC system on gene expression regulation.** *Nucleic Acids Res* 2001, **29**:281-283.
- Lash AE, Tolstoshev CM, Wagner L, Schuler GD, Strausberg RL, Riggin GJ and Altschul SF: **SAGEmap: a public gene expression resource.** *Genome Res* 2000, **10**:1051-1060.
- Falquet L, Pagni M, Bucher P, Hulo N, Sigrist CJ, Hofmann K and Bairoch A: **The PROSITE database, its status in 2002.** *Nucleic Acids Res* 2002, **30**:235-238.
- Rechsteiner M and Rogers SW: **PEST sequences and regulation by proteolysis.** *Trends Biochem Sci* 1996, **21**:267-271.
- Blom N, Gammeltoft S and Brunak S: **Sequence and structure-based prediction of eukaryotic protein phosphorylation sites.** *J Mol Biol* 1999, **294**:1351-1362.

Publish with **BioMed Central** and every scientist can read your work free of charge

"BioMed Central will be the most significant development for disseminating the results of biomedical research in our lifetime."

Sir Paul Nurse, Cancer Research UK

Your research papers will be:

- available free of charge to the entire biomedical community
- peer reviewed and published immediately upon acceptance
- cited in PubMed and archived on PubMed Central
- yours — you keep the copyright

Submit your manuscript here:
http://www.biomedcentral.com/info/publishing_adv.asp

