

## MAX4 and RMS1 are orthologous dioxygenase-like genes that regulate shoot branching in *Arabidopsis* and pea

Karim Sorefan,<sup>1,4</sup> Jon Booker,<sup>1</sup> Karine Haurogné,<sup>2</sup> Magali Goussot,<sup>2</sup> Katherine Bainbridge,<sup>1</sup> Eloise Foo,<sup>3</sup> Steven Chatfield,<sup>1,5</sup> Sally Ward,<sup>1</sup> Christine Beveridge,<sup>3</sup> Catherine Rameau,<sup>2</sup> and Ottoline Leyser<sup>1,6</sup>

<sup>1</sup>Department of Biology, University of York, York, YO10 5YW, United Kingdom; <sup>2</sup>Station de Génétique et d'Amélioration des Plantes, INRA, Route de Saint-Cyr, F-78026 Versailles Cedex, France; <sup>3</sup>School of Life Sciences, The University of Queensland, Brisbane, Queensland 4072, Australia

**Shoot branching is inhibited by auxin transported down the stem from the shoot apex. Auxin does not accumulate in inhibited buds and so must act indirectly. We show that mutations in the MAX4 gene of *Arabidopsis* result in increased and auxin-resistant bud growth. Increased branching in *max4* shoots is restored to wild type by grafting to wild-type rootstocks, suggesting that MAX4 is required to produce a mobile branch-inhibiting signal, acting downstream of auxin. A similar role has been proposed for the pea gene, RMS1. Accordingly, MAX4 and RMS1 were found to encode orthologous, auxin-inducible members of the polyene dioxygenase family.**

Supplemental material is available at <http://www.genesdev.org>.

Received December 6, 2002; revised version accepted March 20, 2003.

Variation in shoot branching is an important cause of diversity in plant form. Individual species have a characteristic branching pattern, which can change through the life cycle in response to developmental cues and to environmental conditions (Cline 1991; Beveridge et al. 2003). Branching control therefore requires the integration of many signals, both known and unknown.

Shoot branches arise from axillary meristems that form in the axils of leaves on the primary shoot axis. The axillary meristems themselves initiate leaves to form a bud. Bud growth can arrest but has the potential to re-activate to produce a shoot branch. Removal of the pri-

mary shoot apex results in activation of arrested axillary buds. The ability of the shoot apex to repress axillary bud growth is termed apical dominance. Thimann and Skoog (1933) reported that a compound, derived from the shoot apex, and later identified as auxin (indole-3-acetic acid), could inhibit the growth of lateral buds when applied to the stump of a decapitated plant. Subsequent work has provided multiple lines of evidence in support of auxin-mediated bud inhibition in planta. However, a second messenger must relay the auxin signal into the bud because apically derived auxin is not transported into buds (Morris 1977) and exogenous auxin applied directly to buds does not inhibit their growth (Cline 1996).

One model proposes that the effect of auxin on bud growth is mediated by cytokinin. Cytokinin can directly promote bud growth (Cline 1991); transgenic plants with increased auxin levels have reduced cytokinin levels (Eklöf et al. 2000), and cytokinin export from roots increases after decapitation, with this increase being abolished by application of auxin to the decapitated stump (Bangerth 1994). However, there is also good evidence for novel regulators of bud growth downstream of auxin. The *ramosus* mutants (*rms1* to *rms5*) of pea (for reviews, see Beveridge 2000; Beveridge et al. 2003) have increased lateral branching, but this phenotype can be almost completely rescued by grafting a wild-type (WT) rootstock to an *rms1*, *rms2*, or *rms5* mutant scion. Such grafting studies show that *RMS1* and *RMS5* are required for the production of a graft transmissible signal that moves from root to shoot and inhibits branching (Foo et al. 2001; Morris et al. 2001). This mobile signal is unlikely to be auxin or cytokinin because, as well as increased branching, the *rms1* and *rms5* mutants have reduced root-derived cytokinin and have at least WT auxin levels and transport (Beveridge et al. 1997; Morris et al. 2001). This is exactly the opposite of the prediction for a bushy plant and may be the result of feedback regulation of auxin and cytokinin levels. It is possible that the *RMS1/RMS5*-dependent long distance signal is a second messenger for auxin. The lateral buds of *rms1* shoots can only respond to the inhibitory effects of apical auxin when grafted to WT rootstocks (Beveridge et al. 2000).

To identify genes that regulate bud growth in *Arabidopsis*, we screened mutagenized populations for plants with increased branching and have identified four loci, mutations at which result in more axillary growth, named *max1* to *max4* (Stirnberg et al. 2002). In this paper, we describe the phenotype of the *max4* mutant and the cloning of the *MAX4* gene, and show that this gene is orthologous to *RMS1*.

### Results and Discussion

#### *Isolation and genetic characterization of the max4 mutants*

We have identified a class of *Arabidopsis* mutants with more axillary branches and placed them in four complementation groups named *max1* to *max4* (Stirnberg et al. 2002). Four independent recessive alleles were found at the *MAX4* locus in the Columbia (Col) ecotype. Two alleles (*max4-1* and *max4-2*) were isolated from the Sainsbury Laboratory *Arabidopsis* Transposant (SLAT) collection (Tissier et al. 1999), and two alleles (*max4-3*

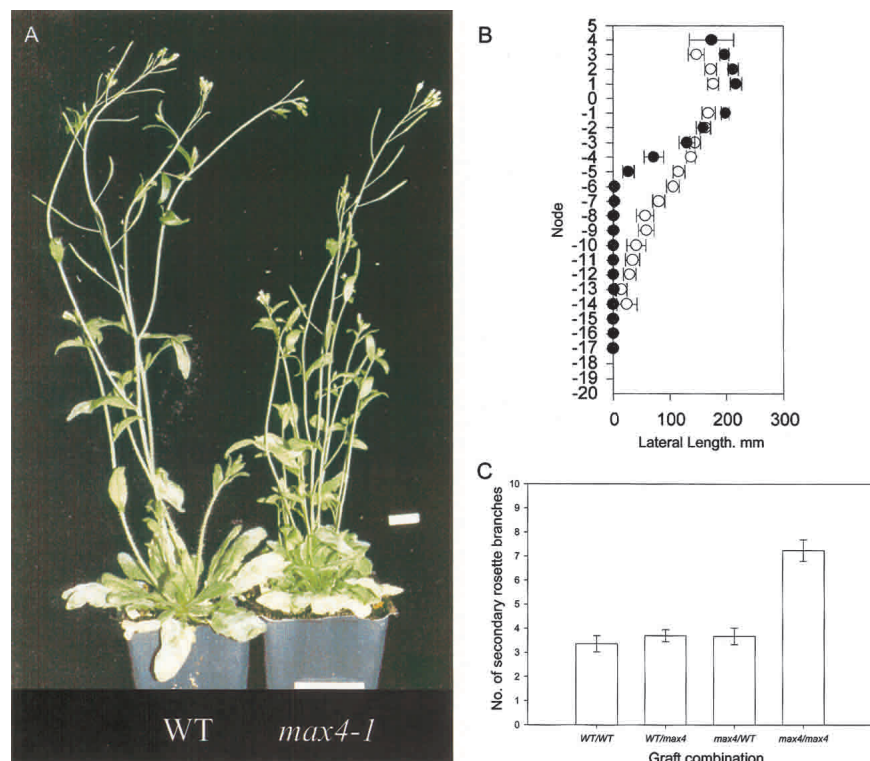
[Keywords: Auxin; *Arabidopsis*; CCD; pea; shoot branching]

Present addresses: <sup>4</sup>Department of Cell and Developmental Biology, John Innes Centre, Norwich NR4 7UH, UK; <sup>5</sup>Department of Botany, University of Toronto, Toronto M5S 1A1, Canada.

<sup>6</sup>Corresponding author.

E-MAIL [hmol1@york.ac.uk](mailto:hmol1@york.ac.uk); FAX 44-1904-328682.

Article and publication are at <http://www.genesdev.org/cgi/doi/10.1101/gad.256603>.



**Figure 1.** Shoot phenotype of *max4-1* mutant plants. (A) Wild-type (WT) and *max4-1* plants were grown under a 16-h long-day photoperiod for 3 wk. Bar, 1 cm. (B) Lateral bud and inflorescence lengths of WT (closed circles) and *max4-1* (open circles). Lateral lengths were measured when the primary shoot apex had ceased activity. Cauline nodes are numbered positively (5 youngest, 1 oldest) and rosette nodes are numbered negatively (-1 youngest, -20 oldest). Node number is aligned so that node 1 is the oldest cauline node. Error bars represent the standard errors of the mean;  $n = 10$ . (C) Mean branch numbers originating from the rosette of plants at maturity produced by hypocotyl grafting between WT and *max4-1* plants (shoot genotype/root genotype). Error bars represent the standard errors of the mean;  $n = 4-11$ .

and *max4-4*) were isolated from the AMAZE population (Wisman et al. 1998). There were no apparent differences in the severity of phenotype conferred by these alleles, and the *max4-1* allele was chosen for detailed phenotypic analysis, following two rounds of back-crossing to WT.

#### The *max4-1* mutant has increased shoot branching

Mature *max4-1* mutant plants grown under a 16-h photoperiod have a bushy appearance at maturity as a result of increased growth of the buds in rosette leaf axils (Fig. 1A). In WT plants, all the cauline nodes and the most apical rosette nodes produced buds that developed into lateral inflorescences and, on average, the uppermost  $5.1 \pm 0.2$  rosette nodes produced an elongated inflorescence  $>4$  mm in length (Fig. 1B). A basipetal gradient of inflorescence lengths was observed, with branches arising in the youngest leaf axils having the greatest mean branch lengths. This gradient continued into older rosette nodes, where buds remained smaller than 4 mm in length. In most plants ( $n = 7/10$ ) a weak acropetal gradient of bud growth was also observed, although these buds remained very small throughout the life of the plant. Between the acropetal and basipetal gradients were one to three nodes that carried tiny buds, or no bud visible to the naked eye (data not shown).

As in WT, all the cauline nodes of mature *max4-1* plants produced buds that developed into elongating inflorescences with the same basipetal gradient (Fig. 1A). However, a greater number of rosette buds developed into inflorescences compared with WT, on average  $8.5 \pm 0.4$  (Fig. 1B). An acropetal gradient of bud growth was also observed in most of the *max4-1* plants ( $n = 8/10$ ), but in contrast to WT, these buds grew out to form short inflorescences. Therefore, both the basipetal and acropetal patterns of bud activity are similar to WT in long-day-grown *max4-1* mutants, but the mutant buds are more likely to grow out.

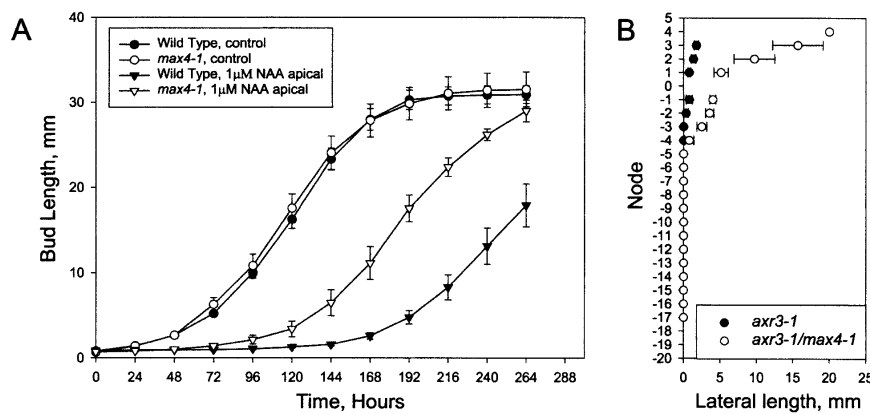
We found no evidence that, unlike the *supershoot* mutant (Reintanz et al. 2001; Tantikanjana et al. 2001), but similar to the *Arabidopsis max1* and *max2* mutants (Stirnberg et al. 2001) and the *axr1* auxin-resistant mutant (Stirnberg et al. 1999), the *max4* mutations affect the number of axillary meristems formed at each node. Rather, the defect appears to be specifically in bud outgrowth. Furthermore, like *max1*, *max2*, and *axr1*, *max4* affects both the acropetal and basipetal gradients in a similar way.

#### MAX4 expression in the roots is sufficient for WT shoot branching

To determine the site of action of MAX4, we performed reciprocal hypocotyl grafting experiments (Turnbull et al. 2002). The self-grafted control plants reproduced branching phenotypes similar to intact controls, indicating that the grafting process does not affect branching (data not shown). Graft combinations with either a WT scion or a WT rootstock showed WT shoot branching patterns (Fig. 1C), indicating that, although the MAX4 gene can act in the shoot to inhibit branching, expression in the root is sufficient for WT shoot branching levels. These data suggest that the MAX4 gene is required for the production of a graft-transmissible inhibitor of shoot branching.

#### Auxin responses in the *max4-1* mutant

We assayed the response of *max4-1* axillary buds to auxin using a split plate assay (Chatfield et al. 2000). Bud outgrowth from excised cauline nodes placed between divided agar sections in a Petri dish is inhibited by apically applied auxin. In this system, without hormone treatment, buds of WT and *max4-1* grew out with similar kinetics, with elongation commencing 2 d after node excision (Fig. 2A). Apical auxin inhibited WT bud outgrowth for an average of 6 d, whereas *max4-1* mutant buds were partially resistant to apical auxin, being inhibited for an average of only 4 d.



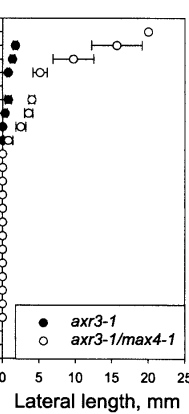
**Figure 2.** Altered auxin responses in *max4-1* mutants. (A) Lateral inflorescence outgrowth of excised *max4-1* and WT nodes in response to the synthetic auxin 1-NAA. The oldest cauline node was excised from WT (closed symbols) or *max4-1* (open symbols), and inserted between two agar blocks. The apical agar block contained either no 1-NAA (circles) or 1  $\mu$ M 1-NAA (triangles). Bud outgrowth was measured every 24 h. Error bars represent standard error of the mean;  $n = 11$  to 19. (B) Lateral bud and inflorescence lengths of *axr3-1* (closed circles) and *axr3-1, max4-1* double-mutant plants (open circles). Lateral lengths were measured 55 d after sowing, and the mean primary inflorescence height of the *axr3-1* and the *axr3-1, max4-1* double-mutant plants were not significantly different. Cauline nodes are numbered positively and rosette nodes are numbered negatively. Node number increases with proximity to the shoot apex. Node number is aligned so that node 1 is the oldest cauline node. Error bars represent standard error of the mean;  $n = 7$ .

To test further the role of auxin in the *max4-1* phenotype, we constructed double mutants between *max4-1* and *axr3-1*. The *axr3-1* mutation is a semidominant gain of function mutation resulting in an overresponse to auxin and reduced shoot branching (Cline et al. 2001). The *axr3-1, max4-1* double mutant was found to have increased lateral branch lengths in comparison with those of *axr3-1* mutant plants (Fig. 2B). This suggests that some of the dominant branch suppressing effects of *axr3-1* require *MAX4*, consistent with the idea that the graft-transmissible *MAX4*-dependent signal acts downstream of auxin to inhibit branching. In further support of this model, when double mutants were constructed between the loss-of-function auxin-resistant *axr1-12* mutant and *max4-1*, branching levels were no higher than those of the single mutants (data not shown).

*MAX4* is not generally required for auxin response because, other than in shoot branching assays, the *max4-1* mutation had little or no effect on responses to exogenous auxin or *axr3-1* phenotypes (data not shown).

#### Molecular characterization of the *MAX4* gene

The *max4-1* and *max4-2* lines were found to contain single transposon insertions that cosegregated with the mutant phenotypes (data not shown). DNA flanking the transposon in *max4-1* and *max4-2* was isolated by inverse PCR and both amplified fragments were found to be identical in sequence to parts of the same predicted gene (At4g32810; Fig. 3). When At4g32810 was sequenced from the *max4-3* and *max4-4* alleles, it was found to contain a four-base insertion and a two-base deletion, respectively (Fig. 3). These changes are predicted to result in premature termination of the encoded protein and are consistent with transposon excision footprints (Cardon et al. 1993). The fact that four independent *max4* alleles have mutations in this one gene provides strong evidence that this is the *MAX4* gene.



We isolated the *MAX4* cDNA by reverse transcription PCR (RT-PCR) of purified polyadenylated mRNA extracted from WT shoot tissue. The resulting cDNA contains a single open reading frame predicted to encode a protein of 570 amino acids (Fig. 3). The cDNA is identical to the coding region of an expressed sequence tag (EST) in the database.

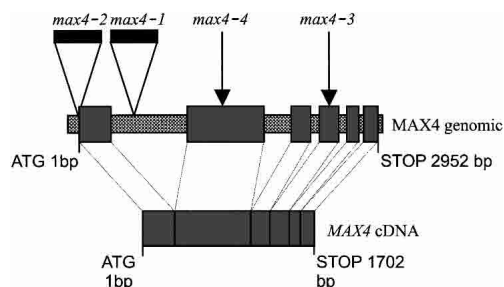
The cDNA was introduced into *max4-1* mutant plants under the control of the cauliflower mosaic virus 35S promoter. Seventeen independent T1 plants from these transformations had a WT phenotype, which was stably inherited in the T2 generation (data not shown), confirming that *MAX4* is At4g32810. Interestingly, overexpression of *MAX4* from the 35S promoter in WT plants had no obvious phenotypic effect (data not shown). This suggests that either *MAX4* is not the rate-limiting step in the synthesis of the graft-transmissible substance, or the levels of the substance are regulated posttranscriptionally, or the substance cannot inhibit branching below WT levels.

tionally, or the substance cannot inhibit branching below WT levels.

#### *MAX4* belongs to the polyene chain dioxygenase family

Database searches using the predicted protein sequence of *MAX4* (Altschul et al. 1990) show that it is a member of the polyene chain dioxygenase superfamily, and is likely to be localized to plastids (Emanuelsson et al. 2000). A phylogenetic analysis of family members from plants, animals, and bacteria is shown in Figure 4A (constructed using ClustalX 1.8 program; Thompson et al. 1997). *MAX4*, RMS1 (see below), and a rice sequence (*OsMAX4*) form a well-supported clade. The abscisic acid (ABA) biosynthetic protein, VP14, falls within another strongly supported clade that includes *Arabidopsis* carotenoid cleaving dioxygenases (CCDs, also called NCEDs) probably involved in ABA biosynthesis (AtCCD2, AtCCD3, AtCCD5, AtCCD6, and AtCCD9; for review, see Seo and Koshiba 2002). The representatives of the animal RPE65, BETA DIOX1 and BETA DIOX2 proteins, form a third well-supported clade; and a fourth discrete group of proteins with similarity to bacterial lignostibene dioxygenases is represented here by two *Sphingomonas paucimobilis* proteins. The AtCCD1 protein, which is not involved in ABA biosynthesis but cleaves beta carotene (Schwartz et al. 2001), and AtCCD7 and AtMAX4 are grouped on long branches.

These results suggest the attractive hypothesis that *MAX4* encodes a carotenoid-cleaving dioxygenase involved in the synthesis of a mobile branch-inhibiting substance. This substance is very unlikely to be ABA because of the lack of ABA-related phenotypes in *max4* mutants (data not shown) and the lack of requirement for ABA in auxin-mediated inhibition of bud outgrowth (Chatfield et al. 2000). Taken together, these data support the hypothesis that *MAX4* is involved in the syn-



**Figure 3.** Diagram of *MAX4* genomic and *MAX4* cDNA showing the relative positions of the transposon-induced mutations. The *MAX4* cDNA consists of six exons (larger gray bars) separated by five introns in the genomic DNA (smaller hatched bars). The *max4-1* and *max4-2* mutations are caused by transposon insertions (black bars) and the *max4-3* and *max4-4* mutations (arrows) are caused by transposon footprints.

thesis of a novel hormone that acts downstream of auxin to inhibit shoot branching.

#### The *MAX4* gene is orthologous to the *RMS1* gene of *pea*

The similar phenotypes conferred by *max4* and the pea *rms* mutants prompted us to test whether any of the *RMS* genes were orthologous to *MAX4*. We isolated the pea ortholog of *MAX4* using degenerate primers based on amino acid alignment between *MAX4* and the deduced amino acid sequences from two *Medicago truncatula* ESTs showing high homology with *MAX4* [60% (77/127) and 62% (60/96) identity]. A pea gene was isolated encoding a 561 amino acid protein showing 68% identity with *MAX4* across the 518 amino acids at the C terminus. Comparison of the RT-PCR-amplified cDNA and the corresponding genomic DNA revealed five introns for *PsMAX4* at the same position as in the *Arabidopsis* gene and of comparable sizes (740/918; 263/122; 88/110; 78/91; 70/89).

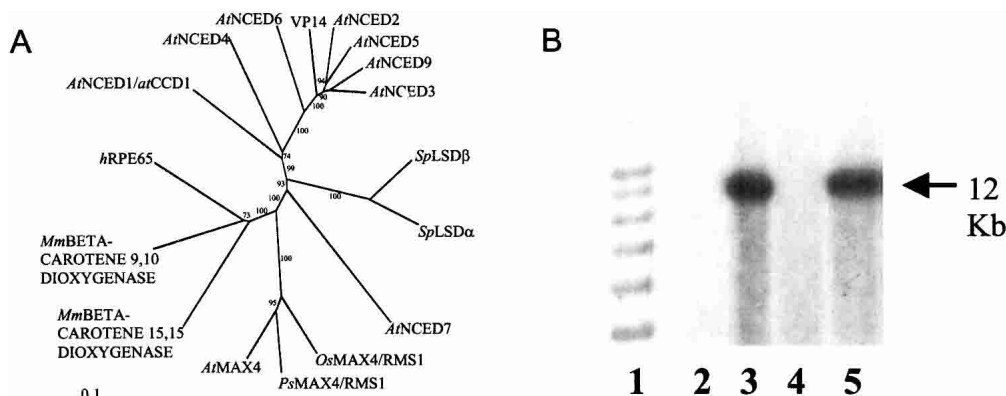
We mapped the *PsMAX4* sequence using a recombinant inbred line mapping population (Laucou et al.

1998). *PsMAX4* was found to map to the top of linkage group III at same position as *RMS1* (Blixt 1976). In an F2 population of 95 individuals (M3T-884 × Torsdag) segregating for *rms1*, complete cosegregation was observed between *PsMAX4* and *RMS1*. Southern analysis using *PsMAX4* as a probe revealed a 12-kb band present for WT progenitors Weitor and Raman and absent for mutant alleles *rms1-2* and *rms1-3* (Fig. 4B). The map position of *PsMAX4*, its deletion in two independent *rms1* alleles, and the similar phenotypes of *max4* and *rms1* mutants provide strong evidence that *RMS1* and *MAX4* are true orthologs.

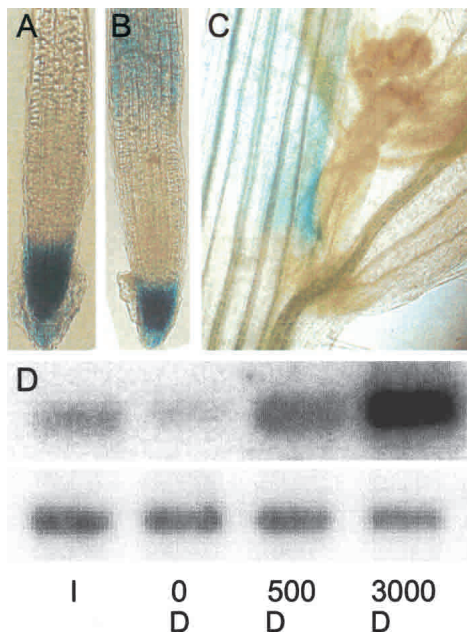
#### Expression of the *MAX4* and *RMS1* genes

Transcripts for *MAX4* and *RMS1* are present at very low levels and are not readily detectable on Northern blots. However, they can be amplified by PCR from all tissues tested (data not shown). These widely distributed but very low expression levels for *MAX4* transcripts are supported by Affymetrix gene chip data, publicly available from the Nottingham Arabidopsis Stock Centre. To determine more precisely the location of *MAX4* transcription, we constructed promoter-GUS fusions using 2.7 kb of DNA upstream of the *MAX4* translational start site. This construct was introduced into WT Col plants, and GUS expression was analyzed using the chromogenic substrate X-Gluc. Strong expression was consistently observed in root tips (Fig. 5A). Other tissues such as hypocotyls and petioles occasionally showed very weak expression in some plants from each line (data not shown). Similarly, weak expression was variably observed in nodal sections associated with young axillary buds (Fig. 5C). No GUS staining was observed in the buds themselves, consistent with the remote site of action of *MAX4* predicted by the grafting studies.

Because *MAX4* and *RMS1* are predicted to act downstream of auxin, we tested whether the transcription of either gene is affected by auxin. We used RT-PCR to investigate the expression of the *RMS1* gene in pea using the classical apical dominance test involving decapitation and replacement of the apex by exogenous auxin (Fig. 5D). Decapitation caused a substantial drop



**Figure 4.** (A) Phylogenetic analysis of polyene chain dioxygenases. The unrooted phylogenetic tree was generated from multiple sequence alignments, using ClustalX and modified by eye. Positions with gaps were excluded. Numbers at branch forks represent bootstrap values as a percentage of 10,000 bootstraps, and give a confidence limit for grouping together the sequences. Proteins are labeled with a prefix that represents the species origin of the sequence: *At*, *Arabidopsis thaliana*; *Ps*, *Pisum sativum*, pea; *Os*, *Oryza sativa*, rice; *Sp*, *Sphingomonas paucimobilis*; *h*, human; *Mm*, *Mus musculus*, mouse. (B) Southern blot analysis of the *PsMAX4* gene in WT and isogenic *rms1* pea lines. Lanes 2–5 contain *EcoRI*-digested genomic DNA from *rms1-2*, Weitor, *rms1-3*, and Raman, respectively. Lane 1 contains a 1-kb ladder.



**Figure 5.** Root tip expression of the GUS reporter protein driven by 2.7 kb of DNA upstream of the *MAX4* gene. (A) Untreated 5-day-old seedlings. (B) Seedlings transferred to 1 μM 1-NAA for 24 h. (C) Nodal section showing expression close to a young bud, but not in the bud. (D, top panel) *RMS1* gene expression in internode 4 of 14-day-old plants, with 5 leaves expanded, that were intact (I) or 6 h after decapitation (D), treated with 0, 500, or 3000 mg/L<sup>-1</sup> IAA to the decapitated stump. (Bottom panel) Actin gene expression was monitored as a control.

in *RMS1* expression within 6 h after treatment. This reduction was not only prevented by replacement of the apex with 500 and 3000 mg/L exogenous IAA, but *RMS1* expression was up-regulated compared with intact controls. In contrast, similar experiments in *Arabidopsis* using both RT-PCR and the promoter::GUS reporter lines failed to detect any up-regulation of *MAX4* transcript levels in stem sections in response to apical auxin (data not shown). However, 24 h after transfer of promoter::GUS seedlings to auxin-containing media (1 μM NAA), up-regulation of GUS expression was observed in regions of the root distal to the apparently constitutive root tip expression pattern (Fig. 5B). No such up-regulation was detected following 6 h exposure (data not shown).

These data suggest that auxin may regulate shoot branching partly through transcriptional up-regulation of *RMS1/MAX4*. In pea, this up-regulation occurs at the node and may be sufficiently rapid to inhibit bud growth in response to apical auxin. In *Arabidopsis*, however, no up-regulation was detected at the node, despite the fact that this is a major site for *AXR1* and auxin action in the regulation of bud growth (Booker et al. 2003). This, combined with the observation that *MAX4* action in the root is sufficient for WT branching, suggests an additional role for auxin downstream of the synthesis of the *RMS1/MAX4*-dependent signal. For example, auxin may regulate the transport of the *RMS1/MAX4*-dependent signal into axillary buds. A full test for this hypothesis awaits the identification of the novel *MAX4/RMS1* dependent, branch-inhibiting signal.

## Materials and methods

### Plant growth conditions

*Arabidopsis* plants were grown in 4-cm square compartments (P40, Cookson Plantpak) containing F2 compost treated with Intercept 70WG (both Levington Horticulture) in a growth room with 16 h light (white light at 70 μmole/m<sup>2</sup>s<sup>-1</sup>). Pea seedlings were grown under glasshouse conditions extended to 18 h light (incandescent light providing ~3 μmole/m<sup>2</sup> s<sup>-1</sup> at pot top), as described by Morris et al. (2001).

### Phylogenetic analysis

Sequences for phylogenetic analysis were retrieved from the NCBI database (see Supplemental Material). Sequences were aligned with ClustalX software (Thompson et al. 1997). The alignment was analyzed by eye, and regions with a low confidence of alignment were removed using Bioedit software (Hall 1999). The phylogenetic tree was generated using Neighbour Joining and a distance matrix with correction for multiple substitutions. Bootstrapping values were generated with  $n = 10,000$ . TreeView (<http://taxonomy.zoology.gla.ac.uk/rod/treeview.html>) was used to visualize the tree.

### Gene cloning

The *MAX4* gene was isolated using inverse PCR (iPCR) of *max4-1* and *max4-2* DNA (see Supplemental Material for details). The CaMV35S::*MAX4* cDNA construct was made using standard techniques (Sambrook et al. 1989; Supplemental Material). The *MAX4* promoter-GUS fusion construct was generated by PCR amplification of a 2.7-kb region upstream of the ATG including *Bam*HI and *Xba*I restriction sites in the primers. These sites were used to clone the fragment into the pBI101.1 vector. This plasmid was transformed into *Agrobacterium* and then into plants using the floral dip method of Clough and Bent (1998). Two typical lines containing a single site of transgene insertion were taken to homozygosity and used for detailed analysis.

### Isolation of the pea *MAX4* homolog PsMAX4

Degenerate primers were designed in consensus regions between the *Arabidopsis* *MAX4* protein and the deduced amino acid sequence of two *Medicago truncatula* genes showing high homology with *MAX4* (see Supplemental Material). These primers were used to amplify *PsMAX4* from both cDNA and genomic DNA. The amplification products were used to determine the sequence of the pea cDNA and the positions of introns in the gene (Brunel et al. 1999).

### Mapping of PsMAX4

For mapping the *PsMAX4* sequence, a cleaved amplified polymorphic sequence (CAPS) marker was designed to detect a *Dra*I restriction site polymorphism between the two parents of our mapping population of 139 recombinant inbred lines (Laucou et al. 1998); Tèrese and line K586 (isogenic to Torsdag; see Supplemental Material). This CAPS marker was also used for cosegregation analysis between *PsMAX4* and the pea branching gene *RMS1* in a population of 95 F2 individuals from a cross between the *rms1-10* mutant line M3T-884, obtained from Tèrese by EMS mutagenesis (Rameau et al. 1997; Symons and Murfet 1997), and Torsdag. Linkage analysis was carried out using the MAPMAKER/EXP 3.0 computer program (Lincoln et al. 1992). Southern blot analysis of the two radiation-induced *rms* alleles was carried out using standard techniques (see Supplemental Material).

### Ps-MAX4 expression study in pea

Fourteen-day-old cv. Torsdag plants (five leaves expanded, counting acropetally from the cotyledonary node as zero) were left intact or were decapitated below the apex (internode 5) and IAA in lanolin was applied to the decapitated stump, as described by Beveridge et al. (2000). Six hours after treatment, internode 4 was collected. Total RNA was extracted using a modification of the hot-phenol method (Kreig 1996). RT-PCR and Southern blotting were used to determine the abundance of *RMS1* transcripts in these samples. For details, see Supplemental Material.

## Acknowledgments

We thank Yi Li and Sandie Baldauf for help with phylogenetic analysis, Petra Stirnberg for helpful discussions, and Stephen Day for critical read-

ing of the manuscript. The AtNCED7 sequence was kindly provided by Don McCarty. This work was supported by the Biotechnology and Biological Sciences Research Council of the UK, BioGemma, UK, the European Commission, Union Nationale Interprofessionnelle des Plantes riches en Protéines, Génoplante, and the Australian Research Council. E.F. was funded by an Australian Postgraduate Award. We thank the horticultural technicians at York for expert plant care.

The publication costs of this article were defrayed in part by payment of page charges. This article must therefore be hereby marked "advertisement" in accordance with 18 USC section 1734 solely to indicate this fact.

## References

- Altschul, S.F., Gish, W., Miller, W., Myers, E.W., and Lipman, D.J. 1990. Basic local alignment search tool. *J. Mol. Biol.* **215**: 403–410.
- Bangerth, F. 1994. Response of cytokinin concentration in the xylem exudate of bean (*Phaseolus vulgaris* L.) plants to decapitation and auxin treatment, and relationship to apical dominance. *Planta* **194**: 439–442.
- Beveridge, C.A. 2000. Long-distance signaling and a mutational analysis of branching in pea. *Plant Growth Regul.* **32**: 193–203.
- Beveridge, C.A., Symons, G.M., Murfet, I.C., Ross, J.J., and Rameau, C. 1997. The *rms1* mutant of pea has elevated indole-3-acetic acid levels and reduced root-sap zeatin riboside content but increased branching controlled by graft-transmissible signals. *Plant Physiol.* **115**: 1251–1258.
- Beveridge, C.A., Symons, G.M., and Turnbull, C.G.N. 2000. Auxin inhibition of decapitation-induced branching is dependent on graft-transmissible signals regulated by genes *Rms1* and *Rms2*. *Plant Physiol.* **123**: 689–697.
- Beveridge, C.A., Weller, J.L., Singer S.R., and Hofer, J.M.I. 2003. Axillary meristem development: Budding relationships between networks controlling flowering, branching and photoperiod responsiveness. *Plant Physiol.* **131**: 927–934.
- Blixt, S. 1976. Linkage studies in *Pisum*. XV. Establishing the *Rms*-gene and the linkage of *Rms* and *Fas* in chromosome 3. *Agri. Hort. Genet.* **34**: 83–87.
- Booker, J.P., Chatfield, S.P., and Leyser, O. 2003. Auxin acts in xylem-associated or medullary cells to mediate apical dominance. *Plant Cell* **15**: 495–507.
- Brunel, D., Froger, N., and Pelletier, G. 1999. Development of amplified consensus genetic markers (ACGM) in *Brassica napus* from *Arabidopsis thaliana* sequences of known biological function. *Genome* **42**: 387–402.
- Cardon, G.H., Frey, M., Saedler, H., and Gierl, A. 1993. Mobility of the maize transposable element *En/Spm* in *Arabidopsis thaliana*. *Plant J.* **3**: 773–784.
- Chatfield, S.P., Stirnberg, P., Forde, B.G., and Leyser, H.M.O. 2000. The hormonal regulation of axillary bud growth in *Arabidopsis*. *Plant J.* **24**: 159–169.
- Cline, M.G. 1991. Apical dominance. *Bot. Rev.* **57**: 318–358.
- Cline, M.G. 1996. Exogenous auxin effects on lateral bud outgrowth in decapitated shoots. *Ann. Bot.* **78**: 255–266.
- Cline, M.G., Chatfield, S.P., and Leyser, H.M.O. 2001. NAA restores apical dominance in the *axr3-1* mutant of *Arabidopsis thaliana*. *Ann. Bot.* **87**: 61–65.
- Clough, S.J. and Bent, A.F. 1998. Floral dip: A simplified method for *Agrobacterium*-mediated transformation of *Arabidopsis thaliana*. *Plant J.* **16**: 735–743.
- Eklöf, S., Åstot, C., Sitbon, F., Moritz, T., Olsson, O., and Sandberg, G. 2000. Transgenic tobacco plants co-expressing *Agrobacterium iaa* and *ipt* genes have wild-type hormone levels but display both auxin and cytokinin-overproducing phenotypes. *Plant J.* **23**: 279–284.
- Emanuelsson, O., Nielsen, H., Brunak, S., and Heijne, G. 2000. Predicting subcellular localization of proteins based on their N-terminal amino acid sequence. *J. Mol. Biol.* **300**: 1005–1016.
- Foo, E., Turnbull, C., and Beveridge, C.A. 2001. Long distance signaling and the control of branching in the *rms1* mutant of pea. *Plant Physiol.* **126**: 203–209.
- Hall, T.A. 1999. BioEdit: A user-friendly biological sequence alignment editor and analysis program for Windows 95/98/NT. *Nucl. Acids. Symp. Ser.* **41**: 95–98.
- Kreig, P.A. 1996. *A lab guide to RNA isolation, analysis and synthesis*. Wiley-Liss, Chichester, UK.
- Laucou, V., Haurogné, K., Ellis, N., and Rameau, C. 1998. Genetic mapping in pea. 1. RAPD-based genetic linkage map of *Pisum sativum*. *Theor. Appl. Genet.* **97**: 905–915.
- Lincoln, S., Daly, M., and Lander, E.S. 1992. Constructing genetic maps with MAPMAKER/EXP 3.0. In *Whitehead Institute technical Report*, 3rd ed. Whitehouse Technical Institute, Cambridge.
- Morris, D.A. 1977. Transport of exogenous auxin in two-branched dwarf pea seedlings (*Pisum sativum* L.). *Planta* **136**: 91–96.
- Morris, S.E., Turnbull, C.G.N., Murfet, I.C., and Beveridge, C.A. 2001. Mutational analysis of branching in pea. Evidence that *Rms1* and *Rms5* regulate the same novel signal. *Plant Physiol.* **126**: 1205–1213.
- Rameau, C., Bodelin, C., Cadier, D., Grandjean, O., Miard, F., and Murfet, I.C. 1997. New *ramosus* mutants at loci *Rms1*, *Rms3* and *Rms4* resulting from the mutation breeding program at Versailles. *Pisum Genet.* **29**: 7–12.
- Reintanz, B., Lehnen, M., Reichelt, M., Gershenzon, J., Kowalczyk, M., Sandberg, G., Godde, M., Uhle, R., and Palme, K. 2001. *bus*, a bushy *Arabidopsis CYP79F1* knockout mutant with abolished synthesis of short-chain aliphatic glucosinolates. *Plant Cell* **13**: 351–367.
- Sambrook, J., Fritsch, E.F., and Maniatis, T. 1989. *Molecular cloning: A laboratory manual*. Cold Spring Harbor Laboratory Press, Cold Spring Harbor, NY.
- Schwartz, S.H., Qin, X., and Zeevaert, J.A.D. 2001. Characterization of a novel carotenoid cleavage dioxygenase from plants. *J. Biol. Chem.* **276**: 25208–25211.
- Seo, M. and Koshiba, T. 2002. Complex regulation of ABA biosynthesis in plants. *Trends Plant Sci.* **7**: 41–48.
- Stirnberg, P., Chatfield, S.P., and Leyser, H.M.O. 1999. AXR1 acts after lateral bud formation to inhibit lateral bud growth in *Arabidopsis*. *Plant Physiol.* **121**: 839–847.
- Stirnberg, P., Sande, K., and Leyser, H.M.O. 2002. MAX1 and MAX2 control shoot lateral branching in *Arabidopsis*. *Development* **129**: 1131–1141.
- Symons, G.M. and Murfet, I.C. 1997. Inheritance and allelism tests on six further branching mutants in pea. *Pisum Genet.* **29**: 1–6.
- Tantikanjana, T., Yong, J.W.H., Letham, D.S., Griffith, M., Hussain, M., Ljung, K., Sandberg, G., and Sundaresan, V. 2001. Control of axillary bud initiation and shoot architecture in *Arabidopsis* through the *SUPERSHOOT* gene. *Genes & Dev.* **15**: 1577–1588.
- Thimann, K.V. and Skoog, F. 1933. Studies on the growth hormone of plants. III. The inhibiting action of the growth substance on bud development. *Proc. Nat. Acad. Sci.* **19**: 714–716.
- Thompson, J.D., Gibson, T.J., Plewniak, F., Jeanmougin, F., and Higgins, D.G. 1997. The ClustalX windows interface: Flexible strategies for multiple sequence alignment aided by quality analysis tools. *Nucleic Acids Res.* **24**: 4876–4882.
- Tissier, A.F., Marillonnet, S., Klimyuk, V., Patel, K., Torres, M.A., Murphy, G., and Jones, J.D. 1999. Multiple independent defective suppressor-mutator transposon insertions in *Arabidopsis*: A tool for functional genomics. *Plant Cell* **11**: 1841–1852.
- Turnbull, C.G.N., Booker, J.P., and Leyser, H.M.O. 2002. Micrografting techniques for testing long-distance signalling in *Arabidopsis*. *Plant J.* **32**: 255–262.
- Wisman, E., Guillermo, C., Franz, P., and Saedler, H. 1998. The behavior of the autonomous maize element *En/Spm* in *Arabidopsis thaliana* allows efficient mutagenesis. *Plant Mol. Biol.* **37**: 989–999.