



Published in final edited form as:

Hypertension. 2007 April ; 49(4): 717–727.

Measurement of Reactive Oxygen Species in Cardiovascular Studies

Sergey Dikalov, Kathy K. Griendling, and David G. Harrison

From the Division of Cardiology (S.D., K.K.G., D.G.H.), Department of Medicine, Emory University, Atlanta, Ga; and Atlanta Veterans Administration Hospital (D.G.H.), Ga.

Several mammalian enzymes are capable of transferring electrons to molecular oxygen, sequentially forming the 1 electron-reduction product superoxide ($O_2^{\bullet-}$) and the 2 electron-reduction product hydrogen peroxide (H_2O_2). These serve as progenitors for other reactive oxygen species (ROS), including peroxynitrite ($ONOO^-$), hypochlorous acid, the hydroxyl radical, lipid peroxides, lipid peroxy-radicals, and lipid alkoxy radicals. Another relevant group of molecules is the reactive nitrogen species, including NO, the nitrogen dioxide radical, and the nitrosonium cation. In the cardiovascular system, the most important enzymes that produce ROS are the Nox-based reduced nicotinamide-adenine dinucleotide phosphate (NADPH) oxidases, xanthine oxidase, the mitochondrial electron transport system and, under certain circumstances, NO synthase. Conditions such as hypertension, atherosclerosis, hypercholesterolemia, diabetes, and insulin resistance increase either the activity or the expression of these enzymes, leading to elevated ROS production. ROS, in turn, contribute to these disorders. As examples, virtually every aspect of atherosclerotic lesion formation is augmented by oxidative events. Via several mechanisms involving vessels, the kidney, and the central nervous system, ROS augment hypertension. ROS have been implicated in causing insulin resistance and pancreatic damage leading to diabetes. Moreover, ROS, when produced in specific subcellular compartments in controlled amounts, can act as signaling molecules to regulate normal cellular functions. These reactions have been reviewed in depth elsewhere recently.¹

Given the importance of ROS and reactive nitrogen species in physiology and pathophysiology, it has become essential that methods be adapted and standardized to quantify the levels of these molecules in cells and tissues. Numerous methods have been used for ROS detection, each with potential pitfalls and advantages. All of these techniques can yield errors, and it is advisable to use ≥ 2 methods to avoid a mistaken conclusion. In this review, we will discuss various methods used to detect and quantify ROS and consider their advantages and disadvantages.

General Comments

The major reason to measure ROS in biological systems is to determine whether they play a role in physiological or pathophysiological processes. To accomplish this, it is reasonable to adopt Koch's postulates. One should show that the offending species are present in the system

Correspondence to David G. Harrison, Emory University, Division of Cardiology, 319 WMB, 1639 Pierce Dr, Atlanta, GA 30322. E-mail dharr02@emory.edu

Sources of Funding

This work was supported by National Institutes of Health grants HL39006, HL38206, HL58863, and HL59248; National Institutes of Health program project grants HL58000 and HL075209; Department of Veterans Affairs Merit Grant; and American Heart Association grant SDG 0430201N.

Disclosures

None.

of interest. Removal of the species (in the case of ROS, scavenging or knockout of the source) should remedy the condition, and introduction of the species should cause the phenomenon. There are several important caveats here. First, ROS can be highly localized such that assay of an entire cell or segment of tissue might not reflect a subcellular increase, although it usually does. Second, for the same reason, the addition of scavengers, particularly if not properly targeted, might not block the effect. For example, many enzymes produce $O_2^{\bullet-}$ intracellularly, and the addition of superoxide dismutase (SOD) outside the cell will have no effect. Third, one should be aware that most scavengers of $O_2^{\bullet-}$, including SOD and most antioxidant vitamins, remove $O_2^{\bullet-}$ by producing H_2O_2 . If H_2O_2 has a biological role, its effect might not be diminished and, in fact, could be increased by interventions that increase flux from $O_2^{\bullet-}$ to H_2O_2 .

An ideal assay for ROS detection should be sufficiently sensitive to ensure that measurements are within the linear range of the assay and well above the limits of detection. Preferably, it should be specific for 1 ROS, at least in physiological/pathophysiological concentrations. Its signal should be substantially inhibited by a specific scavenger of the ROS in question. It should be robust, that is, applicable to a wide variety of experimental conditions and comparable between these applications. There are some things that should not be expected of assays for ROS. As discussed above, ROS production can be highly localized, and, therefore, most assays will not be able to detect ROS in all of the subcellular locations and extracellularly. Furthermore, the concentration of ROS at the site of production could be extremely high, and this almost certainly will not be reflected by measurements obtained in intact tissues, cells, or in the media in which tissues are incubated. Finally, it is very unlikely that any probe will react with all of the ROS produced, meaning that any assay cannot be viewed as completely quantitative.

Another general comment is that one should take great care in the preparation of buffers to minimize contamination with transition metals. Even the most fastidiously prepared buffers, made with the highest-grade chemicals, can contain trace amounts of transition metals, and great care should be made to minimize this when performing studies of isolated tissues, membranes, and enzyme systems. In our experience, if this is not done, fully one half of the $O_2^{\bullet-}$ formed in a study of isolated tissue homogenates can be attributed to transition metal contaminants. This artifact can be eliminated by treating buffers for several hours with chelex and by using diethylenetriamine-penta-acetic acid in near millimolar concentrations. Experiments with the buffer as a background control are also important to assure that the signals are arising from the tissue sample and not the buffer.

One should also be cautioned about the literature regarding assays for ROS, which is replete with *in vitro* experiments using very contrived experimental situations to disprove the validity of an assay for ROS.²⁻⁵ In any biological assay, it is possible to generate artifacts using extreme conditions that are not encountered *in vivo*. Future experiments should be designed to study these assays in the context of intact tissues and under proper physiological conditions, rather than in artificial “test tube” situations. Results from studies such as these should not be used to refute the use of these assays under properly controlled physiological circumstances.

Finally, there have been attempts to examine activities of various enzymes by adding their substrates to intact tissues. For example, NADPH added to intact vessels has been used as a measure of NADPH oxidase activity. These studies are hard to interpret, because it is unclear how extracellular NADPH enters the cell to be used as a substrate for the NADPH oxidase. There is no established mechanism for cellular uptake of NADPH, and the binding domain to the Nox proteins (the catalytic subunits of the NADPH oxidase) is intracellular. In fact, a recent article showed that NADPH exerts its effects by stimulating purinergic receptors.⁶ Thus, one is not studying NADPH oxidase activity using this approach but rather purinergic signaling.

When subcellular enzyme fractions, such as membranes, are used, receptor signaling pathways are disrupted, and the added substrates are more likely to reach their respective enzyme binding sites to promote ROS production.

Cytochrome C Reduction

The Theory

Oxygen is a diradical, possessing 2 unpaired electrons. As mentioned above, when oxygen gains an additional electron, $O_2^{\bullet-}$ is formed (Figure 1A). Superoxide is generally considered an oxidant, because in most cases, it extracts an electron from another molecule, leading to formation of H_2O_2 . For other molecules with higher electron potentials, $O_2^{\bullet-}$ actually donates its extra electron. This is the case for ferricytochrome c, which is reduced to ferrocycytochrome c by receiving an electron from $O_2^{\bullet-}$. When ferricytochrome c is reduced, its spectrophotometric absorbance is altered in a very specific fashion. Absorbance at 550 nm is increased, whereas absorption at 540 and 560 nm remain unaltered and can serve as isosbestic points (Figure 1B). Unfortunately, ferricytochrome c can be directly reduced by electrons donated from enzymes and other molecules, so this change in absorbance is not specific for $O_2^{\bullet-}$. For this reason, the assay must be performed in the presence and absence of SOD and only the SOD-inhibitable signal used to calculate the amount of $O_2^{\bullet-}$ formed. In studies of the cardiovascular system, cytochrome c reduction has been used to measure $O_2^{\bullet-}$ produced by mouse aortic segments,⁷ human vessels,⁸ mesenteric arterioles,⁹ segments of the cardiac ventricles, and pieces of the left atrium.¹⁰

The Assay

For measurement of $O_2^{\bullet-}$ from a segment of vessel or other tissues, it is necessary to divide the tissue equally. For mouse aortas, two 3-mm rings are placed in a buffer composed of (mmol/L): NaCl, 145; KCl, 4.86; NaH_2PO_4 , 5.7; $CaCl_2$, 0.54; $MgSO_4$, 1.22; glucose, 5.5; deferoxamine mesylate, 0.1; and 50 μ mol/L of acetylated ferricytochrome c. Two other 3-mm segments of aorta are added to a similar buffer containing manganese superoxide dismutase (100 U/mL). The tissues are incubated in a 96-well plate to minimize the volume and, thus, maximize the concentration of $O_2^{\bullet-}$ released from tissues exposed to ferricytochrome c. Acetylation of cytochrome c improves quantification and specificity for $O_2^{\bullet-}$ because it strongly inhibits direct enzymatic reduction, improves stability of the reduced cytochrome c, and has minimal effects on reaction with $O_2^{\bullet-}$.¹¹⁻¹³ To further ensure that any reduced ferricytochrome c is not reoxidized, catalase (125 U/mL) is added to the reaction, which removes any H_2O_2 formed. The tissue pieces are incubated in these reaction mixtures for 30 minutes at 37°C. The tissue is then removed, and the buffer absorbances measured at 540, 550, and 560 nm using a 96-well plate reader. We have found the BioTek Powerwave spectrophotometer to be very useful for these assays, although similar instruments are probably also effective. Figure 1B shows examples of scans encompassing these wavelengths for a background sample, a tissue sample alone, and a tissue sample in the presence of SOD.

To calculate the amount of $O_2^{\bullet-}$ produced, the increase in optical density (ΔOD) at 550 nm over baseline is calculated by averaging the absorbances at 540 and 560 nm and subtracting this value from the reading at 550 nm. The amount of $O_2^{\bullet-}$ formed is calculated from the formula:

$$O_2^{\bullet-} = (\Delta OD \text{ without SOD} - \Delta OD \text{ with SOD}) / 21.1 \text{ mmol} / L^{-1} \text{ cm}^{-1}$$

where ΔOD s with and without SOD represent the shifts in absorbance at 550 nm above the average of OD at 540 and 560 nm. The extinction coefficient for reduced cytochrome c is 21.1 $\text{mmol}/L^{-1} \text{ cm}^{-1}$; thus, the value for $O_2^{\bullet-}$ is in millimoles per liter.

Strengths

Reduction of cytochrome c is considered by many the “gold standard” for detection of $O_2^{\bullet-}$. In the case of professional phagocytes, which produce huge amounts of $O_2^{\bullet-}$, or for isolated enzymes like xanthine oxidase, it is a very powerful and useful method. It allows quantification of $O_2^{\bullet-}$ without addition of a standard, because the extinction coefficient of reduced cytochrome c is known. When corrected for the small volume, and considering that one is measuring changes in OD of microunits, it is clear that one can obtain reasonably accurate estimates of $O_2^{\bullet-}$ in the picomole range, given the caveats mentioned below. The assay can be performed with equipment available in most laboratories.

Weaknesses

Although cytochrome c reduction is a good method for quantifying $O_2^{\bullet-}$ released in large amounts during the respiratory burst of neutrophils or by isolated enzymes, for other tissues, like vessels, vascular smooth muscle cells, endothelial cells, and pieces of cardiac tissue, the level of $O_2^{\bullet-}$ produced is much lower. This means that one is working at the lower limit of the range of detection for $O_2^{\bullet-}$ production using this assay. Tiny errors in the measurement of absorbance, weighing of tissue, pipetting, and so forth, are amplified substantially in the final calculation. For this reason, it is often better to quantify the results per length of vessel used (ie, per 2-mm segments) or volume of tissue rather than to normalize to weight. Another drawback is the assumption that the 2 bits of tissue used in the assay (with and without SOD) are identical. This is never true. For blood vessels, flow profiles have large effects on ROS production, and even small differences in the location of the vessel can affect the mechanical forces to which segment of tissue are exposed. Thus, to normalize a piece of aorta from the mid thorax to one slightly nearer the diaphragm might lead to spurious results and to substantial variability in measurements. This does not entirely preclude the use of cytochrome c for these purposes, but means that caution must be used and that higher numbers of experiments are often necessary to yield useful results. We have also found that the assay is not robust, that is, that it cannot be used under a variety of different conditions. For example, when one adds various enzyme inhibitors, like oxypurinol, apocynin, and N^G -nitro-L-arginine methyl ester, this may inhibit the direct enzymatic reduction of cytochrome c, and the shifts in baseline absorbances can be large. Although appropriate blanks should correct for this, we have found that these baseline shifts make comparisons between various conditions difficult. Finally, cytochrome c reduction only detects extracellular $O_2^{\bullet-}$. Intracellular sources of $O_2^{\bullet-}$ are likely underestimated by this approach.

The Verdict

Cytochrome c reduction is a time-honored approach for measuring $O_2^{\bullet-}$. It is difficult, but not impossible, to apply to vascular and myocardial tissues because one is working at the lower limit of the assay's sensitivity. The results are more variable than other methods, making it necessary to use a large “n.” Given these caveats, it is almost always accepted by reviewers without question.

Chemiluminescence-Based Techniques

The Theory

On exposure to $O_2^{\bullet-}$, chemiluminescent probes release a photon, which, in turn, can be detected by a scintillation counter or a luminometer. Because most of these compounds are cell permeable, the $O_2^{\bullet-}$ measured reflects extracellular, as well as intracellular, $O_2^{\bullet-}$ production. The most commonly used chemiluminescence technique for measurement of $O_2^{\bullet-}$ is lucigenin-enhanced chemiluminescence. For this reason, this section will focus on lucigenin with a brief discussion of other chemiluminescence methods.

The reactions (1 through 3) involved in lucigenin-amplified chemiluminescence (LC) are as follows: (1) reaction 1: $O_2^{\bullet-} + LC^{2+} \rightarrow LC^{\bullet+} + O_2$; (2) reaction 2: $LC^{\bullet+} + O_2^{\bullet-} \rightarrow LCO_2$; and (3) reaction 3: $LCO_2 \rightarrow 2N\text{-methylacridone} + hv$. Thus, $O_2^{\bullet-}$ reduces lucigenin (LC^{2+}) to its cation radical ($LC^{\bullet+}$), which, in turn, reacts with a second $O_2^{\bullet-}$ to form the energy-rich dioxetane molecule (LCO_2), which then emits a photon.

The Assay

Two 3-mm segments of vessels or similar-sized pieces of other tissues are dissected free of adjacent tissues in a Krebs/HEPES buffer. For the assay, a Krebs/HEPES buffer containing 5 μmol /lucigenin of is prepared. We have found that the results are most consistent if this buffer is "dark adapted." The buffer is placed in either a luminometer or scintillation counter set to the out-of-coincidence mode and incubated until background counts have stabilized. Tissue segments are then added to the reaction vial, and, after 15 minutes of equilibration, counts are obtained every minute for the next 5 minutes and averaged. Counts can be expressed as chemiluminescence units, can be normalized to surface area of the tissue or to segments of tissue if great care is taken to prepare segments of identical size, or can be normalized to wet or dry weight.

Strengths of Lucigenin-Enhanced Chemiluminescence

This method has been widely used, and an enormous amount of new information has been gained from its use. It is reasonably specific for $O_2^{\bullet-}$, and one does not need to routinely prepare a second sample with SOD to prove that the signal is derived from $O_2^{\bullet-}$. If one chooses to use an $O_2^{\bullet-}$ scavenger, it should be kept in mind that lucigenin penetrates cells, and, therefore, unmodified SOD, which is not cell permeable, will not reduce the lucigenin signal completely (usually $\leq 50\%$). Generally the lucigenin-enhanced chemiluminescence signal is well within the linear range of pathological samples, although normal tissues produce low levels of $O_2^{\bullet-}$, which are generally only slightly above background. The assay is also inexpensive and can be performed using equipment that is commonly available.

Weaknesses and Alternate Chemiluminescence Probes

Despite the above strengths, the validity of lucigenin-enhanced chemiluminescence has been questioned on the grounds that $O_2^{\bullet-}$ production might be artificially overestimated because of a phenomenon known as redox cycling, in which the lucigenin radical can react with oxygen to generate $O_2^{\bullet-}$.²

Reaction 4 is as follows: $LC^{\bullet+} + O_2 \rightarrow O_2^{\bullet-} + LC^{2+}$. This reaction is catalyzed by flavin containing enzymes such as endothelial NO synthase, xanthine oxidase, and cytochrome P450 monooxygenases, and, as shown in reaction 4, leads to oxygen consumption. Although there is no question that reaction 4 occurs in biological tissues, the main issue is how much it contributes to the total signal one detects in an assay of tissue. When 5 $\mu\text{mol/L}$ of lucigenin is used, the amount of artifact is probably insignificant.¹⁴ As discussed above, many of the experiments demonstrating lucigenin redox cycling have been performed in artificial situations and do not reflect the manner in which this assay is used under normal circumstances.

Other chemiluminescent probes have been used to detect ROS of various kinds. One of the oldest is luminol (5-amino-2,3-dihydro-1,4-phthalazinedione).¹⁵ This compound is oxidized by a variety of ROS, including H_2O_2 , hydroxyl radical, hypochlorous acid, and peroxynitrite. The assay is essentially identical to that described above for lucigenin. One can add specific scavengers to assess the contribution of various ROS, that is, catalase (≈ 100 U/mL) for H_2O_2 and urate (250 $\mu\text{mol/L}$) for peroxynitrite. In the past several years L-012, a modified form of luminol, has been proposed to be the specific probe for $O_2^{\bullet-}$. However, this molecule may also detect $ONOO^-$ and probably other ROS.¹⁶ Its light emission is reported to be greater

than lucigenin, but beyond this, it may not provide any clear cut advantage to lucigenin. L-012 has been reported not to undergo redox cycling, but examination of its structure, as well as the structure of luminol, suggests that they have potential to do so.

Beginning in the 1980s, a series of fluorescent compounds were developed from coelenterazine (2-[4-hydroxybenzyl]-6-[4-hydroxyphenyl]-8-benzyl-3,7 dihydroimidazo[1,2-a]pyrazin-3-1).¹⁷ Coelenterazine is the molecule responsible for the fluorescence of various bioluminescent marine organisms in the genus cypradina and is the light-emitting component of the fluorescent protein aequorin. Coelenterazine does not undergo redox cycling and was found to be useful as a probe for the detection of $O_2^{\bullet-}$.⁴ Modifications of the cypridina luciferin led to production of a series of new compounds, including the cypridina luciferin analog (CLA) and the methylated-modified CLA (MCLA). Of these, MCLA seems to have the highest signal:background ratio and emits >100-fold more light for the same stimulus as coelenterazine. CLA and MCLA have been used to measure $O_2^{\bullet-}$ production by vessels,¹⁸ cultured endothelial cells,¹⁹ vascular smooth muscle cells,²⁰ and other tissues.²¹ One report indicated that MCLA could also emit light in response to the hydroxyl radical in bicarbonate buffers,²² and high levels of other ROS have been shown to elicit MCLA chemiluminescence.²³

The Verdict

Chemiluminescence-based techniques, and, in particular, lucigenin-enhanced chemiluminescence have provided enormous insight into how various diseases like atherosclerosis, hypertension, diabetes, and heart failure affect $O_2^{\bullet-}$ production in various tissues. Virtually every result with lucigenin has been confirmed using other methodologies. Despite this, these assays remain controversial, and reviewers often criticize articles using these techniques. Concerns persist about how important redox cycling is, what ROS are being measured, and whether the signals might be nonspecific. In the case of lucigenin, when low concentrations are used with intact tissues, redox cycling probably contributes to the entire signal only minimally. The cypradina luciferin-based molecules CLA and MCLA are promising probes for $O_2^{\bullet-}$, but their use has been limited and not validated under a variety of conditions. Given these concerns, it is highly recommended that a second assay, preferably not based on chemiluminescence, be used to confirm the results.

Electron Spin Resonance

The Theory

Electron spin resonance (or electron paramagnetic resonance; ESR) is based on absorption of microwave radiation stimulated by an electromagnetic field in molecules such as free radicals and transition metal ions with unpaired electrons. The typical ESR spectrometer consists of a microwave generator, a resonator cavity flanked by a pair of electrical magnets (Figure 2A). Microwaves are delivered from a generator to the resonator cavity, and when the spectrometer is tuned, all of the energy delivered to the resonator is absorbed so that no microwave energy is reflected back from the resonator cavity. When a magnetic field is applied to the sample, the paramagnetic unpaired electrons act like tiny compasses that orient either in a direction parallel or antiparallel to the magnetic field. This creates 2 distinct energy levels for the unpaired electrons such that the absorption of microwave energy causes a transition from the lower state to the higher state (Figure 2B). This transition occurs when the magnetic field (B_0) causes a difference between the 2 states of electron energy equal to the microwave energy ($h\nu = g \times \mu_B \times B$), where “ $h\nu$ ” is the microwave energy, “ g ” is the factor constant equal to 2.002 for most organic samples, and “ μ_B ” is the Bohr magneton constant.²⁴ In summary, ESR detects the absorption of microwave energy, which occurs on transition of unpaired electrons in an

applied magnetic field. The amplitude of the ESR signal is proportional to the number of the unpaired electrons present in the sample (Figure 2B), allowing quantification of free radicals.

If an unpaired electron existed in the sample by itself, the spectrum obtained would be quite boring, consisting of only 1 peak. Fortunately, electrons are always accompanied by nuclei, which have magnetic moments that produce a local magnetic field at the unpaired electron. This tiny local magnetic field subtracts from or adds to the exogenous magnetic field applied by the spectrometer, depending on the alignment of the magnetic moment of the nucleus, phenomena referred to as hyperfine interactions.²⁵ In the case where the nucleus adds to the electron's magnetic field, it takes a lower amount of external magnetic energy to cause absorption of microwaves and yield a signal. In contrast, when the magnetic moment of nearby nuclei subtracts from the electron's magnetic field, a higher exogenous magnetic field is needed to cause electron transition. Hyperfine interactions result in several peaks being detected by the spectrometer as the magnetic field is increased and provide information about the identity and number of atoms that make up a molecule, as well as their distances from the unpaired electron.

Unprocessed ESR absorption signals are very broad and unresolved. Because of this, ESR spectroscopy uses a technique known as phase-sensitive detection to enhance sensitivity of the spectrometer. The magnetic field is modulated sinusoidally at the modulation frequency, and, in case of the ESR signal, microwaves reflected from the cavity are also amplitude modulated at the same frequency. This transforms the ESR signal into a sine wave with the amplitude proportional to the slope of the signal, that is, a first derivative of the original absorption curve. The amplitude of the sine wave is proportional to the amount of the free radical.

Most of the biologically relevant radicals are very short lived and, therefore, impossible to detect in biological samples. For this reason, compounds have been used that form stable adducts with radicals.²⁶ The molecules, termed "spin traps," include nitron compounds such as *N*-*t*-butyl- α -phenylnitron, α -(4-pyridyl 1-oxide)-*N*-*tert*-butylnitron, 5, 5-dimethyl-1-pyrroline-*N*-oxide, 5-(diethoxyphosphoryl)-5-methyl-1-pyrroline-*N*-oxide, and 2-ethoxycarbonyl-2-methyl-3,4-dihydro-2H-pyrrole-1-oxide.²⁷ The reactions of spin traps with radicals results in adducts that yield specific spectra when subjected to ESR spectroscopy. Some of these (*N*-*t*-butyl- α -phenylnitron and α -[4-pyridyl 1-oxide]-*N*-*tert*butylnitron) work well for trapping carbon-centered radicals, such as lipid radicals,²⁸ whereas others (5,5-dimethyl-1-pyrroline-*N*-oxide and 5-[diethoxyphosphoryl]-5-methyl-1-pyrroline-*N*-oxide) are often used for trapping $O_2^{\bullet-}$ and $\bullet OH$.²⁹ Spin traps can be used to both identify and quantify the original radical formed. Theoretically, spin trapping with nitrones should be an ideal way to detect radicals in biological tissues. Unfortunately, this turns out not to be the case. First, nitron radical adducts are unstable. For example, when 5,5-dimethyl-1-pyrroline-*N*-oxide and 5-(diethoxyphosphoryl)-5-methyl-1-pyrroline-*N*-oxide react with $O_2^{\bullet-}$, they initially form adducts that yield hyperfine splits typical of the $O_2^{\bullet-}$ adduct. Within seconds to minutes, however, intracellular glutathione peroxidase rapidly converts these to alcohols, which are identical to OH -radical adducts.^{30,31} Thus, one cannot discern formation of $O_2^{\bullet-}$ from $\bullet OH$ without using specific scavengers. This negates one of the advantages of the nitron spin traps. Second, spin traps have low reactivity with $O_2^{\bullet-}$ ($74 \text{ mol/L}^{-1} \text{ s}^{-1}$) compared with other $O_2^{\bullet-}$ probes, such as cytochrome *c* ($3 \times 10^6 \text{ mol/L}^{-1} \text{ s}^{-1}$).³² More importantly, nitron radical adducts are very susceptible to bioreduction when exposed to cells or tissues, and their 1-electron reduction by flavins, thiols, or ascorbate converts them to ESR silent species (Figure 3A). Because of this, it is difficult to accurately quantify radicals formed in intact tissues, cells, or homogenates using the currently available nitron spin traps. Recently, a caged nitron spin trap has been developed and reported to specifically detect $O_2^{\bullet-}$ in biological samples and to be resistant to degradation by reductants.³³ Additional studies are needed to determine whether this will be useful in biological samples.

Because of these problems using nitron spin traps, investigators have turned to other molecules as probes for detection of ROS in tissues. One such class of compounds, the cyclic hydroxylamines, has proven extremely effective for use in tissues and cultured cells.³⁴ These molecules are not spin traps, in that they do not “trap” radicals, but they are oxidized to form stable radicals with a half-life of several hours, which can readily be detected by ESR. Cyclic hydroxylamines, such as 1-hydroxy-3-carboxy-2,2,5,5-tetramethyl-pyrrolidine hydrochloride (CPH), can provide quantitative measurements of $O_2^{\bullet-}$ radicals with high sensitivity.³⁵ The half life of 3-carboxy-proxyl radical has been shown to vary from 330 minutes in smooth muscle cells to 87 minutes in the presence of ascorbate.³⁶ CPH was used for in vivo $O_2^{\bullet-}$ detection,³⁴ whereas 3-carboxy-proxyl radical clearance was mainly dependent on renal excretion and was not depend on reaction with ascorbate.^{37,38} CPH reacts rapidly with $O_2^{\bullet-}$ ($3.2 \times 10^3 \text{ mol/L}^{-1} \text{ s}^{-1}$) and $ONOO^-$ (Figure 3B), and the resultant 3-carboxy-proxyl radical is very stable, undergoing minimal bioreduction.³⁶ Because these compounds can be oxidized by several ROS, it is necessary to perform paired experiments where SOD, an $ONOO^-$ scavenger, or other scavengers are added to define the ROS causing the reaction. We have found that SOD lowers the signal by >70% in cultured cells or isolated vessels.³⁹ Another cell permeable cyclic hydroxylamine, 1-hydroxy-3-methoxycarbonyl-2,2,5,5-tetramethylpyrrolidine (CMH), has been used for detection of intracellular $O_2^{\bullet-}$ in cultured cells and tissue samples (Figure 3B).^{35,39} Recently, we have validated 1-hydroxy-2,2,6,6-tetramethylpiperidin-4-yltrimethylammonium and found this to be extremely useful for detecting extracellular $O_2^{\bullet-}$ produced by intact tissues.⁹ This probe seems particularly resistant to auto-oxidation.

The Assay

To minimize hydroxylamine auto-oxidation, the spin probe stock solutions must be prepared in argon-bubbled ice-cold 0.9% NaCl in the presence of the chelating agent diethylenetriamine-penta-acetic acid (0.1 mmol/L) or a combination of 25 $\mu\text{mol/L}$ of deferoxamine and 2 $\mu\text{mol/L}$ of diethyldithiocarbamate. Three 2-mm mouse aortic rings or similar-sized pieces of other tissues are incubated for 60 minutes at 37°C in 1 mL of Krebs/HEPES buffer containing 2 $\mu\text{mol/L}$ of diethyldithiocarbamate, 50 $\mu\text{mol/L}$ of deferoxamine, and 0.5 mmol/L of CMH. The segments are then frozen in liquid nitrogen, and ESR spectra are recorded using the following ESR settings: field sweep, 80 G; microwave frequency, 9.39 GHz; microwave power, 2 mW; modulation amplitude, 5 G; conversion time, 327.68 ms; time constant, 5242.88 ms; 512 points resolution; and receiver gain, 1×10^4 . The amplitude of the signal is measured, and the concentration of CM-radical is determined by calibration with standard concentrations of the nitroxide TEMPOL. The portion of the signal because of $O_2^{\bullet-}$ is determined by preincubation of duplicate samples with polyethylene glycol-SOD (100 U/mL) for 3 to 4 hours in Krebs/HEPES buffer. After the ESR measurement, rings are transferred into Eppendorf tubes, dried for 48 hours at 37°C, and their dry weight is determined. The formation of 3-methoxycarbonyl-proxyl (CM)-nitroxide is normalized to the dry weight of aorta rings. A similar approach can be used to measure extracellular $O_2^{\bullet-}$, using the cell-impermeable 1-hydroxy-2,2,6,6-tetramethylpiperidin-4-yl-trimethylammonium spin probe.⁹ In this case, aortas are incubated for 60 minutes at 37°C in 210 μL of Krebs/HEPES buffer containing 0.5 mmol/L of 1-hydroxy-2,2,6,6-tetramethylpiperidin-4-yl-trimethylammonium in the presence or absence of Cu, ZnSOD (100 U/mL). The buffer without the vessel is then aspirated into a tuberculin syringe, snap frozen in liquid nitrogen, and scanned as described for CMH.

We have also found cyclic hydroxylamines to be very useful in detecting $O_2^{\bullet-}$ released from intact cells. For example, cultured cells can be harvested and placed in buffer containing either CPH or CMH, which is then transferred to an ESR capillary tube and placed in the ESR resonator at room temperature. The rate of rise of the low field peak of the spectrum can be used to calculate the rate of ROS formation. In the case of CPH, a similar assay can be

performed in the presence of SOD. When the cell-permeable CMH is used, polyethylene-glycolated SOD (100 U/mL) can be added 4 hours before cells are studied to determine the contribution of $O_2^{\bullet-}$ to the signal.⁴⁰ We have used this approach to detect $O_2^{\bullet-}$ production for cultured endothelial cells, neutrophils, and vascular smooth muscle cells.

ESR can be used to monitor the activity of various enzymes in cell or tissue homogenates. In these cases, either whole homogenates or membrane fractions can be added to the buffer in the presence of a spin probe like CPH,^{10,41} and the enzyme activity stimulated by adding the specific substrate, for example, xanthine in the case of xanthine oxidase or NADPH in the case of the NADPH oxidase. Again, the rate of rise of the low field peak of the ESR spectra is monitored. The rate of $O_2^{\bullet-}$ production can be determined at room temperature by time scan after the amplitude low field peak of the ESR spectra, or when frozen samples are used, the height of the spectra obtained from a field scan can be used.

Strengths

Electron spin resonance is an excellent approach for the detection of radicals. When studying isolated enzymes or chemical reactions, the nitron spin traps are very useful for determining the precise product formed or for detecting reaction intermediates. For studies of intact tissues, cells, or homogenates, the cyclic hydroxylamines offer a distinct advantage over nitron spin traps for measurement of $O_2^{\bullet-}$ and other radicals, because they yield very stable products and strong ESR signals. These methods are also quantitative. By selecting the proper spin probe, one can restrict measurements to intracellular or extracellular compartments. The values obtained when studying cultured cells, intact vessels, or other segments of tissue are well within the sensitivity of ESR when cyclic hydroxylamines are used, which can reach 1 nmol/L.

Weaknesses

As discussed above, the nitron spin traps, often considered ideal for detection of various radicals, cannot be used with intact tissues or cells, because they are converted to spin inactive products by bioreductants. The cyclic hydroxylamines are, therefore, preferable; however, the product formed on reaction with different radicals yields the same nitroxide regardless of the radical or oxidant trapped,³⁵ and the resultant ESR spectrum is, therefore, identical for several different species. To overcome this limitation, it is necessary to perform additional studies using various antioxidants and inhibitors specific for the ROS in question. For example, $O_2^{\bullet-}$ radicals can be determined as SOD-inhibitable 3-carboxyproxyl radical–nitroxide formation, and $ONOO^-$ can be measured as urate-inhibited 3-carboxy-proxyl radical–nitroxide formation.⁴² New spin probes are constantly being developed to improve their stability and selectivity.

A major weakness of ESR is that the spectrometers are very expensive, often costing several hundred thousand dollars. They also occupy a large amount of space, generally requiring a 600-ft² laboratory room for proper operation. This is prohibitive for many investigators. Tabletop spectrometers are available, which are much less expensive and less space consuming. These are not as sensitive or versatile as the larger floor models. Because of the strength of the signals generated by the cyclic hydroxylamines, it has been possible to use these tabletop models for studies of vessels and cells.

A final weakness of ESR is that it is almost essential to have extensive training to operate the spectrometers correctly. Unlike other methods for ROS detection, one cannot simply read manuals or papers to understand all of the nuances of this technique or the equipment involved.

The Verdict

ESR is an elegant method for the detection of radicals. For studies of vessels and other tissues, the best currently available approach is to use cyclic hydroxylamines as probes. Newly developed nitron spin traps that are resistant to bioreduction may provide a superior approach, because they could yield specific spectra for various radicals. The major detractions of ESR are its expense and the need for a trained spectroscopist to oversee use of this equipment.

Detection of Intracellular $O_2^{\bullet-}$ With Dihydroethidium and High-Performance Liquid Chromatography

The Theory

Initially, it was thought that dihydroethidium (DHE) reacted with $O_2^{\bullet-}$ to form ethidium, which would, in turn, intercalate with nDNA. Tissues were visualized using fluorescence microscopy, and the intensity of the signal was interpreted as reflecting the level of $O_2^{\bullet-}$ present. Recently, it has been found that this is not precisely correct. The reaction of dihydroethidium with $O_2^{\bullet-}$ yields a very specific product, 2-hydroxyethidium (Figure 4A), with a molecular weight 16 U greater than DHE.^{43,44} The rate constant of the reaction of DHE with $O_2^{\bullet-}$ is estimated as high as $2.6 \times 10^6 \text{ mol/L}^{-1} \text{ s}^{-1}$.⁴³ In cells and tissues, ethidium can also be formed from DHE, but this is not a specific $O_2^{\bullet-}$ product and seems to reflect the redox status of the cell (Figure 4B through 4E).⁴⁵ 2-Hydroxyethidium can be readily separated from its parent DHE and ethidium by performing high-performance liquid chromatography (HPLC), and the 2-hydroxyethidium peak can then be used to estimate the intracellular production of $O_2^{\bullet-}$.⁴⁵

The Assay

Three 2-mm mouse aortic rings or similar segments of tissue are incubated for 30 minutes at 37°C in 1 mL of Krebs/HEPES buffer containing 50 $\mu\text{mol/L}$ of DHE at 37°C. Sources of intracellular $O_2^{\bullet-}$ can be analyzed by preincubation of the tissue with the xanthine oxidase inhibitor oxypurinol, the NADPH oxidase inhibitor apocynin, or the endothelial NO synthase inhibitor N^G -nitro-L-arginine methyl ester. The tissue is then homogenized in 300 μL of methanol, and 50 μL of homogenate are used for protein determination. The remainder of the sample is passed through a 0.22- μm syringe filter and then used for HPLC analysis. DHE, 2-hydroxyethidium, and ethidium are separated using a C-18 reverse-phase column (Nucleosil 250 to 4.5 mm) and a mobile phase containing 0.1% trifluoroacetic acid and an acetonitrile gradient (from 37% to 47% over 23 minutes) at a flow rate of 0.5 mL/min (Figure 4). Ethidium and 2-hydroxyethidium are detected with a fluorescence detector using an emission wavelength of 580 nm and an excitation of 480 nm. UV absorption at 355 nm is used for detection of DHE. The 2-hydroxyethidium peak reflects the amount of $O_2^{\bullet-}$ formed in the tissue during the incubation and is expressed per milligram of protein. Superoxide appears to be the major source of the basal level of 2-hydroxyethidium product formed in untreated control-type tissue (Figure 4). There is often, however, a small background signal from the DHE stock.⁴⁵ We use a Beckman Gold HPLC with a Jasco fluorescence detector, but other similar devices can be used.

It is important to mention a potential advantage of using DHE fluorescence imaging for detection of localization of $O_2^{\bullet-}$ generation in a tissue preparation such as a vascular segment. This provides a spatial distribution of $O_2^{\bullet-}$ production and can provide a qualitative evidence of increased $O_2^{\bullet-}$.⁴⁶

Strengths

Unlike ESR, this assay can be performed with equipment commonly available in research departments. Aside from familiarity with HPLC, specific training is not required. The product 2-hydroxyethidium specifically reflects the reaction of $O_2^{\bullet-}$ with DHE and is easily quantified

using this approach. When vessels are used, the values of 2-hydroxyethidium obtained are well within the linear range of the assay and above the detection limit. This assay provides results that have been correlated with other methods, such as the cytochrome c assay; however, it provides advantages over the cytochrome c assay, because it can be used to detect intracellular $O_2^{\bullet-}$. Moreover, samples can be stored after incubation and the HPLC assays performed at later time. We have found that samples stored at -20°C are stable for several months. This can also allow frozen samples to be sent to another laboratory for analysis if needed.

Weaknesses

DHE is a light-sensitive dye. For this reason, all of the procedures should be performed in dim light. DHE can react with oxygen in solution. We, therefore, recommend that DHE be prepared as a stock solution in argon-purged buffers using dark tubes.

The Verdict

The detection of 2-hydroxyethidium formation from DHE is a simple and accurate method for estimating intracellular $O_2^{\bullet-}$. Given that 2-hydroxyethidium is not formed by other common oxidants, this assay is as close to being a “gold standard” for detecting $O_2^{\bullet-}$ in intact tissues or cells as anything currently available.

Detection of Intracellular H_2O_2 With DCF-DA

The Theory

One of the most commonly used probes for the detection of intracellular ROS formation is 2',7'-dichlorofluorescein diacetate (DCFH-DA).⁴⁷⁻⁴⁹ DCFH-DA is cell permeable, and, after uptake, it is cleaved by intracellular esterases to 2',7'-dichlorofluorescein (DCFH), trapped within the cells, and oxidized to the fluorescent molecule 2',7'-dichlorofluorescein (DCF) by a variety of ROS (Figure 5A).⁵⁰ DCFH-DA is considered a general indicator of ROS, reacting with H_2O_2 , $ONOO^-$, lipid hydroperoxides, and, to a lesser extent, $O_2^{\bullet-}$. Because H_2O_2 is a secondary product of $O_2^{\bullet-}$, DCF fluorescence has been used to implicate $O_2^{\bullet-}$ production.

The Assay

For in situ localization of H_2O_2 , cultured cells or frozen sections of arteries are incubated with DCFH-DA (5 $\mu\text{mol/L}$; Molecular Probes)⁵¹ for 30 minutes at 37°C .⁵² H_2O_2 detection is confirmed by simultaneously treating replicate sections or dishes with polyethylene glycol-catalase (350 U/mL). Sections or dishes incubated with vehicle can serve as negative controls. All of the images are acquired at identical settings. For cultured cells, DCFH-DA fluorescence can also be measured using fluorescence-activated cell sorter analysis.⁵³

Strengths

As discussed above, once cleaved, DCFH is cell impermeable and, therefore, has been used to detect intracellular ROS. Another strength is the ability to localize cellular production of ROS within the tissue, and the sensitivity to detect ROS within a single cell. Analysis of intracellular H_2O_2 with DCFH-DA by flow cytometry or imaging has also been used to measure intracellular ROS. Recently, Molecular Probes has developed 5,6-chloromethyl-2,7-dichlorodihydrofluorescein diacetate,⁵⁴ which is reported to be retained in living cells better than DCFH-DA.

Weaknesses

Despite its advantages, the DCFH-DA technique is often criticized. Photoreduction of DCF results in artificial production of a semiquinone radical that in turn can reduce oxygen to $O_2^{\bullet-}$.⁵⁵ In addition, the oxidation of DCFH to the DCF can be self-catalyzed by peroxidases.

⁵⁶ Third, redox reactions with DCF and DCFH can lead to formation of the DCF-free radical anion⁵⁷ which not only generates $O_2^{\bullet-}$, but also reacts with antioxidants such as ascorbate and thiols.⁵⁸ Dismutation of this $O_2^{\bullet-}$ to H_2O_2 can result in self-amplification of DCF fluorescence. Finally, oxidation of DCFH by H_2O_2 is a very indirect reaction and requires peroxidase activity, transition metals, and heme enzymes.⁵⁹ Therefore, conditions that alter cellular peroxidase levels could affect DCF fluorescence independent of ROS levels.

The Verdict

Although DCF-DA and its related compounds have been used extensively, there is substantial evidence to suggest that these molecules can generate ROS and, thus, artifacts. Great care should be taken in interpreting results obtained using this probe, and the use of alternate probes is encouraged.

Detection of Extracellular H_2O_2 With Amplex Red

The Theory

The Amplex Red assay, developed by Molecular Probes, involves measurement of H_2O_2 by the horseradish peroxidase-catalyzed oxidation of the colorless and nonfluorescent molecule N-acetyl-3, 7-dihydroxyphenoxazine (Amplex Red) to resorufin, which, when excited at 530 nm, strongly emits light at 590 nm (Figure 5B).⁶⁰

The Assay

Three aortic segments (2-mm rings) are placed in the well of a 96-well plate and incubated with Amplex Red (10 $\mu\text{mol/L}$) and horseradish peroxidase (0.2 U/mL) for 60 minutes at 37° C in Krebs Ringer's phosphate glucose buffer (145 mmol/L of NaCl, 5.7 mmol/L of sodium phosphate, 4.86 mmol/L of KCl, 0.54 mmol/L of $CaCl_2$, 1.22 mmol/L of $MgSO_4$, and 5.5 mmol/L of glucose) protected from light. The tissue is removed from the buffer, and the buffer's fluorescence is detected at 590 nm using an excitation 530 nm. Background fluorescence, determined using a reaction without tissue, is subtracted from each value. H_2O_2 release, calculated using H_2O_2 standards or standard solutions of resorufin, is expressed as picomoles per milligram of dry tissue.⁶¹ In some experiments, SOD (40 U/mL) or catalase (200 U/mL) can be added to the tissue samples.

Strengths

The Amplex Red assay is highly specific and sensitive, with a limit of detection of ≈ 5 pmol of H_2O_2 . We have found that the signal is consistently abolished by exogenous catalase. The stoichiometry of Amplex Red and H_2O_2 is 1:1, and, therefore, the assay results are linear over the range of values encountered in tissues and cells. Resorufin is a very stable product that allows detection of H_2O_2 both in oxidative and reductive conditions. The assay is quite simple and can be performed using standard, readily available equipment. Because of its commercial availability, it does not require special reagents.

Weaknesses

The Amplex Red dye is somewhat unstable. At high concentrations (50 $\mu\text{mol/L}$) it can be auto-oxidized and produce $O_2^{\bullet-}$ and H_2O_2 . Low concentrations of Amplex Red (10 $\mu\text{mol/L}$) minimize this problem. Amplex Red detects H_2O_2 released from tissues and does not provide a measure of intracellular H_2O_2 . H_2O_2 is diffusible, however, and reaches equilibrium with the tissue's surrounding buffer, so that values measured in the buffer should provide an index of what was originally produced by the tissue.

The Verdict

The Amplex Red assay is useful for the measurement of H₂O₂ released by cells and tissues and can be applied to cell-free systems.

Perspectives

The precise measurement of ROS in vascular cells and tissues represents a challenge because of their low levels and transient lifetimes. The choice of an assay for a particular application will depend on the tissue to be studied, the ROS of interest, and the amount generated. Given the limitations of each assay, and the availability of alternative methodology, we recommend the concomitant use of ≥ 2 ROS assays to ensure accuracy and specificity of measurements. As outlined in this review, many techniques have been developed, refined, and applied successfully. Continued efforts should be made to refine these techniques and increase their specificity, permitting us to expand our understanding of the role of ROS in cardiovascular physiology and pathophysiology.

References

- Harrison DG, Dikalov S. Oxidative events in cell and vascular biology. In: Re R, DiPette D, Schiffrin E, Sowers J, editors. *Molecular Mechanisms in Hypertension*. 1st ed. Taylor & Francis Medical Books; Abingdon, United Kingdom: 2006. p. 297-320.
- Liochev SI, Fridovich I. Lucigenin (bis-N-methylacridinium) as a mediator of superoxide anion production. *Arch Biochem Biophys* 1997;337:115–120. [PubMed: 8990275]
- Rost M, Karge E, Klinger W. What do we measure with luminol-, lucigenin- and penicillin-amplified chemiluminescence? 1. Investigations with hydrogen peroxide and sodium hypochlorite. *J Biolumin Chemilumin* 1998;13:355–363. [PubMed: 9926363]
- Tarpey MM, White CR, Suarez E, Richardson G, Radi R, Freeman BA. Chemiluminescent detection of oxidants in vascular tissue. Lucigenin but not coelenterazine enhances superoxide formation. *Circ Res* 1999;84:1203–1211. [PubMed: 10347095]
- Votyakova TV, Reynolds IJ. Detection of hydrogen peroxide with Amplex Red: interference by NADH and reduced glutathione auto-oxidation. *Arch Biochem Biophys* 2004;431:138–144. [PubMed: 15464736]
- Judkins CP, Sobey CG, Dang TT, Miller AA, Dusting GJ, Drummond GR. NADPH-induced contractions of mouse aorta do not involve NADPH oxidase: a role for P2X receptors. *J Pharmacol Exp Ther* 2006;317:644–650. [PubMed: 16407465]
- Landmesser U, Dikalov S, Price SR, McCann L, Fukai T, Holland SM, Mitch WE, Harrison DG. Oxidation of tetrahydrobiopterin leads to uncoupling of endothelial cell nitric oxide synthase in hypertension. *J Clin Invest* 2003;111:1201–1209. [PubMed: 12697739]
- Guzik TJ, Mussa S, Gastaldi D, Sadowski J, Ratnatunga C, Pillai R, Channon KM. Mechanisms of increased vascular superoxide production in human diabetes mellitus: role of NAD(P)H oxidase and endothelial nitric oxide synthase. *Circulation* 2002;105:1656–1662. [PubMed: 11940543]
- Gongora MC, Qin Z, Laude K, Kim HW, McCann L, Folz JR, Dikalov S, Fukai T, Harrison DG. Role of extracellular superoxide dismutase in hypertension. *Hypertension* 2006;48:473–481. [PubMed: 16864745]
- Dudley SC Jr, Hoch NE, McCann LA, Honeycutt C, Diamandopoulos L, Fukai T, Harrison DG, Dikalov SI, Langberg J. Atrial fibrillation increases production of superoxide by the left atrium and left atrial appendage: role of the NADPH and xanthine oxidases. *Circulation* 2005;112:1266–1273. [PubMed: 16129811]
- Azzi A, Montecucco C, Richter C. The use of acetylated ferricytochrome c for the detection of superoxide radicals produced in biological membranes. *Biochem Biophys Res Commun* 1975;65:597–603. [PubMed: 167777]
- Green TR, Pratt KL. A reassessment of the product specificity of the NADPH:O₂ oxidoreductase of human neutrophils. *Biochem Biophys Res Commun* 1987;142:213–220. [PubMed: 3028401]

13. Nasrallah VN Jr, Shirley PS, Myrvik Q, Waite M. The use of acetylated cytochrome c in detecting superoxide anion production in rabbit alveolar macrophages. *J Immunol* 1983;131:2104–2106. [PubMed: 6313802]
14. Li Y, Zhu H, Kuppusamy P, Roubaud V, Zweier JL, Trush MA. Validation of lucigenin (bis-N-methylacridinium) as a chemilumigenic probe for detecting superoxide anion radical production by enzymatic and cellular systems. *J Biol Chem* 1998;273:2015–2023. [PubMed: 9442038]
15. Faulkner K, Fridovich I. Luminol and lucigenin as detectors for O_2^- . *Free Radic Biol Med* 1993;15:447–451. [PubMed: 8225026]
16. Daiber A, Oelze M, August M, Wendt M, Sydow K, Wieboldt H, Kleschyov AL, Munzel T. Detection of superoxide and peroxynitrite in model systems and mitochondria by the luminol analogue L-012. *Free Radic Res* 2004;38:259–269. [PubMed: 15129734]
17. Nakano M, Sugioka K, Ushijima Y, Goto T. Chemiluminescence probe with Cypridina luciferin analog, 2-methyl-6-phenyl-3,7-dihydroimidazo[1,2-a]pyrazin-3-one, for estimating the ability of human granulocytes to generate O_2^- . *Anal Biochem* 1986;159:363–369. [PubMed: 3030158]
18. Warnholtz A, Nickenig G, Schulz E, Macharzina R, Brasen JH, Skatchkov M, Heitzer T, Stasch JP, Griendling KK, Harrison DG, Bohm M, Meinertz T, Munzel T. Increased NADH-oxidase-mediated superoxide production in the early stages of atherosclerosis: evidence for involvement of the renin-angiotensin system. *Circulation* 1999;99:2027–2033. [PubMed: 10209008]
19. Kimura C, Oike M, Ito Y. Hypoxia-induced alterations in Ca^{2+} mobilization in brain microvascular endothelial cells. *Am J Physiol Heart Circ Physiol* 2000;279:H2310–H2318. [PubMed: 11045967]
20. Kimura C, Cheng W, Hisadome K, Wang YP, Koyama T, Karashima Y, Oike M, Ito Y. Superoxide anion impairs contractility in cultured aortic smooth muscle cells. *Am J Physiol Heart Circ Physiol* 2002;283:H382–H390. [PubMed: 12063312]
21. Kuwahara K, Oizumi N, Fujisawa S, Tanito M, Ohira A. Carteolol hydrochloride protects human corneal epithelial cells from UVB-induced damage in vitro. *Cornea* 2005;24:213–220. [PubMed: 15725891]
22. Oosthuizen MM, Greyling D. Hydroxyl radical generation: the effect of bicarbonate, dioxygen and buffer concentration on pH-dependent chemiluminescence. *Redox Rep* 2001;6:105–116. [PubMed: 11450981]
23. Kambayashi Y, Ogino K. Reestimation of Cypridina luciferin analogs (MCLA) as a chemiluminescence probe to detect active oxygen species—cautionary note for use of MCLA. *J Toxicol Sci* 2003;28:139–148. [PubMed: 12974606]
24. Bruker_Biospin. What is EPR?. 2006. Available at: <http://www.brukerbiospin.com/brukerepr/whatisepcontinuouswave.html>. Accessed January 9, 2007
25. Weil, JA.; Bolton, J.; Wertz, J. *Electron Paramagnetic Resonance: Elementary Theory and Practical Applications*. John Wiley and Sons; New York, NY: 1994.
26. Janzen EG. Spin trapping. *Methods Enzymol* 1984;105:188–198. [PubMed: 6328178]
27. Zhang H, Joseph J, Vasquez-Vivar J, Karoui H, Nsanzumuhire C, Martasek P, Tordo P, Kalyanaraman B. Detection of superoxide anion using an isotopically labeled nitron spin trap: potential biological applications. *FEBS Lett* 2000;473:58–62. [PubMed: 10802059]
28. Dikalova AE, Kadiiska MB, Mason RP. An in vivo ESR spin-trapping study: free radical generation in rats from formate intoxication—role of the Fenton reaction. *Proc Natl Acad Sci U S A* 2001;98:13549–13553. [PubMed: 11717423]
29. Dikalov S, Jiang J, Mason RP. Characterization of the high-resolution ESR spectra of superoxide radical adducts of 5-(diethoxyphosphoryl)-5-methyl-1-pyrroline N-oxide (DEPMPO) and 5,5-dimethyl-1-pyrroline N-oxide (DMPO). Analysis of conformational exchange. *Free Radic Res* 2005;39:825–836. [PubMed: 16036362]
30. Alegria AE, Samuni A, Mitchell JB, Riesz P, Russo A. Free radicals induced by adriamycin-sensitive and adriamycin-resistant cells: a spin-trapping study. *Biochemistry* 1989;28:8653–8658. [PubMed: 2557905]
31. Zwicker K, Dikalov S, Matuschka S, Mainka L, Hofmann M, Khramtsov V, Zimmer G. Oxygen radical generation and enzymatic properties of mitochondria in hypoxia/reoxygenation. *Arzneimittelforschung* 1998;48:629–636. [PubMed: 9689418]

32. Koppenol WH, van Buuren KJ, Butler J, Braams R. The kinetics of the reduction of cytochrome c by the superoxide anion radical. *Biochim Biophys Acta* 1976;449:157–168. [PubMed: 10982]
33. Bardelang D, Rockenbauer A, Karoui H, Finet JP, Biskupska I, Banaszak K, Tordo P. Inclusion complexes of EMPO derivatives with 2,6-di-Omethyl-beta-cyclodextrin: synthesis, NMR and EPR investigations for enhanced superoxide detection. *Org Biomol Chem* 2006;4:2874–2882. [PubMed: 16855735]
34. Dikalov S, Fink B, Skatchkov M, Bassenge E. Comparison of glyceryl trinitrate-induced with pentaerythrityl tetranitrate-induced in vivo formation of superoxide radicals: effect of vitamin C. *Free Radic Biol Med* 1999;27:170–176. [PubMed: 10443933]
35. Kuzkaya N, Weissmann N, Harrison DG, Dikalov S. Interactions of peroxynitrite, tetrahydrobiopterin, ascorbic acid, and thiols: implications for uncoupling endothelial nitric-oxide synthase. *J Biol Chem* 2003;278:22546–22554. [PubMed: 12692136]
36. Dikalov S, Skatchkov M, Fink B, Bassenge E. Quantification of superoxide radicals and peroxynitrite in vascular cells using oxidation of sterically hindered hydroxylamines and electron spin resonance. *Nitric Oxide* 1997;1:423–431. [PubMed: 9441913]
37. Seimenis I, Foster MA, Lurie DJ, Hutchison JM, Whiting PH, Payne S. The excretion mechanism of the spin label proxyl carboxylic acid (PCA) from the rat monitored by X-band ESR and PEDRI. *Magn Reson Med* 1997;37:552–558. [PubMed: 9094077]
38. Vianello F, Momo F, Scarpa M, Rigo A. Kinetics of nitroxide spin label removal in biological systems: an in vitro and in vivo ESR study. *Magn Reson Imaging* 1995;13:219–226. [PubMed: 7739363]
39. Dikalova A, Clempus R, Lassegue B, Cheng G, McCoy J, Dikalov S, San Martin A, Lyle A, Weber DS, Weiss D, Taylor WR, Schmidt HH, Owens GK, Lambeth JD, Griendling KK. Nox1 overexpression potentiates angiotensin II-induced hypertension and vascular smooth muscle hypertrophy in transgenic mice. *Circulation* 2005;112:2668–2676. [PubMed: 16230485]
40. Beckman JS, Minor RL Jr, White CW, Repine JE, Rosen GM, Freeman BA. Superoxide dismutase and catalase conjugated to polyethylene glycol increases endothelial enzyme activity and oxidant resistance. *J Biol Chem* 1988;263:6884–6892. [PubMed: 3129432]
41. Hanna IR, Hilenski LL, Dikalova A, Taniyama Y, Dikalov S, Lyle A, Quinn MT, Lassegue B, Griendling KK. Functional association of nox1 with p22phox in vascular smooth muscle cells. *Free Radic Biol Med* 2004;37:1542–1549. [PubMed: 15477006]
42. Kuzkaya N, Weissmann N, Harrison DG, Dikalov S. Interactions of peroxynitrite with uric acid in the presence of ascorbate and thiols: implications for uncoupling endothelial nitric oxide synthase. *Biochem Pharmacol* 2005;70:343–354. [PubMed: 15963955]
43. Zhao H, Kalivendi S, Zhang H, Joseph J, Nithipatikom K, Vasquez-Vivar J, Kalyanaraman B. Superoxide reacts with hydroethidine but forms a fluorescent product that is distinctly different from ethidium: potential implications in intracellular fluorescence detection of superoxide. *Free Radic Biol Med* 2003;34:1359–1368. [PubMed: 12757846]
44. Zhao H, Joseph J, Fales HM, Sokoloski EA, Levine RL, Vasquez-Vivar J, Kalyanaraman B. Detection and characterization of the product of hydroethidine and intracellular superoxide by HPLC and limitations of fluorescence. *Proc Natl Acad Sci U S A* 2005;102:5727–5732. [PubMed: 15824309]
45. Fink B, Laude K, McCann L, Doughan A, Harrison DG, Dikalov S. Detection of intracellular superoxide formation in endothelial cells and intact tissues using dihydroethidium and an HPLC-based assay. *Am J Physiol Cell Physiol* 2004;287:C895–C902. [PubMed: 15306539]
46. Miller FJ Jr, Gutterman DD, Rios CD, Heistad DD, Davidson BL. Superoxide production in vascular smooth muscle contributes to oxidative stress and impaired relaxation in atherosclerosis. *Circ Res* 1998;82:1298–1305. [PubMed: 9648726]
47. Wang H, Joseph JA. Quantifying cellular oxidative stress by dichlorofluorescein assay using microplate reader. *Free Radic Biol Med* 1999;27:612–616. [PubMed: 10490282]
48. Kooy NW, Royall JA, Ischiropoulos H. Oxidation of 2',7'-dichlorofluorescein by peroxynitrite. *Free Radic Res* 1997;27:245–254. [PubMed: 9350429]
49. Zulueta JJ, Sawhney R, Yu FS, Cote CC, Hassoun PM. Intracellular generation of reactive oxygen species in endothelial cells exposed to anoxia-reoxygenation. *Am J Physiol* 1997;272:L897–L902. [PubMed: 9176254]

50. Bass DA, Parce JW, Dechatelet LR, Szejda P, Seeds MC, Thomas M. Flow cytometric studies of oxidative product formation by neutrophils: a graded response to membrane stimulation. *J Immunol* 1983;130:1910–1917. [PubMed: 6833755]
51. Khatri JJ, Johnson C, Magid R, Lessner SM, Laude KM, Dikalov SI, Harrison DG, Sung HJ, Rong Y, Galis ZS. Vascular oxidant stress enhances progression and angiogenesis of experimental atheroma. *Circulation* 2004;109:520–525. [PubMed: 14744973]
52. Liu Y, Zhao H, Li H, Kalyanaraman B, Nicolosi AC, Gutterman DD. Mitochondrial sources of H₂O₂ generation play a key role in flow-mediated dilation in human coronary resistance arteries. *Circ Res* 2003;93:573–580. [PubMed: 12919951]
53. Seshiah PN, Weber DS, Rocic P, Valppu L, Taniyama Y, Griendling KK. Angiotensin II stimulation of NAD(P)H oxidase activity: upstream mediators. *Circ Res* 2002;91:406–413. [PubMed: 12215489]
54. Abdalla MY, Ahmad IM, Spitz DR, Schmidt WN, Britigan BE. Hepatitis C virus-core and non structural proteins lead to different effects on cellular antioxidant defenses. *J Med Virol* 2005;76:489–497. [PubMed: 15977232]
55. Marchesi E, Rota C, Fann YC, Chignell CF, Mason RP. Photoreduction of the fluorescent dye 2',7'-dichlorofluorescein: a spin trapping and direct electron spin resonance study with implications for oxidative stress measurements. *Free Radic Biol Med* 1999;26:148–161. [PubMed: 9890650]
56. Rota C, Chignell CF, Mason RP. Evidence for free radical formation during the oxidation of 2',7'-dichlorofluorescein to the fluorescent dye 2',7'-dichlorofluorescein by horseradish peroxidase: possible implications for oxidative stress measurements. *Free Radic Biol Med* 1999;27:873–881. [PubMed: 10515592]
57. Wrona M, Wardman P. Properties of the radical intermediate obtained on oxidation of 2',7'-dichlorodihydrofluorescein, a probe for oxidative stress. *Free Radic Biol Med* 2006;41:657–667. [PubMed: 16863999]
58. Rota C, Fann YC, Mason RP. Phenoxy free radical formation during the oxidation of the fluorescent dye 2',7'-dichlorofluorescein by horseradish peroxidase. Possible consequences for oxidative stress measurements. *J Biol Chem* 1999;274:28161–28168. [PubMed: 10497168]
59. Kim YM, Lim JM, Kim BC, Han S. Cu, Zn-superoxide dismutase is an intracellular catalyst for the H₂O₂-dependent oxidation of dichlorodihydrofluorescein. *Mol Cells* 2006;21:161–165. [PubMed: 16511360]
60. Zhou M, Diwu Z, Panchuk-Voloshina N, Haugland RP. A stable nonfluorescent derivative of resorufin for the fluorometric determination of trace hydrogen peroxide: applications in detecting the activity of phagocyte NADPH oxidase and other oxidases. *Anal Biochem* 1997;253:162–168. [PubMed: 9367498]
61. Weber DS, Rocic P, Mellis AM, Laude K, Lyle AN, Harrison DG, Griendling KK. Angiotensin II-induced hypertrophy is potentiated in mice overexpressing p22phox in vascular smooth muscle. *Am J Physiol Heart Circ Physiol* 2005;288:H37–H42. [PubMed: 15345488]

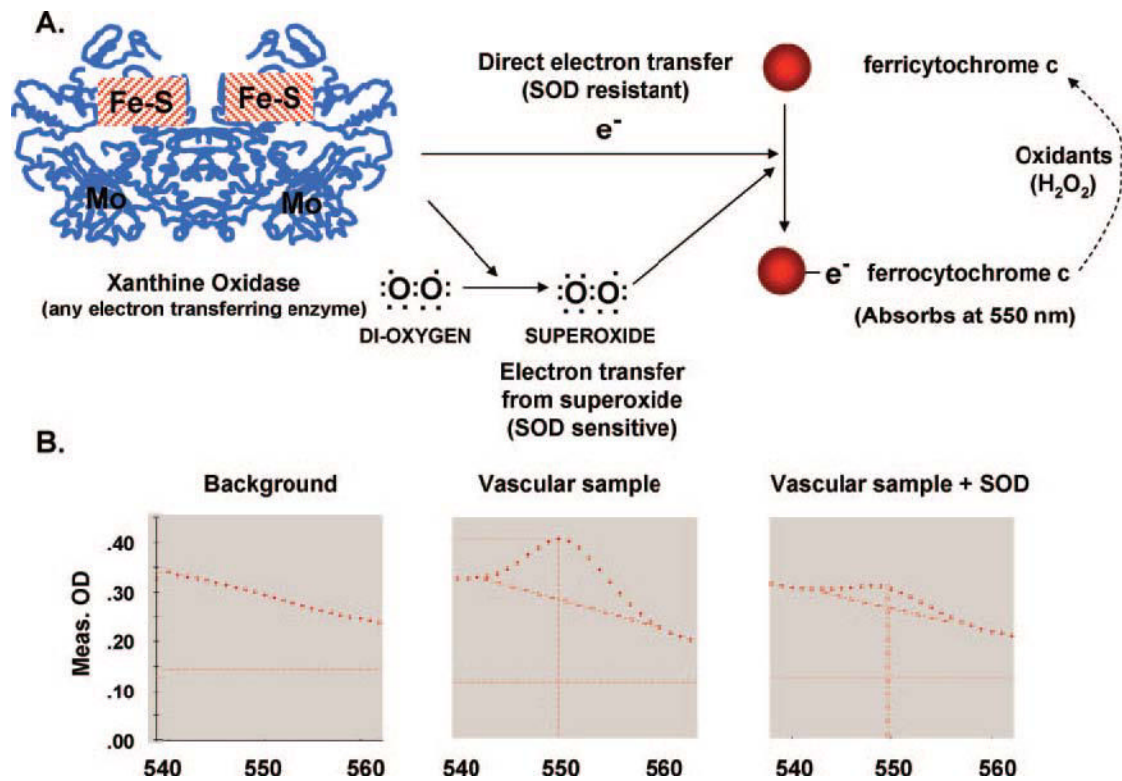


Figure 1. Detection of $O_2^{\cdot-}$ by reduction of ferricytochrome c. A, Various enzymes (shown as an example is xanthine oxidase) can generate electrons, which can directly reduce cytochrome c and also reduce oxygen leading to $O_2^{\cdot-}$ formation. Superoxide, in turn, can donate its electron to ferricytochrome c, leading to formation of ferrocyanochrome c. SOD is used to differentiate between a direct reduction of ferricytochrome c vs reduction mediated by $O_2^{\cdot-}$. B, Reduction of ferricytochrome c can be detected at 550 nm absorbance, using 540 and 560 nm as isosbestic points.

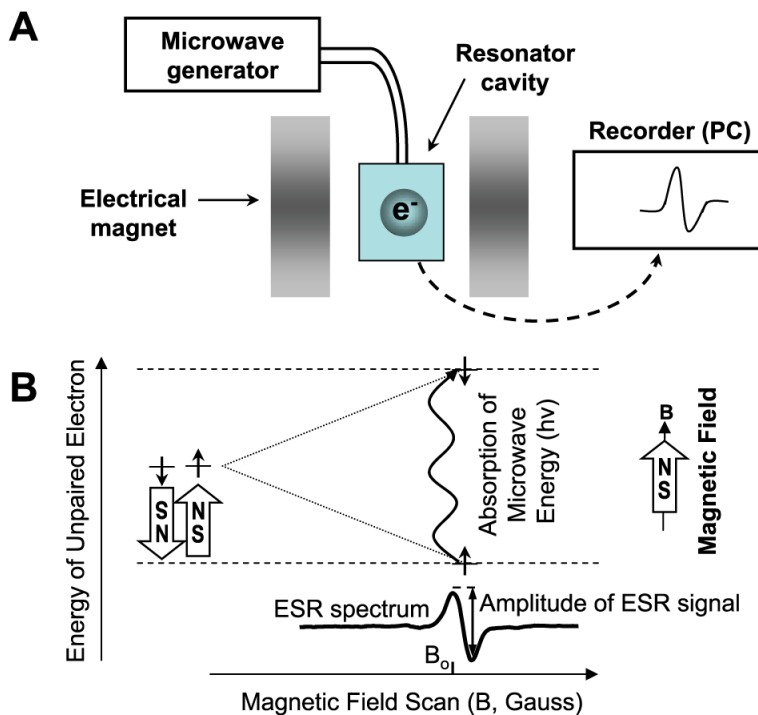


Figure 2.

The typical ESR spectrometer (A) consisting of a microwave generator, a resonator, and magnets. ESR detects the absorption of microwave energy on the transition of unpaired electrons in an applied magnetic field (B). Because the electron has a magnetic moment, it acts like a compass when it placed in a magnetic field (B). It will have a state of lowest energy when the moment of the electron is aligned with the magnetic field (\uparrow) and a state of highest energy when it aligned against the magnetic field (\downarrow). The energy of the unpaired electron, therefore, is a function of the magnetic field: $E = \pm 0.5g \mu_B B$, where “g” is the g-factor constant, “ μ_B ” is the Bohr magneton constant, and “B” is the magnetic field.

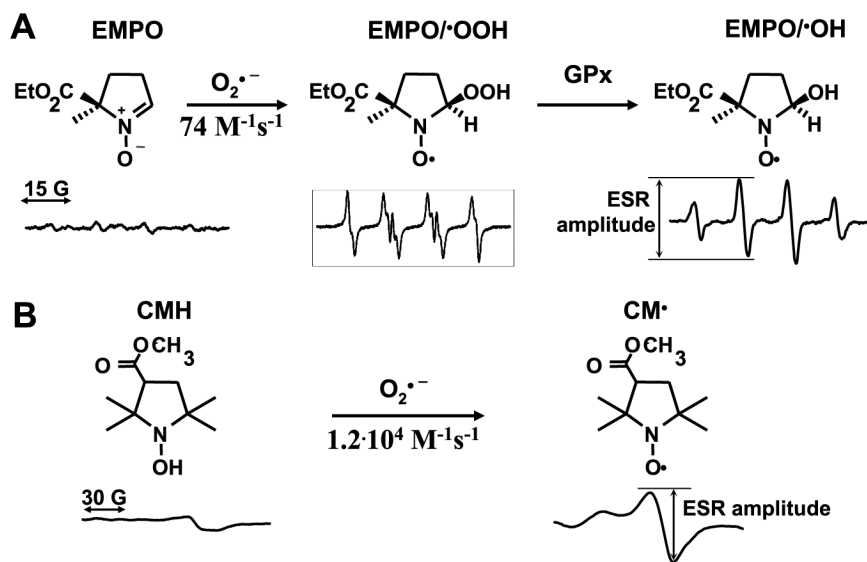


Figure 3.

Detection of superoxide by ESR. A, Spin trapping of $\text{O}_2^{\bullet-}$ by spin trap EMPO produces superoxide radical adduct EMPO/•OOH, which is decomposed by glutathione peroxidase (GPx) into OH-adduct and reduced by flavin enzymes and ascorbate into ESR silent hydroxylamine. B, The reaction of $\text{O}_2^{\bullet-}$ with spin probe CMH produces stable nitroxide radical, which can be conveniently detected in frozen samples.

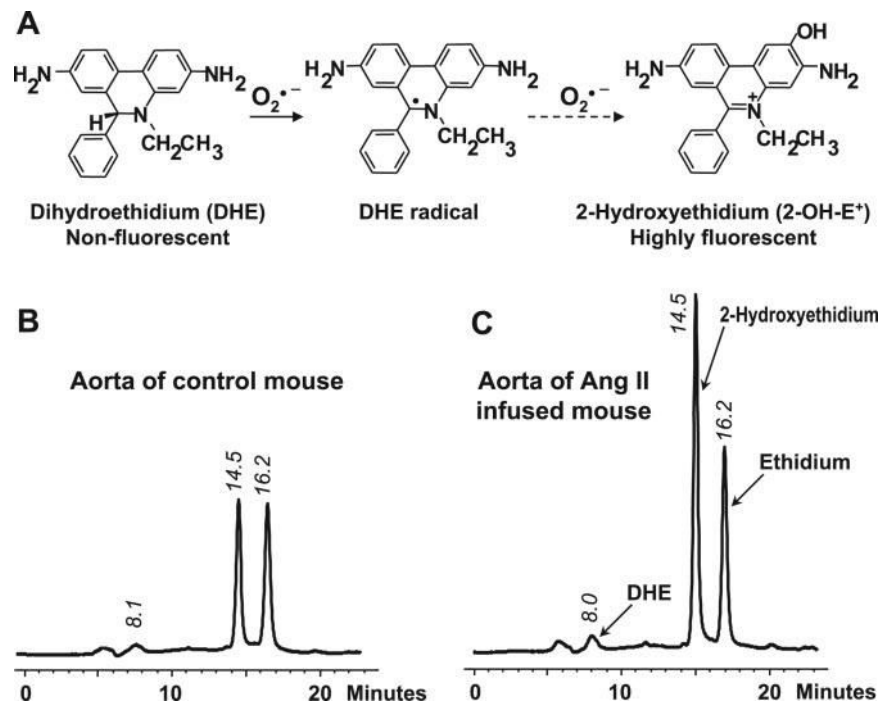


Figure 4. Detection of $O_2^{\bullet-}$ by DHE and HPLC. A, The reaction of $O_2^{\bullet-}$ with DHE produces 2-hydroxyethidium (2-HE⁺). B, HPLC tracing of untreated control mouse aortic tissue incubated with 50 $\mu\text{mol/L}$ of DHE for 30 minutes. C, HPLC tracing of angiotensin II-infused mouse (0.7 mg/kg per day for 14 days) aortic tissue incubated with 50 $\mu\text{mol/L}$ of DHE for 30 minutes. Angiotensin II significantly increases production of the $O_2^{\bullet-}$ -specific product 2-HE⁺.

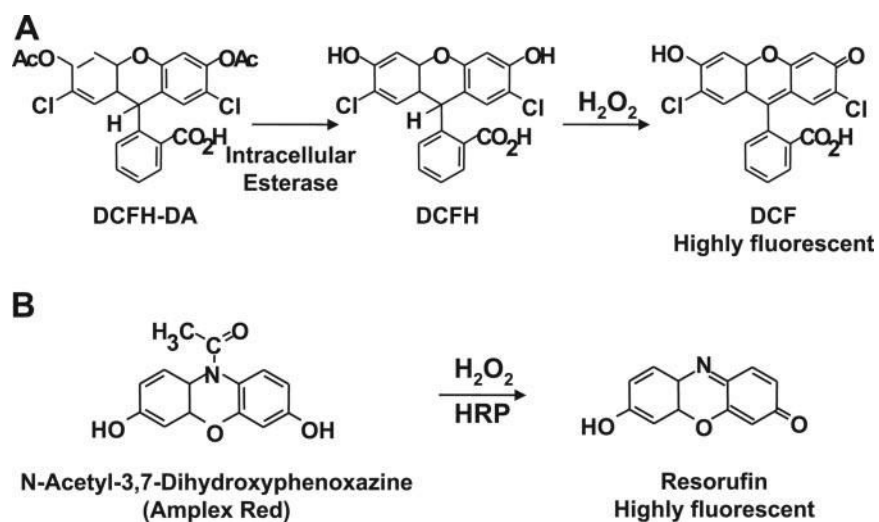


Figure 5. Detection of hydrogen peroxide with DCFH-DA and N-acetyl-3,7-dihydroxyphenoxazine (Amplex Red). A, DCFH-DA is cleaved by intracellular esterases to DCFH and oxidized by ROS to the highly fluorescent molecule DCF. B, Nonfluorescent Amplex Red is oxidized by the horseradish peroxidase and H_2O_2 to highly fluorescent resorufin.