

Receptor and G $\beta\gamma$ isoform-specific interactions with G protein-coupled receptor kinases

YEHA DAAKA*, JULIE A. PITCHER*, MARK RICHARDSON†, ROBERT H. STOFFEL*, JANET D. ROBISHAW†,
AND ROBERT J. LEFKOWITZ*‡

*Howard Hughes Medical Institute, Department of Medicine, Box 3821, Duke University Medical Center, Durham, NC 27710; and †Weis Center for Research, Geisinger Clinic, Danville, PA 17822

Contributed by Robert J. Lefkowitz, December 23, 1996

ABSTRACT The G protein-coupled receptor (GPCR) kinases (GRKs) phosphorylate and desensitize agonist-occupied GPCRs. GRK2-mediated receptor phosphorylation is preceded by the agonist-dependent membrane association of this enzyme. Previous *in vitro* studies with purified proteins have suggested that this translocation may be mediated by the recruitment of GRK2 to the plasma membrane by its interaction with the free $\beta\gamma$ subunits of heterotrimeric G proteins (G $\beta\gamma$). Here we demonstrate that this mechanism operates in intact cells and that specificity is imparted by the selective interaction of discrete pools of G $\beta\gamma$ with receptors and GRKs. Treatment of Cos-7 cells transiently overexpressing GRK2 with a β -receptor agonist promotes a 3-fold increase in plasma membrane-associated GRK2. This translocation of GRK2 is inhibited by the carboxyl terminus of GRK2, a known G $\beta\gamma$ sequesterant. Furthermore, in cells overexpressing both GRK2 and G $\beta_1\gamma_2$, activation of lysophosphatidic acid receptors leads to the rapid and transient formation of a GRK/G $\beta\gamma$ complex. That G $\beta\gamma$ specificity exists at the level of the GPCR and the GRK is indicated by the observation that a GRK2/G $\beta\gamma$ complex is formed after agonist occupancy of the lysophosphatidic acid and β -adrenergic but not thrombin receptors. In contrast to GRK2, GRK3 forms a G $\beta\gamma$ complex after stimulation of all three GPCRs. This G $\beta\gamma$ binding specificity of the GRKs is also reflected at the level of the purified proteins. Thus the GRK2 carboxyl terminus binds G β_1 and G β_2 but not G β_3 , while the GRK3 fusion protein binds all three G β isoforms. This study provides a direct demonstration of a role for G $\beta\gamma$ in mediating the agonist-stimulated translocation of GRK2 and GRK3 in an intact cellular system and demonstrates isoform specificity in the interaction of these components.

Exposure of G protein-coupled receptors (GPCRs) to an agonist often results in rapid attenuation of receptor responsiveness, a process termed desensitization. Uncoupling of the receptor from its cognate heterotrimeric G protein underlies the rapid phase of this process and is mediated, at least in part, by receptor phosphorylation (reviewed in ref. 1). Two distinct classes of serine/threonine kinases phosphorylate GPCRs; the second messenger-dependent protein kinases (cAMP-dependent protein kinase and protein kinase C) and the second messenger-independent GPCR kinases (GRKs). On the basis of structural and functional similarities, the six known members of the GRK family have been divided into three subfamilies: (i) rhodopsin kinase (GRK1), (ii) the β -adrenergic receptor (β AR) kinase subfamily (GRK2 and GRK3), and

(iii) The GRK4 subfamily (GRK4, GRK5, and GRK6) (reviewed refs. 2 and 3).

The members of the β AR kinase subfamily of GRKs (GRK2 and GRK3) exhibit an agonist-dependent association with the plasma membrane in cellular systems (4). Thus treatment of DDT₁MF-2 or S49 cells with a β -agonist leads to a rapid translocation of GRK2 activity from the cytosol to the plasma membrane (4). Agonist-induced GRK2 translocation precedes receptor phosphorylation and desensitization (4). *In vitro*, using purified components in a reconstituted system, the $\beta\gamma$ subunits of heterotrimeric G proteins (G $\beta\gamma$) are required for association of GRK2 with lipid vesicles and GRK2-mediated β AR phosphorylation (5, 6). Furthermore, a direct association between purified GRK2 and G $\beta\gamma$ has been demonstrated *in vitro* (6). On the basis of these observations a model has been proposed in which G $\beta\gamma$ -mediated membrane association of GRK2 and GRK3 is required for localizing these enzymes to their receptor substrates and thus for their efficient function. In this model agonist occupancy of a GPCR leads to the activation of heterotrimeric G proteins and the release of free G $\beta\gamma$ dimer. The G $\beta\gamma$ subsequently interacts with GRK2 and/or GRK3 and serves to target these enzymes to their membrane-incorporated receptor substrates. In this study we experimentally test the validity of this model and show it to be operative in intact cells.

Mapping the G $\beta\gamma$ binding domain of GRK2 localizes it within the carboxyl terminus of the enzyme to a region encompassing the carboxyl-terminal portion of a pleckstrin homology (PH) domain (residues Trp-543 to Ser-670 in GRK2) (7, 8). Comparison of the amino acid sequence identity between GRK2 and GRK3 reveals these proteins to be 85% identical across their entire sequence (2, 9). Restricting sequence comparison to the G $\beta\gamma$ -binding domain, however, reveals a more limited 52% identity. The somewhat diverse G $\beta\gamma$ binding regions of GRK2 and GRK3 might potentially reflect differential abilities to bind distinct combinations of G $\beta\gamma$ subunits. To date, mammalian cDNA clones encoding 6 G β (10), and 12 G γ (11) subunit proteins have been described. In this study an examination of GRK2/G $\beta\gamma$ and GRK3/G $\beta\gamma$ complex formation in a cellular system reveals important insights into the G $\beta\gamma$ binding specificities of not only the GRKs but also specific GPCRs.

EXPERIMENTAL PROCEDURES

Materials. Tissue culture supplies and Lipofectamine were purchased from GIBCO/BRL. Fetal bovine serum and gentamicin were from Life Technologies. Protein G-Sepharose and glutathione-Sepharose 4B were from Pharmacia. The cDNAs for GRK2 and GRK3 were as described (12); cDNAs

The publication costs of this article were defrayed in part by page charge payment. This article must therefore be hereby marked "advertisement" in accordance with 18 U.S.C. §1734 solely to indicate this fact.

Copyright © 1997 by THE NATIONAL ACADEMY OF SCIENCES OF THE USA
0027-8424/97/942180-6\$2.00/0
PNAS is available online at <http://www.pnas.org>.

Abbreviations: GPCR, G protein-coupled receptor; GRK, GPCR kinase; GRKct, GRK carboxyl terminus; β AR, β -adrenergic receptor; CHAPS, 3-[(3-cholamidopropyl)dimethylammonio]-1-propanesulfonic acid; GST, glutathione S-transferase; LPA, lysophosphatidic acid. ‡To whom reprint requests should be addressed.

encoding $G\beta_1$, $G\beta_2$, $G\beta_3$, and $G\gamma_2$ were provided by M. Simon (California Institute of Technology, Pasadena, CA). The glutathione *S*-transferase (GST) GRK carboxyl-terminal fusion proteins (GST-GRK2ct and GST-GRK3ct) and the GRK carboxyl-terminal peptide-encoding minigenes were constructed in our laboratory as previously described (7). $G\beta\gamma$ subunits were purified from bovine brain as described in ref. 13. Antibodies to $G\beta_{\text{common}}$ subunits were from DuPont/New England Nuclear. Monoclonal antibodies reactive with GRK2/3 and GRK5 were generated in our laboratory and have been described previously (14). Horseradish peroxidase-coupled goat anti-rabbit antibodies and chemiluminescent detection reagents were from Amersham. All other chemicals were from Sigma.

Cell Culture and Transfection. Cos-7 African green monkey kidney cells were maintained in Dulbecco's modified Eagle's medium (DMEM) supplemented with 10% fetal bovine serum and 50 μg of gentamicin per ml at 37°C in a humidified 5% $\text{CO}_2/95\%$ air atmosphere. Cells were harvested and reestablished in fresh medium 24 h before each experiment. Transient transfections were performed using Lipofectamine. Briefly, cells, at 80% confluence in 100-mm culture plates, were washed once with serum-free medium and incubated for 2 h at 37°C in 4.0 ml of serum-free medium containing 2 μg of each plasmid DNA and 6.0 μl of Lipofectamine per μg of DNA. The transfection medium was subsequently replaced with 10 ml of DMEM containing serum for an additional 24 h. Cells were starved overnight in medium containing 10 mM Hepes (pH 7.4) and 0.1% bovine serum albumin (BSA) prior to agonist stimulation.

Subcellular Fractionation. Cell monolayers were scraped in 0.25 M sucrose solution prepared in 50 mM Tris-HCl, pH 8.0/5 mM EDTA (TE) containing protease inhibitors and disrupted by 15 strokes with a hand-driven Dounce homogenizer. Intact cells and nuclei were removed by centrifugation at $300 \times g$ for 5 min. Crude membranes were obtained by centrifuging the resulting supernatant at $300,000 \times g$ for 30 min. Pellets were resuspended in TE containing 5% sucrose, layered on top of a 5–50% continuous, nonlinear sucrose gradient (15, 16), and centrifuged at $100,000 \times g$ for 100 min. Plasma membrane fractions were analyzed for their content of the GRK2 antigen by Western blotting (see below).

Immunoprecipitation. Serum-starved transfected cells were stimulated for the specified times with the indicated agonist. Cells were washed twice with ice-cold phosphate-buffered saline (PBS) and lysed in 1.0 ml of 1% CHAPS-HEDN buffer {CHAPS, 3-[(3-cholamidopropyl)dimethylammonio]-1-propanesulfonic acid; HEDN, 10 mM Hepes/1 mM EDTA/1 mM dithiothreitol/100 mM NaCl} as described (17). Lysates were cleared by centrifugation at $15,000 \times g$ for 15 min at 4°C. Supernatants were transferred to test tubes containing 15 μg of anti-GRK2/3 antibody and 50 μl of a 50% slurry of protein G-Sepharose beads. GRK2/3 immune complexes were allowed to form by rotating for 1 h at 4°C followed by three washes with CHAPS-HEDN buffer. Proteins were removed from the Sepharose beads with SDS/PAGE sample buffer, resolved by electrophoresis on 12% acrylamide gels, and transferred to nitrocellulose filters (Bio-Rad). The $G\beta$ -specific antibodies were generated using the following peptides: $G\beta_1$, $\text{NH}_2\text{-Cys-Glu-Gly-Asn-Val-Arg-Val-Ser-Arg-Glu-Leu-Ala-Gly-His-Thr-Gly-Tyr}$; $G\beta_2$, $\text{NH}_2\text{-Cys-Glu-Gly-Asn-Val-Arg-Val-Ser-Arg-Glu-Leu-Pro-Gly-His-Thr-Gly-Tyr}$; and $G\beta_3$, $\text{NH}_2\text{-Cys-Ala-Glu-Leu-Val-Ser-Gly-Leu-Glu-Val-Val-Gly-Arg}$. Antibodies were used at the following dilutions: $G\beta_{\text{common}}$, 1:5000; $G\beta_1$ and $G\beta_2$, 1:500; $G\beta_3$, 1:200; GRK2/3 and GRK5, 1:4000. Blots were developed with goat anti-rabbit IgG coupled to horseradish peroxidase and were visualized using enhanced chemiluminescence kits (ECL; Amersham).

$G\beta\gamma$ Purification. $G\beta_1\gamma_5$ and $G\beta_3\gamma_5$ were purified according to the procedure of Kozasa and Gilman (18). Briefly, Sf9

cells were infected simultaneously with recombinant baculoviruses encoding $^{6\text{His}}\alpha_{11}$, γ_5 , and either β_1 or β_3 . The cholate-soluble particulate fractions of cell lysates were loaded onto a Ni-nitrilotriacetate (NTA)-agarose column and washed with 100 ml of 300 mM NaCl and 5 mM imidazole. Bound $^{6\text{His}}\alpha_{11}\beta_1\gamma_5$ or $^{6\text{His}}\alpha_{11}\beta_3\gamma_5$ heterotrimers were activated with AlF_4^- and high Mg^{2+} to release the free $G\beta\gamma$ dimers. The $G\beta_1\gamma_5$ or $G\beta_3\gamma_5$ obtained in this way was subsequently bound to hydroxylapatite and eluted with 200 mM potassium phosphate, pH 8.0. The proteins were subsequently dialyzed into 20 mM Hepes, pH 8.0/100 mM NaCl/2 mM dithiothreitol/0.05% Lubrol-PX.

$G\beta\gamma$ Binding to GST-GRK2/3ct Proteins. Binding of purified brain $G\beta\gamma$, $G\beta_1\gamma_5$, or $G\beta_3\gamma_5$ to the carboxyl-terminal fusion peptides GRK2 and GRK3 was performed essentially as described (7). In brief, GST-GRK2ct and GST-GRK3ct, diluted in 250 μl of PBS to a final concentration of 500 nM, were coupled to glutathione-Sepharose 4B for 20 min at ambient temperature. Protein-bead complexes were washed three times in ice-cold PBS and resuspended in 250 μl of PBS containing $G\beta\gamma$ at a final concentration of 50 nM. Complexes were allowed to form for 20 min at room temperature and then washed three times with PBS. Complexed proteins were dissociated from Sepharose beads with SDS/PAGE sample buffer, resolved on 12% acrylamide gels, and transferred to nitrocellulose. Filters were blotted with $G\beta$ -specific antibodies, developed with goat anti-rabbit IgG coupled to horseradish peroxidase, and visualized using enhanced chemiluminescence kits.

RESULTS AND DISCUSSION

The agonist-dependent association of GRK2 with plasma membranes has been demonstrated in DDT₁MF-2 and S49 cells (4). In this study Cos-7 cells transiently overexpressing GRK2 were used as a model system to investigate the mechanism of this translocation phenomenon. $G\beta\gamma$ has been shown to bind to and promote membrane association of GRK2 *in vitro* (5, 6), however, a $G\beta\gamma$ /GRK2 interaction has not previously been demonstrated in an intact cellular system. That agonist-dependent translocation of GRK2, from the cytosol to the plasma membrane, occurs in Cos-7 cells is shown in Fig. 1. The GRK2 content of purified plasma membranes prepared from cells transiently overexpressing GRK2 was assessed immunologically by Western blot analysis. Treatment of cells with the β -agonist isoproterenol increases the membrane content of GRK2 approximately 3-fold (Fig. 1). To identify a potential role of $G\beta\gamma$ in mediating this agonist-dependent membrane association, cells were cotransfected with GRK2 and a GRK2 carboxyl-terminal polypeptide (GRK2ct). The GRK2ct encodes the 195 carboxyl-terminal residues of GRK2, a region that encompasses the $G\beta\gamma$ binding domain (7, 8). The GRK2ct is extensively characterized as a sequesterant of $G\beta\gamma$ in both cellular systems (19) and when expressed as a GST fusion protein *in vitro* (6, 20). Agonist treatment of cells overexpressing both GRK2 and the GRK2ct showed no significant agonist-stimulated membrane association of GRK2 (Fig. 1). The ability of the GRK2ct to block the agonist-stimulated translocation of GRK2 to the plasma membrane directly implicates a role for $G\beta\gamma$ as a mediator of this process in intact cells.

To directly demonstrate an interaction between GRK2 and $G\beta\gamma$ in a cellular system, GRK2 was immunoprecipitated from Cos-7 cells transiently overexpressing GRK2, $G\beta_1$, and $G\gamma_2$ cDNAs. GRK2 immunoprecipitates were subsequently probed immunologically for the presence of $G\beta$ (Fig. 2). In this cellular system overexpressing GRK2 and $G\beta_1\gamma_2$, $G\beta$ coimmunoprecipitated with GRK2 in the absence of agonist stimulation (Fig. 2A). Indeed, following prolonged exposure of the Western blot a GRK2/ $G\beta\gamma$ complex could be detected in the absence of $G\beta\gamma$ overexpression—i.e., a complex between

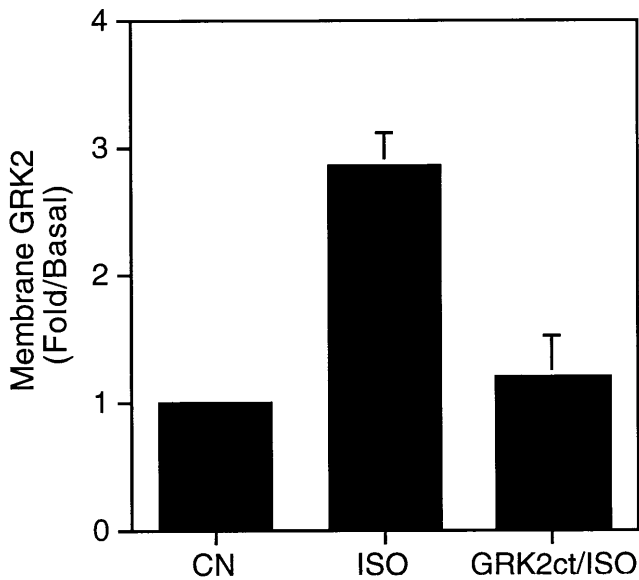


FIG. 1. Agonist-dependent association of GRK2 with the plasma membrane is inhibited by the GRK2 carboxyl terminus (GRK2ct). Cos-7 cells transiently overexpressing GRK2 (CN, ISO) or GRK2 and the GRK2ct (GRK2ct/ISO) were incubated either in medium alone (CN) or medium containing 10 μ M isoproterenol (ISO) for 5 min. Cells were harvested and plasma membranes were subjected to Western blot analysis using an anti-GRK2 monoclonal antibody. The intensity of the immunoreactive band corresponding to GRK2 was measured by laser densitometry. Data represent the mean \pm SEM. of three independent experiments expressed as fold increase over basal. The basal value represents that amount of membrane-associated GRK2 observed in the absence of agonist (ISO) treatment.

overexpressed GRK2 and endogenous $G\beta\gamma$ could be detected (data not shown). GRK5, a member of the GRK family that does not bind $G\beta\gamma$ (21), was used to demonstrate the specificity of the GRK2/ $G\beta\gamma$ interaction (Fig. 2B). No $G\beta\gamma$ was detected in the GRK5 immunoprecipitates even upon prolonged exposure of the Western blot (Fig. 2B).

The observation that GRK2 translocation to the plasma membrane, following agonist treatment, is mediated by $G\beta\gamma$ binding (Fig. 1), coupled with the finding that overexpressed GRK2 and $G\beta_1\gamma_2$ associate in a cellular system (Fig. 2), led us to examine the effect of GPCR activation on GRK2/ $G\beta\gamma$ complex formation. Cos-7 cells transiently transfected with GRK2, $G\beta_1$, and $G\gamma_2$ cDNAs were treated with lysophosphatidic acid (LPA) to activate endogenous receptors. After receptor activation GRK2 was immunoprecipitated and GRK2/ $G\beta\gamma$ complex formation was assessed by probing the GRK2 immunoprecipitates with a $G\beta$ antibody. Activation of endogenous LPA receptors induced a rapid and transient increase in GRK2/ $G\beta\gamma$ complex formation (Fig. 3 Upper). The amount of $G\beta$ associated with GRK2 was maximal 3 min after stimulation and returned to basal levels within approximately 10 min. In contrast to the coimmunoprecipitated $G\beta$, the expression level of total $G\beta$ protein remained constant over the entire time course examined (Fig. 3 Lower).

The increase in GRK2/ $G\beta\gamma$ complex formation following agonist occupancy of a specific GPCR, coupled with the observation that a complex between endogenous $G\beta\gamma$ and overexpressed GRK2 could be detected in Cos-7 cells (Fig. 1), permitted an exploration of potential $G\beta\gamma$ specificity among different receptors and between GRK2 and GRK3. GRK/ $G\beta\gamma$ complex formation was monitored after stimulation of three GPCRs endogenous to Cos-7 cells. The LPA receptor, β AR, and thrombin receptor were utilized as representative examples of, respectively, G_i -, G_s -, and G_q -coupled receptors. Overexpressed GRK2 or GRK3 was immunoprecipitated after

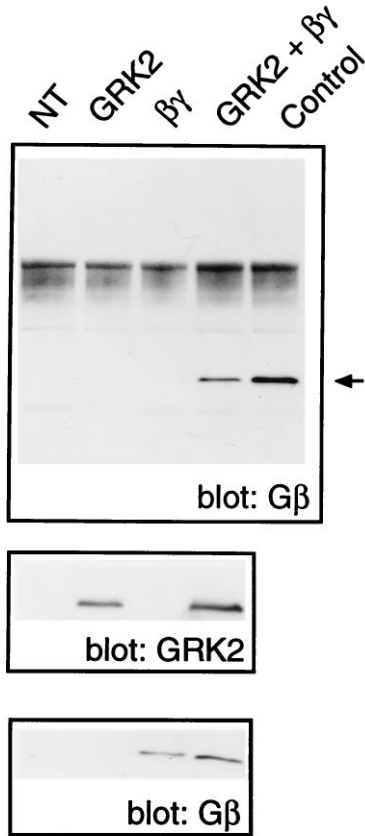
a 3-min exposure to agonist (LPA, isoproterenol, or the thrombin peptide SFLLRN). Formation of the GRK/ $G\beta\gamma$ complex was assessed by Western blot analysis using an anti- $G\beta$ antibody. In cells overexpressing GRK2, stimulation of either the LPA receptor or β AR promoted an approximately 3-fold increase in GRK2/ $G\beta\gamma$ complex formation. In contrast, stimulation of the thrombin receptor failed to promote a GRK2/ $G\beta\gamma$ interaction (Fig. 4A). Stimulation of endogenous thrombin receptors in the Cos-7 cells, however, was sufficient to activate phospholipase C as measured by inositol phosphate accumulation (data not shown). A somewhat different pattern of $G\beta\gamma$ association was observed in cells overexpressing GRK3. Activation of LPA receptor, β AR, or thrombin receptor promoted GRK3/ $G\beta\gamma$ complex formation. (Fig. 4B).

Membrane recruitment of the GRKs has been shown to be required for their efficient function (5, 6). Here we demonstrate in a cellular system that this process is mediated by interaction with $G\beta\gamma$ (Fig. 1). That agonist occupancy of the thrombin receptor promotes formation of a GRK3/ $G\beta\gamma$ complex but fails to stimulate association of GRK2 with $G\beta\gamma$ would thus suggest that GRK3 but not GRK2 can phosphorylate and thus desensitize the thrombin receptor. Indeed, GRK3 has been shown to be markedly more effective than GRK2 at inhibiting thrombin receptor signaling when coexpressed in *Xenopus oocytes* (22).

The differential ability of thrombin receptor activation to promote a GRK3/ $G\beta\gamma$ but not a GRK2/ $G\beta\gamma$ interaction provides a potential basis for receptor specificity of the GRKs. Additionally, however, this result has implications concerning the $G\beta\gamma$ specificities of both GRKs and GPCRs. Activation of LPA receptor and β AR promotes GRK/ $G\beta\gamma$ complex formation for both GRK2 and GRK3. Thrombin receptor activation, however, promotes specifically GRK3/ $G\beta\gamma$ complex formation. These results suggest (i) that activation of a particular GPCR releases a specific pool of $G\beta\gamma$ dimers and (ii) that the carboxyl-terminal $G\beta\gamma$ binding domains of GRK2 and GRK3 differentially bind specific $G\beta\gamma$ combinations. The finding that $G\beta\gamma$ isoforms display preference for particular GPCRs is consistent with previously published data collected by utilizing antisense oligonucleotides directed against distinct $G\beta$ and $G\gamma$ subunits (23, 24). In a cellular system the expression of a particular $G\beta$ or $G\gamma$ antisense oligonucleotide can be shown to selectively and specifically inhibit signal transduction mediated by a GPCR. In this way $G\beta_1\gamma_3$ and $G\beta_3\gamma_4$ have been shown to couple, respectively, the somatostatin and muscarinic acetylcholine receptors to voltage-dependent Ca^{2+} channels (23, 24). The differential coupling of distinct $G\beta\gamma$ isoforms to a particular receptor has also been proposed on the basis of *in vitro* phosphorylation studies using GRK2 (25, 26). Distinct $G\beta\gamma$ dimers have been shown to differentially enhance GRK2-mediated phosphorylation of rhodopsin and β AR (25, 26). Thus, when purified proteins are used, a GRK2/ $G\beta_2\gamma_2$ complex preferentially interacts with and phosphorylates rhodopsin, whereas a GRK2/ $G\beta_1\gamma_2$ complex preferentially phosphorylates β AR (25, 26).

The ability of thrombin receptor activation to specifically induce formation of a GRK3/ $G\beta\gamma$ complex represents the first (to our knowledge) example of specificity of $G\beta\gamma$ isoform binding between GRK2 and GRK3. In an attempt to elucidate the specific $G\beta$ isoforms binding to these two enzymes, GST fusion proteins encompassing the $G\beta\gamma$ -binding domains of GRK2 and GRK3 were incubated with a purified preparation of $G\beta\gamma$. The GST-GRK fusion proteins bound to glutathione-Sepharose were incubated with purified bovine brain $G\beta\gamma$, washed, and analyzed immunologically for bound $G\beta$ using $G\beta_1$ -, $G\beta_2$ -, or $G\beta_3$ -specific antisera. The specificity of the $G\beta$ antisera is demonstrated in Fig. 5A, using recombinant $G\beta_1$, $G\beta_2$, or $G\beta_3$ subunits expressed in and purified from Sf9 cells. Western blot analysis of purified $G\beta$ preparations

A IP: GRK2



B IP: GRK5

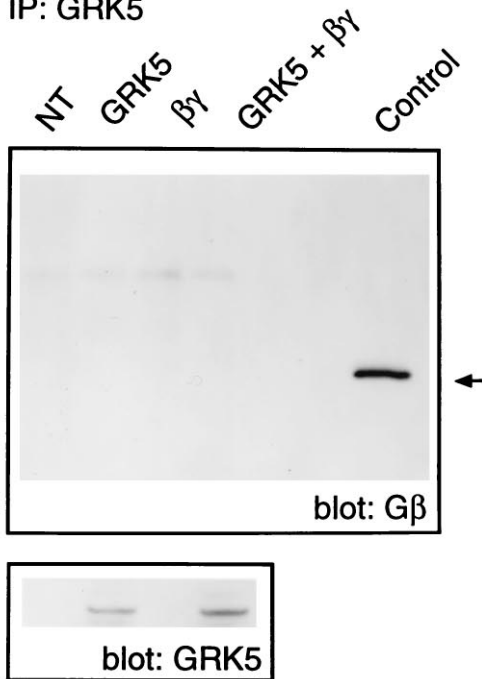


FIG. 2. G $\beta\gamma$ binds to GRK2 but not GRK5 in intact cells. (A) Cos-7 cells were transfected with pcDNA-1 vector (NT), GRK2 (GRK2), G β_1 and G γ_2 ($\beta\gamma$), or GRK2, G β_1 , and G γ_2 (GRK2 + $\beta\gamma$). Cells were solubilized in 1.0% CHAPS-HEDN, and GRK2 was immunoprecipitated using an anti-GRK2 monoclonal antibody. Immunoprecipitated proteins were subsequently subjected to Western blot analysis using an anti-G β antibody. Purified bovine brain G $\beta\gamma$ was included on the Western blot as a positive control (Control). (B) Immunoprecipitation

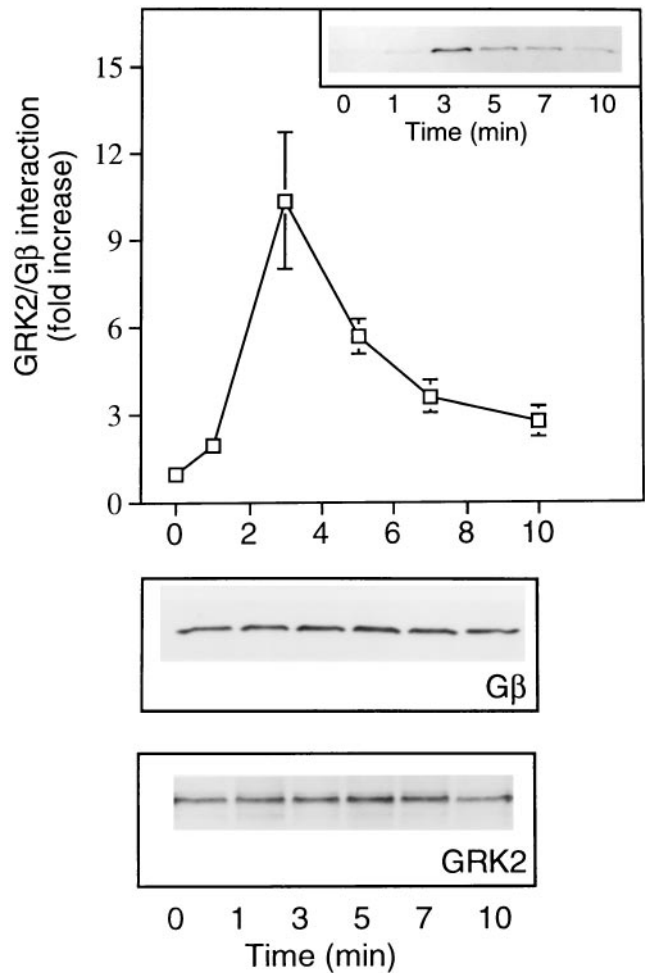


FIG. 3. (Upper) Time course of agonist-stimulated GRK2-G $\beta\gamma$ complex formation. Cos-7 cells transfected with GRK2, G β_1 , and G γ_2 were incubated overnight in serum-free media prior to LPA treatment. Following agonist treatment and at the indicated times cells were lysed and GRK2 was immunoprecipitated. The G β content of GRK2 immunoprecipitates was determined by Western blot analysis. Blots were quantified by laser densitometry. The data at each time point represent the mean \pm SEM. of three separate determinations. The data are presented as fold increase in G β content relative to an unstimulated cell control. (Inset) Representative Western blot showing G β immunoreactivity. (Lower) Blots showing G β and GRK2 immunoreactivity present in equivalent protein aliquots of cell lysate.

revealed that each G β -specific antibody recognizes only the corresponding G β subunit. Although untested, the anti-G β_3 antiserum is likely to detect G β_6 in addition to G β_3 , since the region in G β_3 used to generate the antibody is identical to that in G β_6 . Because Northern blot analysis shows G β_6 to be absent from brain (27), the G β_3 antisera can thus be used to unambiguously identify G β_3 in the purified bovine brain-derived G $\beta\gamma$.

Western blotting of the G β retained by the GST-GRKct constructs reveals distinct patterns of G $\beta\gamma$ binding. Thus, although G β_1 and G β_2 bind to both the GRK2 and GRK3

of GRK5 from cells transfected with empty vector (NT), GRK5 (GRK5), G β_1 and G γ_2 ($\beta\gamma$), or GRK5, G β_1 , and G γ_2 (GRK5 + $\beta\gamma$). The immunoprecipitations and G β Western blot analysis were performed as described for A with the exception that an anti-GRK5 antibody was used for immunoprecipitation. The lower blots in A and B show the GRK2, G β , and GRK5 contents of the Cos-7 cell lysates. The Western blots shown are representative of three independent experiments.

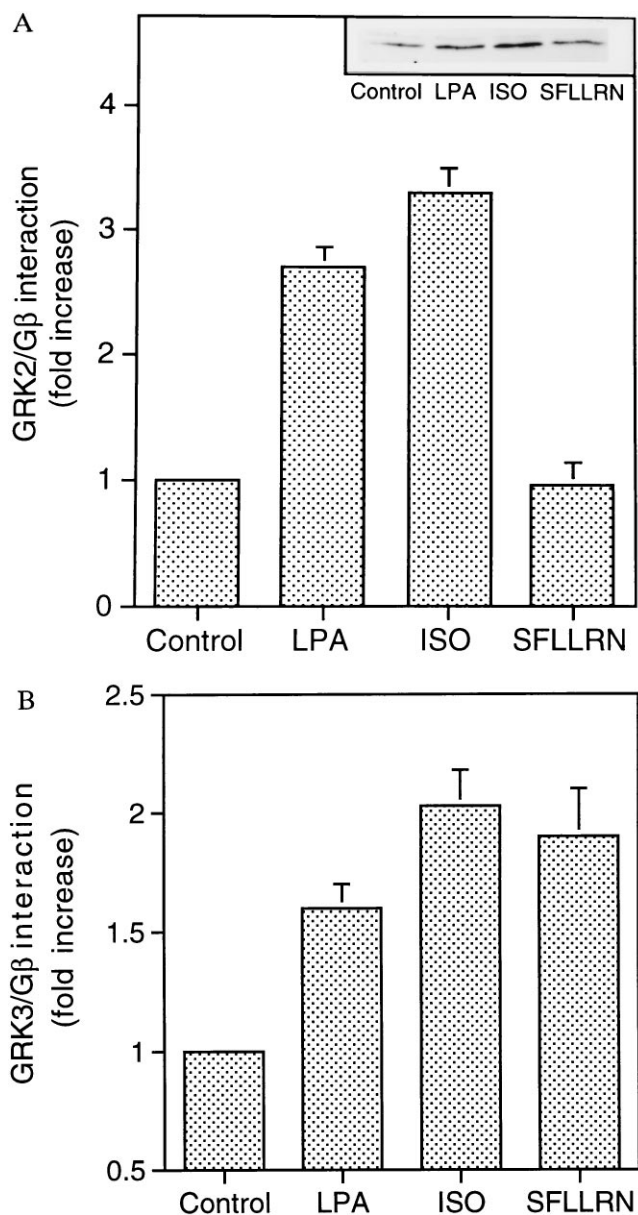


FIG. 4. Agonist-specific formation of GRK/G $\beta\gamma$ complexes. Cos-7 cells transfected with either GRK2 (A) or GRK3 (B) were starved overnight in serum-free medium prior to exposure to lysophosphatidic acid (LPA; 10 μ M), isoproterenol (ISO; 10 μ M), or the thrombin receptor agonist SFLLRN (100 μ M). GRK2 or GRK3/G $\beta\gamma$ complex formation was assessed by coimmunoprecipitation. The data represent mean \pm SEM values from four independent experiments and are expressed as fold increase over unstimulated (control) cells. (Inset) Immunoblot of a representative experiment.

carboxyl termini, G β_3 is specifically retained only by GST-GRK3 (Fig. 5B). These results directly demonstrate specificity of G $\beta\gamma$ isoform binding to GRK2 and GRK3 and suggest that G β_3 preferentially binds to GRK3. Indeed, when G $\beta_1\gamma_5$ and G $\beta_3\gamma_5$ purified from Sf9 cells are used, G $\beta_3\gamma_5$ is shown to preferentially bind to GRK3 (Fig. 5C). Thus although purified G $\beta_1\gamma_5$ binds with equal affinity to both the GRK2 and GRK3 carboxyl termini, purified G $\beta_3\gamma_5$ binds exclusively to GRK3 (Fig. 5C).

The specific interaction of GRK3 with G β_3 raises the possibility that this G β subunit is coupled to the thrombin receptor. Unfortunately, the low titer of the G β -specific antibodies prevented a direct test of this hypothesis. Thus, although Cos-7 cell endogenous G β can be detected by using

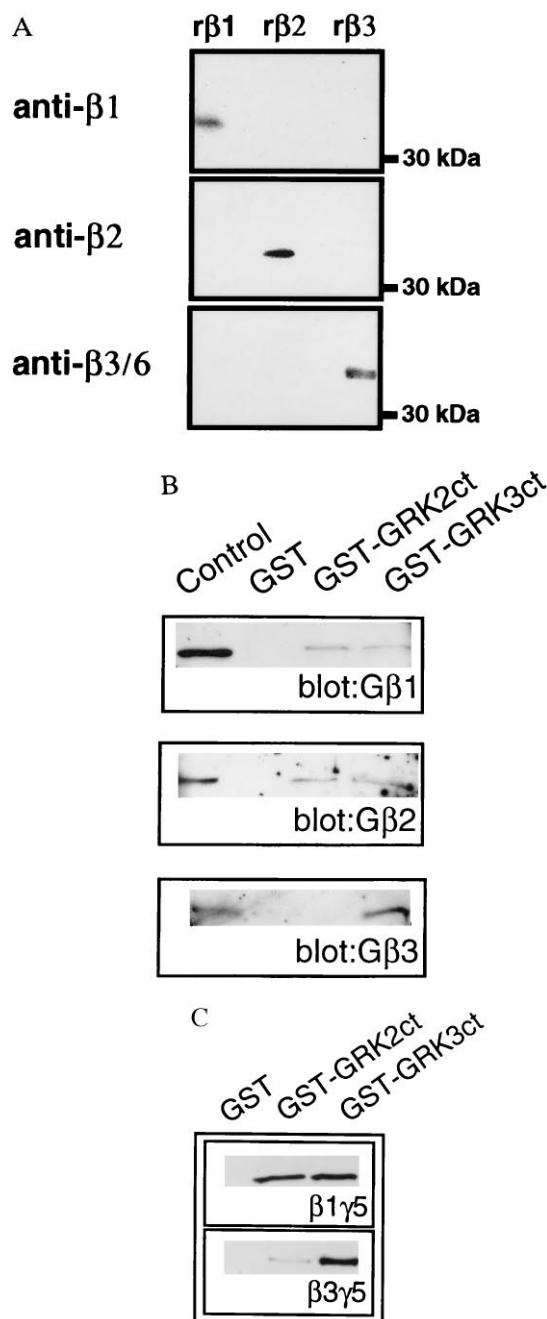


FIG. 5. G $\beta\gamma$ binding specificity of GRK2 and GRK3 carboxyl termini. (A) Recombinant G β_1 , G β_2 , or G β_3 subunits from Sf9 cells were subjected to Western blot analysis using G β -specific antibodies. (B) Purified GST, GST-GRK2ct, or GST-GRK3ct proteins were incubated with purified bovine brain G $\beta\gamma$ in the presence of glutathione-Sepharose beads. Protein-bead complexes were washed and analyzed for G β isoforms by Western blotting using the specific G β_1 , G β_2 , or G β_3 antibodies. (C) GST-GRK2ct or GST-GRK3ct proteins were incubated with purified recombinant G $\beta_1\gamma_5$ or G $\beta_3\gamma_5$ and analyzed for complex formation as previously described. Blots were developed using G β_{common} antibodies. A Western blot representative of at least three independent experiments is shown.

the G β_{common} antibody, the G β_3 -specific antisera failed to detect the G β_3 protein.

The results presented in this study provide what we believe to be the first evidence to support a role for G $\beta\gamma$ in mediating agonist-dependent membrane association of GRK2 and GRK3 in an intact cellular system. Furthermore, examination of GRK/G $\beta\gamma$ complex formation after agonist occupancy of three different GPCRs (LPA receptor, β AR, and thrombin

receptor) has extended our current conception of this model. Thus activation of specific GPCRs is postulated to lead to the release of a specific pool of G $\beta\gamma$ dimers (Fig. 4). GRK2 and GRK3 exhibit differential affinities for distinct G $\beta\gamma$ dimers (Fig. 5), thus GPCR activation could lead to the recruitment of a specific GRK isoform to the membrane. Since the membrane localization of the GRKs is required for their efficient phosphorylation of GPCRs, this model provides the basis for receptor specificity of the GRKs.

We thank Drs. R. Premont, W. Koch, and A. Gilman for providing the GRK2, GST-GRK2/3ct, and ⁶His α_{11} DNAs, respectively. This work was supported by National Institutes of Health Grants 16037 (to R.J.L.) and 39867 (to J.D.R.).

1. Freedman, N. J. & Lefkowitz, R. J. (1996) *Recent Prog. Horm. Res.* **51**, 319–353.
2. Inglese, J., Freedman, N. J., Koch, W. J. & Lefkowitz, R. J. (1993) *J. Biol. Chem.* **268**, 23735–23738.
3. Premont, R. T., Inglese, J. & Lefkowitz, R. J. (1995) *FASEB J.* **9**, 175–182.
4. Strasser, R. H., Benovic, J. L., Caron, M. G. & Lefkowitz, R. J. (1986) *Proc. Natl. Acad. Sci. USA* **83**, 6362–6366.
5. Pitcher, J. A., Inglese, J., Higgins, J. B., Arriza, J. L., Casey, P. J., Kim, C., Benovic, J. L., Kwatra, M. M., Caron, M. G. & Lefkowitz, R. J. (1992) *Science* **257**, 1264–1267.
6. Pitcher, J. A., Touhara, K., Payne, S. E. & Lefkowitz, R. J. (1995) *J. Biol. Chem.* **270**, 11707–11710.
7. Koch, W. J., Inglese, J., Stone, W. C. & Lefkowitz, R. J. (1993) *J. Biol. Chem.* **268**, 8256–8260.
8. Touhara, K., Koch, W. J., Hawes, B. E. & Lefkowitz, R. J. (1995) *J. Biol. Chem.* **270**, 17000–17005.
9. Benovic, J. L., Onorato, J. J., Arriza, J. L., Stone, W. C., Lohse, M., Jenkins, N. A., Gilbert, D. J., Copeland, N. G., Caron, M. G. & Lefkowitz, R. J. (1991) *J. Biol. Chem.* **266**, 14939–14946.
10. Watson, A. J., Aragay, A. M., Slepak, V. Z. & Simon, M. I. (1996) *J. Biol. Chem.* **271**, 28154–28160.
11. Ray, K., Kunsch, C., Bonner, L. M. & Robishaw, J. D. (1995) *J. Biol. Chem.* **270**, 21765–21771.
12. Pei, G., Tiberi, M., Caron, M. G. & Lefkowitz, R. J. (1994) *Proc. Natl. Acad. Sci. USA* **91**, 3633–3636.
13. Casey, P. J., Graziano, M. P. & Gilman, A. G. (1989) *Biochemistry* **28**, 611–616.
14. Oppermann, M., Diverse-Pierluissi, M., Drazner, M. H., Dyer, S. L., Freedman, N. J., Peppel, K. C. & Lefkowitz, R. J. (1996) *Proc. Natl. Acad. Sci. USA* **93**, 7649–7654.
15. Kassis, S. & Sullivan, M. (1986) *J. Cyclic Nucleotide Protein Phosphorylation Res.* **11**, 35–46.
16. Krueger, K. M., Daaka, Y., Pitcher, J. A. & Lefkowitz, R. J. (1997) *J. Biol. Chem.* **272**, 5–8.
17. Krapivinsky, G., Krapivinsky, L., Wickman, K. & Clapham, D. E. (1995) *J. Biol. Chem.* **270**, 29059–29062.
18. Kozasa, T. & Gilman, A. G. (1995) *J. Biol. Chem.* **270**, 1734–1741.
19. Koch, W. J., Hawes, B. E., Inglese, J., Luttrell, L. M. & Lefkowitz, R. J. (1994) *J. Biol. Chem.* **269**, 6193–6197.
20. Touhara, K., Inglese, J., Pitcher, J. A., Shaw, G. & Lefkowitz, R. J. (1994) *J. Biol. Chem.* **269**, 10217–10220.
21. Premont, R. T., Koch, W. J., Inglese, J. & Lefkowitz, R. J. (1994) *J. Biol. Chem.* **269**, 6832–6841.
22. Ishii, K., Chen, J., Ishii, M., Koch, W. J., Freedman, N. J., Lefkowitz, R. J. & Coughlin, S. R. (1994) *J. Biol. Chem.* **269**, 1125–1130.
23. Kleuss, C., Scherubl, H., Hescheler, J., Schultz, G. & Wittig, B. (1993) *Science* **259**, 832–834.
24. Kleuss, C., Scherubl, H., Hescheler, J., Schultz, G. & Wittig, B. (1992) *Nature (London)* **358**, 424–426.
25. Muller, S., Hekman, M. & Lohse, M. J. (1993) *Proc. Natl. Acad. Sci. USA* **90**, 10439–10443.
26. Muller, S., Straub, A., Schroder, S., Bauer, P. H. & Lohse, M. J. (1996) *J. Biol. Chem.* **271**, 11781–11786.
27. Ray, K. & Robishaw, J. D. (1994) *Gene* **149**, 337–340.