

The Effect of Ferredoxin_{BED} Overexpression on Benzene Dioxygenase Activity in *Pseudomonas putida* ML2

HAI-MENG TAN,† CHRISTOPHER L. JOANNOU, CHRISTOPHER E. COOPER, CLIVE S. BUTLER, RICHARD CAMMACK, AND JEREMY R. MASON*

Centre for the Study of Metals in Biology and Medicine, Division of Life Sciences, King's College London, London W8 7AH, United Kingdom

Received 4 October 1993/Accepted 20 February 1994

The benzene dioxygenase from *Pseudomonas putida* ML2 is a multicomponent complex comprising a flavoprotein reductase, a ferredoxin, and a terminal iron-sulfur protein (ISP). The catalytic activity of the isolated complex shows a nonlinear relationship with protein concentration in cell extracts, with the limiting factor for activity in vitro being ferredoxin_{BED}. The relative levels of the three components were analyzed by using ¹²⁵I-labelled antibodies, and the functional molar ratio of ISP_{BED}, ferredoxin_{BED}, and reductase_{BED} was shown to be 1:0.9:0.8, respectively. The concentration of ferredoxin_{BED} was confirmed by quantitative electron paramagnetic resonance spectroscopy of the 2Fe-2S centers in ferredoxin_{BED} and ISP_{BED} of whole cells. These results demonstrate that the ferredoxin_{BED} component is a limiting factor in dioxygenase activity in vitro. To determine if it is a limiting factor in vivo, a plasmid (pJRM606) overproducing ferredoxin_{BED} was introduced into *P. putida* ML2. The benzene dioxygenase activity of this strain, measured in cell extracts, was fivefold greater than in the wild type, and the activity was linear with protein concentration in cell extracts above 2 mg/ml. Western blotting (immunoblotting) and electron paramagnetic resonance spectroscopic analysis confirmed an elevated level of ferredoxin_{BED} protein and active redox centers in the recombinant strain. However, in these cells, the increased level of ferredoxin_{BED} had no effect on the overall rate of benzene oxidation by whole cells. Thus, we conclude that ferredoxin_{BED} is not limiting at the high intracellular concentration (0.48 mM) found in cells.

Many microorganisms initiate the oxidation of aromatic compounds through the action of dioxygenases (12). Dioxygenases that oxidize such compounds as biphenyl, anthracene, phenanthrene, naphthalene, toluene, and benzene have been reported in the literature. As a class, these enzymes are important because of their ability to introduce molecular oxygen into the aromatic nucleus to form *cis*-dihydrodiols. One of the best-studied dioxygenases is benzene dioxygenase (EC 1.14.12.3) from *Pseudomonas putida* ML2 (NCIB 12190), which incorporates two electrons and both atoms of dioxygen into benzene to form *cis*-benzene dihydrodiol (1). The enzyme consists of a flavoprotein reductase (reductase_{BED}) and a ferredoxin (ferredoxin_{BED}) which transfer electrons from NADH to an iron-sulfur protein that functions as the terminal dioxygenase (ISP_{BED}) (5, 10). The latter consists of two dissimilar subunits arranged in an $\alpha_2\beta_2$ configuration (26). Both the ferredoxin_{BED} and ISP_{BED} components contain 2Fe-2S clusters, which have been examined by Mössbauer and electron paramagnetic resonance (EPR) spectroscopy (9, 11) and which from sequence information (15, 18, 24) are probably of the Rieske type, with histidine as well as cysteine ligands (17). Although we have some understanding of the function of each individual component, little is known about the interactions involved among the three components in the overall reaction. As with many other multicomponent oxygenases, attempts to determine a meaningful specific activity for the enzyme have proved difficult because of a marked nonlinearity

of activity in vitro with respect to protein concentration (16). Purification of the enzyme results in separation of any noncovalent complex into its individual components. Kinetic evidence for such systems suggests that the ferredoxin_{BED} component functions as a mobile electron shuttle in which ferredoxin_{BED} first binds to the reductase_{BED} and accepts an electron from NADH-reduced reductase_{BED}. Reduced ferredoxin_{BED}, which dissociates from the complex, then binds to oxidized ISP_{BED} to transfer its electron. Finally, oxidized ferredoxin_{BED} dissociates from reduced ISP_{BED}, and the cycle continues. Such mechanisms have been demonstrated for other multicomponent systems such as putidaredoxin and P-450_{cam} from *P. putida* (25) and mitochondrial cytochrome P-450_{cc} (13).

In this study, we examined the role of ferredoxin_{BED} as a limiting factor in the activity of benzene dioxygenase. The effect of increasing the concentration of ferredoxin_{BED} was determined both in vitro by supplementation with purified protein and in vivo by expression of additional copies of the gene encoding the ferredoxin (*bedB*). Evidence is presented that although dioxygenase activity can be stimulated in vitro by enhanced levels of ferredoxin_{BED}, it does not limit activity in vivo. We intend to show that absolute concentration in addition to relative concentration is important when one is dealing with complex enzymes such as dioxygenases.

MATERIALS AND METHODS

Bacterial strains, plasmids, and media. Bacterial strains and plasmids used in this study are listed in Table 1. *P. putida* strains were grown with benzene as the sole carbon source at 30°C (26); *Escherichia coli* strains were grown on LB medium in the presence of the appropriate antibiotics at 37°C. Strains containing plasmids pJRM606, pJRM754, and pRK2013 were

* Corresponding author. Mailing address: Centre for the Study of Metals in Biology and Medicine, Division of Life Sciences, King's College London, Campden Hill Road, London W8 7AH, United Kingdom. Phone: +44 71 333 4421.

† Present address: Department of Microbiology, National University of Singapore, Singapore 0511.

TABLE 1. Characteristics of the bacterial strains and plasmids used in this study

Strain or plasmid	Relevant characteristics	Reference or source
Bacterial strains		
<i>P. putida</i> ML2 (NCIB 12190)	Bed ⁺ prototroph bearing plasmid pHMT112	23
<i>E. coli</i> DH5 α	F ⁻ ϕ 80dlacZ Δ M15 Δ (lacZYA argF)U169 <i>deoR recA1 endA1 hsdR17</i> (r _K ⁻ m _K ⁺) <i>SupE44</i> , λ ⁻ <i>thi-1 gyrA96 relA1</i>	Bethesda Research Laboratories
Plasmids		
pKK223-3	Ap ^r , expression vector	Pharmacia
pJRD215	Km ^r , broad-host-range cosmid vector	6
pRK2013	Km ^r	8
pJRM754	pJRD215 with <i>tac</i> promoter	This work ^b
pHMT181	pUC18 with 4.5-kb <i>Pst</i> I insert encoding <i>bedC1C2B</i> and truncated <i>bedA</i>	23
pJRM506	<i>bedB</i> gene cloned into pKK223-3	This work ^b
pJRM606	<i>bedB</i> gene cloned into pJRM754	This work ^b

^a Bed⁺ indicates the ability to grow on benzene as the sole carbon and energy source.

^b For details of construction, see Materials and Methods.

grown in the presence of kanamycin (50 μ g/ml). Strains containing plasmids pJRM506 and pHMT181 were grown in the presence of ampicillin (100 μ g/ml).

Subcloning and transformation of the *bedB* gene. The ferredoxin_{BED} *bedB* gene was isolated from plasmid pHMT181, containing genes *bedC1C2BA* (23, 24). The *bedB* gene was excised from pHMT181 by restriction with the enzymes *Dde*I and *Cfo*I and gel purified by using glass milk (GeneClean; BIO 101 Inc., La Jolla, Calif.), and the resultant 0.5-kb fragment was blunt ended with T4 DNA polymerase. *Eco*RI linkers (Pharmacia) were added, restricted with *Eco*RI, and ligated into the multiple cloning site of the vector pKK223-3 (Pharmacia) previously restricted with *Eco*RI and treated with HK phosphatase (Epicentre Technologies, Madison, Wis.). To express the *bedB* gene in *P. putida*, it was subcloned into the broad-host-range vector pJRD 215 (6). The *tac:bedB* gene construct was isolated from plasmid pJRM506 by *Bam*HI digestion, and the gel-purified 668-bp fragment was ligated into the multiple cloning site of plasmid pJRD215, previously restricted with *Bam*HI and treated with phosphatase. The recombinant plasmid in *E. coli* containing the *bedB* gene under the control of the *tac* promoter (pJRM606) was introduced into *P. putida* ML2 by triparental mating (7). Selection on minimal medium plates with benzene as the carbon source and kanamycin as the selecting antibiotic gave rise to the recombinant strain *P. putida* ML2(pJRM606). The control plasmid pJRM754 was constructed by subcloning the *tac* promoter alone into pJRD215 in a similar manner.

Preparation of cell extracts. Cells used for the preparation of cell extracts were disrupted by sonication as described previously (26) except that cells were resuspended in 1 ml of buffer per g (wet weight) of cells.

Protein determination. Protein concentration was determined by the modified Lowry method of Hess et al. (14), with bovine serum albumin (BSA) as the standard.

Assay of benzene dioxygenase activity. Benzene dioxygenase activity in cell extracts was measured polarographically, using a Clark-type oxygen electrode at 30°C in a total volume of 1 ml by the method of Geary et al. (10). Whole-cell benzene dioxygenase activity was also measured by using an oxygen electrode; cells with an optical density at 660 nm of 0.1 to 0.6 were washed in 50 mM phosphate buffer (pH 7.2). One milliliter was allowed to equilibrate to 30°C for 5 min, and the assay was initiated by the addition of 50 μ l of benzene-saturated water (1 μ l of benzene in 1 ml of water). Activity was expressed as micromoles of O₂ consumed per minute per milligram (dry weight) of protein.

Purification of ferredoxin_{BED}, ISP_{BED}, and reductase_{BED}. The components of benzene dioxygenase, reductase_{BED}, ferredoxin_{BED}, and ISP_{BED}, were purified as described by Geary et al. (10).

Western blotting (immunoblotting) and quantification of Western blots by using ¹²⁵I-labelled antibodies. Proteins were resolved by sodium dodecyl sulfate-polyacrylamide gel electrophoresis (SDS-PAGE), transferred to nitrocellulose, and probed with antibodies raised to the purified benzene dioxygenase subunits as described by Zamanian and Mason (26) and Geary et al. (10). Quantitation of the Western blots and iodination of antibodies were performed as described by Geary et al. (10).

EPR spectroscopy. EPR measurements were recorded on a Bruker ESP300 spectrometer fitted with an Oxford Instruments ESR900 liquid helium flow cryostat. All samples were reduced by the addition of 4 mM sodium dithionite after a freeze-thaw cycle, and interfering manganese signals in the whole-cell sample were broadened by the addition of 5 mM EDTA. Spectra were baseline corrected by subtraction of a cavity spectrum run under identical conditions.

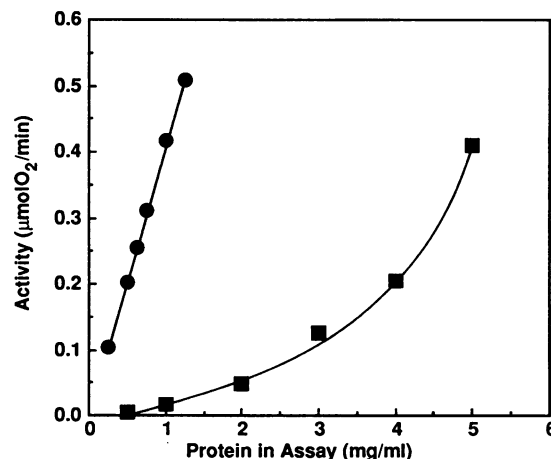


FIG. 1. Benzene dioxygenase activity in cell extracts and whole cells of *P. putida* ML2. The activity of benzene dioxygenase in whole cells (●) and cell extracts (■) was estimated with increasing amounts of biomass and extract protein as described in Materials and Methods. Values are means of at least four replicates with a standard error of <5%.

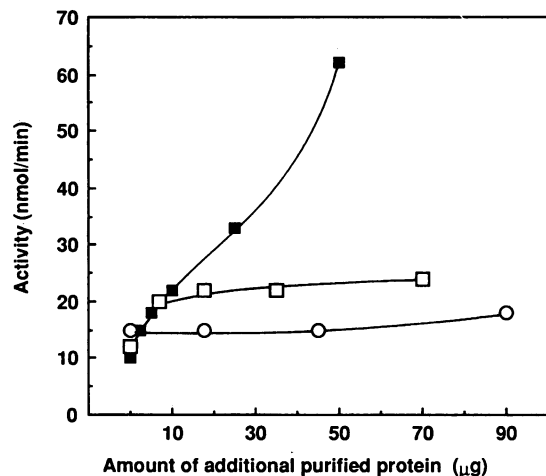


FIG. 2. Effect on benzene dioxygenase activity of adding pure subunits of ferredoxin_{BED}, ISP_{BED}, and reductase_{BED}. The purified proteins ferredoxin_{BED} (■), reductase_{BED} (□), and ISP_{BED} (○) at given concentrations were added to 1 mg of cell extract, incubated for 5 min at 30°C, and assayed for benzene dioxygenase activity.

Identification of the signals compared with pure ISP_{BED} and ferredoxin_{BED} in whole cells was performed as described by Cooper et al. (3). Cells were washed and concentrated by centrifugation and resuspended in EPR tubes at a final concentration of 2×10^{11} cells per ml. The absolute number of spins in the samples was determined by estimating how much of the pure protein spectrum had to be subtracted from the whole-cell spectrum to reduce the respective signal to zero. The number of spins in the pure ISP_{BED} and ferredoxin_{BED} spectra were estimated by measurement under nonsaturating conditions and comparing the double-integrated intensities against a CuII-EDTA standard.

RESULTS

Specific activity of benzene dioxygenase. The activity of the enzyme benzene dioxygenase in whole cells and cell extracts was measured polarographically from the rate of benzene-dependent oxygen uptake. In whole cells, the activity was found to increase linearly with respect to biomass. However, with cell extracts, the activity showed a marked nonlinearity, such that a 5-fold increase in protein concentration (1 to 5 mg/ml) resulted in a 27-fold increase in activity (Fig. 1). Such kinetics are characteristic of multicomponent enzyme systems in which the dilution effect upon cell disruption causes a pronounced decrease in activity.

We performed assays in which the concentration of cell extract was fixed at 1 mg/ml and increasing amounts of the three purified components (reductase_{BED}, ferredoxin_{BED}, and ISP_{BED}) were added separately to the assays (Fig. 2). Addition of ISP_{BED} had no significant effect on enzyme activity, but stimulation was observed with both reductase_{BED} and ferredoxin_{BED}. Addition of reductase_{BED} caused a twofold increase in activity which saturated above 20 µg of additional purified component per ml. This stimulation was even more pronounced with the addition of ferredoxin_{BED}, with activity continuing to increase up to the maximum amount of ferredoxin_{BED} added. No stimulation in activity was observed upon addition of BSA, heat-inactivated cell extract, or cell extract prepared from a strain of *P. putida* lacking benzene dioxygenase (data not shown).

Relative concentrations of subunits. To determine the relative amounts of the three components in cells of *P. putida* ML2, cell extracts of benzene-grown cells were quantitatively analyzed by Western blotting, using ¹²⁵I-labelled antibodies raised to the purified components of benzene dioxygenase. Preliminary experiments were performed to estimate the recovery of the three components in cell extracts. In the case of ferredoxin_{BED} and ISP_{BED}, greater than 95% of material was recovered in the soluble fraction, but for reductase_{BED}, 20% was found to be membrane associated (data not shown). The relative amounts of the three components present in the soluble cell extract are shown in Table 2. It is clear from these data that the molar ratio of reductase_{BED} to ferredoxin_{BED} to terminal oxygenase (ISP_{BED}) is approximately 0.64:0.92:1.00. As stated above, the low figure for reductase_{BED} is probably due to only 80% of this component being recovered in the soluble fraction, which would give a corrected ratio of 0.8:0.9:1.

Relative amounts of iron-sulfur clusters. Western blotting gives an estimate of the amounts of the three components but gives no information about their relative activities in whole cells. As an approach to answering this question, EPR spectroscopy was performed on whole cells to estimate quantitatively the iron-sulfur clusters in ferredoxin_{BED} and ISP_{BED}. The ratio of iron-sulfur clusters in the cells was estimated by subtracting the pure protein spectrum until there was a flat baseline. This is a relatively stringent test, since any changes in the linewidth of the spectrum will cause the appearance of second-derivative features in the difference spectrum. The fact that an almost flat baseline was obtained after subtraction indicates that the EPR spectra of the Rieske-type 2Fe-2S clusters in ferredoxin_{BED} and ISP_{BED} are similar to those in the purified proteins. The relative concentrations of active clusters present in the two iron-sulfur proteins are shown in Table 2. From these data, it is possible to determine the intracellular concentrations of the two components to be 1.3

TABLE 2. Relative concentrations of ferredoxin_{BED}, reductase_{BED}, and ISP_{BED} in cell extract and whole cells of *P. putida* ML2^a

Subunit	Immunological assay in cell extract			Fe-S centers in whole cells		
	Concn (µg/mg of protein)	Extract concn (M)	Molar ratio	µM spin	Intracellular concn (M)	Molar ratio
ISP _{BED}	131.6 ± 19	7.8×10^{-5}	1.00	157 ± 8	1.3×10^{-3}	1.00
Ferredoxin _{BED}	14.2 ± 3	3.6×10^{-5}	0.92	57 ± 3	4.8×10^{-4}	0.75
Reductase _{BED}	72.5 ± 12	5.0×10^{-5}	0.64			

^a The amount of each subunit in the cell extract (30 mg of protein per ml) was quantified by Western blotting using ¹²⁵I-labelled antibodies to each of the subunits (8). Values are means ± standard errors of the means with three replicate determinations. Estimation of active iron-sulfur clusters in whole cells for ferredoxin_{BED} and ISP_{BED} was carried out by using EPR spectroscopy and quantified by comparing the double-integrated intensities against a CuII-EDTA standard. The intracellular concentration of enzyme is calculated on the basis of an intracellular volume of 6×10^{-16} liters per cell (20). The molar ratio estimation is based on a ferredoxin_{BED} monomer (M_r of 11,939) and dimers of the ISP_{BED} α subunit (dimer M_r of 102,210) and reductase_{BED} (dimer M_r of 87,168).

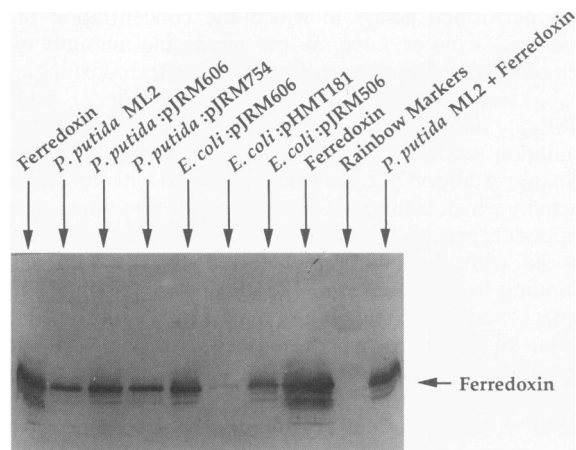


FIG. 3. Western blotting to determine expression of the cloned *bedB* gene. Cell extract (10 µg) prepared from cells used in the cloning procedure was resolved by SDS-PAGE, electroblotted onto nitrocellulose, and probed with antibodies raised against ferredoxin_{BED}. Amounts of pure ferredoxin_{BED} protein loaded in tracks labeled "Ferredoxin" were 0.4 and 1 µg, respectively. The method was that described by Tan and Mason (23).

and 0.48 mM for ISP_{BED} and ferredoxin_{BED}, respectively. These data indicate that there is significantly less active ferredoxin_{BED} than ISP_{BED} in the cells; however, since the ISP_{BED} α subunit exists as a dimer, the ratio of ISP_{BED}α₂ to ferredoxin_{BED} is estimated to be 1:0.75.

Effect of increasing the concentration of ferredoxin_{BED} in vivo. The gene encoding benzene dioxygenase ferredoxin_{BED} (*bedB*) was subcloned first into the vector pKK223-3 to place the gene under the control of the *tac* promoter (pJRM506). After confirming the correct orientation of the *bedB* gene by restriction with endonucleases, we subcloned the gene and the attached *tac* promoter into the broad-host-range vector pJRD215 to form a plasmid designated pJRM606. This plasmid was then transferred into *P. putida* ML2 by triparental mating. Cell extracts were prepared from both *E. coli* and *P. putida* strains containing these constructs, and the expression of ferredoxin_{BED} was analyzed by Western blotting. It is evident from Fig. 3 that expression in *E. coli* was significantly enhanced when the *bedB* gene was placed under the control of the *tac* promoter, rather than its natural *Pseudomonas* promoter, in both pKK223-3 (pJRM506) and pJRD215 (pJRM606). When the latter plasmid was transferred into *P. putida* ML2, there was a significant enhancement in the amount of immunodetectable ferredoxin_{BED} (a two- to three-fold enhancement, as judged by comparison of known amounts of purified ferredoxin_{BED} with cell extracts). EPR spectroscopy of the cells showed that the addition of the cloned ferredoxin_{BED} gene (pJRM606) resulted in an increase in the peak associated with the 2Fe-2S clusters of ferredoxin_{BED} relative to the ISP_{BED} (Fig. 4, spectrum c). Cloning of the promoter sequence alone (pJRM754) did not increase the ratio relative to the wild-type cells (Fig. 4, spectra a and b). The additional feature at $g = 1.92$ in the difference spectrum (Fig. 4, spectrum c minus spectrum b) is from an endogenous iron-sulfur protein in the host cells, probably succinate dehydrogenase (4), which is differentially expressed in the recombinant strain. Quantification of these data indicates expression of ferredoxin_{BED} in the strain containing plasmid pJRM606 is enhanced twofold (Table 3), resulting in a shift of the molar ratio of ISP_{BED}α₂ to ferredoxin_{BED} from 1:0.75 to 1:1.75.

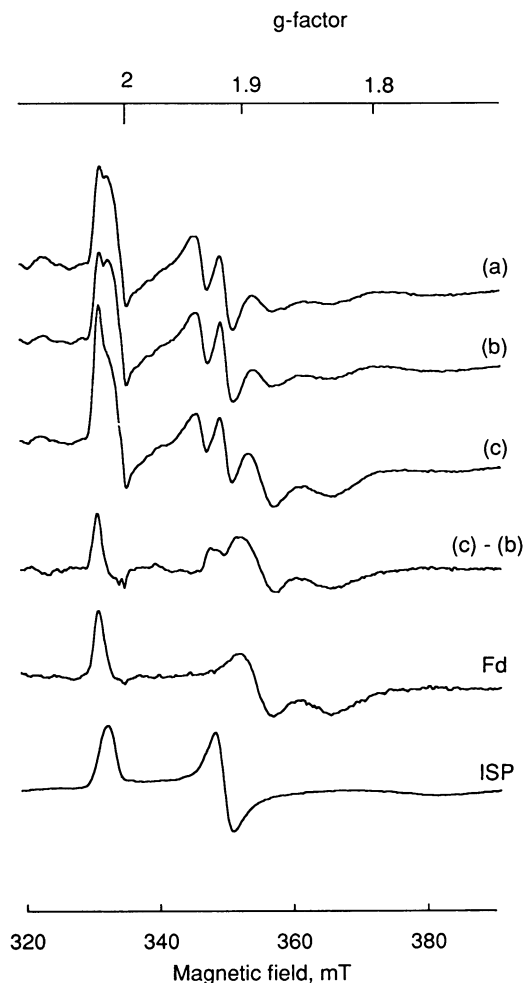


FIG. 4. EPR spectra of *P. putida* ML2 cells in the presence and absence of cloned ferredoxin_{BED}. a, *P. putida* ML2 cells (10.8 mg of protein per ml); b, *P. putida* ML2(pJRM754) (8.8 mg of protein per ml); c, *P. putida* ML2(pJRM606) (9.4 mg of protein per ml). Cells were grown in minimal medium liquid cultures with benzene as the sole carbon source, harvested at $10,000 \times g$ (10 min), resuspended in 200 ml of 50 mM phosphate buffer (pH 7.2), and prepared for EPR as described in Materials and Methods. EPR conditions were as follows: temperature, 30 K; microwave power, 2 mW; scan rate 1.2 mT/s; receiver gain, 1.6×10^4 ; microwave frequency, 9.35 GHz; modulation amplitude, 0.5 mT. The calculated difference spectrum c - b is corrected for differences in protein concentration and amplified 1.5 times relative to the original spectra. Spectra of dithionite-reduced ferredoxin and ISP are included for comparison.

To determine the effect of this increased expression of ferredoxin_{BED} on dioxygenase activity, cell extracts were prepared and the enzyme was assayed polarographically in the presence of increasing amounts of extract. Figure 5 clearly shows that activity is significantly enhanced in *P. putida* ML2(pJRM606) compared with the wild-type strain and that above 2 mg/ml of extract in the assay, the enzyme achieves a maximum specific activity of 108 nmol/min/mg. No such effect, however, was observed in whole cells. The substrate stimulated rate of oxygen uptake with washed cells of *P. putida* ML2 was determined to be 312 ± 12 nmol/min/mg (three replicate determinations), and this showed no significant stimulation in the strain expressing the higher level of ferredoxin_{BED} [*P.*

TABLE 3. Amounts of iron-sulfur centers in *P. putida* ML2 cells in the presence and absence of cloned ferredoxin

<i>P. putida</i> strain	Mean amt of dioxygenase component (μM spins) \pm SEM ($n = 3$)		Ratio, $\text{ISP}_{\text{BED}\alpha_2}/\text{ferredoxin}_{\text{BED}}$
	ISP_{BED}	$\text{ferredoxin}_{\text{BED}}$	
ML2	157 ± 8	57 ± 3	1:0.75
ML2(pJRM754)	157 ± 7	57 ± 2	1:0.75
ML2(pJRM606)	157 ± 8	143 ± 7	1:1.75

putida ML2(pJRM606); 328 ± 12 nmol/min/mg]. The value for *P. putida* ML2(pJRM754) was 302 ± 12 nmol/min/mg.

DISCUSSION

In this work, we have demonstrated the overproduction of a component of benzene dioxygenase by the use of a broad-host-range expression vector in *P. putida* ML2. The relative amounts of the protein components have been determined by immunological assay. It has also been demonstrated that the iron-sulfur clusters of the dioxygenase system may be detected quantitatively in whole cells by EPR spectroscopy.

The activity of benzene dioxygenase in cell extracts of *P. putida* ML2 was found to be nonlinear with respect to protein concentration and was stimulated markedly by addition of purified ferredoxin. We attempted, therefore, to determine the amount of the benzene dioxygenase components in whole cells of *P. putida*. The protein concentrations of the three components were estimated using ^{125}I -labelled antibodies, and EPR was used to detect the reduced iron-sulfur clusters in ISP_{BED} and $\text{ferredoxin}_{\text{BED}}$. Protein estimation indicated a molar excess of ISP_{BED} such that the $\text{ISP}_{\text{BED}}\alpha$ subunit/ $\text{ferredoxin}_{\text{BED}}$ /reductase $_{\text{BED}}$ ratio was 1:0.45:0.8. Thus, the amount of $\text{ferredoxin}_{\text{BED}}$ was approximately half that of the other components despite all of the subunits being encoded on a single operon and presumably giving rise to a single mRNA transcript. This may be explained by differences in the efficiency of translation initiation. To this end, it is significant that sequence analysis shows that the putative Shine-Dalgarno sequence (AGTGA) preceding the *bedC1* and *bedA* genes encoding the $\text{ISP}_{\text{BED}}\alpha$ and reductase $_{\text{BED}}$ subunits, respectively, differs from that upstream of the *bedB* ferredoxin gene (AGGAG) (24). Although the molar ratio of $\text{ferredoxin}_{\text{BED}}$ to $\text{ISP}_{\text{BED}}\alpha$ and reductase $_{\text{BED}}$ monomer differs substantially, this may not reflect the functional ratio. Since the latter two components are both dimers in the enzyme complex, the functional ratio would be 1:0.9:0.8. This result is interesting in the light of studies on similar systems such as the 4-sulfobenzoyl 3,4-dioxygenase (16) and dibenzofuran 4,4a-dioxygenase (2) systems, which show low molar concentrations of reductases. However, in all of these systems, no evidence is presented for the ratio in whole cells, with the consequence that the differences may be due to poor or differential extraction. In addition, in 4-sulfobenzoyl 3,4-dioxygenase, although the reductase B component is present at 30% the molar concentration of the oxygenase component (16), this corresponds to only one of two reductases (B and C) in this system, and it is possible that reductase C is the authentic electron donor. Significantly, maximum activity of this system could be achieved only with a molar excess of the reductase.

The immunological results concerning the amount of the three benzene dioxygenase components were supported by estimation of the amount of 2Fe-2S cluster in the ISP_{BED} and

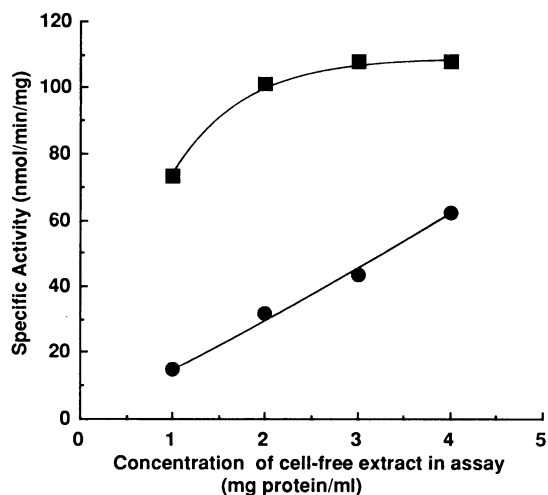


FIG. 5. Benzene dioxygenase activity in cell extracts of strain *P. putida* ML2 (●) and *P. putida* ML2 containing plasmid pJRM606 (■). Values are means of three replicates with a standard error of <5%.

$\text{ferredoxin}_{\text{BED}}$ of whole cells. In this case, the amount of $\text{ferredoxin}_{\text{BED}}$ cluster was slightly lower than that estimated for the protein. Both the immunological assays and EPR spectroscopic measurements were standardized by reference to purified protein components. A possible reason for this apparent discrepancy is that a fraction of the $\text{ferredoxin}_{\text{BED}}$ is partly denatured or that the assembly of the iron-sulfur clusters in the protein is incomplete. This latter possibility would imply that the insertion of iron-sulfur clusters into $\text{ferredoxin}_{\text{BED}}$ and ISP_{BED} may be a limiting factor of the dioxygenase *in vivo*. The mechanism of insertion of iron-sulfur clusters into proteins is not known in general, though there is some evidence for the involvement of a specific mechanism in chloroplasts (21, 22).

From the results of the EPR spectroscopic measurements, the intracellular concentrations of $\text{ferredoxin}_{\text{BED}}$ and ISP_{BED} were estimated to be 0.48 and 1.3 mM, respectively. These values are approximately 2 orders of magnitude higher than the maximum concentration present in enzyme assays *in vitro*. To examine the effect of increasing the amount of $\text{ferredoxin}_{\text{BED}}$ *in vivo* on enzyme activity, plasmid pJRM606, encoding the *bedB* gene under the control of the *tac* promoter, was transferred into *P. putida* ML2. Western blotting demonstrated clearly that the $\text{ferredoxin}_{\text{BED}}$ was expressed efficiently in both *E. coli* and *P. putida*. In *P. putida*, this resulted in an approximate doubling of the amount of $\text{ferredoxin}_{\text{BED}}$ protein in the cell and a 2.3-fold increase in the amount of iron-sulfur EPR signal. This elevation in the intracellular concentration of $\text{ferredoxin}_{\text{BED}}$ resulted in a substantial increase in the *in vitro* activity of benzene dioxygenase in cell extracts, enabling an estimation of the specific activity of the enzyme. Thus, it can be seen from Fig. 5 that an increase in $\text{ferredoxin}_{\text{BED}}$ concentration in the assay from 14 to 33 $\mu\text{g}/\text{ml}$ (present in 1 mg of *P. putida* ML2 and *P. putida* ML2(pJRM606) cell extracts, respectively) results in an increase in specific activity from 13 to 72 nmol/min/mg. This relates to an increase from 10 to 50 nmol/min/mg when pure $\text{ferredoxin}_{\text{BED}}$ protein was added to an assay (Fig. 2). However, there was no increase in the whole-cell oxidation of benzene by *P. putida* ML2(pJRM606), confirming that in intact cells, $\text{ferredoxin}_{\text{BED}}$ does not limit enzyme activity. Similar results were obtained by Murdock et al. with the naphthalene dioxygenase (19). An increase in the intracellular concentration of $\text{ferredoxin}_{\text{BED}}$ had no initial effect on whole-cell dioxygenase

activity although it did enable sustained indigo biosynthesis, probably by compensating for the fraction of ferredoxin inactivated by indigo. It is interesting that in the present work, the maximum activity that was obtained in vitro in the presence of additional ferredoxin was still only 30% of that achieved in vivo. This is due to dioxygenase activity in vitro no longer being limited by ferredoxin but being limited by another component of the system, probably the reductase, as indicated by the twofold enhancement in activity in the presence of additional purified reductase_{BED} (Table 2). In conclusion, when one is dealing with complex enzymes such as dioxygenase, both absolute and relative concentrations of components must be considered when one is extrapolating from in vitro to in vivo studies.

ACKNOWLEDGMENTS

This research was supported by grants from Shell Research Ltd. (J.R.M.) and the King's College Research Strategy Fund (C.E.C.) and by a U.K. Science and Engineering Research Council Studentship to C.S.B.

REFERENCES

- Axcell, B. C., and P. J. Geary. 1975. Purification and some properties of a soluble benzene-oxidizing system from a strain of *Pseudomonas*. *Biochem. J.* **146**:173–183.
- Bünz, P. V., and A. M. Cook. 1993. Dibenzofuran 4,4a-dioxygenase from *Sphingomonas* sp. strain RW1: angular dioxygenation by a three-component enzyme system. *J. Bacteriol.* **175**:6467–6475.
- Cooper, C. E., R. Cammack, C. L. Joannou, H.-M. Tan, C. S. Butler, and J. R. Mason. 1991. EPR signals from iron-sulphur centres in benzene dioxygenase. *J. Inorg. Biochem.* **43**:258.
- Condon, C., R. Cammack, D. S. Patil, and P. Owen. 1985. The succinate dehydrogenase of *Escherichia coli*. *J. Biol. Chem.* **260**:9427–9434.
- Crutcher, S. E., and P. J. Geary. 1979. Properties of the iron-sulphur proteins of the benzene dioxygenase system from *Pseudomonas putida*. *Biochem. J.* **177**:393–400.
- Davison, J., M. Heusterspreute, N. Chevalier, H.-T. Vunh, and F. Brunel. 1987. Vectors with restriction site banks. V. pJRD 215, a wide-host-range vector with multiple cloning sites. *Gene* **51**:275–280.
- Ditta, G., S. Stanfield, D. Corbin, and D. R. Helinski. 1980. Broad host range DNA cloning system for Gram-negative bacteria: construction of a gene bank of *Rhizobium meliloti*. *Proc. Natl. Acad. Sci. USA* **77**:7347–7351.
- Figurski, D. H., and D. R. Helinski. 1979. Replication of an origin-containing derivative of plasmid RK2 dependent on a plasmid function provided in *trans*. *Proc. Natl. Acad. Sci. USA* **76**:1648–1652.
- Geary, P. J., and D. P. E. Dickson. 1981. Mossbauer spectroscopic studies of the terminal dioxygenase protein of benzene dioxygenase from *Pseudomonas putida*. *Biochem. J.* **195**:199–203.
- Geary, P. J., J. R. Mason, and C. L. Joannou. 1990. The benzene dioxygenase from *Pseudomonas putida*. *Methods Enzymol.* **188**:52–60.
- Geary, P. J., F. Saboowalla, D. Patil, and R. Cammack. 1984. An investigation of the iron-sulphur proteins of benzene dioxygenase from *Pseudomonas putida* by electron-spin-resonance spectroscopy. *Biochem. J.* **217**:667–673.
- Gibson, D. T., and V. Subramanian. 1984. Microbial degradation of aromatic hydrocarbons, p. 181–252. In D. T. Gibson (ed.), *Microbial degradation of organic compounds*. Marcel Dekker, New York.
- Hanukoglu, I., and C. R. Jefcoate. 1980. Mitochondrial cytochrome P-450_{sec}. Mechanism of electron transport by adrenodoxin. *J. Biol. Chem.* **255**:3057–3061.
- Hess, H. H., M. B. Lees, and J. E. Derr. 1978. A linear Lowry-Folin assay for both water-soluble and sodium dodecyl sulphate-solubilised proteins. *Anal. Biochem.* **85**:295–300.
- Irie, S., S. Doi, T. Yorifuji, M. Takagi, and K. Yano. 1987. Nucleotide sequencing and characterization of the genes encoding benzene oxidation enzymes of *Pseudomonas putida*. *J. Bacteriol.* **169**:5174–5179.
- Locher, H. H., T. Leisinger, and A. M. Cook. 1991. 4-Sulphobenzoate 3,4-dioxygenase. Purification and properties of a desulphonative two-component enzyme system from *Comamonas testosteroni* T-2. *Biochem. J.* **274**:833–842.
- Mason, J. R., and R. Cammack. 1992. The electron-transport proteins of hydroxylating bacterial dioxygenases. *Annu. Rev. Microbiol.* **46**:277–305.
- Morrice, N., P. J. Geary, R. Cammack, A. Harris, F. Beg, and A. Aitken. 1988. Primary structure of protein B from *Pseudomonas putida*, member of a new class of 2Fe-2S ferredoxins. *FEBS Lett.* **231**:336–340.
- Murdock, D., B. D. Ensley, C. Serdar, and M. Thalen. 1993. Construction of metabolic operons catalyzing the *de novo* biosynthesis of indigo in *Escherichia coli*. *Bio/Technology* **11**:381–386.
- Stock, J. B., B. Rauch, and S. Roseman. 1977. Periplasmic space in *Salmonella typhimurium* and *Escherichia coli*. *J. Biol. Chem.* **252**:7850–7861.
- Takahashi, Y., A. Mitsui, Y. Fujita, and H. Matsubara. 1991. Roles of ATP and NADPH in formation of the Fe-S cluster of spinach ferredoxin. *Plant Physiol.* **95**:104–110.
- Takahashi, Y., A. Mitsui, T. Hase, and H. Matsubara. 1986. Formation of the iron-sulfur cluster of ferredoxin in isolated chloroplasts. *Proc. Natl. Acad. Sci. USA* **83**:2434–2438.
- Tan, H.-M., and J. R. Mason. 1990. Cloning and expression of the plasmid-encoded benzene dioxygenase genes from *Pseudomonas putida* ML2. *FEMS Microbiol. Lett.* **72**:259–264.
- Tan, H.-M., H.-Y. Tang, C. L. Joannou, N. H. Abdel-Wahab, and J. R. Mason. 1993. Functional domains in the novel benzene dioxygenase from *Pseudomonas putida* ML2 revealed by nucleotide sequencing of the structural genes. *Gene* **130**:33–39.
- Tyson, C. A., J. D. Lipscomb, and I. C. Gunsalus. 1972. The roles of putidaredoxin and P450_{cam} in methylene hydroxylation. *J. Biol. Chem.* **247**:5777–5784.
- Zamanian, M., and J. R. Mason. 1987. Benzene dioxygenase in *Pseudomonas putida*. Subunit composition and immuno-cross-reactivity with other aromatic dioxygenases. *Biochem. J.* **244**:611–616.