

immature female before she starts making her long burrow. The immature female and mature male burrow very closely together, or even in the same short burrow; the male impregnates the female, then the female leaves that burrow and starts one on her own account, the male never coming near her again. When she has laid all her eggs she dies. It is possible that in my case the male may have been in a tiny burrow adjacent.

Case of *Cutis Verticis Gyrata*.

By M. G. HANNAY, M.D.

PATIENT, a male Jew, of dark complexion, age 23, has suffered since childhood from a chronic dry pruriginous affection of the skin of the trunk and limbs, but otherwise his general condition is good, and there is nothing of importance in the family or personal history. The scalp condition was only noticed about nine months ago. Over the vertex and occipital region there are



FIG. 1.

thickened folds, separated by narrow furrows, &c. (fig. 1). On the prominent portions there is a definite thinning of the hair, but otherwise the surface appears normal. There are no subjective symptoms. The condition has been sufficiently frequently described to be familiar, but no previous case has, to my knowledge, been recorded in this country. The first American cases were published last year. A section shows a mild degree of simple inflammatory reaction, chiefly localized in the neighbourhood of the follicles (fig. 2).

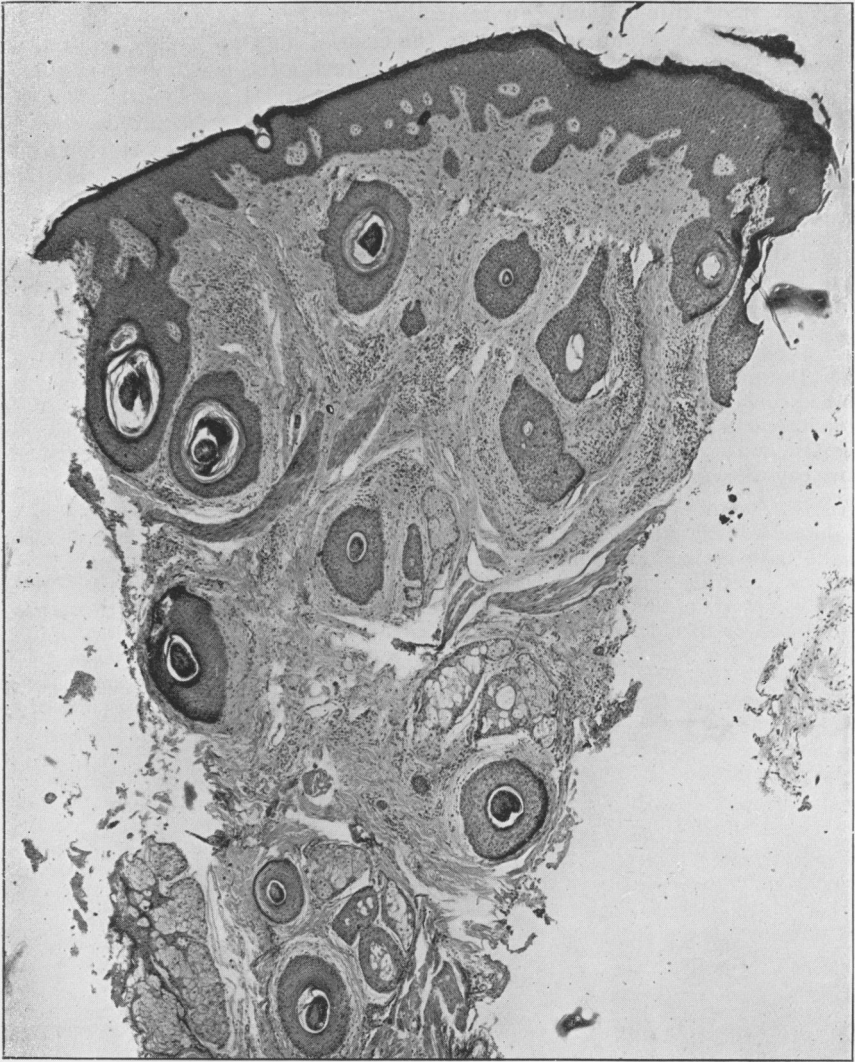


FIG. 2.