

Demonstration that a Lectin-like Receptor (gp90^{MEL}) Directly Mediates Adhesion of Lymphocytes to High Endothelial Venules of Lymph Nodes

Joyce S. Geoffroy and Steven D. Rosen

Department of Anatomy, University of California, San Francisco, California 94143-0452

Abstract. Lymphocyte migration from the blood into most secondary lymphoid organs is initiated by a highly selective adhesive interaction with the endothelium of specialized blood vessels known as high endothelial venules (HEV). The propensity of lymphocytes to migrate to particular lymphoid organs is known as lymphocyte homing, and the receptors on lymphocytes that dictate interactions with HEV at particular anatomical sites are designated "homing receptors". Based upon antibody blockade experiments and cell-type distribution studies, a prominent candidate for the peripheral lymph node homing receptor in mouse is the ≈90-kD cell surface glycoprotein

(gp90^{MEL}) recognized by the monoclonal antibody MEL-14. Previous work, including sequencing of a cDNA encoding for this molecule, supports the possibility that gp90^{MEL} is a calcium-dependent lectin-like receptor. Here, we show that immunoaffinity-purified gp90^{MEL} interacts in a sugar-inhibitable manner with sites on peripheral lymph node HEV and prevents attachment of lymphocytes. Lymphocyte attachment to HEV in Peyer's patches, a gut-associated lymphoid organ, is not affected by gp90^{MEL}. The results demonstrate that gp90^{MEL}, as a lectin-like receptor, directly bridges lymphocytes to the endothelium.

LYMPHOCYTES move extensively throughout the body, migrating from the blood into lymphoid organs and back to the blood again via lymphatics. The overall process, known as lymphocyte recirculation, is an essential component of immune surveillance as it brings potentially responsive lymphocytes into contact with antigens sequestered within secondary lymphoid organs (reviewed in Butcher, 1986; Duijvestijn and Hamann, 1989; Ford, 1975; Stoolman, 1989; Woodruff et al., 1987; Yednock and Rosen, 1989). Entry of blood-borne lymphocytes into all secondary lymphoid organs, except the spleen, is initiated by a highly specific cell-cell recognition event between lymphocytes and the endothelial cells of specialized postcapillary venules found within these organs (Gowans, 1959; Gowans and Knight, 1964). These venules are characterized by having a cuboidal or high endothelial lining and are referred to as high endothelial venules (HEV).¹ The adhesive interactions between lymphocytes and HEV have been studied *in vivo* with short term recirculation studies (reviewed in Butcher et al., 1980) and *in vitro* with the highly validated Stamper-Woodruff adherence assay (Stamper and Woodruff, 1976), in which viable lymphocytes, overlaid onto cryostat-cut sections of lymphoid organs, selectively adhere to sectioned profiles of HEV. Three distinct adhesive specificities have been shown to ex-

ist, one governing lymphocyte attachment to HEV in peripheral lymph nodes (PN), another for gut-associated Peyer's patches (PP), and a recently identified specificity for lung-associated lymph nodes (Butcher et al., 1980; Chin et al., 1983; Chin et al., 1984; Geoffroy et al., 1988).² It has been postulated that the endothelial cells of HEV bear cell surface ligands that are distinctive for particular lymphoid organs or anatomically related collections of lymphoid organs (Butcher and Weissman, 1984). The ligands are the heterophilic adhesion partners for a set of complementary lymphocyte receptors. Depending on a lymphocyte's developmental stage, class, subclass, and history of antigenic stimulation, the particular array of receptors expressed by the cell determines its ability to bind to and hence initiate extravasation across HEV in different anatomical sites (for review, see Butcher, 1986). "Homing receptor" is the designation applied to this set of lymphocyte adhesion receptors, reflecting their primary role in controlling the distinctive migratory or "homing" propensities of lymphocyte and lymphoma populations. The activity of these specific adhesion molecules appears to be supplemented by accessory molecules such as LFA-1, which act to strengthen the lymphocyte-HEV interaction without contributing to target organ specificity (Hamann et al., 1988; Pals et al., 1988). The use of this system of highly refined

1. *Abbreviations used in this paper:* HEV, high endothelial venules; PN, peripheral lymph node; PP, Peyer's patch.

2. Additional lymphocyte-endothelial adhesive specificities may regulate lymphocyte extravasation at sites of chronic inflammation such as inflamed joints (Jalkanen et al., 1986) and skin (Sackstein et al., 1988).

homing specificities is believed to lie in its potential to regulate the exact mix of functional subpopulations which populate each lymphoid organ such that immune responses initiated within are appropriate and maximally efficient for the particular anatomical site (Butcher, 1986).

A number of candidates have been identified for HEV ligands in the mouse (Streeter et al., 1988a,b) and for lymphocyte homing receptors in the mouse, rat, and human systems (Chin et al., 1986; Gallatin et al., 1983; Holzmann et al., 1989; Jalkanen et al., 1986; Rasmussen et al., 1985; Woodruff et al., 1987). In the rat, evidence exists that homing receptors are shed into lymph as soluble factors. One factor, termed high endothelial binding factor (HEBF_{LN}), prevents lymphocyte attachment to PN HEV while having no effect on attachment to PP HEV when it is prereacted with tissue sections (Rasmussen et al., 1985). The other identified factor, HEBF_{PP}, has the opposite activity (Chin et al., 1986). In the mouse, the most extensively studied candidate for a homing receptor is the ~90-kD (i.e., gp90^{MEL}) glycoprotein detected on the surface of lymphocytes by the MEL-14 mAb (Gallatin et al., 1983). Lymphocytes pretreated with this antibody are incapable of attaching to PN HEV but bind at control levels to PP HEV. The cell surface level of gp90^{MEL} on various populations of normal lymphocytes and lymphomas correlates with their ability to bind to PN HEV (Gallatin et al., 1983; Reichert et al., 1983; Yednock et al., 1987a). In addition, our previous work has shown that a calcium-dependent, lectin-like receptor involved in PN homing is closely associated, and very likely identical, to gp90^{MEL} (Yednock et al., 1987b). In support of identity, cDNAs encoding gp90^{MEL} predict a transmembrane glycoprotein with a calcium-dependent lectin domain at its extracellular amino terminus (Lasky et al., 1989; Siegelman et al., 1989). An EGF-like domain and two exact repeats of a complement regulatory domain comprise the remainder of the extracellular region (Lasky et al., 1989; Siegelman et al., 1989). The present study confirms that gp90^{MEL} is an essential element of the PN homing receptor by showing that the purified antigen can interact with sites on PN HEV and prevent lymphocyte attachment in an organ-specific manner. Additionally, we provide the first direct evidence that specific sugars and polysaccharides can block the biological activity of the isolated receptor.

Materials and Methods

Materials

Frozen spleens from ICR and Swiss-Webster mice were obtained from Rockland, Inc. (Gilbertsville, PA) or Bioproducts for Science (Indianapolis, IN). Mesenteric lymph nodes and spleen were also dissected from ICR mice (Harland Sprague-Dawley, Inc., Indianapolis, IN). The Centriprep and Centricon 30 were purchased from Amicon, Inc. (Danvers, MA). Phosphorylated monosaccharides, cacodylic acid, cyanogen bromide-activated Sepharose-4B, PMSF, aprotinin, triethylamine, alpha 1-acid glycoprotein, and BSA (Cohn V; BSA) were obtained from Sigma Chemical Co. (St. Louis, MO). Triton X-100 came from Boehringer Mannheim (Indianapolis, IN) and CHAPS was obtained from Calbiochem-Behring Corp. (La Jolla, CA). Paraformaldehyde was purchased from EM Science (Cherry Hill, NJ). PPME was purified from *Hansenula holstii* core mannan, kindly provided by Dr. M. E. Slodki (U.S. Department of Agriculture, Northern Regional Center, Peoria, IL). The mnn 1 and mnn 2 mannans were generous gifts from Dr. C. E. Ballou (Department of Biochemistry, University of California, Berkeley, CA). The MEL-14 hybridoma was kindly provided by Dr. Eugene Butcher (Department of Pathology, Stanford University).

Purification of Antigen

The purification of gp90^{MEL} was achieved by a modification of a previously described procedure (Lasky et al., 1989). The starting material was frozen mouse spleens or mesenteric lymph nodes. Tissues were minced with a razor blade and then homogenized with a Potter-Elvehjem tissue grinder in 5 ml of lysis buffer (2% Triton-X 100 in Dulbecco's phosphate buffered saline (PBS), containing 1 mM PMSF, 1% aprotinin, and 0.02% Na₂S₂O₃) per gram (wet weight) tissue. Typical preparations used tissues from 200 animals. The lysates were prepared, clarified, and precleared with rat serum-Sepharose 4B as previously described (Lasky et al., 1989). The flow through from the rat-serum column was applied to a 4-ml column of Sepharose 4B conjugated with MEL-14 mAb (1 mg mAb/ml Sepharose) which had been equilibrated in lysis buffer. The column was washed consecutively with 10 ml of lysis buffer followed by 30 ml of column buffer (10 mM CHAPS in PBS containing 1 mM PMSF, 1% aprotinin, and 0.02% Na₂S₂O₃). Antigen was released from the column in 15 ml of a low pH buffer (10 mM CHAPS, 100 mM glycine, 200 mM NaCl, 1% aprotinin, 1 mM PMSF, 0.02% Na₂S₂O₃, pH 3) and collected into 1.5 ml of 1 M Tris-HCl (pH 7.6) to neutralize the pH. After antigen release, the column was washed with 20 mM triethylamine, 200 mM NaCl (pH 11) and reequilibrated with column buffer. The antigen, which was diluted to 50 ml in column buffer, was reapplied to the column, and the elution procedure was repeated. The purified protein was concentrated in two steps by sequential use of Centriprep 30 and Centricon 30 concentrators. Purity was evaluated by SDS-PAGE with visualization by silver staining (Merrill et al., 1981). Based upon comparisons with alpha 1 acid glycoprotein standards, typical yields were 25–35 µg gp90^{MEL} per 200 spleen and 20–30 µg from mesenteric lymph nodes from 200 animals. No difference could be detected in the biological activity of gp90^{MEL} isolated from the two sources. The molecular weight distribution of antigen isolated from spleen was slightly broader than that from mesenteric lymph nodes.

Binding Assay

In a series of experiments, it was determined that the presence of 250 µM CHAPS in the assay medium did not interfere with the viability of lymphocytes (as assessed by Trypan blue exclusion) or their ability to bind to HEV in sections of PN and PP. Purified gp90^{MEL} in column buffer was equilibrated with 500 µM CHAPS in RPMI 1640 (CHAPS/RPMI) by several exchanges in a Centricon 30 concentrator. BSA was added to antigen solutions to a final concentration of 1 mg/ml. Control buffer solutions were prepared in the same way. One part of antigen solution was mixed with one part of RPMI (2 mg/ml BSA) containing potential inhibitors (phosphorylated sugars, polysaccharides, or MEL-14 mAb), and the mixture was incubated for 1 h at 4°C before incubation with the tissue sections (see below). PNs and PPs, dissected from ICR mice, were mounted on a cushion of gum tragacanth and snap-frozen in 2-methylbutane cooled in a liquid nitrogen bath. Cryostat-cut sections (10 µm) were picked up on epoxy-coated well slides (Carlson Scientific, Inc., Peotone, IL). The slides were fixed in 1% paraformaldehyde in 0.1 M sodium cacodylate (pH 7.3) for 20 min at 4°C, and subsequently rinsed in PBS. Appropriate dilutions of purified antigen or control buffer were applied to the wells (75 µl per well), and the slides were placed on a metal pan supported by an ice pack and rotated on an orbital shaker for 30 min at 50 rpm. The slides were then washed in a 250 ml bath of PBS (4°C) and then subjected to the Stamper-Woodruff *in vitro* adherence assay (Stamper and Woodruff, 1976) with the modifications described previously (Yednock et al., 1987b). Mesenteric lymph node lymphocytes (10⁷ per ml in a volume of 100 µl per well) were used as test cells. At least four replicate sections were used for the control condition (buffer) and for each experimental condition. Values for lymphocytes bound per unit area HEV were determined by digital morphometry on a Bioquant image analyzer (R & M Biometrics, Nashville, TN). Samples were coded and evaluated blindly. At least 15 segments of HEV were counted for each PN and PP section. In the different experiments, control levels of binding ranged from 24 to 61 lymphocytes per 100 square micrometers HEV for PN and from 30 to 67 lymphocytes per 100 square micrometers HEV for PP.

Results

Our overall approach was based upon one developed by Springer, Shaw, and their respective colleagues (Dustin et al., 1989; Plunkett et al., 1987; Selvaraj et al., 1987) to study a receptor–ligand interaction that underlies a number

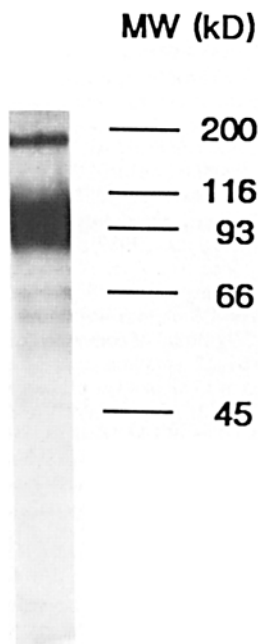


Figure 1. SDS-PAGE analysis of purified gp90^{MEL}. Antigen was purified from detergent lysates of mouse spleen by immunoaffinity chromatography on a MEL-14 mAb column. The purified antigen was analyzed on a 7.5% SDS gel with visualization by silver staining. The high molecular mass markers (Bio-Rad Laboratories, Cambridge, MA) were myosin (200 kD), beta-galactosidase (116 kD), phosphorylase *b* (93 kD), BSA (66 kD), and ovalbumin (45 kD).

of T-lymphocyte adhesion events including the binding of cytotoxic T-cells to target cells and the attachment of thymocytes to thymic epithelial cells. In these studies, solubilized receptor from T-cells (CD2 glycoprotein) was shown to interact with ligand sites (i.e., LFA-3 glycoprotein) on partner

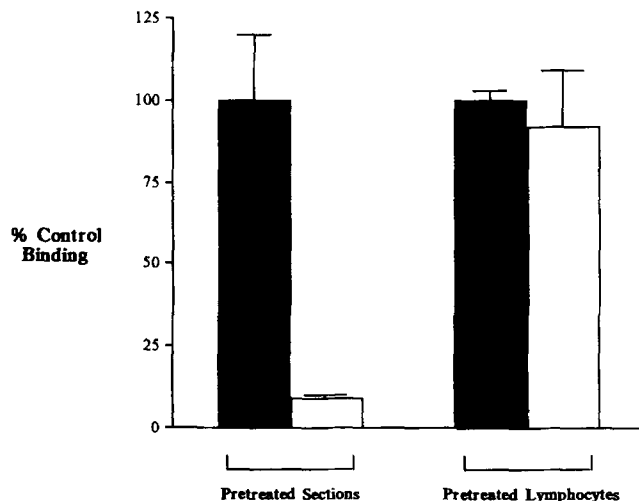


Figure 2. The effect of purified gp90^{MEL} on lymphocyte attachment to PN HEV. Cryostat-cut sections of peripheral lymph node were exposed to 1 μ g of gp90^{MEL} in 75 μ l buffer (250 μ M CHAPS, 1 mg/ml BSA in RPMI) or buffer alone for 30 min at 4°C. The sections were washed in a large volume of PBS and then tested for their ability to support binding of untreated lymphocytes as described in Materials and Methods. For lymphocyte treatments, lymphocytes (4×10^6) from mesenteric lymph nodes were suspended in 300 μ l of gp90^{MEL} in buffer (13 μ g/ml) or in buffer alone for 30 min at 4°C. The lymphocytes were washed 3 \times in PBS and tested for binding to untreated PN sections. Values for lymphocytes bound per unit area HEV were measured and computed as a percent of control binding, referenced to the level of binding in the buffer control. Dark bars represent treatments with buffer control and open bars represent treatments with gp90^{MEL}. The error bars represent SEMs based upon three independent replicates.

cells and block intercellular adhesion. In reciprocal experiments, isolated LFA-3 was demonstrated to interact with CD2 on intact T-cells and block adhesion. A key to these studies was that the solubility and biological activity of the purified transmembrane glycoproteins could be maintained in a low detergent concentration, which was compatible with the viability of the test cells. Guided by the strategy of these experiments, we wished to determine whether purified gp90^{MEL} could bind to HEV in cryostat-cut sections of PN and prevent lymphocyte attachment in the Stamper-Woodruff in vitro adherence assay. With mouse spleen and mesenteric lymph nodes as the sources of antigen, purification was achieved by immunoaffinity chromatography on a MEL-14 mAb column (see Materials and Methods). In a typical preparation, the purified material was resolved by SDS-PAGE as a major diffuse band at 90 kD and variable amounts of a minor ($\leq 10\%$) 180-kD band (Fig. 1). The larger component appears to be a dimer of the smaller, since upon electroelution and reelectrophoresis it is substantially converted to the 90-kD form (Brian Williams and S. Rosen, unpublished observations).

We chose CHAPS as the detergent for the purified antigen, because it is relatively nondenaturing and can be readily removed by membrane filtration. We determined (data not shown) that the maximum concentration of CHAPS compatible with the Stamper-Woodruff assay was 250 μ M. When the assay was performed at this concentration or lower, the density of lymphocytes bound per unit area of HEV was equivalent to that in detergent-free buffer.

Cryostat-cut sections of PN were pretreated for 30 min with gp90^{MEL} in 250 μ M CHAPS or with this concentration of detergent alone. The sections were washed in detergent-free medium and tested for their ability to support lymphocyte attachment to HEV. As shown in Fig. 2, lymphocyte binding to PN HEV was almost completely blocked after exposure of the sections to 1 μ g of gp90^{MEL} (~ 100 nM). In contrast, pre-exposure of lymphocytes to the same antigen concentration followed by washing of the cells resulted in no decrement in lymphocyte attachment to HEV. Thus, the isolated antigen exerted its inhibitory effect on the HEV and not the lymphocyte, consistent with the suspected role of gp90^{MEL} as a lymphocyte-associated adhesive receptor.

Although the antigen preparations were $>90\%$ pure (Fig. 1), it was essential to demonstrate that the inhibitory activity of the purified antigen was, in fact, due to gp90^{MEL} and not to a contaminant. To address this issue, PN sections were pretreated with purified gp90^{MEL} in the presence and absence of MEL-14 mAb. After the preincubation step, the sections were washed extensively so that antibody would not be available to react with the test lymphocytes. As shown in Fig. 3, the antibody completely prevented the inhibitory activity of the purified antigen. Thus, the active constituent in the immunisolated material must be the antigen itself.

As reviewed above, gp90^{MEL} is believed to be involved in organ-specific lymphocyte adhesion to HEV. It was therefore of interest to determine whether isolated gp90^{MEL} would interfere with lymphocyte attachment to PP HEV as it did with attachment to PN. When sections of PP were pretreated with up to 2 μ g of purified antigen, there was no inhibition of subsequent lymphocyte attachment (Fig. 4). With the same antigen preparation tested in parallel, 0.1 μ g of antigen produced $\sim 50\%$ inhibition of lymphocyte attachment to PN HEV, and

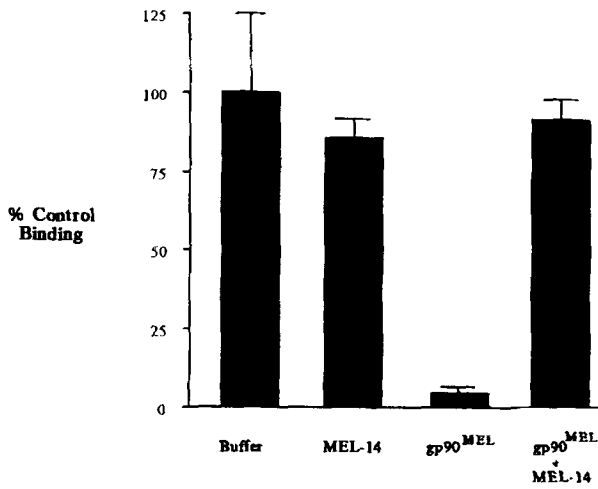


Figure 3. The effect of MEL-14 mAb on the adhesion-blocking activity of purified gp90^{MEL}. Sections of peripheral node were preincubated with control buffer, or 2 μ g of MEL-14 mAb, 1 μ g of gp90^{MEL}, or 1 μ g of gp90^{MEL} + 2 μ g of MEL-14 mAb. Sections were then washed and subjected to the lymphocyte binding assay. Values of lymphocytes bound per unit area HEV were computed as a percent of control binding, referenced to the level of binding in the buffer control. The error bars represent SEMs based upon four independent replicates. The MEL-14 mAb alone treatment was included to establish that the section washing procedure was adequate to reduce the antibody concentration to a level that did not interfere with lymphocyte binding.

at 0.25 μ g and above, inhibition was >80% (Fig. 4). Thus, gp90^{MEL} was at least 20-fold more active on the PN HEV sites than the PP HEV sites. Representative micrographs illustrating the differential effects of antigen on lymphocyte attachment activity of the two kinds of HEV are shown in Fig. 5.

The demonstration above that purified gp90^{MEL} has biological activity allowed us to test directly the predicted lectin function of the molecule. Our previous work had shown that millimolar levels of mannose-6-phosphate (M6P) or of the structurally related fructose-1-phosphate (F1P) block lymphocyte attachment to PN HEV by reacting with gp90^{MEL} or a closely associated molecule on the lymphocyte surface (Yednock et al., 1987a,b). If these effects were, in fact, through a direct interaction of the sugars with gp90^{MEL}, then biological activity of isolated gp90^{MEL} should be competed by the same sugars. As shown in Fig. 6, 100 nM of either M6P (A) or F1P (B) largely prevented the blockade of PN HEV sites by gp90^{MEL}. Three control sugars, fructose-6-phosphate (A), galactose-6-phosphate, and glucose-6-phosphate (B), all previously shown to be relatively inactive in blocking lymphocyte attachment to PN HEV, did not antagonize the inhibitory activity of the isolated antigen. Competition experiments were also conducted with the M6P-rich mannan called PPME, a highly specific ligand for the active site of the PN homing receptor (Stoolman et al., 1984; Yednock et al., 1987b). As expected, this polysaccharide prevented the adhesion-blocking activity of gp90^{MEL}, whereas two control mannans (mnn 1 and mnn 2) were inactive (Fig. 7).

Discussion

Previous work has established that gp90^{MEL} is essential for

PN homing, but heretofore, there has been no direct information bearing on whether this receptor could, itself, bind to HEV-ligands. The earlier results, for example, are compatible with the possibility that gp90^{MEL} interacts with other lymphocyte surface molecules, either integral or peripheral membrane components, to form a homing receptor complex. Thus an element of the complex, other than gp90^{MEL}, could form the actual bridge to the endothelium. The demonstration above that isolated gp90^{MEL} can react with HEV and block the lymphocyte attachment activity of the HEV leads to the unequivocal conclusion that gp90^{MEL} is capable of a direct binding interaction with HEV ligands. Moreover, this interaction is organ specific as established by the selective inactivation of PN sites as compared to PP sites. Thus, the information required for the selective interaction of lymphocytes with the endothelium of PN HEV resides, at least in part, within the gp90^{MEL} molecule. Determining whether gp90^{MEL}, by itself, is capable of mediating the lymphocyte-HEV adhesive interaction will require reconstitution experiments with the purified glycoprotein or alternatively, transfection experiments with its cDNA. Although gp90^{MEL} may be sufficient for the interaction, it seems probable, in light of results from this system (Hamann et al., 1988; Pals et al., 1988) and from related systems (Goverman et al., 1986; Springer et al., 1987), that general adhesion molecules (e.g., LFA-1) may be necessary to supplement the molecules conferring target organ-specificity (e.g., gp90^{MEL}).

Our finding that isolated gp90^{MEL} blocks the adhesive ligands of PN HEV is highly reminiscent of the activity of HEBF_{LN} in the rat system (Chin et al., 1983; Chin et al., 1984; Rasmussen et al., 1985). This factor was originally detected as a soluble factor in lymph fluid. It is apparently derived by a shedding process from integral membrane components of the lymphocyte plasma membrane. In this regard, it is noteworthy that brief incubation of mouse lymphocytes

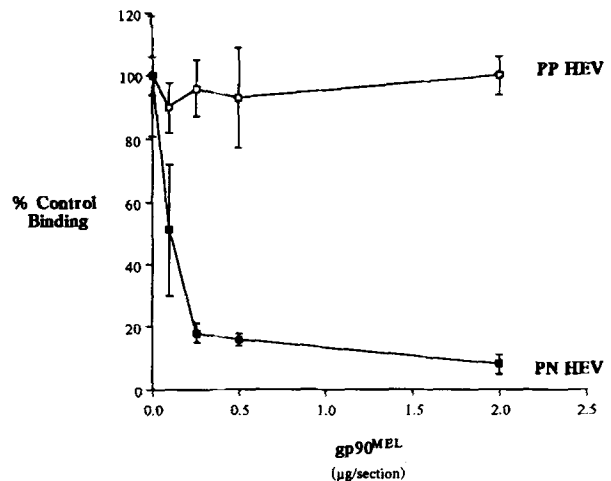


Figure 4. Lymphocyte binding to PN and PP HEV after pretreatment of sections with gp90^{MEL}. Sections of peripheral node (PN) and Peyer's patches (PP) were pretreated with the indicated amounts of purified gp90^{MEL}, washed, and then tested for their ability to support lymphocyte attachment to HEV. Lymphocytes bound per unit area of HEV was computed as a percent of control binding, referenced to the buffer control (i.e., no gp90^{MEL}). Error bars reflect SEMs for four replicate sections for each tissue type.

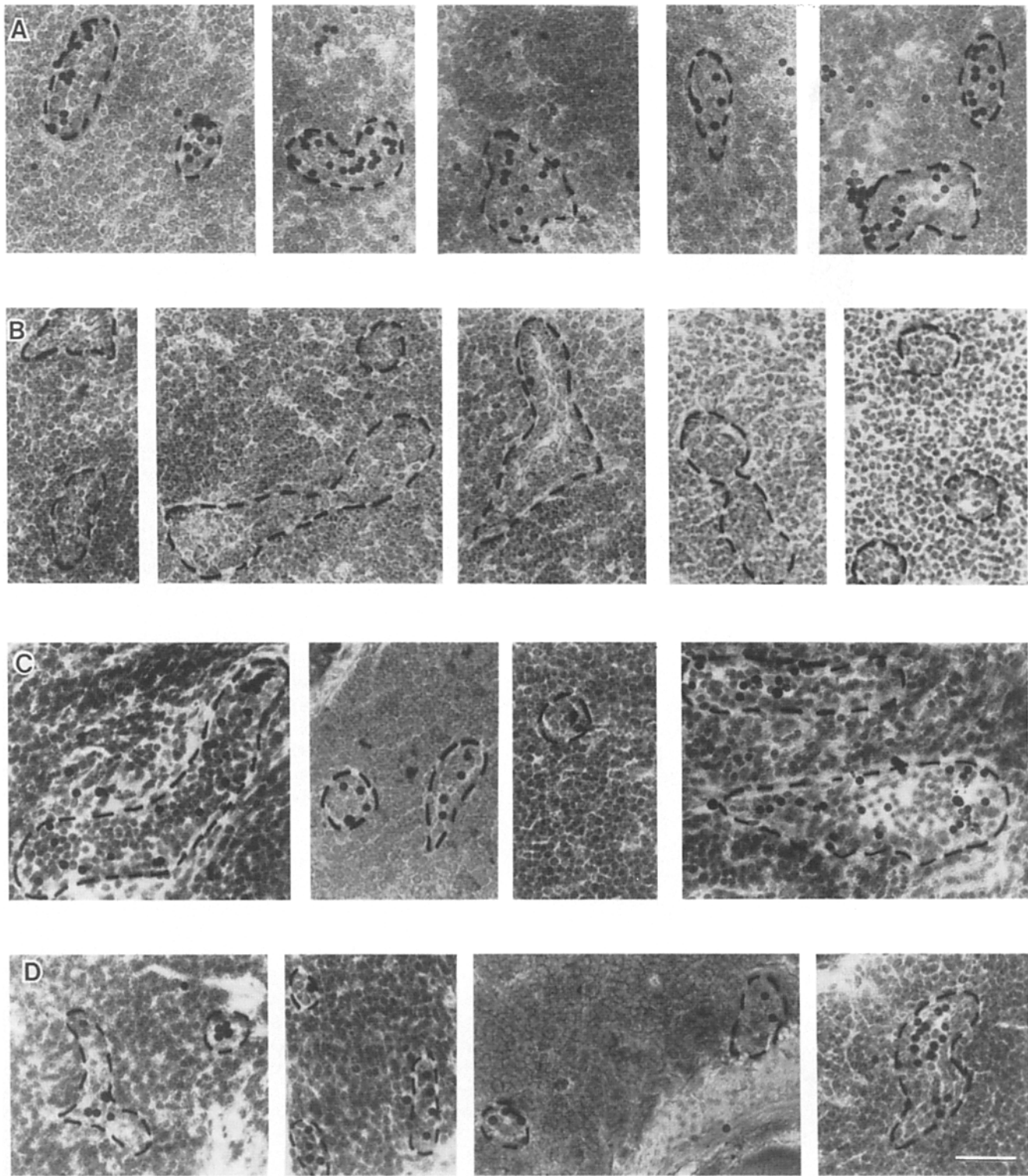


Figure 5. Lymphocyte binding to PN and PP HEV after pretreatment of sections with gp90^{MEL}. PN (A and B) and PP (C and D) sections were preincubated with control buffer (A and C) or with 2 μg/section of gp90^{MEL} (B and D) for 30 min before the binding assay. Micrographs show representative fields. The dark round cells are the exogenously added lymphocytes which have attached to the sections during the adhesion assay. Dashed lines have been drawn to outline the basement membranes of the HEV. Bar, 100 μm.

at 37°C results in the shedding of substantial amounts of soluble gp90^{MEL} with a slightly decreased (4–5 kD) molecular mass (Yednock, T. A., J. S. Geoffroy, and S. D. Rosen, unpublished). Both the soluble and membrane forms of HEBF_{LN}

are capable of blocking the activity of PN HEV ligands in an organ selective manner (Chin et al., 1984; Rasmussen et al., 1985). The molecular masses of the membrane form (135, 63, and 40 kD) of HEBF_{LN} (rat), as defined by immunopre-

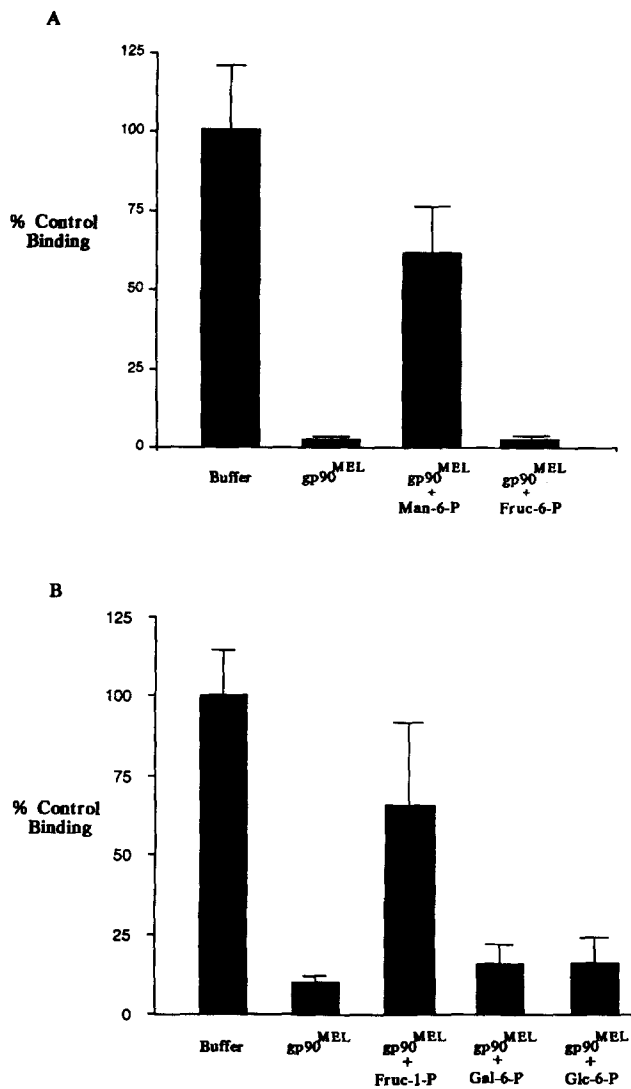


Figure 6. Effects of phosphorylated monosaccharides on the adhesion-blocking activity of gp90^{MEL}. Purified gp90^{MEL} was mixed with control buffer or with sugars (100 nM final concentration) for 60 min before the mixtures were applied (1 μ g of gp90^{MEL} per section) to sections of PN. The sections were pretreated for 30 min, and washed before the binding assay. Data are expressed as a percent of control binding (no gp90^{MEL}) as above. Error bars denote SEMs for four replicate sections. (A) Mannose-6-phosphate (Man-6-P) or fructose-6-phosphate (Fruc-6-P). (B) Fructose-1-phosphate (Fruc-1-P), galactose-6-phosphate (Gal-6-P), or glucose-6-phosphate (Glc-6-P).

precipitation with a monoclonal antibody (Rasmussen et al., 1985), do not bear any obvious relationship to that of gp90^{MEL} from mouse lymphocytes. Nonetheless, the striking functional parallels indicate the need for further exploration of the possibility that HEBF_{LN} and gp90^{MEL} might be species homologues.

The present studies confirm previous predictions that gp90^{MEL} functions as a lectin. M6P and FIP, two structurally related monosaccharides (Kaplan et al., 1977) that are active in blocking lymphocyte attachment to PN HEV, were shown to inhibit the activity of the isolated receptor, whereas three control phosphorylated monosaccharides were inactive

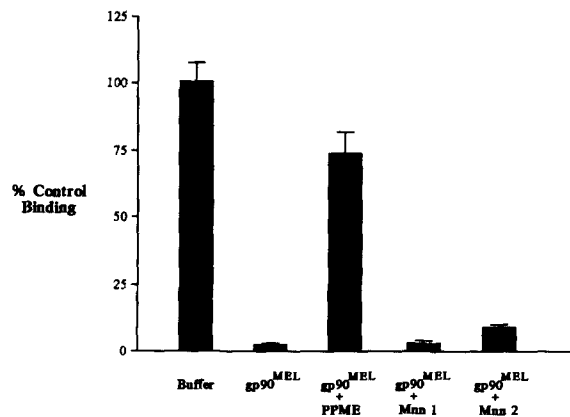


Figure 7. Effects of polysaccharides on the adhesion-blocking activity of gp90^{MEL}. Purified gp90^{MEL} was incubated with control buffer or 100 μ g/ml of PPME, mnn1 mannan, or mnn2 mannan for 60 min before applying mixtures (1 μ g of gp90^{MEL} per section) to sections of peripheral node. Sections were pretreated for 30 min and then rinsed thoroughly before the binding assay. Data are expressed as a percent of control binding (no gp90^{MEL}). Error bars denote SEMs for four replicate sections.

at the same concentrations. Similarly, PPME (a M6P-rich polysaccharide that potently competes lymphocyte attachment to PN HEV) also selectively blocked the activity of isolated gp90^{MEL}. Of particular note is that antagonism of the isolated receptor by M6P or FIP was observed at 100 nM, a concentration that is $\sim 10^4$ lower than required for inhibition of lymphocyte attachment to PN HEV. This dramatic potentiation might be explained by considerations of avidity. In the experiments with isolated receptor, the monosaccharides are competing the interaction of solubilized receptor molecules with sites on the HEV, whereas in the cell-cell adhesion assay, the lectin-like receptors that must be competed are presented in a highly multivalent array on the lymphocyte surface.

The demonstration presented herein, that gp90^{MEL} can interact directly with sites on PN HEV focuses attention on the nature of the HEV-associated ligands for this receptor. In view of the mounting evidence that this receptor functions as a lectin, it is strongly suspected that the recognition determinant of its cognate HEV-ligand will be carbohydrate in nature. Evidence is already available that sialic acid residues are essential for the function of the PN HEV ligands, although it is not yet known whether this sugar contributes directly to the actual recognition determinant or instead has a modulatory role (Rosen et al., 1989; Rosen et al., 1985). One prominent candidate for the PN HEV ligand is the 92-kD HEV-associated antigen detected by the MECA-79 antibody (Streeter et al., 1988b; Berg et al., 1989). This antibody selectively stains HEV of PN and blocks lymphocyte attachment. Future work should address whether this antigen or a physically associated molecule expresses a carbohydrate determinant that is recognized by gp90^{MEL}. The possibility exists that the EGF-like and complement regulatory domains of gp90^{MEL} might also contribute to the interaction with ligand molecules. The capability to produce recombinant forms of gp90^{MEL} in substantial quantities should provide tools that expedite the identification and biochemical dissection of the relevant endothelial molecules of PN HEV. Eventually, the analysis will undoubtedly progress to the distinct,

but presumably related HEV ligands at other anatomical locations.

The authors thank Zsuzsanna Breuer, Yasayuki Imai, Mark Singer, and Ted Yednock for comments and assistance.

The research was supported by a National Institutes of Health Postdoctoral Fellowship (F32 AR08019) to J. Geoffroy and by grants to S. D. Rosen from the National Institutes of Health (GM23547 and Multipurpose Arthritis Center Grant P60 AR20684) and the Northern California Chapter of the Arthritis Foundation.

Received for publication 6 June 1989.

References

- Berg, E. L., L. A. Goldstein, M. A. Jutila, M. Nakache, L. J. Picker, P. R. Streeter, N. W. Wu, D. Zhou, and E. C. Butcher. 1989. Homing receptors and vascular addressins: cell adhesion molecules that direct lymphocyte traffic. *Immunol. Rev.* 108:1-18.
- Butcher, E. C. 1986. The regulation of lymphocyte traffic. *Curr. Top. Microbiol. Immunol.* 128:85-122.
- Butcher, E. C., and I. L. Weissman. 1984. Lymphoid tissues and organs. In *Fundamental Immunology*. W. E. Paul, editor. Raven Press, New York, 109-127.
- Butcher, E. C., R. G. Scollay, and I. L. Weissman. 1980. Organ specificity of lymphocyte migration: mediation by highly selective lymphocyte interaction with organ-specific determinants on high endothelial venules. *Eur. J. Immunol.* 10:556-561.
- Chin, Y., G. Carey, and J. Woodruff. 1983. Lymphocyte recognition of lymph node high endothelium. V. Isolation of adhesion molecules from lysates of rat lymphocytes. *J. Immunol.* 131:1368-1374.
- Chin, Y. H., R. Rasmussen, A. G. Cakiroglu, and J. J. Woodruff. 1984. Lymphocyte recognition of lymph node high endothelium. VI. Evidence of distinct structures mediating binding to high endothelial cells of lymph nodes and Peyer's patches. *J. Immunol.* 133:2961-2965.
- Chin, Y. H., R. A. Rasmussen, J. J. Woodruff, and T. G. Easton. 1986. A monoclonal anti-HEBF_{PP} antibody with specificity for lymphocyte surface molecules mediating adhesion to Peyer's patch high endothelium of the rat. *J. Immunol.* 136:2556-2561.
- Duijvestin, A., and A. Hamann. 1989. Mechanisms and regulation of lymphocyte migration. *Immunol. Today*. 10:23-28.
- Dustin, M. L., D. Olive, and T. A. Springer. 1989. Correlation of CD2 binding and functional properties of multimeric and monomeric lymphocyte function-associated antigen 3. *J. Exp. Med.* 169:503-517.
- Ford, W. L. 1975. Lymphocyte migration and immune responses. *Prog. Allergy*. 19:1-59.
- Gallatin, W. M., I. L. Weissman, and E. C. Butcher. 1983. A cell surface molecule involved in organ-specific homing of lymphocytes. *Nature (Lond.)*. 303:30-34.
- Geoffroy, J. S., T. A. Yednock, J. L. Curtis, and S. D. Rosen. 1988. Evidence for a distinct lymphocyte homing specificity involved in lymphocyte migration to lung-associated lymph nodes. *FASEB (Fed. Am. Soc. Exp. Biol.) J.* 2:A667.
- Goverman, J., T. Hunkapiller, and L. Hood. 1986. A speculative view of the multicomponent nature of T cell antigen recognition. *Cell*. 45:475-484.
- Gowans, J. L. 1959. The recirculation of lymphocytes from blood to lymph in the rat. *J. Immunol.* 146:54-69.
- Gowans, J. L., and E. J. Knight. 1964. The route of recirculation of lymphocytes in the rat. *Proc. R. Soc. Lond. B Biol.* 159:257-282.
- Hamann, A., D. Jablonski-Westrich, A. Duijvestijn, E. C. Butcher, H. Baisch, R. Harder, and H. Thiele. 1988. Evidence for an accessory role of LFA-1 in lymphocyte-high endothelium interaction during homing. *J. Immunol.* 140:693-699.
- Holzmann, B., B. W. McIntyre, and I. L. Weissman. 1989. Identification of a murine Peyer's patch-specific lymphocyte homing receptor as an integrin molecule with an alpha chain homologous to human VLA-4. *Cell*. 56:37-46.
- Jalkanen, S., R. Bargatze, L. Herron, and E. C. Butcher. 1986. A lymphoid cell surface glycoprotein involved in endothelial recognition and lymphocyte homing in man. *Eur. J. Immunol.* 10:1195-1202.
- Kaplan, A., D. Achord, and W. Sly. 1977. Phosphohexosyl components of a lysosomal enzyme are recognized by pinocytosis receptors on human fibroblasts. *Proc. Nat. Acad. Sci. USA*. 74:2026-2030.
- Lasky, L. A., M. S. Singer, T. A. Yednock, D. Dowbenko, C. Fennie, H. Rodriguez, T. Nguyen, S. Stachel, and S. D. Rosen. 1989. Cloning of a lymphocyte homing receptor reveals a lectin domain. *Cell*. 56:1045-1055.
- Merrill, C. R., D. Goldman, S. A. Sedman, and M. H. Ebert. 1981. Ultrasensitive stain for proteins in polyacrylamide gels shows regional variation in cerebrospinal fluid proteins. *Science (Wash. DC)*. 211:1437-1438.
- Pals, S. T., A. den Otter, F. Miedema, P. Kabel, G. D. Keizer, R. J. Scheper, and C. J. L. M. Meijer. 1988. Evidence that leukocyte function-associated antigen-1 is involved in recirculation and homing of human lymphocytes via high endothelial venules. *J. Immunol.* 140:1851-1853.
- Plunkett, M., M. Sanders, P. Selvaraj, M. Dustin, and T. Springer. 1987. Rosetting of activated human T lymphocytes with autologous erythrocytes. *J. Exp. Med.* 165:664-676.
- Rasmussen, R. A., Y. H. Chin, J. J. Woodruff, and T. G. Easton. 1985. Lymphocyte recognition of lymph node high endothelium. VII. Cell surface proteins involved in adhesion defined by monoclonal anti-HEBF_{LN} (A.11) antibody. *J. Immunol.* 135:19-24.
- Reichert, R., W. Gallatin, I. Weissman, and E. C. Butcher. 1983. Germinal center B cells lack homing receptors necessary for normal lymphocyte recirculation. *J. Exp. Med.* 157:813-827.
- Rosen, S. D., M. S. Singer, T. A. Yednock, and L. M. Stoolman. 1985. Involvement of sialic acid on endothelial cells in organ-specific lymphocyte recirculation. *Science (Wash. DC)*. 228:1005-1007.
- Rosen, S. D., S. Chi, D. D. True, M. S. Singer, and T. A. Yednock. 1989. Intravenously injected sialidase inactivates attachment sites for lymphocytes on high endothelial venules. *J. Immunol.* 142:1895-1902.
- Sackstein, R., V. Falanga, J. W. Streilein, and Y.-H. Chin. 1988. Lymphocyte adhesion to psoriatic dermal endothelium is mediated by a tissue-specific receptor/ligand interaction. *J. Invest. Dermatol.* 91:423-428.
- Selvaraj, P., M. Plunkett, M. Dustin, M. Sanders, S. Shaw, and T. Springer. 1987. The T lymphocyte glycoprotein CD2 binds the cell-cell surface ligand LFA-3. *Nature (Lond.)*. 326:400-403.
- Siegelman, M. H., M. Van De Rijn, and I. L. Weissman. 1989. Mouse lymph node homing receptor cDNA clone encodes a glycoprotein revealing tandem interaction domains. *Science (Wash. DC)*. 243:1165-1172.
- Springer, T. A., M. L. Dustin, T. K. Kishimoto, and S. D. Martin. 1987. The lymphocyte function associated LFA-1, CD2, and LFA-3 molecules: cell adhesion receptors of the immune system. *Annu. Rev. Immunol.* 5:223-252.
- Stamper, H. B., and J. J. Woodruff. 1976. Lymphocyte homing into lymph nodes: in vitro demonstration of the selective affinities of recirculating lymphocytes for high-endothelial venules. *J. Exp. Med.* 144:828-833.
- Stoolman, L. M. 1989. Adhesion molecules controlling lymphocyte migration. *Cell*. 56:907-910.
- Stoolman, L. M., T. A. Yednock, and S. D. Rosen. 1987. Homing receptors on human and rodent lymphocytes: evidence for a conserved carbohydrate-binding specificity. *Blood*. 70:1842-1850.
- Streeter, P. R., E. L. Berg, B. T. N. Rouse, R. F. Bargatze, and E. C. Butcher. 1988a. A tissue-specific endothelial cell molecule involved in lymphocyte homing. *Nature (Lond.)*. 331:41-46.
- Streeter, P. R., B. T. N. Rouse, and E. C. Butcher. 1988b. Immunohistologic and functional characterization of a vascular addressin involved in lymphocyte homing into peripheral lymph nodes. *J. Cell Biol.* 107:1853-1862.
- Woodruff, J. J., L. M. Clarke, and Y. H. Chin. 1987. Specific cell-adhesion mechanisms determining migration pathways of recirculating lymphocytes. *Annu. Rev. Immunol.* 5:201-222.
- Yednock, T. A., E. C. Butcher, L. M. Stoolman, and S. D. Rosen. 1987a. Receptors involved in lymphocyte homing: relationship between a carbohydrate-binding receptor and the MEL-14 antigen. *J. Cell Biol.* 104:725-731.
- Yednock, T. A., L. M. Stoolman, and S. D. Rosen. 1987b. Phosphomannosyl-derivatized beads detect a receptor involved in lymphocyte homing. *J. Cell Biol.* 104:713-723.
- Yednock, T. A., and S. D. Rosen. 1989. Lymphocyte homing. *Adv. Immunol.* 44:313-378.