

## Inhibition of Adhesive Activity of K88 Fibrillae by Peptides Derived from the K88 Adhesin

ANTON A. C. JACOBS,<sup>1\*</sup> JAAP VENEMA,<sup>1</sup> RONALD LEEVEN,<sup>1</sup> HILDE VAN PELT-HEERSCHAP,<sup>2</sup>  
AND FRITS K. DE GRAAF<sup>1</sup>

*Department of Microbiology, Biological Laboratory, Vrije Universiteit, 1081 HV Amsterdam,<sup>1</sup> and Biochemical Laboratory, Rijks Universiteit Leiden, 2333 AL Leiden,<sup>2</sup> The Netherlands*

Received 24 April 1986/Accepted 27 October 1986

A cyanogen bromide fragment derived from the K88ab adhesin inhibited the hemagglutinating activity of K88 fibrillae. Smaller fragments which inhibited the adherence of K88 fibrillae to erythrocytes or to intestinal epithelial cells were obtained by digestion of K88ab fibrillae with  $\alpha$ -chymotrypsin. Active peptides were isolated from the digestion mixture and identified as Ser-Leu-Phe and Ala-Ile-Phe. Both tripeptides correspond to the peptide stretches Ser-148-Leu-Phe-150 and Ala-156-Ile-Phe-158, respectively, which are part of conserved regions in the primary structure of the K88 variants ab, ac, and ad. The isolated tripeptides inhibited the hemagglutinating activity of purified K88 fibrillae in the 1 to 5  $\mu$ M range, while adherence of the fibrillae to intestinal epithelial cell brush borders was inhibited in the 10 to 50  $\mu$ M range. Furthermore, the tripeptides were capable of eluting attached bacteria from agglutinated erythrocytes. The inhibitory activity of the isolated peptides was confirmed by testing various synthetic peptides for their ability to inhibit the interaction of the different K88 variants with various species of erythrocytes. The significance of these findings for the localization of the receptor-binding domain is discussed.

K88 fibrillae are nonflagellar, filamentous adhesins found on many enterotoxigenic *Escherichia coli* strains that cause neonatal diarrhea in pigs (4). They enable the bacteria to colonize the small intestinal epithelium, which is considered to be a prerequisite for the establishment of diarrheal disease. The K88 fibrillae consist of multimers of the K88 adhesin subunit with a molecular weight of 27,500 (4). Three serological variants of K88 fibrillae have been described and designated K88ab, K88ac, and K88ad (7). The primary structure of all three proteins has been determined, showing both conserved and variable regions (5, 6, 12). The conserved regions are supposed to be involved in common features such as subunit-subunit interaction and receptor binding, while the variable regions might have evolved to evade the immune response of the host (16).

The receptor-binding domain of the K88 fibrillae and the corresponding ligand(s) on susceptible erythrocytes and pig epithelial cell brush borders are not known. Recent biochemical studies indicated a possible role for arginine residues in the receptor-binding domain of the K88 adhesin, but the positions of the modified residues in the primary structure are not identified (10).

To localize the receptor-binding site(s) on the fibrillar adhesin, we isolated cyanogen bromide and  $\alpha$ -chymotryptic fragments which were able to inhibit the interaction between native K88 fibrillae and their receptors on erythrocytes and epithelial cell brush borders.

### MATERIALS AND METHODS

**Materials.** Acetonitrile and HCl (supra pur) were purchased from E. Merck AG (Darmstadt, Federal Republic of Germany); CNBr and trifluoroacetic acid were from Janssen Chimica; carboxypeptidase Y and aminopeptidase M were from Boehringer GmbH (Mannheim, Federal Republic of

Germany); and  $\alpha$ -chymotrypsin and *ortho*-phenylenediamine were obtained from Sigma Chemical Co. (St. Louis, Mo.). All other reagents were of analytical grade.

**Purification of fibrillae.** K88ab, K88ac, K88ad, F41, and K99 fibrillae were isolated and purified as described previously (10).

**Isolation of brush borders.** Brush borders were prepared from the pig intestine as described by Middeldorp and Witholt (15) and stored in 50% glycerol at  $-20^{\circ}\text{C}$ .

**Hemagglutination inhibition test.** Suspensions of washed erythrocytes (2%) in PBSM (50 mM sodium phosphate [pH 7.3] containing 0.9% NaCl and 0.5% mannose) were mixed 1:1 with various amounts of peptide fractions in the same buffer. Subsequently, 50- $\mu$ l portions of these suspensions were added to serial twofold dilutions (50  $\mu$ l) of purified fibrillae in PBSM, using polystyrene microtiter trays with V-shaped cups. After 2 h of incubation at  $4^{\circ}\text{C}$ , the trays were examined. The initial concentrations of K88ab, -ac, and -ad fibrillae used were 50, 500, and 25  $\mu$ g/ml, respectively. These suspensions have a hemagglutination titer of  $2^{10}$  in the control experiments.

**Brush border-binding inhibition test.** An enzyme-linked immunosorbent assay was used to determine the inhibitory activity of peptides on the interaction between fibrillae and their receptors on epithelial cell brush borders. Polystyrene microtiter wells (Cooke) were coated with 100  $\mu$ l of a brush border suspension (diluted in phosphate-buffered saline) that gave a final absorption of 1.5 at 492 nm in the control experiments. After overnight incubation at  $37^{\circ}\text{C}$ , the wells were washed in running tap water and filled with serial twofold dilutions (50  $\mu$ l) of the peptide fractions in BST (50 mM sodium phosphate [pH 7.3] containing 0.2% bovine serum albumin and 0.01% Tween 80). Subsequently, 50  $\mu$ l of a solution of fibrillae in BST (0.25  $\mu$ g/ml) was added to each well. After 2 h of incubation at  $37^{\circ}\text{C}$  and subsequent washing, the bound fibrillae were quantitated colorimetrically with anti-K88 immunoglobulin G conjugated to horseradish

\* Corresponding author.

TABLE 1. Amino acid composition of the inhibitory cyanogen bromide fragment isolated from K88ab fibrillae<sup>a</sup>

Amino acid	Calculated from amino acid analysis	Theoretical value for AA-114 to AA-217 <sup>b</sup>	Theoretical value for AA-3 to AA-113
Asx	10.5	10	16
Thr	7.7	8	13
Ser	10.1	11	4
Glx	6.4	6	6
Pro	0.3	0	4
Gly	15.3	15	18
Ala	14.2	14	6
Val	9.1	9	8
Met	0.1	1	1
Ile	4.3	4	6
Leu	8.8	9	9
Tyr	2.9	3	3
Phe	5.0	5	5
Lys	4.1	4	7
Arg	5.2	5	3
Trp	ND <sup>c</sup>	0	2

<sup>a</sup> Data were normalized assuming 104 nmol of residues for the active cyanogen bromide fragment. The K88ab adhesin contains no cysteine residues, and tryptophan was not determined. The amino acid compositions of two different theoretical cyanogen bromide fragments as deduced from DNA sequence of the K88ab adhesin gene are shown for comparison.

<sup>b</sup> AA, Amino acid.

<sup>c</sup> ND, Not determined.

peroxidase and *ortho*-phenylenediamine as the substrate. The A<sub>492</sub> was determined with a Titertek Multiscan micro-ELISA reader (Organon Teknika).

**Cyanogen bromide cleavage.** Chemical cleavage of the K88 protein at methionine residues was performed in 70% trifluoroacetic acid with a molar excess of 250:1 cyanogen bromide over methionine. After 18 h of incubation at room temperature in the dark, the mixture was diluted 10-fold and lyophilized.

**Purification of cyanogen bromide fragments.** The cyanogen bromide-treated lyophilized protein was dissolved in 10% acetic acid containing 6 M guanidine hydrochloride and consecutively dialyzed against 10% acetic acid containing 5, 4, and 3 M guanidine hydrochloride. Subsequently, the mixture was centrifuged to remove any precipitated material, and the soluble fraction was fractionated by high-pressure liquid chromatography (HPLC)-gel filtration with a TSK G-2000SW column. The material was eluted in 10% acetic acid containing 3 M guanidine hydrochloride at a flow rate of 0.6 ml/min. The eluate was monitored at 280 nm. Peak fractions were collected manually, dialyzed against PBSM, and stored at -18°C until further use.

**Enzymatic digestion.** Heat-denatured K88 fibrillae in 100 mM sodium phosphate (pH 8.0) were digested with  $\alpha$ -chymotrypsin (1% by weight per addition). Proteolysis was carried out for 16 h with a second addition of enzyme 3 h after the initial addition.

**Purification of  $\alpha$ -chymotryptic peptides.** The soluble  $\alpha$ -chymotryptic peptides were separated by reverse-phase HPLC on a Bio-Rad Hi-Pore RP-318 column equipped with an RP-300 guard column, using a microprocessor-controlled Gilson model 303 HPLC system. An increasing gradient of acetonitrile in 0.075% trifluoroacetic acid (pH 2.0) or an increasing gradient of acetonitrile in 5 mM sodium phosphate (pH 6.8) was used to elute the peptides. The A<sub>220</sub> was monitored to detect the peptides. Fractions of 1 ml or peak fractions were collected manually and lyophilized.

**Peptide synthesis.** Peptides were synthesized by the solid-

phase method (1). The composition of each peptide was confirmed by amino acid analysis.

**Polyacrylamide gel electrophoresis.** Sodium dodecyl sulfate-polyacrylamide gel electrophoresis in 10 to 18% linear gradient gels containing 7 M urea (with an acrylamide-bisacrylamide ratio of 20:1) and sample preparations were performed as described by Hashimoto et al. (9).

**Amino acid analysis.** Samples were hydrolyzed in 6 M HCl (supra pur) at 105°C for 24 h under nitrogen. Analyses were performed on a Beckman 119 CL automatic amino acid analyzer.

**N- and C-terminal amino acid sequence determination.** About 5 nmol of purified peptide in 20 mM sodium phosphate (pH 6.8) was incubated with aminopeptidase M (2%, wt/wt) or with carboxypeptidase Y (5%, wt/wt) at room temperature for various incubation times. The reaction was stopped by freezing the solution in liquid nitrogen. After lyophilization the amino acids were determined by HPLC as described by Ebberink et al. (2).

## RESULTS

**Cyanogen bromide fragments of K88ab fibrillae.** To determine the location of the receptor-binding domain on the K88 fibrillar adhesin, protein fragments resulting from the cyanogen bromide cleavage of K88ab fibrillae were fractionated by HPLC-gel filtration and tested for their ability to inhibit the interaction between native K88ab fibrillae and cavia erythrocytes. For this purpose, peak fractions were dialyzed into 50 mM sodium phosphate (pH 7.3) containing 0.9% NaCl and 0.5% D-mannose. After dialysis the fractions were boiled to resuspend precipitated material. None of the fractions exhibited hemagglutinating activity, but one fraction was able to inhibit the interaction between intact K88ab fibrillae and cavia erythrocytes. Upon sodium dodecyl sulfate-gel electrophoresis this fraction resolved as one major protein band with an apparent molecular weight of 10,000 (data not shown). Amino acid analysis showed an amino acid composition corresponding to the peptide stretch Lys-114-Met-217 in the primary structure of the K88ab adhesin (Table 1). The lowest concentration of this fragment which still inhibited the hemagglutinating activity of native K88ab fibrillae by more than 95% was 0.4 mM. The hemagglutination of cavia or horse erythrocytes by F41 fibrillae and of horse erythrocytes by K99 fibrillae was not inhibited by this fragment.

**Purification and sequencing of  $\alpha$ -chymotryptic peptides derived from K88ab fibrillae.** To investigate whether smaller fragments could also inhibit the hemagglutinating activity of the K88ab fibrillae, the large cyanogen bromide fragment was digested with  $\alpha$ -chymotrypsin. This digestion resulted in a 500-fold increase in hemagglutination-inhibiting activity. To isolate and purify the active peptides, heat-denatured K88ab fibrillae were digested with  $\alpha$ -chymotrypsin, and the resulting peptides were separated by reverse-phase HPLC with an increasing gradient of acetonitrile in 0.075% trifluoroacetic acid (pH 2.0) (Fig. 1). Fractions (1 ml) were collected, lyophilized, and tested for hemagglutination-inhibiting activity. Only fractions 23 and 24 inhibited the interaction between native K88ab fibrillae and cavia erythrocytes. Both fractions were pooled and subjected to a second chromatography on the same column, using an increasing gradient of acetonitrile in 5 mM sodium phosphate (pH 6.8) to elute the peptides. At neutral pH the combined fractions 23 and 24 eluted as seven major peaks (Fig. 2). The peak fractions were collected, lyophilized, and tested for

hemagglutination-inhibiting activity. The material in peaks 5 and 6 appeared to inhibit the hemagglutinating activity of K88ab fibrillae with cavia erythrocytes. Amino acid analysis of the peptide fractions 5 and 6 revealed equimolar concentrations of Ala, Ile, Phe and Ser, Leu, Phe, respectively. The amino acid composition of peptide fraction 6 corresponds to the peptide stretch Ser-148–Leu–Phe-150 in the primary structure of the K88ab adhesin, while peptide fraction 5 could correspond to either the sequence Ile-83–Ala–Phe-85 or the sequence Ala-156–Ile–Phe-158 (Fig. 3). After 1 h of incubation with carboxypeptidase Y, the inhibitory activity of both peptide fractions disappeared, and Phe was the only amino acid released. After 5 min of incubation of peptide fractions 5 and 6 with aminopeptidase M, the only amino acids detectable were Ala and Ser, respectively. Thereafter, equimolar concentrations of Ile and Phe or of Leu and Phe were found in addition to Ala and Ser. Thus, the sequence of the peptides in fraction 5 and 6 could be established as Ala-156–Ile–Phe-158 and Ser-148–Leu–Phe-150, respectively. Both peptides are contained in the sequence of the active cyanogen bromide fragment from Lys-114 to Met-217 (Fig. 3). Furthermore, both peptides are conserved in all three K88 variants. The lowest concentrations of Ser-Leu-Phe and Ala-Ile-Phe which still inhibited the interaction between native K88ab and cavia erythrocytes by more than 95% were 1.5 and 0.5  $\mu\text{M}$ , respectively. Based on the concentration of adhesin molecules used in the hemagglutination inhibition test, it can be calculated that 0.5  $\mu\text{M}$  Ala-Ile-Phe or 1.5  $\mu\text{M}$  Ser-Leu-Phe was required to block the hemagglutinating activity of 0.5  $\mu\text{M}$  adhesin, respectively. Apparently, both tripeptides possess a high affinity for the K88ab receptors on cavia erythrocytes. A twofold-higher concentration of the respective peptides abolished the hemagglutinating activity of 10  $\mu\text{M}$  adhesin, indicating that hemagglutination inhibition is a saturable process.

To test for the binding of the peptides to erythrocytes, an equal volume of a solution of 8  $\mu\text{M}$  Ser-Leu-Phe or 2  $\mu\text{M}$  Ala-Ile-Phe was mixed with a 50% suspension of cavia or horse erythrocytes and incubated for 2 h at 4°C. Subsequently, the erythrocytes were spun down, and the hemagglutination-inhibiting activity in the supernatant was determined. Incubation with cavia erythrocytes reduced the hemagglutination-inhibiting activity of the peptide solutions

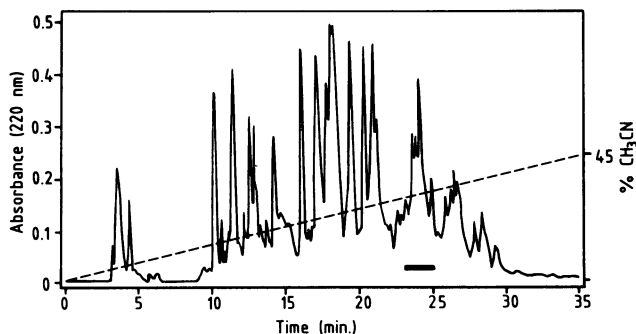


FIG. 1. Elution profile of an  $\alpha$ -chymotryptic digest of K88ab fibrillae on reverse-phase HPLC. The peptide mixture was separated on an RP-318 column by using an increasing gradient of acetonitrile in 0.075% trifluoroacetic acid (pH 2.0) and a flow rate of 1 ml/min. The absorbance of the effluent was monitored at 220 nm. Fractions (1 ml) were collected manually, lyophilized, and tested for hemagglutination-inhibiting activity. The inhibitory fractions are indicated by a bar.

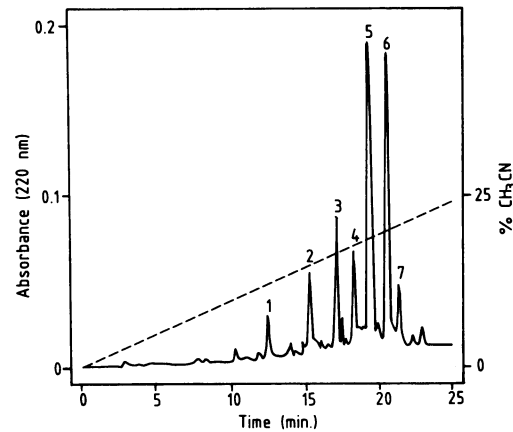


FIG. 2. Elution profile of the pooled inhibitory fractions, as indicated in Fig. 1, by reverse-phase HPLC. The peptides were separated on an RP-318 column by using an increasing gradient of acetonitrile in 5 mM sodium phosphate (pH 6.8) and a flow rate of 1 ml/min. The absorbance was monitored at 220 nm.

by more than 95%, while incubation with horse erythrocytes had no effect.

**Peptides derived from K88ac and K88ad fibrillae.** The digestion of both K88ac and K88ad fibrillae with  $\alpha$ -chymotrypsin yielded one chymotryptic peptide that possessed hemagglutination-inhibiting activity. Amino acid analysis of the K88ac-derived peptide revealed the presence of Ala, Ile, and Phe in equimolar concentrations. This peptide isolated from K88ac was about 10 times less inhibitory than the peptide Ala-Ile-Phe isolated from K88ab. Theoretically, this peptide could correspond to the peptide stretch Ile-85–Ala–Phe-87 or to Ala-156–Ile–Phe-158 in the primary structure of the K88ac adhesin. Amino acid analysis of the K88ad-derived peptide showed equimolar concentrations of Ser, Leu, and Phe, corresponding to the peptide stretch Ser-148–Leu–Phe-150 in the primary structure of the K88ad adhesin. Apparently, digestion of the various types of K88 fibrillae with  $\alpha$ -chymotrypsin resulted in the generation of a number of different tripeptides that possessed a very efficient hemagglutination-inhibiting activity. The amino acid composition of all isolated tripeptides corresponded to conserved peptide stretches in the primary structure of the various K88 adhesins.

**Synthetic peptides.** To confirm the activity of the isolated peptides, the tripeptides Ile-Ala-Phe, Ser-Leu-Phe, and Ala-Ile-Phe were chemically synthesized and tested for their ability to inhibit the interaction between the three K88 variants and their receptors on cavia, chicken, and pig erythrocytes (Table 2). K88ab agglutinated both cavia and chicken erythrocytes (50  $\mu\text{g}/\text{ml}$  gave a titer of  $2^{10}$  with both types of erythrocytes). K88ac only agglutinated cavia erythrocytes (a concentration of 500  $\mu\text{g}/\text{ml}$  gave a titer of  $2^{10}$ ), and K88ad agglutinated both cavia and pig erythrocytes (25  $\mu\text{g}/\text{ml}$  gave a titer of  $2^{10}$  with both types of erythrocytes). The synthetic peptides Ser-Leu-Phe and Ala-Ile-Phe inhibited hemagglutinating activity at concentrations similar to those of the corresponding peptides isolated from the fibrillae. With respect to hemagglutination inhibition of K88ab and K88ac, Ala-Ile-Phe was three to five times as active as Ser-Leu-Phe and 10 to 30 times more active than Ile-Ala-Phe. K88ad was poorly inhibited when compared with K88ab and K88ac.

All active tripeptides possessed a phenylalanine residue at

	1		5		10		15		20		25															
K88ab	Trp	Met	Thr	Gly	Asp	Phe	Asn	Gly	Ser	Val	Asp	Ile	Gly	Gly	Ser	Ile	Thr	Ala	Asp	Asp	Tyr	Arg	Gln	Lys	Trp	
K88ac																										
K88ad																										
				30				35				40				45							50			
K88ab	Glu	Trp	Lys	Val	Gly	Thr	Gly	Leu	Asn	Gly	Phe	Gly	Asn	Val	Leu	Asn	Asp	Leu	Thr	Asn	Gly	Gly	Thr	Lys	Leu	
K88ac																										
K88ad												Ser											Glu			
				55				60				65			70								75			
K88ab	Thr	Ile	Thr	Val	Thr	Gly	Asn	Lys	Pro	Ile	Leu	Leu	Gly	Arg	Thr	Lys	Glu	Ala	Phe	Ala	Thr	Pro	Val	Ser	Gly	
K88ac																								Thr		
K88ad									Ser					Arg										Val		
				80				85				90			95								100			
K88ab	Gly	Val	Asp	Gly	Ile	Pro	Gln	<u>Ile</u>	<u>Ala</u>	<u>Phe</u>	Thr	Asp	Tyr	Glu	Gly	Ala	Ser	Val	Lys	Leu	Arg	Asn	Thr	Asp	Gly	
K88ac							His												Val				Pro			
K88ad							His												Glu				Pro			
				105				110				115			120								125			
K88ab	Glu	Thr	Asn	Lys	---	Gly	Leu	Ala	Tyr	Phe	Val	Leu	Pro	Met	Lys	Asn	Ala	Glu	Gly	Thr	Lys	Val	Gly	Ser	Val	Lys
K88ac				Lys																						
K88ad		Ile	Glu																							
				130				135				140			145								150			
K88ab	Val	Asn	Ala	Ser	Tyr	Ala	Gly	Val	Phe	Gly	Lys	Gly	Gly	Val	Thr	Ser	Ala	Asp	Gly	Glu	Leu	Phe	<u>Ser</u>	<u>Leu</u>	<u>Phe</u>	
K88ac								Leu		Arg													Leu			
K88ad							Ala	Leu		Arg													Met			
				155				160				165			170								175			
K88ab	Ala	Asp	Gly	Leu	Arg	<u>Ala</u>	<u>Ile</u>	<u>Phe</u>	Tyr	Gly	Gly	Leu	Thr	Thr	Thr	Val	Ser	Gly	Ala	Ala	Leu	Thr	Ser	Gly	Ser	
K88ac					Ser								Pro	Arg	---	---	---		Ser	Glu	Ser	Ser	Ala			
K88ad		Glu		Ser	His								Pro	Asn		Gln	Asn	Ser				Pro	Gly			
				180				185				190			195								200			
K88ab	Ala	Ala	Ala	Ala	Arg	Thr	Glu	Leu	Phe	Gly	Ser	Leu	Ser	Arg	Asn	Asp	Ile	Leu	Gly	Gln	Ile	Gln	Arg	Val	Asn	
K88ac							Lys																			
K88ad													Lys													
				205				210				215			220								225			
K88ab	Ala	Asn	Ile	Thr	Ser	Leu	Val	Asp	Val	Ala	Gly	Ser	Tyr	Arg	Glu	Asp	Met	Glu	Tyr	Thr	Asp	Gly	Thr	Val	Val	
K88ac																Asn										
K88ad							Asn		Pro				Phe	Asn		Asn		Ala					Ser			
				230				235				240			245								250			
K88ab	Ser	Ala	Ala	Tyr	Ala	Leu	Gly	Ile	Ala	Asn	Gly	Gln	Thr	Ile	Glu	Ala	Thr	Phe	Asn	Gln	Ala	Val	Thr	Thr	Ser	
K88ac																										
K88ad		Val											Arg													
				255				260																		
K88ab	Thr	Gln	Trp	Ser	Ala	Pro	Leu	Asn	Val	Ala	Ile	Thr	Tyr	Tyr												
K88ac																										
K88ad																										

FIG. 3. Primary structures of the K88ab, K88ac, and K88ad subunits (5, 6, 12). The K88ac and K88ad sequences are the same as shown for K88ab except where indicated. Numbering refers to the K88ab sequence. Amino acid sequences corresponding to the amino acid composition of isolated active peptides are underlined.

their carboxy-terminal end. The relevance of phenylalanine at this particular position with respect to the hemagglutination-inhibiting activity was tested with two other synthetic peptides: Ser-Leu-Phe-Ala and Leu-Phe-Ala (Ala-152 is conserved in all three variants). The tetrapeptide was about 40 times less inhibitory than Ser-Leu-Phe. The tripeptide Leu-Phe-Ala had no activity at all except for K88ac for which it was as active as the tetrapeptide.

Hemagglutination inhibition experiments with whole cells of K88-positive *E. coli* gave results comparable to those found for purified fibrillae. The hemagglutination of cavia and horse erythrocytes by F41 and of horse erythrocytes by K99 was not inhibited by the synthetic peptides.

**Reversibility of the hemagglutination reaction.** The addition of small amounts of peptides to a suspension of agglutinated

erythrocytes resulted in an elution of the fibrillae from the erythrocytes. The clumps dispersed, and the erythrocytes formed a pit at the bottom of the microtiter tray within 5 to 10 min. Peptide concentrations were comparable to those used in the hemagglutination inhibition test.

**Inhibition of binding to epithelial cell brush borders.** The nature of the K88ab, -ac, and -ad receptor(s) on erythrocytes and epithelial cells is unknown. Theoretically, small structural differences might exist between the receptors on both types of eucaryotic cells. Therefore, we tested the ability of the peptides to inhibit the interaction between K88ab fibrillae and their receptors on the epithelial cell brush borders (Fig. 4). All three peptides tested showed a saturable inhibition. Again Ala-Ile-Phe was the most potent inhibitor; 50% inhibition occurred at a concentration of 15  $\mu$ M. Ser-

Leu-Phe and Ile-Ala-Phe gave 50% inhibition at concentrations of 40 and 260  $\mu$ M, respectively.

### DISCUSSION

Attachment of pathogenic *E. coli* cells to epithelial cells of the intestinal or the urinary tract is mediated by specific adhesins present on the bacterial cell surface. In general, different types of bacterial fimbriae have been identified as the carriers of this adhesive capacity. Recent genetic evidence obtained with Pap, type 1, and X fimbriae suggests that although these fimbriae function as carriers of adhesiveness, the adhesive capacity is not represented by the major fimbrial subunit but by specific adhesin molecules which constitute a minor component of the respective fimbriae (8, 13, 14, 18). The major fimbrial subunits and the adhesin molecules are encoded by different cistrons in the respective operons. The genetic organization of the K88 determinant is, in principle, comparable to the operons encoding Pap, type 1, or X fimbriae, but in this case, the gene encoding the fimbrial subunits is expressed at a very low level, while the gene encoding the adhesive protein is expressed at a high level, and purified K88 fibrillae consist of adhesin molecules as major component (17). Therefore, K88 fibrillae are very suitable structures with which to study structure-function relationships *in vitro*.

In searching for the location of the receptor-binding domain on the K88 adhesin, we investigated the inhibitory activity of adhesin fragments on hemagglutination and binding of K88 fibrillae to intestinal epithelial cells. Three tripeptide fragments derived from conserved sequences in the primary structure of the different K88 variants were found to possess adhesion-inhibiting activity. A larger cyanogen bromide fragment containing the active tripeptide fragments Ser-Leu-Phe and Ala-Ile-Phe showed much less inhibitory activity, probably owing to its poor solubility or to a less favorable conformation of the receptor-binding site, or both.

It should be mentioned that any possibility that the isolated tripeptides are derived from the fimbrial subunit instead of the K88 adhesin could be excluded because (i) the yield of tripeptide isolated from K88 fibrillae is far too high to be derived from fimbrial subunits which represent a minor component of K88 fibrillae, and (ii) no such tripeptide sequences occur in the primary structure of the fimbrial subunits (unpublished data).

The possibility of isolating the various active tripeptides by digestion of the different K88 variants with  $\alpha$ -chymo-

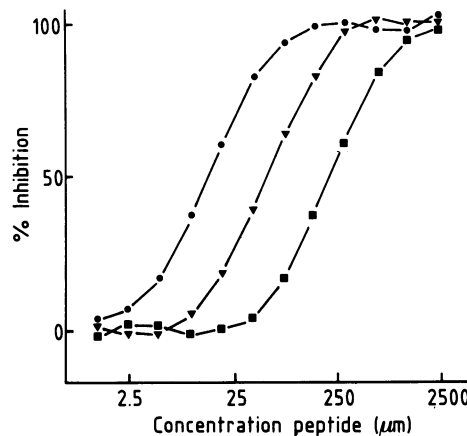


FIG. 4. Inhibitory activity of various peptides on the interaction between native K88ab fibrillae and their receptors on epithelial cell brush borders. The test was performed as described in Materials and Methods. The inhibitory activities of Ile-Ala-Phe (■), Ser-Leu-Phe (▼), and Ala-Ile-Phe (●) are presented graphically as percent inhibition versus peptide concentration.

trypsin depends on the specificity of the chymotrypsin-induced hydrolysis. Digestion of K88ad fibrillae, for instance, resulted in the isolation of only one active tripeptide composed of equimolar concentrations of Ser, Leu, and Phe and corresponding to the sequence Ser-148-Leu-Phe-150 in the primary structure of the K88ad adhesin. Digestion of K88ac fibrillae resulted in the isolation of an active tripeptide composed of equimolar amounts of Ala, Ile, and Phe. The inhibitory activity of this tripeptide was about 10 times less than observed with the tripeptide Ala-Ile-Phe but was comparable to the activity of the synthetic tripeptide Ile-Ala-Phe. Therefore, we presume that the K88ac-derived tripeptide corresponds to the sequence Ile-83-Ala-Phe-85 in the primary structure of the K88ac adhesin. Apparently, larger chymotryptic fragments containing the isolated tripeptides possess no significant inhibitory activity. Comparable results were obtained by trypsinolytic digestion of the various K88 fibrillae. These digestion mixtures possessed a detectable but rather weak inhibitory activity on the hemagglutination of cavia erythrocytes (data not shown). In addition, it should be noted that  $\alpha$ -chymotrypsin might hydrolyze the various fibrillar adhesins within the sequence of other possible inhibitory peptide fragments. All isolated active peptides, however, possess a carboxyl-terminal phenylalanine residue possibly indicating an essential common feature of inhibiting peptide fragments.

Inhibition of adherence appeared to be a saturable process as observed in the hemagglutination and epithelial cell brush border binding test. The specificity of this process was shown by the observation that incubation with cavia erythrocytes significantly reduced the amount of peptides in solution, whereas incubation with horse erythrocytes did not. Furthermore, the hemagglutination reaction was shown to be reversible since addition of small amounts of the tripeptides eluted the fibrillae from the erythrocytes.

Although the K88 fibrillar adhesins were shown to contain small conserved amino acid sequences which appeared to be recognized by the K88 receptors present on eucaryotic cells, the question remains whether one or more of these sequences possess the same activity when contained within the intact fibrillar adhesin, i.e., constitute an essential part of the receptor-binding domain. In all three K88 variants the se-

TABLE 2. Hemagglutination inhibition by synthetic peptides<sup>a</sup>

K88 variant	Erythrocytes	Synthetic peptide ( $\mu$ M)				
		SLF	AIF	IAF	SLFA	LFA
ab	Cavia	2	0.4	15	80	>400
ab	Chicken	2	1.0	15	150	>400
ac	Cavia	2	0.8	8	80	80
ad	Cavia	100	100	200	400	>400
ad	Pig	>400	>400	>400	>400	>400

<sup>a</sup> The ability of various synthetic peptides to inhibit the interaction between K88ab, -ac, and -ad fibrillae and their receptors on cavia, chicken, and pig erythrocytes was tested as described in Materials and Methods. The lowest concentrations of the peptides that reduced the hemagglutination titer of native fibrillae from  $2^{10}$  to  $2^2$  (more than 95% inhibition) are shown in the table. No significant residual hemagglutination was detectable with twofold-higher concentrations of the peptides. K88ab did not agglutinate pig erythrocytes, K88ac did not agglutinate chicken and pig erythrocytes, and K88ad did not agglutinate chicken erythrocytes. The peptides are given in the single-letter code.

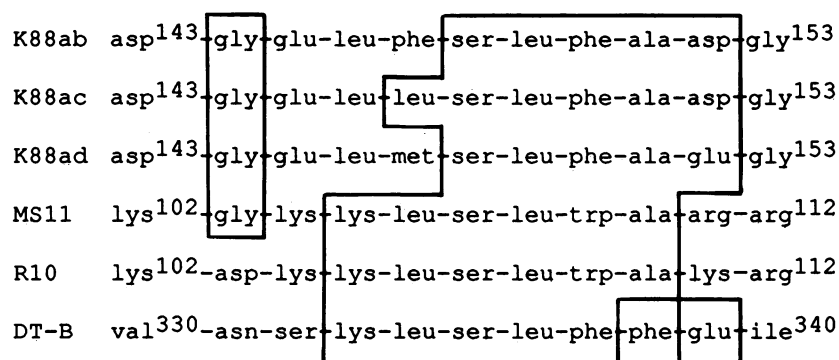


FIG. 5. Comparison of a part of the primary structure of six lectins: K88ab, K88ac, and K88ad adhesin (5, 6, 12), gonococcal MS11 and R10 fimbrial subunits (20), and fragment B of diphtheria toxin (3). Identical or functionally identical residues are boxed. The amino acids Trp, Phe and Asp, Glu were assumed to be functionally identical. Homologous residues which occur only in the K88 or gonococcal variants are not considered.

quence Ser-Leu-Phe is followed by Ala-151. The tetrapeptide Ser-Leu-Phe-Ala was about 40 times less inhibitory than the tripeptide. This observation might be explained by a decreased flexibility of the aromatic phenylalanine residue in the tetrapeptide. The tripeptide Leu-Phe-Ala had no inhibitory effect on the hemagglutinating activity of the K88ab and -ad fibrillae but inhibited the activity of K88ac at the same concentrations as Ser-Leu-Phe-Ala. Thus, the serine residue seems to be critical for K88ab and -ad, but not for K88ac. These results might be explained by small differences in the receptor molecules or by differences in the three-dimensional folding of the receptor-binding domain. In general, the results suggest that the receptor binding event, at least in part, involves a hydrophobic interaction between particular sites on the K88 adhesin and the receptors on epithelial cell brush borders or erythrocytes. The receptor-binding domain of the K88 variants could be a hydrophobic cleft in the molecule which encompasses the conserved amino acid sequences Ser-148-Leu-Phe-150 or Ala-156-Ile-Phe-158 or both and which is complementary to the ligand molecules. The surrounding variable amino acid sequences in the three K88 variants might be responsible for the observed differences in hemagglutination spectrum and activity, implicating that the receptor-binding domain of the K88 adhesin encompasses (in part) the variable sequences of the respective adhesin. In addition, the relatively high concentrations of tripeptide required to inhibit the hemagglutinating activity of K88ad fibrillae suggests that differences in receptor molecules exist in particular between the receptors for K88ad and for K88ab or -ac.

Recent biochemical studies showed that modification of two arginine residues on an average of one adhesin molecule results in the loss of hemagglutinating activity of the K88ab fibrillae (11). This indicates that besides hydrophobic amino acid side chains charged residues also contribute to receptor binding. However, in the present study we cannot attribute a function of arginine residues in the receptor binding event. It remains to be investigated whether arginine residues are directly involved in the subunit-receptor interaction or are essential for the proper conformation of the receptor-binding domain.

Comparison of the primary structure of the K88ab, K88ac, and K88ad fibrillar adhesins with the primary structure of the fimbrial subunits of several other fimbriae or bacterial toxins that bind to eucaryotic cells (Fig. 5) revealed a segment of about 10 amino acid residues, encompassing the sequence Ser-Leu-Phe, which is fairly homologous with segments of

the gonococcal MS11 and R10 fimbrial subunits (20) and fragment B of diphtheria toxin (3). This homology suggests that this particular segment has a common function in these proteins, irrespective of the differences in binding specificity. Segment Lys-102-Arg-111 of the MS11 gonococcal fimbrial subunit is part of a larger fragment, Ala-31-Arg-111, derived from this subunit which was shown to bind to human endocervical epithelial cells (20). Furthermore, the segment Leu-106-Ser-Leu-Trp-Ala-110 is conserved among all gonococcal fimbrial subunit variants that have been analyzed (21). Segment Val-330-Ile-340 of the B fragment of diphtheria toxin is part of the C-terminal cyanogen bromide fragment Arg-267-Ser-342 derived from this protein, which was implicated in cell surface receptor binding (19). A common function for the homologous sequences was supported by preliminary experiments which have shown that diphtheria toxin is able to inhibit the agglutination of cavia erythrocytes by K88 fibrillae. Agglutination of human erythrocytes by *Neisseria gonorrhoea*, however, was not inhibited by the tripeptide Ser-Leu-Phe. This might be due to either the substitution of the phenylalanine residue for a tryptophan residue or the absence of additional sequences involved in the binding of gonococci to human erythrocytes.

Future experiments with other synthetic peptides, an analysis of the role of the amino- or carboxyl-terminal charges of the peptides, and the use of site-specific in vitro mutagenesis of various phenylalanine and arginine residues will be necessary to confirm the role of particular amino acid residues in receptor-binding activity.

#### ACKNOWLEDGMENTS

This investigation was supported by the Netherlands Foundation for Chemical Research (SON) with financial aid from the Netherlands Organization for the Advancement of Pure Research (ZWO).

#### LITERATURE CITED

1. Barany, G., and R. B. Merrifield. 1980. Solid phase peptide synthesis, p. 1-248. In E. Gross and J. Merenhofer (ed.), *The peptides*, vol. 2. Academic Press, Inc., New York.
2. Ebberink, R. H. M., H. van Loenhout, W. P. M. Gerearts, and J. Joosse. 1985. Purification and amino acid sequence of the ovulation neurohormone of *Lymnea stagnalis*. *Proc. Natl. Acad. Sci. USA* **82**:7767-7771.
3. Fallmagne, P., C. Capiiau, P. Lambotte, J. Zanen, V. Cabiliaux, and J. Ruyschaert. 1985. The complete amino acid sequence of diphtheria toxin fragment B. Correlation with its lipid-binding properties. *Biochim. Biophys. Acta* **827**:45-50.
4. Gaastra, W., and F. K. de Graaf. 1982. Host-specific fimbrial

- adhesins of noninvasive enterotoxigenic *Escherichia coli*. Microbiol. Rev. **46**:129-161.
5. Gaastra, W., P. Klemm, and F. K. de Graaf. 1983. The nucleotide sequence of the K88ad protein subunit of porcine enterotoxigenic *Escherichia coli*. FEMS Microbiol. Lett. **18**:177-183.
  6. Gaastra, W., F. R. Mooi, A. R. Stuitje, and F. K. de Graaf. 1981. The nucleotide sequence of the gene encoding the K88ab subunit of porcine enterotoxigenic *Escherichia coli*. FEMS Microbiol. Lett. **26**:15-19.
  7. Guinee, P. A. M., and W. H. Jansen. 1979. Behavior of *Escherichia coli* K antigens K88ab, K88ac, and K88ad in immunoelectrophoresis, double diffusion, and hemagglutination. Infect. Immun. **23**:700-705.
  8. Hacker, J., G. Schmidt, C. Hughes, S. Knapp, M. Marget, and W. Goebel. 1985. Cloning and characterization of genes involved in production of mannose-resistant, neuraminidase-susceptible (X) fimbriae from a uropathogenic O6:K15:H31 *Escherichia coli* strain. Infect. Immun. **47**:434-440.
  9. Hashimoto, F., T. Horigomf, M. Kanbayashi, K. Yoshida, and H. Sugano. 1983. An improved method for separation of low-molecular-weight polypeptides by electrophoresis in sodium dodecyl sulfate-polyacrylamide gel. Anal. Biochem. **129**:192-199.
  10. Jacobs, A. A. C., and F. K. de Graaf. 1985. Production of K88, K99, and F41 fibrillae in relation to growth phase, and a rapid procedure for adhesin purification. FEMS Microbiol. Lett. **26**:15-19.
  11. Jacobs, A. A. C., J. R. van Mechelen, and F. K. de Graaf. 1985. Effect of chemical modifications on the K99 and K88ab fibrillar adhesins of *Escherichia coli*. Biochim. Biophys. Acta **832**:148-155.
  12. Josephsen, J., F. Hansen, F. K. de Graaf, and W. Gaastra. 1984. The nucleotide sequence of the protein subunit of the K88ac fimbriae of porcine enterotoxigenic *Escherichia coli*. FEMS Microbiol. Lett. **25**:301-306.
  13. Lindberg, F. P., B. Lund, and S. Normark. 1984. Genes of pyelonephritogenic *E. coli* required for digalactoside-specific agglutination of human cells. EMBO J. **3**:1167-1173.
  14. Maurer, L., and P. E. Orndorff. 1985. A new locus, *pilE*, required for the binding of type 1 piliated *Escherichia coli* to erythrocytes. FEMS Microbiol. Lett. **30**:59-66.
  15. Middeldorp, J. M., and B. Witholt. 1981. K88-mediated binding of *Escherichia coli* outer membrane fragments to porcine intestinal epithelial cell brush borders. Infect. Immun. **31**:42-51.
  16. Mooi, F. R., and F. K. de Graaf. 1985. Molecular biology of fimbriae of enterotoxigenic *Escherichia coli*. Curr. Top. Microbiol. Immunol. **118**:119-138.
  17. Mooi, F. R., M. van Buuren, G. Koopman, B. Roosendaal, and F. K. de Graaf. 1984. A K88ab gene of *Escherichia coli* encodes a fimbria-like protein distinct from the K88ab fimbrial adhesin. J. Bacteriol. **159**:482-487.
  18. Norgren, M., S. Normark, D. Lark, P. O'Hanley, G. Schoolnik, S. Falkow, C. Svanborg-Edén, M. Baga, and B. E. Uhlin. 1984. Mutations in *E. coli* cistrons affecting adhesion to human cells do not abolish Pap pili fiber formation. EMBO J. **3**:1159-1165.
  19. Proia, R. L., S. K. Wray, D. A. Hart, and L. Eidels. 1980. Characterization and affinity labeling of the cationic phosphate-binding (nucleotide-binding) peptide located in the receptor-binding region of the B-fragment of diphtheria toxin. J. Biol. Chem. **255**:12025-12033.
  20. Schoolnik, G. K., R. Fernandez, J. Y. Tai, J. Rothbard, and E. C. Gotschlich. 1984. Gonococcal pili: primary structure and receptor-binding domain. J. Exp. Med. **159**:1351-1370.
  21. Sparling, P. F., J. G. Cannon, and M. So. 1986. Phase and antigenic variation of pili and outer membrane protein II of *Neisseria gonorrhoeae*. J. Infect. Dis. **153**:196-201.