

# Integrin Cytoplasmic Domains Mediate Inside-Out Signal Transduction

Timothy E. O'Toole, Yasuhiro Katagiri, Randall J. Faull, Karlheinz Peter, Richard Tamura,<sup>‡</sup> Vito Quaranta,<sup>‡</sup> Joseph C. Loftus, Sanford J. Shattil,<sup>§</sup> and Mark H. Ginsberg

\*Departments of Vascular Biology and <sup>‡</sup>Cell Biology, Scripps Research Institute, La Jolla, California 92037; and <sup>§</sup>University of Pennsylvania, Philadelphia, Pennsylvania 19104

**Abstract.** We analyzed the binding of fibronectin to integrin  $\alpha_5\beta_1$  in various cells; in some cells fibronectin bound with low affinity (e.g., K562 cells) whereas in others (e.g., CHO), it bound with high affinity (Kd  $\sim$  100 nM) in an energy-dependent manner. We constructed chimeras of the extracellular and transmembrane domains of  $\alpha_{\text{mb}}\beta_3$  joined to the cytoplasmic domains of  $\alpha_5\beta_1$ . The affinity state of these chimeras was assessed by binding of fibrinogen or the monoclonal antibody, PAC1. The cytoplasmic domains of  $\alpha_5\beta_1$  conferred an energy-dependent high affinity state on  $\alpha_{\text{mb}}\beta_3$  in CHO but not K562 cells. Three additional  $\alpha$  cytoplasmic domains ( $\alpha_2$ ,  $\alpha_6A$ ,  $\alpha_6B$ ) conferred PAC1 binding in CHO cells, while three others ( $\alpha_M$ ,  $\alpha_L$ ,  $\alpha_V$ ) did not. In the high affinity  $\alpha$  chimeras, cotransfection

with a truncated ( $\beta_3\Delta 724$ ) or mutated ( $\beta_3(S^{752}\rightarrow P)$ )  $\beta_3$  subunit abolished high affinity binding. Thus, both cytoplasmic domains are required for energy-dependent, cell type-specific affinity modulation. In addition, mutations that disrupted a highly conserved  $\alpha$  subunit GFFKR motif, resulted in high affinity binding of ligands to  $\alpha_{\text{mb}}\beta_3$ . In contrast to the chimeras, the high affinity state of these mutants was independent of cellular metabolism, cell type, and the bulk of the  $\beta$  subunit cytoplasmic domain. Thus, integrin cytoplasmic domains mediate inside-out signaling. Furthermore, the highly conserved GFFKR motif of the  $\alpha$  subunit cytoplasmic domain maintains the default low affinity state.

**C**ELLS alter their adhesiveness in response to developmental events or environmental cues. These adaptations are often mediated through integrins, adhesion receptors composed of two transmembrane subunits,  $\alpha$  and  $\beta$  (43). Rapid changes in integrin function are critical in cell migration, cellular aggregation, and leukocyte transmigration during inflammation (2, 24, 31, 36, 43, 75, 86). A given integrin may also manifest varying adhesive competence depending on its cellular environment (15, 25, 49, 62, 94), or the state of differentiation of the cell (1, 15, 35, 66). Such variations in function may be due to changes in ligand-binding affinity as occurs with certain  $\beta_3$  (7),  $\beta_2$  (4), and  $\beta_1$  (26) integrins. Changes in adhesive function may also occur without changes in ligand-binding affinity. For example, phorbol esters stimulate the  $\alpha_5\beta_1$ -dependent adhesion of

CHO cells (20) to fibronectin (Fn)<sup>1</sup> with no change in Fn-binding affinity. Similarly, certain  $\beta_3$  mutations reduce  $\alpha_{\text{mb}}\beta_3$ -dependent stabilization of cell adhesion to fibrinogen (Fg) without changing intrinsic Fg-binding affinity (97). Such affinity-independent changes in integrin function are ascribed to "post receptor events" (20). Nevertheless, the host cell governs the capacity of solubilized  $\alpha_2\beta_1$  to bind to immobilized ligands (49). This last result suggests that some cell type-specific differences in integrin function may be due to differences in ligand-binding affinity.

$\alpha_{\text{mb}}\beta_3$  (platelet GPIIb-IIIa) is a prototype integrin for analysis of changes in integrin affinity. As with all integrins,  $\alpha_{\text{mb}}\beta_3$  is a heterodimer of two Type I transmembrane protein subunits (43).  $\alpha_{\text{mb}}\beta_3$  is platelet-specific (88), and affinity state-specific antibodies, e.g., PAC1 (81), simplify analysis of recombinant  $\alpha_{\text{mb}}\beta_3$  in heterologous cells (67). Conformational changes in the extracellular domain of  $\alpha_{\text{mb}}\beta_3$  regulate its affinity (67, 82). Platelet agonists increase the affinity of  $\alpha_{\text{mb}}\beta_3$  ("activation") via cytoplasmic signaling pathways. These pathways include heterotrimeric GTP-binding proteins, phospholipid metabolism, and serine-threonine kinases and may also involve calcium fluxes, tyrosine kinases,

Address all correspondence to Dr. T. E. O'Toole, Department of Vascular Biology, Scripps Research Institute, 10666 N. Torrey Pines, La Jolla, CA 92037.

The current address of Dr. Yasuhiro Katagiri is Tokyo Metropolitan Institute of Medical Science, Tokyo, Japan.

The current address of Dr. Karlheinz Peter is Innere Medizin III, Universität Heidelberg, Heidelberg, Germany.

The current address of Dr. Randall J. Faull, St. George Hospital, Kogarah, NSW, Australia.

1. *Abbreviations used in this paper:* Fg, fibrinogen; Fn, fibronectin.

and low molecular weight GTP-binding proteins (31, 32, 65, 79, 80, 82). How cytoplasmic signals result in changes in the conformation and ligand-binding affinity of the extracellular domain ("inside-out signal transduction") of the integrin remains obscure.

A variety of *in vitro* treatments may alter integrin affinity. When purified  $\alpha_{\text{IIb}}\beta_3$  is pretreated with RGD peptides, it subsequently binds Fg and PAC1 (23, 50, 85). Certain anti- $\beta_3$  antibodies directly increase the Fg-binding affinity of  $\alpha_{\text{IIb}}\beta_3$  (29) and certain anti- $\beta_1$  antibodies activate  $\alpha_5\beta_1$  to bind Fn with high affinity (26). Changes in the divalent cation composition of the extracellular medium, proteolytic digestion, and treatment with reducing agents may also "activate" integrins (3, 30, 34, 48, 62, 94, 98). Thus, moieties that interact with the extracellular domain can modulate integrin affinity. Furthermore, lipid environment can alter an integrin's ligand-binding capacity (17, 85) and an apparently novel lipid, IMF-1, may regulate  $\alpha_{\text{M}}\beta_2$  (37). Although many treatments may change integrin affinity *in vitro*, the mechanism(s) of physiological modulation has not been defined.

Integrin cytoplasmic domains may be targets of cytoplasmic signals that alter integrin affinity. The cytoplasmic tails are  $\sim 180$  Å from the ligand-binding site (93), but integrins can undergo propagated long-range conformational changes *in situ* (22). Truncation of the  $\alpha_{\text{IIb}}$  cytoplasmic domain after residue 990 ( $\alpha_{\text{IIb}}\Delta 991$ ) results in  $\alpha_{\text{IIb}}\beta_3$  that constitutively binds Fg and PAC1 (69). Conversely, truncations of  $\alpha_4$  (45),  $\alpha_2$  (46), and  $\beta_2$  (39) profoundly reduce the capacity of these integrins to mediate cell adhesion, possibly due to effects on ligand-binding affinity. Such truncations may result in misfolded receptors that lack function or that bind ligands with an inappropriately high affinity. Furthermore, a Ser<sup>752</sup> to Pro mutation in the  $\beta_3$  cytoplasmic domain was associated with an apparent  $\alpha_{\text{IIb}}\beta_3$  activation defect (16) in a single individual. Cytoplasmic domains of several integrins are phosphorylated coincidentally with increases in adhesive function. Nevertheless, detailed studies (38, 40) have so far failed to establish a role for these phosphorylations in increased affinity. Conversely, the rounding of cells during mitosis is associated with phosphorylation of  $\beta_1$  and reduced binding of  $\alpha_5\beta_1$  to Fn (43). Thus, physiological activation signals may be transmitted through integrin cytoplasmic domains, but definitive proof is lacking.

In the present work, we tested the hypothesis that integrin cytoplasmic domains are directly involved in physiological affinity modulation. Using chimeras containing the cytoplasmic domains of various  $\alpha$  and  $\beta$  subunits joined to the transmembrane and extracellular domain of  $\alpha_{\text{IIb}}\beta_3$ , we found that integrin cytoplasmic domains transduce cell type-specific signals that modulate ligand-binding affinity. These signals require active cellular processes and both  $\alpha$  and  $\beta$  cytoplasmic tails of the integrin, suggesting that they represent physiologically relevant signals. In addition, deletion of a highly conserved GFFKR motif, at the NH<sub>2</sub> terminus of the  $\alpha$  subunit cytoplasmic domain, also resulted in high affinity binding of ligands to  $\alpha_{\text{IIb}}\beta_3$ . In contrast to the chimeras, high affinity ligand binding to GFFKR deletion mutants was independent of cellular metabolism, cell type, and the bulk of the  $\beta$  subunit cytoplasmic domain. Thus integrin cytoplasmic tails are targets for the modulation of integrin affinity.

## Materials and Methods

### Antibodies and Reagents

The anti- $\alpha_{\text{IIb}}\beta_3$  antibody D57 was produced by Dr. Xiaoping Du (Scripps Research Institute) using previously described methods (28). It binds to CHO cells transfected with  $\alpha_{\text{IIb}}\beta_3$  but not  $\alpha_v\beta_3$ , and does not block Fg binding to  $\alpha_{\text{IIb}}\beta_3$ . This antibody was biotinylated with biotin-N-hydroxysuccinimide (Sigma Chem. Co., St. Louis, MO) according to manufacturers directions. The  $\alpha_{\text{IIb}}\beta_3$  complex specific antibody, 2G12 (71), was supplied by Dr. Virgil Woods (University of California, San Diego) and used as dilutions of ascites fluid. The anti-hamster  $\alpha_5$  (PBI) and anti- $\beta_1$  (7E2) antibodies were obtained from Dr. Rudolph Juliano (10) (University of North Carolina, Chapel Hill), and the  $\beta_1$  activating antibody, 8A2, was supplied by Drs. Nick Kovach and John Harlan (51) (University of Washington, Seattle). A human anti- $\alpha_5$  antibody, BIIG2, was supplied by Dr. Caroline Damsky (95) (University of California, San Francisco) while a polyclonal anti-peptide antibody against the cytoplasmic domain of human  $\alpha_5$  (44) was obtained from Drs. Gene Marcantonio and Richard Hynes (Massachusetts Institute of Technology, Boston). The isolation and characterization of other antibodies (anti-LIBS6, anti-LIBS2, anti- $\alpha_{\text{IIb}}$  cytoplasmic domain [28, 69]) and PAC1 (81) have been described. Glucose and 2-deoxyglucose were purchased from Sigma and sodium azide was from Fisher Scientific Co. (Pittsburgh, PA). The peptide GRGDSP was obtained from Peninsula Laboratories (Belmont, CA). Its purity and composition were verified by high performance liquid chromatography and fast atom bombardment mass spectroscopy.

### Cell Culture and Transfection

The human cell lines K562, U937, WI38, and MG63 were obtained from the Amer. Type Culture Collection (Rockville, MD) and maintained in RPMI 1640 media (Biowhittaker, Walkersville, MD) containing 10% FBS (Biowhittaker), 1% glutamine (Sigma), and 1% penicillin and streptomycin (Sigma). THP-1 cells (Amer. Type Culture Collection) were maintained in the same medium with the addition of 10 mM Hepes and 20 mM 2-mercaptoethanol. CHO cells (Amer. Type Culture Collection) were maintained in DMEM media (Biowhittaker) with 10% FCS, the above noted antibiotics, and 1% non-essential amino acids (Sigma). Human T lymphocytes were purified from peripheral blood of normal donors by centrifugation on a Ficoll-Paque gradient (Pharmacia Fine Chemicals, Piscataway, NJ), panning for monocytes on serum-coated dishes, and passage over a nylon wool column.

CHO cells were transiently transfected by electroporation. Cells in log phase growth were harvested with trypsin (Irvine Scientific), washed with PBS, and combined with appropriate cDNAs (10  $\mu$ g each subunit).  $3 \times 10^7$  cells in 0.5 ml in growth media were electroporated at 350 V, 960  $\mu$ F in a BTX (BTX, San Diego, CA) electroporator. Media were changed after 24 h, and cells analyzed for surface expression or PAC1 binding after 48 h. Stable CHO transfectants were established as above with cotransfection of 0.6  $\mu$ g of CDNeo. After 48 h, these cells were selected for 2 wk in 700  $\mu$ g/ml G418 (GIBCO BRL, Gaithersburg, MD) and clonal lines were established by single cell sorting in a FACStar (Becton Dickinson Immunocytometry Sys., Mountain View, CA). Stable K562 transfectants were established by electroporation of  $10^7$  cells in 0.8 ml of PBS at 300 V and 500  $\mu$ F. After 48 h, the cells were maintained in media containing 1 mg/ml G418, and clonal lines established by limiting dilution cloning.

### Flow Cytometry

Surface expression of integrins was analyzed by flow cytometry with specific antibodies as described (57, 68). Briefly,  $5 \times 10^5$  cells were incubated on ice for 30 min with primary antibody, washed, and then incubated on ice for 30 min with an FITC-conjugated goat anti-mouse (Tago, Burlingame, CA) second antibody. Cells were pelleted, resuspended, and analyzed on a FACScan (Becton Dickinson Immunocytometry Sys.). PAC1 binding was analyzed by two color flow cytometry. Cell staining was carried out in Tyrode's (33) buffer containing 2 mM MgCl<sub>2</sub> and CaCl<sub>2</sub> and 1 mg/ml BSA (Sigma) and dextrose. Single cell suspensions were obtained by harvesting with 3.5 mM EDTA, incubating for 5 min in 1 mg/ml TPCK trypsin (Worthington) and diluting with an equal volume of Tyrode's containing 10% FCS and 0.1% soybean trypsin inhibitor (Sigma). After washing,  $5 \times 10^5$  cells were incubated in a final volume of 50  $\mu$ l containing

0.1% PAC1 ascites in the presence or absence of 1 mM GRGDSP peptide. After a 30-min incubation at room temperature, cells were washed with cold Tyrode's solution and then incubated on ice with biotinylated antibody D57. After 30 min, cells were washed and then incubated on ice with Tyrode's containing 10% FITC-conjugated goat anti-mouse IgM (Tago) and 4% phycoerythrin-streptavidin (Molecular Probes Inc., Junction City, OR). Thirty minutes later cells were diluted to 0.5 ml with Tyrode's solution and analyzed on a FACScan (Becton Dickinson) flow cytometer as described (67). PAC1 binding (FITC staining) was analyzed only on a gated subset of cells positive for  $\alpha_{\text{M}}\beta_3$  expression (phycoerythrin staining). To define affinity state, histograms depicting PAC1 staining in the absence or presence of 1 mM GRGDSP were superimposed. Since RGD peptides are inhibitors of PAC1 binding to  $\alpha_{\text{M}}\beta_3$  (8), a rightward shift in the histogram in the absence of peptide is indicative of the presence of high affinity  $\alpha_{\text{M}}\beta_3$ . To compare the effects of multiple  $\alpha$  subunits, pooling of data involving experiments from different days, was required. To do this, a numerical activation index was defined as:

$100 \cdot (F_0 - F_R) / F_R$  where:

$F_0$  = Mean Fluorescence Intensity in the absence of inhibitor

$F_R$  = Mean Fluorescence Intensity in the presence of GRGDSP

Expression of  $\alpha_{\text{M}}\beta_3$  in transiently transfected K562 cells was too low to permit affinity state analysis. Thus, all data reported with these cells is from stable lines. The truncation mutant,  $\alpha_{\text{M}}\Delta 991$ , like a similar  $\alpha_{\text{L}}$  truncation (39), was expressed at low levels in transient transfections, so that all data obtained with this mutant refer to stable cell lines. In contrast the  $\alpha_{\text{L}}\Delta$  variant was well expressed, so that data from both transient and stable experiments are reported. Stable cell lines were also prepared with the following cytoplasmic domain combinations  $\alpha_{\text{M}}\beta_3$ ,  $\alpha_5\beta_3$ ,  $\alpha_5\beta_3\Delta 724$ ,  $\alpha_{\text{Ra}}\beta_3$ , and  $\alpha_{\text{Ra}}\beta_3\Delta 728$ . The data with the stable cell lines confirmed the findings in transient analyses. All other combinations were tested in transient transfections only.

## DNA Constructs

The generation of CDM8 constructs encoding  $\alpha_{\text{M}}$ ,  $\alpha_{\text{M}}\Delta 991$ ,  $\alpha_{\text{M}}\Delta 996$ ,  $\beta_3$ , and  $\beta_3\Delta 728$  have been previously described (68, 69, 97). The  $\beta_3$  truncation,  $\Delta 724$ , and amino acid substitution,  $S^{752} \rightarrow P$ , were first generated in BS3a (68) by oligonucleotide-directed mutagenesis (52), digested with HincII to isolate coding sequences, ligated to BstXI linkers, (Invitrogen, San Diego, CA) and subcloned into the BstXI sites of CDM8. The  $\beta_3$  chimera, containing the  $\beta_1$  cytoplasmic domain, was constructed by first generating an EcoRI site at bases 2387-2392 of  $\beta_1$  cDNA sequence. After HindIII digestion, a 400-bp fragment containing the complete  $\beta_1$  cytoplasmic domain and partial 3' non-coding sequences was isolated and subcloned into the HindIII site of CDM8. This construct was then digested with EcoRI and ligated with a 2.2-kb EcoRI fragment from CD3a (68) containing its transmembrane and extracellular domains.  $\beta_2$  cytoplasmic sequences were first isolated by the PCR from a  $\beta_2$  cDNA, and then subcloned into the MluI and XhoI sites of CDM8. The  $\beta_2$  cytoplasmic domain chimera was then generated by digestion with MluI and HindIII and ligation with a corresponding MluI-HindIII fragment from CD3a containing its extracellular and transmembrane sequences. Chimeric  $\alpha$  subunits were generated using a previously described strategy (69). Cytoplasmic sequences from  $\alpha_{\text{V}}$ ,  $\alpha_{\text{M}}$ ,  $\alpha_{\text{L}}$ ,  $\alpha_2$ ,  $\alpha_6A$ , and  $\alpha_6B$  were isolated from the appropriate cDNA clones by PCR (57). Amplified products were digested with HindIII and XbaI and subcloned into HindIII and XbaI cut CDM8. After digesting with HindIII, these constructs were ligated with a HindIII fragment from CD2b (68) containing its extracellular and transmembrane domains. PCR oligonucleotides for  $\alpha_{\text{L}}\Delta$  were designed to omit the VGFFK sequence. Its construction followed the procedure for other  $\alpha$  chimeras. The  $\alpha_{\text{Ra}}$  variant was made by first generating a Sall site in CD2b coding sequences corresponding to bases 3061-3066. This vector was then digested with Sall and XbaI and ligated to a Sall-XbaI Bluescript vector sequence (bases 674-731). All constructs were verified by DNA sequencing and purified by CsCl centrifugation before transfection. Oligonucleotides were synthesized on a model 391 DNA Synthesizer (Appl. Biosystems Inc., Foster City, CA).

## Ligand Binding

The binding of  $^{125}\text{I}$ -Fn or  $^{125}\text{I}$ -Fn to cultured cells was accomplished as described (26, 67). Cells were harvested with EDTA and trypsin as described above for flow cytometry and resuspended in a modified Tyrode's buffer (150

mM NaCl, 2.5 mM KCl, 2 mM  $\text{NaHCO}_3$ , 2 mM  $\text{MgCl}_2$ , 2 mM  $\text{CaCl}_2$ , 1 mg/ml BSA, and 1 mg/ml dextrose). A typical assay included 120  $\mu\text{l}$  of cells ( $2 \times 10^6$  cells per tube), 40  $\mu\text{l}$  of radiolabeled protein, and 40  $\mu\text{l}$  of inhibitor (GRGDSP peptide, blocking antibodies) or agonist (activating antibody). After 30 min at room temperature, 50- $\mu\text{l}$  aliquots were layered in triplicate on 0.3 ml of 20% sucrose and centrifuged for 3 min at 12,000 rpm.  $^{125}\text{I}$ -labeled protein associated with the cell pellet was determined by scintillation spectrometry. Nonsaturable binding was determined in the presence of 2 mM GRGDSP peptide. Data were fit to equilibrium binding models by the nonlinear least squares curve-fitting LIGAND program (64). In binding experiments using metabolic inhibitors, the cells were first incubated with 2 mg/ml 2-deoxyglucose and 0.1% sodium azide for 30 min at room temperature before addition of radiolabeled ligand. In washout experiments, cells treated in this way were washed, incubated with Tyrode's containing 1 mg/ml dextrose for 30 min at room temperature, and then analyzed for ligand binding.

## Immunoprecipitation

Transfectants were surface labeled by the Iodogen method according to the manufacturer's instructions (Pierce Chem. Co., Rockford, IL) and solubilized in lysis buffer (10 mM Hepes (pH 7.5), 0.15 M NaCl, 50 mM octylglucoside, 1 mM  $\text{CaCl}_2$ , 1 mM  $\text{MgCl}_2$ , 1 mM phenylmethylsulfonyl fluoride, 0.1 mM leupeptin, and 10 mM N-ethylmaleimide). Cell extracts were immunoprecipitated with polyclonal antiserum directed against the  $\alpha_{\text{M}}$  or  $\alpha_5$  cytoplasmic domains and a monoclonal antibody against the  $\alpha_{\text{M}}\beta_3$  complex (2G12). The antibodies were attached onto preswollen protein A-Sepharose beads (Pharmacia LKB Biotechnology Inc., Piscataway, NJ) by incubation at 4°C overnight. The antibody-conjugated Sepharose beads were washed, pelleted by centrifugation, and then incubated with the detergent lysates from the surface labeled cells overnight with shaking. The Sepharose beads were washed extensively in lysis buffer, resuspended in sample buffer (53), and boiled for 5 min. After centrifugation, the precipitated protein was resolved by SDS-PAGE (non-reducing, 7.5% acrylamide gels). Gels were dried, and radiolabeled polypeptides were visualized by autoradiography.

## Polymerase Chain Reaction

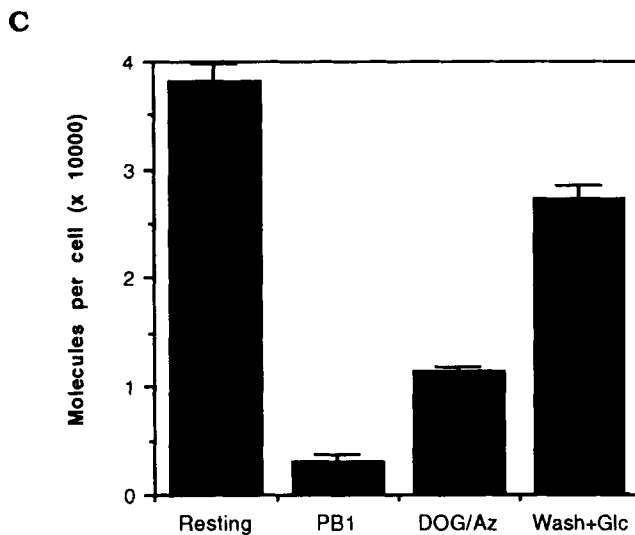
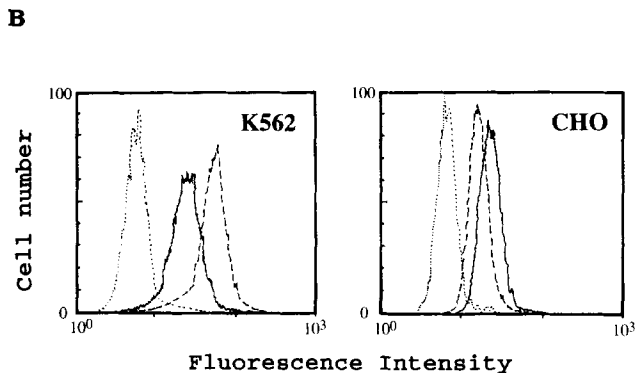
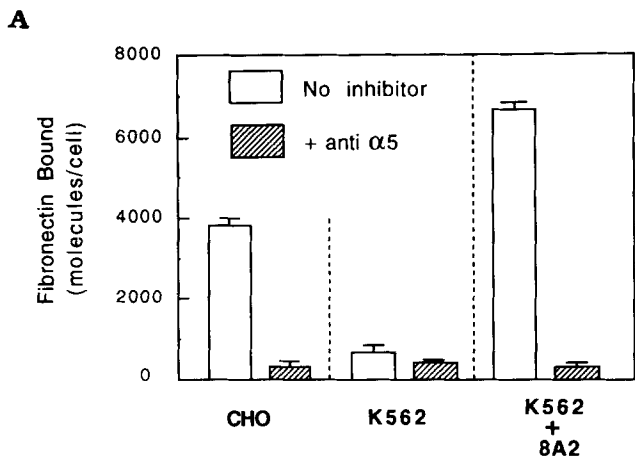
Total RNA was isolated from  $10^6$  transfected cells using the RNAzol reagent (Cinna Biotech). First strand cDNA synthesis from 5  $\mu\text{g}$  of RNA was performed with the cDNA cycle kit (Invitrogen) using oligo dT as a primer. Coding sequences downstream of the  $\alpha_{\text{M}}$  transmembrane region were specifically amplified with a 5' primer specific for transmembrane  $\alpha_{\text{M}}$  (2bsf: CGGGCCCTGGAGGAGAGGGCCATTC) and 3' primers specific for the cytoplasmic sequences of  $\alpha_{\text{M}}$  ( $\alpha_{\text{M}}\text{cyt}$ : CTCTGTTGGGAGGGAAA-CGA) and  $\alpha_5$  ( $\alpha_5\text{cyt}$ : TGTAACAAGGGTCCTTCAC). Amplified products were analyzed by agarose gel electrophoresis.

## Results

### Cell Type-Specific and Energy-dependent Affinity Modulation of Integrin $\alpha_5\beta_1$

As noted above, there is evidence for cell type-specific control of the adhesive function of integrins. To begin to investigate the cell type-specific control of ligand-binding affinity, we first analyzed the binding of soluble Fn to cells expressing integrin  $\alpha_5\beta_1$ . The cells analyzed fell into two groups: those that bound Fn with only low affinity ( $K_d > 1 \mu\text{M}$ ), e.g., K562, THP1, U937, and peripheral blood T cells, and those that bound with moderate affinity ( $K_d \sim 100 \text{ nM}$ ), e.g., CHO, WI-38, and MG63 cells (Fig. 1 A). The low affinity  $\alpha_5\beta_1$  was intrinsically functional since it bound Fn after activation with the 8A2 monoclonal antibody (26) (Fig. 1 A) and was expressed at comparable levels to high affinity  $\alpha_5\beta_1$  (Fig. 1 B). Specificity of Fn binding to high affinity  $\alpha_5\beta_1$  was verified by inhibition with an anti  $\alpha_5$  antibody (Fig. 1 A).

To find out whether spontaneous high affinity Fn binding



**Figure 1.** The high affinity state of  $\alpha_5\beta_1$  is cell type-specific and energy-dependent. (A)  $^{125}\text{I}$ -Fn (50 nM) was incubated at 22°C with CHO or K562 cells. After 30 min, bound Fn was assessed by centrifugation through a sucrose cushion as described in Materials and Methods.  $\alpha_5\beta_1$ -specific binding was established by blocking binding to the CHO cells with PB1, an anti-hamster  $\alpha_5$ . Binding to K562 cells was induced by addition of 20 nM activating antibody (8A2) and was inhibited by the anti- $\alpha_5$ , BIIG2. (B) The level of surface expression of  $\alpha_5\beta_1$  in the two cell types. CHO and K562 cells were stained with irrelevant mouse IgG (dotted line), an anti- $\beta_1$  antibody (K562:8A2, CHO:7E2) (solid line), or an anti- $\alpha_5$  antibody (K562:BIIG2, CHO:PB1) (dashed line), and then analyzed by flow cytometry as described in Materials and Methods. (C) The binding of  $^{125}\text{I}$ -Fn to CHO cells (Resting), to cells incubated in

```

          989 991 996
 $\alpha_{1\text{b}}$  KVGFFFKRNRP PLEEDDEEGE
          ↑
 $\alpha_{1\text{v}}$  RMGFFFKRVRP PQEEQEREQL QPHENGEGNS ET
 $\alpha_{1\text{M}}$  KLGFFKRQYK DMMSEGGGPPG AEPQ
 $\alpha_{1\text{L}}$  KVGFFFKRNLK EKMEAGRGVP NGIPAEDSEQ LASQEQEAGDP GCLKPLHEKD SESGGGKD
 $\alpha_{1\text{Ra}}$  KVDGIDKLDI EFLQPGGSTS SRGSW
 $\alpha_2$  KLGFFKRKYE KMTKNPDEID ETELSS
 $\alpha_5$  KLGFFKRSLP YGTAMEKAQL KPPATSDA
 $\alpha_{6\text{A}}$  KCGFFKRNK DHYDATYHKA EIHAQPSDKE RLTSDA
 $\alpha_{6\text{B}}$  KLGFFKRSRY DDSVPRYHAV RIRKEEREIK DEKYIDNLEK KQWITKWNRN ESYS

          716 724 728
 $\beta_3$  KLLITIHDRK EFAKFEEEERA RAKWDTTANNP LYKEATSTFT NITYRGT
          ↑
 $\beta_2$  KALIHLSDLR EYRRFEKEKL KSQWNDNNPL FKSATTTVMN PKFAES
 $\beta_1$  KLLMIHDRR EFAKFEKEKM NAKWDTGENP IYKSAVTTVV NPKYEGK
          ↑
          P
  
```

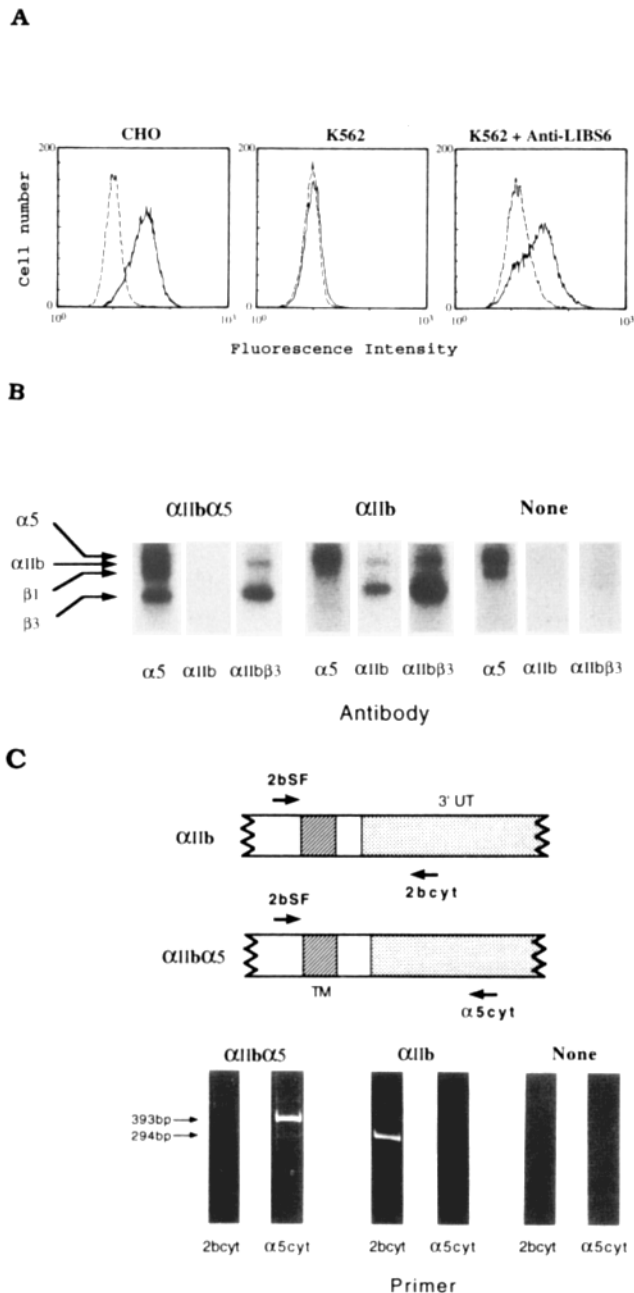
**Figure 2.** Amino acid sequences of wild-type and variant integrin cytoplasmic domains. Single letter amino acid code is used. The arrows underneath the  $\alpha_{1\text{b}}$  (residue 990) and  $\beta_3$  (residue 727) sequences denote the position at which chimeric cytoplasmic domains were joined to the extracellular and transmembrane domains of  $\alpha_{1\text{b}}$  and  $\beta_3$ . The position of stop codons producing cytoplasmic truncations are noted by triangles, while the S<sup>752</sup>→P point mutation in  $\beta_3$  is indicated. The residues deleted in the  $\alpha_{1\text{L}}$  cytoplasmic domain are overlain by the heavy line.

to  $\alpha_5\beta_1$  is an active process, we treated CHO cells with a combination of inhibitors of oxidative phosphorylation ( $\text{NaN}_3$ ) and anaerobic glycolysis (2-deoxyglucose). This resulted in loss of specific high affinity Fn binding. This effect was partially reversible since washout of the metabolic inhibitors resulted in restoration of 75% of the high-affinity binding (Fig. 1 C). Thus, high affinity Fn binding to integrin  $\alpha_5\beta_1$  is cell type-specific and an active cellular process.

### The Cytoplasmic Domains of $\alpha_5\beta_1$ Confer an Energy-dependent High Affinity State on $\alpha_{1\text{b}}\beta_3$ in Some Cells but Not Others

To decide whether the cytoplasmic domains of  $\alpha_5\beta_1$  were involved in cell type-specific affinity modulation, we generated chimeras in which the cytoplasmic domains of  $\alpha_{1\text{b}}$  and  $\beta_3$  were replaced with the corresponding sequences from  $\alpha_5$  and  $\beta_1$  (Fig. 2). The  $\alpha$  and  $\beta$  chimeras were then cotransfected into CHO or K562 cells, and the affinity state of the extracellular  $\alpha_{1\text{b}}\beta_3$  reporter group was assayed by binding of PAC1, an antibody specific for the high affinity state of  $\alpha_{1\text{b}}\beta_3$  (81). The double chimera bound PAC1 when it was expressed in CHO cells (Fig. 3). Since wild-type  $\alpha_{1\text{b}}\beta_3$  does not bind PAC1 when expressed in CHO cells (67), it is concluded that the  $\alpha_5\beta_1$  cytoplasmic domains conferred the high affinity state on  $\alpha_{1\text{b}}\beta_3$ . In sharp contrast, PAC1 did not bind to the double chimera in K562 cells. However, PAC1

medium containing 2 mM deoxyglucose and 0.1% sodium azide (DOG/Az), or to cells washed free of these inhibitors and returned to glucose-containing medium (Wash + Glc) was determined. Specificity of binding to  $\alpha_5\beta_1$  was verified by inhibition with the PB1 antibody.



**Figure 3.** Chimeric integrin constructs manifest cell type-specific affinity states. (A) FACS analysis. CHO or K562 cells were stably transfected with the chimeras containing the cytoplasmic domains of  $\alpha_5$  and  $\beta_1$  and the affinity state of the  $\alpha_{11b}\beta_3$  extracellular domain was assayed by its ability to bind PAC1 in the absence (solid line) or presence (dotted line) of 1 mM GRGDSP. Depicted are flow cytometry histograms. The K562 transfectants specifically bound PAC1 only after incubation with 6  $\mu$ M activating antibody, anti-LIBS 6. (B) Immunoprecipitation analysis of K562 transfectants. Wild-type K562 cells (None) or stable transfectants expressing the  $\alpha$  subunit noted ( $\alpha_{11b}\alpha_5$  =  $\alpha_5$  cytoplasmic domain chimera) were surface iodinated, lysed, and immunoprecipitated with polyclonal antibodies specific for the  $\alpha_5$  and  $\alpha_{11b}$  cytoplasmic domains or with a monoclonal antibody reactive with the extracellular domain of  $\alpha_{11b}\beta_3$  (2G12). Immunoprecipitates were resolved by SDS-PAGE and constituent polypeptides were visualized by autoradiography. (C) Reverse transcriptase-polymerase chain reaction (RT-PCR). The location of the 2bsf, 2bcyt and  $\alpha_5$ cyt primers used for PCR

bound after addition of an activating antibody, anti-LIBS6, confirming that the ligand-binding site was intact (Fig. 3 A). Thus, the capacity of cell type-specific elements to modulate affinity depends on the integrin cytoplasmic domains.

Since K562 cells express endogenous  $\alpha_{11b}$  under certain conditions (12), it was necessary to verify that all of the  $\alpha_{11b}$  expressed in the  $\alpha$  chimera transfectants contained the  $\alpha_5$  cytoplasmic domain. Immunoprecipitation of  $\alpha$  chimera transfectants with an anti- $\alpha_5$  cytoplasmic domain antibody isolated polypeptides corresponding to transfected  $\alpha_{11b}$  and  $\beta_3$  chimeras and endogenous  $\alpha_5\beta_1$  (Fig. 3 B). In contrast, an anti- $\alpha_{11b}$  cytoplasmic domain antibody immunoprecipitated no labeled polypeptides. An anti- $\alpha_5$  cytoplasmic antibody precipitated only endogenous  $\alpha_5\beta_1$  from wild-type  $\alpha_{11b}\beta_3$  transfectants. In addition, we confirmed fidelity of expression at the mRNA level. Reverse transcriptase PCR was performed using a 5' primer specific for the extracellular domain of  $\alpha_{11b}$  and 3' primers specific for cytoplasmic domains of  $\alpha_{11b}$  or  $\alpha_5$  (Fig. 3 C). A specific 393-bp band was observed from  $\alpha$  chimera transfectants when primed with the 3'  $\alpha_5$  oligonucleotide. A specific 294-bp band was observed with wild-type  $\alpha_{11b}$  transfectants when primed with the 3'  $\alpha_{11b}$  oligonucleotide. No bands were observed when inappropriate 3' primers were used.

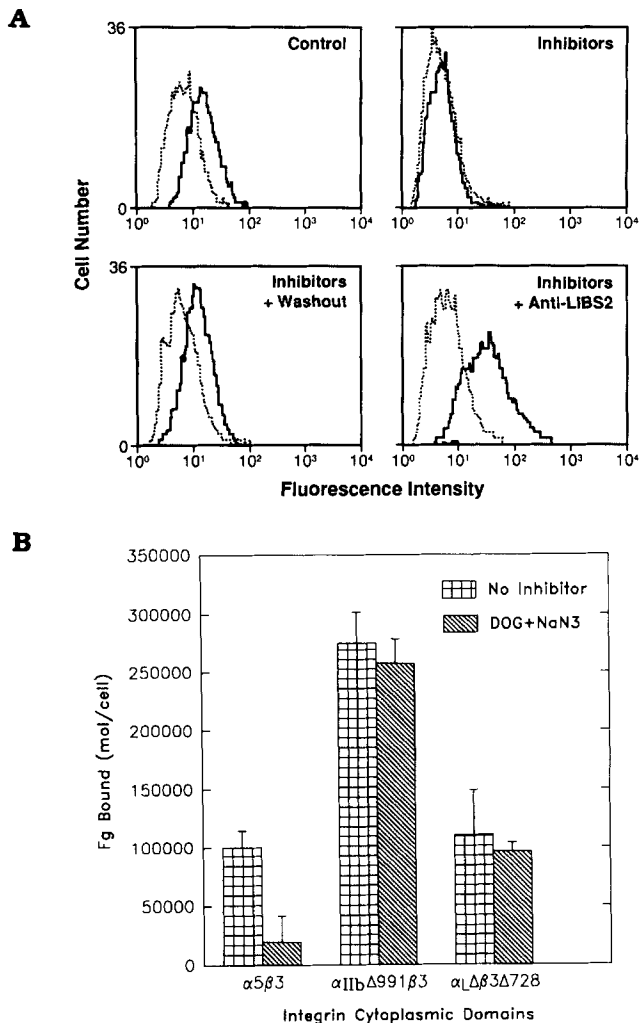
As was shown in Fig. 1, high affinity Fn binding to  $\alpha_5\beta_1$  depends on active cellular metabolism. We therefore analyzed the effects of NaN<sub>3</sub> and 2-deoxyglucose on the affinity state of the double chimera in CHO cells. These inhibitors blocked both PAC1 (Fig. 4 A) and Fg (Fig. 4 B) binding. Anti-LIBS2, an activating antibody (29), restored high affinity binding. Furthermore, the metabolic blockade was reversible since high affinity ligand binding reappeared after the inhibitors were washed out (Fig. 4 A). These results show that  $\alpha_5\beta_1$  cytoplasmic sequences confer a cell type-specific, energy-dependent, high affinity state on the extracellular domain of  $\alpha_{11b}\beta_3$ .

### Both $\alpha$ and $\beta$ Cytoplasmic Domains Are Involved in Affinity Modulation

To learn which cytoplasmic domain specified the high affinity state in CHO cells, we transfected each subunit chimera with a complementary wild-type subunit. Transfectants expressing both  $\alpha$  and  $\beta$  chimeras or expressing the chimeric  $\alpha$  but wild-type  $\beta_3$  subunits bound PAC1 (Fig. 5 A). In contrast, cells expressing the  $\beta$  chimera with wild-type  $\alpha_{11b}$  were in a low affinity state and bound PAC1 only after addition of anti-LIBS2 (Fig. 5 A). These results show that  $\alpha$  cytoplasmic sequences are involved in specifying affinity state.

To find out if the  $\beta$  subunit was also involved in specifying the high affinity state in CHO cells, we constructed two  $\beta_3$

analysis are illustrated. The transmembrane (TM: crosshatched), 3' untranslated (3'UT: stippled), and cytoplasmic and extracellular domain (clear) sequences are indicated. RT-PCR was performed as described in Materials and Methods with the 5' 2bsf primer and 3' primers specific for  $\alpha_{11b}$  or  $\alpha_5$  3' untranslated sequences. Amplified products were analyzed by agarose gel electrophoresis (below) with arrows denoting the position of the 393 and 294 bp bands. Transfectant type is listed above while the 3' primer used is noted.



**Figure 4.** The high affinity state of the  $\alpha_5$  cytoplasmic domain chimera is energy-dependent. (A) PAC1 binding. Stable CHO transfectants expressing the  $\alpha_5$  and  $\beta_1$  cytoplasmic domain chimeras were assayed for PAC1 binding in the absence (solid line) and presence (dotted line) of 2 mM GRGDSP by flow cytometry. Transfectants incubated with 2 mg/ml deoxyglucose and 0.1% NaN<sub>3</sub> (Inhibitors) as described in Materials and Methods manifested loss of specific binding. Addition of 6  $\mu$ M anti-LIBS2 (Inhibitors + Anti-LIBS2) or washout of these inhibitors (Inhibitors + Washout) and return to glucose-containing medium reconstituted specific PAC1 binding. (B) Fibrinogen binding. Stable CHO transfectants expressing the cytoplasmic domains noted below were analyzed for fg binding as described in Materials and Methods. Constitutive binding to transfectants expressing the  $\alpha_5$  chimera with wild-type  $\beta_3$  was inhibited by 2 mg/ml deoxyglucose plus 0.1% NaN<sub>3</sub>; binding to transfectants expressing the  $\alpha_{11b}\Delta 991$  or  $\alpha_L\Delta$  variant was not (see below).

cytoplasmic variants,  $\beta_3\Delta 724$  and  $\beta_3(S^{752}\rightarrow P)$ . The former is a truncation mutant that ends at D<sup>723</sup>, while the latter contains a single nucleotide alteration resulting in a Ser<sup>752</sup> $\rightarrow$ Pro substitution (Fig. 2). These  $\beta_3$  cytoplasmic domain mutants were then cotransfected with the  $\alpha$  chimera. In contrast to wild-type  $\beta_3$ , coexpression of either  $\beta_3$  variant with chimeric  $\alpha$  resulted in a receptor that failed to bind PAC1 constitutively (Fig. 5 B). Thus, the cytoplasmic domain of the

$\beta$  subunit as well as the  $\alpha$  subunit is involved in affinity modulation.

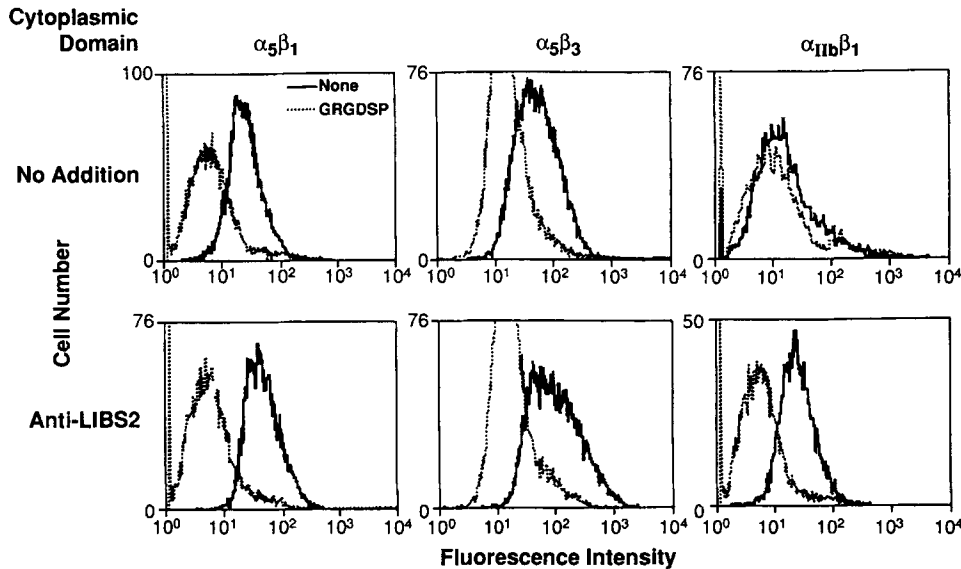
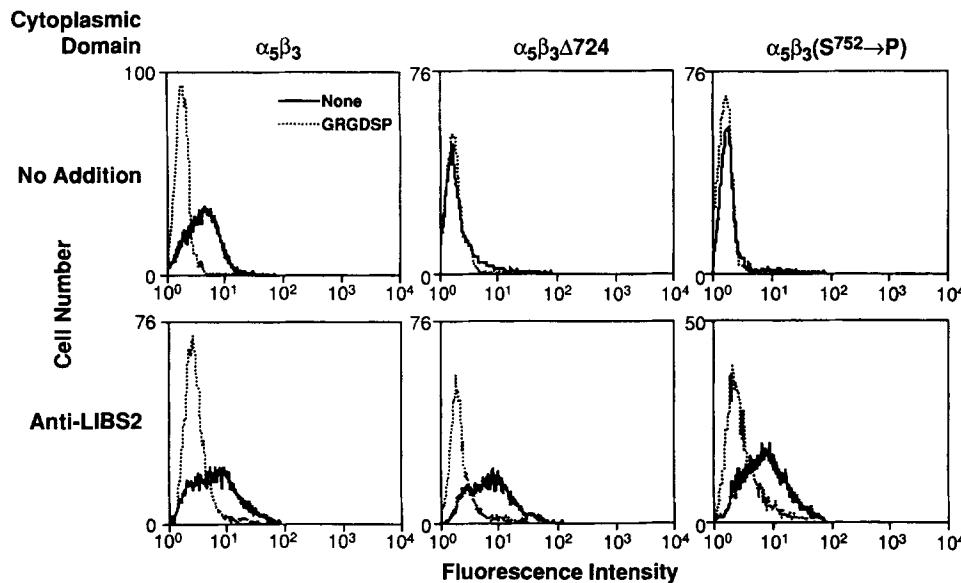
### Regulation of Integrin Affinity by the $\alpha$ Subunit Cytoplasmic Domain Is $\alpha$ Subunit-Specific

These data established that the cytoplasmic domains of  $\alpha_{11b}$  and  $\alpha_5$  specify different affinity states in CHO cells;  $\alpha_{11b}$  the low and  $\alpha_5$  the high affinity state. To learn whether there are consensus activation sequences, we constructed chimeras with the cytoplasmic domains of six additional  $\alpha$  subunits and analyzed their affinity state after cotransfection with  $\beta_3$  into CHO cells. The  $\alpha$  cytoplasmic domains of three other  $\beta_1$  family members ( $\alpha_2$ ,  $\alpha_6A$ ,  $\alpha_6B$ ) conferred PAC1 binding (Fig. 6 a), while those chimeras containing  $\alpha$  subunit cytoplasmic domains from  $\beta_2$  ( $\alpha_M$ ,  $\alpha_L$ ) (data not shown) or  $\beta_3$  ( $\alpha_v$ ) (Fig. 6 A) families did not. The same result was obtained with the  $\beta$  chimeras containing cytoplasmic domains of the relevant  $\beta$  subunit partner ( $\beta_1$  for  $\alpha_2$ ,  $\alpha_v$ ,  $\alpha_6A$ , and  $\alpha_6B$  or  $\beta_2$  for  $\alpha_L$  and  $\alpha_M$ ). Similar to the  $\alpha_5$  chimera, constitutive PAC1 binding was also dependent upon the  $\beta$  cytoplasmic domain. It was lost when the  $\alpha_2$ ,  $\alpha_6A$ , or  $\alpha_6B$  chimeras were cotransfected with  $\beta_3\Delta 724$  or  $\beta_3S752P$  (Fig. 6 B). Thus, the  $\alpha$  subunit cytoplasmic domain designates integrin-specific affinity differences. The  $\beta$  subunit cytoplasmic domain may be permissive for the high affinity state.

### Deletion of Conserved $\alpha$ Cytoplasmic Sequences Results in High Affinity Ligand Binding That Is Independent of Metabolic Energy and the $\beta$ Subunit Cytoplasmic Domain

We previously reported that constitutive ligand binding to  $\alpha_{11b}\beta_3$  results from a truncation of the cytoplasmic domain of  $\alpha_{11b}$  (69). To identify the important deleted  $\alpha_{11b}$  cytoplasmic residues, we generated additional variants. Integrin  $\alpha$  subunit cytoplasmic domains contain a highly conserved GFFKR sequence at their NH<sub>2</sub> termini (Fig. 2). As previously reported (69, 97), the  $\alpha_{11b}\Delta 991$  truncation eliminates this motif and results in constitutive PAC1 binding (Fig. 7 A; panel A) whereas a truncation after the GFFKR ( $\alpha_{11b}\Delta 996$ ) does not (Fig. 7 A; panel C). This pinpoints the conserved motif as a regulator of integrin affinity. To test this idea, we removed the LGFFK residues from the cytoplasmic domain of an  $\alpha_L$  cytoplasmic domain chimera (Fig. 2). This chimera was selected because it possesses the longest  $\alpha$  cytoplasmic domain. Coexpression of this chimeric internal deletion mutant ( $\alpha_L\Delta$ ) in CHO cells with  $\beta_3$  resulted in high affinity PAC1 binding (Fig. 7 B, panel A). Finally, to further exclude contributions from downstream  $\alpha$  sequences, we generated a variant that contains a 24-residue random cytoplasmic sequence (Fig. 2). This construct ( $\alpha_{Rn}$ ) also conferred high affinity binding when expressed in CHO cells with wild-type  $\beta_3$  (Fig. 7 A; panel B).

To gain insight into the mechanisms of high affinity binding conferred by the GFFKR deletion mutants, we examined the requirements for cellular metabolism and  $\beta$  cytoplasmic sequences. In contrast to the constitutively active chimeras, high affinity PAC1 binding in the GFFKR deletion variants was maintained when they were coexpressed with the truncated  $\beta_3$  subunit (Fig. 7 B; panel B). In addition, in contrast to transfectants expressing constitutively active  $\alpha$

**A****B**

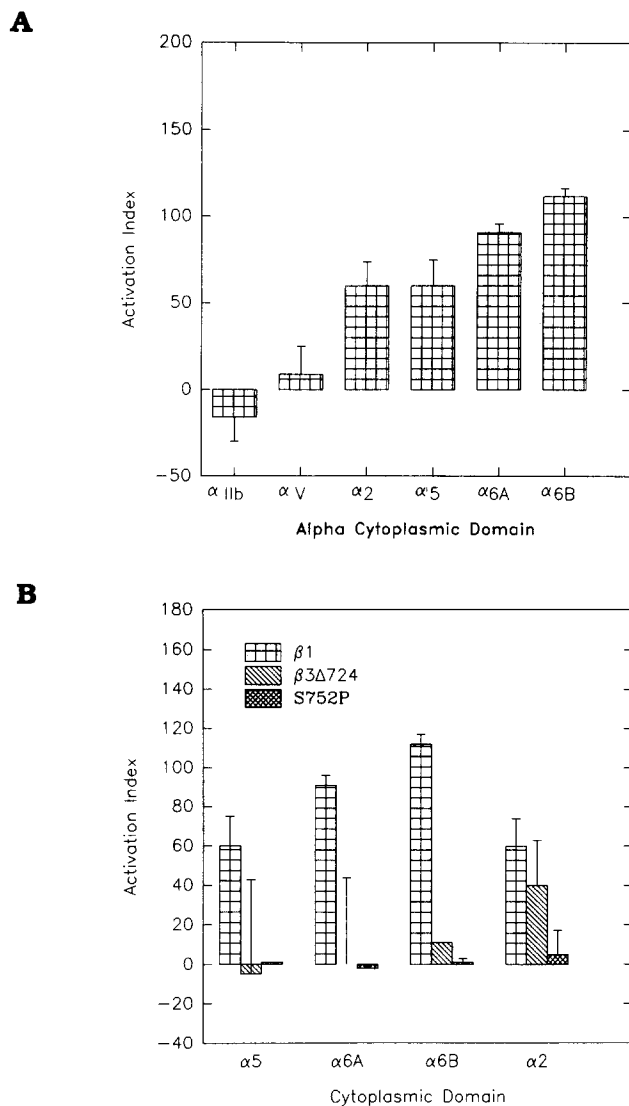
chimeras, transfectants expressing the GFFKR deletions retained high affinity for Fg (Fig. 4 B) and PAC1 (Fig. 7 B; panel C) when treated with the metabolic inhibitors  $\text{NaN}_3$  and 2-deoxyglucose. Finally, the  $\alpha_1\Delta$  mutant conferred cell-type independent activation, since it was active in K562 (Fig. 7 B; panel D) and COS (not shown) as well as CHO cells. Thus, deletions in the highly conserved GFFKR motif resulted in a cell type-independent high affinity state that was

resistant to metabolic inhibitors and truncation of the  $\beta$  subunit.

### Discussion

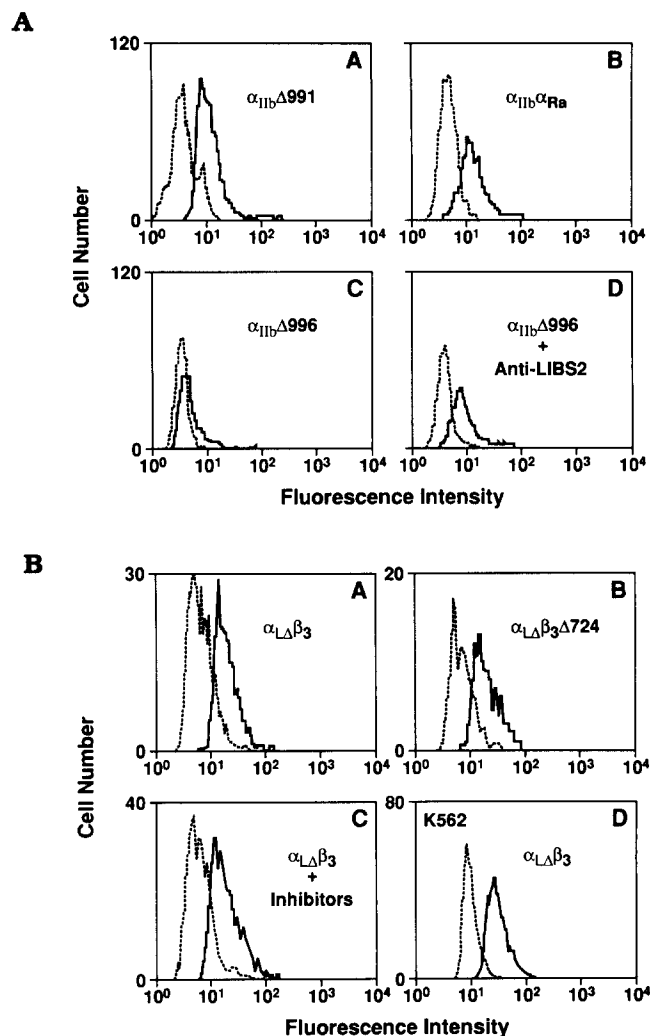
The major findings of this work are (a) the affinity state of integrin  $\alpha_5\beta_1$  is regulated by cell type-specific factors. The high affinity state requires active cellular processes suggest-

**Figure 5.** Role of both  $\alpha$  and  $\beta$  cytoplasmic domains in affinity modulation. (A) The  $\alpha$  subunit cytoplasmic domain specifies affinity state. CHO cells were transiently transfected with subunits comprised of the extracellular and transmembrane domains of  $\alpha_{11b}$  and  $\beta_3$  joined to the indicated cytoplasmic domains. The affinity state of the extracellular portion of  $\alpha_{11b}\beta_3$  was assessed by PAC1 binding. Binding was analyzed in the absence (solid line) or presence (dotted line) of GRGDSP peptide. Histograms of cells incubated in the presence of 6  $\mu\text{M}$  anti-LIBS2 are depicted in the lower panels. Specific PAC1 binding is present in both transfectants containing the  $\alpha_5$  cytoplasmic domain irrespective of the presence of either the  $\beta_3$  or  $\beta_1$  cytoplasmic domain on the  $\beta_3$  subunit. In contrast, PAC1 specifically bound to those transfectants containing the  $\alpha_{11b}$  cytoplasmic domain only in the presence of the activating antibody, anti-LIBS2. (B) Affinity state is dependent upon the  $\beta_3$  cytoplasmic domain. Stable CHO cell lines expressing recombinant  $\alpha_{11b}\beta_3$  chimeras containing the noted cytoplasmic domains were reacted with PAC1 and bound antibody was detected by flow cytometry as described in Materials and Methods. Binding was analyzed in the absence (solid line) or presence (dotted line) of GRGDSP peptide. The intrinsic functionality of each construct was assessed by PAC1 binding in the presence of 6  $\mu\text{M}$  anti-LIBS2 (lower panels). A  $\beta_3$  cytoplasmic truncation ( $\Delta 724$ ) and single amino acid substitution ( $\text{S}^{752}\rightarrow\text{P}$ ) both abolished the constitutive high affinity state conferred by the cytoplasmic domain of  $\alpha_5$ .



**Figure 6.** Affinity state is  $\alpha$  subunit cytoplasmic domain specific. (A) Effect of different  $\alpha$  cytoplasmic domains. Chimeric  $\alpha$  subunits consisting of extracellular and transmembrane  $\alpha_{11b}$  with the indicated cytoplasmic domain were transiently cotransfected with  $\beta_3$  into CHO cells. PAC1 binding was quantified by flow cytometry and the activation index was calculated as:  $100 \cdot (F_0 - F_R) / F_R$  where:  $F_0$  = Mean Fluorescence Intensity in the absence of inhibitor;  $F_R$  = Mean Fluorescence Intensity in the presence of 2 mM GRGDSP. Depicted are the mean  $\pm$  SD of at least three independent experiments for each  $\alpha$  chimera. (B)  $\beta$  Subunit cytoplasmic domain dependence of the high affinity state.  $\alpha$  Subunit chimeras containing the indicated cytoplasmic sequences were cotransfected with a  $\beta_3$  subunit whose cytoplasmic domain was truncated ( $\beta_3\Delta 724$ ), contained the  $S^{752} \rightarrow P$  mutation ( $S752P$ ), or had been exchanged for the homologous region of  $\beta_1$ . PAC1 binding was analyzed as described in panel A. Mean  $\pm$  SD of at least three independent experiments for each  $\alpha \beta$  pair.

ing that low affinity may be the default state. (b) Cell type-specific signals that modulate integrin affinity are transmitted through the cytoplasmic domains. Both cytoplasmic domains are involved in these signaling events. (c) Certain deletions in the conserved GFFKR sequence in the  $\alpha$  subunit cytoplasmic domain reset the default state to high affinity. In



**Figure 7.** GFFKR deletion variants confer an energy and  $\beta$  subunit cytoplasmic domain-independent high affinity state. (A) GFFKR sequence deletion activates  $\alpha_{11b}\beta_3$ . Stable CHO cell lines were established by cotransfection of  $\alpha_{11b}$  containing the noted  $\alpha$  cytoplasmic domain with wild-type  $\beta_3$ . PAC1 binding in the absence (solid line) and presence (dotted line) of GRGDSP was assessed by flow cytometry. The  $\alpha_{11b}\Delta 991$  transfectant, which lacks GFFKR, specifically binds PAC1 (panel A). In contrast, the  $\alpha_{11b}\Delta 996$  transfectant, which retains GFFKR, binds only after activation with anti-LIBS2 (panels C and D). Replacement of the  $\alpha_{11b}$  cytoplasmic domain with random sequence also induces PAC1 binding (panel B,  $\alpha_{Ra}$ ). (B) Energy,  $\beta$  subunit cytoplasmic domain, and cell type-independent high affinity state of GFFKR deletion variants. CHO cells were transiently transfected with chimeras of the extracellular and transmembrane domains of  $\alpha_{11b}\beta_3$  joined to the indicated cytoplasmic domains. Specific PAC1 binding to the population of cells expressing  $\alpha_{11b}\beta_3$  was detected as described in Fig. 7 A. A GFFKR "loop out" mutant manifested PAC1 binding (panel A) that was maintained in the presence of 0.1%  $NaN_3$  and 2 mM 2-deoxyglucose (panel C). This treatment abolished ligand binding to an  $\alpha_{11b}\beta_3$  chimera bearing the cytoplasmic domain of  $\alpha_5\beta_1$  (not shown, but cf. Fig. 4 A). High affinity state was also maintained despite an extensive deletion of the  $\beta_3$  cytoplasmic domain (panel B) that disrupted PAC1 binding to the  $\alpha_5\beta_1$  chimera (not shown but cf. Fig. 5 B). Similar results were obtained with  $\alpha_{11b}\Delta 991$  and  $\alpha_{Ra}$  transfectants. A stable K562 cell line bearing the GFFKR deletion mutant specifically bound PAC1 (panel D), but the  $\alpha_5\beta_1$  chimera was not active in these cells (cf. Fig. 3 A).



Table I. Summary of Affinity States of the Extracellular Domain: Physiological Modulation

|                | $\beta_3$ | $\beta_3\Delta 724$ | $\beta_3S752P$ | $\beta_1$ | $\beta_2$ |
|----------------|-----------|---------------------|----------------|-----------|-----------|
| $\alpha_{IIb}$ | LO        | LO                  | LO             | LO        | —         |
| $\alpha_2$     | HI        | <u>LO</u>           | <u>LO</u>      | HI        | —         |
| $\alpha_5$     | HI        | <u>LO</u>           | <u>LO</u>      | HI        | —         |
| $\alpha_{6A}$  | HI        | <u>LO</u>           | <u>LO</u>      | HI        | —         |
| $\alpha_{6B}$  | HI        | <u>LO</u>           | <u>LO</u>      | HI        | —         |
| $\alpha_L$     | LO        | —                   | —              | —         | LO        |
| $\alpha_M$     | LO        | —                   | —              | —         | LO        |
| $\alpha_V$     | LO        | —                   | —              | —         | —         |

Summary of the affinity states, as assayed by PAC1 binding to CHO cells transiently transfected with chimeras of the extracellular and transmembrane domains of  $\alpha_{IIb}\beta_3$  joined to the indicated cytoplasmic domains. Affinity states were defined as HI = Activation Index  $\geq 60$  and LO = Activation Index  $\leq 45$ . Double underlining indicates the experiments that establish the importance of the  $\beta$  subunit cytoplasmic domain in maintenance of the high affinity state. In all instances of the high affinity state, treatment with  $\text{NaN}_3$  and 2-deoxyglucose resulted in reversion to the low affinity state.

these deletion mutants, the high affinity state is independent of cell type, and is not blocked by metabolic inhibitors or by near complete truncation of the  $\beta$  subunit tail. These studies show that the cytoplasmic domains of integrins control their affinity state. Thus, these domains become attractive targets for approaches to alter cell adhesion. Further, the conserved GFFKR motif of the  $\alpha$  subunit cytoplasmic domain maintains the default low affinity of the extracellular domain.

The ligand-binding affinity of integrin  $\alpha_5\beta_1$  depends on the cell type in which it is found. Such differences in ligand-binding affinity could well account for previous reports of cellular variation in the adhesive function of integrins (1, 15, 25, 35, 49, 55, 62, 66, 94). It is possible that cell type-dependent affinity differences are due to structural variations in  $\alpha_5\beta_1$  synthesized in the different cell types. Permanent structural variants (e.g., alternative splicing [5, 11, 41, 42, 92], alternative proteolytic processing [58]) can be excluded as the sole cause of the affinity differences reported here because the affinity of  $\alpha_5\beta_1$  was reversibly decreased by metabolic inhibitors. Consequently, the increased affinity of  $\alpha_5\beta_1$  in CHO cells seems the result of active cellular signals. Since the metabolic inhibitors caused the reversion of  $\alpha_5\beta_1$  to the low affinity state, it seems that low affinity is the default state of  $\alpha_5\beta_1$ . Similarly  $\alpha_{IIb}\beta_3$  and  $\alpha_{IIb}\beta_2$  usually require active cellular processes for high affinity ligand binding (4, 61). Furthermore, purified  $\alpha_{IIb}\beta_3$  in liposomes spontaneously reverts to low affinity after removal of activating ligands (84). Thus, default low affinity state may be a general property of integrins.

Signals that modulate the affinity of  $\alpha_5\beta_1$  are targeted through the integrin's cytoplasmic domains. Joining the cytoplasmic domains of  $\alpha_5\beta_1$  onto the extracellular and transmembrane domains of  $\alpha_{IIb}\beta_3$ , an exchange involving less than 5% of the total mass of the integrin, caused the  $\alpha_{IIb}\beta_3$  to assume the high affinity state in CHO cells. Biologically relevant signals mediated the increased affinity of the chimera since: (a) it was cell-type specific, (b) it could be reset to the default low affinity by addition of inhibitors of oxidative phosphorylation and anaerobic glycolysis, and (c) a  $\beta_3$  cytoplasmic domain mutation ( $S^{752}\rightarrow P$ ) returned the chimeric integrin to the low affinity state. This naturally occurring mutation is associated with defective activation of  $\alpha_{IIb}\beta_3$  in platelets (16). Cell-type specific signaling elements that interact with the integrin cytoplasmic domains could

readily explain the distinctive cellular influences on integrin affinity. In view of the marked sequence divergence of the  $\alpha$  subunit tails (Fig. 2), multiple such integrin-specific elements might exist.

As summarized in Table I, the  $\alpha$  subunit cytoplasmic domain designated integrin-specific differences in affinity state. In CHO cells,  $\alpha_5$ ,  $\alpha_{6A}$  and B, and  $\alpha_2$  cytoplasmic tail chimeras specified the high affinity state. The  $\alpha_{IIb}\Delta 996$  truncation mutant leaves the common (Fig. 2) KXGFFKR motif and results in a low affinity state. This suggests that activation signaling sequences important for conversion of the integrin to a high affinity state reside carboxyterminal of GFFKR in  $\alpha_5$ ,  $\alpha_{6A}$  and B, and  $\alpha_2$ . Thus, deletion of related sequences could account for the reduction of cell adhesion by certain truncations of the  $\alpha_4$  (45) or  $\alpha_2$  (46) cytoplasmic tail. In addition, truncations of  $\alpha_{IIb}$  or  $\alpha_1$  that retain GFFKR lose the capacity to constrain integrin localization to focal adhesions (9, 97). This result suggests the existence of elements within the carboxyl terminal portion of the  $\alpha$  subunit that inhibit targeting of the integrin to focal adhesions. In CHO cells, the full-length  $\alpha_{IIb}$  cytoplasmic domain specifies a low affinity state but still constrains the localization of  $\alpha_{IIb}\beta_3$  to focal adhesions. Thus, we suspect that the  $\alpha$  cytoplasmic domain elements that control targeting to focal adhesions and ligand-binding affinity are not identical. These elements may also be involved in the role of  $\alpha$  subunit cytoplasmic domains in more complex cellular functions such as collagen gel contraction, cell migration, and cell adhesion (14, 45, 46).

The cytoplasmic domains of either  $\beta_1$  or  $\beta_3$  were required for the activation of the  $\alpha$  subunit chimeras. Moreover, the capacity of  $\beta_3(S^{752}\rightarrow P)$  to disrupt activation, underscores the specificity of the  $\beta$  subunit requirement. Interestingly,  $\beta_3$  Ser<sup>752</sup> is homologous to a Thr (Fig. 2) involved in the adhesive function of  $\alpha_1\beta_2$  (38). S<sup>752</sup> is not extensively phosphorylated in platelets (40). We have found no obvious difference in the phosphorylation of  $\alpha_6$  cytoplasmic domain chimeras in CHO cells and K562 cells (unpublished results). Thus, the mechanism of the effect of the  $S^{752}\rightarrow P$  mutation on inside-out signaling remains to be resolved.

Mutations that delete portions of the conserved GFFKR sequence appear to reset  $\alpha_{IIb}\beta_3$  to a default high affinity state. As summarized in Table II, a truncation mutant that removes this sequence ( $\alpha_{IIb}\Delta 991$ ) is constitutively active,

**Table II. Summary of Affinity States of the Extracellular Domain: Hinge Mutants**

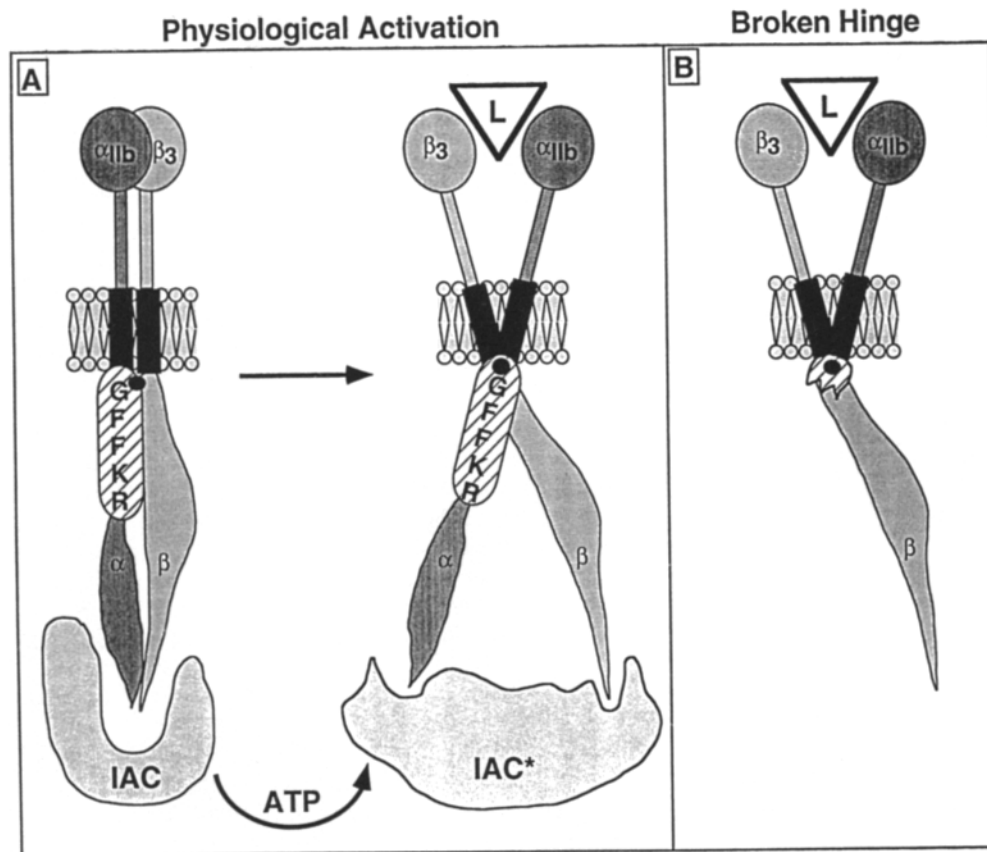
|                        | $\beta 3$ | $\beta 3\Delta 724$ | $\beta 3S752P$ |
|------------------------|-----------|---------------------|----------------|
| $\alpha 11b$           | LO        | LO                  | LO             |
| $\alpha 11b\Delta 991$ | HI*       | <u>HI</u>           | <u>HI</u>      |
| $\alpha 11b\Delta 996$ | LO*       | LO                  | LO             |
| $\alpha L\Delta$       | HI*       | <u>HI</u>           | <u>HI</u>      |
| $\alpha L$             | LO*       | —                   | —              |
| $\alpha R\alpha$       | HI*       | <u>HI</u>           | <u>HI</u>      |

Summary of the affinity states of the extracellular domains of  $\alpha_{11b}\beta_3$  when joined to the indicated cytoplasmic domains and transiently expressed in CHO cells as assayed by PAC1 binding. Affinity states were defined as HI = Activation Index  $\geq 60$  and LO = Activation Index  $\leq 45$ . Asterisks indicate the experiments establishing the role of the GFFKR motif in maintenance of the low affinity state. Double underlining indicates the experiments that establish the lack of importance of the  $\beta$  subunit cytoplasmic domain in supporting the high affinity state in these mutants. In all instances of the high affinity state, treatment with NaN<sub>3</sub> and 2-deoxyglucose did not result in reversion to the low affinity state.

whereas a truncation that retains this sequence ( $\alpha_{11b}\Delta 996$ ) remains inactive. Moreover, a KLGFF loop out mutation in the  $\alpha_L$  cytoplasmic domain or replacement of the  $\alpha$  cytoplasmic domain with a 24-residue random sequence also resulted in high affinity Fg and PAC1 binding. The nature of the high affinity state in these GFFKR mutants differed

markedly from that in the cytoplasmic domain chimeras. Specifically, the deletions resulted in default high affinity in all cells tested. In addition, high affinity was maintained despite addition of metabolic inhibitors and truncation of the  $\beta$  cytoplasmic domain. Of note in this context, a truncated  $\alpha_5$ , lacking GFFKR, is more efficient at assembling a Fn matrix than wild-type  $\alpha_5$  (96). This effect could be due to increased Fn binding, since matrix assembly may be regulated by the affinity state of  $\alpha_5\beta_1$  (26). The GFFKR sequence probably resides in the cell interior because there are generally about 20 hydrophobic residues preceding the charged Lys of the KXGFFKR motif (6, 18, 19, 54, 72, 83, 88–91). Mutations of intramembrane or cytoplasmic (13, 56, 73) residues can lead to constitutive transmembrane conformational changes in other receptors. In integrins, certain cytoplasmic domain mutations also initiate such a constitutive transmembrane alteration.

The high affinity state of  $\alpha_{11b}\beta_3$  provoked by deletion of GFFKR suggests possible mechanisms for transmembrane signaling through integrins. Transmembrane domains of type I membrane proteins such as integrin  $\alpha$  and  $\beta$  subunits are presumably constrained into helices (83). Consequently, transmission of conformational information across the membrane probably involves changes in the spatial relationships of the  $\alpha$  and  $\beta$  subunits. The bacterial aspartate receptor, like integrins (63), has ligand contact sites in each of its two



**Figure 8.** Working hypothetical model of affinity modulation of integrins. Depicted is a schematic that accommodates the results reported here. Cell-type specific energy-dependent cytoplasmic signals target the integrin cytoplasmic domains. The unidentified factor(s) responsible for these signals (represented as *Integrin Activator Complex*) interacts with the cytoplasmic domains to provoke changes in the spatial relationships or conformations of the  $\alpha$  and  $\beta$  subunit cytoplasmic tails. Such changes then traverse the membrane-proximal GFFKR sequence to alter the relationship of  $\alpha$  and  $\beta$  subunit transmembrane domains and ultimately the conformation of the extracellular domain. Although the action is depicted as a scissors, other motions such as pistons, seesaws, or rotation (47, 87) of the subunits are also possible. Since these motions must traverse GFFKR to reach the transmembrane domains, GFFKR could be viewed as a component of a hinge that connects the cytoplasmic and the transmembrane domains. Thus, deletions in GFFKR lock the integrin hinge in an irreversible high affinity state:

membrane-spanning subunits. Ligand binding results in a 1.4 Å shift of membrane-adjacent helices relative to each other. This shift may result in outside-in signaling. In integrins, the cytoplasmic GFFKR sequence could regulate the spatial relationships of the  $\alpha$  and  $\beta$  subunits through interactions with the  $\beta$  subunit resulting in inside-out signaling. Alternatively, GFFKR could bind membrane lipids and perturbations of such interactions could explain lipid modulation of integrin function (17, 37, 84). Finally, cytoplasmic proteins could bind to this sequence. Calreticulin, a protein usually thought to reside in the endoplasmic reticulum, has been reported to bind to a short synthetic peptide containing GFFKR (74). If this association occurs in vivo, then the calreticulin-GFFKR interaction or one like it may set the integrin's default affinity state. A search of the Swissprot Database, using Wordsearch (21), identified the GFFKR sequence in several C4 zinc finger ("steroid fingers") transcription factors (e.g., retinoic acid receptor [60], *Drosophila* tailless [70], Nur/77 [76]). The sequence is in the most highly conserved site in this receptor family (27, 77, 78). Moreover, in the glucocorticoid receptor, this region forms part of an alpha helix that is initiated by two zinc-coordinating cysteines (59). This helix forms contacts with DNA that are critical for activity (27, 59, 77). In integrins, KXGFFKR presumably adjoins an  $\alpha$  helix. By analogy with the steroid fingers, GFFKR may therefore possess  $\alpha$  helical structure and participate in functionally important interactions.

The data presented here suggest a working hypothesis for affinity modulation of integrins (Fig. 8). Cell-type specific and energy-dependent cytoplasmic signals target the integrin cytoplasmic domains. The unidentified factor(s) responsible for these signals (represented as IAC in Fig. 8) require the presence of elements of both cytoplasmic domains. The IAC-cytoplasmic domain interaction could provide changes in the spatial relationships or conformations of the  $\alpha$  and  $\beta$  subunit cytoplasmic tails. Such changes then probably traverse the membrane-proximal GFFKR sequence to influence the relationship of  $\alpha$  and  $\beta$  subunit transmembrane domains and ultimately the conformation of the extracellular domain. Although the action is depicted as a "scissors" in Fig. 8, other motions such as "pistons," "seesaws," or rotation (47, 87) of the subunits are also possible. Since these motions must traverse GFFKR to reach the transmembrane domains, GFFKR could be viewed as a component of a "hinge" that connects the cytoplasmic and the transmembrane domains. Thus, deletions in GFFKR might lock the integrin hinge in an irreversible high affinity state (Fig. 8). In theory, other mutations might lock the hinge in a low affinity state.

We thank Ms. Susan Wynant and Ruby Larson for able secretarial assistance and Jane Forsyth for excellent technical assistance. This is publication number 8232-CVB from The Scripps Research Institute.

Supported in part by National Institutes of Health grants AR27214, HL28235, HL48728, Zeneca Pharmaceuticals, and the University of California TRDRP grant 3RT-0320.

Received for publication 18 November 1993 and in revised form 29 December 1993.

## References

- Adams, J. C., and F. M. Watt. 1990. Changes in keratinocyte adhesion during terminal differentiation: reduction in fibronectin binding precedes alpha 5 beta 1 integrin loss from the cell surface. *Cell*. 63:425-435.
- Albelda, S. M., and C. A. Buck. 1990. Integrins and other cell adhesion molecules. *FASEB (Fed. Am. Soc. Exp. Biol.)*. 4:2868-2880.
- Altieri, D. C. 1991. Occupancy of CD11b/CD18 (Mac-1) divalent ion binding site(s) induces leukocyte adhesion. *J. Immunol.* 147:1891-1898.
- Altieri, D. C., R. Bader, P. M. Mannucci, and T. S. Edgington. 1988. Oligospecificity of the cellular adhesion receptor MAC-1 encompasses an inducible recognition specificity for fibrinogen. *J. Cell Biol.* 107:1893-1900.
- Altruda, F., P. Cervella, G. Tarone, C. Botta, F. Balzac, G. Stefanuto, and L. Silengo. 1990. A human integrin beta 1 subunit with a unique cytoplasmic domain generated by alternative mRNA processing. *Gene (Amst.)*. 95:261-266.
- Argraves, W. S., R. Pytela, S. Suzuki, J. L. Millan, M. D. Pierschbacher, and E. Ruoslahti. 1986. cDNA sequences from the a subunit of the fibronectin receptor predict a transmembrane domain and a short cytoplasmic peptide. *J. Biol. Chem.* 261:12922-12924.
- Bennett, J. S., and G. Vilaire. 1979. Exposure of platelet fibrinogen receptors by ADP and epinephrine. *J. Clin. Invest.* 64:1393-1401.
- Bennett, J. S., S. J. Shattil, J. W. Power, and T. K. Gartner. 1988. Interaction of fibrinogen with its platelet receptor. Differential effects of  $\alpha$  and gamma chain fibrinogen peptides on the glycoprotein IIb-IIIa complex. *J. Biol. Chem.* 263:12948-12953.
- Briesewitz, R., A. Kern, and E. E. Marcantonio. 1993. Ligand-dependent and -independent integrin focal contact localization: the role of the  $\alpha$  chain cytoplasmic domain. *Mol. Biol. Cell*. 4:593-604.
- Brown, P. L., and R. L. Juliano. 1985. Selective inhibition of fibronectin-mediated cell adhesion by monoclonal antibodies to a cell-surface glycoprotein. *Science (Wash. DC)*. 228:1448-1451.
- Brown, N. H., D. L. King, M. Wilcox, and F. C. Kafatos. 1989. Developmentally regulated alternative splicing of drosophila integrin PS2 alpha transcripts. *Cell*. 59:185-195.
- Burger, S. R., M. M. Zutter, S. Sturgill-Koszycki, and S. A. Santoro. 1992. Induced cell surface expression of function  $\alpha 2 \beta 1$  integrin during megakaryocytic differentiation of K562 leukemic cells. *Exp. Cell Res.* 202:28-35.
- Cao, H., L. Bangalore, B. J. Bormann, and D. F. Stern. 1992. A subdomain in the transmembrane domain is necessary for p185neu\* activation. *EMBO (Eur. Mol. Biol. Organ.) J.* 11:923-932.
- Chan, B. M. C., P. D. Kassner, J. A. Schiro, H. R. Byers, T. S. Kupper, and M. E. Hemler. 1992. Distinct cellular functions mediated by different VLA integrin  $\alpha$  subunit cytoplasmic domains. *Cell*. 68:1051-1060.
- Chan, B. S. M., and M. E. Hemler. 1993. Multiple functional forms of the integrin VLA-2 can be derived from a single  $\alpha 2$  cDNA clone: interconversion of forms induced by an anti- $\beta 1$  antibody. *J. Cell Biol.* 120:537-543.
- Chen, Y. P., I. Djaffar, D. Pidard, B. Steiner, A. M. Cieutat, J. P. Caen, and J. P. Rosa. 1992. Ser-752-Pro mutation in the cytoplasmic domain of integrin  $\beta 3$  subunit and defective activation of platelet integrin  $\alpha IIb \beta 3$  (glycoprotein IIb-IIIa) in a variant of Glanzmann thrombasthenia. *Proc. Natl. Acad. Sci. USA*. 89:10169-10173.
- Conforti, G., A. Zanetti, I. Pasquali-Ronchetti, D. Quaglino, Jr., P. Neyroz, and E. Dejana. 1990. Modulation of vitronectin receptor binding by membrane lipid composition. *J. Biol. Chem.* 265:4011-4019.
- Corbi, A. L., T. K. Kishimoto, L. J. Miller, and T. A. Springer. 1988. The human leukocyte adhesion glycoprotein Mac-1 (Complement receptor type 3, CD11b) a subunit: cloning, primary structure, and relation to the integrins, von Willebrand factor and factor B. *J. Biol. Chem.* 263:12403-12411.
- Corbi, A. L., L. J. Miller, K. O'Connor, R. S. Larson, and T. A. Springer. 1987. cDNA cloning and complete primary structure of the alpha subunit of a leukocyte adhesion glycoprotein, p150,95. *EMBO (Eur. Mol. Biol. Organ.) J.* 6:4023-4028.
- Danilov, Y. N., and R. L. Juliano. 1989. Phorbol ester modulation of integrin-mediated cell adhesion: a postreceptor event. *J. Cell Biol.* 108:1925-1933.
- Devereux, J., P. Haeblerli, and O. Smithies. 1984. A comprehensive set of sequence analysis programs for the VAX. *Nucleic Acids Res.* 12:387-395.
- Du, X., M. Gu, J. W. Weisel, C. Nagaswami, J. S. Bennett, R. D. Bowditch, and M. H. Ginsberg. 1993. Long range propagation of conformational changes in integrin  $\alpha_m \beta_3$ . *J. Biol. Chem.* In press.
- Du, X., E. F. Plow, A. L. Frelinger, III, T. E. O'Toole, J. C. Loftus, and M. H. Ginsberg. 1991. Ligands "activate" integrin  $\alpha_m \beta_3$  (platelet GPIIb-IIIa). *Cell*. 65:409-416.
- Dustin, M. L., O. Carpen, and T. A. Springer. 1992. Regulation of locomotion and cell-cell contact area by the LFA-1 and ICAM-1 adhesion receptors. *J. Immunol.* 148:2654-2663.
- Elices, M. J., and M. E. Hemler. 1989. The human integrin VLA-2 is a collagen receptor on some cells and a collagen/laminin receptor on others. *Proc. Natl. Acad. Sci. USA*. 86:9906-9910.
- Faull, R. J., N. L. Kovach, J. M. Harlan, and M. H. Ginsberg. 1993. Affinity modulation of integrin  $\alpha_5 \beta_1$ : regulation of the functional response by soluble fibronectin. *J. Cell Biol.* 121:155-162.
- Freedman, L. P. 1992. Anatomy of the steroid receptor zinc finger region. *Endocr. Rev.* 13:129-145.
- Frelinger, A. L., III, I. Cohen, E. F. Plow, M. A. Smith, J. Roberts,

- S. C.-T. Lam, and M. H. Ginsberg. 1990. Selective inhibition of integrin function by antibodies specific for ligand-occupied receptor conformers. *J. Biol. Chem.* 265:6346-6352.
29. Frelinger, A. L., III, X. Du, E. F. Plow, and M. H. Ginsberg. 1991. Monoclonal antibodies to ligand-occupied conformers of integrin  $\alpha_{\text{IIb}}\beta_3$  (Glycoprotein IIb-IIIa) alters receptor affinity, specificity, and function. *J. Biol. Chem.* 266:17106-17111.
30. Gailit, J., and E. Ruoslahti. 1988. Regulation of the fibronectin receptor affinity by divalent cations. *J. Biol. Chem.* 263:12927-12932.
31. Ginsberg, M. H., X. Du, and E. F. Plow. 1992. Inside-out integrin signaling. *Curr. Opin. Cell Biol.* 4:766-771.
32. Ginsberg, M. H., T. E. O'Toole, J. C. Loftus, and E. F. Plow. 1992. Ligand binding to integrins: dynamic regulation and common mechanisms. *Cold Spring Harbor Symp. Quant. Biol.* 57:221-231.
33. Ginsberg, M. H., L. Taylor, and R. G. Painter. 1980. The mechanism of thrombin-induced platelet factor 4 secretion. *Blood.* 55:661-668.
34. Grant, R. A., and M. B. Zucker. 1980. Effects of chymotrypsin on the release reaction and aggregation of blood platelets (40943). *Proc. Soc. Exp. Biol. Med.* 165:114-117.
35. Haimovich, B., B. J. Aneskievich, and D. Boettiger. 1991. Cellular partitioning of beta-1 integrins and their phosphorylated forms is altered after transformation by Rous sarcoma virus or treatment with cytochalasin D. *Cell Regulation.* 2:271-283.
36. Hemler, M. E. 1990. VLA proteins in the integrin family: structures, functions, and their role on leukocytes. *Annu. Rev. Immunol.* 8:365-400.
37. Hermanowski-Vosatka, A., J. A. G. Van Strijp, W. J. Swiggard, and S. D. Wright. 1992. Integrin modulating factor-1: a lipid that alters the function of leukocyte integrins. *Cell.* 68:341-352.
38. Hibbs, M. L., S. Jakes, S. A. Stacker, R. W. Wallace, and T. A. Springer. 1991. The cytoplasmic domain of the integrin lymphocyte function-associated antigen 1  $\beta$  subunit: sites required for binding to intercellular adhesion molecule 1 and the phorbol ester-stimulated phosphorylation site. *J. Exp. Med.* 174:1227-1238.
39. Hibbs, M. L., H. Xu, S. A. Stacker, and T. A. Springer. 1991. Regulation of adhesion to ICAM-1 by the cytoplasmic domain of LFA-1 integrin beta subunit. *Science (Wash. DC).* 251:1611-1613.
40. Hillery, C. A., S. S. Smyth, and L. V. Parise. 1991. Phosphorylation of human platelet glycoprotein IIIa (GPIIIa). *J. Biol. Chem.* 266:14663-14669.
41. Hogervorst, F., I. Kuikman, A. G. van Kessel, and A. Sonnenberg. 1991. Molecular cloning of the human alpha 6 integrin subunit. Alternative splicing of alpha 6 mRNA and chromosomal localization of the alpha 6 and beta 4 genes. *Eur. J. Biochem.* 199:425-433.
42. Hogervorst, F., I. Kuikman, A. E. G. K. Von dem Borne, and A. Sonnenberg. 1990. Cloning and sequence analysis of beta-4 cDNA: an integrin subunit that contains a unique 118 kd cytoplasmic domain. *EMBO (Eur. Mol. Biol. Organ.) J.* 9:765-770.
43. Hynes, R. O. 1992. Integrins: versatility, modulation, and signaling in cell adhesion. *Cell.* 69:11-25.
44. Hynes, R. O., E. E. Marcantonio, M. A. Stepp, L. A. Urry, and G. H. Yee. 1989. Integrin heterodimer and receptor complexity in avian and mammalian cells. *J. Cell Biol.* 109:409-420.
45. Kassner, P. D., and M. E. Hemler. 1993. Interchangeable  $\alpha$  chain cytoplasmic domains play a positive role in control of cell adhesion mediated by VLA-4, a  $\beta_1$  integrin. *J. Exp. Med.* 178:649-660.
46. Kawaguchi, S., and M. E. Hemler. 1993. Role of the  $\alpha$  subunit cytoplasmic domain in regulation of adhesive activity mediated by the integrin VLA-2. *J. Biol. Chem.* 268:16279-16285.
47. Kim, S.-H., G. G. Prive, J. Yeh, W. G. Scott, and M. V. Milburn. 1992. A model for transmembrane signaling in a bacterial chemotaxis receptor. *Cold Spring Harbor Symp. Quant. Biol.* 57:17-24.
48. Kirchhofer, D., J. Gailit, E. Ruoslahti, J. Grzesiak, and M. D. Pierschbacher. 1990. Cation-dependent changes in the binding specificity of the platelet receptor GPIIb-IIIa. *J. Biol. Chem.* 265:18525-18530.
49. Kirchhofer, D., L. R. Languino, E. Ruoslahti, and M. D. Pierschbacher. 1990. Alpha2 beta1 integrins from different cell types show different binding specificities. *J. Biol. Chem.* 265:615-618.
50. Kouns, W. C., P. Hadvary, P. Haering, and B. Steiner. 1992. Conformational modulation of purified Glycoprotein (GP) IIb-IIIa allows proteolytic generation of active fragments from either active or inactive GPIIb-IIIa. *J. Biol. Chem.* 267:18844-18851.
51. Kovach, N. L., T. M. Carlos, E. Yee, and J. M. Harlan. 1992. A monoclonal antibody to  $\beta_1$  integrin (CD29) stimulates VLA-dependent adherence of leukocytes to human umbilical vein endothelial cells and matrix components. *J. Cell Biol.* 116:499-509.
52. Kunkel, T. A. 1985. Rapid and efficient site specific mutagenesis without phenotypic selection. *Proc. Natl. Acad. Sci. USA.* 82:488-492.
53. Laemmli, U. K. 1970. Cleavage of structural proteins during the assembly of the head of bacteriophage T4. *Nature (Lond.)*. 227:680-685.
54. Larson, R. S., A. L. Corbi, L. Beran, and T. A. Springer. 1989. Primary structure of the leukocyte function-associated molecule-1  $\alpha$  subunit: an integrin with an embedded domain defining a protein superfamily. *J. Cell Biol.* 108:703-712.
55. Larson, R. S., M. L. Hibbs, and T. A. Springer. 1990. The leukocyte integrin LFA-1 reconstituted by cDNA transfection in a nonhematopoietic cell line is functionally active and not transiently regulated. *Cell Regulation.* 1:359-367.
56. Lefkowitz, R. J. 1993. G Protein-coupled receptor kinases. *Cell.* 74:409-412.
57. Loftus, J. C., T. E. O'Toole, E. F. Plow, A. Glass, A. L. Frelinger, III, and M. H. Ginsberg. 1990. A  $\beta_3$  integrin mutation abolishes ligand binding and alters divalent cation-dependent conformation. *Science (Wash. DC).* 249:915-918.
58. Loftus, J. C., E. F. Plow, L. Jennings, and M. H. Ginsberg. 1988. Alternative proteolytic processing of platelet membrane glycoprotein IIb. *J. Biol. Chem.* 263:11025-11028.
59. Luisi, B. F., W. X. Xu, Z. Otwinowski, L. P. Freedman, K. R. Yamamoto, and P. B. Sigler. 1991. Crystallographic analysis of the interaction of the glucocorticoid receptor with DNA [see comments]. *Nature (Lond.)*. 352:497-505.
60. Mangelsdorf, D. J., E. S. Ong, J. A. Dyck, and R. M. Evans. 1990. Nuclear receptor that identifies a novel retinoic acid response pathway. *Nature (Lond.)*. 345:224-229.
61. Marguerie, G. A., and E. F. Plow. 1981. Interaction of fibrinogen with its platelet receptor: kinetics and the effect of pH and temperature. *Biochemistry.* 20:1074-1080.
62. Masumoto, A., and M. E. Hemler. 1993. Multiple activation states of VLA-4. *J. Biol. Chem.* 268:228-234.
63. Milburn, M. V., G. G. Prive, D. L. Milligan, W. G. Scott, J. Yeh, J. Jan-carik, D. E. Koshland, Jr., and S.-H. Kim. 1991. Three-dimensional structures of the ligand-binding domain of the bacterial aspartate receptor with and without a ligand. *Science (Wash. DC).* 225:1342-1347.
64. Munson, P. J., and D. Rodbard. 1980. LIGAND: a versatile computerized approach for characterization of ligand-binding systems. *Anal. Biochem.* 107:220-239.
65. Nemoto, Y., T. Namba, T. Teru-uchi, F. Ushikubi, and N. Morii. 1992. A rho gene product in human blood platelets. *J. Biol. Chem.* 267:20916-20920.
66. Neugebauer, K. M., and L. F. Reichardt. 1991. Cell-surface regulation of BI integrin activity on developing retinal neurons. *Nature (Lond.)*. 350:68-71.
67. O'Toole, T. E., J. C. Loftus, X. Du, A. A. Glass, Z. M. Ruggeri, S. J. Shattil, E. F. Plow, and M. H. Ginsberg. 1990. Affinity modulation of the  $\alpha_{\text{IIb}}\beta_3$  integrin (platelet GPIIb-IIIa) is an intrinsic property of the receptor. *Cell Regulation.* 1:883-893.
68. O'Toole, T. E., J. C. Loftus, E. F. Plow, A. Glass, J. R. Harper, and M. H. Ginsberg. 1989. Efficient surface expression of platelet GPIIb-IIIa requires both subunits. *Blood.* 74:14-18.
69. O'Toole, T. E., D. Mandelman, J. Forsyth, S. J. Shattil, E. F. Plow, and M. H. Ginsberg. 1991. Modulation of the affinity of integrin  $\alpha_{\text{IIb}}\beta_3$  (GPIIb-IIIa) by the cytoplasmic domain of  $\alpha_{\text{IIb}}$ . *Science (Wash. DC).* 254:845-847.
70. Pignoni, F., R. M. Baldarelli, E. Steingrimsson, R. J. Diaz, A. Patapoutian, J. R. Merriam, and J. A. Lengyel. 1990. The Drosophila gene tailless is expressed at the embryonic termini and is a member of the steroid receptor superfamily. *Cell.* 62:151-163.
71. Plow, E. F., R. P. McEver, B. S. Colter, V. L. Woods, Jr., G. A. Marguerie, and M. H. Ginsberg. 1985. Related binding mechanisms for fibrinogen, fibronectin, von Willebrand factor, and thrombospondin on thrombin-stimulated human platelets. *Blood.* 66:724-727.
72. Poncz, M., R. Eisman, R. Heidenreich, S. M. Silver, G. Vilaire, S. Surrey, E. Schwartz, and J. S. Bennett. 1987. Structure of the platelet membrane glycoprotein IIb. Homology to the alpha subunits of the vitronectin and fibronectin membrane receptors. *J. Biol. Chem.* 262:8476-8482.
73. Robinson, P. R., G. B. Cohen, E. A. Zhukovsky, and D. D. Oprian. 1992. Constitutively active mutants of rhodopsin. *Neuron.* 9:719-725.
74. Rojiani, M. V., B. B. Finlay, V. Gray, and S. Dedhar. 1991. In vitro interaction of a polypeptide homologous to human Ro/SS-A antigen (calreticulin) with a highly conserved amino acid sequence in the cytoplasmic domain of integrin alpha subunits. *Biochemistry.* 30:9859-9866.
75. Ruoslahti, E. 1991. Integrins. *J. Clin. Invest.* 87:1-5.
76. Ryseck, R. P., H. Macdonald-Bravo, M. G. Mattei, S. Ruppert, and R. Bravo. 1989. Structure, mapping and expression of a growth factor inducible gene encoding a putative nuclear hormonal binding receptor. *EMBO (Eur. Mol. Biol. Organ.) J.* 8:3327-3335.
77. Schwabe, J. W. R., and D. Rhodes. 1991. Beyond zinc fingers: steroid hormone receptors have a novel structural motif for DNA recognition. *TIBS (Trends Biochem. Sci.)*. 16:291-296.
78. Seagraves, W. A. 1991. Something old, something new: the steroid receptor superfamily in Drosophila. *Cell.* 67:225-228.
79. Shattil, S. J., and J. S. Brugge. 1991. Protein tyrosine phosphorylation and the adhesive functions of platelets. *Curr. Opin. Cell Biol.* 3:869-879.
80. Shattil, S. J., M. Cunningham, T. Wiedmer, J. Zhao, P. J. Sims, and L. F. Brass. 1992. Regulation of glycoprotein IIb-IIIa receptor function studied with platelets permeabilized by the pore-forming complement proteins C5b-9. *J. Biol. Chem.* 267:18424-18431.
81. Shattil, S. J., J. A. Hoxie, M. Cunningham, and L. F. Brass. 1985. Changes in the platelet membrane glycoprotein IIb-IIIa complex during

- platelet activation. *J. Biol. Chem.* 260:11107-11114.
82. Sims, P. J., M. H. Ginsberg, E. F. Plow, and S. J. Shattil. 1991. Effect of platelet activation on the conformation of the plasma membrane glycoprotein IIb-IIIa complex. *J. Biol. Chem.* 266:7345-7352.
  83. Singer, S. J. 1990. The structure and insertion of integral proteins in membranes. *Annu. Rev. Cell Biol.* 6:247-296.
  84. Smyth, S. S., and L. V. Parise. 1993. Regulation of ligand binding to glycoprotein IIb-IIIa (integrin  $\alpha$ IIb $\beta$ 3) in isolated platelet membranes. *Biochem. J.* 292:749-758.
  85. Smyth, S. S., C. A. Hillery, and L. V. Parise. 1992. Fibrinogen binding to purified platelet glycoprotein IIb-IIIa (integrin  $\alpha$ IIb $\beta$ 3) is modulated by lipids. *J. Biol. Chem.* 267:15568-15577.
  86. Springer, T. A. 1990. Adhesion receptors of the immune system. *Nature (Lond.)* 346:425-434.
  87. Stoddard, B. L., H.-P. Biemann, and D. E. Koshland, Jr. 1992. Receptors and transmembrane signalling. *Cold Spring Harbor Symp. Quant. Biol.* 57:1-15.
  88. Suzuki, S., W. S. Argraves, H. Arai, L. R. Languino, M. D. Pierschbacher, and E. Ruoslahti. 1987. Amino acid sequence of the vitronectin receptor alpha subunit and comparative expression of adhesion receptor mRNAs. *J. Biol. Chem.* 262:14080-14085.
  89. Takada, Y., M. J. Elices, C. Crouse, and M. E. Hemler. 1989. The primary structure of the  $\alpha^4$  subunit of VLA-4: homology to other integrins and a possible cell-cell adhesion function. *EMBO (Eur. Mol. Biol. Organ.) J.* 8:1361-1368.
  90. Takada, Y., and M. E. Hemler. 1989. The primary structure of the VLA-2/collagen receptor  $\alpha^2$  subunit (platelet GPIa): homology to other integrins and the presence of a possible collagen-binding domain. *J. Cell Biol.* 109:397-407.
  91. Takada, Y., E. Murphy, P. Pil, C. Chen, M. H. Ginsberg, and M. E. Hemler. 1991. Molecular cloning and expression of the cDNA for alpha3 subunit of human alpha3beta1 (VLA-3), an integrin receptor for fibronectin, laminin and collagen. *J. Cell Biol.* 115:257-266.
  92. van Kuppevelt, T. H., L. R. Languino, J. O. Gailit, S. Suzuki, and E. Ruoslahti. 1989. An alternative cytoplasmic domain of the integrin beta 3 subunit. *Proc. Natl. Acad. Sci. USA.* 86:5415-5418.
  93. Weisel, J. W., C. Nagaswami, G. Vialaire, and J. S. Bennett. 1992. Examination of the platelet membrane glycoprotein IIb-IIIa complex and its interaction with fibrinogen and other ligands by electron microscopy. *J. Biol. Chem.* 267:16637-16643.
  94. Weitzman, J. B., R. Pasqualini, Y. Takada, and M. E. Hemler. 1993. The function and distinctive regulation of the integrin VLA-3 in cell adhesion, spreading, and homotypic cell aggregation. *J. Biol. Chem.* 268:8651-8657.
  95. Werb, Z., P. M. Tremble, B. Behrendtsen, E. Crowley, and C. H. Damsky. 1989. Signal transduction through the fibronectin receptor induces collagenase and stromelysin gene expression. *J. Cell Biol.* 109:877-889.
  96. Wu, C., J. S. Bauer, R. L. Juliano, and J. A. McDonald. 1993. The  $\alpha_4\beta_1$  integrin fibronectin receptor, but not the  $\alpha_4$  cytoplasmic domain, functions in an early and essential step in fibronectin matrix assembly. *J. Biol. Chem.* In press.
  97. Ylanne, J., Y. P. Chen, T. E. O'Toole, J. C. Loftus, Y. Takada, and M. H. Ginsberg. 1993. Distinct functions of integrin  $\alpha$  and  $\beta$  subunit cytoplasmic domains in cell spreading and formation of focal adhesions. *J. Cell Biol.* 122:223-233.
  98. Zucker, M. B., and V. T. Nachmias. 1985. Platelet activation. *Arteriosclerosis.* 5:2-18.