

Corrigendum

EMBO CONFERENCE REPORT

Protein phosphorylation and protein phosphatases, De Panne, Belgium, September 19–24, 1999

Stanislaw Zolnierowicz and Mathieu Bollen

The EMBO Journal, **19**, 483–488, 2000

The conference that was reported on in this paper was co-sponsored by EMBO and FEBS and was organized as an EMBO Conference/FEBS Advanced Course.

Erratum

U snRNP assembly in yeast involves the La protein

Dahai Xue, Douglas A. Rubinson, Barbara K. Pannone, Christopher J. Yoo and Sandra L. Wolin

The EMBO Journal, **19**, 1650–1660, 2000

The publishers apologize for the poor printing quality of Figure 5. The figure is reprinted below.

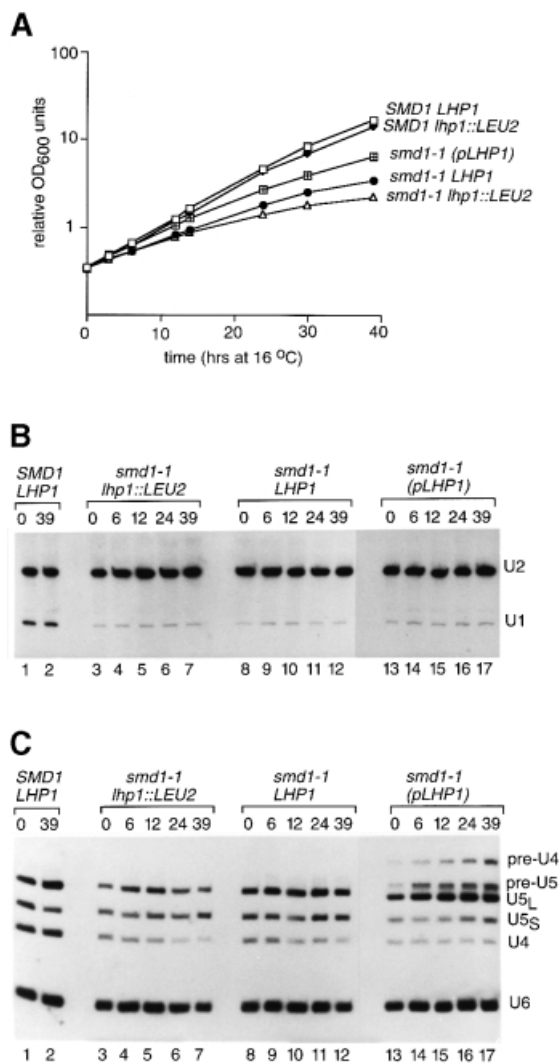


Fig. 5. Analysis of U RNA levels during growth of *smd1-1* cells at 16°C. (A) The growth of wild-type cells, *SMD1 lhp1::LEU2* cells and *smd1-1* cells containing either no *LHP1* (*smd1-1 lhp1::LEU2*), chromosomal *LHP1* (*smd1-1 LHP1*) or plasmid *LHP1* [*smd1-1 (pLHP1)*] is compared. Cells were grown to OD = 0.3 at 30°C and switched to 16°C at time 0. (B and C) At intervals after the switch to 16°C, RNA was extracted from the strains and subjected to Northern analysis. The blot was probed to detect U1 and U2 RNAs (B) or U4, U5 and U6 RNAs (C).