

# p21-activated kinase 4 interacts with integrin $\alpha v \beta 5$ and regulates $\alpha v \beta 5$ -mediated cell migration

Hongquan Zhang,<sup>1</sup> Zhilun Li,<sup>1</sup> Eva-Karin Viklund,<sup>1</sup> and Staffan Strömblad<sup>1,2</sup>

<sup>1</sup>Karolinska Institutet, Department of Microbiology, Pathology, and Immunology, SE-141 86 Huddinge, Sweden

<sup>2</sup>Södertörns Högskola, SE-141 89 Huddinge, Sweden

**P**21-activated kinase 1 (PAK1) can affect cell migration (Price et al., 1998; del Pozo et al., 2000) and modulate myosin light chain kinase and LIM kinase, which are components of the cellular motility machinery (Edwards, D.C., L.C. Sanders, G.M. Bokoch, and G.N. Gill. 1999. *Nature Cell Biol.* 1:253–259; Sanders, L.C., F. Matsumura, G.M. Bokoch, and P. de Lanerolle. 1999. *Science.* 283: 2083–2085). We here present a novel cell motility pathway by demonstrating that PAK4 directly interacts with an integrin intracellular domain and regulates carcinoma cell motility in an integrin-specific manner. Yeast two-hybrid screening identified PAK4 binding to the cytoplasmic domain of the integrin  $\beta 5$  subunit, an association that was also found in mammalian cells between endogenous PAK4 and integrin

$\alpha v \beta 5$ . Furthermore, we mapped the PAK4 binding to the membrane-proximal region of integrin  $\beta 5$ , and identified an integrin-binding domain at aa 505–530 in the COOH terminus of PAK4. Importantly, engagement of integrin  $\alpha v \beta 5$  by cell attachment to vitronectin led to a redistribution of PAK4 from the cytosol to dynamic lamellipodial structures where PAK4 colocalized with integrin  $\alpha v \beta 5$ . Functionally, PAK4 induced integrin  $\alpha v \beta 5$ -mediated, but not  $\beta 1$ -mediated, human breast carcinoma cell migration, while no changes in integrin cell surface expression levels were observed. In conclusion, our results demonstrate that PAK4 interacts with integrin  $\alpha v \beta 5$  and selectively promotes integrin  $\alpha v \beta 5$ -mediated cell migration.

## Introduction

The p21-activated kinase (PAK)\* family contains homologous serine/threonine protein kinases that can act as downstream effectors of the small GTPases Cdc42 and Rac (Lim et al., 1996; Bagrodia and Cerione, 1999; Bar-Sagi and Hall, 2000). So far, six human PAKs (hPAKs) have been identified, and based on homology, they can be classified into two groups: group I including PAK1–3 and group II including PAK4–6 (Dan et al., 2001b). A marked difference between the two PAK groups is the autologous inhibitory sequence in the NH<sub>2</sub>-terminal regulatory domain found in group I PAKs, with no obvious homologous sequence in group II (Dan et al., 2001b). Due to the presence of an inhibitory sequence that binds to the COOH terminus of group I PAKs, PAK1

displays little or no endogenous kinase activity, but can be activated by the presence of GTP-bound active Cdc42 or Rac, which opens up the folded structure of PAK1 (Lei et al., 2000). PAK1 is known to regulate cell morphology and cytoskeletal reorganization (Sells et al., 1997). Furthermore, membrane-targeted PAK1 has been found to induce neurite outgrowth from PC12 cells (Daniels et al., 1998). In fibroblasts, activated PAK1 has been shown to localize in the leading edge of motile cells (Sells et al., 1999), and in human endothelial cells, PAK1 has been suggested to coordinate the formation of new substrate adhesions at the front of the cell with contraction and detachment at the rear (Kiosses et al., 1999), indicating that PAK1 may be involved in the regulation of cell motility.

PAK4 is the first identified member of the group II PAKs, and is implicated in cytoskeletal reorganization and filopodia formation (Abo et al., 1998). Importantly, PAK4 was recently found to be overexpressed in 78% of a variety of human cancer cell lines, an overexpression that might be mediated by gene amplification and may play a role in Ras-mediated transformation (Callow et al., 2002). In addition, overexpression of a hyperactive PAK4 mutant can protect cells from apoptosis induced by TNF $\alpha$  (Gnesutta et al., 2001). The capability of PAK4 to promote cell survival is

Address correspondence to Staffan Strömblad, Karolinska Institutet, Department of Microbiology, Pathology, and Immunology, Huddinge University Hospital F46, SE-141 86 Huddinge, Sweden. Tel.: 46-8-585-81032. Fax: 46-8-585-81020. E-mail: staffan.stromblad@impi.ki.se

\*Abbreviations used in this paper: hPAK, human PAK; IBD, integrin-binding domain; IP, immunoprecipitation; KD, kinase domain; LIMK, LIM kinase; MBT, mushroom body tiny gene product; MLCK, myosin light chain kinase; mPAK, mouse PAK; PAK, p21-activated kinase; PLL, poly-L-lysine; VN, vitronectin; wt, wild-type.

Key words: cell motility; cell signaling; integrin; lamellipodia; p21-activated kinase

Table 1. Identified interactors with human integrin  $\beta 5$  subunit cytoplasmic domain by yeast two-hybrid screening

Interacting cDNA clones	Number of clones	GenBank/EMBL/DBJ accession no.
PAK4	6	AJ011855
Myosin X	5	AJ249706
Bodenin (ICAP)	3	AJ001373
Miz-1	9	AF039567
Mouse cDNA clone	1	AA445617
Mouse myotubes MPLRB5	1	AA816006

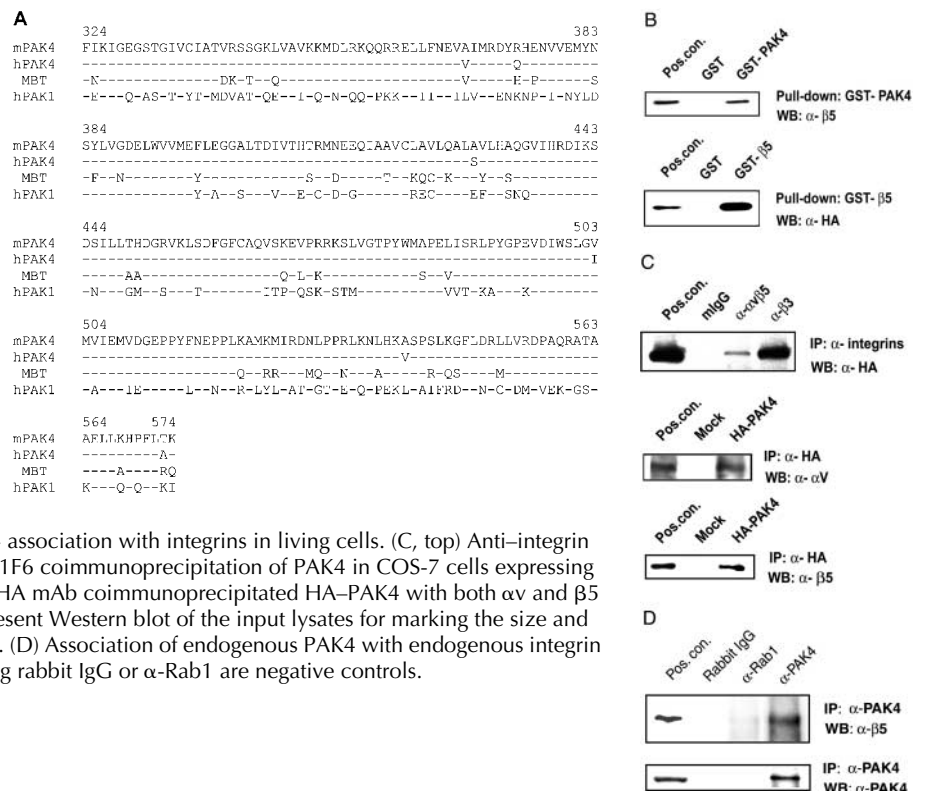
Six clones were identical to mPAK4. Five clones represented mouse myosin-X (Yonezawa et al., 2000) and bodenin is the mouse version of human integrin cytoplasmic domain-associated protein (ICAP) (Faisst and Gruss, 1998). Miz-1 is a Myc-interacting zinc finger protein (Seoane et al., 2001). The other two clones have unknown functions.

shared with PAK1, but the anti-apoptotic properties of PAK1 and PAK4 may be mediated by distinct mechanisms (Schurmann et al., 2000; Gnesutta et al., 2001). In addition, hyperactive PAK4 is able to transform fibroblasts to grow in soft agar in an anchorage-independent manner (Qu et al., 2001), perhaps in part due to its ability to promote cell survival.

Integrins are heterodimeric transmembrane receptors and the major group of receptors for ECM proteins. Integrins are essential during development, in tissue homeostasis, and in the progression of various diseases (Hynes, 1992; Giancotti and Ruoslahti, 1999). By mediating cellular attachment to ECM, integrins are also a central part of the cellular motility machinery, where they are regulated by intracellular signaling molecules, which influence integrin localization, clustering, and binding to the ECM. In addition, integrin engagement to the ECM initiates various signaling events, e.g., activation of the ERK1/2 pathway, which is also important for the regulation of cell motility (Giancotti and Ruoslahti, 1999).

Previous studies have shown that  $\alpha v$  integrins are up-regulated or activated in migratory and invasive mechanisms in vivo, including wound healing, angiogenesis, and metastasis (Felding-Habermann and Cheresch, 1993; Brooks et al., 1994; Friedlander et al., 1995; Strömlblad et al., 1996; Brooks et al., 1997). Integrin  $\alpha v \beta 5$  is the predominant vitronectin (VN) receptor for carcinoma cells in vivo, because most carcinoma specimens from patients express  $\alpha v \beta 5$  but not  $\alpha v \beta 3$  (Lehmann et al., 1994; Jones et al., 1997). Importantly, integrin  $\alpha v \beta 5$  has been found to be functionally involved in growth factor-induced carcinoma cell migration in vitro and metastasis in vivo (Klemke et al., 1994; Yebra et al., 1996; Brooks et al., 1997). Furthermore, activation of integrin  $\alpha v \beta 5$  is implicated in VEGF-induced angiogenesis (Friedlander et al., 1995). In this report, we present a novel role for PAK in cell motility. We found that PAK4 directly interacts with the integrin  $\beta 5$  subunit and specifically regulates  $\alpha v \beta 5$ -mediated cell migration.

Figure 1. PAK4 interacts with the integrin  $\beta 5$  subunit. (A) Amino acid sequence comparison of mPAK4 KD, found by the yeast two-hybrid screening with hPAK4, *Drosophila* MBT (MBT), and hPAK1 KDs. Dashes stand for identical amino acids and the variations of amino acids are indicated by letters in hPAK4, MBT, and hPAK1 sequences. The mPAK4 KD is numbered according to that of hPAK4 (Abo et al., 1998). (B) PAK4 association with integrin  $\beta 5$  in GST pull-down assays. GST-PAK4 KD fusion protein pulled down endogenous integrin  $\beta 5$  in cell lysates (top panel). GST- $\beta 5$  cytoplasmic domain fusion protein pulled down overexpressed HA-PAK4 (bottom). The positive controls represent Western blot of the input lysates for marking the size and showing the presence of integrin  $\beta 5$  and PAK4. (C, top) Anti-integrin  $\beta 3$  mAb AP3 and anti-integrin  $\alpha v \beta 5$  mAb P1F6 coimmunoprecipitation of PAK4 in COS-7 cells expressing HA-PAK4. (C, middle and bottom) An anti-HA mAb coimmunoprecipitated HA-PAK4 with both  $\alpha v$  and  $\beta 5$  integrin subunits. The positive controls represent Western blot of the input lysates for marking the size and showing the presence of integrins and PAK4. (D) Association of endogenous PAK4 with endogenous integrin  $\alpha v \beta 5$  in MCF-7 cells analyzed by IP. IP using rabbit IgG or  $\alpha$ -Rab1 are negative controls.



## Results

### PAK4 directly interacts with the integrin $\beta$ 5 subunit cytoplasmic domain

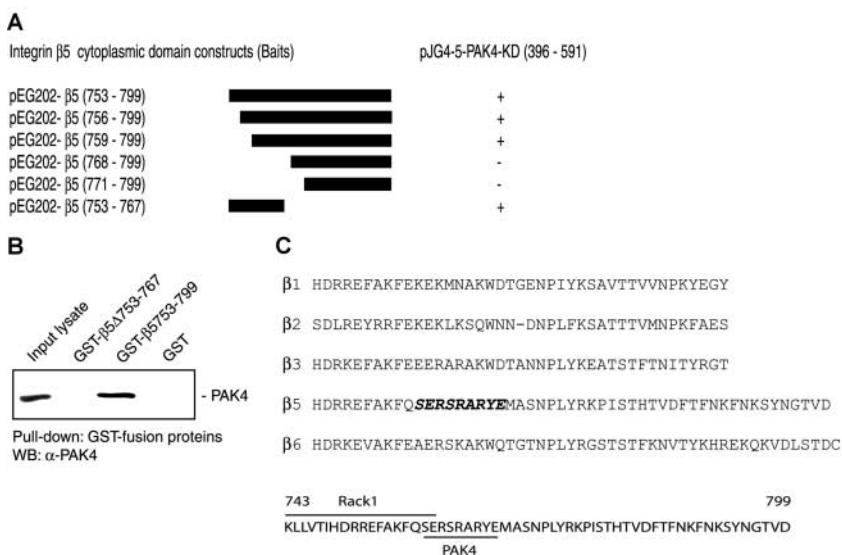
By means of yeast two-hybrid screening of a 19-d mouse embryo cDNA library and following remating tests, we identified six known or hypothetic proteins specifically interacting with the human integrin  $\beta$ 5 cytoplasmic domain (Table I). 25 clones were found to interact with the integrin  $\beta$ 5 cytoplasmic domain. Sequence analysis revealed that six of these mouse cDNA clones encoded a sequence highly homologous to hPAK4 kinase domain (KD), and were therefore identified as mouse PAK4 (mPAK4), which strongly and specifically interacted with integrin  $\beta$ 5 cytoplasmic domain in the repeated yeast mating tests (unpublished data). An aa sequence comparison of the KD of mPAK4 with hPAK4, hPAK1, and the *Drosophila* PAK homologue mushroom body tiny gene product (MBT) (Melzig et al., 1998) is shown in Fig. 1 A. mPAK4 KD shares 98% homology in aa sequence with hPAK4 KD, 83% with MBT KD, and 56% with hPAK1. The interaction of PAK4 with integrin  $\beta$ 5 was then further analyzed by independent biochemical methods both in vitro and in living cells. In GST pull-down assays, we found an association of integrin  $\beta$ 5 from cell lysates to a purified GST-fused PAK4 KD and of PAK4 to a purified GST-fused  $\beta$ 5 cytoplasmic domain (Fig. 1 B). In addition, HA-tagged PAK4 was coimmunoprecipitated with integrins  $\beta$ 3 and  $\alpha$ v $\beta$ 5 in living cells (Fig. 1 C, top). In Fig. 1 C, the  $\beta$ 3 immunoprecipitation (IP) appears to bring down more PAK4 than the IP for  $\alpha$ v $\beta$ 5. However, the expression levels of the two integrins are different (unpublished data) and the two antibodies used may be differently efficient for IP. Therefore, differences in PAK4 amounts in this IP cannot be used to indicate relative binding strengths. Furthermore, the reverse IP of HA-PAK4 brought down both integrin  $\alpha$ v and  $\beta$ 5 subunits from a cell lysate (Fig. 1 C, middle and bottom), whereas IP of an irrelevant HA-tagged p21<sup>CIP1</sup> did not (unpublished data). Importantly, by IP we also found an association of endogenous PAK4 with endogenous integrin  $\alpha$ v $\beta$ 5 in living cells (Fig. 1 D).

### PAK4 interacts with the membrane-proximal region of the integrin $\beta$ 5 cytoplasmic domain

To determine which region within the integrin cytoplasmic domain interacts with PAK4, we generated cDNAs encoding various regions of the cytoplasmic domain of integrin  $\beta$ 5 by PCR and cloned them into the bait vector pEG202. Yeast mating experiments were performed using a prey vector that contains PAK4 KD (aa 239–591) and the various bait vectors. The PAK4-binding region was mapped to aa 759–767 within the integrin  $\beta$ 5 cytoplasmic domain (Fig. 2 A). Furthermore, association of endogenous PAK4 to the membrane-proximal region of integrin  $\beta$ 5 subunit was verified by a GST pull-down assay (Fig. 2 B), in which PAK4 associated with GST- $\beta$ 5 cytoplasmic domain, but not with a GST- $\beta$ 5 deletion mutant lacking the PAK4-binding region identified by yeast mating tests. Amino acid sequences of other integrin  $\beta$  subunits corresponding to the PAK4-binding region of integrin  $\beta$ 5 cytoplasmic domain were aligned (Fig. 2 C), displaying a moderate sequence homology.

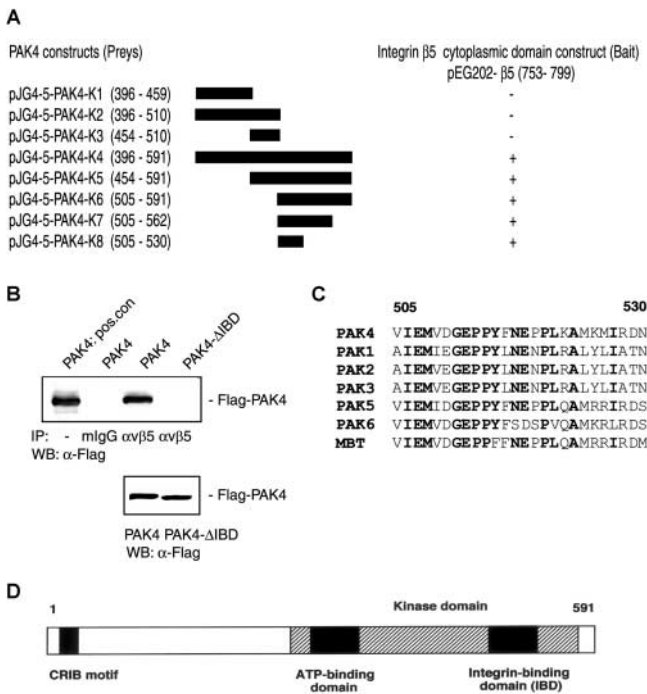
### Integrin $\beta$ 5 interacts with a PAK4 COOH-terminal region

To determine the region within PAK4 that interacts with the integrin  $\beta$ 5 cytoplasmic domain, we generated cDNAs encoding various regions of the PAK4 KD that were amplified by PCR and cloned into the prey vector pJG4-5. Yeast mating experiments were performed using a bait vector that contains the integrin  $\beta$ 5 cytoplasmic domain (aa 753–799) and the various prey vectors. We mapped the integrin-binding region to aa 505–530 within the PAK4 KD by yeast two-hybrid mating tests (Fig. 3 A), and further confirmed the requirement of this region of PAK4 for association with integrin  $\alpha$ v $\beta$ 5 in mammalian cells by IP using a PAK4 deletion mutant (Fig. 3 B). Therefore, we denote this region as the integrin-binding domain (IBD) in PAK4. The aa sequences of other PAK family members, including the *Drosophila* PAK4 homologue MBT, were aligned in comparison with the PAK4 IBD (Fig. 3 C). The IBD region is highly homologous among PAK family members, suggesting that family mem-



### Figure 2. Mapping of the PAK4 binding region within the integrin $\beta$ 5 cytoplasmic domain.

(A) Mapping of the PAK4-binding region in the integrin  $\beta$ 5 cytoplasmic domain. Various regions of the integrin  $\beta$ 5 cytoplasmic domain were cloned into the bait vector pEG202 and then mated with PAK4 KD in the prey vector in a yeast two-hybrid assay. The PAK4 binding region was mapped to aa 759–767 of the  $\beta$ 5 cytoplasmic domain. (B) Association of endogenous PAK4 with the membrane-proximal region within integrin  $\beta$ 5 cytoplasmic domain was examined by a GST pull-down assay, including GST fused to a  $\beta$ 5 deletion mutant lacking the PAK4-binding region mapped by yeast two-hybrid analysis. (C) Sequence comparison of the PAK4-binding region of integrin  $\beta$ 5 with other integrin cytoplasmic domains (top). The Rack1- (Liliental and Chang, 1998) and PAK4-binding regions within integrin  $\beta$ 5 are indicated (bottom).

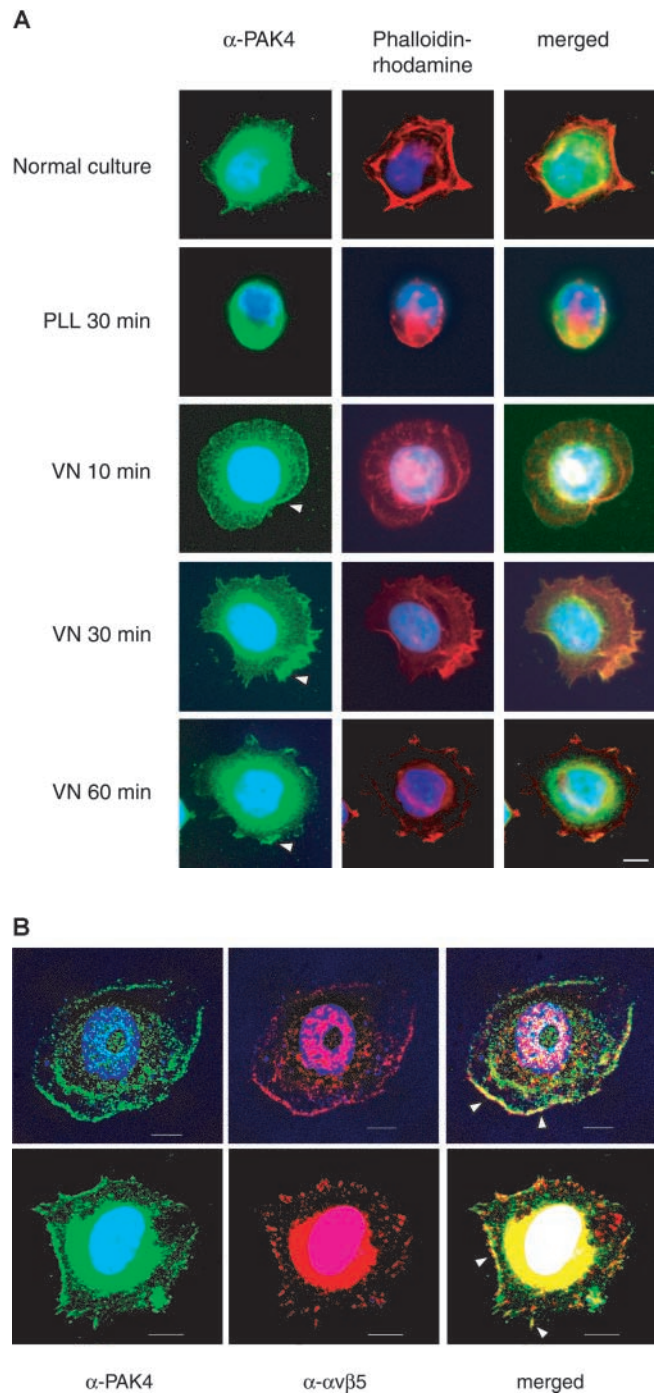


**Figure 3. Mapping of the integrin  $\beta 5$ -binding region within the PAK4 KD.** (A) Various regions of the PAK4 KD were cloned into the prey vector pJG4-5 and then mated in a yeast two-hybrid assay with the integrin  $\beta 5$  cytoplasmic domain in the bait vector. Amino acids 505–530 in the PAK4 KD were identified as the responsible region for interaction with the integrin  $\beta 5$  cytoplasmic domain. Therefore, PAK4 aa 505–530 is designated as the IBD. (B) PAK4- $\Delta$ IBD with deletion of aa 505–530 was incapable to associate with integrin  $\alpha \nu \beta 5$  in mammalian cells, as examined by an IP analysis. Lower panel shows expression levels of PAK4 and PAK4- $\Delta$ IBD in lysates used for IP. (C) The corresponding sequences in other PAK family members are compared with PAK4 IBD with identical amino acids in bold. (D) Schematic illustration of the PAK4 structure, including the Cdc42/Rac interactive domain ATP-binding domain, IBD, and KD within PAK4.

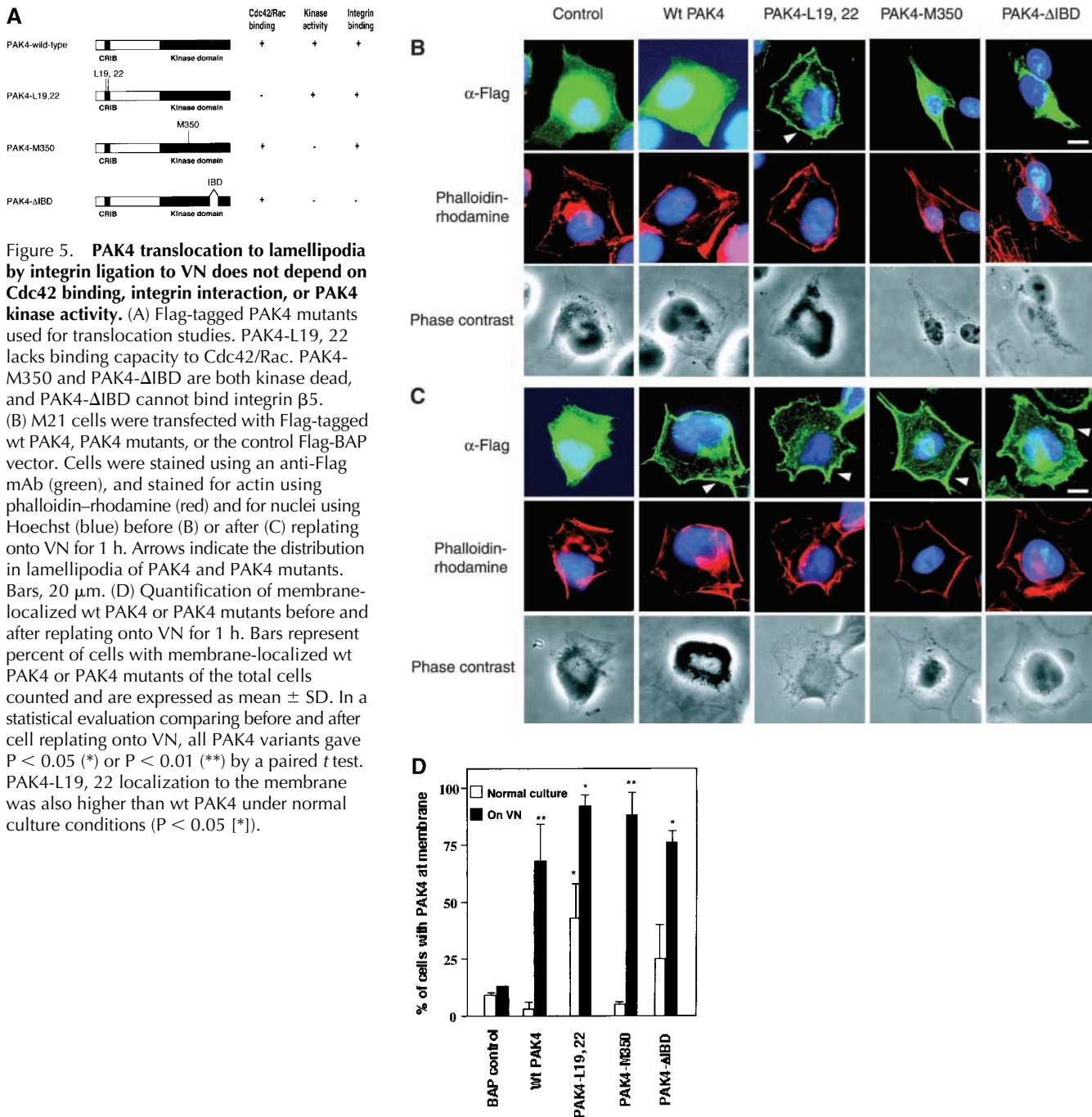
bers other than PAK4 might also hold the capacity to bind to integrin cytoplasmic domains. In addition, a schematic illustration of known PAK4 functional motifs indicates the location of IBD within the PAK4 KD (Fig. 3 D).

**Translocation of PAK4 to lamellipodia by integrin ligation to VN and colocalization with integrin  $\alpha \nu \beta 5$**

Given that PAK4 associates with integrin  $\alpha \nu \beta 5$ , we analyzed the effect on cellular distribution of endogenous PAK4 by  $\alpha \nu \beta 5$ -mediated attachment to VN in MCF-7 cells, which exclusively use integrin  $\alpha \nu \beta 5$  for attachment to VN (unpublished data). Before replating, we observed a cytosolic distribution of PAK4 in MCF-7 cells under normal culture conditions (Fig. 4 A). We then examined the endogenous PAK4 distribution after replating cells onto VN. Interestingly, we found a remarkable redistribution of PAK4 to forming lamellipodial structures in the cellular periphery as early as 10 min after replating on VN. With longer cell attachment, PAK4 was distributed into membrane ruffles and leading edges. However, cells replated onto poly-L-lysine (PLL) that are attached in an integrin-independent manner remained unspread with PAK4 dis-



**Figure 4. Relocalization of PAK4 to the cell membrane and colocalization of PAK4 and integrin  $\alpha \nu \beta 5$  in MCF-7 cells.** (A) MCF-7 human breast carcinoma cells, under normal culture conditions or replated onto VN or PLL for indicated times, were stained for endogenous PAK4 using an anti-PAK4 pAb (green), for actin using phalloidin-rhodamine (red), and for nuclei by Hoechst (blue). Arrowheads indicate PAK4 localized to lamellipodia or ruffles after replating onto VN. (B) MCF-7 cells were replated onto VN and costained for endogenous PAK4 (green) and endogenous integrin  $\alpha \nu \beta 5$  (red). In the top panel (30 min after replating), integrin  $\alpha \nu \beta 5$  was found at lamellipodia (arrowheads). In the bottom panel (60 min after replating), integrin  $\alpha \nu \beta 5$  has started to form focal complexes at lamellipodia where it colocalized with PAK4 (arrowheads). Bars, 10  $\mu$ m.



**Figure 5. PAK4 translocation to lamellipodia by integrin ligation to VN does not depend on Cdc42 binding, integrin interaction, or PAK4 kinase activity.** (A) Flag-tagged PAK4 mutants used for translocation studies. PAK4-L19, 22 lacks binding capacity to Cdc42/Rac. PAK4-M350 and PAK4- $\Delta$ IBD are both kinase dead, and PAK4- $\Delta$ IBD cannot bind integrin  $\beta 5$ .

(B) M21 cells were transfected with Flag-tagged wt PAK4, PAK4 mutants, or the control Flag-BAP vector. Cells were stained using an anti-Flag mAb (green), and stained for actin using phalloidin-rhodamine (red) and for nuclei using Hoechst (blue) before (B) or after (C) replating onto VN for 1 h. Arrows indicate the distribution in lamellipodia of PAK4 and PAK4 mutants. Bars, 20  $\mu$ m. (D) Quantification of membrane-localized wt PAK4 or PAK4 mutants before and after replating onto VN for 1 h. Bars represent percent of cells with membrane-localized wt PAK4 or PAK4 mutants of the total cells counted and are expressed as mean  $\pm$  SD. In a statistical evaluation comparing before and after cell replating onto VN, all PAK4 variants gave  $P < 0.05$  (\*) or  $P < 0.01$  (\*\*) by a paired *t* test. PAK4-L19, 22 localization to the membrane was also higher than wt PAK4 under normal culture conditions ( $P < 0.05$  [\*]).

tributed in the cytosol (Fig. 4 A). The fact that attachment to VN is mediated by integrin  $\alpha v \beta 5$ , whereas attachment to PLL is integrin independent, indicates that integrin ligation may specifically stimulate relocalization of PAK4 to lamellipodia. Importantly, the redistribution of PAK4 upon cell attachment may allow PAK4 to associate with integrins in lamellipodia, which are sites of integrin attachment to the underlying ECM. In addition, we observed a similar relocalization of PAK4 in M21 human melanoma cells and ECV 304 human bladder carcinoma cells (unpublished data), suggesting that the relocalization of PAK4 upon replating onto VN occurs in various cell types.

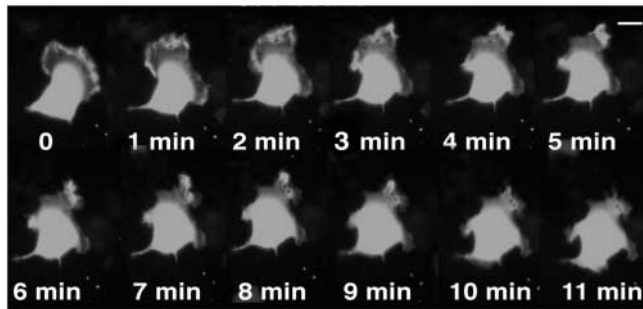
To examine whether the lamellipodia-localized PAK4 could physically meet with integrin  $\alpha v \beta 5$  at the cell mem-

brane, we replated MCF-7 cells onto VN and costained the cells for endogenous PAK4 and endogenous integrin  $\alpha v \beta 5$ . As shown in Fig. 4 B, PAK4 and integrin  $\alpha v \beta 5$  colocalized in lamellipodia shortly after replating onto VN. PAK4 may therefore be able to engage in integrin-mediated cellular functions.

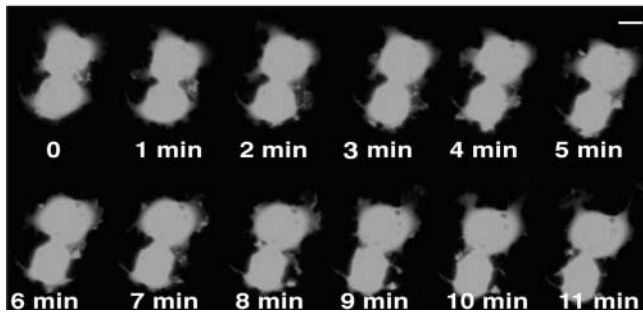
#### Relocalization of PAK4 to lamellipodia does not require its kinase activity, integrin interaction, or Cdc42/Rac binding

Given that PAK4 undergoes membrane relocalization upon attachment onto VN, it was of interest to elucidate whether the relocalization of PAK4 is dependent on its integrin or Cdc42/Rac interaction and/or its kinase activity. Therefore,

## A EGFP-PAK4



## B EGFP



**Figure 6. Dynamic localization of PAK4 in lamellipodia.** MCF-7 human breast carcinoma cells stably transfected with EGFP-PAK4 or EGFP were plated onto VN and visualized by immunofluorescent microscopy after being allowed to attach for 30 min. Images were taken by a CCD camera every minute and the displayed cells are representative for the respective transfection. (A) EGFP-PAK4 is transiently localized in actively reshaping lamellipodia. (B) EGFP control exhibits only nuclear or perinuclear localization. Bars, 20  $\mu$ m.

we constructed Flag-tagged PAK4 mutants that lack the binding capacity for Cdc42/Rac (PAK4-L19, 22), the IBD (PAK4- $\Delta$ IBD), or PAK4 kinase activity (PAK4-M350) as illustrated in Fig. 5 A. Human M21 melanoma cells were transfected with these PAK4 mutants and compared with cells transfected with wild-type (wt) Flag-PAK4 and a vector containing a nonrelated Flag-tagged BAP protein. Under normal culture conditions, wt PAK4 mainly localized in the cytosol (Fig. 5 B). However, upon cell replating onto VN, the majority of cells transfected with PAK4 displayed a relocalization to lamellipodia (Fig. 5 C). A similar relocalization to lamellipodia upon replating was also observed for the kinase-dead and  $\Delta$ IBD PAK4 mutants, both of them lacking kinase activity (unpublished data) and PAK4- $\Delta$ IBD also lacking integrin-binding capacity (Fig. 3 B). However, the PAK4-L19, 22 that lacks GTPase-binding capacity was found in lamellipodia in almost half of the cells in regular culture and was then redistributed to the membrane in the remaining cells upon replating onto VN. A quantification of the PAK4 relocalization by counting the number of cells with membrane-localized PAK4 is displayed in Fig. 5 D. Taken together, these results suggest that PAK4 relocalization to lamellipodia does not require its kinase activity or integrin or Cdc42/Rac binding. However, the Cdc42/Rac binding capacity of PAK4 might be inhibitory for PAK4 localization in lamellipodia.

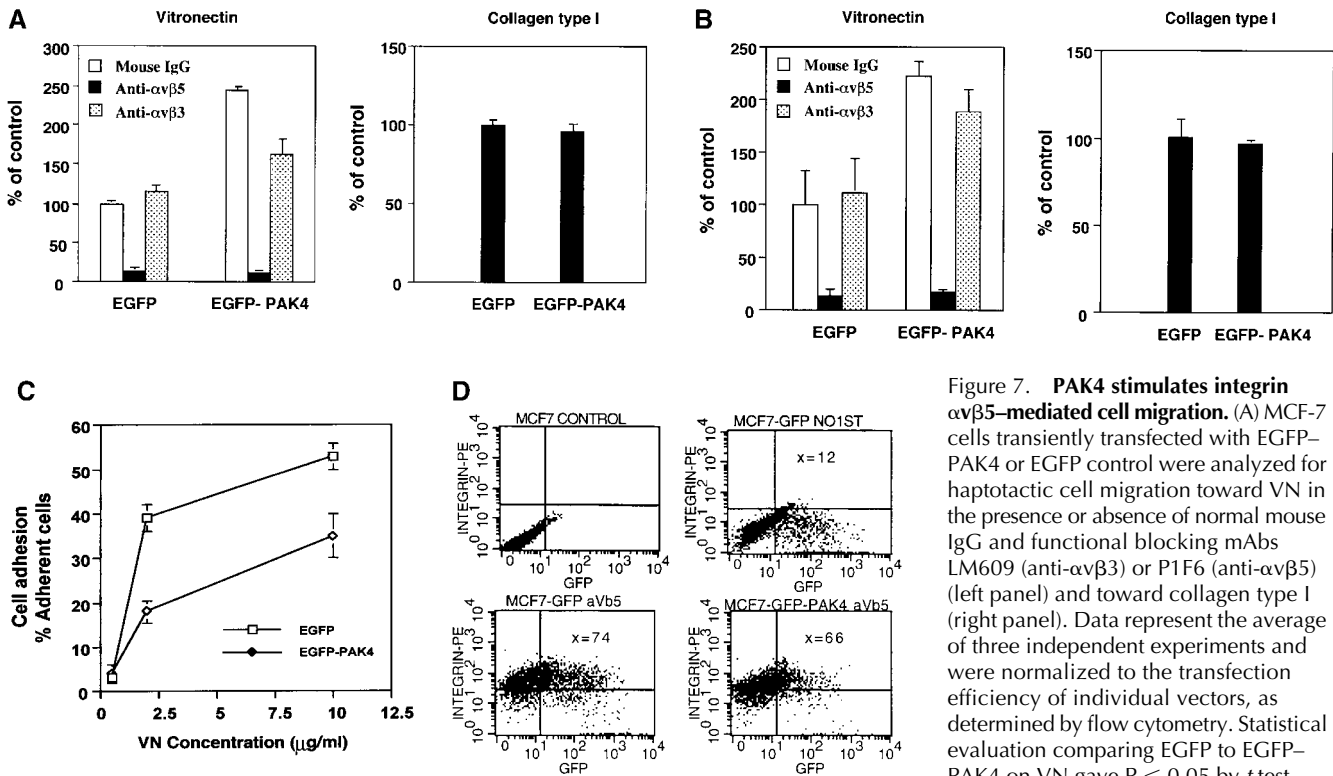
### Dynamic distribution of PAK4 in actively reshaping lamellipodia

To study the temporal and spatial localization of PAK4 in living cells, we established MCF-7 human breast carcinoma cells stably expressing a fluorescent EGFP-PAK4 fusion protein. These cells were plated onto VN-coated glass slides and analyzed by time-lapse fluorescent microscopy. Consistent with our immunofluorescent staining of endogenous PAK4 lamellipodial localization in MCF-7 cells (Fig. 4 A) and of Flag-tagged PAK4 (Fig. 5), EGFP-PAK4 also localized in lamellipodial protrusions after replating onto VN (Fig. 6 A). Interestingly, the PAK4 distribution changed in a highly dynamic fashion, whereas EGFP control cells exhibited only cytoplasmic and nuclear or perinuclear distribution (Fig. 6 B). Furthermore, like endogenous PAK4 (Fig. 4 B), EGFP-PAK4 was also found to partially colocalize with integrin  $\alpha$  $\beta$ 5 in lamellipodia (unpublished data). The transient localization of PAK4 in lamellipodia coinciding with lamellipodia of actively forming and retracting extensions indicates that PAK4 may modulate these processes. Given that PAK4 associated with integrin  $\alpha$  $\beta$ 5 and colocalized with integrin  $\alpha$  $\beta$ 5 in lamellipodia, the dynamic distribution of PAK4 in lamellipodia may reflect a transient and periodic interaction between PAK4 and integrin  $\alpha$  $\beta$ 5. This led us to hypothesize that PAK4 may not only interact with  $\alpha$  $\beta$ 5, but that PAK4 may also influence integrin-mediated motile events.

### PAK4 stimulates integrin $\alpha$ $\beta$ 5-specific cell migration in human breast carcinoma cells

Based on the above hypothesis, we examined the potential effect of PAK4 on  $\alpha$  $\beta$ 5-mediated cell motility. Integrins  $\alpha$  $\beta$ 3 and  $\alpha$  $\beta$ 5 both participate in cell attachment and cell migration toward VN (Wayner et al., 1991). To assess the integrin  $\alpha$  $\beta$ 5-mediated cell motility, it is ideal to use a cell line expressing  $\alpha$  $\beta$ 5, but not  $\alpha$  $\beta$ 3, because  $\alpha$  $\beta$ 3 usually dominates as VN receptor for cell migration if present, which is the case in most cultured cell lines. Therefore, we chose MCF-7 human breast carcinoma cells, which express  $\alpha$  $\beta$ 5 but not  $\alpha$  $\beta$ 3 (unpublished data; Brooks et al., 1997; Wong et al., 1998). In addition, we found that both PAK4 mRNA and protein are highly expressed in MCF-7 cells compared with a number of other tumor cell lines tested (unpublished data), consistent with the recent study by Callow et al. (2002).

In a haptotactic cell migration assay, we found that transient expression of EGFP-PAK4 in MCF-7 cells specifically induced MCF-7 cell migration on VN, but not integrin  $\beta$ 1-mediated cell migration on collagen type I (Fig. 7 A). Furthermore, EGFP-PAK4-induced cell migration was blocked by a functional blocking anti- $\alpha$  $\beta$ 5 mAb, but not by an anti- $\alpha$  $\beta$ 3 mAb (Fig. 7 A, left). Taken together, this demonstrates that PAK4 specifically induces integrin  $\alpha$  $\beta$ 5-mediated cell motility. Moreover, stable expression of EGFP-PAK4 in MCF-7 cells yielded numerically almost identical results on induction of  $\alpha$  $\beta$ 5-mediated cell migration as transient PAK4 expression, but did not influence cell motility on collagen (Fig. 7 B). Similarly, stable overexpression of



**Figure 7. PAK4 stimulates integrin  $\alpha\beta 5$ -mediated cell migration.** (A) MCF-7 cells transiently transfected with EGFP-PAK4 or EGFP control were analyzed for haptotactic cell migration toward VN in the presence or absence of normal mouse IgG and functional blocking mAbs LM609 (anti- $\alpha\beta 3$ ) or P1F6 (anti- $\alpha\beta 5$ ) (left panel) and toward collagen type I (right panel). Data represent the average of three independent experiments and were normalized to the transfection efficiency of individual vectors, as determined by flow cytometry. Statistical evaluation comparing EGFP to EGFP-PAK4 on VN gave  $P < 0.05$  by  $t$  test. (B) Cell migration analyzed as in A of

MCF-7 cells stably expressing EGFP-PAK4 or EGFP. All results are expressed as mean values  $\pm$  SEM of three independent experiments using triplicate analysis in each experiment. Statistical evaluation by  $t$  test gave  $P < 0.05$  for EGFP-PAK4 compared with EGFP on VN. (C) Overexpression of PAK4 decreases cell adhesion on VN. Cell attachment of MCF-7 cells stably expressing EGFP-PAK4 or EGFP at different coating concentrations of VN was determined. (D) Transient EGFP-PAK4 expression does not change the membrane expression levels of integrin  $\alpha\beta 5$  in MCF-7 cells as measured by flow cytometry.  $\alpha\beta 5$  expression was plotted versus EGFP content and the  $\alpha\beta 5$  cell surface levels in EGFP-transfected cells (bottom left) was compared with that in EGFP-PAK4 cells (bottom right). Values indicate the mean fluorescence of  $\alpha\beta 5$  staining in EGFP-positive cells. Unstained MCF-7 cells (top left) and staining without primary mAb (top right) were used to determine specificity and background.

a Flag-tagged constitutively active PAK4 mutant (S474E; Callow et al., 2002) induced MCF-7 cell migration to VN to the same degree as EGFP-PAK4 (unpublished data). This indicates that overexpression of EGFP-PAK4 may saturate PAK4-inducible motility in this cell type, which might be explained by the observation that a large GST fusion partner at the NH<sub>2</sub> terminus of PAK1 causes constitutive PAK1 activation, suggesting that the EGFP fusion to PAK4 may cause PAK4 activation.

Given that cell adhesion is the basis for cell migration, it was interesting to examine whether PAK4 may also impact cell adhesion on VN. To this end, MCF-7 cells were transfected with EGFP-PAK4 or control EGFP. As shown in Fig. 7 C, overexpression of EGFP-PAK4 markedly inhibited cell adhesion on VN compared with EGFP-transfected cells. One possibility that may explain the inhibition of cell adhesion on VN could be a down-regulation of integrin  $\alpha\beta 5$  cell surface expression by PAK4. To examine this, we performed a flow cytometry analysis to determine the cell membrane distribution of integrin  $\alpha\beta 5$ . However, PAK4 overexpression did not change the abundance of integrin  $\alpha\beta 5$  expressed on the cell membrane (Fig. 7 D), or that of integrin  $\beta 1$  (unpublished data). This suggests that PAK4 inhibition of cell adhesion might be caused by an alteration of integrin  $\alpha\beta 5$  binding capacity for its ligand VN.

## Discussion

### PAK interaction with integrins

Previously, only one intracellular molecule, Rack1 (Liliental and Chang, 1998), had been identified to directly interact with the integrin  $\beta 5$  cytoplasmic domain. By yeast two-hybrid screening, we now add six novel intracellular interactors of integrin  $\beta 5$ , including PAK4. The PAK4 binding sites within the integrin  $\beta 5$  cytoplasmic domain was mapped to a conserved, membrane-proximal region (aa 759–767). Interestingly, the Rack1-binding site within  $\beta 5$  cytoplasmic domain was also mapped to the membrane-proximal region partially overlapping with the PAK4-binding region, but more extended to the NH<sub>2</sub> terminus (Fig. 2 C). Rack1 is a receptor for PKC and may play a role in linking PKC to integrins. Slightly upstream of the PAK4-binding region, a conserved integrin membrane-proximal region of  $\beta 3$  has been shown to form a hinge with the integrin  $\alpha_{IIB}$  subunit, thereby controlling extracellular ligand-binding affinity of integrin  $\alpha_{IIB}\beta 3$  (Hughes et al., 1995). In addition, a conserved region in the  $\beta 2$  integrin membrane-proximal region (733–742), which almost corresponds to the PAK4-binding region in  $\beta 5$ , has been suggested to be critical for endoplasmic reticulum retention,  $\alpha$ - $\beta$  dimerization, and cytoskeletal association of leukocyte integrin  $\alpha\text{L}\beta 2$  (Pardi et al., 1995). The conserved  $\beta$ -integrin membrane-proximal region has also been shown

to mediate integrin oligomerization, inhibition of integrin conformation, and constraining of an integrin in the inactive state (Zage and Marcantonio, 1998; Bodeau et al., 2001; Lu et al., 2001). However, although it is possible that PAK4 binding to integrin  $\beta 5$  membrane-proximal region may affect the association between the integrin  $\alpha v$  and  $\beta 5$  subunits or binding between  $\alpha v\beta 5$  and VN, further studies are required to elucidate if modulation of the PAK4-binding region of  $\beta 5$  can affect integrin hinge formation or the integrin extracellular binding affinity to the ECM.

Intriguingly, interactions between PAK family members and integrins may be conserved, because the IBD within PAK family members is highly conserved (Fig. 3 C) and because we found that in addition to PAK4, both hPAK1 and the *Drosophila* PAK4 homologue MBT are able to interact with various integrin  $\beta$  subunits (unpublished data). The wide interaction spectra between integrins and PAK family members of man and *Drosophila* suggest that the capacity for these interactions might be highly conserved during evolution and may thus fulfill vital functions in various species.

### Relocalization of PAK4 to lamellipodia

PAK4 has been found to be localized in the cytosol and in the Golgi apparatus (Abo et al., 1998; Callow et al., 2002). In the current study, we found that PAK4 relocalized to motile structures in the cell membrane upon replating onto VN, including relocalization of PAK4 to lamellipodia and ruffles. In comparison, PAK1 can localize to focal adhesions upon replating (unpublished data; Manser et al., 1997). The NH<sub>2</sub>-terminal regulatory domain of PAK1:1–329, including its Cdc42/Rac-binding motif, is sufficient to localize PAK1 to focal adhesions, and PAK1 has been indicated to be recruited to focal adhesions dependent on its binding to Cdc42/Rac (Manser et al., 1997; Brown et al., 2002). However, in a substantial part of the cells (>40%), a PAK4 mutant deficient in binding to Cdc42/Rac localized to the membrane before cell replating onto VN, whereas wt PAK4 only localized to the membrane in a few cells before replating. This suggests that binding to Cdc42/Rac might negatively regulate PAK4 membrane relocalization, which is consistent with the finding by Abo et al. (1998) that overexpression of activated Cdc42 results in localization of PAK4 in the Golgi apparatus. In addition, binding to Nck has been shown to mediate PAK1 membrane localization (Lu et al., 1997), whereas Pix, but not Nck, binding is required for PAK1:1–329 localization to focal adhesions (Brown et al., 2002). However, the Nck- and Pix-binding regions of PAK1 are not conserved in PAK4, which might explain why PAK1 can be readily detected in focal adhesions (unpublished data; Manser et al., 1997), whereas PAK4 instead mainly relocalizes to lamellipodia upon replating and is rarely found in focal adhesions (unpublished data). It is unclear how PAK4 relocalization is mediated, but it appears to be independent of its catalytic activity, Cdc42/Rac binding, and integrin binding capacity, because PAK4 mutants deficient in these capacities all still relocalized to lamellipodia upon replating. However, it will be highly interesting to elucidate how relocalization of PAK4 is regulated, because the PAK4 localization at motile cellular structures may be important for its function in motility.

### Role of PAK4 in the regulation of cell motility

Cell migration is important in many physiological and pathological processes and the regulation of cell motility is complicated, including both extracellular and intracellular events. Among these, PAK1 has been found to regulate cell motility in mouse fibroblasts (Sells et al., 1999), endothelial cells (Kiosses et al., 1999; Master et al., 2001), and tracheal smooth muscle cells (Dechert et al., 2001). Previous studies have suggested that the regulation of phosphorylation of myosin light chain kinase and LIM kinase (LIMK) by PAK1 and PAK2 might account for the role of these PAK family members in regulation of cell motility on various ECM substrates, but without displaying any apparent integrin specificity (Edwards et al., 1999; Sanders et al., 1999; Goeckeler et al., 2000). However, in this report, we demonstrate that PAK4 specifically induces  $\alpha v\beta 5$ -mediated cell migration on VN, whereas  $\beta 1$  integrin-mediated cell migration on collagen type I is not influenced.

A recent study indicated that unlike PAK1, PAK4 is unable to phosphorylate myosin light chain kinase (Qu et al., 2001), which may rule out one possible route by which PAK4 could stimulate cell migration. Therefore, the mechanisms for induction of cell motility by PAK1 and PAK4 may be distinct, which is also supported by their distinct localization in cell adhesive structures of focal adhesions and lamellipodia, respectively. PAK4 was recently found to interact with LIMK1, to phosphorylate LIMK1 and stimulate the ability of LIMK1 to phosphorylate cofilin (Dan et al., 2001a). As a consequence, PAK4 and LIMK1 may cooperatively regulate cytoskeletal changes that impact cell motility. However, the PAK4 interaction with integrin  $\beta 5$  cytoplasmic domain may also directly modulate the extracellular motility machinery, including cell adhesion to ECM for which PAK4 has been indicated to play a functional role (Qu et al., 2001). PAK4 binding to integrin might directly effect the integrin function, and thereby cell motility, and/or localize PAK4 effects to integrin-proximal sites of migratory regulation. For example, we found that PAK4 can phosphorylate the integrin  $\beta 5$  cytoplasmic domain and this way might affect the integrin  $\alpha v\beta 5$  extracellular binding capacity (unpublished data).

Taken together, our study suggests a model where PAK4 binds to integrin  $\beta 5$  cytoplasmic domain in motile cellular structures and modulates integrin  $\alpha v\beta 5$ -mediated cell migration. This may be brought about by PAK4 regulation of cytoskeletal components and/or by directly influencing integrin  $\alpha v\beta 5$  function, thereby facilitating cell migration.

### Possible role of PAK4 in tumor progression and metastasis

Intriguingly, PAK4 was recently found to be overexpressed in 78% of an array of human cancer cell lines where its function may be to promote cell transformation (Callow et al., 2002). In addition to this potential function, our study indicates a role for overexpressed PAK4 in breast carcinoma cell migration, suggesting a potential role also in metastasis. The predominant VN receptor in human carcinomas in vivo is integrin  $\alpha v\beta 5$  (Lehmann et al., 1994; Jones et al., 1997), an integrin that can be activated by growth factors for cell migration (Klemke et al., 1994; Yebra et al., 1996). In fact, growth factor stimulation of breast and pancreatic carci-



noma cells has been shown to cause tumor dissemination and metastasis *in vivo*, which was functionally linked to activation of integrin  $\alpha\beta 5$ -mediated cell migration (Brooks et al., 1997). Given that PAK4 stimulated  $\alpha\beta 5$ -mediated cell migration in breast carcinoma cells, elucidation of its potential role in growth factor signaling pathways governing integrin  $\alpha\beta 5$  activation will be very interesting; for example if PAK4 might effect src and/or FAK pathways recently implicated in integrin  $\alpha\beta 5$  activation (Eliceiri et al., 2002). In addition, stimulation of angiogenesis by VEGF or TGF- $\alpha$  depends on integrin  $\alpha\beta 5$  activation (Friedlander et al., 1995). Therefore, it will also be interesting to assess the potential role of PAK4 in *in vivo* progression of carcinoma metastasis as well as angiogenesis.

In conclusion, we report a novel cell motility pathway mediated by the serine/threonine kinase PAK4 that directly interacts with integrin  $\alpha\beta 5$  and selectively induces  $\alpha\beta 5$ -mediated cell motility, a mechanism previously demonstrated to mediate carcinoma dissemination.

## Materials and methods

### Cell culture, cDNA expression vectors, and antibody production

African green monkey kidney COS-7 cells, human breast carcinoma MCF-7 cells, and human melanoma M21 cells were grown in DME supplemented with 10% FCS, 10  $\mu\text{g}/\text{ml}$  Gentamycin (Life Technologies). Clones of MCF-7 cells stably expressing EGFP or EGFP-PAK4 were selected in the presence of 0.5 mg/ml G418 (Life Technologies). Pools of G418-resistant EGFP and EGFP-PAK4-expressing clones were used for cell migration studies. hPAK4 expression vector HA-PAK4-SR $\alpha 3$  was provided by Dr. Audrey Minden (Columbia University, New York, NY). Flag-tagged hPAK4 was constructed by cloning the full-length hPAK4 cDNA into the vector p3 $\times$ FLAG-CMV-10 (Sigma-Aldrich). EGFP-PAK4 expression vector was generated by cloning the full-length hPAK4 cDNA into pEGFP-C2 (CLONTECH Laboratories, Inc.) and confirmed by sequencing. The PAK4 mutants PAK4-M350, PAK4-L19, 22, and PAK4- $\Delta$ IBD (deletion of aa 505–530) were created by site-directed mutagenesis using the QuickChange kit (Stratagene), followed by sequence confirmation of the mutated regions. For anti-PAK4 antibody production, a PAK4 NH<sub>2</sub>-terminal sequence (aa 116–323) was amplified by PCR and cloned into the GST fusion protein expression vector pGEM-1 $\lambda$ T (Amersham Biosciences). GST fusion proteins were purified using glutathione-Sepharose beads (Amersham Biosciences), according to the manufacturer's protocol, followed by separation in PAGE and extraction of the GST-PAK4 fusion protein. Two rabbits were immunized with the GST-PAK4 fusion protein and the sera collected by Dr. Arturo Galvani at Pharmacia Corp. (Nerviano, Italy). The anti-PAK4 antibody was purified by protein G affinity column (Pierce Chemical Co.) after absorption by bacteria powder containing expressed GST protein. The purified anti-PAK4 antibody was tested for reactivity with other PAK family members and found to be specific for PAK4 (unpublished data).

### Yeast two-hybrid screening and yeast mating tests

Integrin  $\beta 5$  cytoplasmic domain (aa 753–799; Ramaswamy and Hemler, 1990) was fused to Lex A-DBD in the pEG202 vector (OriGene). The insert sequence and reading frame were confirmed by sequencing. Approximately  $2 \times 10^7$  yeast transformants of a 19-d mouse whole embryo expression library (OriGene) were pooled and screened by the activation of leucine and  $\beta$ -galactosidase marker genes. 98 clones were His<sup>+</sup> Leu<sup>+</sup> Trp<sup>+</sup> Ura<sup>+</sup>  $\beta$ -gal<sup>+</sup> and 25 of them specifically interacted with  $\beta 5$  cytoplasmic domain in yeast mating tests. Sequence analysis and bioinformatics studies indicated that 6 out of 25  $\beta 5$  cytoplasmic domain-interacting sequences represented mPAK4. For yeast mating tests, different regions of the integrin  $\beta 5$  cytoplasmic domain were cloned into the pEG202 bait vector using yeast strain RFY206 as host, and different regions of the KD of hPAK4 were cloned into pJG4-5 prey vector using yeast strain EGY48 as host.

### Protein-protein interaction assays

COS-7 cells were transfected with 4  $\mu\text{g}$  expression vector HA-PAK4-SR $\alpha 3$  by LipofectAmine plus (Life Technologies). Cells were harvested 48 h after transfection and lysed in RIPA buffer (1 $\times$  PBS, pH 7.4, 0.5% sodium de-

oxycholate, 1% Triton X-100, 0.1% SDS) with protease inhibitors (0.5  $\mu\text{g}/\text{ml}$  leupeptin, 1 mM EDTA, 1  $\mu\text{g}/\text{ml}$  pepstatin A, 0.2 mM PMSF). Approximately 500  $\mu\text{g}$  of precleared lysates were immunoprecipitated by 4  $\mu\text{g}$  rabbit anti-HA pAb Y11 (Santa Cruz Biotechnology, Inc.), anti- $\alpha\beta 5$  mAb P1F6 (Life Technologies), or anti- $\beta 3$  mAb AP3 (GTI) and were separated and probed with rabbit anti-human integrin  $\beta 5$  cytoplasmic pAb, anti-integrin  $\alpha\beta$  pAb (Chemicon), or anti-HA tag mAb F-7 (Santa Cruz Biotechnology, Inc.) and then with an HRP-conjugated secondary pAb (Jackson ImmunoResearch Laboratories) and visualized by ECL technique as previously described (Bao et al., 2002). Alternatively, IP of endogenous PAK4 was performed using 2  $\mu\text{g}$  anti-PAK4 pAb. For testing the *in vivo* association of PAK4- $\Delta$ IBD mutant with integrin  $\alpha\beta 5$ , COS-7 cells were transfected with Flag-PAK4 and Flag-PAK4- $\Delta$ IBD. Precleared lysates (100  $\mu\text{g}$ ) were immunoprecipitated by 6  $\mu\text{l}$  ascites fluid of anti-integrin  $\alpha\beta 5$  mAb P1F6 (Life Technology) or rabbit IgG or  $\alpha$ -Rab pAb (C-19; Santa Cruz Biotechnology, Inc.) followed by Western blot analysis using anti-Flag tag mAb M2 (Sigma). As positive controls for the Western blot analyses, 10–15  $\mu\text{g}$  lysates were applied without IP. To make GST fusion proteins, PAK4 KD (aa 324–591) and  $\beta 5$  (aa 753–799) cytoplasmic domains were cloned separately into the GST fusion protein expression vector pGEM-1 $\lambda$ T (Amersham Biosciences). GST fusion proteins were purified using glutathione-Sepharose beads (Amersham Biosciences) according to the manufacturer's protocol. To pull down hPAK4, 2  $\mu\text{g}$  of GST  $\beta 5$  tail fusion protein was mixed with 500  $\mu\text{g}$  cell lysate containing HA-hPAK4 in RIPA buffer. Reciprocally, to pull down the endogenous integrin  $\beta 5$  subunit, 200  $\mu\text{g}$  COS-7 cell lysate was mixed with 5  $\mu\text{g}$  purified GST-hPAK4 KD fusion protein in RIPA buffer and incubated overnight at 4°C. Glutathione-Sepharose beads (Amersham Biosciences) were used to capture the GST fusion proteins and the interacting proteins. The bound proteins were visualized by Western blotting with mAb F-7 or rabbit anti-human integrin  $\beta 5$  cytoplasmic domain pAb (Chemicon), respectively.

### Fluorescent microscopy and time-lapse video microscopy

MCF-7 cells stably expressing EGFP-PAK4 or EGFP were established under the selection of G418 (0.5 mg/ml). Cells were fixed by 4% paraformaldehyde after attachment on VN. For staining of endogenous PAK4 in MCF-7 cells, rabbit anti-PAK4 pAb was used. For integrin  $\alpha\beta 5$  staining, cells were replated in the absence of FCS and Mn<sup>2+</sup> (RPMI 1640, 2 mM CaCl<sub>2</sub>, 1 mM MgCl<sub>2</sub>, and 0.5% BSA), and anti-integrin  $\alpha\beta 5$  mAb clone 15F11 (Chemicon) was used for staining. Anti-Flag mAb M2 (Sigma-Aldrich) was used for Flag tag staining. For quantification of cells with lamellipodial PAK4 localization, six microscopic fields were chosen randomly and counted directly through 20 $\times$  objective. Statistical analysis was performed using Origin version 6.0 (Microcal Software, Inc.). Stained cells were photographed by fluorescent microscopy using a digital camera. Time-lapse studies were performed  $\sim$ 30 min after plating EGFP-PAK4 stably transfected MCF-7 cells onto VN-coated chamber slides in the absence of FCS using a fluorescent microscope (Leica). Pictures were captured every minute using Slidebook software version 2.06 (Intelligent Imaging Innovations, Inc.). The acquired pictures were further processed and assembled using Adobe Photoshop<sup>®</sup> 5.0 and Adobe Illustrator<sup>®</sup> 8.0.

### Cell migration and cell adhesion assays

Haptotactic cell migration assays were performed using Transwell chambers (Costar Inc.) with 8.0  $\mu\text{m}$  pore size. The Transwell membranes were coated with VN (10  $\mu\text{g}/\text{ml}$ ), collagen type I (10  $\mu\text{g}/\text{ml}$ ), or 1% BSA at the bottom surfaces for 2 h at 37°C. MCF-7 cells were transfected with EGFP or EGFP-PAK4 for 48 h, and then cells were trypsinized, washed, and counted in the presence of soybean trypsin inhibitor (0.25 mg/ml). Cells ( $1 \times 10^5$ ) were then added on the top of Transwell membranes and allowed to migrate toward VN or collagen type I in the presence or absence of anti-integrin  $\alpha\beta 3$  mAb LM609 (Chemicon) or anti- $\alpha\beta 5$  mAb P1F6 (25  $\mu\text{g}/\text{ml}$ ) for 6 h at 37°C in migration buffer (RPMI 1640, 2 mM CaCl<sub>2</sub>, 1 mM MgCl<sub>2</sub>, 0.2 mM MnCl<sub>2</sub>, and 0.5% BSA). After thoroughly cleaning the upper chambers of the Transwells, the migrated cells expressing EGFP or EGFP-PAK4 were counted using a fluorescent microscope; typically 12 microscopic fields were randomly chosen and counted. For comparison, the number of migrating cells was calibrated to the transfection efficiency within the cell population as determined by flow cytometry. Quantification of stably transfected cells was performed by staining using crystal violet followed by counting of random microscopy fields. For the cell adhesion assay, nontreated 48-well plates (Corning Costar Corp.) were used. Wells were coated with 0.5–10  $\mu\text{g}/\text{ml}$  VN overnight at 4°C. 1% heat-denatured BSA was applied to block nonspecific adhesion. MCF-7 cells stably transfected with EGFP-PAK4 or EGFP control were plated into the wells in triplicate at  $5 \times 10^4$  cells/well in cell adhesion buffer (RPMI 1640, 2 mM

CaCl<sub>2</sub>, 1 mM MgCl<sub>2</sub>, 0.2 mM MnCl<sub>2</sub>, and 0.5% BSA) and allowed to attach for 60 min. After careful washing of nonbound cells using adhesion buffer, MTT was used to quantify the number of stably transfected cells attached.

### Flow cytometry analyses

The efficiency for cell transfections and the cell surface expression levels of integrins were analyzed by measurement of EGFP content and phycoerythrin staining intensity, respectively, by FACScan<sup>®</sup> flow cytometer using CellQuest software (Becton Dickinson) after staining with anti-integrin  $\alpha\beta 5$  mAb P1F6 and a phycoerythrin-conjugated secondary goat anti-mouse pAb (Jackson ImmunoResearch Laboratories).

We thank Drs. Audrey Minden and Erkki Ruoslahti (Burnham Institute, La Jolla, CA) for providing the hPAK4 and the human integrin  $\beta 5$  cDNA, respectively. We thank Dr. Arturo Galvani for help with the anti-PAK4 serum production and Dr. Pontus Aspenström (Ludwig Institute for Cancer Research, Uppsala, Sweden) for critical reading of the manuscript.

This study was supported by grants to S. Strömlad from the Swedish Cancer Society, the Swedish Science Research Council, the Swedish Strategic Research Foundation, and the Magnus Bergvall Foundation, and to H. Zhang from the Swedish Society of Medicine. H. Zhang was also supported by the Wenner-Gren Foundation.

Submitted: 1 July 2002

Revised: 19 August 2002

Accepted: 20 August 2002

## References

- Abbo, A., J. Qu, M.S. Cammarano, C. Dan, A. Fritsch, V. Baud, B. Belisle, and A. Minden. 1998. PAK4, a novel effector for Cdc42Hs, is implicated in the reorganization of the actin cytoskeleton and in the formation of filopodia. *EMBO J.* 17:6527–6540.
- Bagrodia, S., and R.A. Cerione. 1999. PAK to the future. *Trends Cell Biol.* 9:350–355.
- Bao, W., M. Thullberg, H. Zhang, A. Onischenko, and S. Strömlad. 2002. Cell attachment to the extracellular matrix induces proteasomal degradation of p21<sup>CIP1</sup> via Cdc42/Rac1 signaling. *Mol. Cell Biol.* 22:4587–4597.
- Bar-Sagi, D., and A. Hall. 2000. Ras and Rho GTPases: a family reunion. *Cell.* 103:227–238.
- Bodeau, A.L., A.L. Berrier, A.M. Mastrangelo, R. Martinez, and S.E. LaFlamme. 2001. A functional comparison of mutations in integrin  $\beta$  cytoplasmic domains: effects on the regulation of tyrosine phosphorylation, cell spreading, cell attachment, and  $\beta 1$  integrin conformation. *J. Cell Sci.* 114:2795–2807.
- Brooks, P.C., R.A. Clark, and D.A. Cheresh. 1994. Requirement of vascular integrin  $\alpha\beta 3$  for angiogenesis. *Science.* 264:569–571.
- Brooks, P.C., R.L. Klemke, S. Schon, J.M. Lewis, M.A. Schwartz, and D.A. Cheresh. 1997. Insulin-like growth factor receptor cooperates with integrin  $\alpha\beta 5$  to promote tumor cell dissemination in vivo. *J. Clin. Invest.* 99:1390–1398.
- Brown, M.C., K.A. West, and C.E. Turner. 2002. Paxillin-dependent paxillin kinase linker and p21-activated kinase localization to focal adhesions involves a multistep activation pathway. *Mol. Biol. Cell.* 13:1550–1565.
- Callow, M.G., F. Clairvoyant, S. Zhu, B. Schryver, D.B. Whyte, J.R. Bischoff, B. Jallal, and T. Smeal. 2002. Requirement for PAK4 in the anchorage-independent growth of human cancer cell lines. *J. Biol. Chem.* 277:550–558.
- Dan, C., A. Kelly, O. Bernard, and A. Minden. 2001a. Cytoskeletal changes regulated by the Pak4 serine/threonine kinase are mediated by lim kinase 1 and cofilin. *J. Biol. Chem.* 276:32115–32121.
- Dan, I., N.M. Watanabe, and A. Kusumi. 2001b. The Ste20 group kinases as regulators of MAP kinase cascades. *Trends Cell Biol.* 11:220–230.
- Daniels, R.H., P.S. Hall, and G.M. Bokoch. 1998. Membrane targeting of p21-activated kinase 1 (PAK1) induces neurite outgrowth from PC12 cells. *EMBO J.* 17:754–764.
- Dechert, M.A., J.M. Holder, and W.T. Gerthoffer. 2001. p21-activated kinase 1 participates in tracheal smooth muscle cell migration by signaling to p38 Mapk. *Am. J. Physiol. Cell Physiol.* 281:C123–C132.
- Edwards, D.C., L.C. Sanders, G.M. Bokoch, and G.N. Gill. 1999. Activation of LIM-kinase by Pak1 couples Rac/Cdc42 GTPase signaling to actin cytoskeletal dynamics. *Nat. Cell Biol.* 1:253–259.
- Eliceiri, B.P., X.S. Puente, J.D. Hood, D.G. Stupack, D.D. Schlaepfer, X.Z. Huang, D. Sheppard, and D.A. Cheresh. 2002. Src-mediated coupling of focal adhesion kinase to integrin  $\alpha\beta 5$  in vascular endothelial growth factor signaling. *J. Cell Biol.* 157:149–160.
- Faisst, A.M., and P. Gruss. 1998. Bodenin: a novel murine gene expressed in restricted areas of the brain. *Dev. Dyn.* 212:293–303.
- Felding-Habermann, B., and D.A. Cheresh. 1993. Vitronectin and its receptors. *Curr. Opin. Cell Biol.* 5:864–868.
- Friedlander, M., P.C. Brooks, R.W. Shaffer, C.M. Kincaid, J.A. Varner, and D.A. Cheresh. 1995. Definition of two angiogenic pathways by distinct  $\alpha$  v integrins. *Science.* 270:1500–1502.
- Giancotti, F.G., and E. Ruoslahti. 1999. Integrin signaling. *Science.* 285:1028–1032.
- Gnesutta, N., J. Qu, and A. Minden. 2001. The serine/threonine kinase PAK4 prevents caspase activation and protects cells from apoptosis. *J. Biol. Chem.* 276:14414–14419.
- Goeckeler, Z.M., R.A. Masaracchia, Q. Zeng, T.L. Chew, P. Gallagher, and R.B. Wysolmerski. 2000. Phosphorylation of myosin light chain kinase by p21-activated kinase PAK2. *J. Biol. Chem.* 275:18366–18374.
- Hughes, P.E., T.E. O'Toole, J. Ylanne, S.J. Shartil, and M.H. Ginsberg. 1995. The conserved membrane-proximal region of an integrin cytoplasmic domain specifies ligand binding affinity. *J. Biol. Chem.* 270:12411–12417.
- Hynes, R.O. 1992. Integrins: versatility, modulation, and signaling in cell adhesion. *Cell.* 69:11–25.
- Jones, J., F.M. Watt, and P.M. Speight. 1997. Changes in the expression of  $\alpha$  v integrins in oral squamous cell carcinomas. *J. Oral Pathol. Med.* 26:63–68.
- Kiosses, W.B., R.H. Daniels, C. Otey, G.M. Bokoch, and M.A. Schwartz. 1999. A role for p21-activated kinase in endothelial cell migration. *J. Cell Biol.* 147:831–844.
- Klemke, R.L., M. Yebra, E.M. Bayna, and D.A. Cheresh. 1994. Receptor tyrosine kinase signaling required for integrin  $\alpha\beta 5$ -directed cell motility but not adhesion on vitronectin. *J. Cell Biol.* 127:859–866.
- Lehmann, M., C. Rabenandrasana, R. Tamura, J.C. Lissitzky, V. Quaranta, J. Pichon, and J. Marvaldi. 1994. A monoclonal antibody inhibits adhesion to fibronectin and vitronectin of a colon carcinoma cell line and recognizes the integrins  $\alpha\beta 3$ ,  $\alpha\beta 5$ , and  $\alpha\beta 6$ . *Cancer Res.* 54:2102–2107.
- Lei, M., W. Lu, W. Meng, M.C. Parrini, M.J. Eck, B.J. Mayer, and S.C. Harrison. 2000. Structure of PAK1 in an autoinhibited conformation reveals a multistage activation switch. *Cell.* 102:387–397.
- Liliental, J., and D.D. Chang. 1998. Rack1, a receptor for activated protein kinase C, interacts with integrin  $\beta$  subunit. *J. Biol. Chem.* 273:2379–2383.
- Lim, L., E. Manser, T. Leung, and C. Hall. 1996. Regulation of phosphorylation pathways by p21 GTPases. The p21 Ras-related Rho subfamily and its role in phosphorylation signalling pathways. *Eur. J. Biochem.* 242:171–185.
- Lu, C., J. Takagi, and T.A. Springer. 2001. Association of the membrane proximal regions of the  $\alpha$  and  $\beta$  subunit cytoplasmic domains constrains an integrin in the inactive state. *J. Biol. Chem.* 276:14642–14648.
- Lu, W., S. Katz, R. Gupta, and B.J. Mayer. 1997. Activation of Pak by membrane localization mediated by an SH3 domain from the adaptor protein Nck. *Curr. Biol.* 7:85–94.
- Manser, E., H.Y. Huang, T.H. Loo, X.Q. Chen, J.M. Dong, T. Leung, and L. Lim. 1997. Expression of constitutively active  $\alpha$ -PAK reveals effects of the kinase on actin and focal complexes. *Mol. Cell Biol.* 17:1129–1143.
- Master, Z., N. Jones, J. Tran, J. Jones, R.S. Kerbel, and D.J. Dumont. 2001. Dok-R plays a pivotal role in angiopoietin-1-dependent cell migration through recruitment and activation of Pak. *EMBO J.* 20:5919–5928.
- Melzig, J., K.H. Rein, U. Schafer, H. Pfister, H. Jackle, M. Heisenberg, and T. Raabe. 1998. A protein related to p21-activated kinase (PAK) that is involved in neurogenesis in the *Drosophila* adult central nervous system. *Curr. Biol.* 8:1223–1226.
- Pardi, R., G. Bossi, L. Inverardi, E. Rovida, and J.R. Bender. 1995. Conserved regions in the cytoplasmic domains of the leukocyte integrin  $\alpha\beta 2$  are involved in endoplasmic reticulum retention, dimerization, and cytoskeletal association. *J. Immunol.* 155:1252–1263.
- del Pozo, M.A., L.S. Price, N.B. Alderson, X.D. Ren, and M.A. Schwartz. 2000. Adhesion to the extracellular matrix regulates the coupling of the small GTPase Rac to its effector PAK. *EMBO J.* 19:2008–2014.
- Price, L.S., J. Leng, M.A. Schwartz, and G.M. Bokoch. 1998. Activation of Rac and Cdc42 by integrins mediates cell spreading. *Mol. Biol. Cell.* 9:1863–1871.
- Qu, J., M.S. Cammarano, Q. Shi, K.C. Ha, P. de Lanerolle, and A. Minden. 2001. Activated PAK4 regulates cell adhesion and anchorage-independent growth. *Mol. Cell Biol.* 21:3523–3533.
- Ramaswamy, H., and M.E. Hemler. 1990. Cloning, primary structure and properties of a novel human integrin  $\beta$  subunit. *EMBO J.* 9:1561–1568.
- Sanders, L.C., F. Matsumura, G.M. Bokoch, and P. de Lanerolle. 1999. Inhibition of myosin light chain kinase by p21-activated kinase. *Science.* 283:2083–2085.
- Schurmann, A., A.F. Mooney, L.C. Sanders, M.A. Sells, H.G. Wang, J.C. Reed,

- and G.M. Bokoch. 2000. p21-activated kinase 1 phosphorylates the death agonist bad and protects cells from apoptosis. *Mol. Cell. Biol.* 20:453–461.
- Sells, M.A., U.G. Knaus, S. Bagrodia, D.M. Ambrose, G.M. Bokoch, and J. Chernoff. 1997. Human p21-activated kinase (Pak1) regulates actin organization in mammalian cells. *Curr. Biol.* 7:202–210.
- Sells, M.A., J.T. Boyd, and J. Chernoff. 1999. p21-activated kinase 1 (Pak1) regulates cell motility in mammalian fibroblasts. *J. Cell Biol.* 145:837–849.
- Seoane, J., C. Pouponnot, P. Staller, M. Schader, M. Eilers, and J. Massague. 2001. TGF $\beta$  influences Myc, Miz-1 and Smad to control the CDK inhibitor p15INK4b. *Nat. Cell Biol.* 3:400–408.
- Strömblad, S., J.C. Becker, M. Yebra, P.C. Brooks, and D.A. Cheresh. 1996. Suppression of p53 activity and p21WAF1/CIP1 expression by vascular cell integrin  $\alpha$ v $\beta$ 3 during angiogenesis. *J. Clin. Invest.* 98:426–433.
- Wayner, E.A., R.A. Orlando, and D.A. Cheresh. 1991. Integrins  $\alpha$ v $\beta$ 3 and  $\alpha$ v $\beta$ 5 contribute to cell attachment to vitronectin but differentially distribute on the cell surface. *J. Cell Biol.* 113:919–929.
- Wong, N.C., B.M. Mueller, C.F. Barbas, P. Ruminiski, V. Quaranta, E.C. Lin, and J.W. Smith. 1998. Alpha v integrins mediate adhesion and migration of breast carcinoma cell lines. *Clin. Exp. Metastasis.* 16:50–61.
- Yebra, M., G.C. Parry, S. Strömblad, N. Mackman, S. Rosenberg, B.M. Mueller, and D.A. Cheresh. 1996. Requirement of receptor-bound urokinase-type plasminogen activator for integrin  $\alpha$ v $\beta$ 5-directed cell migration. *J. Biol. Chem.* 271:29393–29399.
- Yonezawa, S., A. Kimura, S. Koshiba, S. Masaki, T. Ono, A. Hanai, S. Sonta, T. Kageyama, T. Takahashi, and A. Moriyama. 2000. Mouse myosin X: molecular architecture and tissue expression as revealed by Northern blot and in situ hybridization analyses. *Biochem. Biophys. Res. Commun.* 271:526–533.
- Zage, P.E., and E.E. Marcantonio. 1998. The membrane proximal region of the integrin  $\beta$  cytoplasmic domain can mediate oligomerization. *Cell Adhes. Commun.* 5:335–347.