

Drosophila *cb1* Is Essential for Control of Cell Death and Cell Differentiation during Eye Development

Yuan Wang¹, Christian Werz², Dongbin Xu¹, Zhihong Chen¹, Ying Li¹, Ernst Hafen², Andreas Bergmann^{1*}

1 Department of Biochemistry and Molecular Biology, The University of Texas, M.D. Anderson Cancer Center, Houston, Texas, United States of America, **2** Institute of Molecular Systems Biology, Eidgenössische Technische Hochschule Zürich, Zürich, Switzerland

Background. Activation of cell surface receptors transduces extracellular signals into cellular responses such as proliferation, differentiation and survival. However, as important as the activation of these receptors is their appropriate spatial and temporal down-regulation for normal development and tissue homeostasis. The Cbl family of E3-ubiquitin ligases plays a major role for the ligand-dependent inactivation of receptor tyrosine kinases (RTKs), most notably the Epidermal Growth Factor Receptor (EGFR) through ubiquitin-mediated endocytosis and lysosomal degradation. **Methodology/Principal Findings.** Here, we report the mutant phenotypes of *Drosophila* *cb1* (*D-cbl*) during eye development. *D-cbl* mutants display overgrowth, inhibition of apoptosis, differentiation defects and increased ommatidial spacing. Using genetic interaction and molecular markers, we show that most of these phenotypes are caused by increased activity of the *Drosophila* EGFR. Our genetic data also indicate a critical role of ubiquitination for *D-cbl* function, consistent with biochemical models. **Conclusions/Significance.** These data may provide a mechanistic model for the understanding of the oncogenic activity of mammalian *cb1* genes.

Citation: Wang Y, Werz C, Xu D, Chen Z, Li Y, et al (2008) *Drosophila* *cb1* Is Essential for Control of Cell Death and Cell Differentiation during Eye Development. PLoS ONE 3(1): e1447. doi:10.1371/journal.pone.0001447

INTRODUCTION

Normal cellular function and tissue homeostasis is dependent on the precise regulation of several signal transduction pathways that control cell proliferation, cell differentiation and cell survival. Each cell integrates an array of extracellular signals into appropriate cellular responses. Deregulation of these processes causes developmental abnormalities and human diseases including cancer. However, we still lack a clear understanding of how these processes are integrated in the context of a developing organism.

The development of the retina in the *Drosophila* compound eye has long been a model system to study how extra-cellular signaling generates precise cellular differentiation patterns (reviewed by reference [1]). The compound eye is composed of ~800 ommatidia, repetitive units each containing a precise number of different cell types. The adult fly eye develops from a monolayer epithelium—the eye imaginal disc. In early larval stages cells in the eye imaginal disc proliferate to provide the cellular mass for eye development. During mid-third instar larval stage, cellular differentiation starts at the posterior end of the eye imaginal disc, which coincides with formation of the morphogenetic furrow (MF) that sweeps across the disc from posterior to anterior [1,2]. As the MF progresses towards the anterior, cells located behind the MF start differentiating into distinct cell types in a strict sequence to form the ommatidium. Each ommatidium has eight photoreceptor neurons or “R” cells (R1–R8). R8 is the first R cell to be specified, and serves as the founder cell for recruitment of the other R cells in the order R2/R5→R3/R4→R1/R6→R7, followed by four non-neuronal cone cells during late third instar larval stage, and three classes of pigment cells during early pupal stages [3]. Finally, after specification of these cell types has been completed, all surplus undifferentiated cells are removed by apoptosis [3,4]. This occurs between 26–30 hours after puparium formation [5].

The specification of cell fate in the developing *Drosophila* retina is controlled by combinatorial signaling. Two receptor tyrosine kinases (RTKs), the epidermal growth factor receptor (EGFR) and Sevenless (Sev), contribute to retinal development [6,7]. Activation of EGFR by the secreted ligand Spitz (sSpi), a transforming growth factor (TGF- α) homologue, regulates the specification of all R cells

in the developing eye, except R8 [6,8,9]. Over-expression of sSpi causes an over-recruitment of all cell types, while expression of dominant negative EGFR (*EGFR^{DN}*), or shifting a temperature-sensitive EGFR allele to the non-permissive temperature leads to an impairment of differentiation [6,10,11]. Ommatidia mutant for *argos*, *gap1* and *sprouty*, three negative regulators of EGFR, contain extra R and cone cells surrounded by more secondary and tertiary pigment cells in the lattice [12–18]. In addition, EGFR signaling is utilized for cell survival during *Drosophila* eye development, due to its negative regulation of *hid*, a cell death-inducing gene [19–21]. In contrast to the EGFR which controls the development of all R cells in the ommatidium except R8, *sev* is required only for R7 differentiation [22].

As important as the activation of cell surface receptors is their inactivation for appropriate control of cell number and differentiation. The proto-oncogene Casitas B-lineage lymphoma (Cbl) was first identified as a retroviral transforming gene product that induces pre-B cell lymphomas and myeloid leukemia [23]. Cbl is involved in many signaling events through its function as a multi-domain adaptor protein and has been best characterized as a

.....
Academic Editor: Thomas Zwaka, Baylor College of Medicine, United States of America

Received November 15, 2007; **Accepted** December 14, 2007; **Published** January 16, 2008

Copyright: © 2008 Wang et al. This is an open-access article distributed under the terms of the Creative Commons Attribution License, which permits unrestricted use, distribution, and reproduction in any medium, provided the original author and source are credited.

Funding: Supported by National Institutes of Health (NIH) grant GM068016 to AB. Sequencing by the MD Anderson DNA Analysis Core Facility was supported by the NIH Cancer Center Support Grant CA16672. We gratefully acknowledge support by the Robert A. Welch Foundation (G-1496).

Competing Interests: The authors have declared that no competing interests exist.

* **To whom correspondence should be addressed.** E-mail: abergman@mdanderson.org

negative regulator of RTKs, mostly EGFR (reviewed by [24,25]). This concept grew out of genetic studies performed in *C.elegans* in which Sli-1, the Cbl ortholog, attenuates the activity of Let-23, the EGFR equivalent, in vulval development. [26]. Mammals contain three Cbl genes known as c-Cbl, Cbl-b and Cbl-3, which function as negative regulators of EGFR [25,27,28]. Knock-out mice of *c-cbl*, *cbl-b* and *cbl-3* have no obvious developmental phenotypes except in the immune system suggesting that they are functionally redundant [29–32]. *Drosophila* has only one *cbl* gene, referred to as *D-cbl* [33–35], eliminating the problem of redundancy, and the genetic characterization of *D-cbl* mutants may reveal more information about its oncogenic role. For example, an isoform of *D-cbl*, which mimicked the oncogenic viral *cbl* (*v-cbl*), demonstrated that *v-cbl* acts in a dominant negative manner [35]. Furthermore, consistent with studies in *C.elegans* and mammalian cell culture, *D-Cbl* has been shown to function as a negative regulator of EGFR

during dorsoventral patterning in oogenesis and guided migration of border cells [36,37]. A loss-of-function analysis of *D-cbl* for eye development in *Drosophila* has not been reported.

Mechanistically, Cbl binds tyrosine-phosphorylated EGFR through its tyrosine kinase binding (TKB) domain [38] (see also **Fig. 1K**). The E3 ligase activity of the RING domain of Cbl directs the mono-ubiquitination of activated EGFR at multiple sites, which promotes endocytosis and endosomal sorting for lysosomal degradation of the receptors [39–43]. *D-cbl* encodes two alternatively spliced isoforms, D-cblSHORT (D-cblS) and D-cblLONG (D-cblL), both of which contain the TBK and the RING E3 ubiquitin ligase domains, while D-CblL also has proline-rich (SH3 binding) and UBA domains similar to c-Cbl and Cbl-b [33–35] (see **Fig. 1K**).

Here, we present the characterization of the *D-cbl* mutant phenotype for eye development. *D-cbl* mutants display overgrowth

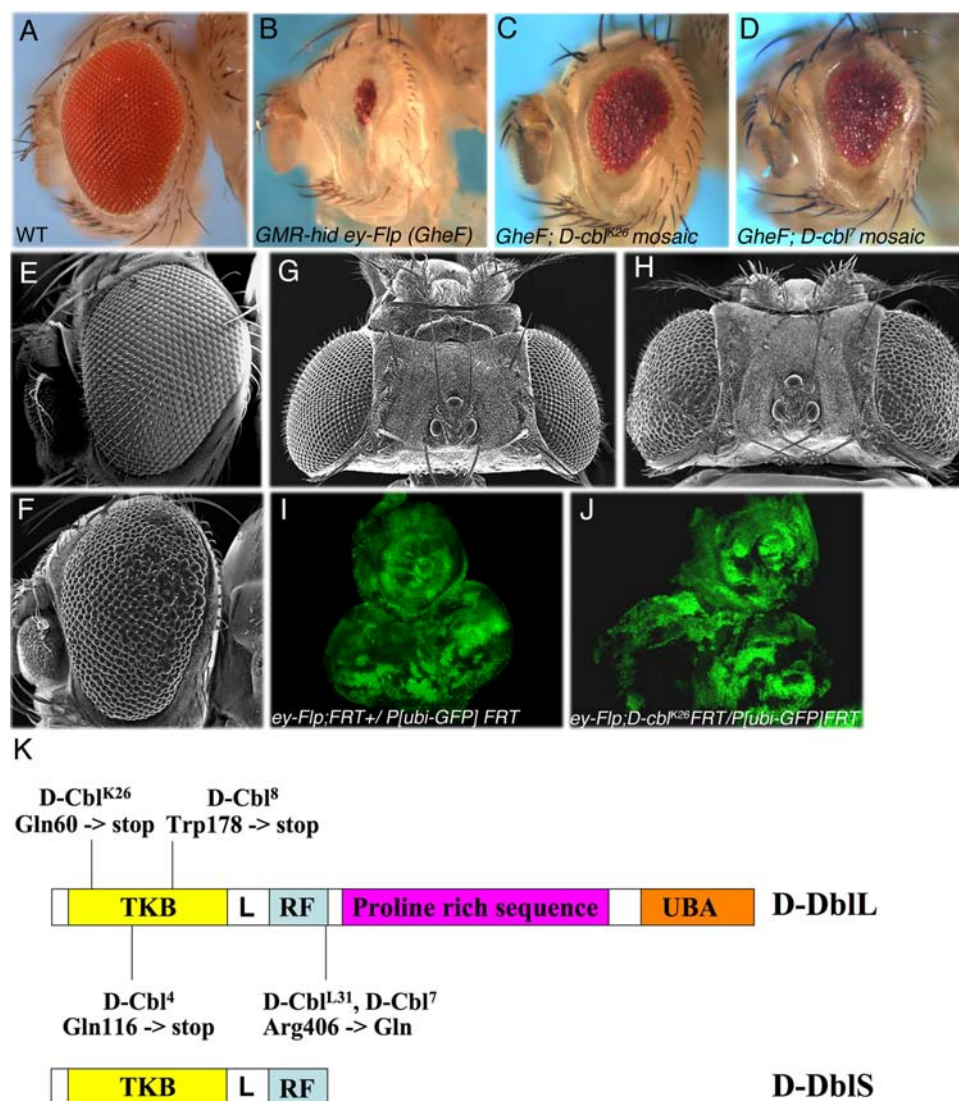


Figure 1. Identification and characterization of *D-cbl* mutants. (A) Wild-type (WT) fly showing normal eye phenotype. (B) *GMR-hid ey-FLP* (*GheF*) small eye phenotype. (C,D) *GheF;D-cbl^{K26}* and *GheF;D-cbl^l* mosaics significantly suppress the *GMR-hid* small eye phenotype. Genotype: *GheF; D-cbl^{K26} FRT80/P[w⁺] FRT80* (E,G) Scanning electron micrograph (SEM) of wild-type adult eye (E) and head (G). (F,H) *ey-FLP/Minute*-induced mosaics of *D-cbl^{K26}* display rough eyes (F) and enlarged heads (H). Genotype: *ey-FLP; D-cbl^{K26} FRT80/M(3);55 FRT80*. (I,J) Eye-antennal discs of 3rd instar larvae of *D-cbl^{K26}* mosaics (I) are larger compared to wild-type (J). Scale bar 20μm. (K) Domain structure of long (L) and short (S) isoforms of D-cbl. The relative locations of three non-sense mutations and two missense mutations in D-Cbl are indicated. *D-cbl^{l31}* and *D-cbl^{l7}* affect the same residue in the RING domain. TKB-Tyrosine Kinase binding domain; L-Linker; RF-RING finger; UBA-ubiquitin-associated domain. doi:10.1371/journal.pone.0001447.g001

and lack of developmental apoptosis. Mutant ommatidia contain increased numbers of photoreceptors (mostly R7), cone and pigment cells. Genetic interaction tests indicate that *D-cbl* regulates the EGFR pathway during eye development consistent with its proposed role as negative regulator of EGFR. Our genetic data indicate a critical role of ubiquitination for D-cbl function, in accord with biochemical models. In summary, these data provide a genetic model for the understanding of the oncogenic activity of mammalian *cbl* genes.

RESULTS

Isolation and characterization of *D-cbl* mutants

In a mutagenesis screen, we isolated five mutant *D-cbl* alleles as recessive suppressors of the small eye phenotype caused by expression of the pro-apoptotic gene *hid* under control of the eye-specific *GMR* enhancer (*GMR-hid*; **Fig. 1A–D**). For details about the *GMR-hid* suppressor screen see Material and Methods, and references [44–46]. Because D-Cbl is a known negative regulator of EGFR, and because increased EGFR activity inhibits the pro-apoptotic function of Hid [19–21], the isolation of *D-cbl* mutants as suppressors of *GMR-hid* can be explained by its effect on EGFR. However, what sparked our interest in characterizing *D-cbl* for eye development are the mutant phenotypes without *GMR-hid* expression. The eyes appear rough and bulgy with larger ommatidia (**Fig. 1E, F**), and *D-cbl* mutant heads are overgrown (**Fig. 1G, H**). The overgrowth phenotype is already visible in eye-antennal imaginal discs of 3rd instar larvae (**Fig. 1I, J**). Both, the strong rough eye and the overgrowth phenotype cannot be solely explained for by inhibition of apoptosis. Thus, we characterized the *D-cbl* mutant phenotype during eye development in more detail.

DNA sequencing revealed missense and non-sense mutations (**Fig. 1K**). *D-cbl*^{l7} and *D-cbl*^{l-31} affect the same residue, the highly conserved Arg406 residue in the RING domain. The remaining alleles, *D-cbl*^{k26}, *D-cbl*^{l4} and *D-cbl*^{l9} introduce premature STOP codons at positions 60, 116 and 178, respectively (**Fig. 1K**). *D-cbl*^{l4}

is identical to a previously isolated allele, *D-cbl*^{F165} [36]. At least *D-cbl*^{k26} can be considered a null allele of *D-cbl*. Interestingly, all isolated alleles affect both the large and the small isoform of *D-cbl*. We did not recover mutant alleles that affect only the large isoform. All experiments in this study were performed with at least two alleles, the null allele *D-cbl*^{k26} and the RING domain mutant *D-cbl*^{l7}, both of which show identical results.

D-Cbl regulates the EGFR pathway in the *Drosophila* eye

D-Cbl has previously been shown to be a negative regulator of EGFR signaling during dorsoventral patterning in oogenesis and border cell migration [36,37]. A similar loss-of-function analysis of D-cbl has not been done for eye development. We have performed several genetic interaction tests to determine whether D-Cbl controls EGFR signaling during eye development. First, heterozygosity of *D-cbl* considerably rescued the rough eye phenotype caused by over-expression of dominant negative *ras*^{N17} (**Fig. 2A, D**). Second, *D-cbl*^{k26} dominantly suppresses the eye phenotype caused by mis-expression of the active form of the repressor *yan* (*yan*^{act}) (**Fig. 2B, E**), a target gene negatively regulated by EGFR signaling [47,48]. Third, to more directly assess a role of *D-cbl* for the regulation of EGFR, we analyzed the effect of *D-cbl* mutants on the small eye phenotype caused by expression of a dominant negative allele of *EGFR*, *EGFR*^{DN} [6], under control of the eye-specific enhancer *GMR* (*GMR-EGFR*^{DN}) (**Fig. 2C**). *EGFR*^{DN} lacks the intracellular tyrosine kinase domain, but leaves the transmembrane and extracellular domains intact [6]. *EGFR*^{DN} is able to dimerize with endogenous EGFR, but trans-phosphorylation upon ligand binding does not take place and thus the dimer is unable to signal. However, the inhibition of endogenous EGFR by *EGFR*^{DN} is not complete as some R cells still survive and differentiate [6] (data not shown), which is not observed in strong *EGFR* mutant clones [49]. Thus, the small eye phenotype of *GMR-EGFR*^{DN} is caused by partial inhibition of endogenous EGFR. In *D-cbl*^{k26} mutant clones, the *GMR-EGFR*^{DN}

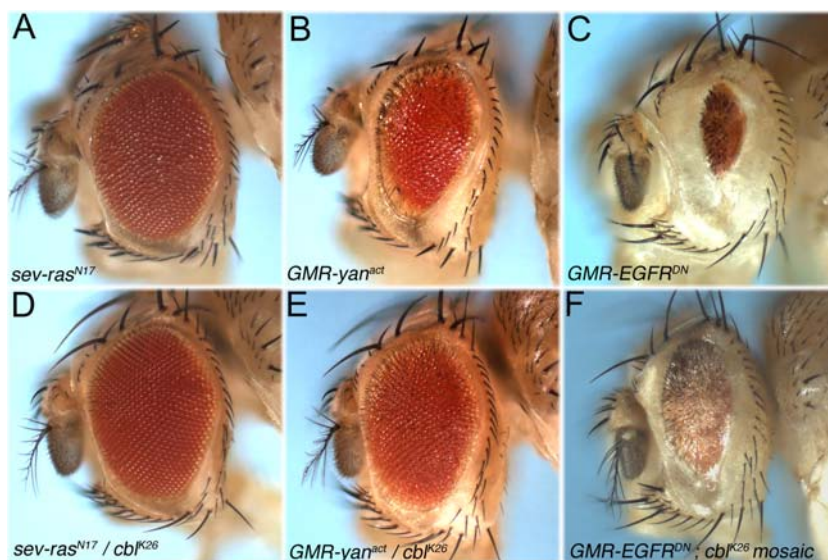


Figure 2. Genetic interaction between *D-cbl* and the EGFR pathway. (A,D) The rough eye caused by over-expression of dominant negative *ras*^{N17} under the *sevenless* promoter (*sev-ras*^{N17}) (A) is considerably suppressed when heterozygous for *D-cbl*^{k26} (D). Genotype in (D): *sev-ras*^{N17}; *D-cbl*^{k26}/+. (B,E) The small eye phenotype caused by *sevenless*-induced expression of activated *yan* (*sev-yan*^{act}) (B) is dominantly suppressed by heterozygosity for *D-cbl*^{k26} (E). Genotype in (E): *sev-yan*^{act}; *D-cbl*^{k26}/+. (C,F) Overexpression of *EGFR*^{DN} under the control of the *GMR* enhancer (*GMR-EGFR*^{DN}) causes a small eye (C). Genotype: *GMR-Gal4* UAS-*EGFR*^{DN}. *GMR-EGFR*^{DN} is recessively suppressed in *D-cbl*^{k26} mosaics (F). Genotype: *ey-Flp*; *GMR-Gal4* UAS-*EGFR*^{DN}; *D-cbl*^{k26} FRT80/P[ubi-GFP] FRT80. doi:10.1371/journal.pone.0001447.g002

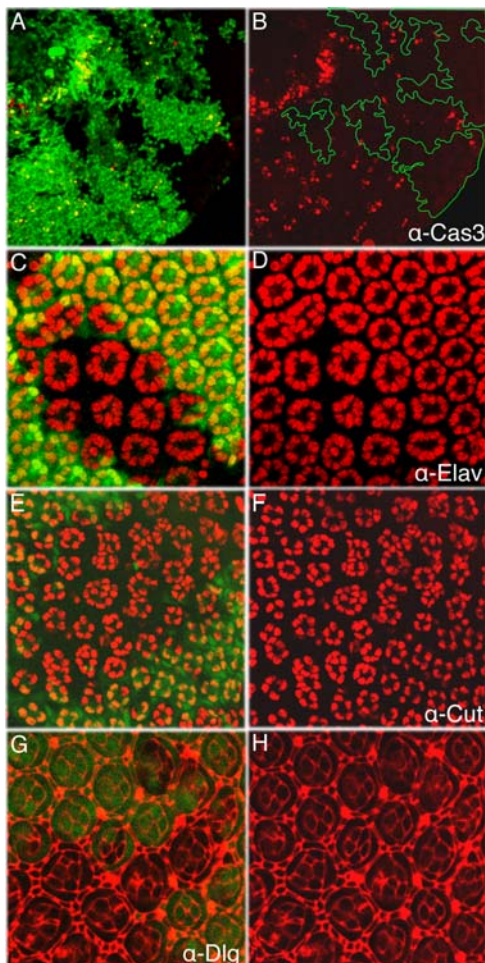


Figure 4. Over-recruitment of all cell types in *D-cbl* mutant ommatidia. Genotype in all panels: *ey-Flp; D-cbl^{K26} FRT80/P[ubi-GFP] FRT80*. (A,B) Cell death detected by cleaved (activated) caspase-3 (Cas3) staining is significantly reduced in *D-cbl^{K26}* mutant clones in 28 hours APF eye discs. Outlines of some clones are shown in (B). (C–F) Anti-Elav staining for photoreceptor cells (C,D) and anti-Cut staining for cone cells (E,F) in 42 hrs APF pupal discs. 11.45 R cells and up to eight cone cells are visible in *D-cbl^{K26}* ommatidia. (G–H) Anti-Dlg labeling of 42 hrs APF pupal discs visualizes the outline of cells and allows determining the number of pigment cells in *D-cbl^{K26}* mutant clones of pupal eye imaginal discs.
doi:10.1371/journal.pone.0001447.g004

[3]. Labeling of 42 hrs APF eye discs with Elav antibody, a R cell marker, revealed that each *D-cbl* mutant ommatidium contains on average 11.45 ± 1.03 ($n = 35$) R cells compared to eight in wild-type ommatidia (Fig. 4C, D). In addition, *D-cbl* mutant ommatidia contain up to eight cone cells compared to four in wild-type ommatidia (Fig. 4E, F) and about three primary pigment cells instead of two in wild-type (Fig. 4G, H). The total numbers of secondary and tertiary pigment cells has increased from nine in wild-type to an average of fourteen per *D-cbl* ommatidium (Fig. 4G, H). In summary, these data show that *D-cbl* mutants cause increased cellular survival and over-recruitment of all cell types disrupting the regular array of the ommatidia in the developing *Drosophila* eye.

D-cbl specifically affects R7 development

We determined whether the over-recruitment of R cells in *D-cbl* clones affects all photoreceptors randomly, or specific types of

photoreceptors. Labeling with antibodies directed against Rough (R2,5,3,4-specific) and Seven-up (Svp, R3,4,1,6-specific) did not reveal significant differences between *D-cbl* and wild-type tissue (Fig. 5A–D). However, labeling with an antibody against Prospero (Pros), a R7 marker, reveals 4.5 ± 0.53 ($n = 35$) cells per *D-cbl* mutant ommatidium whereas in wild-type only one cell is detected (Fig. 5E, F). To determine whether the additional Pros-positive cells have photoreceptor character, we performed Pros and Elav double labelings. In *D-cbl* mutant clones, all Pros-positive cells are Elav-positive, suggesting that most, if not all, additional photoreceptors in *D-cbl* ommatidia are R7 cells (Fig. 5G, H). Thus, among the R cells, *D-cbl* specifically affects the specification of R7. A similar and specific increase in the number of R7 cells has been observed in eye tissue mutant for other negative regulators of EGFR signaling including *argos*, *gap1*, and *sprouty* [12,16–18]. Thus, the over-recruitment phenotype in *D-cbl* mutants is typical for increased EGFR activity.

Loss of *D-cbl* can compensate for loss of *sevenless*

In addition to EGFR, Sevenless (Sev), a second RTK, is involved in eye development. *sev* is only required for R7 specification and consequently *sev* mutants do not contain R7 cells [22]. However, expression of dominant active *sev* constructs gives rise to the recruitment of multiple R7 cells [52], similar to the *D-cbl* phenotype. Thus, it is formally possible that *D-cbl* also regulates *Sev*.

We tested this possibility. If the additional R7 cells in *D-cbl* clones result from hyper-activity of *Sev*, then these cells should require *sev* for their specification. However, genetic removal of *sev* using the null allele *sev^{d2}* [53] has no effect on R7 specification in *D-cbl^{K26}* mosaic background (Fig. 6). The average number of total R cells in *sev^{d2}, D-cbl^{K26}* mutant ommatidia is 11.12 ± 0.74 ($n = 35$), containing more than four R7 cells per ommatidium (Fig. 6). The GFP-positive area is single mutant for *sev^{d2}* and hence does not form R7 (Fig. 6B, D). Thus, in *D-cbl^{K26}* mutants, the R7 cells can complete their differentiation program even in the absence of *Sev*, suggesting that the increase of EGFR signaling in *D-cbl^{K26}* can compensate for loss of *Sev*. A similar *sev*-independent mode of R7 specification has been observed for other negative regulators of the EGFR pathway such as *gap1* and *sprouty* [16–18].

DISCUSSION

The phenotypic characterization of *D-cbl* mutants for eye development in *Drosophila* allows making four important conclu-

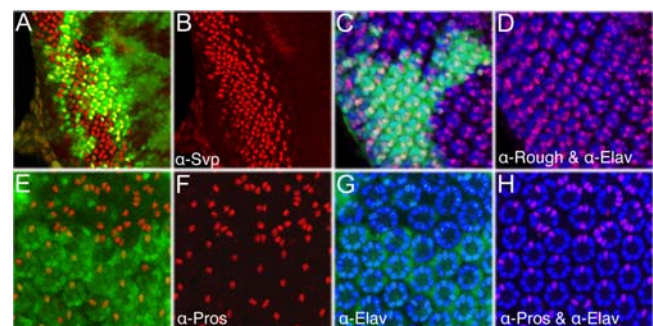


Figure 5. *D-cbl* affects R7 specification. Genotype in all panels: *ey-Flp; D-cbl^{K26} FRT80/P[ubi-GFP] FRT80*. (A,B) R3,4 and R1,6 are detected using anti-Svp antibody (red). (C,D) Expression of Rough (red) in R2,5,3,4 cells and Elav (blue) in all R cells. In *D-cbl^{K26}* clones, R1–R6 cells are normal in number. (E–H) Specific increase of R7 cells as indicated by double labeling with anti-Prospero (Pros) (red) and anti-Elav (blue) antibodies.
doi:10.1371/journal.pone.0001447.g005

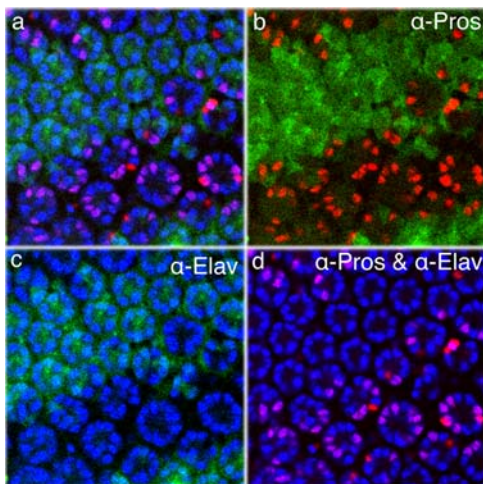


Figure 6. Loss of *D-cbl* compensates for loss of *sevenless*. The entire disc is mutant for *sev^{d2}*. Homozygous *D-cbl* clones are marked by the absence of GFP. Anti-Pros (red) labels R7 cells, and anti-Elav (blue) labels all R cells. The R7 cells are absent in *sev^{d2}* ommatidia, while 4.12 ± 0.74 ($n = 35$) R7 cells are present in *sev^{d2}; D-cbl^{K26}* double mutant ommatidia. Genotype: *sev^{d2}/Y; ey-FLP/+; FRT80 D-cbl^{K26}/FRT80 P[ubi-GFP]*. doi:10.1371/journal.pone.0001447.g006

sions: First, *D-cbl* plays an important role for the negative regulation of EGFR activity. Second, loss of *D-cbl* causes severe mis-specification and over-recruitment defects. Third, loss of *D-cbl* blocks developmental apoptosis. Fourth, loss of *D-cbl* causes tissue overgrowth at the organismal level, providing a model to study the oncogenic activity of mammalian *cbl* genes.

D-Cbl negatively regulates EGFR

D-cbl mutant ommatidia contain increased numbers of R7, cone and pigment cells. Similar phenotypes have been observed in mutants of other negative regulators of the EGFR pathway such as *gap1*, *argos* and *sprouty* [12,16–18]. We also confirmed a regulatory role of *D-cbl* for EGFR activity in genetic interaction studies (Fig. 2). Furthermore, using the molecular markers p-Tyr, dpERK and Yan as readouts for EGFR activity we showed that *D-cbl* clones contain increased RTK and MAPK activity. Likewise, overexpression of *D-cbl* blocks p-Tyr and dpERK labeling. Thus, the *D-cbl* mutant phenotypes in the eye are consistent with increased EGFR activity and suggest that D-Cbl negatively regulates EGFR, in accord with previous reports [34,36,37].

In contrast to *argos*, *gap1* and *sprouty*, *D-cbl* does not appear to regulate all RTKs. For example, *D-cbl* does not influence Torso [36], a RTK involved in specification of the termini in the *Drosophila* embryo [54]. Here, we have demonstrated that *D-cbl* does not control the Sev RTK. This difference likely reflects the direct mode of EGFR regulation by *D-cbl*, while *argos*, *gap1* and *sprouty* act downstream in the Ras/MAPK pathway which is shared by all RTKs. Biochemical data has demonstrated that mammalian Cbl proteins directly bind to tyrosine-phosphorylated EGFR and ubiquitylates it for endocytosis and lysosomal degradation [38–43]. Although we have not verified a similar biochemical mechanism for the interaction between *Drosophila* EGFR and D-Cbl, it is likely that the mechanism is similar. This notion is supported by the isolation of two *D-cbl* alleles affecting the RING domain (Fig. 1K). The RING domain contains an E3 ubiquitin ligase activity which targets the EGFR for ubiquitylation [39]. The mutant phenotype of *D-cbl^l* affecting the RING domain is indistinguishable from the null allele *D-cbl^{K26}* (data not shown),

further supporting an essential role of ubiquitylation for *D-cbl* function.

It is unclear why only the number of R7 cells is affected whereas the remaining R cells are normal in number although R1–R6 also require the EGFR for specification. However, it suggests that the sequence of events during R cell specification is normal in *D-cbl* clones. The fact that *D-cbl* clones contain up to four additional R7 cells is likely due to the fact that R7 and the four cone cells are developmentally equivalent. These five cells express *sev* and all have the capacity to become R7 if Sev or downstream components are activated [52]. Thus, the additional R7 cells in *D-cbl* clones likely represent transformed cone cells.

However, this transformation does not mean that the cone cells are lost in *D-cbl* clones. In contrast, we even observe an over-recruitment of cone cells. Interestingly, the cone cell over-recruitment in *D-cbl* mutants does not occur during pupal stages as suggested for *gap1* [16]. It occurs at the correct developmental time in late third instar eye development (data not shown). Thus, the over-recruitment of several different cell types in *D-cbl* clones follows the same rules of reiterative use of the EGFR as compared to wild-type.

EGFR-independent phenotypes of *D-cbl*

Despite the fact that the *D-cbl* mutant phenotypes are similar to the ones described for *argos*, *gap1* and *sprouty*, we noticed at least two phenotypes which appear to be specific for *D-cbl*. First, *D-cbl* mutant heads and imaginal discs are overgrown (Fig. 1). Second, the spacing between the ommatidial clusters is increased (see examples in Fig. 4D, 4F, and 6D). Similar phenotypes have not been observed for *gap1*, *argos* and *sprouty* [12–18] (data not shown). It is unclear how these phenotypes are caused, but they may be independent of EGFR. Further studies are needed to clarify these observations.

Implications for mammalian Cbl and oncogenesis

This work may also have some important implications for our understanding of the oncogenic nature of mammalian *cbl* [55]. Increased proliferation and reduced apoptosis are hallmarks of cancer [56]. *v-cbl* is a retroviral transforming oncogene causing pre-B lymphoma and myeloid leukemia [23]. *v-cbl* contains only the TKB domain [24] and behaves genetically as a dominant negative mutant [35]. Furthermore, inappropriate activation of mammalian EGFR can lead to various forms of human cancers [57–60]. Thus, genetic studies in model organisms may contribute to our understanding of oncogenic processes in mammals.

MATERIALS AND METHODS

Identification of *D-cbl* mutant alleles

Eye-specific expression of *hid* under *GMR* enhancer control (*GMR-hid*) results in an eye ablation phenotype (Fig. 1B). Using the *GMR-hid ey-FLP (GheF)* method [44], we conducted an EMS-mutagenesis screen for chromosome arm 3L to identify recessive suppressors of the *GMR-hid* eye ablation phenotype. This method induces homozygous mutant clones in the eye by *ey-FLP/FRT*-mediated mitotic recombination in otherwise heterozygous background [61]. For *GheF* screening, *ey-FLP; FRT80* males were incubated with 25 mM EMS in 5% sucrose solution for 24 hours. After recovery for 3 hours, they were mated to *GheF; FRT80 P[w⁺]* females and incubated at 25°C. 45,000 F1 progeny were screened for suppression of the *GMR-hid* small eye phenotype. In the screen for 3L, 4 *dronc* [44] and 5 *D-cbl* alleles (this study) were recovered.

Drosophila genetics

Fly crosses were conducted using standard procedures at 25°C. Pupal developmental ages are expressed as hours after puparium formation (APF) with white pre-pupae defined as 0 hour APF. The following stocks were used: *D-cbl^{k26}* and *D-cbl^l* (this study), *GMR-hid¹⁰* [62], *ey-Flp*; *P[ubi-GFP] FRT80B* (provided by Georg Halder), *UASp-P35* [63], *UAS-EGFR^{DN}* [6], *sev-ras^{N17}* [64], *sev-yan^{act}* [47], *sev^{d2}* [53]. To generate *D-cbl* mutant clones, *D-cbl^{k26} FRT80B* and *D-cbl^l FRT80B* flies were crossed to *ey-Flp*; *P[ubi-GFP] FRT80B*. Clones are marked by loss of GFP. *GMR-EGFR^{DN}* is *GMR-Gal4 UAS-EGFR^{DN}*.

Immunohistochemistry

Eye imaginal discs from the indicated larval or pupal stages were dissected and immunohistochemical labeling was performed as described [65]. The following antibodies were used: rat anti-Elav (1:60) and rabbit anti-phosphotyrosine antibody (1:500, both provided by G. Halder); anti-Svp (1:100, provided by R. Schulz); anti-Rough (1:50, provided by K. Choi); Rabbit anti-cleaved Caspase-3 (1:200; Cell Signaling Technology); dp-ERK (1:2,000;

Sigma); anti-Pros (1:50), mouse anti-Dlg (1:50) anti-Yan (1:40), anti-Cut (1:100) (all DSHB). Fluorescently-conjugated secondary antibodies are from Jackson ImmunoResearch and were used at dilutions of 1:400. Images were captured using a Olympus Optical FV500 confocal microscope.

ACKNOWLEDGMENTS

We would like to thank H. Bellen, K. Choi, G. Halder, L.-M. Pai, R. Schulz, T. Schüpbach, the Bloomington Stock Center and the Developmental Studies Hybridoma Bank for fly stocks and reagents; H. Robertson for advice and sharing unpublished information; G. Halder and members of the Bergmann lab for discussions.

Author Contributions

Conceived and designed the experiments: AB YW. Performed the experiments: YW. Analyzed the data: AB YW. Wrote the paper: AB YW. Other: Isolated D-cbl mutants: DX YL. Designed the experiments in Figure 1E–F: EH. Provided technical assistance: ZC. Performed the experiments in Figure 1E–F: CW.

REFERENCES

- Voas MG, Rebay I (2004) Signal integration during development: insights from the *Drosophila* eye. *Dev Dyn* 229: 162–175.
- Ready DF, Hanson TE, Benzer S (1976) Development of the *Drosophila* retina, a neurocrystalline lattice. *Dev Biol* 53: 217–240.
- Cagan RL, Ready DF (1989) The emergence of order in the *Drosophila* pupal retina. *Dev Biol* 136: 346–362.
- Lebovitz RM, Ready DF (1986) Ommatidial development in *Drosophila* eye disc fragments. *Dev Biol* 117: 663–671.
- Cordero J, Jassim O, Bao S, Cagan R (2004) A role for wingless in an early pupal cell death event that contributes to patterning the *Drosophila* eye. *Mech Dev* 121: 1523–1530.
- Freeman M (1996) Reiterative use of the EGF receptor triggers differentiation of all cell types in the *Drosophila* eye. *Cell* 87: 651–660.
- Hafen E, Basler K, Edstroem JE, Rubin GM (1987) Sevenless, a cell-specific homeotic gene of *Drosophila*, encodes a putative transmembrane receptor with a tyrosine kinase domain. *Science* 236: 55–63.
- Freeman M (1994) The spitz gene is required for photoreceptor determination in the *Drosophila* eye where it interacts with the EGF receptor. *Mech Dev* 48: 25–33.
- Tio M, Moses K (1997) The *Drosophila* TGF alpha homolog Spitz acts in photoreceptor recruitment in the developing retina. *Development* 124: 343–351.
- Kumar JP, Tio M, Hsiung F, Akopyan S, Gabay L, et al. (1998) Dissecting the roles of the *Drosophila* EGF receptor in eye development and MAP kinase activation. *Development* 125: 3875–3885.
- Lesokhin AM, Yu SY, Katz J, Baker NE (1999) Several levels of EGF receptor signaling during photoreceptor specification in wild-type, *Ellipse*, and null mutant *Drosophila*. *Dev Biol* 205: 129–144.
- Freeman M, Klambt C, Goodman CS, Rubin GM (1992) The *argos* gene encodes a diffusible factor that regulates cell fate decisions in the *Drosophila* eye. *Cell* 69: 963–975.
- Okano H, Hayashi S, Tanimura T, Sawamoto K, Yoshikawa S, et al. (1992) Regulation of *Drosophila* neural development by a putative secreted protein. *Differentiation* 52: 1–11.
- Kretzschmar D, Brunner A, Wiersdorff V, Pflugfelder GO, Heisenberg M, et al. (1992) Giant lens, a gene involved in cell determination and axon guidance in the visual system of *Drosophila melanogaster*. *Embo J* 11: 2531–2539.
- Schweitzer R, Howes R, Smith R, Shilo BZ, Freeman M (1995) Inhibition of *Drosophila* EGF receptor activation by the secreted protein *Argos*. *Nature* 376: 699–702.
- Gaul U, Mardon G, Rubin GM (1992) A putative Ras GTPase activating protein acts as a negative regulator of signaling by the Sevenless receptor tyrosine kinase. *Cell* 68: 1007–1019.
- Kramer S, Okabe M, Hacohen N, Krasnow MA, Hiromi Y (1999) Sprouty: a common antagonist of FGF and EGF signaling pathways in *Drosophila*. *Development* 126: 2515–2525.
- Casci T, Vinos J, Freeman M (1999) Sprouty, an intracellular inhibitor of Ras signaling. *Cell* 96: 655–665.
- Bergmann A, Agapite J, McCall K, Steller H (1998) The *Drosophila* gene *hid* is a direct molecular target of Ras-dependent survival signaling. *Cell* 95: 331–341.
- Kurada P, White K (1998) Ras promotes cell survival in *Drosophila* by downregulating *hid* expression. *Cell* 95: 319–329.
- Yu SY, Yoo SJ, Yang L, Zapata C, Srinivasan A, et al. (2002) A pathway of signals regulating effector and initiator caspases in the developing *Drosophila* eye. *Development* 129: 3269–3278.
- Rubin GM (1991) Signal transduction and the fate of the R7 photoreceptor in *Drosophila*. *Trends Genet* 7: 372–377.
- Langdon WY, Hartley JW, Klinken SP, Ruscetti SK, Morse HC 3rd (1989) *v-cbl*, an oncogene from a dual-recombinant murine retrovirus that induces early B-lineage lymphomas. *Proc Natl Acad Sci U S A* 86: 1168–1172.
- Schmidt MH, Dikic I (2005) The Cbl interactome and its functions. *Nat Rev Mol Cell Biol* 6: 907–919.
- Thien CB, Langdon WY (2005) Negative regulation of PTK signalling by Cbl proteins. *Growth Factors* 23: 161–167.
- Yoon CH, Lee J, Jongeward GD, Sternberg PW (1995) Similarity of *sli-1*, a regulator of vulval development in *C. elegans*, to the mammalian proto-oncogene *c-cbl*. *Science* 269: 1102–1105.
- Thien CB, Langdon WY (2001) Cbl: many adaptations to regulate protein tyrosine kinases. *Nat Rev Mol Cell Biol* 2: 294–307.
- Tsygankov AY, Teckchandani AM, Feshchenko EA, Swaminathan G (2001) Beyond the RING: CBL proteins as multivalent adaptors. *Oncogene* 20: 6382–6402.
- Murphy MA, Schnall RG, Venter DJ, Barnett L, Bertoncello I, et al. (1998) Tissue hyperplasia and enhanced T-cell signalling via ZAP-70 in *c-Cbl*-deficient mice. *Mol Cell Biol* 18: 4872–4882.
- Chiang YJ, Kole HK, Brown K, Naramura M, Fukuhara S, et al. (2000) Cbl-b regulates the CD28 dependence of T-cell activation. *Nature* 403: 216–220.
- Bachmaier K, Krawczyk C, Koziarzki I, Kong YY, Sasaki T, et al. (2000) Negative regulation of lymphocyte activation and autoimmunity by the molecular adaptor Cbl-b. *Nature* 403: 211–216.
- Griffiths EK, Sanchez O, Mill P, Krawczyk C, Hojilla CV, et al. (2003) Cbl-3-deficient mice exhibit normal epithelial development. *Mol Cell Biol* 23: 7708–7718.
- Hime GR, Dhungat MP, Ng A, Bowtell DD (1997) D-Cbl, the *Drosophila* homologue of the *c-Cbl* proto-oncogene, interacts with the *Drosophila* EGF receptor *in vivo*, despite lacking C-terminal adaptor binding sites. *Oncogene* 14: 2709–2719.
- Meisner H, Daga A, Buxton J, Fernandez B, Chawla A, et al. (1997) Interactions of *Drosophila* Cbl with epidermal growth factor receptors and role of Cbl in R7 photoreceptor cell development. *Mol Cell Biol* 17: 2217–2225.
- Robertson H, Hime GR, Lada H, Bowtell DD (2000) A *Drosophila* analogue of *v-Cbl* is a dominant-negative oncoprotein *in vivo*. *Oncogene* 19: 3299–3308.
- Pai LM, Barcelo G, Schupbach T (2000) D-cbl, a negative regulator of the Egr pathway, is required for dorsoventral patterning in *Drosophila* oogenesis. *Cell* 103: 51–61.
- Jekely G, Sung HH, Luque CM, Rorth P (2005) Regulators of endocytosis maintain localized receptor tyrosine kinase signaling in guided migration. *Dev Cell* 9: 197–207.
- Galisteo ML, Dikic I, Batzer AG, Langdon WY, Schlessinger J (1995) Tyrosine phosphorylation of the *c-cbl* proto-oncogene protein product and association with epidermal growth factor (EGF) receptor upon EGF stimulation. *J Biol Chem* 270: 20242–20245.
- Joazeiro CA, Wing SS, Huang H, Levenson JD, Hunter T, et al. (1999) The tyrosine kinase negative regulator *c-Cbl* as a RING-type, E2-dependent ubiquitin-protein ligase. *Science* 286: 309–312.
- Levkowitz G, Waterman H, Ettenberg SA, Katz M, Tsygankov AY, et al. (1999) Ubiquitin ligase activity and tyrosine phosphorylation underlie suppression of growth factor signaling by *c-Cbl/Sli-1*. *Mol Cell* 4: 1029–1040.

41. Waterman H, Levkowitz G, Alroy I, Yarden Y (1999) The RING finger of c-Cbl mediates desensitization of the epidermal growth factor receptor. *J Biol Chem* 274: 22151–22154.
42. Yokouchi M, Kondo T, Houghton A, Bartkiewicz M, Horne WC, et al. (1999) Ligand-induced ubiquitination of the epidermal growth factor receptor involves the interaction of the c-Cbl RING finger and Ubch7. *J Biol Chem* 274: 31707–31712.
43. Haglund K, Sigismund S, Polo S, Szymkiewicz I, Di Fiore PP, et al. (2003) Multiple monoubiquitination of RTKs is sufficient for their endocytosis and degradation. *Nat Cell Biol* 5: 461–466.
44. Xu D, Li Y, Arcaro M, Lackey M, Bergmann A (2005) The CARD-carrying caspase Dronc is essential for most, but not all, developmental cell death in *Drosophila*. *Development* 132: 2125–2134.
45. Xu D, Wang Y, Willecke R, Chen Z, Ding T, et al. (2006) The effector caspases drICE and dcp-1 have partially overlapping functions in the apoptotic pathway in *Drosophila*. *Cell Death Differ* 13: 1697–1706.
46. Srivastava M, Scherr H, Lackey M, Xu D, Chen Z, et al. (2007) ARK, the Apaf-1 related killer in *Drosophila*, requires diverse domains for its apoptotic activity. *Cell Death Differ* 14: 92–102.
47. Rebay I, Rubin GM (1995) Yan functions as a general inhibitor of differentiation and is negatively regulated by activation of the Ras1/MAPK pathway. *Cell* 81: 857–866.
48. Rohrbaugh M, Ramos E, Nguyen D, Price M, Wen Y, et al. (2002) Notch activation of yan expression is antagonized by RTK/pointed signaling in the *Drosophila* eye. *Curr Biol* 12: 576–581.
49. Xu T, Rubin GM (1993) Analysis of genetic mosaics in developing and adult *Drosophila* tissues. *Development* 117: 1223–1237.
50. Gabay L, Seger R, Shilo BZ (1997) In situ activation pattern of *Drosophila* EGF receptor pathway during development. *Science* 277: 1103–1106.
51. Krieser RJ, Moore FE, Dresnek D, Pellock BJ, Patel R, et al. (2007) The *Drosophila* homolog of the putative phosphatidyserine receptor functions to inhibit apoptosis. *Development* 134: 2407–2414.
52. Basler K, Christen B, Hafen E (1991) Ligand-independent activation of the sevenless receptor tyrosine kinase changes the fate of cells in the developing *Drosophila* eye. *Cell* 64: 1069–1081.
53. Basler K, Hafen E (1989) Ubiquitous expression of sevenless: position-dependent specification of cell fate. *Science* 243: 931–934.
54. Sprenger F, Stevens LM, Nusslein-Volhard C (1989) The *Drosophila* gene torso encodes a putative receptor tyrosine kinase. *Nature* 338: 478–483.
55. Peschard P, Park M (2003) Escape from Cbl-mediated downregulation: a recurrent theme for oncogenic deregulation of receptor tyrosine kinases. *Cancer Cell* 3: 519–523.
56. Hanahan D, Weinberg RA (2000) The hallmarks of cancer. *Cell* 100: 57–70.
57. Pacz JG, Janne PA, Lee JC, Tracy S, Greulich H, et al. (2004) EGFR mutations in lung cancer: correlation with clinical response to gefitinib therapy. *Science* 304: 1497–1500.
58. Sharma SV, Bell DW, Settleman J, Haber DA (2007) Epidermal growth factor receptor mutations in lung cancer. *Nat Rev Cancer* 7: 169–181.
59. Kwak EL, Jankowski J, Thayer SP, Lauwers GY, Brannigan BW, et al. (2006) Epidermal growth factor receptor kinase domain mutations in esophageal and pancreatic adenocarcinomas. *Clin Cancer Res* 12: 4283–4287.
60. Sordella R, Bell DW, Haber DA, Settleman J (2004) Gefitinib-sensitizing EGFR mutations in lung cancer activate anti-apoptotic pathways. *Science* 305: 1163–1167.
61. Newsome TP, Asling B, Dickson BJ (2000) Analysis of *Drosophila* photoreceptor axon guidance in eye-specific mosaics. *Development* 127: 851–860.
62. Grether ME, Abrams JM, Agapite J, White K, Steller H (1995) The head involution defective gene of *Drosophila melanogaster* functions in programmed cell death. *Genes Dev* 9: 1694–1708.
63. Werz C, Lee TV, Lee PL, Lackey M, Bolduc C, et al. (2005) Mis-specified cells die by an active gene-directed process, and inhibition of this death results in cell fate transformation in *Drosophila*. *Development* 132: 5343–5352.
64. Karim FD, Chang HC, Therrien M, Wassarman DA, Lavery T, et al. (1996) A screen for genes that function downstream of Ras1 during *Drosophila* eye development. *Genetics* 143: 315–329.
65. Herz HM, Chen Z, Scherr H, Lackey M, Bolduc C, et al. (2006) vps25 mosaics display non-autonomous cell survival and overgrowth, and autonomous apoptosis. *Development* 133: 1871–1880.