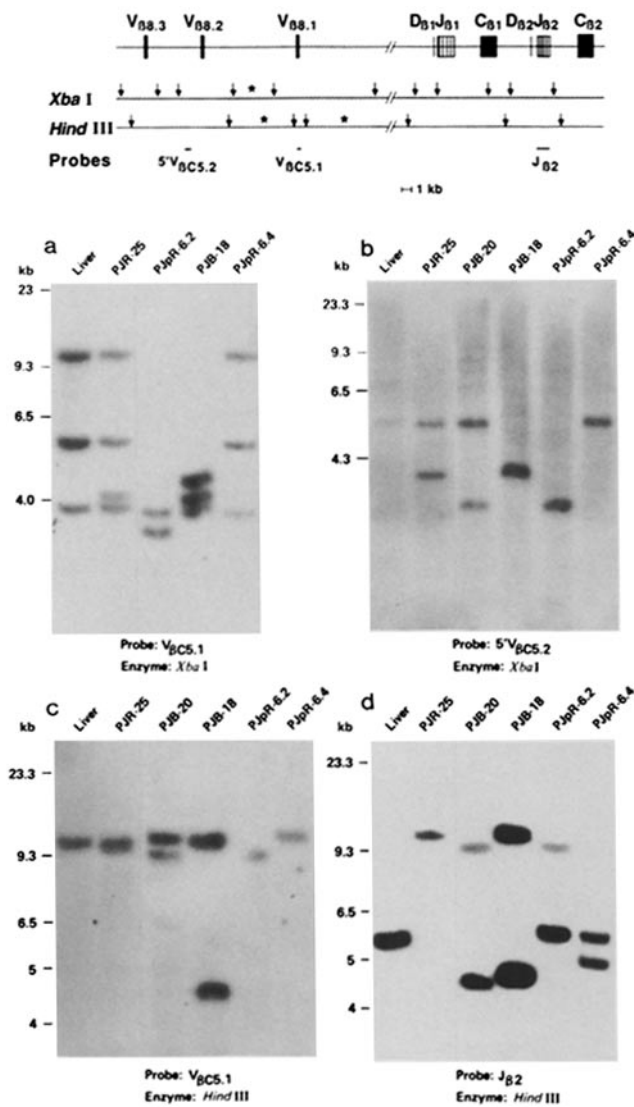


In the article "Predominant expression of a T cell receptor V $\beta$  gene subfamily in autoimmune encephalomyelitis" by Scott S. Zamvil, Dennis J. Mitchell, Nadine E. Lee, Anne C. Moore, Matthew K. Waldor, Koichiro Sakai, Jonathan B. Rothbard, Hugh O. McDevitt, Lawrence Steinman, and Hans Acha-Orbea (May 1988, 167:1586), part of Fig. 3 was missing due to a printer's error. The complete figure and legend are printed below.



**FIGURE 3.** Examination of TCR  $\beta$  chains by Southern analysis. Above is a genomic restriction enzyme diagram for the region encoding the TCR V $\beta$ 8 (11a, 27) genes and the region encoding TCR D $\beta$ , J $\beta$ , and C $\beta$  genes (28). Individual DNA probes used are indicated below. All clones are KJ16<sup>+</sup> except Pjpr-6.4. (a) DNA was digested with restriction enzyme Xba I and hybridized with probe V $\beta$ C5.1, a 280-bp Pst-Pvu II subclone of V $\beta$ 8.1 (V $\beta$ C5.1 [reference 11]). (b) Each DNA sample was digested with Xba I and hybridized with DNA probe 5'V $\beta$ C5.2, a 0.5-kb Pvu II fragment, located 2 kb 5' of V $\beta$ 8.2 (see restriction map). (c) DNA was digested with Hind III and hybridized with V $\beta$ C5.1. (d) DNA samples were digested with Hind III and hybridized with a 1.2-kb J $\beta$ 2 genomic probe (12) encompassing J $\beta$ 2.1-2.7. V $\beta$ 5.1, which is not shown, is located between V $\beta$ 8.3 and V $\beta$ 8.2 (27).